

AGENDA
PEDESTRIAN, BICYCLE, AND TRAFFIC SAFETY ADVISORY COMMITTEE
May 24, 2018 – 7:00 to 9:30 p.m.
EOB 9th Floor Conference Room, Rockville

- | | |
|--|--|
| 1) Welcome and Introductions | Kristy Daphnis (10 mins) |
| 2) WABA Update <ul style="list-style-type: none">● Advocacy Efforts● Bike to Work Day | Robert Gardner (20 mins) |
| 3) Veirs Mill Corridor Master Plan | David Anspacher (20 mins) |
| 4) Vision Zero Plan – Progress Update | Wade Holland (10 mins) |
| 5) MD State Highway Administration Updates | Derek Gunn and Peter Sotherland (20 min.) |
| 6) MCDOT Updates | Khursheed Bilgrami (20 mins) |
| 7) County Council Budget Update | Aaron Kraut (10 mins) |
| 8) General Business (40 min) <ul style="list-style-type: none">1) Summary of March Meeting – Changes/Approval (5min)2) Update of Pedestrian and Bicycle Crashes – (Jeremy Smalley, MCPD) (10 min)3) Annual Report Update (Angela Ashe) (5 min)4) PBTSAC Vacancies (5 min)5) PBTSAC Subcommittee Structure Discussion/Assignments (Kristy Daphnis) (10 mins)6) Other items (5 mins) | |
| 9) Adjourn | |

2018 Upcoming Meeting Dates: July 26, September 27, and November 29



Enforcement - Pedestrian Crash Data

Pedestrian Safety Program

Source: Montgomery County Police Department

* All numbers reflect MCPD's number count of recorded pedestrian related vehicle accident reports provide should be considered preliminary.

	Pre-Pedestrian Safety Program			Post-Pedestrian Safety Program										2010 thru 2017 (Average)	2010 thru 2016 (Running Months Accumulative Average Total)
	2007 thru 2009 (Average)	2007	2008	2009	2010	2011	2012	2013	2014	2015	2016	2017	2018		
January	37.67	32	47	34	34	28	39	51	41	44	50	52	33	42.38	42
February	33.67	34	30	37	39	27	36	37	23	42	48	43	35	36.88	79
March	34.67	34	38	32	33	38	29	36	29	31	34	43	28	34.13	113
April	32.00	34	34	28	33	36	28	43	22	27	30	39	25	32.25	146
May	41.33	32	47	45	33	28	36	40	35	33	28	42	12	34.38	180
June	31.67	30	24	41	33	17	35	33	31	32	35	41		32.13	212
July	30.33	18	37	36	33	24	23	29	31	38	24	16		27.25	239
August	30.67	24	37	31	26	33	31	36	27	36	32	39		32.50	272
September	34.00	37	35	30	40	32	35	41	42	35	41	35		37.63	310
October	35.00	36	31	38	44	43	44	55	54	49	54	55		49.75	359
November	47.67	60	38	45	43	42	48	40	42	57	40	43		44.38	404
December	44.33	33	49	51	44	51	41	37	43	57	51	46		46.25	450
Total Collisions	433	404	447	448	434	399	425	478	420	481	467	494	133	450	
Per 100,000 (incl. Takoma Park)		42.9	46.9	46.1	44.5	40.2	42.2	47.0	40.9	46.4	44.7				
Serious Pedestrian Collisions Totals (Level 4 & 5)	123	122	116	132	119	103	83	86	76	75	52	72	18	83	
Serious Pedestrian Collisions as a % of All Pedestrian Collisions (Level 4 & 5)		30%	26%	29%	27%	26%	20%	18%	18%	16%	11%	15%	14%		
Total Fatalities (bodies)	17	17	19	14	13	11	6	13	9	13	8	11	1	11	
Per 100,000 (incl. Takoma Park)		1.8	2.0	1.4	1.3	1.1	0.6	1.3	0.9	1.3	0.8				

Red Text = The number is preliminary and could be subject to change.

"Level 4" Injury Severity (Suspected Serious Injured)= The person was recorded as being disabled (Incapacitated) or 'Suspected Serious Injured' due to the accident.

"Level 5" Injury Severity (Fatal Injury) = The person was recorded to be dead or died due to the accident.

CY2015 and moving forward will included related collision reports written by MCPD, RCMP, GCPD, and MNPP. Before CY2016 only MCPD, PCD, and GCPD were included.

Pedestrian Type = 'Pedestrian', 'Other', 'Other Conveyance', and 'Machine Operator/Rider'



Enforcement - Bicyclist Crash Data

Source: Montgomery County Police Department

* All numbers reflect MCPD's number count of recorded bicyclist related vehicle accident reports provide should be considered preliminary.

	2007	2008	2009	2010	2011	2012	2013	2014	2015	2016	2017	2018	2007 thru 2016 (Average)	2007 thru 2016 (Running Months Accumulative Average Total)
January	1	5	5	5	2	5	11	5	2	5	3	5	4.50	5
February	0	5	1	1	3	4	1	1	1	3	9	7	3.00	8
March	6	2	3	5	3	8	2	2	3	9	6	5	4.50	13
April	6	2	10	17	9	11	6	10	8	12	13	11	9.58	22
May	15	8	16	11	13	18	9	16	18	9	13	4	12.50	35
June	13	12	15	17	19	24	7	19	27	18	16		17.00	52
July	21	18	14	24	12	11	9	18	15	18	16		16.00	68
August	13	15	11	15	18	24	17	12	21	27	18		17.36	85
September	20	8	19	17	19	20	20	11	14	17	15		16.36	101
October	9	11	12	15	10	13	10	11	21	14	14		12.73	114
November	7	5	6	5	11	6	5	9	10	9	11		7.64	122
December	6	6	4	2	6	1	5	7	9	5	4		5.00	127
Total Collisions	117	97	116	134	125	145	102	121	149	146	138	32	119	
Per 100,000 (incl. Takoma Park)	12.4	10.2	11.9	13.7	12.6	14.4	10.0	11.8	14.4	14.0				
Serious Bicyclist Collisions Totals (Level 4 & 5)	20	13	22	17	13	21	16	16	13	20	12	3	16	
Serious Bicyclist Collisions as a % of All Bicyclist Collisions (Level 4 & 5)	17%	13%	19%	13%	10%	14%	16%	13%	9%	14%	9%	9%		
Total Fatalities (bodies)	1	0	1	1	1	1	1	1	3	3	0	0	1	
Per 100,000 (incl. Takoma Park)	0.1	0.0	0.1	0.1	0.1	0.1	0.1	0.1	0.3	0.3				

Red Text = The number is preliminary and could be subject to change.

"Level 4" Injury Severity (Suspected Serious Injured)= The person was recorded as being disabled (Incapacitated) or 'Suspected Serious Injured' due to the accident.

"Level 5" Injury Severity (Fatal Injury) = The person was recorded to be dead or died due to the accident.

CY2015 and moving forward will included related collision reports written by MCPD, RCPD, GCPD, and MNPP. Before CY2016 only MCPD, PCD, and GCPD were included.

Bicyclist Type = 'Bicyclist' and 'Other Pedalcyclist'



VISION ZERO

**NO TRAFFIC DEATHS BY 2030
IN MONTGOMERY COUNTY**

Photo Credit: Flickr/[BeyondDC](#),
Licensed under [Creative Commons](#)

**OUR PLAN TO ELIMINATE FATALITIES AND
SEVERE INJURIES ON OUR ROADS BY 2030**

TWO-YEAR ACTION PLAN • UPDATE TO PBTSAC • 05/24/18

Severe and
Fatal Crashes
through April

Equity Task
Force
Members
Needed

Distracted
Driving
Awareness
Month

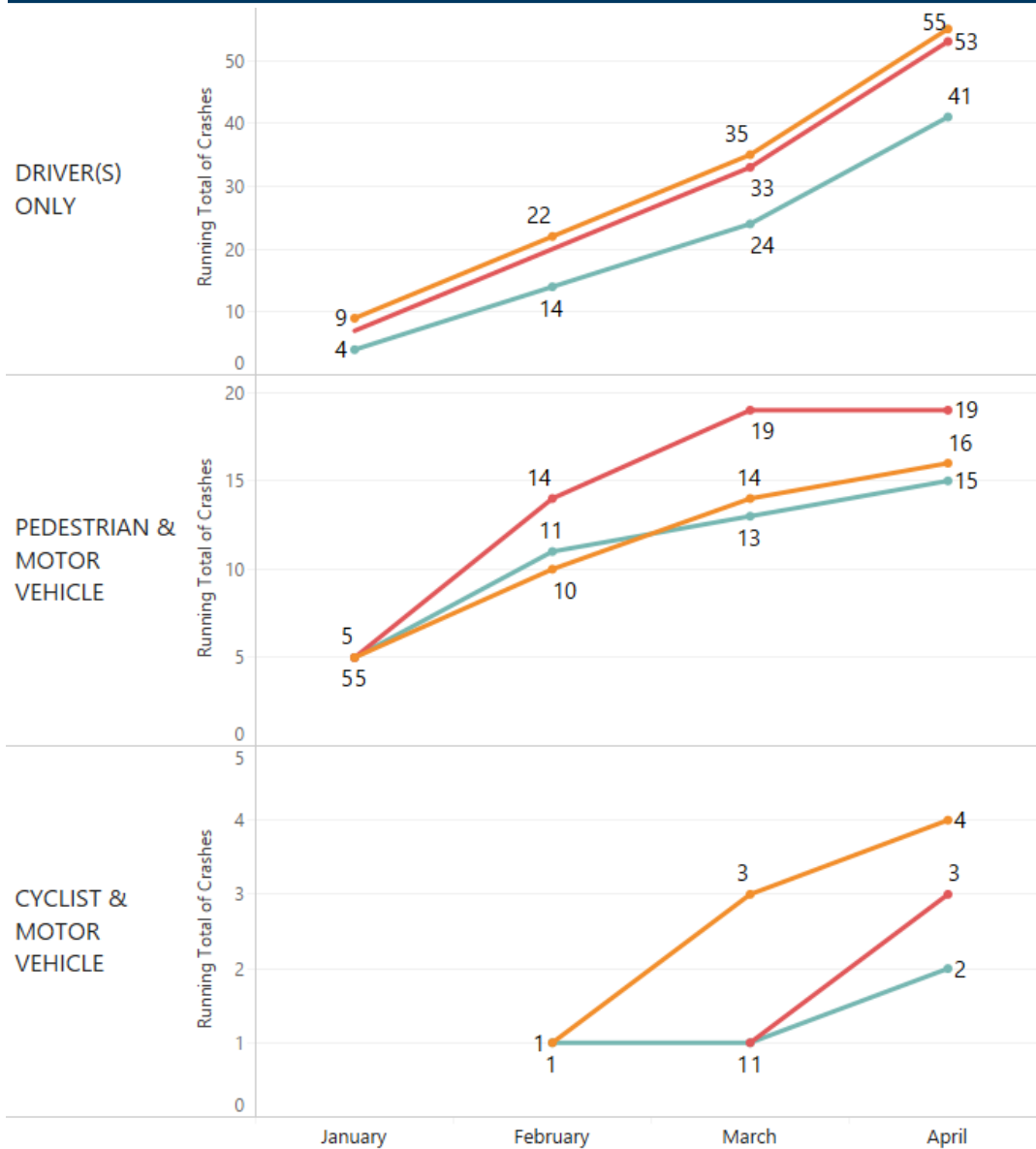
Noah on
Patrol

Relaunch of
VZ Website
and Data
Visualization

Status of
Action Items

SERIOUS AND FATAL CRASHES THROUGH APRIL

Running Total for Severe Crashes



From January – April for each year shown

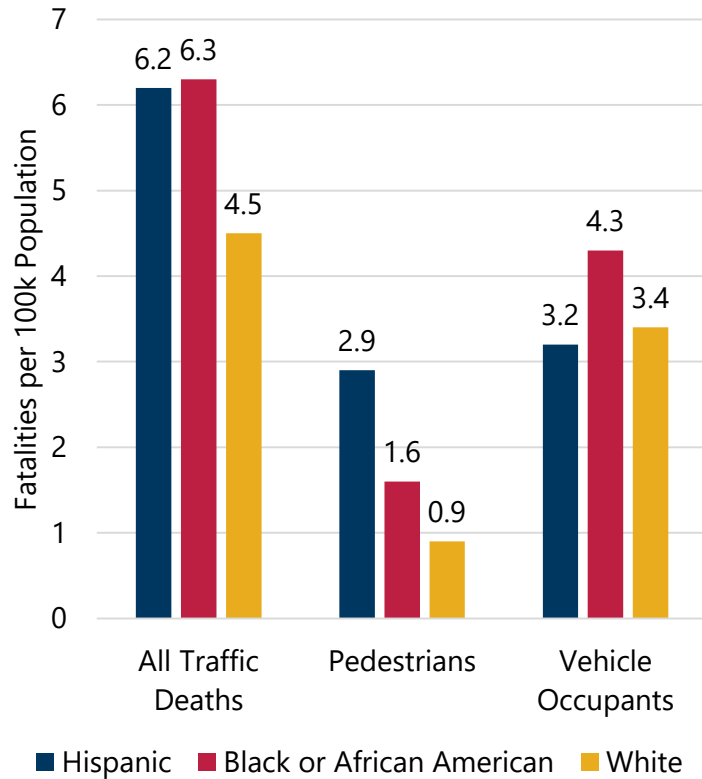
Person(s) Involved	2016	2017	2018*	17 to 18 Change
Drivers	55	53	41	✓ -12
Pedestrians	15	19	15	✓ -4
Cyclists	4	3	2	✓ -1
TOTAL	74	75	58	✓ -17

*2018 data are preliminary and subject to change
Does not include passenger injuries & fatalities

Legend

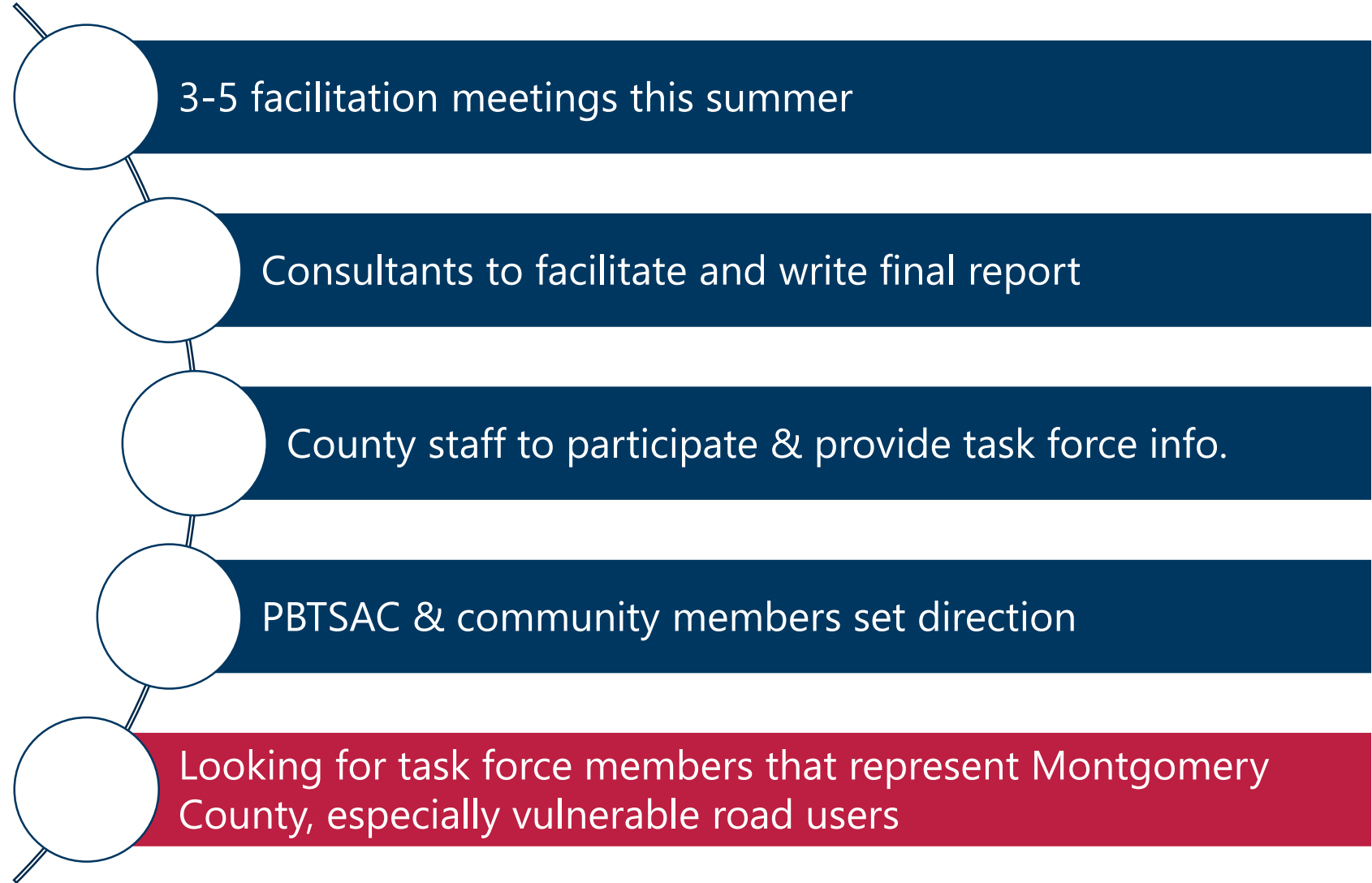
- 2016
- 2017
- 2018

Hispanic and Non-Hispanic Black/African American residents have a 33% higher traffic fatality rate compared to Non-Hispanic White residents.



Source: Centers for Disease Control and Prevention, National Center for Health Statistics. Underlying Cause of Death 2011-2015 on CDC WONDER Online Database, released December 2016.

Note: Rates for cyclists and Asian/Pacific Islander not shown due to rates that fell below the reporting threshold.



DISTRACTED DRIVING MONTH LAUNCH



STAY ALERT ▪ STAY ALIVE ▪ DON'T DRIVE OR WALK DISTRACTED

VISION ZERO

 NO TRAFFIC DEATHS BY 2030

montgomerycountymd.gov/visionzero

Look up or pay up: Montgomery Co. cracking down on distracted drivers



By [Kristi King](#) | [@KingWTOP](#)
April 5, 2018 6:11 pm



Distracted-driving sting in Montgomery Co. snags 65 drivers; more to come



By [Megan Cloherty](#) | [@ClohertyWTOP](#)
April 5, 2018 4:48 am



County Plans Push To Enforce Distracted Driving Regulations

Over the next two months, county police officers will be pulling over drivers using cell phones



Condado de Montgomery anuncia campaña "Estate Alerto, Mantente Vivo"



NOAH ON PATROL – ENDING IMPAIRED DRIVING



POLICE OFFICER
NOAH'S LAW
MONTGOMERY COUNTY
MD

NOAH ON PATROL

Together, we can eliminate drunk driving!

@NoahOnPatrol #NoahOnPatrol
www.NoahOnPatrol.org



RELAUNCH OF WEBSITE

MontgomeryCountyMD.GOV
 Montgomery County Government

VZ Home About Action Plan Your Participation VZ Data Additional Resources Contact

VISIONZERO

NO TRAFFIC DEATHS BY 2030

VISION ZERO
NO TRAFFIC DEATHS BY 2030

Learn More About Vision Zero

The Vision Zero concept was created in Sweden in 1997 and is widely credited for significant reductions in fatal and severe collisions on Sweden's roads. Vision Zero came to the US in 2000 with Washington State adopting its Target Zero plan. As of October 2017, Vision Zero has spread to 31 jurisdictions across the US.

[Learn More](#)

MontgomeryCountyMD.GOV
 Montgomery County Government

VZ Home About Action Plan Your Participation VZ Data Additional Resources Contact

VISIONZERO

NO TRAFFIC DEATHS BY 2030

Your Participation

We need your help and input to eliminate severe and fatal collisions from Montgomery County's roads. Please see this page for the various ways you can contribute and participate by submitting a service request, pointing out a safety issue on the road, providing a general comment to help realize Vision Zero's goal, or checking out our safety educational resources. You can also follow us on social media for updates and to share the Vision Zero message.



Vision Zero Participation Gateway

<h4>Service Requests</h4> <p>Request a fix for current roads, sidewalks, lights, pedestrian and bicycle facilities, etc.</p>	<h4>Safety Concerns</h4> <p>Bring to our attention unsafe facilities and behaviors in Montgomery County.</p>	<h4>General Feedback</h4> <p>Let us know what you think about or how to improve Vision Zero Montgomery County.</p>	<h4>Educational Resources</h4> <p>Learn about helpful safety tips that will help facilitate our Vision Zero goals.</p>
--	--	--	--

Montgomery County Initiates VisionZero

Montgomery County will be one of the first county governments in the United States to initiate a Vision Zero plan. The County is putting resources in place to reduce severe and fatal collisions on County roads by 35 percent for vehicle occupants, bicyclists and pedestrians, by November 2019.

Project and Activity Updates

Post Header
3/6/2018

modo ligula eget dolor. Aenean massa. Cum sociis natoque penatibus et magnis dis parturient montes, nascetur ridiculus mus. Donec quam felis, ultricies nec, pellentesque eu, pretium quis, sem. Nulla consequat massa quis enim. Donec pede justo, fringilla vel, aliquet nec, vulputate eget, arcu. In enim justo, rhoncus ut, imperd ut libero venenatis faucibus. Nullam quis ante. Etiam sit amet orci eget eros faucibus tincidunt. Duis leo.

Post Header
3/6/2018

modo ligula eget dolor. Aenean massa. Cum sociis natoque penatibus et magnis dis parturient montes, nascetur ridiculus mus. Donec quam felis, ultricies nec, pellentesque eu, pretium quis, sem. Nulla consequat massa quis enim. Donec pede justo, fringilla vel, aliquet nec, vulputate eget, arcu. In enim justo, rhoncus ut, imperd ut libero venenatis faucibus. Nullam quis ante. Etiam sit amet orci eget eros faucibus tincidunt. Duis leo.

Post Header
3/6/2018

modo ligula eget dolor. Aenean massa. Cum sociis natoque penatibus et magnis dis parturient montes, nascetur ridiculus mus. Donec quam felis, ultricies nec, pellentesque eu, pretium quis, sem. Nulla consequat massa quis enim. Donec pede justo, fringilla vel, aliquet nec, vulputate eget, arcu. In enim justo, rhoncus ut, imperd ut libero venenatis faucibus. Nullam quis ante. Etiam sit amet orci eget eros faucibus tincidunt. Duis leo.

Tweets by @VisionZeroMD

Mont Co Vision Zero Reviewed

Pete Piringer @mctsPIO
Frederick Road and W. Gude Dr., Derwood, pedestrian struck, EMS transporting 1 adult Pri3 NLT

Mont Co Vision Zero @VisionZeroMD
Job opening! @MODOTNow is hiring a Capital Projects Manager to coordinate traffic safety projects, complete Vision Zero action items, and support the traffic safety advisory committee. Search for job opening IRC31605 & apply by June 9th. ext12.montgomerycountymd.gov/rec_home/lec...

May 22, 2016

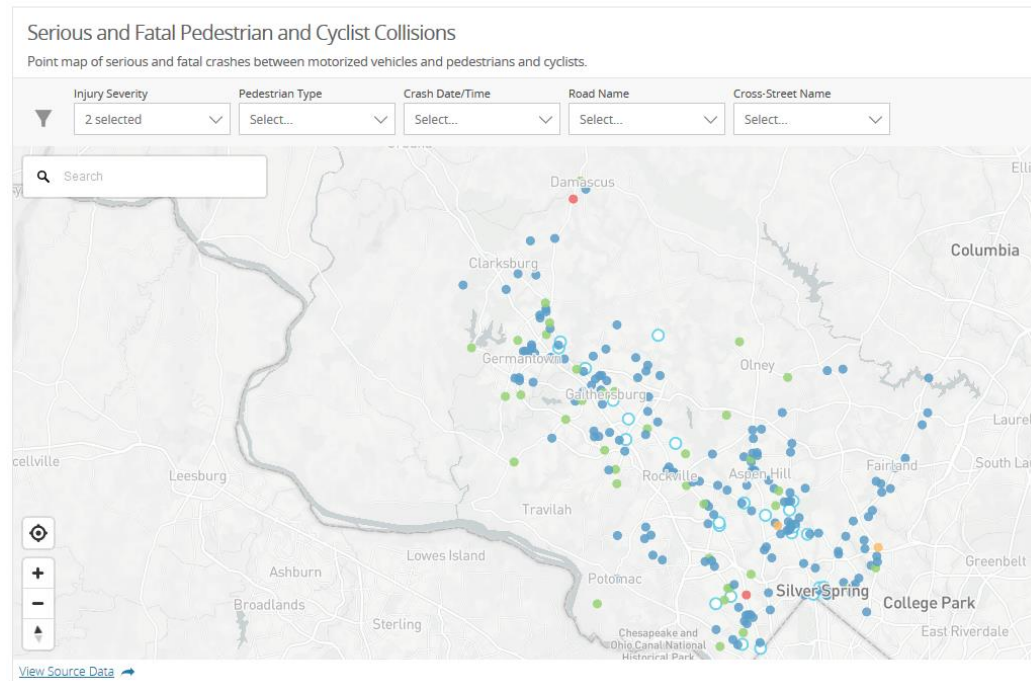
Embed View on Twitter

Montgomery County Vision Zero Progress Table

Upcoming Vision Zero Outreach Events
[CLICK HERE](#)

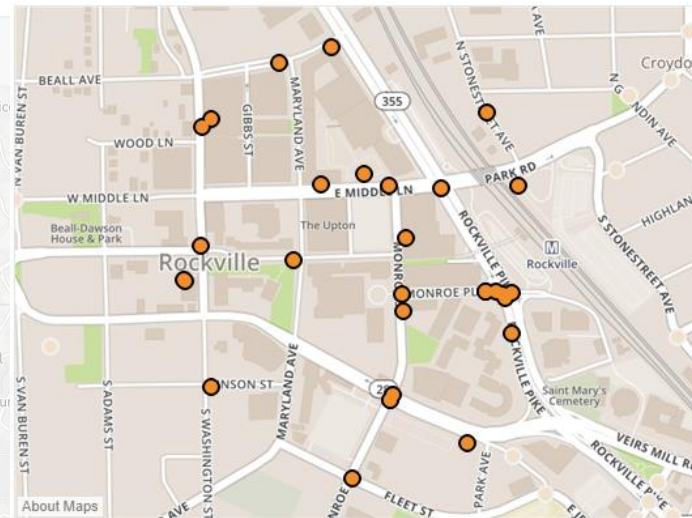
Serious and Fatal Pedestrian and Cyclist Collisions

Use the map and filters below to explore serious and fatal pedestrian and cyclist collisions occurring in the county. To see only pedestrians or cyclists, change the "Pedestrian Type" filter at the top. Hover your mouse over or click a collision to see more details.

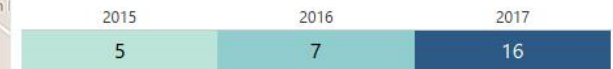


VISION ZERO County Crash Explorer Data last updated: 5/23/2018

Year: (All) | Roadway Owner: (All) | Road Name: (All) | Intersecting Roadname: (All) | Municipality: (All) | Highest Injury Level: (All) | YTD Filter: (All)



Crashes by Year



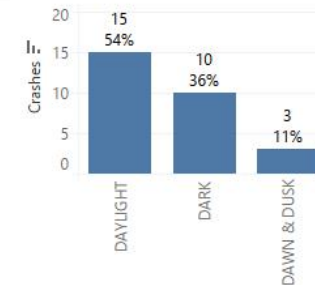
Persons Involved



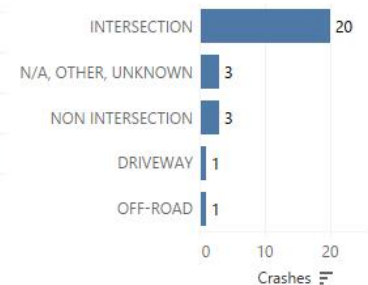
Highest Injury



Lighting Condition



Junction



Time of Day





Engineering

- Design facilities that prioritize safety above all else
- Key Outcome: Reductions in severe and fatal collisions in High Injury Network (HIN)



Enforcement

- Encourage safe behaviors using evidence-based high visibility enforcement
- Key Outcome: Hours of dedicated enforcement for factors contributing to severe and fatal collisions



Education

- Engage the public to promote the importance of traffic laws and safe behaviors
- Key Outcome: Increased awareness of dangerous driving, biking, and walking behaviors



Traffic Incident Management

- Ensure that when a collision occurs, prompt care is provided
- Key Outcome: Maintain response times for traffic collisions with injuries based on dept. standards



Law, Policy, and Advocacy

- Improve the way traffic safety is managed by changing codes, laws, and policies that do not align with Vision Zero
- Key Outcome: Passage of significant laws and policies required to implement Vision Zero

TWO-YEAR ACTION PLAN STATUS - ENGINEERING



Action Item	Due Date	Status	Notes
ENG-1 Identify HINs for Modification	Identify priority HIN projects by 1/31/2018	Behind Schedule	1st round of reviews with county and state engineers complete. Each review used the top 10 crash locations identified in the action plan. Will be setting up next round of reviews.
ENG-2 Road Design Standards	Publish revised road designs by 11/1/2019	On-Going & On-Schedule	MCDOT and M-NCPPC are advancing this action item together, with the first phase being funded by M-NCPPC. MCDOT has engaged a consulting team to assist and are scoping the effort now.
ENG-3 Road Safety Audits	Implement new process by 11/1/2018	On-Going & On-Schedule	MCDOT is adding a preconstruction RSA activity to its design process
ENG-4 Review Transit Stops	Develop program review requirements by 5/1/2018	On-Going & On-Schedule	MCDOT identified 265 bus stops that need to be reviewed and potentially modified.
ENG-5 Trail Crossings	Develop list of priority trail crossings and intersections for modification by 11/1/2018	On-Going & On-Schedule	Parks will implement a pilot project to improve 18 mid-block crossings. The first review of the CCT crossing with Little Falls Parkway is on 6/13, details at https://www.montgomeryparks.org/projects/directory/capital-crescent-trail-crossing-at-little-falls-parkway/
ENG-6 Collaboration w State	Identify potential project areas by 1/1/18	Behind Schedule	1st review session held with State on 3/26. Exact project locations and timelines to be finalized.
ENG-7 Ped Signals	All pedestrian signals retimed to 3.5 feet/second by November 2019	On-Going & On-Schedule	Plan for 3 HAWK signals in spring/summer 2018 with 2 additional pedestrian actuated beacons
ENG-8 Accelerate Sidewalk Building	Publish list of high priority areas lacking sidewalks by 4/1/18	Behind Schedule	A priority list has not yet been developed. Upcoming projects include 11 projects planned in FY19 under sidewalk and curb replacement CIP. Phase I of Oak Dr/MD 27 sidewalk of 4,550 linear feet. Franklin Ave sidewalk in funded in FY23.
ENG-9 Bicycle Network	On-going effort	On-Going & On-Schedule	Significant additions coming to Silver Spring and Bethesda BiPPAs for separated bicycle facilities. Learn about how to use these new facilities at montgomerycountymd.gov/lookout

TWO-YEAR ACTION PLAN STATUS - ENFORCEMENT



Action Item	Due Date	Status	Notes
ENF-1 Fatal Crash Review Team	Establish team and hold first meeting by 12/15/17	Behind Schedule	Need to set team members and parameters of meeting prior to having 1st review session.
ENF-2 Enforcement Activity	On-going effort	On-Going & On-Schedule	April distracted driving month resulted in 1,400 warnings and citations for hand-held device use and texting from MCPD officers, 40% more than in April 2017. MCPD also performed 20 pedestrian safety enforcement operations around county schools in conjunction with ped safety week at MCPS. May is a focus on motorcycle safety and vehicle occupant protection.
ENF-3 Automated Enforcement	On-going effort	On-Going & On-Schedule	Will be addressed in new request for proposals that is due to be let out in 2019.
ENF-4 Unmarked Cars	Purchase and use more unmarked cars by 12/1/18	No Resources	Due to budget constraints, the FY19 budget does not fund this item
ENF-5 Collaboration w/ Courts	Complete initial outreach by 5/1/18	On-Going & On-Schedule	A public-private education campaign called "Noah on Patrol" was released on May 23. As part of "Noah on Patrol," a courtwatch program will monitor impaired driving cases in the county. The State's Attorney Office will push for ignition interlocks in impairment cases.

TWO-YEAR ACTION PLAN STATUS - EDUCATION



Action Item	Due Date	Status	Notes
EDU-1 Comprehensive Strategy	Publish Strategy by 5/1/18	Behind Schedule	Lorraine from PIO has started working on the strategy. First draft is nearing completion.
EDU-2 Expand SRTS	Expand SRTS by start of 2019-2020 school year	On-Going & On Schedule	2 comprehensive evaluations are scheduled for spring 2018 (\$150k). 51 schools participated (registered) for walk to school day in 2017 and 10 for bike to school day in 2018. SRTS will grow as it is one of five pillars of Montgomery County's Transforming Community Initiative. Learn more at https://www.institutephi.org/our-work-in-action/policy-health-systems-improvement/healthymontgomerytci/
EDU-3 On-bike Education	Agreement with MCPS by 19-20 school year	Not Started	Year 2 activity
EDU-4 Grant Program	Solicit proposals by 6/1/2018	No Resources	Due to budget constraints, the FY19 recommended budget does not fund this item
EDU-5 County Employee Safety Campaigns	Complete first round of awareness trainings by 11/1/2018	On-Going & On Schedule	In April, MCFRS, MCDOT, and MCPD employees were sent information about distracted driving. Currently developing targeted material for key departments and divisions.
EDU-6 Team Building	Hold at least two collaboration events by 11/1/2018	Not Started	Currently developing potential opportunities for employees this summer
EDU-7 Sleep & Safety	Complete first round of awareness trainings by 11/1/2018	Not Started	
EDU-8 Future Tech	1st Report by 12/31/2018	Not Started	
EDU-9 Community Partners	12/1/2018	On-going	CountyStat has met with all 5 TMDs and working with large employer to use education materials on-site.

TWO-YEAR ACTION PLAN STATUS - TIM

Action Item	Due Date	Status	Notes
TIM-1 Emergency Services	On-going effort	On-going	
TIM-2 TIM Plan	Create plan by 11/1/2018	Behind Schedule	
TIM-3 Police Driver Training	Improve driver training by 11/1/2019	Not Started	
TIM-4 Temporary Traffic Control Devices	Procure traffic control devices for a pilot program by 11/1/2018	No Resources	Due to budget constraints, the FY19 recommended budget does not fund this item

TWO-YEAR ACTION PLAN STATUS - LPA

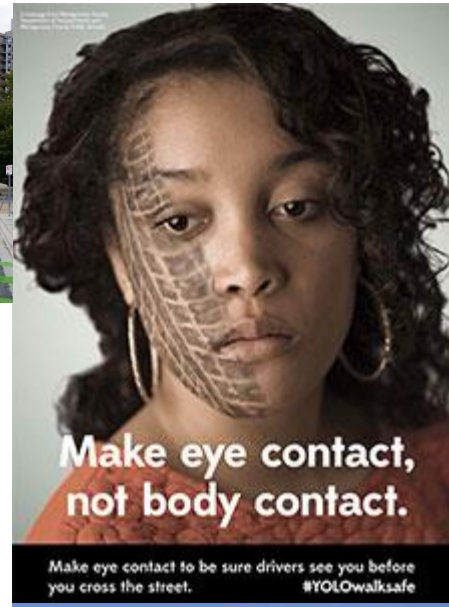


Action Item	Due Date	Status	Notes
LPA-1 Law & Policy Change	Identify changes needed by 12/1/2017	Behind Schedule	With the release of the Action Plan in November, there was not sufficient time to identify gaps and draft proposed legislation. The steering committee will develop recommendations for the 2019 session this summer.
LPA-2 Equity Task Force	Establish task force by 12/31/17	Behind Schedule	Steering committee and PBTSAC have decided to make this task force a sub-committee of PBTSAC. Need to find members of task force. A contractor has been secured by CountyStat to aid in developing task force report.
LPA-3 VZ Manager	Appoint interim manager 11/17 with full-time coordinator by 1/31/18	Behind Schedule	FY19 budget will fund a person to coordinate and implement the Vision Zero Action Plan.
LPA-4 VZ Website	Have full page build-out by 11/30/17	Behind Schedule	Website layout is complete. CountyStat, DTS-GIS, and PIO are adding in last pieces to have full launch in June.
LPA-5 VZ Feedback Map	Publish map by 11/30/17	Behind Schedule	DTS/GIS has built a first draft of the application. Wade has provided feedback and DTS/GIS is working on changes.
LPA-6 Ped Master Plan	Complete master plan by 11/1/2019	Not Started	Pedestrian connectivity mapping scheduled to start July 2018 and be complete at the end of FY19.

TWO-YEAR ACTION PLAN STATUS - LPA

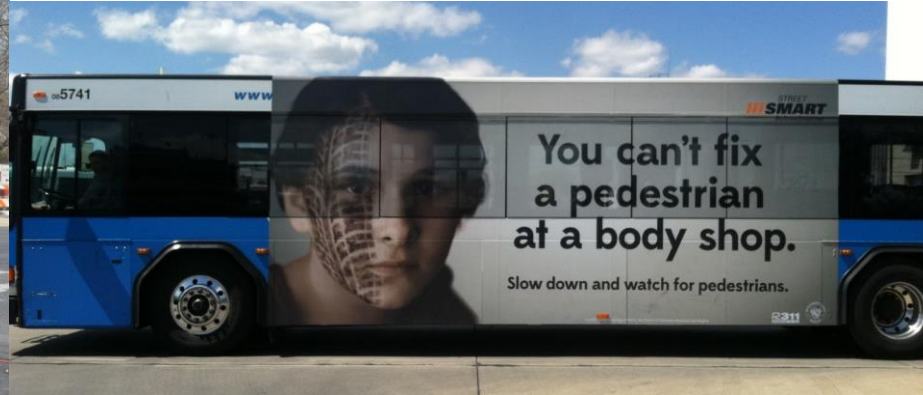


Action Item	Due Date	Status	Notes
LPA-7 Public Crash Data	Publish by 11/1/17	Complete	All 3 tables are published and updating weekly. CountyStat will use these tables to build out dashboard.
LPA-8 Improve Crash Data Collection	Start outreach by 11/30/17	On-Going & On Schedule	Currently MCPD has implemented training to address proper report writing within the academy classes as well as to audit reports for data entry errors. MSP has made some fields within the ACRS reports mandatory and some fields mandatory on dependencies to help in capturing all the relevant data per event.
LPA-9 Peer Collaboration	Start outreach by 12/1/17	Complete and On-Going	Montgomery County is a member of the Road to Zero coalition, works with the State as participants in Towards Zero Deaths, and started a regional vision zero cohort.
LPA-10 Review Safety Programs	Release results by 11/1/2018	Not Started	Plan to start review in summer 2018.
LPA-11 Municipalities	Complete initial outreach by 1/1/18	Behind Schedule	Work with municipalities has been informal to this point. CountyStat will work with CEX to identify proper municipal contacts once the new website is up and running.
LPA-12 Research Partners	Reach out to potential research partners by 1/1/18	On-Going & On Schedule	The County does not have funds to pay for research, but is open to participating or being a living laboratory for researchers. The County will reach out to local partners to gauge interest.
LPA-13 Vehicle Procurement	Finalize policy by 11/1/2018	Not Started	
LPA-14 10-Year Plan	Start feedback sessions in January 2019 , complete by November 2019	Not Started	Focus in spring and summer is on getting two-year plan up and running prior to starting 10-year plan development.

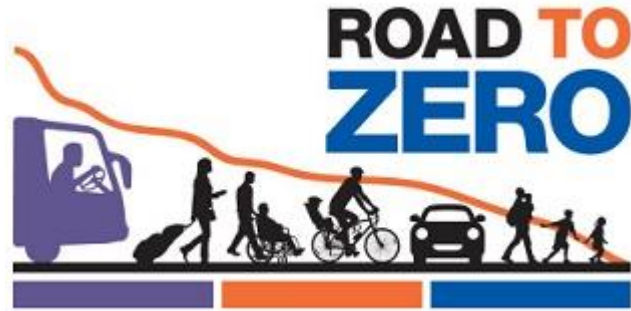


VISION ZERO

**NO TRAFFIC DEATHS BY 2030
IN MONTGOMERY COUNTY**



Road to Zero Coalition Member

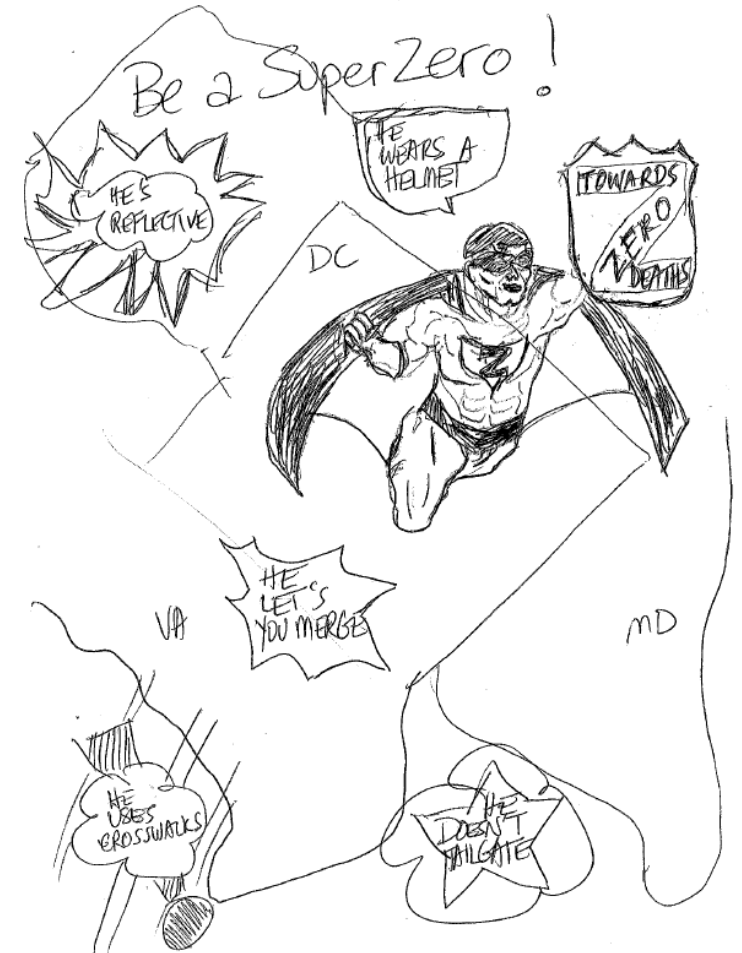


Coordination with MWCOG



Metropolitan Washington Council of Governments

DC Region Vision Zero Coordination



Cross-Agency Collaboration

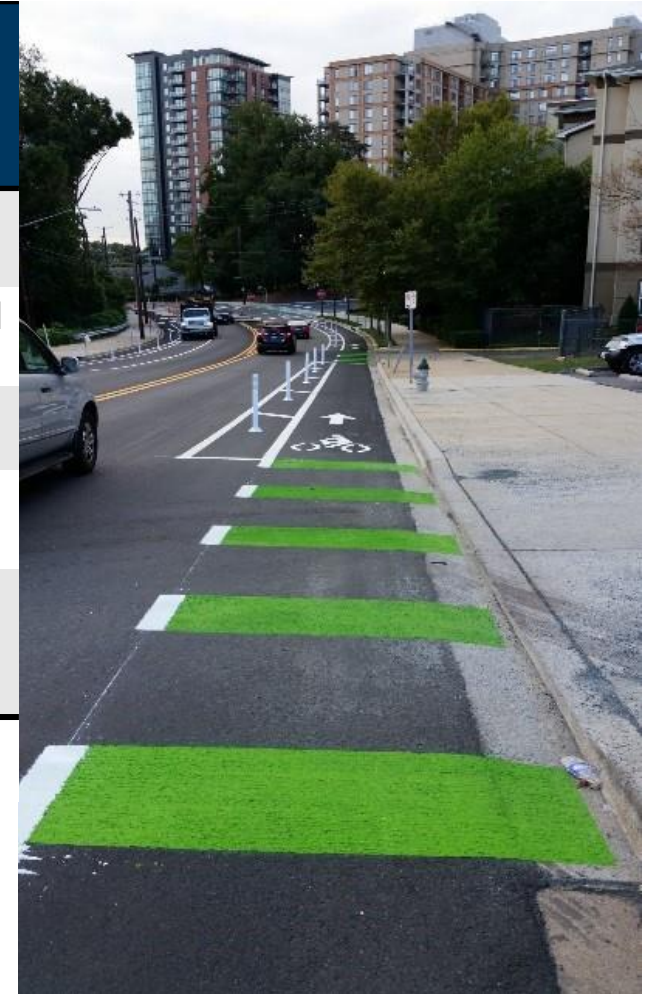


Collaboration with the State



FY19 RECOMMENDED CIP & PSP BUDGETS

Agency/Dept.	Budget	FY19 Rec. Budget	Highlights
Park & Planning	CIP	\$1,300,000	\$200k for improvements to trail crossings
Transportation	CIP	\$76,828,000	\$30.6M for pedestrian facilities and bikeways (excludes BRAC)
Transportation	PSP	\$14,150,334	\$619K for streetlighting
Police	PSP	\$26,014,889	\$180K for overtime to do high visibility enforcement
Public Information	PSP	\$50,000	Funds for coordination and implementation of county-wide education and outreach
TOTAL		\$118,343,223	



NOTE: Not all expenditures related to Vision Zero are shown above.

3 HAWK Signals in 2018

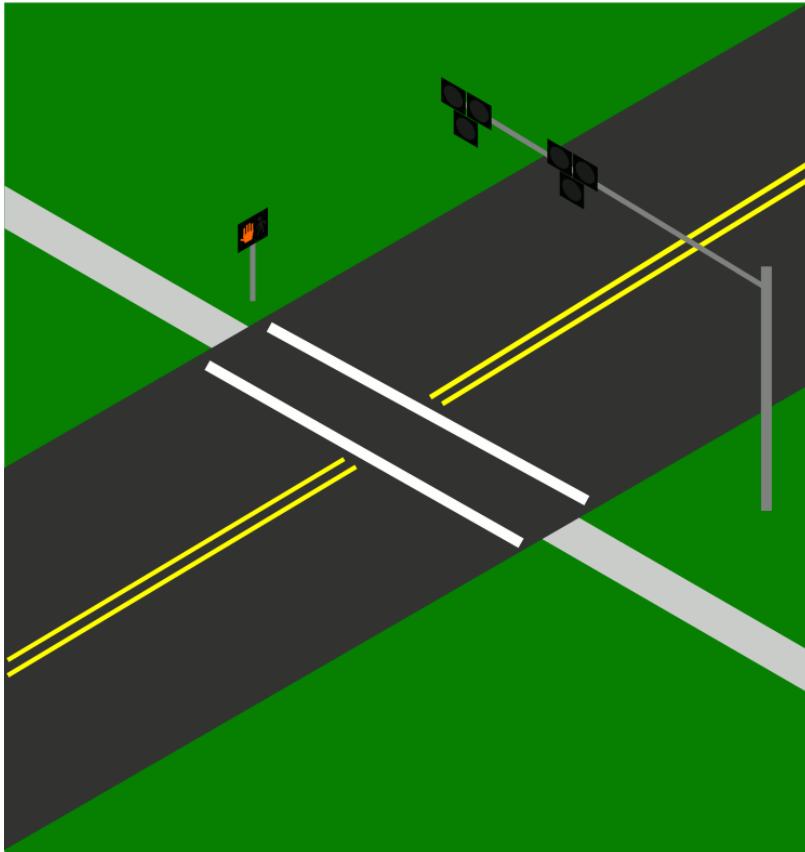
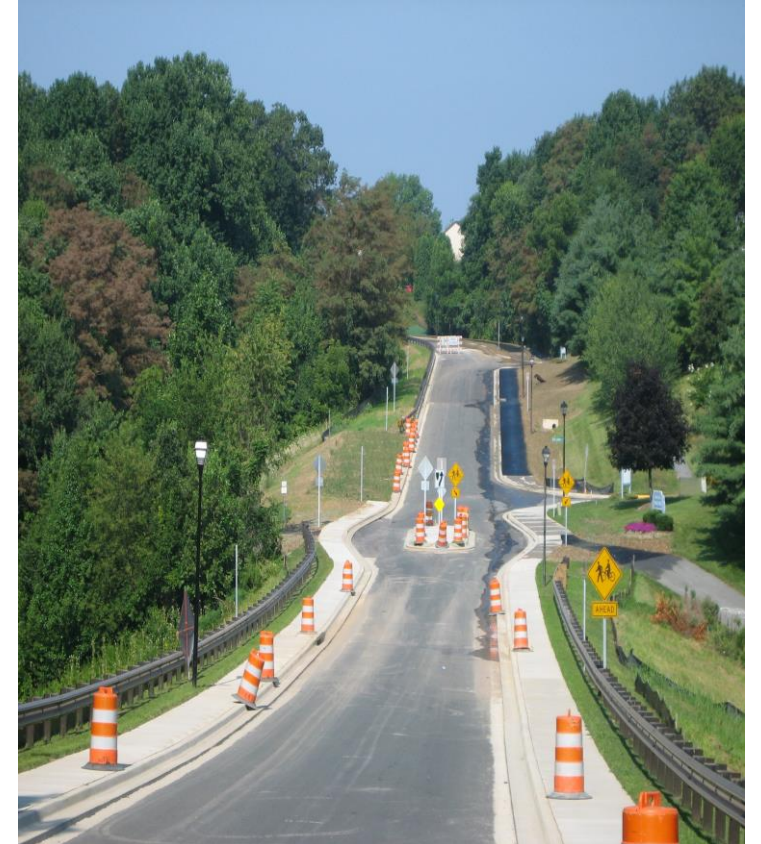


Photo Credit: Wikimedia/[KJBurns](#),
Licensed under [Creative Commons](#)

3 Ped Actuated Beacons in 2018



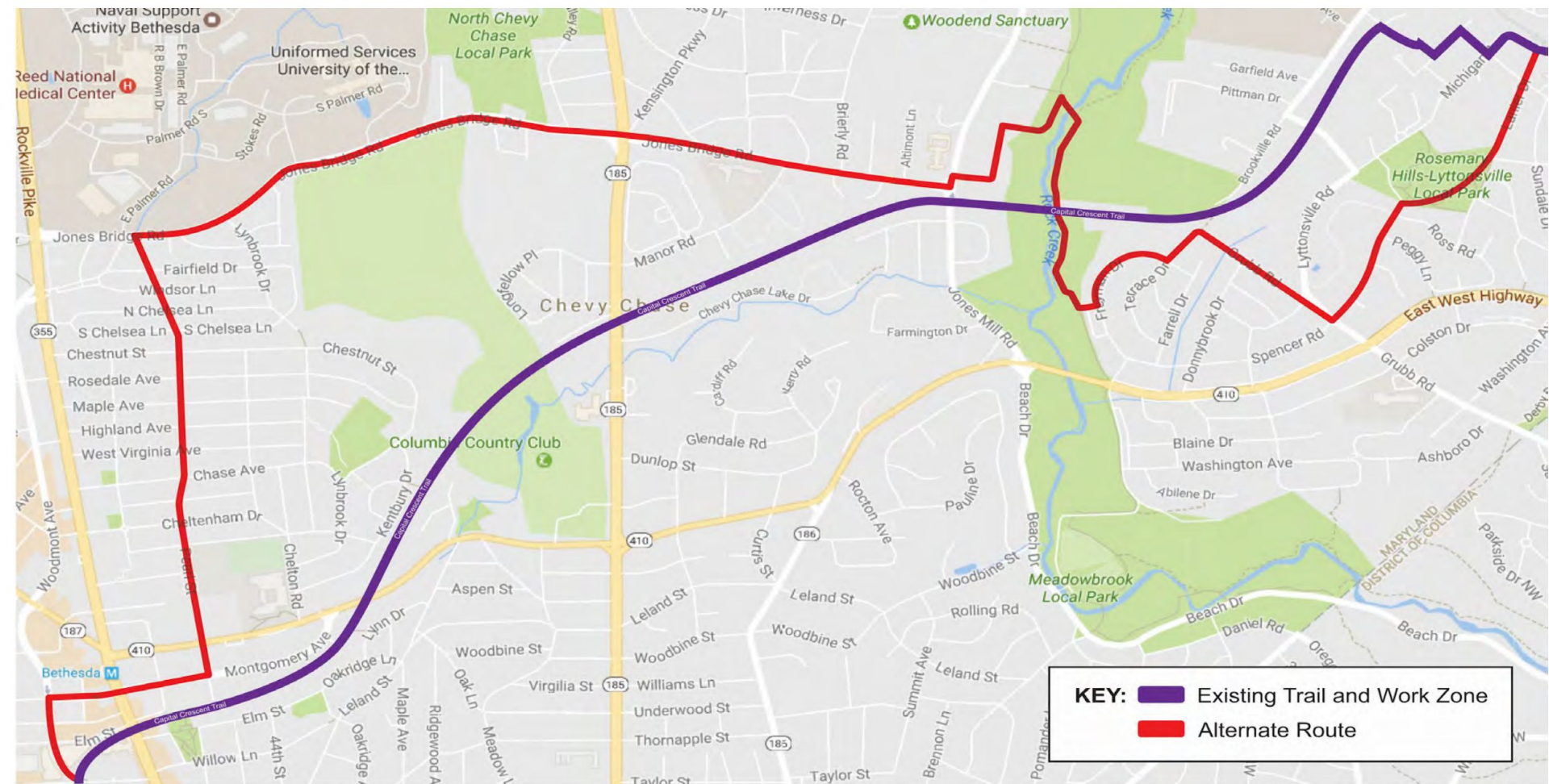
PRSA Improvements



Updates From WABA

Garrett Hennigan
Community Organizer





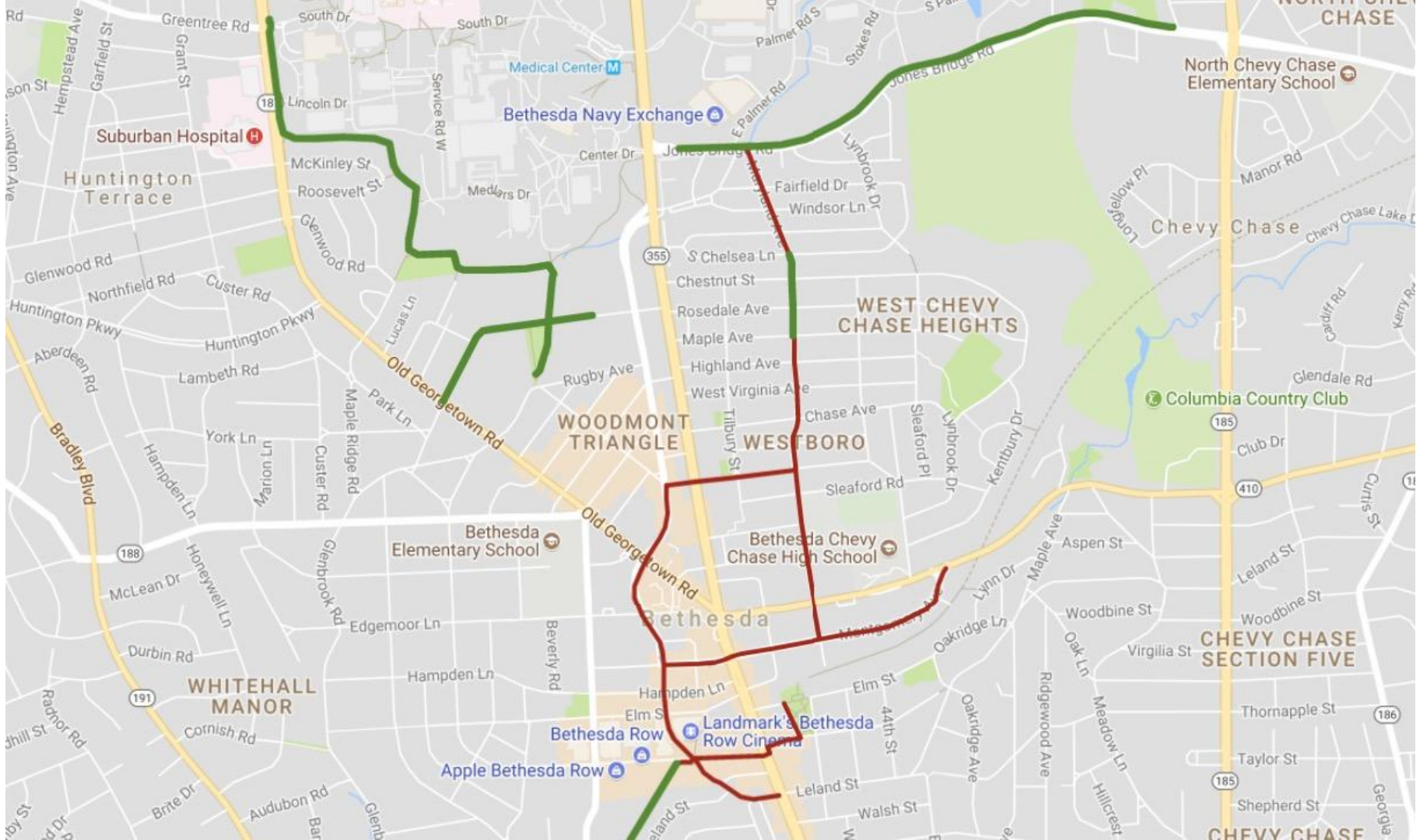
KEY: █ Existing Trail and Work Zone
█ Alternate Route

The signed detour route on Woodmont, Montgomery, Pearl, Maryland & Jones Bridge Rd

Solutions in the Bethesda Master Plan

Create great GBT alternatives and build out the Bethesda bicycle network





Suburban Hospital **H**

Bethesda Navy Exchange **B**

North Chevy Chase Elementary School **S**

WEST CHEVY CHASE HEIGHTS

WOODMONT TRIANGLE

WESTBORO

Columbia Country Club **C**

Bethesda Elementary School **S**

Bethesda Chevy Chase High School **S**

WHITEHALL MANOR

Bethesda Row **B**

Landmark's Bethesda Row Cinema **B**

Apple Bethesda Row **B**

CHEVY CHASE SECTION FIVE

CHEVY CHASE

The Core Bethesda Network

- **Woodmont Ave** – 2-way protected bike lane from Wisconsin Ave at Leland St to Norfolk Ave
- **Montgomery Ln / Ave** – 2-way protected bike lane from Woodmont Ave to Pearl St. and East West Highway
- **Pearl St / Maryland Ave Bikeway** – bike lanes and traffic calming
- **Norfolk Ave / Cheltenham Dr. Bikeway** – bike lanes and traffic-calmed neighborhood streets from Woodmont to Pearl St.
- **Capital Crescent Trail Surface Route** – a 2-way protected bike lane crossing Wisconsin Ave. from Woodmont Ave to Elm St via Bethesda Ave, Willow Ln and 47th St.

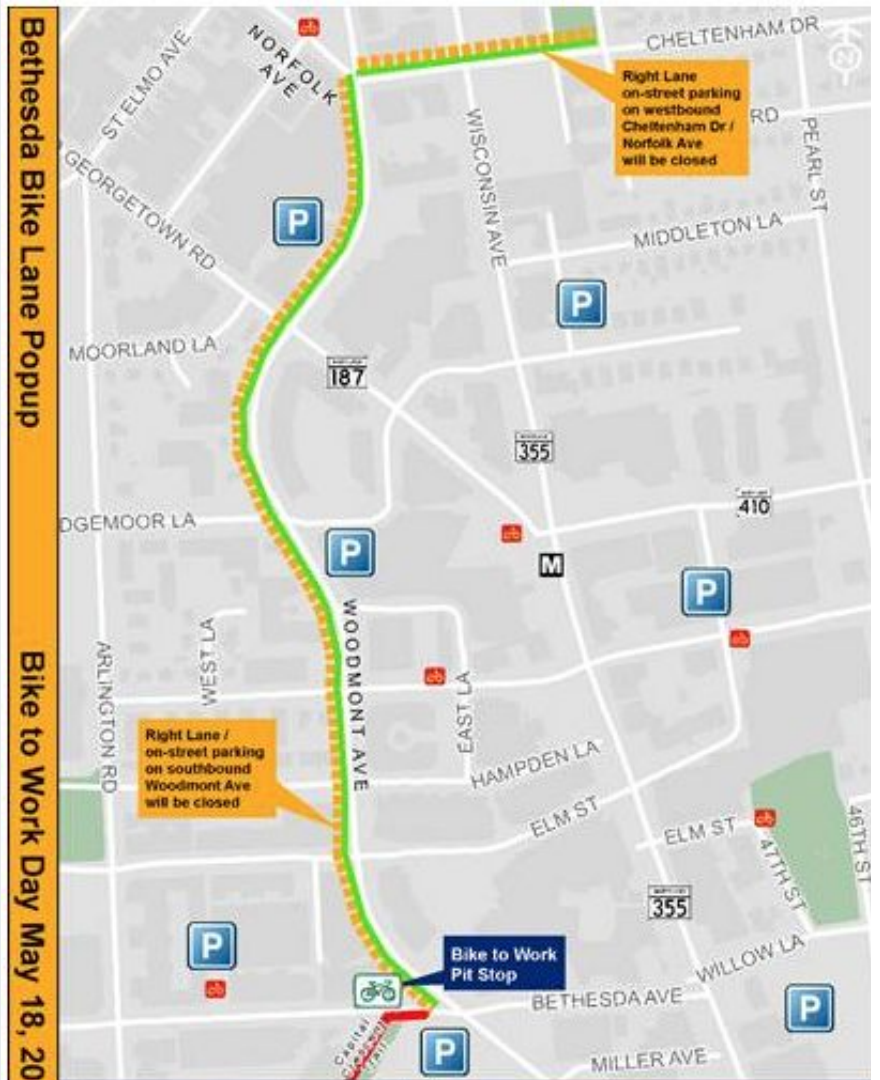


Commitments

- 750 petition signatures
- County Executive budgeted \$3 million to plan and build the network
- County Council adopted the budget this morning
- Planning is underway
- Construction begins next year on Woodmont Ave

Woodmont Ave Pop-Up Protected Bike Lane

MCDOT installed a pop-up lane for
Bike to Work Day





BIKE
LANE
ONLY







ROCK
SPRING
301-857-2700

DETOUR
AHEAD

RIGHT
LANE CLOSED
AHEAD

BIKE
LANE
ONLY

USE
PEDESTRIAN
SIGN

ELM STREET

TUR
VEHI

YIELD

Georgetown
Branch Trail
Detour
Bike Lane

56969H6



Elm St
4300 BLDG 4500 BLDG

ONLY

DETOUR
AHEAD

BIKE
LANE
ONLY

P

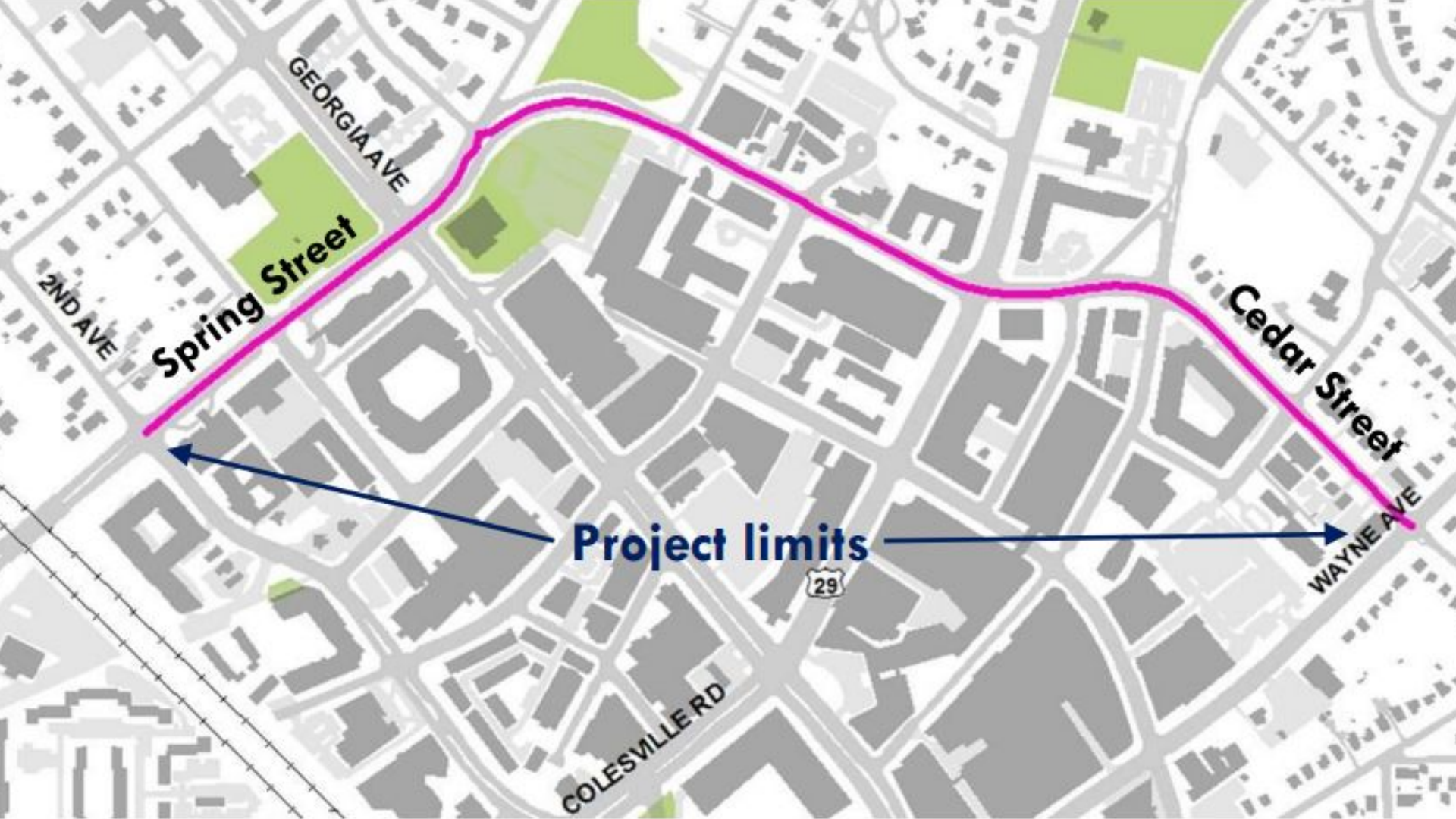
ROAD
CLOSED

USE
PED
SIGNAL

ELM STREET
TURNING
VEHICLES
YIELD TO

- Protected Bike Lane
- Other Bikeway
- Trail





GEORGIA AVE

Spring Street

2ND AVE

Cedar Street

WAYNE AVE

Project limits

29

COLESVILLE RD



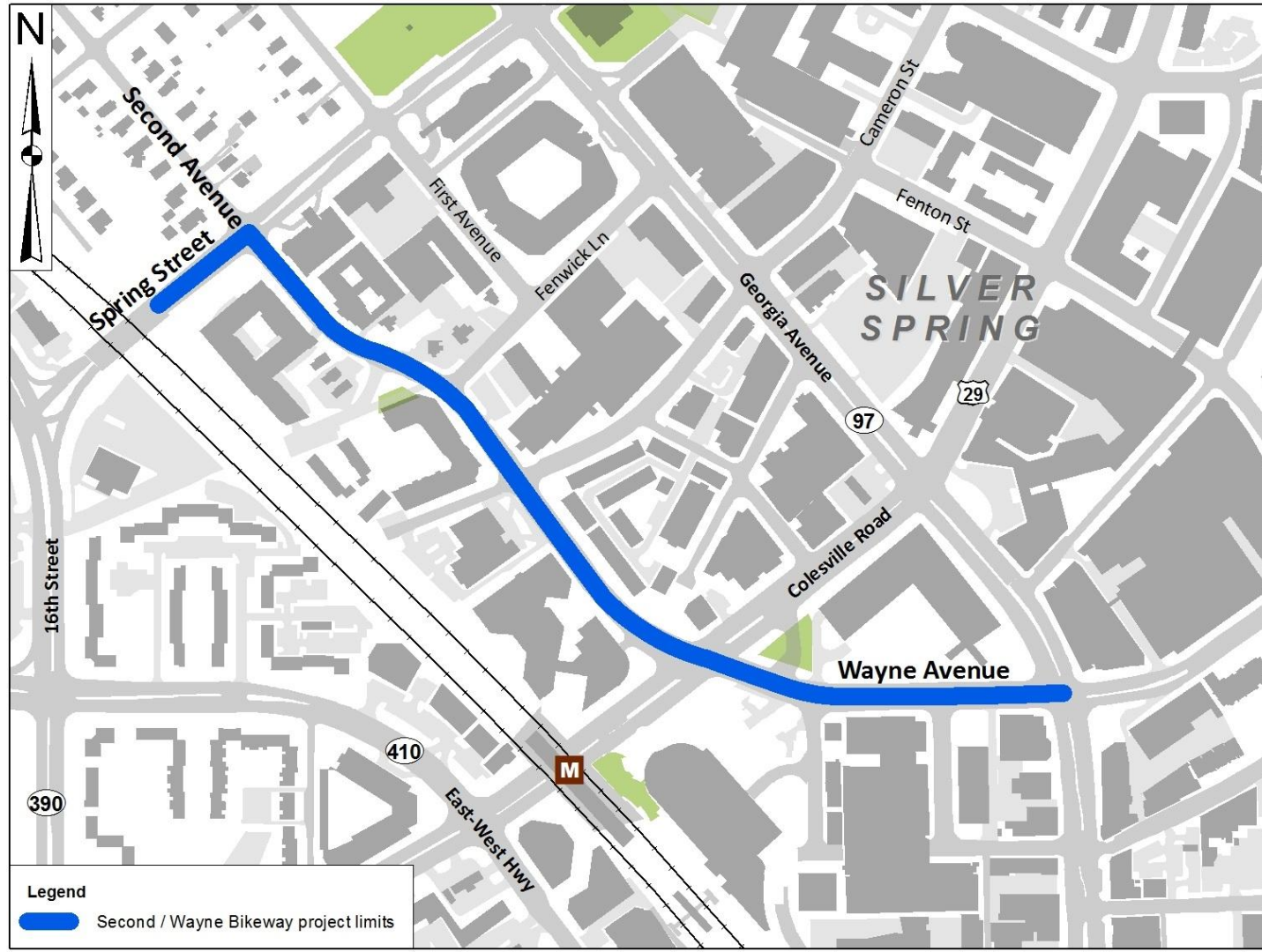
WABA
WASHINGTON AREA
BICYCLIST ASSOCIATION





MAJOR MEDICAL LTD

LEASE
991-9996
MR. MR.



WABA
WASHINGTON AREA
BICYCLIST ASSOCIATION

Silver Spring Social Rides

Planning Department sponsoring a series of rides

- Past Rides: Kruse to Kensington, Earth Day Ride, Silver Spring Art Ride
- **Memorial Day – Monday, May 28**
- **A Sweet Ride - Saturday, June 9**
- **Zoo Ride - Saturday June 23**

Register & Learn More: waba.org/silverspringrides

