



VISION ZERO

**NO TRAFFIC DEATHS BY 2030
IN MONTGOMERY COUNTY**

**OUR PLAN TO ELIMINATE FATALITIES AND
SEVERE INJURIES ON OUR ROADS BY 2030**

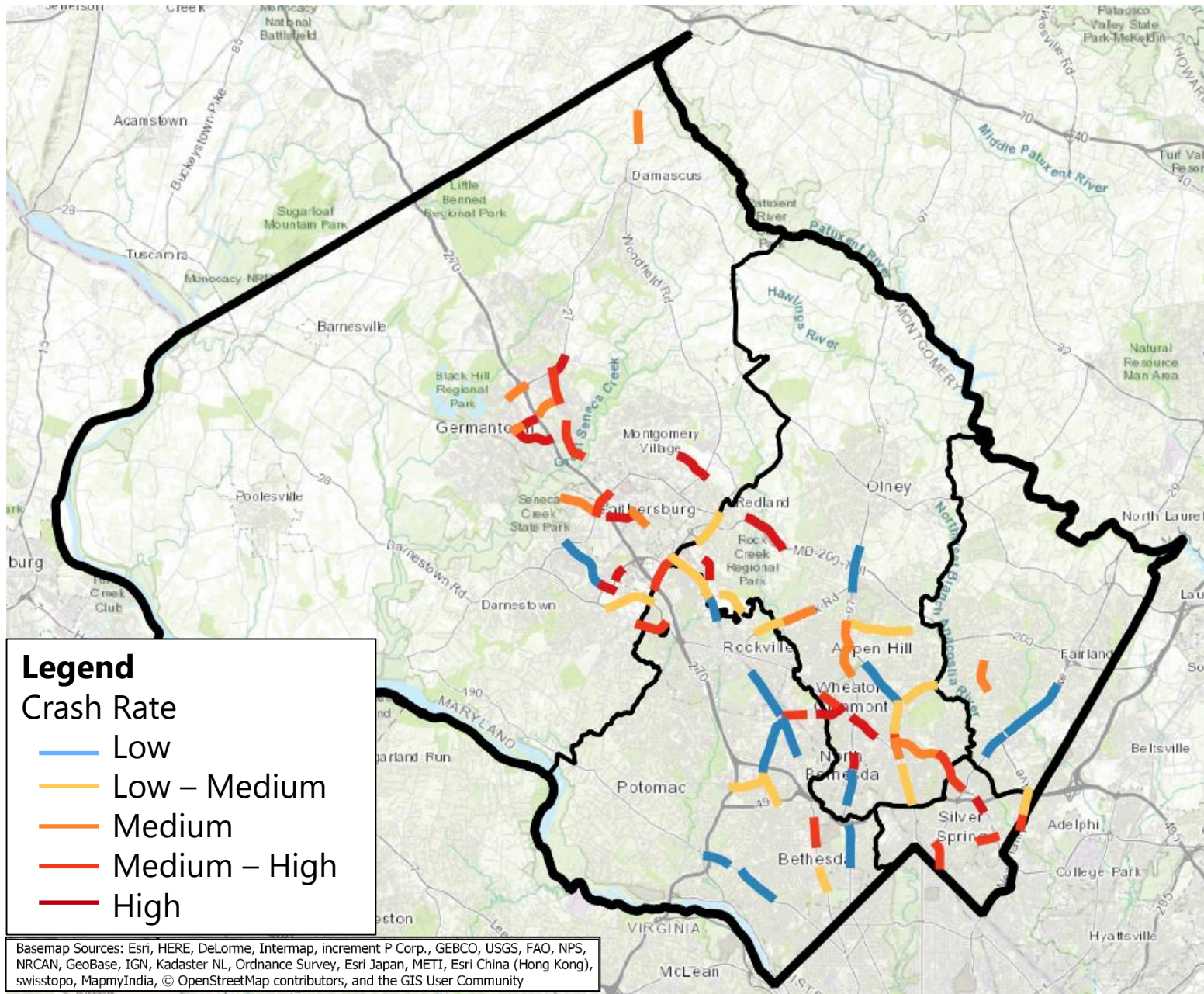
HIGH CRASH LOCATIONS • BETHESDA MEETING • 11/21/2019



BETHESDA- CHEVY CHASE CRASH STATISTICS



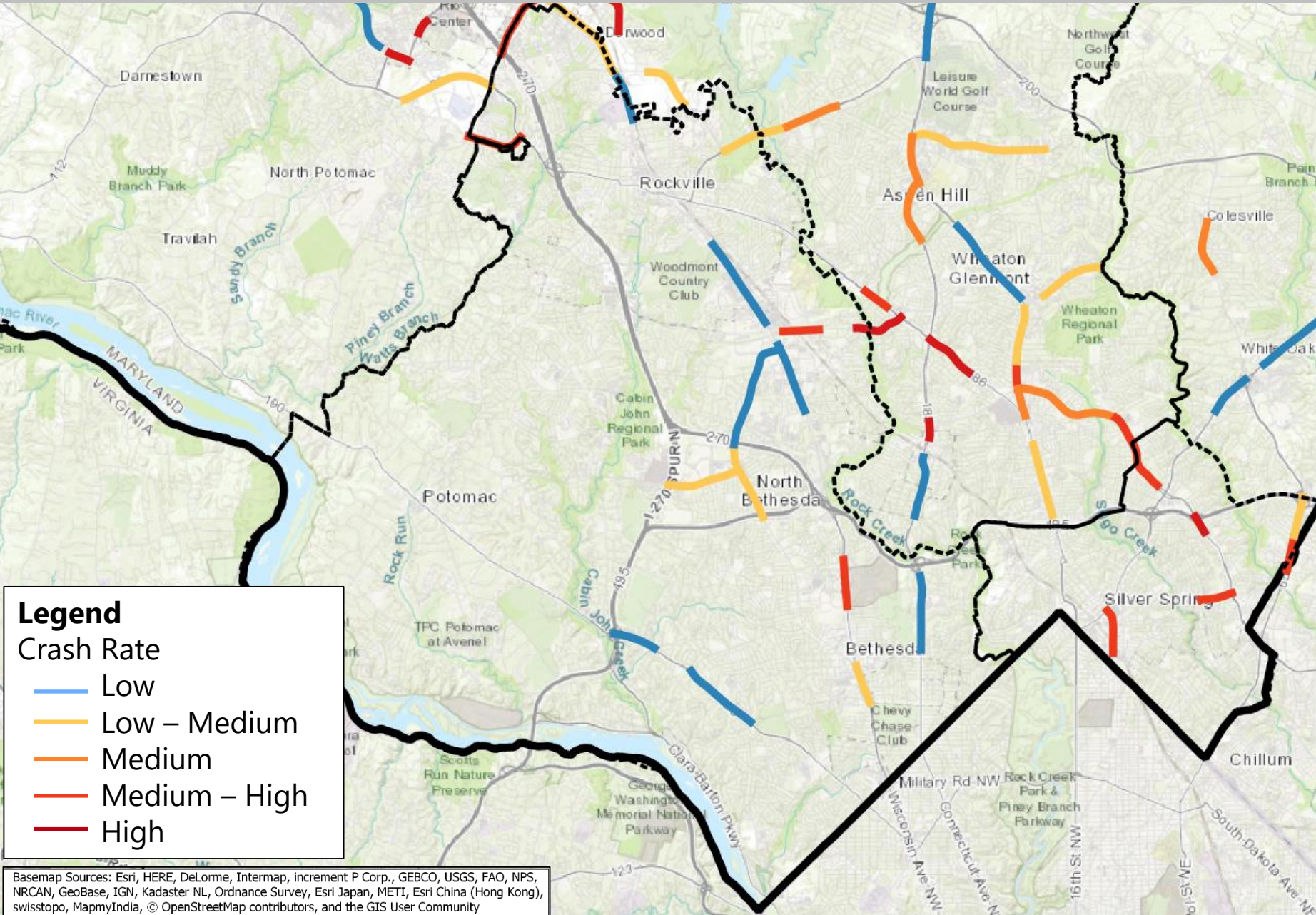
HIGH INJURY NETWORK



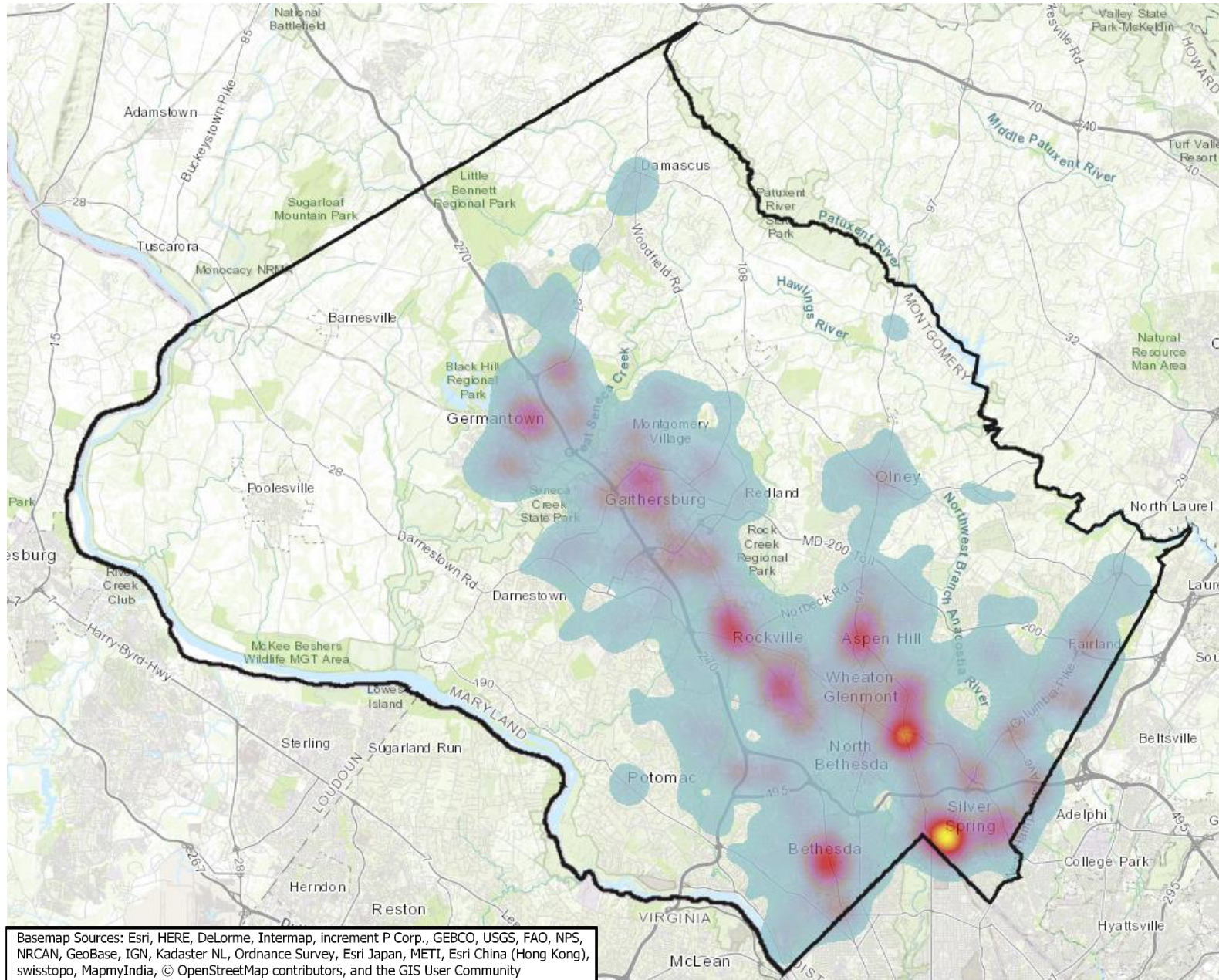
The High Injury Network (HIN) identifies roadway segments that have a higher amount of severe and fatal crashes (at least one crash per mile per year) relative to the amount of traffic on that road. MCDOT used this initial list to identify roadways for engineering improvements.

HIGH INJURY NETWORK IN B-CC

High Injury Network locations within the Bethesda Chevy Chase (B-CC) Regional Service Center area are Wisconsin Ave near the Metro and Medical Center, Connecticut Ave near I-495, Old Georgetown Rd north of I-495, Democracy Blvd between the I-270 spurs, and Rockville Pike from White Flint to Twinbrook.

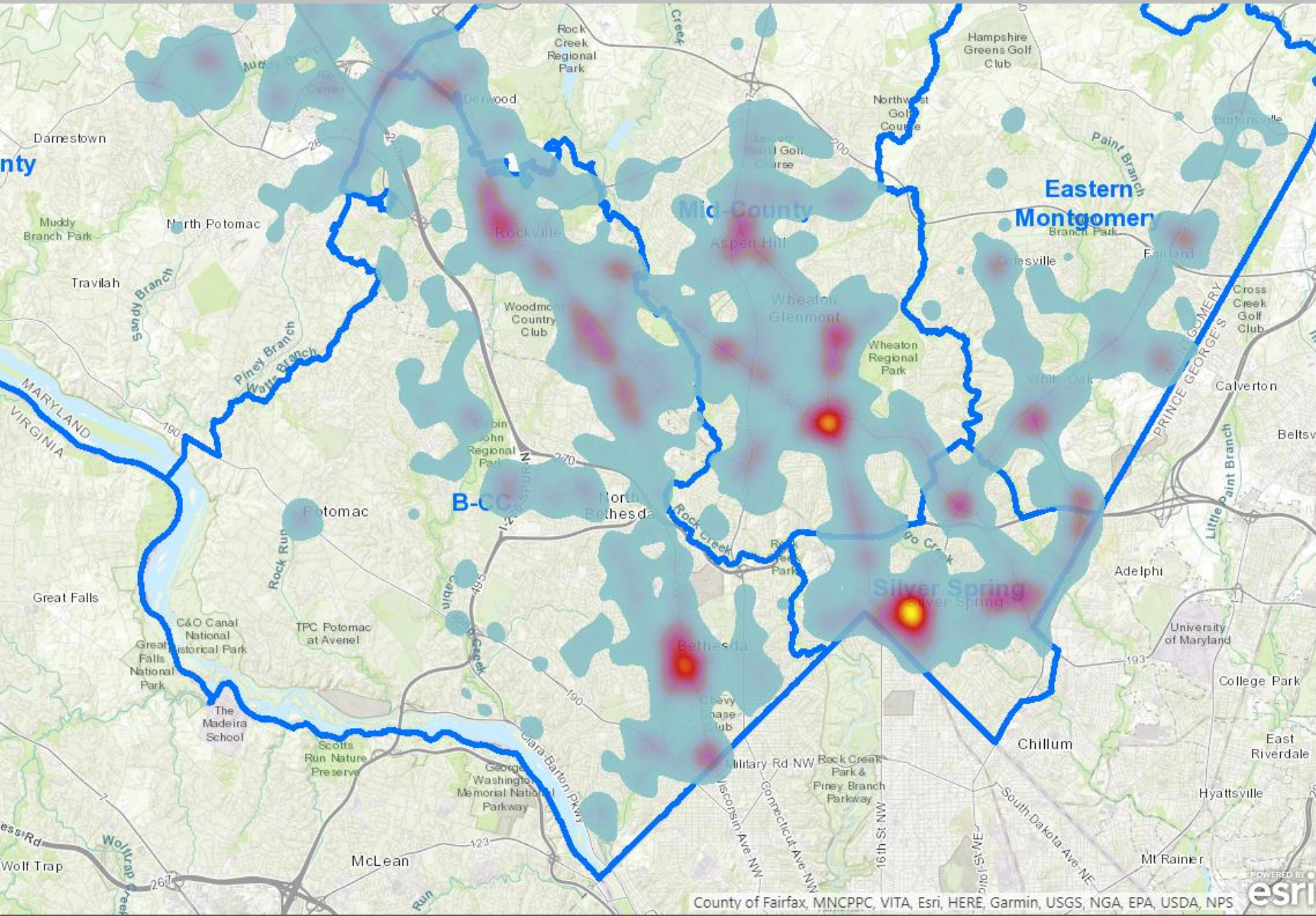


PEDESTRIAN-INVOLVED CRASH HOTSPOTS



The areas with the highest amounts of pedestrian-involved crashes in the county are Silver Spring, Bethesda, Wheaton, and Aspen Hill.

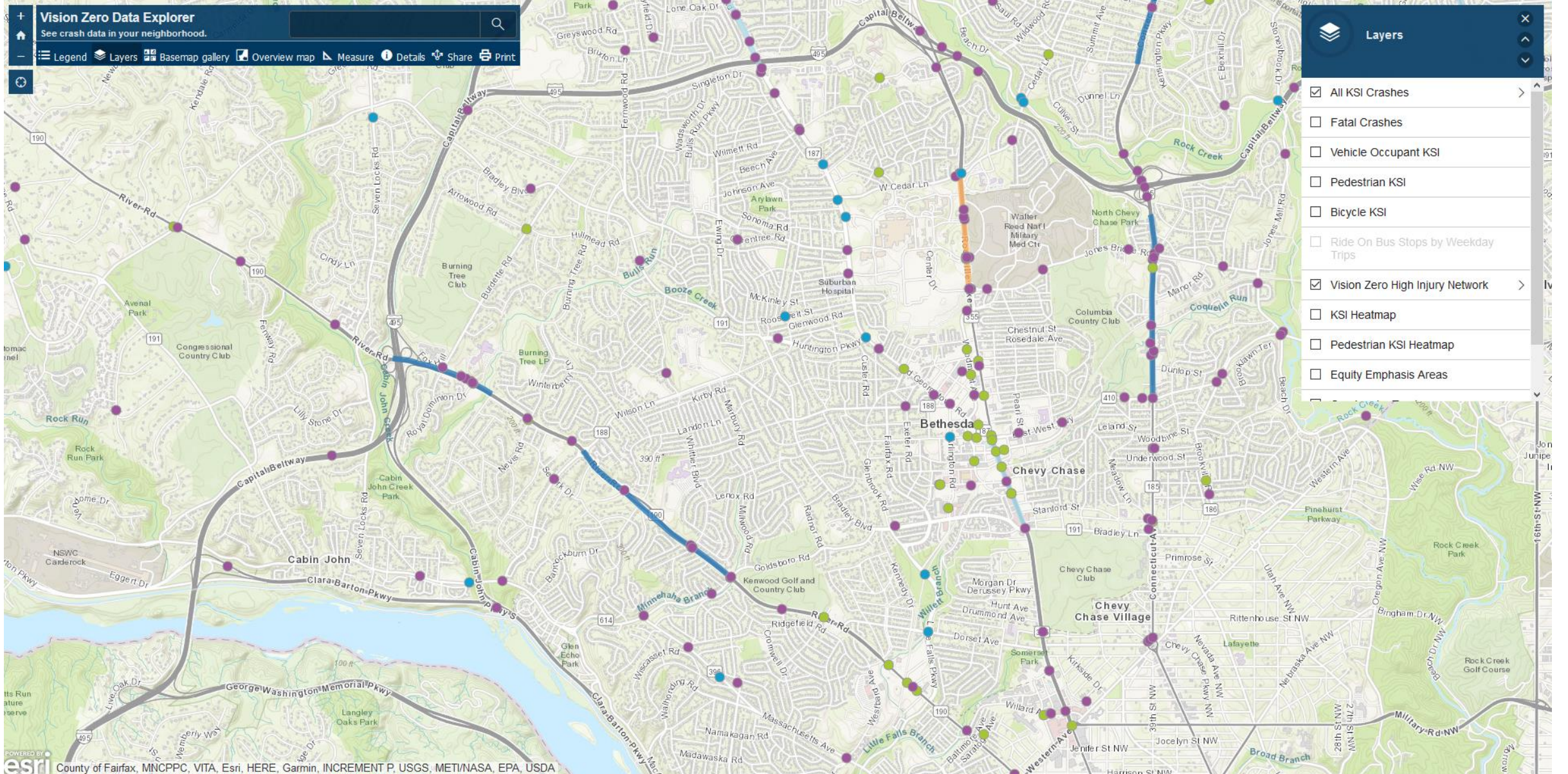
PEDESTRIAN-INVOLVED CRASH HOTSPOTS



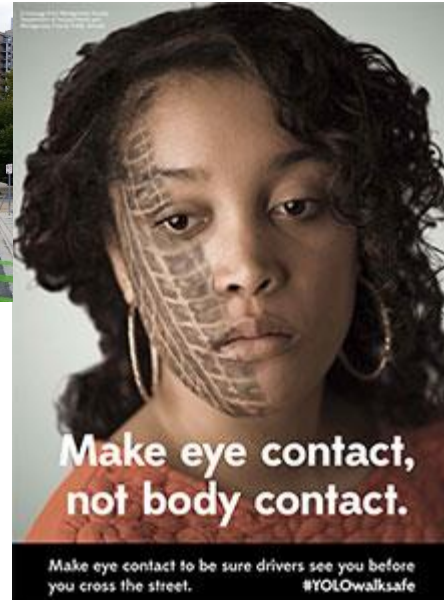
The areas with the highest density of pedestrian-involved crashes in the Bethesda-Chevy Chase Regional Service Center Area are the Bethesda Central Business District (CBD), Rockville Town Center, Rockville Pike between White Flint and Twinbrook, and Montgomery Mall.

The Bethesda CBD averaged 23 pedestrian-involved crashes per year from 2016 to 2018. These crashes were less likely to end in serious or fatal injuries (7%) compared to the Countywide average (14%).

EXPLORE MORE



<https://montgomerycountymd.gov/visionzero/action.html>



VISION ZERO

**NO TRAFFIC DEATHS BY 2030
IN MONTGOMERY COUNTY**

