

DHHS PULSE REPORT

COVID-19 IMPACT AND RECOVERY

October 19, 2022



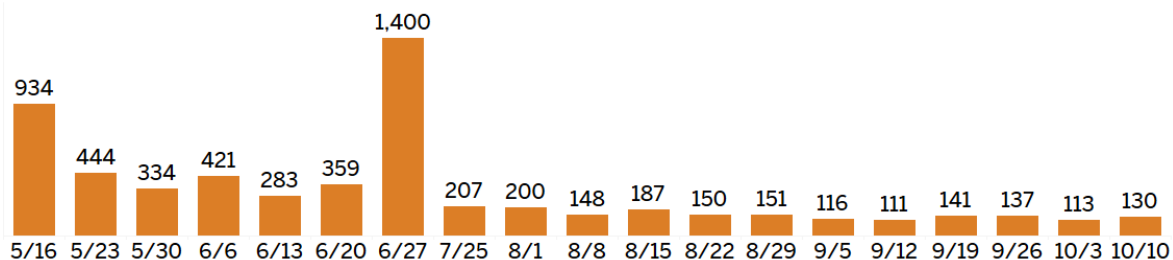
RESPONSE: EMERGENCY ASSISTANCE & DEMAND

COVID-19 RENT RELIEF UPDATE: WEEK OF OCT 10-16

ROUND 4 APPLICATIONS FOR TENANTS BY WEEK

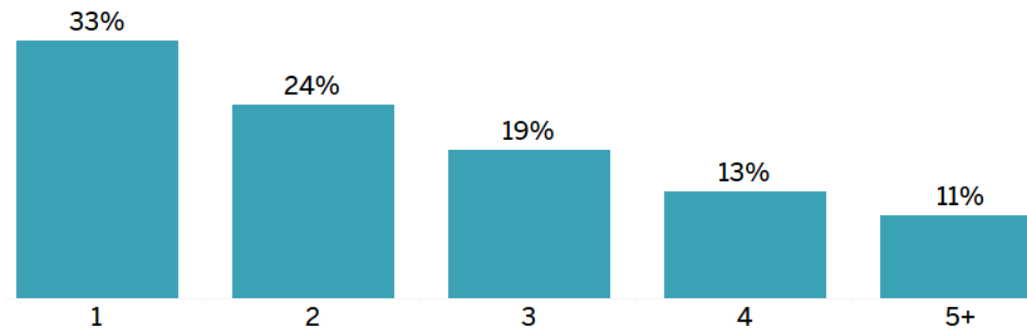
5,966 Households

(Application type: 94% tenant; 6% landlord)

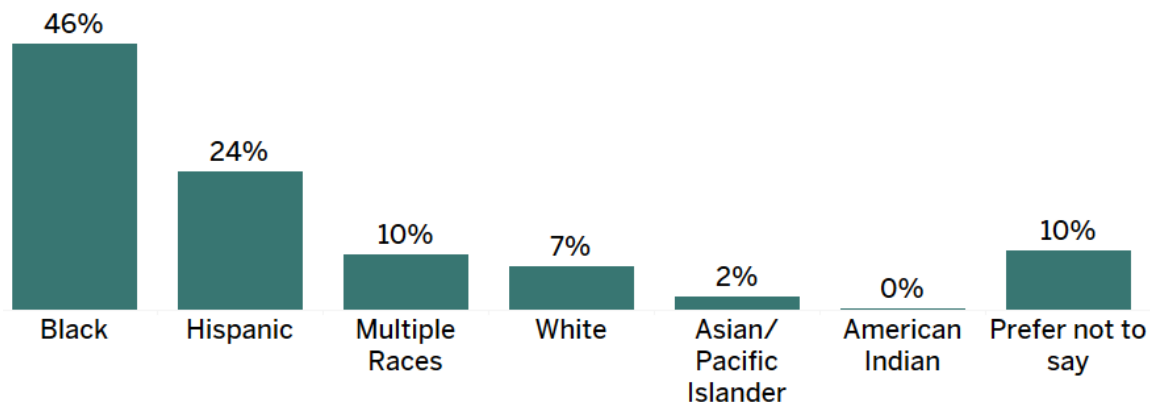


Note: Applications reopened to new users on 7/27. All applications will be reviewed.

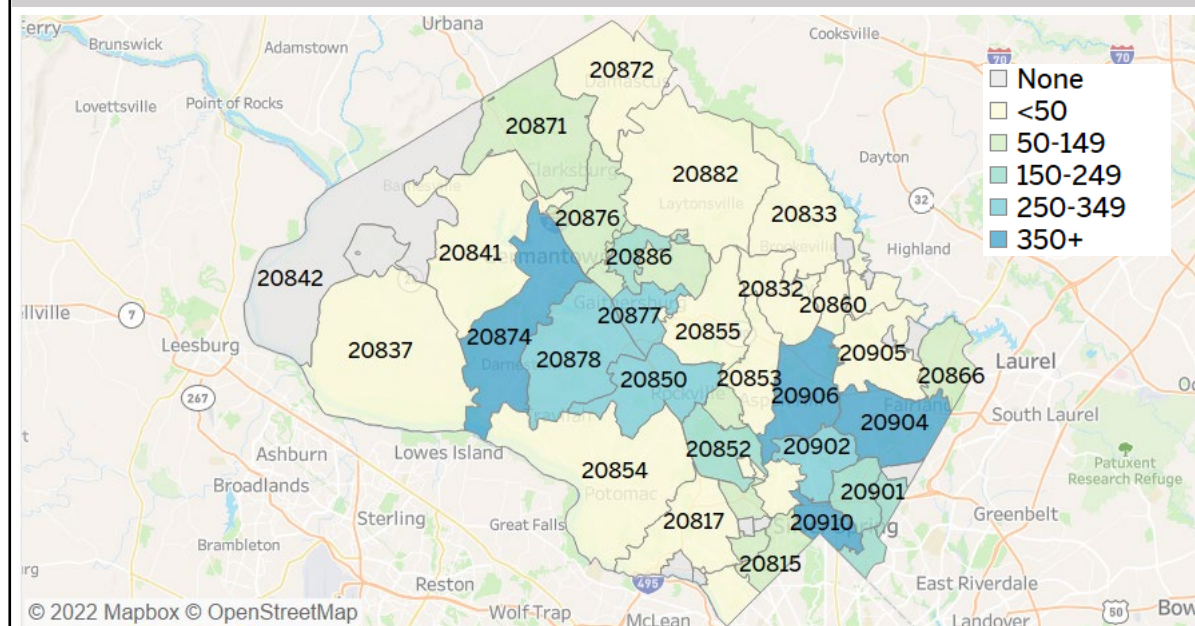
HOUSEHOLD SIZE



TENANT RACE/ETHNICITY

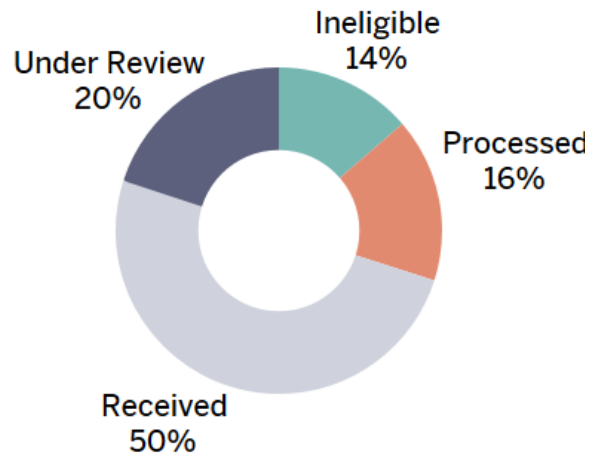


TENANT APPLICANTS BY ZIP CODE



COVID-19 RENT RELIEF UPDATE: WEEK OF OCT 10-16

ROUND 4 APPLICATION STATUS

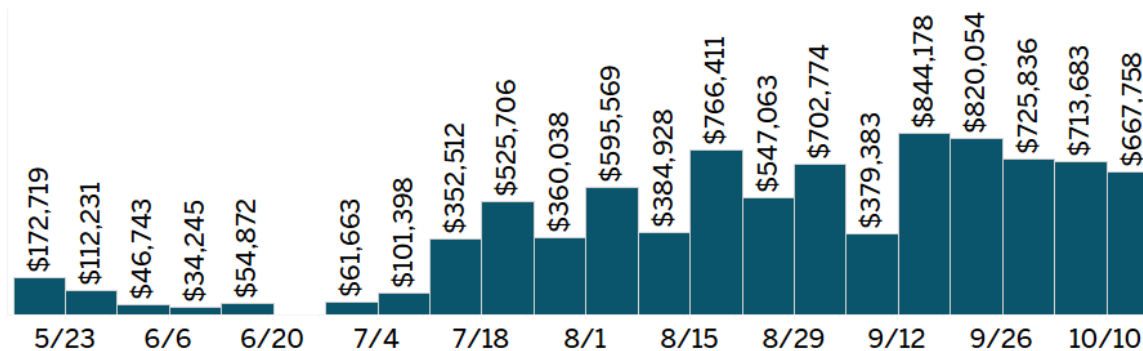


Applications deemed ineligible are typically fraudulent or are from applicants located out of jurisdiction or who are not behind on rent.

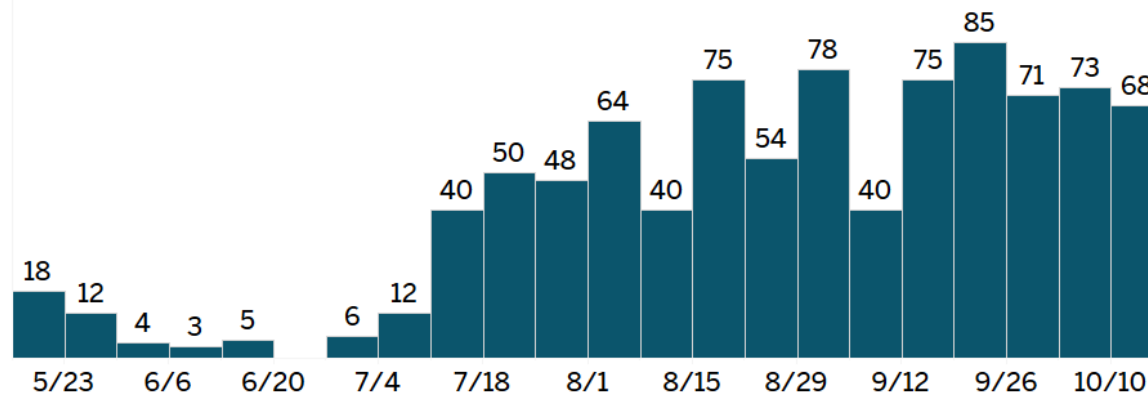
APPROVALS BY WEEK

In total, the COVID-19 Rental Relief Program has approved **\$86.5M** in payments for **11,336** households.

\$8,969,762
approved since May 16



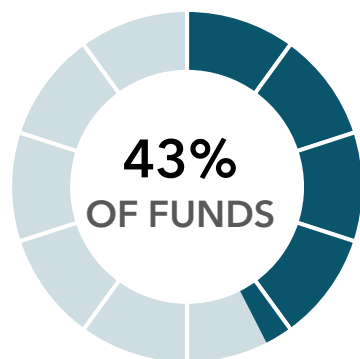
897 Households
approved since May 16



ERAP2 (DIRECT & STATE) EXPENDITURES

Award
\$40.5M

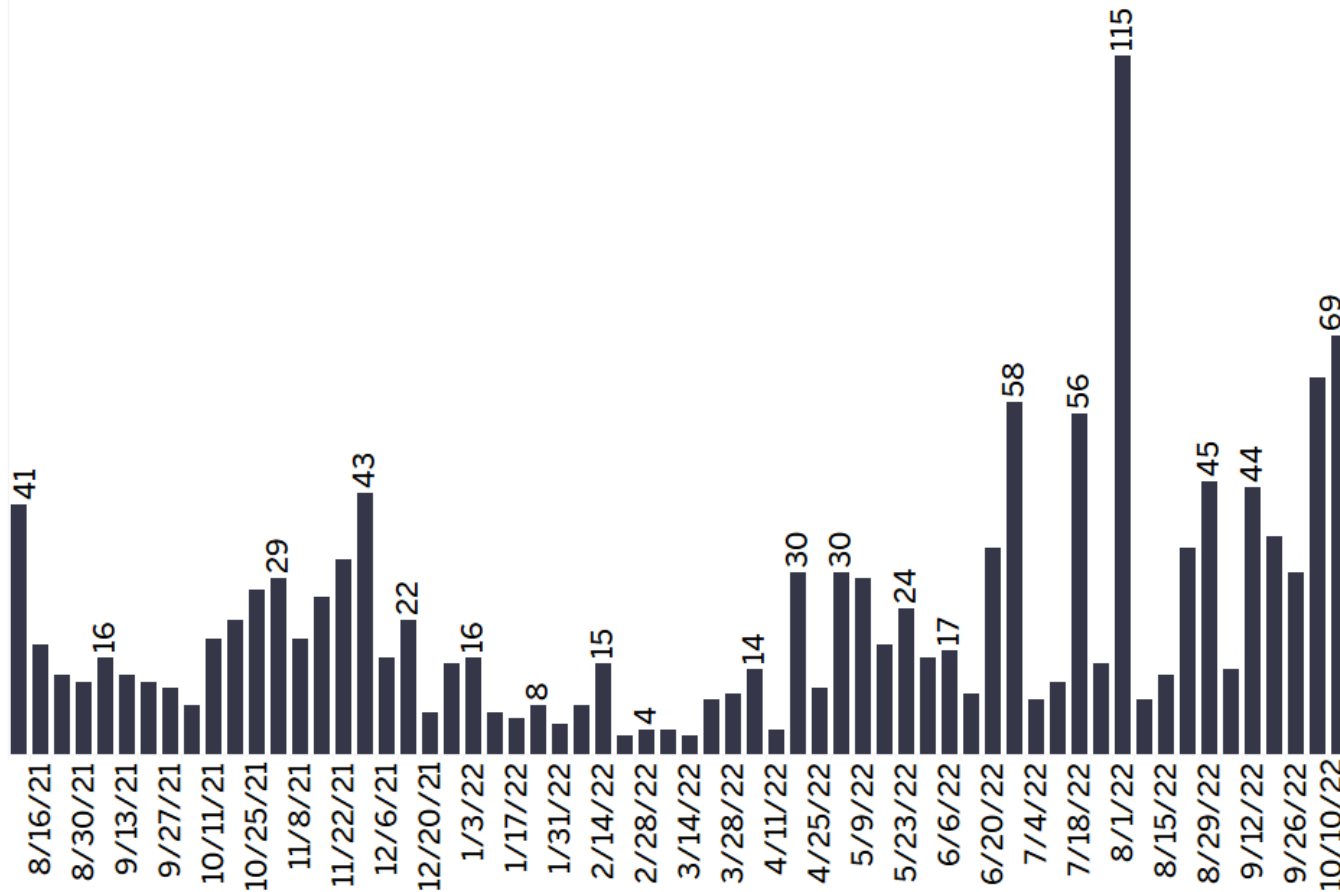
Current spending and encumbered
\$17.2M



Note: Spending and percentages may shift as payments are reconciled.

EVICTIION TRACKER

NEW WRITS BY WEEK

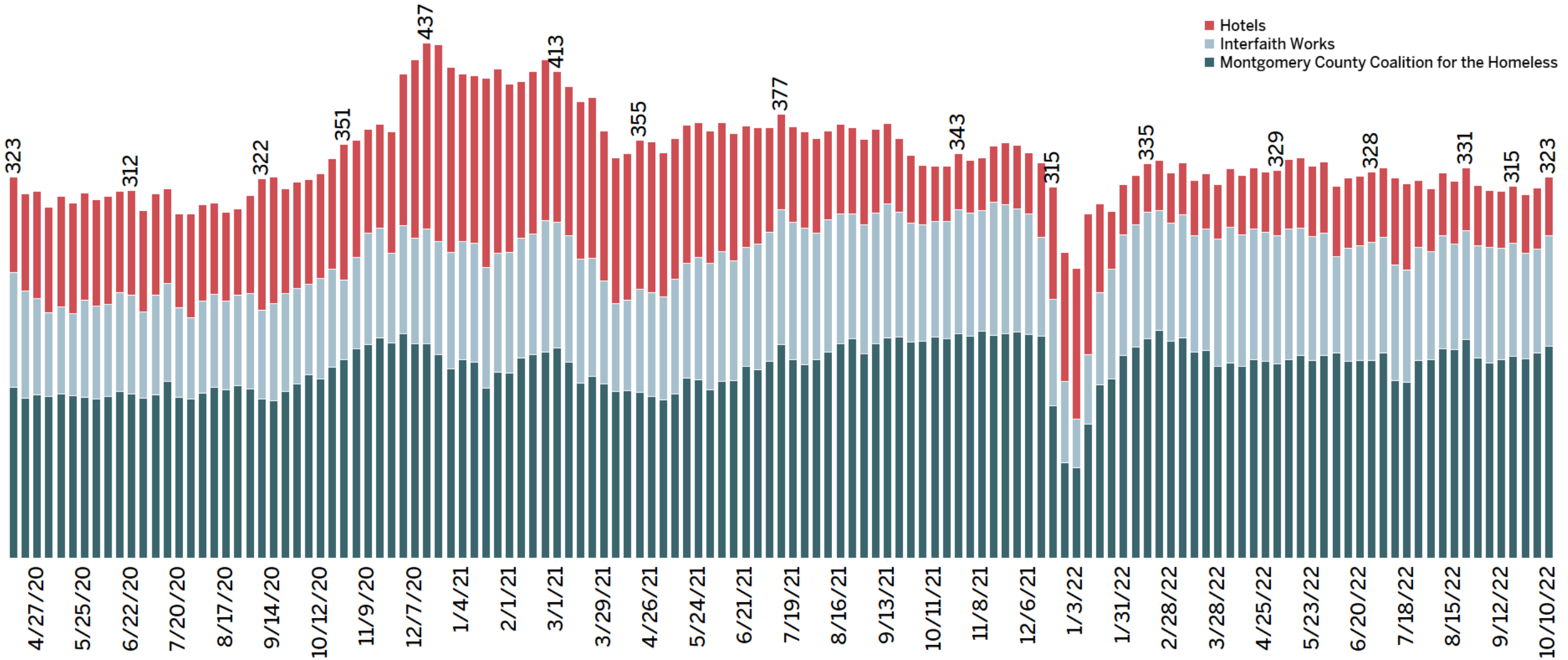


- **1,815** residents scheduled for eviction after July 19, 2021
- **33%** of households with a writ have applied for emergency rental assistance
- Context: **fewer than 8%** of writs typically result in eviction

NOTE: Records on writs for eviction can include commercial tenants as well as multiple notices for a single household. The stats above attempt to capture unique residential households only, but it is not always possible to make such distinctions.

SHELTER OCCUPANCY

Average Daily Shelter Occupancy by Week

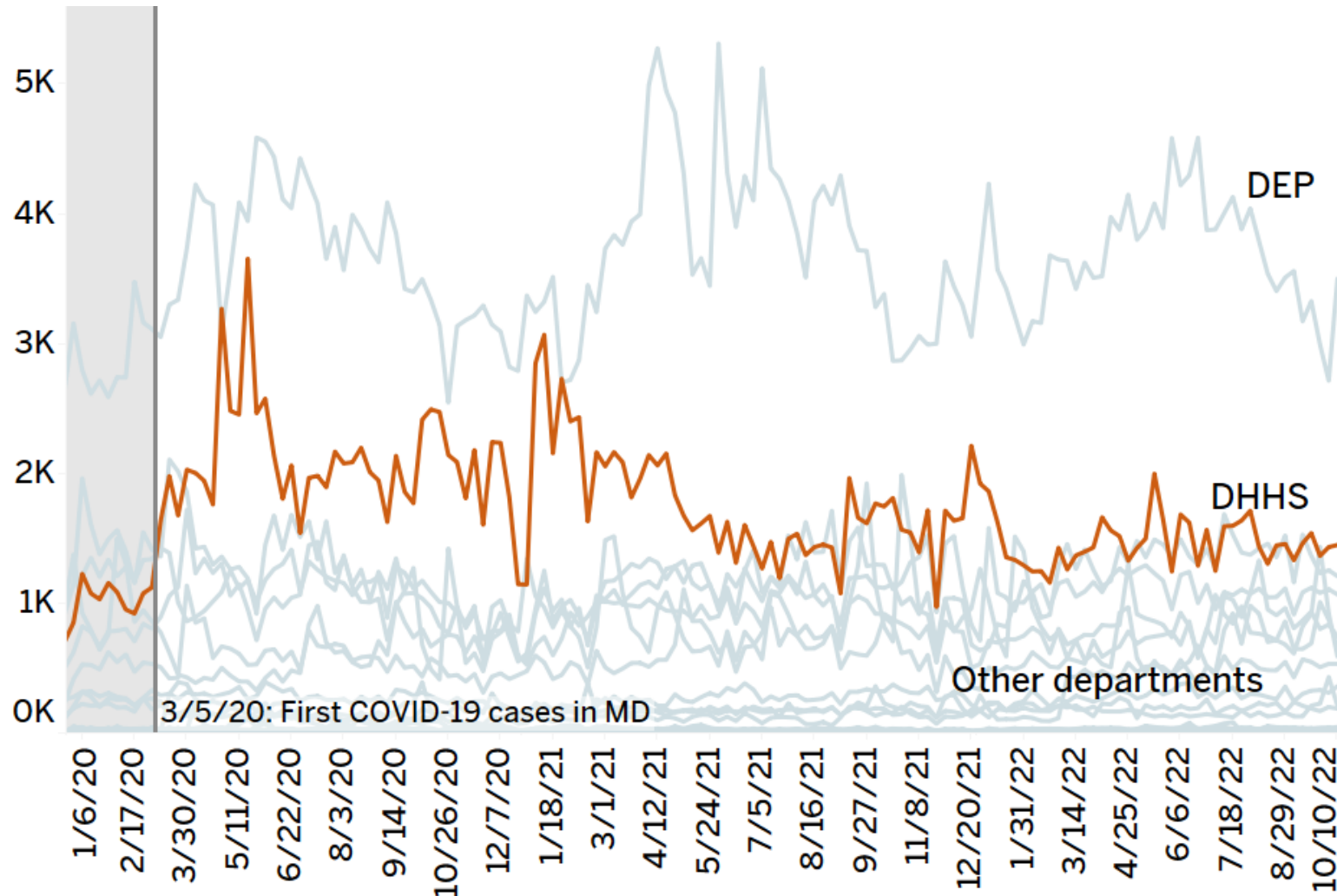


NOTE: Up to March 7, total occupancy did not include MCCH-affiliated hotels providing shelter to those who are in quarantine or isolation.

MC311 WEEKLY CALL VOLUME: DHHS

WEEKLY CALLS BY DEPARTMENT

1,448 calls last week for DHHS services



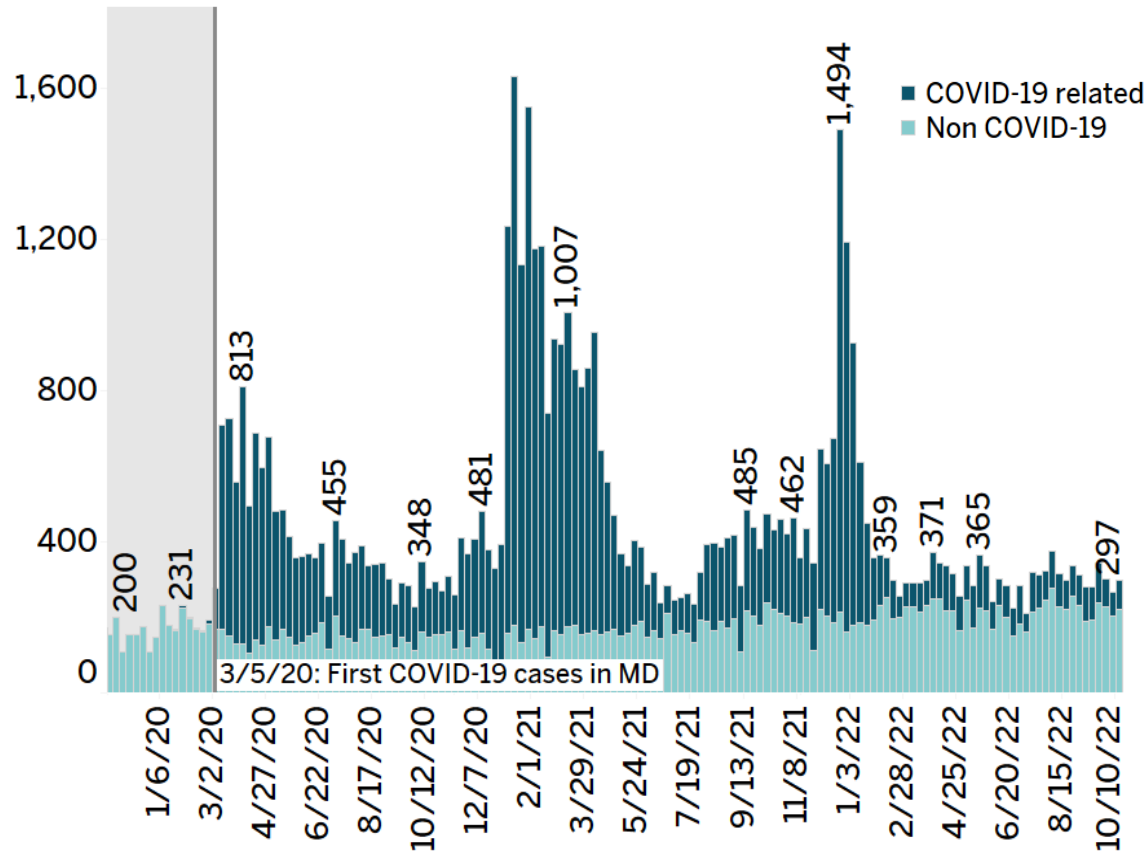
- 36% of last week's DHHS service calls were regarding public assistance programs
 - Most questions regarding public assistance are referred to the Office of Eligibility and Support Services, which typically fields around 2,000 direct calls and 3,000 referrals from MC311
- 13% of DHHS calls to MC311 last week were about the COVID Rental Relief Program

MC311 WEEKLY CALL VOLUME: DHHS

PUBLIC HEALTH

297 calls last week for Public Health

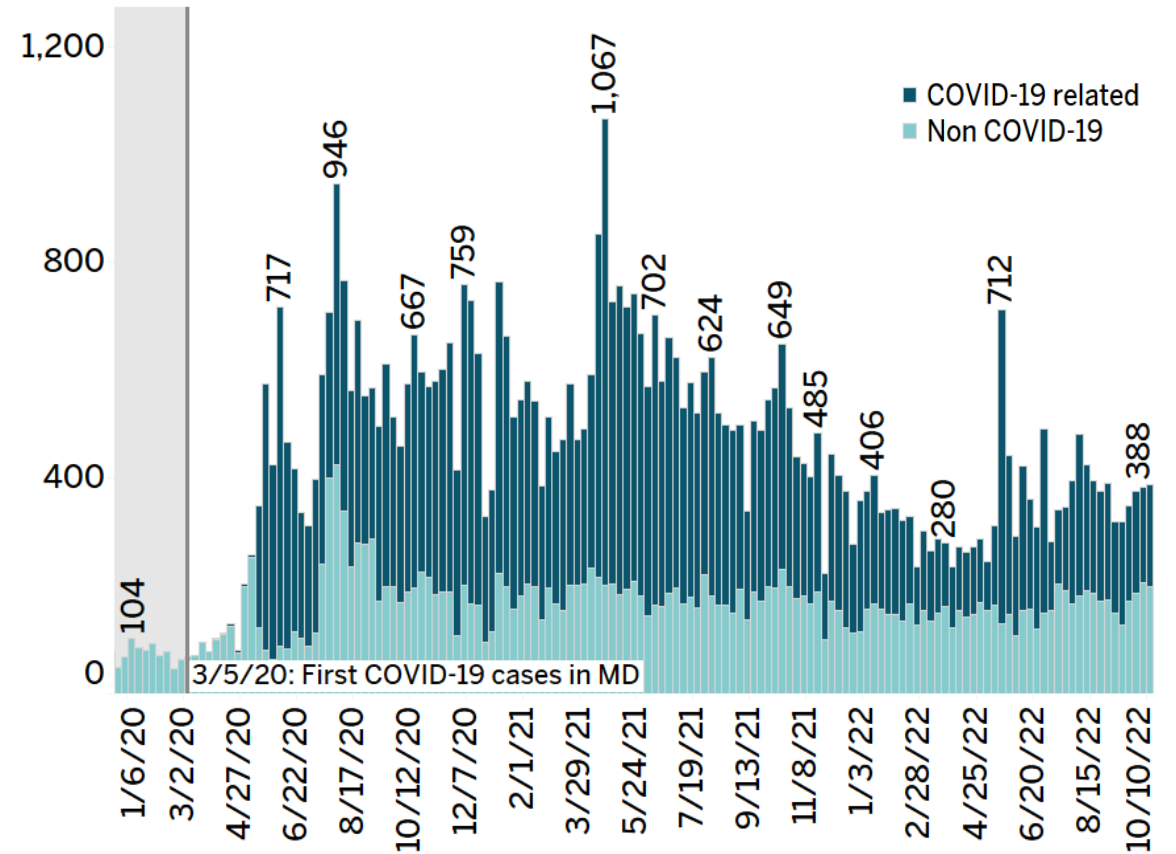
26% related to COVID-19



SERVICES TO END & PREVENT HOMELESSNESS

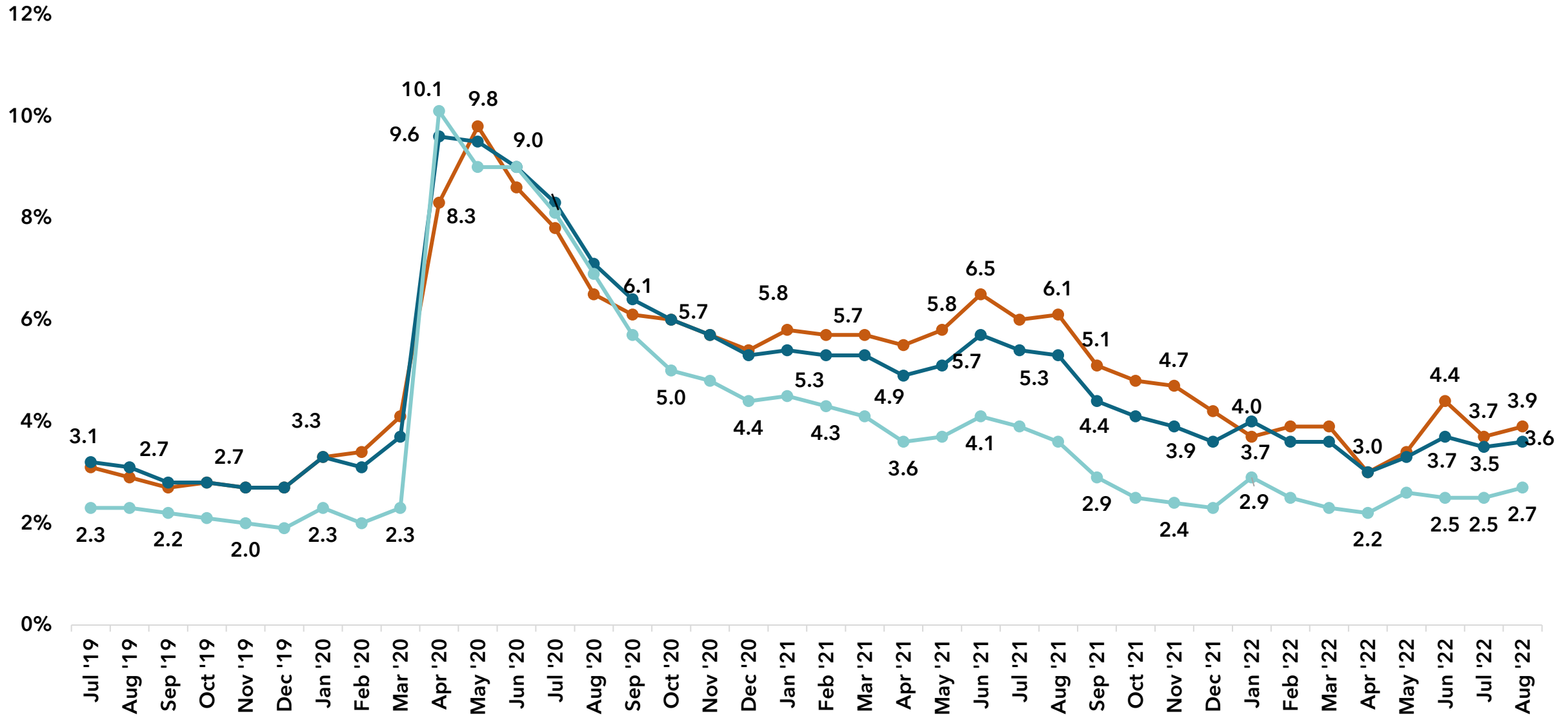
388 calls last week for SEPH

49% related to COVID-19



UNEMPLOYMENT RATES IN THE REGION

—●— Montgomery County —●— DC-Metro Region —●— Fairfax County



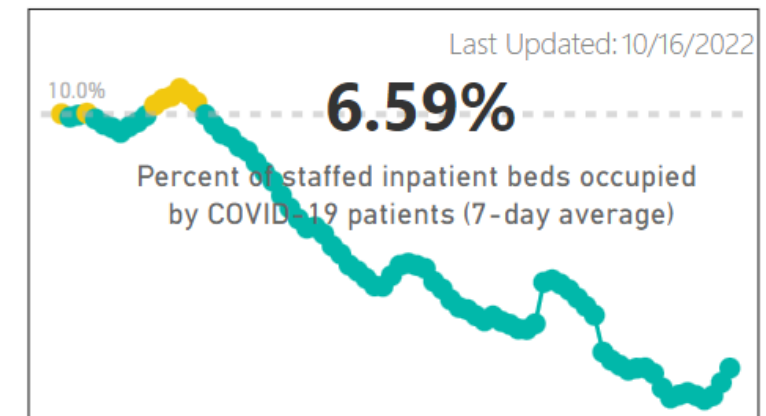
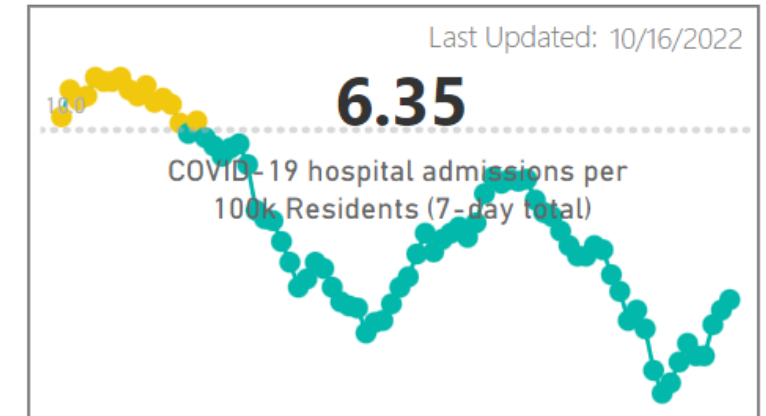
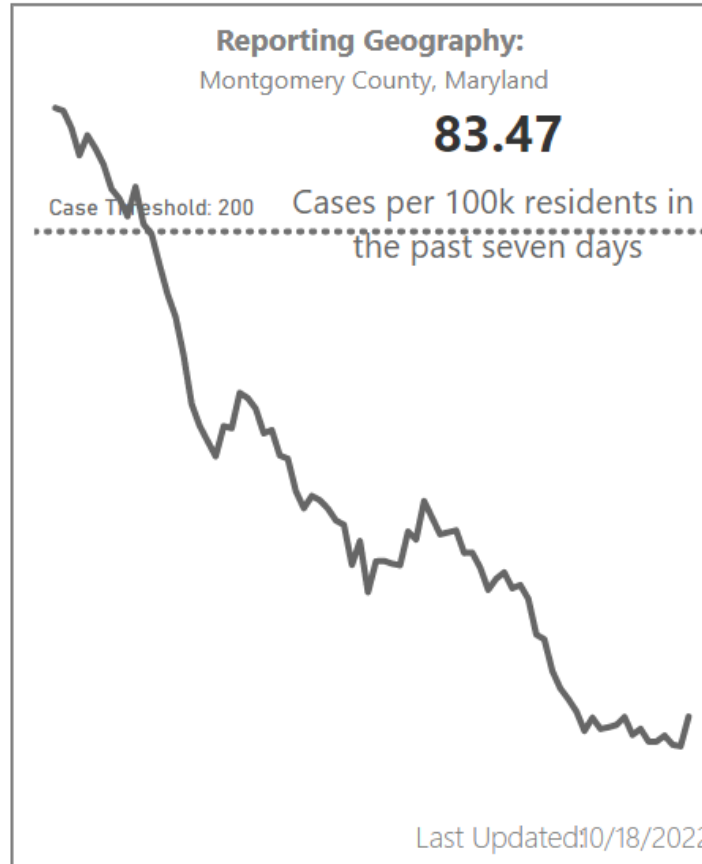
COVID-19 CASES, VACCINATIONS, & TESTING



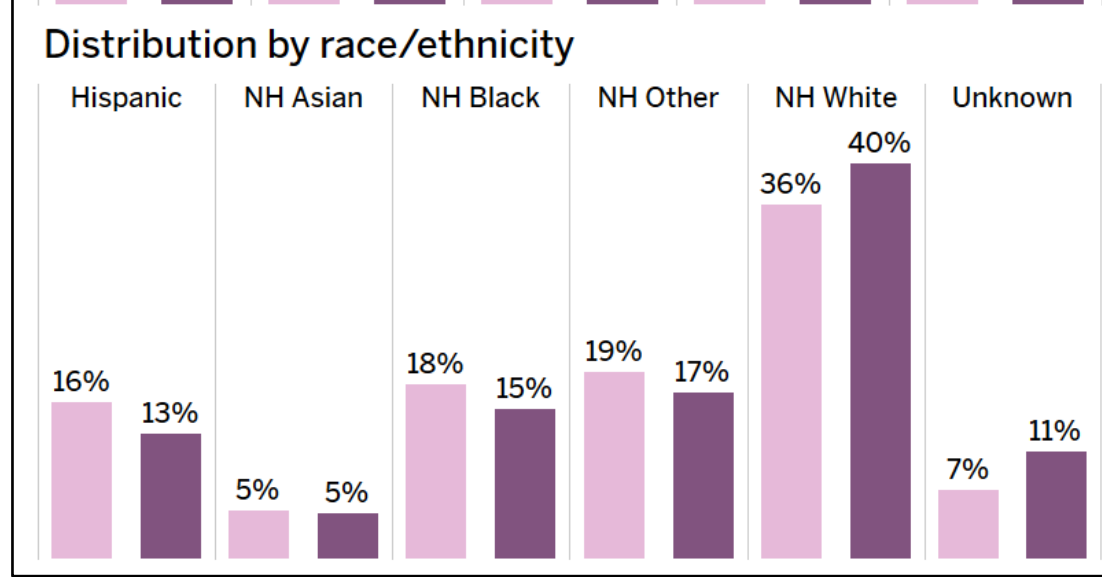
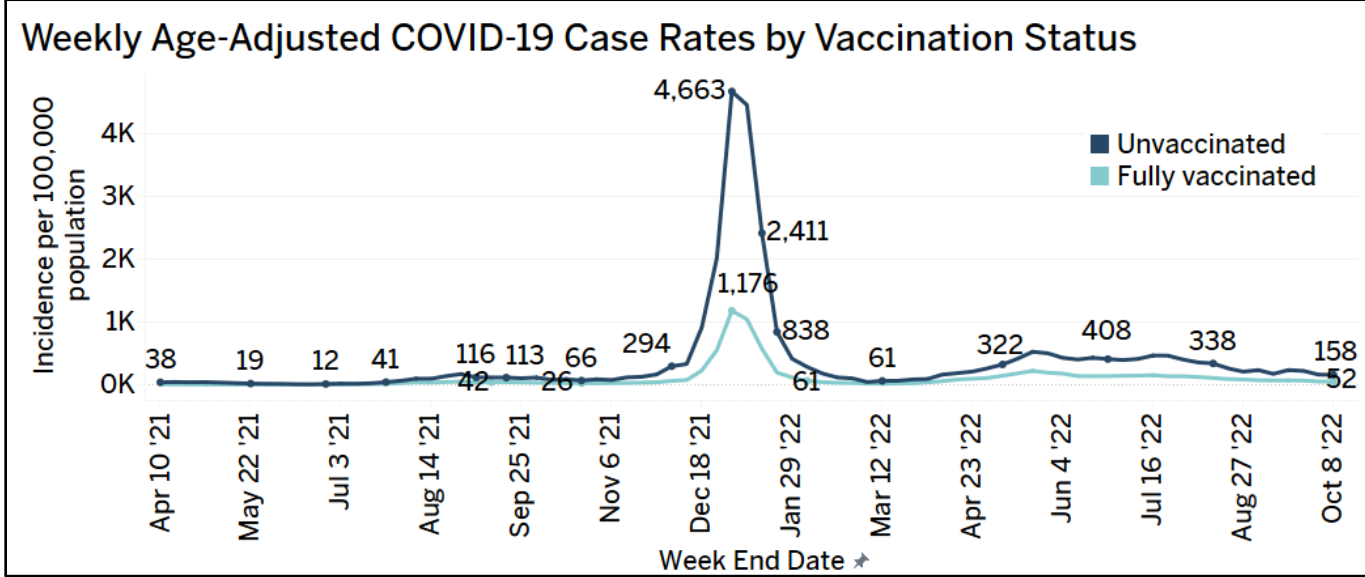
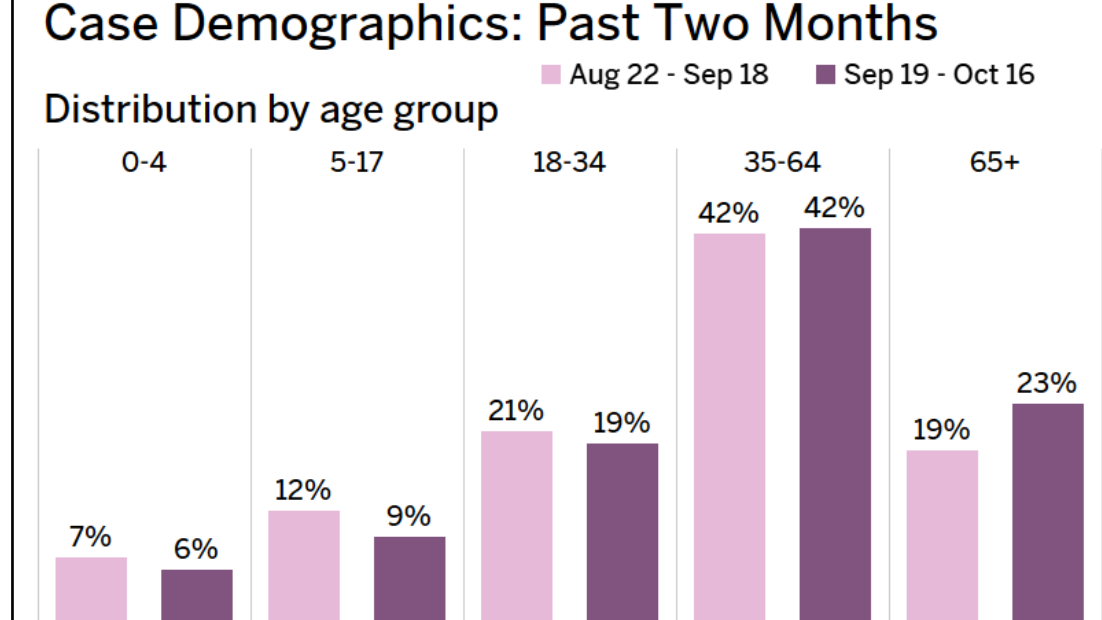
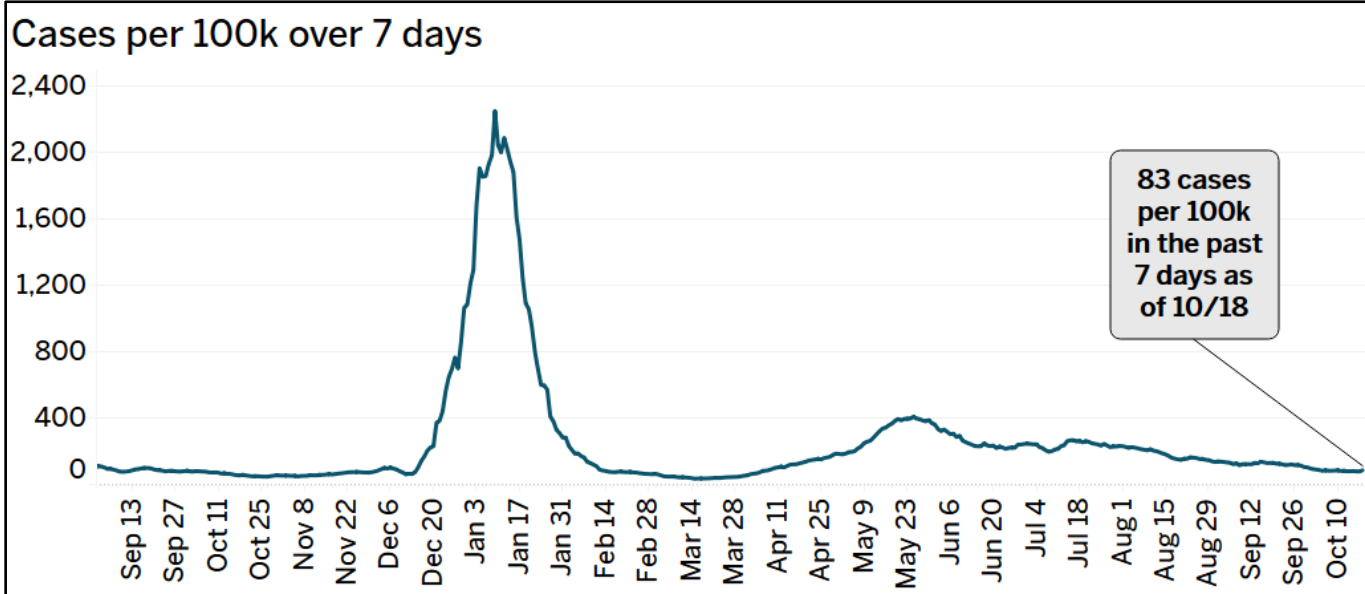
COVID-19 COMMUNITY LEVEL STATUS

Based on CDC's community level indicators, Montgomery County's community level status is **LOW**.

- Fewer than 200 cases per 100k in the past seven days
- Fewer than 10 new COVID-19 admissions per 100k in the past seven days
- Less than 10% of staffed inpatient beds occupied by COVID-19 patients on average in the past seven days



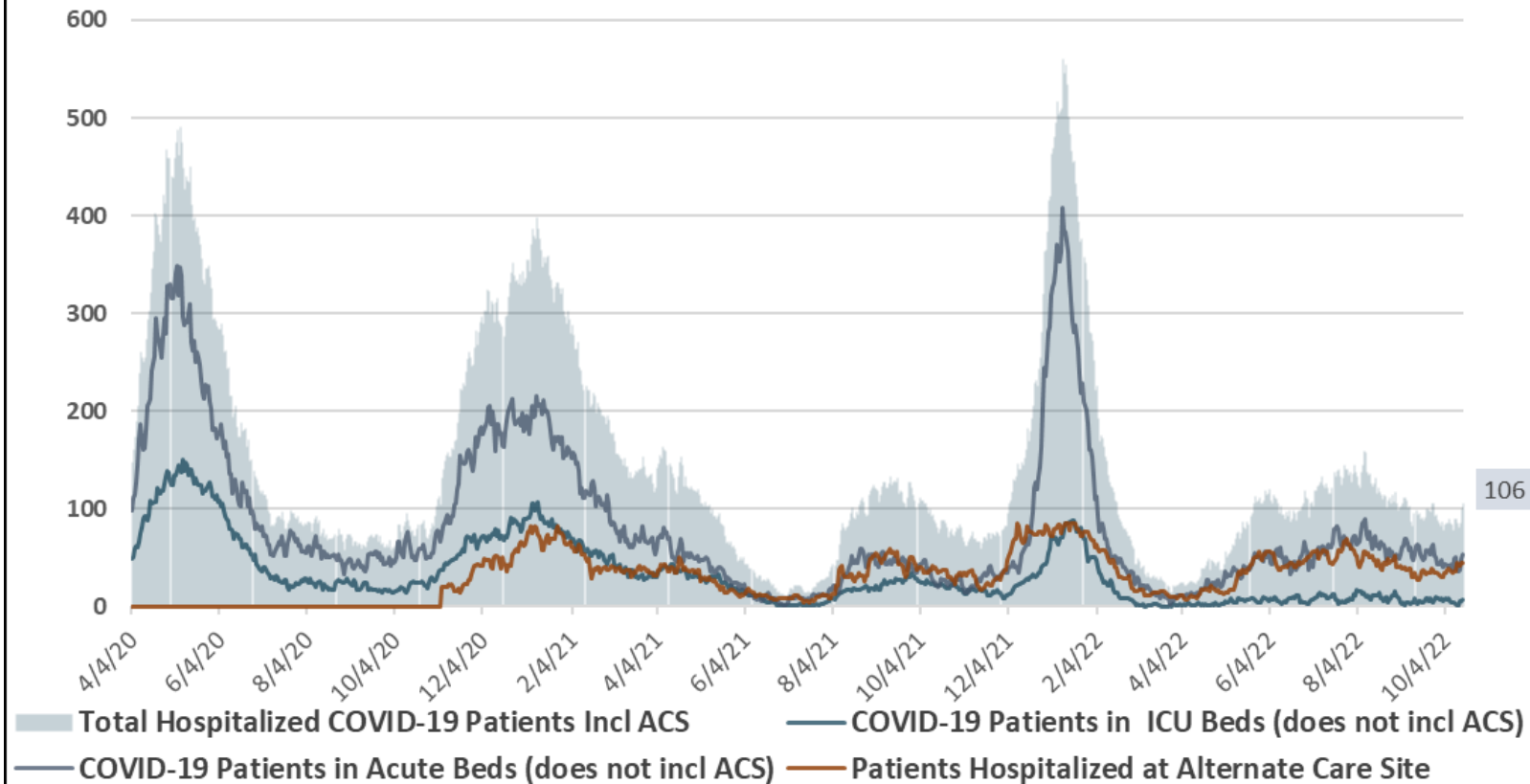
COVID-19 CASES



Note: Case data only reflect confirmed cases via PCR tests.

COVID-19 HOSPITALIZATIONS

Total ICU and Acute Beds Occupied by COVID-19 Positive Patients
(Montgomery County Hospitals and the WAH Alternate Care Site) as of 1 pm 10/16/22

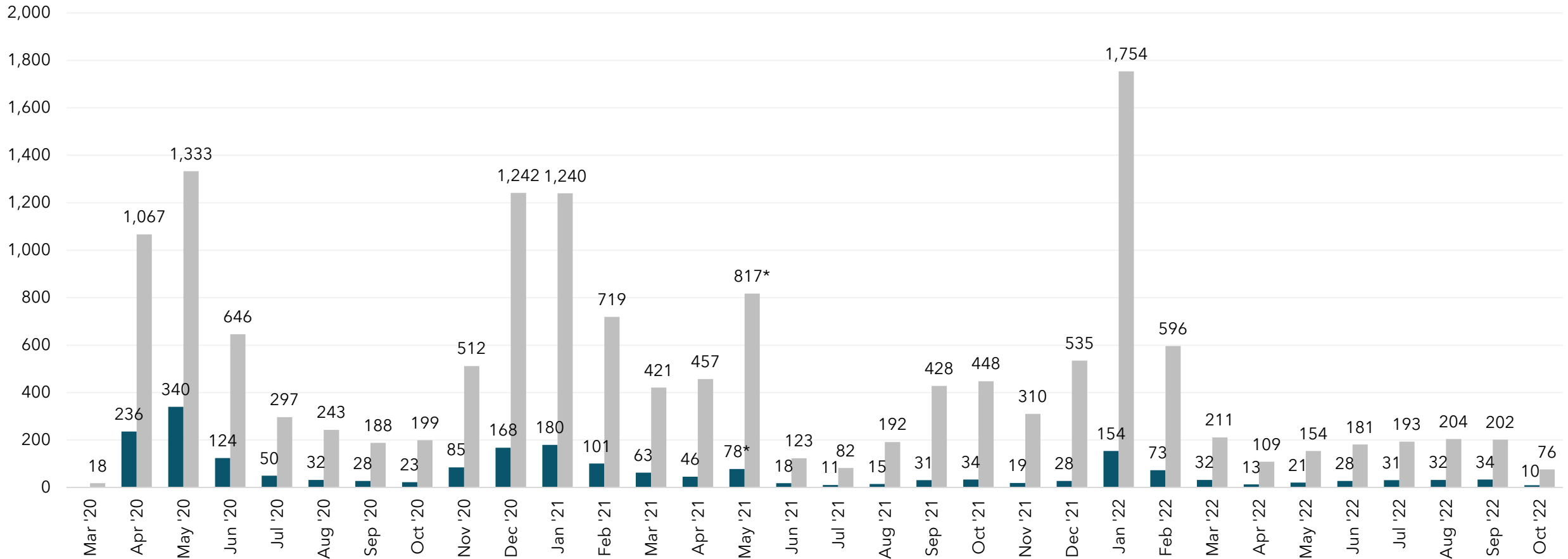


- There are 106 hospitalized COVID-19 patients as of 10/16. Acute care occupancy (54) and ICU bed occupancy (7) increased from the week prior (+16 and +2, respectively).
- 6.59% of hospital beds in the community are occupied by patients with a COVID diagnosis (as of 10/16).
- 45 patients are currently hospitalized at the alternate care site, an increase of 10 since last week. These patients are transfers from other hospitals and may come from other jurisdictions.

COVID-19 DEATHS

Monthly COVID-19 Deaths
As of 10/15/22

■ Montgomery County ■ Maryland

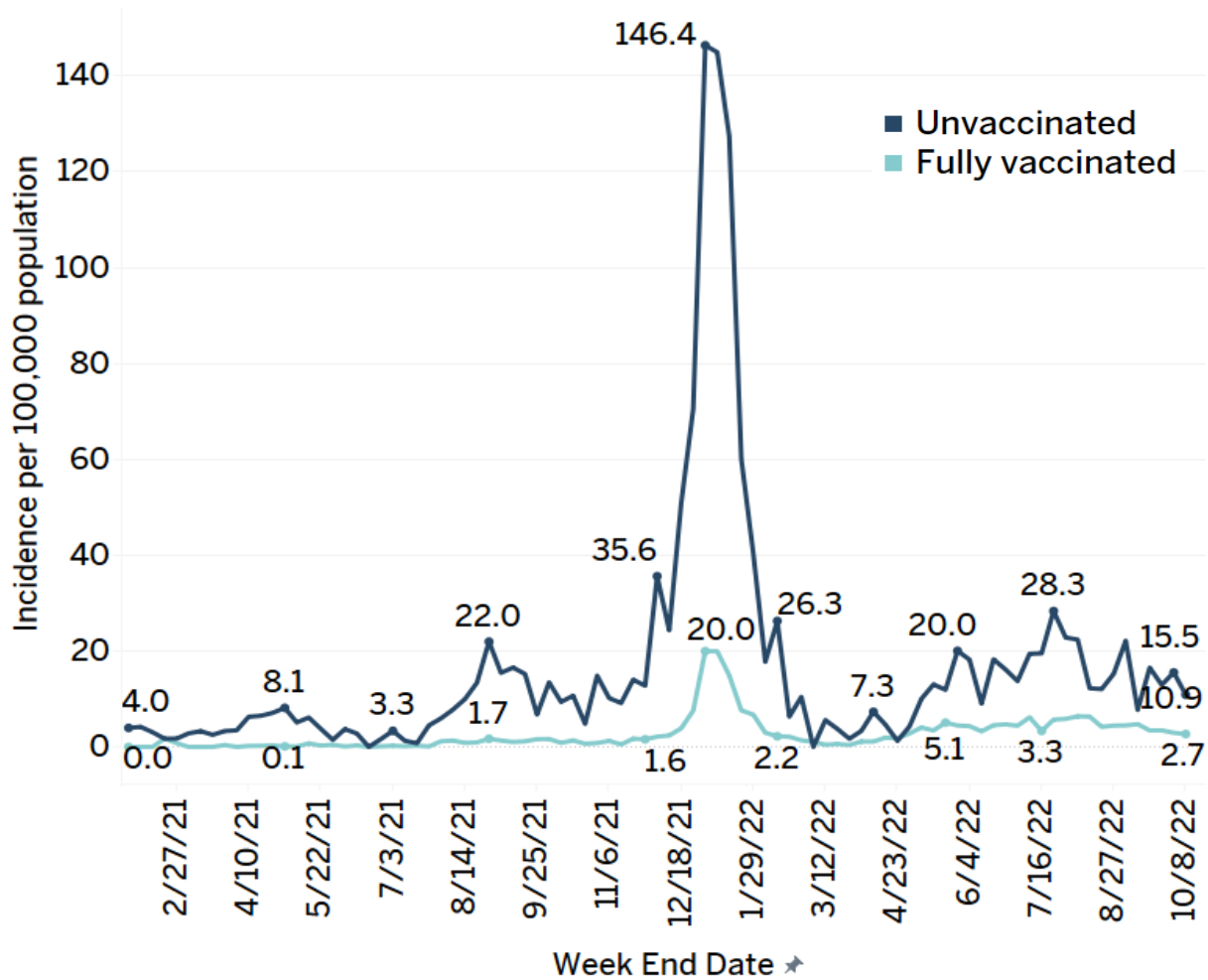


*VSA revised death data on May 27, 2021 to include COVID-19 deaths not previously counted.

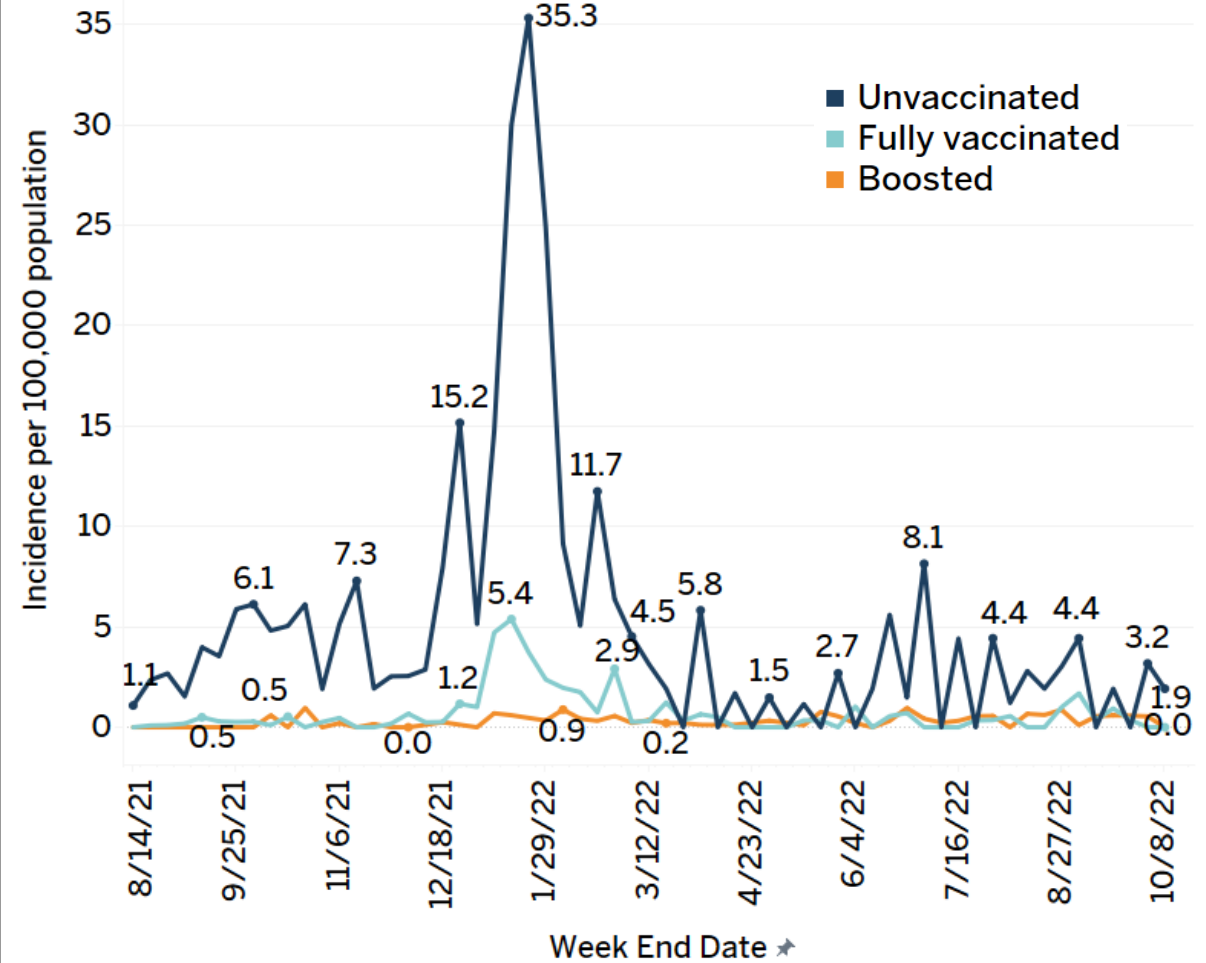
NOTE: Monthly totals are based on the date death was reported, which may not be the same as the date on which the death occurred.

HOSPITALIZATIONS & DEATHS BY VACCINATION STATUS

Weekly Age-Adjusted COVID-19 Hospitalization Rates by Vaccination Status
Montgomery County, MD



Weekly Age-Adjusted COVID-19 Death Rates by Vaccination Status
Montgomery County, MD



NOTE: Hospitalization rates for the boosted population are not available as a separate measure.

COVID-19 VACCINATIONS: TOTALS FROM CDC

TOTAL VACCINATIONS (AS OF 10/12/22)

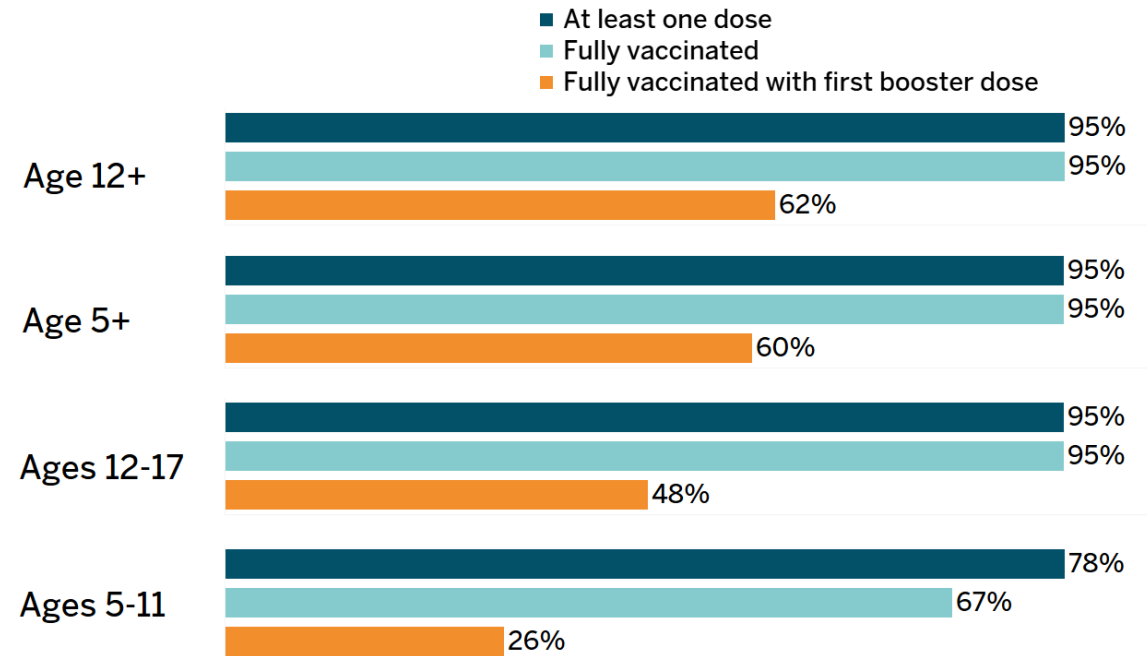
- **≥95%*** of total population received at least **ONE DOSE** [N=1,127,082]
- **91%** of total population received at least **TWO DOSES** (fully vaccinated) [N=956,945]
- **59%** of fully vaccinated population received a **FIRST BOOSTER/ADDITIONAL DOSE** [N=566,854]

*The CDC caps percentages at 95% to account for margins of error in data entry and population estimates.

NOTE: On 4/15/22, Maryland made updates to previously submitted data to the CDC that resulted in a decrease of 50,176 doses administered. Some percentages may have decreased as a result.

NOTE: The CDC vaccination count includes Montgomery County residents who received their shots in Maryland or outside the state. It also includes vaccinations administered in some federal entities within Montgomery County.

VACCINATIONS BY AGE GROUP



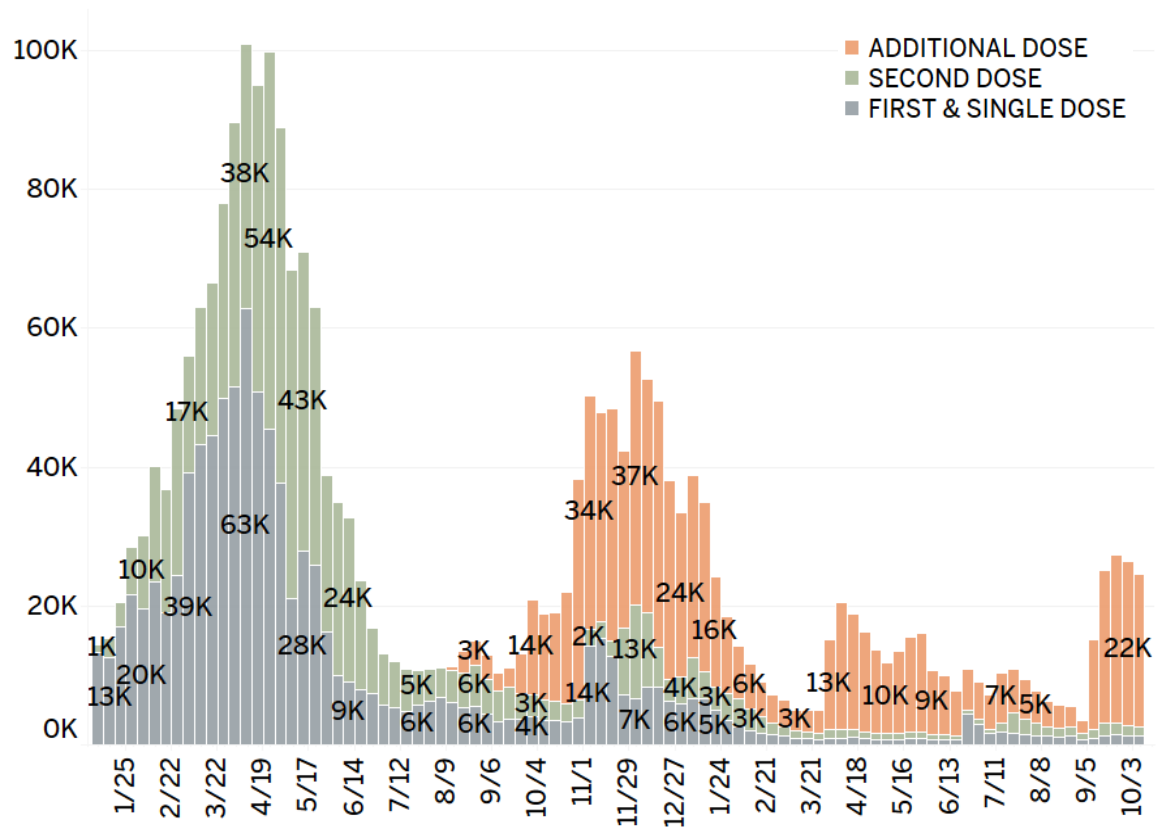
Percentage estimates for age groups 12-17 and 5-11 should be interpreted with caution due to higher margins of error in census population estimates.

- **81%** of the fully vaccinated 65+ population received a **FIRST BOOSTER/ADDITIONAL DOSE** [N=143,264]
- **57%** of the 50+ population with a first booster dose received a **SECOND BOOSTER** [N=164,186]

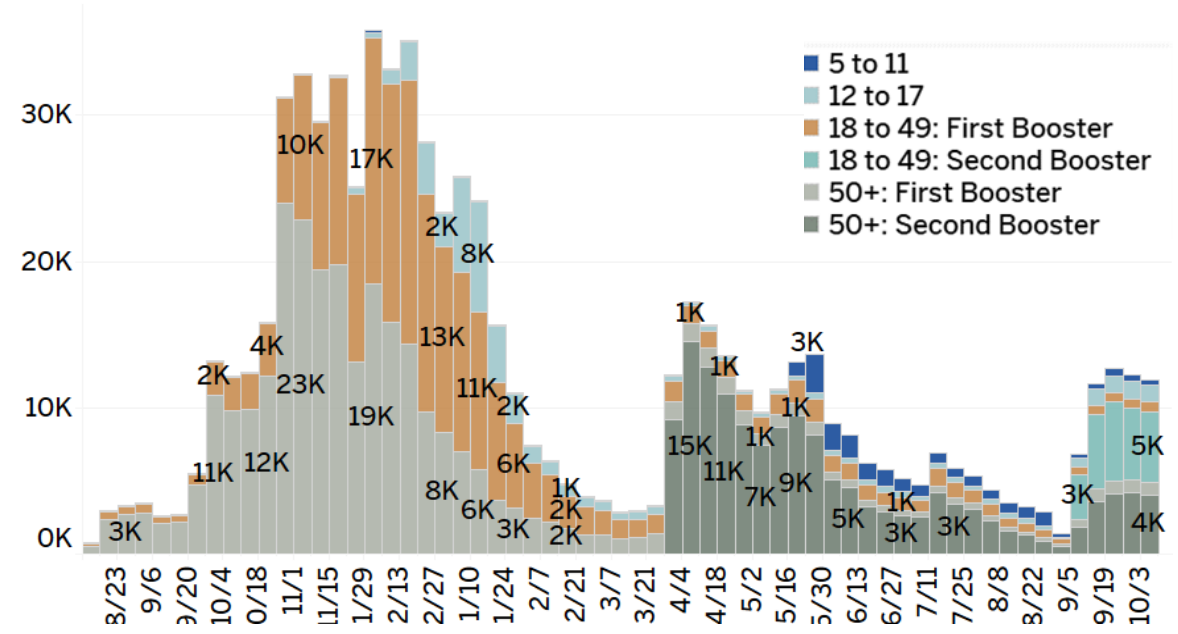
COVID-19 VACCINATIONS: WEEKLY VOLUME

Charts below show most recent full weeks of data, up to **October 9, 2022**.

VACCINATIONS BY DOSE



ADDITIONAL DOSES BY AGE GROUP

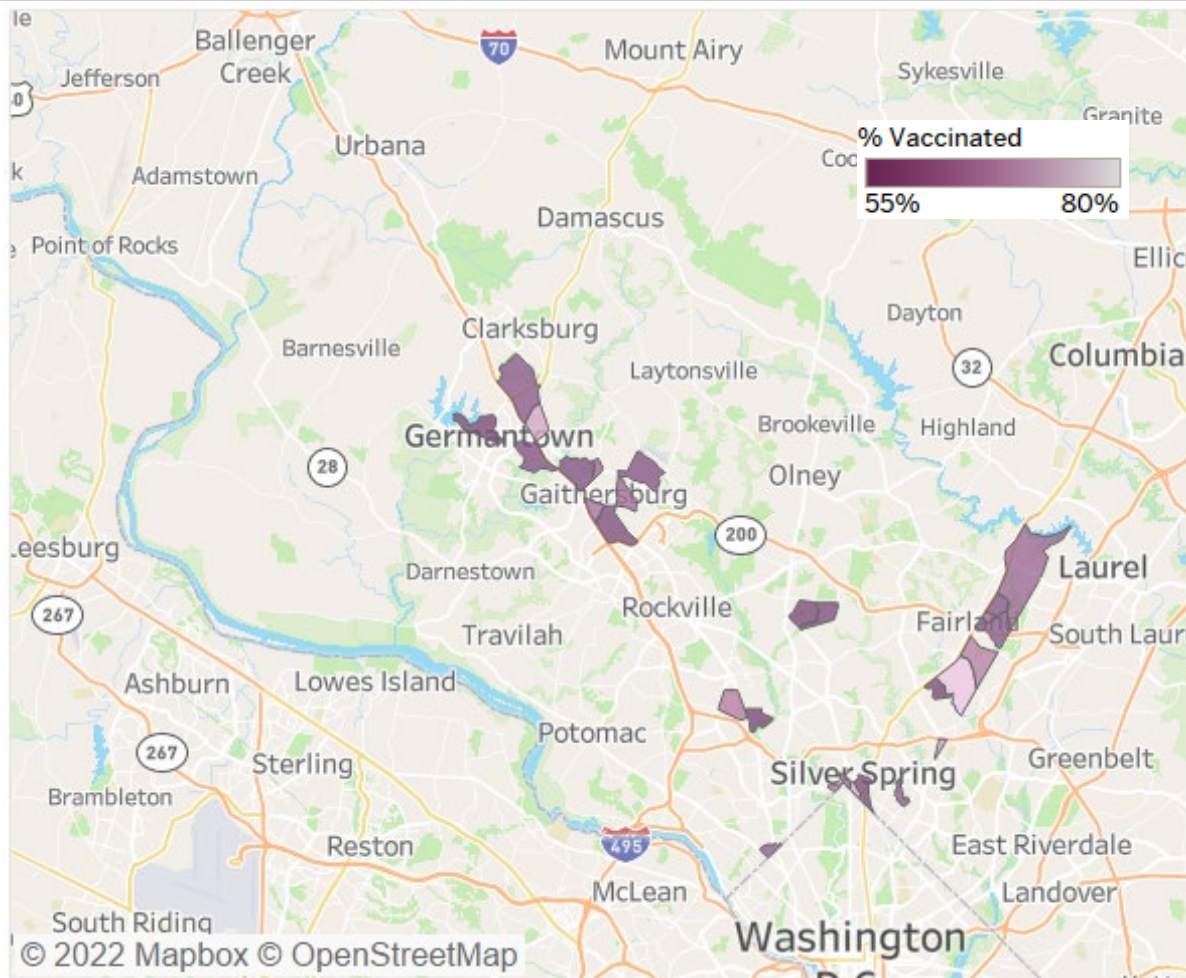


A first booster is defined as the third in a series of two Pfizer or Moderna doses, or the second if recipient received J&J as first dose. A second booster is defined as either the third or fourth dose, depending on whether recipient received J&J as initial dose. Doses are counted without regard to date. Total counts are estimations and imprecise due to entry errors and missing doses for Marylanders who received any of their doses out of state.

Unlike the CDC vaccination data, data from Maryland Health Department only include Montgomery County residents who were vaccinated in Maryland. Totals do not include vaccinations administered at federal entities within the county to non-residents.

COVID-19 VACCINATIONS: GAPS

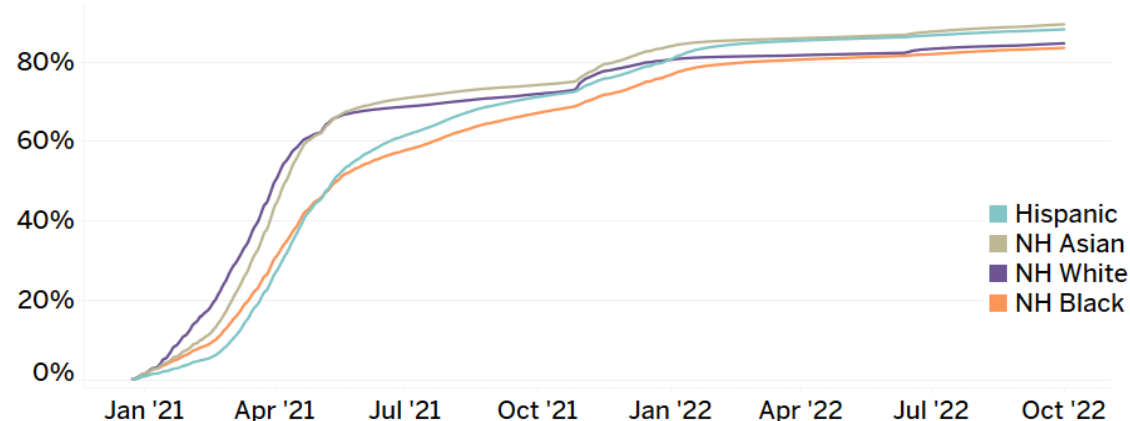
TRACTS WITH BELOW AVERAGE FIRST-DOSE RATES



Across the highlighted tracts above, 30% of the population is White non-Hispanic, 30% is Black non-Hispanic, 24% is Hispanic, and 12% is Asian/Pacific Islander.

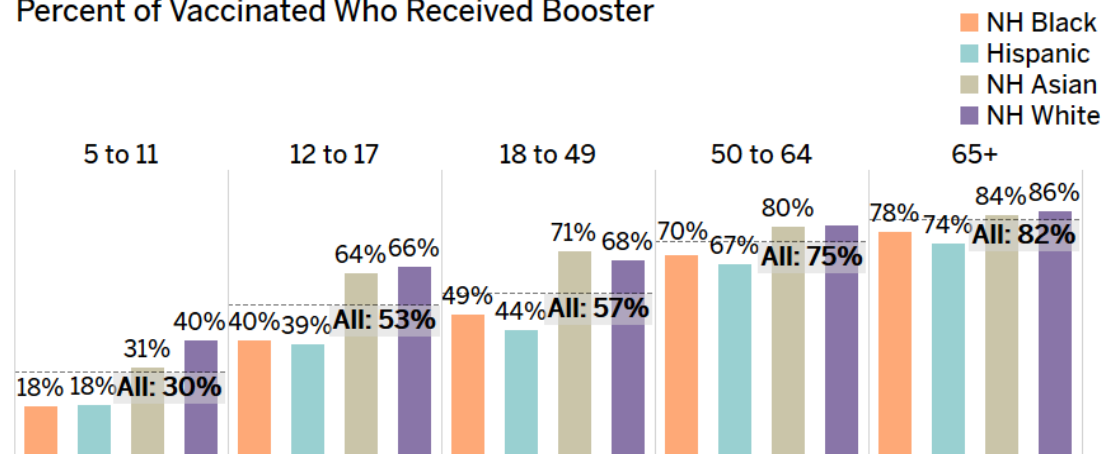
FIRST-DOSE VACCINATION RATES BY RACE

First-Dose Rates by Race/Ethnicity (all ages)



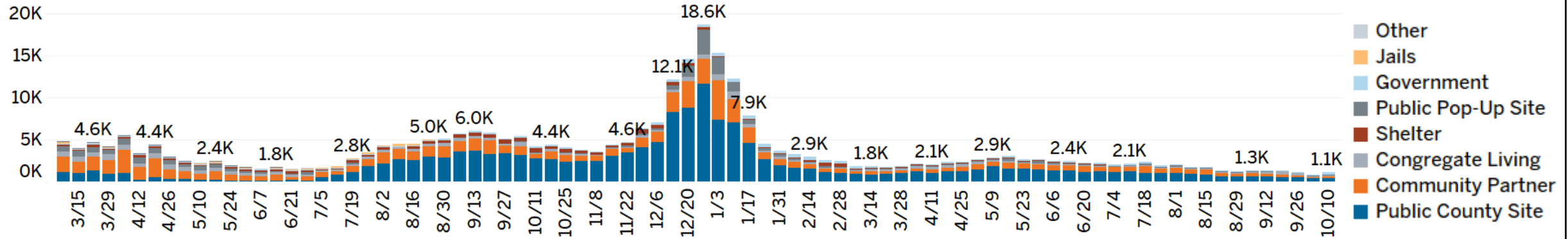
ADDITIONAL DOSE RATES BY RACE & AGE

Percent of Vaccinated Who Received Booster

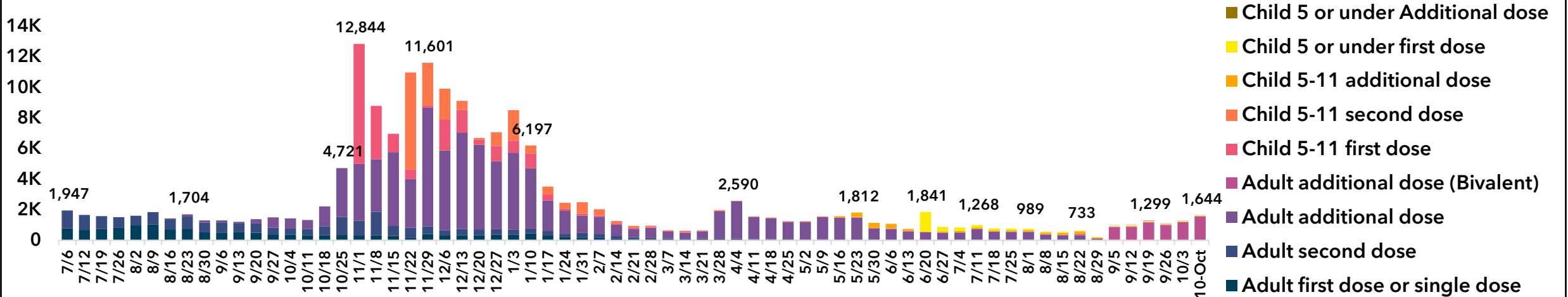


COUNTY GOVT COORDINATED TESTING & VACCINATIONS

DHHS-ADMINISTERED TESTING: 1,087 TESTS ADMINISTERED LAST WEEK



DHHS-ADMINISTERED VACCINATIONS: 1,644 DOSES ADMINISTERED LAST WEEK



Data are subject to retroactive changes. The current data collection system does not distinguish between first and second booster shots.

DATA SOURCES

This report aggregates data from several sources, some of which are publicly available. Nearly all data are subject to retroactive changes.

- Rental assistance data is generated by DHHS each Sunday prior to the publication of this report.
- Data on evictions are provided by the Montgomery County Sheriff's Office each Monday for the week prior.
- Data on shelter occupancy are collected by DHHS weekly.
- MC311 data are downloaded weekly from [DataMontgomery](#).
- Unemployment data are downloaded monthly from [FRED](#).
- Case and hospital occupancy data are provided by Maryland Department of Health. Real-time data can be found on the Montgomery County [COVID-19 Surveillance Dashboard](#).
- Data on COVID-19 deaths are available through the [Maryland Department of Health](#) dashboard and ArcGIS platform.
- Data on hospitalizations and deaths by vaccination status are available on the [DHHS COVID-19 website](#).
- Vaccine data are downloaded from the [CDC website](#) each Tuesday morning. More detailed vaccine data are provided by the Maryland Department of Health Immunet database on a weekly basis.
- Data on county government coordinated testing and vaccinations are collected by DHHS daily.