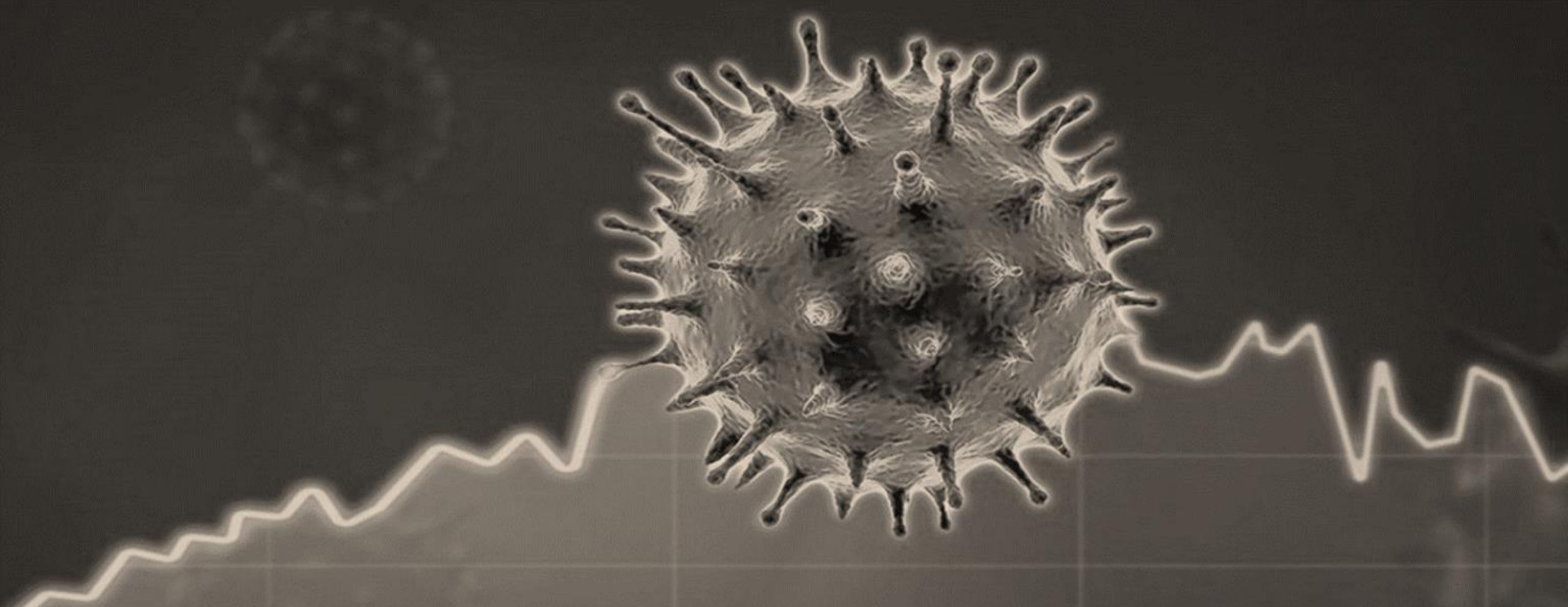


DHHS PULSE REPORT @ JULY 13

COVID-19 IMPACT AND RECOVERY

Note: This presentation includes preliminary assessments based on rapidly changing and evolving conditions. Estimates are based on best available information on 07.13.2021.



RESPONSE: EMERGENCY ASSISTANCE AND DEMAND

Note: This presentation includes preliminary assessments based on rapidly changing and evolving conditions. Estimates are based on best available information on 07.13.2021.

2021 COVID-19 EMERGENCY RENTAL RELIEF (JULY 12)

2021 APPLICATIONS

7,752

34%
LANDLORD
MATCH

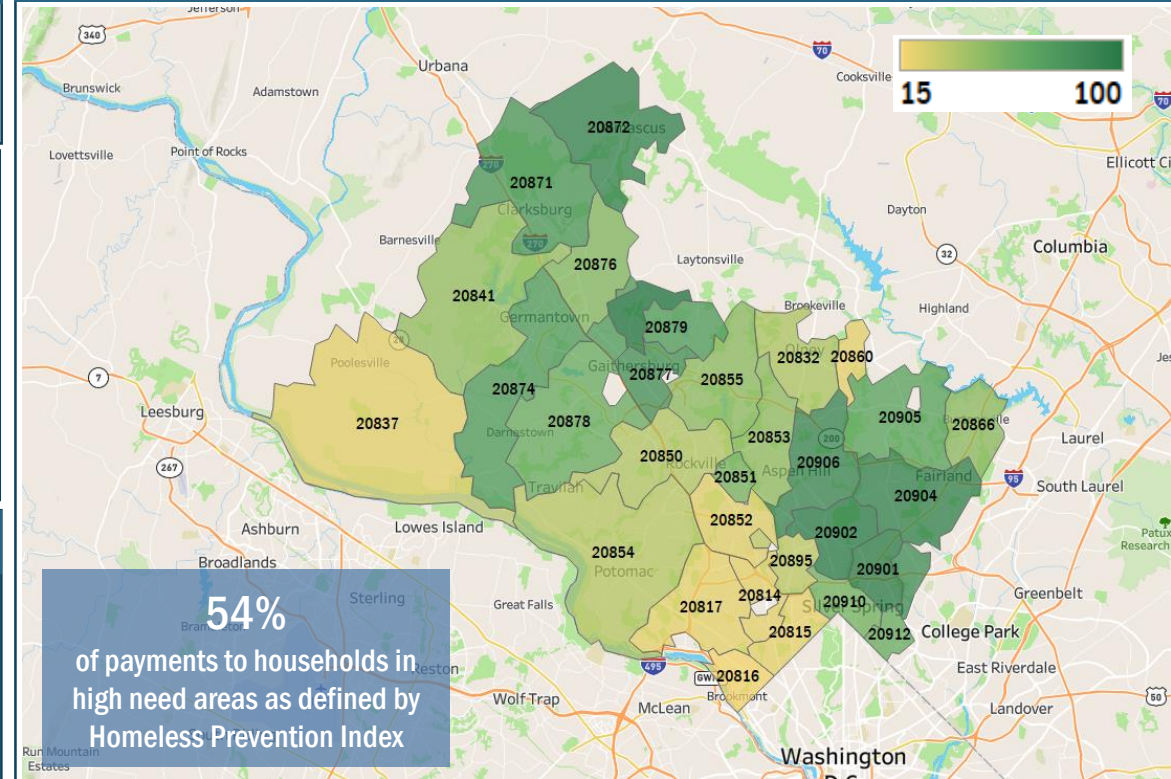
PAYMENTS ISSUED AND QUEUED

\$6.64M
+\$1.37M last week

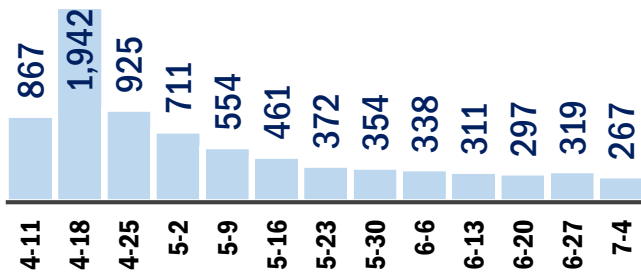
637 CLIENTS
+135 last week

\$10.4k
AVG PAYMENT
PER CLIENT

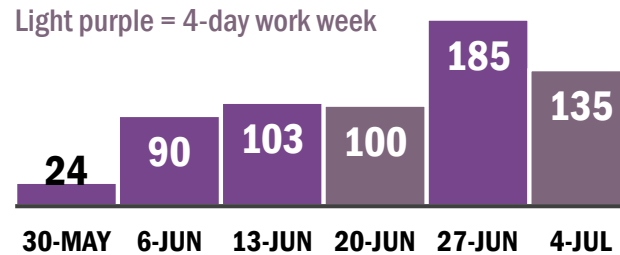
APPLICATIONS PER 1K RENTAL HOUSEHOLDS (BY ZIPCODE)



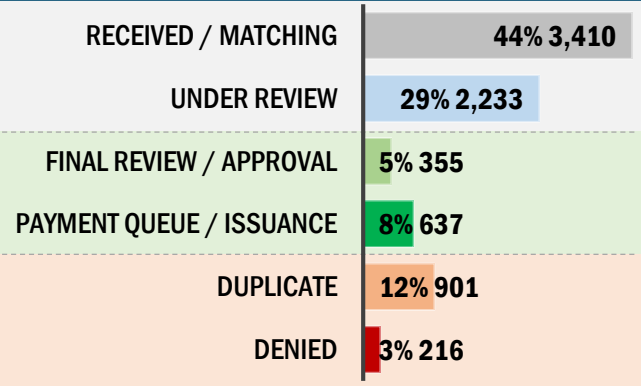
APPLICATIONS BY WEEK



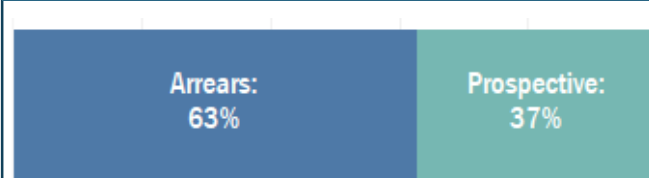
APPROVED RECIPIENTS BY WEEK



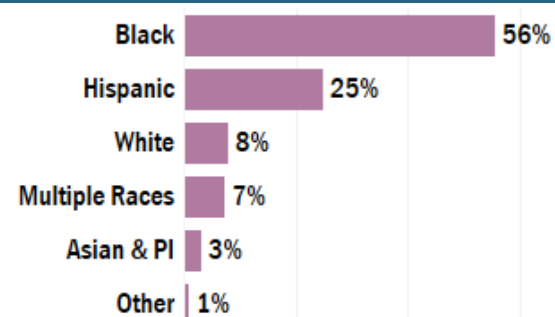
APPLICATION PROCESSING



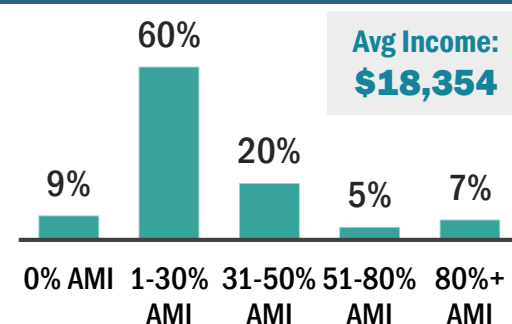
DOLLARS BY BENEFIT TYPE



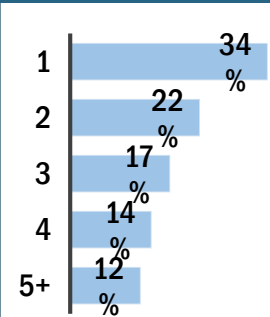
RECIPIENTS' RACE/ETHNICITY



% OF AREA MEDIAN INCOME



FAMILY SIZE



HARDSHIP

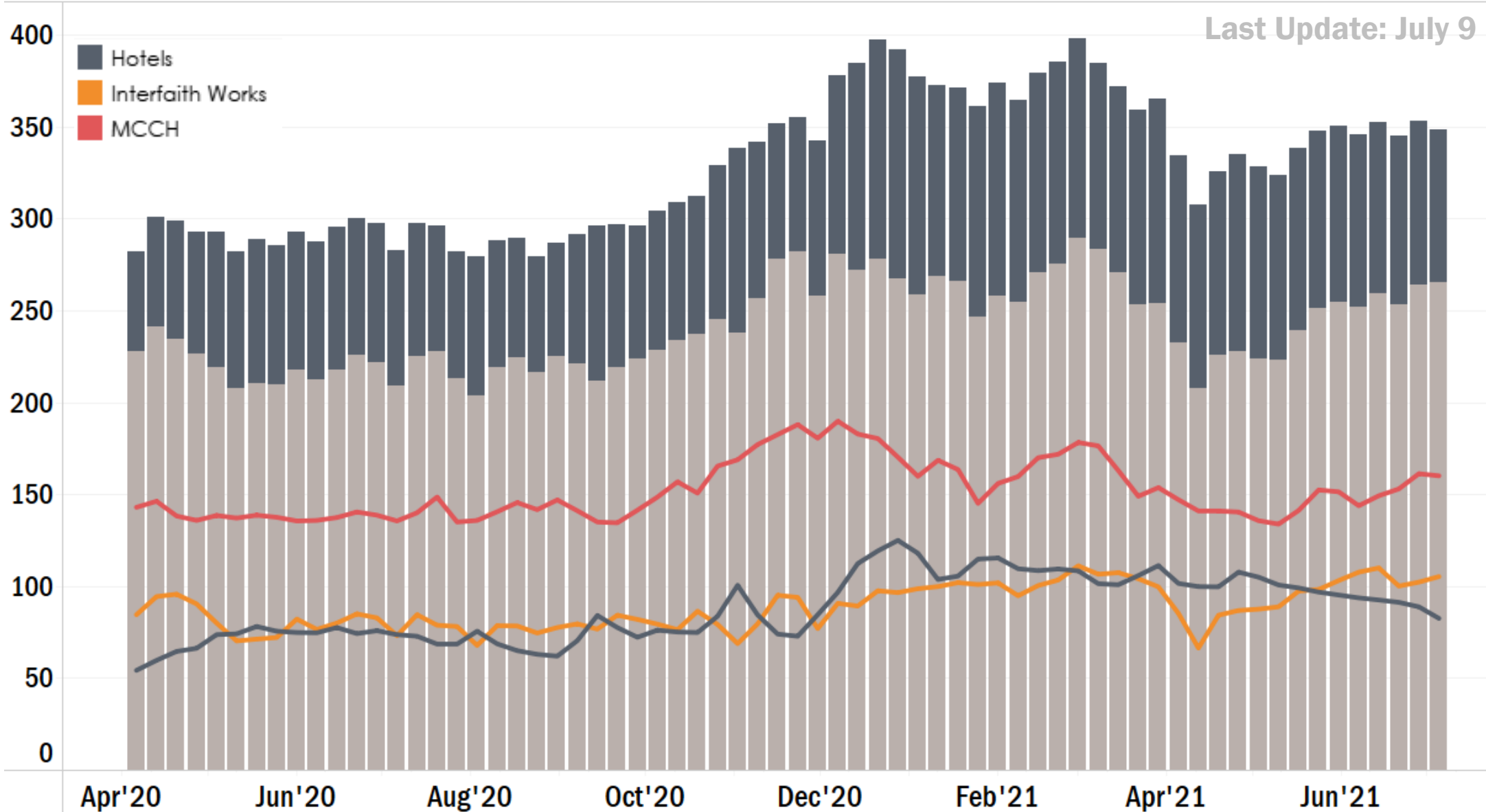


CRRP I + II (PREVIOUS ROUNDS)

4,496
HOUSEHOLDS

\$17.9M
PAYMENTS

AVERAGE DAILY COUNT OF SHELTER RESIDENTS DURING COVID-19



CHILD CARE (JULY 12)

SCHOOL-AGED CHILD CARE

APPROVED SUBSIDIES \$

\$4.03M (+37K)

APPROVED CHILDREN

1,879 (+50)

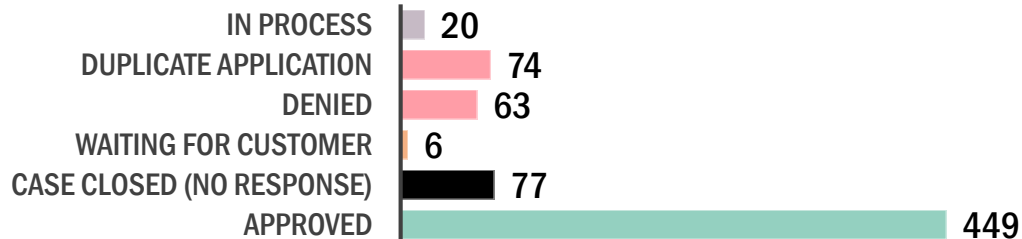
AVERAGE LENGTH (FEB-JUN)

4 MONTHS

AVG MONTHLY\$ (FEB-JUN)

\$819

VOUCHER APPLICATIONS BY STAGE (689 TOTAL)



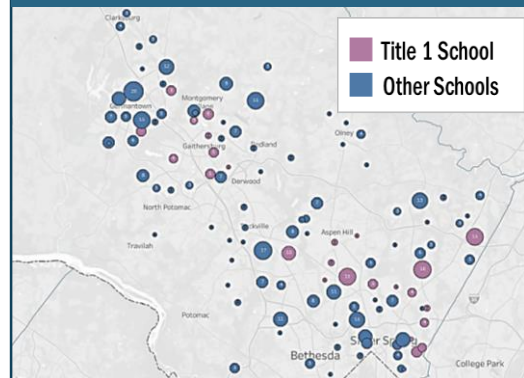
VOUCHERS ISSUED

1,811 (\$3.99M)

INVOICES PAID

74% (\$2.04M)

BY SCHOOL ATTENDED



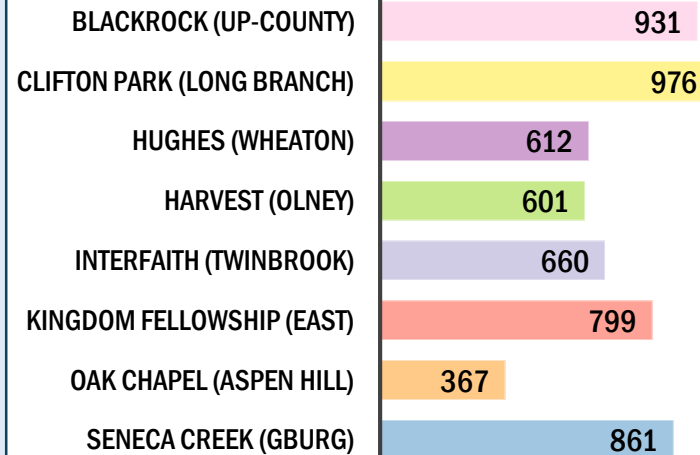
FOOD SECURITY AND HUBS (JULY 2)

SERVICE CONSOLIDATION HUBS

Eight Service Consolidation Hubs are operational and working at full speed with food distribution, food home deliveries, and diaper distribution—and are integrating other activities into their service model. Recent enhancements have focused on embedding case managers into the hubs.

HOUSEHOLDS SERVED LAST WEEK

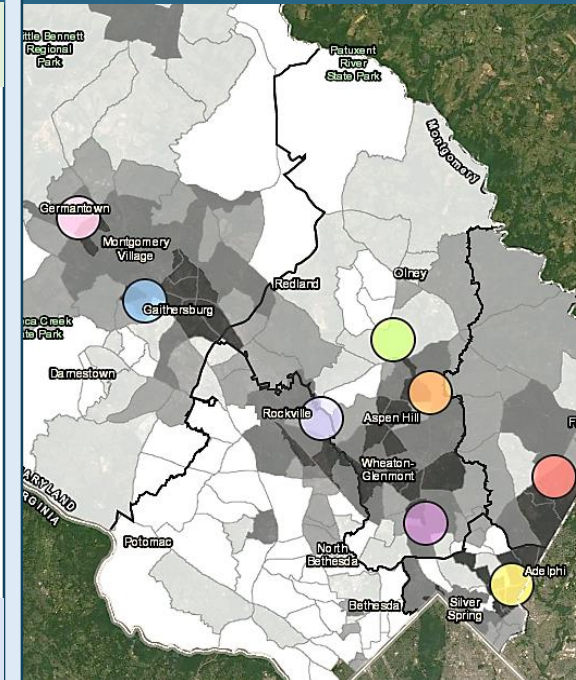
TOTAL: 5,807 (-1%)



+56 case management clients (791 YTD)

6/20-26 partner reports

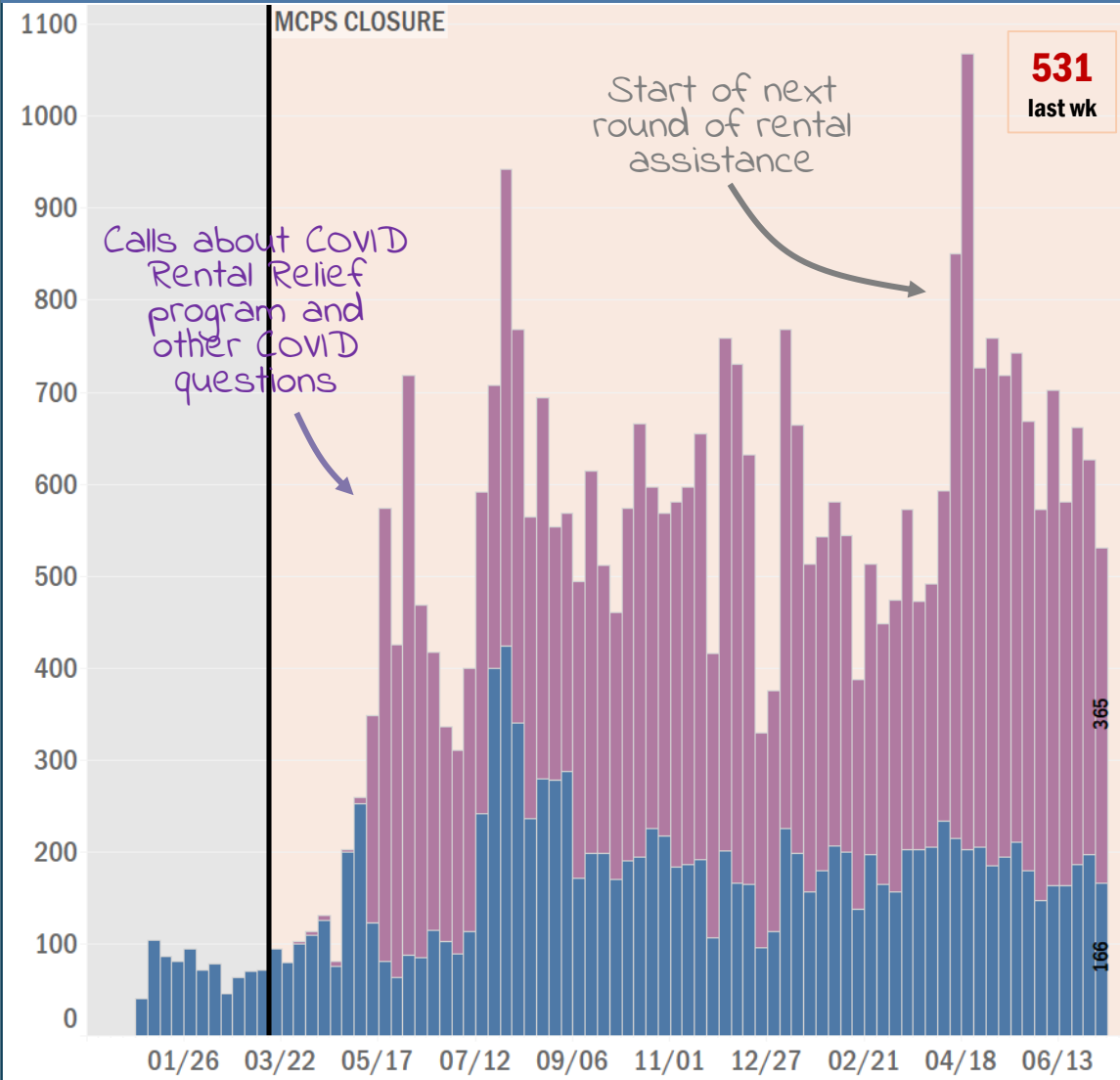
MAP OF HUB LOCATIONS



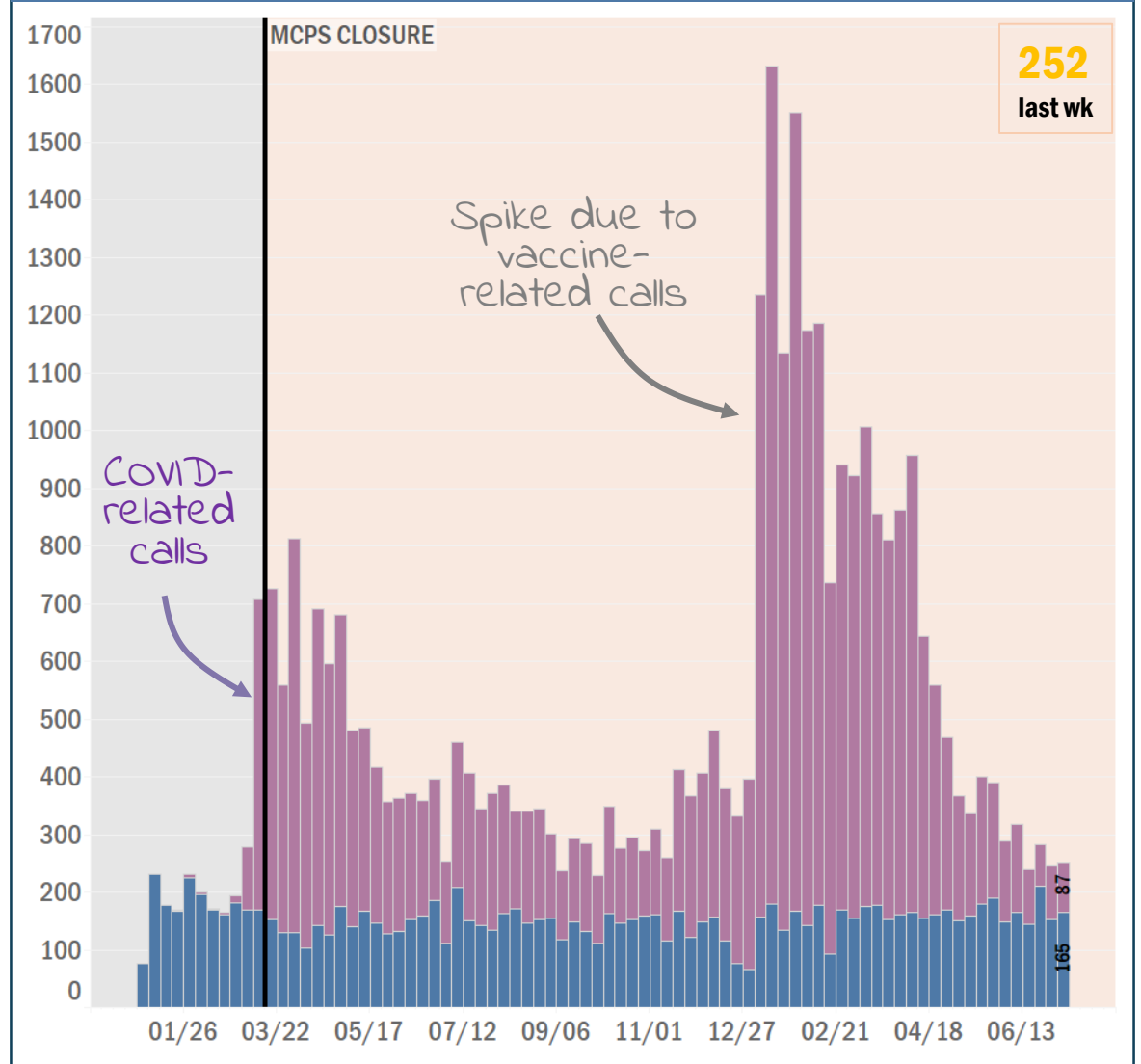
White-to-Black background shows % of residents below 200% of the poverty line.

MC311 WEEKLY CALL VOLUME (4-DAY WORK WEEK)

SERVICES TO END + PREVENT HOMELESSNESS: HIGH VOLUME

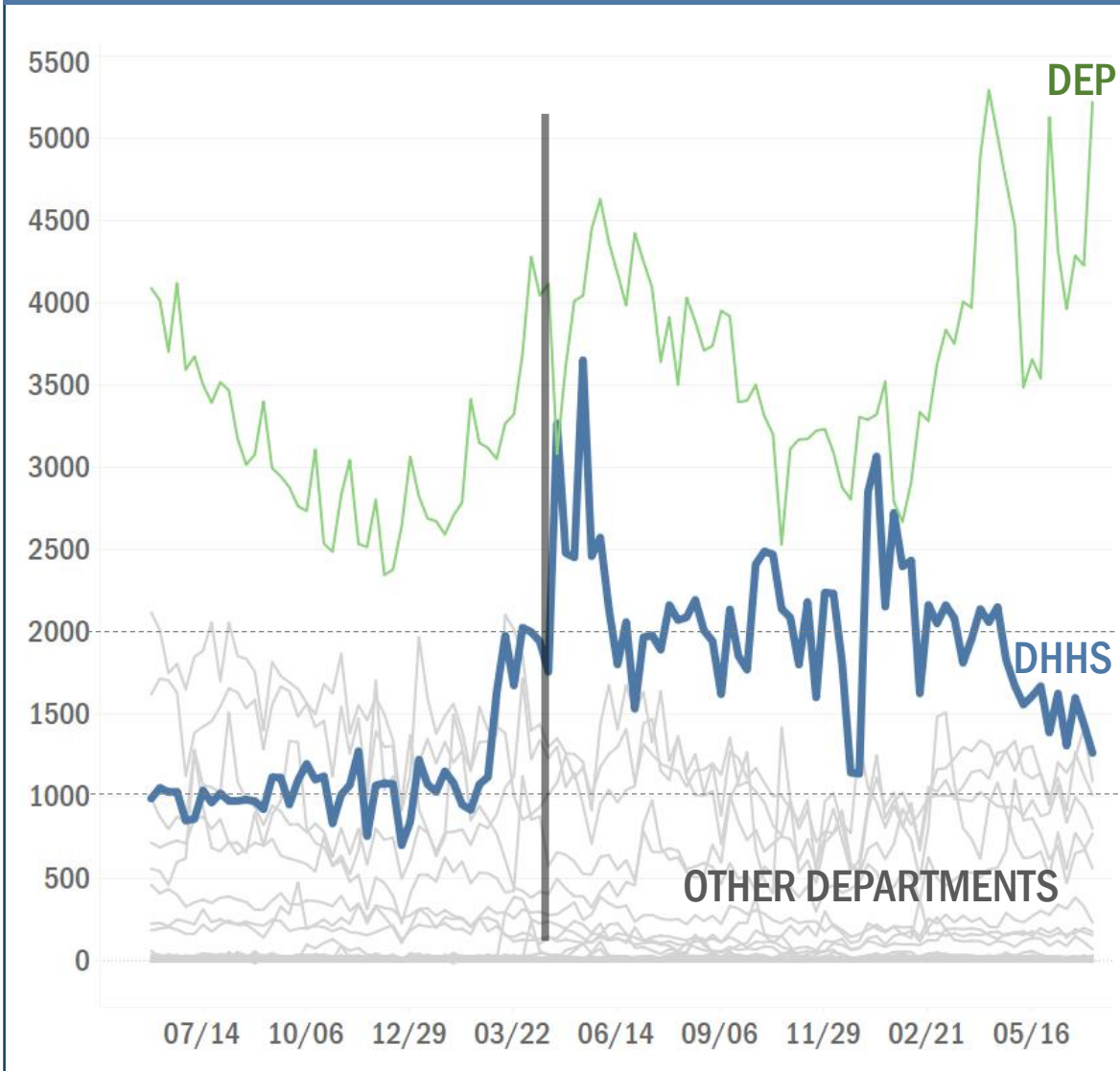


PUBLIC HEALTH CALLS: REVERTING TO PRE-COVID LEVELS

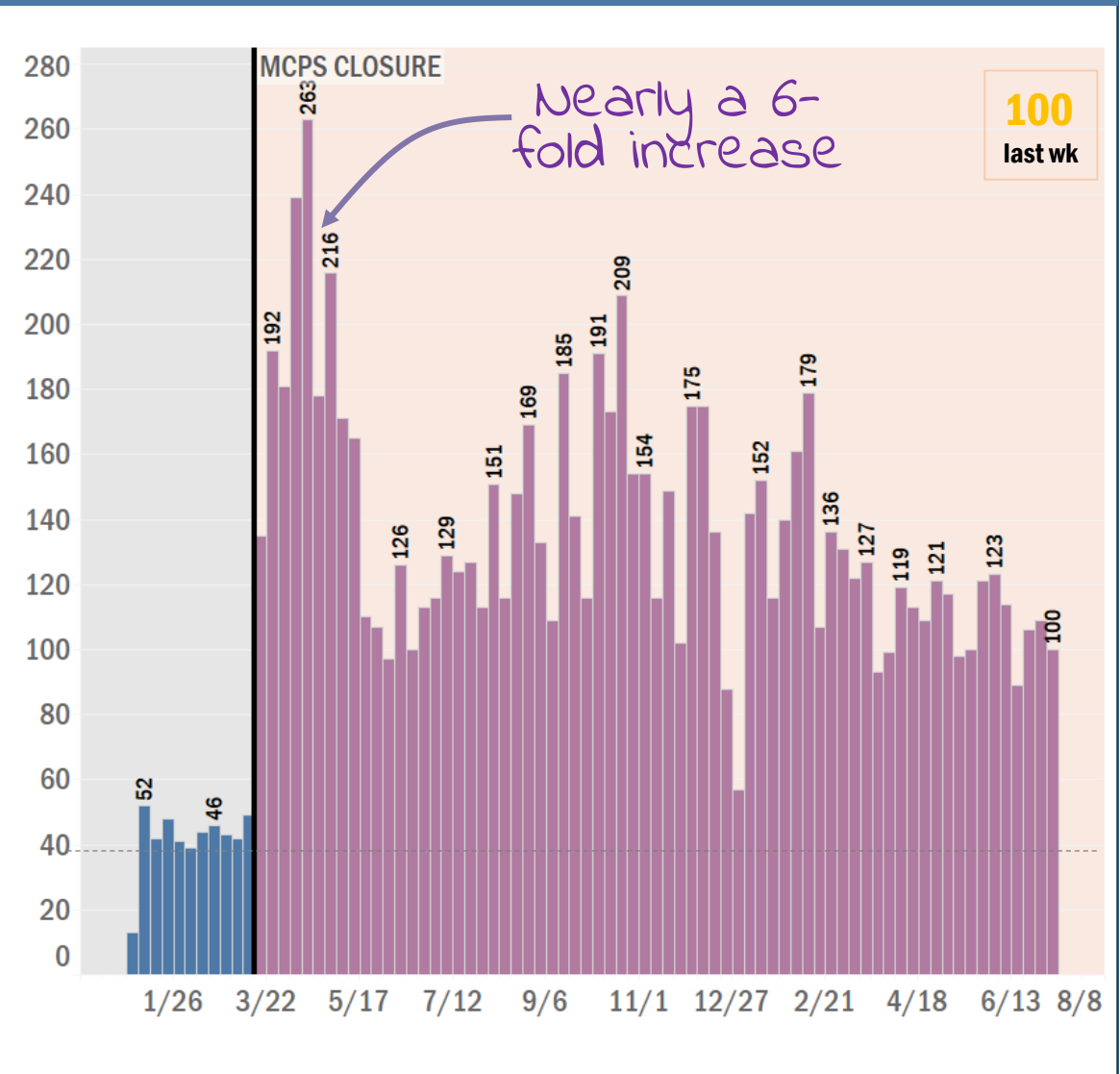


MC311 WEEKLY CALL VOLUME (4-DAY WORK WEEK)

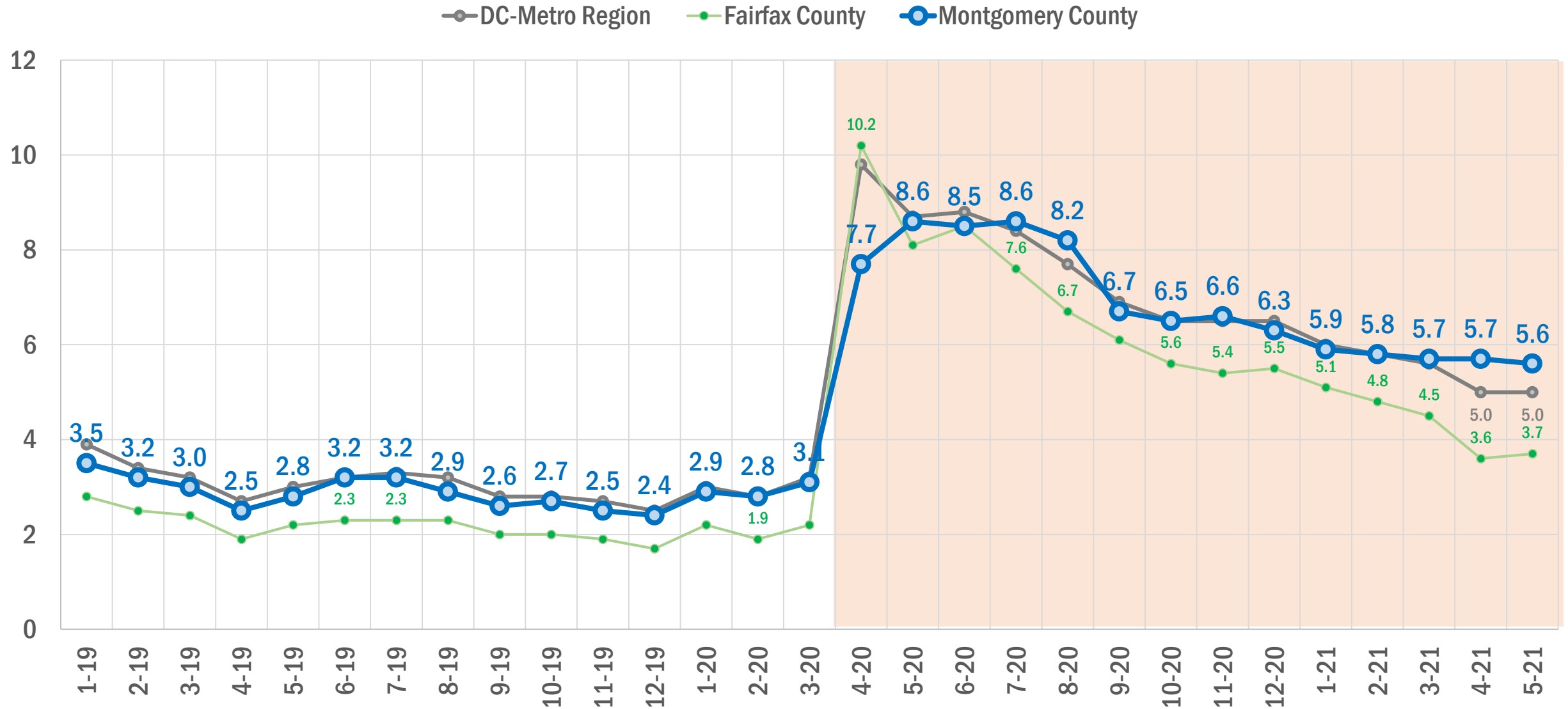
ALL DHHS CALLS (VS. OTHER DEPTS): **1,266** CALLS LAST WK



CALLS FOR APPLYING TO PUBLIC ASSISTANCE PROGRAMS



IMPACT OF COVID-19: UNEMPLOYMENT RATE IN MONTGOMERY COUNTY



Source: Bureau of Labor Statistics. Data through May. Numbers are NOT seasonally adjusted. Two-month delay in reporting.

COVID-19 VACCINATIONS

JULY 13 UPDATE

MONTGOMERY COUNTY DHHS



COVID-19 VACCINATIONS: 9-IN-10 ELIGIBLE @ AT LEAST ONE DOSE (CDC)

% OF COUNTY RESIDENTS VACCINATED

AT LEAST 1 DOSE

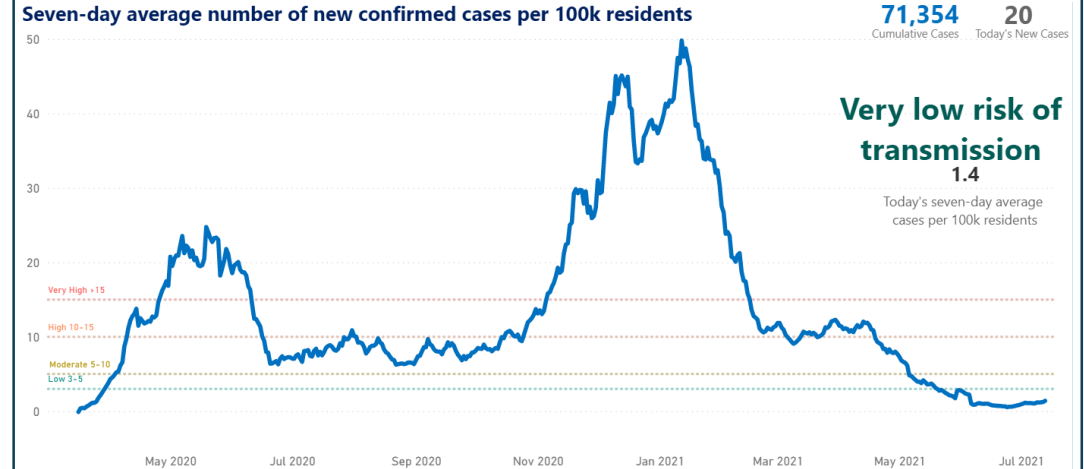
STATE DATA	CDC ESTIMATE*
68% 715,992	76% 799,135

BOTH DOSES OR SINGLE J&J

STATE DATA	CDC ESTIMATE*
63% 661,111	69% 725,986

*CDC estimate includes data on County residents receiving vaccinations in other states and DC.

CONFIRMED COVID CASES PER 100K RESIDENTS



% OF COUNTY RESIDENTS VACCINATED BY AGE GROUP (CDC)



37,323 children aged 12-15 reported as receiving first dose (59%-68% of total @ 90% confidence).

VAX TYPE FOR VACCINATED COUNTY RESIDENTS (1ST DOSE ONLY)

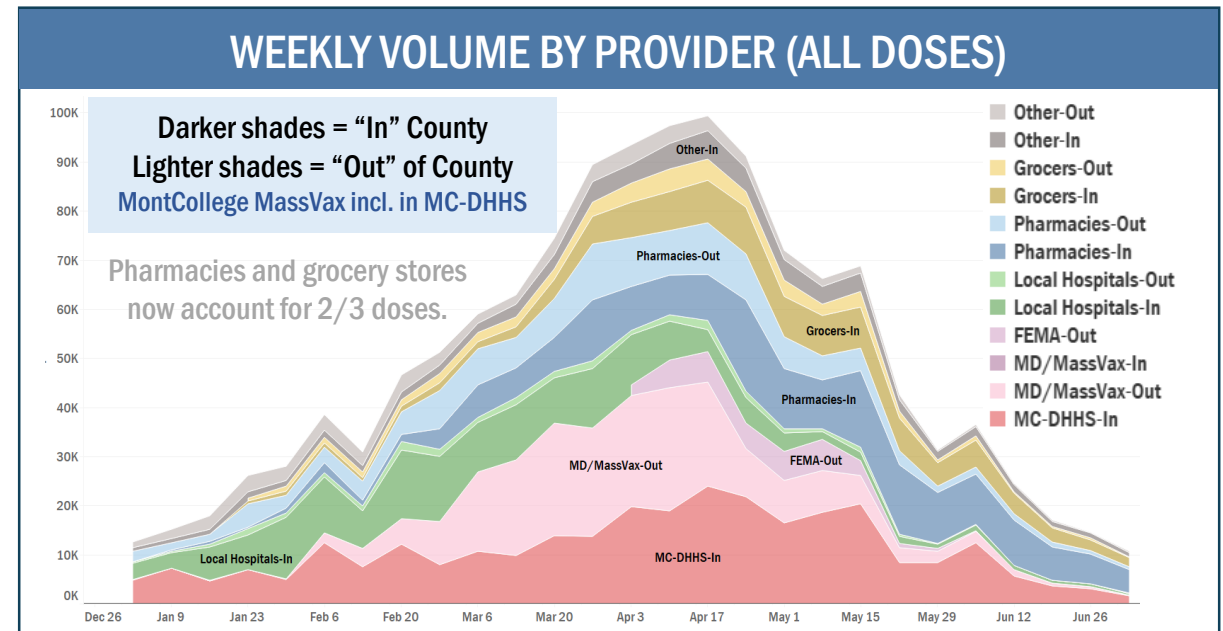
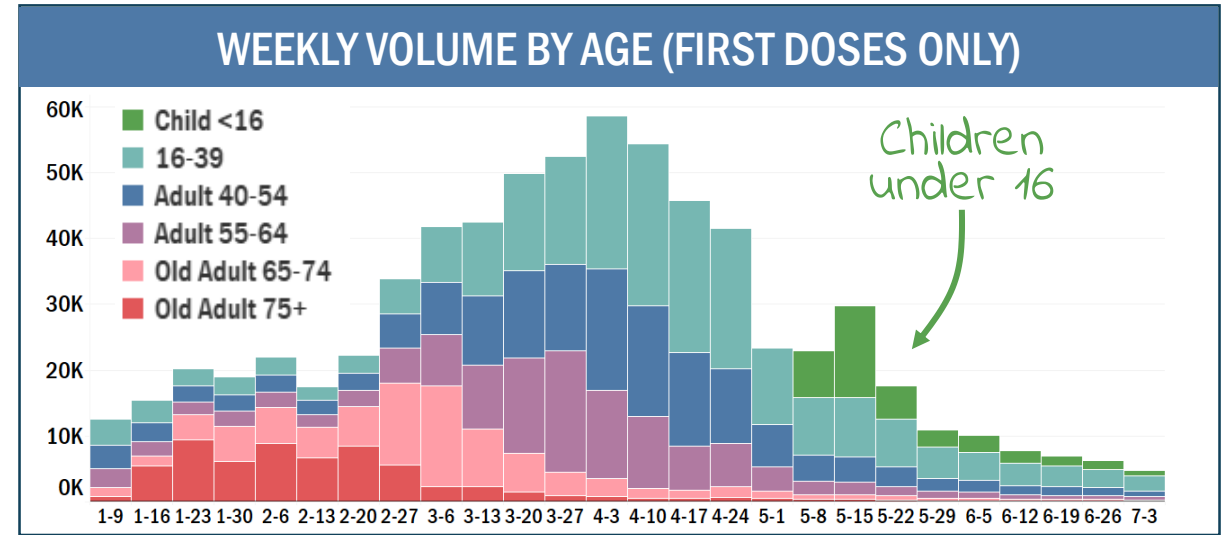
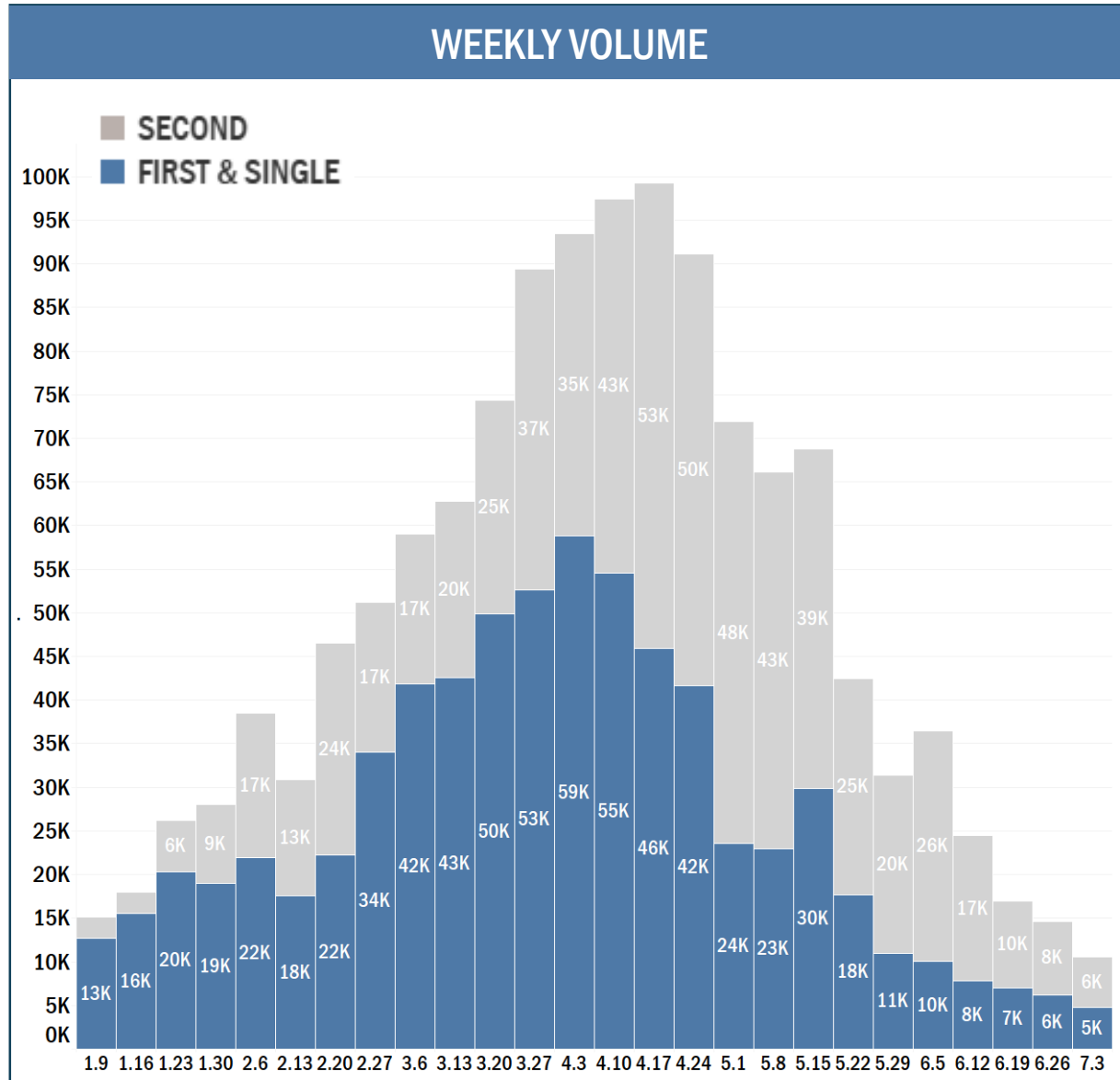


BENCHMARKING: TOP 10 MD COUNTIES (CDC)

County	% Pop at Least 1 Dose (CDC)	% Pop Fully Vaxed (CDC)	% of 12+ Fully Vaxed (CDC)
Montgomery County	76.1	69.1	81.4
Howard County	73.1	68.0	80.5
Anne Arundel County	65.1	59.7	70.2
Frederick County	64.4	59.3	69.7
Talbot County	64.9	60.2	68.2
Carroll County	62.3	58.3	67.6
Harford County	60.2	55.8	65.1
Baltimore County	60.6	55.8	65.1
Worcester County	62.0	56.6	63.5
Kent County	60.6	55.6	61.7

CDC ranks Montgomery County #1 nationwide for % of 12+ population fully vaccinated among all US Counties with > 300k residents.

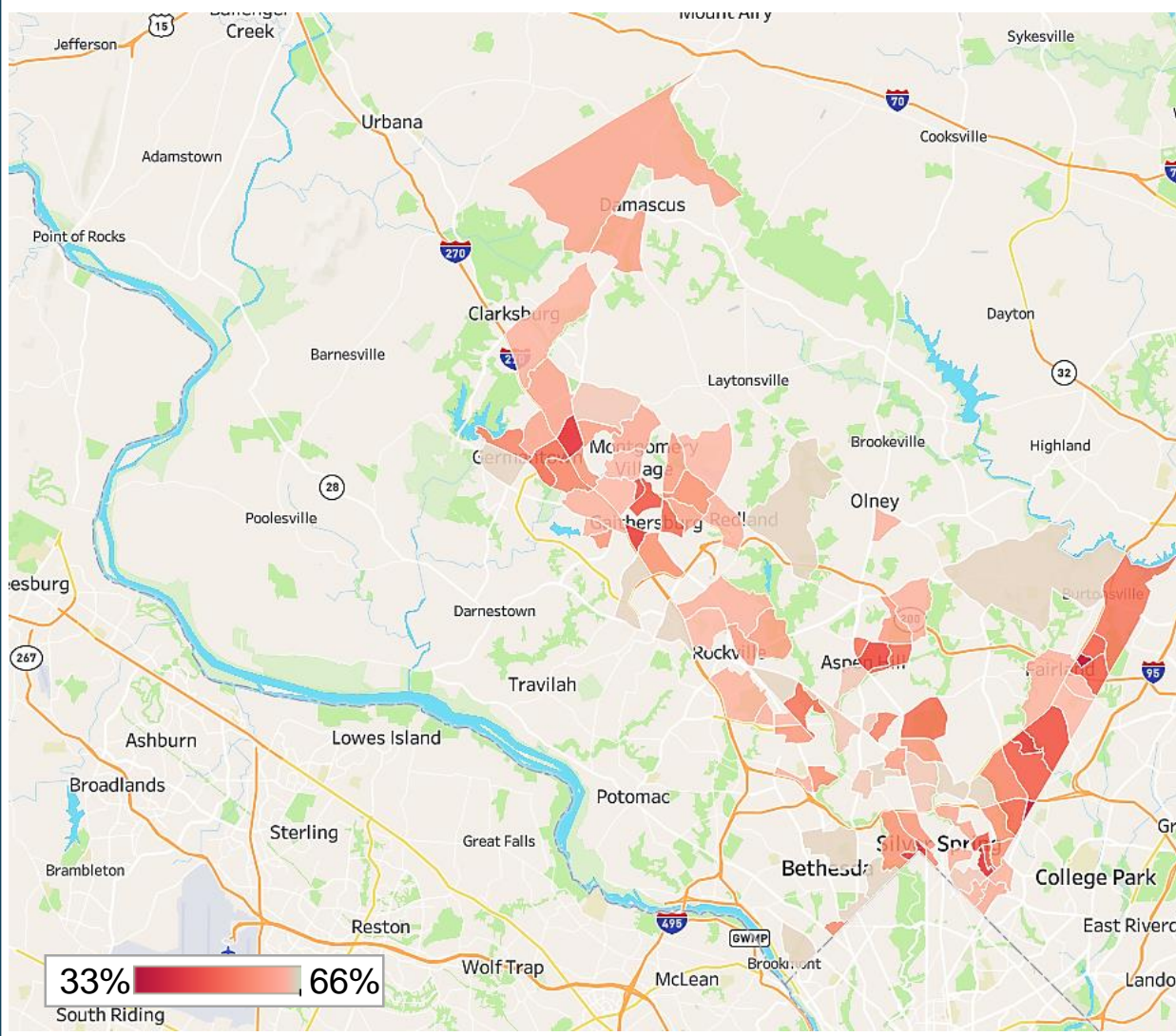
VACCINATION COUNTS: CHANGE OVER TIME AND BY AGE GROUP



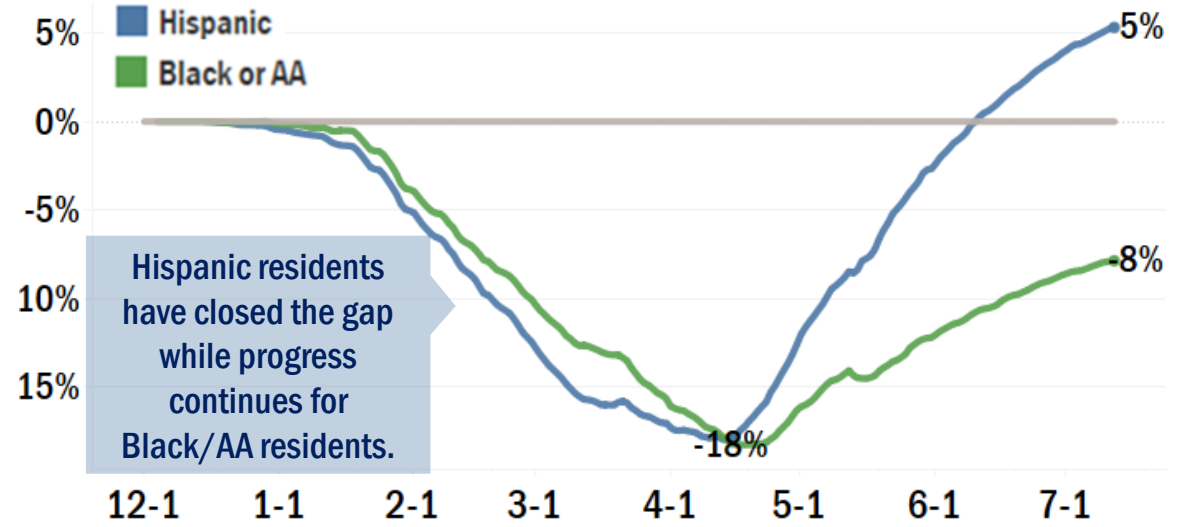
Due to delays between administration and reporting, charts above may not fully reflect all vaccinations conducted during the past 2 days.

VACCINATION GAPS AND DIFFERENTIALS BY GEOGRAPHY AND RACE/ETH

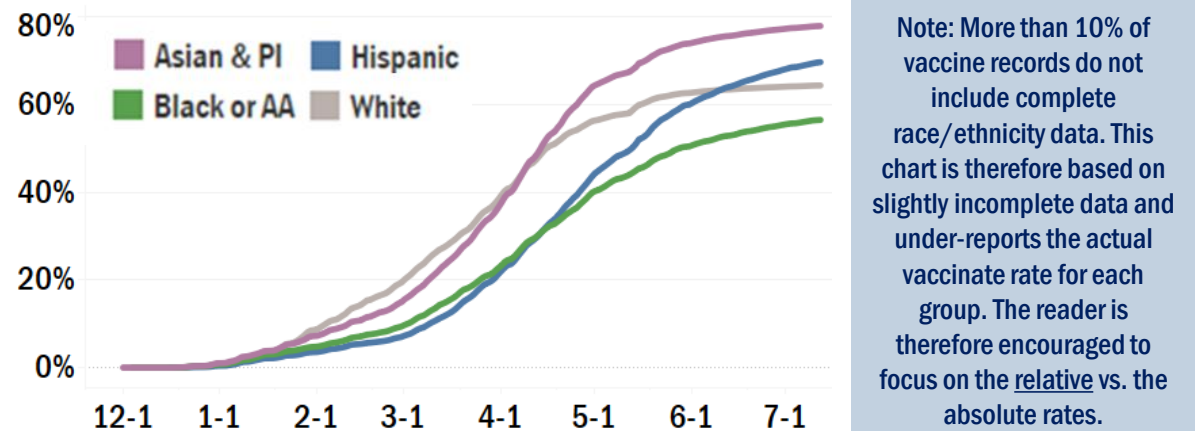
TRACTS WITH BELOW-AVERAGE FIRST DOSE VAX RATES (ALL AGES)



BY RACE/ETHNICITY: VAX GAP RELATIVE TO WHITE NH (ALL AGES)



BY RACE/ETHNICITY: FIRST DOSE VACCINATION RATES (ALL AGES)



COUNTY GOVERNMENT COORDINATED TESTING AND VACCINATIONS

COVID-19 VACCINATIONS

DHHS ADMINISTERED

329,813

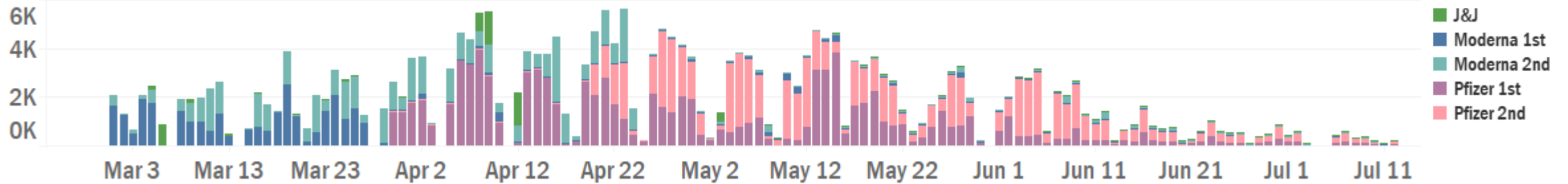
ALL TIME

DHHS LAST 7 DAYS

2,277

(936 1st doses)

DAILY TOTALS BY VACCINE TYPE (MARCH - CURRENT)



COVID-19 TESTING

DHHS ADMINISTERED

286,738

ALL TIME

DHHS LAST 7 DAYS

1,616

ALL PROVIDERS

WEEKLY COUNTY TOTALS



DHHS ADMINISTERED - WEEKLY TOTALS BY SETTING (MARCH - CURRENT)

