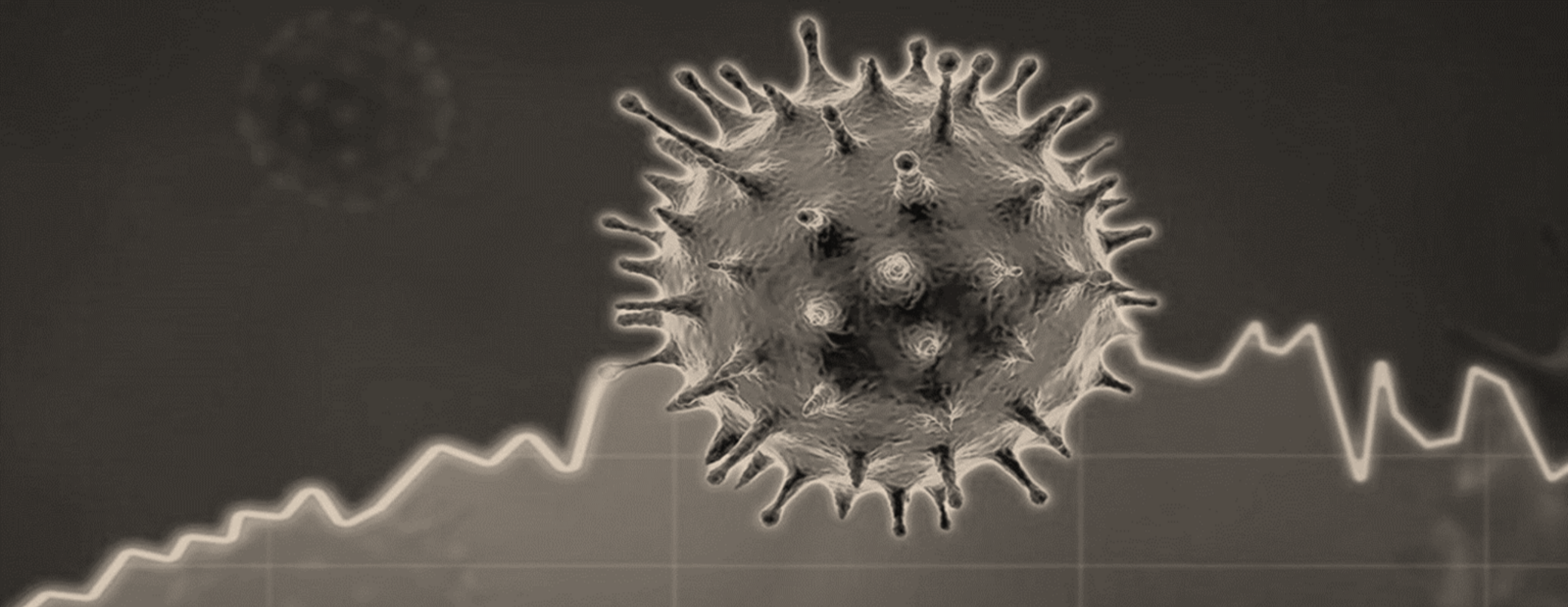


DHHS PULSE REPORT @ AUG 9

COVID-19 IMPACT AND RECOVERY

Note: This presentation includes preliminary assessments based on rapidly changing and evolving conditions. Estimates are based on best available information on 08.09.2021.



RESPONSE: EMERGENCY ASSISTANCE AND DEMAND

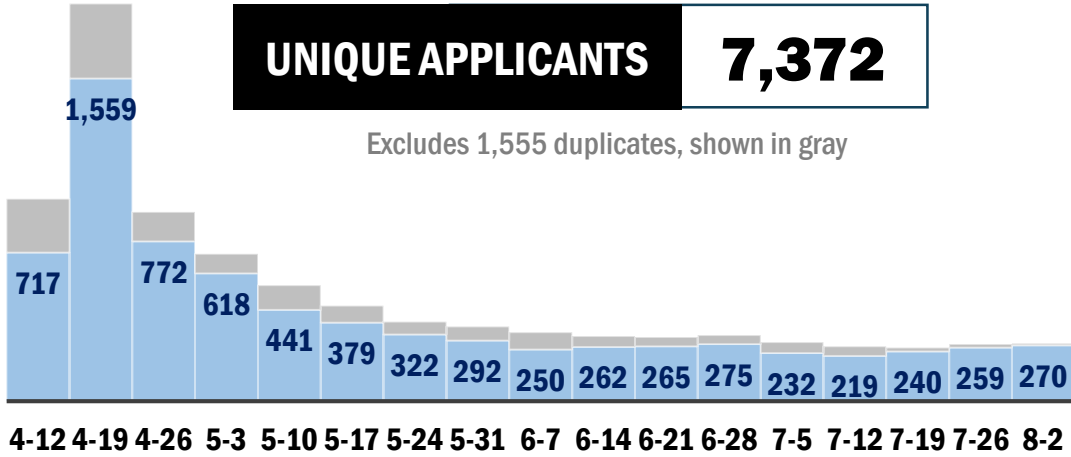
Note: This presentation includes preliminary assessments based on rapidly changing and evolving conditions. Estimates are based on best available information on 08.09.2021.

2021 COVID-19 RENTAL RELIEF: PROCESS UPDATE (AUG 9)

APPLICATIONS

UNIQUE APPLICANTS 7,372

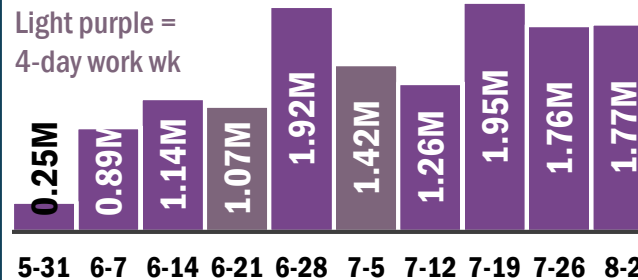
Excludes 1,555 duplicates, shown in gray



APPROVED PAYMENTS

TOTAL \$13.43M CLIENT AVG **10.3k**

Light purple = 4-day work wk



TOTAL C-19 RENTAL ASSISTANCE

The current round of funding adds to two previous rounds of COVID19 assistance.

PROGRAM	PAYMENTS	HOUSEHOLDS
PAST ROUNDS	\$17.9M	4,496
CURRENT ROUND	\$13.4M	1,304
ALL-TIME	\$31.3M	5,800

APPLICATION PROCESSING - BY STAGE

395 Apps processed last week

PROCESSED 3,667 (41%)

RECEIVED / PENDING MATCHING LANDLORD APP
3,138 (35%)

ASSIGNED + UNDER REVIEW
2,122 (24%)

DUPLICATE 1,555 (17%)

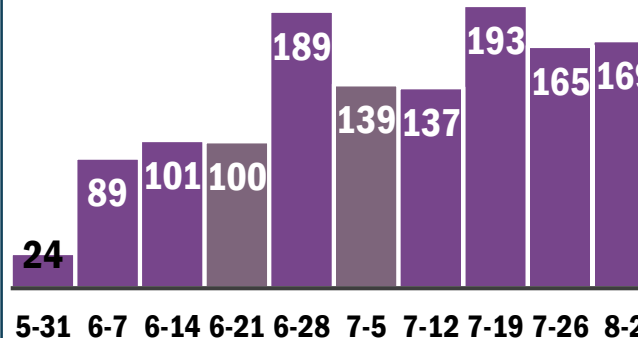
DENIED 445 (5%)

FINAL REVIEW 363 (4%)

APPROVED 1,304 (15%)

APPROVED HOUSEHOLDS

TOTAL 1,304



65% SPENDING TARGET TRACKER

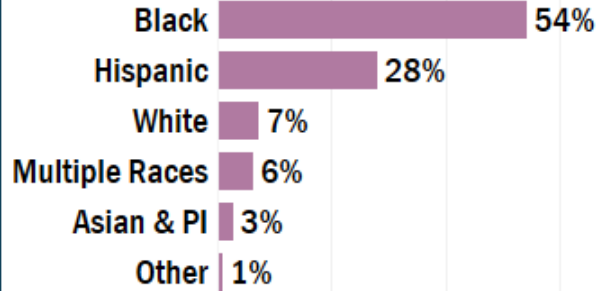
Federal guidelines call for expending **65%** of the \$59M fund (i.e. \$38.35M) by **Sep 30** or else risk return of funds. Spending includes an est. \$5.0M in admin costs.

\$18.4M CURRENT SPENDING | **31%** OF FUNDS | **48%** OF 65% TARGET

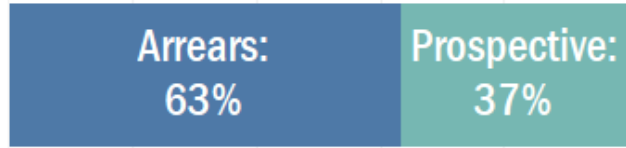
8 weeks remaining

RENT RELIEF: RECIPIENT DETAILS

RECIPIENTS' RACE/ETHNICITY

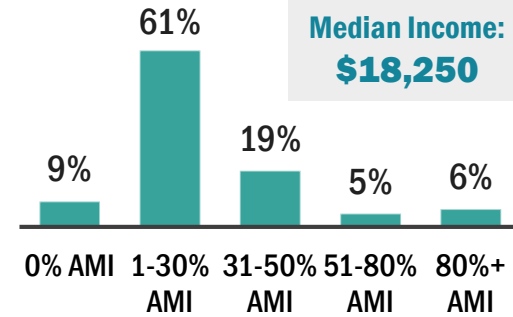


\$ BY BENEFIT TYPE

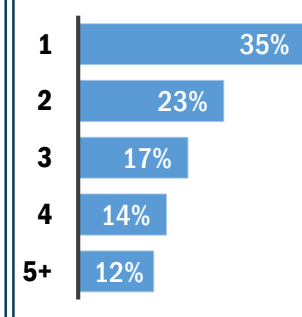


RENT RELIEF: APPLICANT DETAILS

% OF AREA MEDIAN INCOME



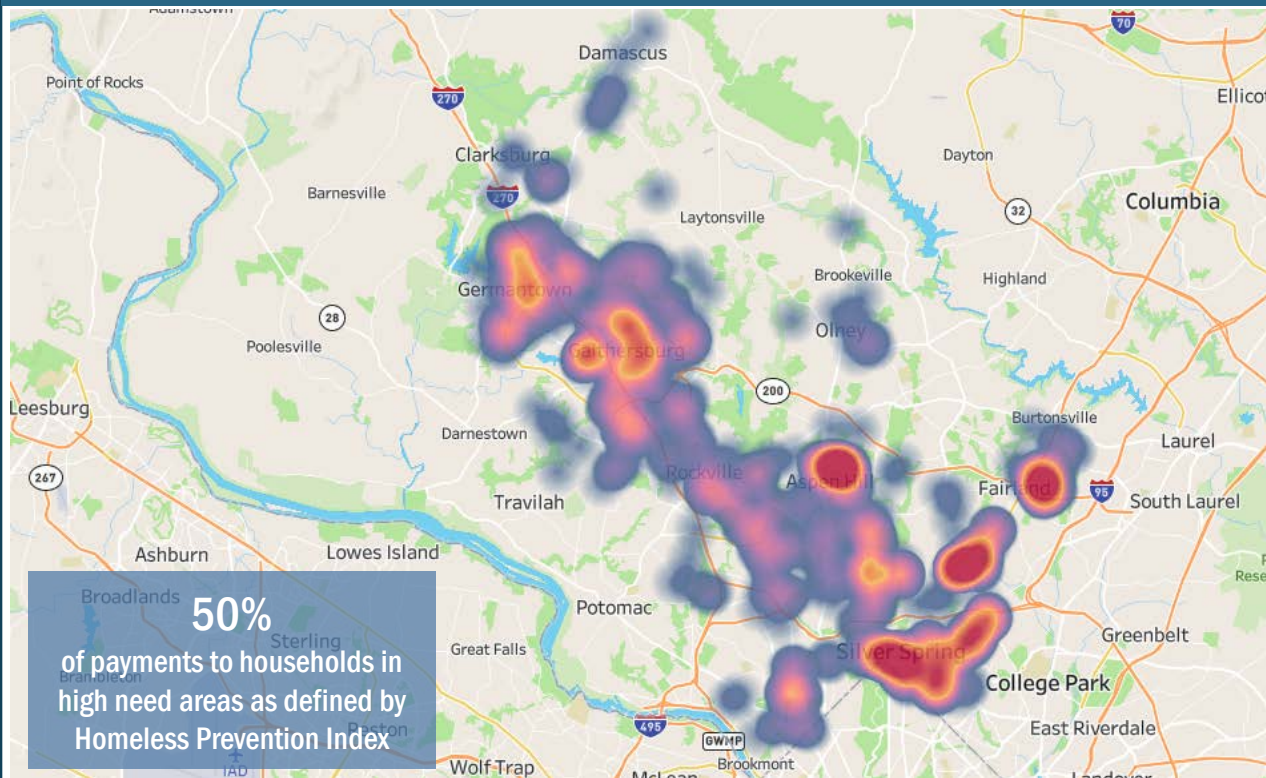
FAMILY SIZE



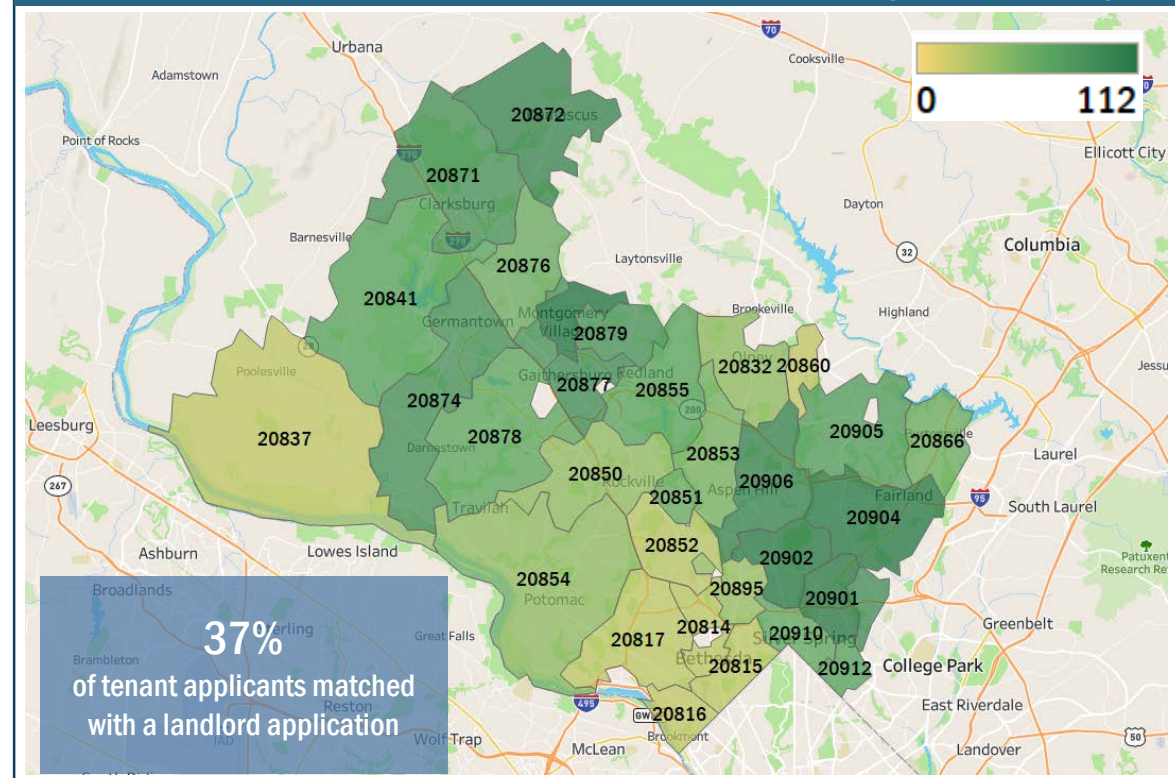
HARDSHIP



HEATMAP OF RECIPIENTS



APPLICATIONS PER 1K RENTAL HOUSEHOLDS (BY ZIPCODE)



EVICTION TRACKER

DHHS and its partners conduct outreach at courts and prioritize applications from tenants with an eviction notice.

WRITS – UNIQUE RESIDENTIAL

439 SCHEDULED FOR EVICTION AFTER JULY 19

NEW THIS WEEK

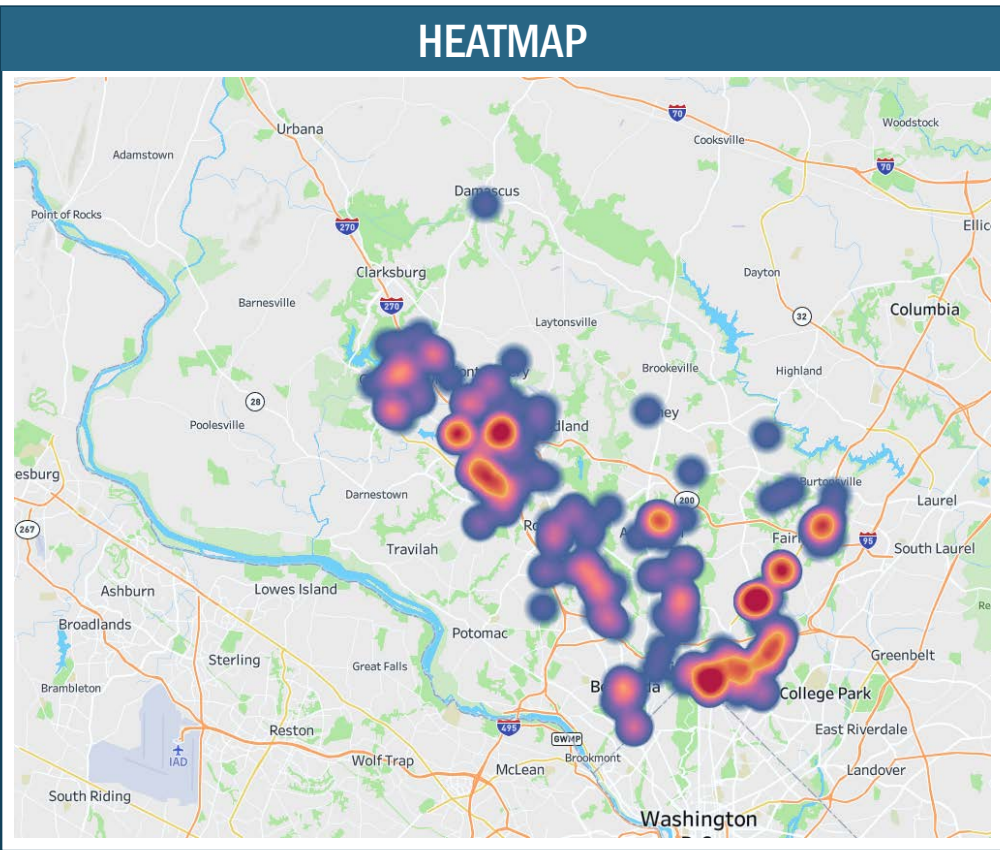
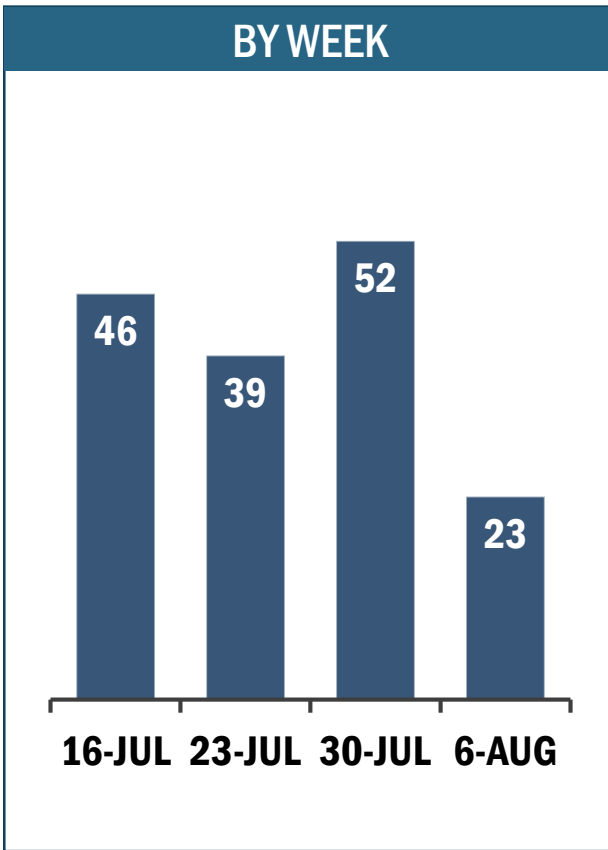
+23

% WITH RENT RELIEF APP

39% OF HOUSEHOLDS W/ WRIT HAVE APPLIED FOR ASSISTANCE

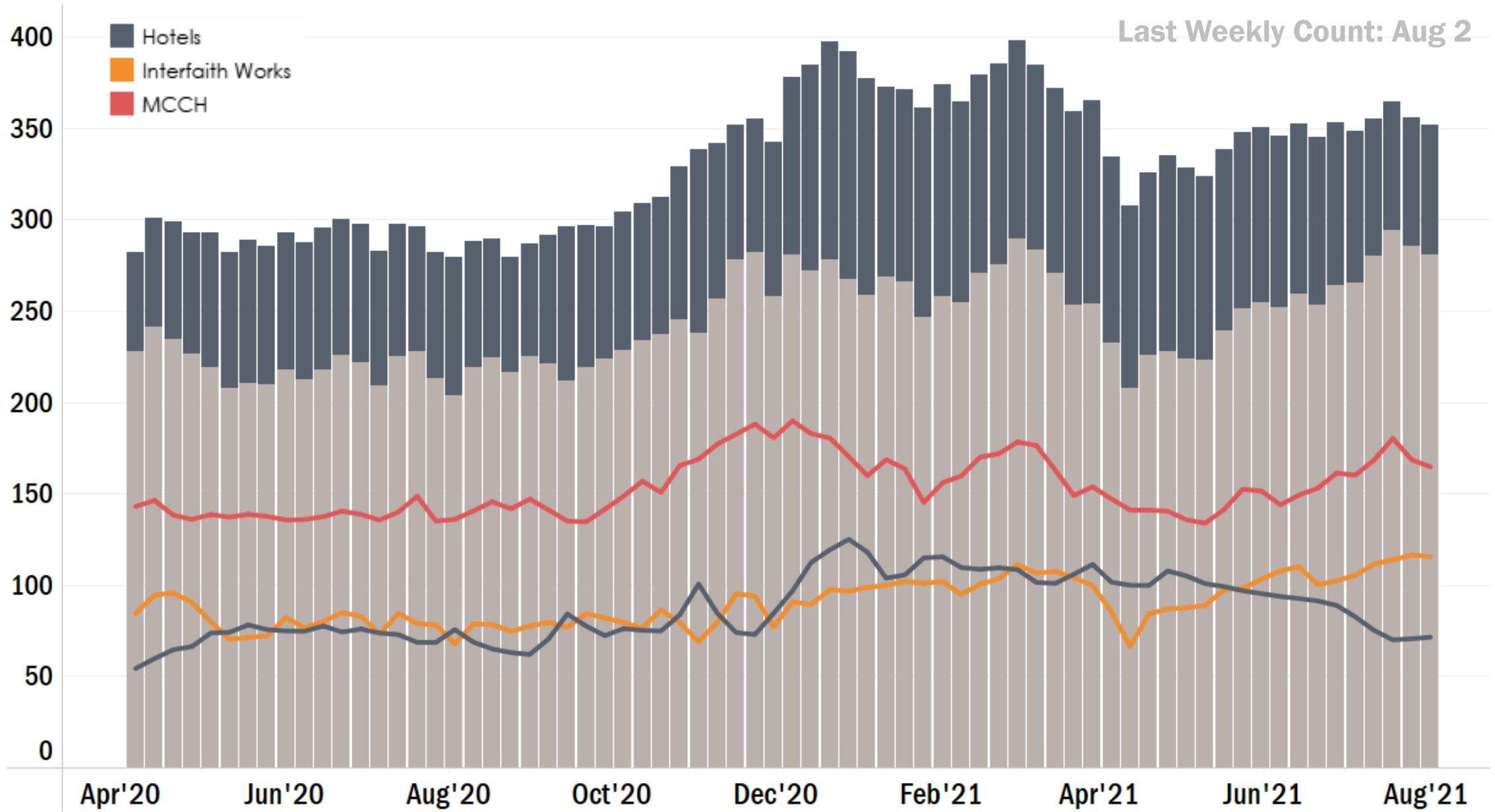
CONTEXT: EVICTION RATE

< 8% OF WRITS TYPICALLY RESULT IN EVICTION



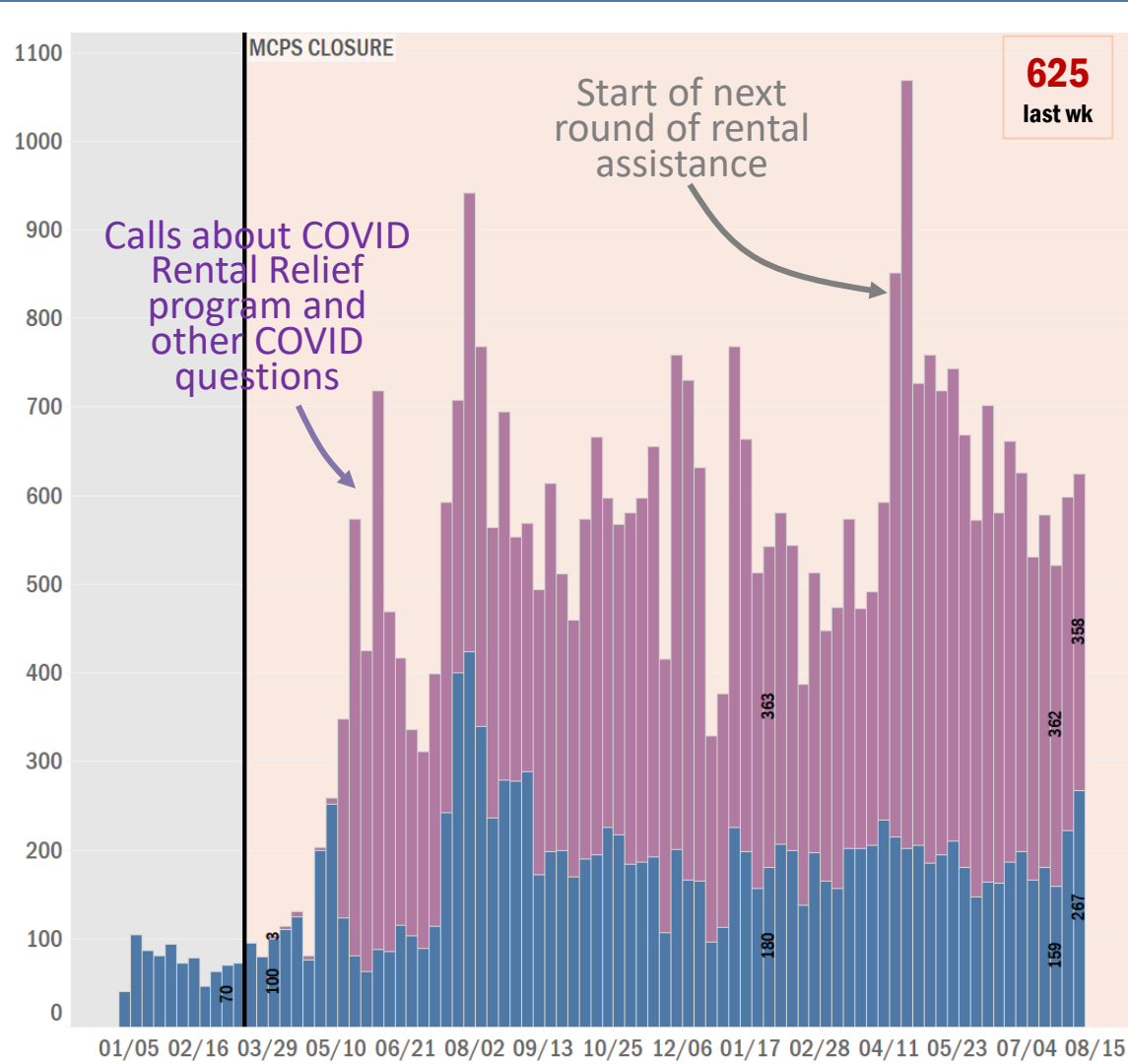
NOTE: Records on writs for eviction can include commercial tenants as well as multiple notices for a single household. The stats above attempt to capture unique residential households only, but it is not always possible to make such distinctions.

SHELTER RESIDENTS: AVERAGE DAILY COUNT BY WEEK

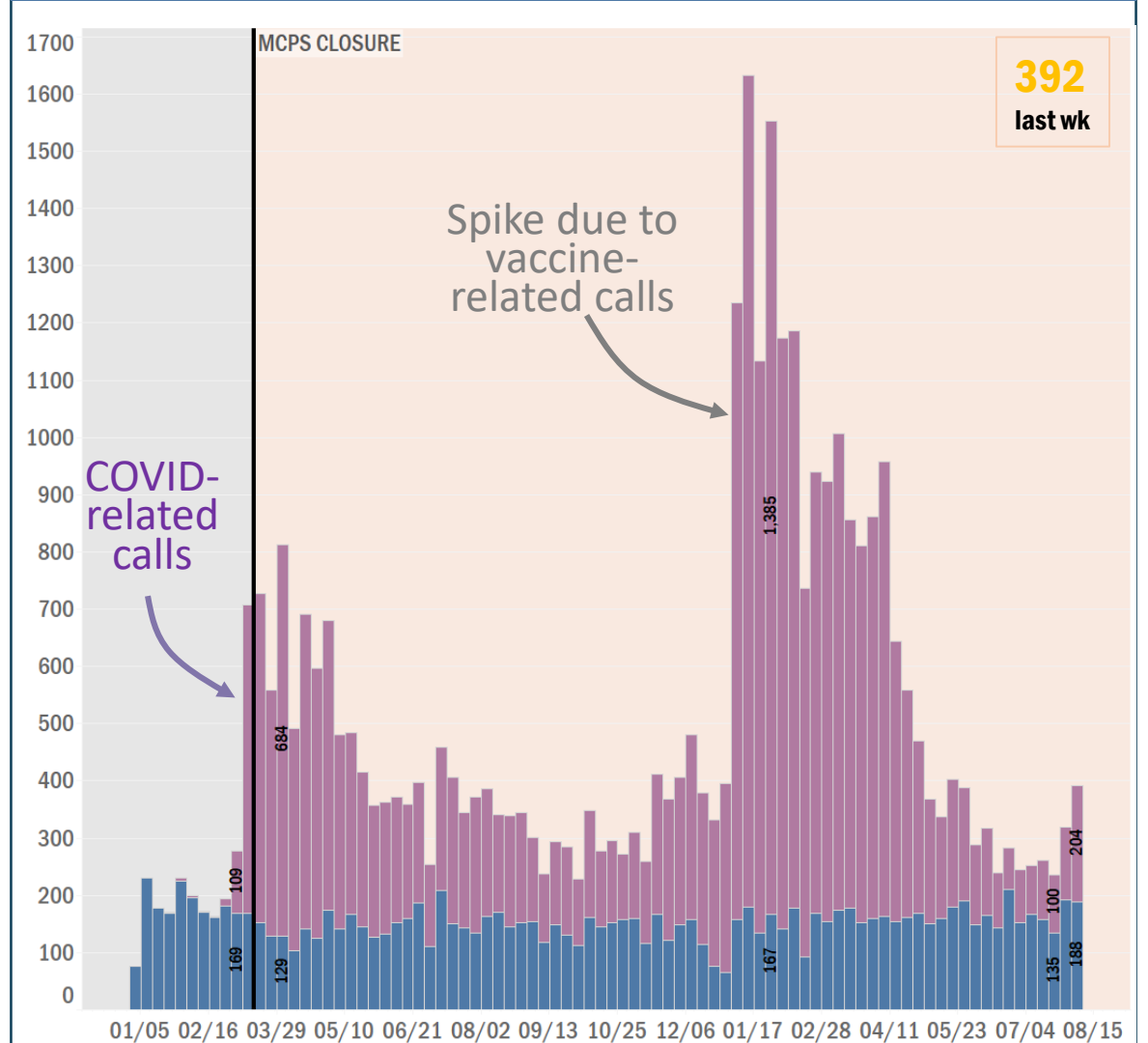


MC311 WEEKLY CALL VOLUME

SERVICES TO END + PREVENT HOMELESSNESS: HIGH VOLUME

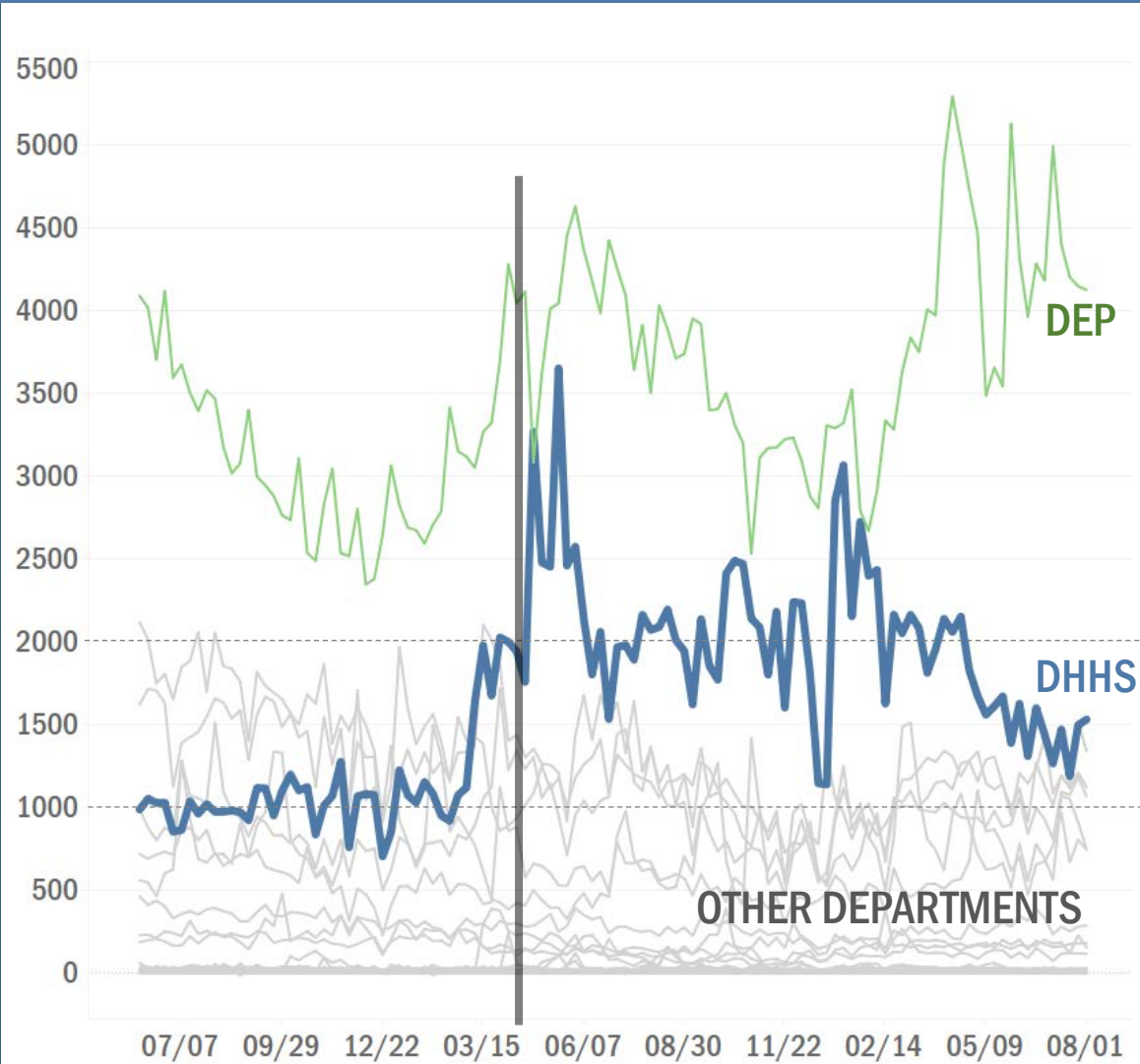


PUBLIC HEALTH CALLS: REVERTING TO PRE-COVID LEVELS

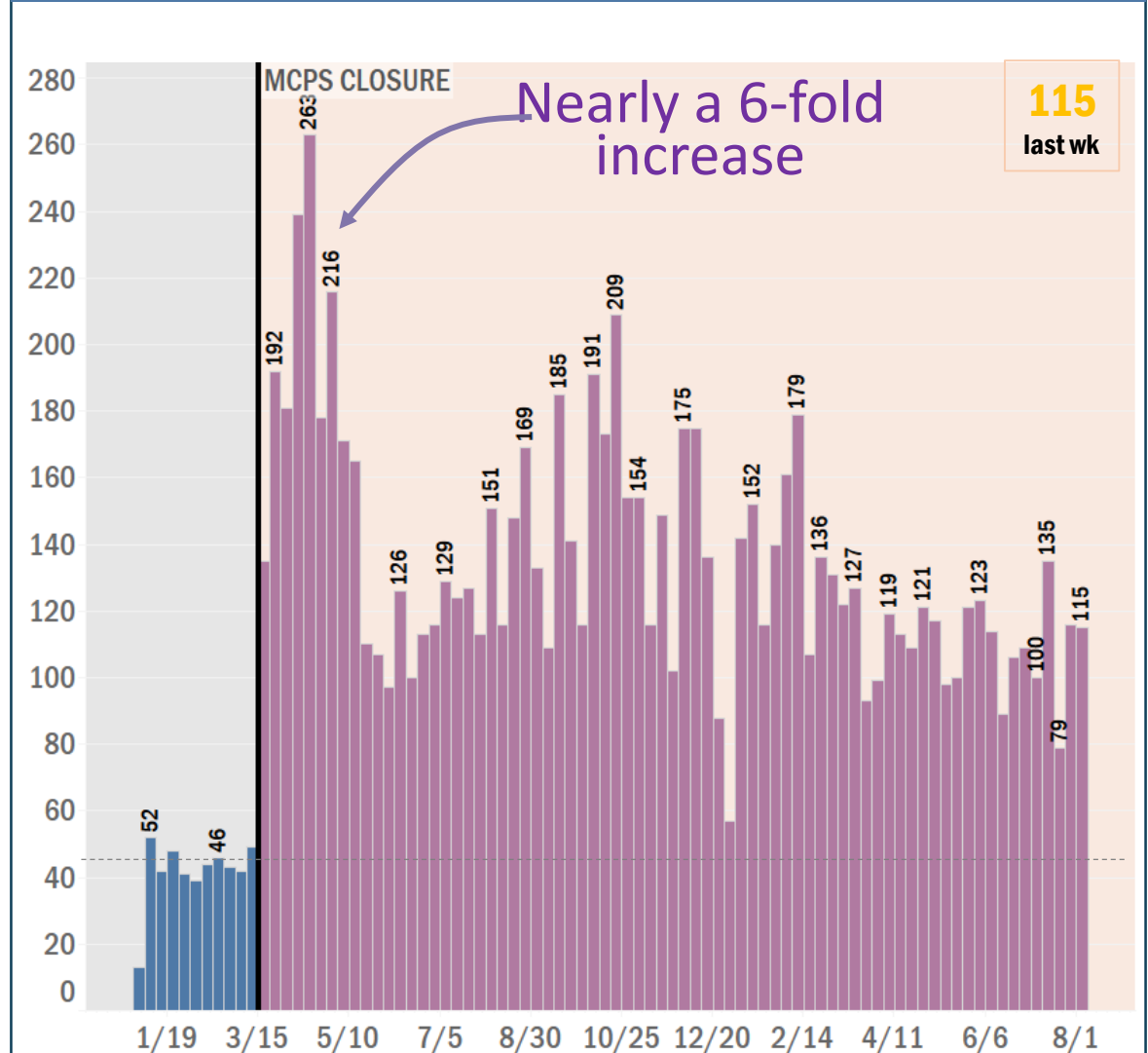


MC311 WEEKLY CALL VOLUME

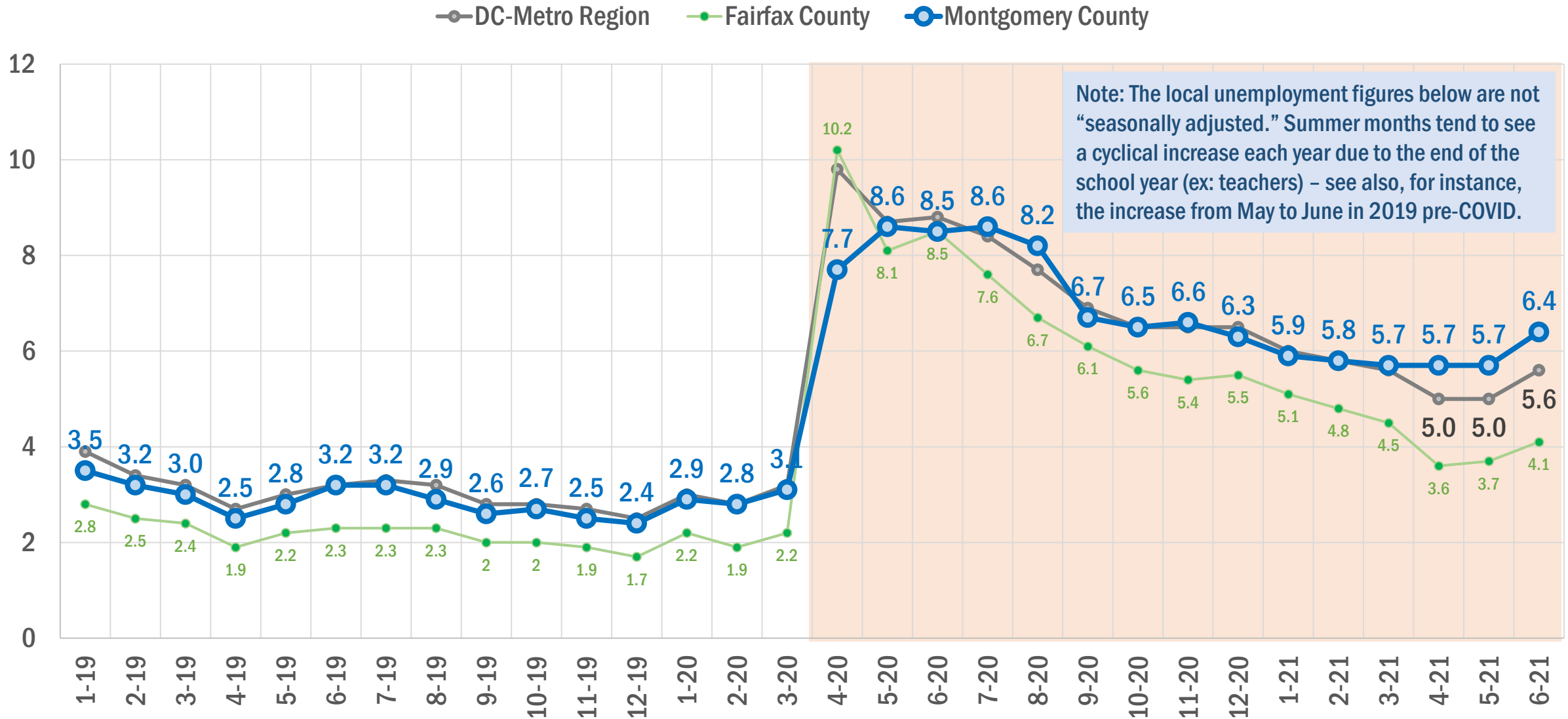
ALL DHHS CALLS (VS. OTHER DEPTS): **1,532** CALLS LAST WK



CALLS FOR APPLYING TO PUBLIC ASSISTANCE PROGRAMS



IMPACT OF COVID-19: UNEMPLOYMENT RATE IN MONTGOMERY COUNTY



Source: Bureau of Labor Statistics. Data through May. Numbers are NOT seasonally adjusted. One-month delay in reporting.

COVID-19 VACCINATIONS

AUG 9 UPDATE

MONTGOMERY COUNTY DHHS



COVID-19 VACCINATIONS: 85% OF ADULTS FULLY VAXED

% OF COUNTY RESIDENTS VACCINATED

AT LEAST 1 DOSE

STATE DATA

70%

740,676

CDC ESTIMATE*

79%

826,427

BOTH DOSES OR SINGLE J&J

STATE DATA

65%

684,259

CDC ESTIMATE*

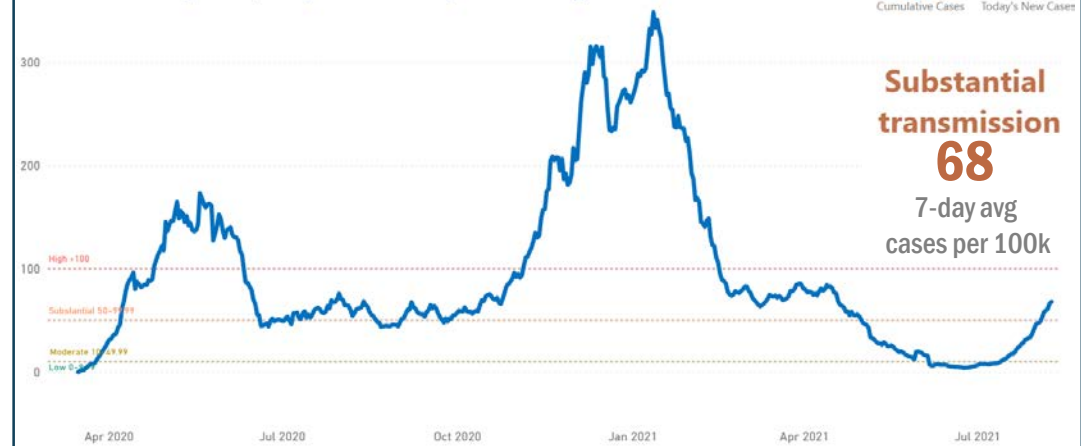
72%

751,085

*CDC estimate includes data on County residents receiving vaccinations in other states and DC.

CONFIRMED COVID CASES PER 100K RESIDENTS

Number of cases per 100,000 persons in the past seven days



% OF COUNTY RESIDENTS VACCINATED BY AGE GROUP (CDC)

■ At least 1 ■ Both Doses or J&J



41,283 children aged 12-15 reported as receiving first dose (65%-76% of total @ 90% confidence).

VAX TYPE FOR VACCINATED COUNTY RESIDENTS (1ST DOSE ONLY)

Pfizer
63%

Moderna
31%

J&J
6%

BENCHMARKING: TOP 10 MD COUNTIES (CDC)

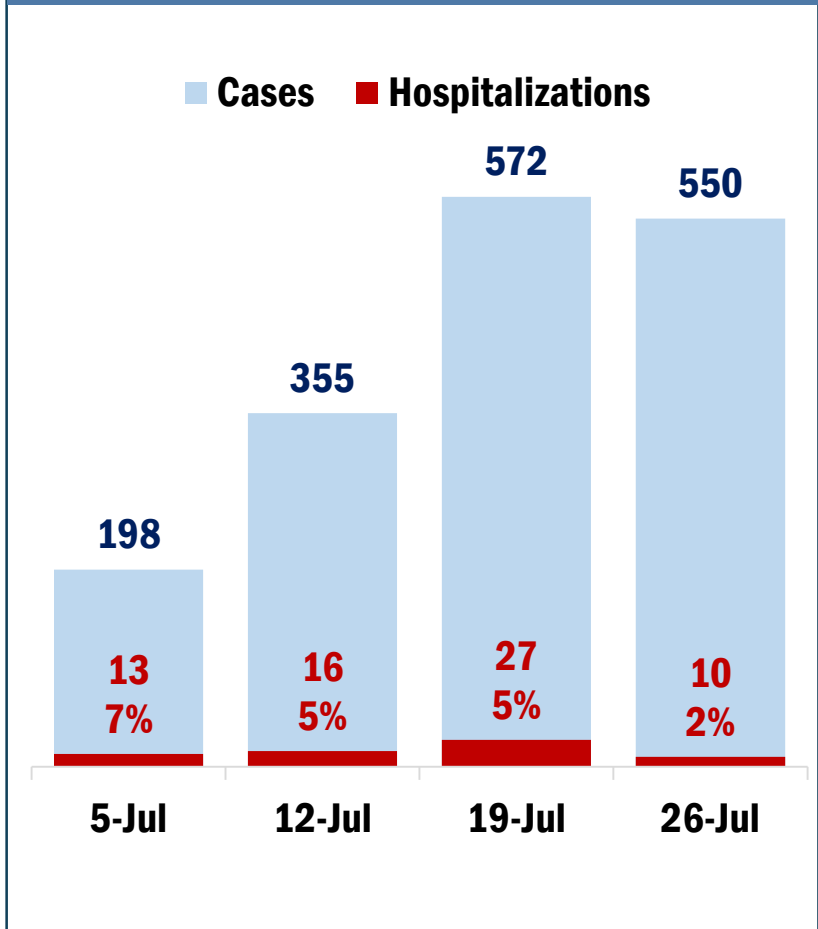
County	% Pop at Least 1 Dose (CDC)	% Pop Fully Vaxed (CDC)	% of 12+ Fully Vaxed (CDC)
Montgomery County	78.7	71.5	84.2
Howard County	75.3	70.0	82.7
Anne Arundel County	67.9	61.9	72.8
Frederick County	66.9	61.4	72.2
Talbot County	67.4	61.9	70.2
Carroll County	64.6	60.1	69.7
Baltimore County	63.2	57.9	67.6
Harford County	62.5	57.5	67.1
Worcester County	64.7	58.4	65.6
Prince George's Co..	62.1	54.5	64.2

CDC ranks Montgomery County #1 nationwide for % of 12+ population fully vaccinated among all US Counties with > 300k residents.

COVID-19 CASES AND HOSPITALIZATIONS: LAST FOUR WEEKS (7.5 to 8.1)

CASES	HOSPITALIZATIONS
1,675	66 (4%) 22 were vaccinated

BY WEEK



BY AGE

Age	Cases	Cases Per 100k	Hosp.	Hospitalizations Per 100k
0 to 9	222	172.5	4	3.1
10 to 19	208	152	2	1.5
20 to 29	350	286.5	7	5.7
30 to 39	291	201.3	13	9
40 to 49	198	139.8	4	2.8
50 to 59	190	133.1	8	5.6
60 to 69	133	109.6	15	12.4
70 to 79	62	86.1	9	12.5
80+	21	51.1	4	9.7

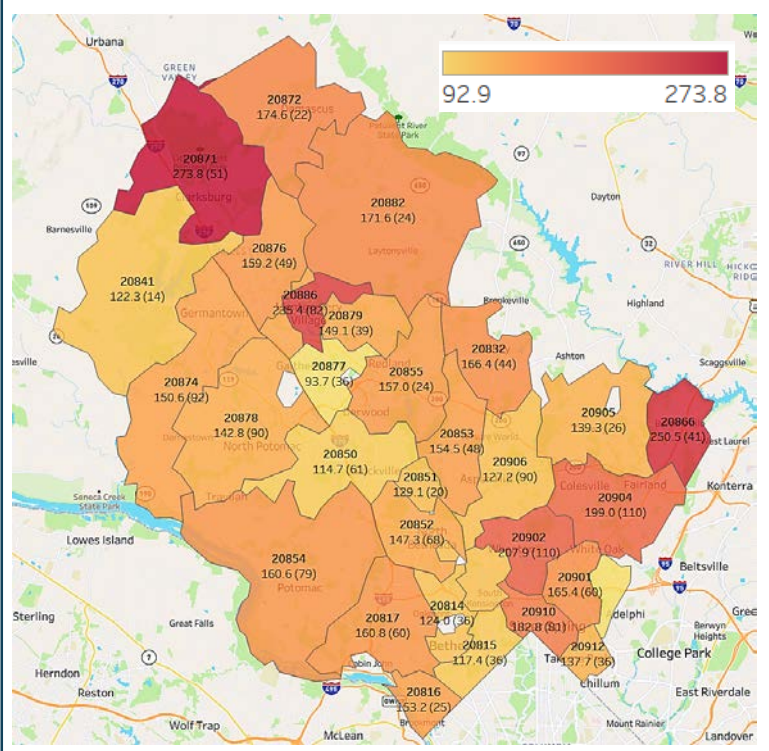
60+ are 13% of cases but 42% of hospitalizations

BY RACE/ETHNICITY

Race	Cases	Cases Per 100k	Hosp.	Hospitalizations Per 100k
NH Black	300	152.8	20	10.2
Hispanic	278	131.9	18	8.5
NH White	551	122.9	17	3.8
NH Asian	40	25.9	1	0.6

18% of cases of unknown race. 13% are of "other" race.

CASES PER 100K



Excludes zip codes with populations under 10,000

HOSPITALIZATIONS BY ZIP CODE (TOP)

Top Zip Codes	Hospitalization
20904 (White Oak)	11
20910 (Silver Spring)	5
20879 (Mont Village)	4
20903 (Hillandale)	4
5 zip codes	3

COVID-19 CASES AND HOSPITALIZATIONS

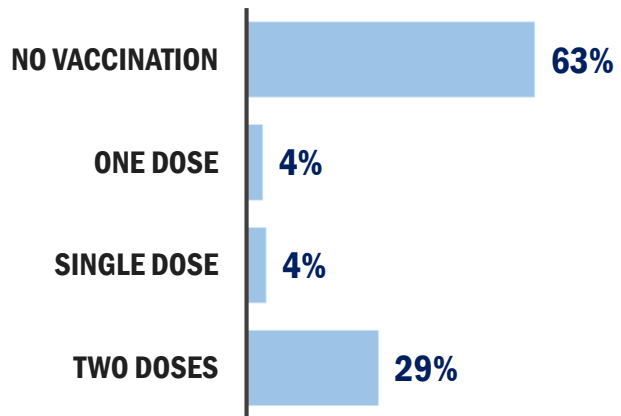
LAST FOUR WEEKS (7.5 to 8.1)

VACCINATED RESIDENTS WITH A BREAKTHROUGH CASE

618

= **0.075%** of vaxed residents (75 in 100,000)

CASES BY VACCINATION STATUS



VACCINATED RESIDENTS HOSPITALIZED FOR C-19

22

= **0.003%** of vaxed residents (3 in 100,000)

60+ account for 73% of the total

Age	Breakthrough Hospitalizations
0 to 9	0
10 to 19	1
20 to 29	0
30 to 39	2
40 to 49	1
50 to 59	2
60 to 69	8
70 to 79	5
80+	3

COVID-19 PATIENTS HOSPITAL UTILIZATION (THROUGH 08/05)

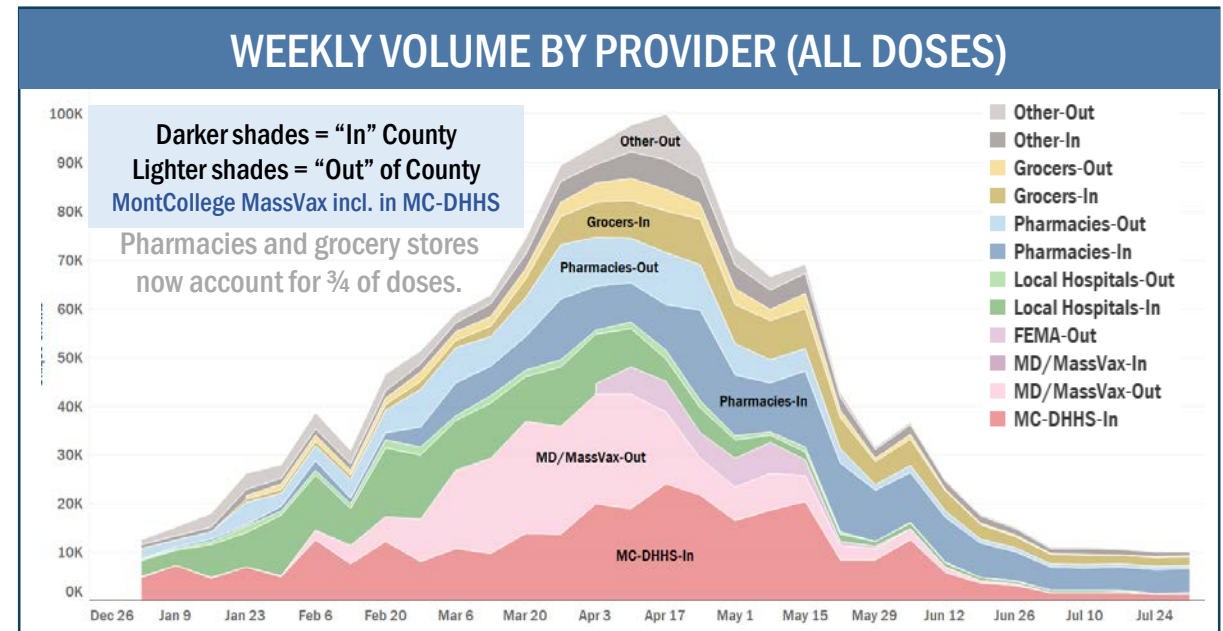
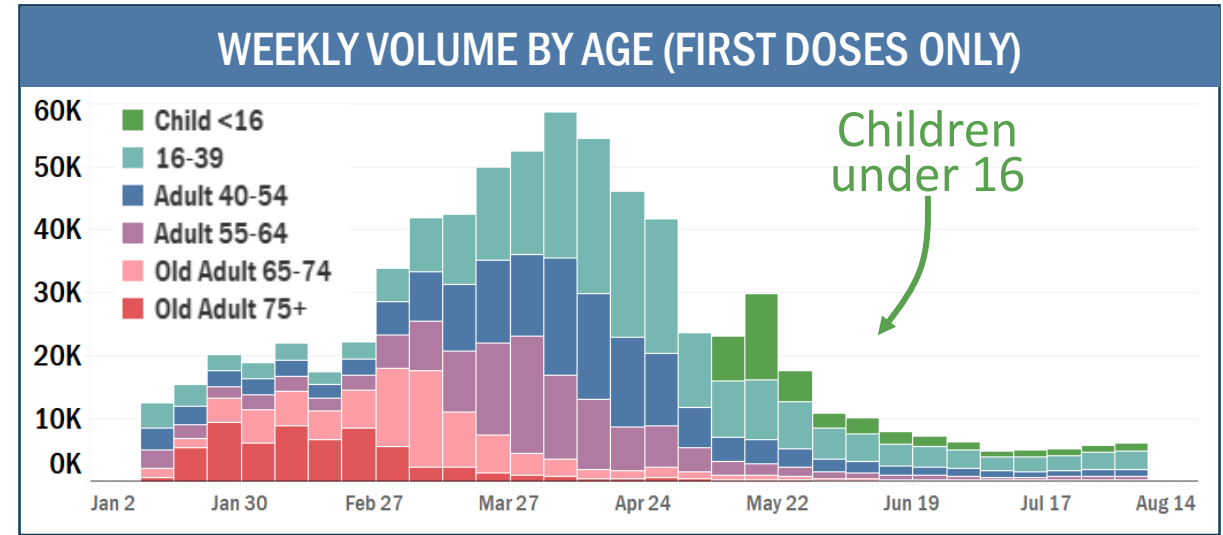
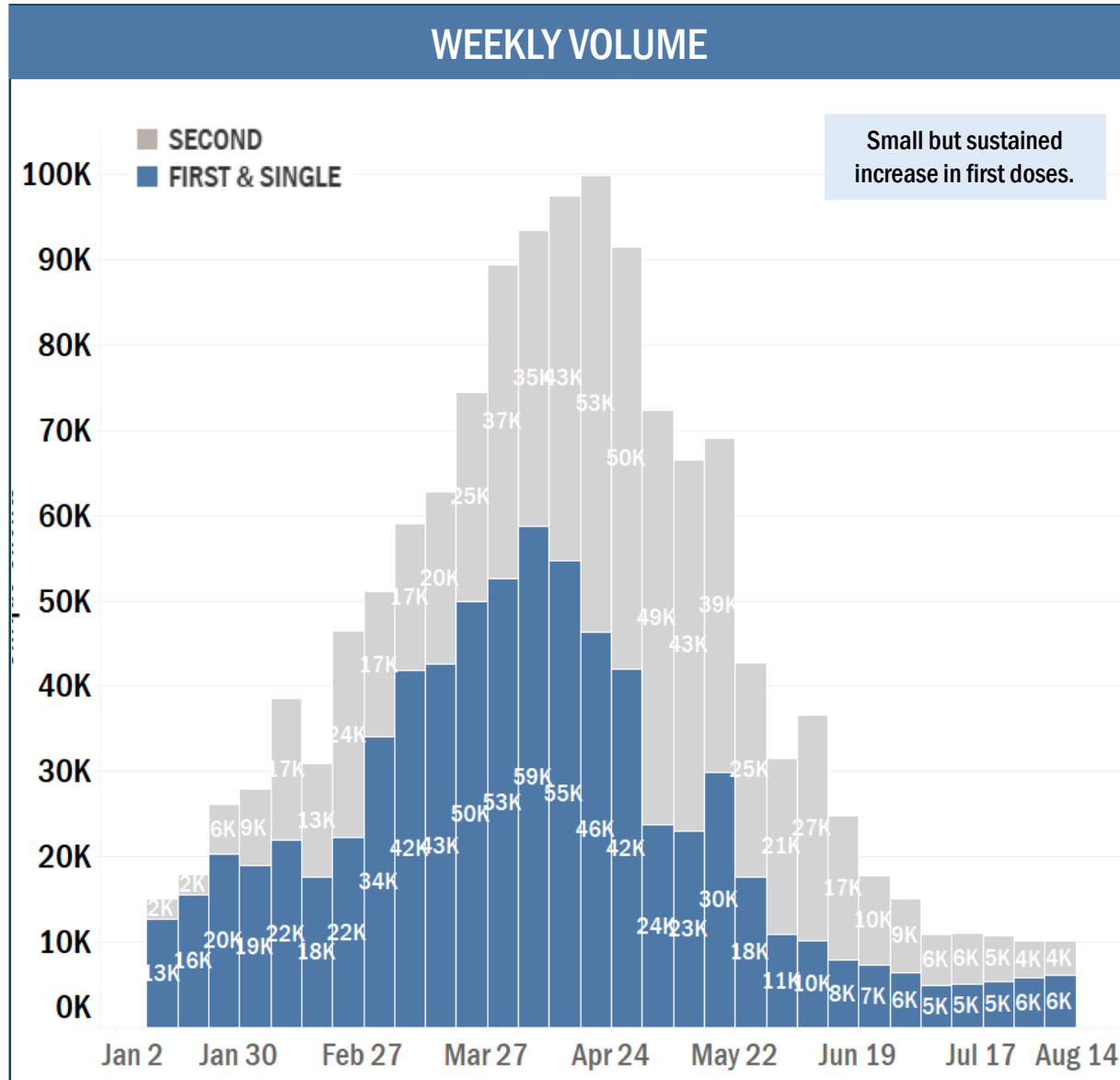
Percentage of hospital inpatient beds in the community that are occupied by patients with COVID-19

40% Beginning on July 1, 2021, the percent of beds occupied by covid patients will be updated on a weekly frequency (Friday).



Vaccinated residents defined above as any resident that has received at least one dose.
Vaccination count based on CDC statistics presented on first slide.

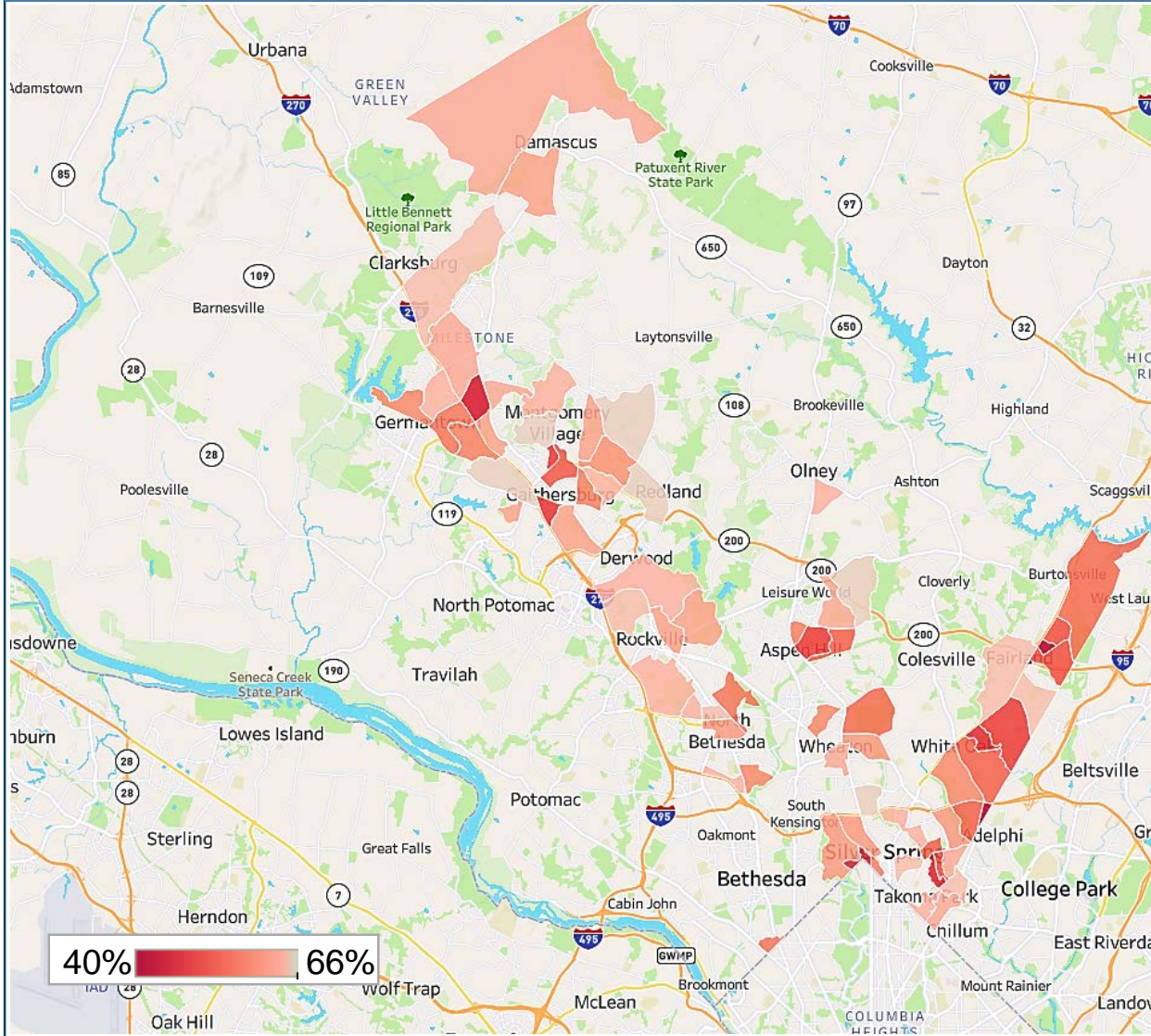
VACCINATION COUNTS: CHANGE OVER TIME AND BY AGE GROUP



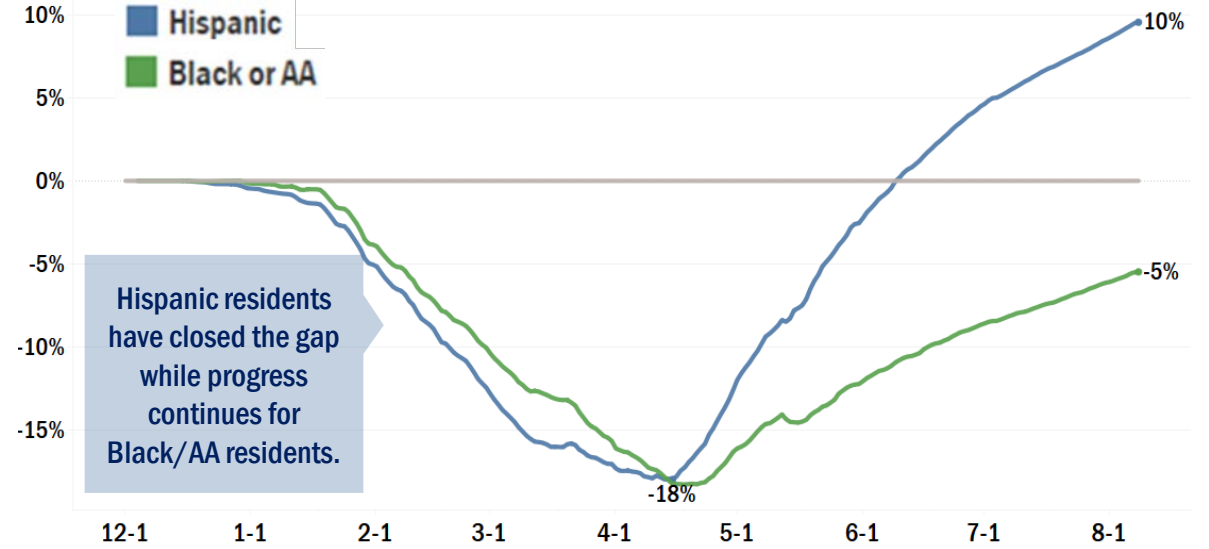
Due to delays between administration and reporting, charts above may not fully reflect all vaccinations conducted during the past 2 days.

VACCINATION GAPS AND DIFFERENTIALS BY GEOGRAPHY AND RACE/ETH

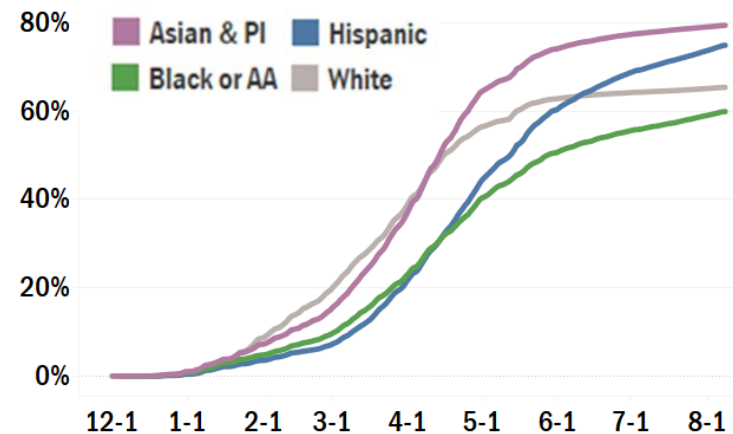
TRACTS WITH BELOW-AVERAGE FIRST DOSE VAX RATES (ALL AGES)



BY RACE/ETHNICITY: VAX GAP RELATIVE TO WHITE NH (12+)



BY RACE/ETHNICITY: FIRST DOSE VACCINATION RATES (12+)



Note: More than 10% of vaccine records do not include complete race/ethnicity data. This chart is therefore based on slightly incomplete data and under-reports the actual vaccinate rate for each group. The reader is therefore encouraged to focus on the relative vs. the absolute rates.

COUNTY GOVERNMENT COORDINATED TESTING AND VACCINATIONS

COVID-19 VACCINATIONS

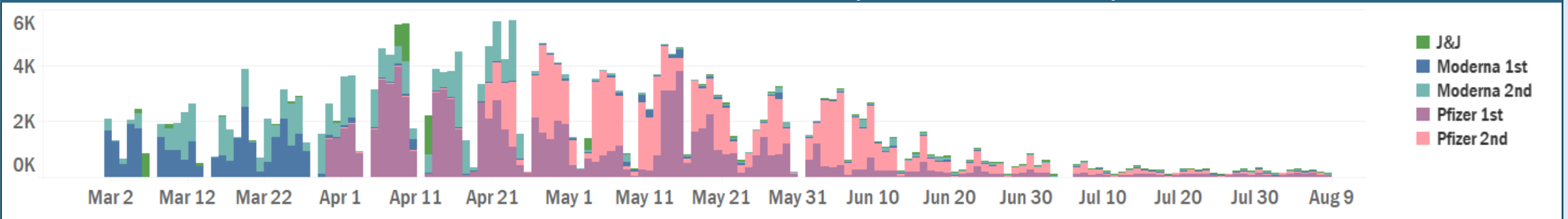
DHHS ADMINISTERED

336,337
ALL TIME

DHHS LAST 7 DAYS

1,582
(965 1st doses)

DAILY TOTALS BY VACCINE TYPE (MARCH - CURRENT)



COVID-19 TESTING

DHHS ADMINISTERED

299,088
ALL TIME

DHHS LAST 7 DAYS

4,322

ALL PROVIDERS

WEEKLY COUNTY TOTALS
one week delay



DHHS ADMINISTERED - WEEKLY TOTALS BY SETTING (MARCH - CURRENT)

