

DHHS PULSE REPORT

COVID-19 IMPACT AND RECOVERY

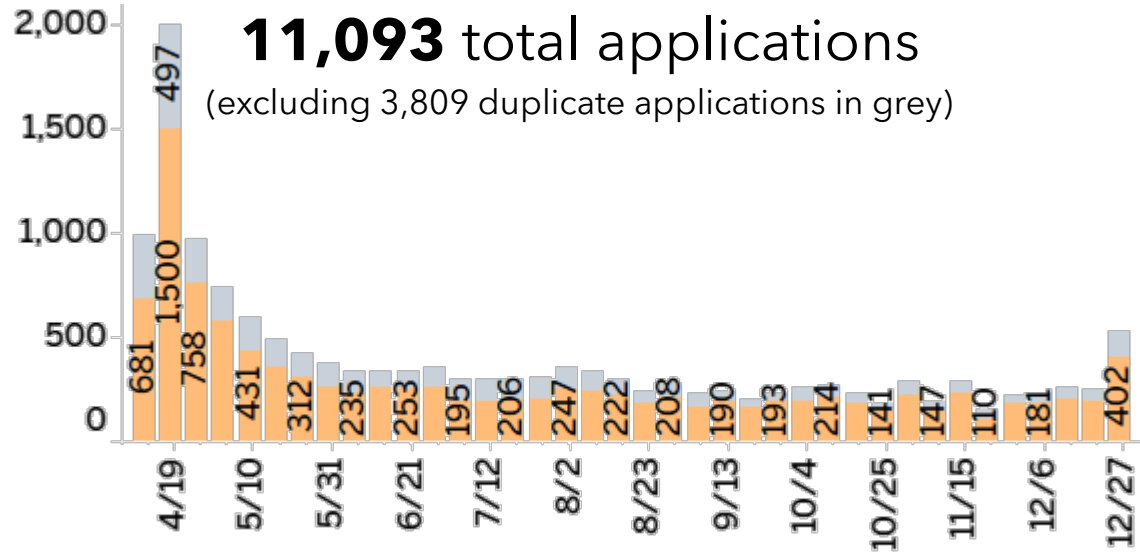
February 23, 2022



RESPONSE: EMERGENCY ASSISTANCE & DEMAND

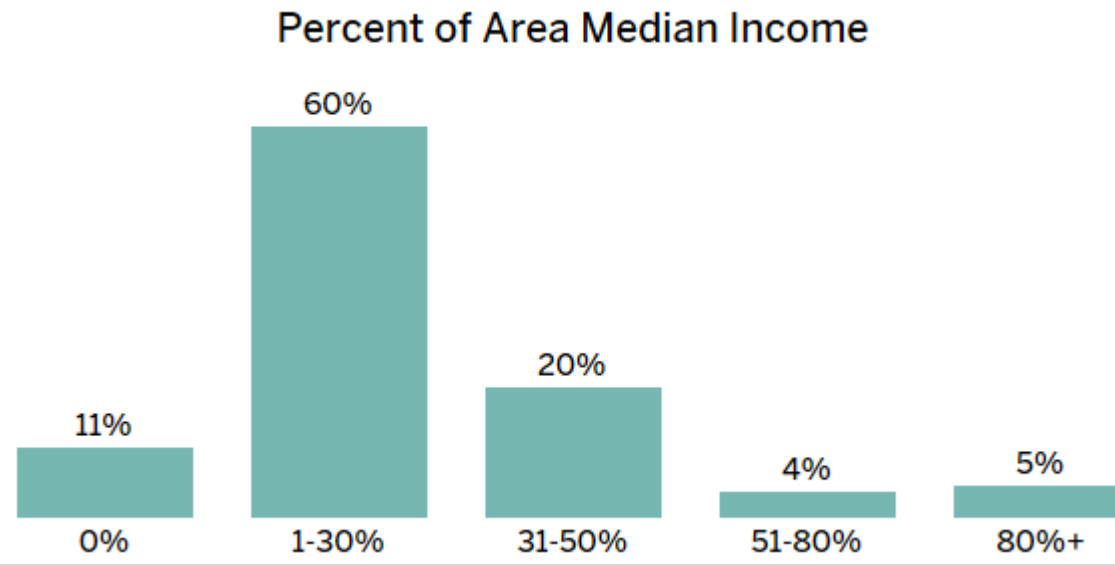
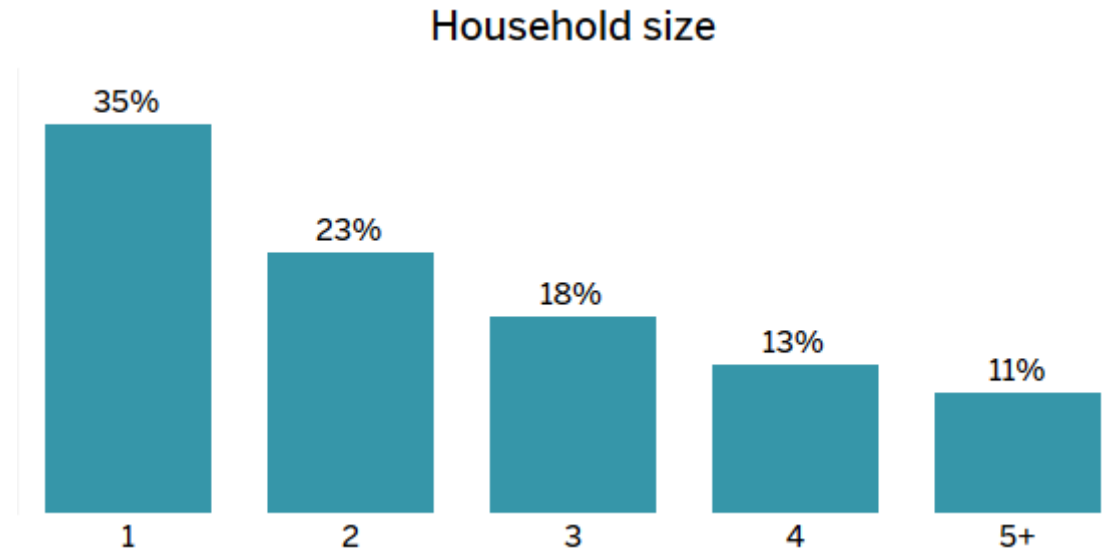
COVID-19 RENTAL RELIEF UPDATE: WEEK OF FEB 14-20

APPLICATIONS BY WEEK (ENDED 12/31)



Application portal closed on 12/31/21.

APPLICANT HOUSEHOLD CHARACTERISTICS

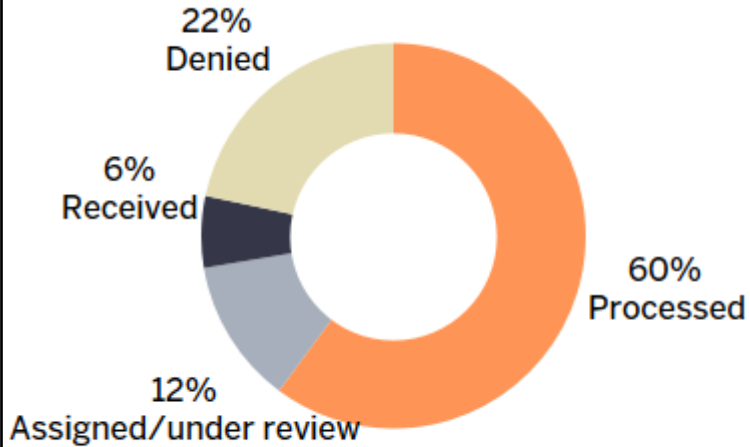


APPLICANT CHARACTERISTICS

- **52%** matched with landlord application
- **53%** unemployed past 90 days
- **29%** needed to care for self/others
- **23%** self-reported receiving an eviction notice
- Median household income: **\$20,926**

COVID-19 RENTAL RELIEF UPDATE: WEEK OF FEB 14-20

APPLICATION PROCESSING



May not add to 100% due to rounding.

Denials are primarily due to applicants not having arrears/mortgage assistance requests, exceeding income requirements, not demonstrating county residency, and include non-responsive and fraudulent requests.

ALL-TIME TOTALS

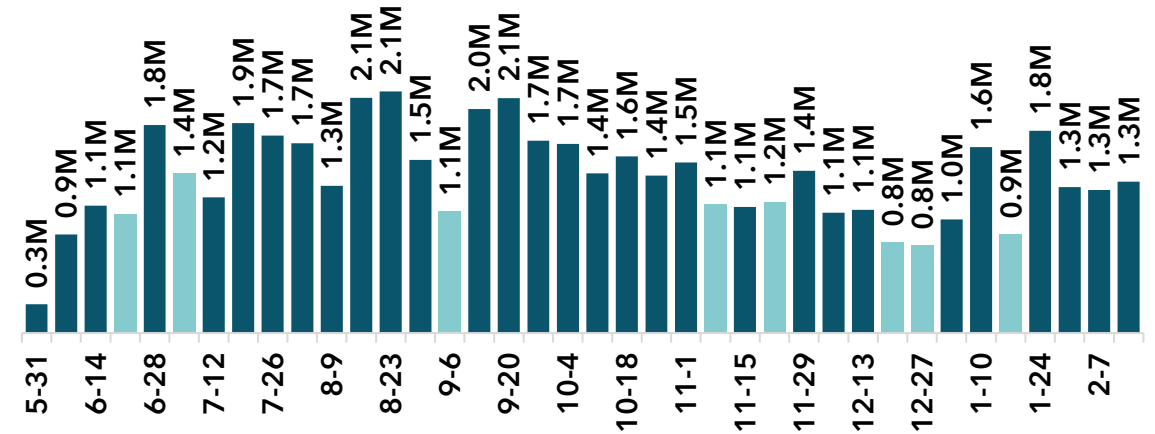
The current round of funding adds to two previous rounds of COVID-19 assistance. In total, the Emergency Rental Assistance Program has approved:

- **\$70.1M** in payments
- **9,640** households

APPROVALS

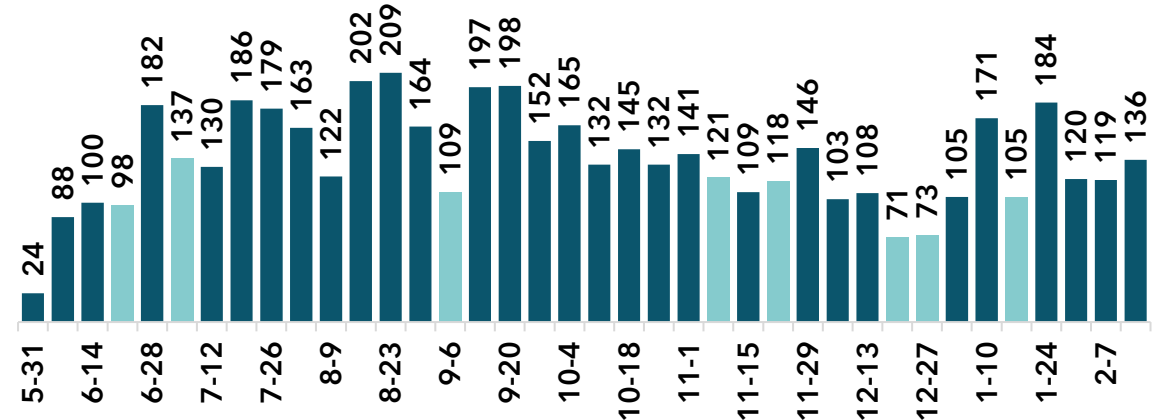
Total Approved Payments: \$52.2M

(4-day workweek in light blue)



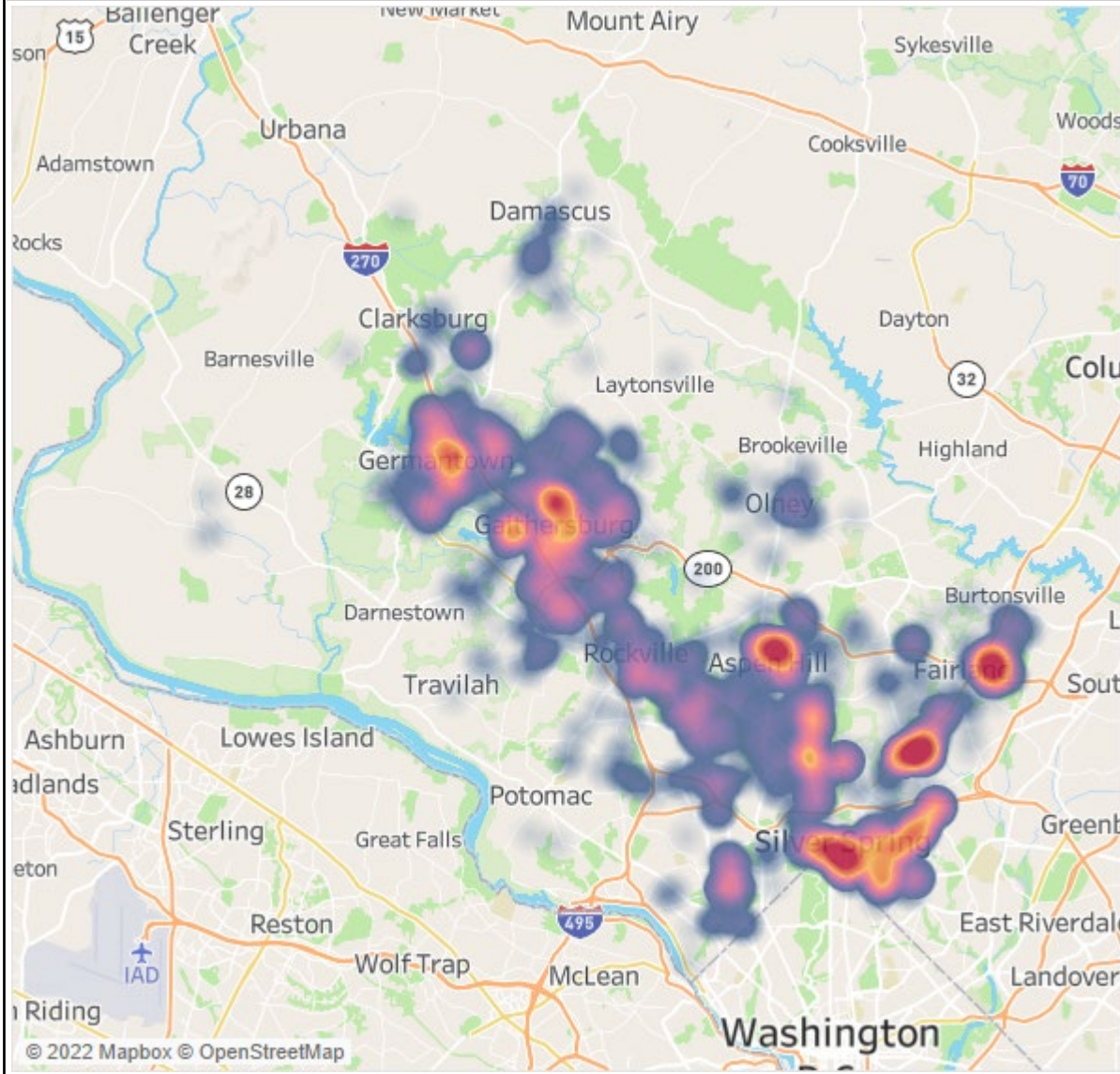
Total Approved Households: 5,144

(4-day workweek in light blue)

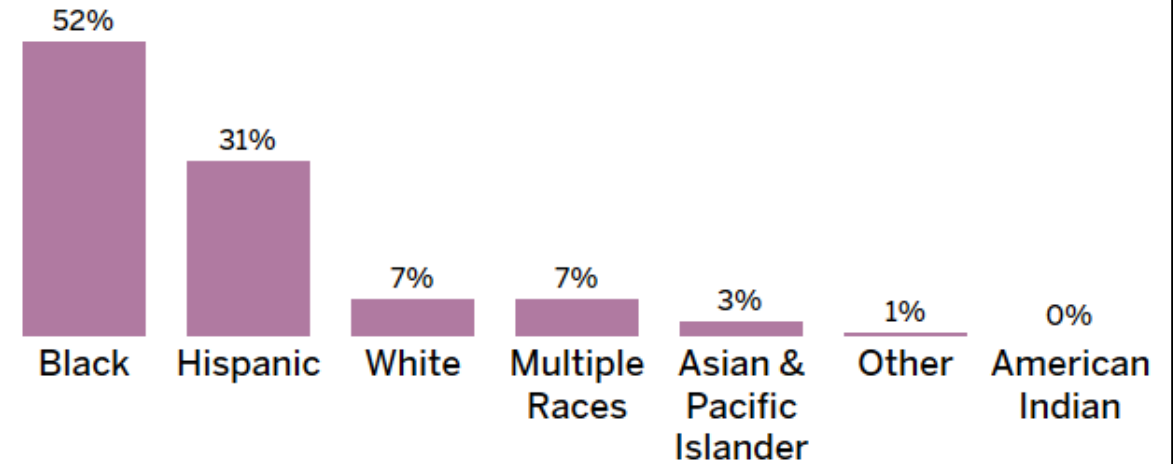


COVID-19 RENTAL RELIEF UPDATE: WEEK OF FEB 14-20

HEATMAP OF RECIPIENT HOUSEHOLDS



RECIPIENT RACE/ETHNICITY



ADDITIONAL RECIPIENT CHARACTERISTICS

- Average client payment: **\$10.1K**
- **64%** of payments arrears; **36%** prospective
- **47%** of awarded households are in high-need areas as defined by the Homeless Prevention Index

COVID-19 RENTAL RELIEF UPDATE: WEEK OF FEB 14-20

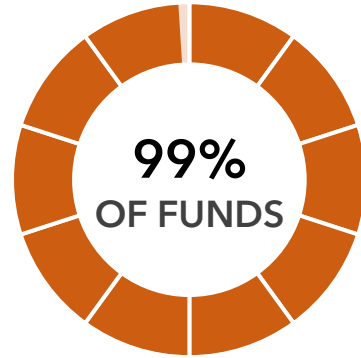
DIRECT ERAP EXPENDITURES

Award

\$31.4M

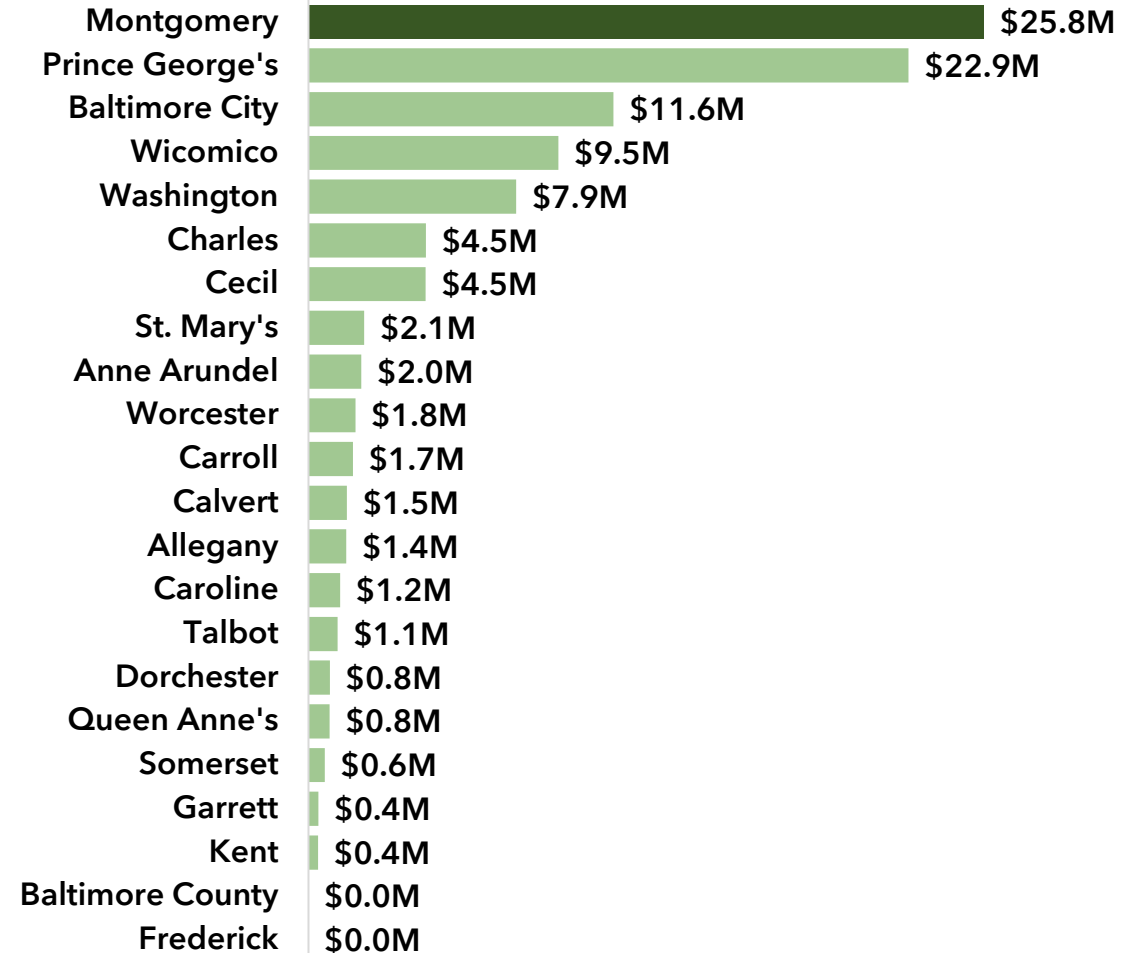
Current spending and
encumbered

\$31.4M



STATE EXPENDITURES BY COUNTY

As of 12.31.2021



STATE ERAP EXPENDITURES

Award

\$28.1M

Current spending and
encumbered

\$28.1M

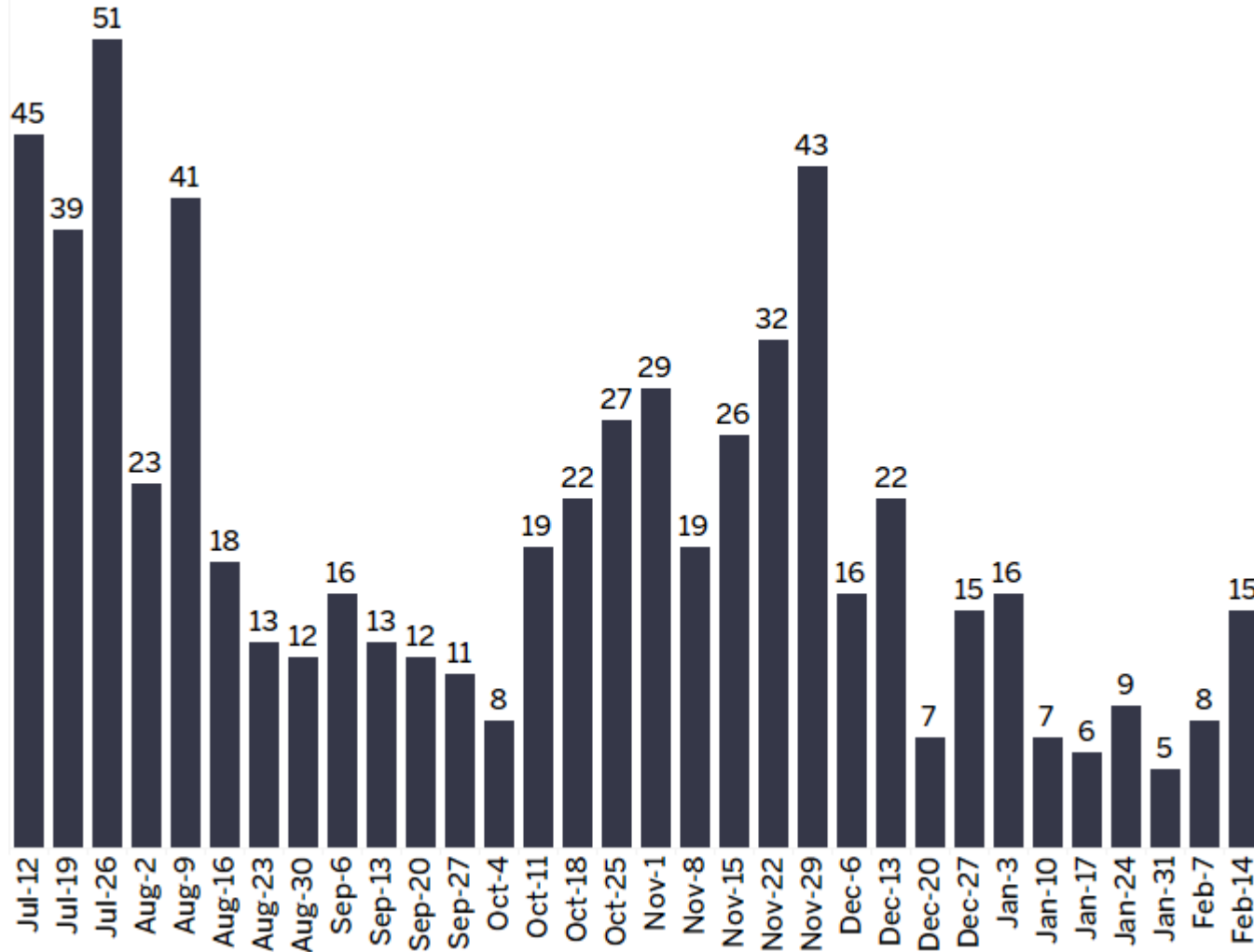


Note: Spending and percentages may shift as payments are reconciled.

Source: Maryland Department of Housing and Community Development, <https://bit.ly/3DQSVZY>

EVICTIION TRACKER

NEW WRITS BY WEEK

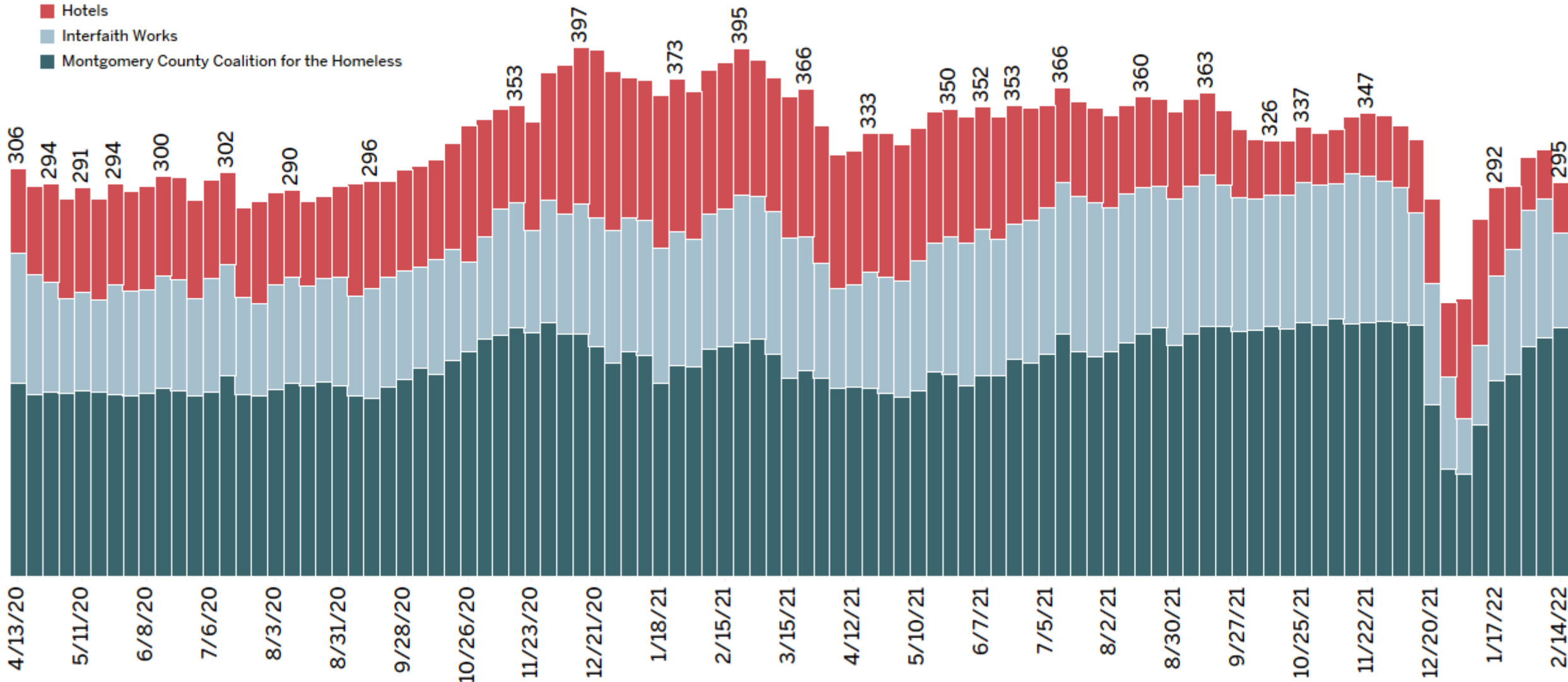


- **925** residents scheduled for eviction after July 19
- **46%** of households with writ have applied for emergency rental assistance
- Context: **fewer than 8%** of writs typically result in eviction

NOTE: Records on writs for eviction can include commercial tenants as well as multiple notices for a single household. The stats above attempt to capture unique residential households only, but it is not always possible to make such distinctions.

SHELTER OCCUPANCY

Average Daily Shelter Occupancy by Week

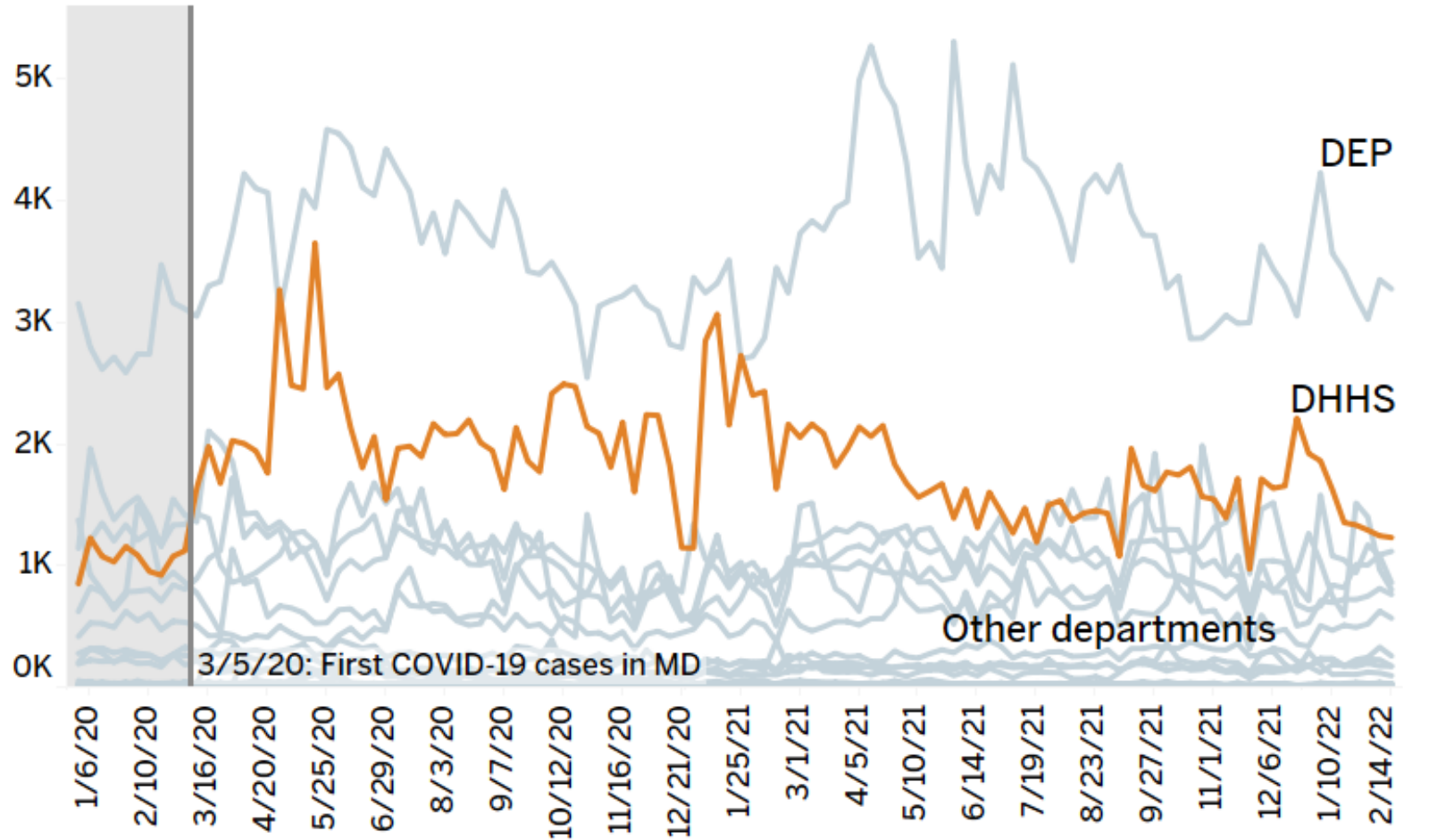


NOTE: Total occupancy does not include hotels providing shelter to those who are in quarantine or isolation.

MC311 WEEKLY CALL VOLUME: DHHS

WEEKLY CALLS BY DEPARTMENT

1,230 calls last week for DHHS services



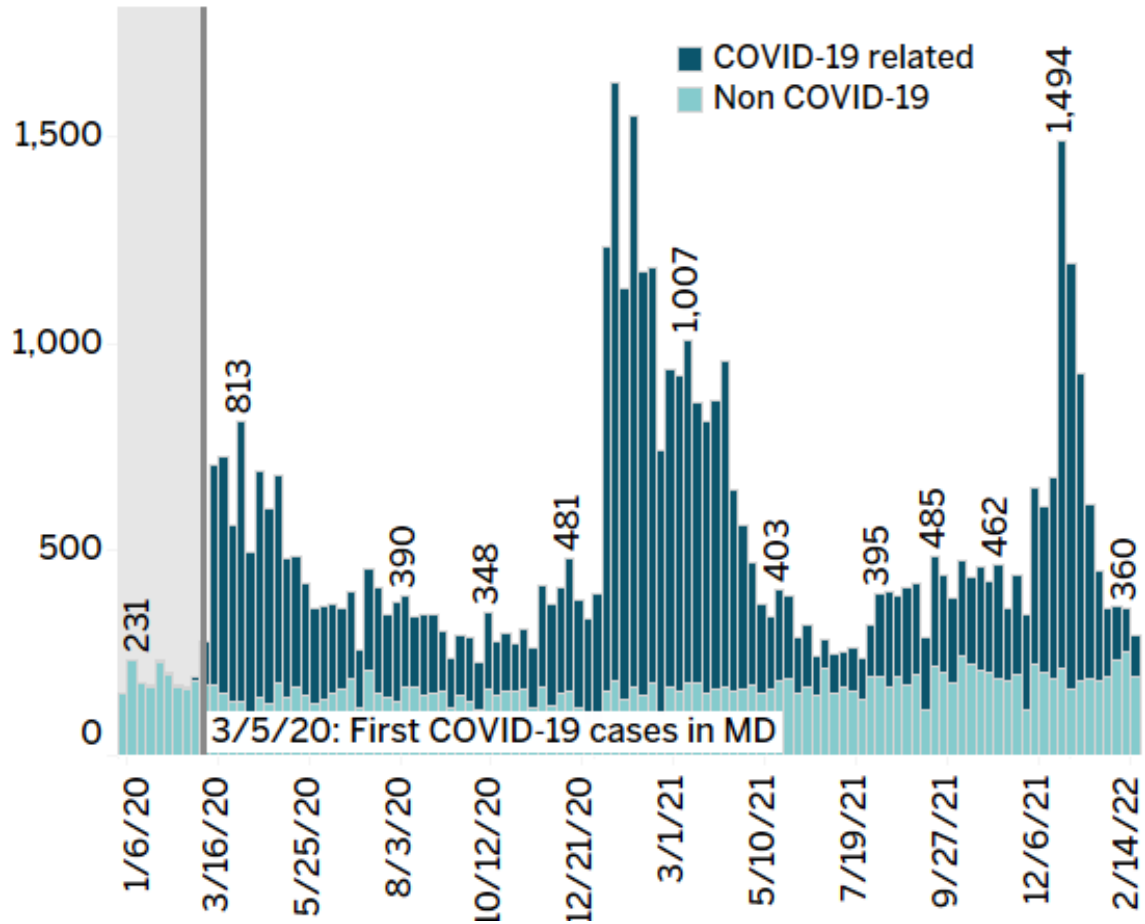
- Nearly 33% of last week's DHHS service calls were regarding public assistance programs
- Most questions regarding public assistance are referred to the Office of Eligibility and Support Services, which in January fielded 1,649 direct calls and 1,719 referrals from MC311
- 13% of DHHS calls to MC311 were about the COVID Rental Relief Program

MC311 WEEKLY CALL VOLUME: DHHS

PUBLIC HEALTH

294 calls last week for Public Health

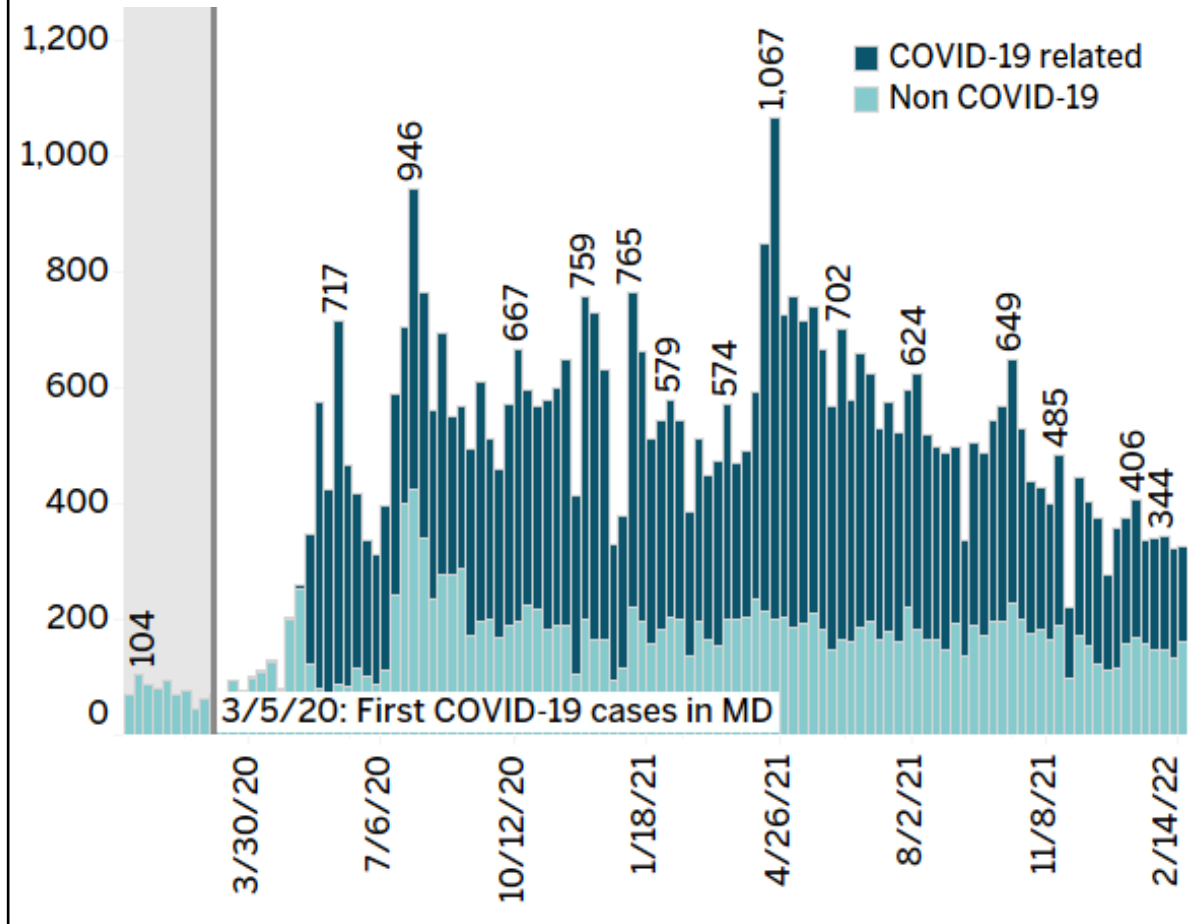
35% related to COVID-19



SERVICES TO END & PREVENT HOMELESSNESS

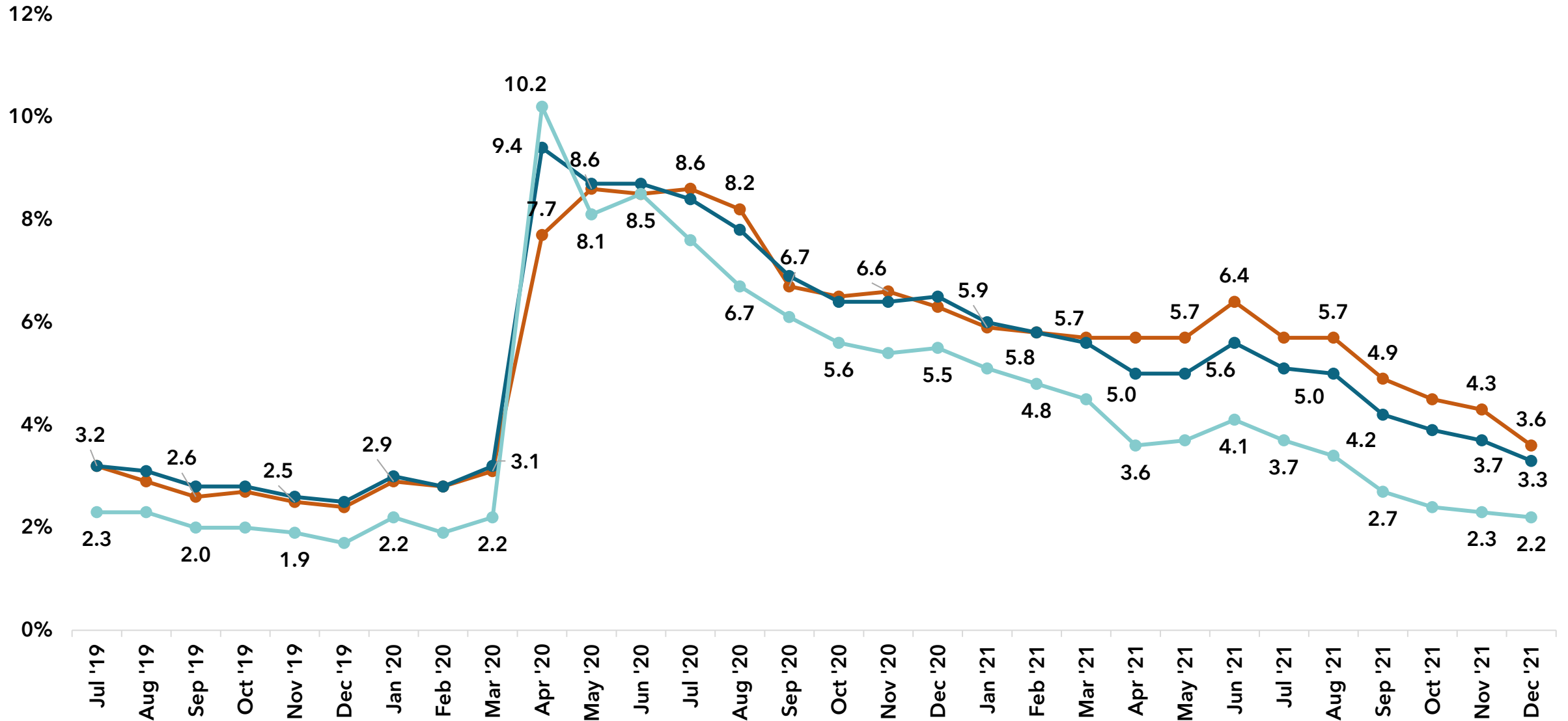
327 calls last week for SEPH

50% related to COVID-19



UNEMPLOYMENT RATES IN THE REGION

—●— Montgomery County —●— DC-Metro Region —●— Fairfax County



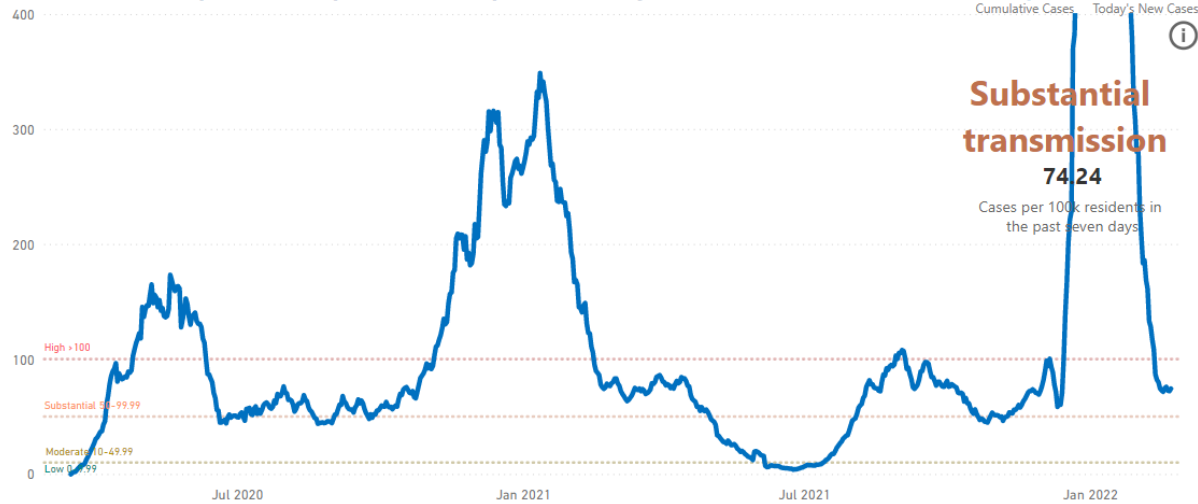
COVID-19 CASES, VACCINATIONS, & TESTING



COVID-19 CASES & POSITIVITY RATE

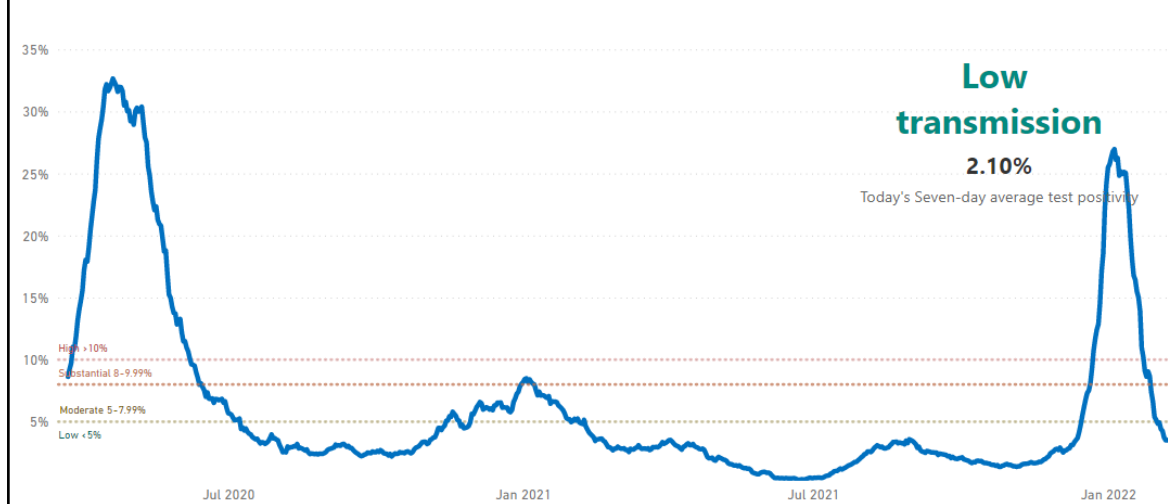
CASES AS OF 2/22/22*

Number of cases per 100,000 persons in the past seven days



POSITIVITY RATE AS OF 2/21/22

Seven-day average percentage of tests administered resulting in a positive case



*Cases may be underreported to some extent due to the increased use of self-test home kits.

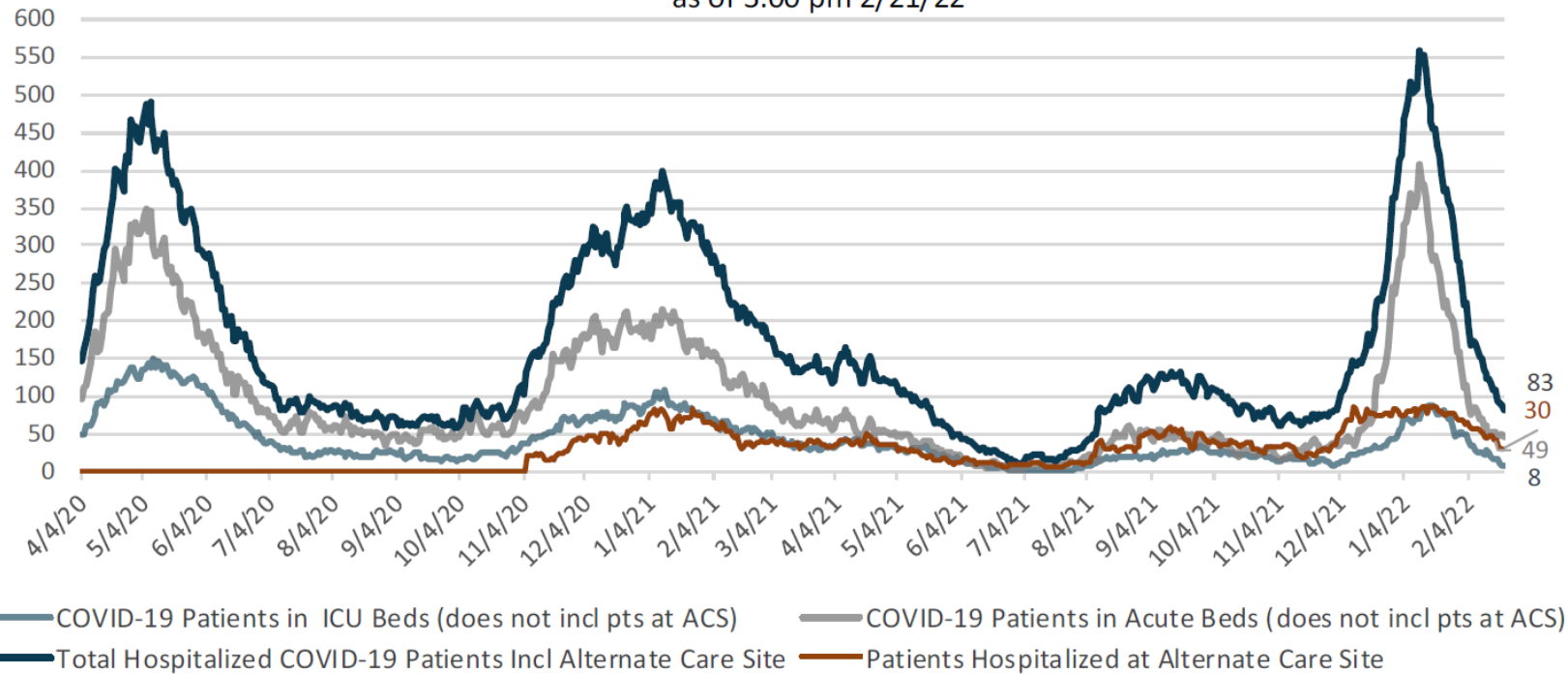
For real-time updates, visit the COVID-19 Surveillance Dashboard: <https://www.montgomerycountymd.gov/covid19/data/>

COVID-19 HOSPITALIZATIONS

Total ICU and Acute Beds Occupied by COVID-19 Positive Patients

(Montgomery County Hospitals and the WAH Alternate Care Site)

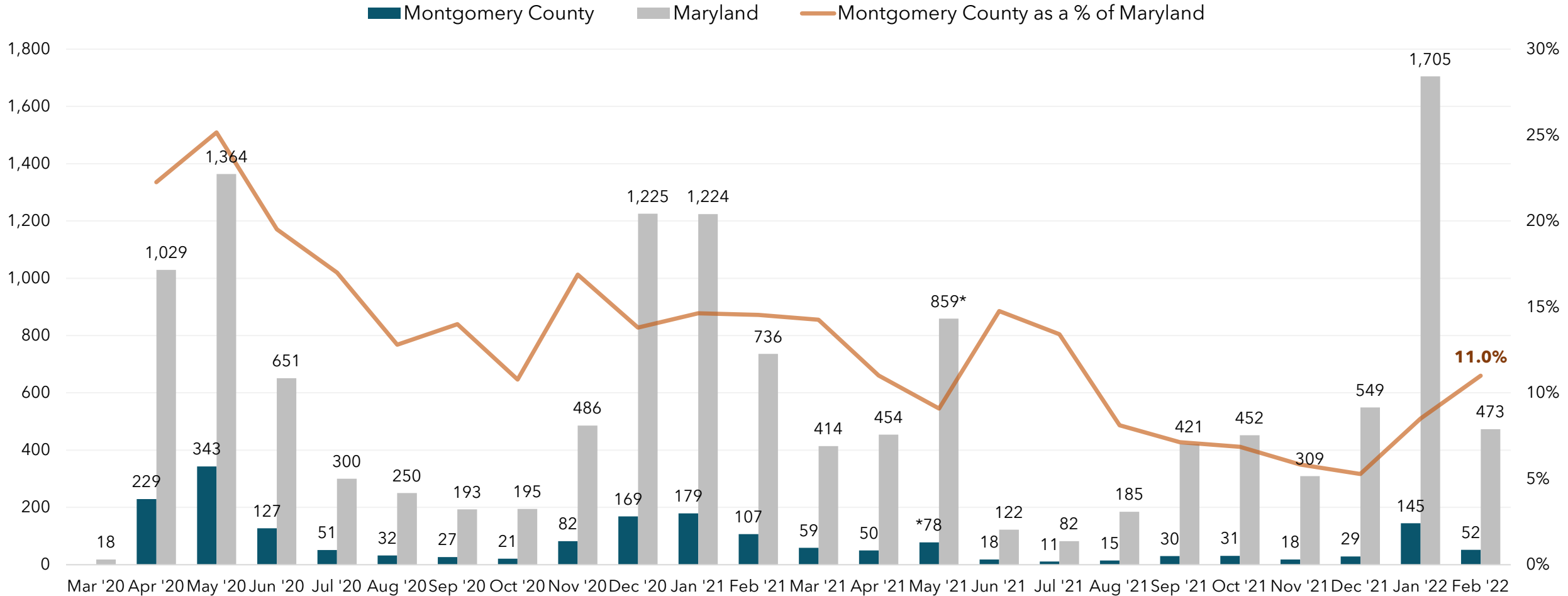
as of 3:00 pm 2/21/22



- There are 83 hospitalized COVID-19 patients as of 2/21. Both acute care and ICU bed usage has declined.
- 5.2% of hospital beds in the community are occupied by patients with a COVID diagnosis (as of 2/23).
- 30 patients are currently hospitalized at the alternate care site. These patients are transfers from other hospitals and may come from other jurisdictions.

COVID-19 DEATHS

Monthly COVID-19 Deaths
Updated 2/21/22

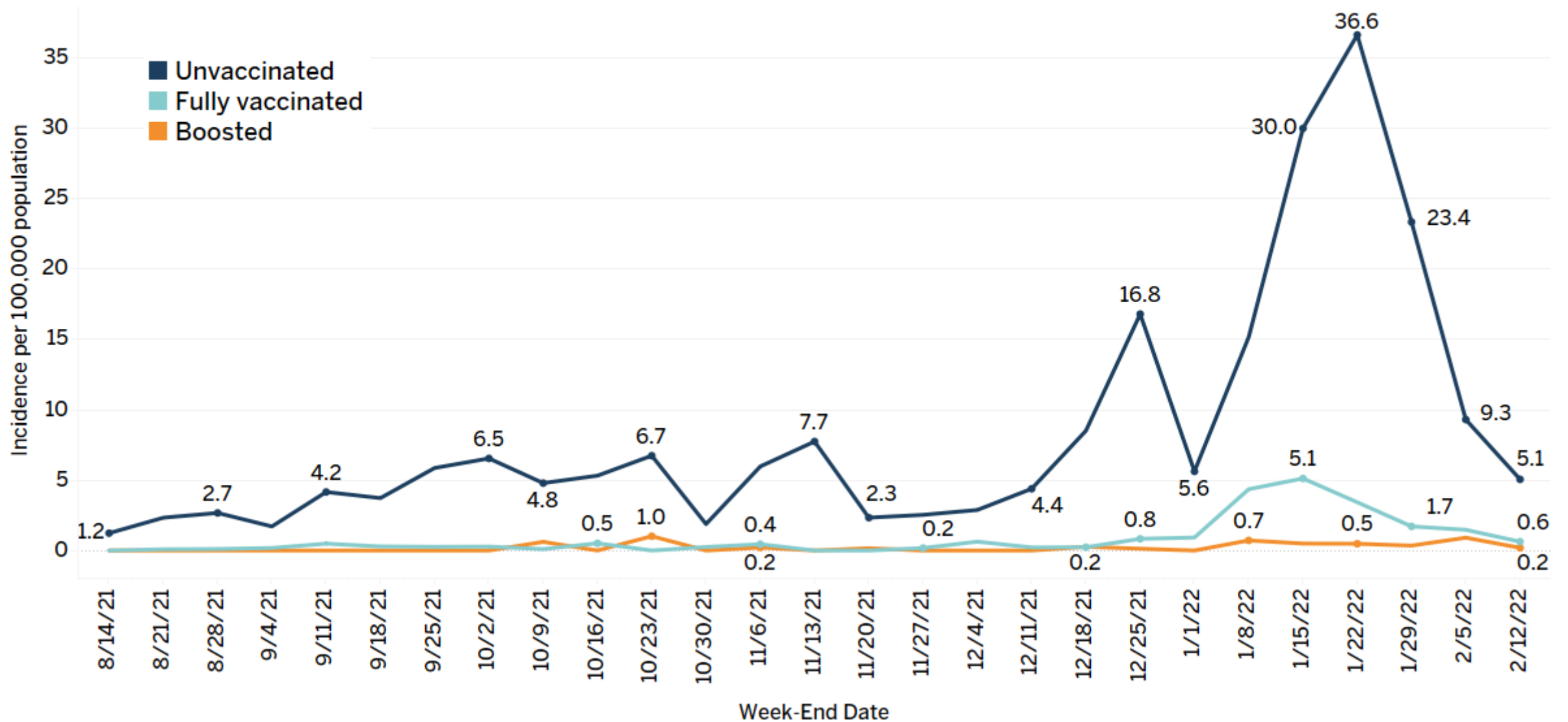


*VSA revised death data on May 27, 2021 to include COVID-19 deaths not previously counted.

NOTE: Monthly totals are based on the date death was reported, which may not be the same as the date on which the death occurred.

COVID-19 WEEKLY DEATH RATE BY VACCINATION STATUS

Weekly Age-Adjusted COVID-19 Death Rates by Vaccination Status
Montgomery County, MD
Updated 2/17/22



COVID-19 VACCINATIONS: TOTALS FROM CDC

TOTAL VACCINATIONS (AS OF 2/19/22)

- **≥95%¹** of total population received at least **ONE DOSE** [N=1,051,442]
- **85%²** of total population received at least **TWO DOSES** (fully vaccinated) [N=894,607]
- **52%** of fully vaccinated population received a **BOOSTER/ADDITIONAL DOSE** [N=462,735]

1. The CDC caps percentages at 95% to account for margins of error in data entry and population estimates.
2. On 1/19 the CDC revised its method for counting vaccines administered at Bureau of Prisons and at Department of Defense facilities to better align vaccine counts with residential county of recipient instead of county where vaccine was administered. This revision has decreased the vaccine county for Montgomery County.

NOTE: The CDC vaccination count includes Montgomery County residents who received their shots in Maryland or outside the state. It also includes vaccinations administered in some federal entities within Montgomery County.

VACCINATIONS BY AGE GROUP

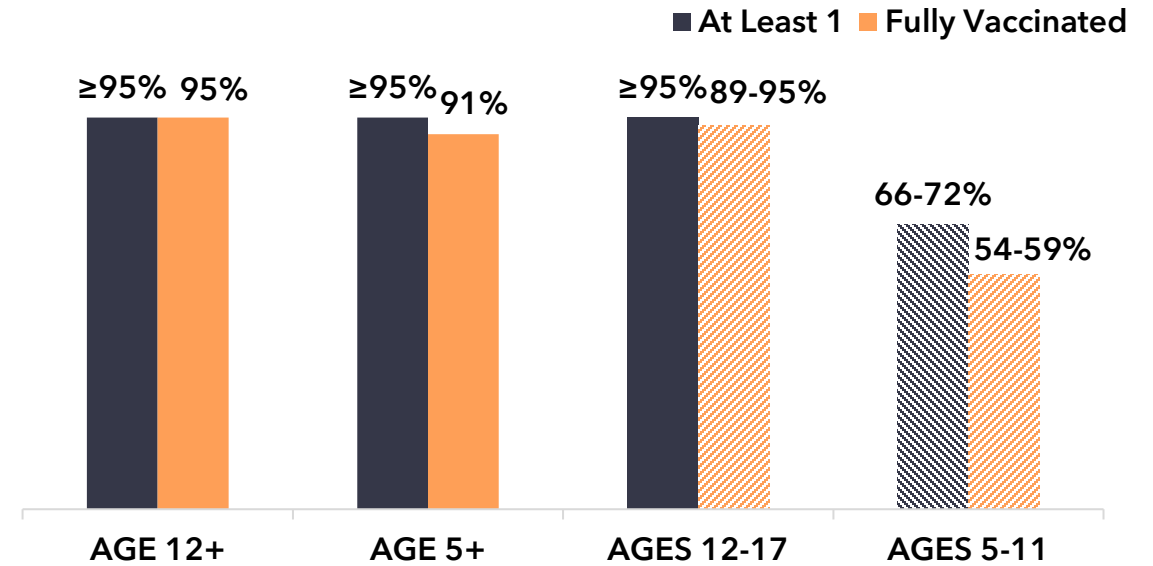


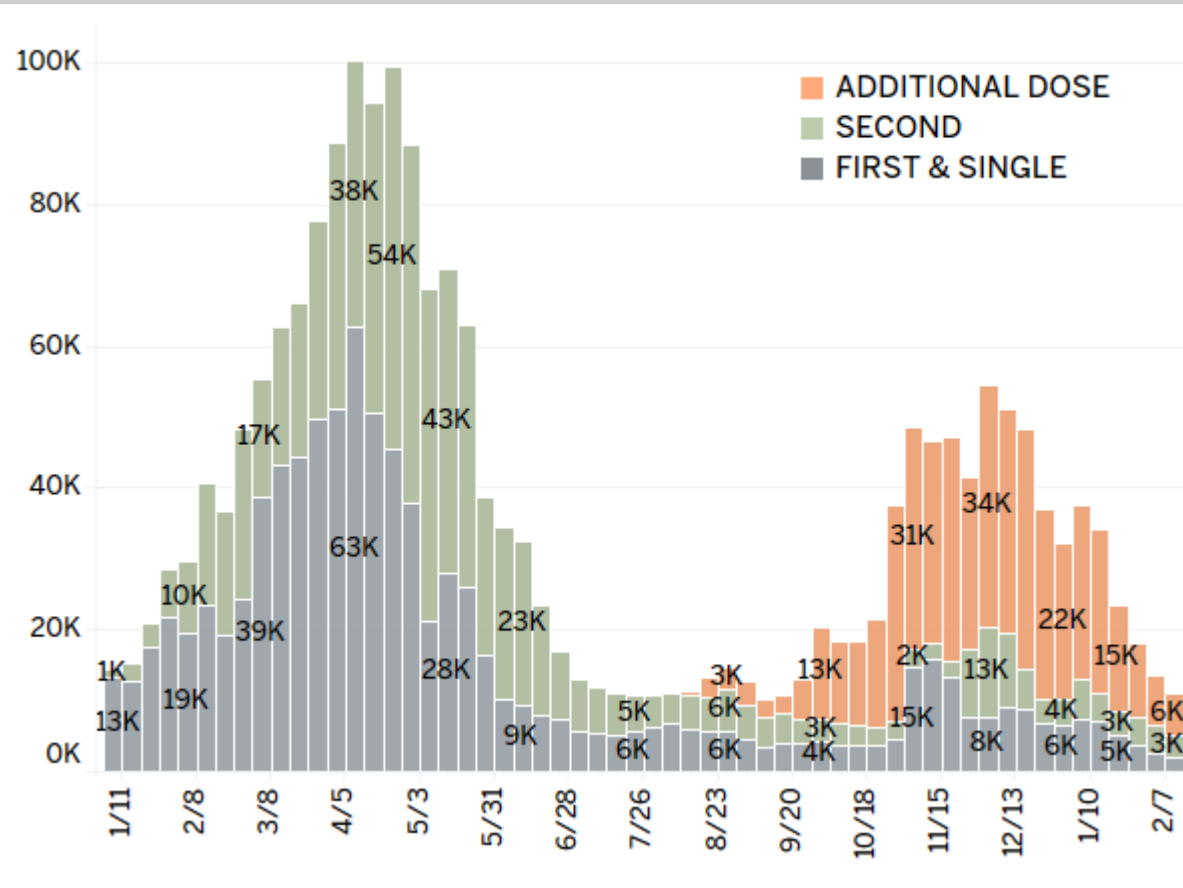
Chart reflects percent of total age group population that received doses. Percentage estimates are reflected as ranges for ages 12-17 and ages 5-11 due to higher margins of error.

- **57%** of the fully vaccinated 18+ population received a **BOOSTER/ADDITIONAL DOSE** [N=435,216]
- **75%** of the fully vaccinated 65+ population received a **BOOSTER/ADDITIONAL DOSE** [N=124,268]

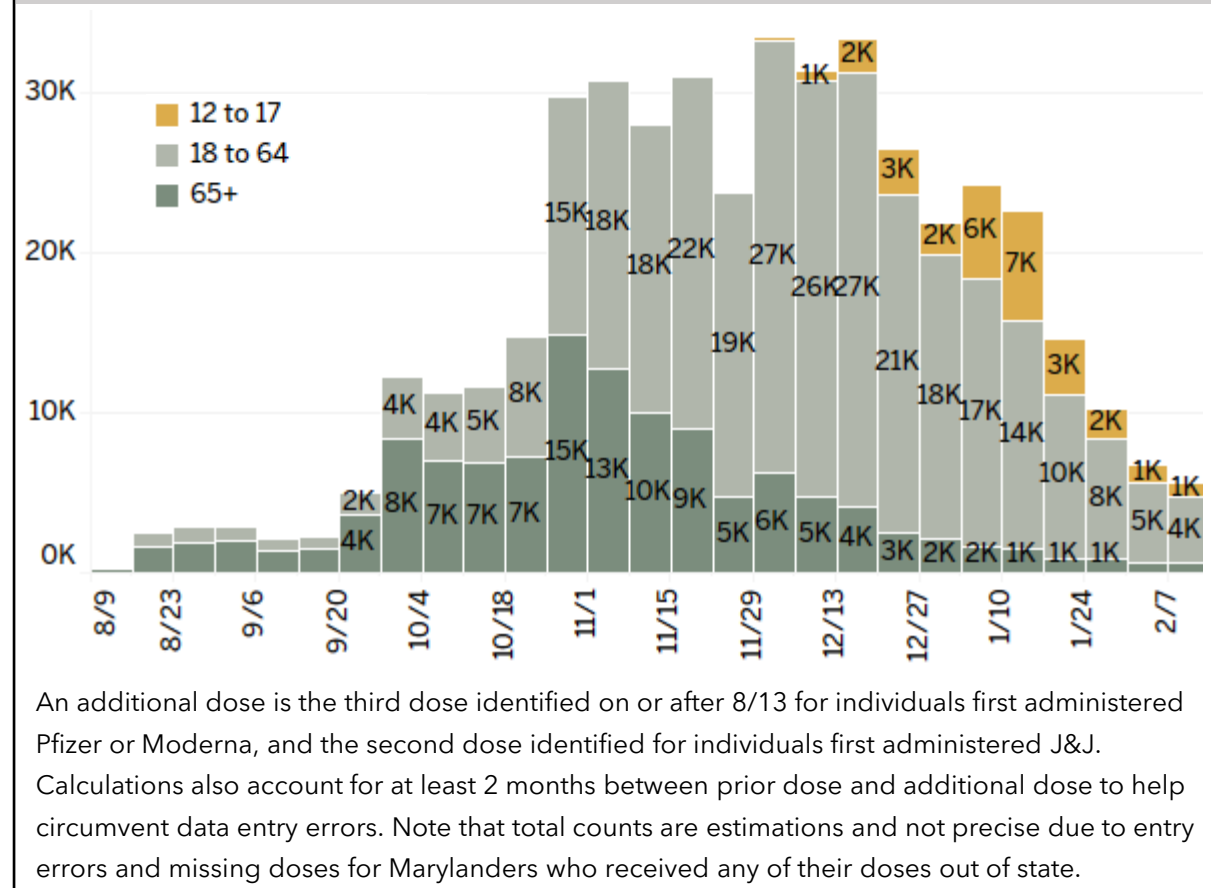
COVID-19 VACCINATIONS: FIRST-DOSE WEEKLY VOLUME

Charts below show most recent full weeks of data, up to **February 13, 2022**.

VACCINATIONS BY TYPE



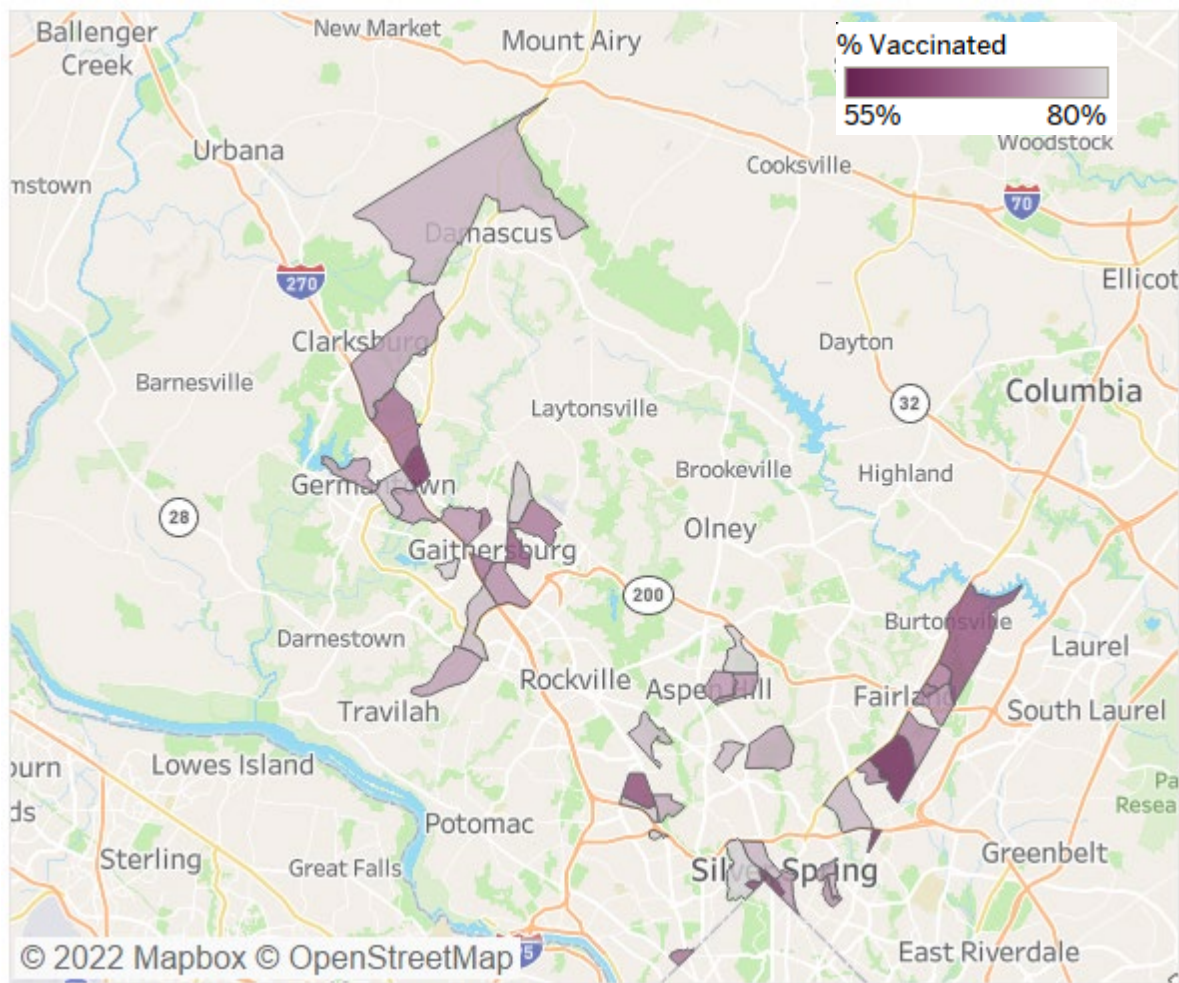
ADDITIONAL DOSES BY AGE GROUP



Unlike the CDC vaccination data, data from Maryland Health Department only include Montgomery County residents who were vaccinated in Maryland. Totals do not include vaccinations administered at federal entities within the county to non-residents.

COVID-19 VACCINATIONS: GAPS

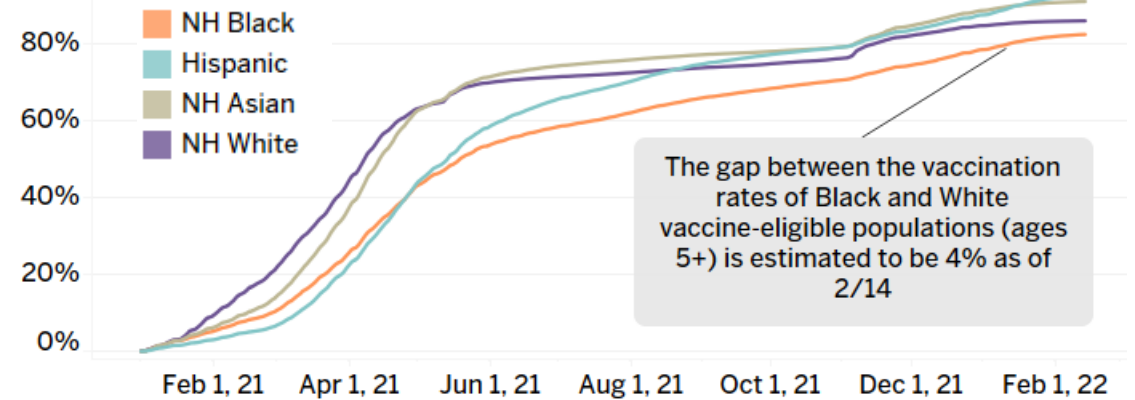
TRACTS WITH BELOW AVERAGE FIRST-DOSE RATES



Across the highlighted tracts above, 30% of the population is White non-Hispanic, 28% is Black non-Hispanic, 24% is Hispanic, and 14% is Asian/Pacific Islander.

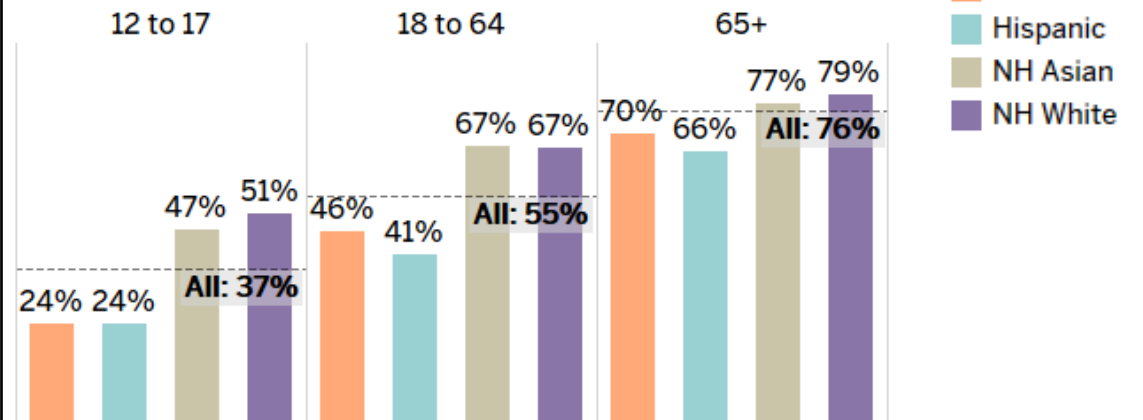
FIRST-DOSE VACCINATION RATES BY RACE

Population Ages 5+ First-Dose Rates



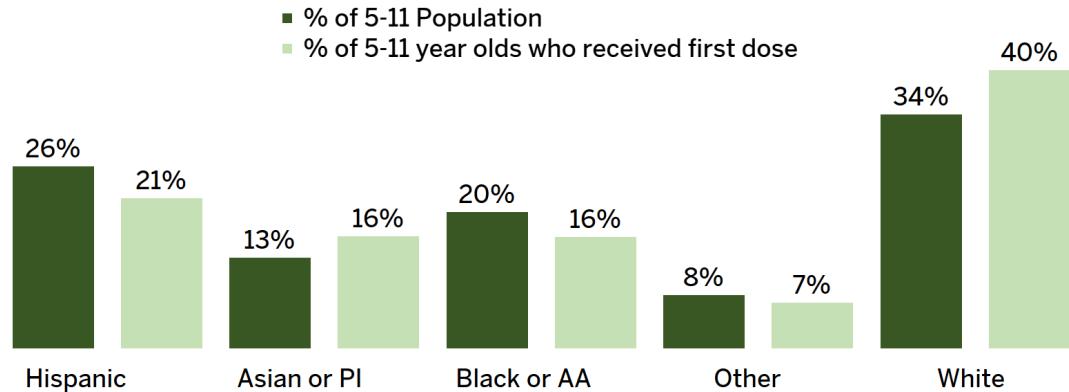
ADDITIONAL DOSE RATES BY RACE & AGE

Percent of Vaccinated Who Received Booster



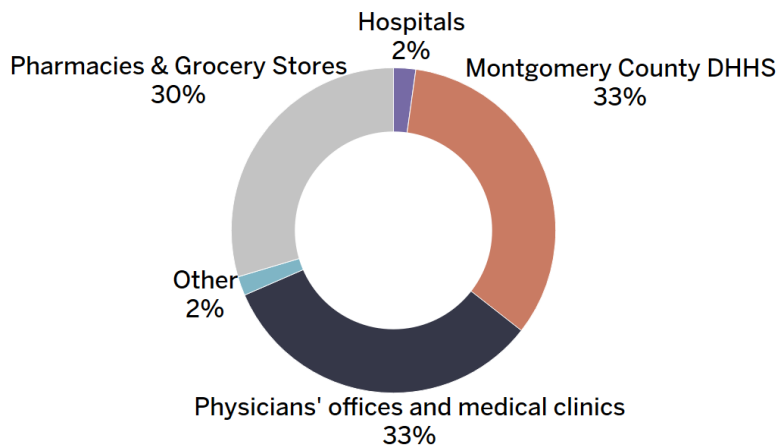
COVID-19 VACCINATIONS: PEDIATRIC VACCINATIONS

FIRST DOSES BY RACE/ETHNICITY



Charts reads: 26% of 5-11 population are Hispanic, and 21% of vaccinated 5-11 population are Hispanic. <1% of vaccinated children identify as Native American; they are included in the "Other" category. Approximately 3% of pediatric records do not contain race/ethnicity information.

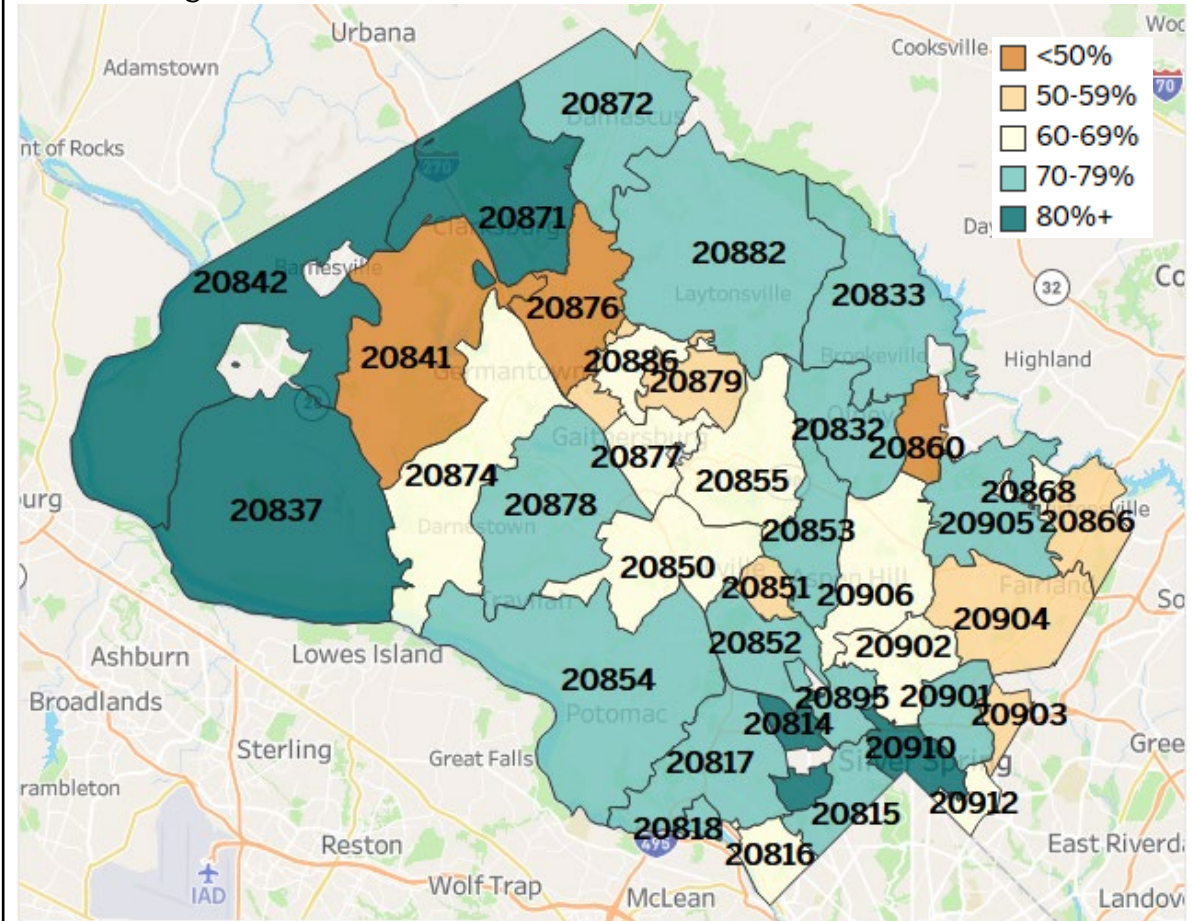
PEDIATRIC VACCINE PROVIDERS



Pediatric vaccinations are distributed evenly between Montgomery County DHHS (in partnership with MCPS, physicians and medical clinics, and pharmacies and grocery stores.

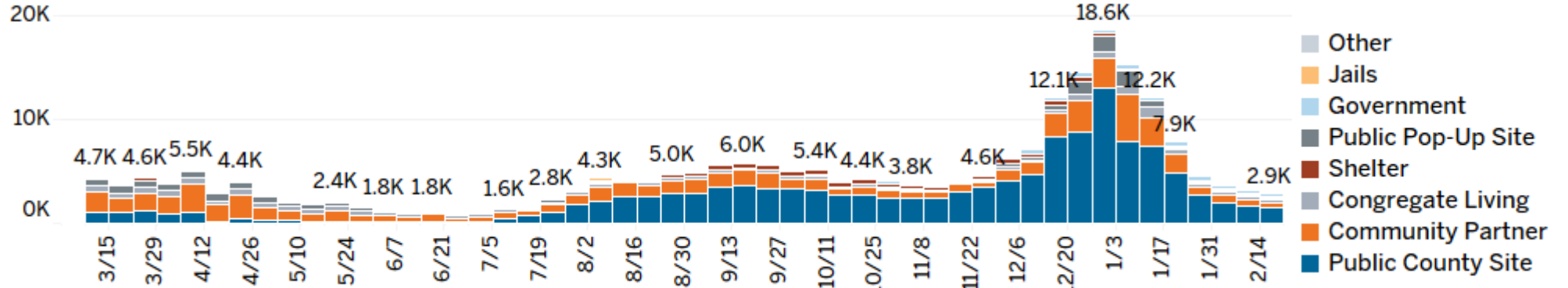
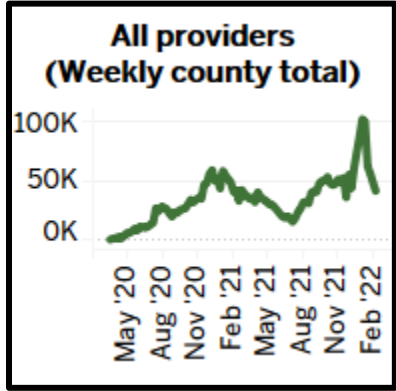
FIRST-DOSE VACCINATION RATES BY ZIP CODE

Vaccination rates among residents ages 5-14 are used as a proxy for pediatric vaccination rates in the map below due to the availability of population estimates only for certain age categories. Zip codes with fewer than 100 residents ages 5-14 are excluded.

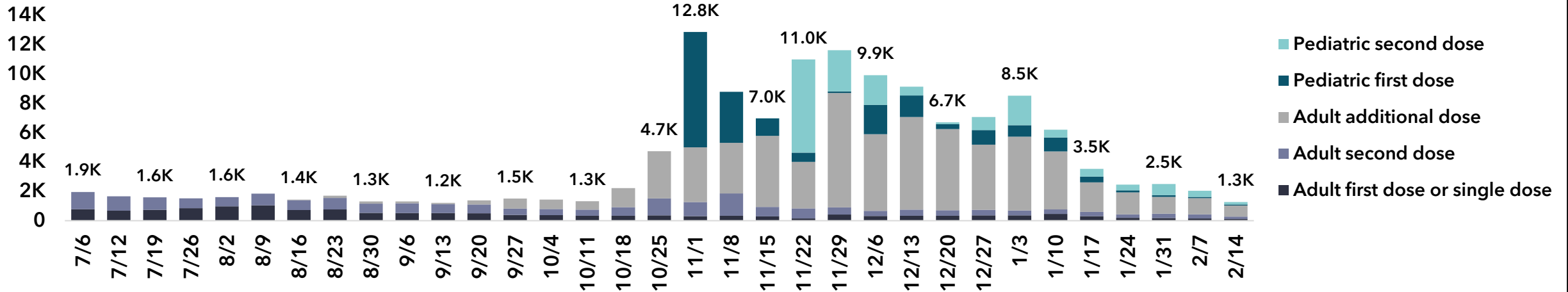


COUNTY GOVT COORDINATED TESTING & VACCINATIONS

DHHS-ADMINISTERED TESTING: 2,921 TESTS ADMINISTERED LAST WEEK



DHHS-ADMINISTERED VACCINATIONS: 1,259 DOSES ADMINISTERED LAST WEEK



Data are subject to retroactive changes.

DISTRIBUTION OF RAPID TESTS

2,144,000 rapid tests have been acquired by the County

- More than 1.6M kits have been distributed
- 788,154 kits have been distributed at libraries
- 948,251 masks have been distributed at libraries
- 440,280 rapid test kits have been provided to MCPS
- 102,758 test kits & 161,863 masks distributed to childcare, private schools, and community non-profits
- 48,090 rapid test kits and 124,446 N95 masks have been distributed through municipalities

DATA SOURCES

This report aggregates data from several sources, some of which are publicly available. Nearly all data are subject to retroactive changes.

- Rental assistance data is generated by DHHS each Sunday prior to the publication of this report.
- Data on evictions are provided by the Montgomery County Sheriff's Office each Monday for the week prior.
- Data on shelter occupancy are collected by DHHS weekly.
- MC311 data are downloaded weekly from [DataMontgomery](#).
- Unemployment data are downloaded monthly from [FRED](#).
- Case data are provided by Maryland Department of Health. Real-time data can be found on the Montgomery County [COVID-19 Surveillance Dashboard](#).
- Data on COVID-19 deaths are available through the [Maryland Department of Health](#) dashboard and ArcGIS platform.
- Vaccine data are downloaded from the [CDC website](#) each Tuesday.
- Data on county government coordinated testing and vaccinations are collected by DHHS daily.