

# **DHHS PULSE REPORT**

**COVID-19 IMPACT AND RECOVERY**

**August 10, 2022**



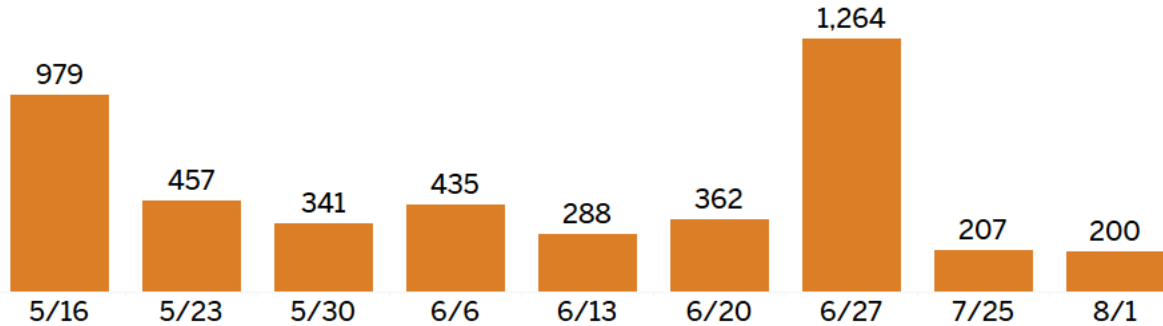
# **RESPONSE: EMERGENCY ASSISTANCE & DEMAND**

# COVID-19 RENT RELIEF UPDATE: WEEK OF AUG 1-7

## ROUND 4 APPLICATIONS FOR TENANTS BY WEEK

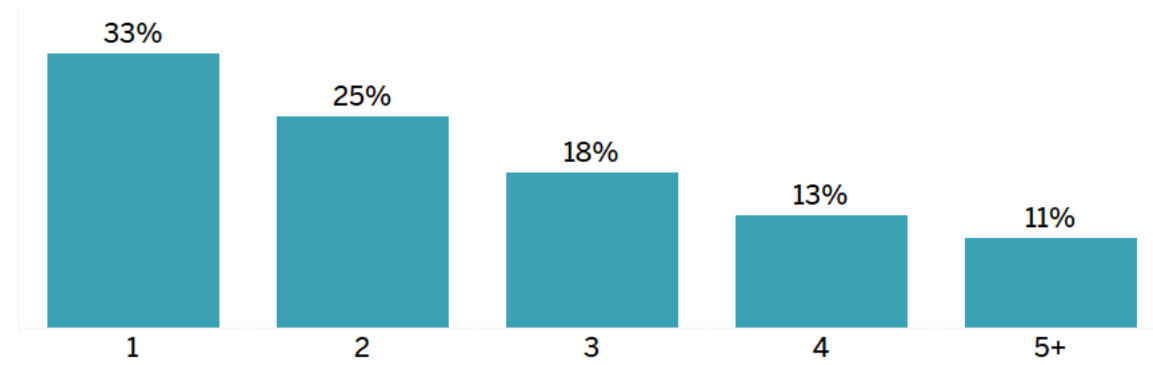
**4,533 Households**

(Application type: 94% tenant; 6% landlord)

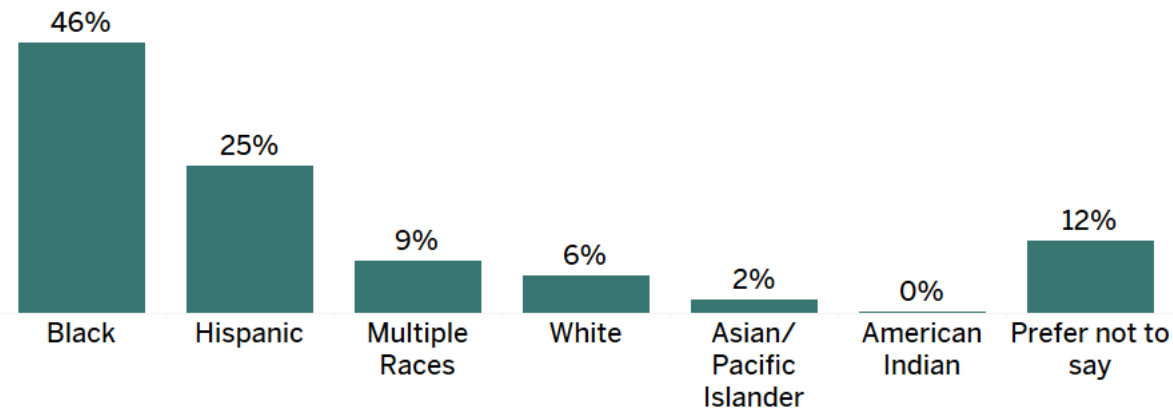


Note: Applications reopened to new users on 7/27. All applications will be reviewed.

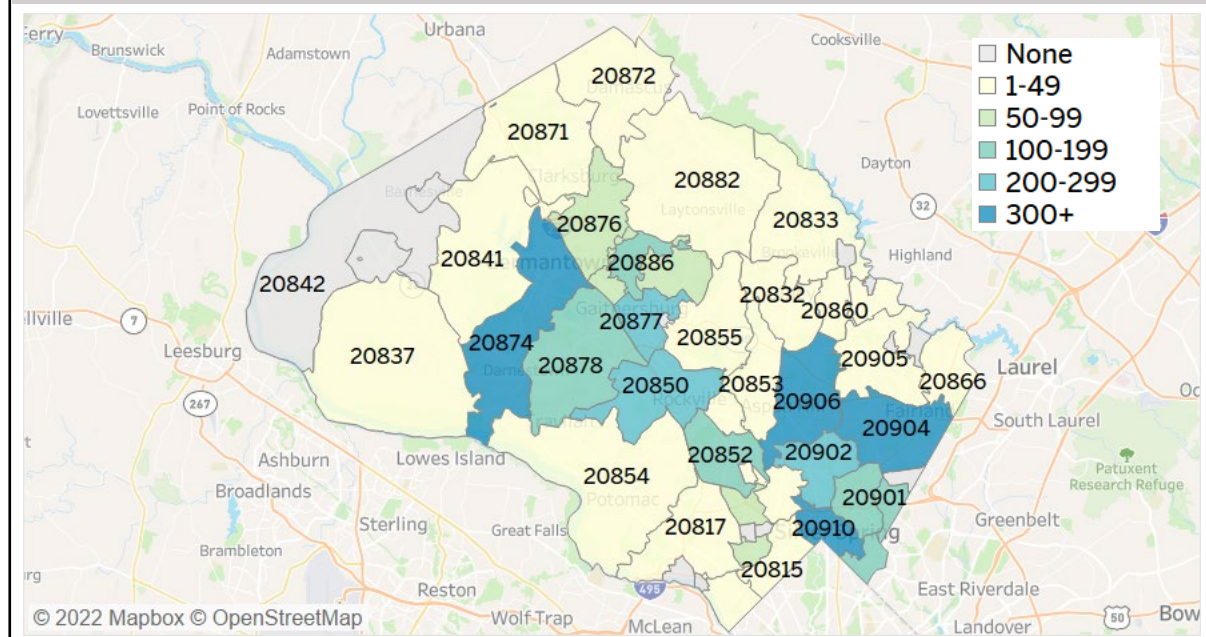
## HOUSEHOLD SIZE



## TENANT RACE/ETHNICITY

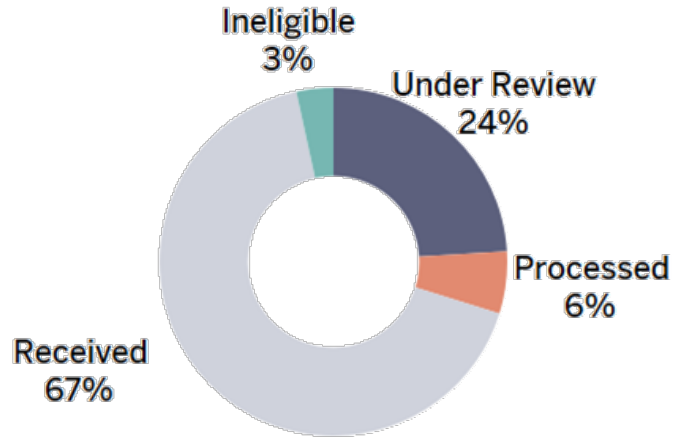


## TENANT APPLICANTS BY ZIP CODE



# COVID-19 RENT RELIEF UPDATE: WEEK OF AUG 1-7

## ROUND 4 APPLICATION STATUS

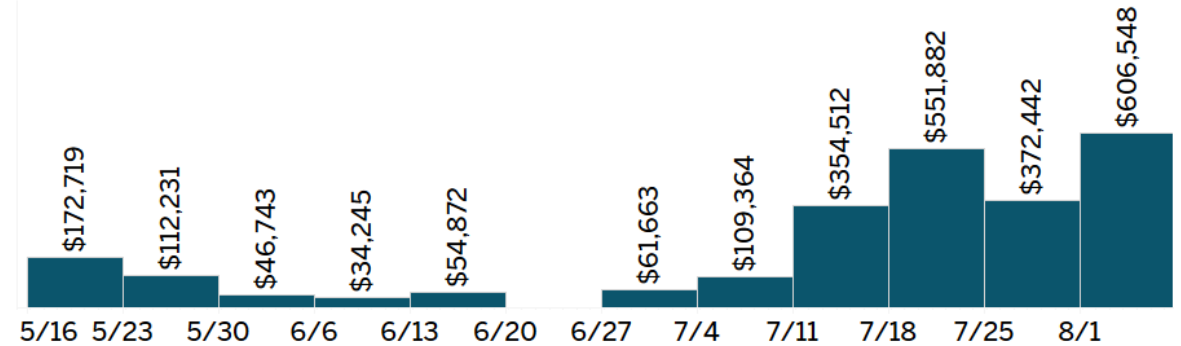


Applications deemed ineligible are typically from applicants located out of jurisdiction or who are not behind on rent.

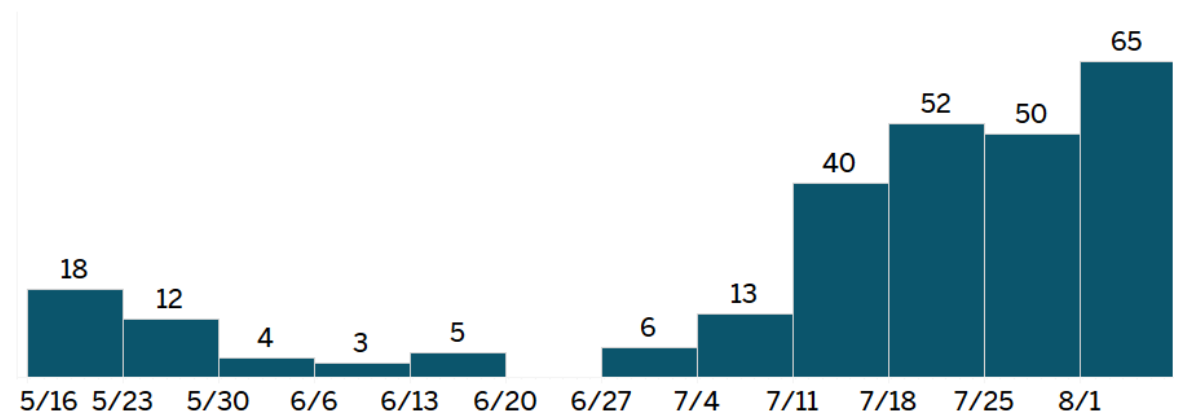
## APPROVALS BY WEEK

In total, the COVID-19 Rental Relief Program has approved **\$80.1M** in payments for **10,692** households.

**\$2,477,221**  
approved since May 16



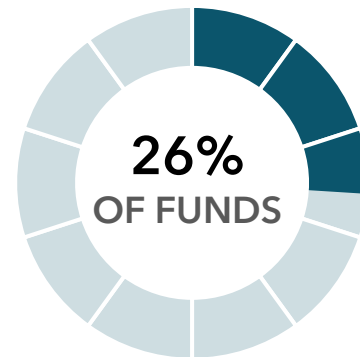
**265 Households**  
approved since May 16



## ERAP2 (DIRECT & STATE) EXPENDITURES

Award  
**\$40.5M**

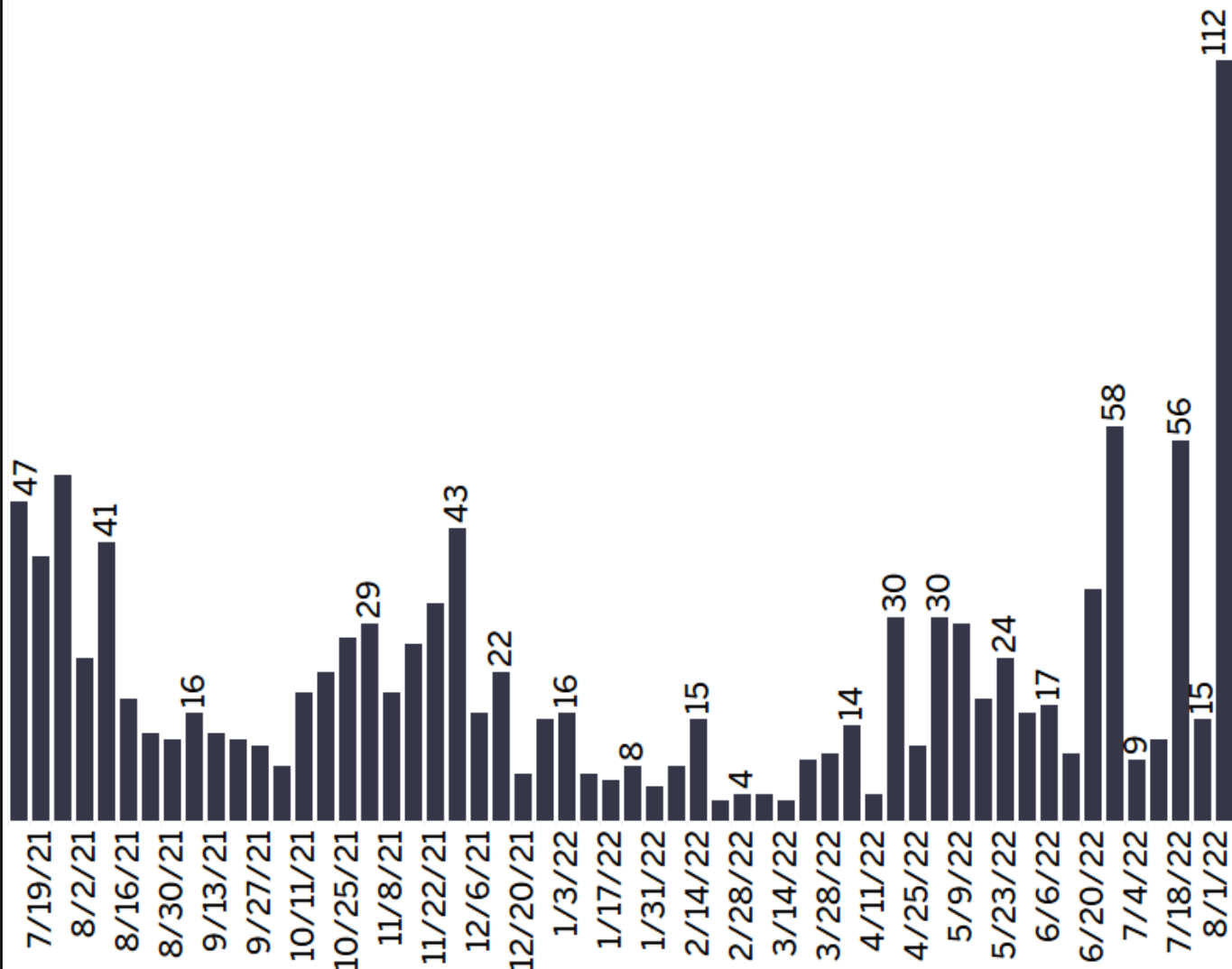
Current spending and encumbered  
**\$10.6M**



Note: Spending and percentages may shift as payments are reconciled.

# EVICTON TRACKER

## NEW WRITS BY WEEK

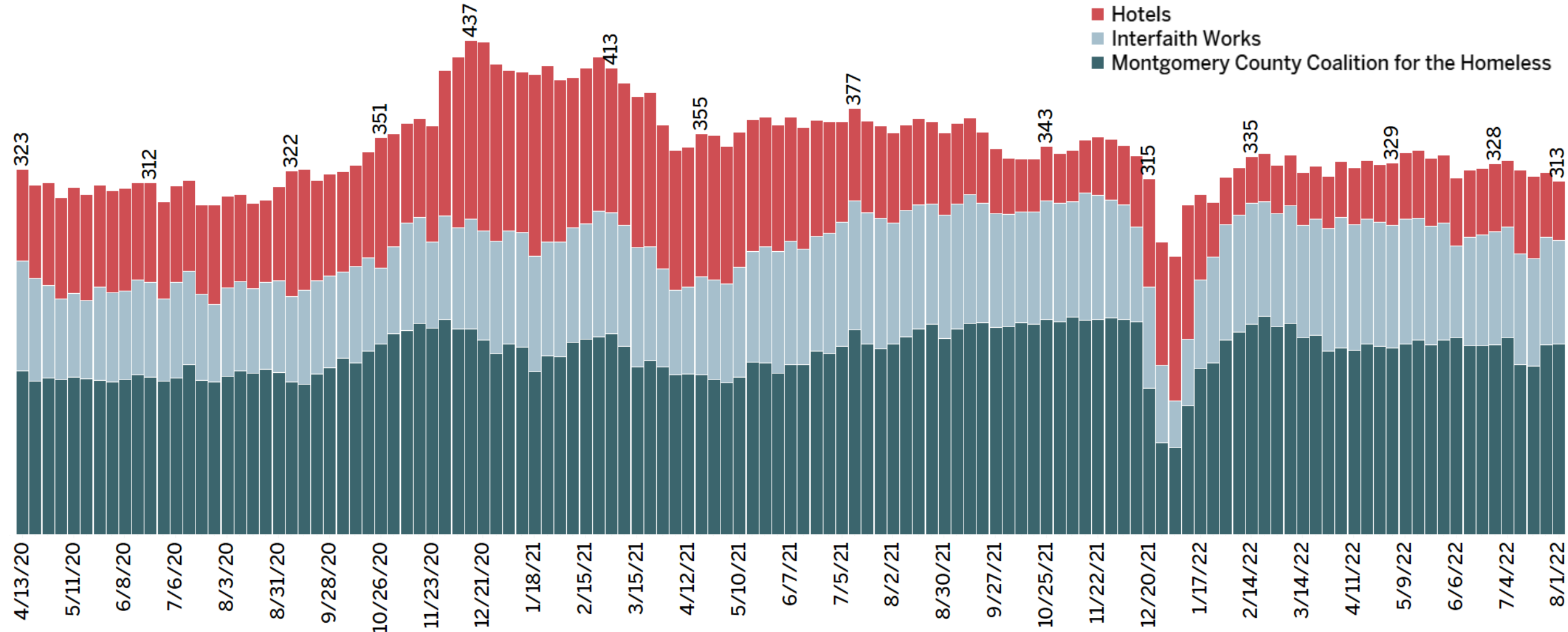


- **1,459** residents scheduled for eviction after July 19, 2021
- **39%** of households with writ have applied for emergency rental assistance
- Context: **fewer than 8%** of writs typically result in eviction

NOTE: Records on writs for eviction can include commercial tenants as well as multiple notices for a single household. The stats above attempt to capture unique residential households only, but it is not always possible to make such distinctions.

# SHELTER OCCUPANCY

## Average Daily Shelter Occupancy by Week

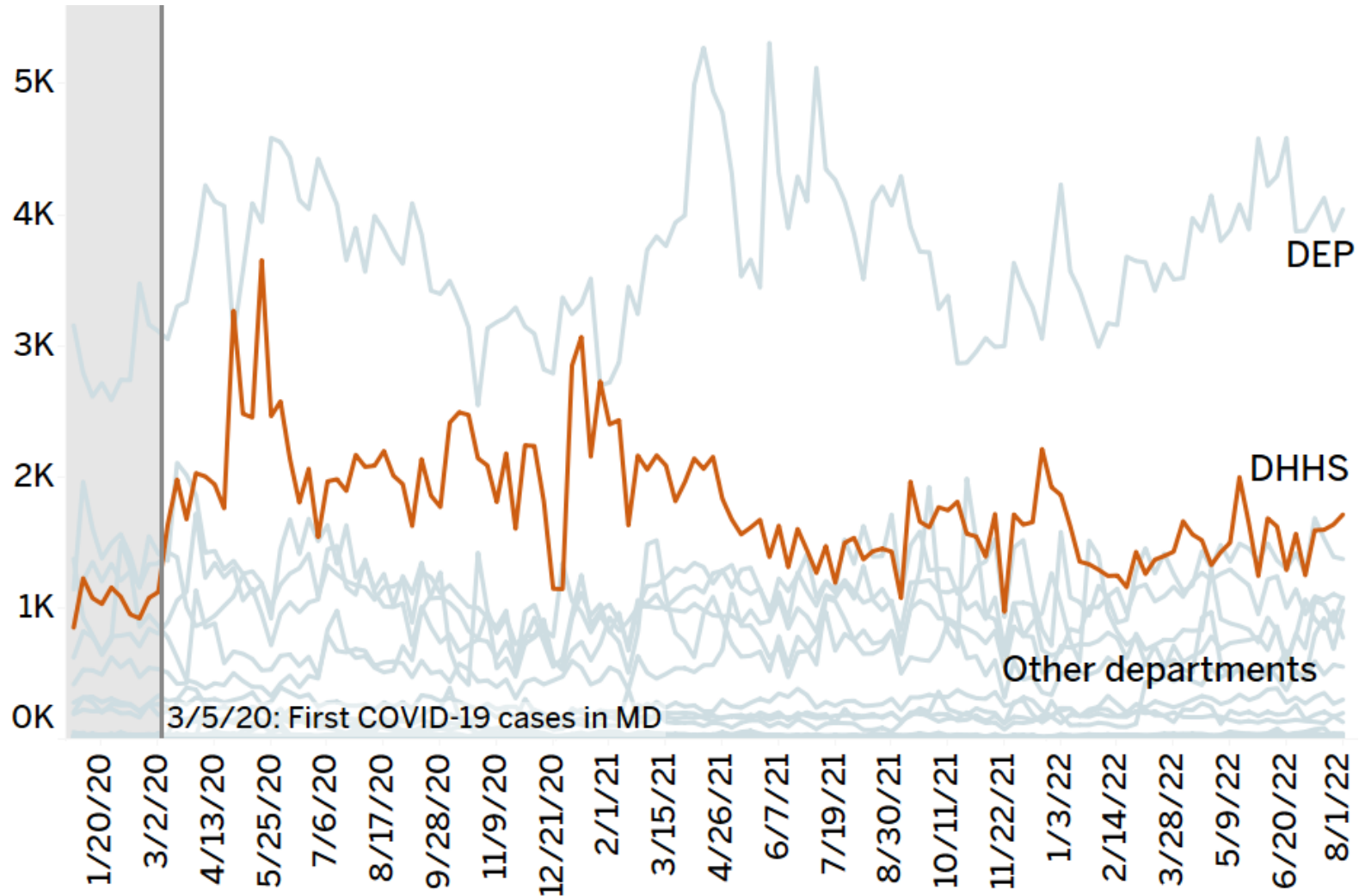


NOTE: Up to March 7, total occupancy did not include MCCH-affiliated hotels providing shelter to those who are in quarantine or isolation.

# MC311 WEEKLY CALL VOLUME: DHHS

## WEEKLY CALLS BY DEPARTMENT

**1,712** calls last week for DHHS services



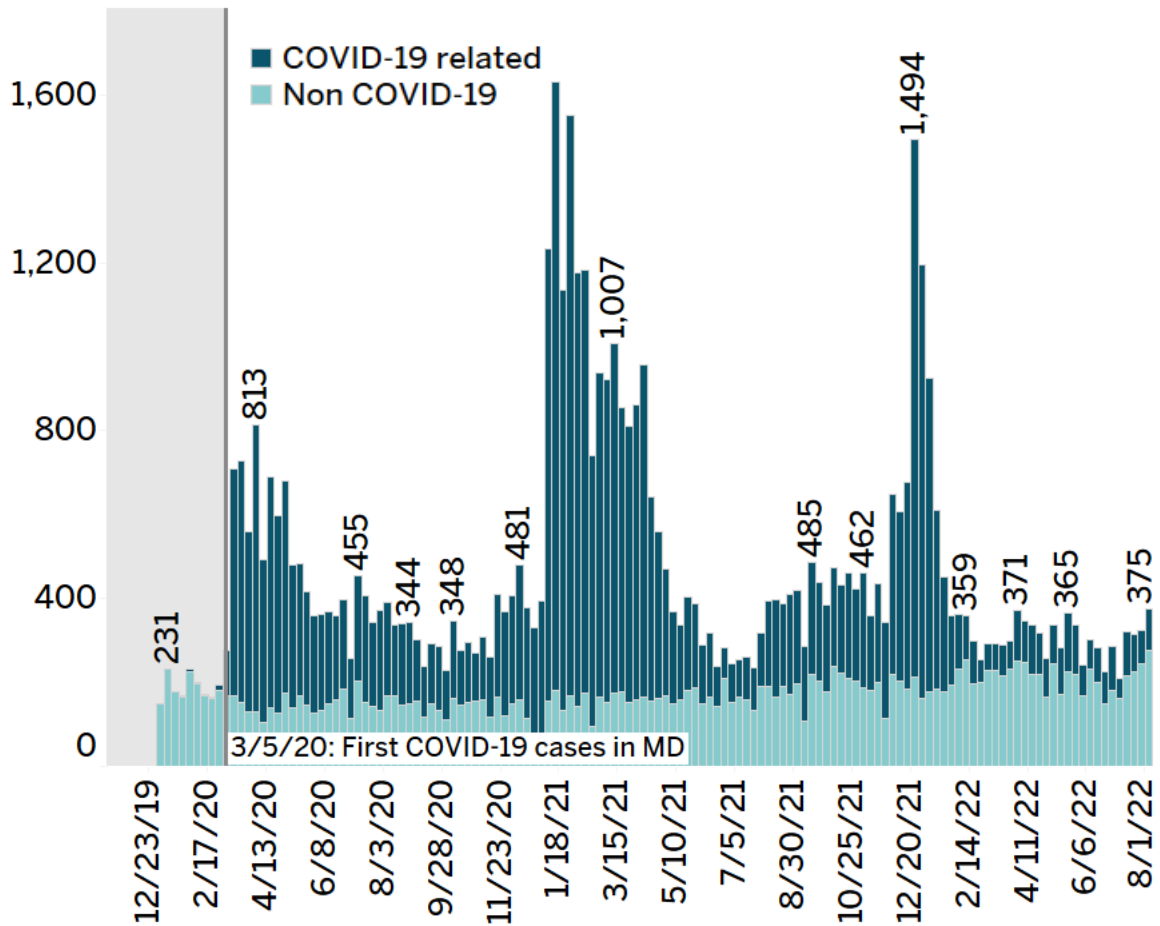
- 38% of last week's DHHS service calls were regarding public assistance programs
  - Most questions regarding public assistance are referred to the Office of Eligibility and Support Services, which in May fielded 1,946 direct calls and 2,989 referrals from MC311
- 17% of DHHS calls to MC311 were about the COVID Rental Relief Program

# MC311 WEEKLY CALL VOLUME: DHHS

## PUBLIC HEALTH

**375** calls last week for Public Health

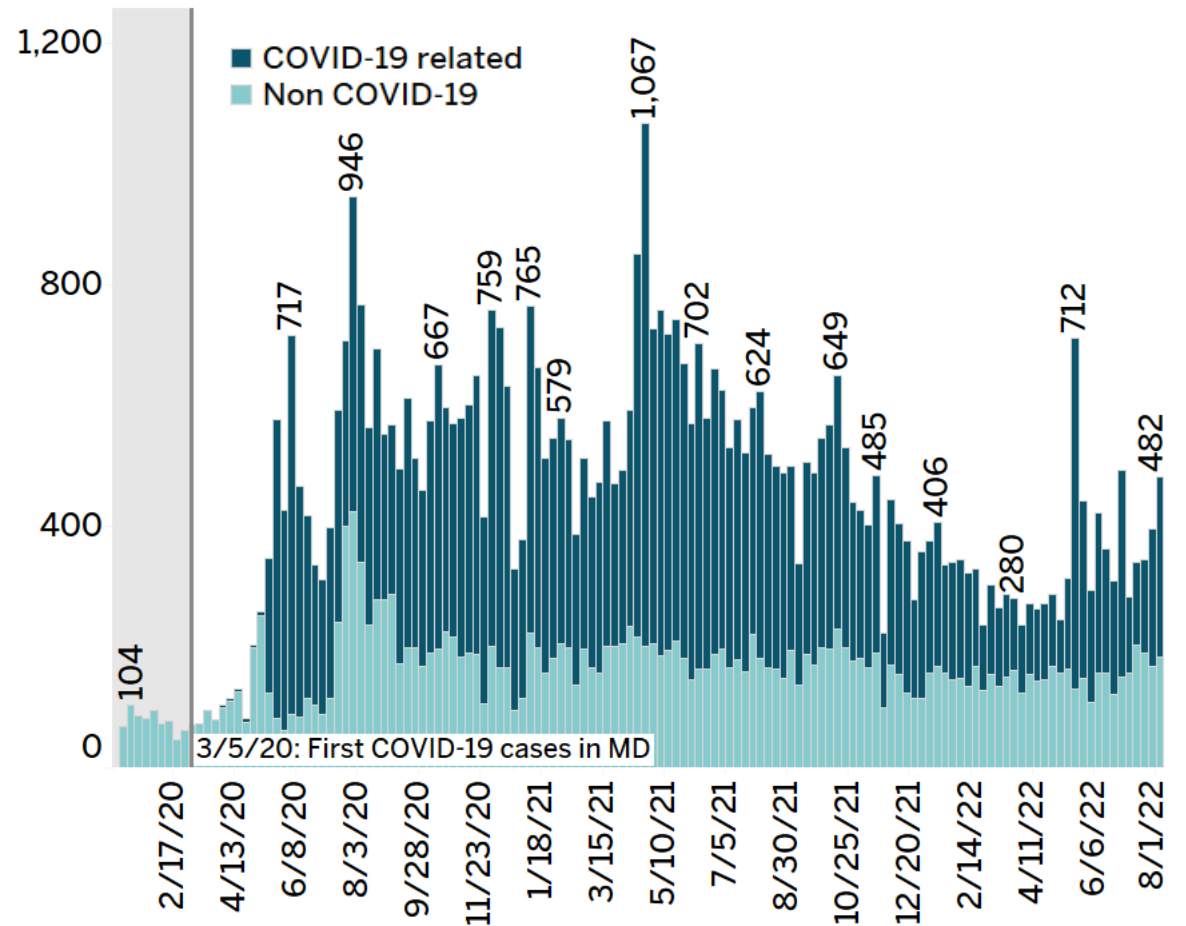
**26%** related to COVID-19



## SERVICES TO END & PREVENT HOMELESSNESS

**482** calls last week for SEPH

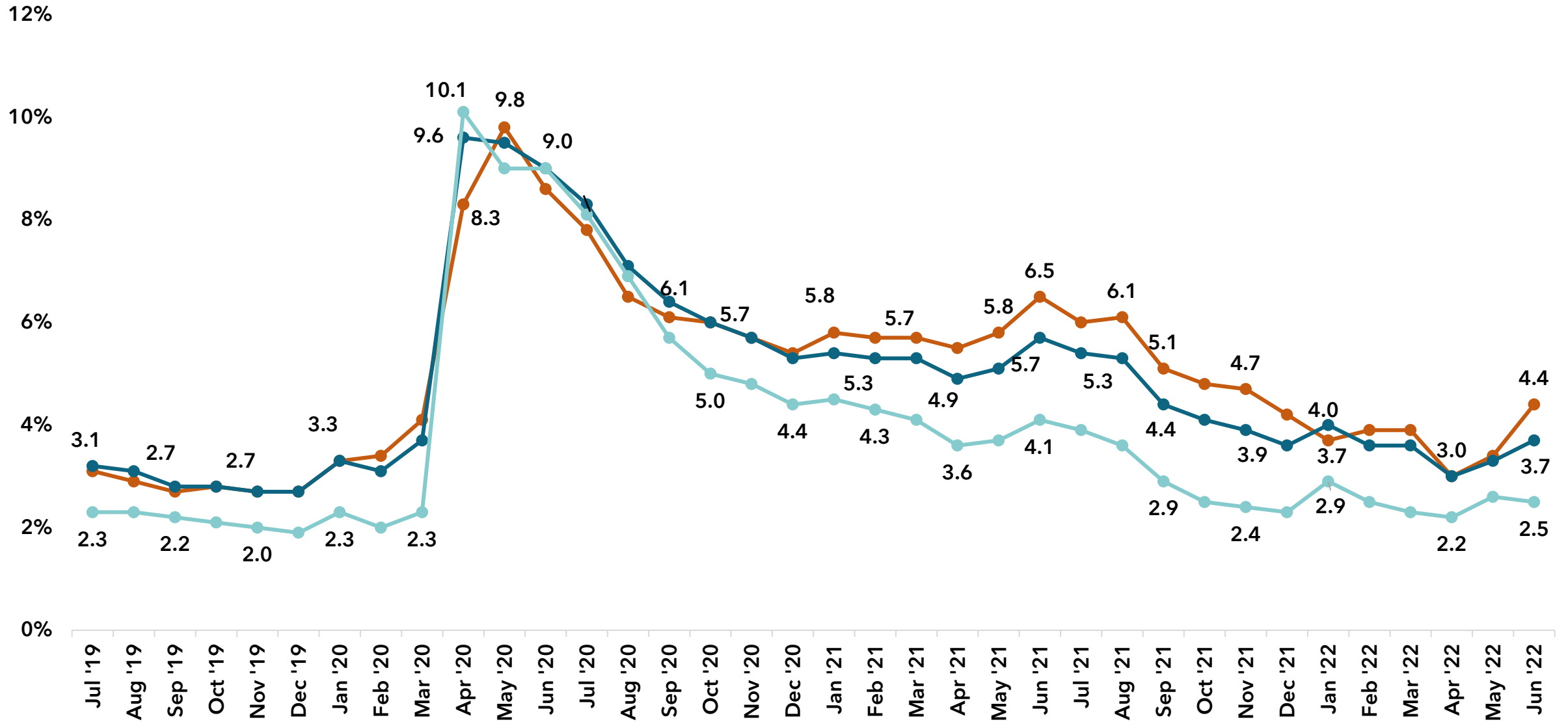
**62%** related to COVID-19





# UNEMPLOYMENT RATES IN THE REGION

—●— Montgomery County    —●— DC-Metro Region    —●— Fairfax County



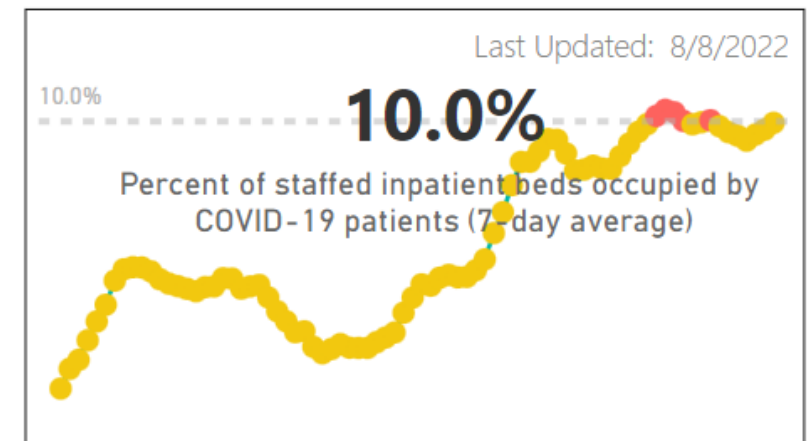
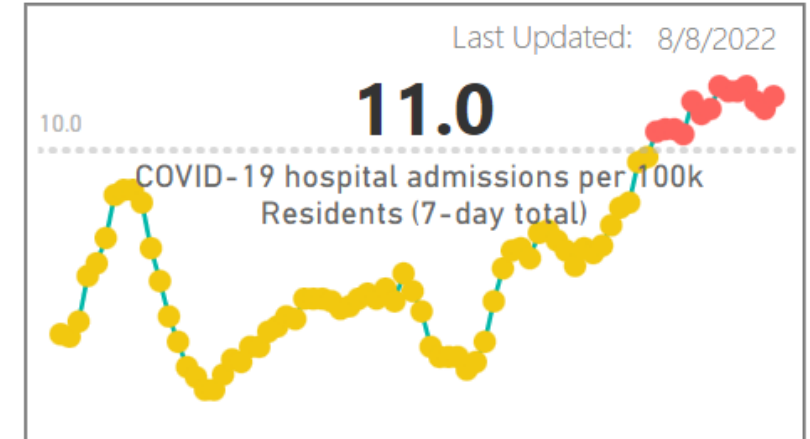
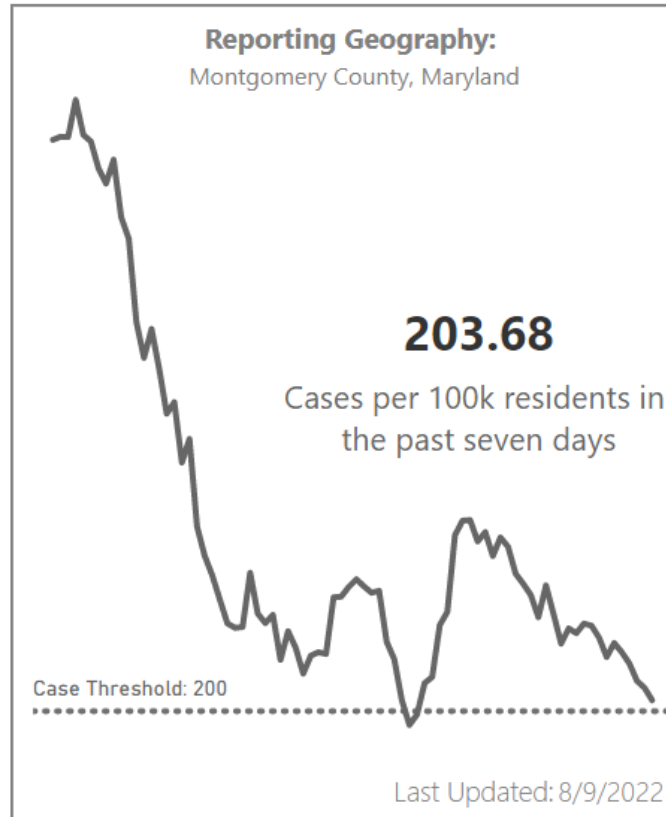
# COVID-19 CASES, VACCINATIONS, & TESTING



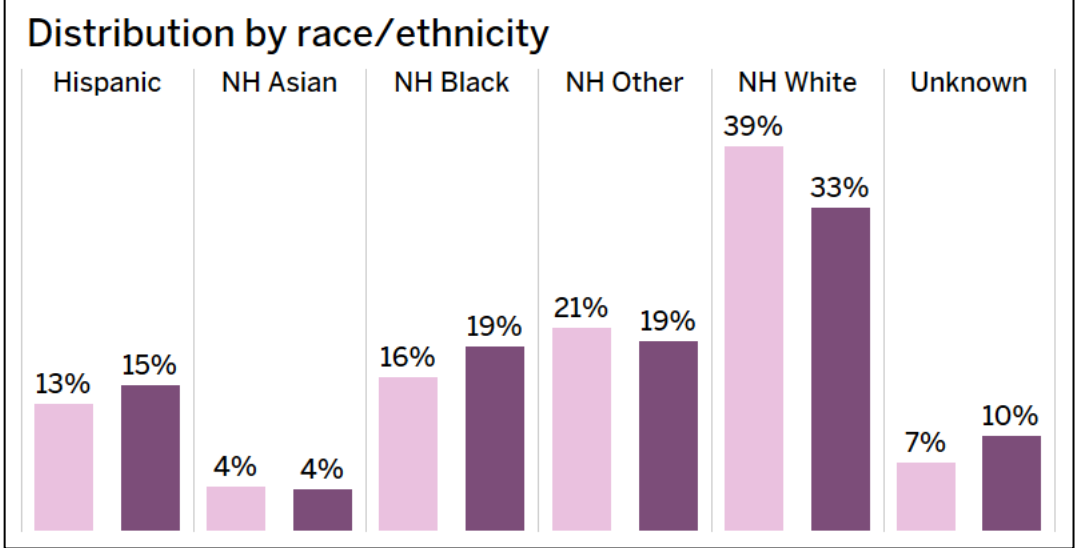
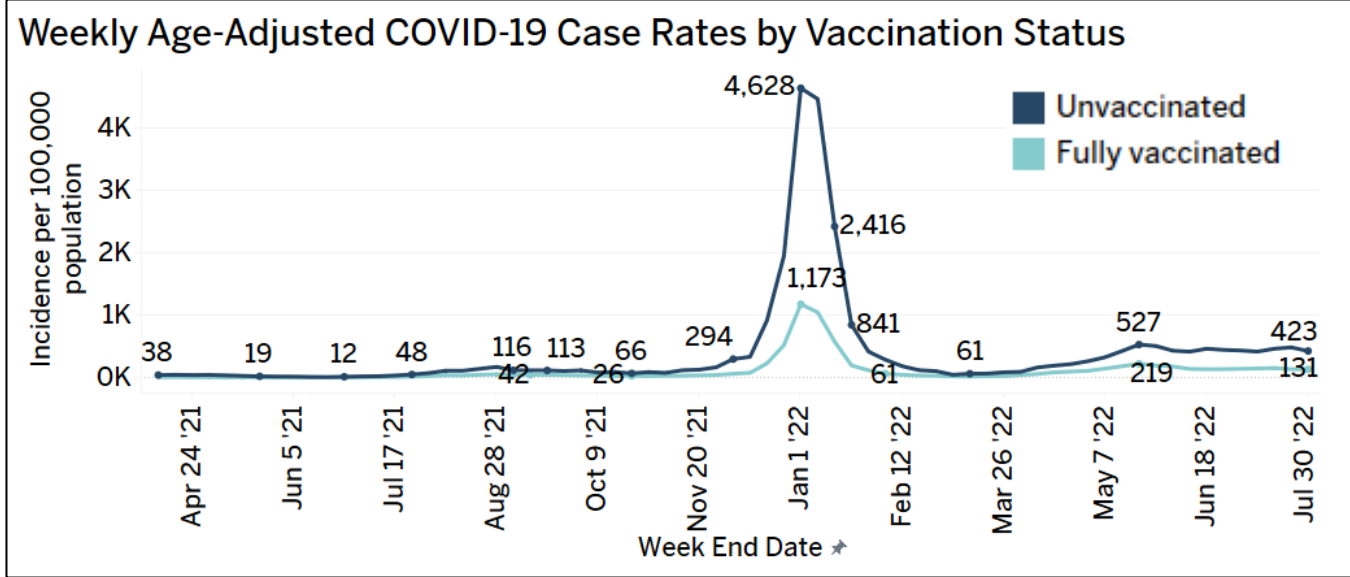
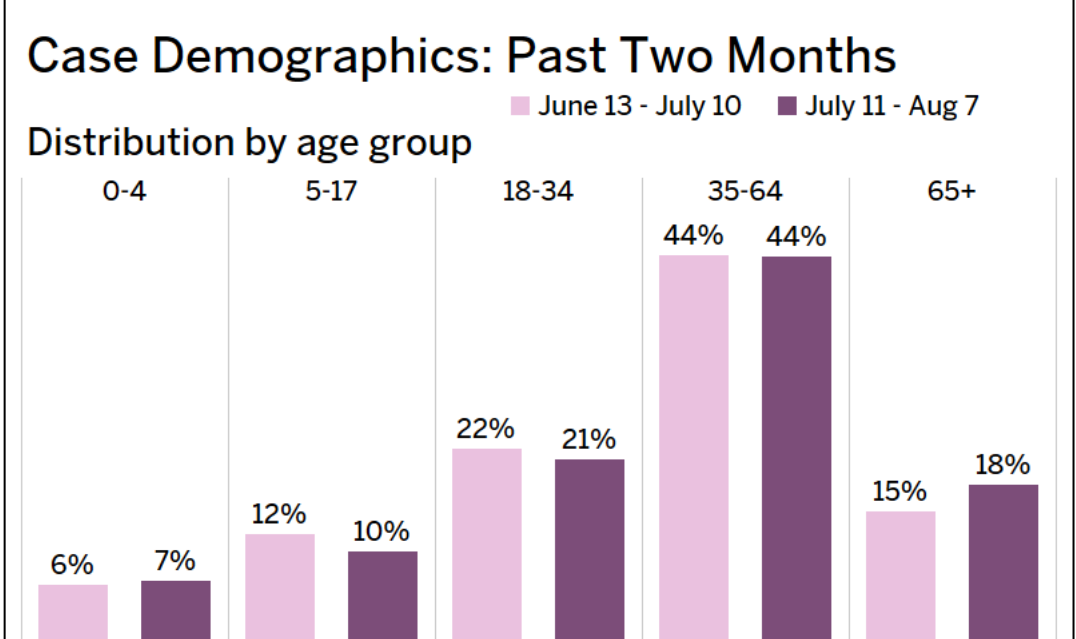
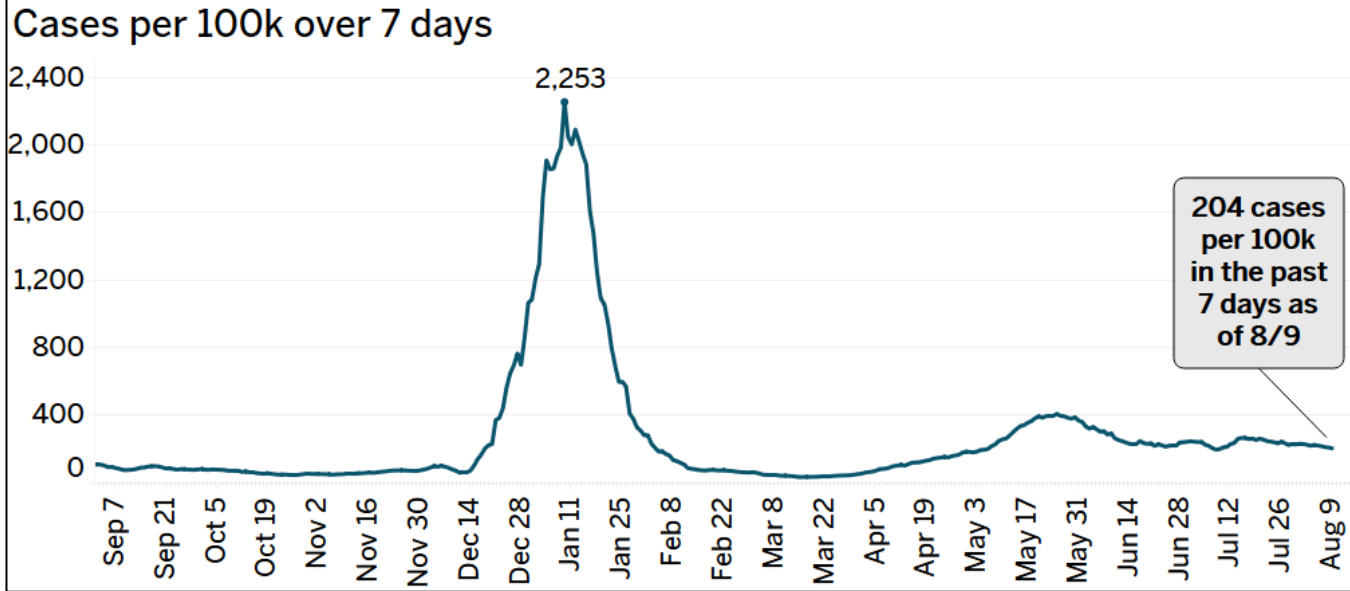
# COVID-19 COMMUNITY LEVEL STATUS

Based on CDC's community level indicators, Montgomery County's community level status is **HIGH**.

- 200 or more cases per 100k in the past seven days AND
- More than 10 new COVID-19 admissions per 100k in the past seven days OR
- More than 10% of staffed inpatient beds occupied by COVID-19 patients on average in the past seven days

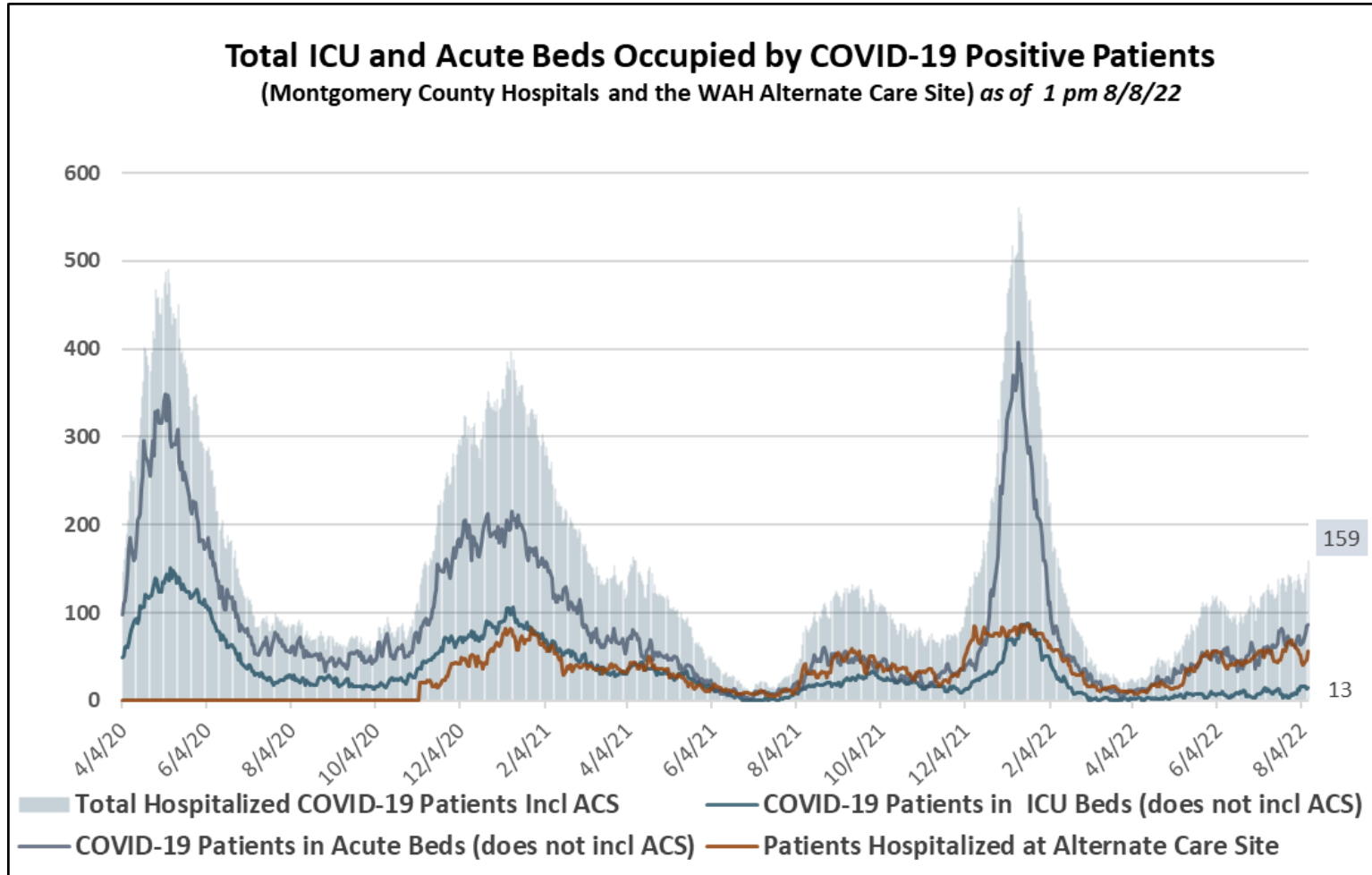


# COVID-19 CASES



Note: Case data only reflect confirmed cases via PCR tests.

# COVID-19 HOSPITALIZATIONS

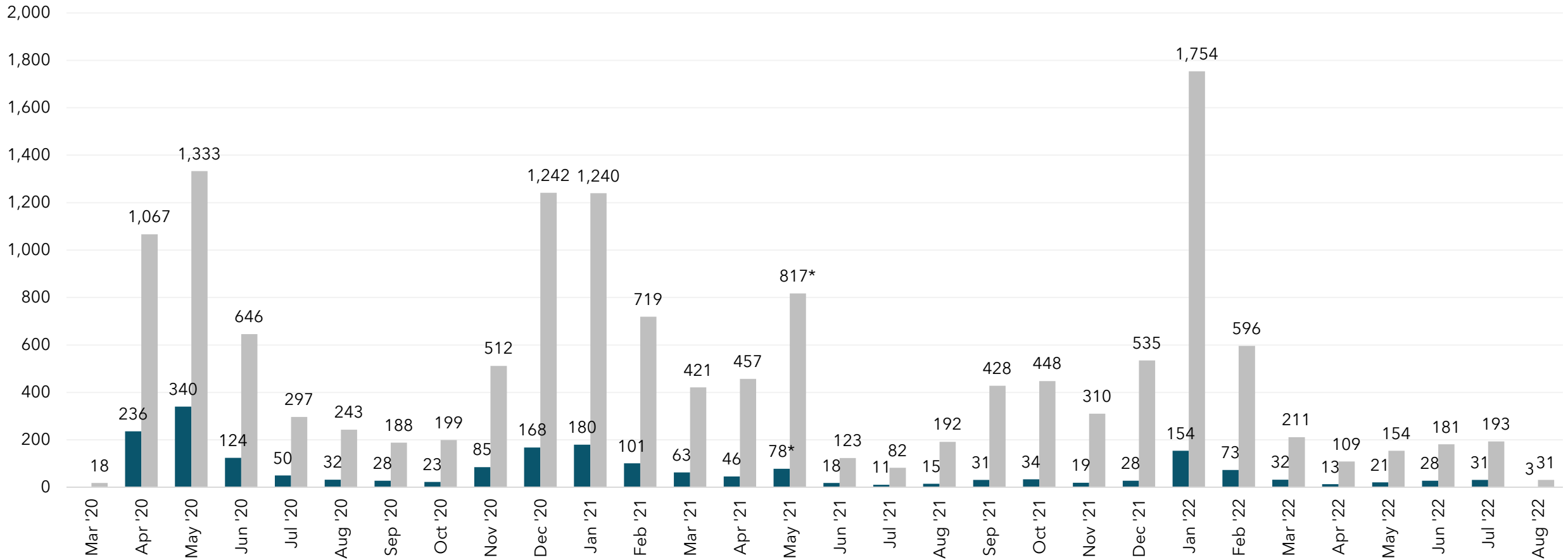


- There are 159 hospitalized COVID-19 patients as of 8/8. Acute care occupancy (87) and ICU bed occupancy (15) increased since last week (+17 and +8, respectively).
- 10% of hospital beds in the community are occupied by patients with a COVID diagnosis (as of 8/8).
- 57 patients are currently hospitalized at the alternate care site, a decrease of 2 since last week. These patients are transfers from other hospitals and may come from other jurisdictions.

# COVID-19 DEATHS

Monthly COVID-19 Deaths  
As of 8/6/22

■ Montgomery County ■ Maryland

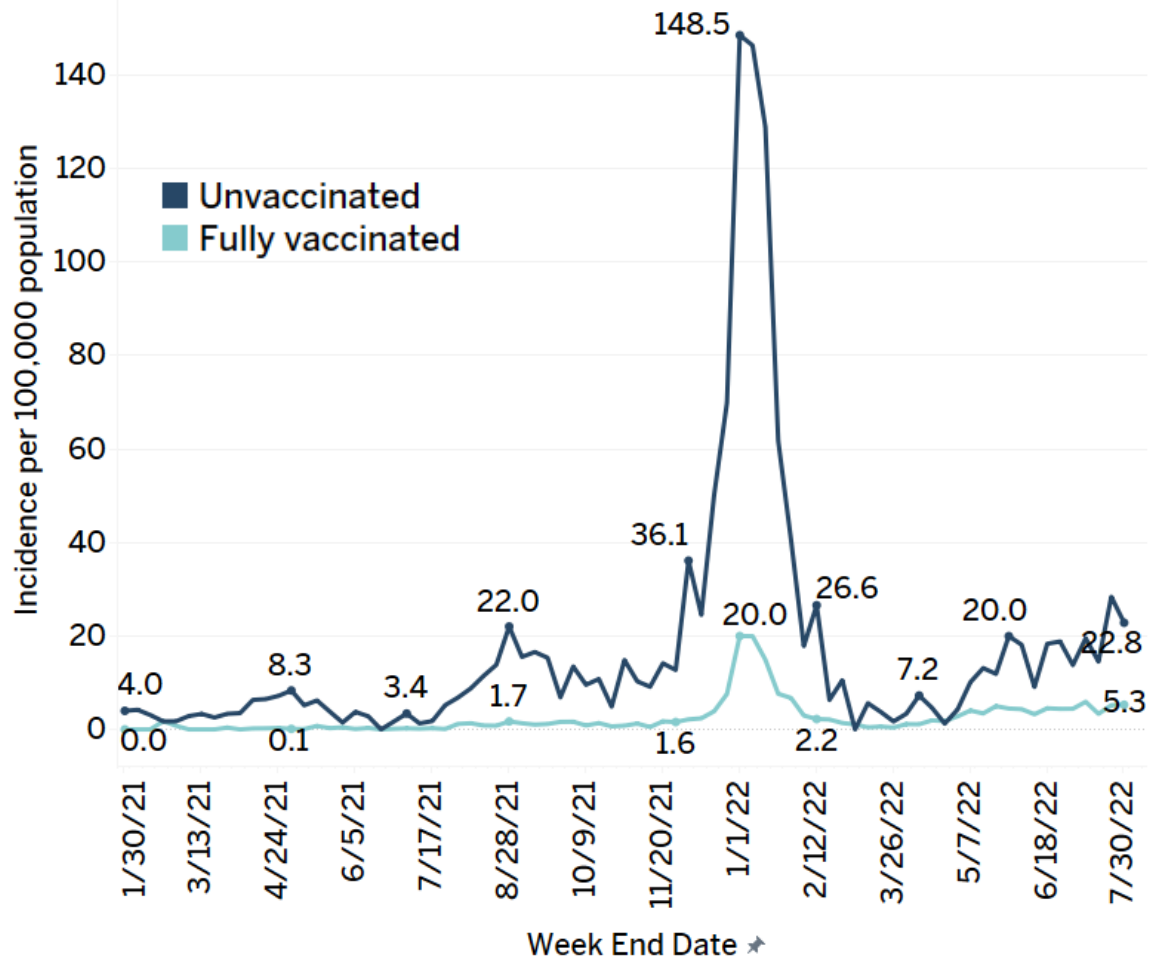


\*VSA revised death data on May 27, 2021 to include COVID-19 deaths not previously counted.

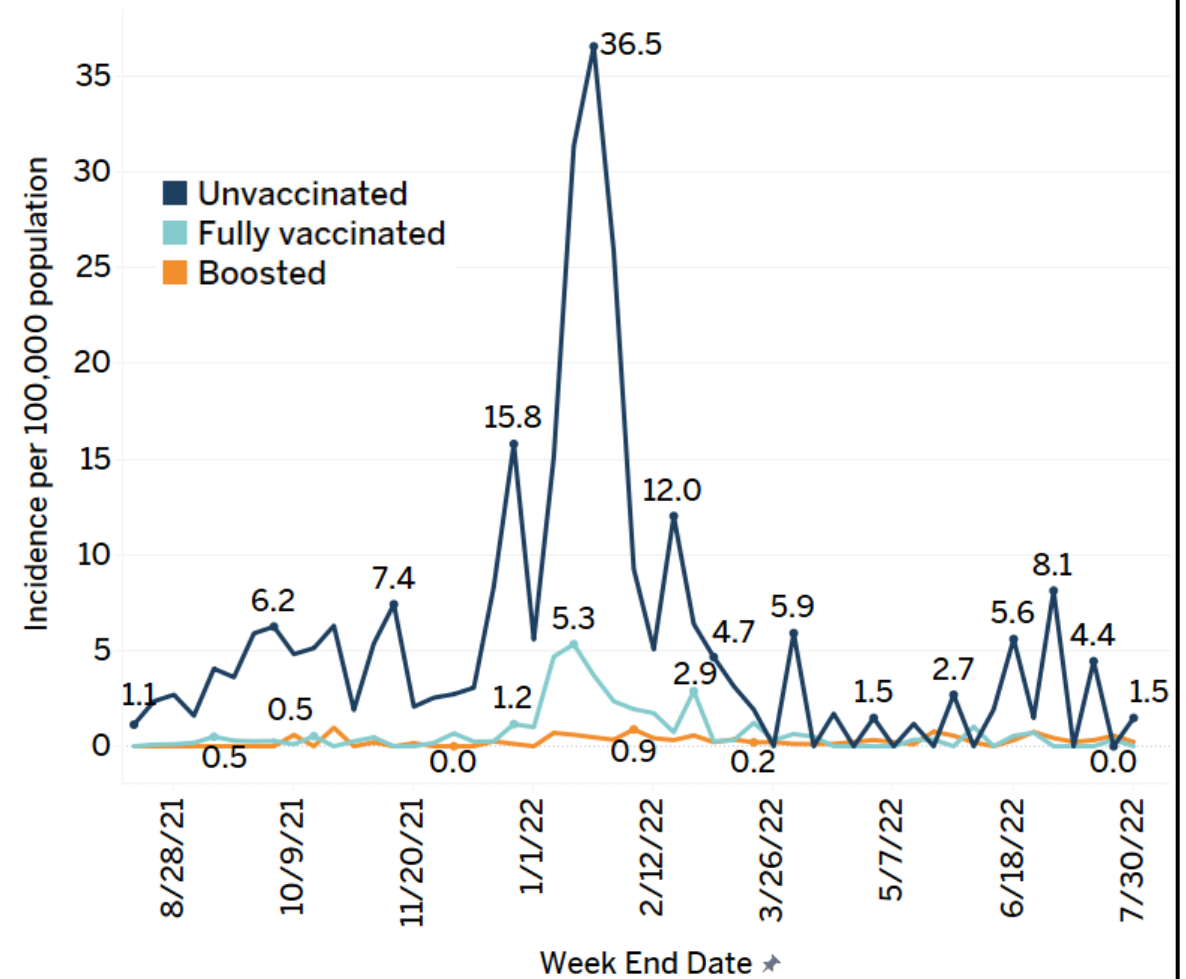
NOTE: Monthly totals are based on the date death was reported, which may not be the same as the date on which the death occurred.

# HOSPITALIZATIONS & DEATHS BY VACCINATION STATUS

Weekly Age-Adjusted COVID-19 Hospitalization Rates by Vaccination Status  
Montgomery County, MD



Weekly Age-Adjusted COVID-19 Death Rates by Vaccination Status  
Montgomery County, MD



NOTE: Hospitalization rates for the boosted population are not available as a separate measure.

# COVID-19 VACCINATIONS: TOTALS FROM CDC

## TOTAL VACCINATIONS (AS OF 8/3/22)

- **≥95%\*** of total population received at least **ONE DOSE** [N=1,104,298]
- **89%** of total population received at least **TWO DOSES** (fully vaccinated) [N=936,743]
- **58%** of fully vaccinated population received a **FIRST BOOSTER/ADDITIONAL DOSE** [N=544,123]

\*The CDC caps percentages at 95% to account for margins of error in data entry and population estimates.

NOTE: On 4/15/22, Maryland made updates to previously submitted data to the CDC that resulted in a decrease of 50,176 doses administered. Some percentages may have decreased as a result.

NOTE: The CDC vaccination count includes Montgomery County residents who received their shots in Maryland or outside the state. It also includes vaccinations administered in some federal entities within Montgomery County.

## VACCINATIONS BY AGE GROUP

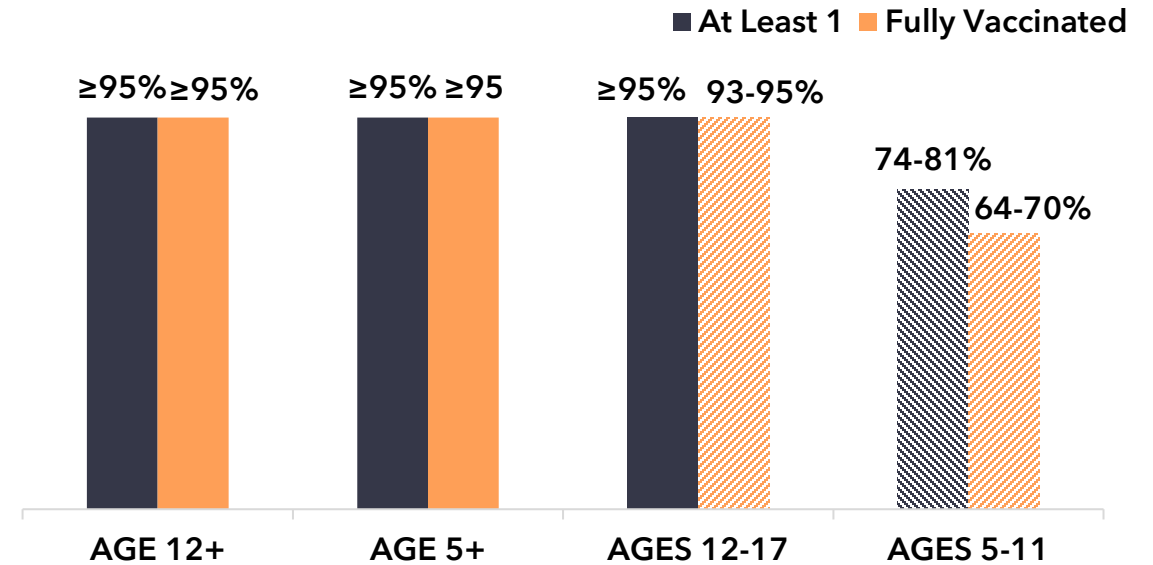


Chart reflects percent of total age group population that received doses. Percentage estimates are reflected as ranges for ages 12-17 and ages 5-11 due to higher margins of error.

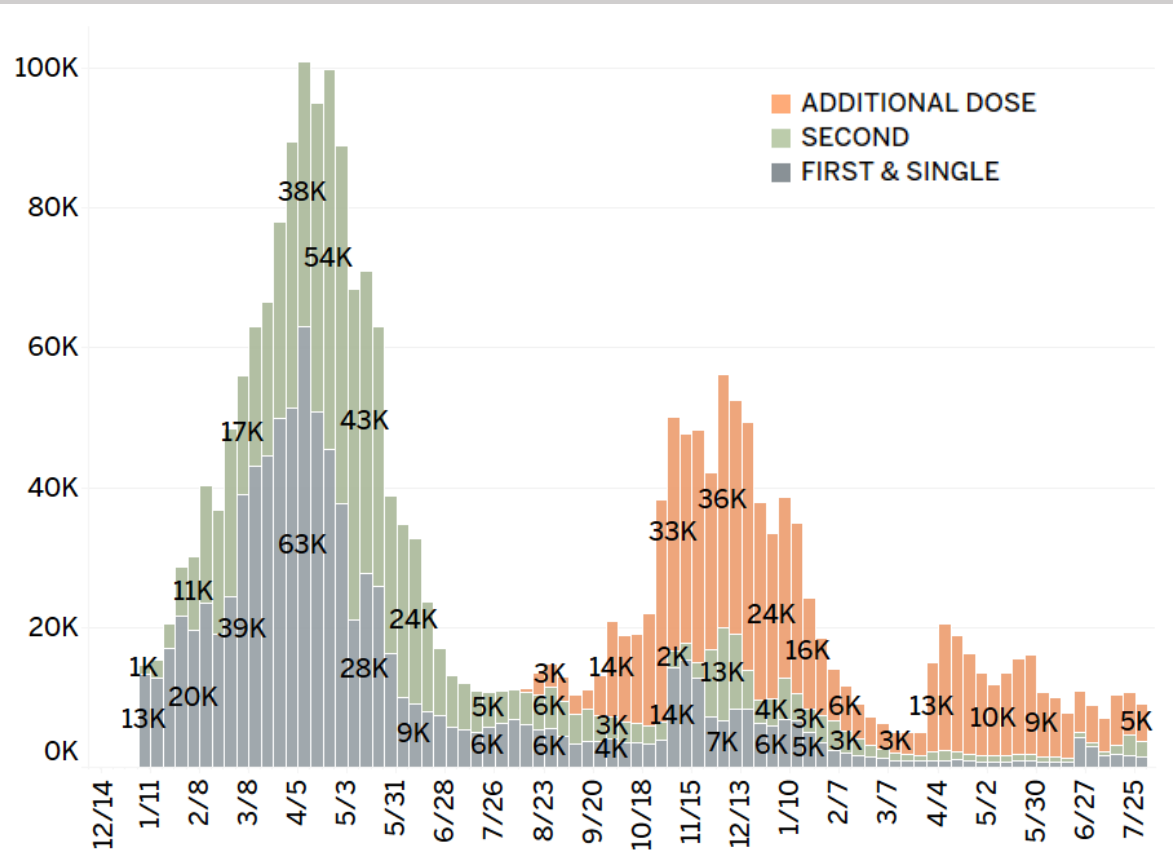
- **61%** of the fully vaccinated 12+ population received a **FIRST BOOSTER/ADDITIONAL DOSE** [N=531,963]
- **80%** of the fully vaccinated 65+ population received a **FIRST BOOSTER/ADDITIONAL DOSE** [N=138,831]



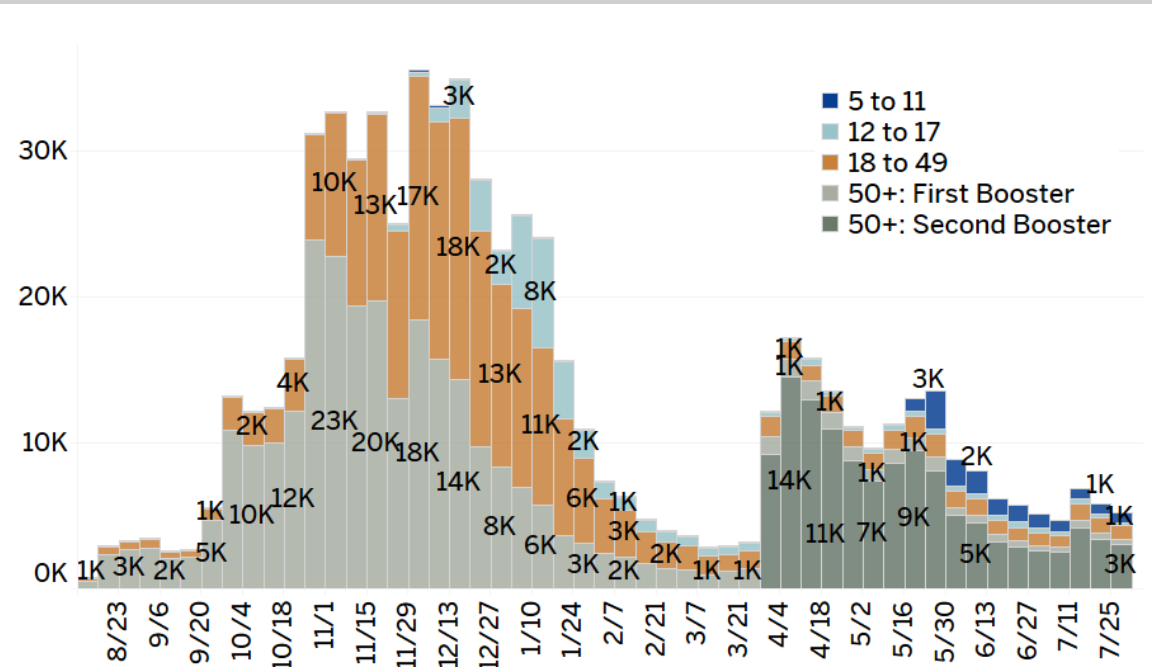
# COVID-19 VACCINATIONS: WEEKLY VOLUME

Charts below show most recent full weeks of data, up to **July 31, 2022**.

## VACCINATIONS BY DOSE



## ADDITIONAL DOSES BY AGE GROUP



A first booster is defined as the third in a series of two Pfizer or Moderna doses, or the second if recipient received J&J as first dose. A second booster is defined as either the third or fourth dose, depending on whether recipient received J&J as initial dose. Doses are counted without regard to date. Total counts are estimations and imprecise due to entry errors and missing doses for Marylanders who received any of their doses out of state.

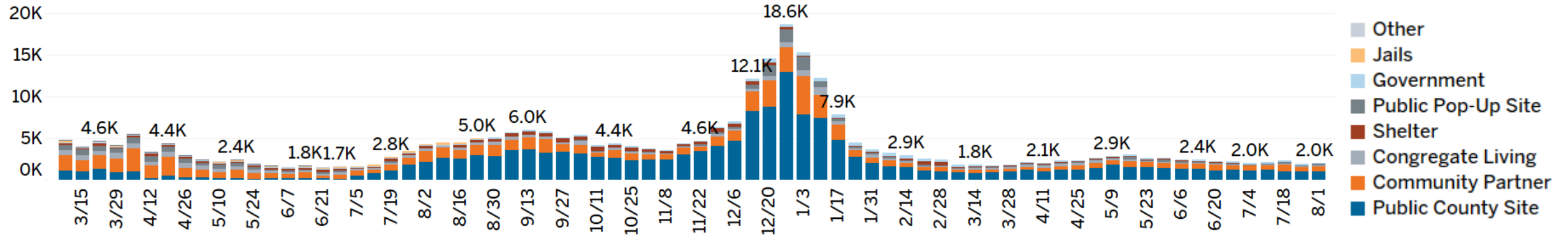
Unlike the CDC vaccination data, data from Maryland Health Department only include Montgomery County residents who were vaccinated in Maryland. Totals do not include vaccinations administered at federal entities within the county to non-residents.



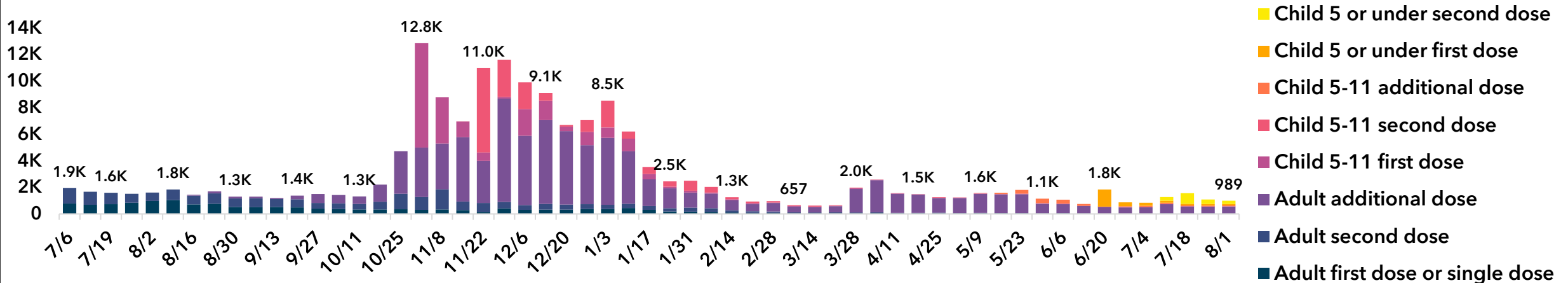


# COUNTY GOVT COORDINATED TESTING & VACCINATIONS

## DHHS-ADMINISTERED TESTING: 2,022 TESTS ADMINISTERED LAST WEEK



## DHHS-ADMINISTERED VACCINATIONS: 989 DOSES ADMINISTERED LAST WEEK



Data are subject to retroactive changes. The current data collection system does not distinguish between first and second booster shots.

# DATA SOURCES

This report aggregates data from several sources, some of which are publicly available. Nearly all data are subject to retroactive changes.

- Rental assistance data is generated by DHHS each Sunday prior to the publication of this report.
- Data on evictions are provided by the Montgomery County Sheriff's Office each Monday for the week prior.
- Data on shelter occupancy are collected by DHHS weekly.
- MC311 data are downloaded weekly from [DataMontgomery](#).
- Unemployment data are downloaded monthly from [FRED](#).
- Case and hospital occupancy data are provided by Maryland Department of Health. Real-time data can be found on the Montgomery County [COVID-19 Surveillance Dashboard](#).
- Data on COVID-19 deaths are available through the [Maryland Department of Health](#) dashboard and ArcGIS platform.
- Data on hospitalizations and deaths by vaccination status are available on the [DHHS COVID-19 website](#).
- Vaccine data are downloaded from the [CDC website](#) each Tuesday morning. More detailed vaccine data are provided by the Maryland Department of Health Immunet database on a weekly basis.
- Data on county government coordinated testing and vaccinations are collected by DHHS daily.