

WELCOME VIRTUAL PUBLIC MEETING

Forest Glen Road Sidewalk

June 10, 2021

6:30PM



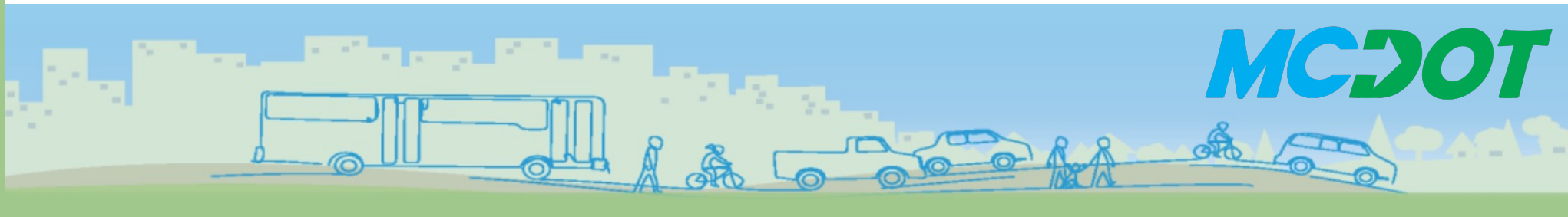
MC DOT

Virtual Public Meeting

- We are all learning how to conduct virtual community meetings so please bear with us.
- We are going to go over some basic controls to help you use the Zoom meeting format before we start the presentation.
- Please note that this meeting is being recorded.

The video will be posted on the project website after the meeting.

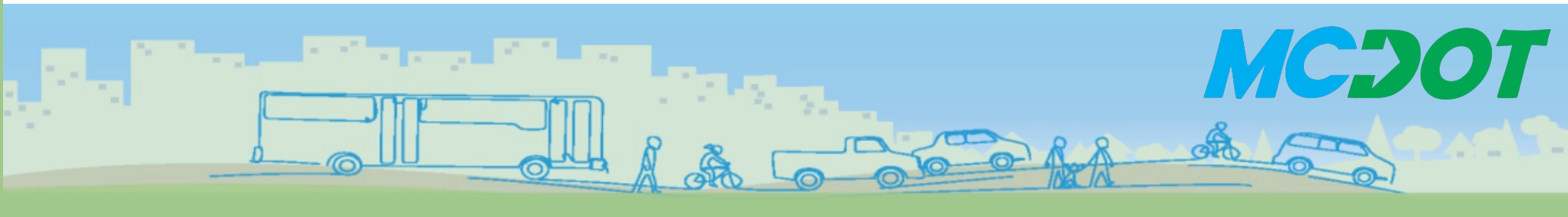
If you do not wish to have your voice or likeness recorded, please keep your camera off, and refrain from asking questions using the audio option. Instead, you can send your questions via the chat option.



Using Zoom

Muting

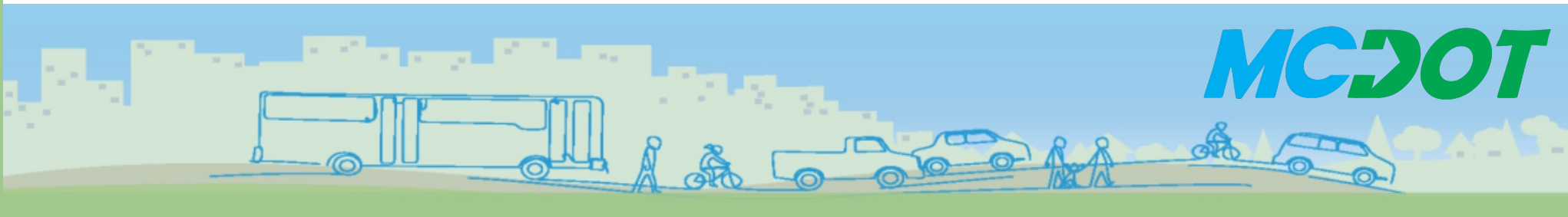
- Everyone is on mute. You cannot unmute yourself. We can unmute you during the Q&A time.
- To request to speak, you will need to use the **raise hand** feature. Once we unmute you, you may still need to click a pop-up menu to unmute yourself.
- If you have called in by phone, you can unmute yourself by dialing *6 once we unmute you.



Using Zoom (Cont'd)

Video

- Your camera is off by default. To ensure adequate bandwidth for this meeting, we request that you please keep your camera off during the meeting.



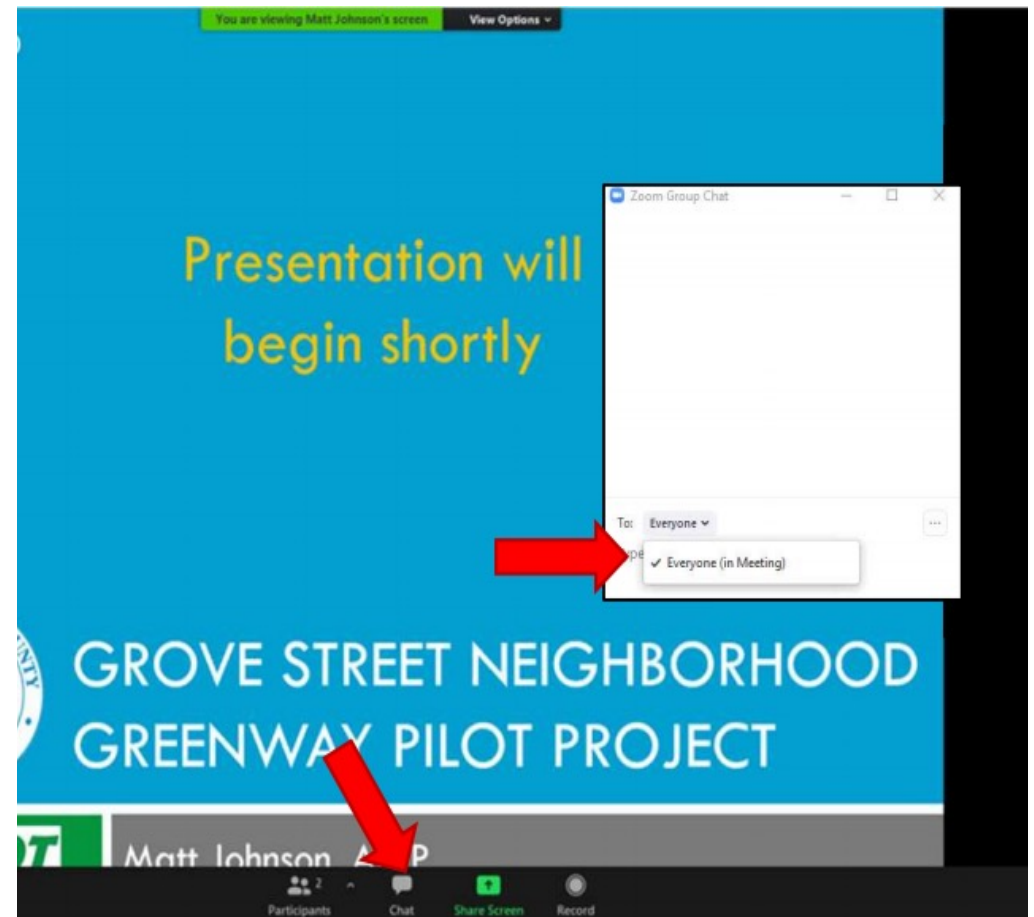
Using Zoom (Cont'd)

Ask a question (text)

- If you have a questions during the presentation, please sent it via chat.

To send a chat:

- ❑ Click “chat” at the bottom of the menu.
- ❑ In the “to” field, change the drop down to “Lori Main”.
- ❑ Type your question and send it.



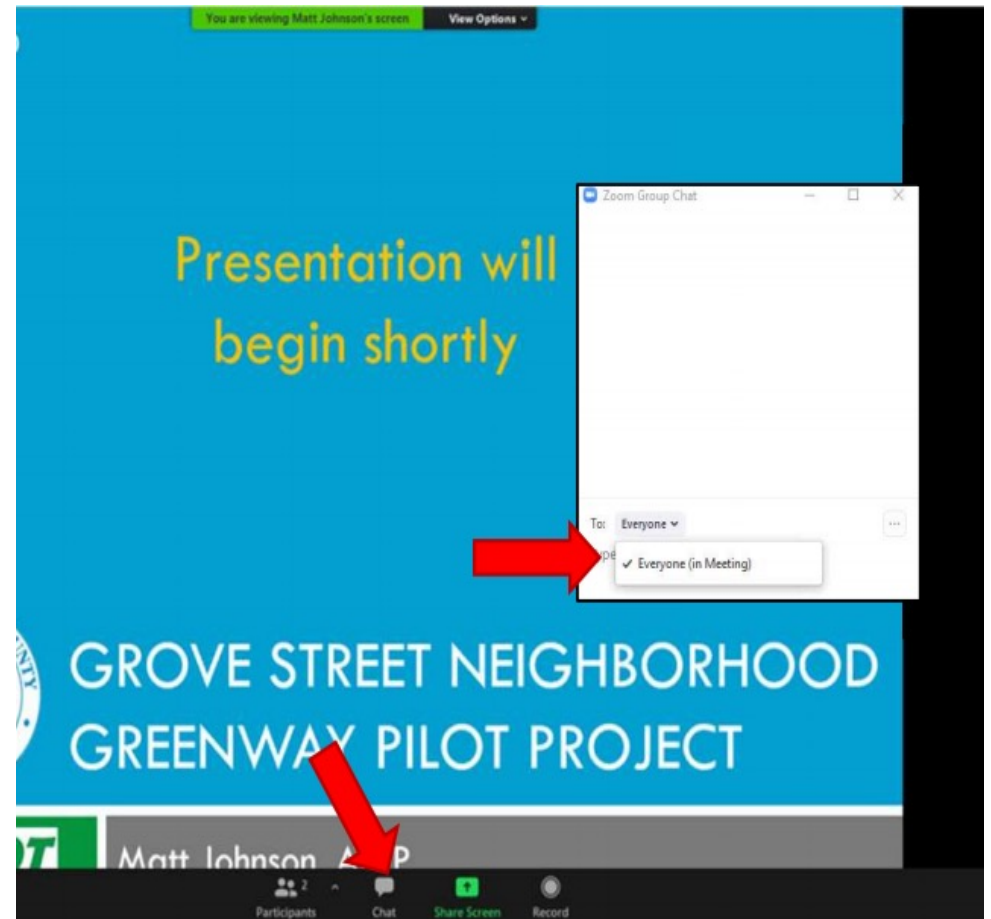
Using Zoom (Cont'd)

Ask a question (raise your hand)

- If you would like to speak to ask a question or make a comment, please **raise your hand**.

To raise your hand:

- ❑ Click “participants” at the bottom menu
- ❑ Click the blue “raise hand” button
- ❑ If you’ve dialed in by phone, dial *9

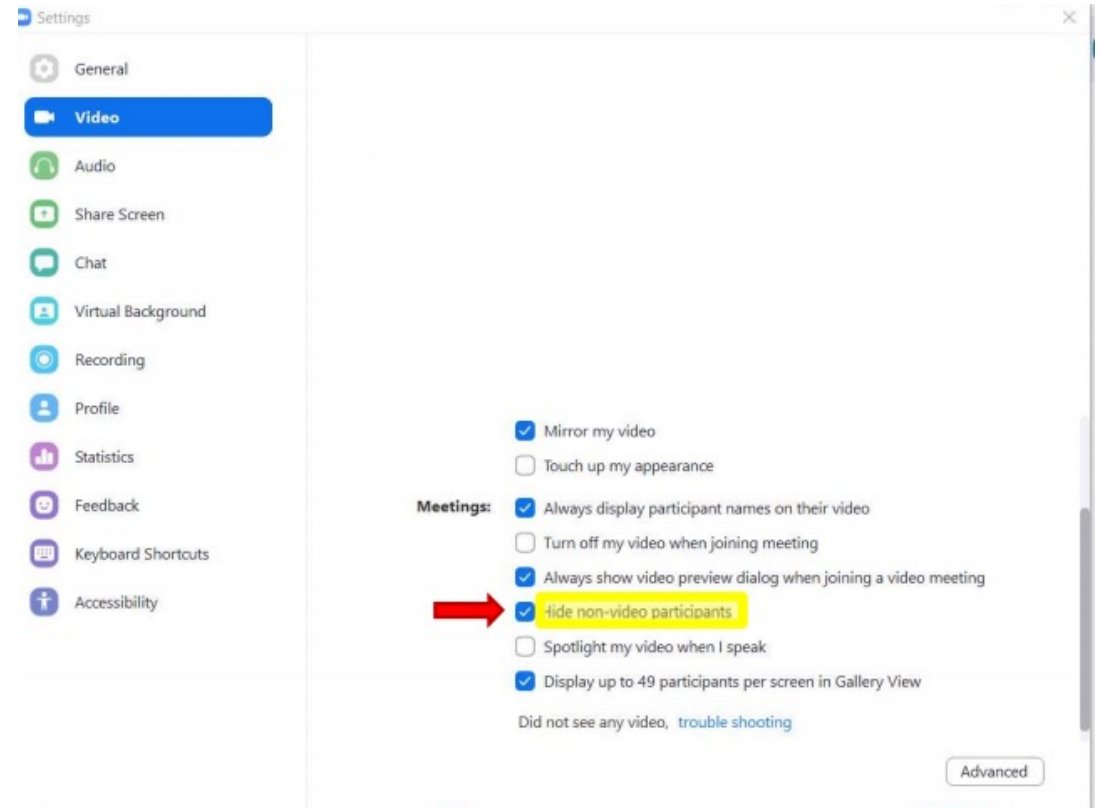


Using Zoom (Cont'd)

View

To change your view so that you only see people with cameras on:

- ❑ Click the up arrow next to “start video”
- ❑ Select “video settings”
- ❑ Make sure “Hide non-video participants” is checked





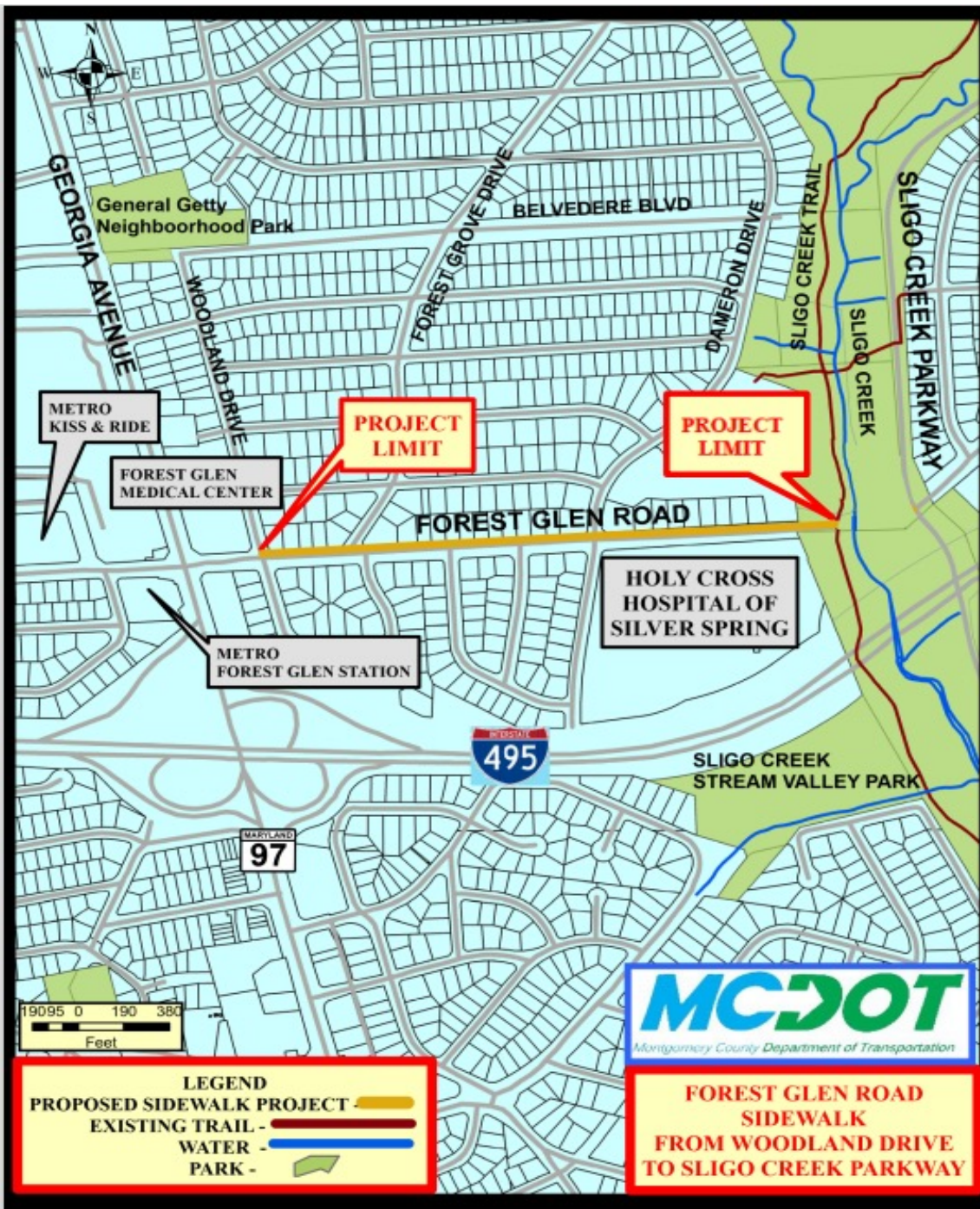
Outline

- Project Limits/Background
- Project Purpose
- Project Overview
- Conceptual Design
 - Typical Sections/Aerial Plan Views
- Project Schedule/Cost Estimate
- Q&A / Comments



Project Limits/ Background

- *November 2015*-Received request of the sidewalk construction along the north side of roadway.
- *May 2017*-Applied for Transportation Alternative Program (TAP) Grant for preliminary (35%) design.
- *July 2018*-Awarded TAP Grant.
- *October 2020*-Started the preliminary design.





Project Purpose

- Address **connectivity** and **safety** needs on Forest Glen Road.
- Connectivity to existing sidewalks, Sligo Creek Trail, Forest Glen Metro Station, Forest Glen Medical Center, Holy Cross Hospital and Sligo Creek Stream Valley Park.
- Enhance safety for pedestrians and bicyclists, in keeping with Montgomery County Vision Zero Action Plan.



Project Overview

Sidewalk Improvement

- North side of Forest Glen Road
- Woodland Drive to Sligo Creek Trail (Approx ½ mile)
- 6' wide concrete sidewalk
- 0'-6' wide grass buffer

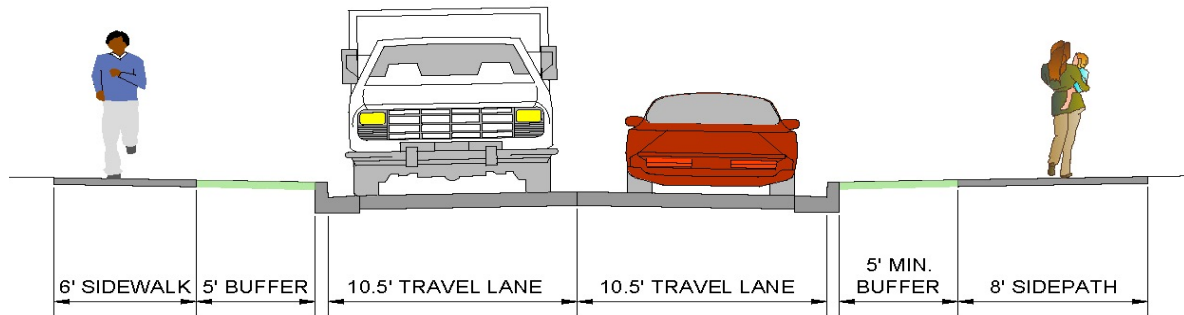
Bike Path Improvement

- South side of Forest Glen Road
- Eliminate existing Sharrow and on-road bike lane.
- Upgrade ex. sidepath to 8' width and addition of grass buffer

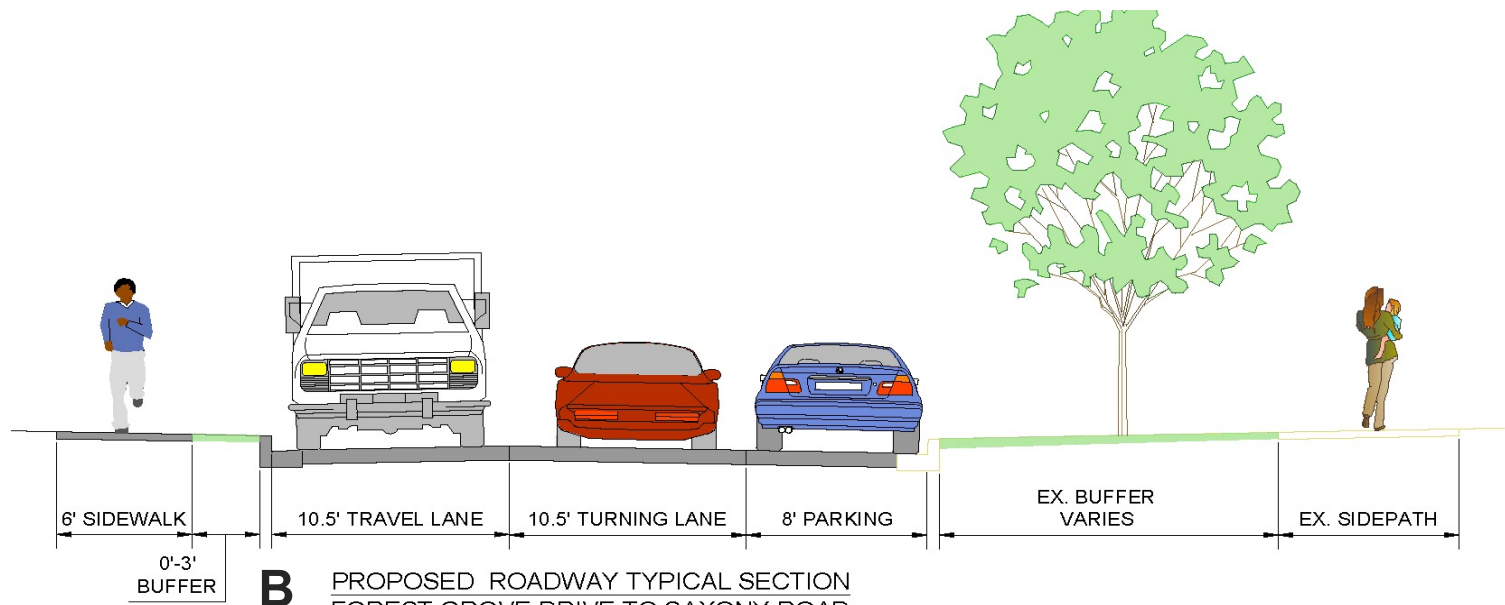


Conceptual Design

Typical Sections

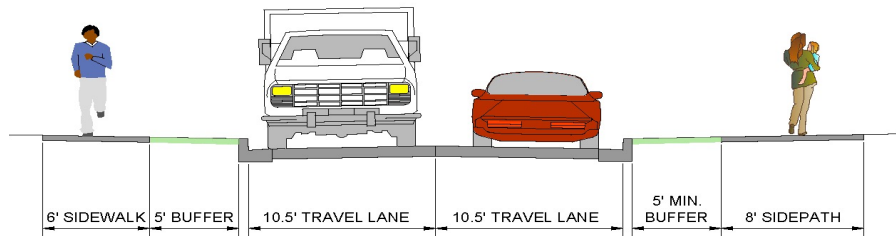
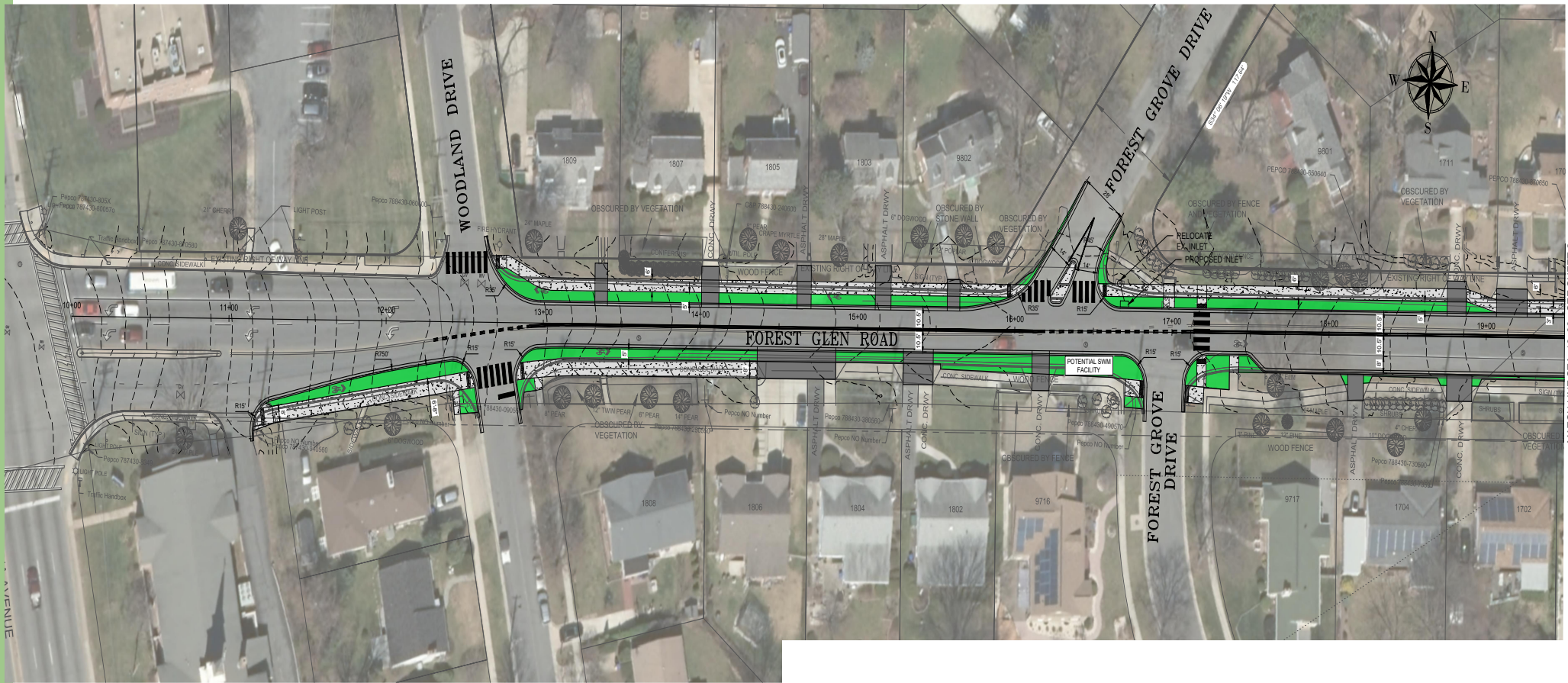


A PROPOSED ROADWAY TYPICAL SECTION
WOODLAND DRIVE TO FOREST GROVE DRIVE



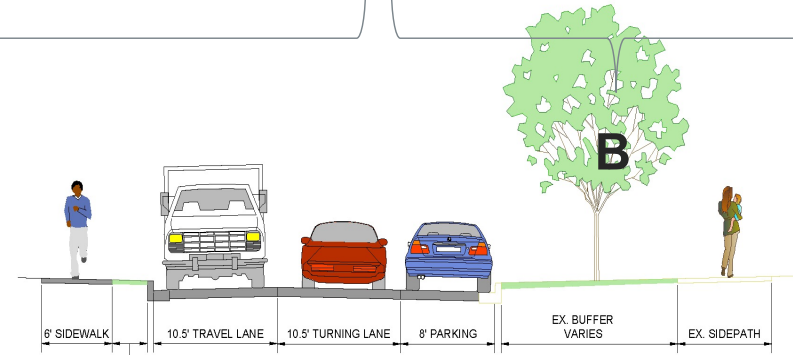
B PROPOSED ROADWAY TYPICAL SECTION
FOREST GROVE DRIVE TO SAXONY ROAD





A PROPOSED ROADWAY TYPICAL SECTION
WOODLAND DRIVE TO FOREST GROVE DRIVE

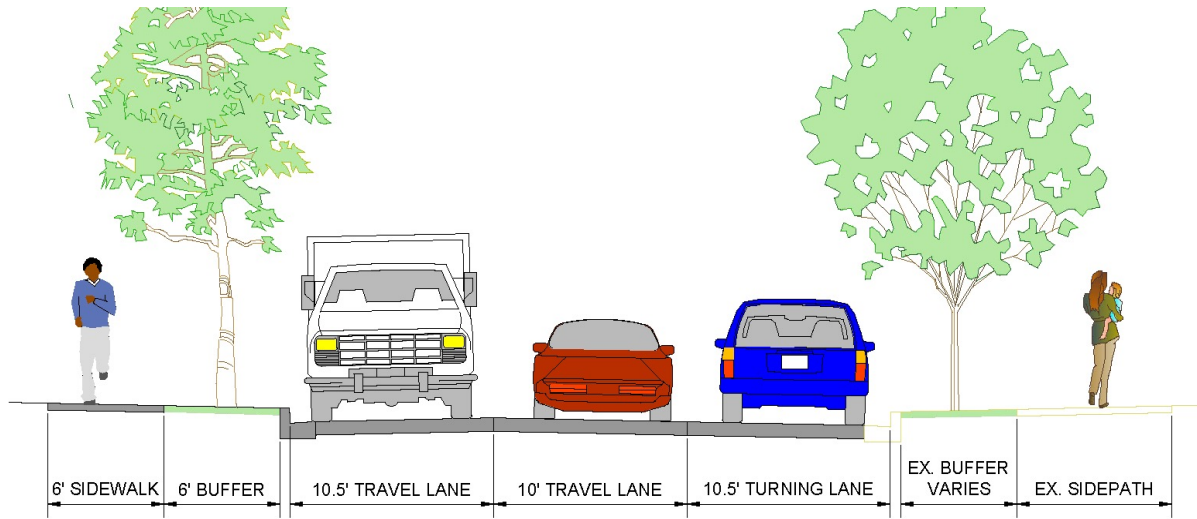
A



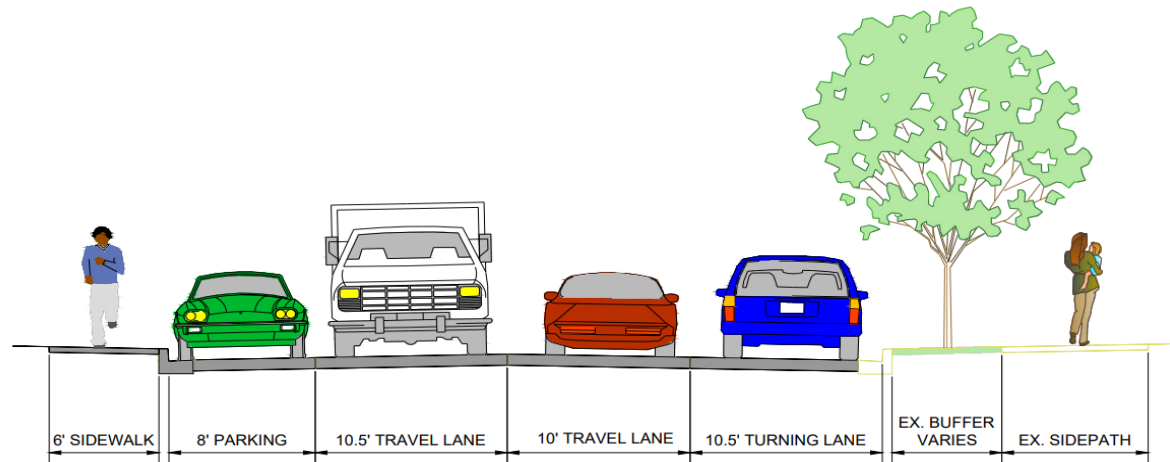
B PROPOSED ROADWAY TYPICAL SECTION
FOREST GROVE DRIVE TO SAXONY ROAD



Typical Sections



C PROPOSED ROADWAY TYPICAL SECTION
SAXONY ROAD TO DAMERON DRIVE



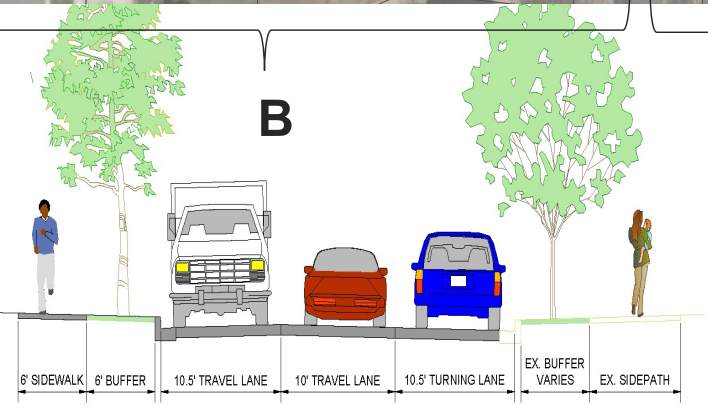
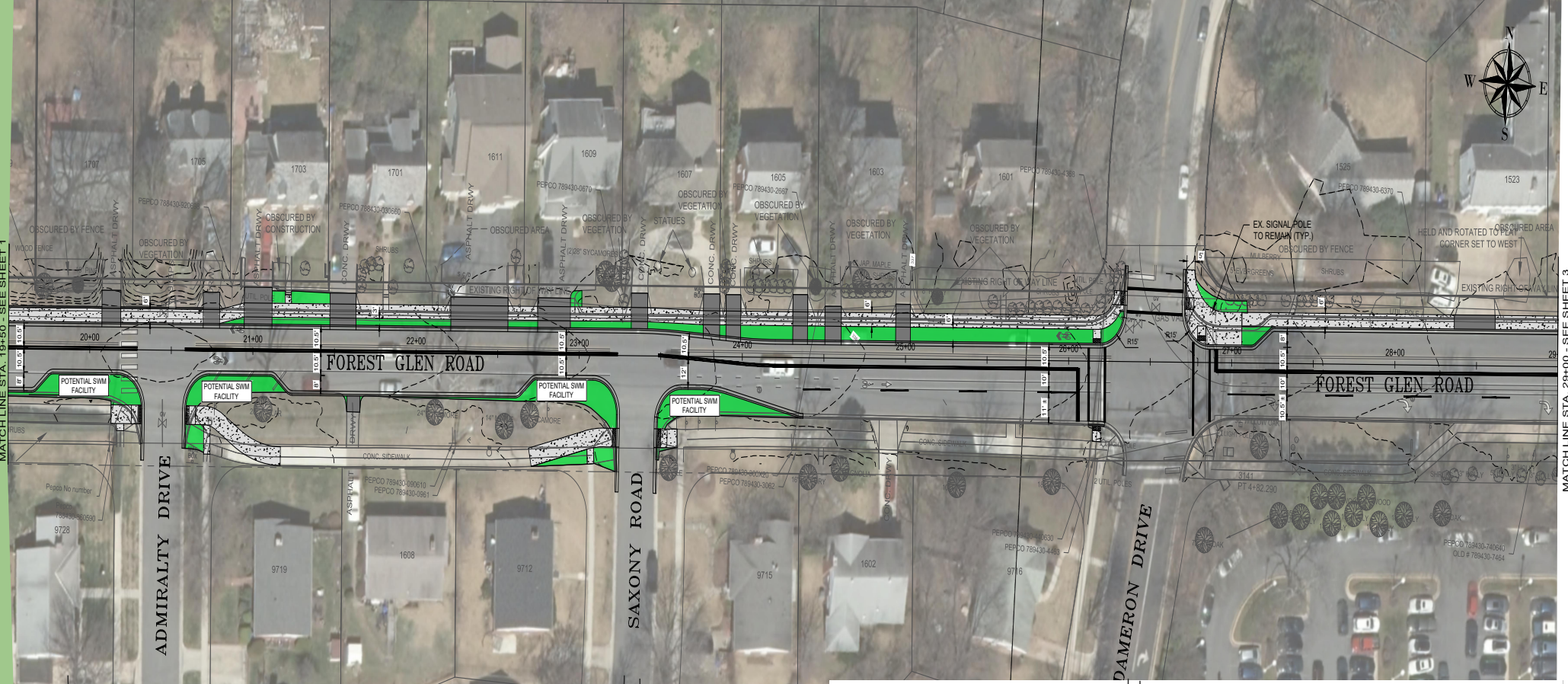
D PROPOSED ROADWAY TYPICAL SECTION
DAMERON DRIVE TO HOSPITAL ENTRANCE



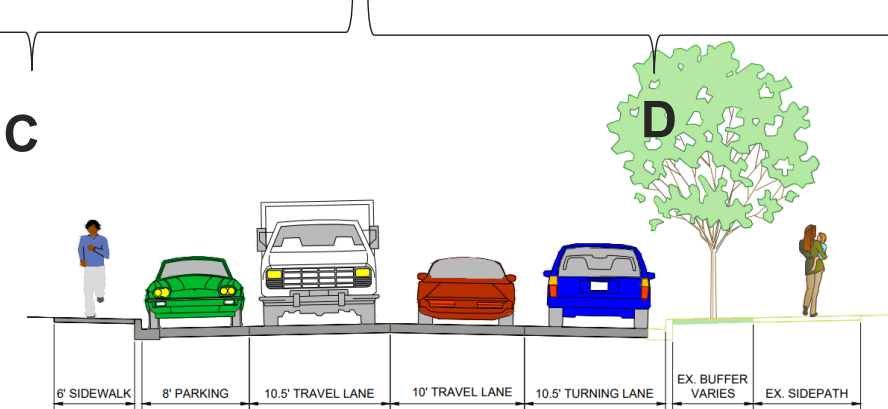


MATCHLINE STA. 19+50 - SEE SHEET 1

MATCHLINE STA. 29+00 - SEE SHEET 3



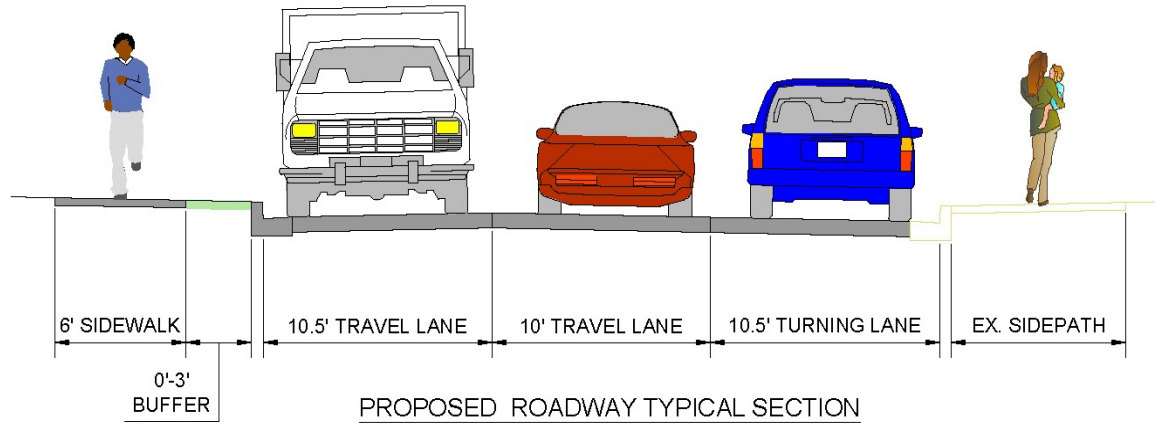
C PROPOSED ROADWAY TYPICAL SECTION
SAXONY ROAD TO DAMERON DRIVE



D PROPOSED ROADWAY TYPICAL SECTION
DAMERON DRIVE TO HOSPITAL ENTRANCE

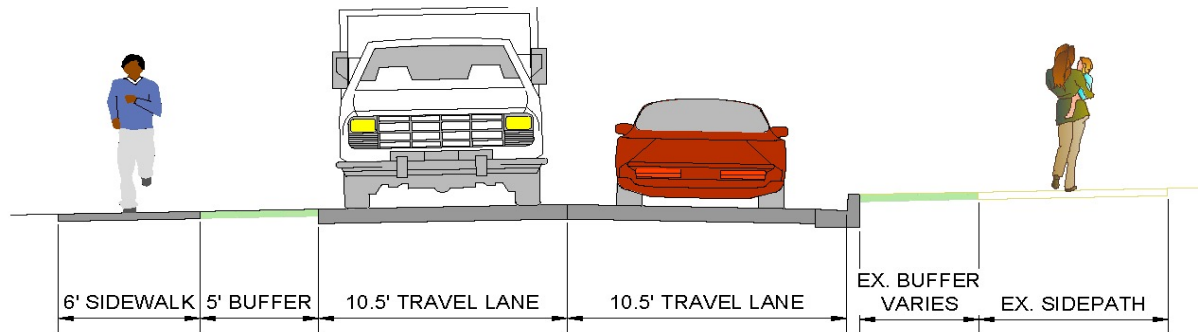


Typical Sections



PROPOSED ROADWAY TYPICAL SECTION
HOSPITAL ENTRANCE TO PHYSICIAN OFFICE ENTRANCE

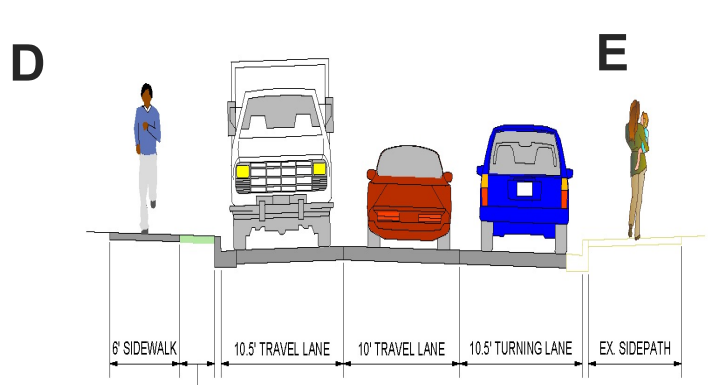
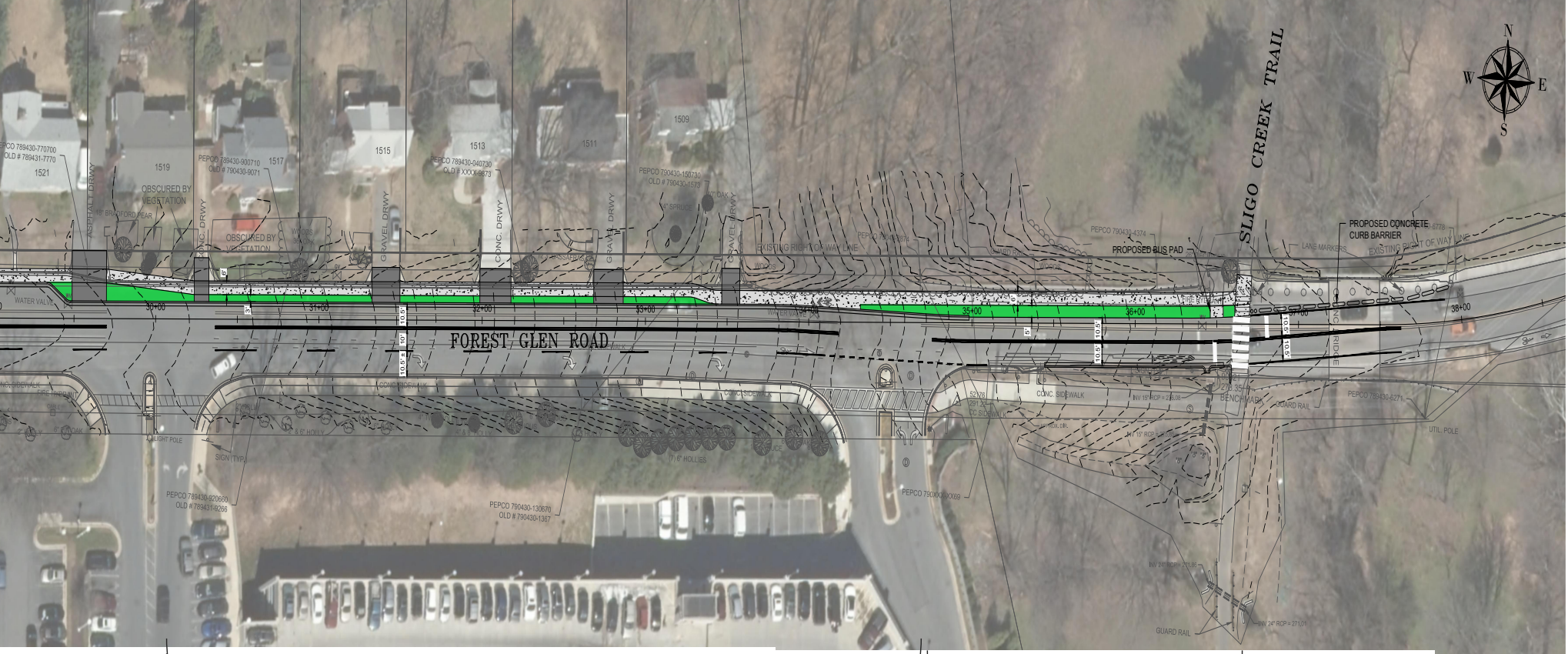
E



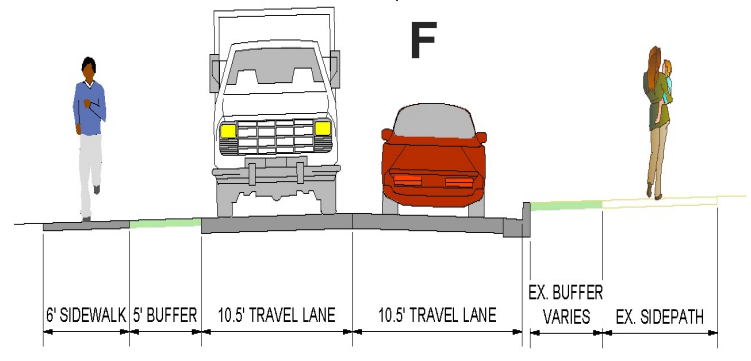
PROPOSED ROADWAY TYPICAL SECTION
PHYSICIAN OFFICE ENTRANCE TO SLIGO CREEK TRAIL

F



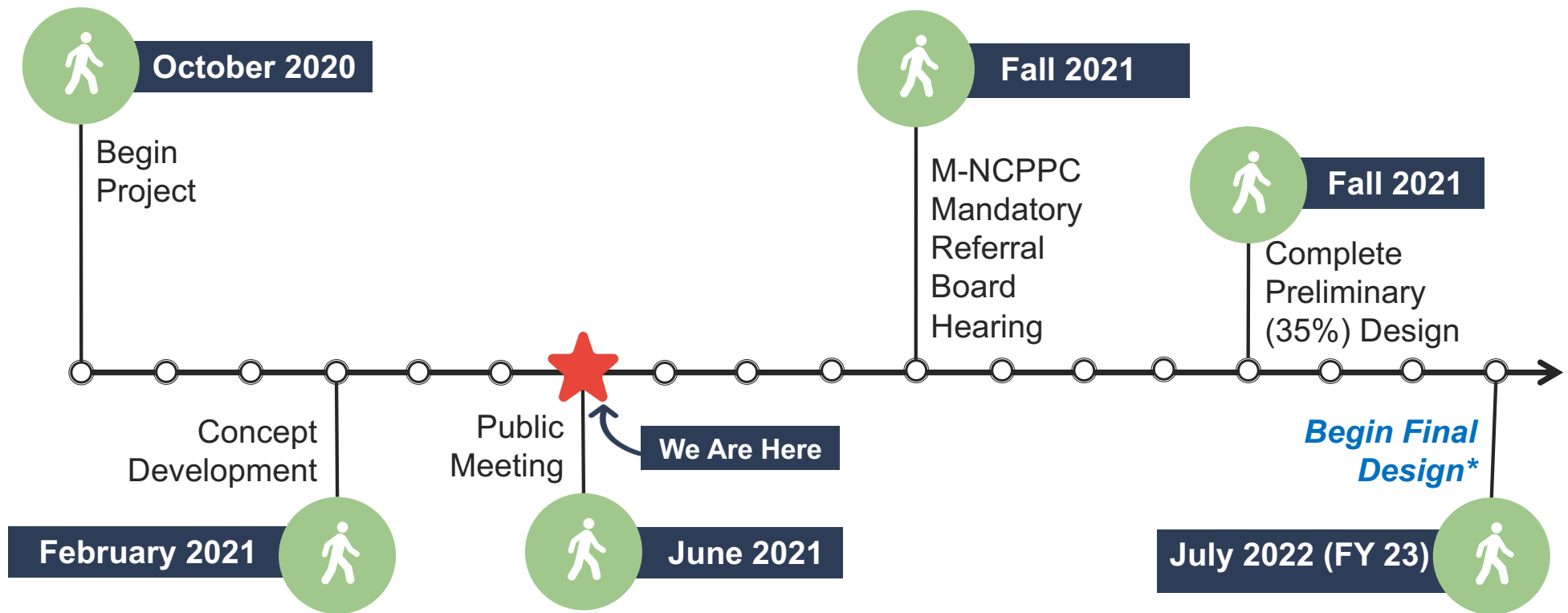


E PROPOSED ROADWAY TYPICAL SECTION
HOSPITAL ENTRANCE TO PHYSICIAN OFFICE ENTRANCE



F PROPOSED ROADWAY TYPICAL SECTION
PHYSICIAN OFFICE ENTRANCE TO SLIGO CREEK TRAIL

Project Schedule



**Only if the project budget approved by CE and the Council*





Project Cost Estimate

Engineering Design Cost	\$500K
Land Acquisition Cost	\$150K
Utility Relocation Cost	\$50K
<u>Construction Cost</u>	<u>\$1M</u>
<i>Total Project Estimate</i>	<i>\$1.5M</i>





Contact

Comments due by **July 9, 2021**



Rebecca Park, P.E.
Project Manager



240-777-7263



rebecca.park@
montgomerycountymd.gov



<https://www.montgomerycountymd.gov/dot-dte/projects/forestglenrd/index.html>



Questions or Comments?

