

# Fox Chapel Community Sidewalk Proposal

## Public Hearing Record

Wednesday, January 12, 2022, at 7:00 p.m.

### CONTENTS

Exhibit 1	Office of Management & Budget Sidewalk Program Minor Projects P506747
Exhibit 2	Project Vicinity Map
Exhibit 3	Public Right-of-Way Construction Impacts
Exhibit 4	Tree Report
Exhibit 5	MCDOT News Release and Washington Times Proof, each advertising the Public Hearing
Exhibit 6	Resident Comments Supporting the Proposal (all or a portion of the proposal)
Exhibit 7	Resident Comments Opposing the Proposal
Exhibit 8	Written Testimony
Exhibit 9	List of Attendees
Exhibit 10	Public Hearing Transcript



# Sidewalk Program Minor Projects

(P506747)

Category	Transportation	Date Last Modified	05/19/20
SubCategory	Pedestrian Facilities/Bikeways	Administering Agency	Transportation
Planning Area	Countywide	Status	Ongoing

## EXPENDITURE SCHEDULE (\$000s)

Cost Elements	Total	Thru FY19	Est FY20	Total 6 Years	FY 21	FY 22	FY 23	FY 24	FY 25	FY 26	Beyond 6 Years
Planning, Design and Supervision	10,663	5,478	878	4,307	434	735	1,017	520	761	840	-
Land	2,283	2,198	6	79	5	8	10	6	25	25	-
Site Improvements and Utilities	171	66	14	91	12	17	20	14	14	14	-
Construction	23,275	5,727	2,339	15,209	1,563	2,154	3,297	1,874	2,700	3,621	-
<b>TOTAL EXPENDITURES</b>	<b>36,392</b>	<b>13,469</b>	<b>3,237</b>	<b>19,686</b>	<b>2,014</b>	<b>2,914</b>	<b>4,344</b>	<b>2,414</b>	<b>3,500</b>	<b>4,500</b>	<b>-</b>

## FUNDING SCHEDULE (\$000s)

Funding Source	Total	Thru FY19	Est FY20	Total 6 Years	FY 21	FY 22	FY 23	FY 24	FY 25	FY 26	Beyond 6 Years
G.O. Bonds	36,316	13,469	3,161	19,686	2,014	2,914	4,344	2,414	3,500	4,500	-
State Aid	76	-	76	-	-	-	-	-	-	-	-
<b>TOTAL FUNDING SOURCES</b>	<b>36,392</b>	<b>13,469</b>	<b>3,237</b>	<b>19,686</b>	<b>2,014</b>	<b>2,914</b>	<b>4,344</b>	<b>2,414</b>	<b>3,500</b>	<b>4,500</b>	<b>-</b>

## APPROPRIATION AND EXPENDITURE DATA (\$000s)

Appropriation FY 21 Request	2,014	Year First Appropriation	FY67
Appropriation FY 22 Request	2,914	Last FY's Cost Estimate	27,792
Cumulative Appropriation	16,706		
Expenditure / Encumbrances	13,954		
Unencumbered Balance	2,752		

## PROJECT DESCRIPTION

This pedestrian access improvement program provides sidewalks on County-owned roads and some State-maintained roadways. Some funds from this project will go to support the Renew Montgomery program. The Department of Transportation maintains an official list of all outstanding sidewalk requests. Future projects are evaluated and selected from this list, which is continually updated with new requests. In addition, projects identified by the Citizens' Advisory Boards are placed on the list. One aspect of this project will focus on improving pedestrian walkability by creating a safer walking environment, utilizing selected engineering technologies, and ensuring Americans with Disabilities Act of 1990 (ADA) compliance.

## COST CHANGE

Reduction of \$400,000 in FY21. Increase in scope of \$500,000 in FY23 and \$500,000 in FY24. Also, added funding in FY25 and FY26

---

for this level of effort project.

## PROJECT JUSTIFICATION

In addition to connecting existing sidewalks, these projects increase pedestrian safety and facilitate walking to: Metrorail stations, bus stops, shopping and medical centers, employment, recreational, and school sites. This program also complements and augments the bikeways that are included in road projects.

## OTHER

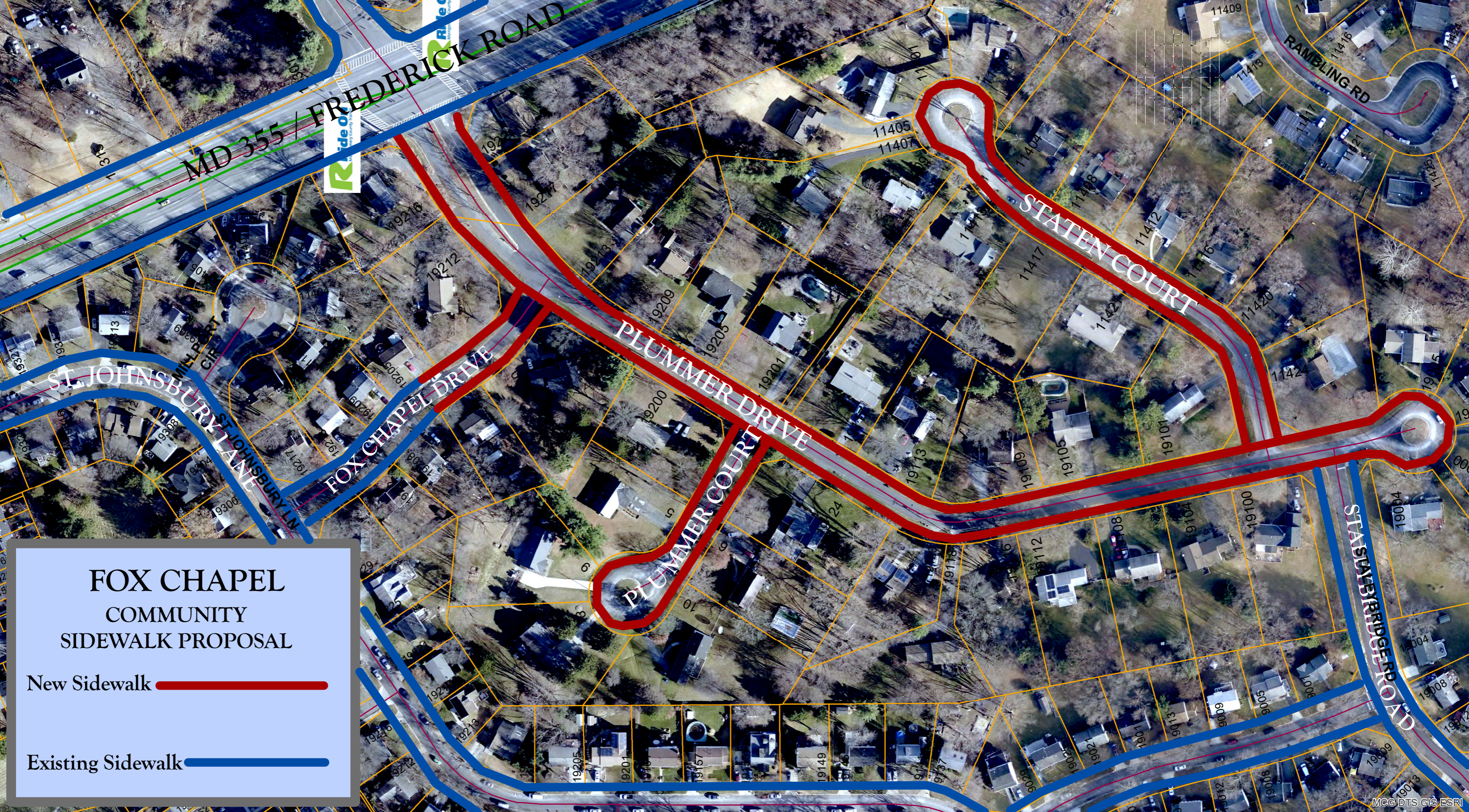
Projects originate from private citizens, citizen associations, and public agencies. Projects are evaluated and scheduled using sidewalk prioritization procedures. The project will help the County achieve its Vision Zero goals to reduce deaths and serious injuries on County Roadways to zero by 2030.

## DISCLOSURES

A pedestrian impact analysis has been completed for this project. Expenditures will continue indefinitely. The County Executive asserts that this project conforms to the requirement of relevant local plans, as required by the Maryland Economic Growth, Resource Protection and Planning Act.

## COORDINATION

Renew Montgomery Program, Maryland-National Capital Park and Planning Commission, Maryland DOT State Highway Administration, Montgomery County Public Schools, Washington Metropolitan Area Transit Authority, Sidewalk and Infrastructure Revitalization , Maryland Mass Transit Administration, Montgomery County Pedestrian Safety Advisory Committee, Commission on People with Disabilities



MD 355 / **FREDERICK ROAD**



**ST. JOHNSBURY LANE**

**MILLPORT CIRCLE**

**FOX CHAPEL DRIVE**


**PLUMMER DRIVE**

**STATON COURT**

**ST. JOHNSBURY LANE**

**RAMBLING RD**

**FOX CHAPEL  
COMMUNITY  
SIDEWALK PROPOSAL**

New Sidewalk 

Existing Sidewalk 

**Plummer Drive**  
**Public Right-of-Way Construction Impacts**

**Side: Both**  
**Limits: Maryland Route 355 to End**  
**Sidewalk Width : 5-foot-wide**  
**Sidewalk Material: Concrete**  
**Roadway Width: 24-ft to 48-ft open section**

ADDRESS	CONSTRUCTION IMPACTS
Plummer Drive @ Maryland Route 355	Remove and replace 2 existing ADA ramps.
19216 Plummer Drive	Construct a 4-foot-wide sidewalk at the back of curb transitioning to a 5-foot-wide sidewalk with a 0 to 3-ft variable greenspace. Remove and replace concrete driveway apron. May be necessary to realign swale and remove and replace pipe under driveway. Relocate mailbox. Relocate "Speed Limit" sign.
19212 Plummer Drive	Construct a 5-foot-wide sidewalk with a 0 to 3-ft variable greenspace. Remove asphalt driveway apron and replace with concrete. May be necessary to realign swale and remove and replace pipe under driveway. Relocate mailbox. Remove landscaping within County's public right of way as needed for sidewalk installation. May be necessary to raise drain structure and install a safety rail atop structure. Remove one 25-inch diameter Red Maple tree; replacement tree(s) will be planted.
Plummer Drive @ Fox Chapel Drive	Construct 2 ADA compliant ramps. Remove flex posts along radius.
19200 Fox Chapel Drive on Plummer Drive side of property	Construct a 5-foot-wide sidewalk with a 0 to 3-ft variable greenspace transitioning behind PEPCO pole #732487-6112. May be necessary to realign swale. May be necessary to raise drain structure and install a safety rail atop structure. Relocate "School Children" sign.
19200 Plummer Drive	Construct a 5-foot-wide sidewalk with a 0 to 3-ft variable greenspace. Remove asphalt driveway apron and replace with concrete. May be necessary to realign swale and remove and replace pipe under driveway. Relocate mailbox.

➤ **The above impacts are based on a preliminary investigation and are subject to change as field conditions warrant.**

## Plummer Drive

ADDRESS	CONSTRUCTION IMPACTS
Plummer Drive @ Plummer Court	Construct 2 ADA compliant ramps. Remove flex posts along radius.
19124 Plummer Drive	Construct a 5-foot-wide sidewalk with a 0 to 3-ft variable greenspace transitioning to a 1-foot-wide greenspace in front of PEPCO pole #732486-4385. Remove asphalt driveway apron and replace with concrete. May be necessary to realign swale and remove and replace pipe under driveway. Relocate mailbox.
19120 Plummer Drive	Construct a 5-foot-wide sidewalk with a 0 to 3-ft variable greenspace transitioning to a 4-foot-wide sidewalk and a 1-foot-wide greenspace in front of PEPCO pole #732486-3570. Remove asphalt driveway apron and replace with concrete. May be necessary to realign swale and remove and replace pipe under driveway. Relocate mailbox. Remove stones near roadway in County's public right of way.
19118 Plummer Drive	Construct a 5-foot-wide sidewalk with a 0 to 3-ft variable greenspace. Remove asphalt driveway apron and replace with concrete. May be necessary to realign swale and remove and replace pipe under driveway. Relocate mailbox.
19116 Plummer Drive	Construct a 5-foot-wide sidewalk with a 0 to 3-ft variable greenspace. Remove asphalt driveway apron and replace with concrete. May be necessary to realign swale and remove and replace pipe under driveway. Relocate mailbox.
19112 Plummer Drive	Construct a 5-foot-wide sidewalk with a 0 to 3-ft variable greenspace. Remove asphalt driveway apron and replace with concrete. May be necessary to realign swale and remove and replace pipe under driveway. Relocate mailbox. Adjust gas valve.
19108 Plummer Drive	Construct a 5-foot-wide sidewalk with a 0 to 3-ft variable greenspace. Remove asphalt driveway apron and replace with concrete. May be necessary to realign swale and remove and replace pipe under driveway. Relocate mailbox.

➤ **The above impacts are based on a preliminary investigation and are subject to change as field conditions warrant.**

## Plummer Drive

ADDRESS	CONSTRUCTION IMPACTS
19104 Plummer Drive	<p>Construct a 5-foot-wide sidewalk with a 0 to 3-ft variable greenspace transitioning to a 4-foot-wide sidewalk and 1-foot-wide greenspace in front of PEPCO pole #732486-4129.</p> <p>Remove asphalt driveway apron and replace with concrete.</p> <p>May be necessary to realign swale and remove and replace pipe under driveway.</p> <p>Relocate mailbox.</p>
19100 Plummer Drive	<p>Construct a 5-foot-wide sidewalk with a 0 to 3-ft variable greenspace.</p> <p>Remove asphalt driveway apron and replace with concrete.</p> <p>May be necessary to realign swale and remove and replace pipe under driveway.</p> <p>Relocate mailbox.</p> <p>Relocate “School Children” sign.</p>
Plummer Drive @ Staleybridge Road	<p>Remove and replace 2 existing ADA ramps.</p>
19004 Plummer Drive	<p>Construct a 5-foot-wide sidewalk with a 0 to 3-ft variable greenspace transitioning to a 4-foot-wide sidewalk at utility pole #4508.</p> <p>Remove asphalt driveway apron and replace with concrete.</p> <p>May be necessary to realign swale and remove and replace pipe under driveway.</p> <p>May be necessary to raise drain structure and install a safety rail atop structure.</p> <p>Remove bushes within County’s public right of way in path of sidewalk.</p> <p>Relocate mailbox.</p>
19000 Plummer Drive	<p>Construct a 5-foot-wide sidewalk with a 0 to 3-ft variable greenspace.</p> <p>Remove asphalt driveway apron and replace with concrete.</p> <p>May be necessary to realign swale and remove and replace pipe under driveway.</p> <p>Relocate mailbox.</p> <p>Adjust water meter.</p>
19001 Plummer Drive	<p>Construct a 5-foot-wide sidewalk with a 0 to 3-ft variable greenspace transitioning to a 4-foot-wide sidewalk at PEPCO pole #732486-5302 .</p> <p>Remove asphalt driveway apron and replace with concrete.</p> <p>May be necessary to realign swale and remove and replace pipe under driveway.</p> <p>Relocate mailbox.</p> <p>Adjust water meter.</p>

➤ **The above impacts are based on a preliminary investigation and are subject to change as field conditions warrant.**

## Plummer Drive

ADDRESS	CONSTRUCTION IMPACTS
19005 Plummer Drive	<p>Construct a 5-foot-wide sidewalk with a 0 to 3-ft variable greenspace.  Remove asphalt driveway apron and replace with concrete.  May be necessary to realign swale and remove and replace pipe under driveway.  Relocate mailbox.  Adjust manhole.</p>
11424 Staten Court on Plummer Drive side of property	<p>Construct a 5-foot-wide sidewalk with a 0 to 3-ft variable greenspace.  May be necessary to realign swale.  Relocate “Yield” sign.  Adjust manhole.  Remove stones along roadway within County’s public right of way.  May be necessary to raise drain structure and install a safety rail atop structure.</p>
Plummer Drive @ Staten Court	<p>Construct 2 ADA compliant ramps.</p>
19101 Plummer Drive	<p>Construct a 5-foot-wide sidewalk with a 0 to 3-ft variable greenspace.  May be necessary to realign swale.  Remove tree logs along roadway within County’s public right of way.  May be necessary to raise drain structure and install a safety rail atop structure.</p>
19105 Plummer Drive	<p>Construct a 5-foot-wide sidewalk with a 0 to 3-ft variable greenspace.  Remove asphalt driveway apron and replace with concrete.  May be necessary to realign swale and remove and replace pipe under driveway.  Relocate mailbox.  Adjust manhole.</p>
19109 Plummer Drive	<p>Construct a 5-foot-wide sidewalk with a 0 to 3-ft variable greenspace transitioning to a 4-foot-wide sidewalk in front of fire hydrant.  Remove asphalt driveway apron and replace with concrete.  May be necessary to realign swale and remove and replace pipe under driveway.  Relocate mailbox.  Remove stones along roadway and mailbox within County’s public right of way.  County arborist will determine impact on a 36 inch in diameter tree located within swale. Replacement may be planted if removed.</p>
19113 Plummer Drive	<p>Construct a 5-foot-wide sidewalk with a 0 to 3-ft variable greenspace.  Remove asphalt driveway apron and replace with concrete.  May be necessary to realign swale and remove and replace pipe under driveway.  Relocate mailbox.  Adjust manhole.</p>

➤ **The above impacts are based on a preliminary investigation and are subject to change as field conditions warrant.**



## Plummer Drive

ADDRESS	CONSTRUCTION IMPACTS
19117 Plummer Drive	<p>Construct a 5-foot-wide sidewalk with a 0 to 3-ft variable greenspace.  Remove stamped concrete driveway apron and replace with concrete.  May be necessary to realign swale and remove and replace pipe under driveway.  Relocate mailbox.</p>
19201 Plummer Drive	<p>Construct a 5-foot-wide sidewalk with a 0 to 3-ft variable greenspace transitioning to a 4-foot-wide sidewalk in front of fire hydrant.  Remove asphalt driveway apron and replace with concrete.  May be necessary to realign swale and remove and replace concrete headwall and pipe under driveway  Relocate mailbox.  Remove stones along roadway within County's public right of way.</p>
19205 Plummer Drive	<p>Construct a 5-foot-wide sidewalk with a 0 to 3-ft variable greenspace.  Remove asphalt driveway apron and replace with concrete.  May be necessary to realign swale and remove and replace pipe under driveway.  Relocate mailbox.  Adjust manhole.</p>
19209 Plummer Drive	<p>Construct a 5-foot-wide sidewalk with a 0 to 3-ft variable greenspace.  Remove asphalt driveway apron and replace with concrete.  May be necessary to realign swale and remove and replace pipe under driveway.  Relocate mailbox.  Remove solar lights in path of sidewalk within County's public right of way.</p>
19213 Plummer Drive	<p>Construct a 5-foot-wide sidewalk with a 0 to 3-ft variable greenspace transitioning to a 4-foot-wide sidewalk and 1-foot-wide greenspace at utility pole #812.  Remove asphalt driveway apron and replace with concrete.  May be necessary to realign swale and remove and replace pipe under driveway.  Relocate mailbox.  Remove stones along roadway and mailbox within County's public right of way.  Adjust manhole.</p>
19217 Plummer Drive	<p>Construct a 5-foot-wide sidewalk with a 0 to 3-ft variable greenspace transitioning to a 4-foot-wide sidewalk and a 1-foot-wide greenspace at utility pole #M8125.  Remove asphalt driveway apron and replace with concrete.  May be necessary to realign swale and remove and replace concrete headwall and pipe under driveway  Relocate mailbox.  Remove stones and bushes within County's public right of way as needed.  Adjust manhole.</p>

➤ **The above impacts are based on a preliminary investigation and are subject to change as field conditions warrant.**

## Plummer Drive

ADDRESS	CONSTRUCTION IMPACTS
19221 Plummer Drive	<p>Construct a 5-foot-wide sidewalk at back of curb with signal control box being incorporated in sidewalk.</p> <p>Sidewalk will transition to 4-feet in width at fire hydrant.</p> <p>Remove and replace approximately 100 feet of existing curb and gutter will reducing roadway width slightly.</p> <p>Install an opening in curb to allow for water drainage.</p> <p>Remove and replace concrete driveway apron.</p> <p>Relocate mailbox.</p> <p>A second signal control box located at ADA ramp needs adjustment.</p>

- **The above impacts are based on a preliminary investigation and are subject to change as field conditions warrant.**

## **Fox Chapel Drive**

### **Public Right-of-Way Construction Impacts**

**Side: Both**

**Limits: Plummer Drive to existing**

**Sidewalk Width : 5 Ft**

**Sidewalk Material: Concrete**

**Roadway Width: 20 ft – 38 ft open section and curb and gutter**

ADDRESS	CONSTRUCTION IMPACTS
<b>Fox Chapel Drive @ Plummer Drive</b>	<b>Construct 2 ADA compliant ramps.</b>
<b>19212 Plummer Drive on Fox Chapel Drive side of property</b>	<b>Construct a 5-foot sidewalk with a 0 to 3-foot variable greenspace. May be necessary to realign swale. A retaining wall may be needed in the area adjacent to 19205 Fox Chapel Drive.</b>
<b>19205 Fox Chapel Drive</b>	<b>Construct a 5-foot sidewalk connecting to existing driveway and transitioning between unmarked utility pole and fire hydrant. May be necessary to realign swale. A retaining wall may be needed in the area adjacent to 19212 Plummer Drive.</b>
<b>19204 Fox Chapel Drive</b>	<b>Construct a 5-foot sidewalk connecting to existing sidewalk. Remove asphalt driveway apron and replace with concrete. May be necessary to realign swale. Relocate mailbox.</b>
<b>19212 Plummer Drive on Fox Chapel Drive side of property</b>	<b>Construct a 5-foot sidewalk with a 0 to 3-foot variable greenspace. Remove asphalt driveway apron and replace with concrete. May be necessary to realign swale and remove and replace pipe under driveway. Relocate mailbox.</b>

➤ **The above impacts are based on a preliminary investigation and are subject to change as field conditions warrant.**

**Plummer Court**  
**Public Right-of-Way Construction Impacts**

**Side: Both**  
**Limits: Cul de Sac**  
**Sidewalk Width : 5 Ft**  
**Sidewalk Material: Concrete**  
**Roadway Width: 20 ft open section**

ADDRESS	CONSTRUCTION IMPACTS
<b>Plummer Court @ Plummer Drive</b>	<b>Construct 2 ADA compliant ramps.</b>
<b>19200 Plummer Drive on Plummer Court side of property</b>	<b>Construct a 5-foot-wide sidewalk with a 0 to 3-ft variable greenspace. May be necessary to realign swale.</b>
<b>5 Plummer Court</b>	<b>Construct a 5-foot-wide sidewalk with a 0 to 3-ft variable greenspace transitioning to a 4-foot-wide sidewalk and 1-foot-wide greenspace at PEPCO pole #732487-4004. Remove asphalt driveway apron and replace with concrete. May be necessary to realign swale and remove and replace pipe under driveway. Relocate mailbox.</b>
<b>9 Plummer Court</b>	<b>Construct a 5-foot-wide sidewalk with a 0 to 3-ft variable greenspace. Remove and replace concrete driveway apron. May be necessary to realign swale and remove and replace pipe under driveway. Relocate mailbox.</b>
<b>13 Plummer Court</b>	<b>Construct a 5-foot-wide sidewalk with a 0 to 3-ft variable greenspace. Remove paver driveway apron and replace with concrete. May be necessary to realign swale and remove and replace pipe under driveway. Remove brick mailbox.</b>
<b>10 Plummer Court</b>	<b>Construct a 5-foot-wide sidewalk with a 0 to 3-ft variable greenspace. Remove asphalt driveway apron and replace with concrete. May be necessary to realign swale and remove and replace pipe under driveway. Relocate mailbox.</b>

➤ **The above impacts are based on a preliminary investigation and are subject to change as field conditions warrant.**

## Plummer Court

ADDRESS	CONSTRUCTION IMPACTS
<b>6 Plummer Court</b>	<b>Construct a 5-foot-wide sidewalk with a 0 to 3-ft variable greenspace transitioning to a 3-foot-wide sidewalk in front of PEPCO pole #732487-3007 and a 4-foot-wide sidewalk and 1-foot-wide greenspace at PEPCO pole #732487-3900.</b> <b>Remove asphalt driveway apron and replace with concrete.</b> <b>May be necessary to realign swale and remove and replace pipe under driveway.</b> <b>Remove brick mailbox.</b>
<b>19124 Plummer Drive on Plummer Court side of property</b>	<b>Construct a 5-foot-wide sidewalk with a 0 to 3-ft variable greenspace.</b> <b>May be necessary to realign swale.</b>

- **The above impacts are based on a preliminary investigation and are subject to change as field conditions warrant.**

**Staten Court**  
**Public Right-of-Way Construction Impacts**

**Side: Both**  
**Limits: Cul-de-Sac**  
**Sidewalk Width : 5 Ft**  
**Sidewalk Material: Concrete**  
**Roadway Width: 20-ft open section**

ADDRESS	CONSTRUCTION IMPACTS
<b>Staten Court @ Plummer Drive</b>	<b>Construct 2 ADA compliant ramps.</b>
<b>11424 Staten Court</b>	<b>Construct a 5-foot-wide sidewalk with a 0 to 3-ft variable greenspace. Remove asphalt driveway apron and replace with concrete. May be necessary to realign swale and remove and replace pipe under driveway. Relocate mailbox. Relocate “No Outlet” signs.</b>
<b>11420 Staten Court</b>	<b>Construct a 5-foot-wide sidewalk with a 0 to 3-ft variable greenspace transitioning to 4-foot-wide sidewalk and a 1-foot-wide greenspace in front of PEPCO pole #732486-6025. Remove asphalt driveway apron and replace with concrete. May be necessary to realign swale and remove and replace pipe under driveway. Relocate mailbox.</b>
<b>11416 Staten Court</b>	<b>Construct a 5-foot-wide sidewalk with a 0 to 3-ft variable greenspace. Remove asphalt driveway apron and replace with concrete. May be necessary to realign swale and remove and replace pipe under driveway. Relocate mailbox. Remove landscaping within County’s public right of way in path of sidewalk.</b>
<b>11412 Staten Court on both sides of property</b>	<b>Construct a 5-foot-wide sidewalk with a 0 to 3-ft variable greenspace. Remove asphalt driveway apron and replace with concrete. May be necessary to realign swale and remove and replace pipe under driveway. Relocate mailbox and remove fencing around mailbox. Adjust Verizon box.</b>
<b>11408 Staten Court on both sides of property</b>	<b>Construct a 5-foot-wide sidewalk with a 0 to 3-ft variable greenspace. Remove asphalt driveway apron and replace with concrete. May be necessary to realign swale and remove and replace pipe under driveway. Relocate mailbox.</b>

➤ **The above impacts are based on a preliminary investigation and are subject to change as field conditions warrant.**

## Staten Court

ADDRESS	CONSTRUCTION IMPACTS
11404 Staten Court	<p>Construct a 5-foot-wide sidewalk with a 0 to 3-ft variable greenspace.            Remove asphalt driveway apron and replace with concrete.            May be necessary to realign swale and remove and replace pipe under driveway.            Relocate mailbox.            Remove landscaping and hardscaping within County's public right of way in path of sidewalk.</p>
11400 Staten Court	<p>Construct a 5-foot-wide sidewalk with a 0 to 3-ft variable greenspace.            Remove asphalt driveway apron and replace with concrete.            May be necessary to realign swale and remove and replace pipe under driveway.            Relocate mailbox.            Remove landscaping and hardscaping within County's public right of way in path of sidewalk.</p>
11401 Staten Court	<p>Construct a 5-foot-wide sidewalk with a 0 to 3-ft variable greenspace transitioning behind pole #10098.            Remove asphalt driveway apron and replace with concrete.            May be necessary to realign swale and remove and replace pipe under driveway.            Relocate mailbox.            Remove one 49-inch in diameter Silver Maple Tree, replacement trees may be planted.</p>
11405 Staten Court on both sides of property	<p>Construct a 5-foot-wide sidewalk with a 0 to 3-ft variable greenspace.            Remove asphalt driveway apron and replace with concrete.            May be necessary to realign swale and remove and replace pipe under driveway.            Relocate mailbox.</p>
11407 Staten Court	<p>Construct a 5-foot-wide sidewalk with a 0 to 3-ft variable greenspace.            Remove asphalt driveway apron and replace with concrete.            May be necessary to realign swale and remove and replace pipe under driveway.            Relocate mailbox.            Remove hardscaping in County's public right of way in path of sidewalk.</p>
11409 Staten Court	<p>Construct a 5-foot-wide sidewalk with a 0 to 3-ft variable greenspace.            Remove asphalt driveway apron and replace with concrete.            May be necessary to realign swale and remove and replace pipe under driveway.            Relocate mailbox.            Remove hardscaping in County's public right of way in path of sidewalk.</p>
11413 Staten Court	<p>Construct a 5-foot-wide sidewalk with a 0 to 3-ft variable greenspace transitioning to a 3-foot-wide sidewalk with a 1-foot-wide greenspace in front of PEPCO pole #732486-8563.            Remove and replace concrete driveway apron.            May be necessary to realign swale and remove and replace pipe under driveway.            Relocate mailbox.</p>

➤ **The above impacts are based on a preliminary investigation and are subject to change as field conditions warrant.**

## Staten Court

ADDRESS	CONSTRUCTION IMPACTS
<b>114121 Staten Court</b>	<b>Construct a 5-foot-wide sidewalk with a 0 to 3-ft variable greenspace transitioning to a 3-foot-wide sidewalk with a 1-foot-wide greenspace in front of PEPCO pole #732486-7348.</b> <b>Remove asphalt driveway apron and leadwalk within County's public right of way and replace with concrete.</b> <b>May be necessary to realign swale and remove and replace pipe under driveway.</b> <b>Remove bush within County's public right of way at driveway.</b> <b>Relocate mailbox.</b>
<b>19101 Plummer Drive on Staten Court side of property</b>	<b>Construct a 5-foot-wide sidewalk with a 0 to 3-ft variable greenspace.</b> <b>Remove asphalt driveway apron and replace with concrete.</b> <b>May be necessary to raise drain structure and install a safety rail atop.</b> <b>May be necessary to realign swale and remove and replace pipe under driveway.</b> <b>Relocate mailbox.</b> <b>Relocate street sign.</b> <b>Remove landscaping and hardscaping in County's public right of way in path of sidewalk.</b>

- **The above impacts are based on a preliminary investigation and are subject to change as field conditions warrant.**



Tree Protection - new sidewalk 5.24.21  
 Plummer Dr Rev 1 10.12.21  
**\*All root pruning shall be done to a maximum depth of 6"**  
**DBH = diameter (in.) at breast height (4.5 ft above ground)**  
**Location: F = front, S = side, R = rear, I = island, M = Median, O = Opposite, P = Private, ms = multi-stem**  
**Pruning: s/w = sidewalk, elev = elevation pruning, DW = dead wood removal, d/w = driveway**  
**cli - clear light, csi = clear sign, cpt = clear private tree, clh = clear house, rd = road**  
**Tree Protection: F = fencing required, n/a = no action**

**Note:** refer to *Tree Protection Requirements For The Department Of Transportation* for Standard Tree Protection Measures  
**Note:** Inspection of worksite tree protection measures required by MC-DOT Arborist prior to construction activities  
**Note:** ROW not to be utilized for staging area unless otherwise permitted by MC-DOT Arborist prior to construction activities

ADDRESS	SPECIES	LOCATION	DBH	RECOMMENDATIONS
<b>Staten Ct</b>				
11408	Silver Maple	3F-P	34	F, Air Excavation Required
11416	Silver Maple	1F-P	25	F, Root Prune
11424	Red Maple	1F-P	27	F, Root Prune
11424	Willow Oak	3S-P	37	F, Root Prune
11421	Red Maple	1F-P	46	F, Root Prune
11409	Crapemyrtle	1F	16ms	F
11407	Smoketree	1F	12	F
11401	Silver Maple	1F	49	<b>REMOVE:</b> Proposed construction would compromise health/structural stability of tree
<b>Plummer Ct</b>				
6	Sawtooth Oak	2F-P	26	F
10	Blue Atlas Cedar	1F-P	21	F
<b>Plummer Dr</b>				
19004	Silver Maple	1F	66	F, Air Excavation Required
19004	Spruce	2F	13	Root prune, elevated 8' over proposed s/w
19100	Willow Oak	1F	47	F, Air Excavation Required, elevate 8' over proposed s/w
19108	Spruce	1F-P	16	F
19108	Spruce	2F-P	17	F
19112	Willow Oak	2F-P	50	F, Air Excavation Required
19116	Willow Oak	1F	46	F, Air Excavation Required, elevate 8' over proposed s/w
19120	Callery Pear	1F-P	23	F
19120	Crapemyrtle	2F	12ms	F
19120	Crapemyrtle	3F-P	12ms	F
19120	Crapemyrtle	4F	8	F
19124	Crapemyrtle	1F-P	23ms	F
19124	Red Maple	2F-P	38	F
19124	Red Maple	1S-P	43	Elevate 8' over proposed s/w, F
19200	Red Oak	3S	21	F, Air Excavation Required
19200	Red Oak	2S	15	F, Air Excavation Required
19200	Cedar	1S-P	29	F
19200	Linden	1F-P	29	F
19200 Fox Chapel Dr	White Pine	1F-P	40	F
19200 Fox Chapel Dr	Pin Oak	2F-P	37	F
19212	Red Maple	2F-P	30	F, Elevate 8' over proposed s/w



**Main, Lori J.**

---

**From:** Montgomery County, MD <montgomerycountymd@public.govdelivery.com>  
**Sent:** Monday, January 10, 2022 1:55 PM  
**To:** Main, Lori J.  
**Subject:** Virtual Public Hearing on Proposed Fox Chapel Community Sidewalk Proposal in Germantown to be held on Wednesday, Jan. 12

**Follow Up Flag:** Follow up  
**Flag Status:** Flagged

[EXTERNAL EMAIL]

---

# **MCDOT NEWS RELEASE**

Montgomery County Department of Transportation

---

For Immediate Release: Monday, January 10, 2022



# Virtual Public Hearing on Proposed Fox Chapel Community Sidewalk Proposal in Germantown to be held on Wednesday, Jan. 12

On Wednesday, Jan. 12 starting at 7 p.m., the Montgomery County Department of Transportation (MCDOT) will hold a virtual public hearing to discuss the proposed construction of sidewalk on the following roadways:

- Both sides of Plummer Drive from MD 355 / Frederick Road to end;
- Both sides of Plummer Court from Plummer Drive to end;
- Both sides of Staten Court from Plummer Drive to end;
- Both sides of Fox Chapel Drive from existing sidewalk to Plummer Drive.

At the virtual meeting, MCDOT will present the project scope, the conceptual design, project costs, schedules, and obtain public feedback. The completed project will enhance safety for pedestrians, bicyclists and people with disabilities as they travel to schools and nearby facilities. Public input is encouraged and will influence whether MCDOT constructs all or a portion of the sidewalk.

[Online registration](#) is required to attend. On the morning of the hearing, an electronic invitation will be sent to those who registered. Testimony and information provided will become a matter of public record.

Prior to the virtual hearing, the public is encouraged to review the project files below:

- [Annual Sidewalk Program Process and FAQ](#)
- [Project Map](#)
- [Tree Report](#)
- [Right of Way Construction Impacts](#)
- [Feedback Survey Form](#)

Written testimony or questions may be submitted to MCDOT's Sidewalk Program via email to [dte.sidewalk@montgomerycountymd.gov](mailto:dte.sidewalk@montgomerycountymd.gov) or [lori.main@montgomerycountymd.gov](mailto:lori.main@montgomerycountymd.gov). Written testimony carries the same weight as oral testimony. Testimony and information provided will become a matter of public record.

Learn more about MCDOT's engineering and construction projects by visiting [montgomerycountymd.gov/dot-dte](http://montgomerycountymd.gov/dot-dte). For more information on MCDOT programs, services and for updates, visit [montgomerycountymd.gov/mcdot](http://montgomerycountymd.gov/mcdot), follow @MCDOTNow on Twitter, subscribe to MCDOT news releases and subscribe to MCDOT's 'Go Montgomery!' newsletter.

###

Release ID: 22-006

Media Contact: Emily DeTitta, 240-372-2282 or [emily.detitta@montgomerycountymd.gov](mailto:emily.detitta@montgomerycountymd.gov)  
You are subscribed to MCDOT News Releases for Montgomery County Maryland.



This email was sent to you using GovDelivery, on behalf of [Montgomery County, Maryland Government](#).

As a subscriber, you agree that we may contact you by email and use the information you submit as described in the [Montgomery County Privacy Policy](#).

Please do not reply to this email. Replies to this email will not be responded to or read. If you have any questions or comments, please visit the MC311 Portal at [www.mc311.com](http://www.mc311.com) or call 3-1-1 (240-777-0311 if outside the County) to speak with a Customer Service Representative.

If you would like to unsubscribe from some email newsletters from Montgomery County, click [Manage Preference](#) and make updates. If you would like to unsubscribe from all email newsletters and remove your account information, click [Unsubscribe](#). Click [Help](#) for any further information.

---

This email was sent to Lori.Main@montgomerycountymd.gov using GovDelivery Communications Cloud on behalf of: Montgomery County Maryland · Monroe Street · 13th Floor Rockville · Rockville, MD 20850



**PUBLIC HEARING FOR  
PROPOSED SIDEWALK CONSTRUCTION**

**FOX CHAPEL COMMUNITY / Germantown,  
Maryland**

- Both sides of **Plummer Drive** from **MD 355 / Frederick Road** to **end**;
- Both sides of **Plummer Court** from **Plummer Drive** to **end**;
- Both sides of **Staten Court** from **Plummer Drive** to **end**;
- Both sides of **Fox Chapel Drive** from **existing sidewalk** to **Plummer Drive**.

Pursuant to Section 49-53 of the Montgomery County Code (2004) as amended, a **virtual** public hearing shall be held on **WEDNESDAY, JANUARY 12, 2022, at 7:00 p.m.** The hearing will be broadcast over the internet via Zoom.

**Please register to attend the hearing:  
<https://www.montgomerycountymd.gov/dot-dte/sidewalk/FoxChapel.html>**

To register, paste the above link into your browser and click on the "Schedule" tab of the website, where you will find a link to register to attend the hearing. Please note, registration closes on January 12, 2022, at 3:00pm. On the morning of the hearing on January 12, 2022, MCDOT will email the Zoom link and passcode to all registrants.

If you would like a copy of the Public Hearing Record Binder and displays, please contact the Sidewalk Program's Planning Specialist, **Lori Jean Main**, via email at **[Lori.Main@montgomerycountymd.gov](mailto:Lori.Main@montgomerycountymd.gov)**.

Audio and video of the hearing will be recorded, a link to which will be posted on the SIDEWALK PROGRAM's webpage on the MCDOT website: **<http://www.montgomerycountymd.gov/dotdte/sidewalk>**.

The sole purpose of a public hearing is to allow citizens an opportunity to present oral and/or written comments concerning construction of a sidewalk that provides disabled citizens, pedestrians and bicyclists safer travel to schools and nearby public attractions or facilities. The information presented helps determine whether or not to recommend constructing a portion of, or the entire proposed project. The following hearing will begin at **7:00 p.m.** and run continuously until all information is presented and the hearing has concluded.

**WRITTEN TESTIMONY CARRIES THE SAME WEIGHT AS ORAL TESTIMONY.** Written testimony for consideration may be submitted to: **[lori.main@montgomerycountymd.gov](mailto:lori.main@montgomerycountymd.gov)**. Please visit the Sidewalk Program website, link above, to obtain digital copies of the sidewalk proposal files.

Interpreter services will be provided upon request. Please allow (5) business days advance notice when requesting interpreter services.

December 29, 2021

January 5, 2022

Ad#56707

**From:** [Molly van Akkeren](#)  
**To:** [Main, Lori J.](#)  
**Subject:** Fox Chapel Community sidewalk proposal  
**Date:** Sunday, November 7, 2021 8:35:40 AM

---

**[EXTERNAL EMAIL]**

Dear Ms. Main,

I support adding sidewalks to Plummer Drive, Plummer Court, and Staten Court in Germantown. This proposal is important for the safety of the community. Both walkers and drivers are negatively impacted by the lack of sidewalks in this neighborhood. Children and families that must walk to Fox Chapel ES need a safe path to school.

Thank you for your help in making our community safe for all,

Molly van Akkeren  
11126 Flanagan Lane  
Germantown 20876

**From:** [Stella Yau](#)  
**To:** [Main, Lori J.](#)  
**Subject:** Re: Fox Chapel Community Sidewalk Proposal  
**Date:** Friday, November 12, 2021 6:36:02 PM  
**Attachments:** [image001.png](#)  
[image002.png](#)  
[Letter - Proposal to Impacted Residents.pdf](#)  
[Project Vicinity Map - Fox Chapel Sidewalk Proposal.pdf](#)  
[Right of Way Construction Impacts - Fox Chapel Sidewalk Proposal.pdf](#)  
[Tree Report - Fox Chapel Sidewalk Proposal.pdf](#)  
[Comment & Survey Form \(Nov 12\) 2021-10-13.pdf](#)  
[Sidewalk Program Process & FAQ.pdf](#)

---

**[EXTERNAL EMAIL]**

Hello Lori,

My children go to Fox Chapel ES and I fully support the installation of sidewalk to the proposed roads.

These roads are within the Fox Chapel Elementary School boundary. Further, the students who live along these three roads are designated walkers. The lack of sidewalks makes it unsafe for these students to walk to school. Most, if not all, are therefore driven to school.

This sidewalk addition aligns with MCPS Safe Routes to Schools program goals:

- 1) To enable and encourage children, including those with disabilities, to walk and bike to school.
- 2) To make biking and walking to school a safer and more appealing transportation choice, thereby encouraging a healthy and active lifestyle from an early age.
- 3) To plan and build projects and activities that will improve safety and reduce traffic, fuel consumption, and air pollution.

Address - 11202 Cool Breeze Place, Germantown, MD 20876

Property Owner - Fat Shing Lo

My Name - Ying Yau (Stella)

Tel - 301-873-6319

Thank you,  
Ying Yau (Stella)

On Nov 2, 2021, at 4:43 PM, Main, Lori J. <[Lori.Main@montgomerycountymd.gov](mailto:Lori.Main@montgomerycountymd.gov)> wrote:

Hello Sidewalk Installation Requestors,

I am contacting you today regarding the Fox Chapel Sidewalk Proposal, which was proposed in response to your requests for sidewalk installation on Plummer Drive, Plummer Court and Staten Court. I have attached a copy of the proposal documents for your easy reference.

As you may be aware from your receipt of the sidewalk proposal, we are currently in the initial comment period of our process. The comments we receive from the Fox Chapel community regarding the proposal will determine whether or not the proposal goes forward to public hearing. If the proposal does not receive sufficient supporting comments during this period, the proposal may be suspended, or cancelled. If suspended, there will be no public hearing and no installation. For this reason, I wanted to make sure you understand that the sidewalk request you submitted



does not count as a supporting comment. The issuance of the proposal starts our process anew, and as such, if you wish to support the installation, you will need to submit a supporting comment. Comments may be submitted using the attached form or you may simply send your comments in an email to me at this address.

Currently, we have received 2 opposing and 0 supporting comments. Luckily, there are still 10 days left in the comment period; if we were making the decision whether to proceed or not at this time, the proposal would surely be suspended.

The sidewalk proposal is not carved in stone. If you feel that you would prefer sidewalk on only one side of the street, please let us know in your comments. Likewise, if you support sidewalk installation on one street but not the other roadways, please let us know that too. This is not an all or nothing proposal.

Thank you for allowing me the opportunity to clarify our process and comment period. Have a wonderful evening and please let me know if you have any questions.

Best,

*Lori*

**Lori Jean Main**

**Planning Specialist**

**Annual Sidewalk Program**

**Montgomery County Department of Transportation**

Division of Transportation Engineering

100 Edison Park Drive

4th Floor

Gaithersburg, Maryland 20878

lori.main@montgomerycountymd.gov

240-777-7271



Take 10 minutes to be counted now – visit: <https://2020census.gov/>



For COVID-19 Information and resources, visit: [www.montgomerycountymd.gov/COVID19](http://www.montgomerycountymd.gov/COVID19)

**From:** [manoj sharma](#)  
**To:** [Main, Lori J.](#)  
**Subject:** Re: Fox Chapel Community Sidewalk Proposal  
**Date:** Wednesday, November 3, 2021 6:48:50 PM  
**Attachments:** [Letter - Proposal to Impacted Residents.pdf](#)  
[Project Vicinity Map - Fox Chapel Sidewalk Proposal.pdf](#)  
[Right of Way Construction Impacts - Fox Chapel Sidewalk Proposal.pdf](#)  
[Tree Report - Fox Chapel Sidewalk Proposal.pdf](#)  
[Comment & Survey Form \(Nov 12\) 2021-10-13.pdf](#)  
[Sidewalk Program Process & FAQ.pdf](#)  
[image001.png](#)  
[image002.png](#)

---

**[EXTERNAL EMAIL]**

Dear Lori,

Thank you for the mail. I fully support the Fox Chapel Community Sidewalk Proposal. We live closeby to Plummer Dr and use this road regularly for my commute and walk. It is a big safety issue, especially when you are walking with kids. Also, it is very dangerous to walk on this road at night. People living next to the door have put the stones to discourage walking on their grass, which forces people to use this unsafe busy road. Please let me know if you need any more information from my side.

Thanks,  
Manoj Sharma



**From:** [Max Villalta](#)  
**To:** [David Gonzalez](#)  
**Cc:** [Main, Lori J.](#); [syau6579@yahoo.com](#); [kimags1@yahoo.com](#); [abuonantuono@yahoo.com](#); [threlkeld@gmail.com](#); [incautosupply@yahoo.com](#); [ntnbud@aol.com](#); [yooniehoehn@gmail.com](#); [ftpadonou@gmail.com](#); [mnarayan@hns.com](#); [pop\\_eye\\_81@hotmail.com](#); [vishnusharmal454@gmail.com](#); [kristibelcher@gmail.com](#); [stevenhancock@gmail.com](#); [billiams@aol.com](#); [Thoanluutran@hotmail.com](#); [cdd245@gmail.com](#); [Gonzales, Robert](#); [Holley, Geary](#); [Berrios, Juan A.](#); [Sonia E Munoz](#)  
**Subject:** Re: Fox Chapel Community Sidewalk Proposal  
**Date:** Tuesday, November 2, 2021 11:25:55 PM

---

**[EXTERNAL EMAIL]**

Good evening,

Yes, my kids and I go for a walk many times and sidewalk, lights and speed bumps are necessary once a car was going faster than the speed limit that had to push my kids into the grass since that incident I prefer to choose different roads. Also a lot of cars with people doing marijuana I have myself approach them and ask to look for other places to do that not our neighborhood so more light and the presence of the police since the school is very close by.

Let us know how we can help

Best,

The Villalta family

Sent from my iPhone

**From:** [David Gonzalez](#)  
**To:** [Main, Lori J.](#)  
**Cc:** [syau6579@yahoo.com](#); [kimag1@yahoo.com](#); [abuanantuono@yahoo.com](#); [threlkeld@gmail.com](#); [lncautosupply@yahoo.com](#); [ntnbud@aol.com](#); [maxvillalta7522@yahoo.com](#); [yooniehoehn@gmail.com](#); [ftpardonou@gmail.com](#); [mnarayan@hns.com](#); [pop\\_eye\\_81@hotmail.com](#); [vishnusharmal454@gmail.com](#); [kristibelcher@gmail.com](#); [stevenhancock@gmail.com](#); [billiams@aol.com](#); [Thoanluutran@hotmail.com](#); [cdd245@gmail.com](#); [Gonzales, Robert](#); [Holley, Geary](#); [Berrios, Juan A.](#); [Sonia E Munoz](#)  
**Subject:** Re: Fox Chapel Community Sidewalk Proposal  
**Date:** Tuesday, November 2, 2021 5:30:15 PM  
**Attachments:** [image001.png](#)  
[image002.png](#)

---

**[EXTERNAL EMAIL]**

Hi Ms. Main,

I fully agree with Ms. Munoz. I use the three streets in the project -- Plummer Dr., Staten Ct., and Plummer Ct.-- for daily walks with my wife, many times in the evening, and it has become increasingly dangerous. We have to use flashlights to ensure the drivers see us. Specifically, the curve at Plummer Dr. is a big threat. We have had close calls in that curve with drivers that simply do not obey the posted 25 MPH speed limit. The installation of sidewalks, in addition to traffic calming devices, is a long overdue construction effort that must be executed sooner than later.

Please let me know if you need further information.

Regards,

- David Gonzalez

On Tue, Nov 2, 2021 at 5:08 PM Sonia E Munoz <[soniamunozhomes@gmail.com](mailto:soniamunozhomes@gmail.com)> wrote:

Ms. Main,

Plummer is a very dangerous road especially at night, it is so dark that you can not see the people that are walking until you are very close to them. I think that is an accident waiting to happen. I feel that this neighborhood has been ignored for a long time. I will be happy to see sidewalks even if it was on one side of the road. Speed limit signs will help also. Thank you for what you are trying to do.

Best Regards

Sonia

Sonia E. Munoz  
Hablo Español  
WEICHERT REALTORS  
Cell: 301-758-9841  
Office: 301-610-6444  
14955 Shady Grove Rd. Suite 300  
Rockville, MD 20850

The finest compliment that I can ever receive is a referral from family, friends and past clients. Working exclusively by "referral" means that I focus on all your real estate needs, before, during & after your transaction. Thank you for your referrals!

**From:** [Sonia E Munoz](#)  
**To:** [Main, Lori J.](#)  
**Cc:** [davgonzalez@gmail.com](#); [syau6579@yahoo.com](#); [kjmags1@yahoo.com](#); [abunantuono@yahoo.com](#); [threlkeld@gmail.com](#); [lncautosupply@yahoo.com](#); [ntnbud@aol.com](#); [maxvillalta7522@yahoo.com](#); [yooniehoehn@gmail.com](#); [ftpadonou@gmail.com](#); [mnarayan@hns.com](#); [pop\\_eye\\_81@hotmail.com](#); [vishnusharmal454@gmail.com](#); [kristibelcher@gmail.com](#); [stevenhancock@gmail.com](#); [billiams@aol.com](#); [Thoanluutran@hotmail.com](#); [cdd245@gmail.com](#); [Gonzales, Robert](#); [Holley, Geary](#); [Berrios, Juan A.](#)  
**Subject:** Re: Fox Chapel Community Sidewalk Proposal  
**Date:** Tuesday, November 2, 2021 5:08:36 PM  
**Attachments:** [image001.png](#)  
[image002.png](#)

---

**[EXTERNAL EMAIL]**

Ms. Main,

Plummer is a very dangerous road especially at night, it is so dark that you can not see the people that are walking until you are very close to them. I think that is an accident waiting to happen. I feel that this neighborhood has been ignored for a long time. I will be happy to see sidewalks even if it was on one side of the road. Speed limit signs will help also. Thank you for what you are trying to do.

Best Regards

Sonia

Sonia E. Munoz  
Hablo Español  
WEICHERT REALTORS  
Cell: 301-758-9841  
Office: 301-610-6444  
14955 Shady Grove Rd. Suite 300  
Rockville, MD 20850

The finest compliment that I can ever receive is a referral from family, friends and past clients. Working exclusively by "referral" means that I focus on all your real estate needs, before, during & after your transaction. Thank you for your referrals!

On Tue, Nov 2, 2021 at 4:43 PM Main, Lori J. <[Lori.Main@montgomerycountymd.gov](mailto:Lori.Main@montgomerycountymd.gov)> wrote:

Hello Sidewalk Installation Requestors,

I am contacting you today regarding the Fox Chapel Sidewalk Proposal, which was proposed in response to your requests for sidewalk installation on Plummer Drive, Plummer Court and Staten Court. I have attached a copy of the proposal documents for your easy reference.

As you may be aware from your receipt of the sidewalk proposal, we are currently in the initial comment period of our process. The comments we receive from the Fox Chapel community regarding the proposal will determine whether or not the proposal goes forward to public hearing.

**From:** [Gabriella Wood](#)  
**To:** [Main, Lori J.](#)  
**Subject:** Fox Chapel Community sidewalk proposal  
**Date:** Sunday, November 7, 2021 9:52:21 AM

---

**[EXTERNAL EMAIL]**

I am writing to say that I am an advocate and implore adding sidewalks to Plummer Drive, Plummer Court, and Staten Court. I live off of Queens Cross and I know that it can be easy to drive fast on these roads. More so as a runner (sometimes walker) there is no sidewalk so I always run with cars facing me. I do go to the grass when there are two cars because I know there is not enough room for me. IF there were a sidewalk I can tell you it would be used. I see MANY pedestrians walking and have to slow down if there is another car coming as there is not enough room for me to walk over. I also see many people walking their dogs too, what about their safety?

I am surprised no one has been hurt yet on this road, but it needs a sidewalk NOW. It does not make sense the other neighborhood streets have them except for the main road leading out of the Fox Chapel development to the major road 355/Frederick. If there. Thanks so much for reading.

Gabriella Wood  
19012 Queens Cross Ln, Germantown, MD 20876



**From:** [Vishnu Sharma](#)  
**To:** [Main, Lori J.](#); [DTE SIDEWALK](#)  
**Subject:** Re: Strong support for the Fox Chapel Community Sidewalk Proposal  
**Date:** Tuesday, November 2, 2021 6:32:50 PM  
**Attachments:** [image001.png](#)  
[image002.png](#)

---

**[EXTERNAL EMAIL]**

Dear Lori,

We are residents of 19104 Plummer Dr, Germantown, MD 20876, and would like to thank you for sharing the Fox Chapel Community Sidewalk Proposal with us. I **STRONGLY SUPPORT** this sidewalk proposal because of the following reasons:

1. We have two small daughters and old parents. It is very unsafe and scary for all of us to walk on the road whenever we step outside our home.
2. The 'Plummer Dr' road connects 'Frederick road' to other 4 roads. It is a very busy and narrow road that always has vehicles running at a faster speed all the time.
3. It is not only about safety of the people who lives next to this road, but also about the safety of a lot of people who use this road all the time as they live next to the roads that are connected to Frederick road via Plummer Dr Rd including Abbotsford Cir, Staleybridge Rd, Queen Cross Ln, St Johnsbury Ln, Kings Arrow Ct, among others.
4. Even from the perspective of a car or any vehicle driver, it is very unsafe to drive a vehicle when you have to share a road with a lot of kids, elderly or even young people walking along with the opposing traffic.
5. I have shared these issues with the other residents multiple times. But people are reluctant as the potential sidewalk will encourage people living closeby to use that road or sidewalk. Also, there are only 1-2 families (as per my knowledge) who have smaller kids like mine and thus sidewalk is not their priority. The comfort of a few people should not compromise the safety or need of the larger public. If you really want to get the majority, all the people nearby should vote as we are not the only ones who use this road.
6. Last but not least, you will surely build the sidewalk one day, but it's just a matter of time. It is better to construct it sooner for everyone's safety rather than later when someone gets seriously injured due to negligence.

Thanks and regards,  
Vishnu and Chetna Sharma

**From:** [Tom Tran](#)  
**To:** [Main, Lori J.](#); [davgonzalez@gmail.com](#); [syau6579@yahoo.com](#); [kjmags1@yahoo.com](#); [abuanantuono@yahoo.com](#); [threlkeld@gmail.com](#); [Incautosupply@yahoo.com](#); [ntnbud@aol.com](#); [soniamunozhomes@gmail.com](#); [maxvillalta7522@yahoo.com](#); [yooniehoehn@gmail.com](#); [ftpadonou@gmail.com](#); [mnarayan@hns.com](#); [pop\\_eye\\_81@hotmail.com](#); [vishnusharmal454@gmail.com](#); [kristibelcher@gmail.com](#); [stevenhancock@gmail.com](#); [billiams@aol.com](#); [cdd245@gmail.com](#)  
**Cc:** [Gonzales, Robert](#); [Holley, Geary](#); [Berrios, Juan A.](#)  
**Subject:** Re: Fox Chapel Community Sidewalk Proposal  
**Date:** Thursday, November 11, 2021 12:52:04 PM  
**Attachments:** [image001.png](#)  
[image002.png](#)

---

**[EXTERNAL EMAIL]**

Hello Ms. Lori Main,

My name is Tom Tran. I live at 19108 Plummer Drive. I fully support this project because:

1. Two years ago, I was parking my car in my long driveway. Around 4pm, two young teenagers drove so fast on Plummer drive, their car flip over, spun and hit my car. Both cars were totally lost. Image if there was a pedestrian walking around there, I don't think he/she can survive. (About 6 years ago, I experienced the same incident but the damage to my car was not that bad). I think we need a little speed bump at the curve on Plummer Dr. My neighbor lost her mailbox several times.
2. There are several kids on the block going to Fox Chapel elementary school. Since it is not more than a mile from school, they are not qualified for the school bus, I feel very bad when I see them walking on the street when a car passes by. As you may already know, the number of accidents caused by texting/talking while driving are increasing... We don't want to see kids or pedestrians got hit by an ignorant driver.
3. Our neighborhood is probably not the richest one in Germantown. I see a lot of people in my neighborhood walking on Plummer Dr to take the Bus at the corner of Plummer Dr and 355 every day. I think they should deserve a little sidewalk to safely walk on every day.

Please re-consider this project.

Best regards,  
Tom Tran.

---

**From:** Main, Lori J. <[Lori.Main@montgomerycountymd.gov](mailto:Lori.Main@montgomerycountymd.gov)>  
**Sent:** Tuesday, November 2, 2021 4:43 PM  
**To:** [davgonzalez@gmail.com](#) <[davgonzalez@gmail.com](mailto:davgonzalez@gmail.com)>; [syau6579@yahoo.com](#) <[syau6579@yahoo.com](mailto:syau6579@yahoo.com)>; [kjmags1@yahoo.com](#) <[kjmags1@yahoo.com](mailto:kjmags1@yahoo.com)>; [abuanantuono@yahoo.com](#) <[abuanantuono@yahoo.com](mailto:abuanantuono@yahoo.com)>; [threlkeld@gmail.com](#) <[threlkeld@gmail.com](mailto:threlkeld@gmail.com)>; [Incautosupply@yahoo.com](#) <[Incautosupply@yahoo.com](mailto:Incautosupply@yahoo.com)>; [ntnbud@aol.com](#) <[ntnbud@aol.com](mailto:ntnbud@aol.com)>; [soniamunozhomes@gmail.com](#) <[soniamunozhomes@gmail.com](mailto:soniamunozhomes@gmail.com)>; [maxvillalta7522@yahoo.com](#) <[maxvillalta7522@yahoo.com](mailto:maxvillalta7522@yahoo.com)>; [yooniehoehn@gmail.com](#) <[yooniehoehn@gmail.com](mailto:yooniehoehn@gmail.com)>; [ftpadonou@gmail.com](#) <[ftpadonou@gmail.com](mailto:ftpadonou@gmail.com)>; [mnarayan@hns.com](#) <[mnarayan@hns.com](mailto:mnarayan@hns.com)>; [pop\\_eye\\_81@hotmail.com](#) <[pop\\_eye\\_81@hotmail.com](mailto:pop_eye_81@hotmail.com)>;

vishnusharmal454@gmail.com <vishnusharmal454@gmail.com>; kristibelcher@gmail.com <kristibelcher@gmail.com>; stevenhancock@gmail.com <stevenhancock@gmail.com>; billiams@aol.com <billiams@aol.com>; Thoanluutran@hotmail.com <Thoanluutran@hotmail.com>; cdd245@gmail.com <cdd245@gmail.com>

**Cc:** Gonzales, Robert <Robert.Gonzales@montgomerycountymd.gov>; Holley, Geary <Geary.Holley@montgomerycountymd.gov>; Berrios, Juan A. <Juan.Berrios@montgomerycountymd.gov>

**Subject:** Fox Chapel Community Sidewalk Proposal

Hello Sidewalk Installation Requestors,

I am contacting you today regarding the Fox Chapel Sidewalk Proposal, which was proposed in response to your requests for sidewalk installation on Plummer Drive, Plummer Court and Staten Court. I have attached a copy of the proposal documents for your easy reference.

As you may be aware from your receipt of the sidewalk proposal, we are currently in the initial comment period of our process. The comments we receive from the Fox Chapel community regarding the proposal will determine whether or not the proposal goes forward to public hearing. If the proposal does not receive sufficient supporting comments during this period, the proposal may be suspended, or cancelled. If suspended, there will be no public hearing and no installation. For this reason, I wanted to make sure you understand that the sidewalk request you submitted does not count as a supporting comment. The issuance of the proposal starts our process anew, and as such, if you wish to support the installation, you will need to submit a supporting comment. Comments may be submitted using the attached form or you may simply send your comments in an email to me at this address.

Currently, we have received 2 opposing and 0 supporting comments. Luckily, there are still 10 days left in the comment period; if we were making the decision whether to proceed or not at this time, the proposal would surely be suspended.

The sidewalk proposal is not carved in stone. If you feel that you would prefer sidewalk on only one side of the street, please let us know in your comments. Likewise, if you support sidewalk installation on one street but not the other roadways, please let us know that too. This is not an all or nothing proposal.

Thank you for allowing me the opportunity to clarify our process and comment period. Have a wonderful evening and please let me know if you have any questions.

Best,

*Lori*

**Lori Jean Main**

**Planning Specialist**

**Annual Sidewalk Program**

**Montgomery County Department of Transportation**

Division of Transportation Engineering

100 Edison Park Drive

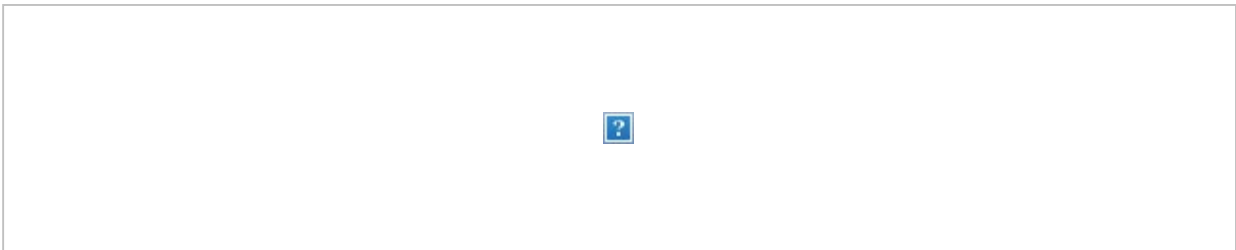
4th Floor

Gaithersburg, Maryland 20878

lori.main@montgomerycountymd.gov  
240-777-7271



Take 10 minutes to be counted now – visit: <https://2020census.gov/>



For COVID-19 Information and resources, visit: [www.montgomerycountymd.gov/COVID19](http://www.montgomerycountymd.gov/COVID19)

**From:** [Adriana Threlkeld](#)  
**To:** [Main, Lori J.](#)  
**Subject:** Re: Fox Chapel Community Sidewalk Proposal  
**Date:** Wednesday, November 3, 2021 10:38:50 AM  
**Attachments:** [image001.png](#)  
[image002.png](#)

---

**[EXTERNAL EMAIL]**

Hello Ms. Main,

Thank you for the opportunity to speak in support of the sidewalk project in our area (Plummer Drive and the surrounding neighborhood)

My family is located at 19209 Plummer Drive, a prime example of where sidewalks need to be.

We have two dogs that we walk every day. We fear for their safety and ours on our daily walk without sidewalks.

We have a 6 year old son who is designated a walker for Fox Chapel Elementary School as we do not qualify for the bus as we live too close to the school. This presents a very dangerous situation for our little one as well as older children who are dropped off and picked up at various locations by school bus for middle and high school. We have a 'school children walking/crossing' sign on Plummer Drive but how is this helpful at all without sidewalks for the kids?

This is a very walking friendly community as there is a Montgomery County Ride On Bus that stops at the corner of Plummer and 355 (Frederick Rd) and many people walk from their home to catch this bus. It is treacherous, especially at night, when vehicles make a right hand turn onto Plummer from 355 and people are walking home after getting off the bus. Someone could easily get hit by a vehicle that is not cautious about speed as they enter our development. Speed bumps are also desperately needed but I understand that is a separate topic.

Trick or Treating on Halloween is also very very dangerous. Without sidewalks, children are forced to walk on the street in the dark in dark costumes and masks and vehicles may not see them. It makes for a very stressful experience where childhood fun should be had.

I can relay a story that can be used in support of sidewalks in our neighborhood:

A few short weeks ago my son, husband and I were walking home from school, walking down Fox Chapel Drive towards Plummer Drive. There is no sidewalk midway down Fox Chapel Drive and you must walk on neighbors' lawns to stay out of the road. We had passed an Amazon Prime delivery van that was parked on Fox Chapel Dr. facing down hill towards Plummer Drive. We had just crossed Plummer Drive onto the grass of our front lawn when I heard shouting and turned around. The van was barreling down Fox Chapel Drive without a driver! The driver was at the top of the hill, looking down at the runaway van. The van sped down the hill, crashed through the stop sign and road sign at the corner and landed on the front lawn of our next door neighbor, crashing through their mailbox. I cannot fully express to you how horrifying this sight was, knowing we were seconds from being hit as pedestrians. Luckily, no one was hurt but a sidewalk certainly would have provided extra protection here.

Thank you again for your time and feel free to contact me if any further information is needed. We appreciate you being an advocate for our neighborhood!

Sincerely,

Adriana Threlkeld

**From:** [thomas threlkeld](#)  
**To:** [Main, Lori J.](#)  
**Subject:** Re: Fox Chapel Community Sidewalk Proposal  
**Date:** Tuesday, November 2, 2021 5:42:52 PM  
**Attachments:** [image001.png](#)  
[image002.png](#)

---

**[EXTERNAL EMAIL]**

Ms. Main,

I fully support the installation of sidewalks on Plummer Drive. I walk my son home from Fox Chapel Elementary five days a week and also walk my dogs on Plummer Drive several days a week and cars traveling well in excess of the speed limit are a constant concern. When walking my dogs, I know I don't feel safe until we turn right at the end of Plummer Drive, on to a street with sidewalks. I strongly support the installation of sidewalks on Plummer Drive.

All the best,  
Thomas Threlkeld  
19209 Plummer Drive

|

**From:** [Wanda Diggs](#)  
**To:** [DTE SIDEWALK](#); [Main, Lori J.](#)  
**Subject:** Sidewalk Program Comments & Feedback Survey Form Response  
**Date:** Wednesday, November 10, 2021 4:36:34 PM

---

**[EXTERNAL EMAIL]**

Greetings,

My name is Wanda Diggs-Williams. I'm the property owner at 11404 Staten Court, Germantown, Md. 20876. I'm responding to the Sidewalk Program Comments & Feedback survey form. I feel Staten Court does NOT need a sidewalk. Its low traffic, just residents and service vehicles. Few of my immediate neighbors walk the streets. And when they do they are comfortable walking the street, stopping to visit with neighbors along the way. I'm personally uncomfortable with having and encouraging outsiders to walk our street. Due to the spread of covid, and tracking strangers in our neighborhood. I purchased my property because of its location off of the main artery, and privacy. I'm now elderly, and retired. And don't want the expense or responsibility of sidewalk UPKEEP. It will cause a great inconvenience and challenge for me to have snow and/or ice cleared from a sidewalk in front of my home. The only street I could see a consideration for a sidewalk would be one side of Plummer drive to allow access to public and school transportation, to safely avoid the traffic of the surrounding neighborhood of Fox Chapel North Residents. Please feel free to contact me directly, 240-474-8257, [princesswandaful@hotmail.com](mailto:princesswandaful@hotmail.com)

Thank You,  
Wanda Diggs

Sent from [Mail](#) for Windows

# SIDEWALK PROGRAM

## Division of Transportation Engineering

100 Edison Park Drive, 4<sup>th</sup> Floor · Gaithersburg, MD 20878 · 240-777-7270

[MCDOT.DTE.Sidewalk@montgomerycountymd.gov](mailto:MCDOT.DTE.Sidewalk@montgomerycountymd.gov)

[Lori.Main@montgomerycountymd.gov](mailto:Lori.Main@montgomerycountymd.gov)

## COMMENTS & FEEDBACK SURVEY FORM\* SIDEWALK RECONSTRUCTION

### Location:

- Both sides of **Plummer Drive** from **MD 355 / Frederick Road** to end;
- Both sides of **Plummer Court** from **Plummer Drive** to end;
- Both sides of **Staten Court** from **Plummer Drive** to end.

### COMMENTS or CONCERNS:

We feel a sidewalk would suit our community best from Plummer Dr, both sides from 355 to the beginning to Staten Ct on the N. and the beginning of Staleybridge Rd on the South.

This is the primary road (Plummer Dr) that school children walk to their bus pickup for school, where we ~~take~~ take walks with our children & pets.

### Property Owner(s) Name and Address:

Steven & Dawn Hancock  
11409 Staten Ct  
German town, MD 20876

### If questions, please provide email address or telephone number:

301.728.1325

NOTE: The Sidewalk Program welcomes all comments and input, and every attempt will be made to address your concerns. Unfortunately, due to the large volume of correspondence received daily, we reply to questions only. Please note, if you are unable to respond prior to the deadline, your comments will be accepted thereafter.

\*This form is for your convenience; you are not required to use this form when submitting your comments.

*Please mail or e-mail our office by:*

**Friday, November 12, 2021**

*Thank you!*



**From:** [Volley, Bob](#)  
**To:** [DTE SIDEWALK](#)  
**Subject:** Fox Chapel Community Sidewalk Proposal  
**Date:** Friday, November 12, 2021 1:53:41 PM

---

**[EXTERNAL EMAIL]**

I do not see a need for sidewalks on Plummer Court or Staten Court. There may be enough traffic on Plummer Drive to justify a sidewalk there.

Bob Volley

11416 Staten Ct.

Germantown, MD 20876

Thank you,

Bob

**From:** [rush77777@aol.com](mailto:rush77777@aol.com)  
**To:** [DTE SIDEWALK](#)  
**Subject:** Plummer Dr sidewalk program  
**Date:** Friday, November 12, 2021 12:39:29 PM

---

**[EXTERNAL EMAIL]**

To the Division of Transportation Engineering, Sidewalk Program:

We do Not see the need for sidewalks on Staten Ct, Plummer Ct or the circle at the end of Plummer Dr. These 3 areas do not see much traffic, they are dead ends and there is no through traffic. We have no problem at all walking our dogs and kids playing on the streets as they are. After talking with our neighbors, 95% of homeowners in those 3 areas do not see the need for sidewalks on these slow streets. That's 21 houses against sidewalks, 1 unknown.

Staten Ct and Plummer Ct and the Plummer Dr circle are only 20 feet wide and if sidewalks were installed cars would be forced to park off the grass/sidewalks and into the street. When cars are parked in the street on both sides there would no room for Emergency vehicles, Recycling trucks, Garbage trucks or any other large vehicles to pass through. As it is now cars on Staten Ct and Plummer Ct and the Plummer Dr circle pull off into the grass to park right where sidewalks would be installed. There is no need for sidewalks.

There are a some pedestrians that do walk from the Staleybridge Rd at Queenscross Rd area out to 355. They have the option of using the sidewalks already present along Queenscross Rd and St Johnsbury Ln and Fox Chapel Dr get out to 355. The completion of the sidewalks on Fox Chapel Dr to Plummer Dr then left out to 355 is needed and we do support that.

Then there is the part of Plummer Dr between Staleybridge Rd and 355. That area has a wider street and does have more traffic but it is not that bad. We have lived here 11 years and have had no trouble walking there. Talking with neighbors in this area it seems there are 4 homeowners in favor of a sidewalk and about 13 against sidewalks with a few unknown. If there are enough comments for sidewalks here then 1 side of Plummer Dr, the west side, could be the best option, if needed.

Andy Stief & Michelle Taylor  
11424 Staten Ct.

**From:** [johnesill@verizon.net](mailto:johnesill@verizon.net)  
**To:** [DTE SIDEWALK](#)  
**Cc:** [Peggy Sill](#)  
**Subject:** Fox Chapel Sidewalks  
**Date:** Saturday, November 13, 2021 8:45:35 AM

---

**[EXTERNAL EMAIL]**

As Fox Chapel residents, we are opposed to having a sidewalk installed around our circle. There is no need and it will be disruptive and an eyesore.

One sidewalk along the open part of Plummer Drive is all that is needed.

Sincerely,  
John & Peggy Sill  
19001 Plummer Drive  
Germantown MD 20876

**From:** [Fox Chapel Civic Assoc. Germantown Maryland](#)  
**To:** [Main, Lori J.](#); [DTE SIDEWALK](#)  
**Subject:** Fox Chapel Germantown sidewalk program  
**Date:** Friday, November 12, 2021 4:42:43 PM

---

**[EXTERNAL EMAIL]**

The Fox Chapel Civic Association which encompasses the 45 houses whose properties border on Plummer Dr, Plummer Ct and Staten Ct wishes to go on the record as being very much against sidewalks on Plummer Ct and Staten Ct.

The majority of homeowners in our Fox Chapel Civic Association, by a wide margin, do not want sidewalks for a variety of reasons. The sidewalks are not necessary and walking is not a problem is the overall view of most homeowners.

Plummer Ct and Staten Ct are quiet country roads with little traffic. Plummer Dr has more traffic and there are a few residents on that street that do think 1 side of Plummer Dr could use a sidewalk. However, they are in the minority.

Speed bumps on Plummer Dr have been studied a few years ago by the Montgomery County Police. That study using a speed monitoring trailer determined there were not enough cars travelling over the speed limit vs those under the limit to go forward. Speed bumps were deemed not necessary as the road is not that busy.

Sidewalks are just not necessary is the overall position of the Fox Chapel Civic Association.



[FOXCHAPELCIVICASSOCIATION@GMAIL.COM](mailto:FOXCHAPELCIVICASSOCIATION@GMAIL.COM)

*Please let us know what F.C.C.A notifications you wish to Receive? (All - Social - Safety - None)*

**From:** [Perkins, Nikia L CIV USN COMNAVSEASYSCOM DC \(USA\)](#)  
**To:** [Main, Lori J.](#)  
**Cc:** [Gonzales, Robert](#); [Holley, Geary](#); [Berrios, Juan A.](#); [Perkins, Peri P CIV USN COMNAVSEASYSCOM DC \(USA\)](#)  
**Subject:** RE: [Non-DoD Source] RE: Sidewalk Comments & Feedback Survey Form (11400 Staten Ct)  
**Date:** Wednesday, November 17, 2021 6:49:57 AM  
**Attachments:** [image003.png](#)  
[image006.gif](#)  
[image001.png](#)  
[image002.jpg](#)

---

Good Morning Lori,

Thank you for your consideration, response, and information. My address is in the subject line.

Sorry if I mislead you into thinking people park on the sidewalk proper, I think you call it the driveway apron. Please allow my learning curve at trying to use the right lingo. There are enough cars in some driveways that park bumper to bumper and they extend to the street. This blocks the apron requiring people to walk into the street to get around. I acknowledge calling the non-emergency police department for situations such as these, but in my experience the response has not resolved the situation.

I noticed the project is called "Plummer Drive" Right-of-way construction project. Is it safe to assume that the concern was originally raised about Plummer Drive and the cul-de-sac's were an add in? We agree that Plummer Drive should get a sidewalk due to the constant pedestrian and vehicle traffic going to and from route 355. We do not see the need for any of the cul-de-sacs to be changed as they are not through streets and do not see anywhere near the amount of vehicle or pedestrian traffic. During the pandemic, the amount of people witnessed walking up and down Staten Ct. in a day is less than 20. Will there be a study done to determine pedestrian usage on all the streets you are proposing to add sidewalks to? If so, will we get to see the results of that study?

Addressing Director Conklin's bullets:

- Do the proposed sidewalks connect to preexisting sidewalks or networks of sidewalks?
  - No, the proposed sidewalk in our cul-de-sac (Staten Ct) does not connect to any preexisting sidewalk or network of sidewalks.
- Will the new sidewalk provide safer access to public transportation, schools, bus stops, parks, religious institutions, or other amenities?
  - No, the Staten Court sidewalk, does not provide access to public transportation, schools, bus stops, parks, or other county amenities.
- Will the new sidewalk(s) meet a purpose?
  - No, we do not believe there is any reason or purpose for the Staten Court sidewalk(s). It is not a through street and there is not a significant amount of pedestrian or vehicle traffic to warrant the addition of a sidewalk.

Also, is there some definition you can provide that describes the distance allotted in a right-of-way in Montgomery County? I would also like to ask if this email be included in the record as I was able to better address the Director's bullets in this email?

**Subject:** Sidewalk Comments & Feedback Survey Form (11400 Staten Ct)

Good Morning,

We are sorry we are a little late in getting back to this survey. We were out of the country for a couple of weeks around the deadline to submit. I am hoping if people snail mailed you their response by the 12<sup>th</sup> those forms might not get back to you till sometime today or tomorrow. I hope you won't mind adding our concerns about the proposed sidewalk in our area.

We agree there should be a sidewalk all along Plummer Drive as many people (including some school aged kids) traverse that road to get to/from 355.

We do not feel there is sufficient need to have a sidewalk in any of the cul-de-sac's in question. There isn't as much pedestrian traffic in those areas because they are not thru streets. We feel it is a waste of County funds to install or maintain these areas. Furthermore, we have never heard nor seen an issue with any pedestrian accidents (on Plummer Ct., Staten Ct., or Plummer Dr.'s cul-de-sac) in the 14 years we have lived here. Is there someone who has done a study to determine the amount of pedestrian traffic these streets actually see? It would be great if someone could provide us with what the County believes is sufficient pedestrian traffic to warrant the consideration of a sidewalk. I am wondering why after 14 years of living in this area now a sidewalk is being proposed? I admit on my walks around the neighborhood I have often wondered why the sidewalks on Fox Chapel Dr. were never at least extended to Plummer Dr.? All the current streets with sidewalks are through streets and likely see more foot traffic than the cul-de-sac's do.

One of our more personal concerns is that we will lose space to park cars in our cul-de-sac. We currently have a truck parked out front where we paid to lay asphalt for ease of parking out of the street without turning vehicles being impacted. One of my neighbor's consistently has problems with one of his renters parking their cars in the turn so when plows and other larger vehicles (trash trucks, lawn care trucks with trailers, FedEx, UPS) drive through they either ride up on the median curb or have to stop and back up to make a smaller turn radii. I have sat and watched this numerous times. It's actually a bit of a joke in our house how the plows have on occasion blocked the car in with mounds of snow since they can't drive all the way around. In an attempt to clear away as much as they can. This brings up another crowding concern. Many people rely on being able to park along these areas and with a new sidewalk you would be creating a choke point. I for one, do not want our street (Staten Ct.) to turn into the restrictive driving situation that is already a problem in the quarter acre lot side of the development. Please send someone on any given evening or weekend to drive through Staleybridge Rd, St. Johnsbury Ln, and Queens Cross Ln. and you will see what you will end up doing on our street if these sidewalks are added. For that matter you could probably send someone during the day as there are still many vehicles still parked along both sides and there are many points at which only one car can pass at a time. We have personally seen too many cars filling the driveways thus blocking the sidewalks on all the above mentioned streets. Who is responsible for maintaining those areas remain unblocked if you want pedestrians to be able to traverse these sidewalks without having to walk in the street?

Your proposal says 5 ft. I assume that means curb and grass area then 3 foot sidewalk. If you send a person to drive through those roads please have them get out of their car and actually look at how the grassy areas are treated. Most people pull up on the curb into those areas in an attempt to get their vehicles out of the way as much as possible. Why are

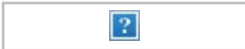
you going to create this problem for us when it isn't successful in 85% of our development?

Another concern is any maintenance for these sidewalks. When we get snow the plows will likely damage the corner of the sidewalk that will be between 11404 and us 11400. As it is, we place reflectors poles out every year so as to help indicate to the plows where the grass starts. Who will come out and repair this when it happens and how long will it take for a repair to actually happen?

Another more personal concern is that I am a Disabled Vet and I am NOT capable of all that snow removal. Much less in a 24 hr period after the snow stops. I know this isn't a major concern to any of you County folks but one of the many reasons I moved here was because there wasn't an HOA. So we do not have a landscape service that our community all pays for. You would be adding too much square footage of responsibility creating that much more of a financial burden on us to maintain. Let me also add that when the plows do come around they will be loading up those sidewalks with all the snow/ice from the roads in fact doubling/tripling the amount of snow you, the County will expect us to remove or penalize us with a fine.

I sincerely hope you will allow our concerns to be added to the rest. Thank you for your consideration.

*Thx,  
Nikia Perkins  
NSWC Carderock  
9500 MacArthur Blvd.  
Bethesda, MD 20817  
Bldg 18 Rm 186  
Office:301-227-5928  
Lab:301-227-1188*



**From:** [Gerald Haas](#)  
**To:** [Main, Lori J.](#)  
**Subject:** Re: Fox Chapel Community Sidewalk Proposal  
**Date:** Friday, November 12, 2021 10:18:26 AM  
**Attachments:** [image001.png](#)  
[image002.png](#)

---

**[EXTERNAL EMAIL]**

Lori,

I am OPPOSED to this DRASTIC over kill of a sidewalk plan.. It is a shame when individuals leave a community that has sidewalk installed to walk into another community without sidewalks, then complain about walking on streets with no sidewalks. Even going to the point of making FALSE claims in their statements. Individuals walk straight past a street WITH SIDEWALKS and less traffic, then complain. NOONE,,, NOONE with common sense would bypass a sidewalk to walk on a road with no Sideway. (somethings you cannot fix) It is another display of how dis-functional the county offices are ... there have been multiple attempts to get the traffic on Plummer to slow down with a MAJORITY support (from those on Plummer Dr) for SpeedBumps on Plummer due to speed,( mainly from the side community). But nothing!!!! County offices cannot support a community directly...

County office has a Bias play in emailing those that potentially indicated support for sidewalks, INTENTIONAL omitting reminders to those that may be OPPOSED to the Sidewalk Plan.. Mailer were sent to each address. Why would select individuals get a second reminder, without coverage to the entire community? THIS IS A DIRECT DISPLAY OF THE COUNTY PRESENTATIVE'S BIAS TO THE PLAN....!!!!!!

This is a FOUL from jumpstreet!!!

Gerald Haas  
19101 Plummer Dr.  
Germantown MD. 20876  
240-426-2055

---

**From:** Main, Lori J. <Lori.Main@montgomerycountymd.gov>

**Sent:** Tuesday, November 2, 2021 4:43 PM

**To:** davgonzalez@gmail.com <davgonzalez@gmail.com>; syau6579@yahoo.com <syau6579@yahoo.com>; kjmags1@yahoo.com <kjmags1@yahoo.com>; abuanantuono@yahoo.com <abuanantuono@yahoo.com>; threlkeld@gmail.com <threlkeld@gmail.com>; Incautosupply@yahoo.com <Incautosupply@yahoo.com>; ntnbud@aol.com <ntnbud@aol.com>; soniamunozhomes@gmail.com <soniamunozhomes@gmail.com>; maxvillalta7522@yahoo.com <maxvillalta7522@yahoo.com>;



yooniehoehn@gmail.com <yooniehoehn@gmail.com>; ftpadonou@gmail.com <ftpadonou@gmail.com>; mnarayan@hns.com <mnarayan@hns.com>; pop\_eye\_81@hotmail.com <pop\_eye\_81@hotmail.com>; vishnusharmal454@gmail.com <vishnusharmal454@gmail.com>; kristibelcher@gmail.com <kristibelcher@gmail.com>; stevenhancock@gmail.com <stevenhancock@gmail.com>; billiams@aol.com <billiams@aol.com>; Thoanluutran@hotmail.com <Thoanluutran@hotmail.com>; cdd245@gmail.com <cdd245@gmail.com>

**Cc:** Gonzales, Robert <Robert.Gonzales@montgomerycountymd.gov>; Holley, Geary <Geary.Holley@montgomerycountymd.gov>; Berrios, Juan A. <Juan.Berrios@montgomerycountymd.gov>  
**Subject:** Fox Chapel Community Sidewalk Proposal

Hello Sidewalk Installation Requestors,

I am contacting you today regarding the Fox Chapel Sidewalk Proposal, which was proposed in response to your requests for sidewalk installation on Plummer Drive, Plummer Court and Staten Court. I have attached a copy of the proposal documents for your easy reference.

As you may be aware from your receipt of the sidewalk proposal, we are currently in the initial comment period of our process. The comments we receive from the Fox Chapel community regarding the proposal will determine whether or not the proposal goes forward to public hearing. If the proposal does not receive sufficient supporting comments during this period, the proposal may be suspended, or cancelled. If suspended, there will be no public hearing and no installation. For this reason, I wanted to make sure you understand that the sidewalk request you submitted does not count as a supporting comment. The issuance of the proposal starts our process anew, and as such, if you wish to support the installation, you will need to submit a supporting comment. Comments may be submitted using the attached form or you may simply send your comments in an email to me at this address.

Currently, we have received 2 opposing and 0 supporting comments. Luckily, there are still 10 days left in the comment period; if we were making the decision whether to proceed or not at this time, the proposal would surely be suspended.

The sidewalk proposal is not carved in stone. If you feel that you would prefer sidewalk on only one side of the street, please let us know in your comments. Likewise, if you support sidewalk installation on one street but not the other roadways, please let us know that too. This is not an all or nothing proposal.

Thank you for allowing me the opportunity to clarify our process and comment period. Have a wonderful evening and please let me know if you have any questions.

Best,

*Lori*

**Lori Jean Main**

**Planning Specialist**

**Annual Sidewalk Program**

**Montgomery County Department of Transportation**

Division of Transportation Engineering

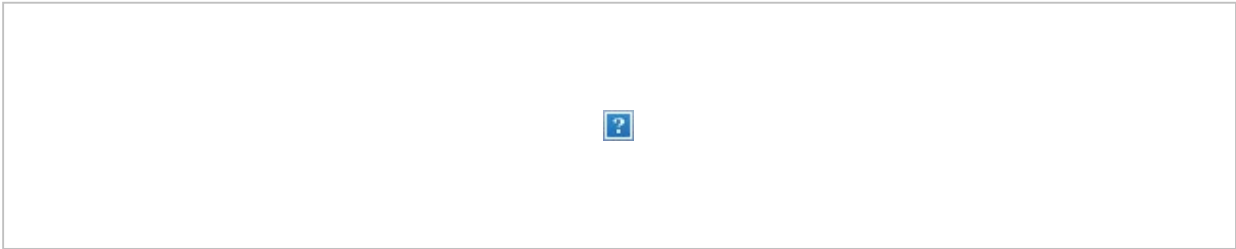
100 Edison Park Drive

4th Floor  
Gaithersburg, Maryland 20878

lori.main@montgomerycountymd.gov  
240-777-7271



Take 10 minutes to be counted now – visit: <https://2020census.gov/>



For COVID-19 Information and resources, visit: [www.montgomerycountymd.gov/COVID19](http://www.montgomerycountymd.gov/COVID19)

**From:** [Jon Reed](#)  
**To:** [DTE SIDEWALK](#)  
**Subject:** Old Fox Chapel/Plummer Dr., etc sidewalk program  
**Date:** Saturday, November 13, 2021 4:08:31 PM

---

[EXTERNAL EMAIL]

Stop the music and stop the sidewalk program! We bought here because of the quiet atmosphere of the county road, no fence openness of the neighborhood. The Montgomery County Police even recognize the quietness of the neighborhood because they have refused to control the few street speeders that come through and we don't even get enough traffic to warrant speed bumps to help control those same speeders. Therefore, we (my wife and I) oppose any sidewalks.

Jonathan A. and Patricia L. Reed, 19112 Plummer Drive, Germantown, MD 20876

Division of Transportation Engineering, Sidewalk Program

100 Edison Park Drive, Gaithersburg, MD 20878

### **Comments & Feedback Survey**

We live in Fox Chapel at 19200 Plummer Drive, Germantown, MD 20876

Our names are **Edgar and Nora ETZ**. We have lived at the above address since 1976 and in Fox Chapel since 1973.

**We do not want the construction of sidewalks on Plummer Drive (either side or both) nor on Plummer Court (either side or both) nor on Staten Court (either side or both).**

Our four children attended Fox Chapel Elementary School since it was built and walked without any problem to and from school. They were bused from Fox Chapel for Junior High School and High School.

It would be a waste of county expenditure to finance the proposed project for the sake of individuals not even living on our streets. They have sidewalks to use for traversing the Fox Chapel community.

We have concerns about the vehicles passing our house travelling at a high rate of speed. We have been told a study was done a few years to determine if Plummer Drive is a candidate for speed bumps. We never saw the results and at what time of day and season this study was completed. Late afternoon and weekends during school are times that should have been studied. During our years here 2 telephone poles and 3 mailboxes have been destroyed due to excessive speeding.

I will close with again stating **NO to sidewalks**.

Edgar and Nora Etz **301-972-1583 H 240-888-5275 Cell**

19200 Plummer Drive **edgaretz@comcast.net**

Germantown, MD 20876 **norametz@gmail.com**

William Bonde  
19217 Plummer Drive  
Germantown, MD 20876  
will@forwardbounding.com  
240-490-1962

November 11, 2021

Division of Transportation Engineering Services  
100 Edison Park Drive  
4th Floor  
Gaithersburg, Maryland 20878

To Whom It May Concern:

While I can list many personal reasons I do not support sidewalks being installed, I will focus on one that extends beyond myself: priorities.

I ask that you picture this: a neighborhood that didn't need sidewalks until an individual who does not live in the neighborhood, fills out requests for individuals, putting their names on it without permission, providing pre-stamped envelopes to mail it in, and finally mailing them to all the residents. As far as I have seen, these are the only way requests have been made. They were not organic requests. My understanding is the majority of requests came from individuals who do not even live in the affected area.

If you truly believed sidewalks were so necessary, would you have not said anything for years - and for some, decades?

Clearly, the need for sidewalks cannot be great as no one took action until someone else did it for them. Until someone else put a form in front of them to sign, there was no need for sidewalks. Additionally, the area the individual who started the movement, which it is my understanding my of the requests came from, has continuous access to Frederick Road by sidewalk currently. No access would be added.

With a limited budget, I feel strongly that the money could be better allocated somewhere it is truly needed.

Additionally, I live in the second house in from Frederick Road. There is relatively minimal foot traffic to Frederick Road. Of the small amount of foot traffic, the vast majority walks from the bus stop in front of 19216 and 19212 Plummer Drive, and then turn right onto Fox Chapel Drive, or the same pattern in reverse. I currently worked from home most days or the week and observe this daily. Exceptions to this pattern seem rare. The bus stop could be moved to the corner of Frederick Road and Chapelgate Road and circumvent the need to add sidewalks.

For your reference, I am including a sample of the pre-filled envelopes.

Sincerely,

A handwritten signature in black ink, appearing to read 'William Bonde', written in a cursive style.

William Bonde

# Exhibits

## **Exhibit A**

Prefilled form created by David Gonzalez, sent to neighbors and myself. No permission was given to fill out the form.

## **Exhibit B**

Letter included in mailing from David Gonzalez

## **Exhibit C**

Mailing envelope from David Gonzalez containing prefilled contents.

## **Exhibit D**

Prestamped envelope created by David Gonzalez, using my name without permission.

## **Exhibit E**

Business card included in mailing

TO REQUEST A SIDEWALK INSTALLATION PLEASE COMPLETE AND PRINT THIS FORM AND SEND TO:

Division of Transportation Engineering Services  
100 Edison Park Drive, 4th Floor  
Gaithersburg, Maryland 20878  
Attn: Sidewalks Program

# Exhibit A

## REQUEST FORM FOR SIDEWALK INSTALLATION

Your Name: WILLIAM BONDE	
Address: 19217 PLUMMER DR, GERMANTOWN, MD 20876	
Daytime Phone:	
Email Address:	
Where do you think a new sidewalk is needed? (Street name) <b>Plummer Drive, Plummer Court, Staten Court</b>	
What are the limits of the new sidewalk? (Street name or a description of the beginning and ending locations) <b>MD 355 (Frederick Road) to Staleybridge Road</b>	
On which side of the street should the sidewalk be constructed? <b>Both sides</b>	
Please check any of the following existing roadway conditions which support sidewalk installation	
<input checked="" type="checkbox"/>	provide access to walking schools
<input type="checkbox"/>	experience vehicular/pedestrian crashes
<input checked="" type="checkbox"/>	connect to an existing network of sidewalks
<input checked="" type="checkbox"/>	provide access for the disabled
<input checked="" type="checkbox"/>	show evidence of a worn path
<input checked="" type="checkbox"/>	provide access to pedestrian generators within a half mile radius, such as transit stops, libraries, parks, places of worship
<input checked="" type="checkbox"/>	are identified in the Area Master Plan for sidewalk installation
Other useful information? - There are no traffic-calming devices on Plummer Drive - Drivers typically drive above the posted 25 MPH signs - Neighbors placed rocks so that the vehicles do not step on their lawns - Paths are noticeably worn - Pedestrians can get hit at any moment - This path connects to other sidewalk system, and also to the bus stop at MD355	

# Exhibit B

David Gonzalez  
18969 Abbotsford Cir  
Germantown, MD 20876  
Tel. (240) 643-4831  
Email: davgonzalez@gmail.com

January 2<sup>nd</sup>, 2021

Dear neighbor,

By way of introduction, my name is David Gonzalez, and I am your neighbor at Abbotsford Circle where I moved with my family in 2008. I would like to bring your attention and consideration to an issue observed in our neighborhood. Over the years, my wife and I have noticed a dangerous situation for the pedestrians and cyclists who use Plummer Road, Plummer Court and Staten Court. We do not have sidewalks in these roads. Users typically use them to reach Frederick Road (MD 355) or for exercise – walking, running, or cycling. My wife and I use it for frequent walks, and, in all honesty, we feel unsafe while walking on these paths. We have experienced very close calls with cars speeding above the posted 25 MPH sign. Several observations come to mind in this regard:

- There are no traffic-calming devices on Plummer Drive.
- Drivers typically go well above the posted 25 MPH signs and pedestrians could get hit at any moment.
- Neighbors have placed big rocks so that the vehicles are not driven on their lawns.
- Paths on lawns are noticeably worn.
- This path connects to other sidewalk system (Staleybridge Road), and to the MD355 sidewalks and bus stop.

I sent the first request for a sidewalk construction to the Montgomery County Department of Transportation (MoCo DOT) in 2014. They acknowledged receipt and scheduled a field investigation for the feasibility of the proposed project. I followed up in the fall of 2016 and summer of 2017, when MoCo DOT confirmed that they had completed an impact study in February 2016. I followed up in November 2018 and the response was that they had a plan to revisit the impact study but needed more support from the neighbors, since MoCo DOT receives hundreds of requests per year and have a limited construction schedule, and those roadways that have received multiple requests by different people or from a HOA are typically seen as having more urgency. This email exchange is available on request.

Based on that response from MoCo DOT, my wife and I decided it was time to reach out to our neighbors to get your support for the construction of sidewalks on Plummer Drive, Plummer Court and Staten Court, to improve the safety of users, and for the embellishment of our neighborhood. (Note: I obtained your name and address from public records.) If you agree a sidewalk would benefit the community, we ask you to submit a sidewalk request. I have enclosed a stamped self-addressed envelope with a pre-filled sidewalk request form with your name and address. You would only need to write your daytime phone and email address and send it to MoCo DOT. If you do, please contact me via email or phone to tally up how many neighbors sent their requests.

For your information, I am including here MoCo's Pedestrian Master Plan website. I added the above paths in the Shortcut Map. I am also including MoCo's budget website for the sidewalk program.

<https://montgomeryplanning.org/planning/transportation/pedestrian-planning/pedestrian-master-plan/pedestrian-shortcut-map/>  
<https://apps.montgomerycountymd.gov/BASISCAPITAL/Common/Project.aspx?ID=P506747>

As a final note, please be aware that this campaign is funded by me in its entirety. I have no other intention than ensuring Montgomery County is fully aware of our urgent need for sidewalks. We could make this happen joining forces and working together. Please do not hesitate in contacting me if you want to discuss this matter further.

Thank you for your time and attention. Very respectfully,

David Gonzalez

(Enclosures)



WILLIAM BONDE  
19217 PLUMMER DR  
GERMANTOWN, MD 20876

The Gonzalez-Adams Family  
18969 Abbottsford Cir  
Germantown, MD 20876

Division of Transportation Engineering Services  
100 Edison Park Drive, 4th Floor  
Gaithersburg, MD 20878  
Attn: Sidewalks Program



CAPITAL DISTRICT 208  
4 JAN 2021 PM 3 1

WILLIAM BONDE  
19217 PLUMMER DR  
GERMANTOWN, MD 20876

**Exhibit C**

**Exhibit D**

**Exhibit E**

**DAVID GONZALEZ**

IT Project Manager

240.643.4831 | [davgonzalezm@gmail.com](mailto:davgonzalezm@gmail.com)

18969 Abbotsford Cir, Germantown, MD 20876, USA

**From:** [Vishnu Sharma](#)  
**To:** [Main, Lori J.](#)  
**Subject:** Fox Chapel Community Sidewalk Proposal: Written testimony from a Plummer Dr resident  
**Date:** Tuesday, December 28, 2021 5:20:19 PM

---

**[EXTERNAL EMAIL]**

Dear Lori,

We are residents of 19104 Plummer Dr, Germantown, MD 20876, and would like to submit our written testimony to **STRONGLY SUPPORT** the Fox Chapel community sidewalk proposal because of the following reasons:

1. We have two small daughters and old parents. It is very unsafe and scary for all of us to walk on these roads whenever we step outside our home.
2. The 'Plummer Dr' road connects 'Fedrerick road' to other 4 roads. It is a very busy and narrow road that always has vehicles running at a faster speed all the time.
3. It is not only about safety of the people who lives next to this road, but also about the safety of a lot of people who use this road all the time as they live next to the roads that are connected to Frederick road via Plummer Dr Rd including Abbotsford Cir, Staleybridge Rd, Queen Cross Ln, St Johnsbury Ln, Kings Arrow Ct, among others.
4. Even from the perspective of a car or any vehicle driver, it is very unsafe to drive a vehicle when kids, elderly or even young people are walking on the road.
5. Some residents living next to these roads have put big stones in their yards next to the roads. While it 'saves' their grass and mailboxes, it forces pedestrians to walk on the road.
6. It is very dangerous to walk on this road especially at night due to the curvy road and dim street lights. I have seen people using headlamps, flashlights to protect themselves. If you have any doubts in your mind, I would request you to just walk on this road in the evening and you will realize the plight of the pedestrians.
7. It is very unfortunate and sadly surprising that we don't have sidewalks on these busy roads. You will surely build the sidewalk one day, but it's just a matter of time. It is better to construct it sooner for everyone's safety rather than later when someone gets seriously injured due to negligence.

Thanks and regards,  
Vishnu and Chetna Sharma

**From:** [Elizabeth Gaither](#)  
**To:** [Main, Lori J.](#)  
**Subject:** Sidewalk for fox chapel  
**Date:** Friday, January 7, 2022 7:31:57 PM

---

[EXTERNAL EMAIL]

To whom it may concern,

Unfortunately I am not able to attend the virtual public hearing so I am writing this email to weigh in on this topic. I have lived here on Plummer Drive for 10 years. I walk my dogs almost everyday and to be honest it's terrifying... That is not an exaggeration! First off people speed on our street all the time and I am just constantly having to look forward and back for cars when walking the dogs and most of the time I am walking on the grass to stay off the street. But even then people come so close to the edge of the street and I have to pull the dogs to the side even more as the cars skim the edge. When I leave my house for our walks or jogs I go as quickly as I can down the block until I can get to the end of the street where a sidewalk begins. I know that this will not be a convenient process to put in a sidewalk but I am afraid someone is going to get hurt. I do believe in the long run it would be good for the community... There have already been multiple mailboxes hit and destroyed right where people walk thank goodness nobody was walking there at the time. But we don't want to wait until somebody does get really hurt in order for something to be done. Also I have great concerns for the safety of the children I see getting off their school buses and walking home unattended and the cars coming quite close to them...I do think a sidewalk would benefit them greatly as well! I hope this helps give some insight from a residents perspective who loves her neighborhood and neighbors.

Thank you for your consideration!

Take Care and stay safe!

Elizabeth Gaither

Sent from my iPad

**From:** [Griffith, Elizabeth A](#)  
**To:** [Main, Lori J.](#)  
**Subject:** Fox Chapel Side walk  
**Date:** Wednesday, January 12, 2022 8:13:20 AM

---

**[EXTERNAL EMAIL]**

Dear Ms. Main,

I am writing to express support of the Fox Chapel neighborhood sidewalk project. A new and safe sidewalk route will help our students walk to school. Many families travel by foot in the neighborhood. They deserve to have a nice way to get to school each day.

Thank you for your time in beginning to address this issue by making plans for the route, tree removal and construction details. This project will be worthwhile and help our whole community.

Thank you,

Elizabeth Griffith  
General Music Specialist and Choral Director  
Fox Chapel Elementary School