



# VISION ZERO

ZERO TRAFFIC DEATHS IN MoCo

# VISION ZERO UPDATE

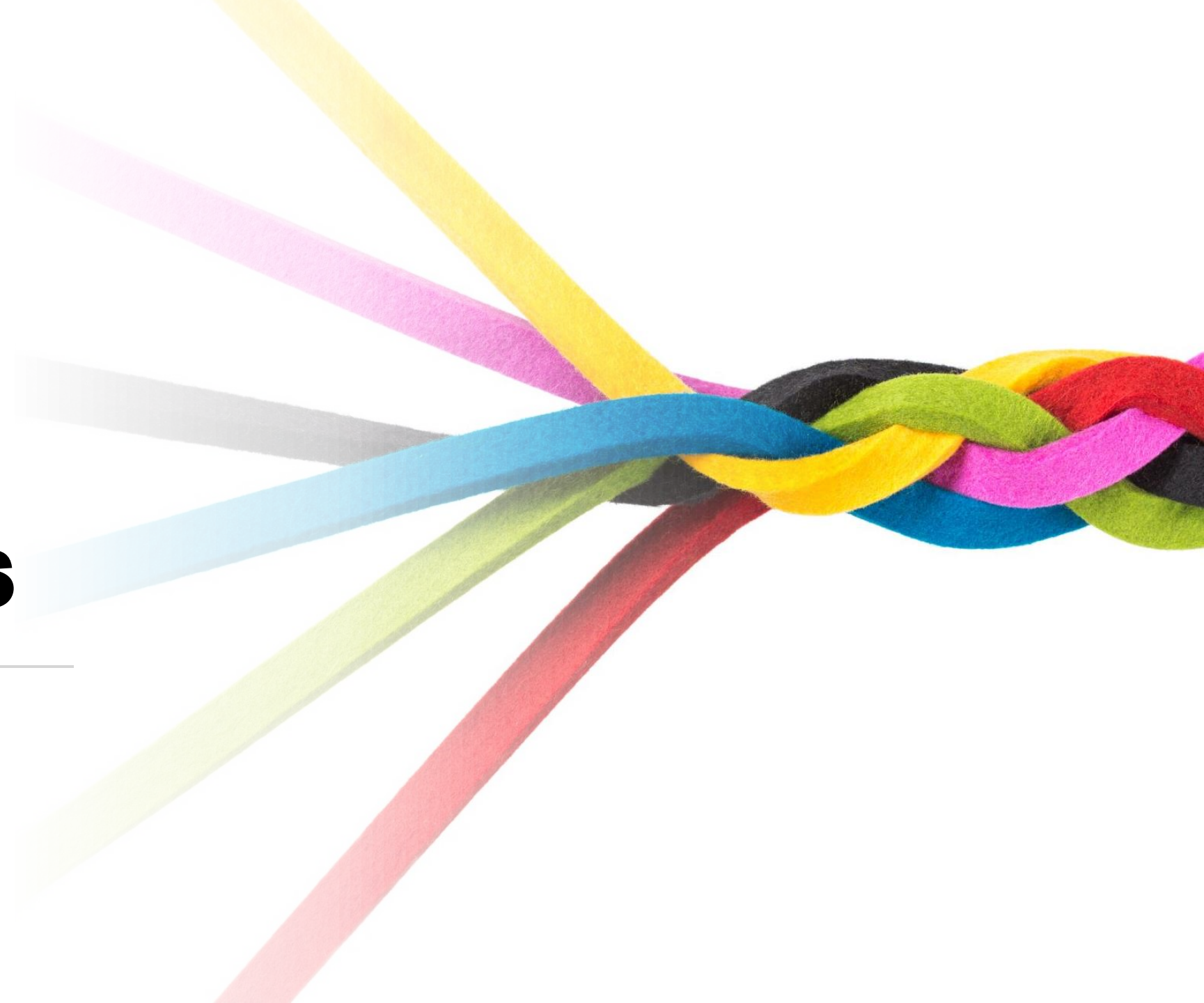
FEBRUARY 28, 2022 - Silver Spring Citizen's Advisory Board, TREE Committee



# **ALIGNING SAFETY STRATEGIES**

---

Interplay with local, state, and federal efforts





# What is Vision Zero?

Building Layers of Safety to Prevent Serious and Fatal Injuries on Our Roadways

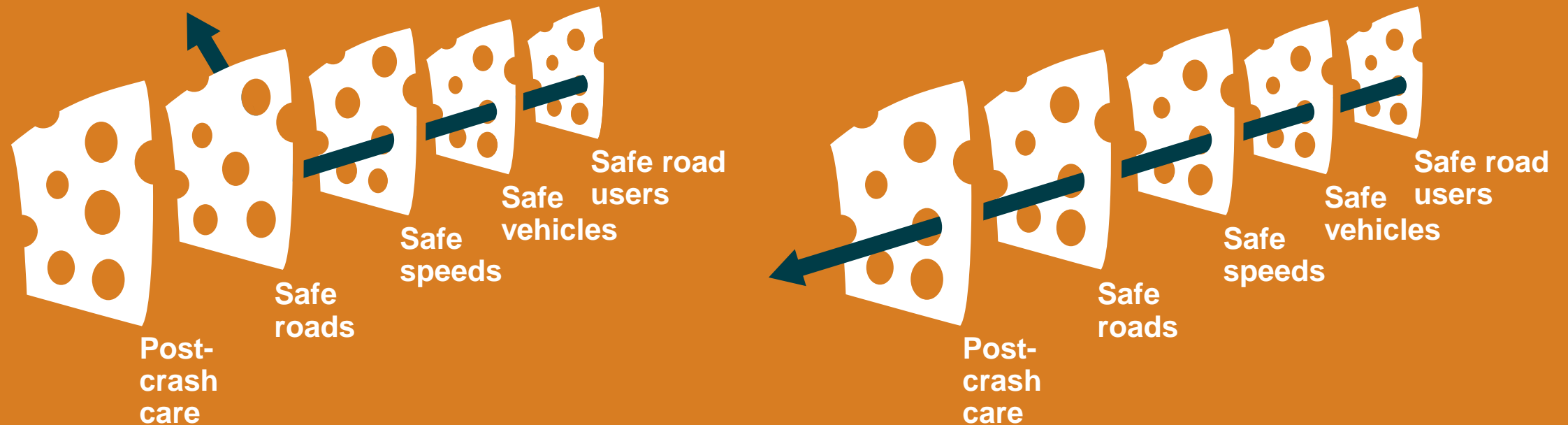


# Layers of Systematic Safety

## The 5 Safe System Elements Create Redundancy

The “Swiss Cheese Model” of redundancy creates layers of protection

Death and serious injuries only happen when all layers fail



# INTERGOVERNMENTAL COORDINATION ON VISION ZERO

Different Names and Interim Targets, Same End Goal



# ACTION PLAN & WORK PLAN

How the long-term and short-term plans relate

2030 Plan	Vision Zero						
Plan Pillars	Complete Streets		Multimodal Future			Culture of Safety	
Safe System Alignment	Safe Streets	Safe Speeds	Safe Transportation	Safe & Sustainable Communities	Safe Vehicles	Safe People	Safe Post-Crash Emergency Response and Care
Actions	17 Actions	3 Actions	10 Actions	1 Action	2 Actions	10 Actions	2 Actions
FY22 Work Plan	63 Tasks*	4 Tasks	15 Tasks	1 Task	2 Tasks	22 Tasks	2 Tasks

\*There are 66 total tasks under Safe Streets, but 3 are also listed under Safe Transportation, so removed from chart above to avoid double counting.

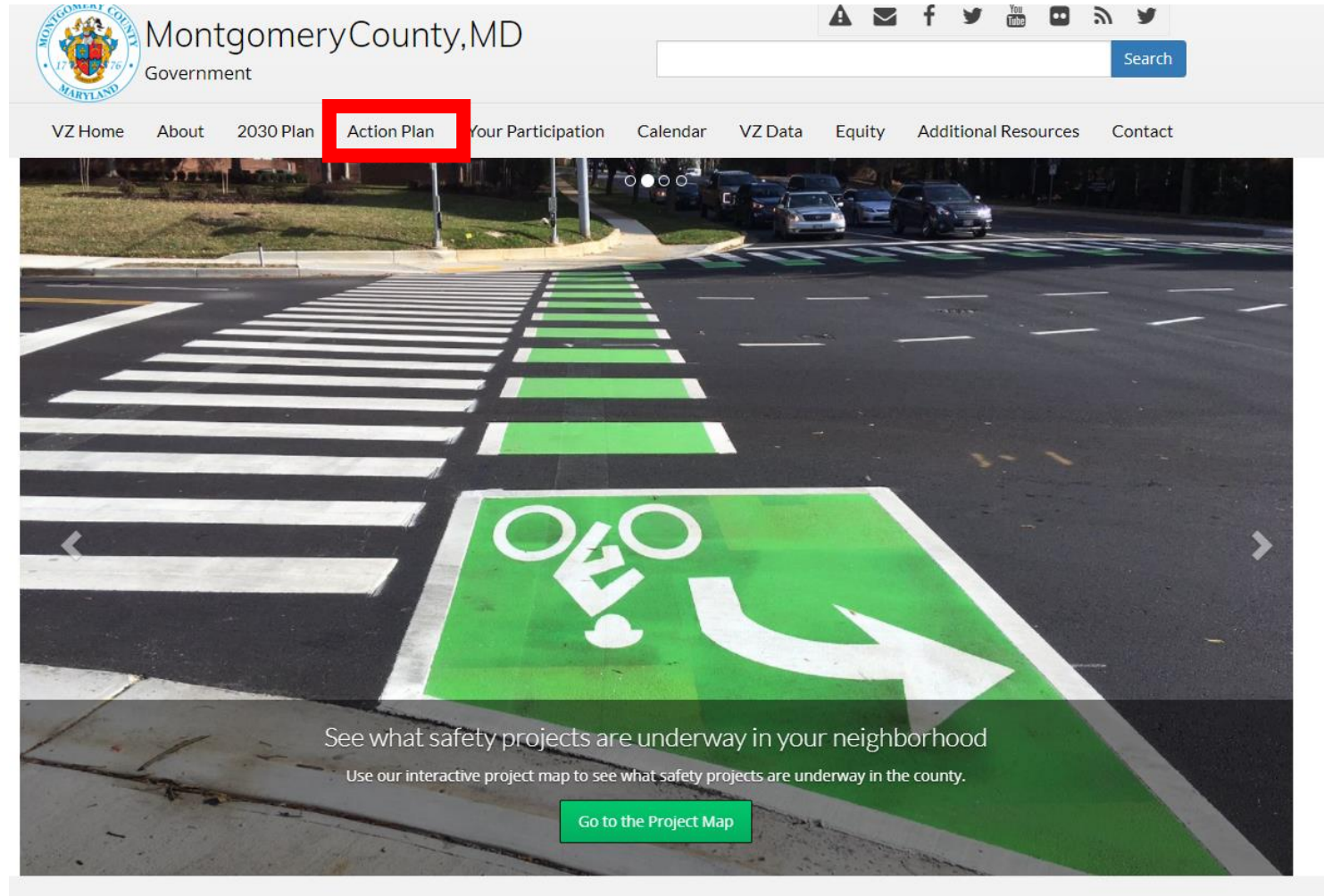
# Priority Action Items

## Top 10 action items

- S-1: High Injury Network Projects
- S-3: Frequent, Protected Crossings
- S-4: Signal Timing and Phasing
- S-7: Separated, Low-Stress Bicycle Facilities
- S-11: Improved Lighting
- S-13: Sidewalk Construction and Upgrades
- M-1: Examine Speed Limit on all Projects
- T-1: Ped and Bike Improvements along New Transportation Projects
- T-2: Transit Stop Safety
- P-4: Ending Impaired Driving Deaths

# FY22-23 Work Plan

Where can I find the full text of the current two-year work plan?



The screenshot shows the Montgomery County, MD Government website. The header includes the county seal, the text "Montgomery County, MD Government", and a search bar. A navigation menu below the header contains the following items: "VZ Home", "About", "2030 Plan", "Action Plan" (highlighted with a red box), "Your Participation", "Calendar", "VZ Data", "Equity", "Additional Resources", and "Contact". Below the navigation menu is a large banner image of a street with a green-painted bike lane and a white crosswalk. The banner contains the text: "See what safety projects are underway in your neighborhood" and "Use our interactive project map to see what safety projects are underway in the county." Below this text is a green button labeled "Go to the Project Map".





# Implementing Vision Zero

---

Project  
Highlights



# RECENT HIGHLIGHTS

---

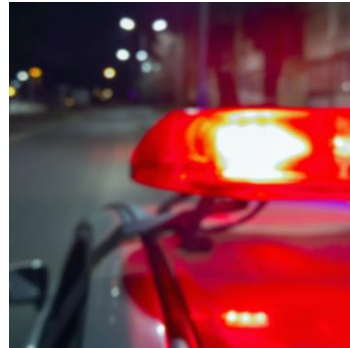


## **New Beacons**

Installed 3 Pedestrian Hybrid Beacons along Bel Pre Road.

Outreach to drivers and pedestrians at local shopping plazas and schools to raise awareness of new devices.

Installed PHBs at Spring St and First Ave and two along Fenton St in Silver Spring.



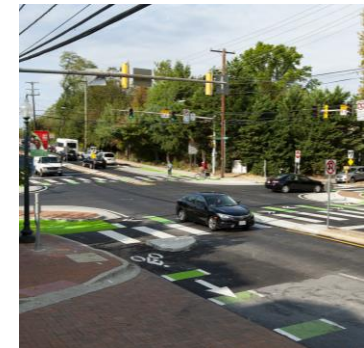
## **Holiday Task Force**

Multi-agency enforcement and education initiative in November-January to curb impaired driving during the holidays.



## **Safe Walking Routes**

Advancing Grove Street Neighborhood Greenway Pilot with installation of walking lane and traffic calming devices.

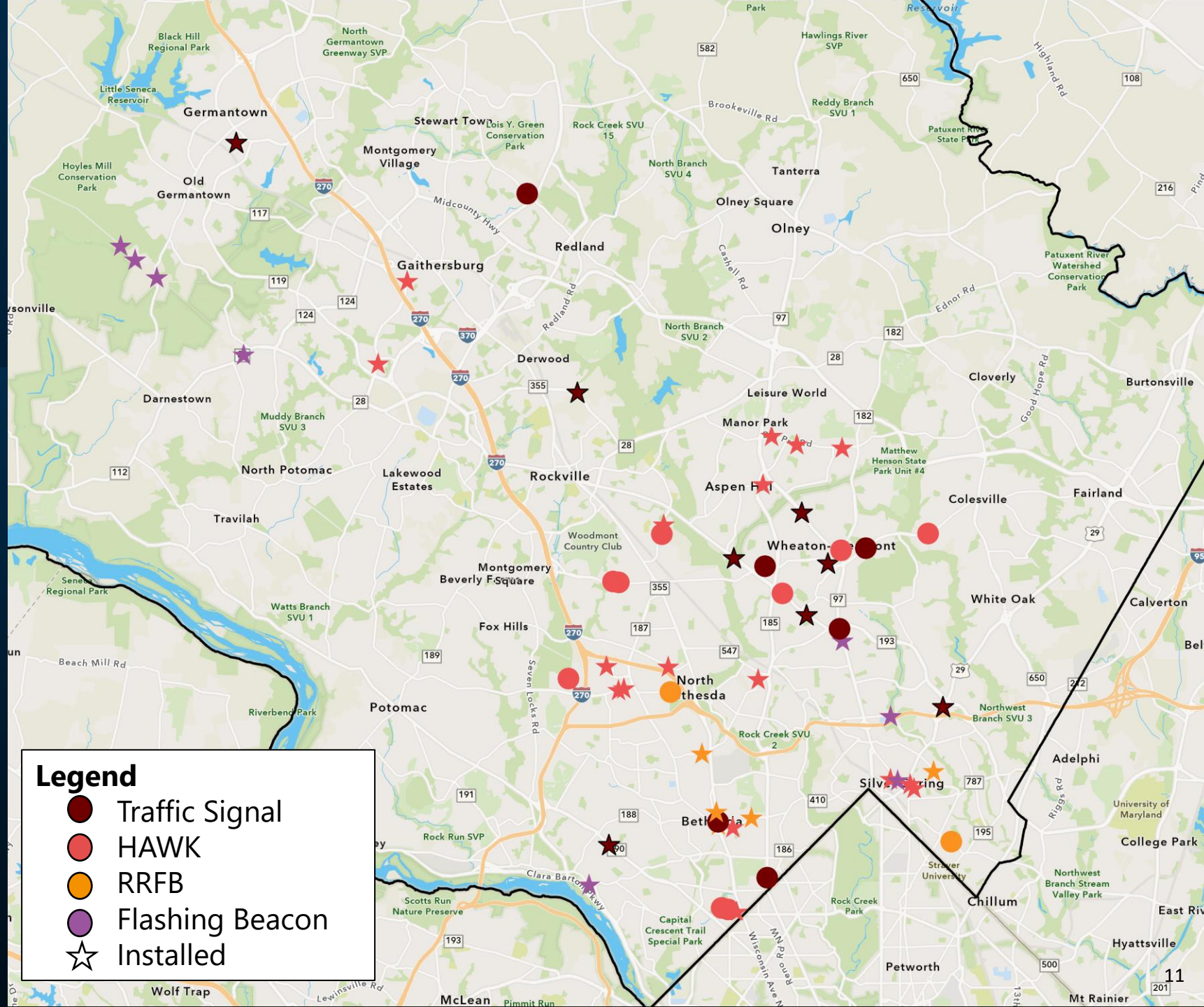


## **Bikeway Construction**

Planning Place  
Bethesda Loop Projects  
Emory Lane/ Muncaster Mill  
Kensington Pkwy  
White Flint West  
Frederick Rd

Over 30 new installations since Vision Zero started

# NEW SIGNAL AND BEACON INSTALLATIONS





# Trail Crossing Improvements

Changes to trail crossings can include upgrading the crosswalks to high visibility, realigning crosswalks, sightline adjustments, improved signage, and new beacons.



Cabin John at Tuckerman Lane



Sligo Creek at Dennis Avenue



# Bikeway Projects Led by MCDOT

## Currently Under Design or Construction

### Design

- [Fenton Street](#) from Cameron Street to King Street
- Amherst Avenue from Arcola Avenue to Windham Lane
- [Cheltenham Drive](#) from Woodmont Avenue to Pearl St
- [Metropolitan Branch Trail](#)

### Construction

- [Bethesda Avenue/Willow Lane \(Capital Crescent Surface Trail Phase I\)](#) from Woodmont Avenue to Wisconsin Avenue
- [Woodmont Avenue Phase I](#) from Montgomery Lane to Miller Avenue
- [Montgomery Lane](#) from Woodmont Avenue to MD355
- Marinelli Road from Rockville Pike to Nebel Street
- [Grove St](#) from Bonifant Street to Sligo Avenue
- [Cameron Street to Planning Place](#)
- [Emory Lane and Muncaster Mill Road](#) shared use path
- [Frederick Road](#) from Stringtown Road to Brink Road



# CE Recommended FY23-28 CIP Budget

\$433.0 million to support Vision Zero implementation

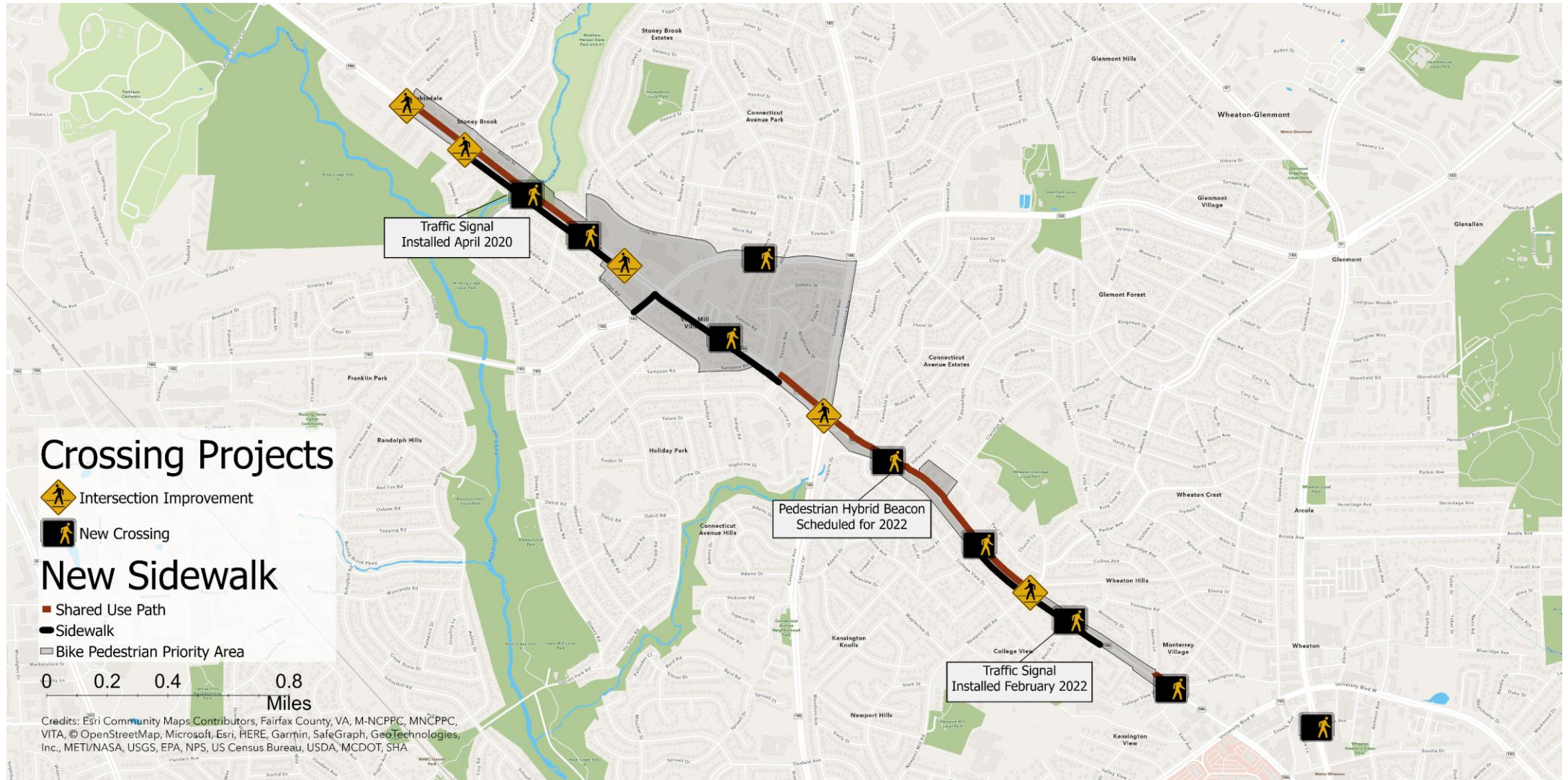


- New Sandy Spring Bikeway project
- New Tuckerman Lane Sidewalk project
- New US29 Pedestrian and Bicycle project to improve safe access to the FLASH transit stations
- Bicycle-Pedestrian Priority Improvements for Veirs Mill Road and the Wheaton Central Business District
- Increased funds for Safe Routes to School improvements and additional funds for sidewalk and curb replacement
- Community requested scope changes for Dale Drive Shared Use Path and Fenton Street Cycletrack projects
- More guardrails, traffic signals, traffic calming, street lighting, and improvements in bikeways, intersections, bus stops, and access to schools, parks, and trails.



# Viers Mill Road Safety Projects

## Implementing in conjunction with Bus Rapid Transit Project





# Education and Outreach Events

Recent Events and Upcoming Schedule





# Holiday Alcohol Task Force

## Promoting Safe Rides Home

- Over 260 DUI arrests for seven-week task force.
- 461 people utilized [SoberRide](#) in DC area.
- [Outreach to bars and restaurants](#) with free coasters with safety message.
- Launched new [Safe Ride Home page](#) to provide one stop shop for finding sober ride options in Montgomery County.



**★ HEADS UP ↓ ↑ PHONES DOWN ★**  
**★ VIDEO CONTEST ★**

**STUDENTS** do you know how to be pedestrian-safe when you're walking, riding, or driving?

**+ MORE COOL PRIZES!**

**GRAND PRIZE!** PS5, 5 HOURS MCPS SSL, \$800 amazon.com Gift Card, Smartwatch

Learn more at [MontgomeryCountyMD.gov/HUPD](https://MontgomeryCountyMD.gov/HUPD)

# Heads Up/ Phones Down Video Contest

Contest entries received from 2/1 – 2/22 from 170 high school students.

Will be used during April distracted driving awareness month campaign.





# Vision Zero Youth Ambassadors

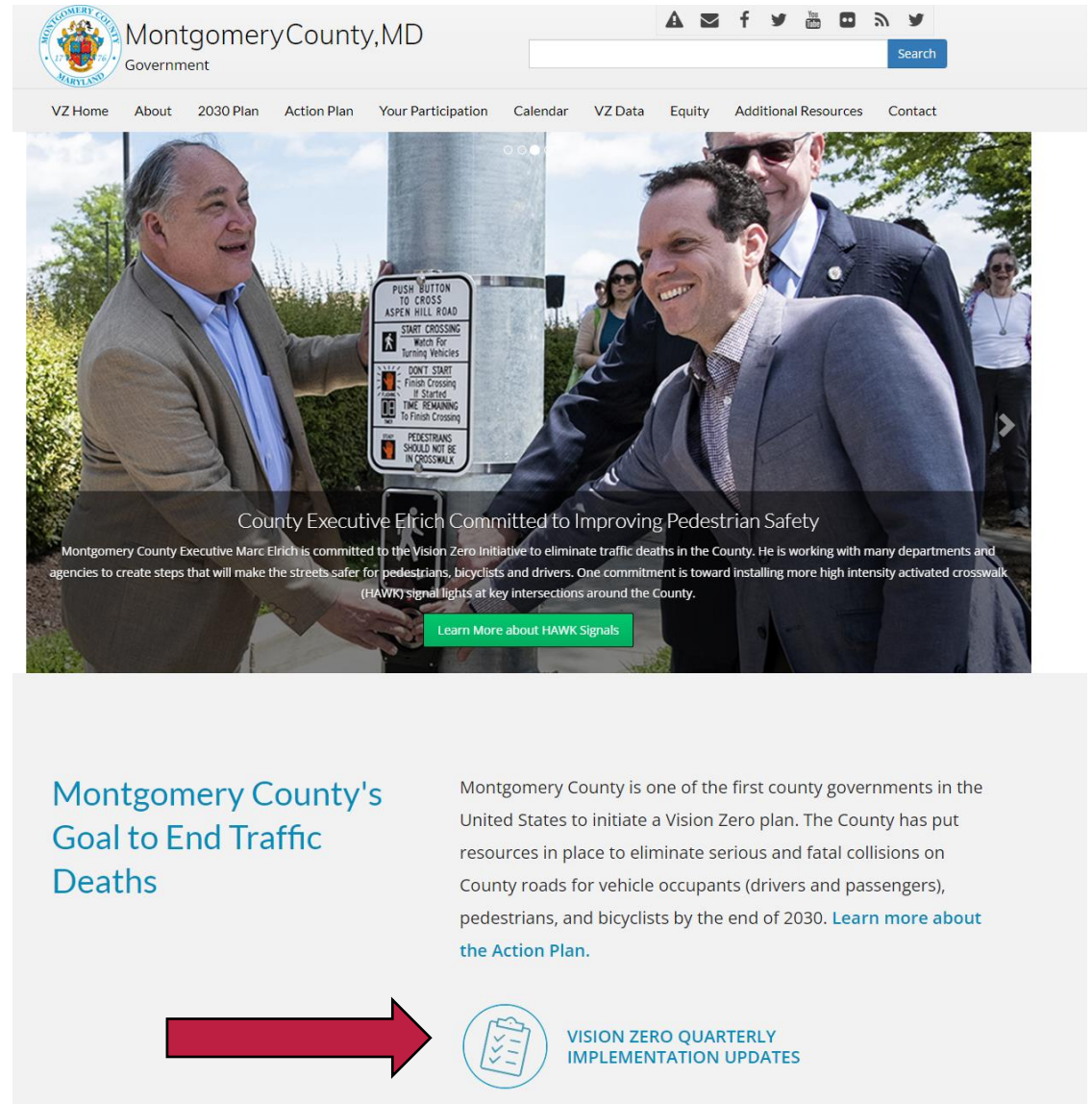


# BIKE RODEOS







# Latest Updates on Vision Zero Website

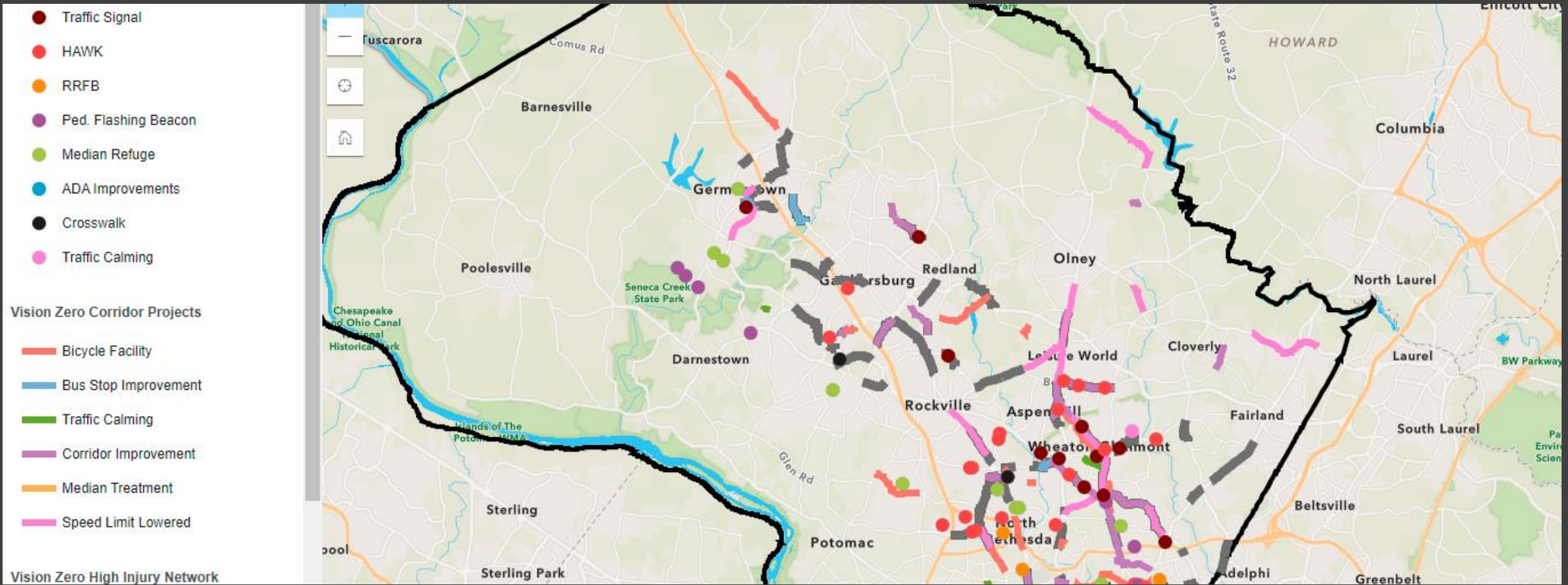


The screenshot shows the Montgomery County, MD Government website. At the top, there is a navigation bar with the county logo, the text "Montgomery County, MD Government", and a search bar. Below the navigation bar is a menu with links: "VZ Home", "About", "2030 Plan", "Action Plan", "Your Participation", "Calendar", "VZ Data", "Equity", "Additional Resources", and "Contact". The main content area features a large image of County Executive Marc Elrich and another man standing next to a HAWK signal light. The image has a semi-transparent overlay with the text "County Executive Elrich Committed to Improving Pedestrian Safety" and a sub-headline "Montgomery County Executive Marc Elrich is committed to the Vision Zero Initiative to eliminate traffic deaths in the County. He is working with many departments and agencies to create steps that will make the streets safer for pedestrians, bicyclists and drivers. One commitment is toward installing more high intensity activated crosswalk (HAWK) signal lights at key intersections around the County." Below the text is a green button that says "Learn More about HAWK Signals".

## Montgomery County's Goal to End Traffic Deaths

Montgomery County is one of the first county governments in the United States to initiate a Vision Zero plan. The County has put resources in place to eliminate serious and fatal collisions on County roads for vehicle occupants (drivers and passengers), pedestrians, and bicyclists by the end of 2030. [Learn more about the Action Plan.](#)

  **VISION ZERO QUARTERLY IMPLEMENTATION UPDATES**



## Project Map

Find the latest details on projects in your neighborhood by checking out the [interactive project map](#), visiting the [MCDOT project page](#), or the [SHA project portal](#).





**THANK YOU!**

Wade Holland, Vision Zero Coordinator

Wade.Holland@MontgomeryCountyMD.gov





# Appendix: Crash Data

---

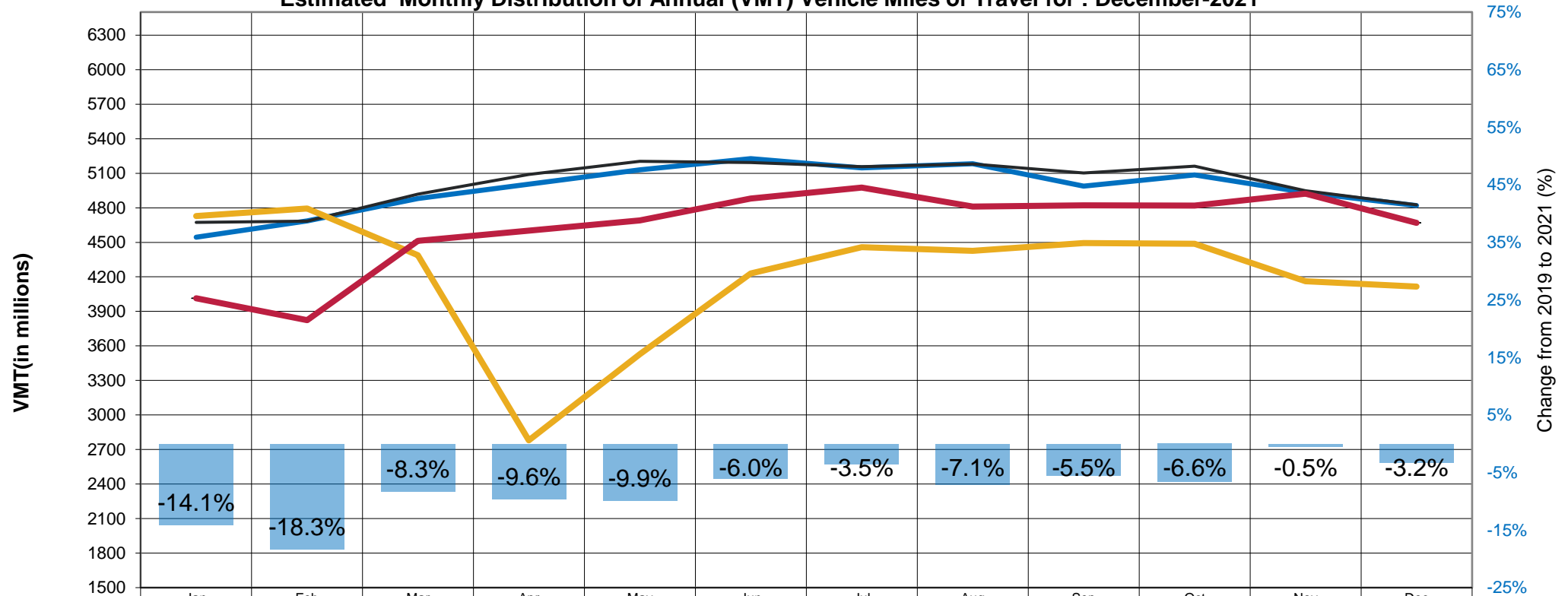
Recent Trends and  
Comparing to  
Pre-Pandemic Activity





# Maryland Traffic Volume

Estimated Monthly Distribution of Annual (VMT) Vehicle Miles of Travel for : December-2021



	Jan	Feb	Mar	Apr	May	Jun	Jul	Aug	Sep	Oct	Nov	Dec
Percent Change 2019-2021**	-14.12%	-18.34%	-8.3%	-9.6%	-9.9%	-6.0%	-3.5%	-7.1%	-5.5%	-6.6%	-0.5%	-3.2%
2018 VMT (Millions)	4544	4686	4881	5005	5130	5226	5147	5183	4989	5086	4933	4819
2019 VMT (Millions)	4674	4683	4919	5089	5204	5193	5158	5180	5102	5162	4947	4825
2020 VMT (Millions)	4728	4794	4389	2779	3527	4229	4458	4427	4494	4488	4163	4116
2021 VMT* (Millions)-Estimated**	4014	3824	4513	4602	4691	4881	4976	4811	4821	4819	4923	4669

NOTE: This chart displays estimated monthly Vehicle Miles of Travel compared with the previous year based on data collected at approximately 51 continuous count stations throughout the State. Estimates as of 1/5/2022.

# Note on the Data Presented

## Roadway Exclusions

The County Government receives crash data from the Maryland State Police (MSP) for the following local police agencies operating in Montgomery County:

- Montgomery County Police (MCPD)
- Rockville City Police Department (RCPD)
- Gaithersburg Police Department (GPD)
- Maryland-National Capital Park Police, Montgomery County (M-NCPPC Police)
- Takoma Park Police (TPPD)

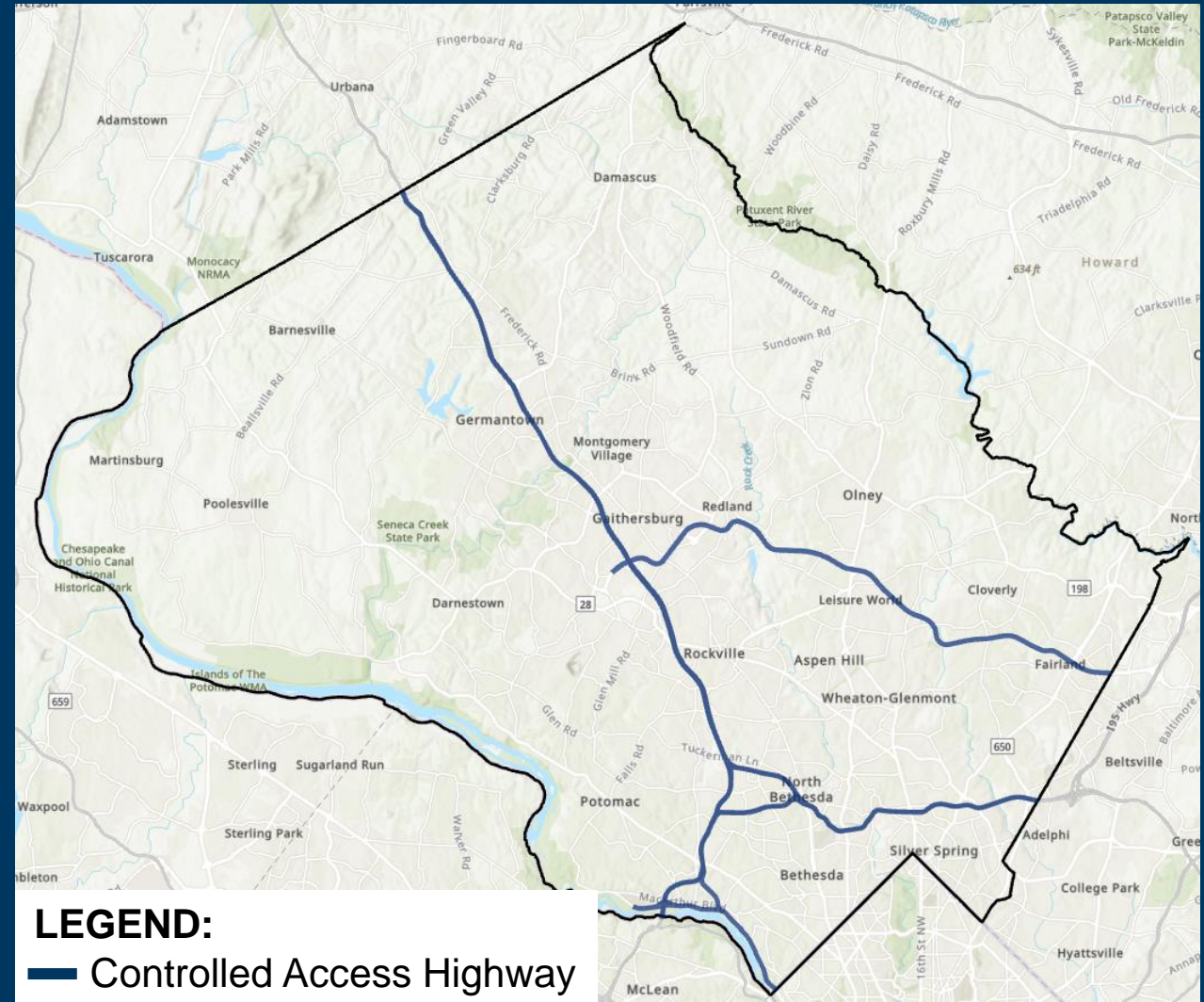
The County Government does not receive data from the following state and federal agencies:

- Maryland State Police (MSP)
- Maryland Transit Authority Police (MTAPD)
- National Park Service Police (NPS PD)

Therefore, the following roadways are excluded from County Government reporting.

- Interstates (I-270, I-370, I-495)
- Intercounty Connector (MD-200)
- National Park Service roads (Clara Barton Parkway and minor access roads)

For final reports covering all roadways, see reporting from the Maryland Department of Transportation – Highway Safety Office at:  
<https://zerodeathsmd.gov/resources/crashdata/>





# Preliminary 2021 Crash Totals

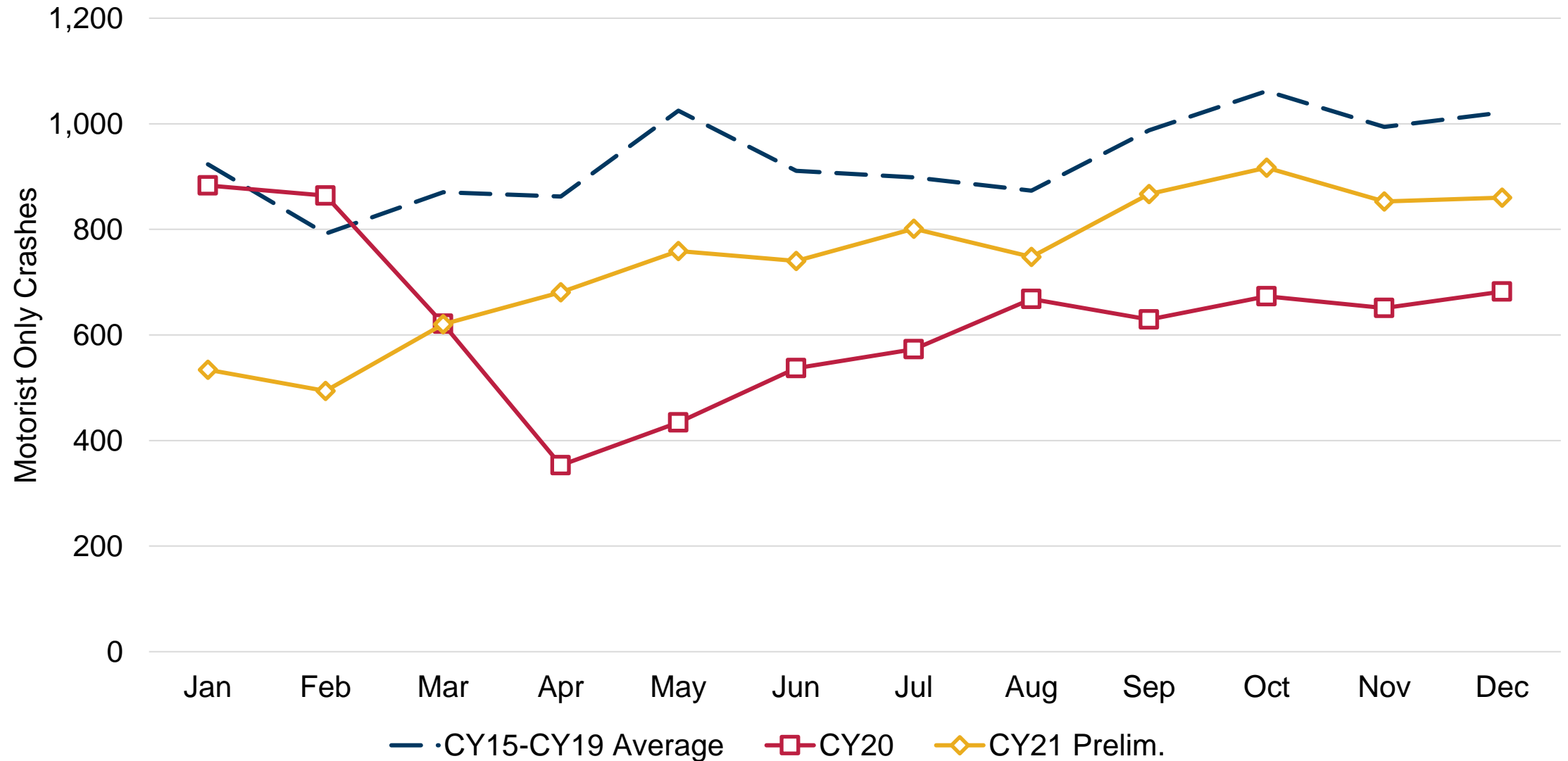
<u>ALL CRASHES</u>	2021 Prelim.	2020	% Change from 2020	2016 – 2019 Avg.	% Change from 2016-2019 Avg.
Cyclists	121	144	-16%	133	-9%
Drivers / Passengers	8,874	7,568	+17%	11,315	-22%
Pedestrians	332	356	-7%	485	-32%
<b>TOTAL</b>	<b>9,327</b>	<b>8,068</b>	<b>+16%</b>	<b>11,933</b>	<b>-22%</b>

<u>FATAL CRASHES</u>	2021 Prelim.	2020	% Change from 2020	2016 – 2019 Avg.	% Change from 2016-2019 Avg.
Cyclists	0	1	-100%	2	-100%
Drivers / Passengers	25	22	+14%	16	+57%
Pedestrians	7	16	-56%	12	-42%
<b>TOTAL</b>	<b>32</b>	<b>39</b>	<b>-18%</b>	<b>30</b>	<b>+7%</b>

NOTES:

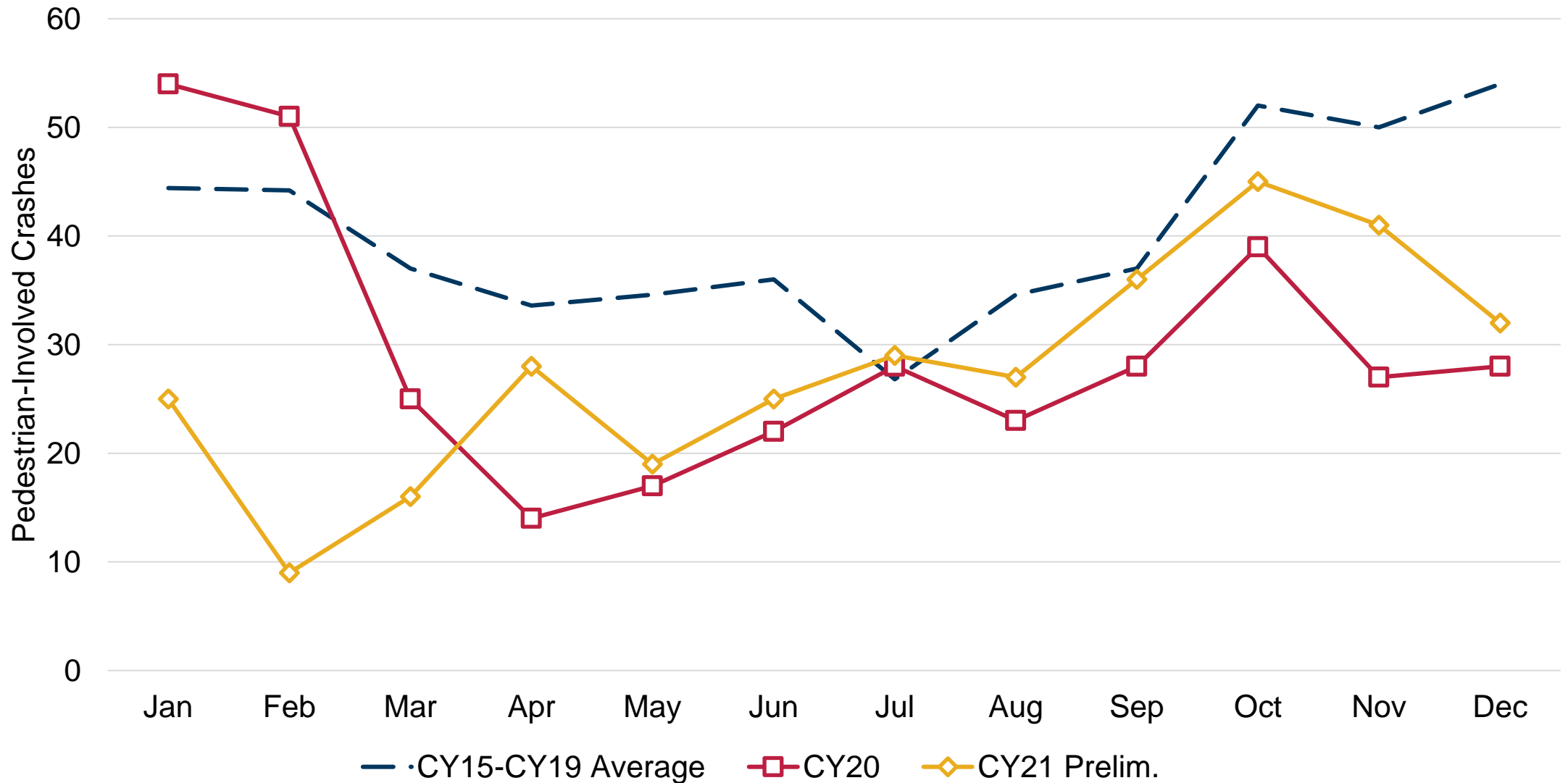
- **Red Text** = The number is preliminary and subject to change. 2021 cases are still being closed out. Data as of 2/16/22.
- Includes reports from MCPD, RCPD, GCPD, M-NCPPC Police, and TPPD.

# Motorist Only Collisions by Month

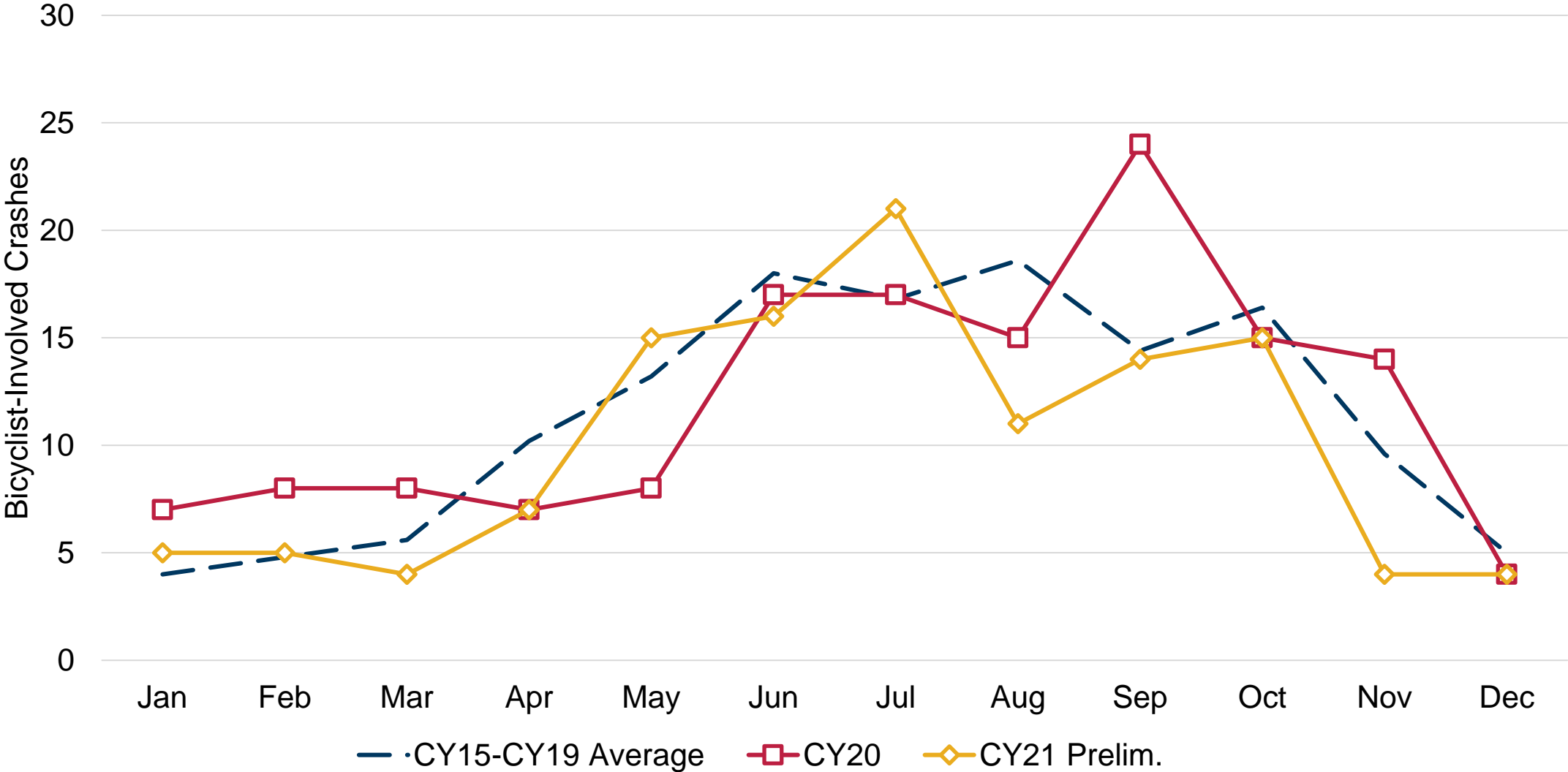




# Pedestrian Collisions by Month



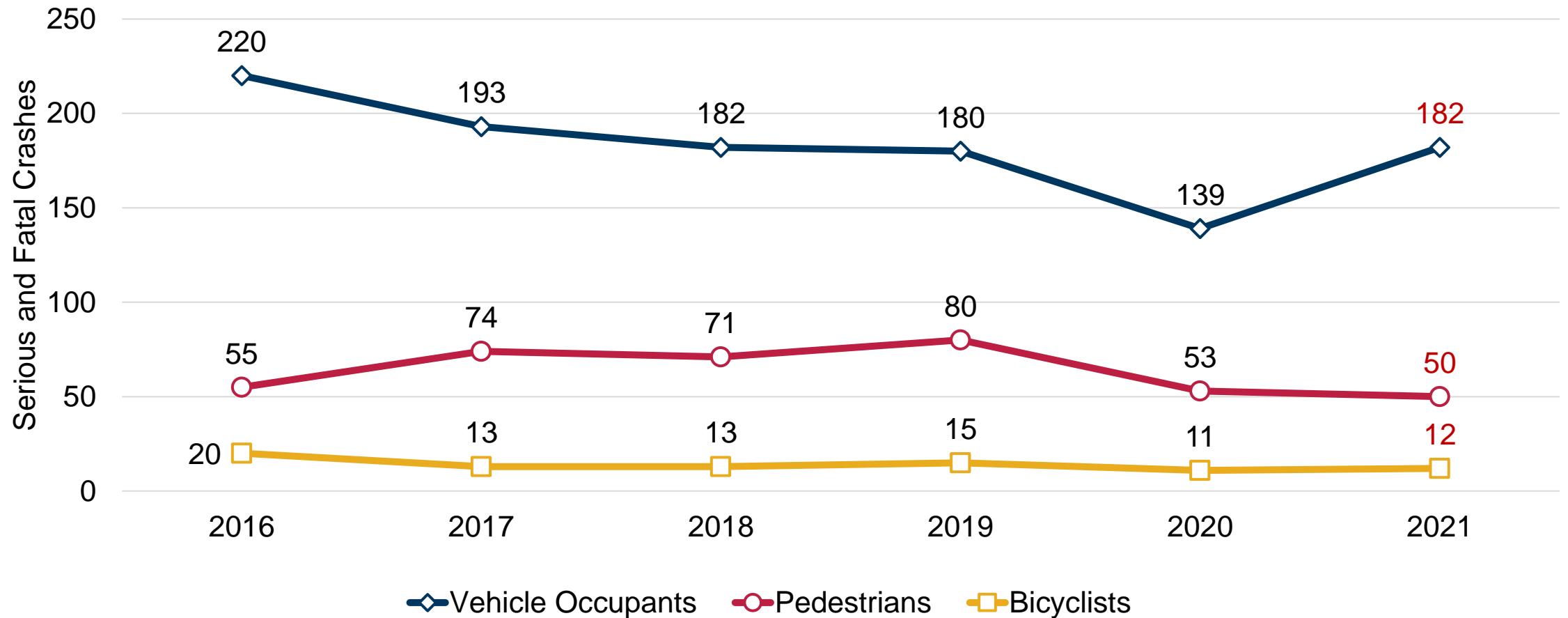
# Bicyclist Collisions by Month





# Serious and Fatal Crashes

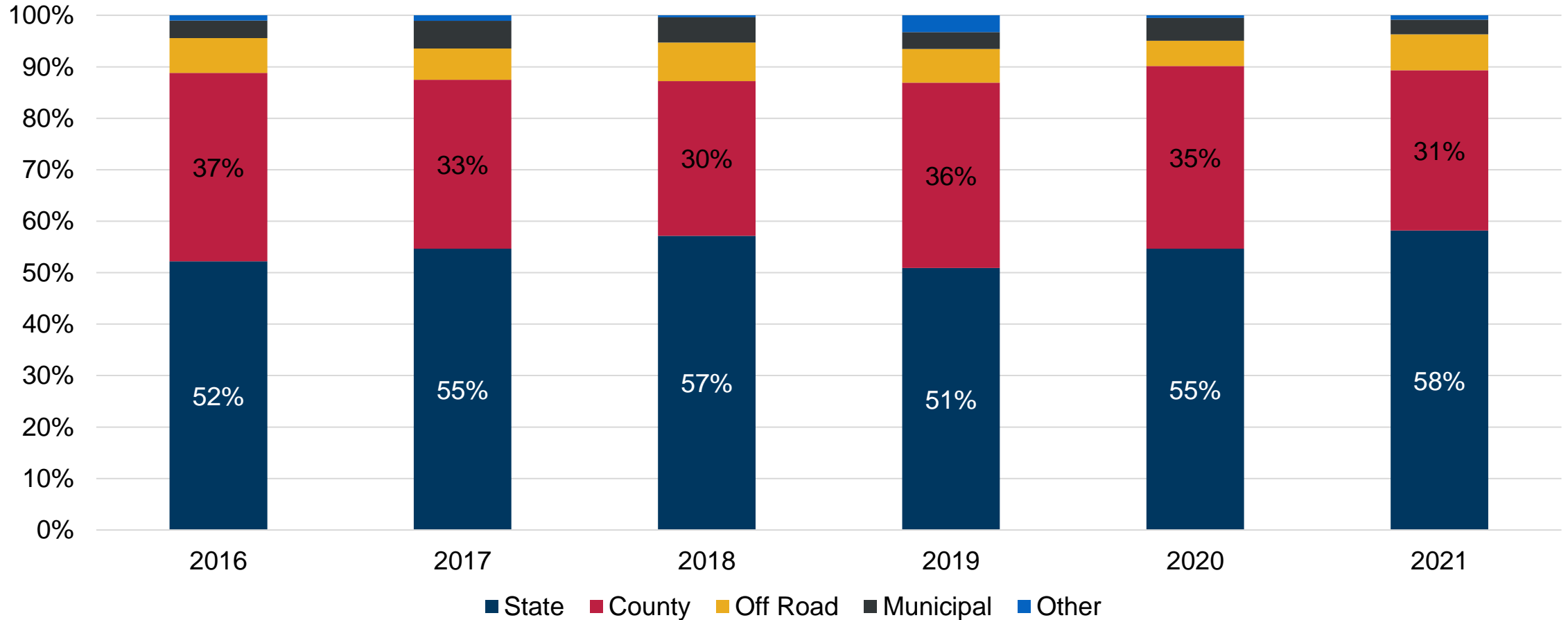
Comparing January 1 – December 31 for each year



Source: MCPD. Includes MCPD, RPD, TPPD, GPD, and M-NCPPC MC reports. Data retrieved 02/15/22. Includes crashes where at least one party suffered serious or fatal injuries. **2021 data are preliminary.**

# Serious and Fatal Crashes

## Crashes by Roadway Owner

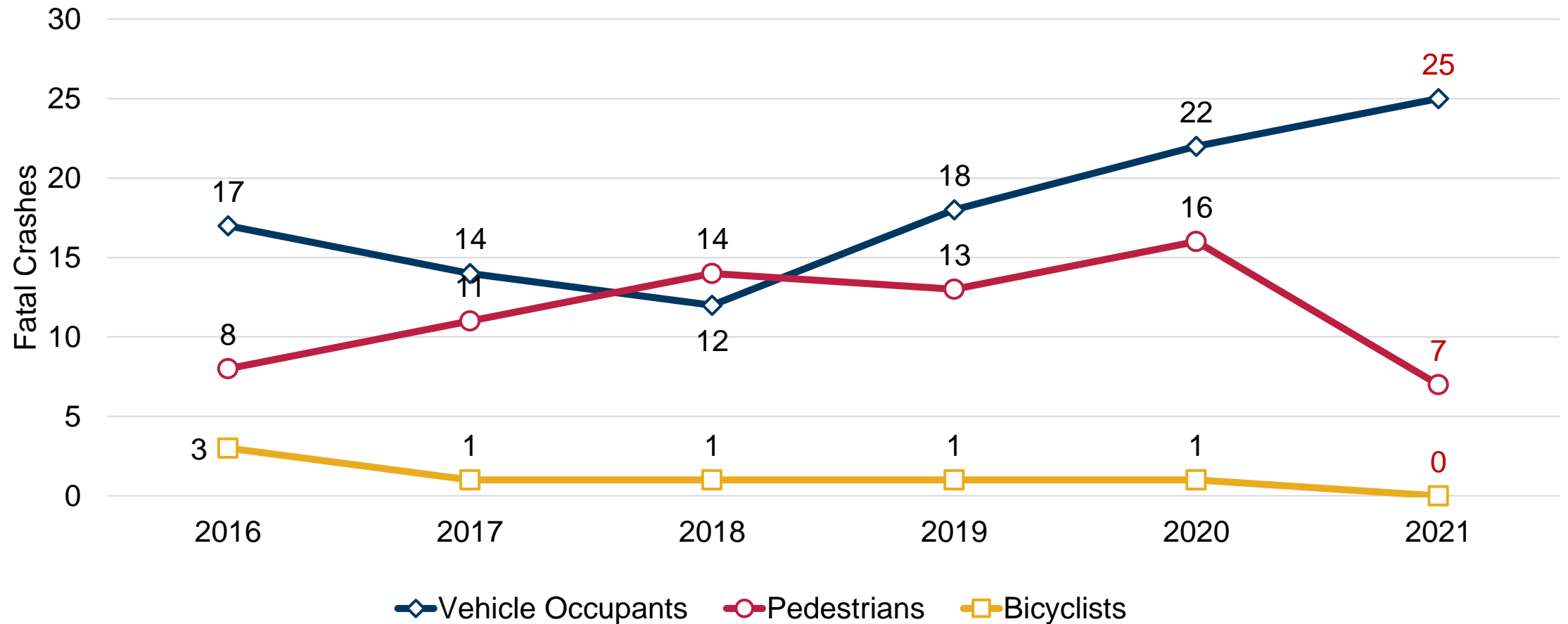


Source: MCPD. Includes MCPD, RPD, TPPD, GPD, and M-NCPPC MC reports. Data retrieved 02/15/22. Includes crashes where at least one party suffered serious or fatal injuries. **2021 data are preliminary.**



# Fatal Crashes

Comparing January 1 – December 31 for each year

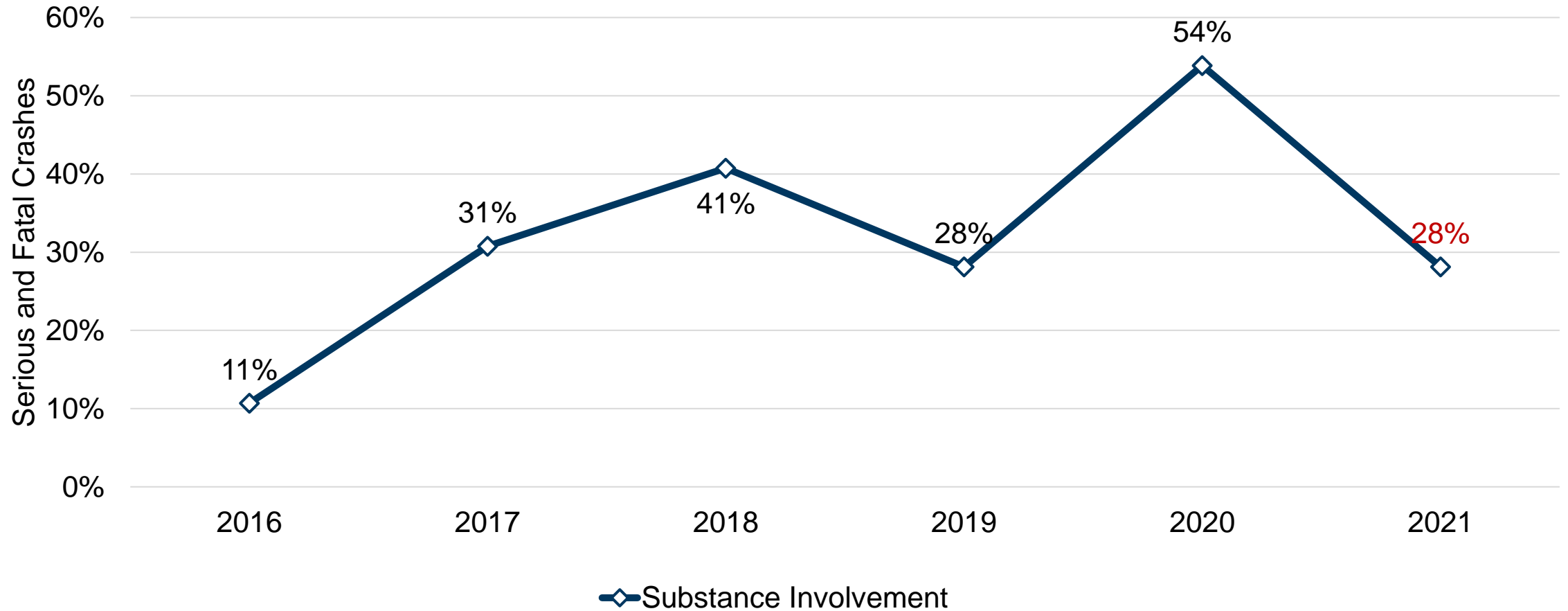


Source: MCPD CRU. Data retrieved 02/15/22.

Includes crashes where at least one party suffered fatal injuries. 2021 data are preliminary.

# Impaired Fatal Crashes

Percentage of fatal crashes with alcohol or drug use



Source: MCPD CRU. Data retrieved 02/15/22.

Includes crashes where at least one party suffered fatal injuries. 2021 data are preliminary and MCPD is awaiting toxicology reports.



# Fatal Crashes

## By Location and Roadway User

### Legend

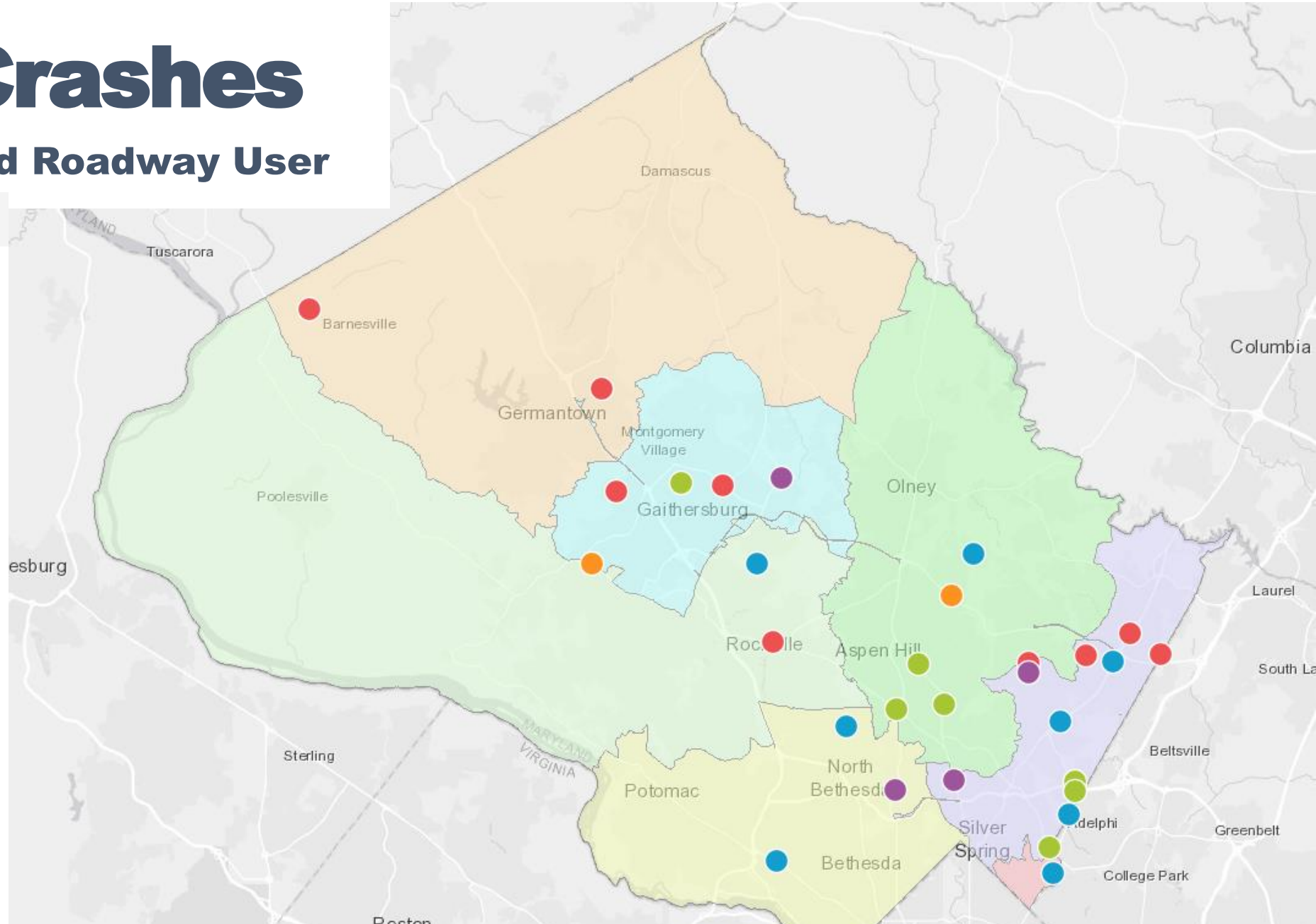
#### CRU\_Fatals

- Driver
- Motorcycle
- Pedestrian
- Passenger
- Driver and passenger

#### police\_district

##### Police District

- 0
- 1
- 2
- 3
- 4
- 5
- 6
- 8



Source: MCPD CRU. Data retrieved 01/24/22.

Includes crashes where at least one party suffered fatal injuries. 2021 data are preliminary.