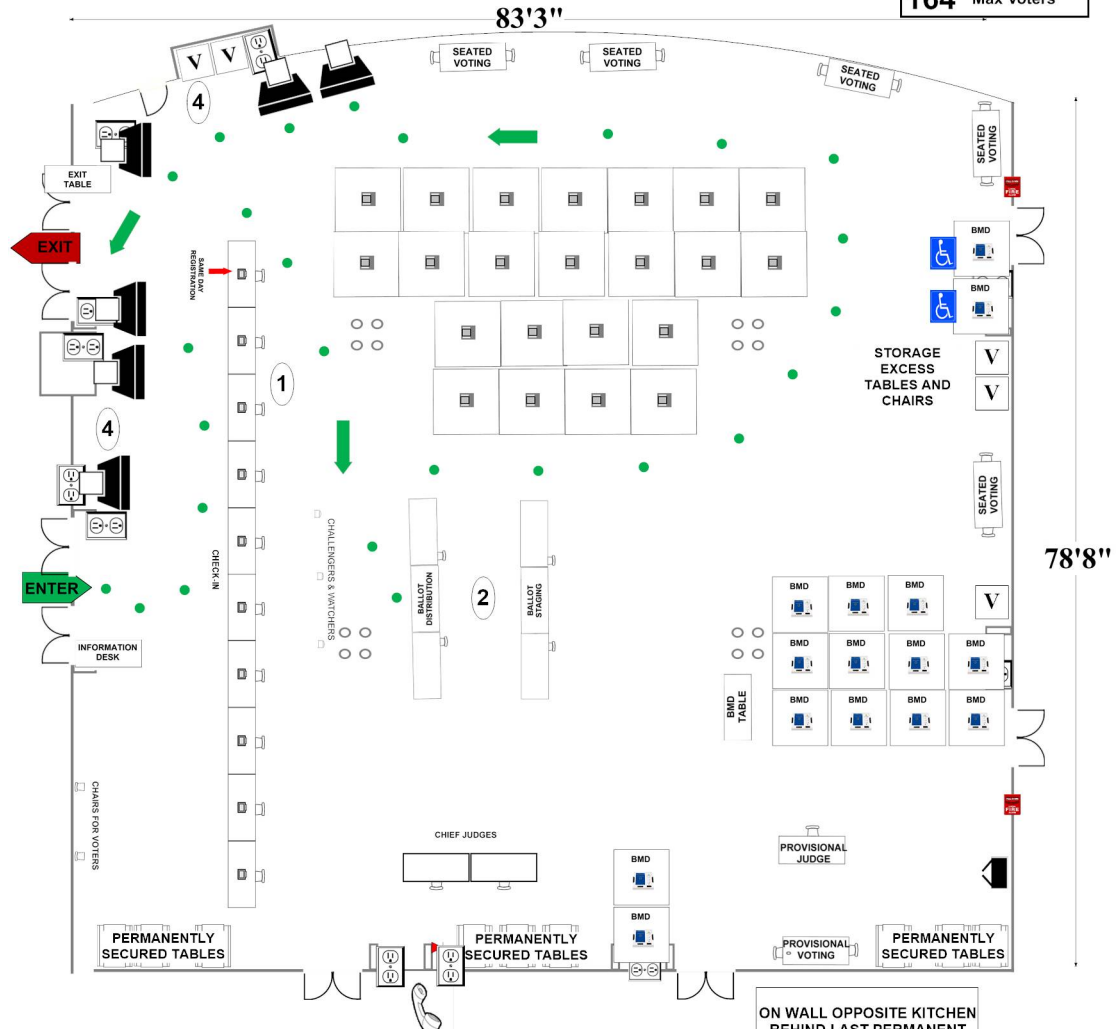


Albert Einstein High School
 11135 Newport Mill Rd
 Kensington, MD 20895
RECOMMENDED ROOM LAYOUT

CAFETERIA

- 25** Voting Booths
- 10** Seated Voting
- 10** Poll Books
- 15** BMDs
- 6** Scanners
- 164** Max Voters



- 6'X2 1/2' Table
- Voting Booth
- Transfer Cart
- Window
- Ballot Marking Device
- Electronic Poll Book
- Scanner
- Column
- Voter Travel
- 2 plug outlet
- Accessible Voting booth/ Ballot Marking Device
- Fire alarm

ON WALL OPPOSITE KITCHEN
 BEHIND LAST PERMANENT
 SEAT AND TABLE.
 GREEN DOT.

Montgomery County
 Board of Elections
 10/23/2020

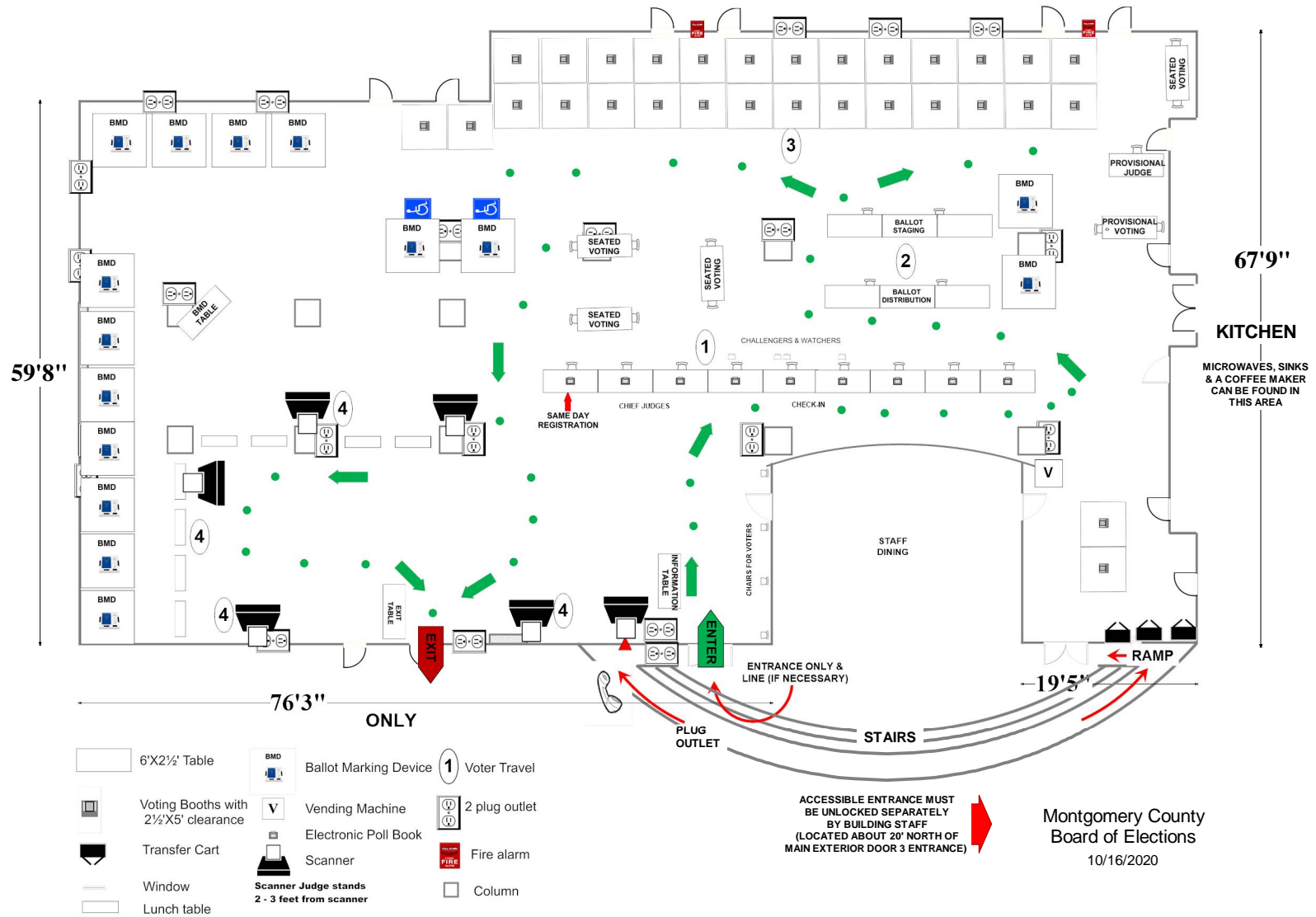
Bethesda-Chevy Chase High School

4301 East-West Hwy
Bethesda, MD 20814

RECOMMENDED ROOM LAYOUT

CAFETERIA

30	Voting Booths
10	Seated Voting
9	Poll Books
15	BMDs
6	Scanners
101	Max Voters



Bethesda-Chevy Chase High School

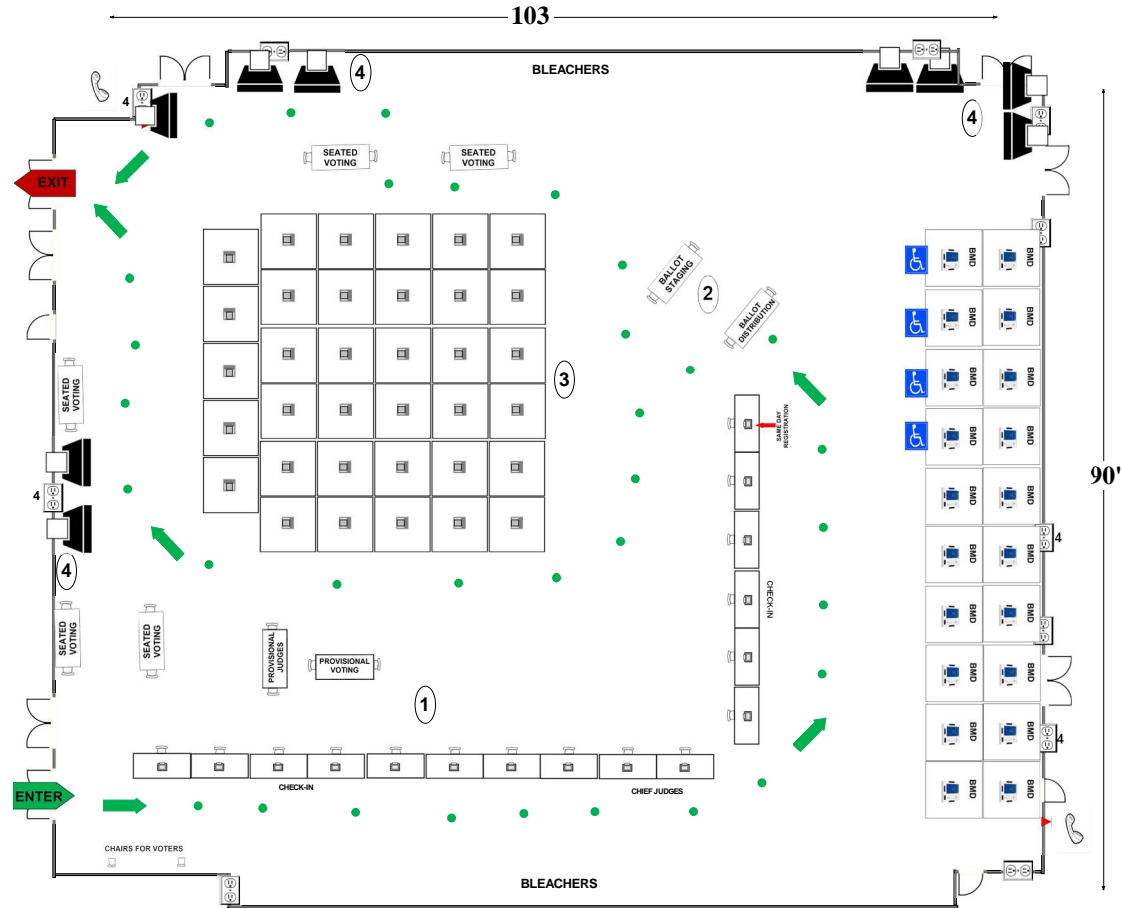
4301 East-West Hwy

Bethesda, MD 20814

RECOMMENDED ROOM LAYOUT

GYM

- 35** Voting Booths
- 10** Seated Voting
- 16** Poll Books
- 20** BMDs
- 8** Scanners
- 225** Max Voters



- 6'X2 1/2' Table
- Voting Booth
- Transfer Cart
- Window
- Ballot Marking Device
- Electronic Poll Book
- Scanner
- Column
- 1 • Voter Travel
- 2 plug outlet
- Accessible Voting booth/ Ballot Marking Device
- Fire alarm

Montgomery County
Board of Elections

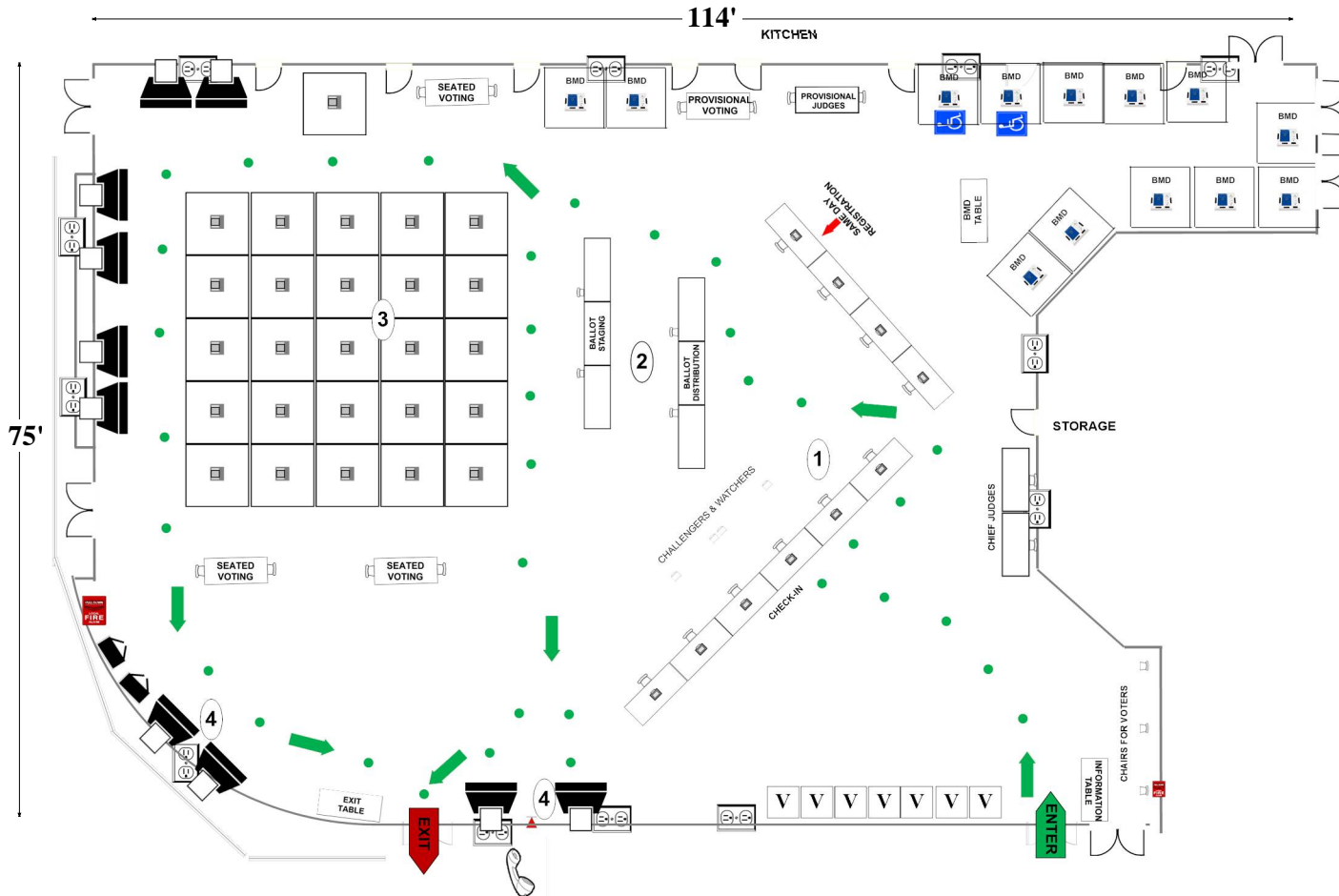
10/9/2020

Clarksburg High School
 22500 Wims Rd
 Clarksburg, MD 20871

CAFETERIA

25	Voting Booths
10	Seated Voting
10	Poll Books
15	BMD
10	Scanners
206	Max Voters

RECOMMENDED ROOM LAYOUT



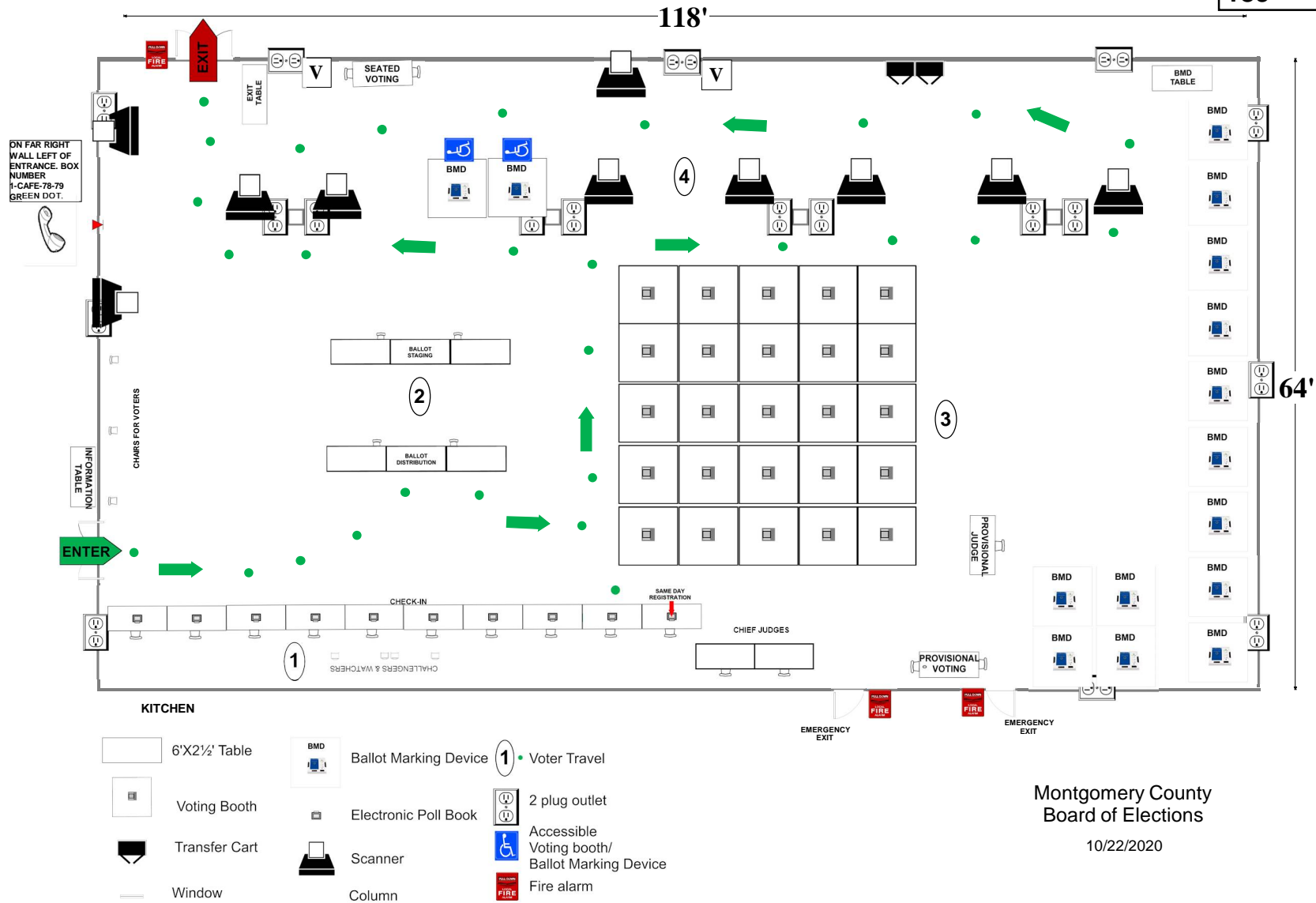
- | | | | | | |
|--|--|--|---|--|----------------|
| | 6'X2 1/2' Table | | Ballot Marking Device | | 1 Voter Travel |
| | Voting Booths with 2 1/2'X5' clearance | | Vending Machine | | 2 plug outlet |
| | Transfer Cart | | Electronic Poll Book | | Fire alarm |
| | Window | | Scanner | | Column |
| | Bookcase | | Scanner Judge stands
2 - 3 feet from scanner | | |

Col. Zadok Magruder High School
 5939 Muncaster Mill Rd.
 Rockville, MD 20855

CAFETERIA

RECOMMENDED ROOM LAYOUT

25	Voting Booths
10	Seated Voting
10	Poll Books
15	BMDs
10	Scanners
189	Max Voters



Montgomery County
 Board of Elections

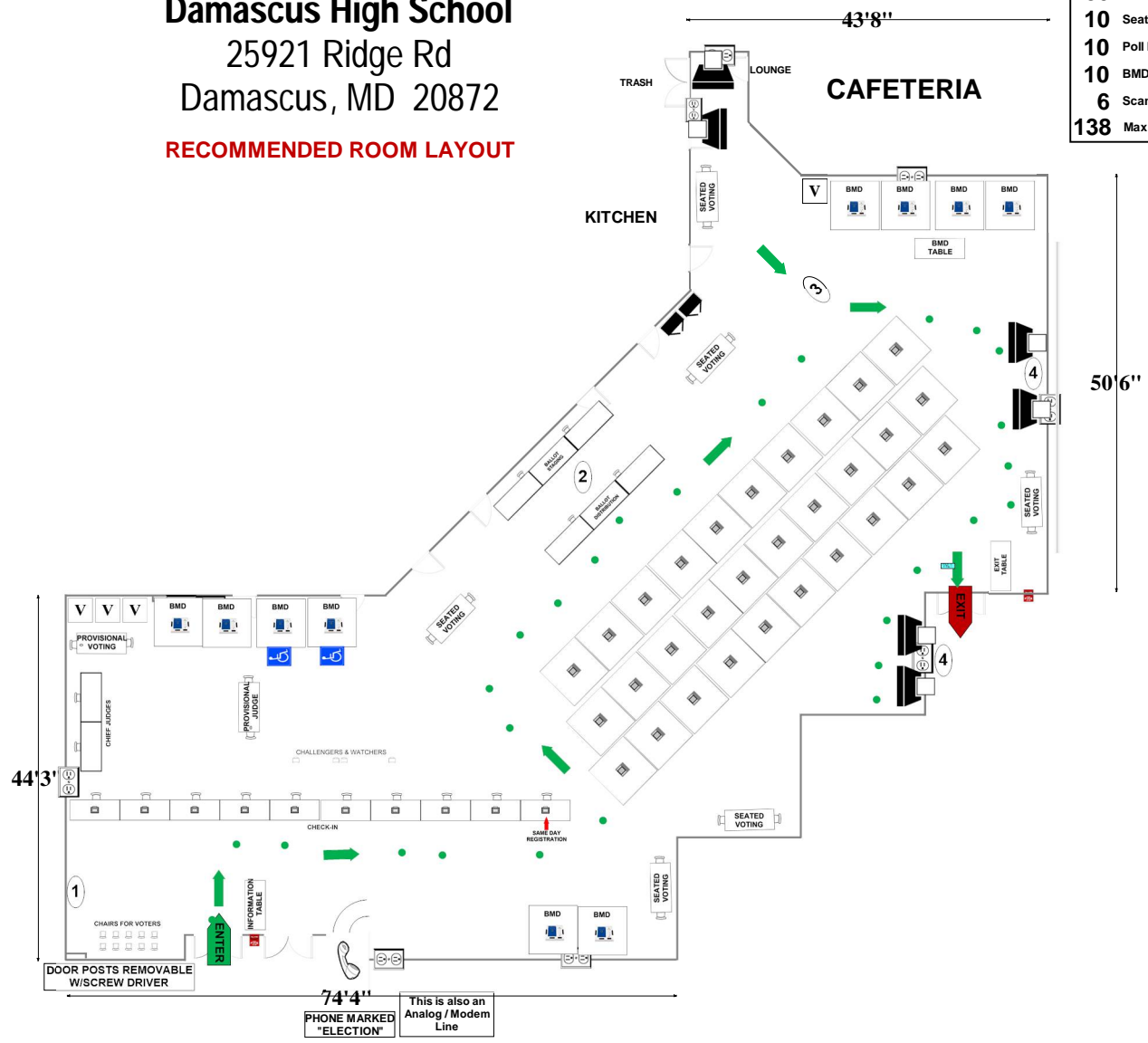
10/22/2020

Damascus High School

25921 Ridge Rd
Damascus, MD 20872

RECOMMENDED ROOM LAYOUT

- 30** Voting Booths
- 10** Seated Voting
- 10** Poll Books
- 10** BMDs
- 6** Scanners
- 138** Max Voters



- 6'X2½' Table
- Voting Booths with 2½'X5' clearance
- Transfer Cart
- Window
- Ballot Marking Device
- Vending Machine
- Scanner
- Scanner Judge stands 2 - 3 feet from scanner
- Voter Travel
- 2 plug outlet
- Fire alarm

Montgomery County
Board of Elections
10/22/2020

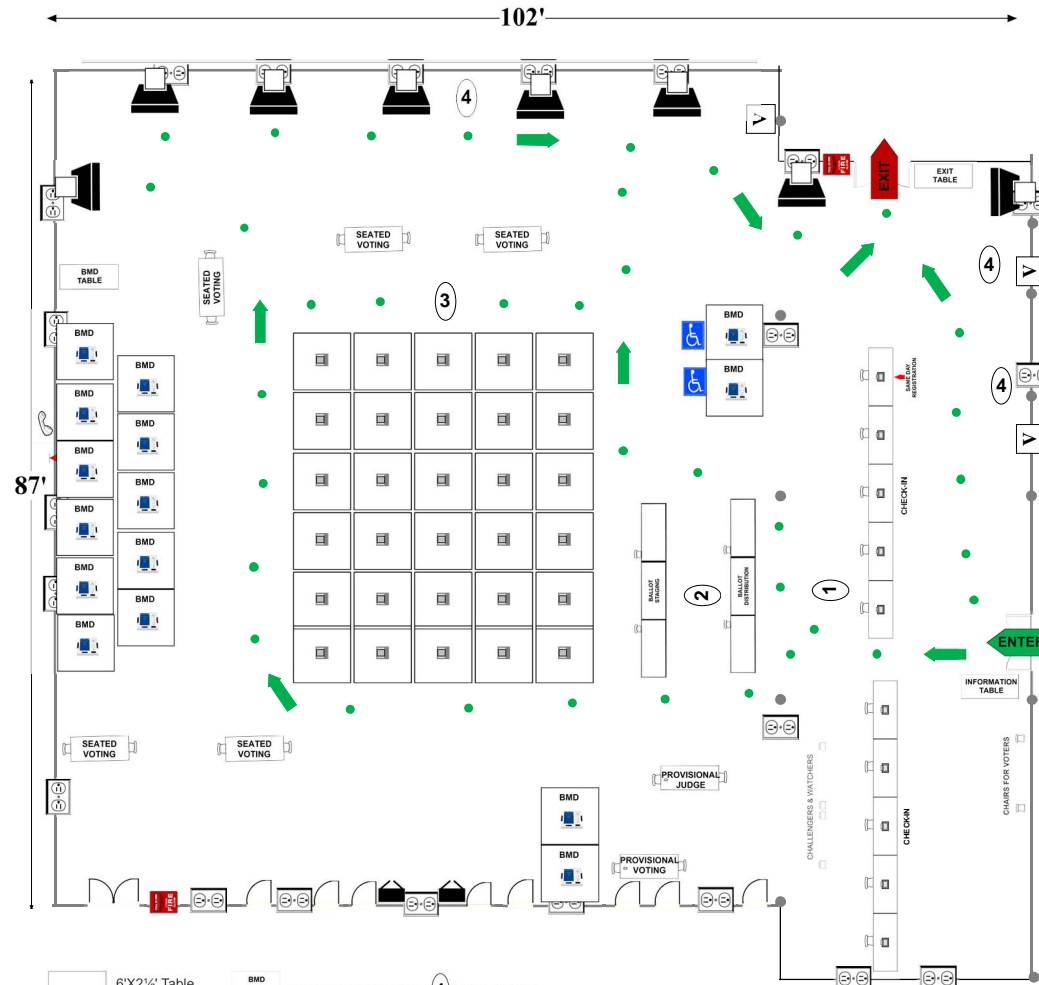
Gaithersburg High School

101 Education Blvd
Gaithersburg, MD 20877

CAFETERIA

RECOMMENDED ROOM LAYOUT

30	Voting Booths
10	Seated Voting
10	Poll Books
15	BMDs
8	Scanners
222	Max Voters



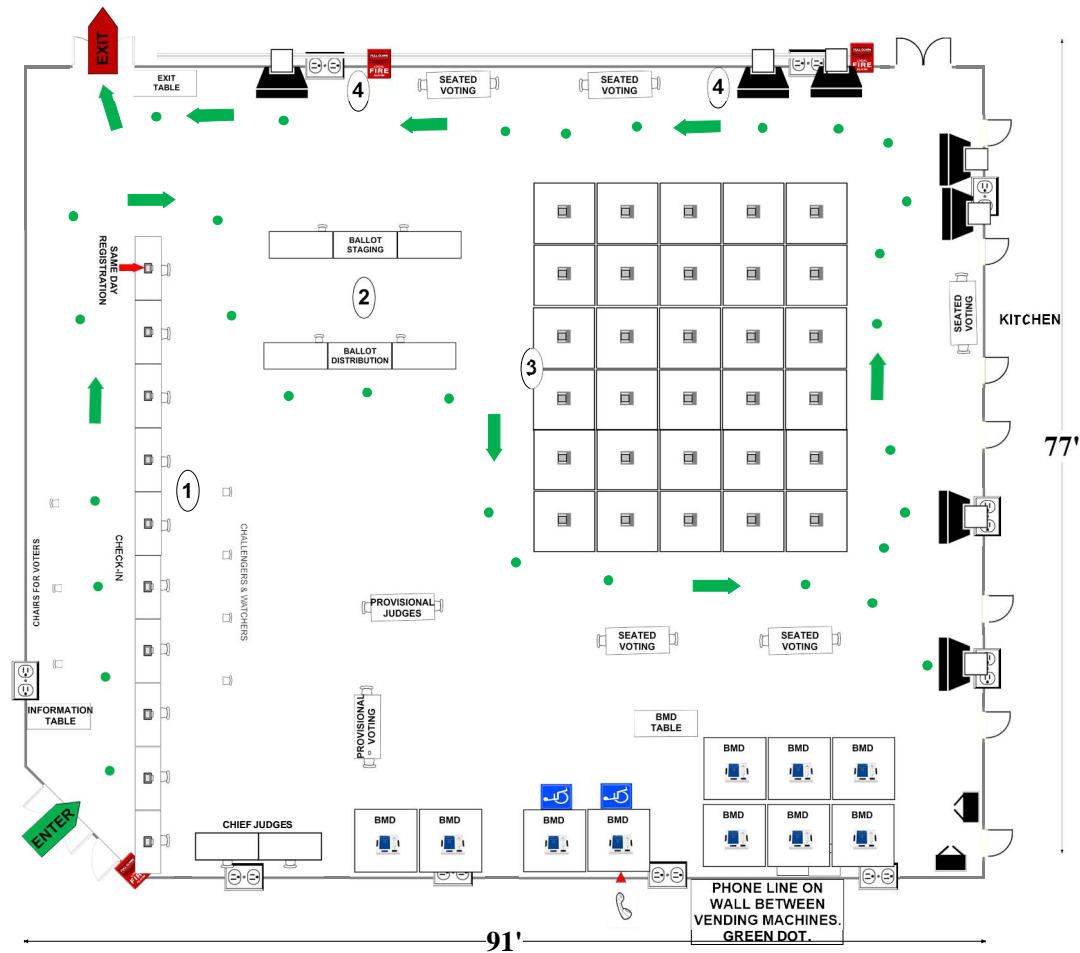
- 6'X2 1/2' Table
- Voting Booth
- Transfer Cart
- Window
- Ballot Marking Device
- Electronic Poll Book
- Scanner
- Column
- 1 - Voter Travel
- 2 plug outlet
- Accessible Voting booth/
Ballot Marking Device
- Fire alarm

Montgomery County
Board of Elections
10/22/2020

James Hubert Blake High School
 300 Norwood Rd
 Silver Spring, MD 20905
RECOMMENDED ROOM LAYOUT

CAFETERIA

30	Voting Booths
10	Seated Voting
10	Poll Books
10	BMDs
7	Scanners
175	Max voters



- 6'x2 1/2' Table
- Voting Booth
- Transfer Cart
- Window
- Ballot Marking Device
- Electronic Poll Book
- Scanner
- Column
- Voter Travel
- 2 plug outlet
- Accessible Voting booth/ Ballot Marking Device
- Fire alarm

Montgomery County
 Board of Elections

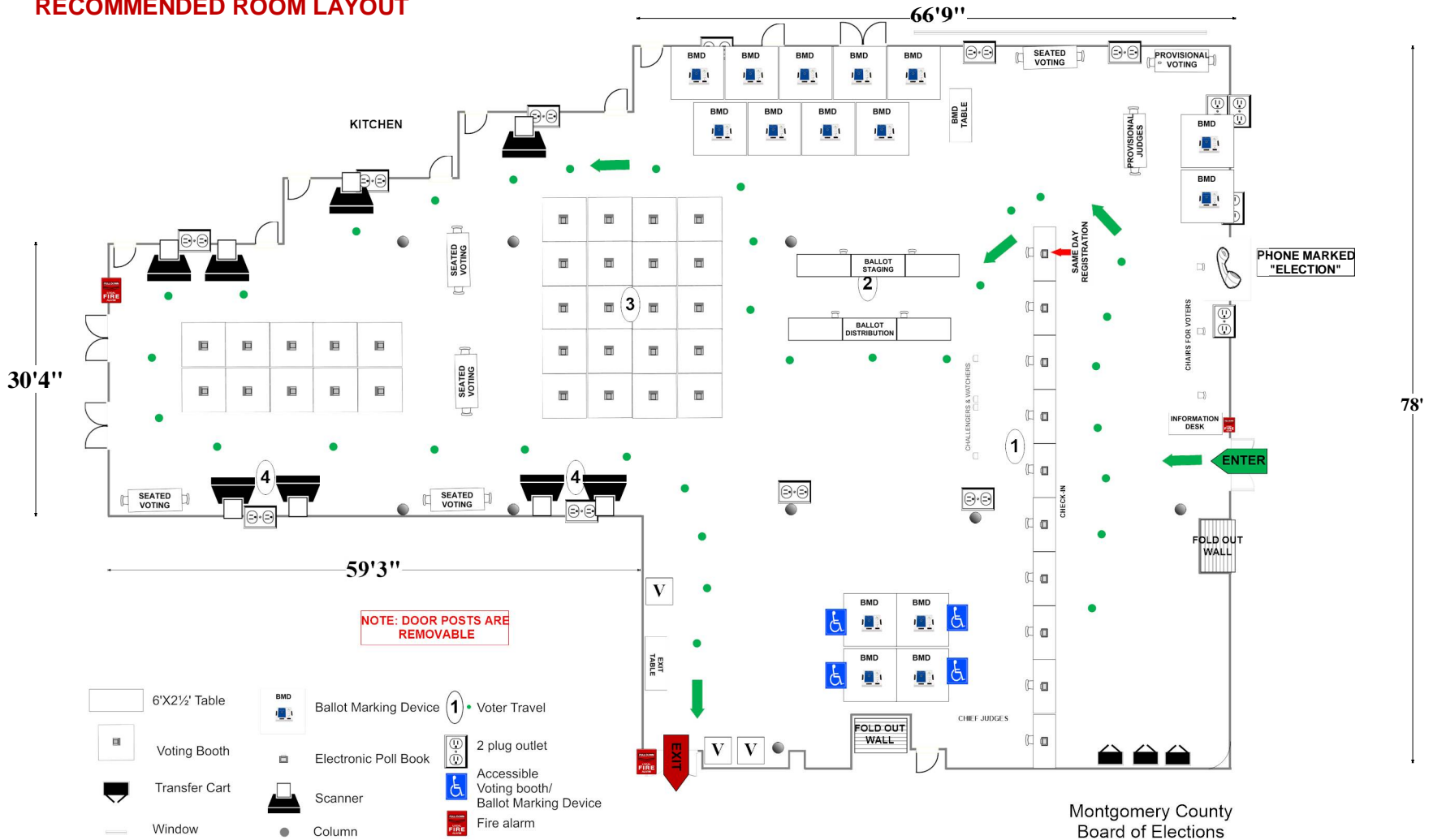
10/22/2020

John F. Kennedy High School
 1901 Randolph Road
 Silver Spring, MD 20902

CAFETERIA

RECOMMENDED ROOM LAYOUT

- 30** Voting Booths
- 10** Seated Voting
- 10** Poll Books
- 15** BMDs
- 8** Scanners
- 180** Max Voters



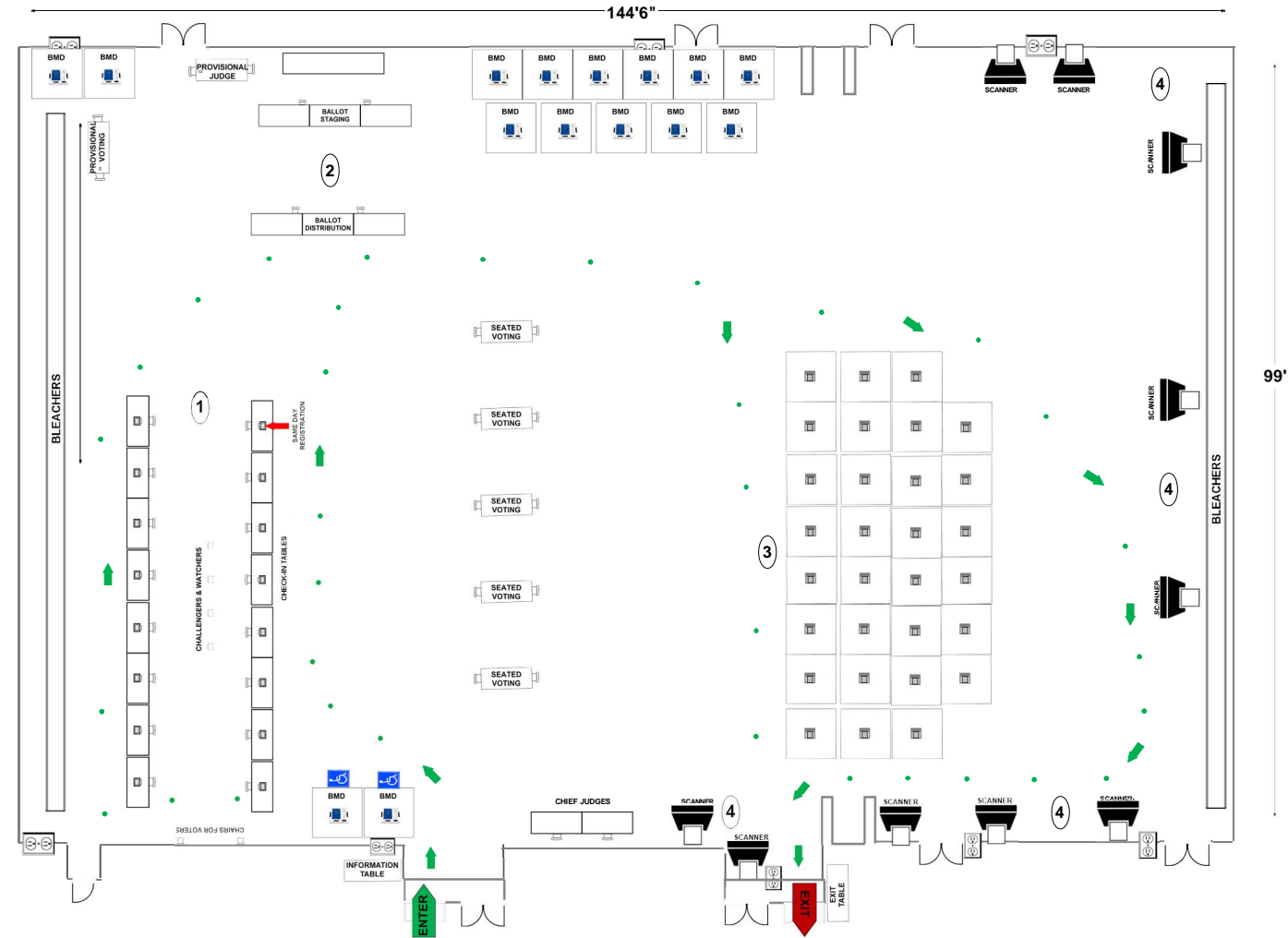
Montgomery County Board of Elections

Montgomery Blair High School
51 University Blvd E
Silver Spring, MD 20901

RECOMMENDED ROOM LAYOUT

GYM

30	Voting Booths
10	Seated Voting
17	Poll Books
20	BMDs
10	Scanners
235	Max Voters



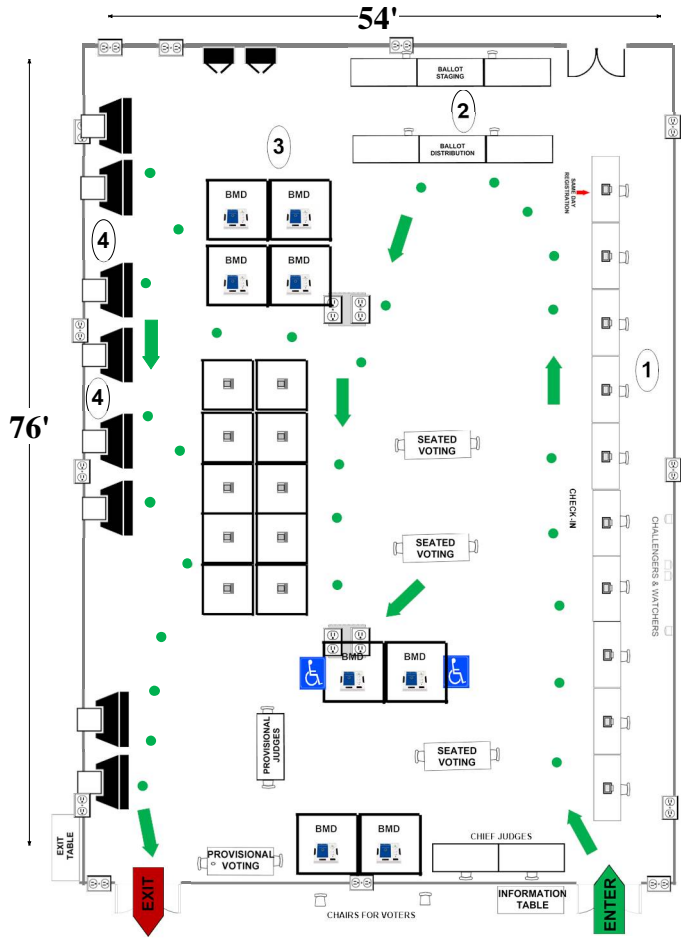
- 6'x2 1/2' Table
- Voting station
- Transfer Cart
- Window
- Ballot Marking Device
- Vending Machine
- Electronic Poll Book
- Scanner
- Scanner Judge stands
2 - 3 feet from scanner
- Voter Travel
- 2 plug outlet
- Fire alarm

Montgomery County
Board of Elections
10/21/2020

Montgomery County
 Conference Center
 5967 Executive Blvd
 N. Bethesda, MD 20852

RECOMMENDED ROOM LAYOUT Use Cell Phone

- 10** Voting Booths
- 6** Seated Voting
- 10** Poll Books
- 8** BMDs
- 8** Scanners
- 103** Max Voters



- 6'X2 1/2' Table
- Voting Booth
- Transfer Cart
- Window
- Ballot Marking Device
- Electronic Poll Book
- Scanner
- Scanner Judge stands**
2 - 3 feet from scanner
- Voter Travel
- 2 plug outlet
- Accessible Voting booth/
Ballot Marking Device
- Fire alarm

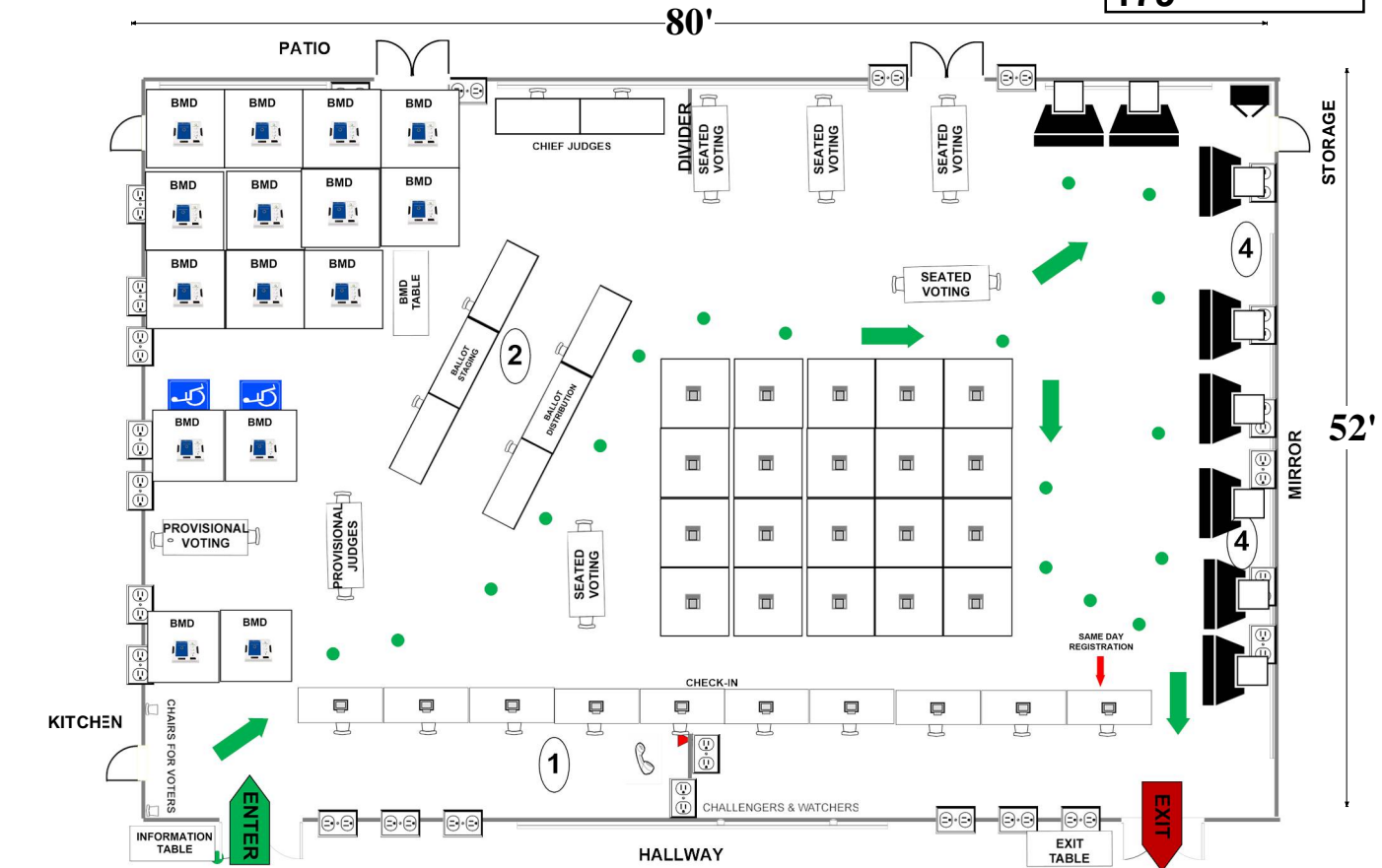
Montgomery County
 Board of Elections
 10/27/2020

**Nancy H. Dacek N. Potomac
Community Recreation Center**
13850 Travilah Rd
Rockville, MD 20850

RECOMMENDED ROOM LAYOUT

USE CELL PHONE

20	Voting Booths
10	Seated Voting
10	Poll Books
15	BMDs
8	Scanners
179	Max Voters



- 6'x2 1/2' Table
- Voting Booth
- Transfer Cart
- Window
- Ballot Marking Device
- Electronic Poll Book
- Scanner
- Voter Travel
- 2 plug outlet
- Accessible Voting booth/
Ballot Marking Device
- Fire alarm

Montgomery County
Board of Elections
10/27/2020

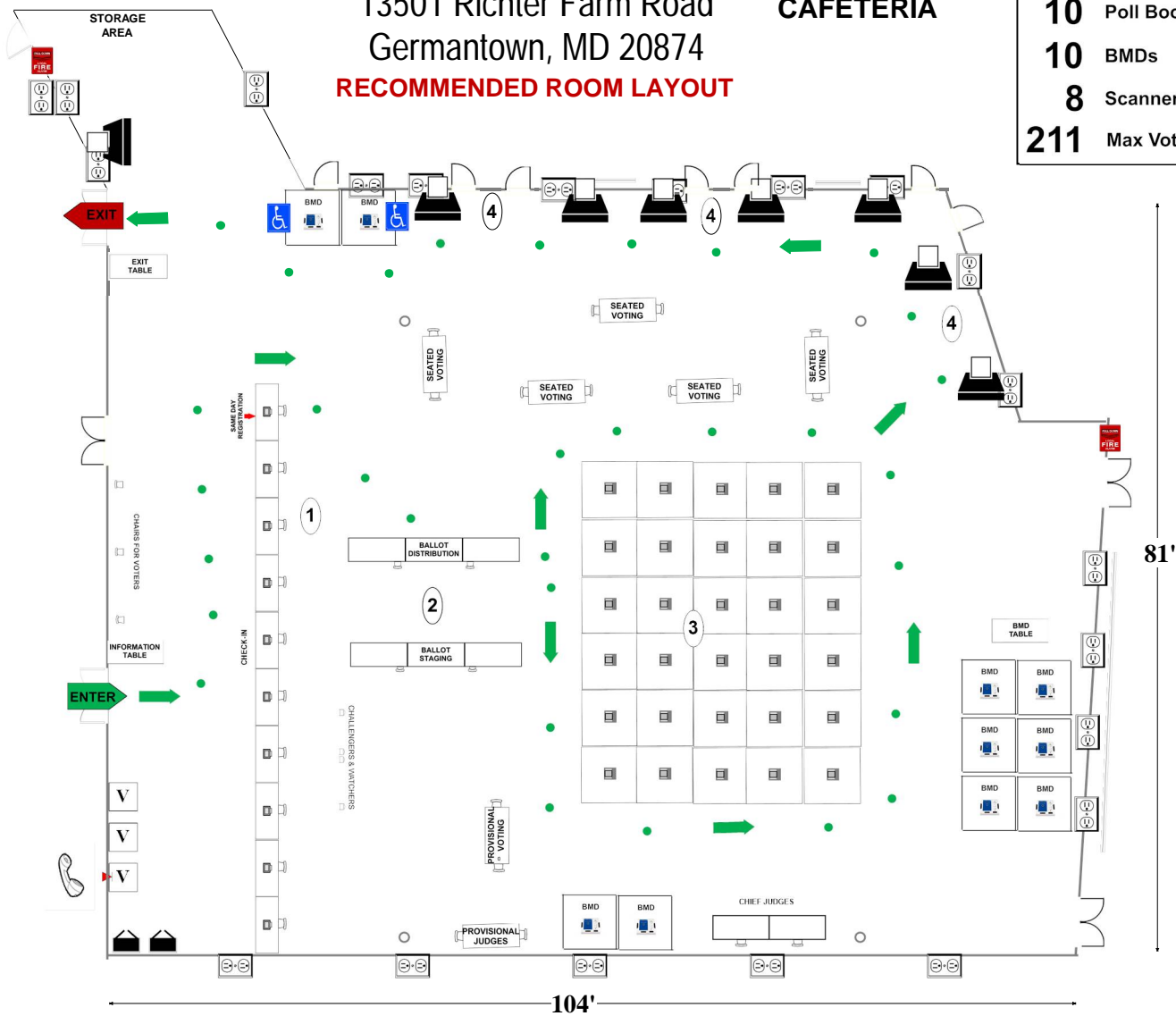
Northwest High School

13501 Richter Farm Road
Germantown, MD 20874

CAFETERIA

RECOMMENDED ROOM LAYOUT

- 30** Voting Booths
- 10** Seated Voting
- 10** Poll Books
- 10** BMDs
- 8** Scanners
- 211** Max Voters



- 6'X2½' Table
- Voting Booth
- Transfer Cart
- Window
- Ballot Marking Device
- Electronic Poll Book
- Scanner
- Column
- 1 - Voter Travel
- 2 plug outlet
- Accessible Voting booth/ Ballot Marking Device
- Fire alarm

Montgomery County
Board of Elections
10/19/2020

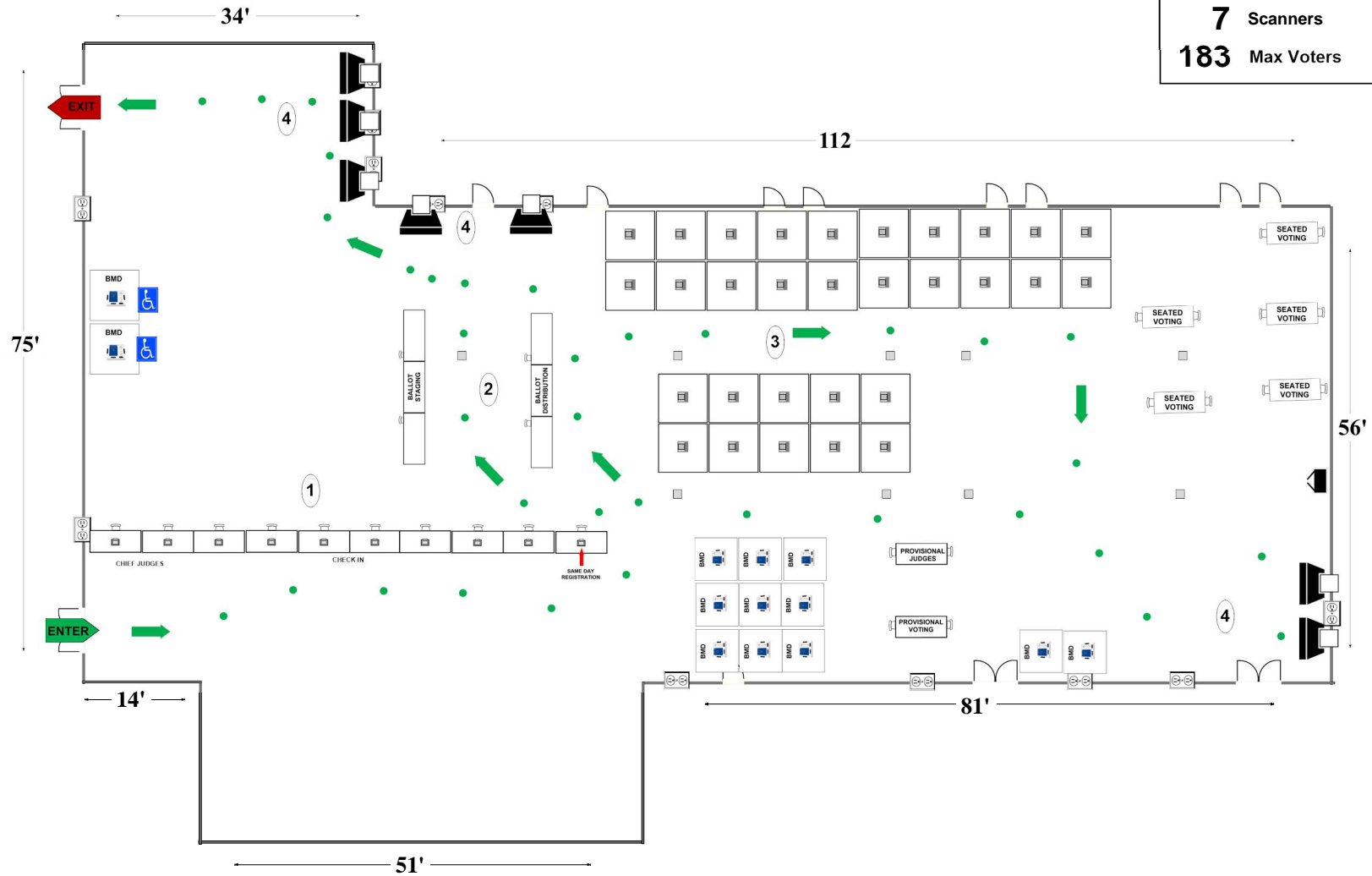
Northwood High School

919 University Blvd W
Silver Spring, MD 20901

RECOMMENDED ROOM LAYOUT

CAFETERIA

- 30** Voting Booths
- 10** Seated Voting
- 10** Poll Books
- 15** BMDs
- 7** Scanners
- 183** Max Voters



- | | | | | | |
|--|-----------------|--|-----------------------|--|---|
| | 6'x2 1/2' Table | | Ballot Marking Device | | Voter Travel |
| | Voting Booth | | Electronic Poll Book | | 2 plug outlet |
| | Transfer Cart | | Scanner | | Accessible Voting booth/
Ballot Marking Device |
| | Window | | Column | | Fire alarm |

Montgomery County
Board of Elections

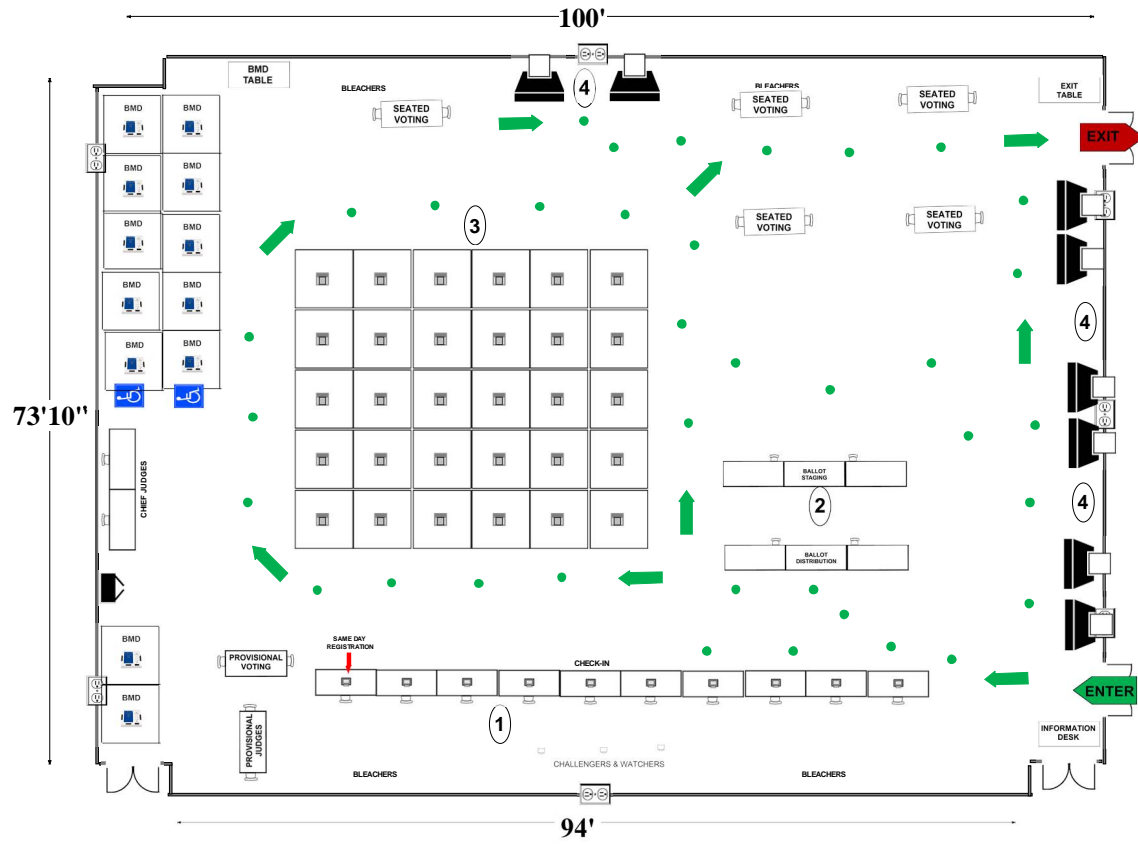
10/22/2020

Poolesville High School
 17501 West Willard Road
 Poolesville, MD 20837

GYM

RECOMMENDED ROOM LAYOUT

- 30** Voting Booths
- 10** Seated Voting
- 10** Poll Books
- 12** BMDs
- 8** Scanners
- 188** Max voters



- 6'X2 1/2' Table
- Voting Booth
- Transfer Cart
- Window
- Bookcase
- Ballot Marking Device
- Vending Machine
- Electronic Poll Book
- Scanner
- Scanner Judge stands**
2 - 3 feet from scanner
- Voter Travel
- 2 plug outlet

CHEF JUDGES

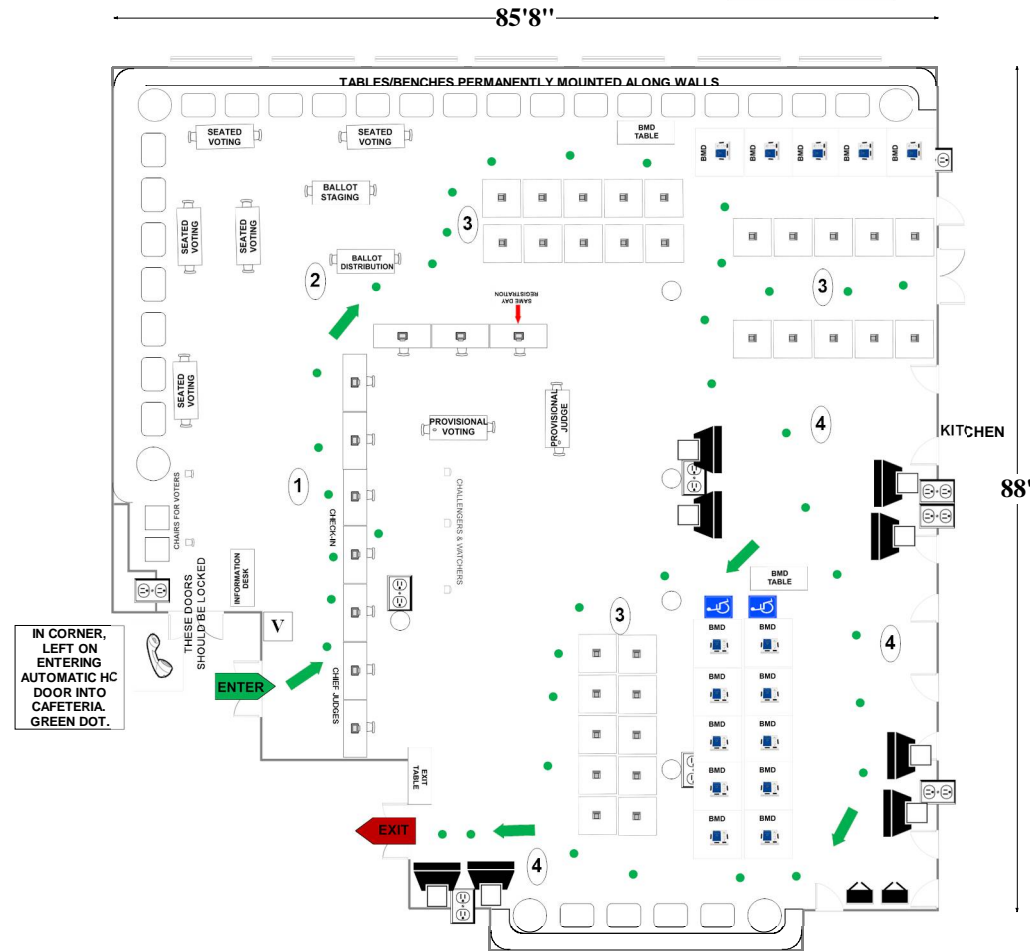
Montgomery County
 Board of Elections
 10/20/2020

Quince Orchard High School
 15800 Quince Orchard Rd.
 Gaithersburg, MD 20878

CAFETERIA

RECOMMENDED ROOM LAYOUT

- 30 Voting Booths
- 10 Seated Voting
- 10 Poll Books
- 15 BMDs
- 8 Scanners
- 189 Max Voters



- 6'x2 1/2' Table
- Voting Booths with 2 1/2'x5' clearance
- Transfer Cart
- Window
- Ballot Marking Device
- Vending Machine
- Scanner
- Scanner Judge stands 2 - 3 feet from scanner
- 1 Voter Travel
- 2 plug outlet
- Electronic Poll Book
- Fire alarm
- Column

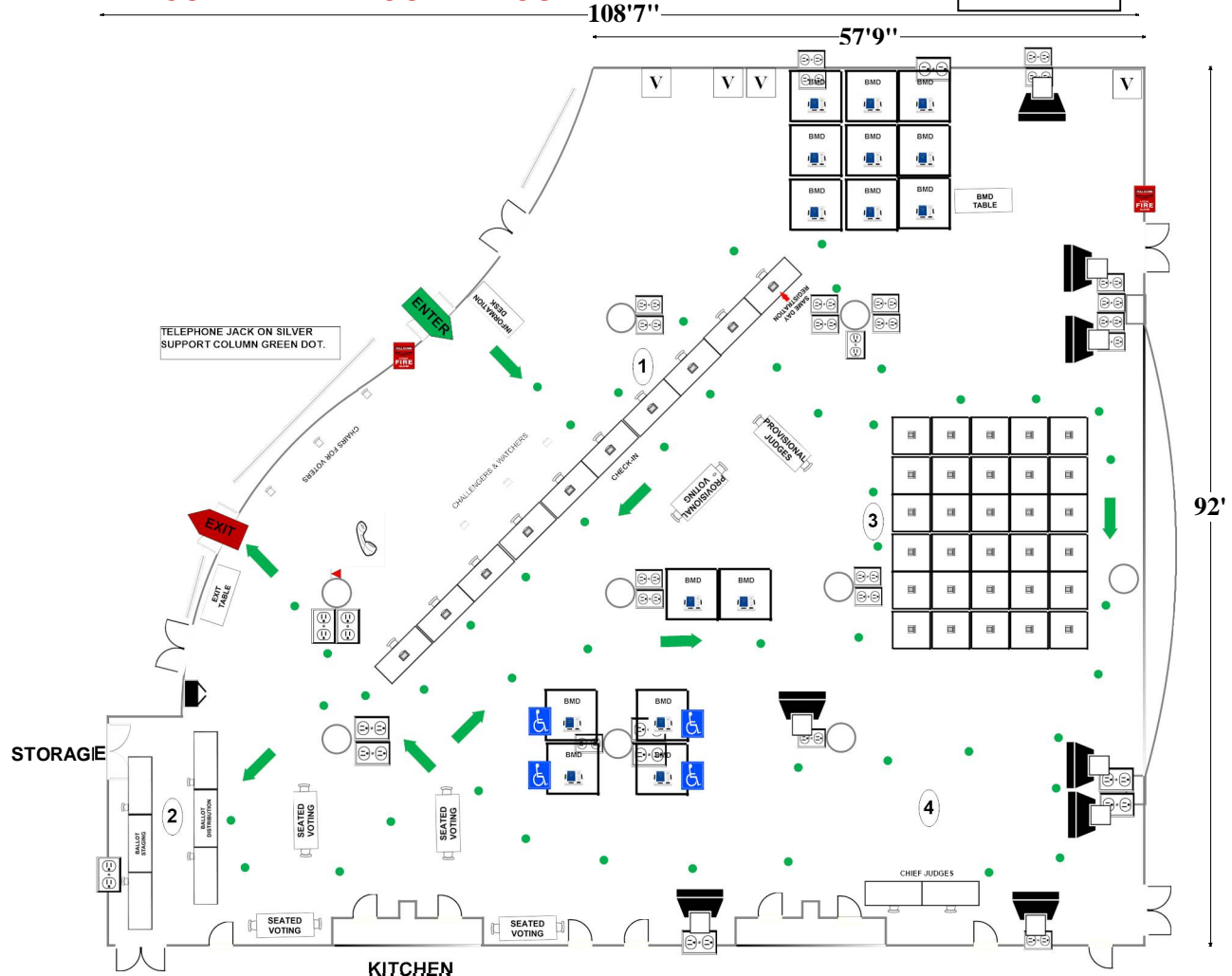
Montgomery County
 Board of Elections
 9/22/2020

Richard Montgomery High School
 250 Richard Montgomery Drive
 Rockville, MD 20852

CAFETERIA

RECOMMENDED ROOM LAYOUT

30	Voting Booths
10	Seated Voting
10	Poll Books
15	BMDs
8	Scanners
227	Max Voters



- 6'X2 1/2' Table
- Voting Booth
- Transfer Cart
- Window
- BMD Ballot Marking Device
- Electronic Poll Book
- Scanner
- Column
- 1 • Voter Travel
- 2 plug outlet
- Accessible Voting booth/ Ballot Marking Device
- Fire alarm

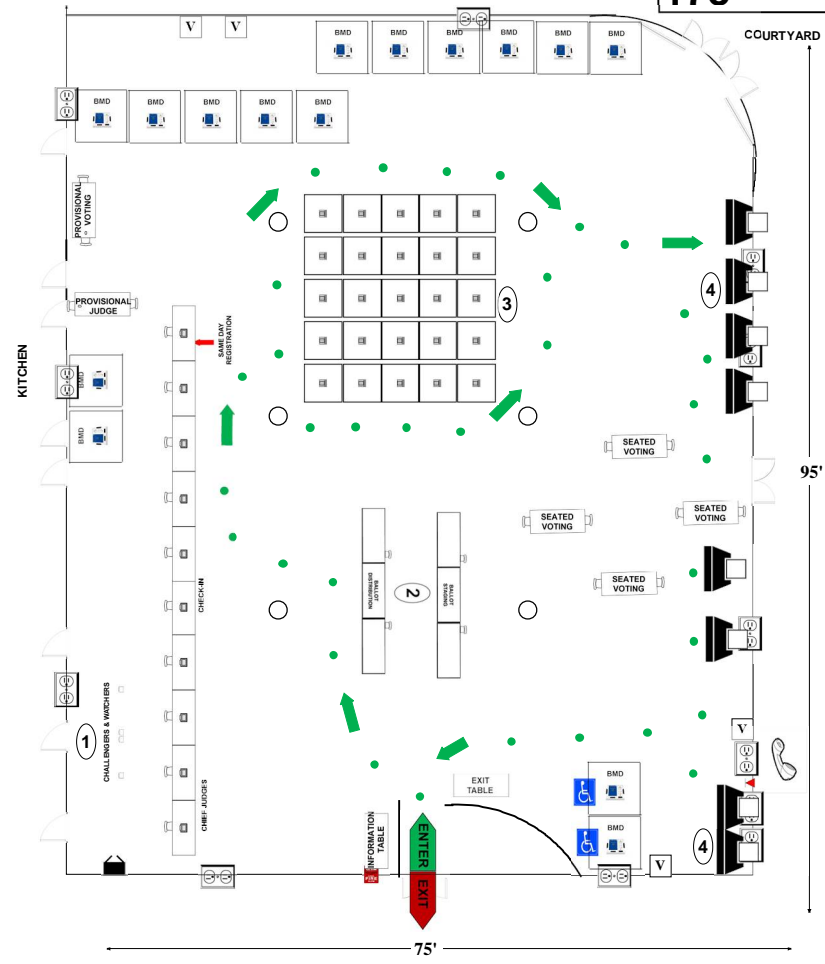
Rockville High School

2100 Baltimore Rd
Rockville, MD 20851

RECOMMENDED ROOM LAYOUT

CAFETERIA

- 30** Voting Booths
- 10** Seated Voting
- 10** Poll Books
- 15** BMDs
- 8** Scanners
- 178** Max Voters



- 6'x2 1/2' Table
- Voting Booth
- Transfer Cart
- Window
- Ballot Marking Device
- Electronic Poll Book
- Scanner
- Column
- Voter Travel
- 2 plug outlet
- Accessible Voting booth/ Ballot Marking Device
- Fire alarm

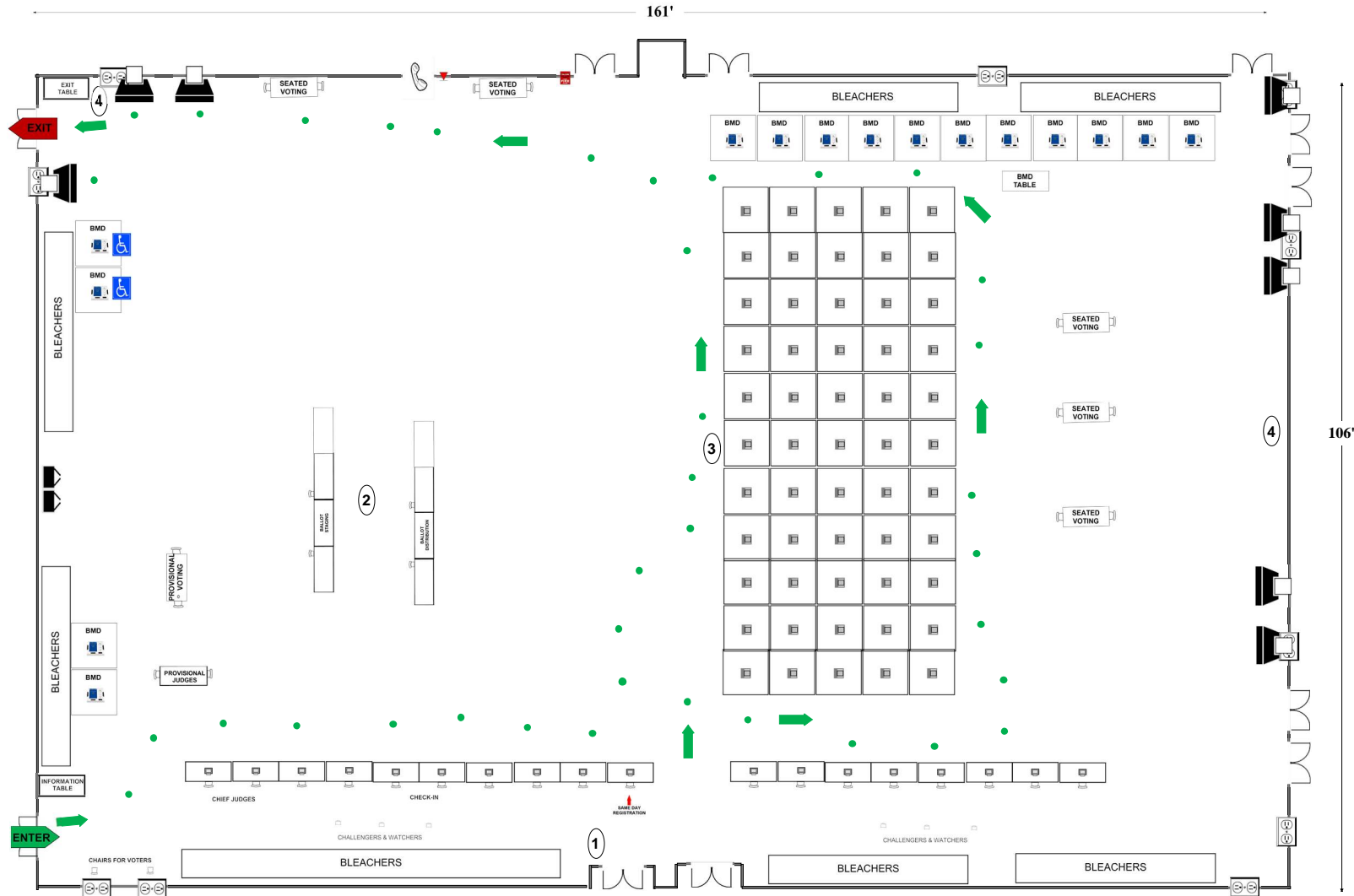
Montgomery County
Board of Elections
10/28/2020

Seneca Valley High School
 19401 Crystal Rock Dr
 Germantown, MD 20874

GYM

RECOMMENDED ROOM LAYOUT

- 45** Voting Booths
- 10** Seated Voting
- 10** Poll Books
- 15** BMDs
- 8** Scanners
- 424** Max Voters



- 6'x2 1/2' Table
- Voting Booth
- Transfer Cart
- Window
- Ballot Marking Device
- Vending Machine
- Electronic Poll Book
- Scanner
- Scanner Judge stands
2 - 3 feet from scanner
- Voter Travel
- 2 plug outlet
- Fire alarm
- Column

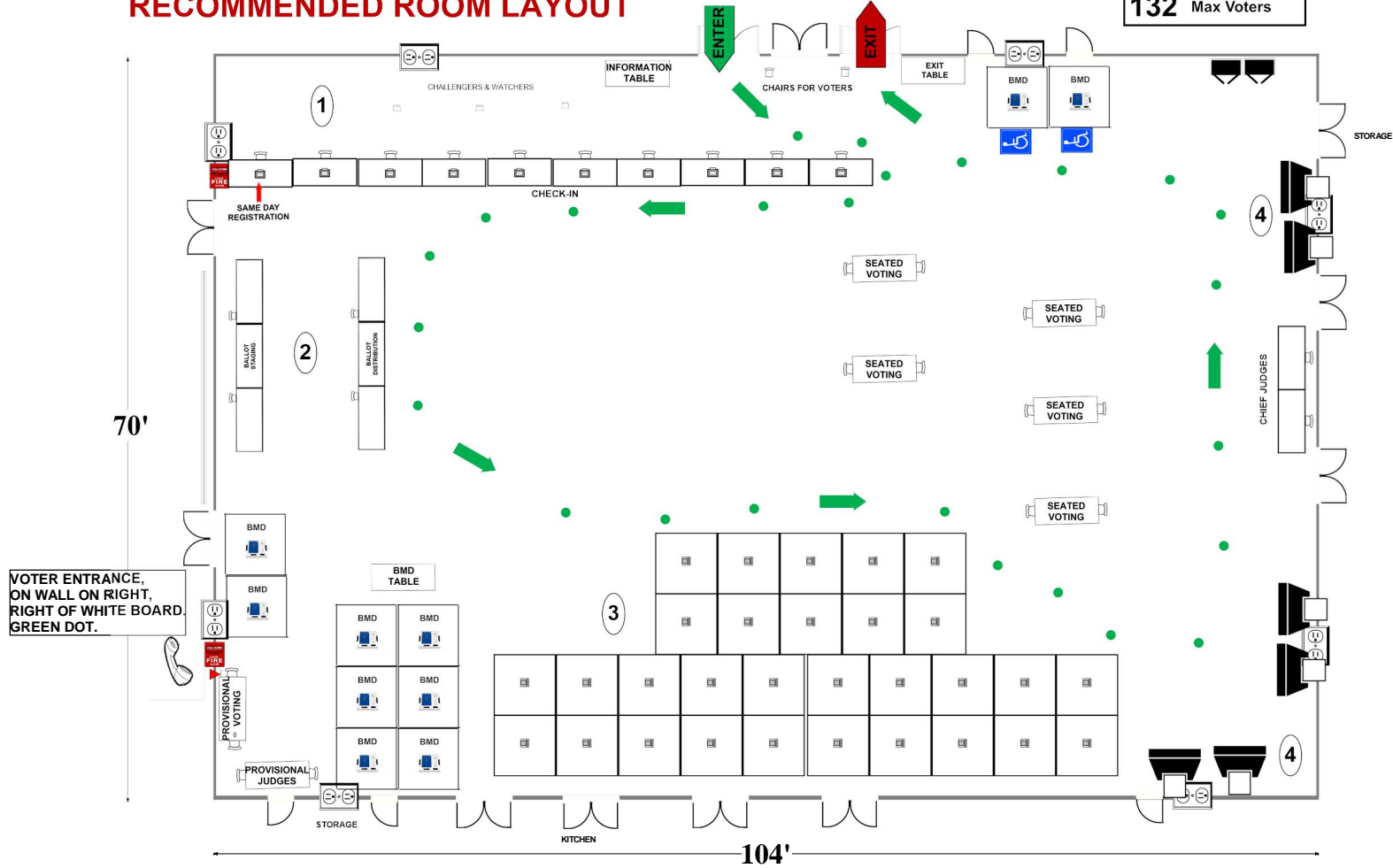
Sherwood High School

300 Olney-Sandy Spring Rd
Sandy Spring, MD 20860

RECOMMENDED ROOM LAYOUT

CAFETERIA

- 30** Voting Booths
- 10** Seated Voting
- 10** Poll Books
- 10** BMDs
- 6** Scanners
- 132** Max Voters



VOTER ENTRANCE,
ON WALL ON RIGHT,
RIGHT OF WHITE BOARD
GREEN DOT.

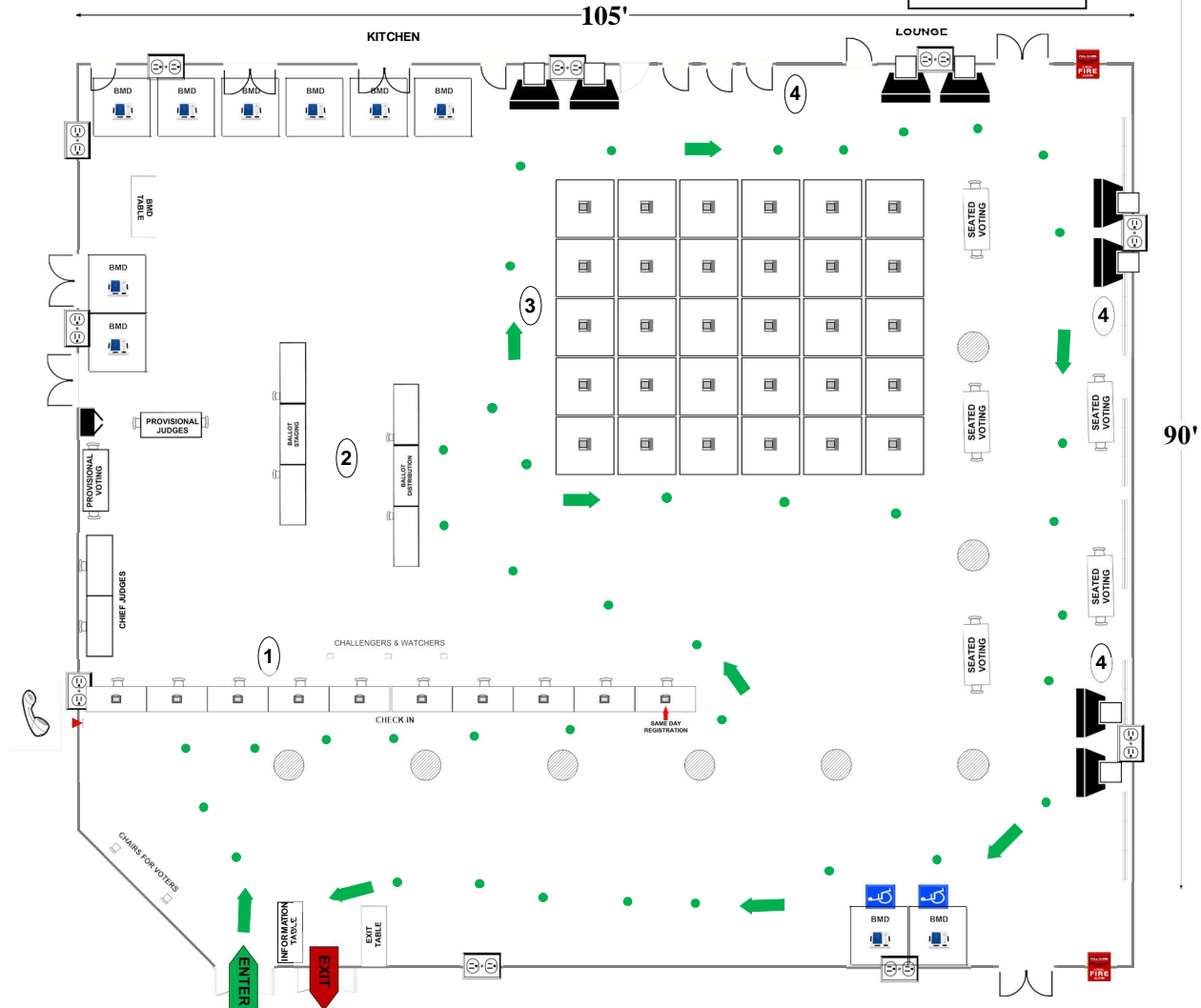
- 6'x2 1/2' Table
- Voting Booth
- Transfer Cart
- Window
- Ballot Marking Device
- Electronic Poll Book
- Scanner
- Column
- Voter Travel
- 2 plug outlet
- Accessible Voting booth/ Ballot Marking Device
- Fire alarm

Springbrook High School
 201 Valley Brook Drive
 Silver Spring, MD 20904

RECOMMENDED ROOM LAYOUT

CAFETERIA

- 30** Voting Booths
- 10** Seated Voting
- 10** Poll Books
- 10** BMD
- 8** Scanners
- 236** Max Voters



- | | | | | | |
|--|-----------------|--|-----------------------|--|--|
| | 6'X2 1/2' Table | | Ballot Marking Device | | Voter Travel |
| | Voting Booth | | Electronic Poll Book | | 2 plug outlet |
| | Transfer Cart | | Scanner | | Accessible Voting booth/ Ballot Marking Device |
| | Window | | Column | | Fire alarm |

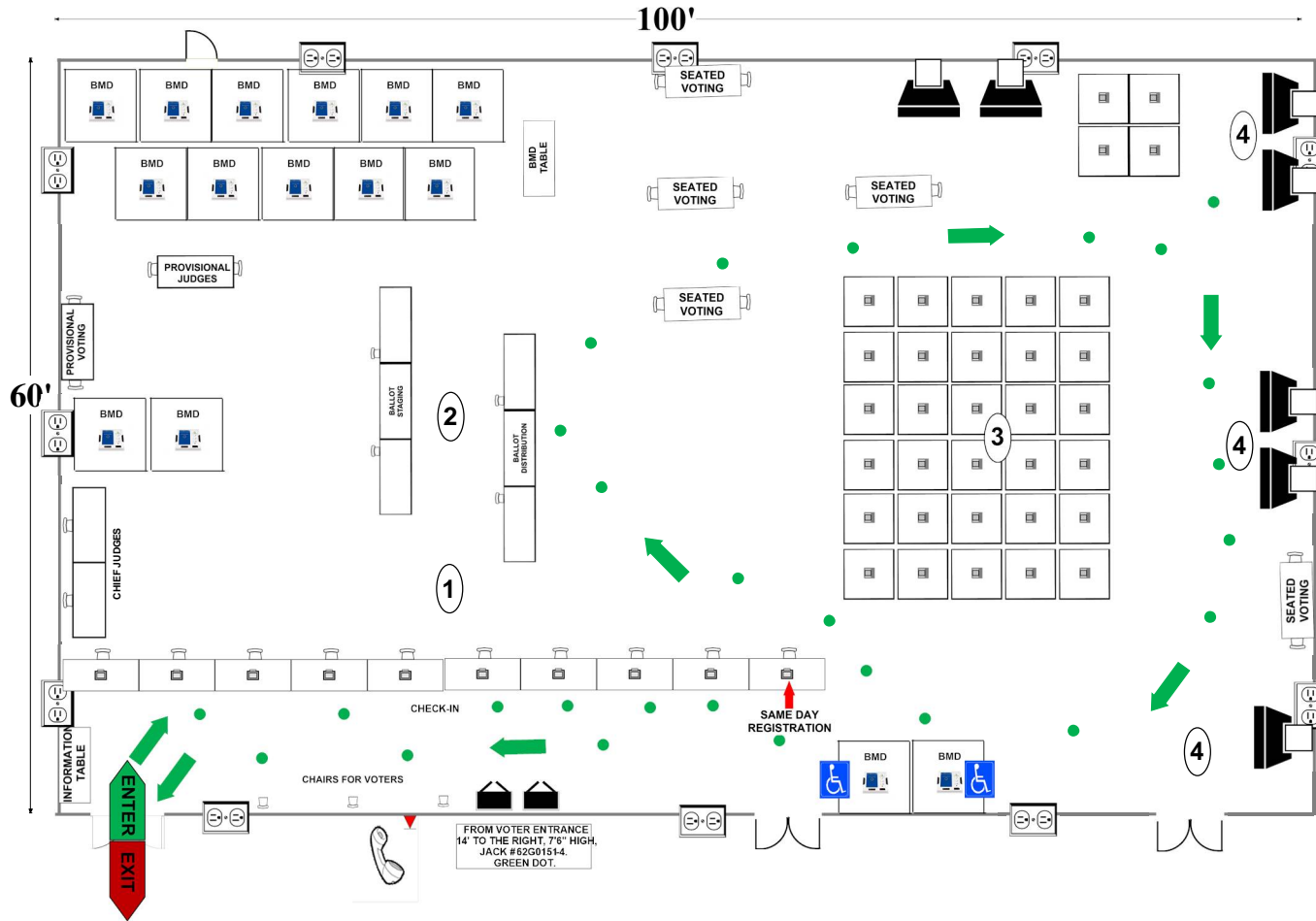
Montgomery County
 Board of Elections
 10/22/2020

Thomas S. Wootton High School
 2100 Wootton Pkwy.
 Rockville, MD 20850

LOWER GYM

RECOMMENDED ROOM LAYOUT

- 30** Voting Booths
- 10** Seated Voting
- 10** Poll Books
- 15** BMDs
- 7** Scanners
- 150** Max Voters



- 6'X2 1/2' Table
- Voting Booth
- Transfer Cart
- Window
- Ballot Marking Device
- Electronic Poll Book
- Scanner
- 1 • Voter Travel
- 2 plug outlet
- Accessible Voting booth/
Ballot Marking Device
- Fire alarm

Montgomery County
 Board of Elections
 10/21/2020

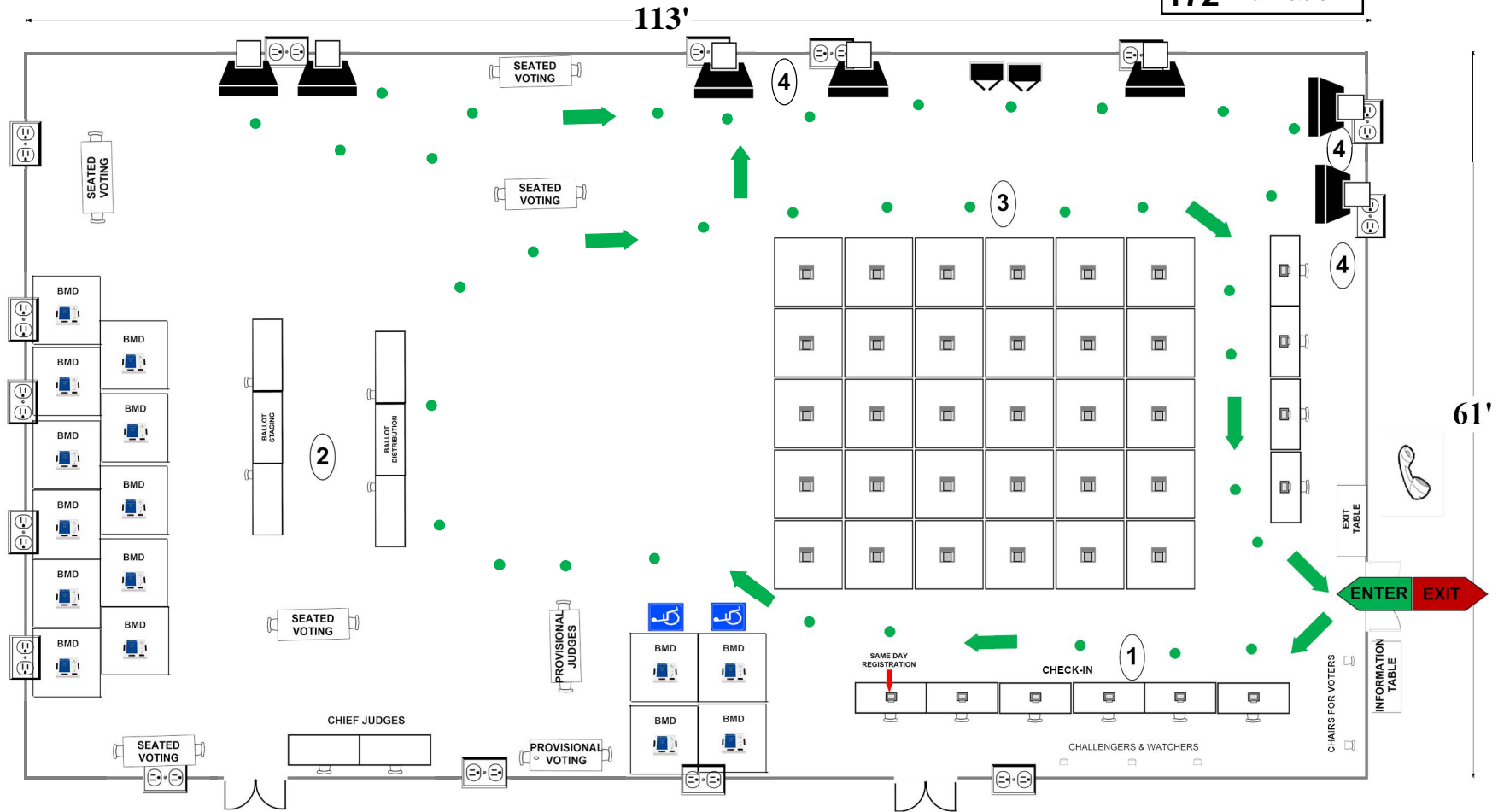
Walt Whitman High School

7100 Whittier Blvd.
Bethesda, MD 20817

SMALL GYM

RECOMMENDED ROOM LAYOUT

30	Voting Booths
10	Seated Voting
10	Poll Books
15	BMDs
7	Scanners
172	Max Voters



- 6'x2 1/2' Table
- Voting Booth
- Transfer Cart
- Window
- Ballot Marking Device
- Vending Machine
- Electronic Poll Book
- Scanner
- Scanner Judge stands
2 - 3 feet from scanner
- 1 Voter Travel
- 2 plug outlet
- Fire alarm

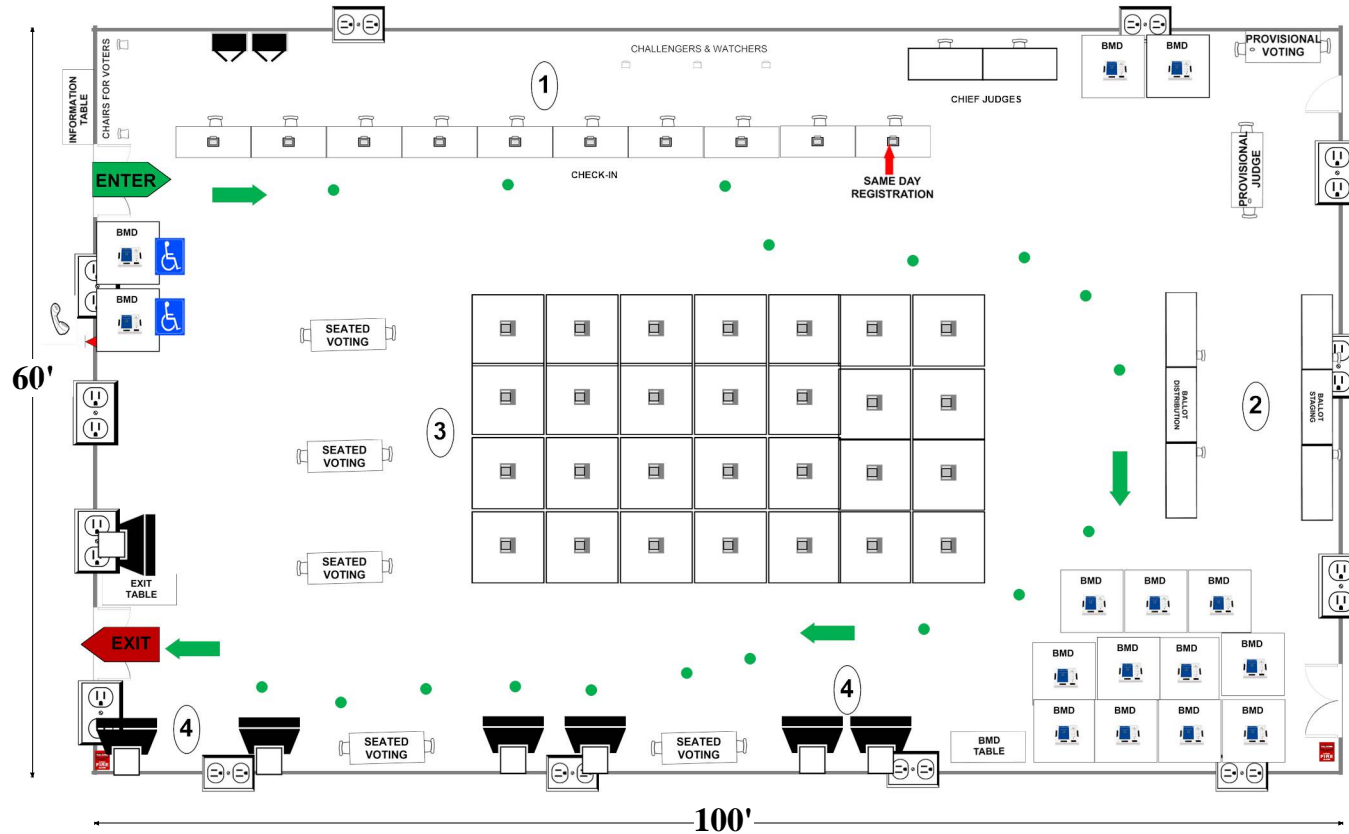
Montgomery County
Board of Elections
10/23/2020

Watkins Mill High School
 10301 Apple Ridge Rd
 Gaithersburg, MD 20879

AUXILIARY GYM

RECOMMENDED ROOM LAYOUT

- 28** Voting Booths
- 10** Seated Voting
- 10** Poll Books
- 15** BMDs
- 7** Scanners
- 150** Max Voters



- 6'X2 1/2' Table
- Voting Booth
- Transfer Cart
- Window
- Ballot Marking Device
- Vending Machine
- Electronic Poll Book
- Scanner
- Scanner Judge stands
2 - 3 feet from scanner
- 1 Voter Travel
- 2 plug outlet
- Fire alarm

Montgomery County
 Board of Elections

10/22/2020

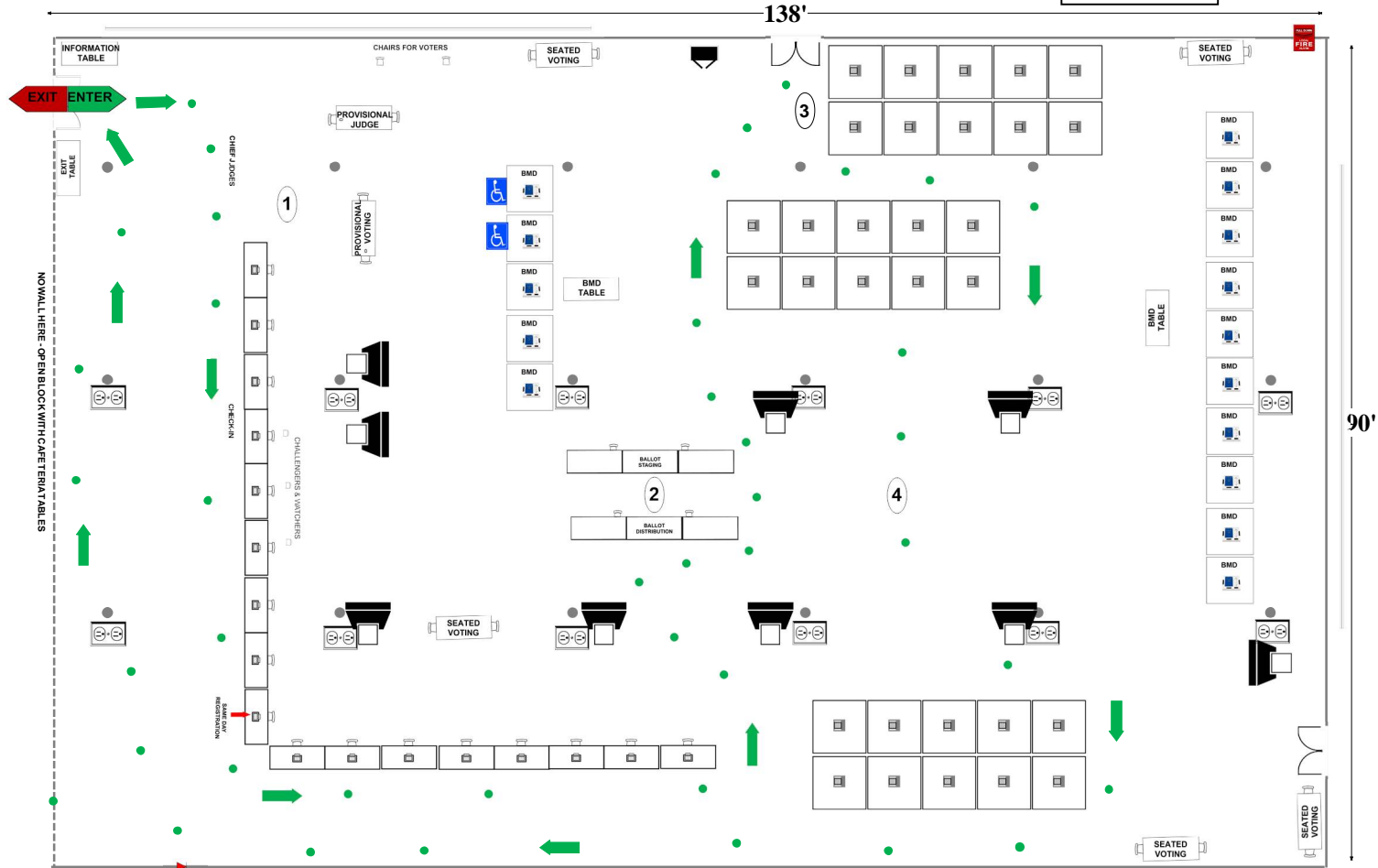
Wheaton High School

12401 Dalewood Dr
Silver Spring, MD 20906

RECOMMENDED ROOM LAYOUT

CAFETERIA

- 30** Voting Booths
- 10** Seated Voting
- 17** Poll Books
- 15** BMDs
- 9** Scanners
- 311** Max Voters



- 6'X2 1/2' Table
- Voting Booth
- Transfer Cart
- Window
- Ballot Marking Device
- Vending Machine
- Electronic Poll Book
- Scanner
- Scanner Judge stands
2 - 3 feet from scanner
- Voter Travel
- 2 plug outlet
- Fire alarm
- Column

Montgomery County
Board of Elections
10/23/2020

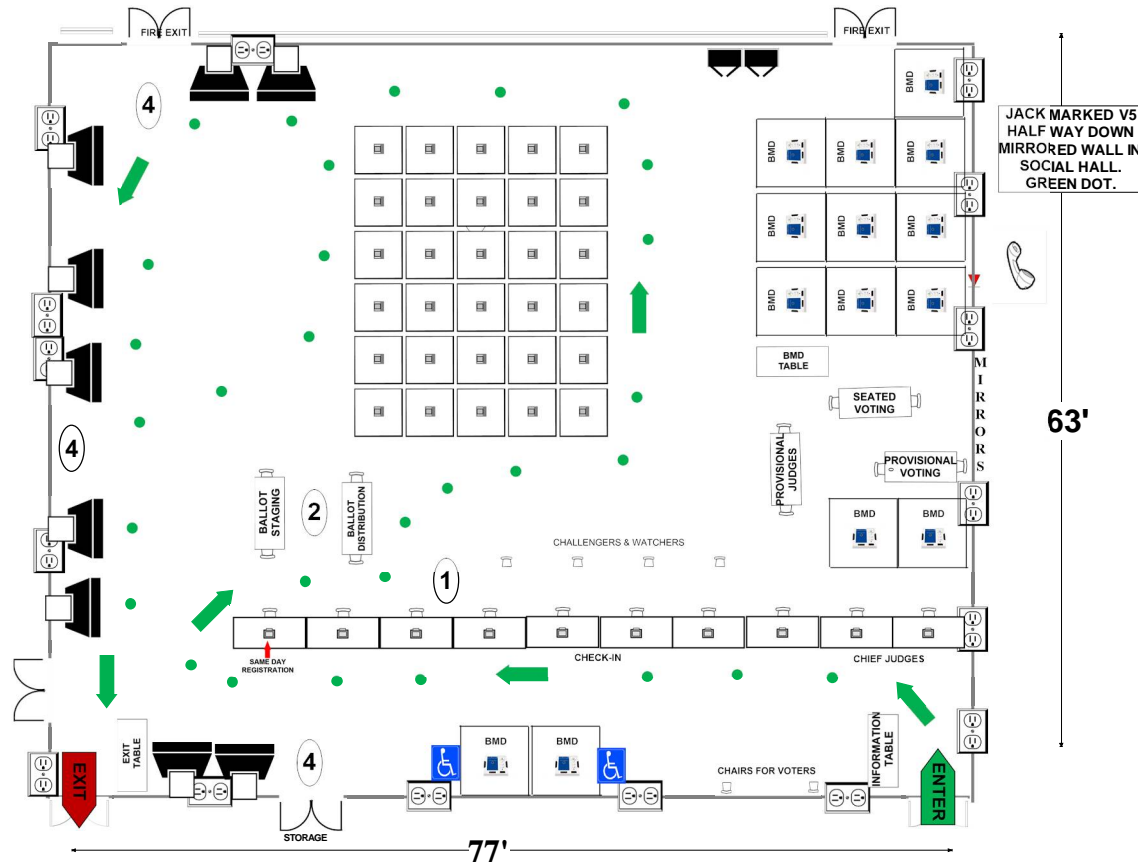
White Oak Community Recreation Center

1700 April Lane
Silver Spring, MD 20904

SOCIAL HALL

RECOMMENDED ROOM LAYOUT

30	Voting Booths
10	Seated Voting
10	Poll Books
15	BMDs
9	Scanners
121	Max Voters



JACK MARKED V5
HALF WAY DOWN
MIRRORED WALL IN
SOCIAL HALL.
GREEN DOT.

63'

77'

- 6'X2 1/2' Table
- Voting Booth
- Transfer Cart
- Window
- Ballot Marking Device
- Electronic Poll Book
- Scanner
- Voter Travel
- 2 plug outlet
- Accessible Voting booth/ Ballot Marking Device
- Fire alarm

Montgomery County
Board of Elections

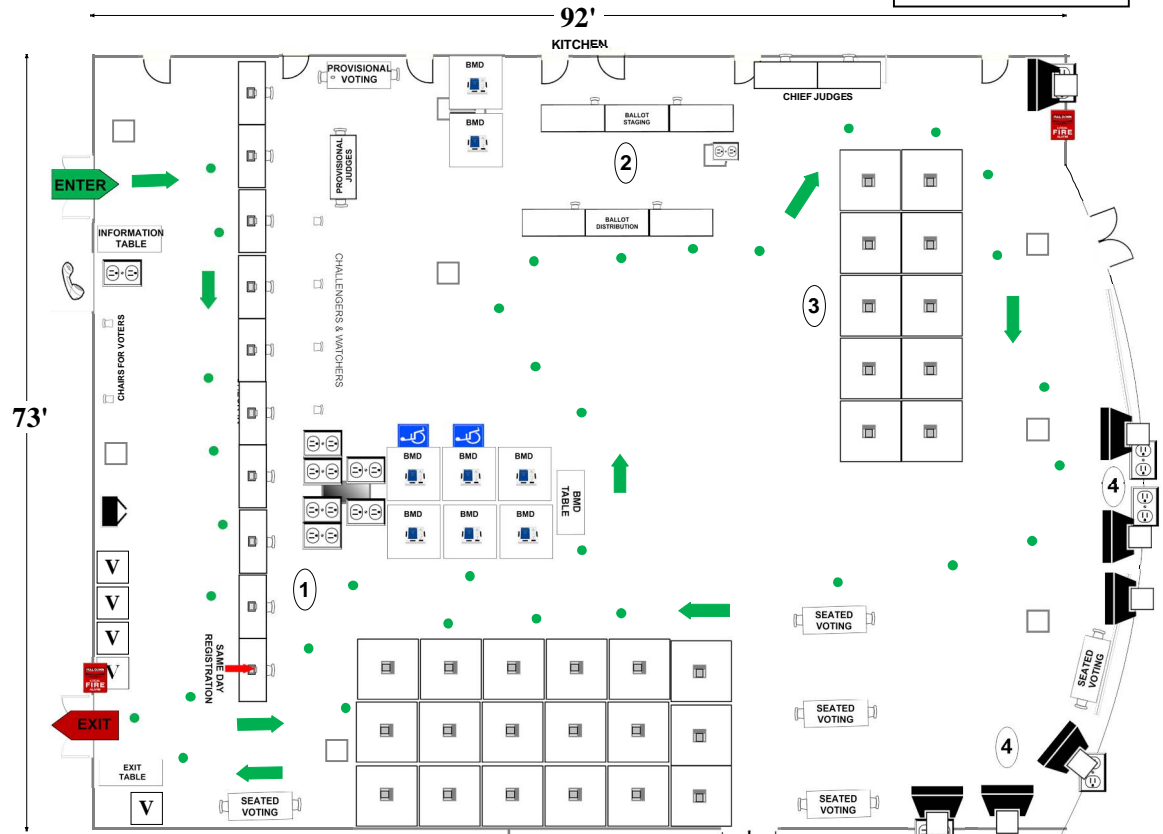
10/24/2020

Winston Churchill High School
 11300 Gainsborough Rd
 Potomac, MD 20854

CAFETERIA

RECOMMENDED ROOM LAYOUT

- 30** Voting Booths
- 10** Seated Voting
- 10** Poll Books
- 10** BMDs
- 7** Scanners
- 168** Max Voters



- 6'X2 1/2' Table
- Voting Booth
- Transfer Cart
- Window
- Bookcase
- Ballot Marking Device
- Vending Machine
- Electronic Poll Book
- Scanner
- Scanner Judge stands
2 - 3 feet from scanner
- Voter Travel
- 2 plug outlet
- Fire alarm
- Column