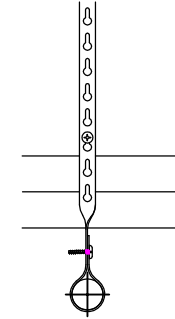
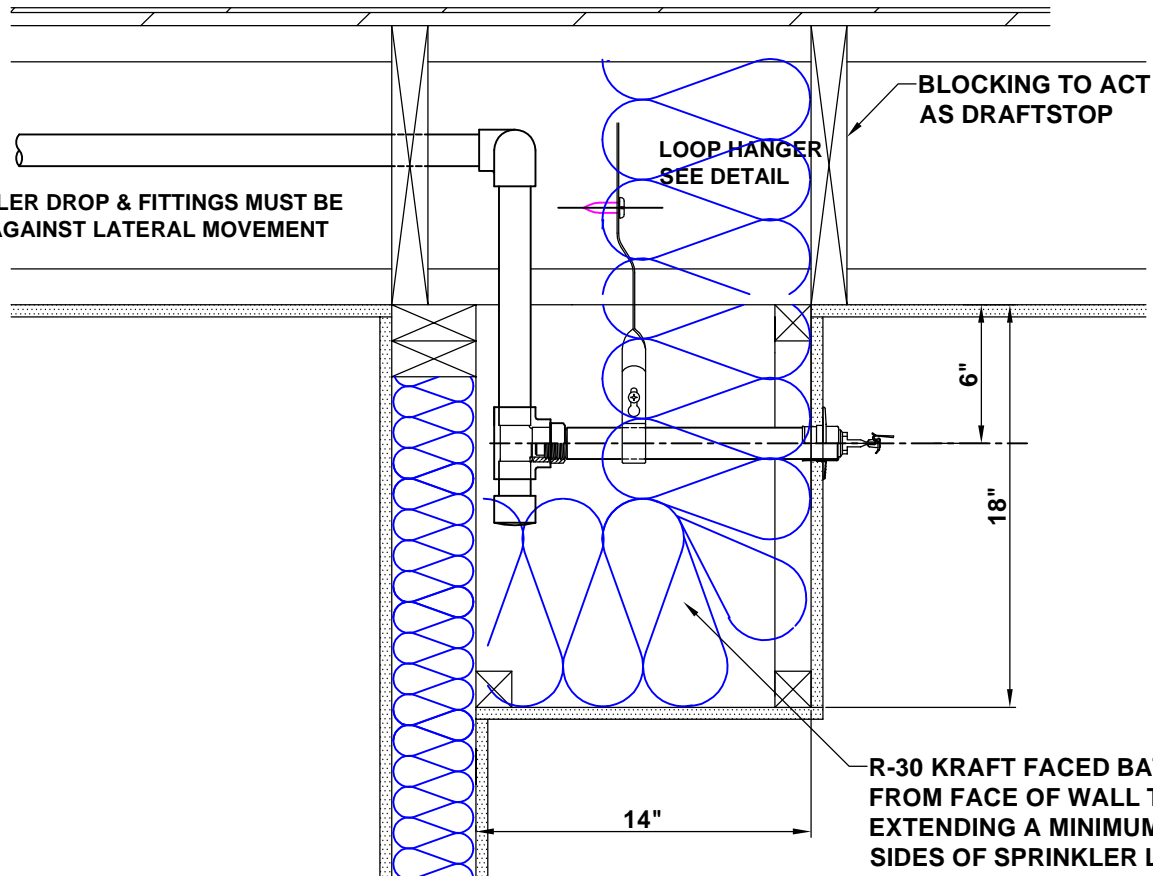


HEATED INTERIOR SPACE ABOVE

NOTE: SPRINKLER DROP & FITTINGS MUST BE RESTRAINED AGAINST LATERAL MOVEMENT



LOOP HANGER DETAIL

HEATED INTERIOR SPACE

GARAGE

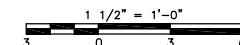
DS-1 QR HORIZONTAL DRY SIDEWALL
 5.6 K-FACTOR, 12" BARREL LENGTH (TY3335)
 100 SQUARE FEET PER SPRINKLER
 5'-0" MAX. TO WALL
 10'-0" MAX. TO ADJACENT SPRINKLER
 6'-0" MIN. TO ADJACENT SPRINKLER

GARAGE BULKHEAD DETAIL

W / LIVING SPACE ABOVE

THIS DRAWING IS PROPRIETARY AND OWNED SOLELY BY
MILLER FIRE PROTECTION INC.
 2750 MARBLE COURT
 FORESTVILLE, MD. 20747
 TEL (301) 736-3000

MARYLAND LIC. # MSC 173 MONTG. CO. LIC. #G-1-07-20



DRAWN BY: R.C. DERR
 DATE: MAR. 6, 2007

BULKHEAD DETAIL #0

**NOTE: ARRANGEMENT SHOWN HAS NOT BEEN APPROVED
 BY MONTGOMERY COUNTY AS OF 3/6/2007**