

Bus Rapid Transit Planning in Montgomery County



David Anspacher
Tom Autrey
Larry Cole

July 16, 2014





Presentation Outline

- What is Bus Rapid Transit?
- Purpose of the Master Plan?
- Cross-Jurisdictional Coordination

What is Bus Rapid Transit?

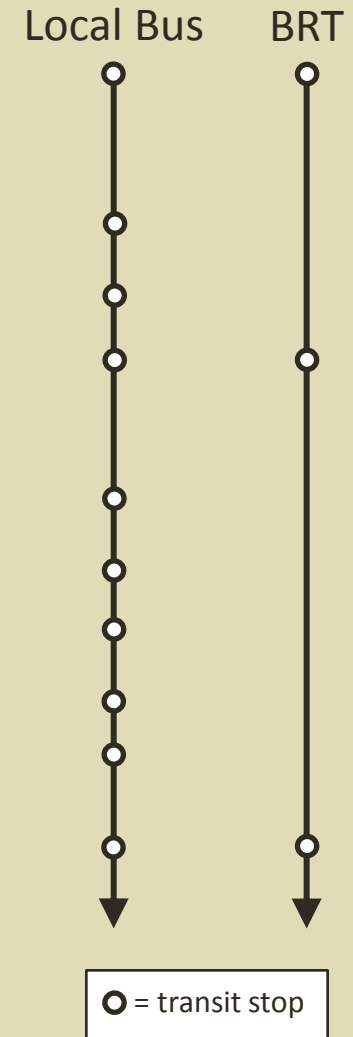
A transit system that combines:

- Convenience, comfort, and speed of light rail
- Flexibility and cost savings of buses

Elements of BRT



Elements of BRT



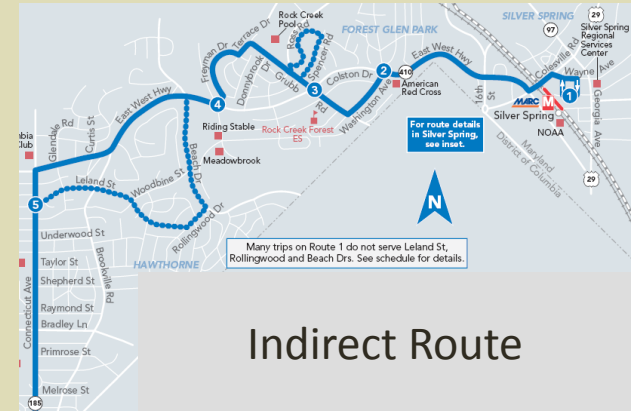
Elements of BRT



Elements of BRT



Elements of BRT



Indirect Route

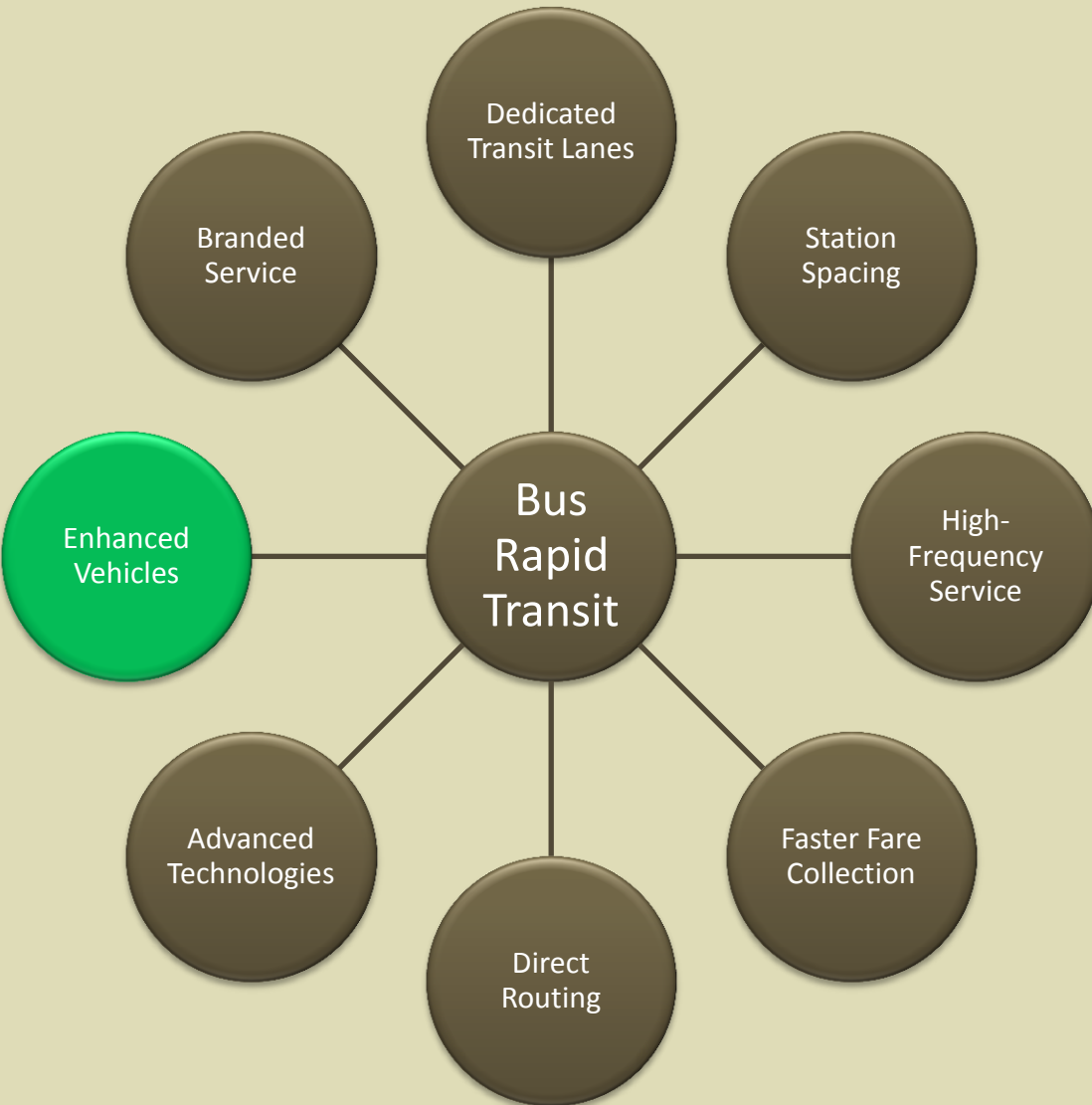


Direct Route

Elements of BRT



Elements of BRT

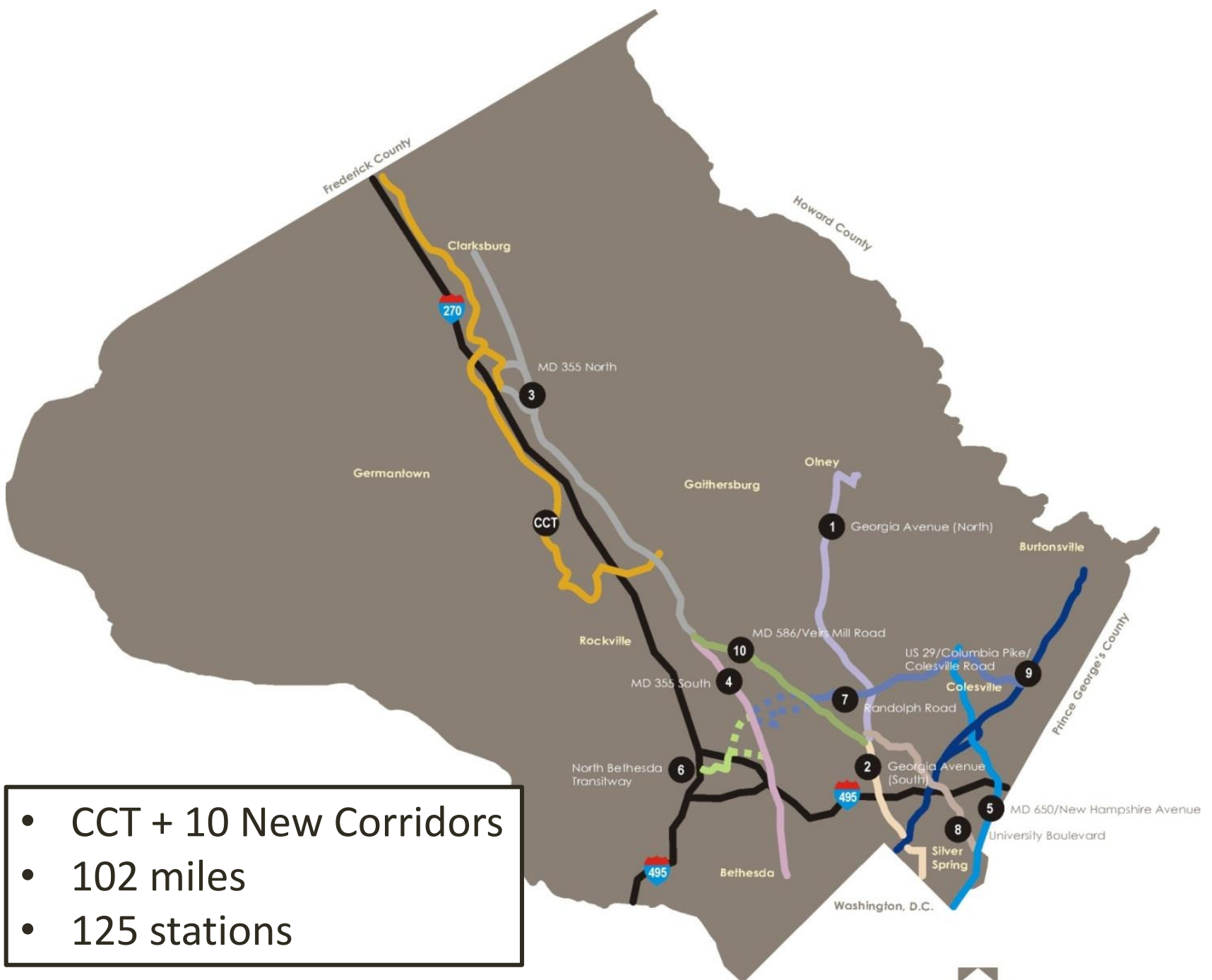


Elements of BRT



Purpose of Master Plan

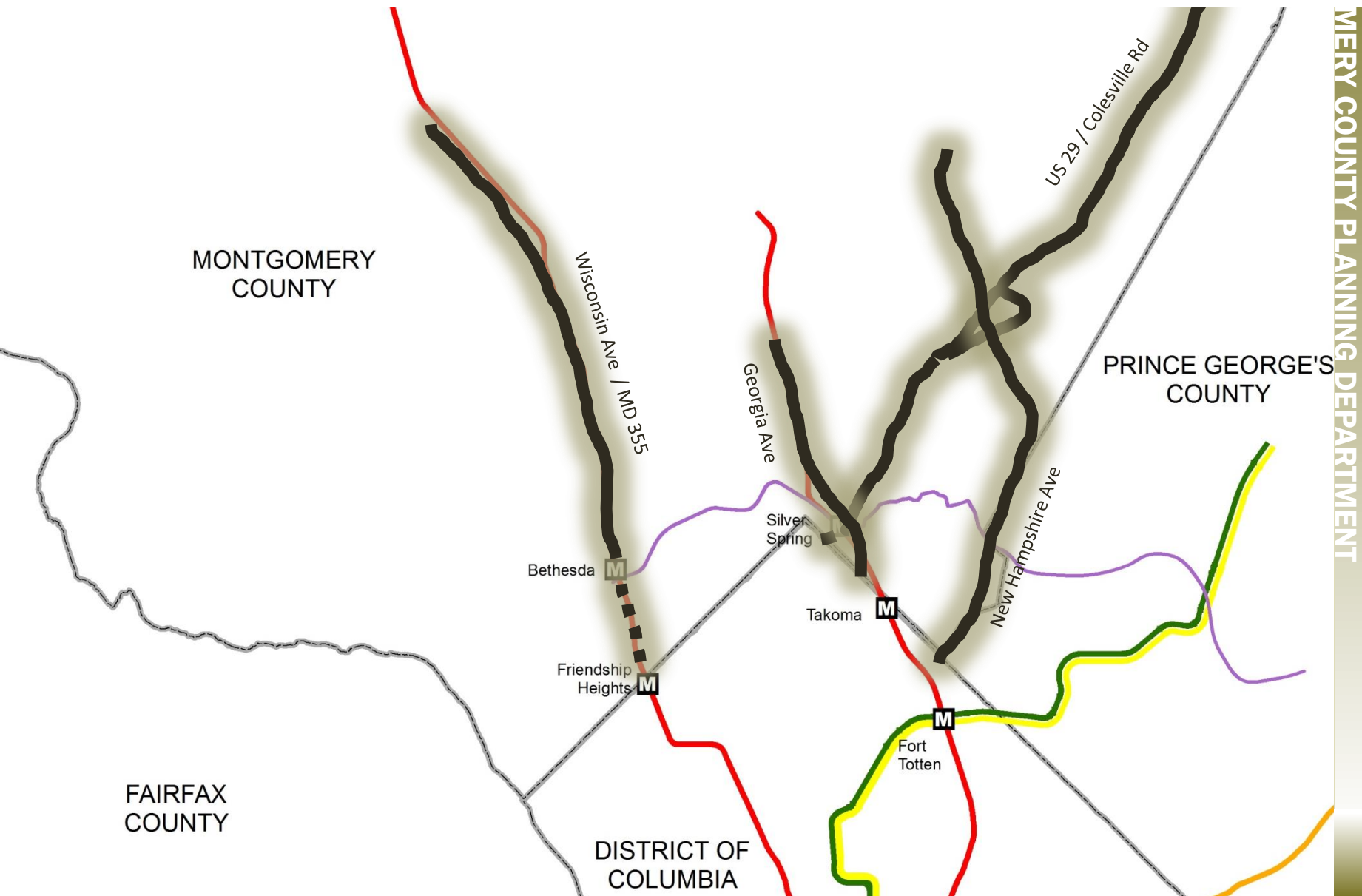
- Establishes a rapid transit network vision for Montgomery County focused on BRT
- Establishes space for transit lanes
- Provides guidance on:
 - Where to dedicate lanes for BRT
 - Where space for dedicated lanes comes from (road widening, existing traffic)
 - Station location



Cross-Jurisdictional Coordination

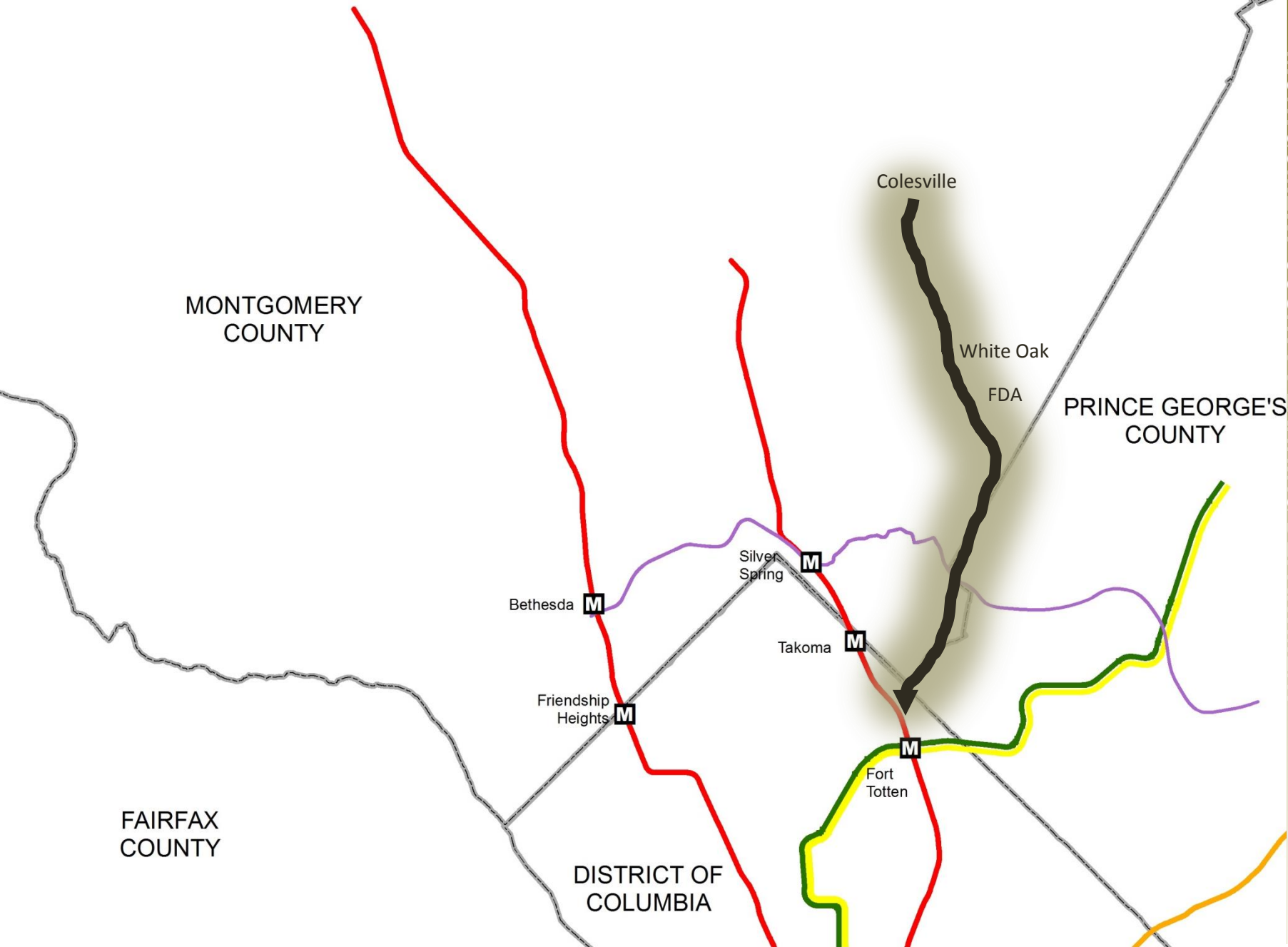
- New Hampshire Avenue
- Georgia Avenue
- US 29 / Colesville Road
- MD 355 / Wisconsin Avenue

Cross-Jurisdictional Coordination

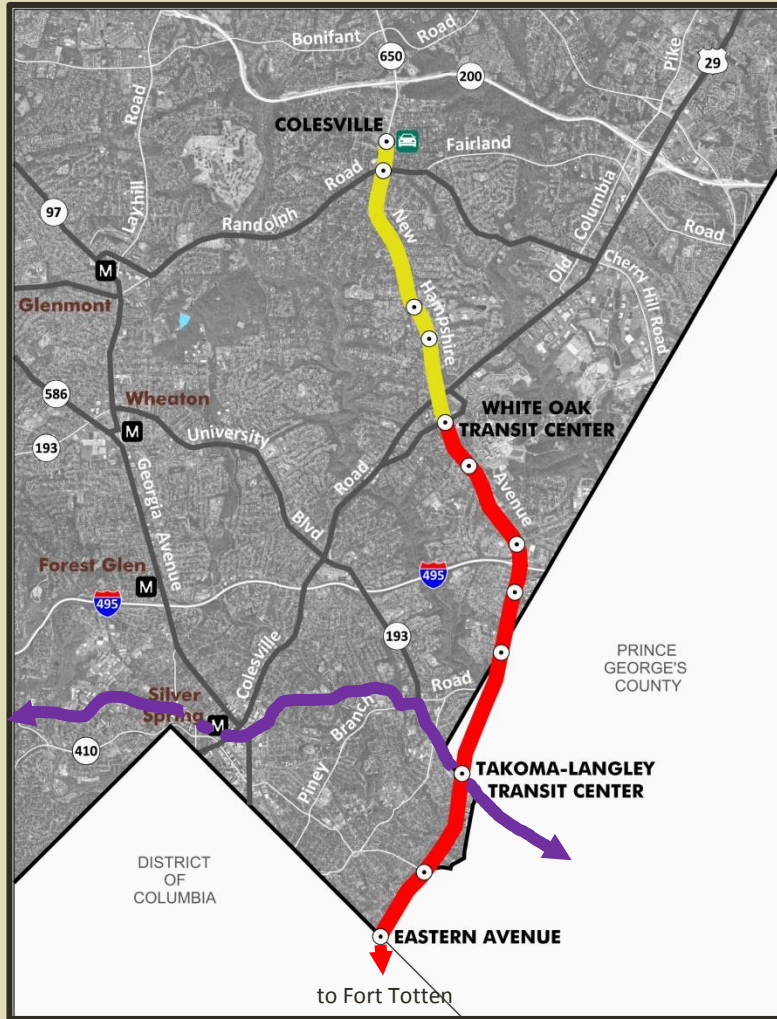




New Hampshire Avenue



New Hampshire Avenue



Mixed Traffic
Dedicated Transit Lanes Not Recommended

Dedicated Transit Lanes Recommended
(space comes from road widening)

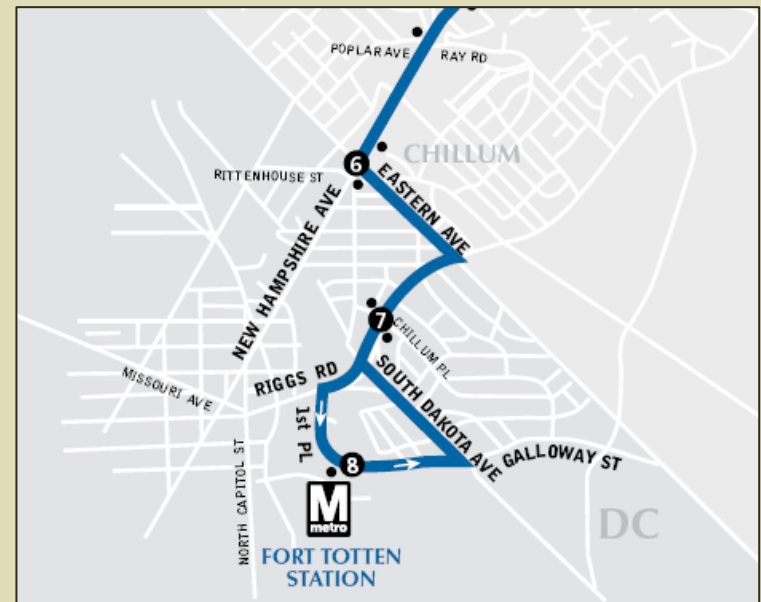
Dedicated Transit Lanes Recommended
(space comes from lane repurposing)

New Hampshire Avenue

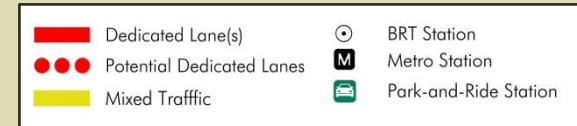
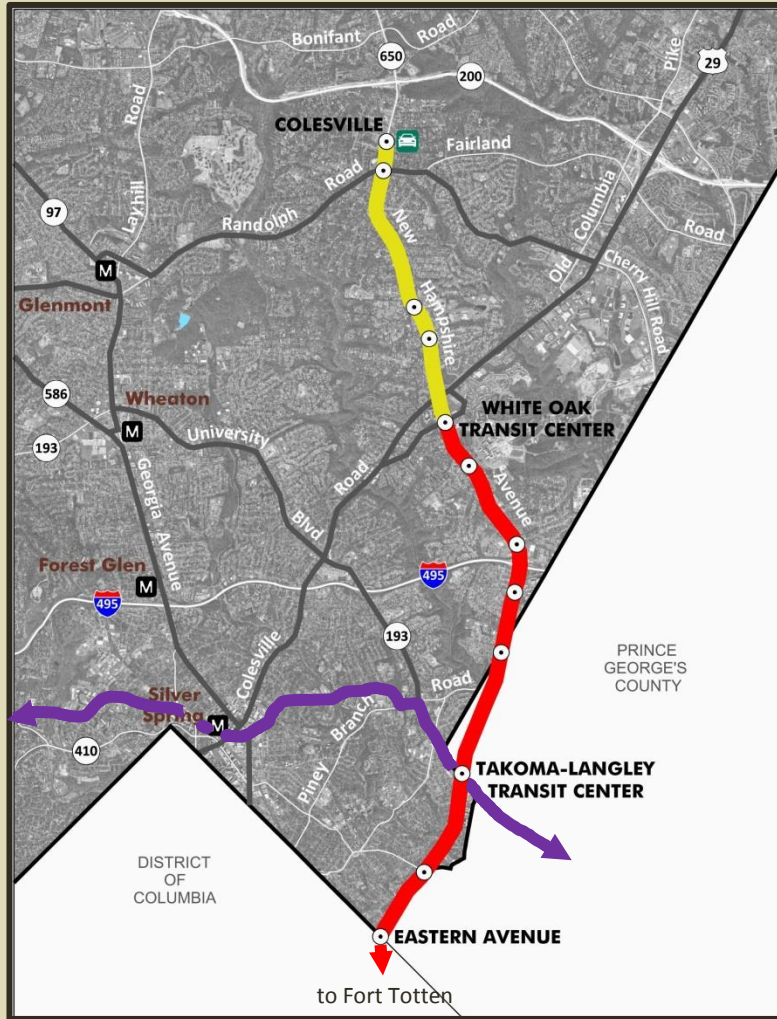
K6 Metrobus Route



K9 MetroExtra Route



New Hampshire Avenue



Jurisdictions

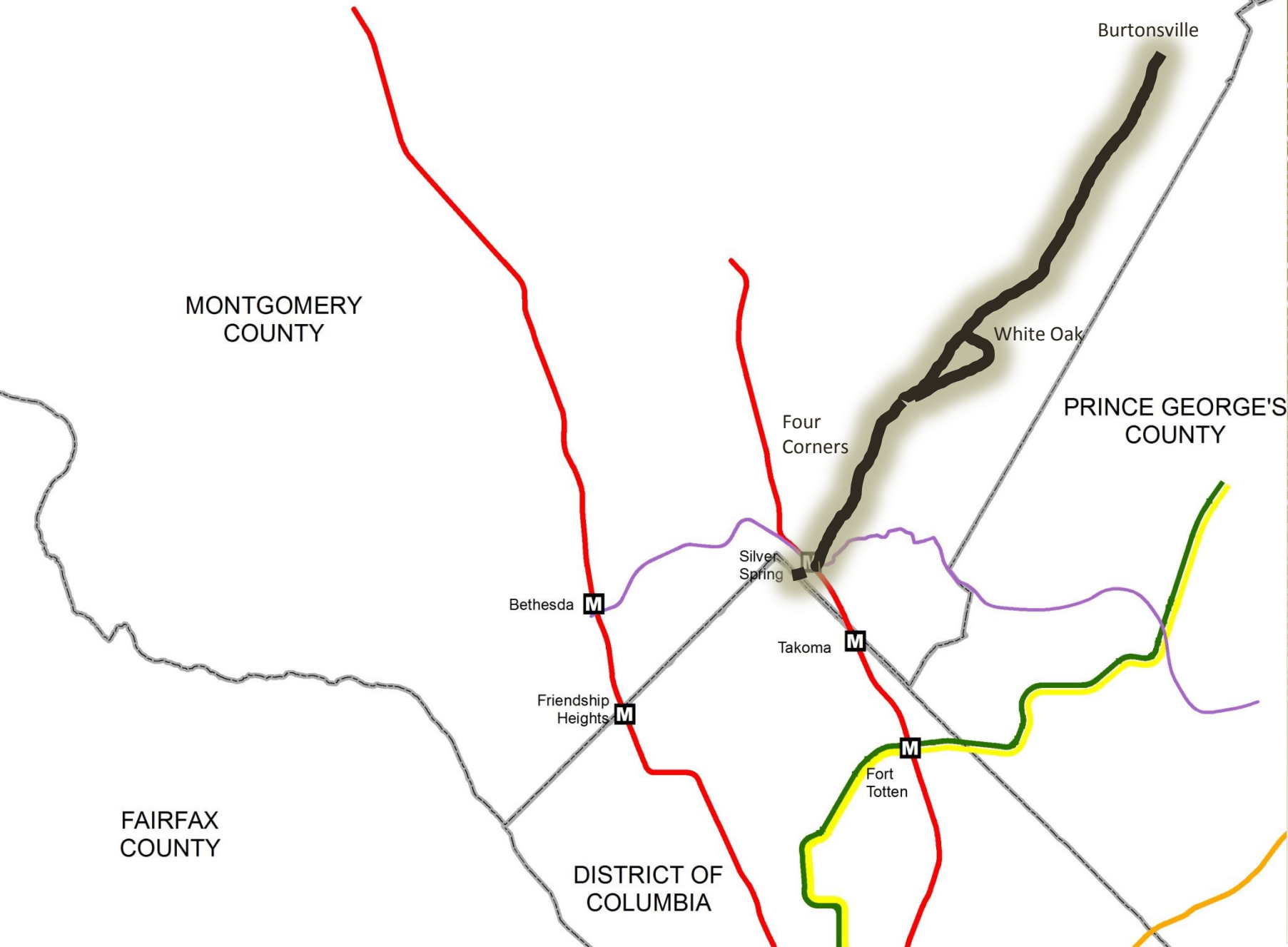
- District of Columbia
- Prince George's County
- City of Takoma Park
- Montgomery County
- WMATA

Issues

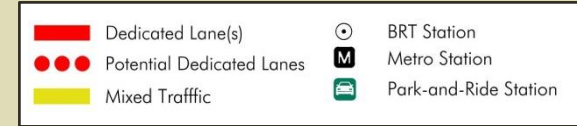
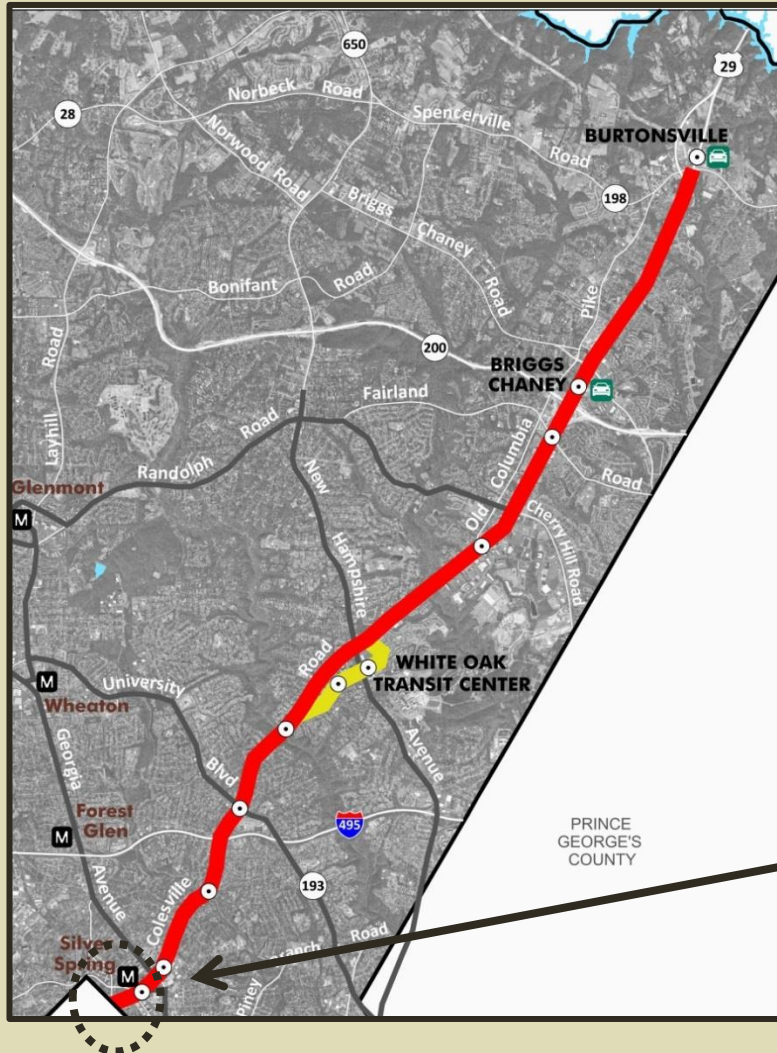
- Routing to Fort Totten
- Stop locations
- Dedicated transit lanes in Prince George's County



US 29 / Colesville Road



US 29 / Colesville Rd



Dedicated Transit Lanes Recommended
(space comes from lane repurposing)

S9 16th Street Limited Line

For route and schedule information
Call 202-637-7000
www.wmata.com



Dedicated Transit Lanes Recommended
(space comes from lane repurposing)

Jurisdictions

- District of Columbia
- Montgomery County
- WMATA

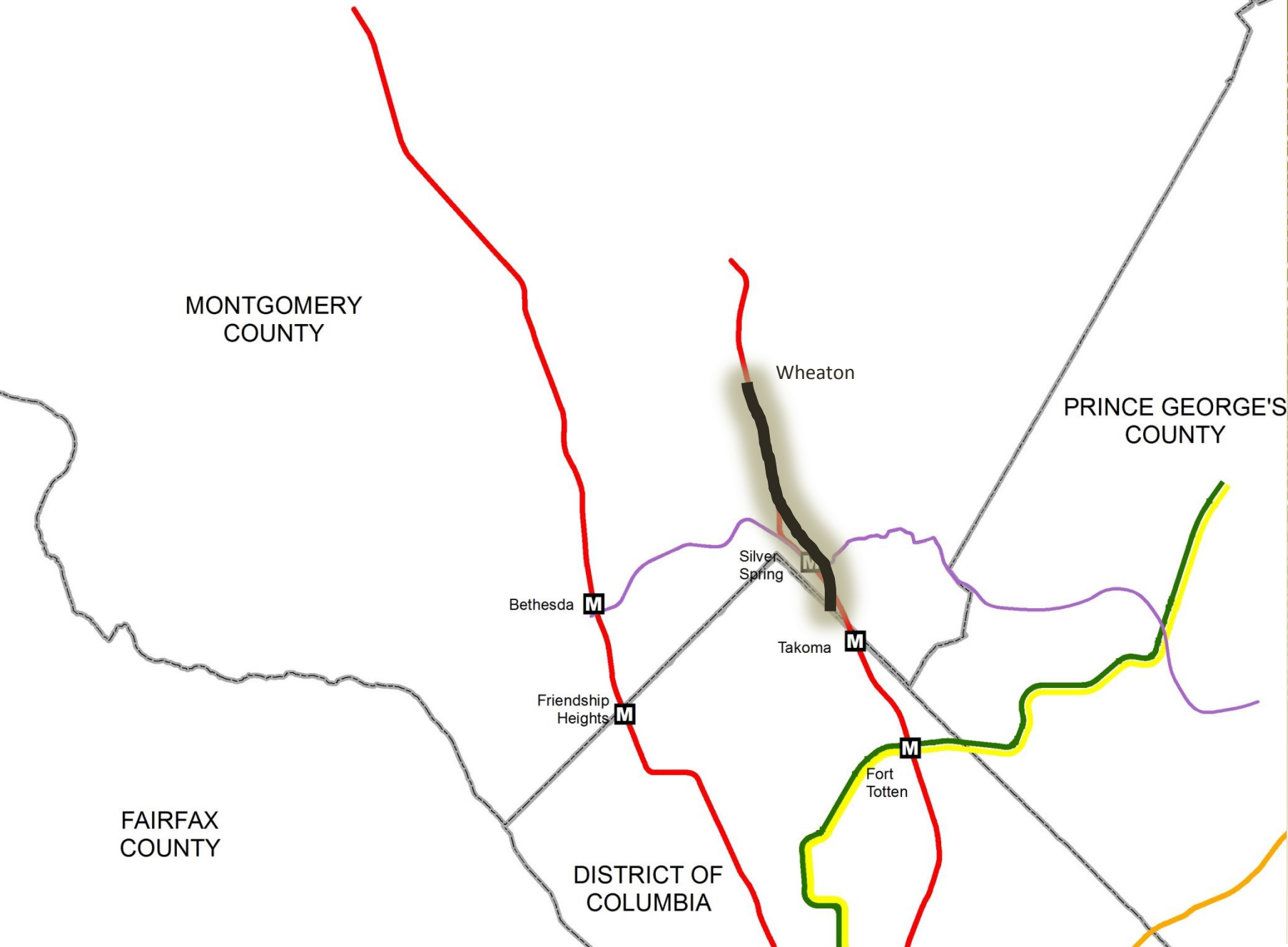
Issues

- SHA Facility Planning Study
- 16th Street Bus Lane Study

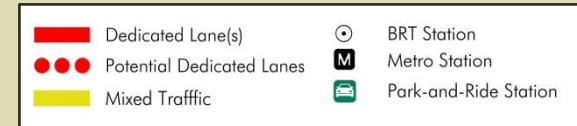
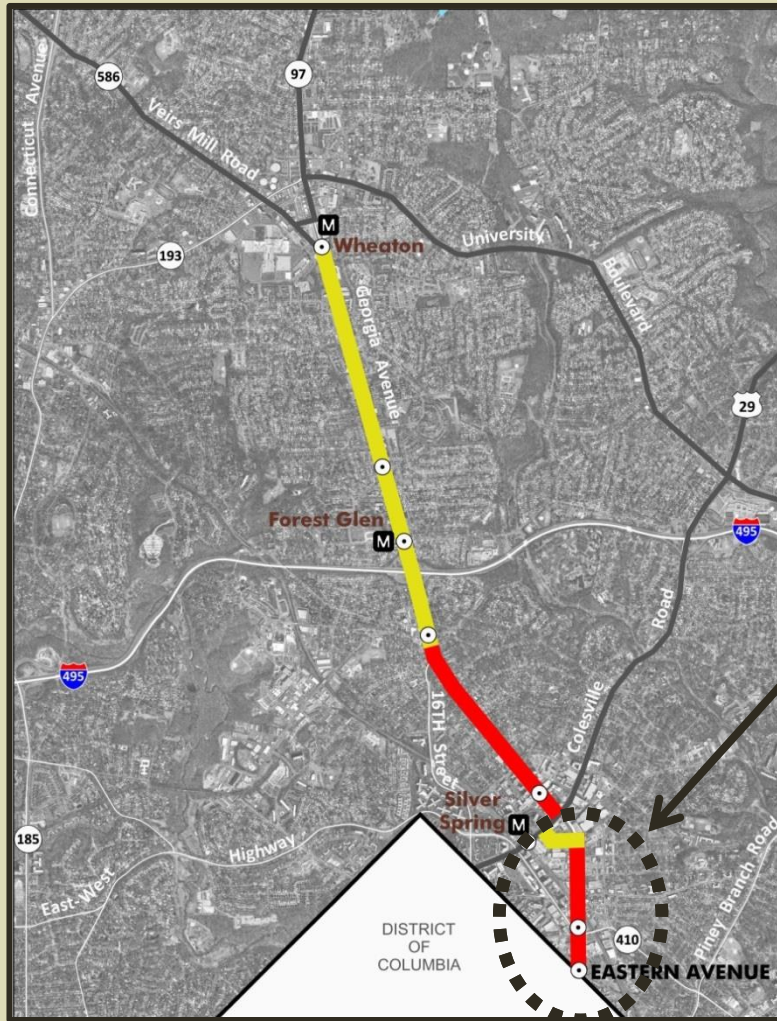




Georgia Avenue



Georgia Avenue South



Dedicated Transit Lanes Recommended

- space comes from lane repurposing
- transit lanes could be use by BRT or streetcar

Georgia Avenue South

North-South Corridor Planning Study Four Alternatives: Route Maps

Alternative 1

Alternative 2

Alternative 3

Alternative 4



Jurisdictions

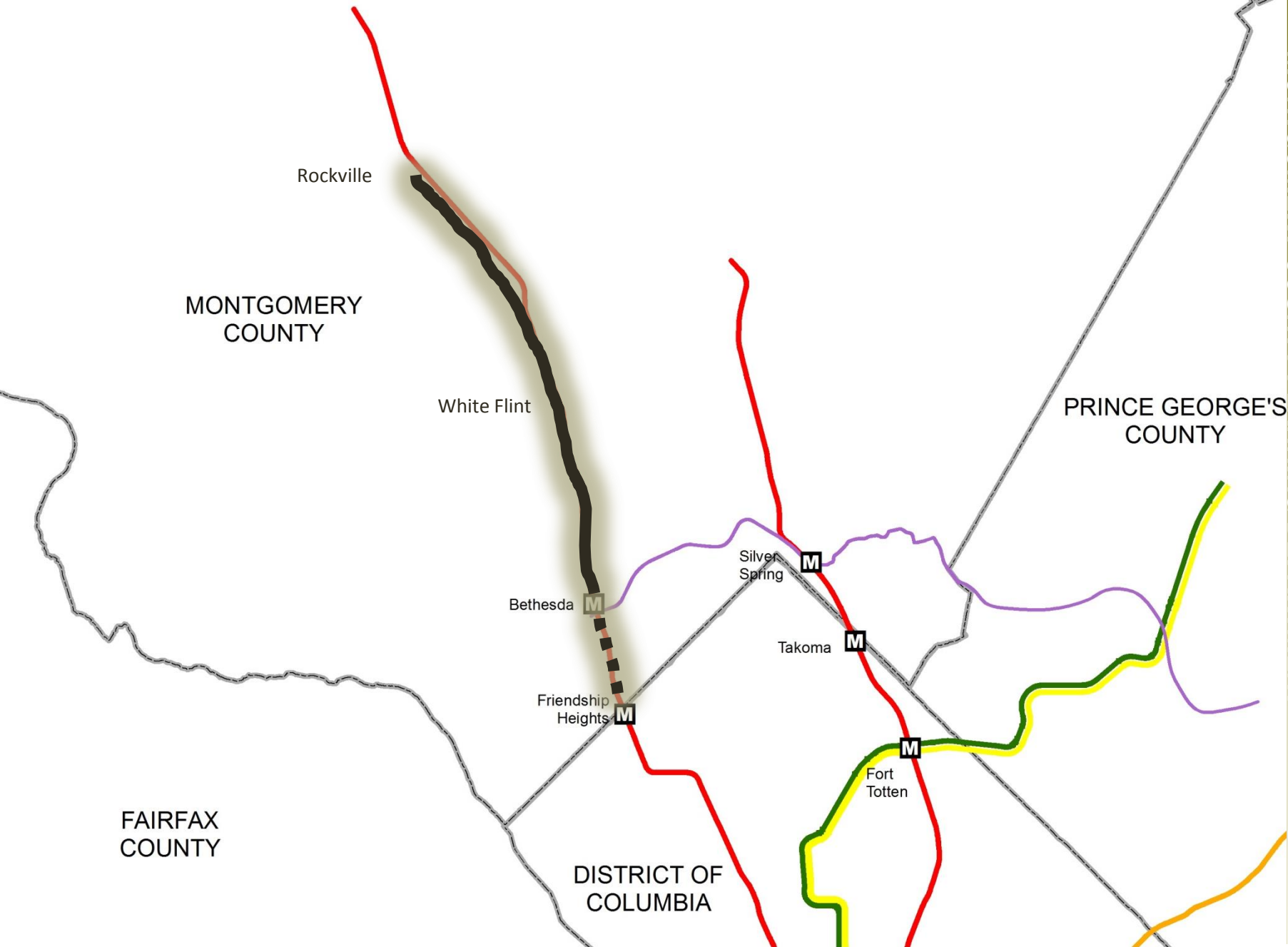
- District of Columbia
- Montgomery County
- WMATA

Issues

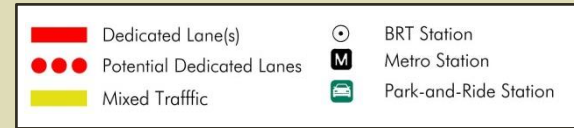
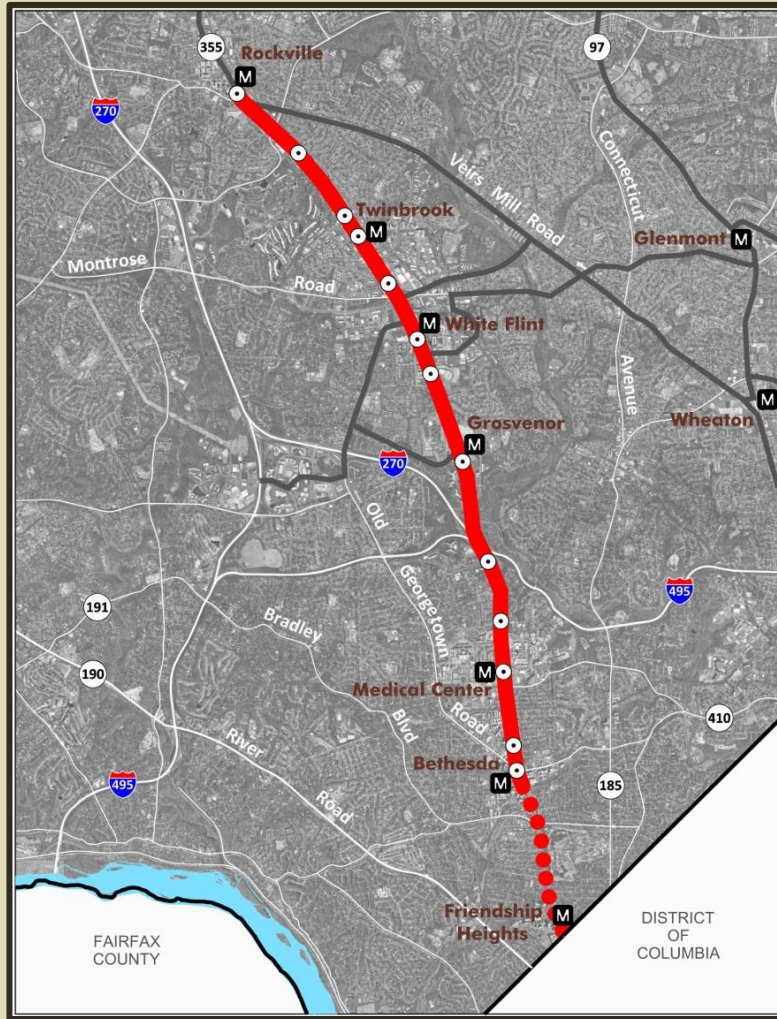
- Extend streetcar to Silver Spring?
- Lanes in median or side of road?
- Turn around?
- Stop Locations



Wisconsin Avenue



Wisconsin Ave



Dedicated Transit Lanes Recommended
(space comes from road widening)

Dedicated Transit Lanes Recommended if DC includes Dedicated Lanes in its Plans to National Cathedral and Georgetown
(space comes from lane repurposing)

Wisconsin Ave



Jurisdictions

- District of Columbia
- Montgomery County
- WMATA

Issues

- Bus-only lanes on Wisconsin Ave



David Anspacher

david.anspacher@montgomeryplanning.org

301-495-2191

Tom Autrey

thomas.autrey@montgomeryplanning.org

301-495-4533

Larry Cole

larry.cole@montgomeryplanning.org

301-495-4528

