



# **MONTGOMERY COUNTY INTERAGENCY COMMISSION ON HOMELESSNESS**

**NOVEMBER 2, 2022**

**ROCKVILLE MEMORIAL LIBRARY/ HYBRID  
VIRTUAL**



# AGENDA

- I. Welcome and Introductions of Commissioners
- II. Review and Approve September Minutes
- III. HUD CoC and Supplemental NOFO submissions
- IV. Strategy and Planning Committee Update
- V. Built for Zero: Zero for all Populations
- VI. Review on Montgomery County's Progress on Ending Homelessness
- VII. Public Comments
- VIII. Announcements

Next Meeting: Wednesday January 11, 2023



# HUD CONTINUUM OF CARE AND UNSHELTERED NOFO

## Annual Continuum of Care Competition

- All renewal projects were prioritized for funding in Tier 1
- Submitted two new bonus projects
  - Pathways to Housing DC: Scattered Site- Permanent Supportive Housing Program for individuals enrolled in Assertive Community Treatment services
  - National Center for Children and Families: Youth Transitional Housing – Rapid Rehousing Program

## Unsheltered Supplemental NOFO

- Expansion of Corporate Lease Permanent Supportive Housing, Critical Time Intervention Specialist, Enhanced Access to Behavioral and Somatic Health Care
- Planning Grant to evaluate current outreach strategy and recommend improvements
- HHS project to hire a permanent Outreach Systems Coordinator position

Current Strategic Plan to End Homelessness expires in December 2023

To prepare for revisions to the plan, the Strategy and Planning Committee is embarking on an environmental scan as the pandemic has significantly altered our reality

Current strategies outlined in the Plan will remain but the action plan will be updated.

- Reduce Racial Disparities Across the System
- Build and Support Strong and Adaptable Programs
- Build and Support Affordable Housing Solutions within the Continuum of Care
- Coordinate Effectively Across other Systems of Care
- Increase and Diversify Funding
- Educate and Advocate for Change

## Strategic Plan Update Market Scan: What has changed since the last strategic plan was written (January 2020)?

Examining the general environment involves gaining an understanding of key factors and trends in broader society. PESTEL analysis is a popular framework for organizing these factors and trends and isolating how they influence industries and the firms within them. Below we describe each of the six dimensions associated with PESTEL analysis: political, economic, social, technological, environmental, and legal.

P



Political factors include elements such as tax policies, changes in trade restrictions and tariffs, and the stability of governments.

E



Economic factors include elements such as interest rates, inflation rates, gross domestic product, unemployment rates, levels of disposable income, and the general growth or decline of the economy.

S



Social factors include trends in demographics such as population size, age, and ethnic mix, as well as cultural trends such as attitudes toward obesity and consumer activism.

T



Technological factors include, for example, changes in the rate of new product development, increases in automation, and advancements in service industry delivery.

E



Environmental factors include, for example, natural disasters and weather patterns.

L



Legal factors include laws involving issues such as employment, health and safety, discrimination, and antitrust.

### Local Scan Topics

- Politics/ Election impact – County, HUD
- CE Priorities
- Policy changes – DHHS, Housing, other
- New State Leadership

- Local Economy
- Cost of housing, rent increases
- Availability of affordable housing
- Inflation

- Demographic changes overall
- Trends in homeless population
- Strain from the pandemic on workforce
- Attitudes toward homelessness
- Increase in migrant population and households ineligible to work

- Changes in data reporting and availability
- Changes in data collection
- Change in assessment tool
- Technological advances to support in home health care

- Communicable Diseases
- Climate Change?

- Decriminalization of homelessness and mental health
- Tenant protections
- Other legislation at the local, state and federal level that impact homelessness and housing stability



# Built For Zero.

COMMUNITY SOLUTIONS







# COMMUNITY SOLUTIONS

**works for a lasting end to homelessness that leaves no one behind.** We envision a more equitable society where homelessness is never inevitable, inescapable, or a way of life.

# HOMELESSNESS IS **SOLVABLE**

Communities in the Built for Zero movement are proving it.

**105**

communities are  
participating  
in Built for Zero

**147,000+**

individuals housed  
by Built for Zero  
communities since 2015

**14**

communities have  
functionally ended  
homelessness for a  
population

**64**

communities have achieved  
quality real-time data

**42**

communities have achieved  
a measurable reduction





# Montgomery County As a National Leader

- Ended veteran homelessness in 2015
- Committed to address racial inequities in homelessness response system
- Continues to increase housing placements and decrease incrowd
- Nimble and able to pilot and scale things quickly
- Committed to continuous improvement of system
- Strong capacity for data driven decision making
- Strong partnerships and collaboration across systems

# The Path to Zero

- Using the definitions as a framework and baseline data as a foundation, Built for Zero will partner with critical stakeholders in Montgomery County to launch a planning process to determine a shared strategy and path forward for ending all homelessness by 2026.
- Montgomery County is one of **4 communities** in the country currently invited to engaged in this work.

# The Path to Zero

## **This process entails:**

- Bringing together all the different stakeholders in Montgomery County who care about ending homelessness, including: providers & staff, adjacent systems (e.g. education, DV, behavioral health), people with lived experience of homelessness, advocates, elected officials and key other community stakeholders
- Convening these stakeholders to learn about and commit to shared definitions for ending youth, family, single adult and all homelessness
- Looking at real-time, system-wide data to support goal setting and improvement work with this broader stakeholder group
- Setting a goal to end homelessness for everyone within the next four years
- Starting to create a plan to get there

# Tools & Support for the Path to Zero Process

We've developed the following tools & interventions to support this process:

## Tools:

- All Populations By-Name List Scorecard
- Other tools to support definitions

## Support:

- Facilitation & plans support for onsite stakeholder engagement around data, definitions and goal setting
- Data coaching and technical assistance to support system-wide reporting
- ZfA cohort facilitated peer learning (starting in the spring)

# End State Measures:

Process & Overview



# Definition Design Process

**An iterative approach focused on consultation and testing with community stakeholders:**

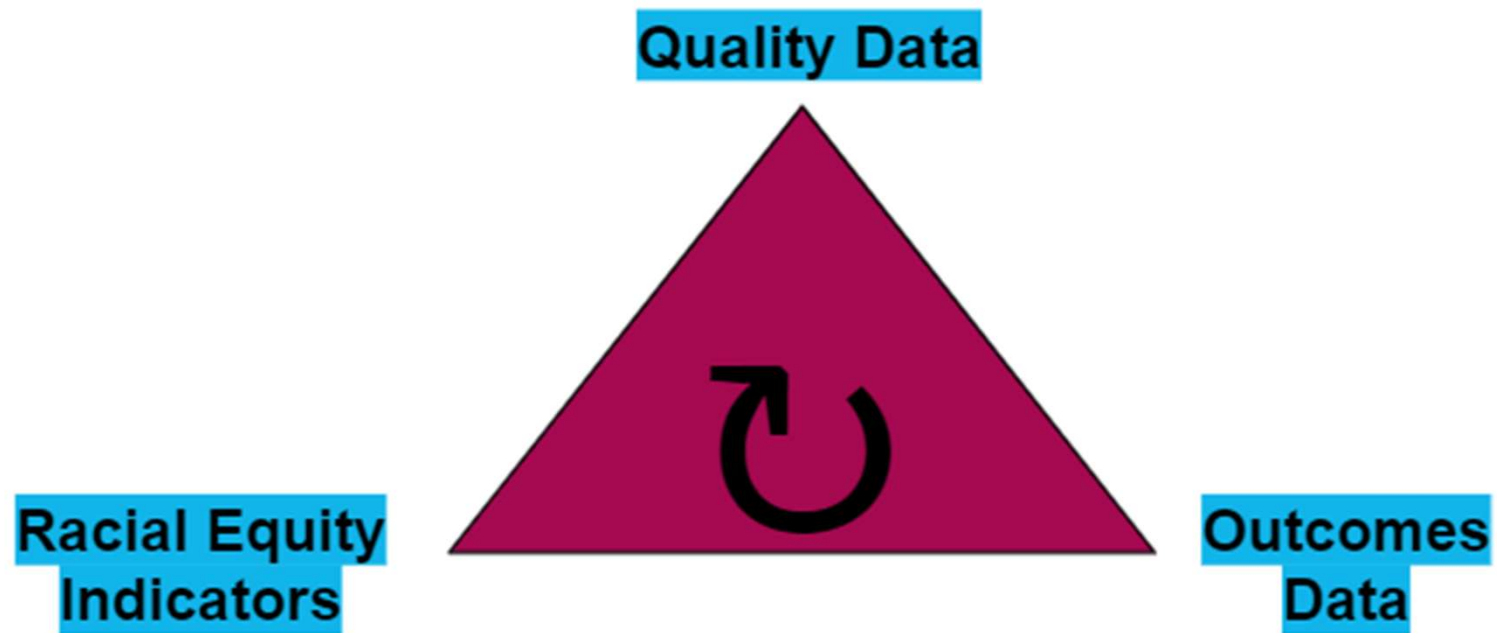
- Discussed with diverse BfZ communities what it would take to prove to residents that homelessness had been solved and shared draft measures.
- Held focus group with people with lived experience of homelessness to ask what it would take to prove to them that homelessness had been solved.
- Discussion with federal partners
- Soft launch, co-design and implementation

# Definition Design Process

## Co-architects:

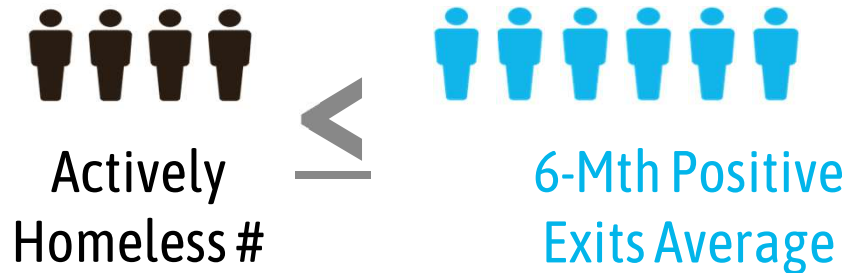
- *Gulf Coast*
- *Rockford*
- *Abilene*
- *Arlington*
- *DC*
- *Spokane*
- *Maricopa Regional*
- *Montgomery County*
- *Charlotte*
- *Nassau County*
- *Central VA*
- *Jacksonville*
- *Ft. Worth*
- *San Diego*

# FZ Definitions



# System Outcomes

For each population:



- *Single Adults:* Unaccompanied individuals 18 years old and over
- *Youth:* Unaccompanied individuals under 25 years old (includes pregnant & parenting youth)
- *Families:* Families with minor children

# System Outcomes

## For ending all homelessness:

- *For all individuals experiencing homelessness as defined by the All Single Adults, Youth, and Families definitions:*
- **Rare-** The community has met and sustained the Functional Zero definitions above for youth, families, single adults, veterans and chronically homelessness individuals.
- **Brief-** 45 days or less on average length of time from ID to Move-In.
- **Non-recurring-** Of all exits to permanent housing, no more than 5% of positive exits result in a return to the homelessness system within 2 years of exit from the homeless system (e.g. subsidy or services).



# Race Equity Indicators

Communities will be asked to demonstrate **four key indicators** of a racially equitable homeless response system:

INDICATORS

## SYSTEM DECISION- MAKING POWER

Black, Indigenous, and People of Color (BIPOC) at all levels of the homeless response system have decision-making power to influence the design of the system.

## LIVED EXPERIENCE

BIPOC receiving services from the homeless response system have experiences that preserve their dignity and have their needs met in a timely manner.

## QUALITY DATA

All people experiencing homelessness have access to the system and are known by name in real-time. Communities accurately collect data around race and ethnicity.

## SYSTEM OUTCOMES

Communities close all racial/ethnic disproportionality in housing placements, returns to homelessness, and the average length of time from identification to housing by improving outcomes for BIPOC who experience homelessness.

# Other metrics & key terms defined

- Positive exits
- Unsafely housed individuals and families
- Unstably housed youth and families
- Time-limited housing for youth and families
- Adjacent systems

# Homeless

MONTGOMERY COUNTY PROGRESS ON ENDING  
HOMELESSNESS BY POPULATION TYPE

# MONTGOMERY COUNTY POPULATION STATUS

Veterans

9

HH w/minor  
Children

72

Chronic

24

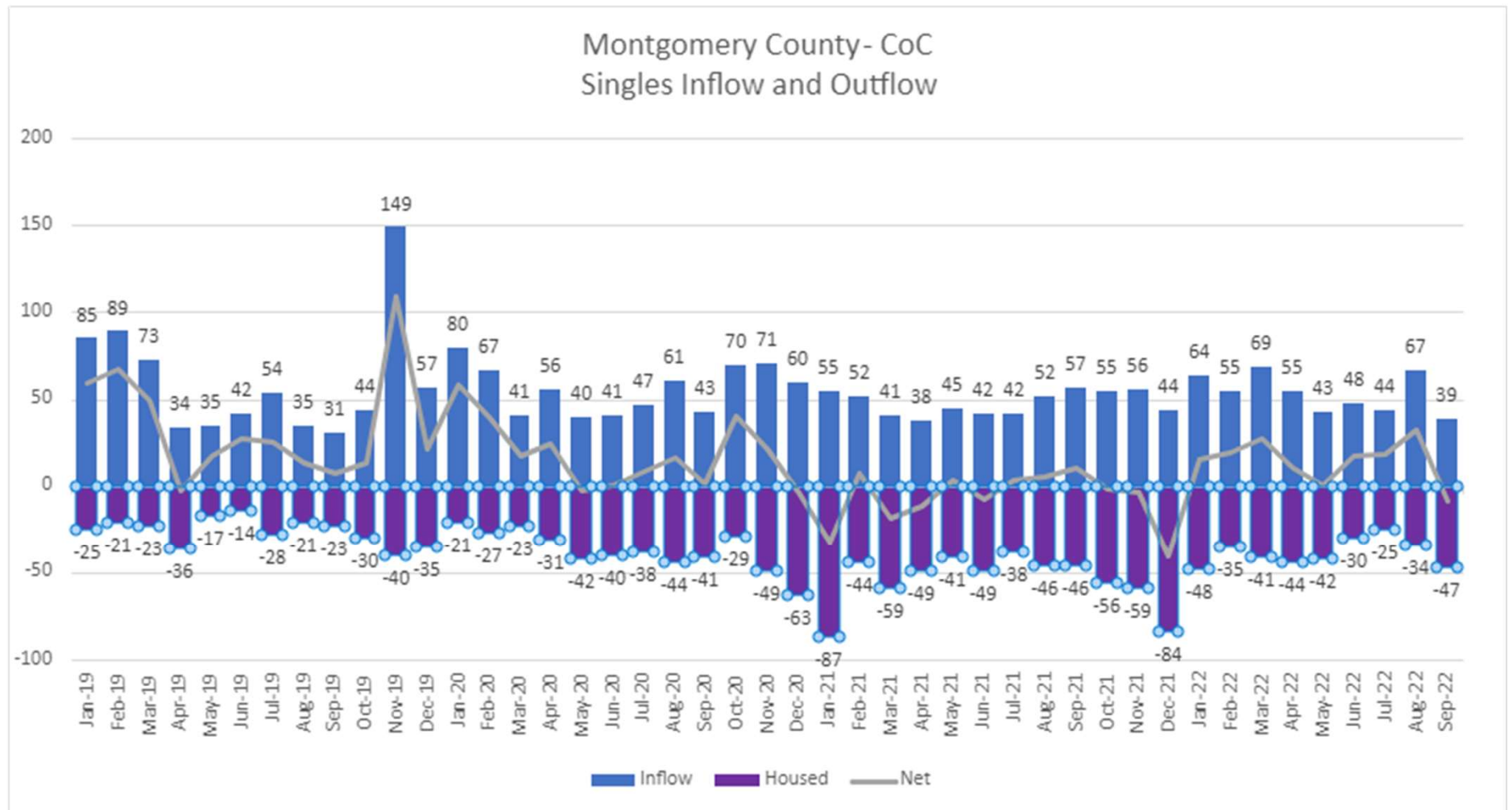
Youth

26

Seniors 62+

16

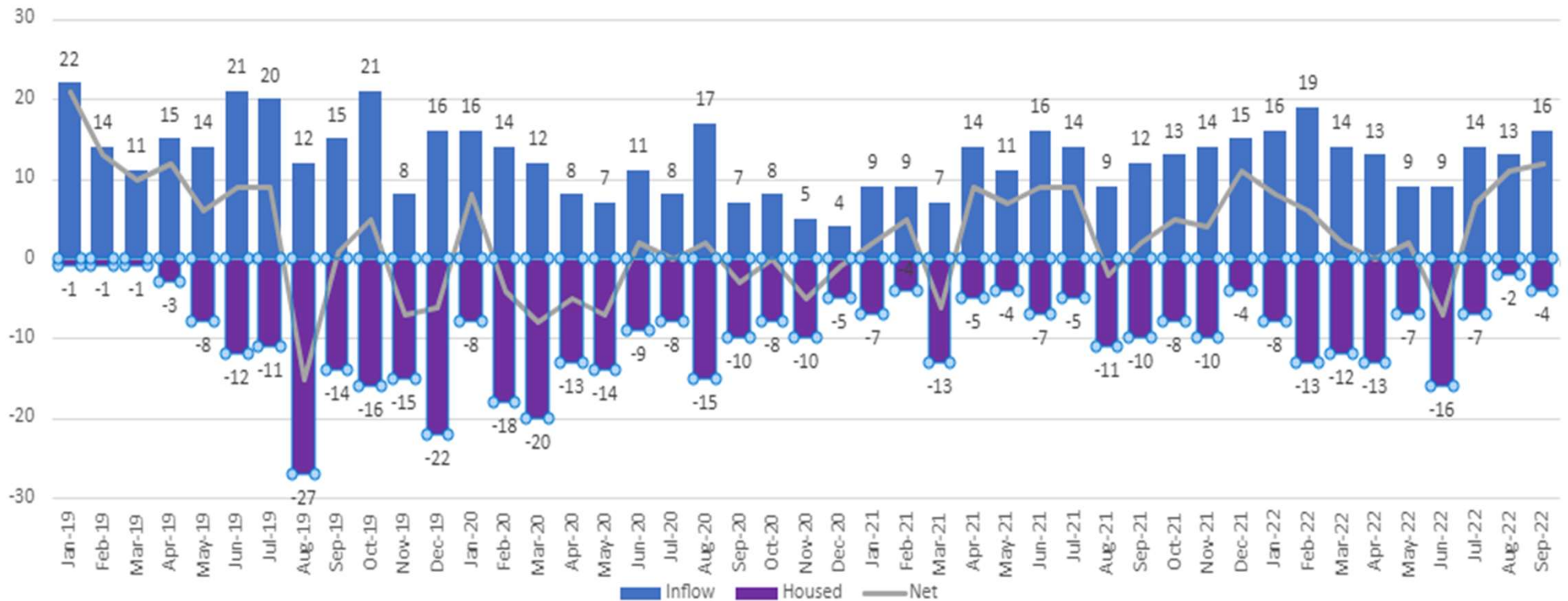
# ADULT ONLY SYSTEM FLOW





# FAMILIES WITH CHILDREN SYSTEM FLOW

Montgomery County- CoC  
Family Inflow and Outflow

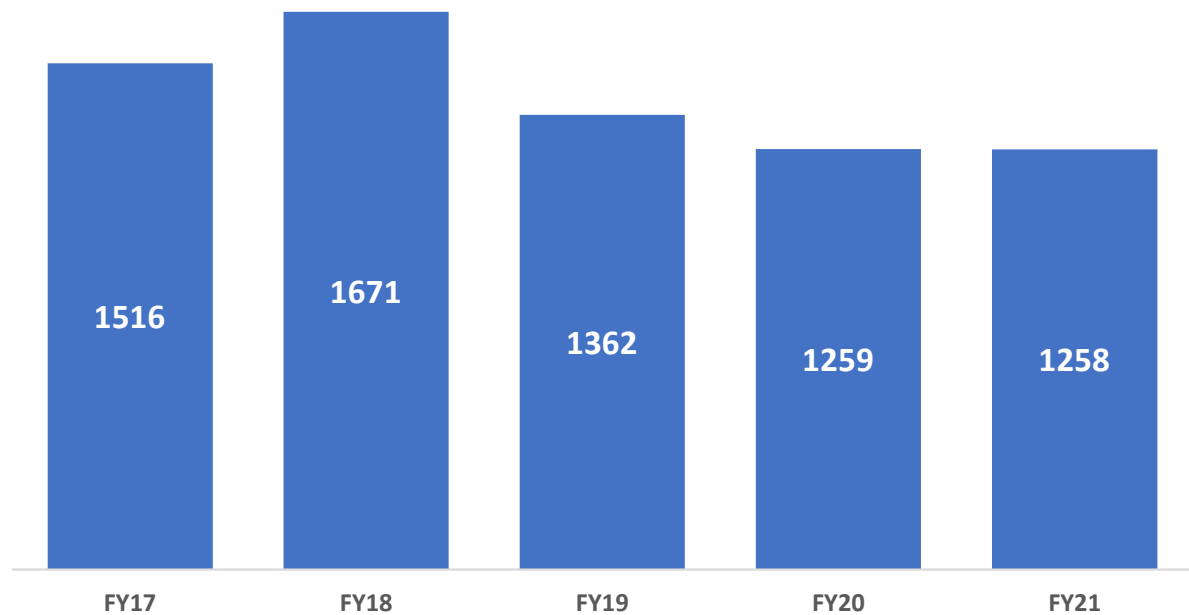


# System Performance



Making  
Homeless  
RARE

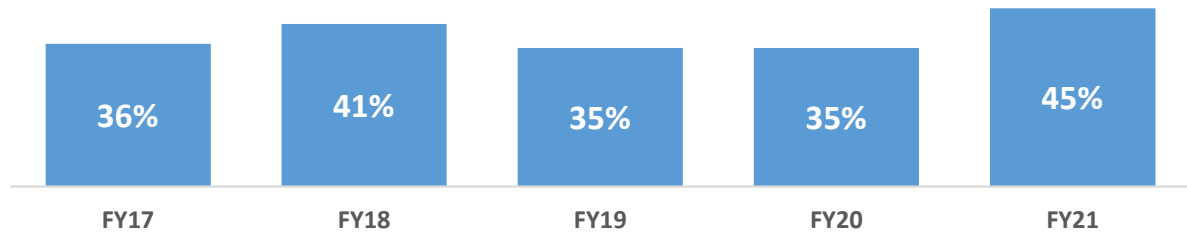
# of People Entering Homelessness for the First Time



**5-Year Trend: 17% Decrease**

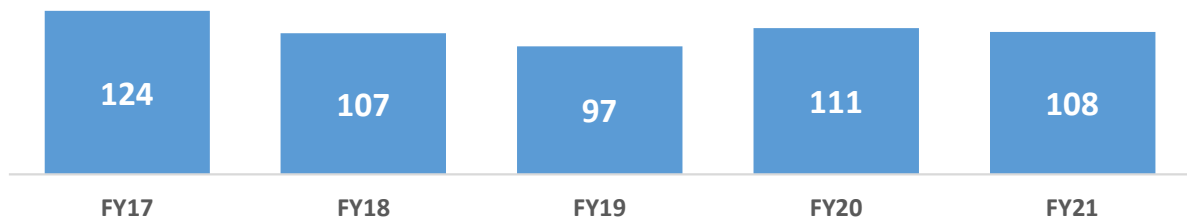
# Making Homeless BRIEF

**% of Exits to Permanent Housing**



**5-Year Trend: 25% Increase**

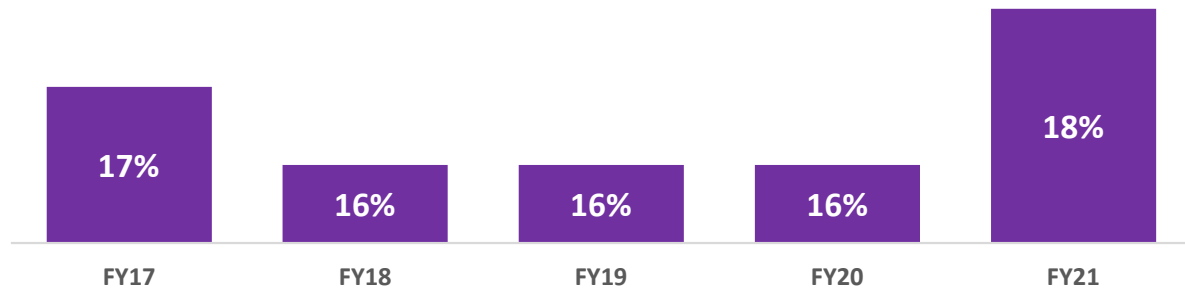
**Length of Time Homeless in Days**



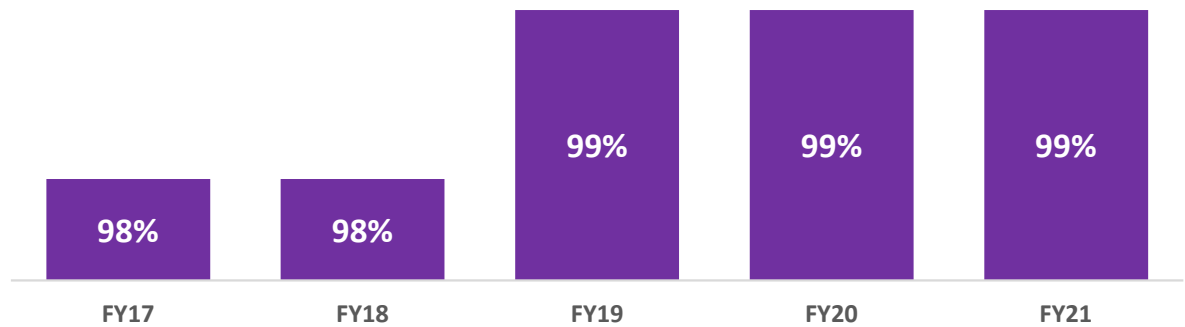
**5-Year Trend: 13% Decrease**

Making  
Homelessness  
ONE-TIME  
ONLY

**% of Returns to Homelessness After 24 Months**



**% Retaining Permanent Housing (excluding RRH)**





An abstract composition of various colorful geometric blocks, including rectangles, triangles, and trapezoids, arranged in a cluster. The blocks are in shades of yellow, orange, purple, blue, green, and pink. The text "MORE DATA" is overlaid in the center in a bold, black, sans-serif font. The background is a solid light orange color.

**MORE DATA**

# QUESTIONS?

