



MONTGOMERY COUNTY

Project 501209

MD 355 Crossing (BRAC)

Presented by Montgomery County Department of Transportation

Holger Serrano, Deputy Division Chief

Mark Aebig, Assistant Chief, Construction Section



Industry Information Meeting
April 19, 2013

Today's Presentation

- ❑ Welcome and Purpose of this Meeting
- ❑ Project History and Purpose
- ❑ Project Features
- ❑ Project Stakeholders
- ❑ Project Funding Sources
- ❑ Procurement Process Overview
- ❑ Schedule



Montgomery County

April 19, 2013

Slide # 2

Welcome!

- The purpose of today's meeting is to
 - ▣ Review the project
 - ▣ Explain the procurement process and schedule
 - ▣ Answer questions
- Today's Presenters
 - ▣ Holger Serrano, Deputy Division Chief
 - ▣ Mark Aebig, Assistant Chief, Construction



Section
Montgomery County

April 19, 2013

Slide # 3

Project Team

□ **Montgomery County DOT**

- Holger Serrano
- Mark Aebig
- Uzair Asadullah
- Brian Copley
- Jim Lutz
- Todd Collins

□ **URS Corporation**

- Steve Matty
- Janie Tiedeman
- Michael Mezzetti
- Mike Jaeger



Montgomery County

April 19, 2013

Slide # 4

Project History

- ❑ 2005 DoD BRAC Commission recommendation to combine Walter Reed Army Medical Center and National Naval Medical Center is approved by Congress
- ❑ 2011 Montgomery County completes its NEPA planning study to safely accommodate increases in staff, patients, and visitors
- ❑ Alternatives studied and dropped include:
 - ❑ Pedestrian Bridge because of adverse effect on historic viewsheds and driver sight distance
 - ❑ Grade Separated Interchange because of impacts and costs



Jug Handle Intersections because of traffic operational impacts

Montgomery County

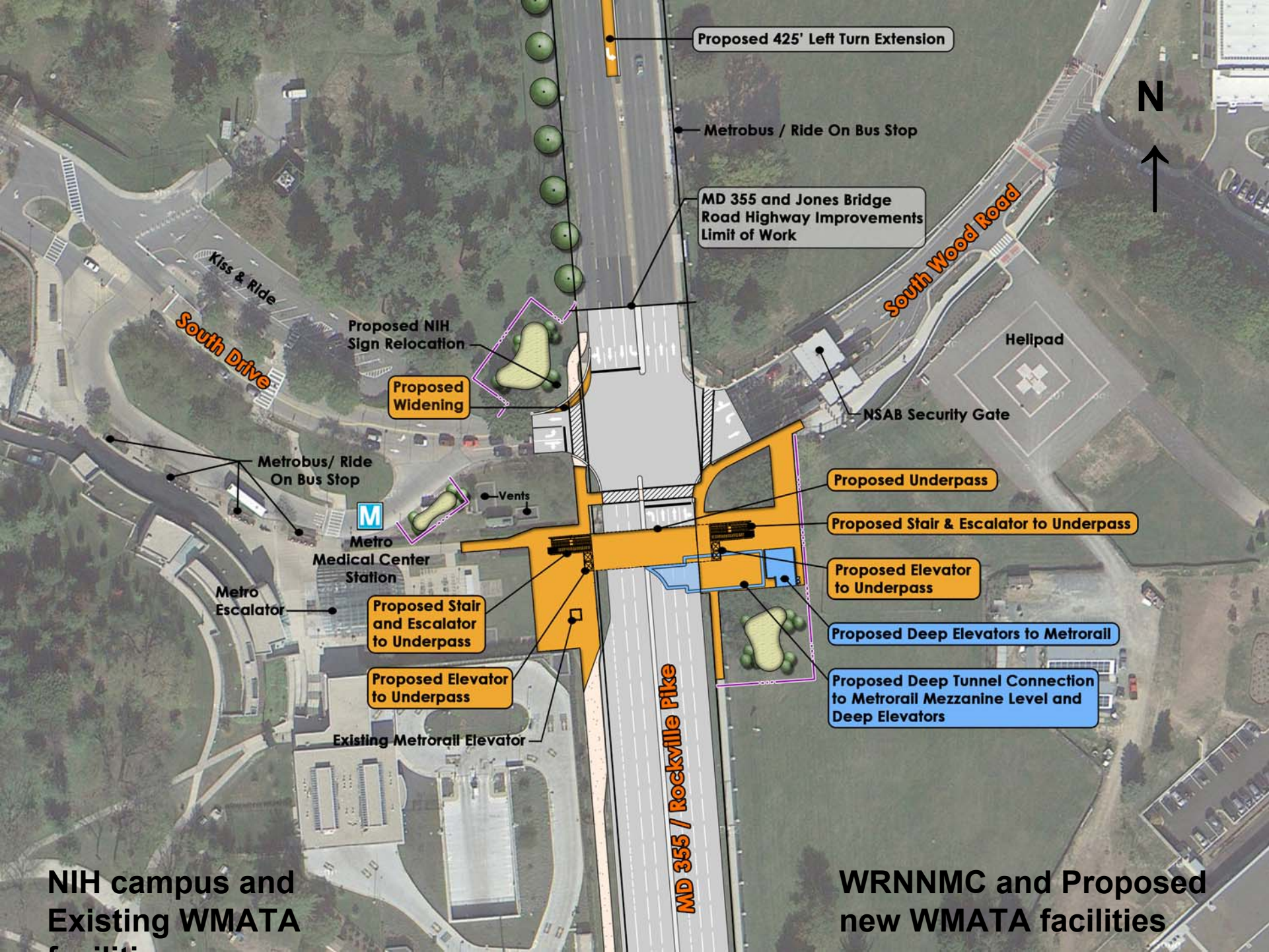
April 19, 2013

Slide # 5

Project Purpose

- MD 355 Crossing (BRAC):
 - ▣ Enhance / improve access to mass transit facilities
 - ▣ Improve the mobility and safety of motorists, pedestrians, and bicyclists crossing MD 355/Rockville Pike
- MD 355 / Jones Bridge Road:
 - ▣ Improve pedestrian safety and traffic operations through the intersection during peak hours of operation





Proposed 425' Left Turn Extension

Metrobus / Ride On Bus Stop

MD 355 and Jones Bridge Road Highway Improvements Limit of Work

South Wood Road

N
↑

Kiss & Ride
South Drive

Proposed NIH Sign Relocation

Proposed Widening

Metrobus / Ride On Bus Stop

M

Metro Medical Center Station

Metro Escalator

Vents

Proposed Stair and Escalator to Underpass

Proposed Elevator to Underpass

Existing Metrorail Elevator

Proposed Underpass

Proposed Stair & Escalator to Underpass

Proposed Elevator to Underpass

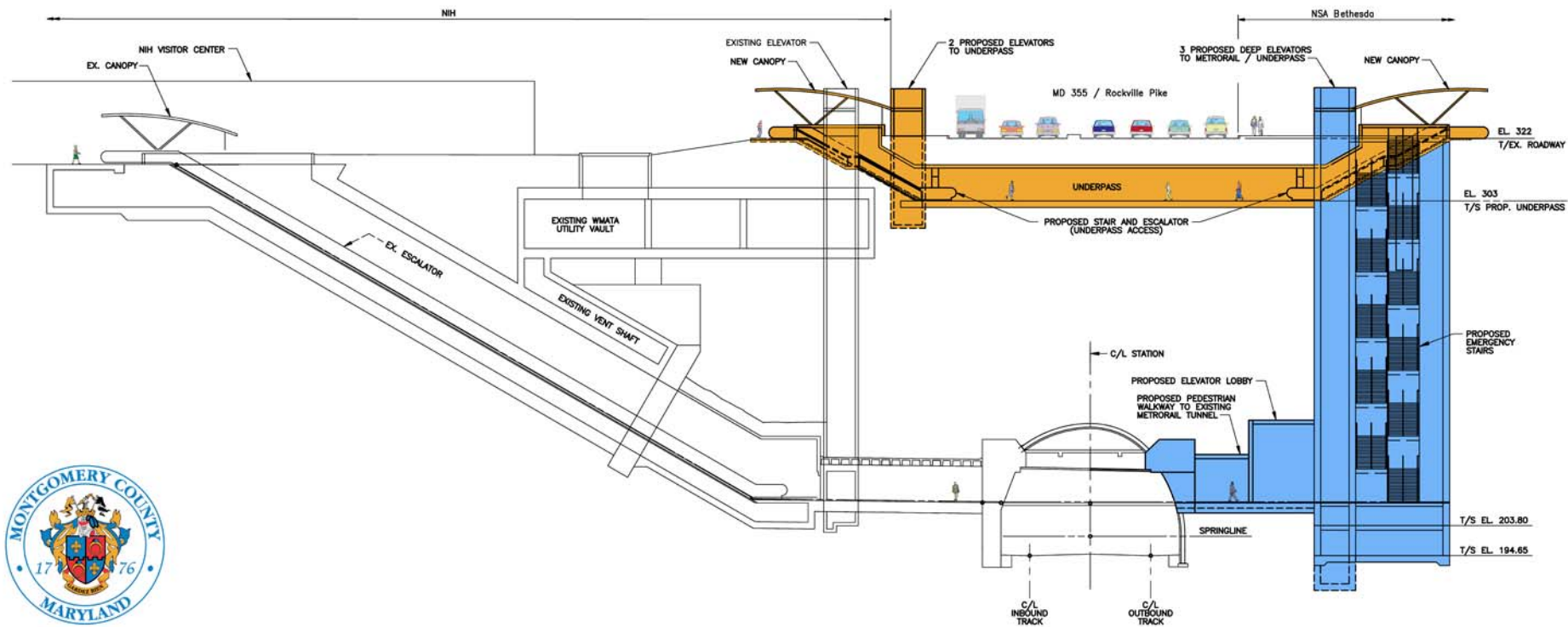
Proposed Deep Elevators to Metrorail

Proposed Deep Tunnel Connection to Metrorail Mezzanine Level and Deep Elevators

MD 355 / Rockville Pike

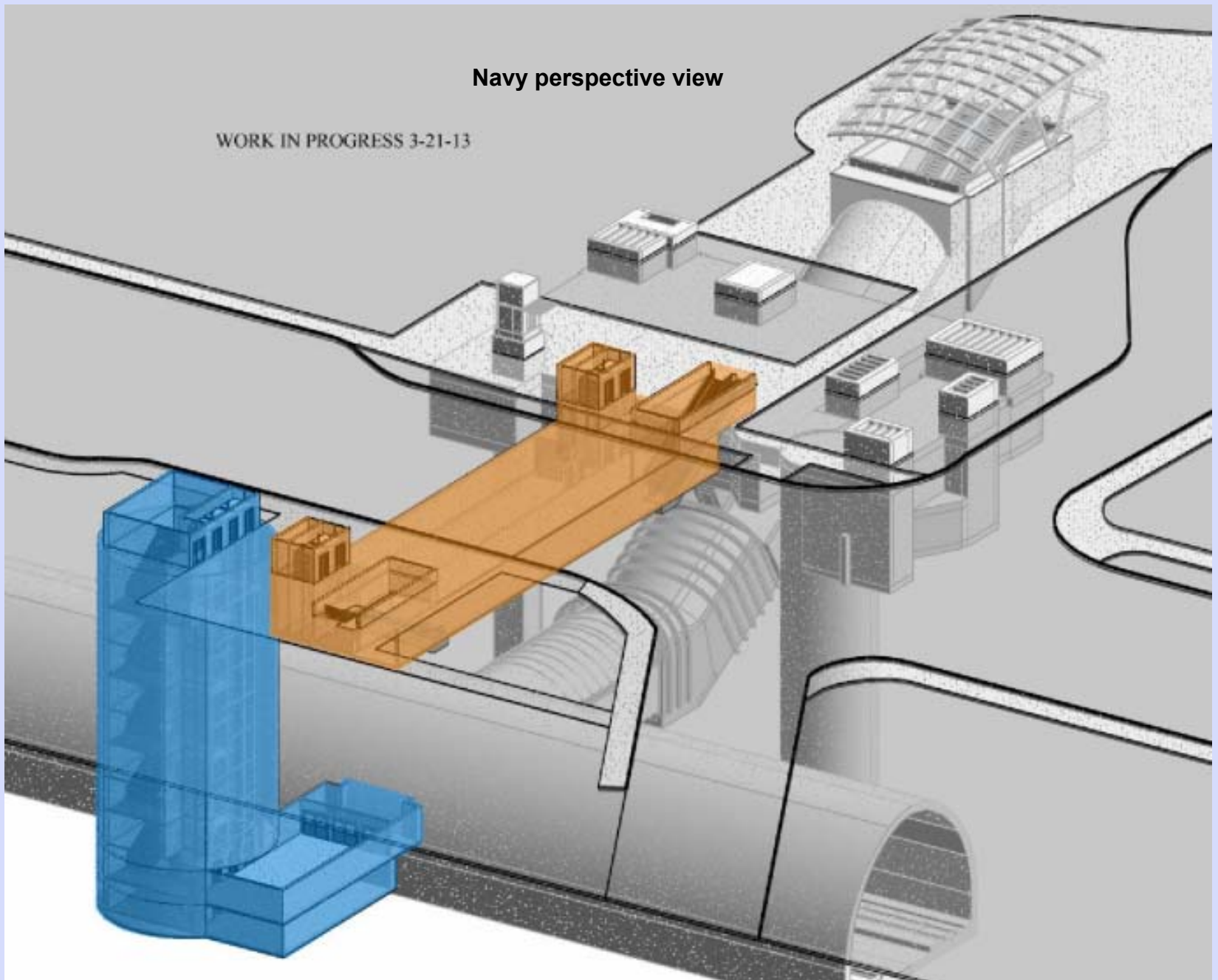
NIH campus and Existing WMATA facilities

WRNNMC and Proposed new WMATA facilities



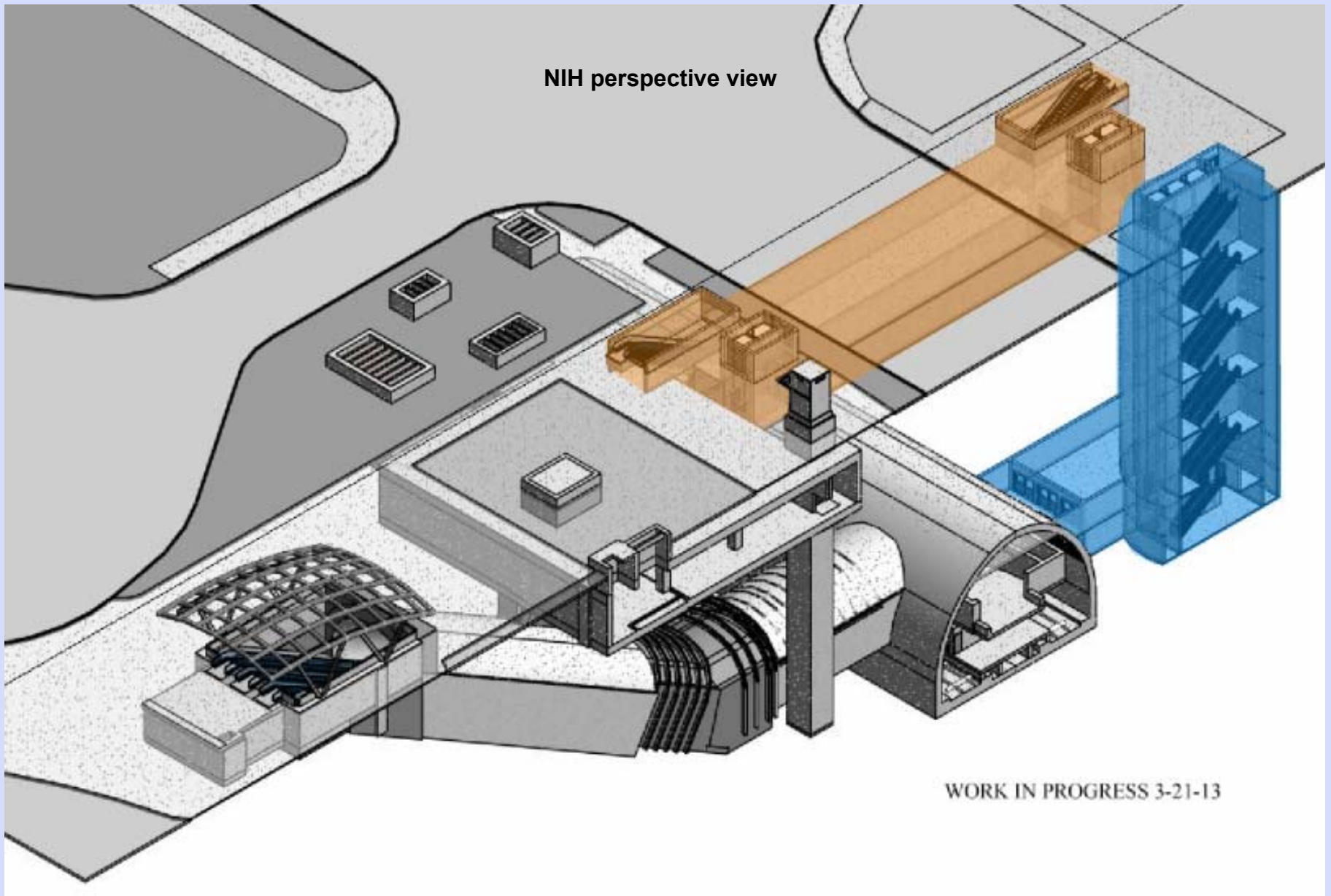
Navy perspective view

WORK IN PROGRESS 3-21-13



Rendering developed courtesy of URS Corporation

NIH perspective view



WORK IN PROGRESS 3-21-13

Navy perspective view

WORK IN PROGRESS 3-21-13

MD 355 / Jones Bridge Road/Center Drive



Project Stakeholders

- Montgomery County Government (MCG)
 - ▣ Project Owner
 - ▣ Will maintain shallow elevators, escalators and shallow underpass
- Washington Metropolitan Area Transit Authority (WMATA)
 - ▣ Will own, operate and maintain deep high speed elevators and deep horizontal tunnel into Medical Center Metro Station



WMATA Criteria and Standards

This project will be designed and constructed in compliance with WMATA criteria and standards

- ❑ WMATA Design Standards, Release 9
- ❑ Adjacent Construction Manual
- ❑ Safety and Security Certification Program Plan, March 2012



Project Stakeholders

- ❑ Maryland State Highway Administration (MSHA)
 - ❑ Will maintain MD 355 after construction is complete
- ❑ Naval Support Activity Bethesda (NSAB)
- ❑ National Institutes of Health (NIH)
- ❑ Federal Highway Administration (FHWA)



Utility Companies / Owners

- Pepco
- Verizon
- Washington Gas
- WSSC
- Comcast
- Zayo
- Verizon Business (formerly MCI)
- Express-Tek (formerly MCI)
- SHA (signal interconnections)
- Various (NSAB, NIH, WMATA feeders / connections)
- Others TBD



Project Funding Sources

- The Project is 100% Grant funded through two Department of Defense Granting Agencies
- MD 355 Crossing (BRAC)
 - ▣ DoD Army Defense Access Roads (DAR) and Office of Economic Adjustment (OEA)
- MD 355/Jones Bridge Road
 - ▣ DoD Office of Economic Adjustment (OEA)



Montgomery County

April 19, 2013

Slide # 20

Procurement Process

Best Value Method Two-Step Selection Process (Competitive Sealed Proposals)

First Step (REOI)

- Issue Request for Expressions Of Interest (REOI)
- Receive and Evaluate Proposals (Statements of Qualification)
- Recommend Reduced Candidate List (RCL – up



to 3) **Montgomery County**

April 19, 2013

Slide # 21

Procurement Process

Second Step (RFP)

- Issue Request For Proposals (RFP) to RCLs for Technical and Price Proposals
- Conduct Alternative Technical Concepts phase
- Receive & Evaluate Proposals
- Make Recommendation to Award Contract
- Issue Stipend to Unsuccessful RCL's



Procurement Process

- Davis-Bacon Act Wage Rates will apply
- Disadvantaged Business Enterprise Performance Plan will be a part of this project



REOI Technical Evaluation

Factors

1. Team Experience / Qualifications and Past Performance
 - ▣ Construction Firm Past Experience (3 projects)
 - ▣ Design Firm Past Experience (3 projects)
 - ▣ Construction and Design Key Staff
2. Team Organization
 - ▣ Organizational Structure
 - ▣ Organizational Chart



REOI Technical Evaluation Factors

**Lead Design and Construction Firm
Experience
and Qualifications, in order of
importance:**

1. Design-Build Project Coordinator
2. Project Manager for Construction
3. Project Design Manager
4. Tunneling Engineer
5. Construction Manager
6. Architect
7. Traffic Engineer



Montgomery County

April 19, 2013

Slide # 25

Schedule – Procurement Activities

- ❑ Issue REOI: May 2013
- ❑ REOI Contractor Meeting: June 2013
- ❑ SOQ Submittal to the County: June 2013
- ❑ Reduced candidate List (RCL): September 2013
- ❑ Issue Draft RFP: October 2013
- ❑ Selection of Successful Bidder: October 2014
- ❑ Start Design Build Process: October 2014
- ❑ Complete Construction: September 2017



Contact Information

Montgomery County Department of Transportation
Division of Transportation Engineering
100 Edison Park Drive, 4th Floor
Gaithersburg, Maryland 20878

240-777-7220 (main)

240-777-7215 (Mark Aebig)

mcdot.dte.construction@montgomerycountymd.gov



Montgomery County

April 19, 2013

Slide # 27

