

PS COMMITTEE #1  
December 7, 2015

**MEMORANDUM**

December 3, 2015

TO: Public Safety Committee  
FROM: Susan J. Farag, Legislative Analyst *SJF*  
SUBJECT: Update: Crime Statistics

Today the Committee will receive an update on current crime statistics in the County. Those expected to brief the Committee include:

Chief Thomas Manager, Montgomery County Police Department (MCPD)  
Assistant Chief Darryl McSwain, MCPD  
Captain Tom Didone, MCPD

**OVERVIEW**

The Committee was last briefed on crime statistics in March 2015. At that time, data showed an overall crime increase of 6.3% from 2013 to 2014. This represented the first annual increase in several years. Prior to 2014, total crimes had decreased by about 19%. While crime did increase in 2014, it still was the second lowest crime rate for the County over the past 10 years, and 2013 had been the lowest of all.

**CRIME DATA AND TRENDS FOR 2015, YEAR-TO-DATE**

MCPD's PowerPoint presentation has been included on © 1-28, and contains detailed information about the latest trends. Based on current data that the Police Department has provided, total Part I crimes are down slightly (-1.2%) compared to the same time period in 2014. Part I crimes are the more serious offenses that occur regularly, and are more likely to be reported to law enforcement. Within the Part I crime categories, however, there have been some significant increases. The number of homicides has increased from 16 in the first three quarters of 2014 to 24 so far this year. Rape has increased from 121 to 236. Robbery has increased slightly from 548 to 557, and aggravated assault has increased from 757 to 866. The one significant decrease is burglary, which dropped from 2,151 to 1,703 so far this year. *Has the*

**Police Department identified any underlying reason for the increases in homicides and rapes? Are these domestic in nature? What can the reduction in burglaries be attributed to?**

**Part I Crime Trends by District:** The following chart shows trends in Part I offenses through November 23, 2015 compared to the same time period last year (see ©13-18 for District Maps).

<b>Police District</b>	<b>Through 11/23/2014</b>	<b>Through 11/23/2015</b>	<b>Percentage Change</b>
1D Rockville	1,892	1,850	-2.2%
2D Bethesda	2,834	2,654	-6.4%
3D Silver Spring	3,745	3,370	-10%
4D Wheaton	2,894	2,886	-0.3%
5D Germantown	1,716	1,892	10.3%
6D Gaithersburg	2,452	2,732	11.4%

**Closure Rates:** MCPD advises that its closure rates in 2105 are higher than the 2014 average closure rate in metropolitan counties. It currently reports a 79.2% closure rate on homicides, 80.5% on rapes, 42.4% on robberies, 65.7% on aggravated assaults, and 29.7% on burglaries. *The Committee may wish to ask how closure rates compare to prior years within the department and whether the addition of detective positions over the past several years has helped increase closure rates.*

**Mental Health-Related Calls for Service:** Calls for service that involve some type of mental health issue have been steadily increasing since 2011 (see © 21-22). The number of calls has increased 12.4% from 2014 to 2015 (year-to-date).

**Recovered Firearms:** The Police Department advises it has recovered 2,597 guns between 2012 and 2014. It has recovered 733 of them this year. The chart on © 26 illustrates the nature of the reasons for recovery. The primary reason is domestic violence, which accounted for 162 cases this year. MCPD indicates that it has flagged four Montgomery County residents to prevent them from purchasing firearms. Without these flags, these individuals would pass the background check and legally be able to buy firearms. *The Committee may wish to ask what leads to flagging an individual's record for this purpose.*

**Gang Activity:** There have been several recent media reports regarding gang activity in Montgomery County and the greater Washington, DC area. The chart on ©23 identifies gang activity throughout the County. *The Committee may wish to ask if this represents an increase or decrease in the number of gang-related incidents. Are there any trends in the types of crimes being committed?*

# Montgomery County Public Safety Update



December 7, 2015

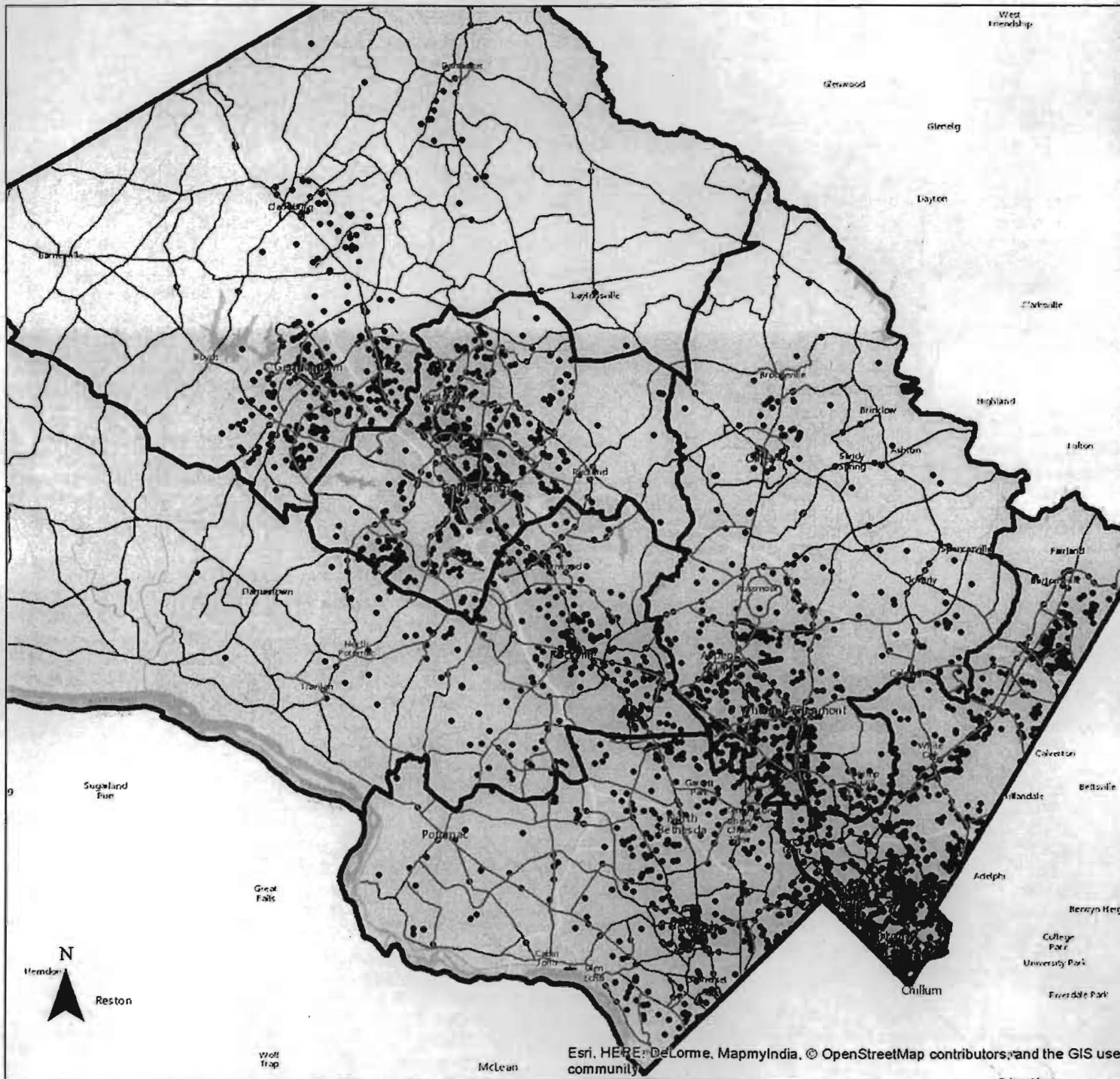
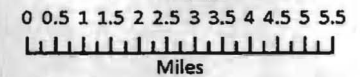
# Montgomery County, YTD 2015

- **Homicide: Increase of 50.0%**  
**(16 v 24)**
- **Rape: Increase of 95.0%**  
**(121 v 236)**
- **Robbery: Increase of 1.6%**  
**(548 v 557)**
- **Aggravated Assault: Increase of 14.4%**  
**(757 v 866)**
- **Burglary: Decrease of 20.7%**  
**(2,151 v 1,703)**

	2014 # of Incidents	2015 # of Incidents	% Diff
Homicide	16	24	50.0%
Rape	121	236	95.0%
Forcible	103	218	111.7%
Attempt - Force	18	18	-
Robbery	548	557	1.6%
Non-Commercial	461	477	1.5%
Commercial	87	80	(8.0%)
Agg. Assault	757	866	14.4%
Burglary	2,151	1,703	(20.8%)
Residential	1,709	1,395	(18.4%)
Commercial	403	279	(30.8%)
School	39	29	(25.6%)
Larceny	11,846	11,850	-
Shoplifting	2,318	2,402	3.6%
Yeh Recd Theft	4,440	4,849	9.2%
From Burgs	2,260	1,975	(12.6%)
All Others	2,828	2,824	(7.2%)
Auto Theft	718	735	2.4%
Part I Total	16,157	15,971	(1.2%)
Person	894	1,124	26.0%
Property	15,263	14,845	(2.7%)
Minor Assault	2,761	3,020	9.4%
Arson	41	45	9.8%
Vandalism	2,670	2,481	(7.1%)
Weapons	240	240	-
Narcotic Drug Laws	4,092	3,790	(7.4%)
Sale/Manufacture	533	483	(9.4%)
Possession/Use	3,599	3,307	(7.1%)
Family Offense	251	124	(50.6%)
Juvenile	513	620	20.9%
Disorderly Conduct	865	952	10.1%
All Other Part II Criminal	6,275	6,762	7.8%
DUI	2,890	2,976	3.0%
All Other Part II Noncriminal	8,984	9,177	2.1%
PART II TOTAL	29,582	30,187	2.0%
TOTAL PART I AND II	45,739	46,158	.9%
Assaults on Police Officer	232	232	-

2

# Part I Offenses 2015 YTD



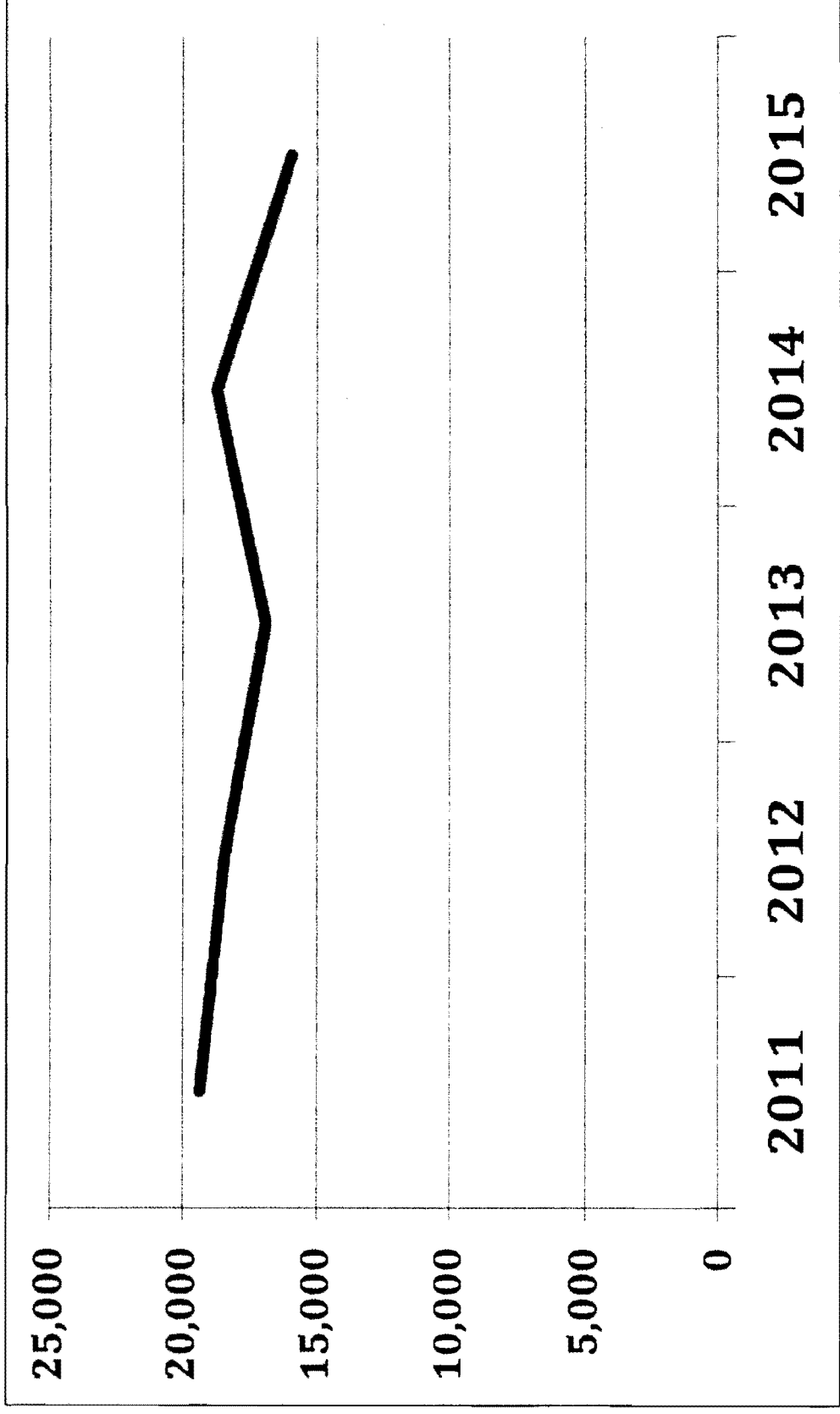
- Police Districts
- Part I Offenses

Montgomery County Police Department  
Information Management & Technology Division  
02/09/2015

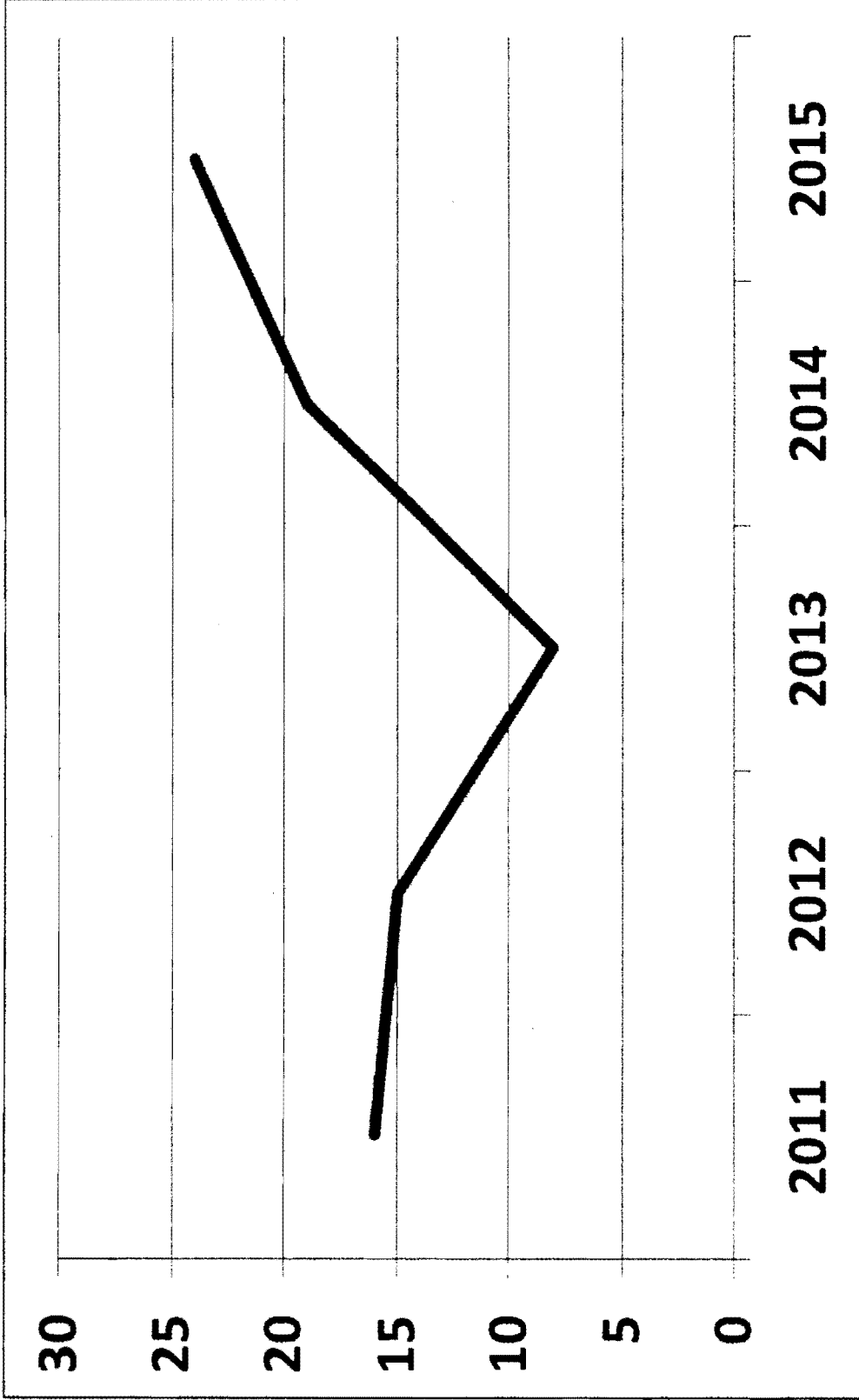
Esri, HERE, DeLorme, MapmyIndia, © OpenStreetMap contributors, and the GIS user community

3

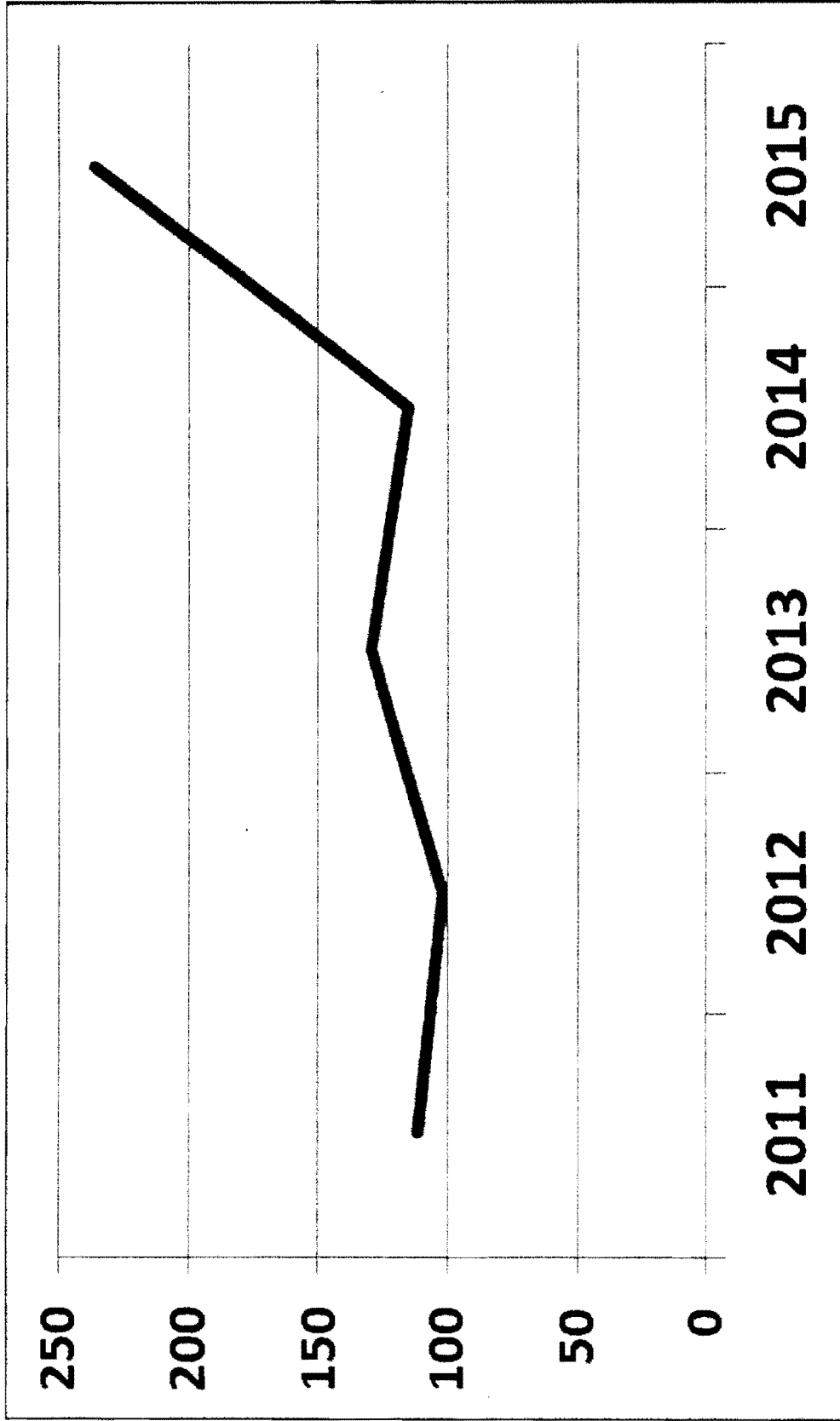
# Part I Offenses, 2011-YTD 2015



# Homicide, 2011-YTD 2015



# Rape, 2011-YTD 2015



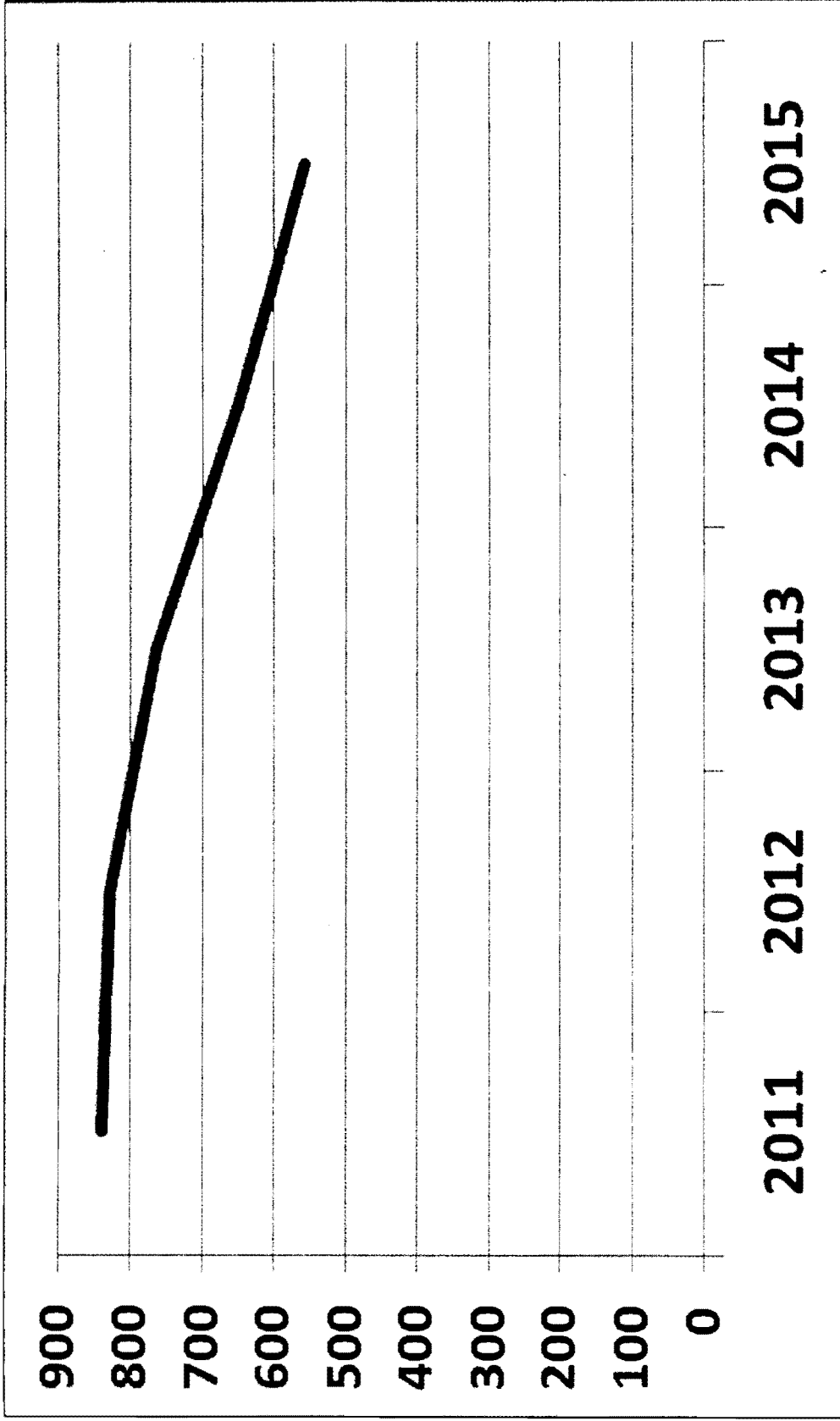


# Rape, Sex Offenses, Child Abuse

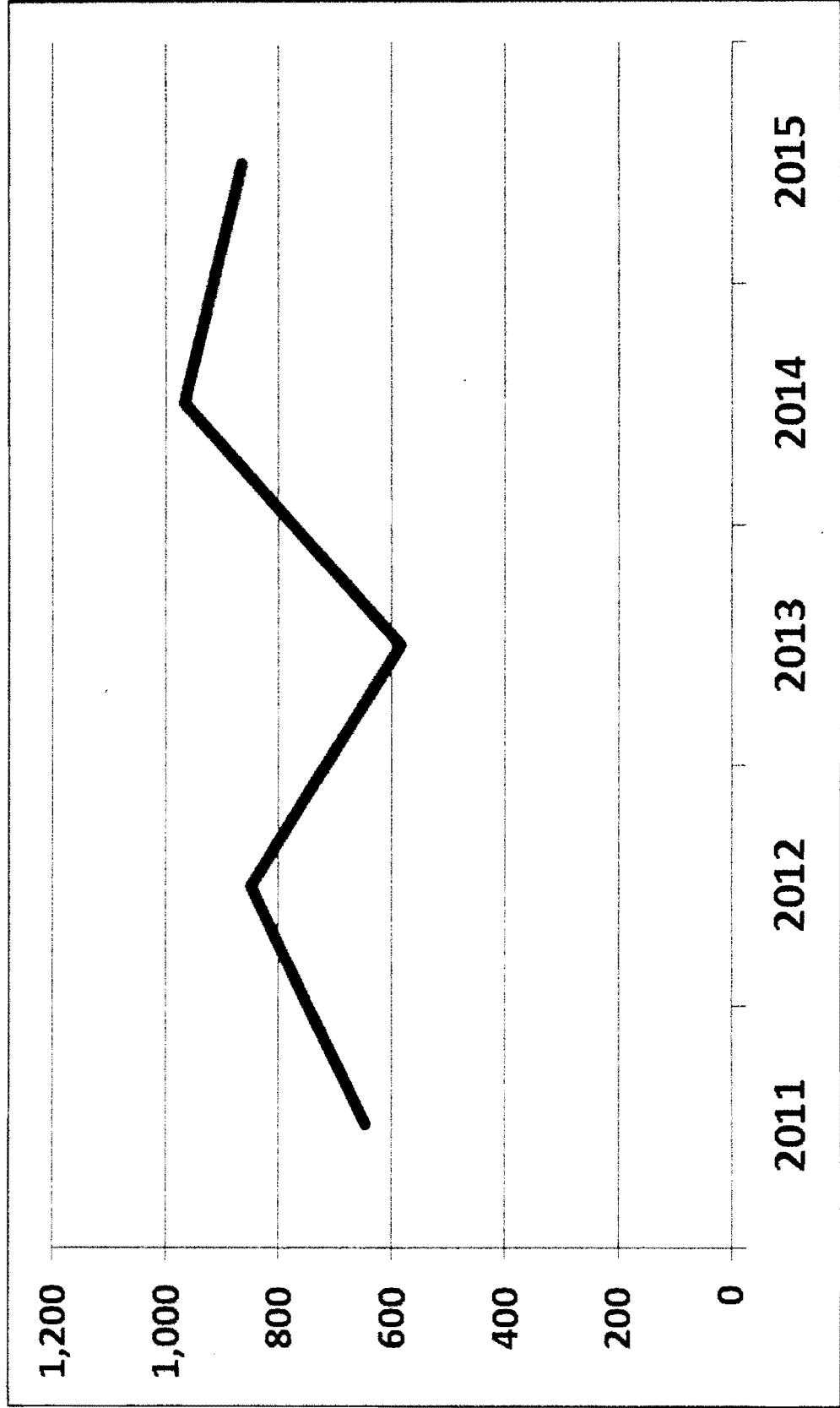
Classification	Jan 1 - Nov 23, 2014	Jan 1 - Nov 23, 2015	% change
0200	121	236	95%
1700s	324	373	15%
2013s	129	20	(85%)
Total sex related offenses	574	629	9.6%

17

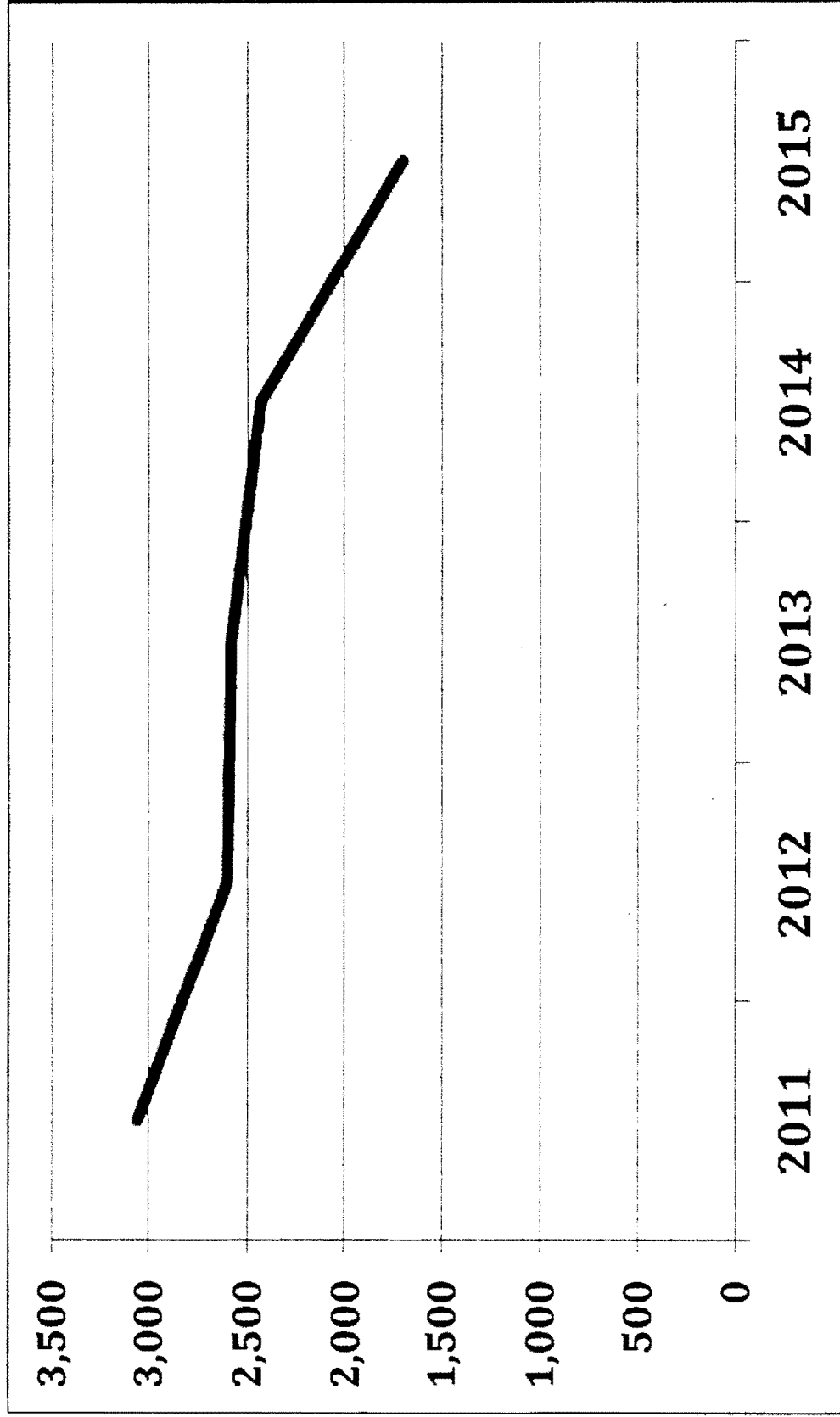
# Robbery, 2011-YTD 2015



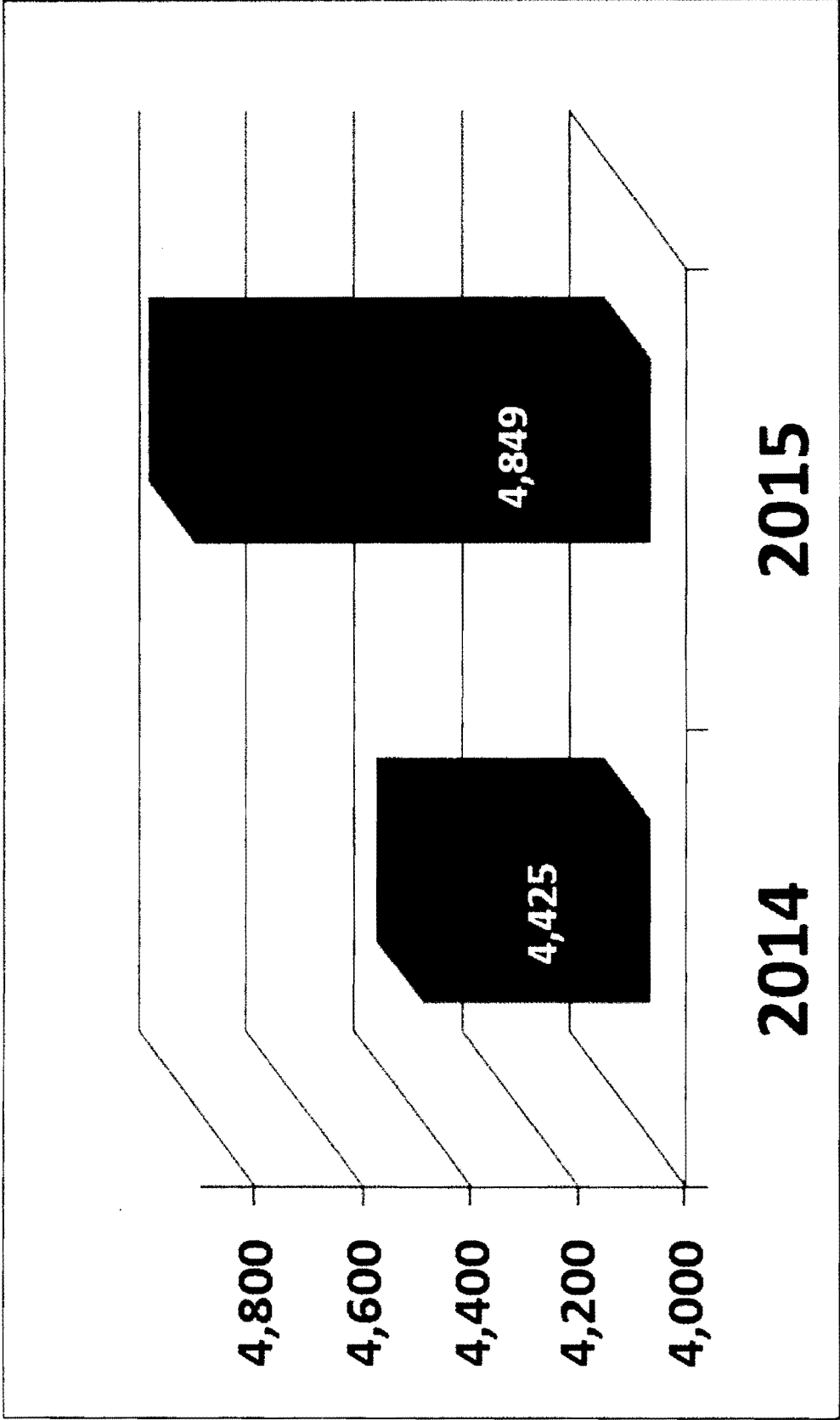
# Aggravated Assaults, 2011-YTD 2015



# Burglary, 2011-YTD2015

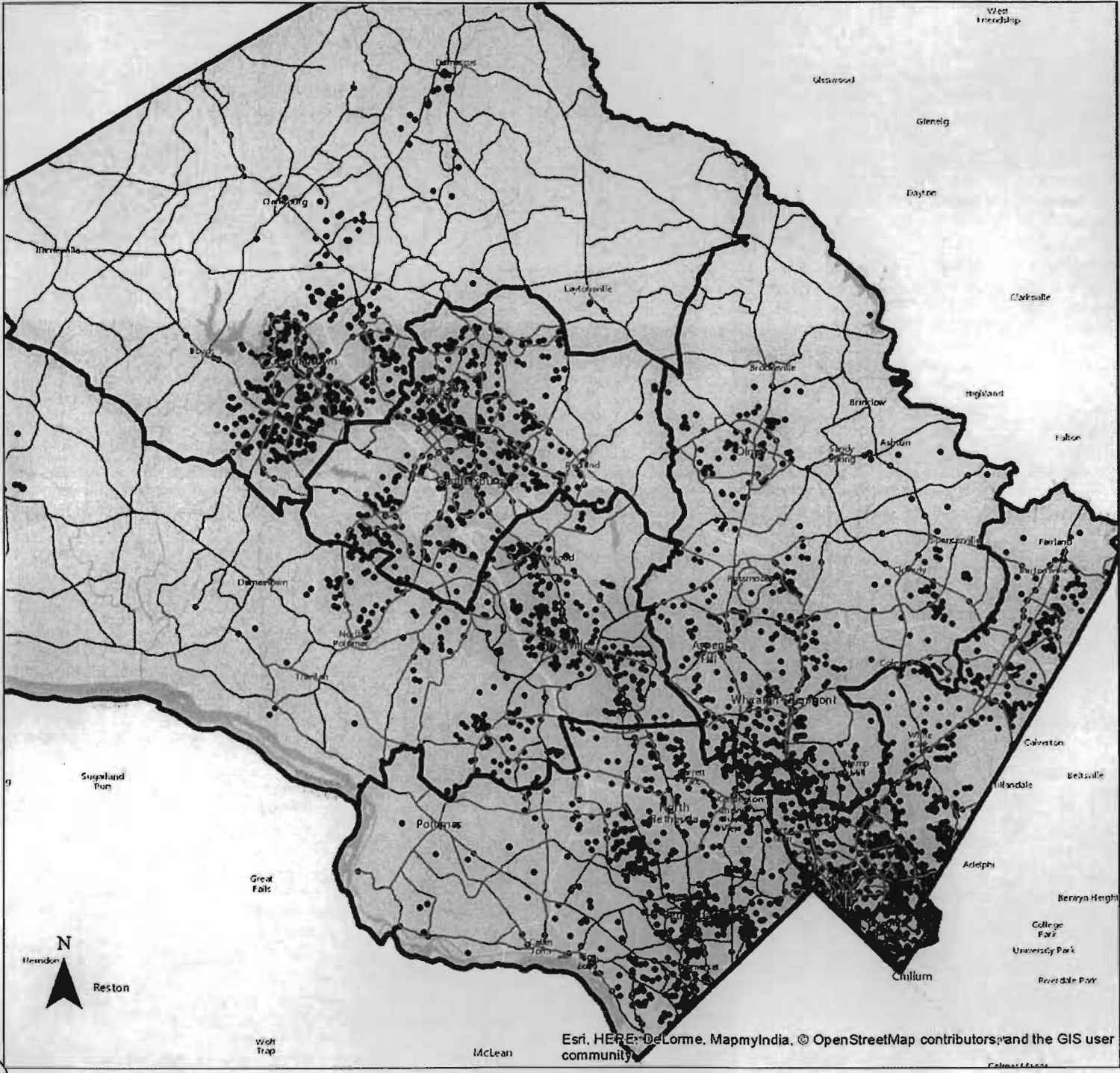
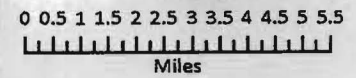


# Thefts from Auto, 2014 v YTD 2015



# Thefts From Autos

## 2015 YTD

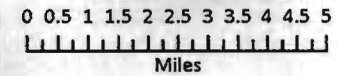


- Police Districts
- Thefts From Cars

Montgomery County Police Department  
Information Management & Technology Division  
02/09/2015

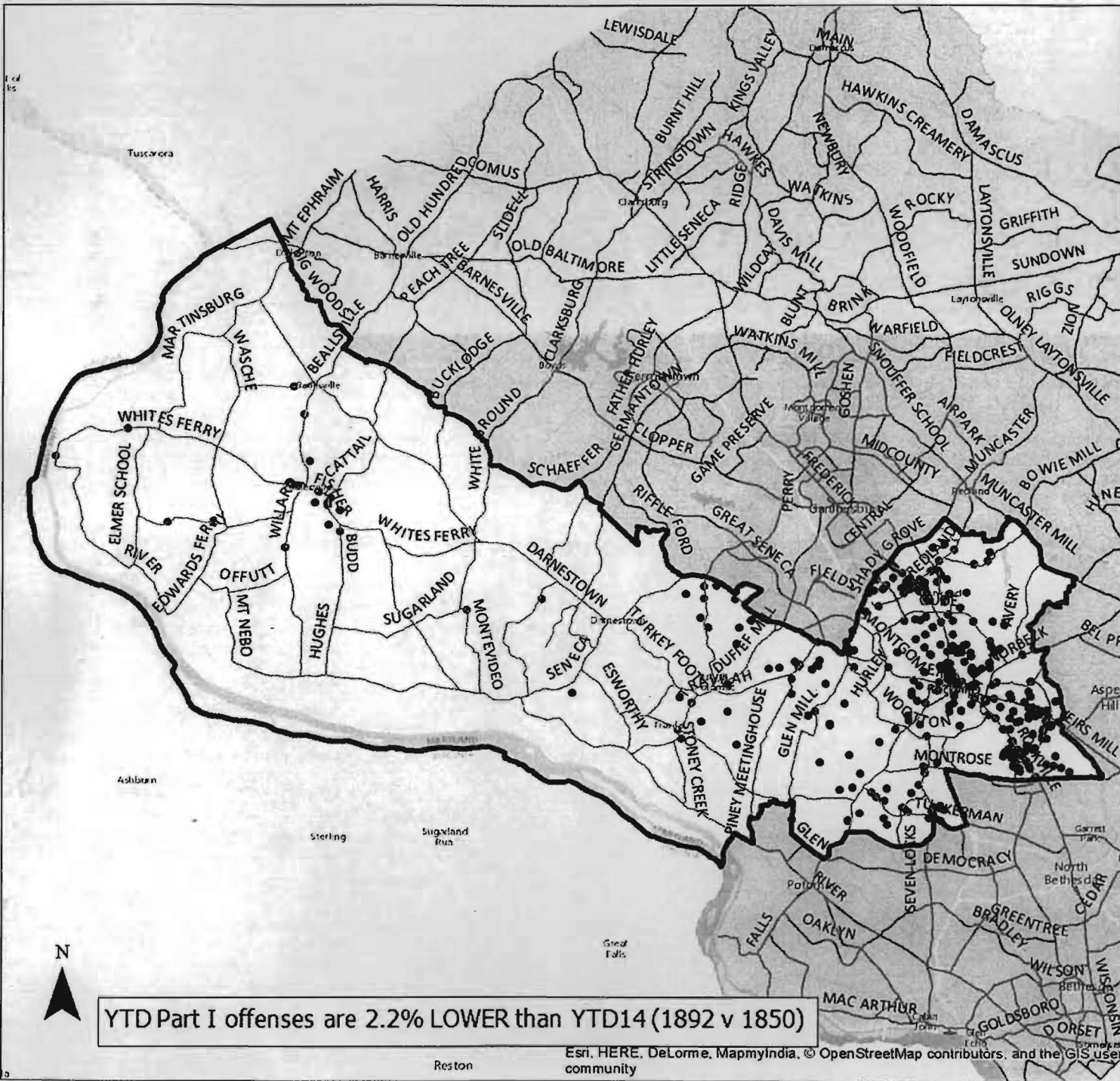
# 1D

## Part I Offenses 2015 YTD



- Police Districts
- Part I Offenses

Montgomery County Police Department  
Information Management & Technology Division  
02/09/2015



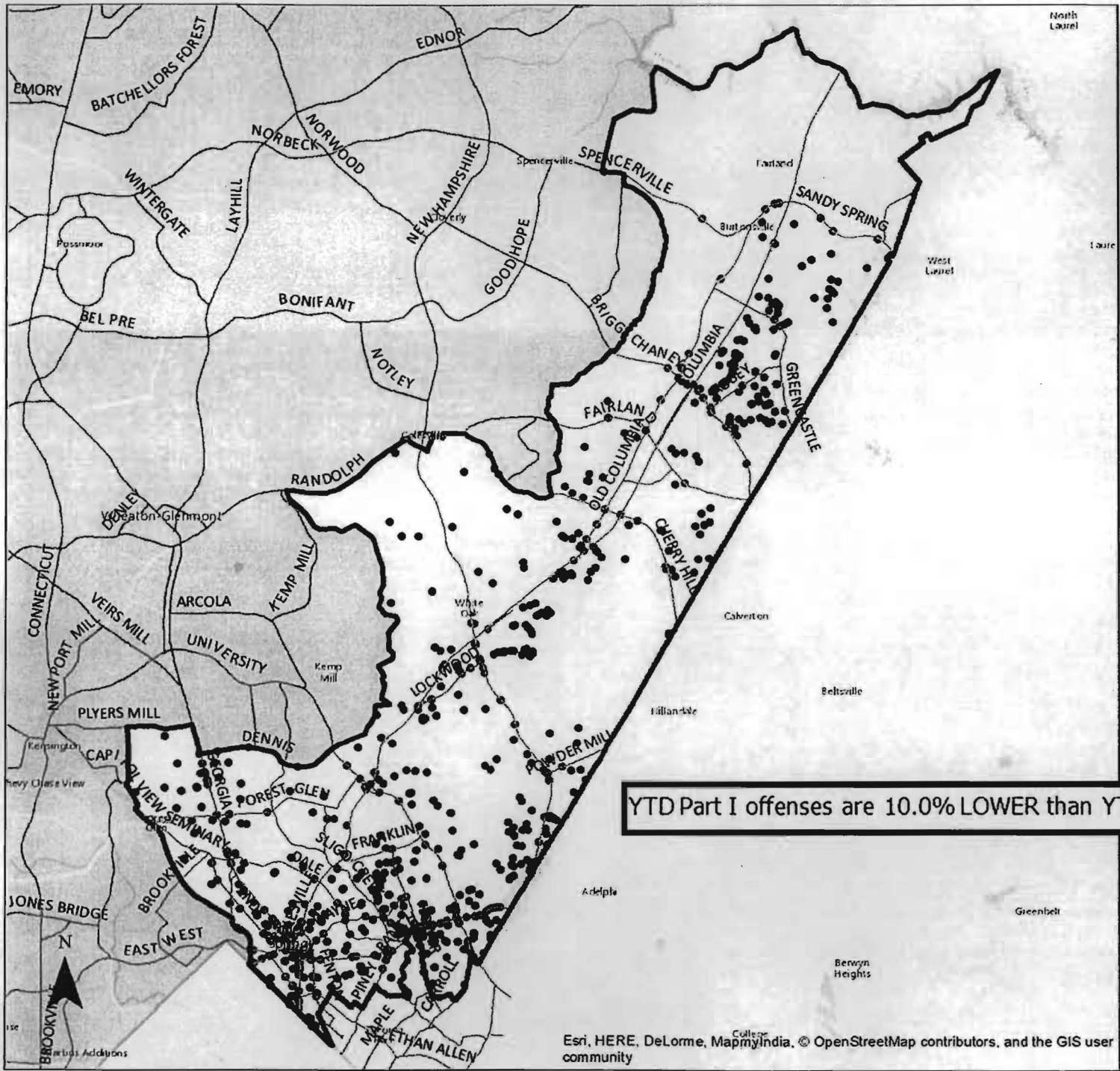
YTD Part I offenses are 2.2% LOWER than YTD14 (1892 v 1850)

Esri, HERE, DeLorme, MapmyIndia, © OpenStreetMap contributors, and the GIS user community

13

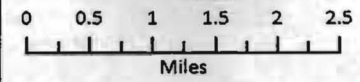






# 3D

## Part I Offenses 2015 YTD



YTD Part I offenses are 10.0% LOWER than YTD14 (3745 v 3370)

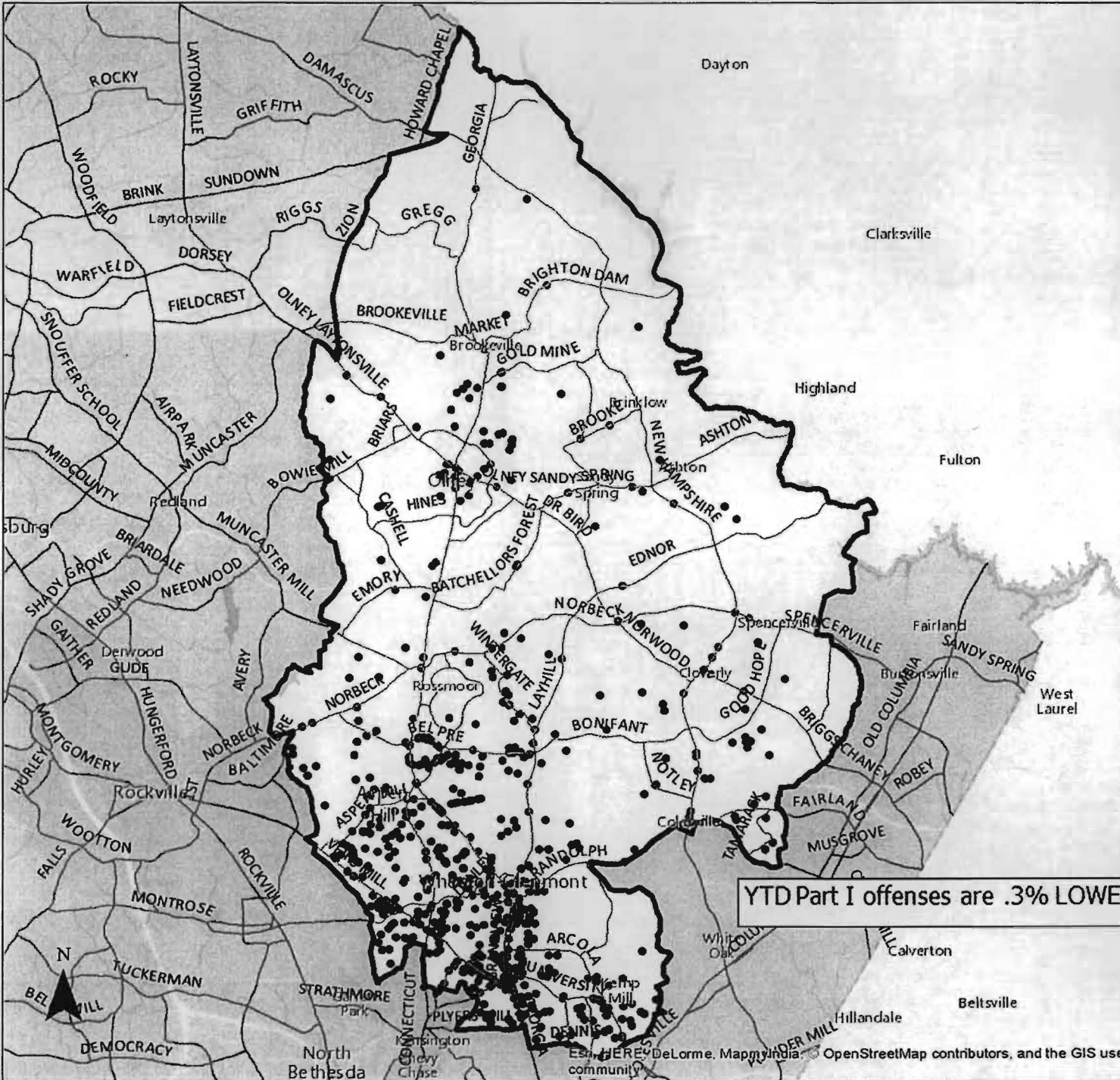
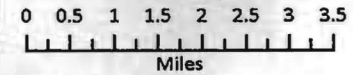
- Police Districts
- Part I Offenses

Montgomery County Police Department  
Information Management & Technology Division  
02/09/2015

Esri, HERE, DeLorme, MapmyIndia, © OpenStreetMap contributors, and the GIS user community

# 4D

## Part I Offenses 2015 YTD



YTD Part I offenses are .3% LOWER than YTD14 (2894 v 2886)

- Police Districts
- Part I Offenses

Montgomery County Police Department  
Information Management & Technology Division  
02/09/2015

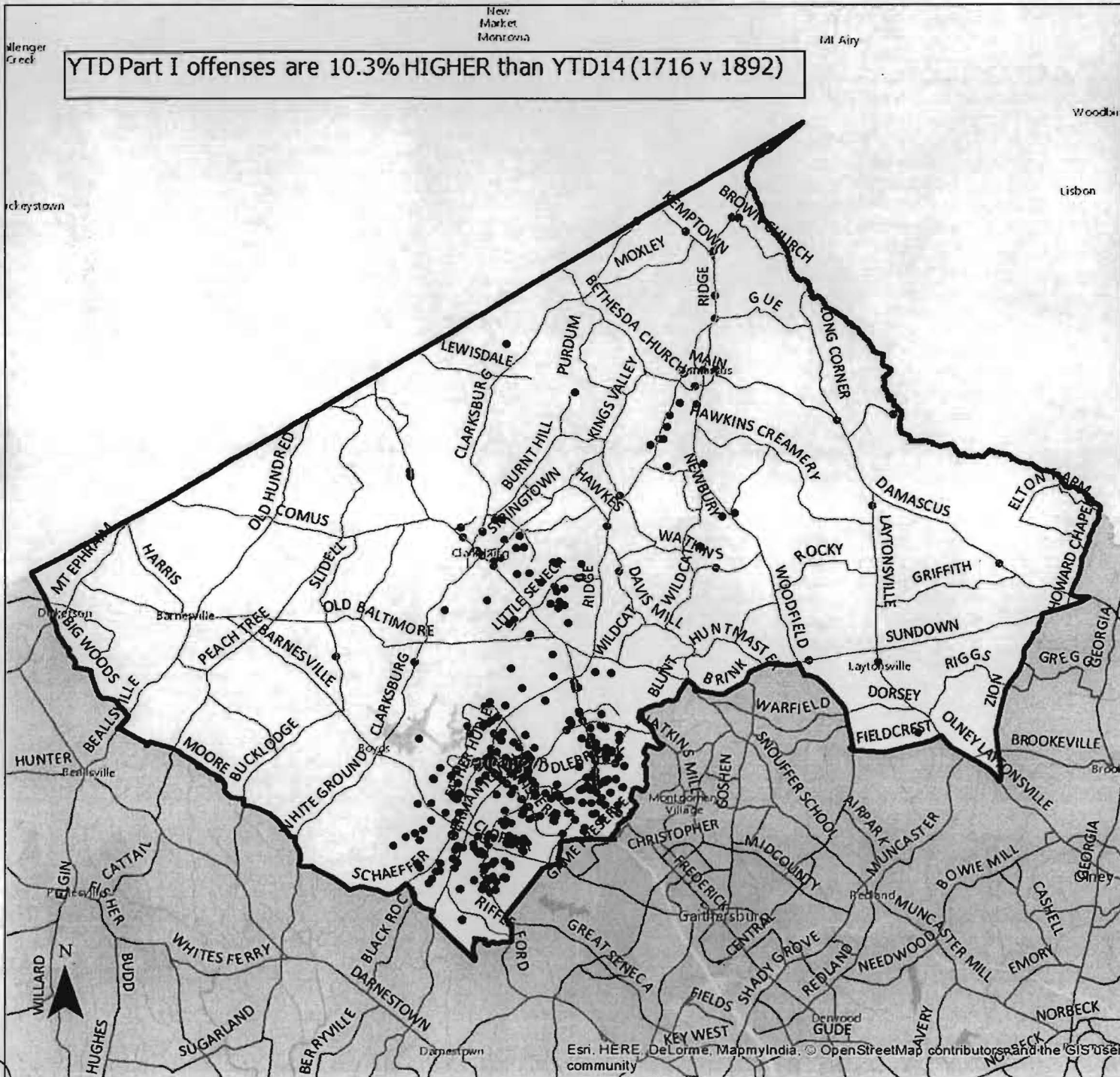
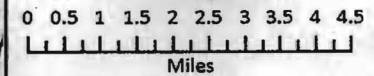
Esri, HERE, DeLorme, MapmyIndia, © OpenStreetMap contributors, and the GIS user

61

YTD Part I offenses are 10.3% HIGHER than YTD14 (1716 v 1892)

# 5D

## Part I Offenses 2015 YTD

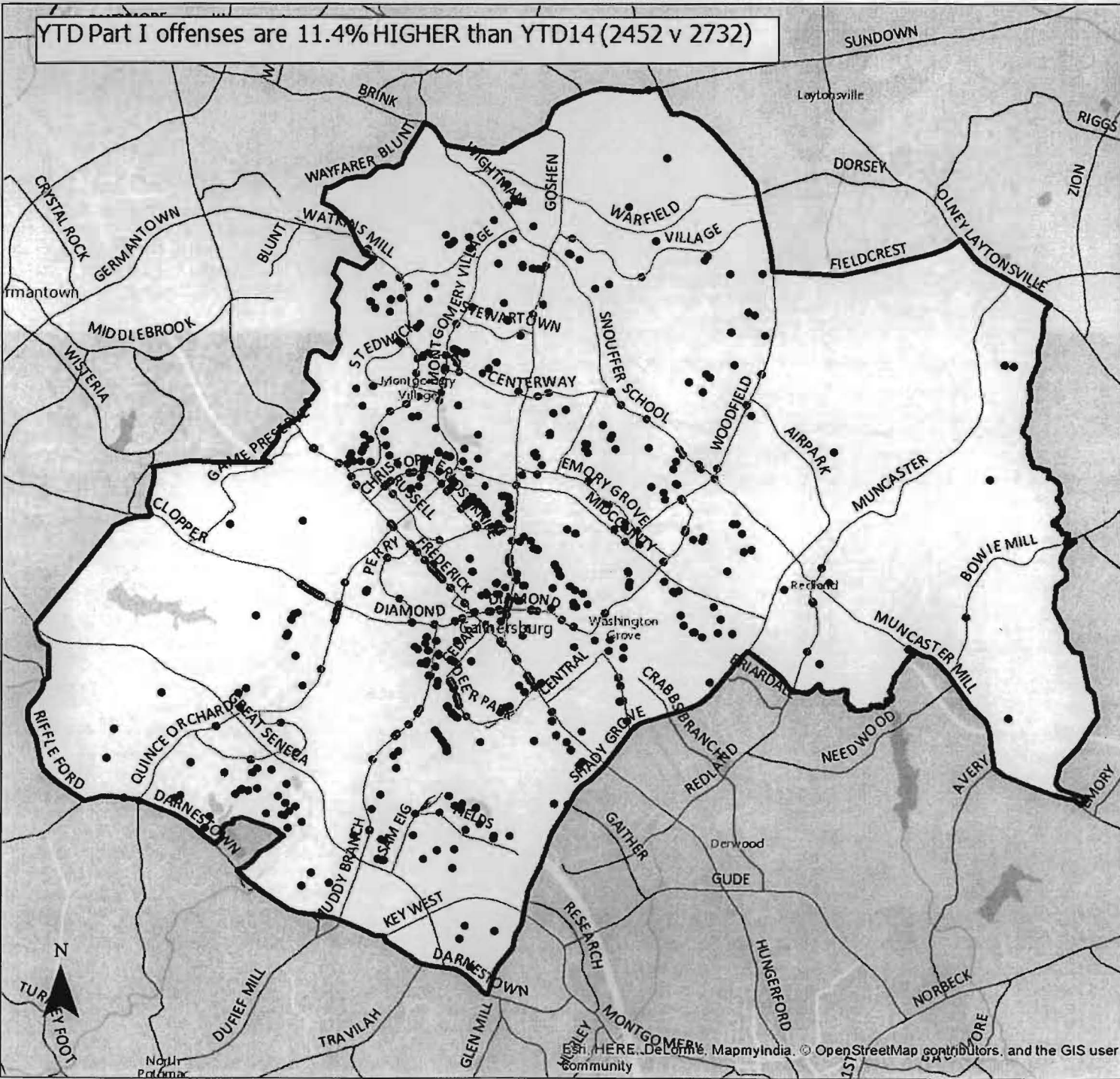


- Police Districts
- Part I Offenses

Montgomery County Police Department  
Information Management & Technology Division  
02/09/2015

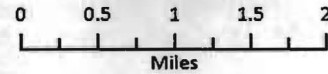
Esri, HERE, DeLorme, MapmyIndia, © OpenStreetMap contributors, and the GIS User community

YTD Part I offenses are 11.4% HIGHER than YTD14 (2452 v 2732)



# 6D

## Part I Offenses 2015 YTD



- Police Districts
- Part I Offenses

Montgomery County Police Department  
Information Management & Technology Division  
02/09/2015

Map data by HERE, DeLorme, MapmyIndia, © OpenStreetMap contributors, and the GIS user community

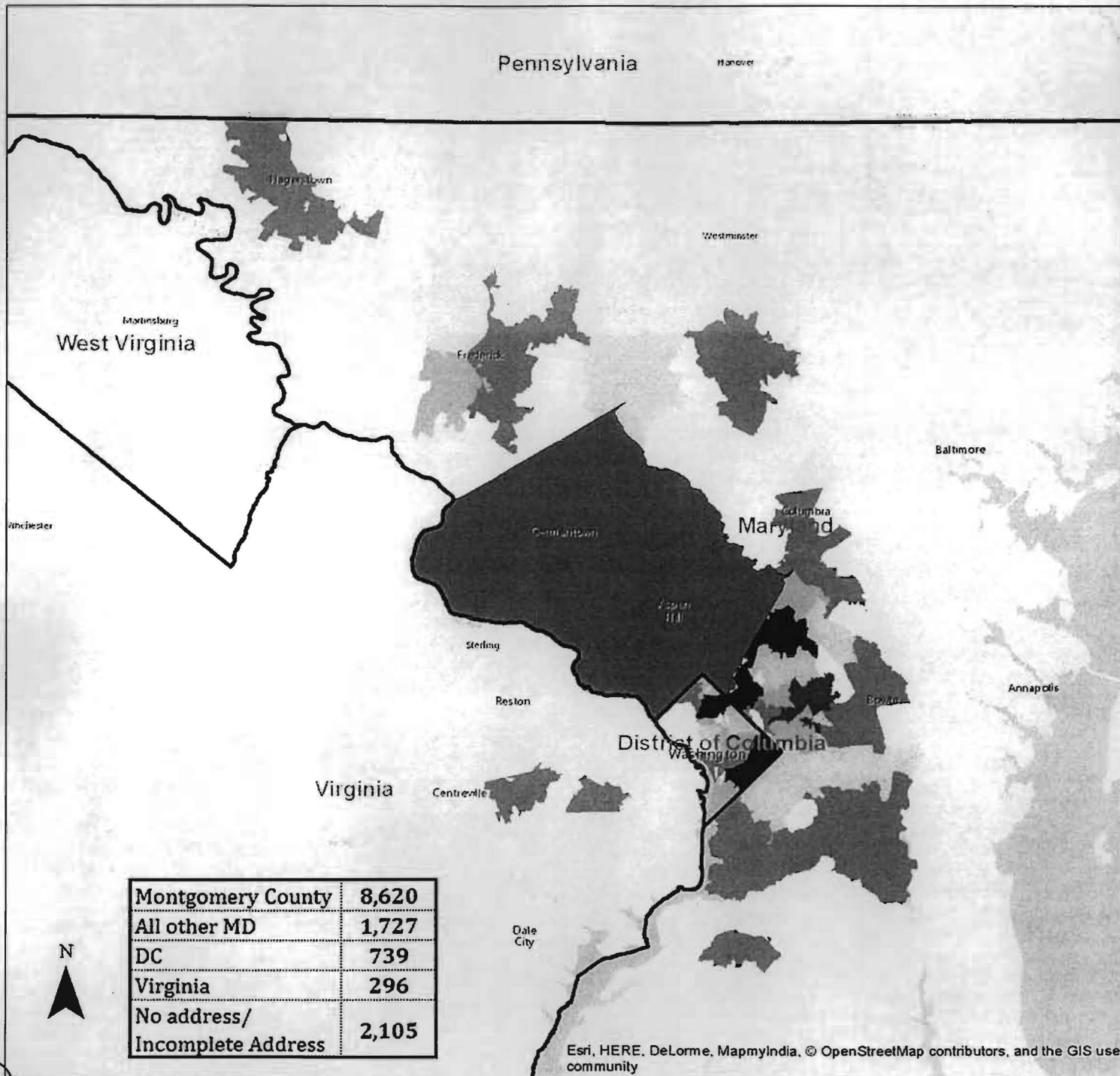
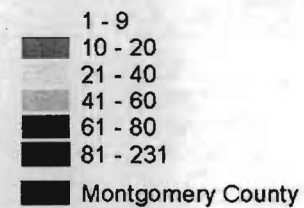


# Arrests by Residence of Arrestee

## 2015 YTD



### Number of Arrestees



Montgomery County	8,620
All other MD	1,727
DC	739
Virginia	296
No address/ Incomplete Address	2,105



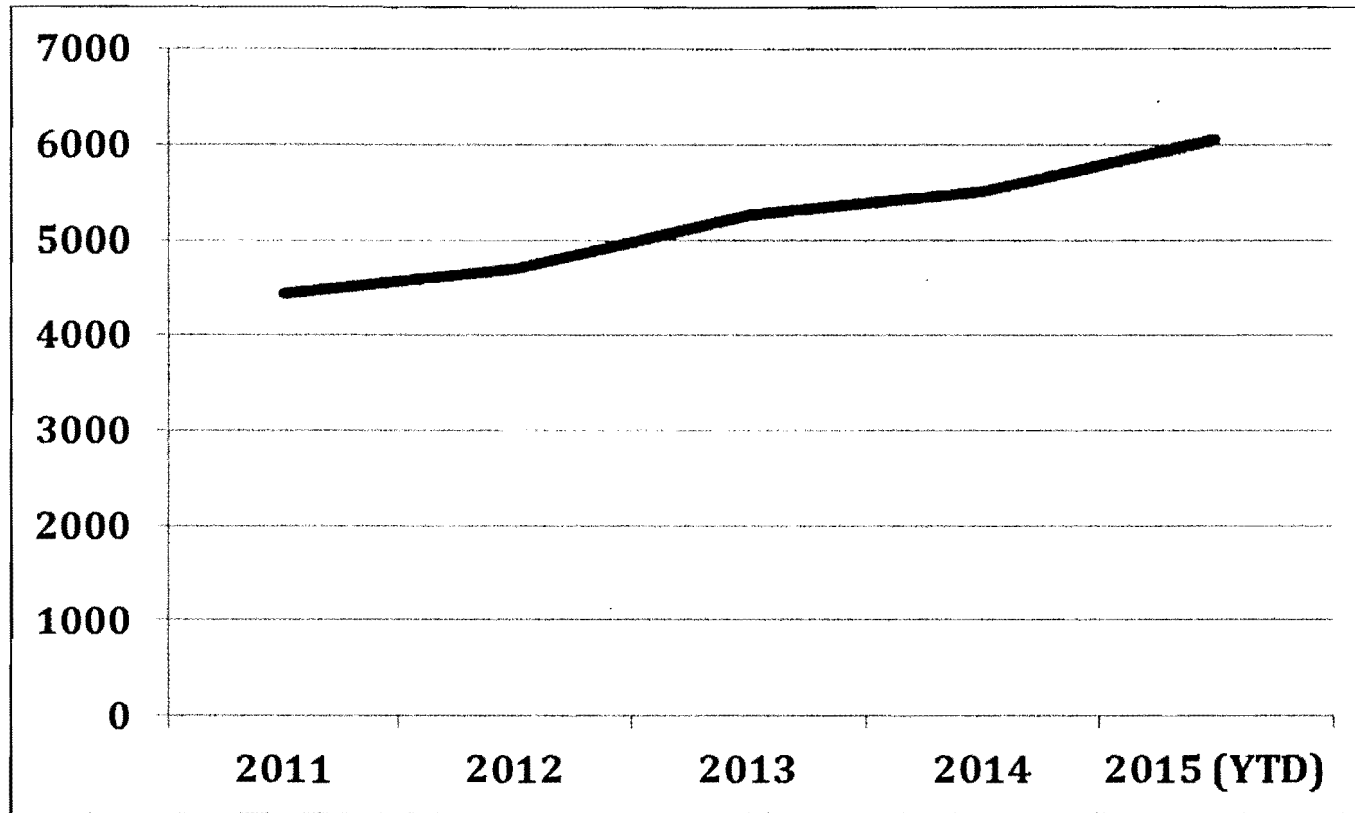
# Closures

<b>OFFENSE</b>	<b>YTD15 CLOSURE RATE</b>	<b>2014 Avg. Closure Rate - Metropolitan Counties*</b>
<b>HOMICIDE</b>	<b>79.2%</b>	<b>67.1%</b>
<b>RAPE</b>	<b>80.5%</b>	<b>42.1%</b>
<b>ROBBERY</b>	<b>42.4%</b>	<b>31.8%</b>
<b>AGGRAVATED ASSAULT</b>	<b>65.7%</b>	<b>61.3%</b>
<b>BURGLARY</b>	<b>29.7%</b>	<b>14.5%</b>

\*Source: **FBI Table 25, "Percent of Offenses Cleared by Arrest or Exceptional Means, by Population Group, 2014"**

23

# Mental Illness Calls for Service, 2011 -YTD2015



	2014	2015	% change
Mental Transports	1,859	2,090	12.4%

19

# Suicides, 2011 - YTD2015



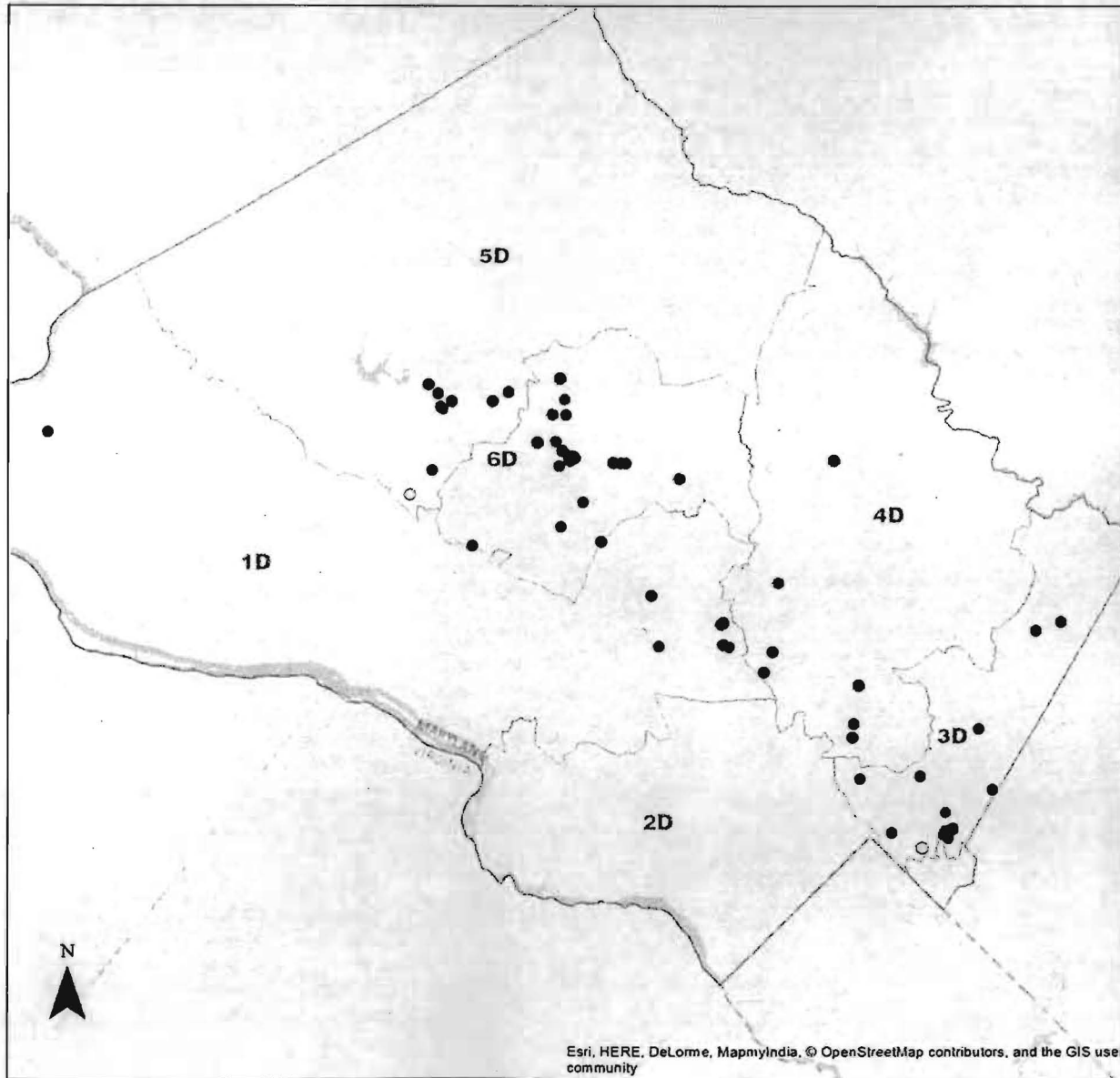
20



# Gang Activity

## Gang-Related Offenses

2015 YTD



### Part I Offenses\*

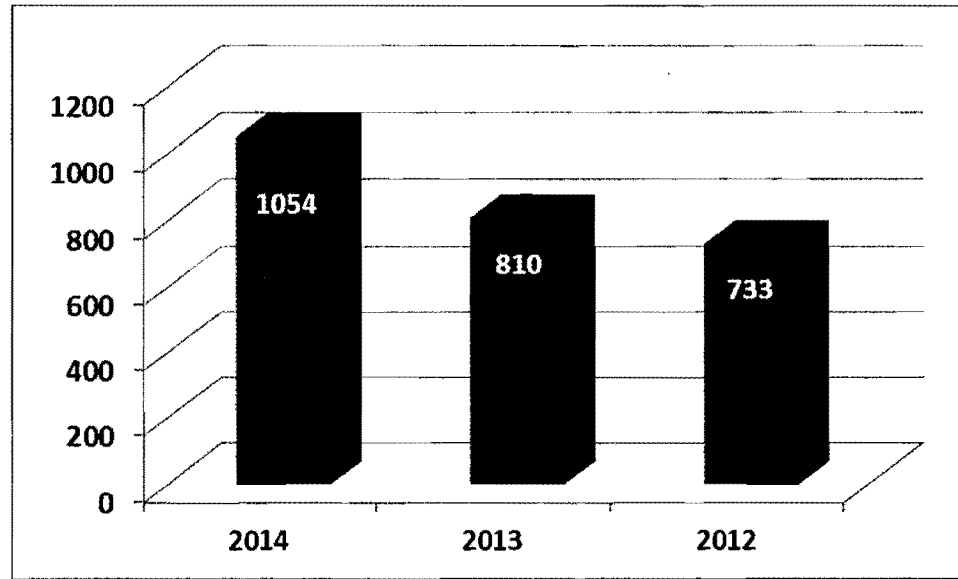
- Homicide
- Rape
- Robbery
- Assault
- Burglary
- Larceny
- Auto Theft

Montgomery County Police Department  
Information Management & Technology Division  
Jason Enos, GIS Manager  
12/01/2015  
Data Source: Special Investigations Division (SID)

\* Part I offenses are those considered "serious crimes" in the FBI Uniform Crime Reporting guidelines.

63

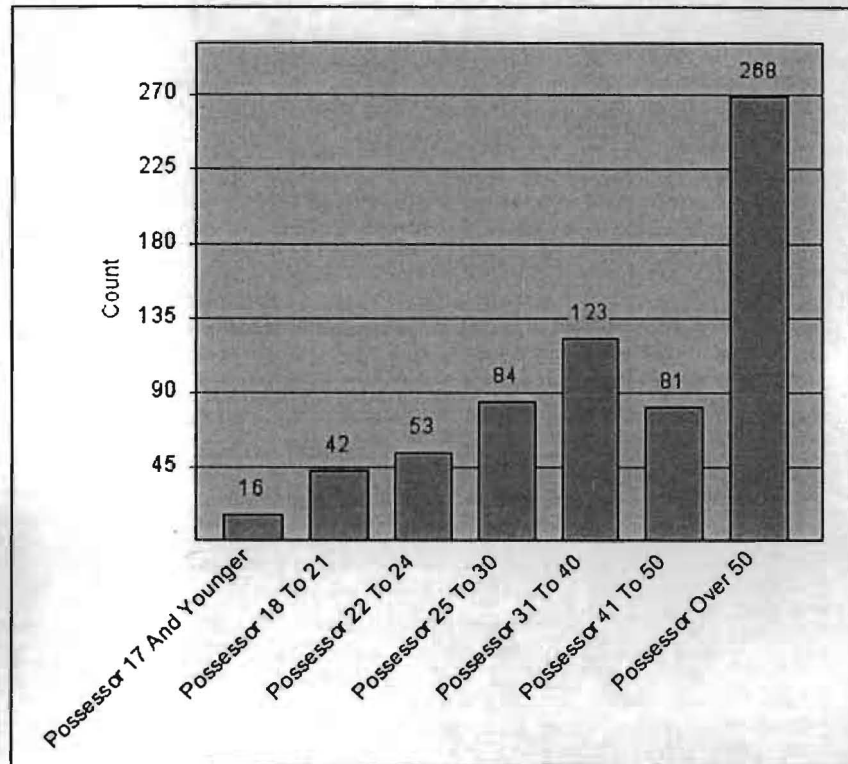
# TOTAL FIREARMS RECOVERED, 2012-2014



**The Department recovered 2,597 guns  
between 2012 - 2014.**

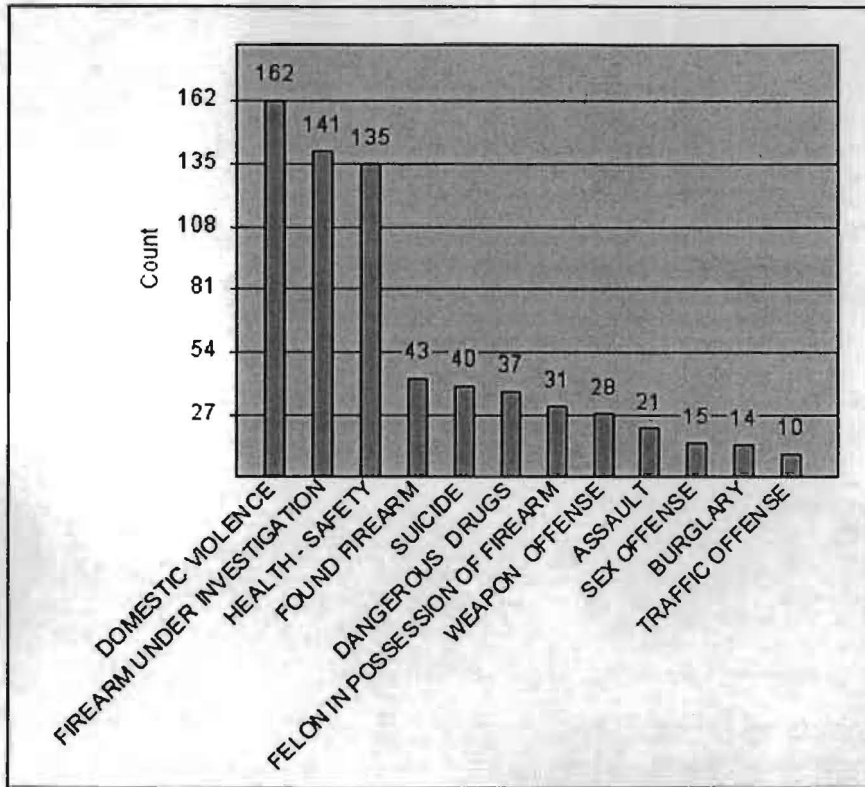
# FIREARMS, YTD 2015

**750 firearms recovered  
YTD (11/23/15).**



**268 of those firearms  
were recovered from  
someone over the age  
of 50.**

# FIREARMS, YTD 2015



The primary reasons for recovery are domestic violence, followed by investigation and health-safety.

2015

# **FACTS ABOUT RECOVERED FIREARMS**

- Of the 1054 guns recovered in 2014, the Firearms Investigations Unit (FIU) recovered 44% (467).
- Nine of the top ten source dealers of recovered firearms are Maryland gun dealers. Eight of these dealers are located in Montgomery County (one in Anne Arundel and one in California).
- FIU flagged 4 Montgomery County residents, along with the MSP and NICS, to prevent them from purchasing firearms. Without these flags, they would pass the background check and legally be able to purchase firearms.

# Questions?



Thank you for your time.