

Isiah Leggett
Montgomery County Executive

September 2011

Montgomery County
Department of Transportation
DIVISION OF
TRANSPORTATION
ENGINEERING
100 Edison Park Drive, 4th Floor
Gaithersburg, Maryland 20878

Project Manager:
Ken Kendall
Phone: 240-777-7267
Fax: 240-777-7277
Email: Kenneth.Kendall@montgomerycountymd.gov

For alternative formats of this newsletter, please contact the Division of Transportation Engineering at:
240-777-7220 (voice).
TTY users call MD Relay.

The Plan Ahead

Arthur Holmes, Jr. - Director
Department of Transportation

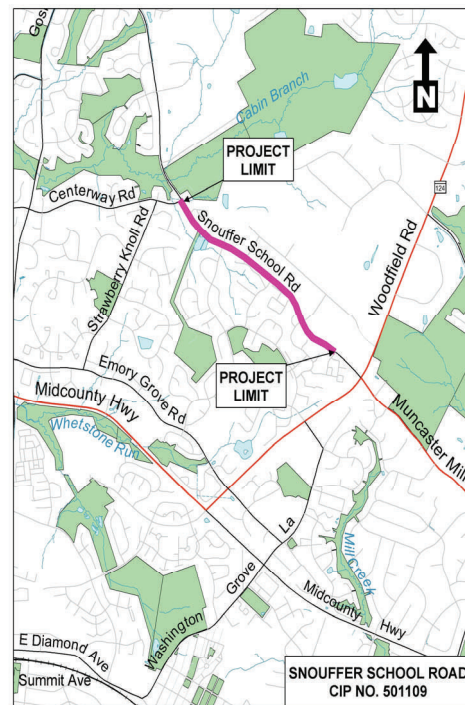
MCDOT Reports on Progress of Final Design Phase for Snouffer School Road Project CIP No. 501109

The purpose of this newsletter is to provide a brief overview of the Snouffer School Road project and to invite you to attend the public meeting scheduled for September 20, 2011. For more information on this project, contact the Project Manager, Ken Kendall at 240-777-7267.

FINAL DESIGN PHASE INITIATED IN Fall 2010

MCDOT will present the 50% complete design at the public meeting on September 20, 2011. A summary of the project improvements may be found inside this newsletter.

Public Meeting
September 20, 2011
7:30pm to 9:00pm
Strawberry Knoll Elementary School
18820 Strawberry Knoll Road
Gaithersburg, Maryland 20879
All-purpose Room



Project Background

This project's Facility Planning Phase I was completed in July 2006; Phase II - preliminary engineering was finished in October 2007 and the final design phase was initiated in September 2010. Proposed revisions to the Facility Planning Phase I - Recommended Alternative typical section and Phase II preliminary design to minimize impacts to adjacent properties and commercial entrance consolidation for safer access are noted on page 2. This project connects to the County's Snouffer School Road North project CIP No. 501119 to provide improved access to the planned Multi-Agency Service Park on the Webb Tract and the Maryland State Highway Administration's MD 124 project as shown on the map on page 2.

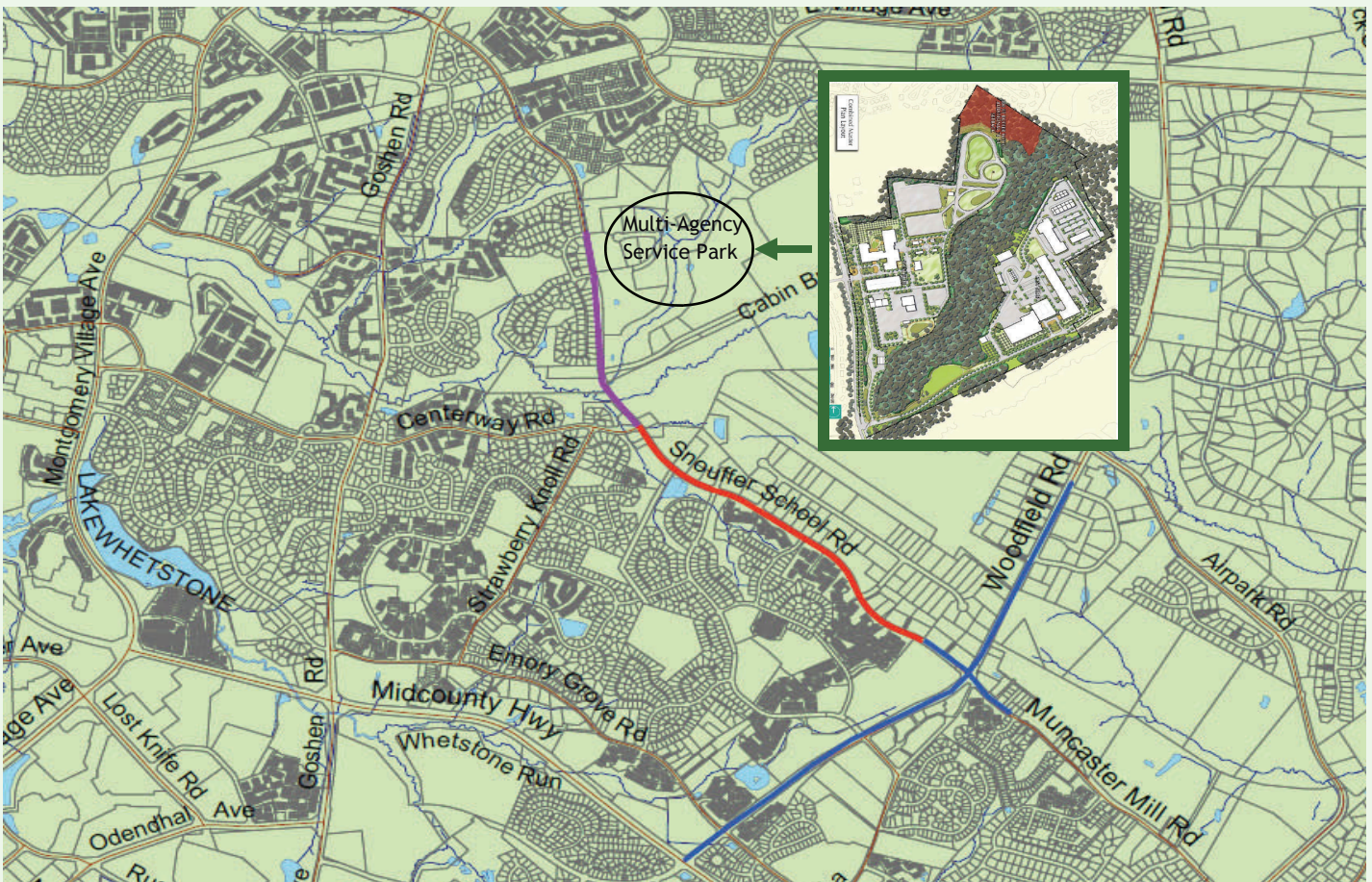
Snouffer School Road CIP Project No. 501109 Schedule

Complete Final design	Winter 2013
Start construction	Fall 2014
Complete construction	Fall 2016

Revisions Since Facility Planning Phase I Completion

The Recommended Alternative proposes the following with revisions noted:

- Four travel lanes with center turn lane and bike lanes (**reduced travel lane width from 12 to 11 feet and increased bike lane width from 5 to 5.5 feet**)
- Continuous 5-foot sidewalk along western side of roadway and 8-foot shared-use path along eastern side.
- Grass strip to separate the roadway
- Bio-swale along the western side between Flower Hill Way and Mallory Place (**new feature**)
- Alignment shift for the roadway segment south of Carriage Walk Drive. (**revision**)
- Commercial entrance consolidation to reduce number of access points along Snouffer School Road (**new feature**)



Map Legend

Snouffer School Road CIP Project No. 501109

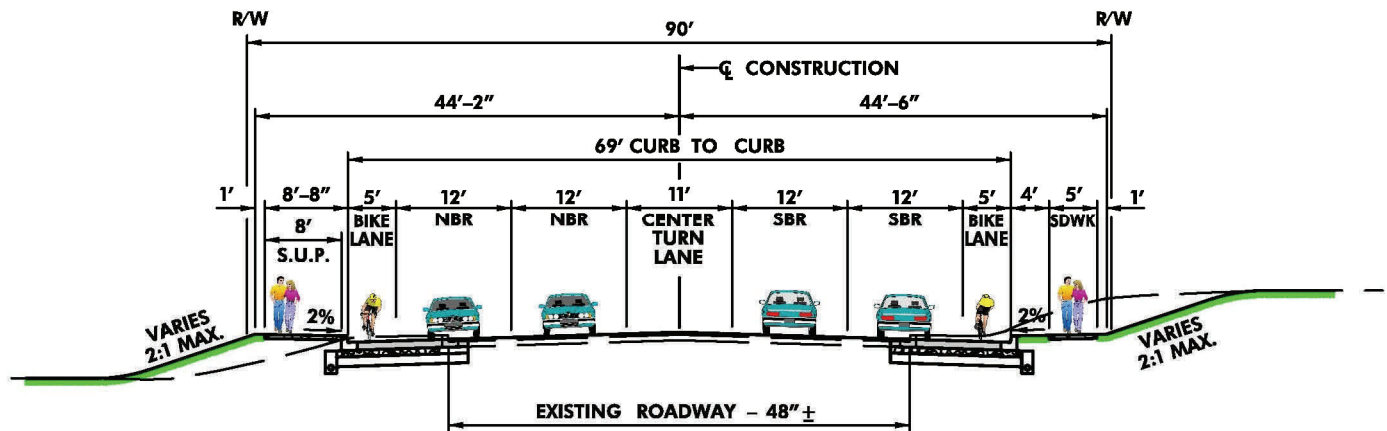
Woodfield Road MD 124- Phase 2(State Highway Administration Project)

Snouffer School Road North CIP Project No. 501119

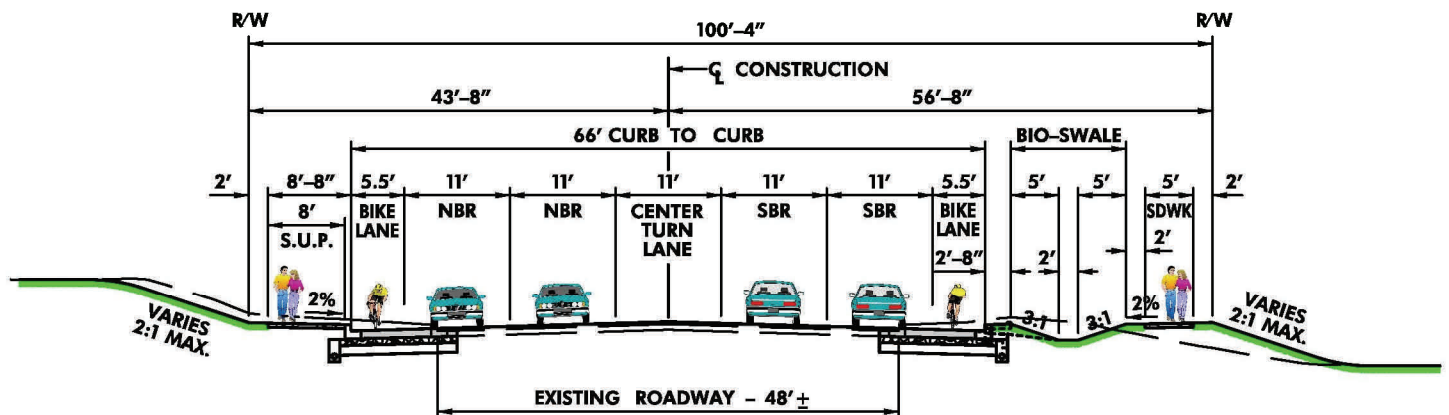
Multi-Agency Service Park CIP Project No. 470907



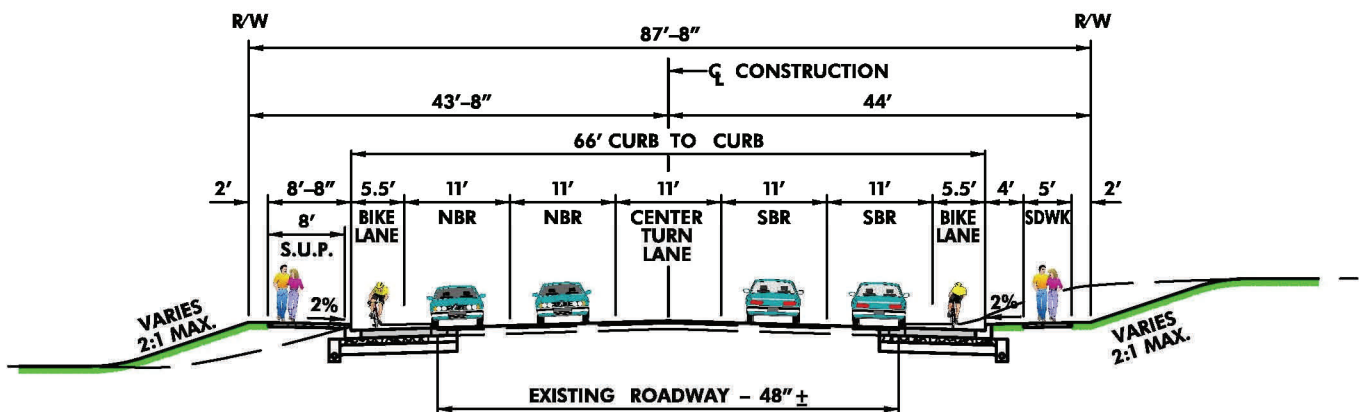
SNOUFFER SCHOOL ROAD ROADWAY TYPICAL SECTIONS



SNOUFFER SCHOOL ROAD – FACILITY PLANNING SECTION



ENVIRONMENTAL SITE DESIGN SECTION



NORMAL SECTION

SNOUFFER SCHOOL ROAD – FINAL DESIGN SECTIONS

MCDOT Wants Your Feedback

The MCDOT encourages you to provide your comments on the enclosed project comment form. Your input is important as it allows MCDOT, decision makers, and elected officials to understand the concerns of the community.

Please Join DTE at the

Snouffer School Road project

Public Meeting

September 20, 2011

7:30pm to 9:00pm

Strawberry Knoll Elementary School

18820 Strawberry Knoll Road

Gaithersburg, Maryland 20879

All-purpose Room

Montgomery County Department of Transportation (MCDOT)
DIVISION OF TRANSPORTATION ENGINEERING
100 Edison Park Drive, 4th Floor
Gaithersburg, Maryland 20878

