

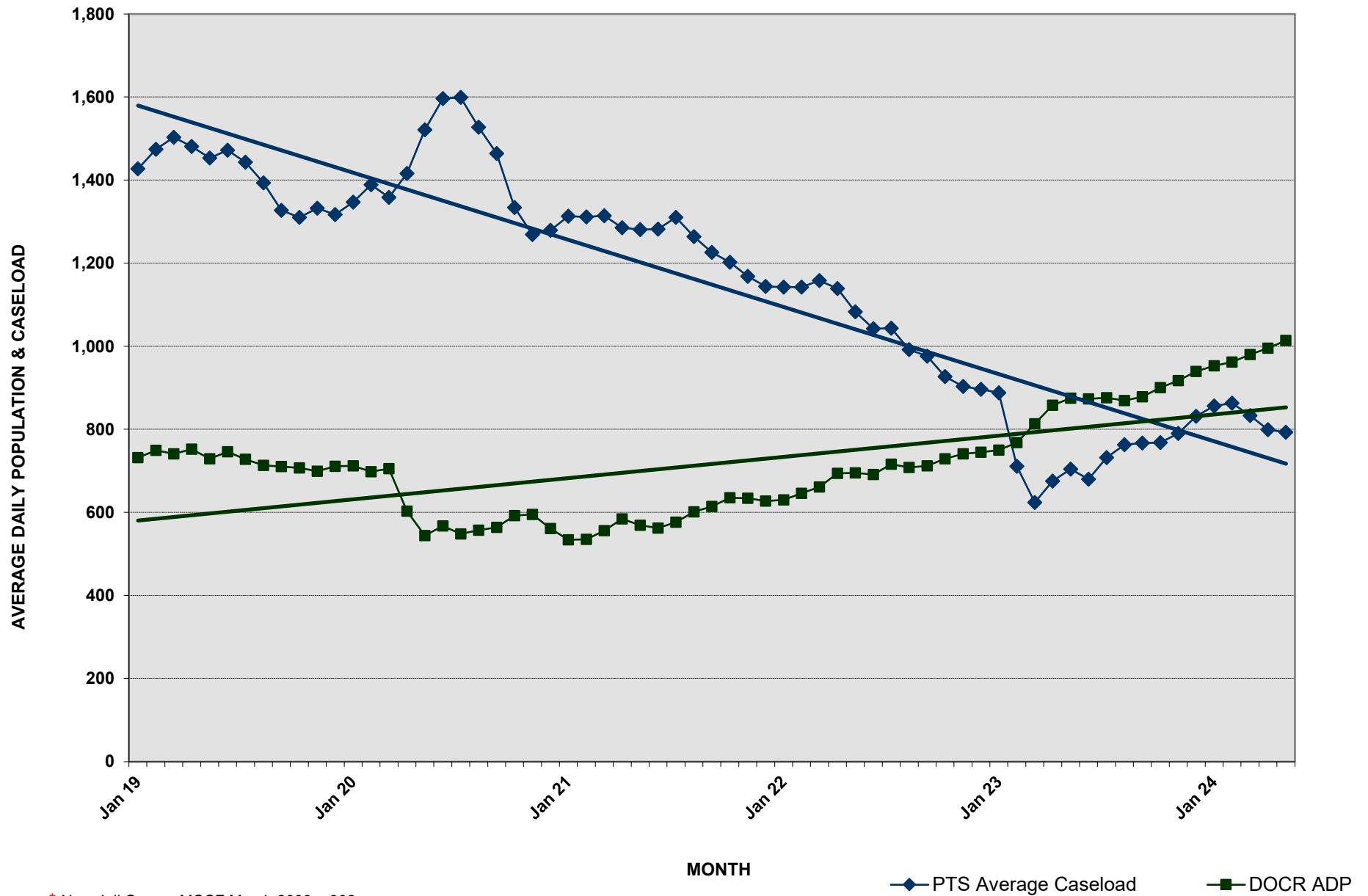


# DEPARTMENT OF CORRECTION AND REHABILITATION

## PRE-TRIAL AVERAGE DAILY CASELOAD \*

### DETENTION SERVICES AND PRE-RELEASE AVERAGE DAILY POPULATION

JANUARY 1, 2019 - May 31, 2024



\* New Jail Opens, MCCF March 2003 = 902

\* PTS Average Caseload -Number of Criminal Justice Clients under Pre-Trial Services (ACS, IPSA, PTSU)



**DEPARTMENT OF CORRECTION AND REHABILITATION**  
**PRE-TRIAL AVERAGE DAILY CASELOAD\***  
**DETENTION SERVICES AND PRE-RELEASE AVERAGE DAILY POPULATION**  
**JANUARY 2020 - PRESENT**

**YEAR 2020**

DIVISION	JAN	FEB	MAR	APR	MAY	JUN	JUL	AUG	SEP	OCT	NOV	DEC	20
MCDC	58	55	46	45	54	63	55	59	60	70	65	47	56
PRRS	97	107	114	67	29	16	0	0	0	0	0	0	36
MCCF	557	536	545	491	461	488	493	498	504	522	530	514	512
<b>Average (ADP)</b>	<b>712</b>	<b>698</b>	<b>705</b>	<b>603</b>	<b>544</b>	<b>567</b>	<b>548</b>	<b>557</b>	<b>564</b>	<b>592</b>	<b>595</b>	<b>561</b>	<b>604</b>
<b>PTS Average Caseload</b>	<b>1,347</b>	<b>1,389</b>	<b>1,358</b>	<b>1,416</b>	<b>1,521</b>	<b>1,596</b>	<b>1,599</b>	<b>1,527</b>	<b>1,464</b>	<b>1,334</b>	<b>1,269</b>	<b>1,279</b>	<b>1,425</b>

**YEAR 2021**

DIVISION	JAN	FEB	MAR	APR	MAY	JUN	JUL	AUG	SEP	OCT	NOV	DEC	21
MCDC	53	50	51	46	53	53	50	48	53	49	51	41	50
PRRS	0	0	0	0	0	0	0	0	0	0	0	0	0
MCCF	481	485	505	538	516	509	526	553	561	586	583	586	536
<b>Average (ADP)</b>	<b>534</b>	<b>535</b>	<b>556</b>	<b>584</b>	<b>569</b>	<b>562</b>	<b>576</b>	<b>601</b>	<b>614</b>	<b>635</b>	<b>634</b>	<b>627</b>	<b>586</b>
<b>PTS Average Caseload</b>	<b>1,313</b>	<b>1,311</b>	<b>1,314</b>	<b>1,285</b>	<b>1,281</b>	<b>1,282</b>	<b>1,310</b>	<b>1,264</b>	<b>1,226</b>	<b>1,202</b>	<b>1,168</b>	<b>1,144</b>	<b>1,258</b>

**YEAR 2022**

DIVISION	JAN	FEB	MAR	APR	MAY	JUN	JUL	AUG	SEP	OCT	NOV	DEC	22
MCDC	43	46	39	42	48	51	52	40	41	54	58	63	48
PRRS	0	0	0	0	0	0	0	0	0	0	0	0	0
MCCF	587	600	622	652	647	640	664	668	671	675	683	682	649
<b>Average (ADP)</b>	<b>630</b>	<b>646</b>	<b>661</b>	<b>694</b>	<b>695</b>	<b>691</b>	<b>716</b>	<b>708</b>	<b>712</b>	<b>729</b>	<b>741</b>	<b>745</b>	<b>697</b>
<b>PTS Average Caseload</b>	<b>1,142</b>	<b>1,142</b>	<b>1,158</b>	<b>1,139</b>	<b>1,083</b>	<b>1,042</b>	<b>1,043</b>	<b>992</b>	<b>976</b>	<b>927</b>	<b>903</b>	<b>896</b>	<b>1,037</b>

**YEAR 2023**

DIVISION	JAN	FEB	MAR	APR	MAY	JUN	JUL	AUG	SEP	OCT	NOV	DEC	23
MCDC	65	63	87	103	96	81	73	69	72	72	90	104	81
PRRS	0	0	0	15	33	45	46	55	62	62	58	60	36
MCCF	685	705	726	740	746	747	757	744	744	766	768	775	742
<b>Average (ADP)</b>	<b>750</b>	<b>768</b>	<b>813</b>	<b>858</b>	<b>875</b>	<b>873</b>	<b>876</b>	<b>869</b>	<b>878</b>	<b>900</b>	<b>917</b>	<b>939</b>	<b>860</b>
<b>PTS Average Caseload</b>	<b>888</b>	<b>711</b>	<b>624</b>	<b>675</b>	<b>704</b>	<b>680</b>	<b>732</b>	<b>763</b>	<b>767</b>	<b>768</b>	<b>790</b>	<b>831</b>	<b>744</b>

**YEAR 2024**

DIVISION	JAN	FEB	MAR	APR	*MAY	JUN	JUL	AUG	SEP	OCT	NOV	DEC	24
MCDC	103	108	127	112	134								117
PRRS	58	55	57	63	59								58
MCCF	793	800	796	821	821								806
<b>Average (ADP)</b>	<b>953</b>	<b>962</b>	<b>980</b>	<b>995</b>	<b>1,014</b>								<b>981</b>
<b>PTS Average Caseload</b>	<b>856</b>	<b>863</b>	<b>833</b>	<b>799</b>	<b>793</b>								<b>829</b>

\*\*ADP\*\* - Average Daily Population (Include Weekenders)

\*\*PTS Average Caseload\*\* - Number of Criminal Justice Clients under Pre-Trial Services (ACS, IPSA, PTSU)

\*\*Due to COVID, PRRS did not have any residents from JULY 2020 - APRIL 15, 2023. The facility opened on APRIL 16, 2023

\* May 1, 2024 - May 31, 2024