



DEPARTMENT OF CORRECTION AND REHABILITATION

Isiah Leggett
County Executive

Arthur M. Wallenstein
Director

PRRS Quarterly Chief's Report *Issued 12/4/14 (Updates since September 11, 2014)*

Highlights

- 1. Federal Grant:** The County's HHS and DOCR received a \$600,000 federal award for a 24-month demonstration project that addresses the frequent and repeated incarceration of individuals with co-occurring behavioral health disorders. More specifically, the project will utilize a Forensic Assertive Community Treatment (FACT) team run by the non-profit "People Encouraging People" that will allow the diversion of over 120 of the highest risk to recidivate individuals from jail to the Montgomery County Pre-Release Center (PRC) followed by placement into permanent housing. The FACT team will provide wrap-around evidenced-based services to these clients and the Montgomery Coalition for the Homeless will provide temporary and permanent housing assistance.
- 2. "Shining Star" Reentry Award:** On September 22, PRRS was one of four programs in the state to be recognized for providing outstanding reentry services to the incarcerated population. PRRS received the award at the 2nd Bi-Annual Statewide Community Re-Entry Symposium which was convened by Senator Verna Jones Rodwell and the Maryland Re-Entry Collaborative. The other programs recognized were the Reentry Court in Prince Georges County, Gatekeepers Program in Washington County, and Goodwill Industries.
- 3. The Universities at Shady Grove Job Shadowing Day:** PRRS hosted 29 students and staff from the criminal justice programs at UGS and organized a full day of events for the students to job shadow several of the key job positions at PRRS including case manager, work release coordinator, resident supervisor, and managers. PRRS also arranged for the students to hear from two panels: one composed of Residents and the other composed of staff.
- 4. Maryland State Victim's Services Board:** On 11/5, PRRS presented DOCR's comprehensive efforts to safeguard the rights and safety of victims associated with individuals under supervision. DOCR works closely with the court system and the State Attorney's Office to ensure that all victims who register for notifications regarding custody status changes for individuals under correctional supervision receive them immediately. Additionally, PRRS shared its near 100% compliance rate of restitution payments from Residents who have court-ordered obligations and who are working. As part of a new state law which prioritizes payment of restitution over program fees, PRRS is changing its computerized accounting system beginning in January to automatically deduct restitution payments beginning in January 2015.
- 5. Federal Audit:** The Federal Bureau of Prisons conducted an unannounced monitoring visit on October 29-30, and subsequently released a positive report which noted no program deficiencies. The report credited the program with maintaining high rates of resident employment and for providing excellent case management services. Interviews with federal residents yielded uniform

praise for the program. Concerning the physical plant, the FBOP did cite the poor condition of residents' bathrooms but was satisfied with PRRS' plans for renovation.

Program Developments

- 1. International Community Corrections Conference:** PRRS sent a delegation of four staff members to the International Community Corrections Conference in Columbus Ohio from 9/14 till 9/19. During the conference, staff members attended workshops on topics such as: methods to impact desistance; risk assessment; cognitive-behavioral interventions; motivational interviewing and other complementary strength-based approaches; and trauma informed care and staff resiliency. In addition, the staff visited four reentry facilities and received briefings on five programs. These facilities were excellent and employed many of the "best practices" used at PRRS. Those who attended the conference provided a thorough presentation at the October monthly staff meeting. Some of the ideas brought back to improve PRRS include: employing a vastly more sophisticated MIS to ensure accountability and recordkeeping; an automated medication dispensary machine; graduated privileges arranged by living units; day reporting services, and improved mental health and trauma-informed care.
- 2. GED Lab:** PRRS is setting up an educational computer lab. Beginning in 2014, the GED test is administered online and the lab will assist Residents better prepare for the GED test.
- 3. Medication-Assisted Treatment:** PRRS has been reviewing protocols with HHS in prescribing Vivitrol as a medication to assist individuals with opioid and alcohol dependencies.
- 4. Future Link:** PRRS Residents continue to enroll in this 14-week college preparatory program based at Montgomery College. The program offers students opportunities to explore and conduct informational interviews with professionals in careers of interest. On December 17, Future Link will hold a graduation and one of the graduates is a PRRS Resident.
- 5. Servsafe Training:** PRRS continues to host a two-day training conducted by the Restaurant Association's Maryland Education Foundation on safe food handling practices. The training prepares individuals to earn a Servsafe certificate which is valued in the food services industry. Classes were offered on November 10 & 11 and four PRRS Residents participated.
- 6. Spanish PRRS Resident Guidebook:** PRRS has published a revised Resident Guidebook in Spanish that incorporates a number of updated policies, procedures, and practices. It is available on the DOCR and PRRS website.

Security

- 1. Escapes:** No escapes occurred since the last CAC meeting.
- 2. Use of Force Incident:** On 11/7/14, PRRS staff needed to use force to place restraints on a Resident who was being returned to the jail for testing positive for K2. No injuries occurred, and a critical debriefing held on 11/20 determined that the use of force was appropriate and proportional to the situation. There was some speculation that the Resident was under the influence of K2 at the time of the incident.

- 3. Sex Offender Registry Coordination:** On December 2, PRRS staff met with the compliance officers with the Montgomery County Police Department to better coordinate the registration process for individuals required to register as sex offenders under Maryland law.

Facility

- 1. American with Disability Act Renovation Project:** Phase 2 of the ADA project at PRC is slated to begin March 2015 and will make several Resident rooms and living units compliant with ADA requirements. Also, PRC will redesign the front lobby desk and the outdoor courtyard to make them accessible for individuals with disabilities.
- 2. Video Surveillance System:** PRRS has received approval to upgrade equipment and software to enhance the use of this system as an investigatory tool.
- 3. Bathroom Renovations:** Four bathrooms were renovated by a company contracted by the County's Department of General Services. These bathrooms were leaking water into other areas of the building and needed immediate attention. Fifteen other bathrooms in poor condition have also been identified and are next in line for renovation.
- 4. Furniture:** PRRS has ordered additional metal lockers, beds, and bureaus to replace broken furniture in the rooms. As PRRS is maintaining a relatively high count and is preparing for accreditation audits in February, it is working diligently to ensure that all rooms are online.

Personnel Changes

1. Full-time Staff

- Assistant Food Services Manager Myron Thompson has been assigned to PRRS. Correctional Dietary Supervisor Robyn McCormick was reassigned to MCDCC, and she was recognized by PRRS staff for her years of dedicated and professional service at PRC.
- Resident Supervisor Luke Czochara joined PRRS on 11/30. For the past year, he was a correctional officer at MCCF, and had worked two years prior as a correctional officer for the state. He earned his Bachelor of Art in Criminal Justice from William Patterson University

2. Training/Professional Development

- Resident Supervisor Jonathan Streat was promoted to Resident Supervisor II after successfully completing all RS requirements in his first year with PRRS.
- Case Manager III Ashley Spencer passed a rigorous examination for mental health counselors in August and is now a Licensed Graduate Professional Counselor (LGPC). This licensure accompanies her master's degree in mental health counseling.

Visits/Events/Meetings (exclusive of those mentioned before)

1. 9/11/2014: Presentation to an evening Criminal Justice class at George Mason University.
2. 9/14/2014: Residents assist MC Human Rights Friendship Picnic and perform community service.
3. 9/14/2014: Presentation to GMU criminal justice class taught by Faye Taxman.
4. 9/16/2014: Delegation from Shanghai courts and corrections visited PRC.
5. 10/30/2014: PRRS participated in a career fair at The Universities of Shady Grove.
6. 11/17/2014: Prof. Les Kaplan's American University Justice and Law Class visiting PRC.
7. 11/17/2014: Butler County, PA correctional staff visit to PRC.

8. 11/17/2014: Meeting with Asst. minister of Unitarian Congregation on their prison ministry.
9. 11/20/2014: Leadership Montgomery Senior Class visit to PRC.
10. 11/21/2014: Prof. Bea Simon American University class PRC.
11. 11/24/2014: Prof. Peter Leone's University of Maryland College Park class visit PRC.
12. 11/25/2014: Prof. Jim Shannon's UMBC @ Shady Grove class on Social Policy visit PRC.
13. 11/26/2014: Met with representatives of Prince George's Reentry Roundtable.

Program Statistics

Population Served

	Sep	Oct	Nov
PRRS Average Daily Population	147.3	153.5	159.2
Local Jail Resident Subgroup	125.2	130.1	135.5
Federal Resident Subgroup	22.1	23.4	23.8
Female Subgroup	14.2	13.0	12.7
Home Confinement Subgroup	7.4	13.9	15.6

Figure 1

Admissions CY 2014

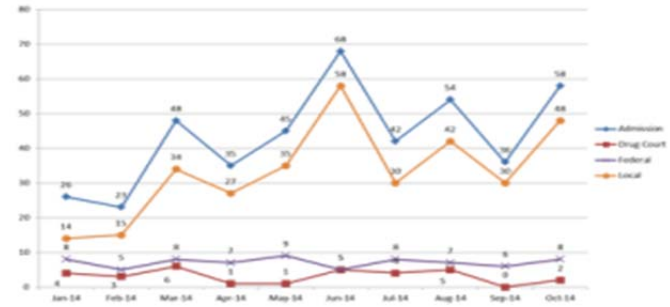


Figure 2

Work Release Statistics (October 2014)

Work Release Performance Measures														
DATE: October 2014														
Employed Residents										Unemployed Residents				
Unit	Wed 12am Count	FT Community Employment > 32 Hours Per Week	PT Community Employment 31-25 Hours Per Week	PT Community Employment < 25 Hours Per Week	Inside Employment (FN 2)	Approved Alternative Placement (FN 3)	Total	Community Work Employed %	Work Release Engaged %	Transfer < 21 Days	Transfer > 21 Days	Total	Unemployment Rate	Unemployment Rate Net New Arrivals
1	11	5	1	0	3	0	9	54.5%	81.8%	1	1	2	18.2%	9.1%
2	46	20	5	1	7	2	35	56.5%	76.1%	9	2	11	23.9%	4.3%
3	41	21	6	1	4	1	33	68.3%	80.5%	6	2	8	19.5%	4.9%
4	59	20	3	0	8	2	33	39.0%	55.9%	17	3	20	33.9%	5.1%
Total	157	66	15	2	22	5	110	54.6%	70.1%	33	8	41	26.1%	5.1%

Footnote 1: Data collection on Wednesday using midnight count and inclusive of releases later that day. (Data entered in green cells only)
 Footnote 2: Individuals are assigned to inside worker status for programmatic and security reasons.
 Footnote 3: Individuals approved due to medical/disability/retirement factors

Figure 3

Income Earned by Program Participant

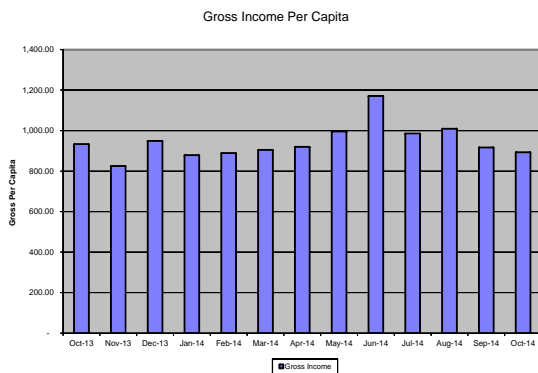


Figure 4

Program Exit Statistics

PRRS Program Exit Statistics														
2014 Month	Exits by Resident Type				Program Exit Type								Median Length of Stay in PRRS	Employment % for Time Served Released
	Total	Local	Fed	Drug Court	Time Served	%	Revocation	%	Admin Removal	%	Escape	%		
March	39	29	6	4	34	87.2%	2	5.1%	3	7.7%	0	0.0%	91	64.7%
April	41	28	7	6	36	87.8%	4	9.8%	0	0.0%	1	2.4%	83	77.8%
May	39	26	8	5	30	76.9%	6	15.4%	2	5.1%	1	2.6%	87	90.0%
June	32	24	6	2	25	78.1%	3	9.4%	3	9.4%	1	3.1%	81.5	80.0%
July	43	36	5	2	32	74.4%	8	18.6%	3	7.0%	0	0.0%	93	81.3%
August	50	49	9	0	39	78.0%	7	14.0%	4	8.0%	0	0.0%	94	70.0%
Sept	40	32	5	3	30	75.0%	7	17.5%	3	7.5%	0	0.0%	98	80.0%
Oct	48	35	8	5	41	85.4%	2	4.2%	5	10.4%	0	0.0%	84.5	56.1%
Total	332	259	54	27	267	80.4%	39	11.7%	23	6.9%	3	0.9%	89.0	75.0%

Figure 5

CY 2014 Escape Incidents/Dispositions

Escape Date	Return Date	Fugitive Days	Escape Charge	Last Name	First Name	Description	Disposition
1/15/14	1/15/14	0	2 nd Degree	Martin	Damon	Stole video games at retailer on Rockville Pike while out on approved pass for AA meeting. Arrested and charged with escape as he was not approved to be in the store	Found guilty. Sentenced 4/10/14; 6 month sentence
4/23/14	4/23/14	0	2 nd Degree	Butler	Ontae	Failure to return from approved pass. 12 hours unaccountable. Finally located at Holy Cross Hospital. 2 nd degree escape.	6/3/14 Plead guilty; 6 month sentence
5/21/14	5/21/14	0	1 st Degree	Martin	Arnold	Fled PRC during fire evacuation at 11:40pm previous evening. Attempted car jacking and secured by PRRS on Nebel Street. Arrested by MCPD. Self-reported under the influence of K2	Plead Guilty 2 Year Sentence on 7/28/2014
6/8/14	6/12/14*	4	2 nd Degree	Wright	Robert Louis	Failed to return to PRC from an authorized pass to attend a church service. Arrested in New Jersey. *will be extradited to Montgomery County	Plead Guilty 18 Month Sentence on 8/15/2014
6/30/14	6/30/14	0	2 nd Degree	Starks	Mathew	Checked out for work at 5:20am and failed to return to PRC after finding out that his work assignment was cancelled. Returned to PRC at 8:30am.	Plead Guilty 3 Month Sentence on 9/2/14

Figure 6

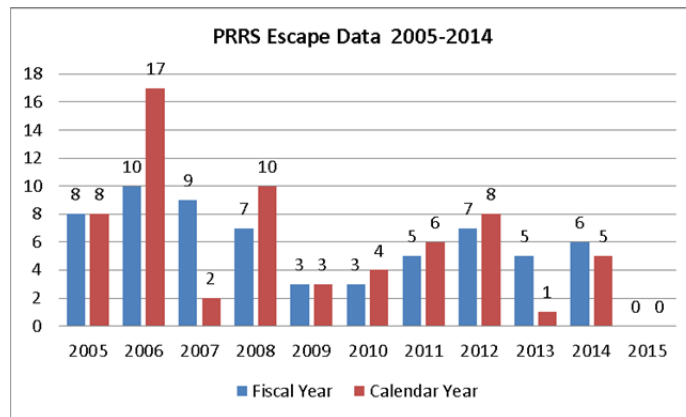


Figure 7

October Suspensions

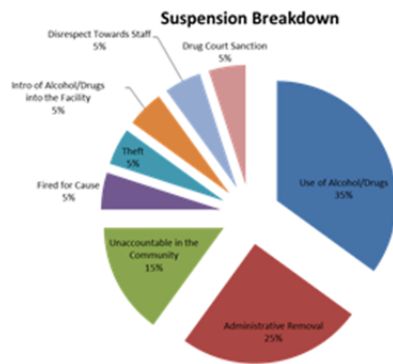


Figure 8

Monthly Suspensions 10/1/2014 – 10/31/2014		
Reasons	Number of Incidents	Unit Location
Adm Removal (Medical/Mental Health/ Open Warrant)	5	Units 2&3
Drug Court Sanction	1	Unit 4
Positive Drug/Alcohol Use	7	Units 2, 3 & 4
Theft	1	Unit 2
Fired for Cause	1	Unit 2
Unaccountable in the community	2	Units 2 & 3
Fail to follow pass procedure	1	Unit 4
Intra Drugs into Facility (K2)	1	Unit 4
Disrespect Towards Staff	1	Unit 4
Total Suspensions:	20	_____

Figure 9

PRRS Recidivism Reconviction and Return Indices					
Release Index	Months/Years of Release	# of Records in Timespan	# of Individuals with >=1 Convictions	Average Days to Charge	Conviction and Return Rates
1 Year	Total	492	47	150	9.6%
	July 2012	24	3	208	12.5%
	August 2012	25	1	105	4.0%
	September 2012	21	4	136	19.0%
	October 2012	31	2	188	6.5%
	November 2012	24	4	110	16.7%
	December 2012	37	2	200	5.4%
	January 2013	32	5	116	15.6%
	February 2013	34	1	108	2.9%
	March 2013	32	3	139	9.4%
	April 2013	39	7	92	17.9%
	May 2013	34	2	128	5.9%
	June 2013	40	1	124	2.5%
	July 2013	38	1	256	2.6%
	August 2013	42	6	208	14.3%
	September 2013	31	3	124	9.7%
	October 2013	32	2	164	6.3%
3 Year	Total	521	156	396	29.9%
	July 2010	37	9	526	24.3%
	August 2010	43	17	440	39.5%
	September 2010	34	9	436	26.5%
	October 2010	42	10	481	23.8%
	November 2010	31	9	323	29.0%
	December 2010	31	10	309	32.3%
	January 2011	23	6	536	26.1%
	February 2011	25	8	499	32.0%
	March 2011	37	9	447	24.3%
	April 2011	20	8	242	40.0%
	May 2011	29	10	392	34.5%
	June 2011	43	12	463	27.9%
	July 2011	23	7	259	30.4%
	August 2011	29	8	300	27.6%
	September 2011	31	11	356	35.5%
	October 2011	43	13	329	30.2%
Notes					
1. Data gathering began 7/13 and new data is collected monthly on PRRS prior releases.					
2. Recidivists events are tabulated for those released one year and three years prior.					
3. Recidivism and Return indices are defined as convictions or violations of probation and parole during one and three years. Arrests and pending matters are not included.					
4. Probation before Judgement, non-incarcerable traffic, and charges that are nolle, dismissed, or result in a not guilty finding are not treated as convictions.					
5. Criminal Justice data used from MD Judiciary Case Search, County CJIS, FBI NCIC, and other data accessible through the MD METERS CJ portal.					

Figure 10