



COVID-19 VACCINES UPDATE @ MAR 15

MONTGOMERY COUNTY DHHS

Note: Estimates based on best available data from 03.15.2021. For the most up-to-date information, please see: montgomerycountymd.gov/covid19/vaccine/#dashboard

COVID-19 CASES PER CAPITA OVER TIME



MONTGOMERY COUNTY | COVID-19 Surveillance

Source: MD iMap | Last updated: 3/15/2021


LINK TO ONLINE
DASHBOARD

Seven-day average number of new confirmed cases per 100k residents

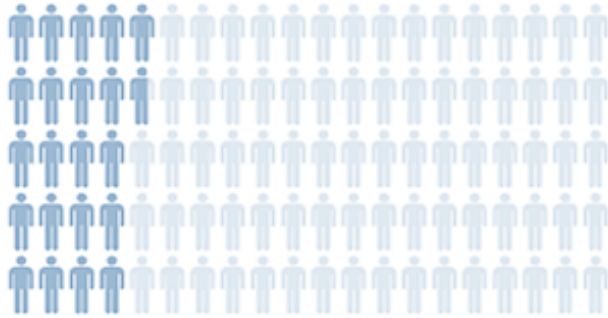


New daily cases



COVID-19 VACCINATIONS—WHERE WE ARE TODAY

COUNTY-WIDE VACCINATIONS



AT LEAST 1 DOSE:
228,266 (21.7%)
STATE-WIDE: 19.8%

BY AGE GROUP
IN MONTGO
75+: 74%
65-74: 62%



FULLY VACCINATED:
118,157 (11.2%)
STATE-WIDE: 11.1%

BY AGE GROUP
IN MONTGO
75+: 43%
65-74: 24%

Incl. J&J
single dose

State-wide, Hospitals administered 36% of vaccines, local Health Departments account for 33%, and Long-term Care, Retail, and “Other” account for 31%.

VACCINE TYPE

Moderna
63%

Pfizer
36%

J&J
1%

PRIORITY GROUPS: STATUS

For full and current descriptions of the priority groups, please see montgomerycountymd.gov/covid19/vaccine/priority.html

▶ **ACTIVE** ▶ **INITIATING** || **PLANNING**

Priority 1A

- ▶ Tier 1: Hospitals / Assisted living
- ▶ Tier 2: Urgent care workers
- ▶ Tier 3: Public safety / other healthcare / shelter staff

Priority 1B

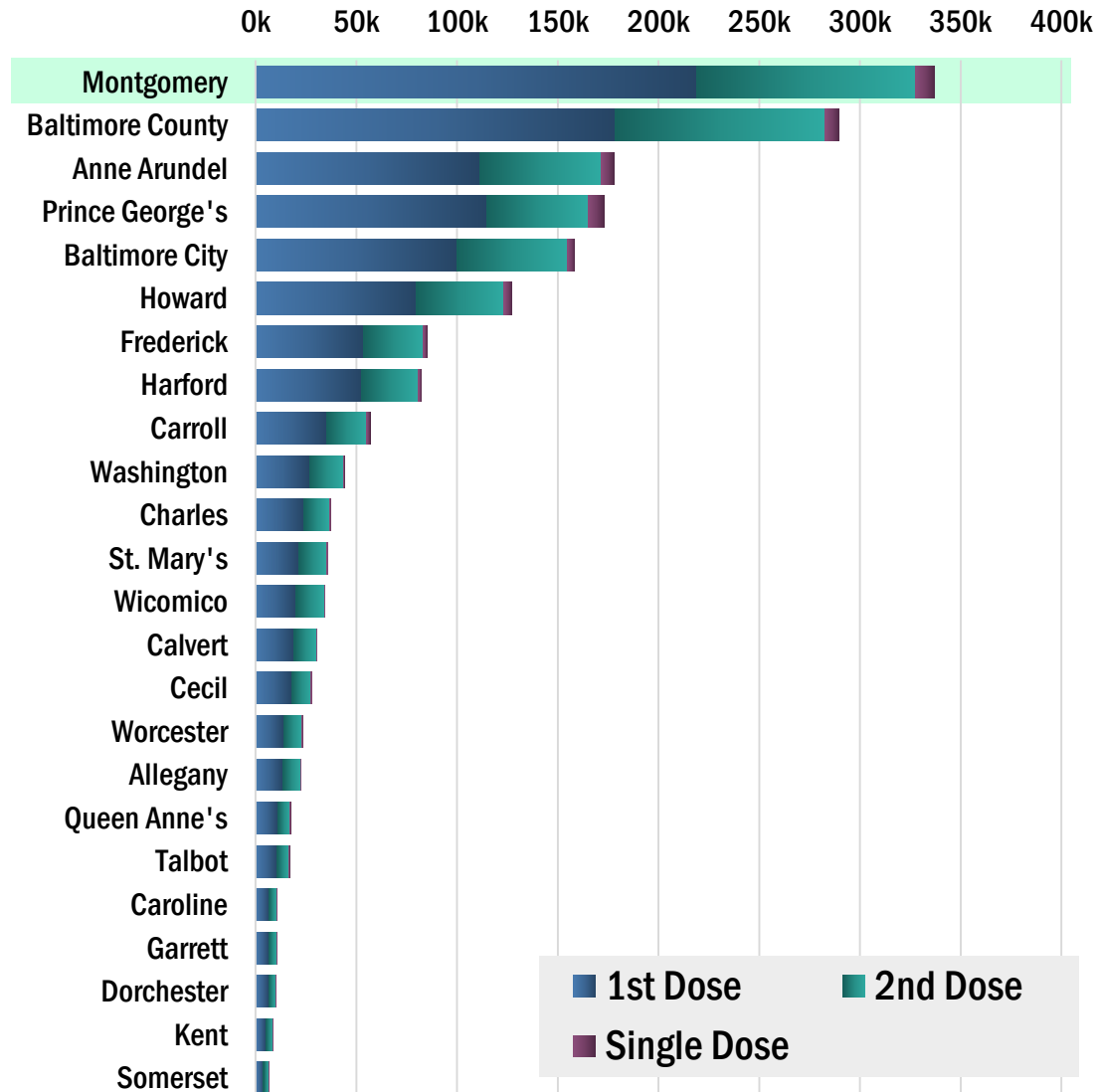
- ▶ Tier 1: Adults 75+
- ▶ Tier 2: Essential frontline / homeless / detainees
- ▶ Tier 3: Essential manufacturing workers

Priority 1C

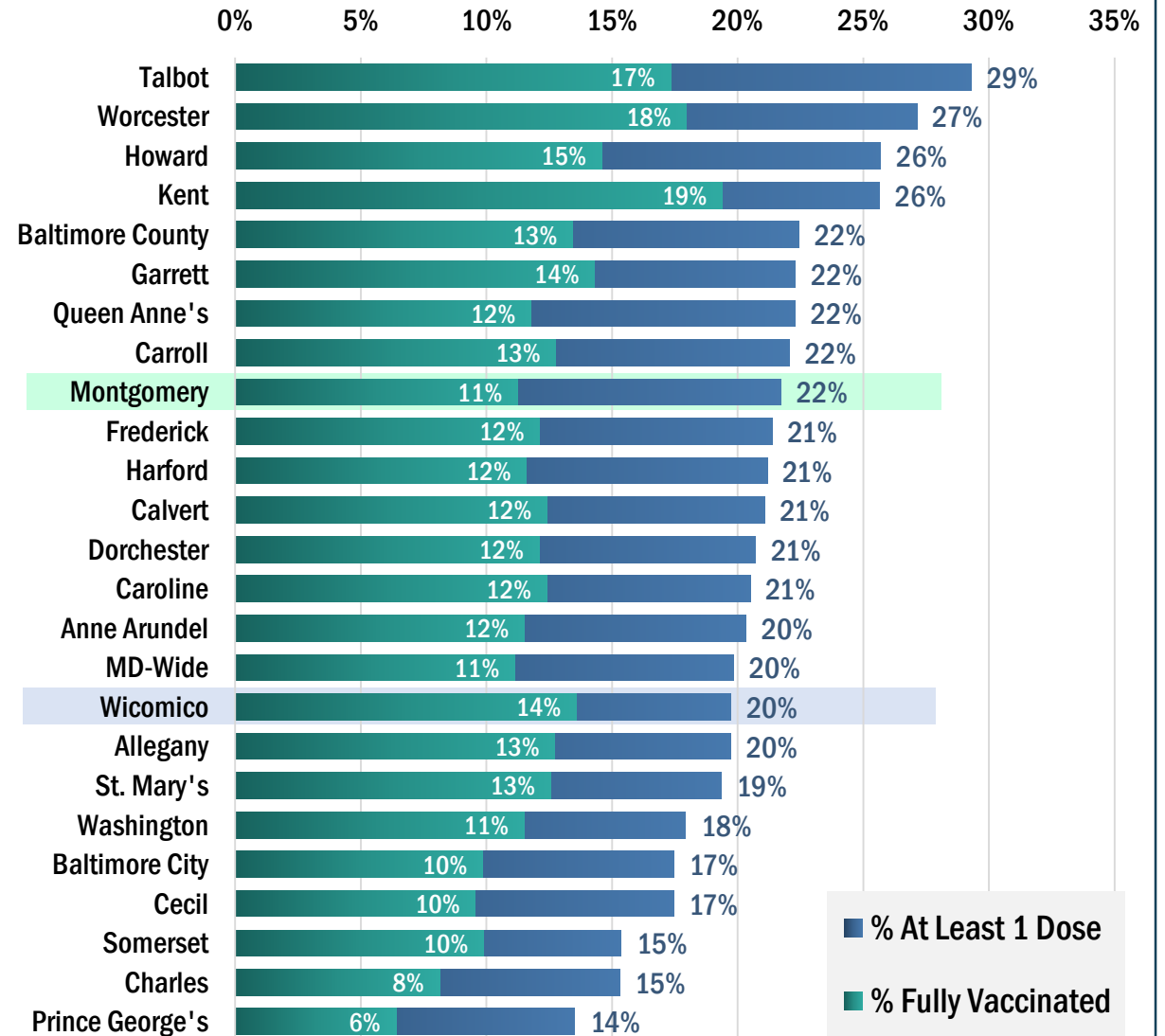
- ▶ Tier 1: Adults 65-74
- || Tier 2: High risk medical conditions
- || Tier 3: Other high risk

COUNTY-WIDE VACCINATIONS (ALL SOURCES): MD COMPARISONS

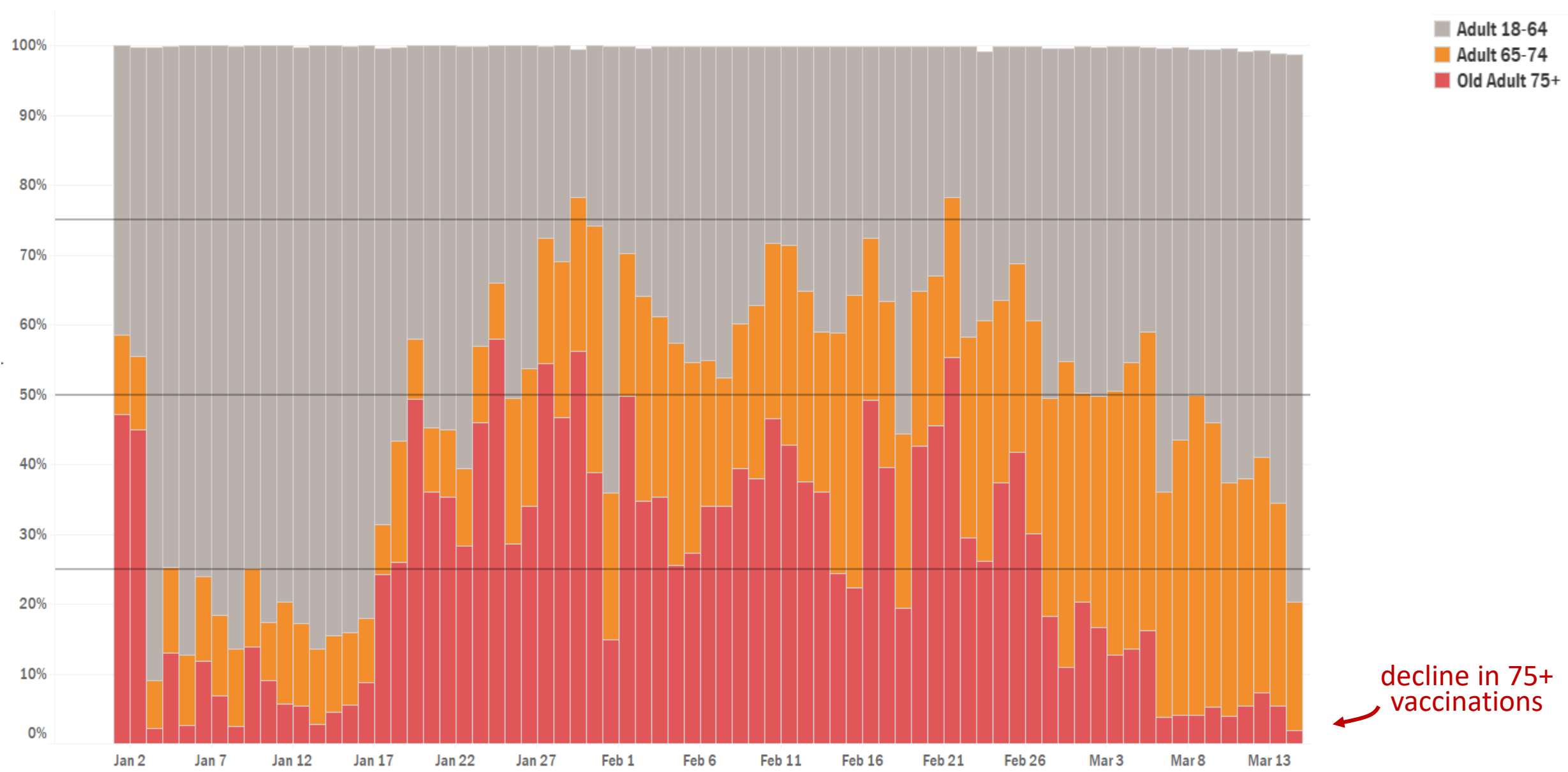
OF VACCINES ADMINISTERED



% OF POPULATION VACCINATED



VACCINATIONS OF COUNTY RESIDENTS BY AGE GROUP OVER TIME

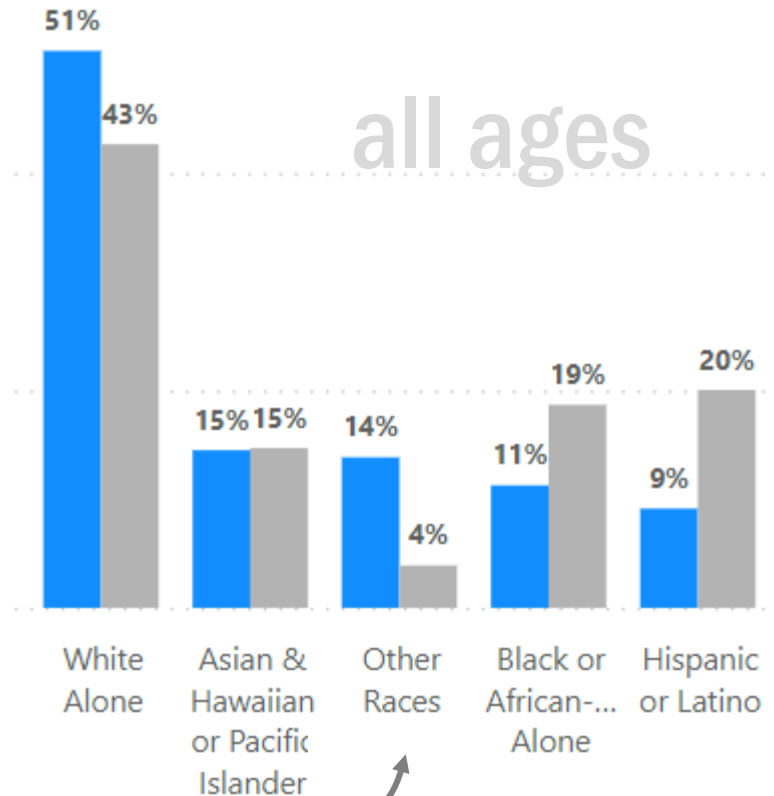


decline in 75+ vaccinations

VACCINES ADMINISTERED BY RACE/ETHNICITY

SHARE RELATIVE TO POPULATION

● % Vaccinated ● % County Population

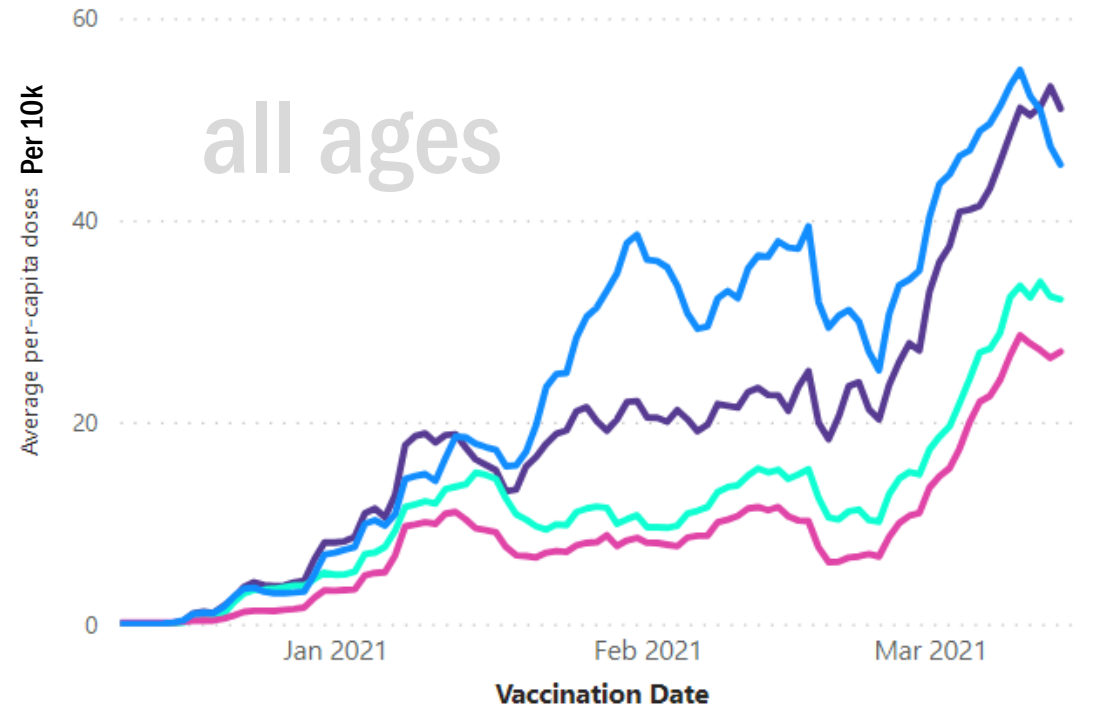


Vaccination records have a high number of patients classified as "other" race

PER CAPITA

Seven-day average doses administered per 10k residents by the top four most populous races and ethnicities

● Asian & Native Hawaiian or Pa... ● Black or African-American... ● Hispanic or Latino ● White Alone



Identified gender of residents who have received a vaccine



Excl. 10% not reporting race/ethnicity for vaccinations

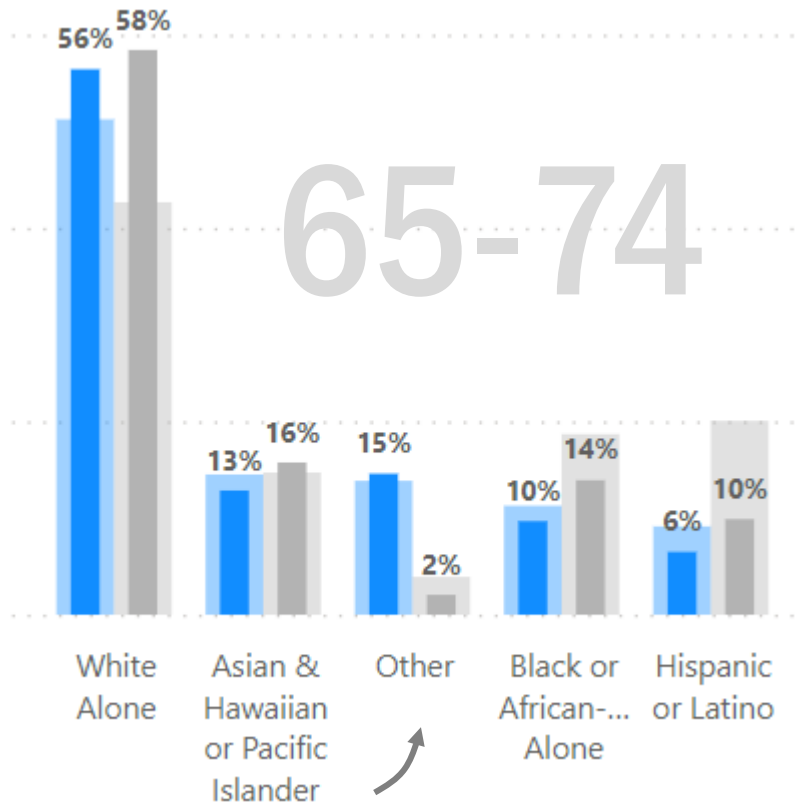
SHARE OF TOTAL

SOURCE: IMMUNET and COUNTYSTAT (03.14)

VACCINES ADMINISTERED BY RACE/ETHNICITY: 65-74 (59,406 1ST DOSES)

SHARE RELATIVE TO POPULATION

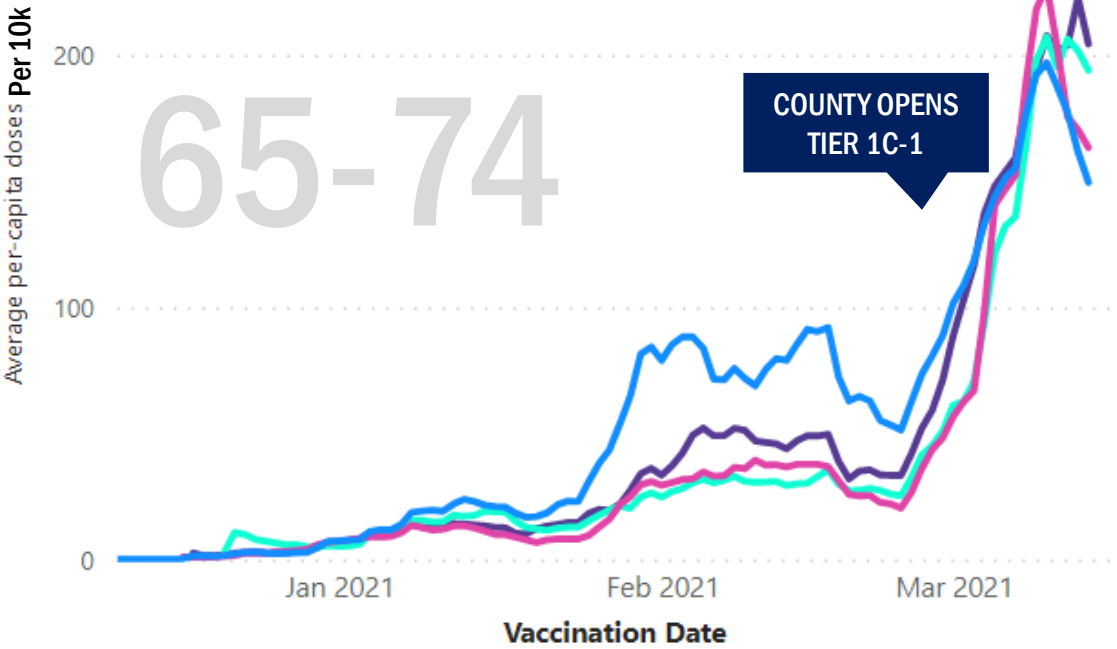
● % Vaccinated ● % County Population



Vaccination records have a high number of patients classified as “other” race

PER CAPITA
Seven-day average doses administered per 10k residents by the top four most populous races and ethnicities of residents age 65-74 years old

● Asian & Native Hawaiian or Pa... ● Black or African-American... ● Hispanic or Latino ● White Alone



Identified gender of residents age 65-74 Years Old who have received a vaccine

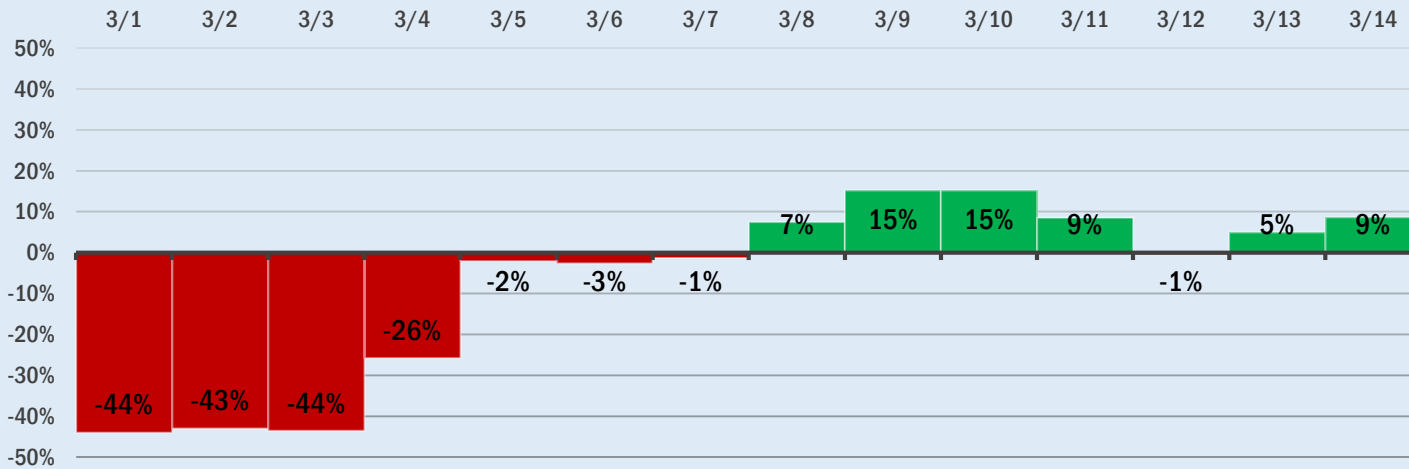


Excl.11% not reporting race/ethnicity for vaccinations. Light shaded bars in background show share for all ages for context.

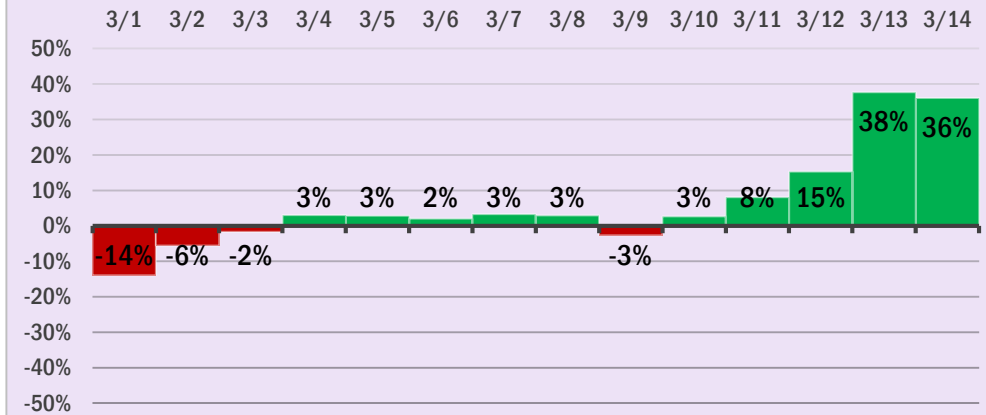
SHARE OF TOTAL

DAILY PER CAPITA VACCINATIONS RELATIVE TO WHITE NH: 65-74

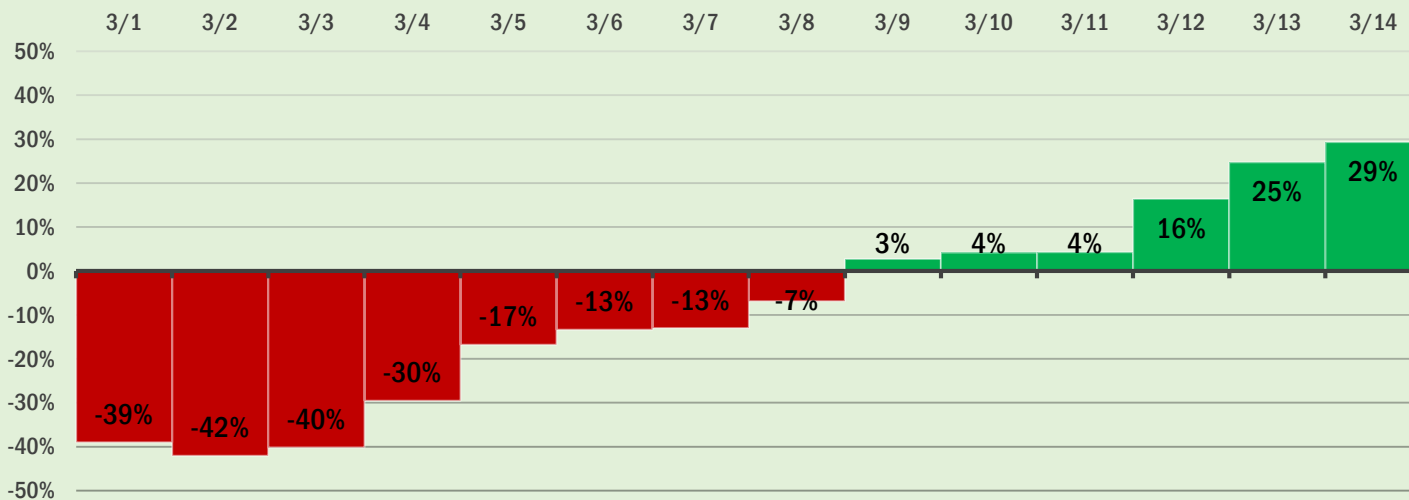
Hispanic Per-Capita Daily Vax Rate Relative to White (65-74)



Asian Per-Capita Daily Vax Rate Relative to White (65-74)



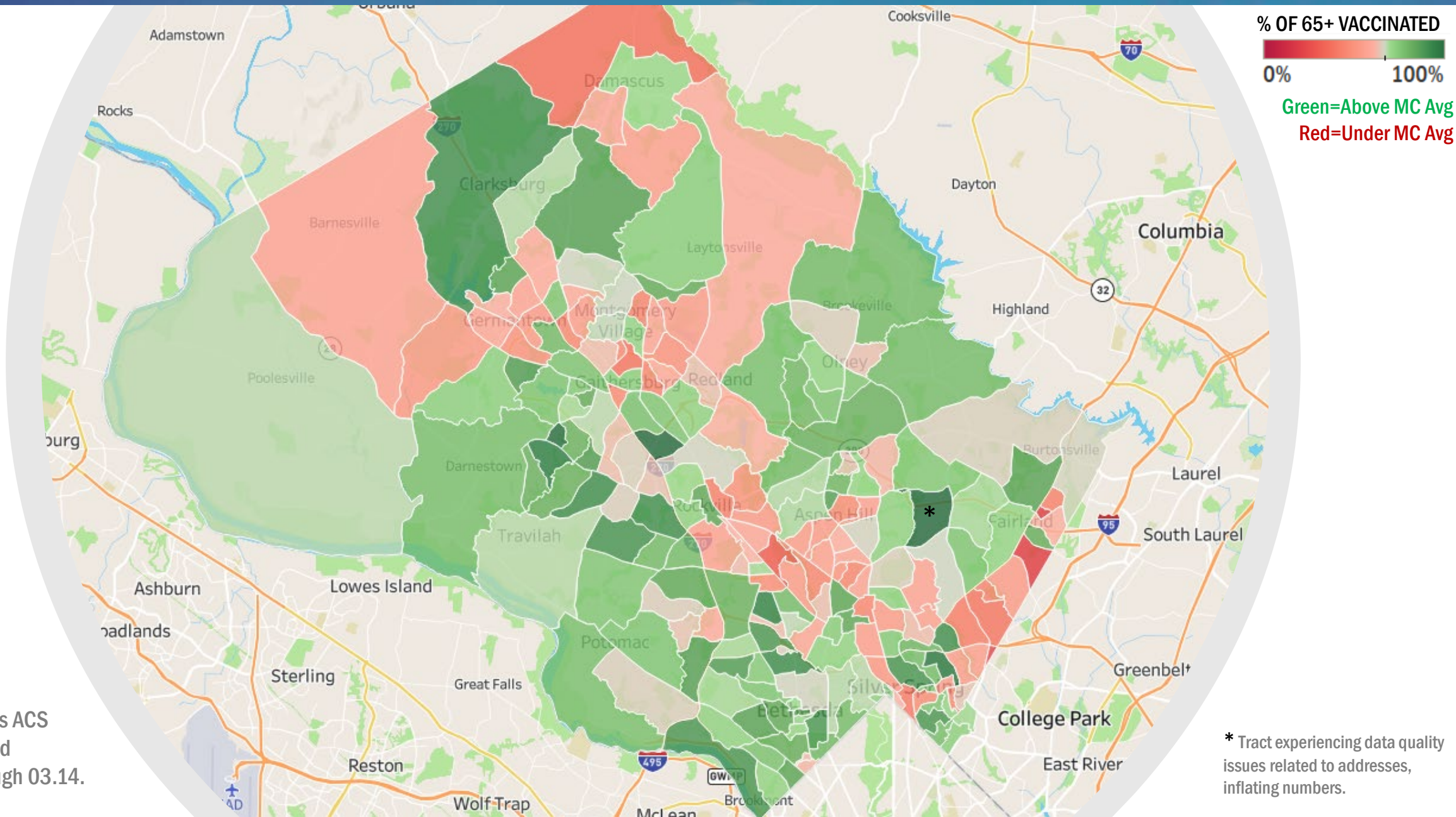
Black/AA Per-Capita Daily Vax Rate Relative to White (65-74)



Positive numbers indicate a higher per-capita vaccination rate relative to White Non-Hispanic residents (among 65-74). Negative numbers indicate a lower per-capita rate.

Since second week of March, rates have notably improved to allow minority groups to catch-up.

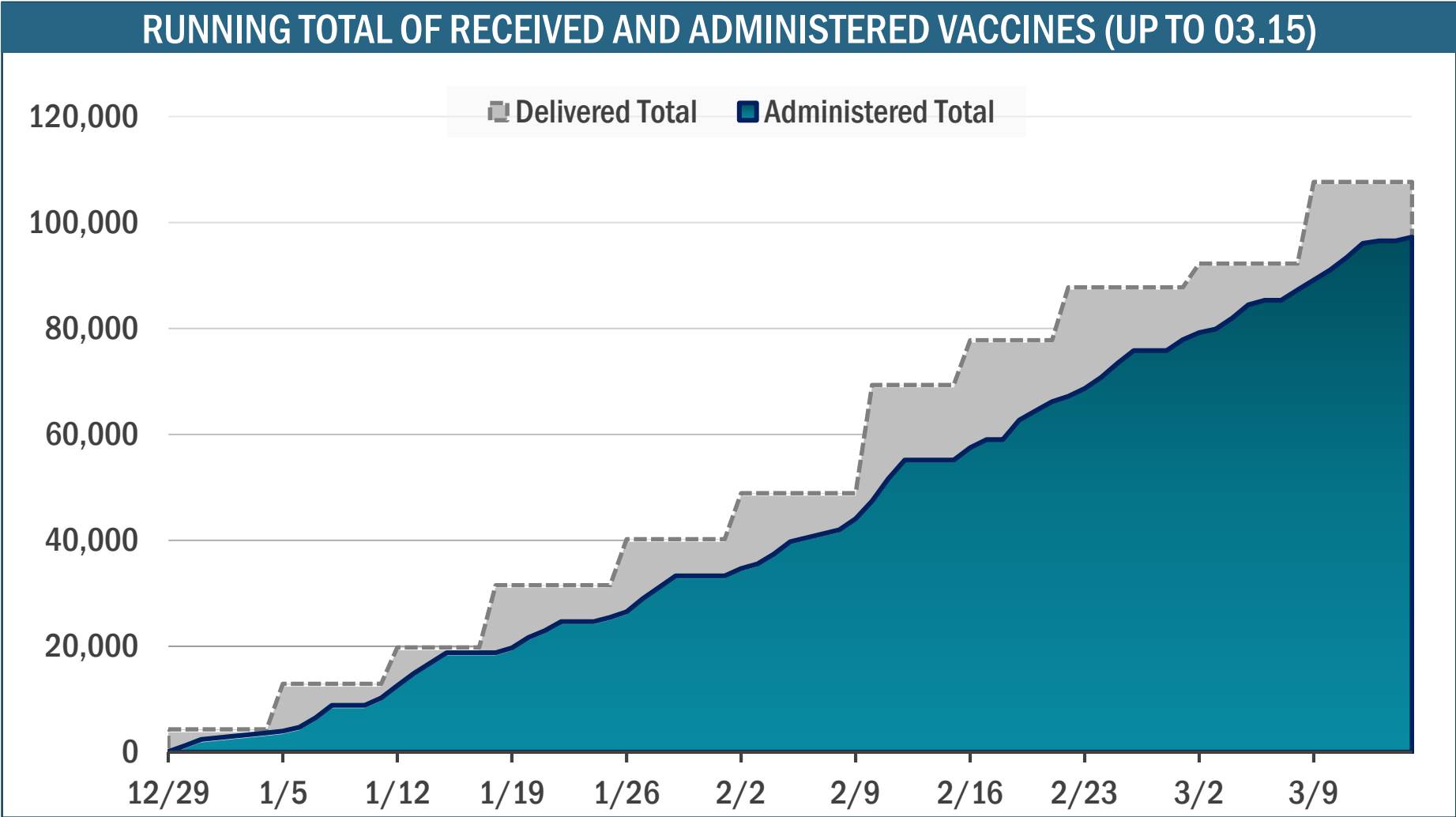
GEOGRAPHY: PERCENT of 65+ VACCINATED (AT LEAST ONE DOSE)



COUNTY GOVERNMENT COORDINATED VACCINES (LOCAL TRACKING)

Primary vaccine sites include Richard Montgomery HS and Quince Orchard HS.

NUMBERS ARE PRELIMINARY



ADMINISTERED (ALL TIME)

97,261

RANK: 1/24 MD COUNTIES

ALLOCATED (ALL TIME)

107,650

RANK: 1/24 MD COUNTIES

ADMINISTERED
LAST 7 DAYS

11,933

(6,567 1st doses + J&J)

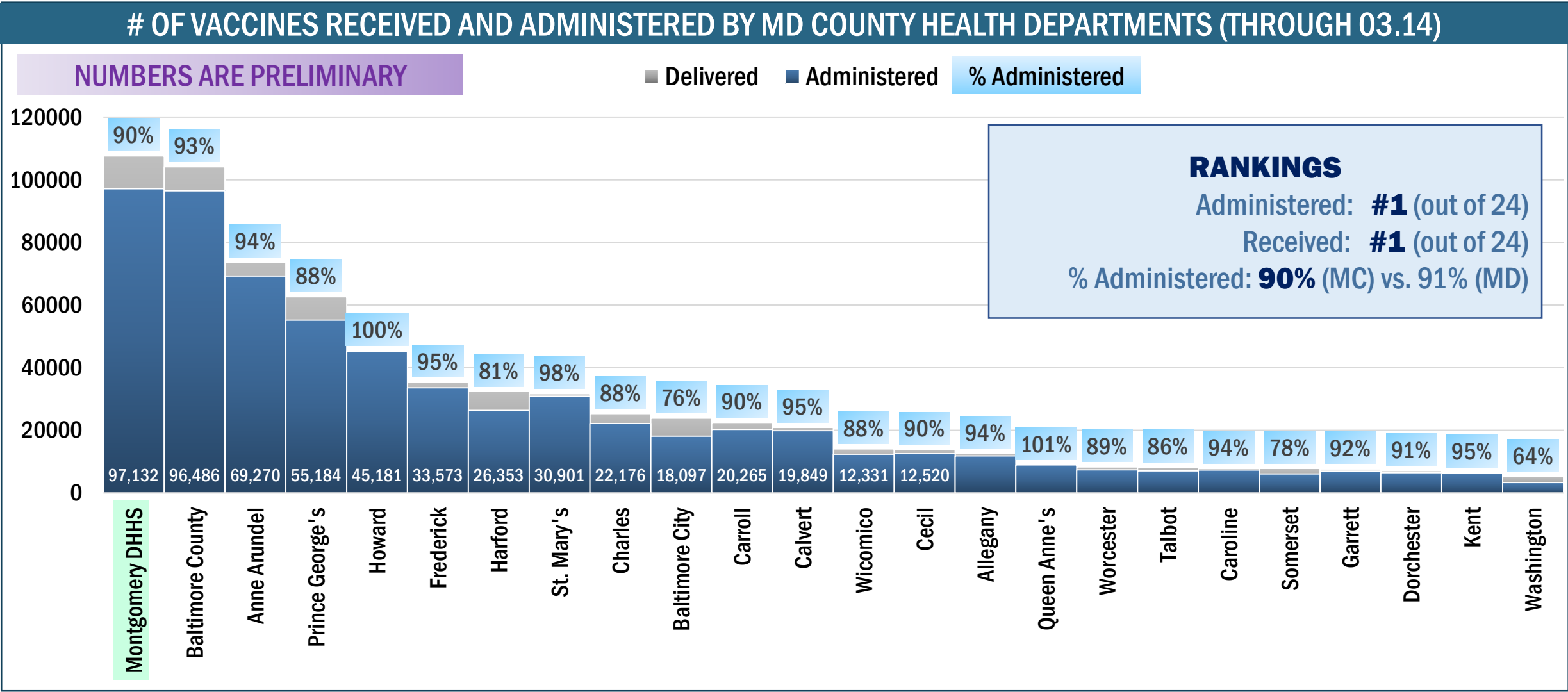
EXPECTED DELIVERY 03.16

4,500

FIRST DOSES

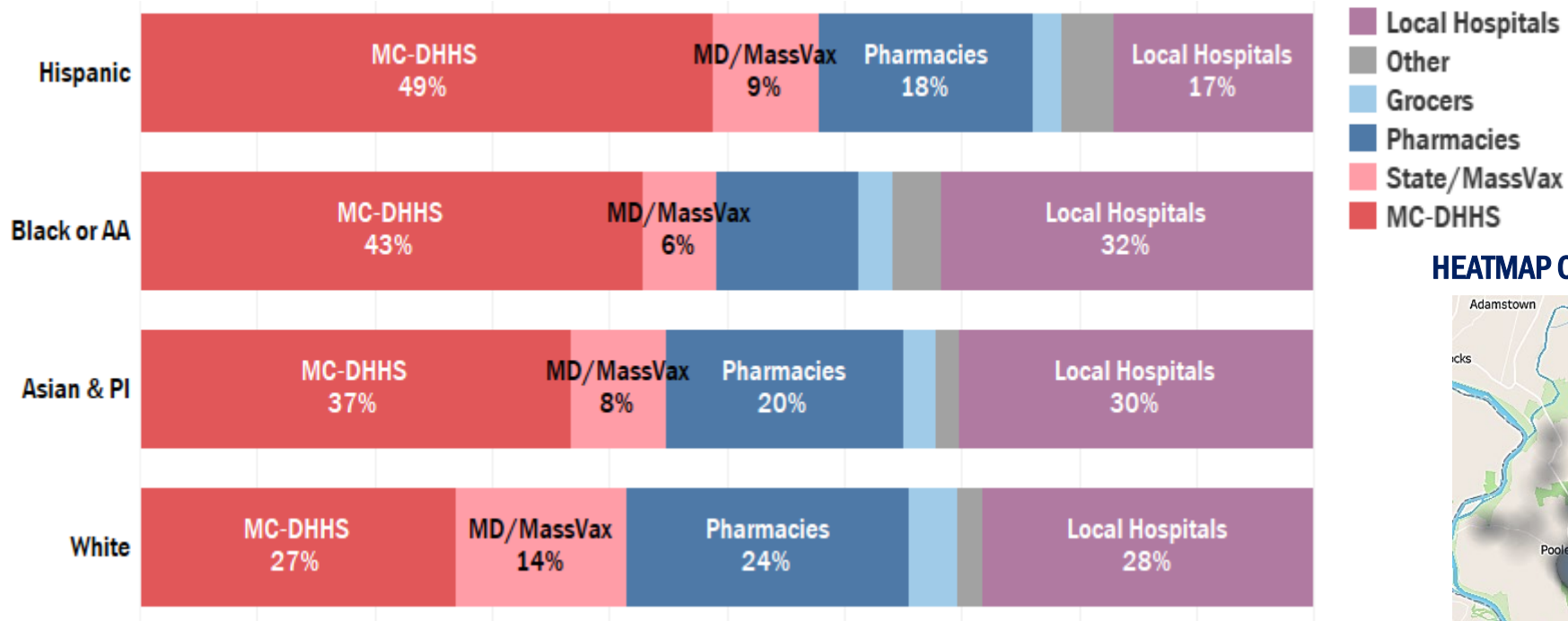
LOCAL HEALTH DEPARTMENTS: MD COMPARISONS

Note: This slide uses State reporting which is not as real-time as the local tracking on the previous slide.
These preliminary State numbers are used to allow for an apples-to-apples comparison to other counties.



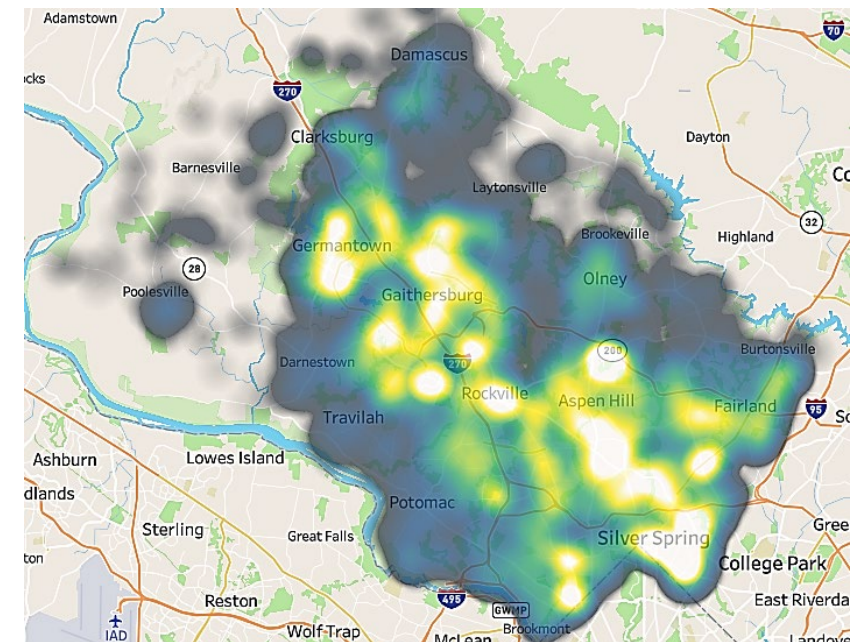
WHO IS VACCINATING WHOM (65+)? PROVIDER BREAKDOWN BY RACE/ETH

LAST 14 DAYS OF REPORTING | FIRST OR SINGLE DOSES ONLY



DHHS primarily
vaccinating residents
65+ located in high
impact neighborhoods

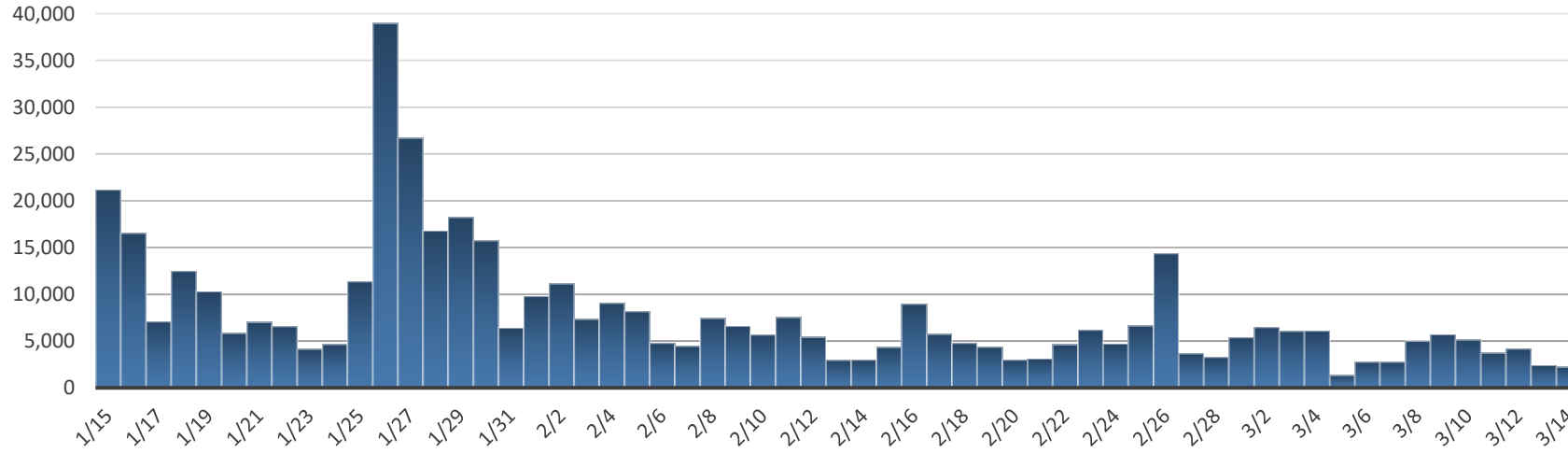
HEATMAP OF DHHS VACCINATED RESIDENTS 65+ LAST 14 DAYS



Minority residents disproportionately rely on the public vaccination program operated by MC-DHHS. Over the past 14 days of reporting, **DHHS accounts for half of vaccinated Hispanic residents and 43% of Black/AA residents aged 65+.** By improving access for underserved communities, [DHHS' Equity Framework](#) has helped improve equity in vaccination administration.

PRE-REGISTRATION STATISTICS (THROUGH MARCH 14)

PRE-REGISTRATIONS BY DAY



LAST 7 DAYS

28,410

ACTIVE PRE-REGISTRATIONS

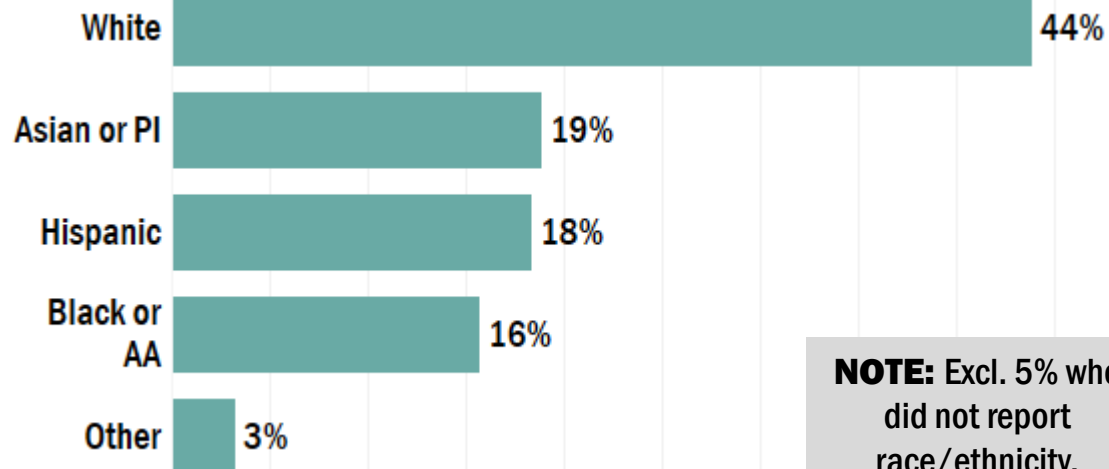
203,774

Excl. vaccinated
and duplicates

ALL-TIME

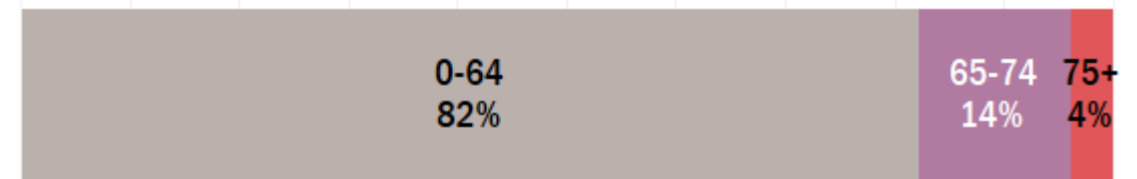
463,141

BY RACE AND ETHNICITY – LAST 7 DAYS



NOTE: Excl. 5% who
did not report
race/ethnicity.

AGE GROUP - LAST 7 DAYS

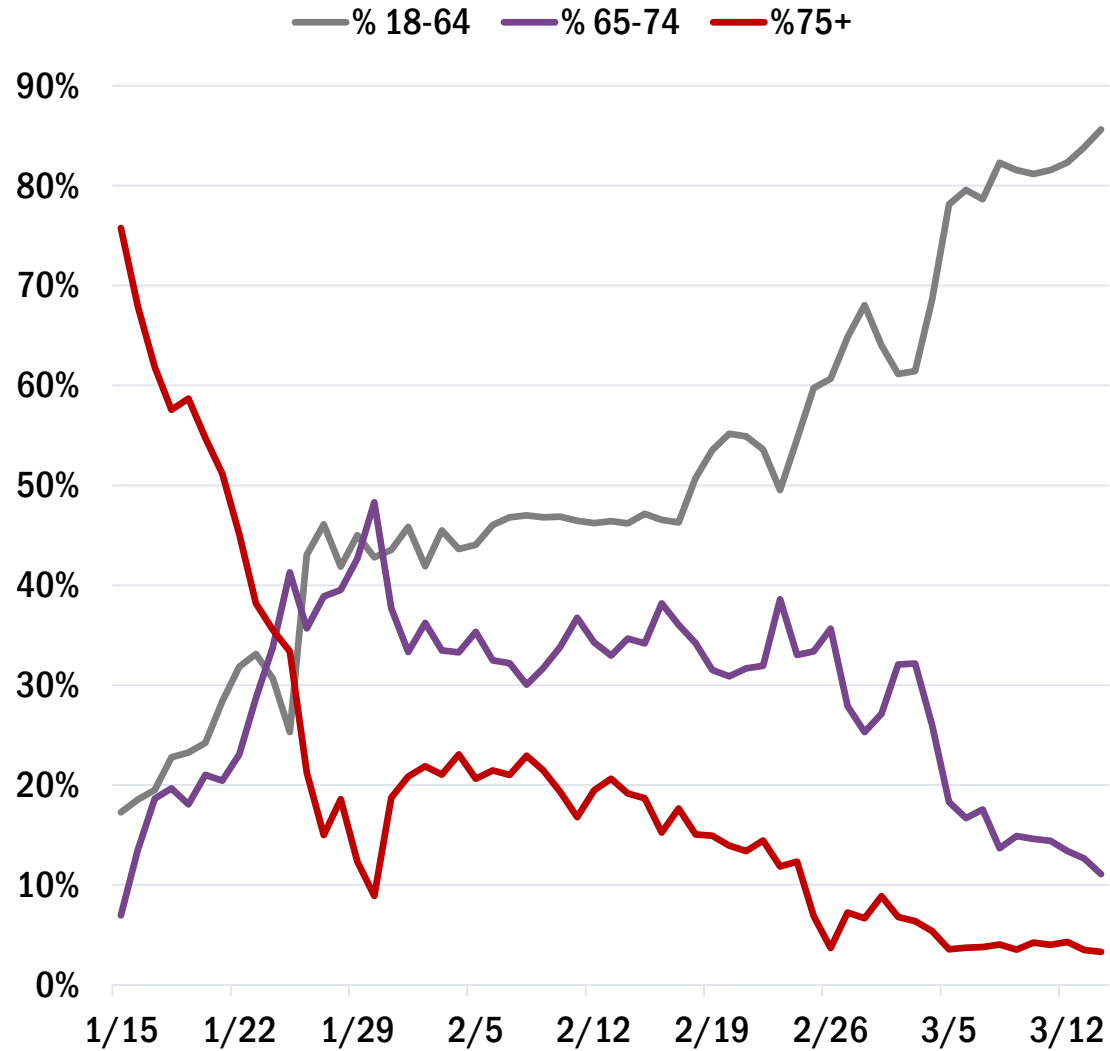


GENDER – LAST 7 DAYS

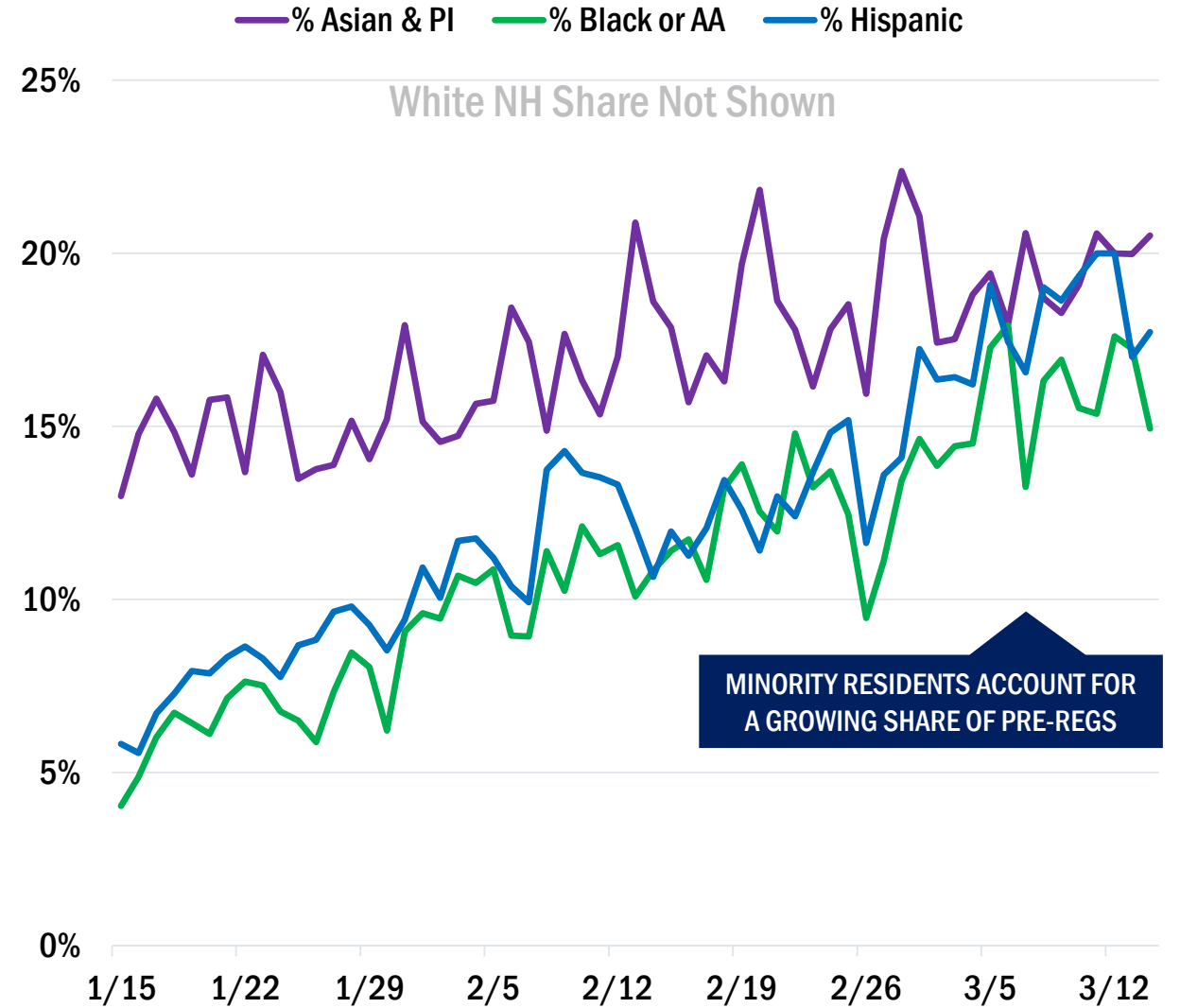


PRE-REGISTRATION STATISTICS (THROUGH MARCH 14)

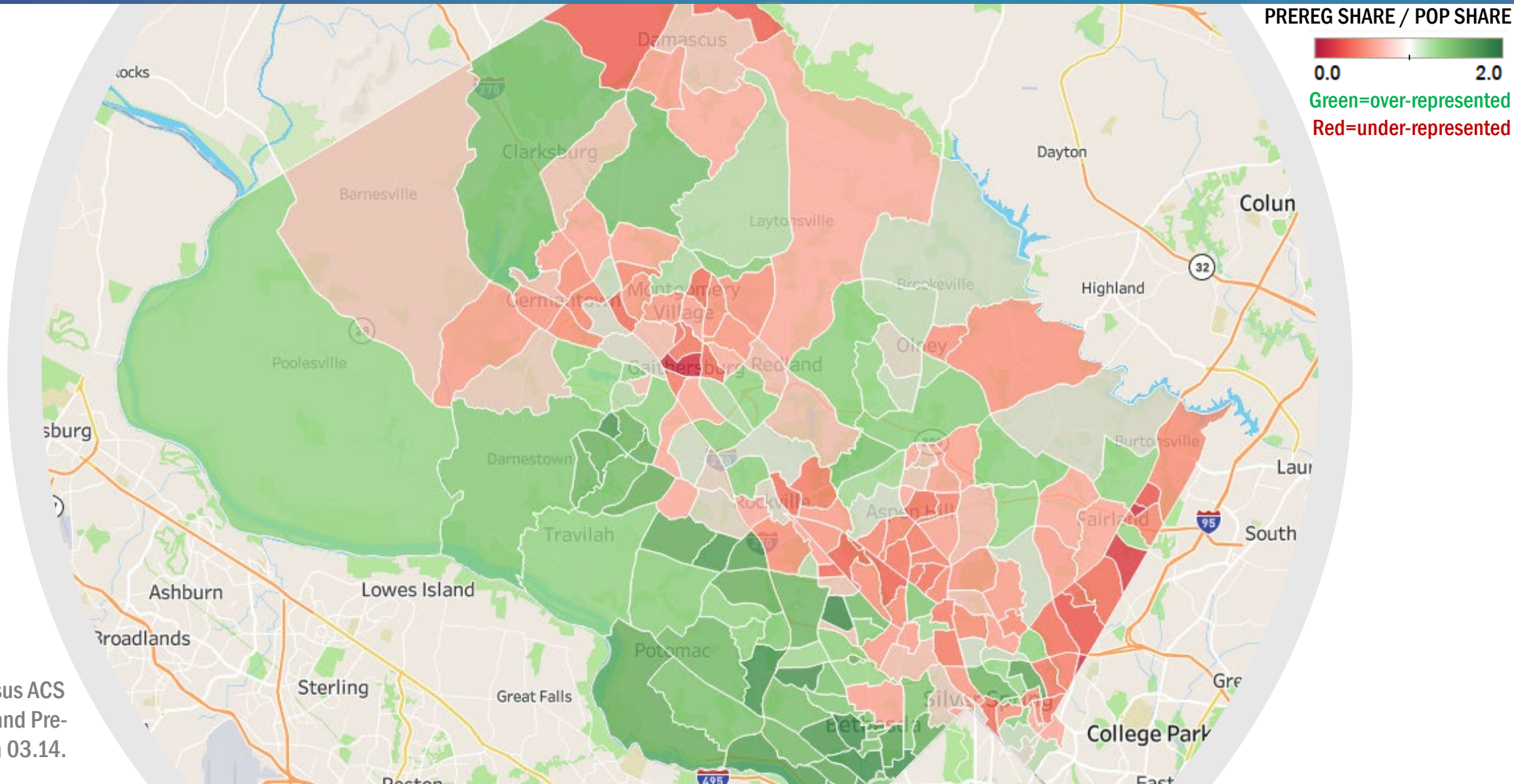
PRE-REGISTRATIONS BY DAY: SHARE BY AGE GROUP



PRE-REGISTRATIONS BY DAY: SHARE BY RACE/ETH

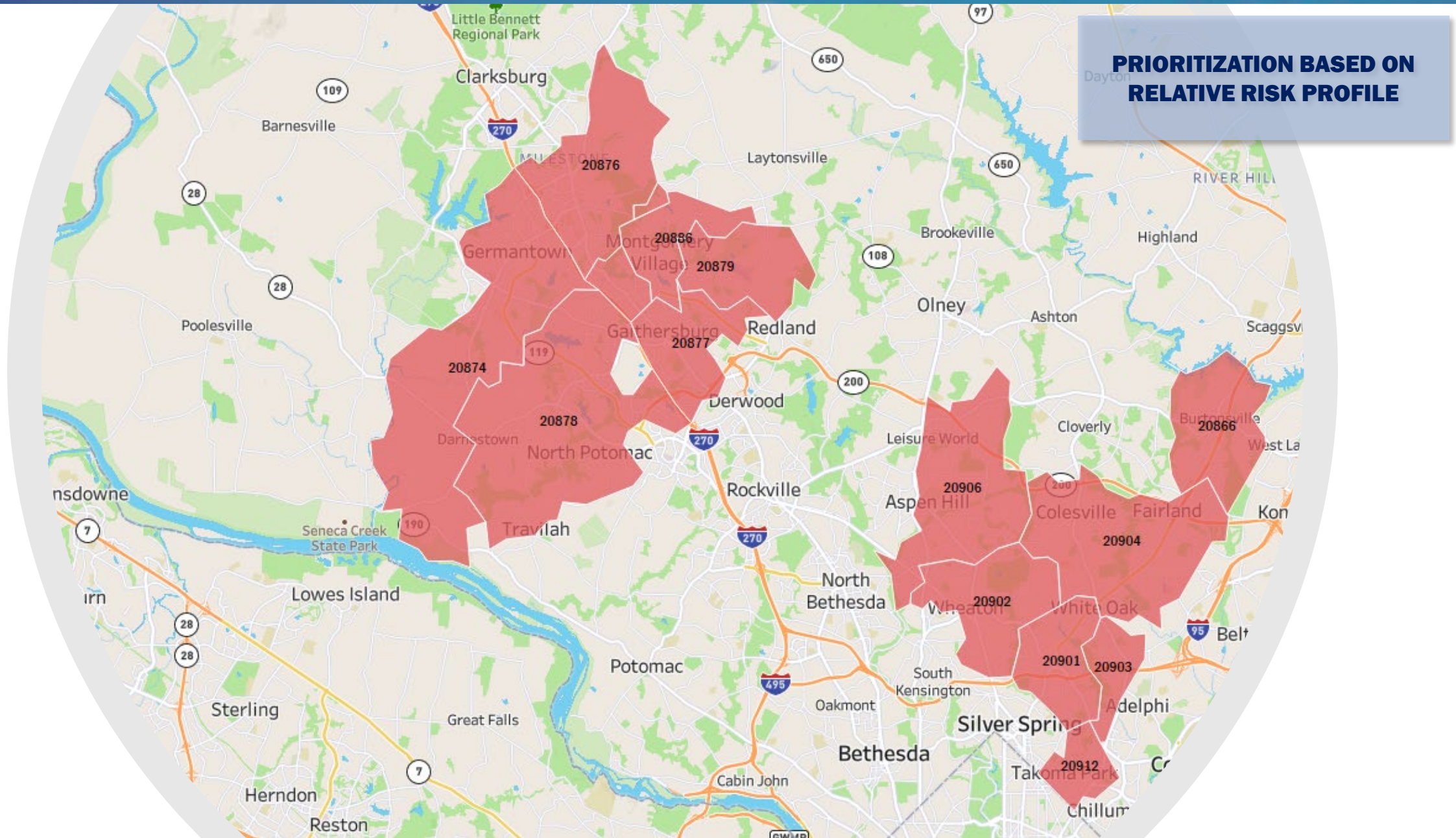


PRE-REGS (65+): GEOGRAPHY—OVER/UNDER-REPRESENTED TRACTS



Note: this map compares a Tract's share of the County's 65+ population vs. its share of 65+ pre-registrations. Tracts in green are over-represented, while those in red are under-represented.

APPENDIX: EQUITY FRAMEWORK—PRIORITY TIER-1 ZIP CODES



APPENDIX: CURRENT PRIORITY GROUPS



MONTGOMERY COUNTY COVID-19 VACCINE PRIORITY GROUPS



1A Still Vaccinating:



PHASE 1

1B

1C

Adults 65-74
Years Old

NEW

TIER 1



- Adults 75 years or Older

TIER 2

NEW



- Public Transit Workers
- Education Sector
- Child Care Workers
- Postal Service Workers

- Food & Agricultural Workers
- Grocery Store Workers
- Individuals with Developmental Disabilities
- Individuals Experiencing Homelessness
- Individuals in Detainee Centers

TIER 3

NEW



- Manufacturing Workers

APPENDIX: CONTEXT—COUNTY DEMOGRAPHICS BY AGE GROUP

