



# UNITED IN SERVICE & SUPPORT

COMMUNITY WEBINAR

COMMUNITY FOOD RESOURCES  
FOR OUR RESIDENTS

THURSDAY, JUNE 26, 2025  
7:00 P.M.

CONDUCTED ON  zoom





# **Food Security in Our Community**

**Heather Bois Bruskin, Director  
Office of Food Systems Resilience Montgomery County**

***United in Service and Support Webinar***

**June 26, 2025**

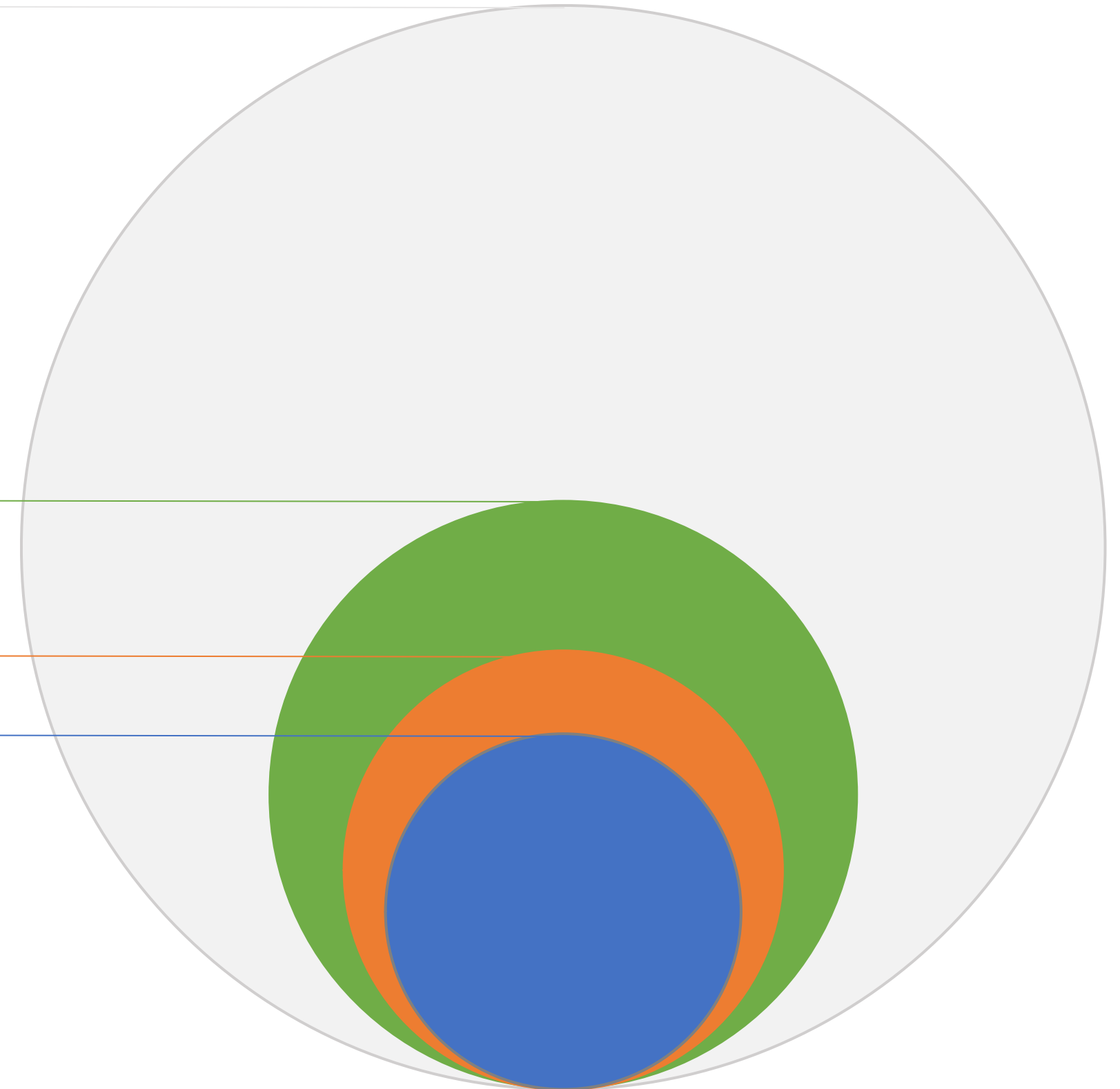
# Residents at Risk of Food Insecurity

1.05 million people in Montgomery County

323k people live below the **Self Sufficiency Standard**

169k people (**1 in 6** indiv.) live in households with incomes below 185% of the FPL (**FARMs Threshold**)

116k people (**1 in 10** indiv.) live in households with incomes below 130% the FPL (**SNAP Threshold**)



## BUILDING A MORE RESILIENT LOCAL FOOD ASSISTANCE NETWORK



### **Diversify Food Supply**

Procuring food through a wide range of suppliers and strategies ensures greater stability during supply chain disruptions. Advance purchasing and collective buying also buffers food supplies from impacts.

### **Center Food Sovereignty**

Dignity and choice are critical to ensure that residents are the decisionmakers in what food they eat, and where, when, and how they access it.



### **Leverage Public & Private Funds**

Collaboration with philanthropic, private sector, and municipal, state and federal government partners can unlock financial resources to match County funds.

### **Leverage Existing Resources**

The impact of strategic investments is amplified by access to shared resources such as technology, staffing and volunteer expertise, in-kind resources and Infrastructure.



# Supporting Our Community

- **Community Food Security:** \$3.5M to 49 organizations
- **School Based Food Assistance:** 60+ MCPS partner schools
- **Food as Medicine:** 6 healthcare partnerships funded \$750k
- **Nutrition Benefit Navigators:** \$300k to 6 outreach grantees
- **MC Groceries:** Supporting 550 families with up to \$400/month



Upcounty HUB



Capitol Kosher Pantry Choice Market



Chirandu Farm

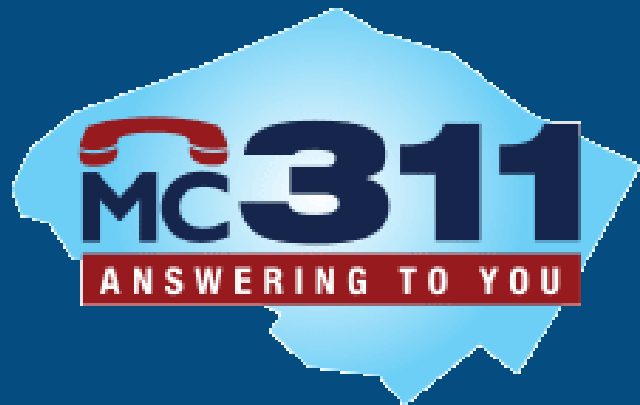


MCPS DFNS Tour



# Connecting with Assistance

Call 311

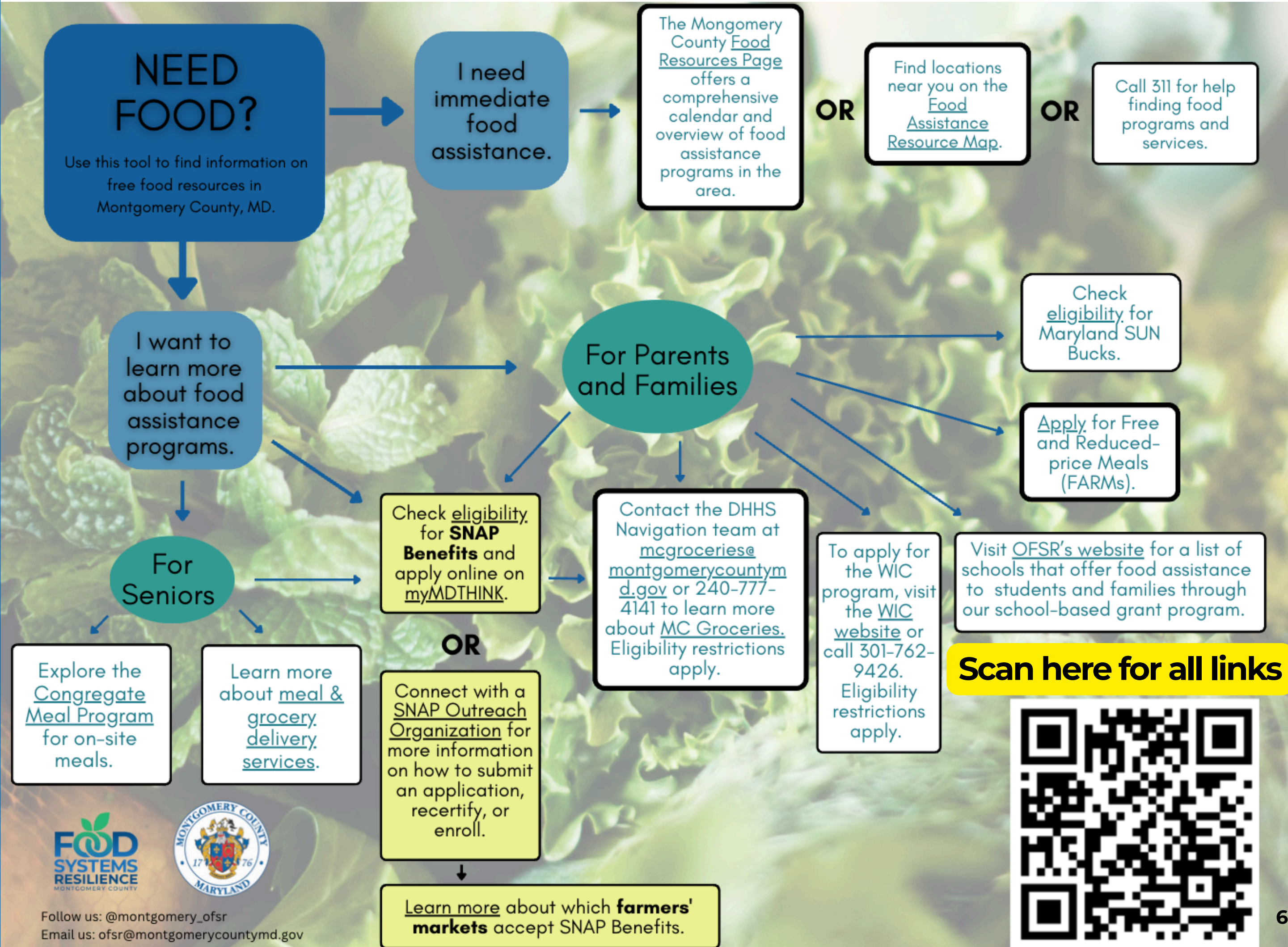


Visit our website

SCAN ME



Follow us: @montgomery\_ofsr  
Email us: ofsr@montgomerycountymd.gov





# Connecting with Assistance

## Silver Spring Christian Reformed Church

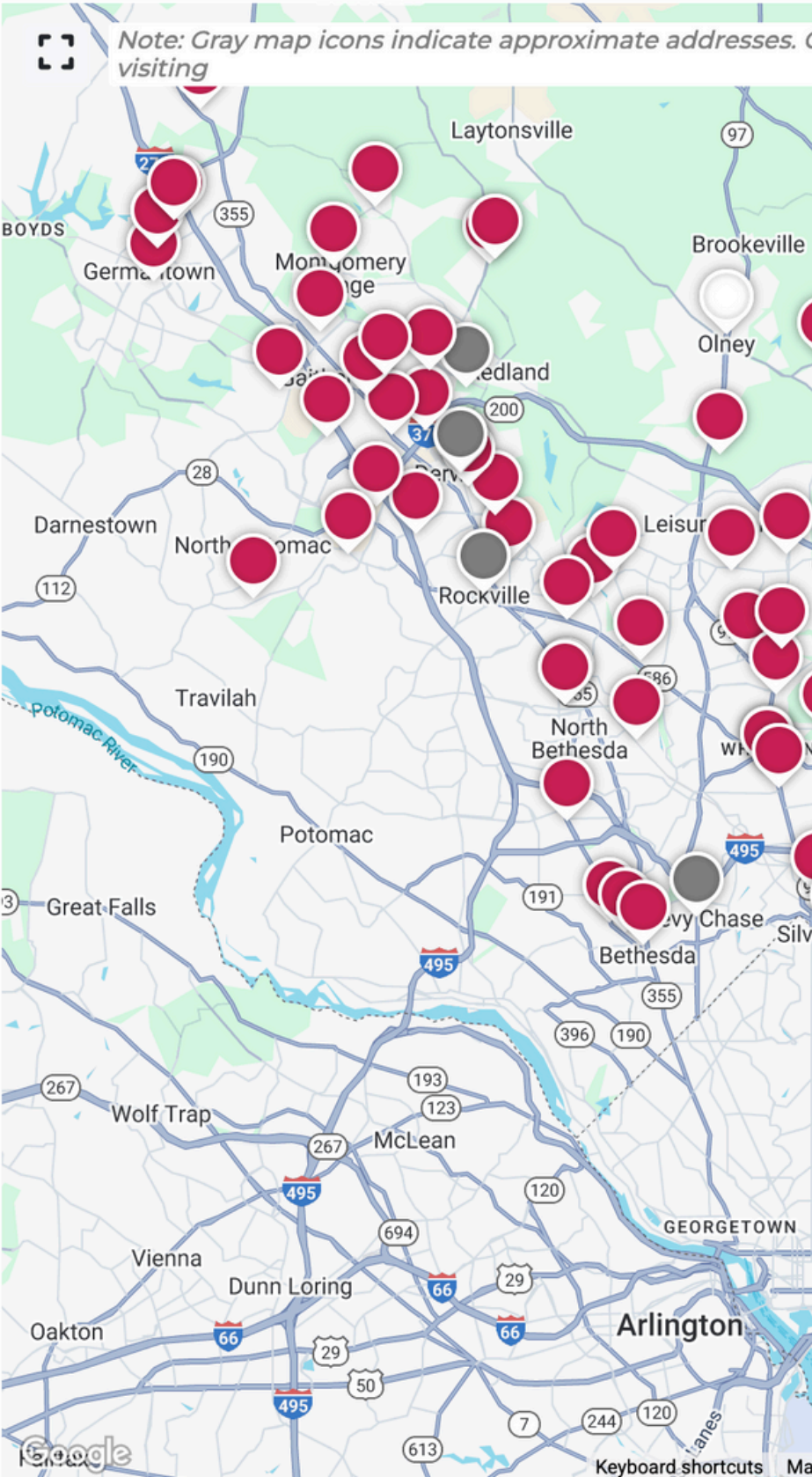
📍 1501 Arcola Avenue, Silver Spring, 20902  
📞 3012848401  
🌐 <http://sscrc.org>  
✉ [foodpantry@sscrc.org](mailto:foodpantry@sscrc.org)  
**Type:** Pre-Packed Pantry Items  
**Accessibility:** Walk-in  
**Languages:** Spanish  
**Features:** Fresh Produce  
🕒 2nd Tuesday of each month, 3PM-5PM

## Jewish Social Service Agency

📍 6123 Montrose Road, Rockville, 20852  
📞 3018162639  
🌐 <http://jssa.org>  
**Type:** Prepared Meals  
**Accessibility:** Service to a Specific Population  
**Languages:** Russian, Spanish  
**Features:** Delivery, Other Services Offered  
🕒 Mon-Fri 9AM-12PM  
📦 Meals on Wheels Location  
Additional language: Hebrew

## AfriThrive Inc.

📍 3132 Bel Pre Road, Silver Spring, 20906



## Food Distribution Events

Month Table Day  
◀ ▶

June 2025

Date/Time	Event
June 24, 8:30 a.m. – 3:30 p.m.	<a href="#">So What Else Food Appointments</a>
June 24, 9 – 11 a.m.	<a href="#">Hughes UMC Mid County Hub - Food Distribution</a>
June 24, 10 a.m. – 12 p.m.	<a href="#">Hope Center (Gaithersburg Hub) Choice Pantry.</a>
June 24, 11:30 a.m. – 1:30 p.m.	<a href="#">So What Else Drive-Thru Food Distribution</a>
June 24, 2 – 3 p.m.	<a href="#">The Upcounty Hub Food Distribution</a>

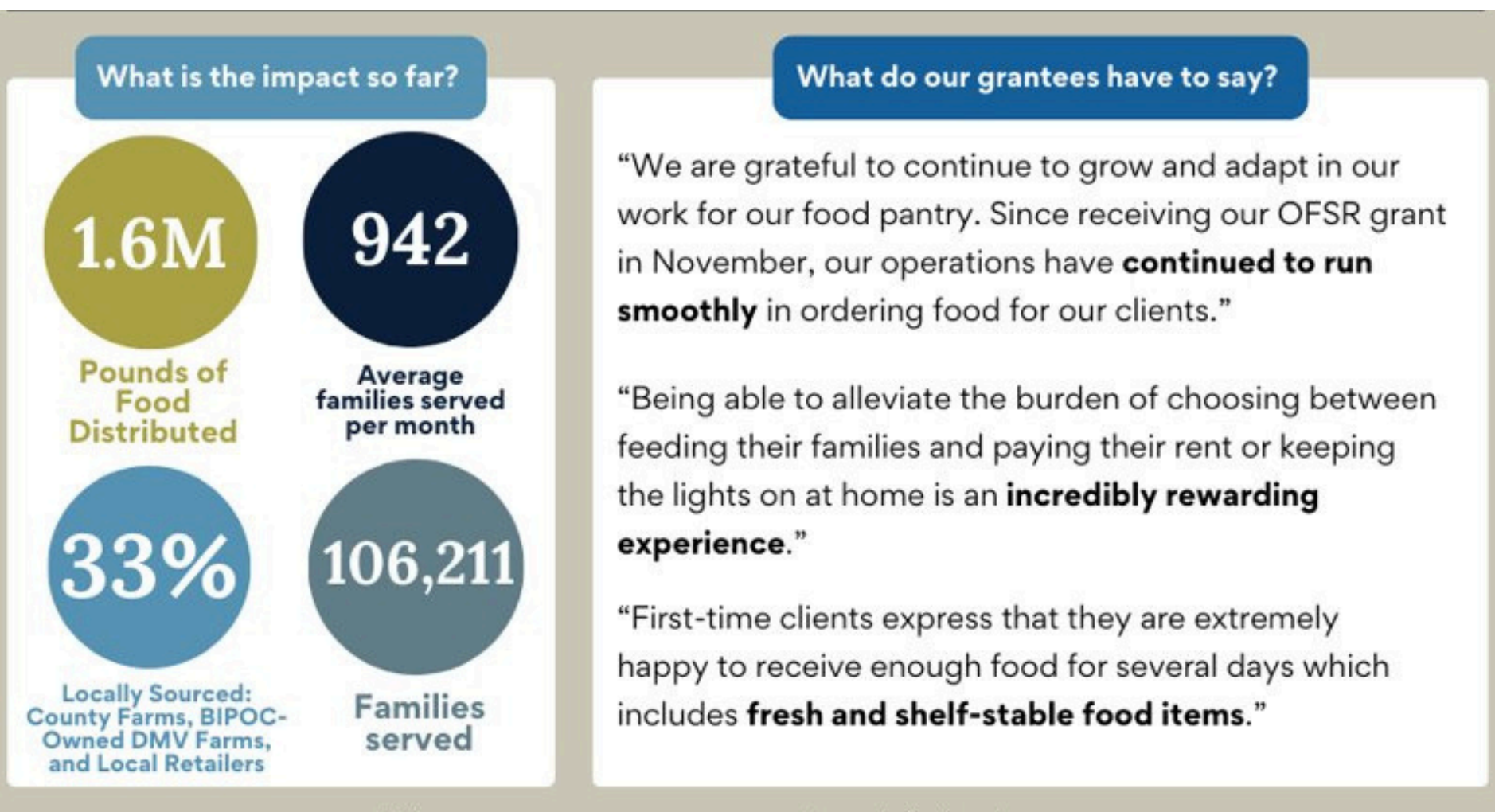
Scan Here for  
ALL Food  
Distribution  
Events in the  
County--  
dates &  
addresses



SCAN ME

# Program Data Collection

The OFSR does not **collect, store, or have access to** any potentially identifying, individual-level information from residents accessing services through any of our grant-funded food assistance programs.



Community organizations funded by the OFSR are **not required** to collect personal details from participants (such as names, birthdates, immigration status, or street address) to provide such services.

Information such as household size, number of children or seniors, and home zip code may be collected to meet reporting requirements.

**However**, participants can be offered the option to **opt-out** of providing this information, and all data will be aggregated for organizational reports.









**Craig Rice, Chief Executive Officer**



# Community Food Resources

## The Why

128,000 people are food insecure  
\$108M food budget shortfall

## The How

Collaboration through OFSR and MCFC  
Government support  
Philanthropic investments





# Services Food Banks Provide

- Food Distribution Boxes
- Choice Markets
- School Based Programs
- SNAP Outreach and Advocacy







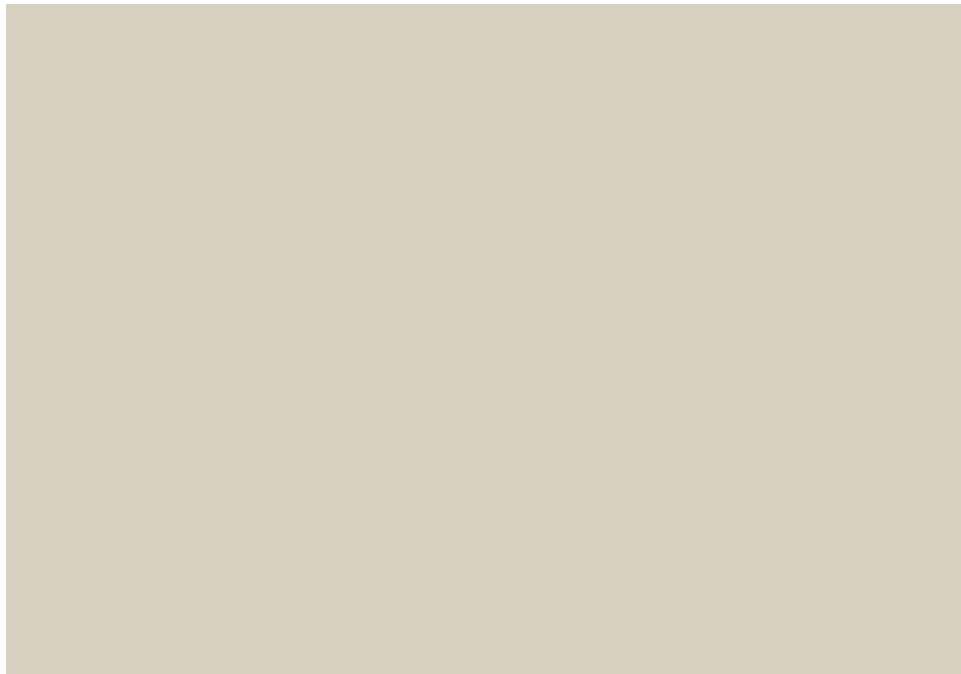
## Other ways we help with Food Insecurity.

### Community Food Rescue

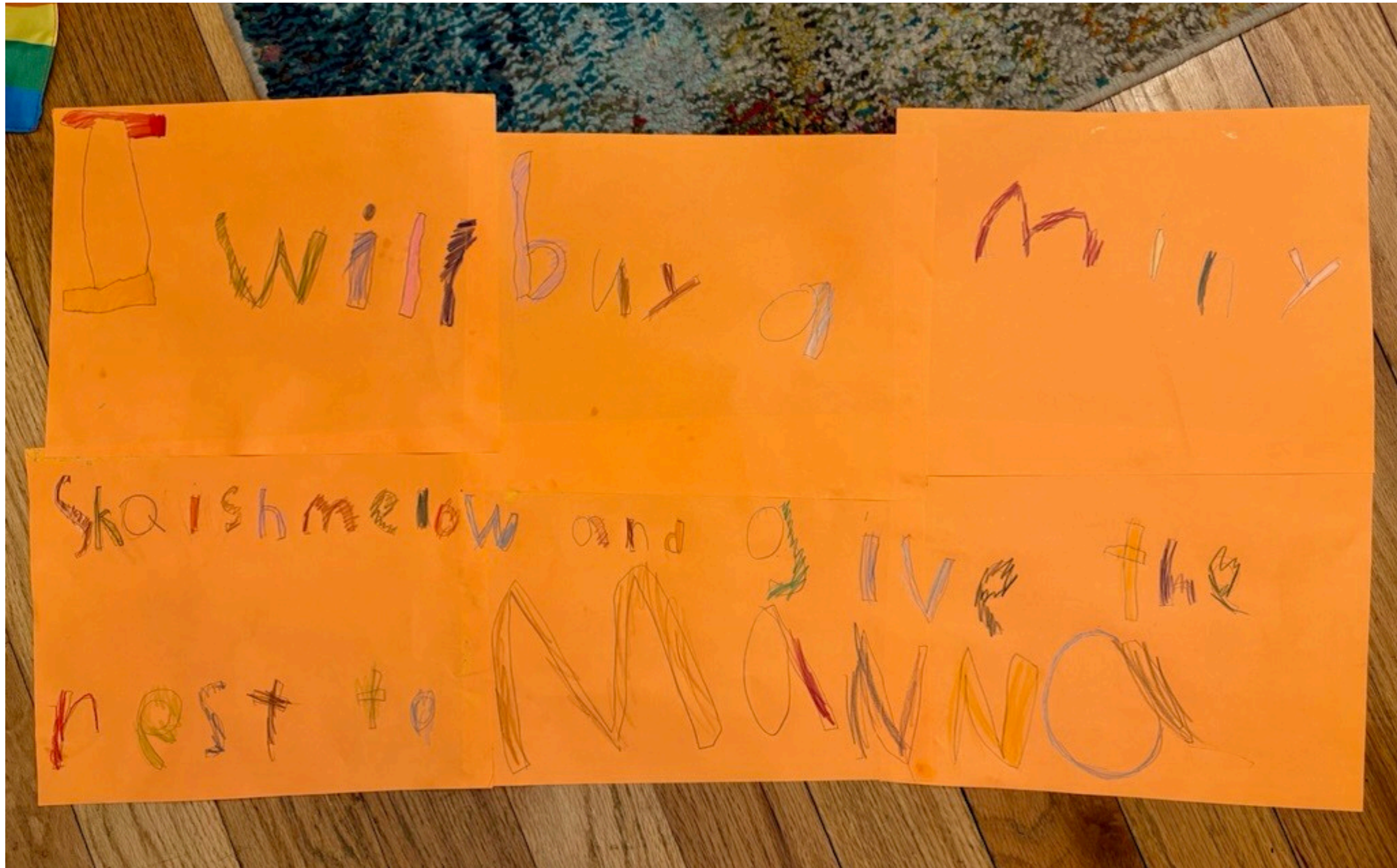
- Grocery partners

### Farm to Food Bank

- Supporting Farmers...  
Supporting the Community











# **Food Resources for our Residents**

## **Montgomery County Public Schools**

**Thursday, June 26, 2025**



# Food & Nutrition Services

Serve over 18 million meals annually  
4th largest “restaurant” in Montgomery County





# Summer Meals



- **Free breakfast and lunch** available at over 120+ sites
- School and community based sites
- Open site **details here**

SCAN





# During the School Year

- Breakfast  
Lunch
- Afterschool
- Snack and  
Supper





# Access to Free Meals (School Year)

- Free breakfast for all in **117 schools**  
***Maryland Meals for Achievement In-Classroom Breakfast Program***
- Free breakfast and lunch for all in **60 schools**  
***Community Eligibility Provision (CEP)***
- Direct Certification for free meals  
***SNAP, TANF, Medicaid, Foster, Migrant, Homeless, Runaway***
- Free And Reduced-price Meal (FARM) applications –  
Households **must apply annually** starting in July



# Quality and Nutrition



- Student tested and approved
- Meets and exceeds all federal and state nutrition standards  
***Whole grain, low sodium***
- Meets additional MCPS standards  
***No artificial colors/dyes, Aspartame, MSG, etc.***





---

# Montgomery County Community Action Agency, Department of Health and Human Services

Monica M. Goldberg, Program Manager,  
Navigation Unit





# Community Action Agency



## Our Mission:

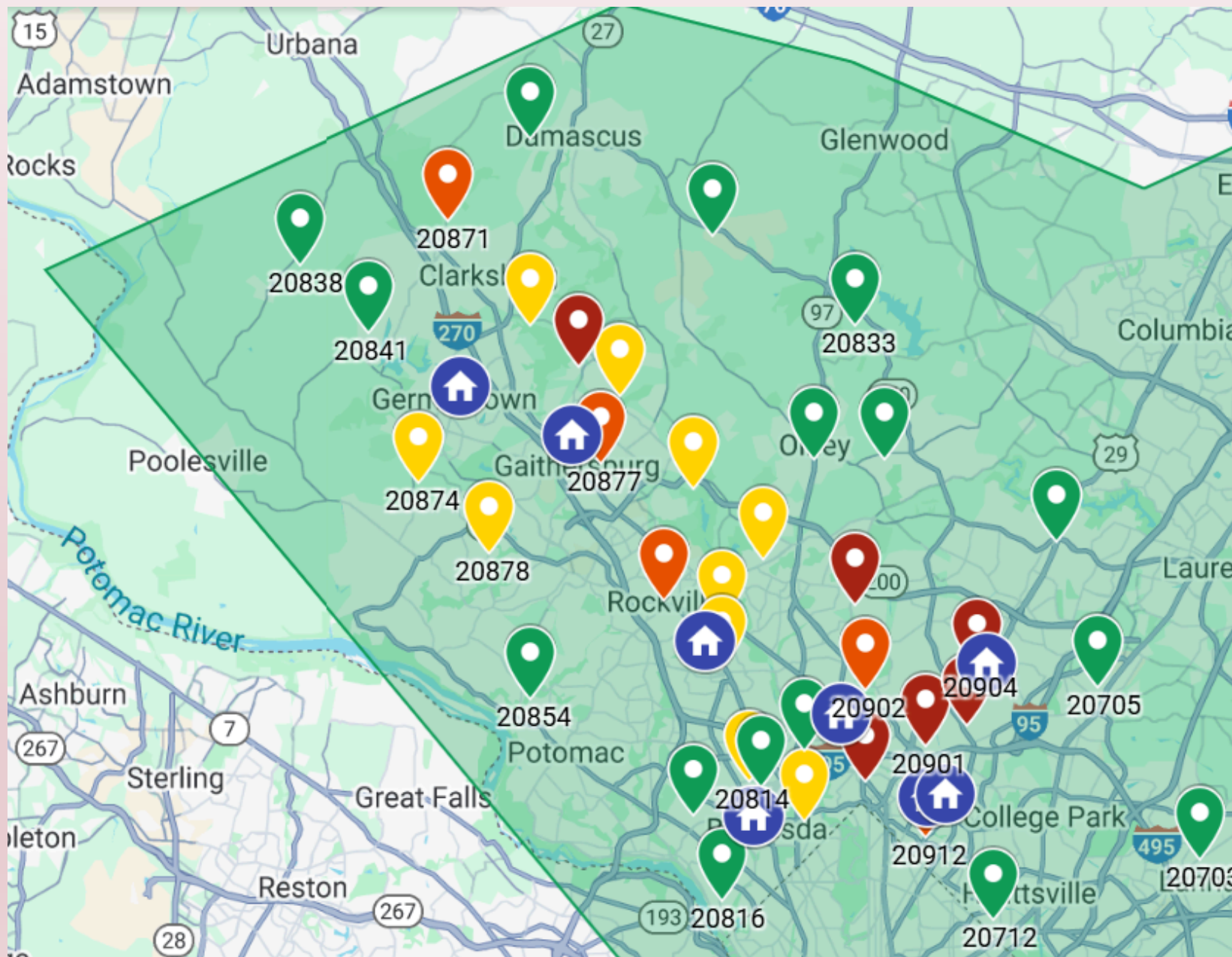
The mission of the Montgomery County Community Action Agency is to advance social and economic mobility among communities and neighbors through services, partnerships, and advocacy using an equity lens.

## Our Programs

- VITA
- Head Start
- Community Advocacy Institute
- Contract Partners
- TESS Community Action Center
- Navigation Unit



# Navigation Unit



The Montgomery County Community Action Team works to reduce poverty and empower low-income residents by connecting families to essential services, advocating for equity, and supporting long-term stability. Through collaboration, outreach, and compassionate service, the team helps build stronger, more resilient communities.

## Services Provided:

- Hands on Application Assistance
- Community Provider Trainings
- DHHS Navigation Assistance
- Information and Referrals



---

# *Navigation Unit*

Contact Us By Phone: 240-777-4141  
Or Email:  
[Riverm01@montgomerycountymd.gov](mailto:Riverm01@montgomerycountymd.gov)

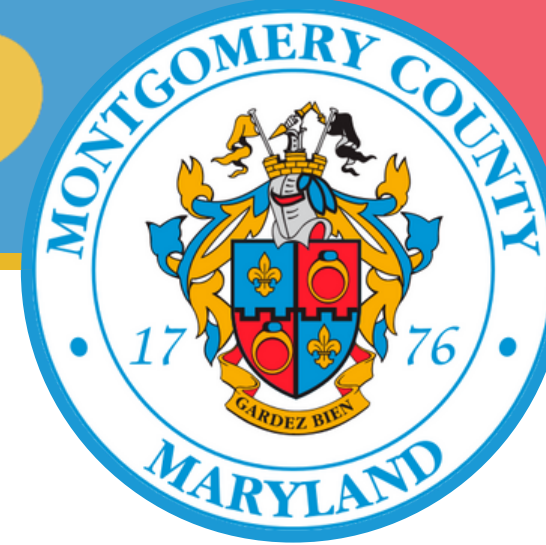
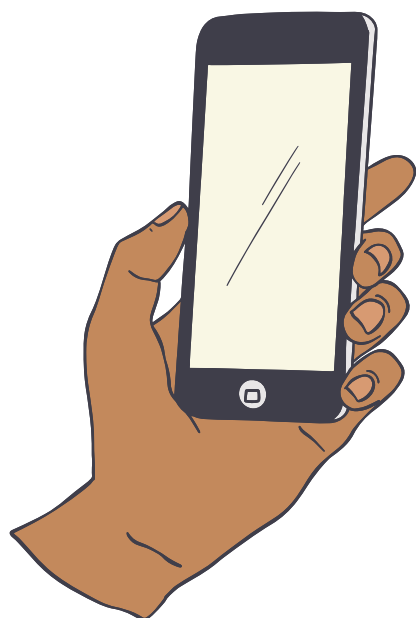






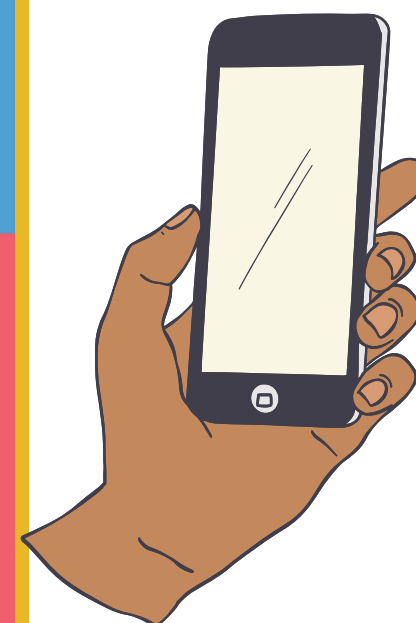
**For information about  
resources available in  
Montgomery County, visit the  
following resource page:**

**<https://bit.ly/MocoResources>**



**Para información sobre  
recursos disponibles en el  
Condado de Montgomery,  
visite la siguiente página web:**


**<https://bit.ly/MocoResources>**





Apply Today: GovernmentJobs.com

- Quick Link: [MCG Jobs Board](#)
- Search current job openings
  - Updated daily
- Sign up for [Job Alerts](#)
- [Application Guide](#)
  - Create an account
  - Applying for a job
  - Checking application status
- Follow us on [LinkedIn](#)
- Follow us on [Twitter](#)



MONTGOMERY

A Great Place To

Montgomery County Government Careers

Welcome to the Montgomery County Government (MD) jobs board. We invite you to view and apply for our available jobs. Be sure to check out the resources on the menu (top left of this page) and explore our wide variety of exciting career paths, outstanding employee benefits, and helpful job seeker resources. **Success tip:** Become one of the first to be notified when we post a job in your field. Take time today to set up your job alerts: [Job Alerts Signup](#)

Search

Q

92 Jobs found

Sort

Filter

Job Title	Job Type	Salary	Closing	Posted	Department	Location	Job Number
<a href="#">African Community Liaison (Community Outreach Manager), Grade N28</a>	Term	\$92,075.00 - \$130,886.00 Annually	04/04/25	03/21/25	Community Engagement Cluster	1401 Rockville Pike Rockville MD 20852 USA	2025-00176
<a href="#">Animal Services Officer, Lead (Grade 21)</a>	Permanent	\$65,551.00 - \$93,756.00 Annually	Continuous	10/10/24	Office of Animal Services	7315 Muncaster Mill Rd Derwood MD 20855 USA	2024 - 00278
<a href="#">Assets Manager (Program Manager II) - Grade 25</a>	Permanent	\$81,122.00 - \$130,181.00 Annually		09/11/24	Department of Housing and Community Affairs	1401 Rockville Pike Rockville MD 20852 USA	2024 - 00174



Office of *Human Resources*



# WORKSOURCE MONTGOMERY



WorkSource Montgomery (WSM) is the county's fiscal agent responsible for local administration of the Workforce Innovation & Opportunity Act (WIOA) and coordination of the local workforce development system in Montgomery County.

To put it simply, WSM connects jobseekers to employers and employers to jobseekers.



## Support for Federal Workers Resource Hub

This page provides resources to help federal workers and contractors find new opportunities, refine their job search, and advance their careers with confidence.

<https://worksourcemontgomery.com>

**Germantown : (240) 406-5485**

**Wheaton : (301) 929-6880**

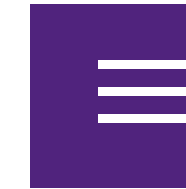
SCAN ME





# MONTGOMERY COLLEGE WEB PORTAL

MC INFO



HOME / RESOURCES / FEDERAL GUIDANCE RESOURCES / DISPLACED FEDERAL WORKERS SUPPORT

## Displaced Federal Workers Support



Losing a job is stressful—but you don't have to navigate it alone. Montgomery College (MC) offers fast, affordable training, career support, and direct connections to local employers to help you transition into a high-demand career quickly and confidently.

## Free Career Services to Help You Land Your Next Job

<https://bit.ly/MCinformation> 



# MOBILIZE MONTGOMERY



An Initiative Supporting the Federal Workforce in Montgomery County, Maryland

A coalition to support employers and employees affected by the federal government budget cuts.

Our goal is to centralize resources, information, and events taking place within the county and to offer an opportunity for the community to inform how we can best support them.



Mobilize Montgomery | [Mobilize-Montgomery.com](https://Mobilize-Montgomery.com)



# MOBILIZE MONTGOMERY



## Available Resources

#MobilizeMontgomeryMD

### For Job Seekers:

- Career Opportunities & Job Listings
- Career Development, Training & Resume Building Tools
- Employee Rights, Protections & Financial Assistance
- Starting a Business & Entrepreneurship
- Health, Support & Advocacy

### For Employers:

- Funding & Incentives
- Upskilling & Training
- Procurement Opportunities
- Data, Business Strategy & Continuity
- Start-ups

Mobilize Montgomery | [Mobilize-Montgomery.com](https://Mobilize-Montgomery.com)





## United in Service & Support

Next ZOOM webinar:

**Wednesday July 9, 2025, 7:00 p.m.**

**Non-profit Services, Unemployment  
Benefits & Constituent Services**

**<https://bit.ly/United-In-Service>**

Scan me







# THANK YOU!

## United in Service and Support

ONLINE INFORMATIONAL SERIES