



## COMMUNITY WEBINAR

**PURSUE NEW OPPORTUNITIES:**

ADVANCEMENT THROUGH WORKFORCE TRAINING & CERTIFICATION PROGRAMS

**WEDNESDAY, JULY 23, 2025**  
**7:00 P.M.**

CONDUCTED ON  zoom





# United in Service and Support Webinar

Pursue New Opportunities: Advancement through Workforce Training and Certification Programs

Dr. Sarah Campbell  
Vice President for Liberal Arts & Education

Dr. Nawal Benmouna  
Vice President for STEM & Health Sciences

July 23rd, 2025

# Agenda

- Alternative Certification for Effective Teachers: From Feds to Eds
- Biotechnology Program
- Cybersecurity



# Montgomery College School of Education Alternative Certification for Effective Teachers (ACET)





# ACET: From Feds to Eds



## Contact Us

### ACET Program Assistant

✉ acet  
@montgomerycollege.edu

☎ 240-567-4061

📍 Rockville Campus, SV 406H



# Montgomery College Biotechnology

MC BIOTECH



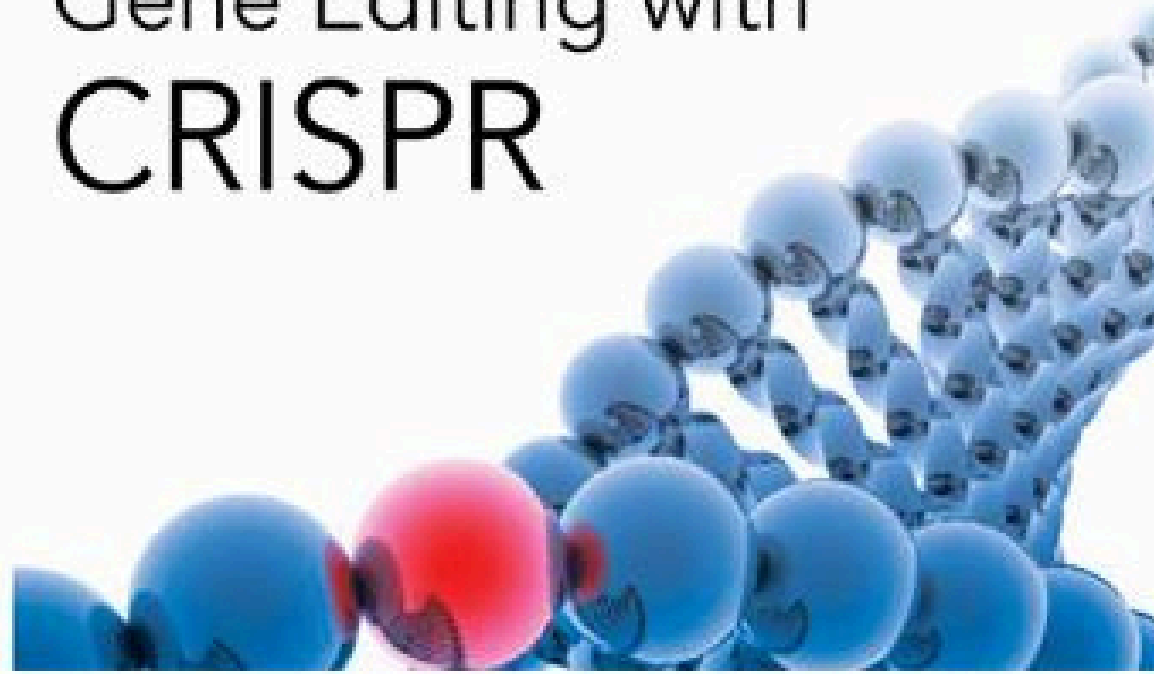


# Biotechnology Workforce Development Programs



**BIOTrain Program  
Workshops**

Gene Editing with  
**CRISPR**

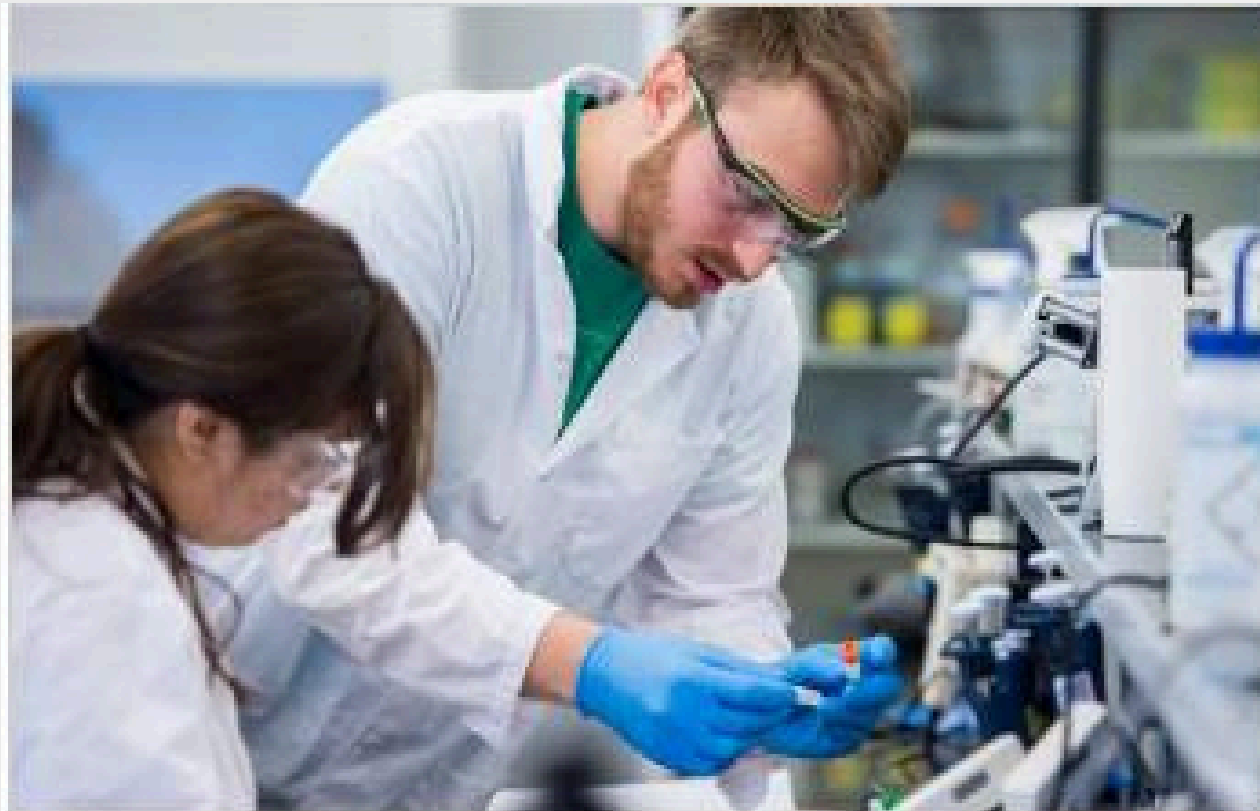


**BIO-TRAC® Workshops**



**Biotechnology Boot  
Camp**

# Biotechnology Degree and Certificate Programs



**Biotechnology Degree  
Program**



**Biotechnology  
Certificate Program**



# Networking & Job Fair

for Recently Displaced Federal  
Research and Associate Scientists

**MC BIOTECH**  
Education & Training

June 26th • 9:00am-2:00pm  
Bioscience Education Center (BEC)  
Montgomery College, Germantown Campus

# Networking & Job Fair

for Recently Displaced Federal  
Research and Associate Scientists

**MC BIOTECH**  
Education & Training

March 31st • 9:00am-1:30pm  
Bioscience Education Center (BEC)  
Montgomery College, Germantown Campus



# Montgomery College Cybersecurity





# The Cyber Workforce Accelerator: Workforce Development Program

Considering a career in cybersecurity? Build your skills at no cost!

## Program Overview

The CWA Workforce Development Program is designed to fast-track your entry into the cybersecurity field.

- Program Length: 48 hours accelerated training (plus exam)
- **Program Cost: \$0. No cost to participants (grant funded)**
- Schedule: Rolling enrollment, year-round
- Format: 100% online training
- Certifications Earned: SOC Operations Analyst Certification

**APPLY NOW**



# Cybersecurity Degree and Certificate Programs

## Associate of Applied Science

- **Cybersecurity AAS Degree**

## Certificates

- **Cybersecurity for IT Professionals Certificate**





# More Opportunities!

## MONTGOMERY COLLEGE COMPUTER TECHNOLOGY / ITI

Course Schedule | Summer 2025



Career-focused, hands-on IT courses taught by industry professionals.



## MONTHLY CAREER WORKSHOPS

Presented by  
Career Catchers, Inc.



# The Universities

AT SHADY GROVE



# UNIVERSITY SYSTEM OF MARYLAND PARTNERS





# USG CAMPUS



- Located in Rockville
- Founded in 2000
- Largest of USM's Regional Learning Centers



**Regional Community Colleges**  
(e.g. Montgomery College, Frederick,  
Prince Georges, Howard)



**UMBC**

B.A. History  
B.A. Political Science  
B.A. Psychology  
B.A. Social Work  
B.S. Computer Science -  
Cyber Track  
B.S. Computer Science -  
Data Science Track  
B.S. Mechanical Engineering  
*Starting Fall 2022*  
B.S. Translational Life Science  
Technology  
M.P.S. Biotechnology  
M.P.S. Cybersecurity  
M.P.S. Data Science  
M.P.S. Industrial Organizational  
Psychology

**University of Maryland,  
Baltimore**

B.S. Nursing  
B.S./M.S. Clinical Dental  
Hygiene Leader  
Doctor of Nursing Practice (DNP) -  
Family Nurse Practitioner  
M.S. Medical Cannabis Science  
and Therapeutics  
M.S. Pharmaceutical Sciences  
M.S.W. Social Work  
Post-Baccalaureate Certificate in  
Oral Health Science

**University of Maryland,  
College Park**

B.S. Accounting  
B.S. Biocomputational Engineering  
B.S. Biological Sciences  
B.A. Communication  
B.A. Criminology and Criminal Justice  
B.S. Embedded Systems and  
Internet of Things  
B.S. Information Science  
B.S. Management  
B.S. Marketing  
B.S. Public Health Science  
M.B.A. Business Administration  
M.Ed. Human Development  
M.Ed. Math Education: Special Studies in  
Middle School Math  
M.Ed. Special Education – Focus Autism  
M.Ed. Special Education – Focus Early  
Childhood Birth - Age 5  
M.Ed. Teacher Leadership: Special  
Studies in STEM Education

**University of Maryland,  
Eastern Shore**

B.S. Construction  
Management Technology  
B.S. Hospitality & Tourism Management

**Bowie State University**

Ed.D. Educational Leadership  
M.S. Counseling Psychology  
M.Ed. Elementary & Secondary  
School Administration

**Towson University**

B.S. Early Childhood Education  
B.S. Elementary Education/Special  
Education (Dual Certification)  
M.A.T. Special Education  
M.Ed. Early Childhood Education  
M.Ed. Special Education

**University of Maryland,  
Global Campus**

B.S. Accounting  
B.S. Business Administration  
B.A. Communication Studies  
B.S. Computer Networks  
& Cybersecurity  
B.S. Cybersecurity Management  
& Policy  
B.S. Digital Media & Web Technology  
B.S. Human Resource Management  
B.S. Information Systems Management  
B.S. Public Safety Administration  
B.S. Software Development & Security  
B.T.P.S. Biotechnology  
B.T.P.S. Laboratory Management  
M.S. Biotechnology  
M.S. Healthcare Administration  
M.S. Information Technology  
M.S. Management

**University of Baltimore**

B.S. Health Management  
B.S. Simulation & Game Design  
D.P.A. Public Administration  
M.A. Integrated Design  
M.P.A. Public Administration  
M.S. Forensic Science:  
Cyber Investigations  
M.S. Health Administration

**Salisbury University**

B.F.A. Art, Graphic Design Track  
B.S. Exercise Science  
M.S. Health and Human Performance



# University of Maryland

## Robert H. Smith School of Business @ USG



We offer 3 highly demanded majors at our Shady Grove campus: Accounting, Management and Marketing.

Those studying at Shady Grove enjoy small class sizes and easy access to academic advising and career counselors.

The Shady Grove campus is a beautiful corporate setting with state-of-the-art classrooms and computer labs — located close to everything along the I-270 Technology Corridor.





# University of Maryland

## Robert H. Smith School of Business @ USG

The USG program admits students only in the fall semester due to the MBA-cohort style of four semesters, sequential full-time degree program.

All USG courses are taught by the same corps of dedicated Smith faculty. Each major has the same set of required courses and graduation requirements as listed in College Park.

USG students take all of their courses on the Shady Grove campus.

Always remember that USG students earn the exact same degree as those on main campus - a B.S. in Accounting, Management or Marketing from the prestigious Robert H. Smith School of Business, University of Maryland at College Park.





# University of Maryland Robert H. Smith School of Business @ USG

o

We support the Federal Workforce during this turbulent time.

The Smith School is currently offering a 30% discount for the first year of courses in our STEM-designated MS and MBA programs.

Explore the particulars: <https://www.rhsmith.umd.edu/fed-workforce-support>





# University of Maryland Baltimore at Universities at Shady Grove

o

The interdisciplinary field of pharmaceutical sciences combines and applies a broad range of scientific areas like chemistry, biology, mathematics, engineering, medicinal and physical chemistry, biochemistry and biophysics, cellular and molecular biology, pharmacology and neuroscience, nanomedicine, pharmaceuticals, pharmacokinetics and pharmacodynamics and more, to discover and develop new drugs and therapies.

- On-campus learning
- 35 credit minimum requirement
- Campus Options
  - Baltimore or USG
- 16 months to complete
- Approximate cost (Plus applicable fees)
  - \$654 per credit in-state
  - \$805 per credit out-of-state
  - Financial Aid is available to those who qualify
- Application deadline
  - Fall Start > March 1



# University of Maryland Baltimore at Universities at Shady Grove

- Fall 1
  - Principles of Drug Discovery
  - Experimental Success 1
  - Ethics and Biostatistics
  - Bioanalytical Methods
  - PSC Journal Club
- Spring 1
  - Principles of Drug Development
  - Experimental Success 2
  - Spectrometric Methods
  - Process Analytical Technologies for Pharmaceutical Manufacturing
  - PSC Journal Club
  - Plus, Possible Electives
- Summer 1
  - Biopharmaceutical Research Internship
  - Research Project Design and Management
- Fall 2
  - Biopharmaceutical Research Internship
  - Biopharmaceutical Capstone
  - MS Departmental Seminar
  - Plus, Possible Electives



- 6-month Hands on Co-Op experience with
  - partners.
  - Two Types - Partner Affiliated and Independent
- Three Categories
- Industry, Government, Academia



# United in Service Webinar

Pursuing New Opportunities: Advancement through  
Workforce Training & Certification Programs

July 23, 2025



# Resource Links



An Initiative Supporting the Federal Workforce  
in Montgomery County, Maryland

<https://mobilize-montgomery.com>



<https://labor.maryland.gov/federalworkers/>



[https://worksourcemontgomery.com/  
home/job-seekers/sfwresourcehub/](https://worksourcemontgomery.com/home/job-seekers/sfwresourcehub/)



<https://thinkmoco.com>





# Available Services & Resources

## Unemployment Benefits

Support available at the Wheaton American Job Center to assist with UI claims and benefits

## Federal Workforce Career Center

Job search, career counseling, & training workshops for professionals seeking new opportunities

## American Job Center

Visit the Wheaton American Job Center for in-person support

## Maryland Workforce Exchange

Online job platform featuring thousands of local and statewide jobs, labor market information, and training resources

01

02

03

04

05

06

07

08

## SkillUp Montgomery

Free online professional development and occupational skills courses.

## Workshops & Job Fairs

Participate in instructor led professional development workshops along with job fairs and networking events

## Virtual Career Coach

Assess your interests and explore relevant career pathways and opportunities

## Google Career Dreamer

Utilize the power of Artificial Intelligence to identify local opportunities related to you current or former role

# Calendar of Events

- Participate in free virtual/in-person instructor led professional development workshops on a variety of topics.
- Access to virtual/in-person employer & partner hiring events as well as WSM's quarterly job fairs.
- Free professional headshots offered at "Mastering LinkedIn/Networking" workshop.

<div> <div>CWM Network</div> <div>East County</div> <div>East County H.M.B. Center</div> <div>Demersville</div> <div>Job Fair</div> <div>Mobile Job Center</div> <div>Virtual</div> <div>Workshop</div> </div>						
SUNDAY	MONDAY	TUESDAY	WEDNESDAY	THURSDAY	FRIDAY	SATURDAY
1 Mobile Unit Unavailable	2 Resume Essentials Getting Started with WorkSource Montgomery	3 How to Write a Cover Letter Job Search Strategies	4 Preparing for a Job Interview Briggs Chaney Market Place Emotional Intelligence & Your Job Search	5 Getting Started with WorkSource Montgomery Mindfulness Meditation Stevenson Homes	6 HRM Resume Advisor MCPS - Woodrow Hall Elementary School	7 HOC - Fatherhood Initiative Festival Event
8 Mobile Unit Unavailable	9 Resume Essentials Getting Started with WorkSource Montgomery Manage Your Time	10 Beat the Bots Premium Care USA Career Fair Credit Scores and Reporting (M&T Bank)	11 Acing Virtual Interviews & Hiring Events Briggs Chaney Market Place The Skills You Didn't Know You Had	12 Getting Started with WorkSource Montgomery Federal to Private Business Strategies for a Successful Transition HOC	13 Mock Interviews New Life SDA Church Community Job Fair & College Day Expo	14 Montgomery County Public Libraries - Potomac Library
15 Mobile Unit Unavailable	16 Resume Essentials Getting Started with WorkSource Montgomery	17 Help I was Ghosted by an Employer Remote Networking Success Strategies	18 Mastering LinkedIn/Headshots (in Person) Briggs Chaney Market Place	19 WSM CLOSED FOR THE HOLIDAY MOCH	20 HRM Resume Advisor HOC	21 BlackRock Center for the Arts
22 Mobile Unit Unavailable	23 Art of Salary Negotiation	24 Inner Balance: Your Mental Health Check-In	25 Briggs Chaney Market Place	26 Getting Started with WorkSource Montgomery	27 Mock Interviews	28

visit this online at

[www.worksourcemontgomery.com/events-calendar](http://www.worksourcemontgomery.com/events-calendar)





# Questions?



**FACEBOOK**

/WorkSourceMontgomery



**TWITTER**

@WorkSourceMD



**INSTAGRAM**

@WorkSourceMD



**LINKEDIN**

WorkSource Montgomery

**WEBSITE**

[www.worksourcemontgomery.com](http://www.worksourcemontgomery.com)



**LINKTREE**

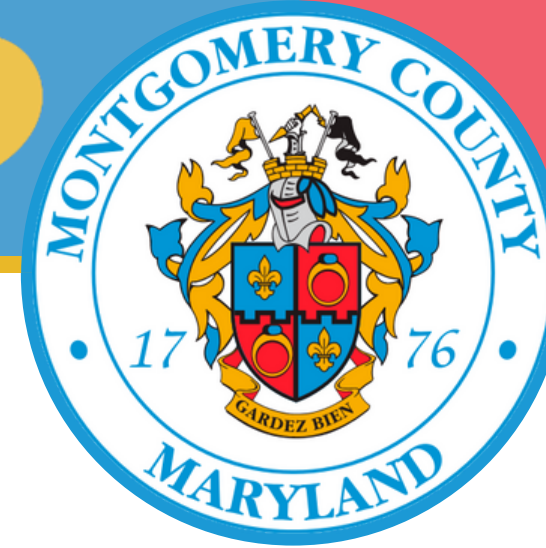
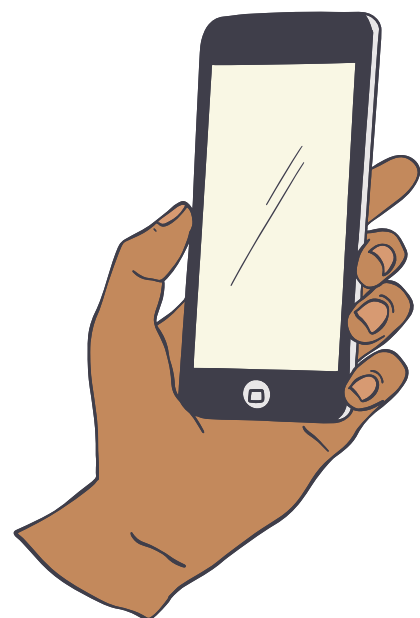
Scan the QR code for more information about us!





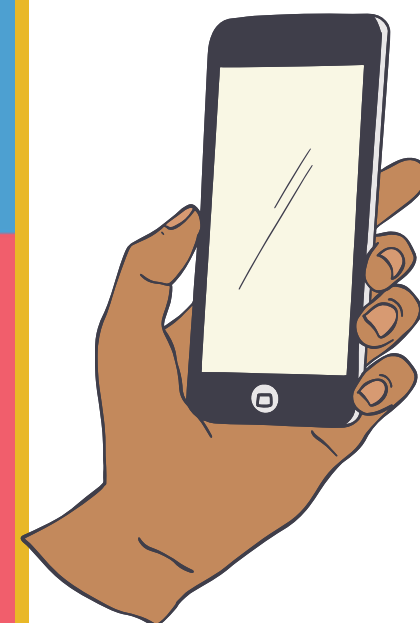
**For information about  
resources available in  
Montgomery County, visit the  
following resource page:**

**<https://bit.ly/MocoResources>**



**Para información sobre  
recursos disponibles en el  
Condado de Montgomery,  
visite la siguiente página web:**


**<https://bit.ly/MocoResources>**





Apply Today: GovernmentJobs.com

- Quick Link: [MCG Jobs Board](#)
- Search current job openings
  - Updated daily
- Sign up for [Job Alerts](#)
- [Application Guide](#)
  - Create an account
  - Applying for a job
  - Checking application status
- Follow us on [LinkedIn](#)
- Follow us on [Twitter](#)



Montgomery County Government Careers

WELCOME TO THE MONTGOMERY COUNTY GOVERNMENT (MD) JOBS BOARD. WE INVITE YOU TO VIEW AND APPLY FOR OUR AVAILABLE JOBS. BE SURE TO CHECK OUT THE RESOURCES ON THE MENU (TOP LEFT OF THIS PAGE) AND EXPLORE OUR WIDE VARIETY OF EXCITING CAREER PATHS, OUTSTANDING EMPLOYEE BENEFITS, AND HELPFUL JOB SEEKER RESOURCES. **SUCCESS TIP:** BECOME ONE OF THE FIRST TO BE NOTIFIED WHEN WE POST A JOB IN YOUR FIELD. TAKE TIME TODAY TO SET UP YOUR JOB ALERTS: [JOB ALERTS SIGNUP](#)

Search

92 Jobs found

Sort

Filter

Job Title	Job Type	Salary	Closing	Posted	Department	Location	Job Number
<a href="#">African Community Liaison (Community Outreach Manager), Grade N28</a>	Term	\$92,075.00 - \$130,886.00 Annually	04/04/25	03/21/25	Community Engagement Cluster	1401 Rockville Pike Rockville MD 20852 USA	2025-00176
<a href="#">Animal Services Officer, Lead (Grade 21)</a>	Permanent	\$65,551.00 - \$93,756.00 Annually	Continuous	10/10/24	Office of Animal Services	7315 Muncaster Mill Rd Derwood MD 20855 USA	2024 - 00278
<a href="#">Assets Manager (Program Manager II) - Grade 25</a>	Permanent	\$81,122.00 - \$130,181.00 Annually		09/11/24	Department of Housing and Community Affairs	1401 Rockville Pike Rockville MD 20852 USA	2024 - 00174



Office of *Human Resources*

# WORKSOURCE MONTGOMERY



WorkSource Montgomery (WSM) is the county's fiscal agent responsible for local administration of the Workforce Innovation & Opportunity Act (WIOA) and coordination of the local workforce development system in Montgomery County.

To put it simply, WSM connects jobseekers to employers and employers to jobseekers.



## Support for Federal Workers Resource Hub

This page provides resources to help federal workers and contractors find new opportunities, refine their job search, and advance their careers with confidence.

<https://worksourcemontgomery.com>

**Germantown : (240) 406-5485**

**Wheaton : (301) 929-6880**

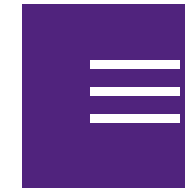
SCAN ME





# MONTGOMERY COLLEGE WEB PORTAL

MC INFO



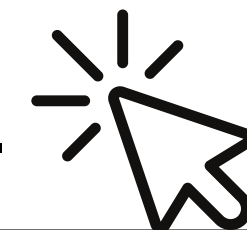
HOME / RESOURCES / FEDERAL GUIDANCE RESOURCES / DISPLACED FEDERAL WORKERS SUPPORT

## Displaced Federal Workers Support

Losing a job is stressful—but you don't have to navigate it alone. Montgomery College (MC) offers fast, affordable training, career support, and direct connections to local employers to help you transition into a high-demand career quickly and confidently.

## Free Career Services to Help You Land Your Next Job

<https://bit.ly/MCinformation>



# MOBILIZE MONTGOMERY



An Initiative Supporting the Federal Workforce in Montgomery County, Maryland

A coalition to support employers and employees affected by the federal government budget cuts.

Our goal is to centralize resources, information, and events taking place within the county and to offer an opportunity for the community to inform how we can best support them.



Mobilize Montgomery | [Mobilize-Montgomery.com](https://Mobilize-Montgomery.com)



# MOBILIZE MONTGOMERY



## Available Resources

#MobilizeMontgomeryMD

### For Job Seekers:

- Career Opportunities & Job Listings
- Career Development, Training & Resume Building Tools
- Employee Rights, Protections & Financial Assistance
- Starting a Business & Entrepreneurship
- Health, Support & Advocacy

### For Employers:

- Funding & Incentives
- Upskilling & Training
- Procurement Opportunities
- Data, Business Strategy & Continuity
- Start-ups

Mobilize Montgomery | [Mobilize-Montgomery.com](https://Mobilize-Montgomery.com)



# THANK YOU!

## United in Service and Support

ONLINE INFORMATIONAL SERIES