

Longmead Crossing Stormwater Management Pond Improvement

HOA Meeting

May 21, 2024

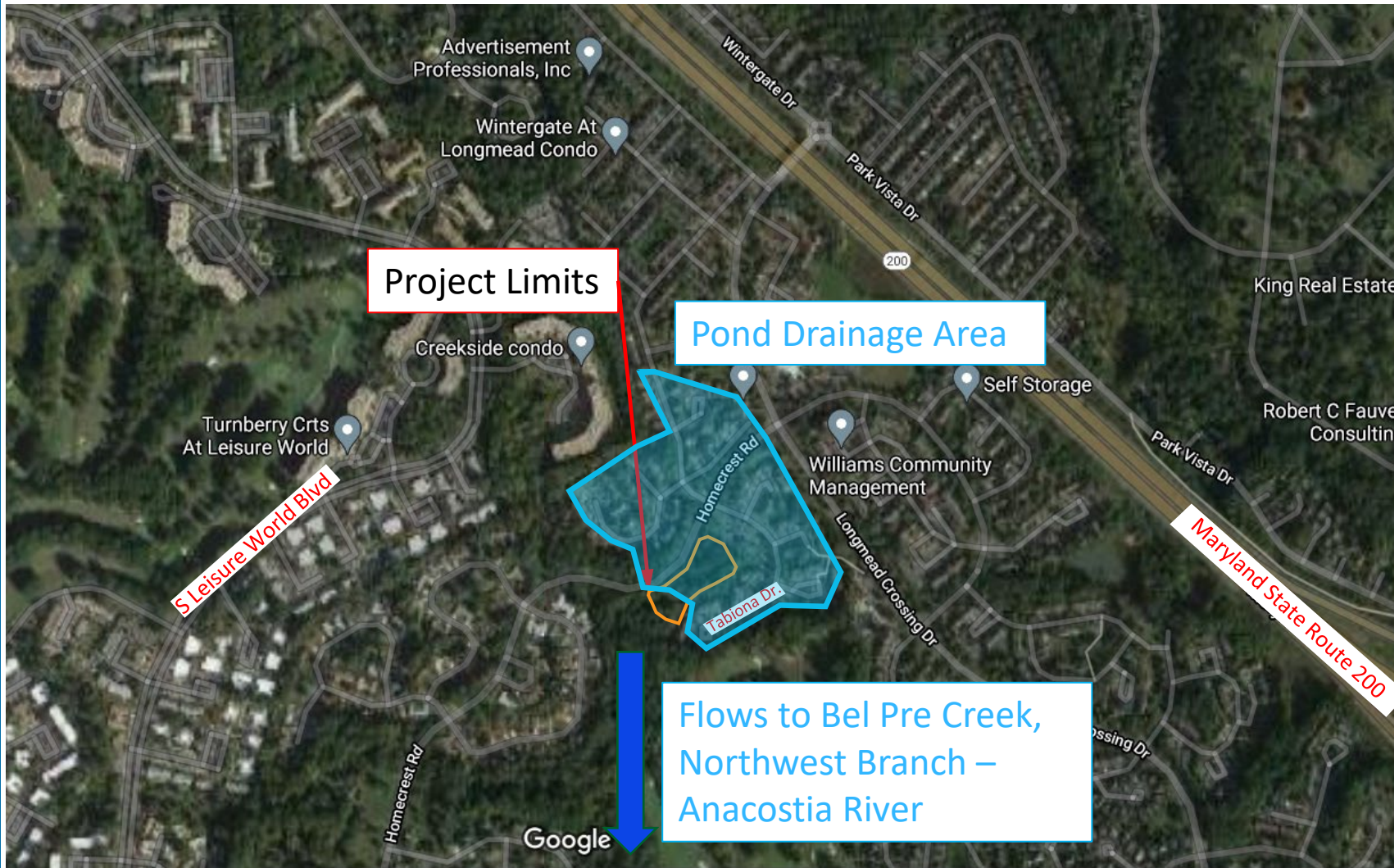


Doug Marshall
Project Planner



**DEPARTMENT OF
ENVIRONMENTAL
PROTECTION**
MONTGOMERY COUNTY • MARYLAND

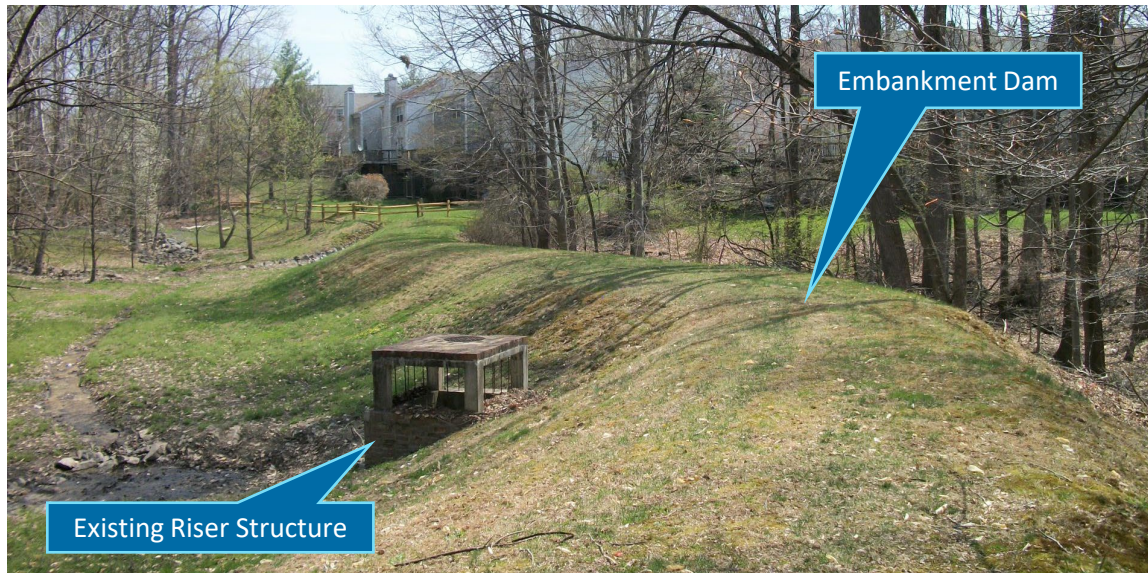
Project Location



Existing Longmead Crossing Pond

Constructed in 1985

- **Stormwater Management Dry Pond**
 - Provides minimal water quality benefits
- **Four Inflow Channels**
 - One specifically in poor condition, heavily eroded
- **14' High Earth Embankment Dam**
 - Not up to current Maryland standards
- **Existing Concrete Riser Structure**
 - Regulates flow out of pond



Project Objectives

- **Stormwater Management**

- Increase water storage capacity and water quality treatment.

- **Stream Protection**

- Reduce the rate of flow out of the pond after storms to help protect downstream stream channels from erosion (Bel Pre Creek, Northwest Branch and the Anacostia River)

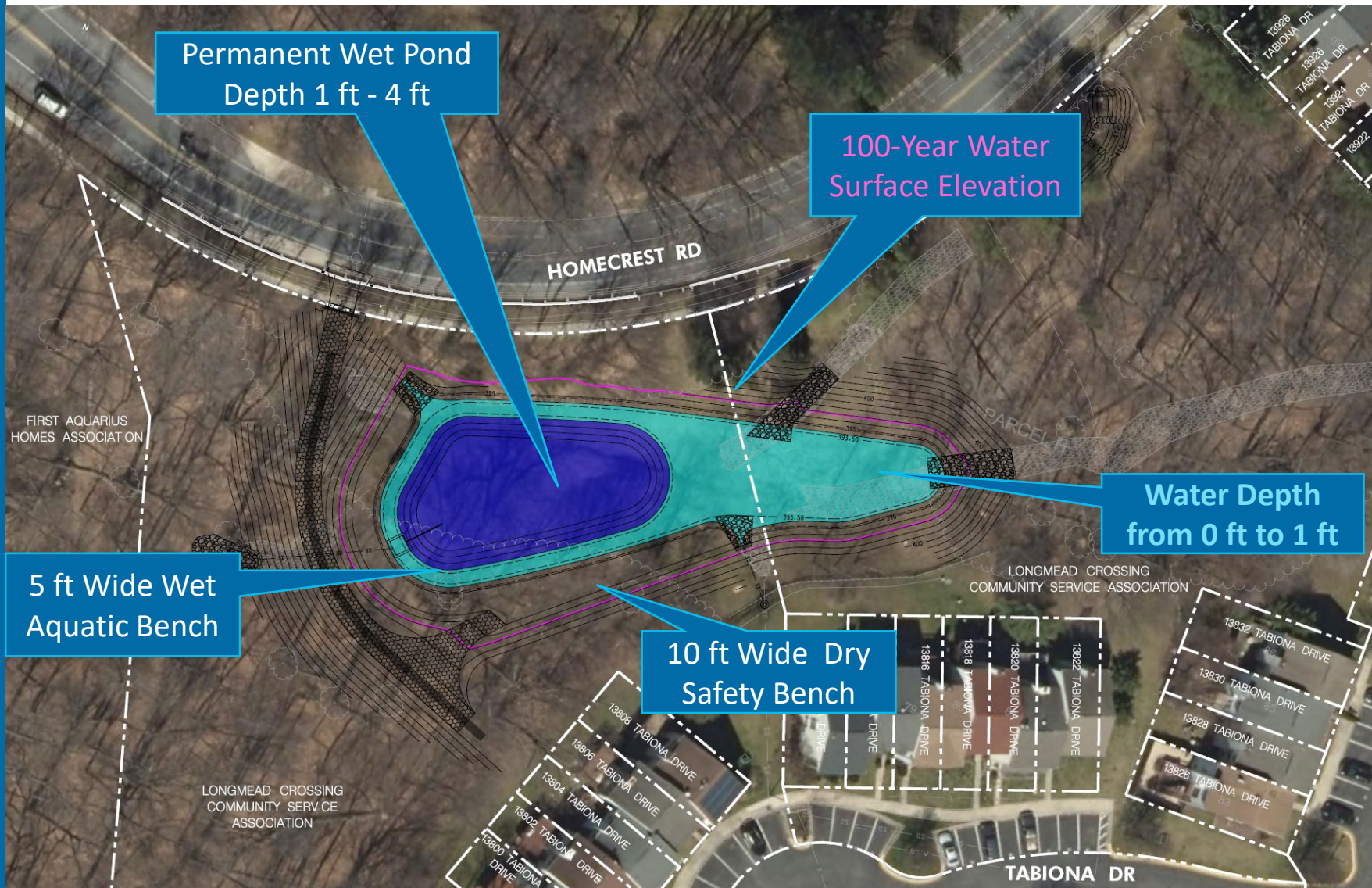
- **Maintenance**

- Replace deteriorated pond infrastructure, such as the riser structure and spillway pipe through the dam.

- **Aesthetics/Environment**

- Provide landscaping that improves habitat and aesthetics both in and around the pond

Proposed Design – Water Depth



Permanent Wet Pond
Depth 1 ft - 4 ft

100-Year Water
Surface Elevation

Water Depth
from 0 ft to 1 ft

5 ft Wide Wet
Aquatic Bench

10 ft Wide Dry
Safety Bench

HOMECREST RD

FIRST AQUARIUS
HOMES ASSOCIATION

LONGMEAD CROSSING
COMMUNITY SERVICE ASSOCIATION

LONGMEAD CROSSING
COMMUNITY SERVICE
ASSOCIATION

TABIONA DR

13800 TABIONA DRIVE
13802 TABIONA DRIVE
13804 TABIONA DRIVE
13806 TABIONA DRIVE
13808 TABIONA DRIVE
13816 TABIONA DRIVE
13818 TABIONA DRIVE
13820 TABIONA DRIVE
13822 TABIONA DRIVE

13826 TABIONA DRIVE
13828 TABIONA DRIVE
13830 TABIONA DRIVE
13832 TABIONA DRIVE

Longmead Crossing Stormwater Management Plan

Limits of Disturbance (LOD) Outlined in Yellow



DATE	DESCRIPTION	DATE	APPROVAL

DATE: JAN 2022	CONTRACT NO.:
DESIGNED BY: [Signature]	FILE NUMBER:
CHECKED BY: [Signature]	FILE NUMBER:
DATE: [Date]	FILE NUMBER:

THESE PLANS AND SPECIFICATIONS FOR THE LONGMEAD CROSSING STORMWATER MANAGEMENT PLAN ASSET #11060 WERE PREPARED BY THE ENGINEER, PROJECTS FOR ENVIRONMENTAL CONSULTING AND DESIGN, INC. (PECD) FOR THE COUNTY OF MONTGOMERY, MARYLAND. THE ENGINEER HAS CONDUCTED VISUAL INSPECTION AND VERIFICATION AND IS NOT PROVIDING ANY GUARANTEE OF ACCURACY OR COMPLETENESS OF THESE PLANS AND SPECIFICATIONS.

LONGMEAD CROSSING ASSET #11060 STORMWATER MANAGEMENT PLAN

DPS SCS/SW SHEET NO. 8 OF 26 SW-01

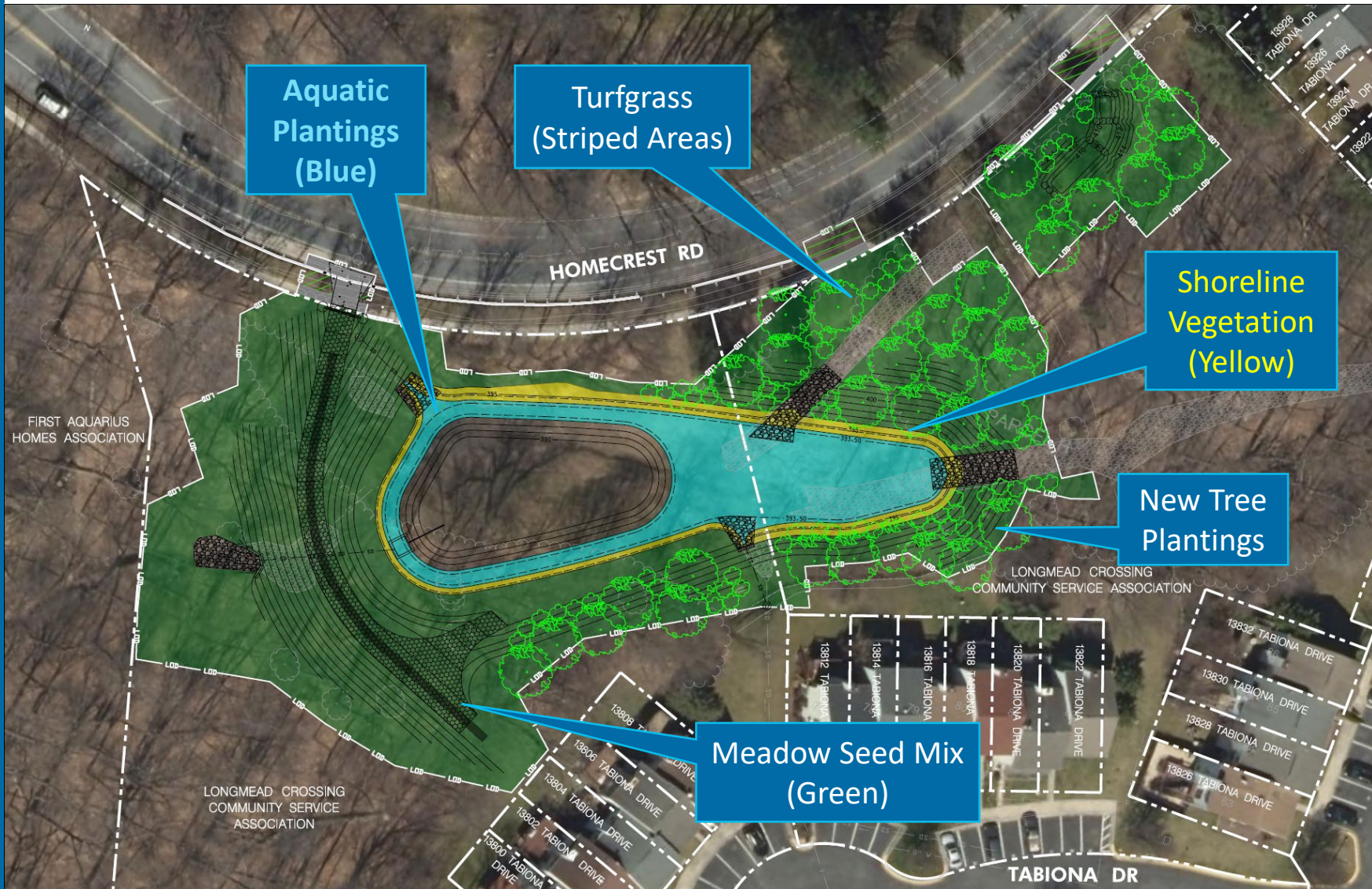
Maryland Department of the Environment
Water and Science Administration
Dum Safety Division

William S. Ashby, P.E., R.S.
Date: December 22, 2022
Small Pond Approval # 22-PD-0811



PROFESSIONAL CERTIFICATION
I HEREBY CERTIFY THAT THESE DOCUMENTS WERE PREPARED OR APPROVED BY ME, AND THAT I AM A DULY LICENSED PROFESSIONAL ENGINEER UNDER THE LAWS OF THE STATE OF MARYLAND.
LICENSE # 2889
EXPIRATION DATE: 03/05/2024

Proposed Design – Vegetation



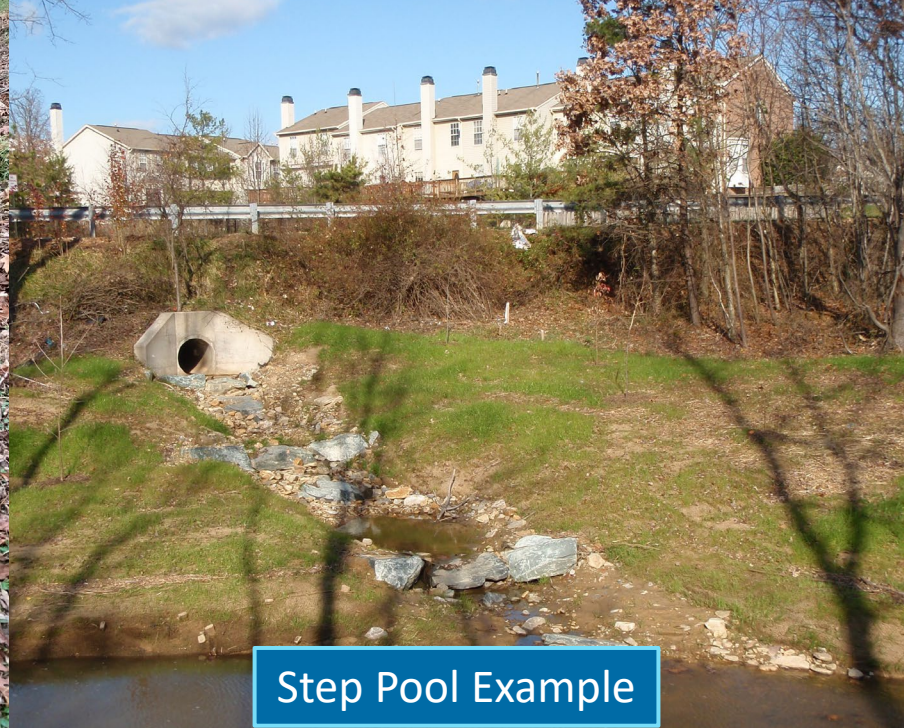
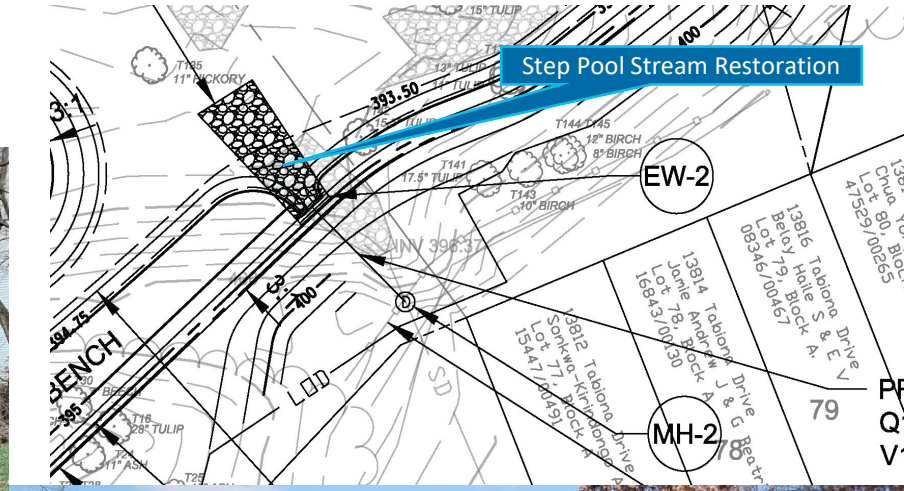
Plant Schedule

	Common Name	Size	Number
Trees	White Oak	2" CAL.	12
	Pin Oak	2" CAL.	13
	Tulip Poplar	2" CAL.	9
	American Beech	2" CAL.	11
	Eastern Red Cedar	2" CAL.	4
	Eastern Redbud	2" CAL.	4
	Sycamore	2" CAL.	11
	Northern Red Oak	2" CAL.	2
			66
Shrubs	Common Elderberry	4' HT.	14
	Black-Haw Viburnum	4' HT.	10
	Buttonbush	4' HT.	13
			37
Aquatic Plants	Bristly Sedge	1 Gal.	554
	Broadleaf Arrowhead	1 Gal.	554
	Soft Rush	1 Gal.	554
	Pickrel Weed	1 Gal.	554
	Woolgrass	1 Gal.	198
	Swamp Milkweed	1 Gal.	198
	Rice Cut Grass	1 Gal.	198
	Switchgrass	1 Gal.	198
			3,008

Proposed Design – Inflow Step Pool



Existing Channel



Step Pool Example

Project Benefits

- **Water** – improved water quality and reduction in stream erosion through better management of runoff.
- **Environmental** – Increased aquatic and riparian habitat through landscaping within and around the pond.
- **Aesthetic** – increased aesthetic appeal through repair of eroding inflow channels and new plantings.
- **Maintenance** – Replacement of pond infrastructure (riser and spillway pipe) that will reduce the need for structural repairs.

Pond Examples – Kemp Mill



Construction Schedule

- Notice to Proceed May 30, 2024
- Limits Of Disturbance Set June 2024
- Substantial Completion March 2025
- **Final Completion April 2025**
- Landscape Warranty September 2025

What to Expect During Construction

- **Resident Notification**

- Project Website
- Project Sign

- **Duration**

- About 9 months

- **Construction Hours**

- Monday through Friday, 7AM – 5PM

- **Safety**

- Fencing around construction

- **Traffic Impacts**

- Minor from construction vehicles entering and exiting the construction entrance on Homecrest Road during the day
- Sidewalk Detour on Homecrest Road



Questions?

Contact: Doug Marshall

Watershed Project Planner

Douglas.Marshall@montgomerycountymd.gov

240-777-7767

Project Website:

<https://www.montgomerycountymd.gov/water/restoration/longmead-crossing.html>

OR

Google “Longmead Crossing Stormwater Pond”

