

Norbeck Manor HOA: SWMF Repair and Improvement Project


Public Meeting

July 7th, 2022



**DEPARTMENT OF
ENVIRONMENTAL
PROTECTION**
MONTGOMERY COUNTY • MARYLAND

Agenda

- 
- Project Background
 - Pond Maintenance Improvements
 - What to Expect
 - Questions

Project Location



Watershed Restoration and Stormwater Facility Maintenance

- Over 14,000 stormwater facilities inspected by County
- Capital Projects
 - Structural Maintenance
 - Dredging
 - Pipe Replacements
 - Safety improvements
 - Updates to Existing Stormwater Management
 - New Stormwater Management



Existing Norbeck Manor HOA Pond

- **Stormwater Management Wet Pond**
 - Sediment Accumulated – reduced water storage and water quality treatment
- **12' High Earth Embankment Dam**
 - Deteriorating Principal Spillway Pipe
- **Existing Corrugated Metal Riser**
 - Regulates flow out of pond – Potential to improve

Embankment
Dam



Existing Pond
Riser/Control Structure

Need for Repair

- Dam is safe but doesn't meet current industry design criteria
- 4-6 feet of sediment deposition within the pond
- Dam's drain system is deteriorated and in need of repair (principal spillway pipe) and replacement (riser control structure)

2015 & 2018 –
Pipe Rusting and
Corrosion
Development Noted

Deteriorating and
Rusting Riser
Control Structure
To Be Replaced



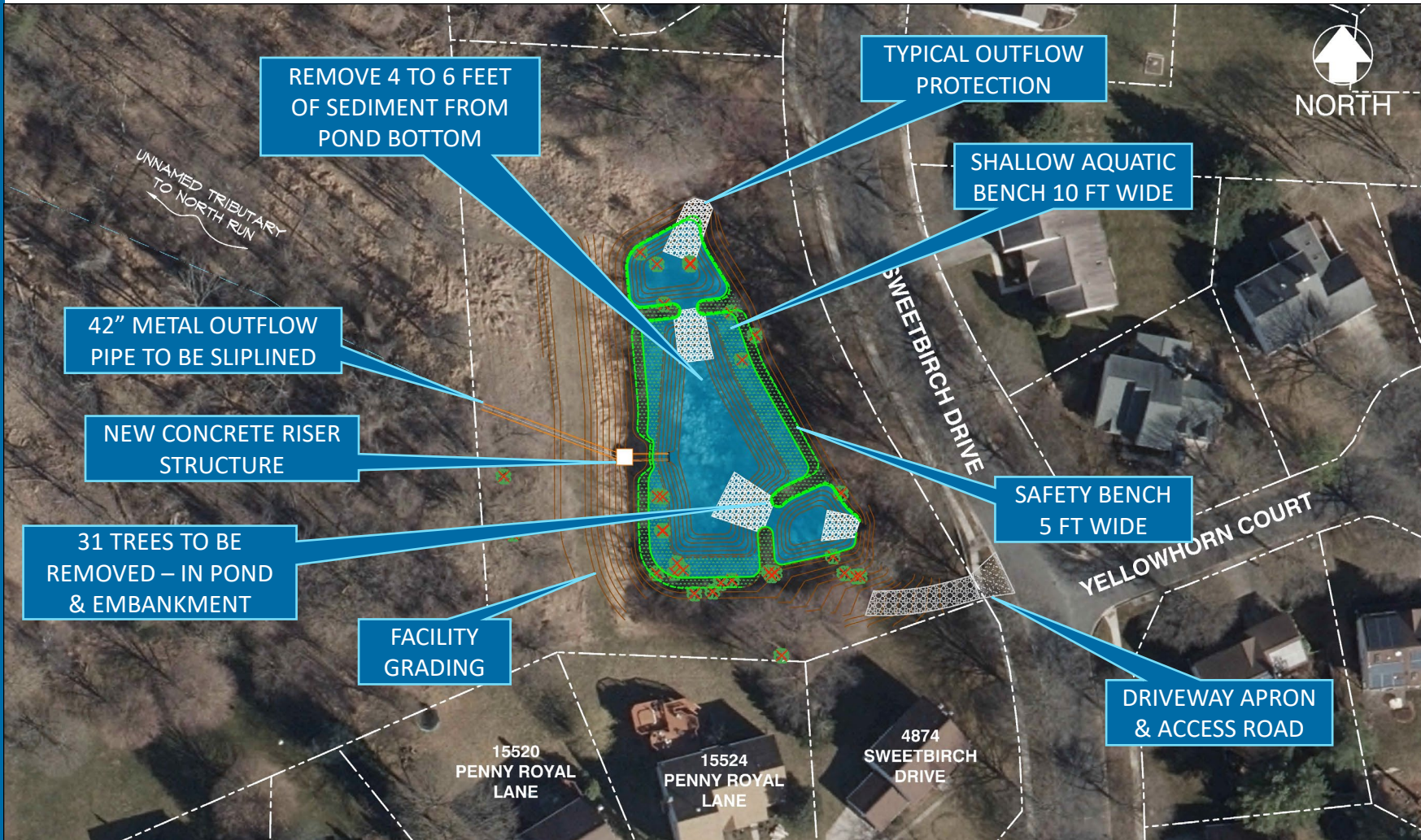
Project Objectives

- **Stormwater Management**
 - Design that restores or improves water quality treatment
- **Principal Spillway Pipe Repair**
 - Replace deteriorating riser control structure and slipline outfall pipe according to current design standards
- **Maintenance**
 - Replace outdated pond elements with updated features that require less frequent maintenance
 - Remove sediment from pond bottom

Project Impact Limits



Proposed Design



Proposed Design - Vegetation

NO WOODY
VEGETATION/TREES
WITHIN 15 FT OF DAM
EMBANKMENT

AQUATIC BENCH
DEPTH 0.5 FT

GRASS
PLANTING

SAFETY BENCH
5 FT WIDE – ABOVE
NORMAL WATER LEVEL



AQUATIC PLANTINGS



MARSH
HIBISCUS



BLUE FLAG
IRIS



PICKEREL-
WEED



SWAMP
MILKWEED

UNNAMED TRIBUTARY
TO NORTH RUN

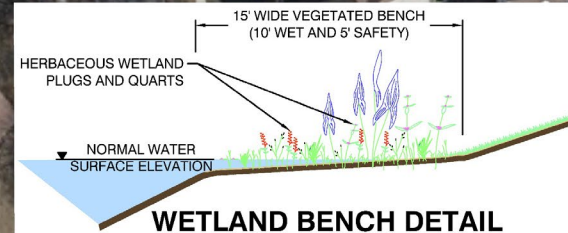
SWEETBIRCH DRIVE

YELLOWHORN COURT

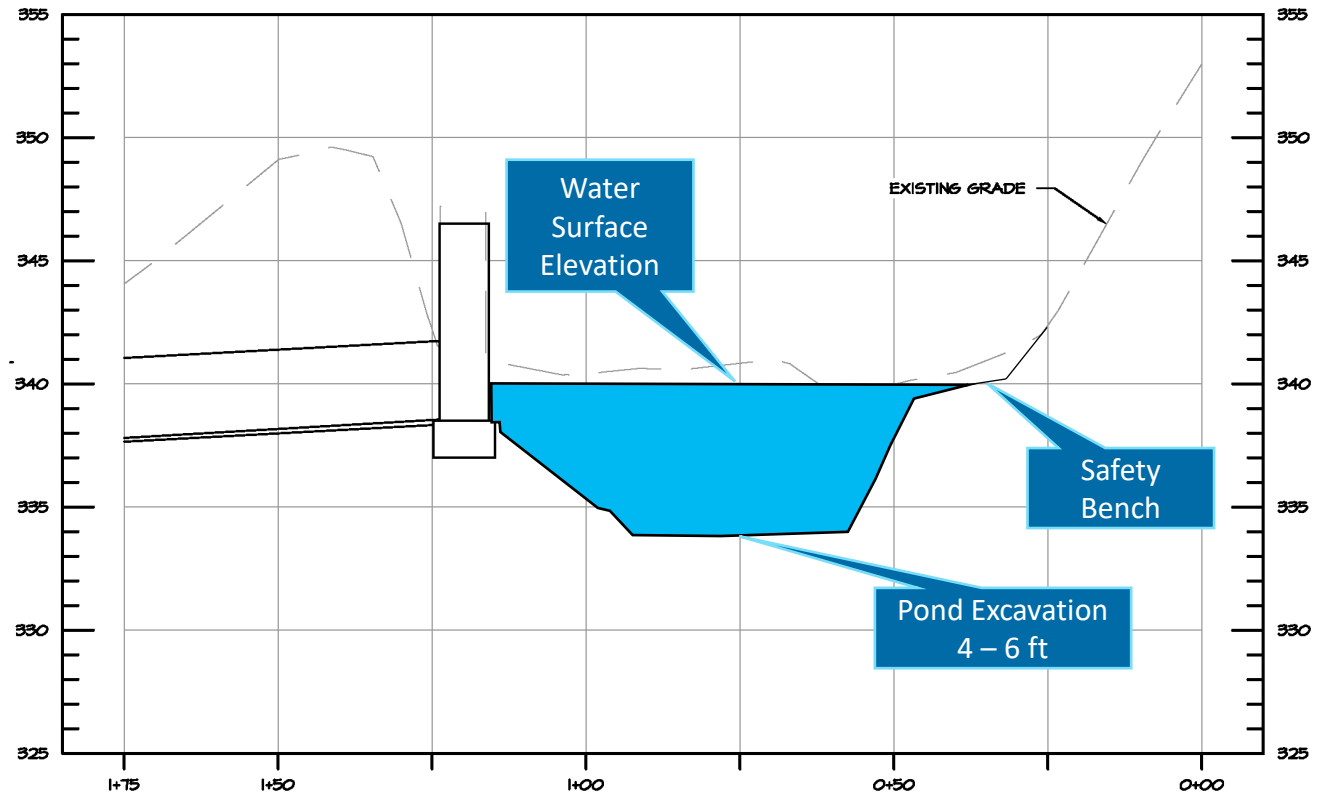
15520
PENNY ROYAL
LANE

15524
PENNY ROYAL
LANE

4874
SWEETBIRCH
DRIVE



Sediment Removal



Pond Profile

Wetland Bench Examples

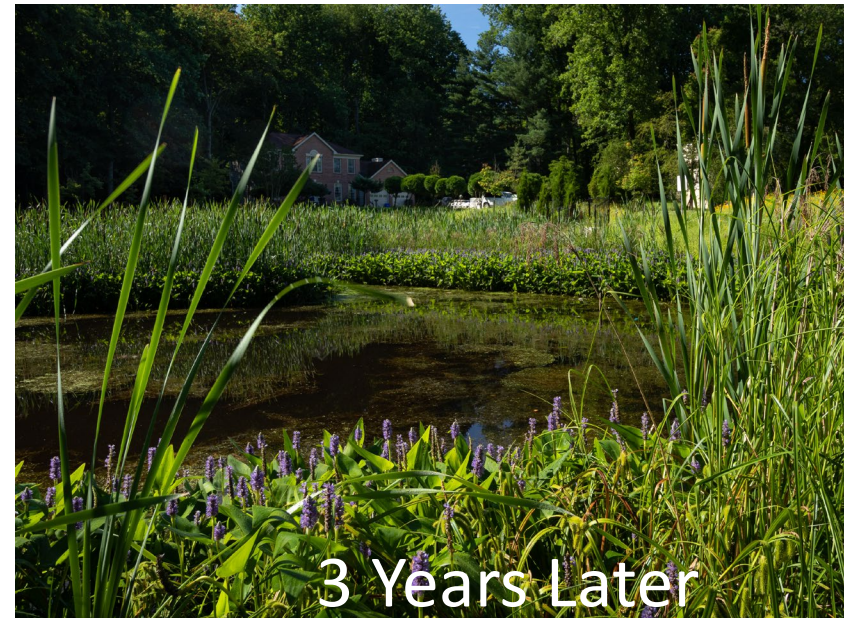


Immediately after construction

After two years



Pond Examples – Kemp Mill



Project Benefits

- **Aesthetics/Environment** – Provide landscaping that improves habitat and aesthetics.
- **Maintenance** – safer operating structures that will require less frequent structural maintenance in the future.
 - Dredging of pond removes accumulated sediments and restore storage volume
- **Stream Protection** – Provide design elements that better regulate pond discharge and protect water quality in the North Branch of Rock Creek.

Pond Repair Schedule

- ✓ Design and Permitting Fall 2022
- Permits Secured Winter 2022
- Project Bidding Early 2023
- Construction Summer 2023

What to Expect During Construction (2023)

- **Resident Notification**

- Project Website
- Project Sign

- **Duration**

- About 4-6 months

- **Construction Hours**

- Monday through Friday,
7AM – 4PM

- **Safety**

- Fencing around construction
- Follow applicable COVID-19 precautions at time

- **Traffic**

- Minor from entering and exiting construction traffic and contractor parking during the day



Other DEP Programs for Residents

- RainScapes – rainscapes.org



- Tree Montgomery – treemontgomery.org



- Organic Lawn Care

- www.montgomerycountymd.gov/lawns

- Residential Energy Program

- www.montgomerycountymd.gov/green/energy/home

- Volunteer

- www.montgomerycountymd.gov/water/volunteer



Questions?

Contact: Christy Ciarametaro

Watershed Project Planner

Christy.Ciarametaro@montgomerycountymd.gov

240-777-7720

Project Website:

<https://www.montgomerycountymd.gov/water/>

Or

Google "Northock Manor Pond"

