

Plum Gar II – Stormwater Pond Retrofit

Doug Marshall – Project Planner
Montgomery County Dept of Environmental Protection

Briefing for Seneca Park North HOA

August 2, 2023



**DEPARTMENT OF
ENVIRONMENTAL
PROTECTION**
MONTGOMERY COUNTY • MARYLAND



Plumgar II Stormwater Management Pond (July 2023)



Plumgar II Stormwater Management Pond (2018)



Plumgar II Stormwater Management Pond (July 2023)

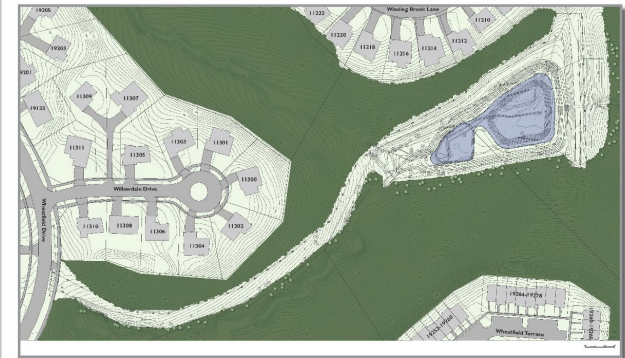






STORMWATER RETROFIT PROJECTS PLUMGAR II REGIONAL POND

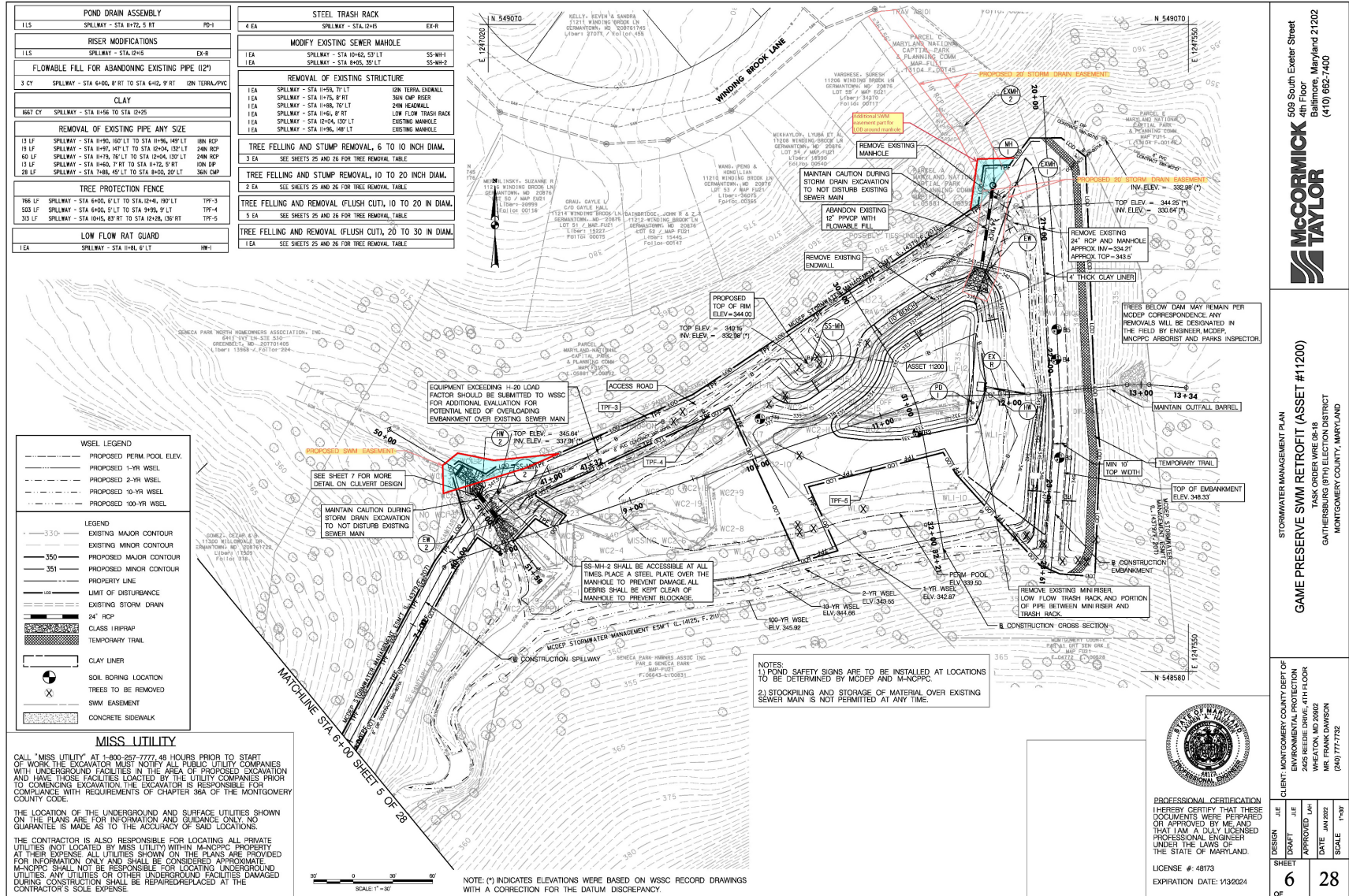
McCormick
Engineers & Planners
Since 1946 Taylor



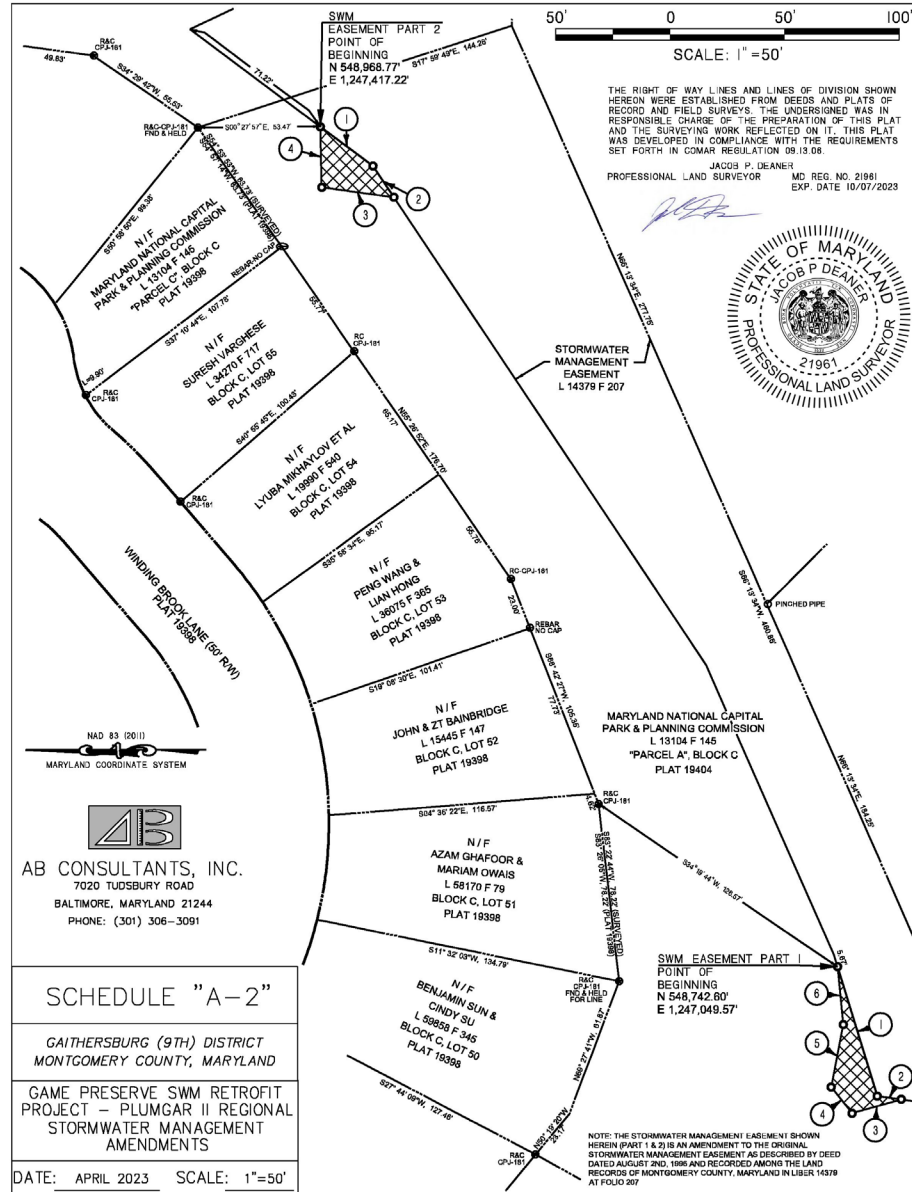
Construction Access Map

Plumgar II – Stormwater Pond Site Plan

New Easement Areas Highlighted in Blue



Depiction of New Easement Areas In Easement Document



Plum Gar II – Planting Plan

Tree Removal Table		
ID Number	Tree Removals	Notes
300	7" Am. Sycamore	Flush Cut
302	12" Am. Sycamore	Flush Cut
464	8" Chestnut Oak	Tree and Stump Removal
493	10" Chestnut Oak	Tree and Stump Removal
530	9" Tulip Poplar	Tree and Stump Removal
531	9" Tulip Poplar	Tree and Stump Removal
532	10" Tulip Poplar	Tree and Stump Removal
533	14" Tulip Poplar	Tree and Stump Removal
534	6" Tulip Poplar	Tree and Stump Removal
535	8" Tulip Poplar	Tree and Stump Removal
536	13" Tulip Poplar	Tree and Stump Removal
552	18" White Oak	Flush Cut

Tree Removal Table		
ID Number	Tree Removals	Notes
576	9" Red Maple	Flush Cut
577	10" Tulip Poplar	Flush Cut
578	7" Black Gum	Flush Cut
599	14" Red Maple	Flush Cut
849	13" Am. Elm	Flush Cut
850	19" 15" 20" Tulip Poplar	Flush Cut
851	11" Red Maple	Flush Cut
852	12" Am. Sycamore	Flush Cut
853	7" Am. Sycamore	Flush Cut
854	13" Am. Sycamore	Flush Cut
855	17" 12" Am. Sycamore	Flush Cut

- NOTES:
1. FOR TREES WITH BRANCHES HIGHER THAN FOUR FEET OFF THE GROUND AND LESS THAN 2.5-INCH CALIPER, USE 48" HIGH BIODEGRADABLE TREE SHELTER PROTECTORS BY ECODOPT, LLC OR APPROVED EQUAL SEE DETAIL ON SHEET 28.
 2. USE METAL DEER PROTECTION FENCING FOR ALL NEW SHRUBS, AND ALL NEW TREES WITH BRANCHES LOWER THAN FOUR FEET. SEE DETAIL ON SHEET 28.
 3. WILDLIFE GOOSE FENCING IS TO BE REMOVED BY DEP AFTER TWO YEARS. SEE DETAIL ON SHEET 28.
 4. SOIL STABILIZATION MATTING SHOULD BE PLACED OVER ALL SEEDED AREAS AND TO THE 338.00 CONTOUR ANY SOIL STABILIZATION MATTING REMAINING AFTER TWO YEARS IS TO BE REMOVED BY DEP.

Planting Table					
CANOPY TREES					
Symbol	Botanical Name	Common Name	Spacing	Size	Quantity
QA	<i>Quercus alba</i>	White Oak	18" O.C.	2" CAL. B&B	4
QR	<i>Quercus rubra</i>	Northern Red Oak	18" O.C.	2" CAL. B&B	5
QP	<i>Quercus palustris</i>	Pine Oak	18" O.C.	2" CAL. B&B	5
NS	<i>Nyssa sylvatica</i>	Black Gum	18" O.C.	2" CAL. B&B	5
LT	<i>Liriodendron tulipifera</i>	Tulip Poplar	18" O.C.	2" CAL. B&B	5
FG	<i>Fagus grandifolia</i>	American Beech	18" O.C.	2" CAL. B&B	4
UNDERSTORY TREE					
Symbol	Botanical Name	Common Name	Spacing	Size	Quantity
EC	<i>Cercis canadensis</i>	Eastern Redbud	18" O.C.	2" CAL. B&B	3
SHRUBS					
Symbol	Botanical Name	Common Name	Height	Quantity	
CA	<i>Cornus amomum</i>	Silky Dogwood	24"-36"	21	
CO	<i>Cephalanthus occidentalis</i>	Common Buttonbush	24"-36"	14	

ALL THREE ZONES: QUARTS, 15" ON CENTER	
FREQUENTLY FLUCTUATING ZONE PLANTINGS ELEV. 341.00 - 338.50	
% FREQUENCY	SPECIES
50	<i>Juncus effusus</i> /Soft Rush
25	<i>Verbena hastata</i> /Swamp Verbena
25	<i>Oncoclea sensibilis</i> /Sensitive Fern
SHALLOW WATER PLANTINGS (0 TO 6" DEPTH) ELEV. 339.50 - 339.00	
% FREQUENCY	SPECIES
30	<i>Iris versicolor</i> /Blue Flag
40	<i>Pontederia cordata</i> /Pickerelweed
30	<i>Peltandra virginica</i> /Arrow Arum
SUBMERGED AQUATIC PLANTINGS (6" TO 18" DEPTH) ELEV. 339.00 - 338.00	
% FREQUENCY	SPECIES
40	<i>Sparganium americanum</i> /American bur-reed
40	<i>Sagittaria latifolia</i> /Duck Potato
20	<i>Sagittaria latifolia</i> /Duck Potato

PLANTING SCHEDULE		
SYMBOL	AREA (SQ)	DESCRIPTION (PER SQUARE YARD)
1,004	4,054	RIPARIAN SEED (UPLAND AREAS) (SEE SHEET 28 FOR SEED MIX)
218		SOD (AREA OF TRAIL RELOCATION)
1,300		FREQUENTLY FLUCTUATING ZONE PLUG PLANTINGS
446		SHALLOW WATER PLUG PLANTINGS
604		SUBMERGED AQUATIC PLUG PLANTINGS

MISS UTILITY

CALL "MISS UTILITY" AT 1-800-267-7777 48 HOURS PRIOR TO START OF WORK THE EXCAVATOR MUST NOTIFY ALL PUBLIC UTILITY COMPANIES WITH UNDERGROUND FACILITIES IN THE AREA OF PROPOSED EXCAVATION AND HAVE THOSE FACILITIES LOCATED BY THE UTILITY COMPANIES PRIOR TO COMMENCING EXCAVATION THE EXCAVATOR IS RESPONSIBLE FOR COMPLIANCE WITH REQUIREMENTS OF CHAPTER 30A OF THE MONTGOMERY COUNTY CODE.

THE LOCATION OF THE UNDERGROUND AND SURFACE UTILITIES SHOWN ON THE PLANS ARE FOR INFORMATION AND GUIDANCE ONLY. NO GUARANTEE IS MADE AS TO THE ACCURACY OF SAID LOCATIONS.

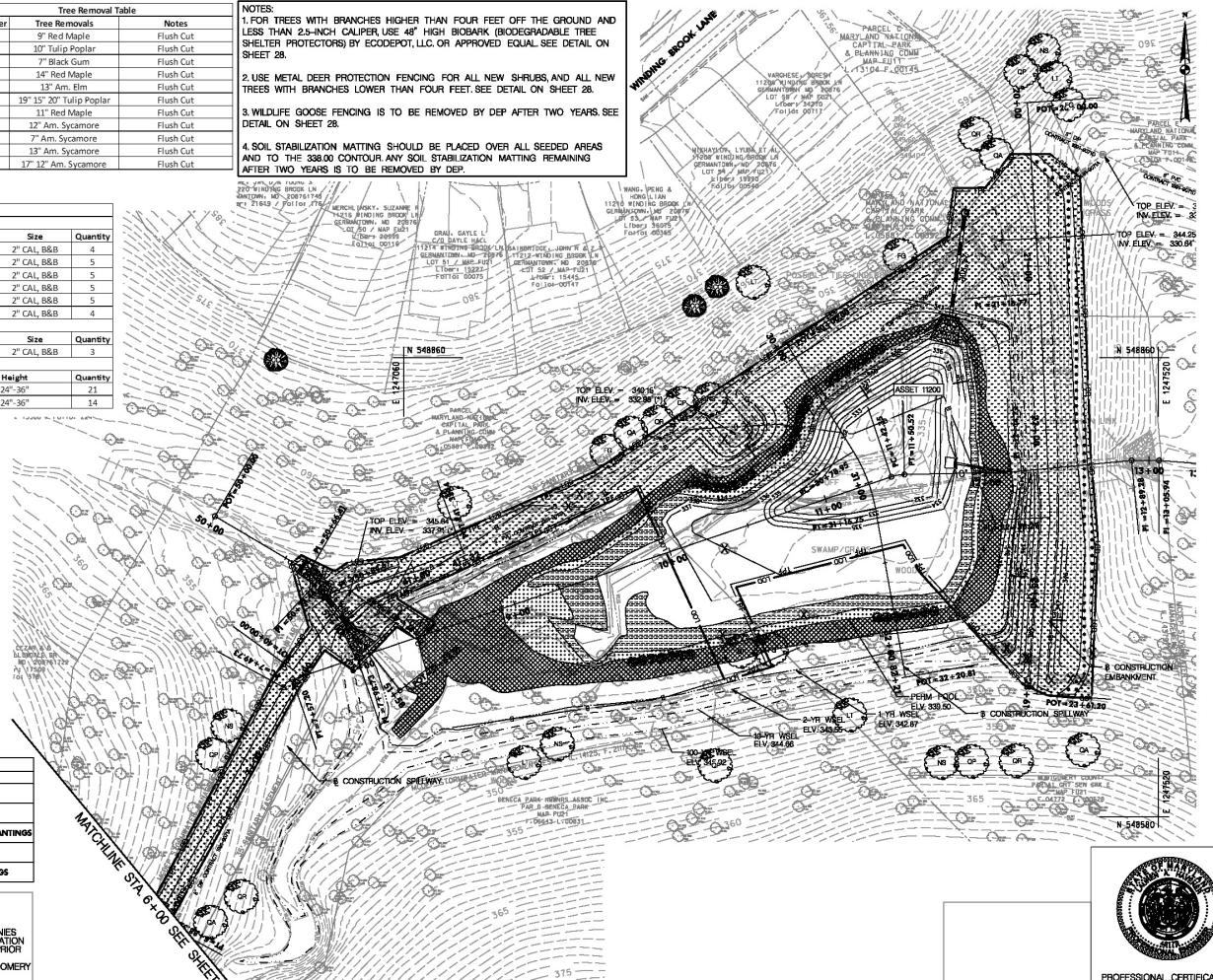
THE CONTRACTOR IS ALSO RESPONSIBLE FOR LOCATING ALL PRIVATE UTILITIES (NOT LOCATED BY MISS UTILITY) WITHIN M-NCPPC PROPERTY AT THEIR EXPENSE. ALL UTILITIES SHOWN ON THE PLANS ARE PROVIDED FOR INFORMATION ONLY AND SHALL BE CONSIDERED APPROXIMATE. M-NCPPC SHALL NOT BE RESPONSIBLE FOR LOCATING UNDERGROUND UTILITIES. ANY UTILITIES OR OTHER UNDERGROUND FACILITIES DAMAGED DURING CONSTRUCTION SHALL BE REPAIRED/REPLACED AT THE CONTRACTOR'S SOLE EXPENSE.

SCALE 1" = 30'

NOTE: (*) INDICATES ELEVATIONS WERE BASED ON WSSC RECORD DRAWINGS WITH A CORRECTION FOR THE DATUM DISCREPANCY.

AT THE DIRECTION OF M-NCPPC AND MDCBP REMOVE NON-NATIVE ORNAMENTAL GRASSES IN NORTHEASTERN VICINITY OF PROJECT PRIOR TO SEEDING/PLANTING.

PLANTING KEY	
	CANOPY TREE
	UNDERSTORY TREE
	CORNUS AMOMUM / SILKY DOGWOOD
	CEPHALANTHUS OCCIDENTALIS / COMMON BUTTONBUSH



PROFESSIONAL CERTIFICATION
I HEREBY CERTIFY THAT THESE DOCUMENTS WERE PREPARED OR APPROVED BY ME AND THAT I AM A DULY LICENSED PROFESSIONAL ENGINEER UNDER THE LAWS OF THE STATE OF MARYLAND.
LICENSE # 48173
EXPIRATION DATE 11/30/2024

505 South Exeter Street
4th Floor
Baltimore, Maryland 21202
(410) 682-7400
MCCORMICK TAYLOR

LANDSCAPE PLAN
GAME PRESERVE SWM RETROFIT (ASSET #11200)
GANTHERSBURG (PFD) ELEV. ON DISTRICT
MONTGOMERY COUNTY, MARYLAND

CLIENT: MONTGOMERY COUNTY DEPT OF ENVIRONMENTAL PROTECTION
2465 REDDIE DRIVE, 4TH FLOOR
BETHESDA, MD 20814
PROJECT NO. 2020-0001
DATE: JAN 2021
SCALE: 1"=30'
SHEET 26 OF 28

Plum Gar II – Project Schedule

- **Final Plans – Fall 2023**
- **Construction Start – Summer 2024**
- **Construction Complete – Winter 2024**

Questions?

Contact: Doug Marshall

Project Planner, Watershed Restoration Division

Douglas.Marshall@MontgomeryCountyMD.gov

240-777-7767

Project Webpage:

<https://www.montgomerycountymd.gov/water/restoration/seneca-park-plum-gar-II.html>



DEPARTMENT OF
ENVIRONMENTAL PROTECTION
MONTGOMERY COUNTY • MARYLAND