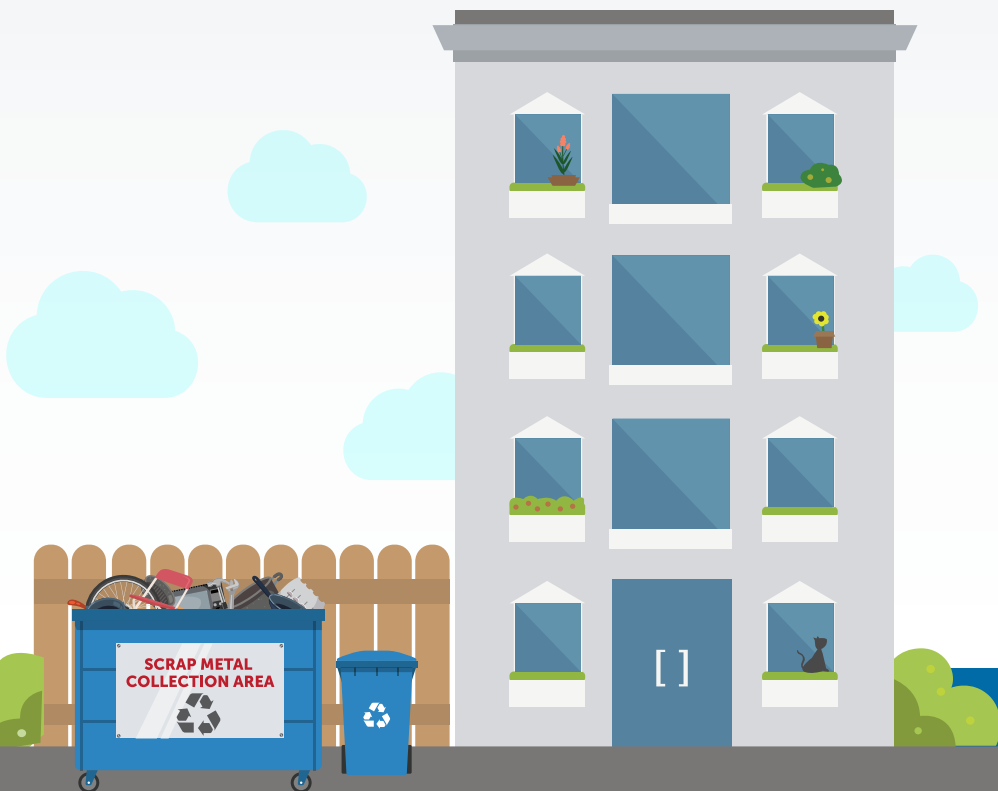


- Check with your scrap metal recycling collection company or facility for proper procedures to handle scrap metal. Ensure that any contract for construction/demolition work on your property includes requirements for the contractor to recycle scrap metal.
- Provide educational materials to new residents on how to recycle scrap metal and post notices or hold events throughout the year as reminders.
- If scrap metal recycling containers are not available at all recycling collection sites, post notices at those sites educating residents on where to place their scrap metal.
- All scrap metal collected and recycled from your property must be reported to Montgomery County on your Annual Multi-Family Recycling and Waste Reduction Report. Keep records of how much and how frequently you recycle this material.



Did You Know?

Recycling is the law in Montgomery County, Maryland. Executive Regulation 1-15 requires all multi-family properties to recycle and report their recycling progress to the County on an annual basis. In addition to scrap metal, all apartments and condominiums must have recycling programs for cardboard and mixed paper, commingled materials (glass bottles and jars; plastic bottles, containers, jars, tubs, trays, domes, lids, caps, pails, buckets, flower pots, and #1 PET clamshell containers and packaging; aluminum and bi-metal steel/tin cans; and aluminum foil products), yard trim, and Christmas trees. To ensure your properties waste reduction and recycling program complies with County requirements, contact the Montgomery County TRRAC (Think Reduce and Recycle) Program to schedule an on-site visit and assessment.

For more information, contact:

Montgomery County, Maryland
 Department of Environmental Protection
 Recycling and Resource Management Division
 Waste Reduction and Recycling Section
 2425 Reddie Drive, 4th Floor
 Wheaton, Maryland 20902

MontgomeryCountyMD.gov/recycling
 Phone: 311 or (240) 777-0311 • TTY: MD Relay 711

Recycle More! Recycle Right!

Follow us on social media!



Facebook: MyGreenMontgomery
 Twitter & Instagram: MyGreenMC
 Flickr & Youtube: MCRcycles

How to Recycle Scrap Metal

At Your Apartment or Condominium



This information is available in an alternate format by calling 240-777-6486.

Printed on recycled and recyclable paper.

rev 1/21



DEPARTMENT OF ENVIRONMENTAL PROTECTION
 MONTGOMERY COUNTY • MARYLAND



Think Reduce and Recycle at Apartments and Condominiums

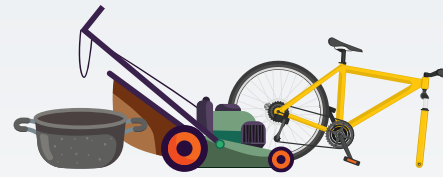
What is Scrap Metal?

Scrap metal is any item that is predominantly metal. Montgomery County Executive Regulation 1-15 requires scrap metal to be recycled at multi-family properties. Scrap metal items you might find in an apartment or condominium include:

- Refrigerators and Freezers
- Microwaves
- Stoves and Ovens
- Washers and Dryers
- Irons
- Toasters
- Tools and Toys
- Sinks
- Cooking Pots and Pans
- Shower Stalls
- Bicycles
- Grills
- Iron Furniture
- Aluminum Lawn Furniture
- Bed Frames
- Metal Cabinets
- Pipes and Rebar
- Humidifiers
- Window Air Conditioners
- Water Heaters
- Wire Clothes Hangers
- Aluminum Window Frames
- Aluminum, Steel, Iron, and Copper Items



Why Recycle Scrap Metal?



Metal is a non-renewable and therefore limited resource that is in very high demand. Without recycling, the amount of metal available to build new buildings, cars, and other items would gradually diminish. Recycling scrap metal is essential to a sustainable economy, and is the law in Montgomery County. It saves money, conserves energy, and reduces greenhouse gas emissions. Did you know that for every pound of steel recycled, enough energy is saved to light a 60-watt light bulb for more than a day?

How to Recycle Scrap Metal

All apartments and condominiums in Montgomery County are required to have scrap metal recycling programs in place that are accessible to their residents. Check with your property manager to find out how scrap metal is recycled at your property. Most properties have scrap metal recycling containers or storage areas available for residents to place their scrap metal for recycling.

Scrap metal recycling tips for residents:

- Ensure large scrap metal items do not block access for other residents to the scrap metal recycling area.
- Check with property management on when recycling is collected and set out large scrap metal items on that day.
- Do not place scrap metal items in trash containers or in commingled material recycling containers to avoid contamination.
- If you purchase a new appliance, check with the store to see if they will remove and recycle the old appliance for you.

Information for Property Owners/Managers

Property owners and managers are required to develop and maintain a scrap metal recycling program for their residents and for materials generated by property management during renovations and other projects. While residents may generate scrap metal on a less frequent basis than mixed paper or commingled materials, the same recycling requirements apply.

Tips for creating a successful scrap metal recycling program at your property:

- Place smaller-sized scrap metal recycling containers throughout the property for residents to use to recycle small scrap metal items such as pots, lamps, toasters, or wire clothes hangers.
- Establish a scrap metal recycling collection/storage area that is accessible to residents and large enough to accommodate larger scrap metal items such as appliances, bed frames, and bicycles. Scrap metal storage must be separate from bulk trash storage.
- Make sure scrap metal recycling containers/areas are well marked and accessible to residents.
- Contract for services with a scrap metal recycling collection company. Establish a convenient collection schedule based on your storage capacity (twice a month, once a month, every other month, on-call, etc.)
- If you do not contract for scrap metal recycling collection service, identify a scrap metal recycling facility where your property will self-haul the scrap metal. The Montgomery County Shady Grove Processing Facility and Transfer Station located at 16101 Frederick Road in Derwood, Maryland, accepts scrap metal for recycling at no charge.

