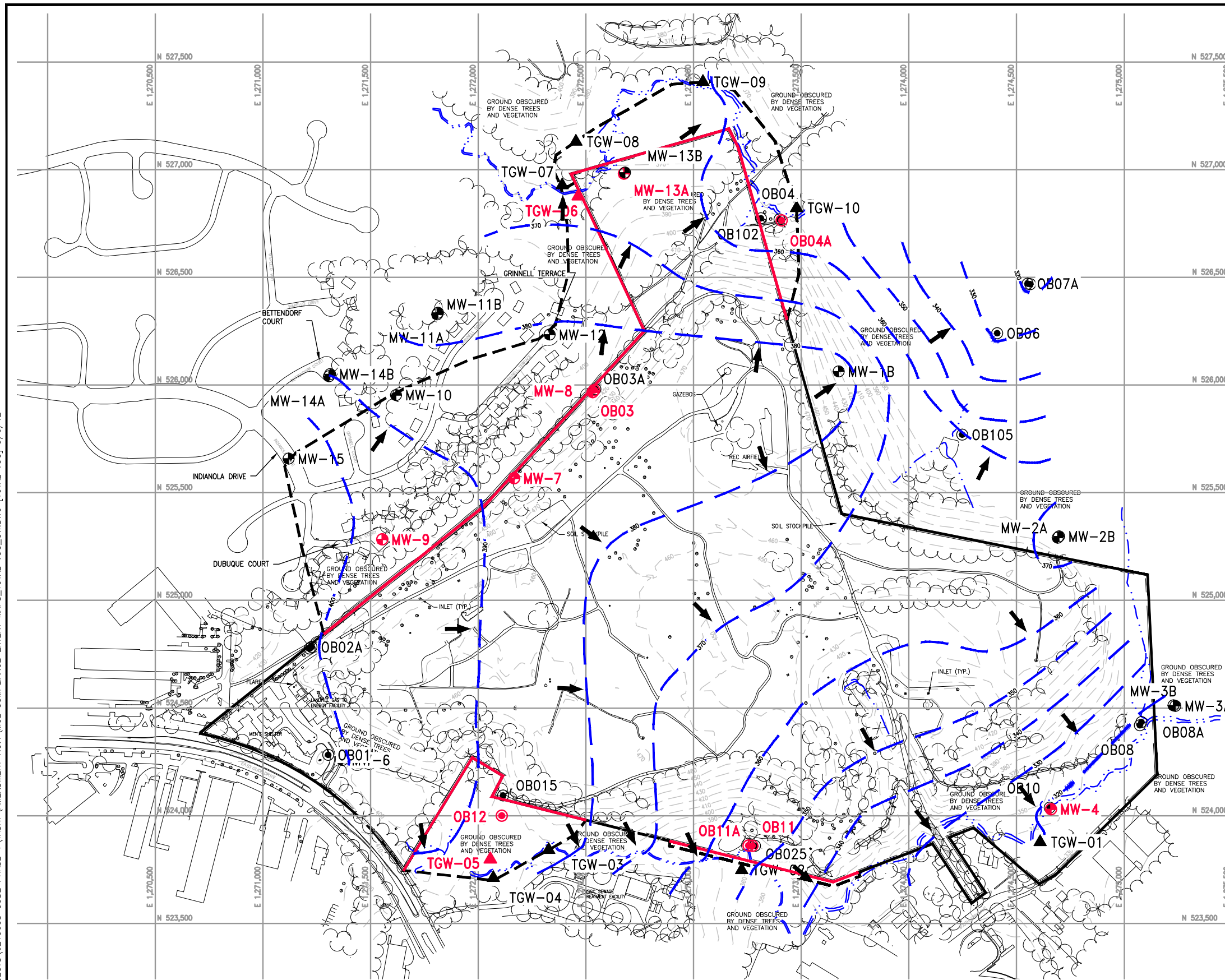


FILE PATH: G:\PROJECTS\6219608 GUID PHASE 1\TASK\AMENDMENT NO.1\MCL COMPLIANCE EXTENT MAPS\_TOTAL\_VOC\_GW.DWG [TOTAL VOC] 9/6/12



- NOTES:
1. TOPOGRAPHY COMPILED BY APPLIED MAPPING SOLUTIONS, INC. USING PHOTOGRAMMETRIC METHODS WITH PHOTOGRAPHY DATED 06/24/09 AND SUPPLEMENTED WITH FIELD SURVEY PERFORMED BY C.C. JOHNSON & MALHOTRA, P.C., OCTOBER 2009.
  2. HORIZONTAL DATUM IS NORTH AMERICAN DATUM OF 1983/91 (NAD-83/91). COORDINATE SYSTEM IS MARYLAND STATE PLANE, U.S. SURVEY FEET. VERTICAL DATUM IS NORTH AMERICAN VERTICAL DATUM OF 1988 (NAVD-88) WITH ELEVATIONS SHOWN IN FEET.
  3. MCL EXCEEDANCES AND INFERRED EXTENT OF POTENTIAL MCL EXCEEDANCES ARE A COMPOSITE OF THE APRIL (COUNTY) AND SEPTEMBER (NES AMENDMENT) 2011 SAMPLING EVENTS. (1,1-DICHLOROETHENE, 1,2-DIBROMOETHANE, 1,2-DICHLOROPROPANE, BENZENE, CADMIUM, CIS-1,2 DICHLOROETHENE, METHYLENE CHLORIDE, NITRATE, TETRACHLOROETHENE, TRICHLOROETHENE, AND VINYL CHLORIDE).

**LEGEND**

- 10-FT CONTOUR
- PROPERTY BOUNDARY
- STREAM
- EXISTING GROUNDWATER MONITORING WELL (INSTALLED PRIOR TO 2010)
- NEW GROUNDWATER MONITORING WELL (INSTALLED IN 2010 OR 2011)
- TEMPORARY GROUNDWATER MONITORING LOCATION
- SAMPLING LOCATION WITH ALL PARAMETERS DETECTED BELOW MCLs
- SAMPLING LOCATION WITH PARAMETERS DETECTED AT OR ABOVE MCLs
- COMPLIANCE WITH MCLs AT PROPERTY BOUNDARY
- MCL EXCEEDANCES AT PROPERTY BOUNDARY
- INFERRED EXTENT OF POTENTIAL MCL EXCEEDANCES
- GROUNDWATER CONTOUR INTERVAL (10 FEET)
- INFERRED GROUNDWATER FLOW

500 250 0 500  
GRAPHIC SCALE IN FEET



GUDE LANDFILL  
NATURE AND EXTENT STUDY  
AMENDMENT NO. 1  
MONTGOMERY COUNTY, MARYLAND

FIGURE 1  
OVERALL MCL COMPLIANCE EXTENT MAP  
APRIL AND SEPTEMBER 2011 SAMPLING EVENTS

DESIGNED BY PL/LJO	DRAWN BY AA	DATE APR. 2012	PROJECT NO. 62196.08
CHECKED BY PC	PROJECT MGR. JK	DRAWING NO. -	FIGURE 1