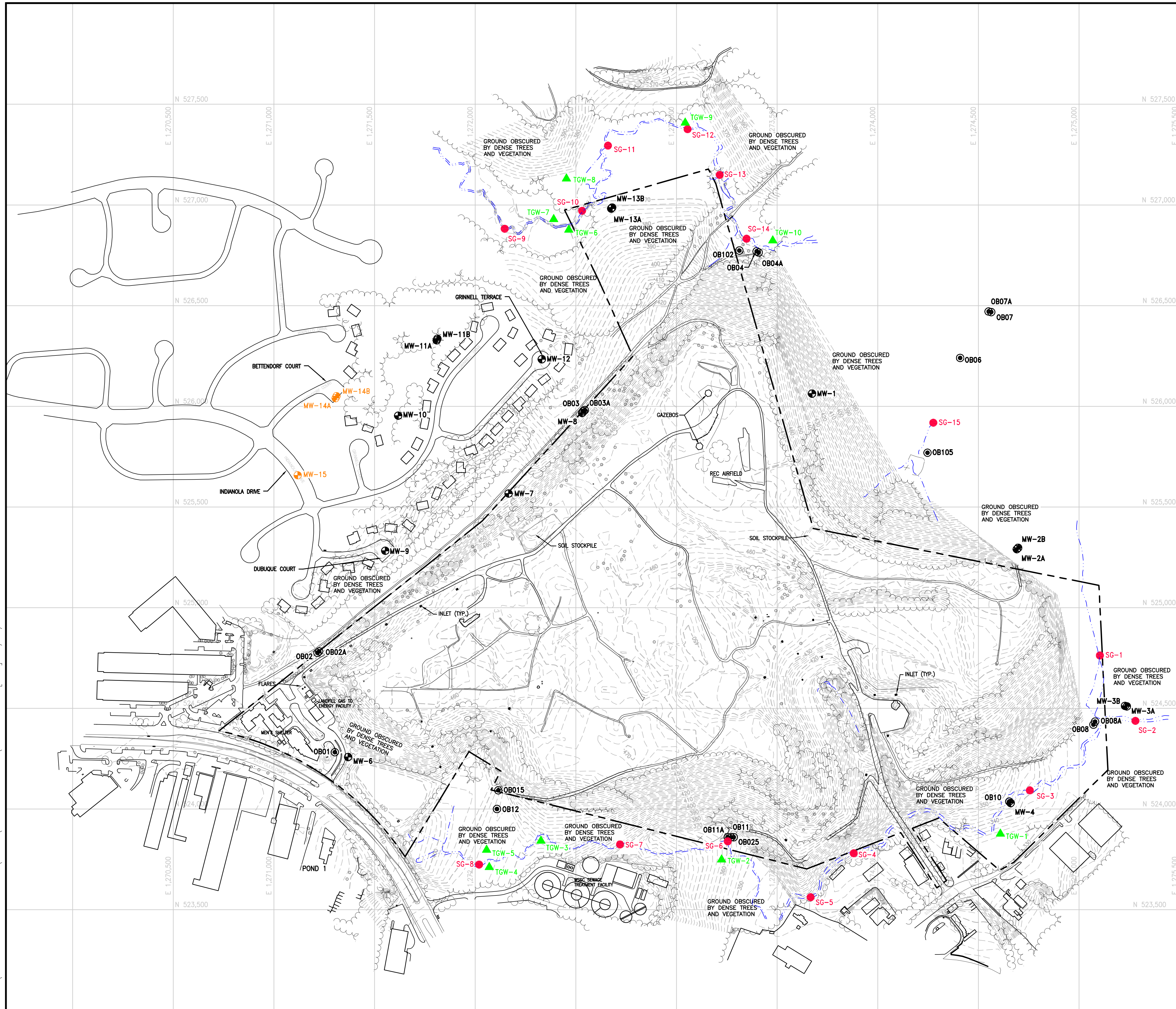


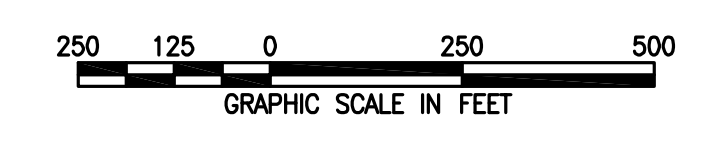
FILE PATH: Q:\PROJECTS\6219608 GUID E PHASE 1\TASK7\AMENDMENT NO.1\FIG 2-1.DWG [2-1] 11/16/11



- NOTES:
1. TOPOGRAPHY COMPILED BY APPLIED MAPPING SOLUTIONS, INC. USING PHOTOGRAMMETRIC METHODS WITH PHOTOGRAPHY DATED 06/24/09 AND SUPPLEMENTED WITH FIELD SURVEY PERFORMED BY C.C. JOHNSON & MALHOTRA, P.C., OCTOBER 2009.
 2. SURVEY OF STREAMS TAKEN FROM 2007 PHOTOGRAMMETRY BY AXIS GEOSPATIAL, LLC.
 3. HORIZONTAL DATUM IS NORTH AMERICAN DATUM OF 1983/91 (NAD-83/91). COORDINATE SYSTEM IS MARYLAND STATE PLANE, U.S. SURVEY FEET. VERTICAL DATUM IS NORTH AMERICAN VERTICAL DATUM OF 1988 (NAVD-88) WITH ELEVATIONS SHOWN IN FEET.
 4. TOPOGRAPHY IS APPROXIMATE IN AREAS NOTED "GROUND OBSCURED BY DENSE TREES AND VEGETATION".
 5. FIELD SURVEY OF MW-14A, MW-14B, & MW-15, TEMPORARY GROUNDWATER MONITORING LOCATIONS, AND STREAM GAUGE LOCATIONS PERFORMED BY C.C. JOHNSON & MALHOTRA, P.C., AUGUST 2011.

LEGEND

- 400 --- 10-FT CONTOUR
- 2 --- 2-FT CONTOUR
- --- PROPERTY BOUNDARY
- --- STREAM
- SG-X STREAM GAUGE LOCATIONS
- ⊙ OBX EXISTING GROUNDWATER MONITORING WELL (INSTALLED PRIOR TO 2010)
- ⊕ MW-X NEW GROUNDWATER MONITORING WELL (INSTALLED IN 2010)
- ⊕ MW-X NEW GROUNDWATER MONITORING WELL (INSTALLED IN 2011)
- ▲ TGW-X TEMPORARY GROUNDWATER MONITORING LOCATION

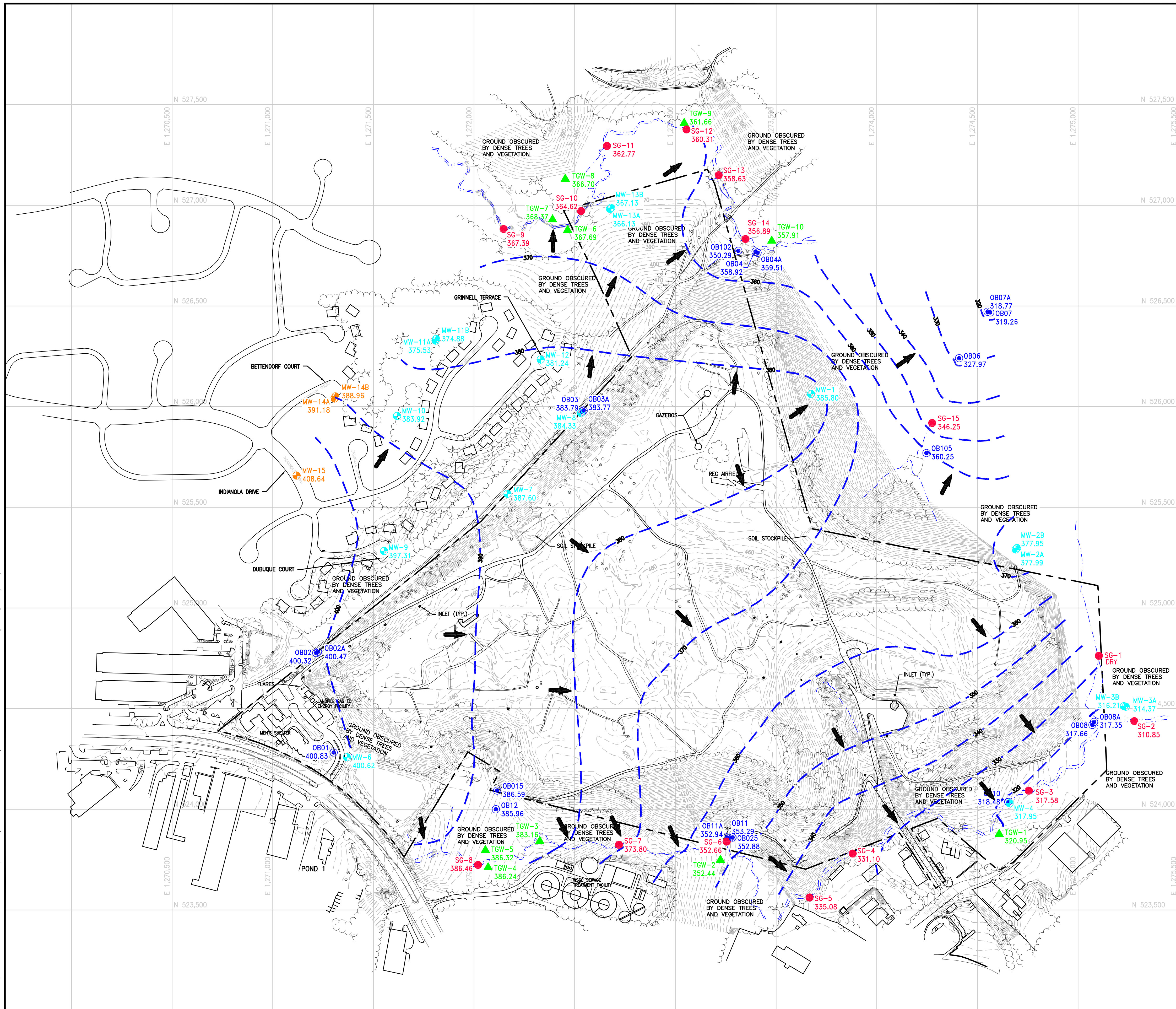


GUDE LANDFILL
NATURE AND EXTENT STUDY
AMENDMENT NO. 1
MONTGOMERY COUNTY, MARYLAND

FIGURE 2-1
ADDITIONAL GROUNDWATER MONITORING WELL AND STREAM
GAUGE SURVEY LOCATIONS

DESIGNED BY PL/LJO	DRAWN BY TJP	DATE NOV. 2011	PROJECT NO. 62196.08
CHECKED BY PC	PROJECT MGR. JK	DRAWING NO. -	FIGURE 2-1

FILE PATH: Q:\PROJECTS\6219608_GUDE_PHASE_1\TASK7\AMENDMENT_NO.1\GWF\FIGURE_CONTOURS.DWG [4-1] 11/16/11



- NOTES:
1. TOPOGRAPHY COMPILED BY APPLIED MAPPING SOLUTIONS, INC. USING PHOTOGRAMMETRIC METHODS WITH PHOTOGRAPHY DATED 06/24/09 AND SUPPLEMENTED WITH FIELD SURVEY PERFORMED BY C.C. JOHNSON & MALHOTRA, P.C., OCTOBER 2009.
 2. SURVEY OF STREAMS TAKEN FROM 2007 PHOTOGRAMMETRY BY AXIS GEOSPATIAL, LLC.
 3. HORIZONTAL DATUM IS NORTH AMERICAN DATUM OF 1983/91 (NAD-83/91). COORDINATE SYSTEM IS MARYLAND STATE PLANE, U.S. SURVEY FEET. VERTICAL DATUM IS NORTH AMERICAN VERTICAL DATUM OF 1988 (NAVD-88) WITH ELEVATIONS SHOWN IN FEET.
 4. TOPOGRAPHY IS APPROXIMATE IN AREAS NOTED "GROUND OBSCURED BY DENSE TREES AND VEGETATION".
 5. FIELD SURVEY OF MW-14A, MW-14B, & MW-15, TEMPORARY GROUNDWATER MONITORING LOCATIONS, AND STREAM GAUGE LOCATIONS PERFORMED BY C.C. JOHNSON & MALHOTRA, P.C., AUGUST 2011.
 6. GROUNDWATER ELEVATION DATA FOR OB102 (350.19') NOT USED IN CONTOURING BECAUSE IT IS INCONSISTENT WITH SURROUNDING DATA.

LEGEND

- 10-FT CONTOUR
- 2-FT CONTOUR
- PROPERTY BOUNDARY
- STREAM
- GROUNDWATER CONTOUR INTERVAL (10 FEET)
- SG-X STREAM GAUGE LOCATIONS
- OBX EXISTING GROUNDWATER MONITORING WELL (INSTALLED PRIOR TO 2010)
- MW-X NEW GROUNDWATER MONITORING WELL (INSTALLED IN 2010)
- MW-X NEW GROUNDWATER MONITORING WELL (INSTALLED IN 2011)
- TGW-X TEMPORARY GROUNDWATER MONITORING LOCATION
- 318.40 GROUNDWATER ELEVATION (FT. MSL)
- INFERRED GROUNDWATER FLOW

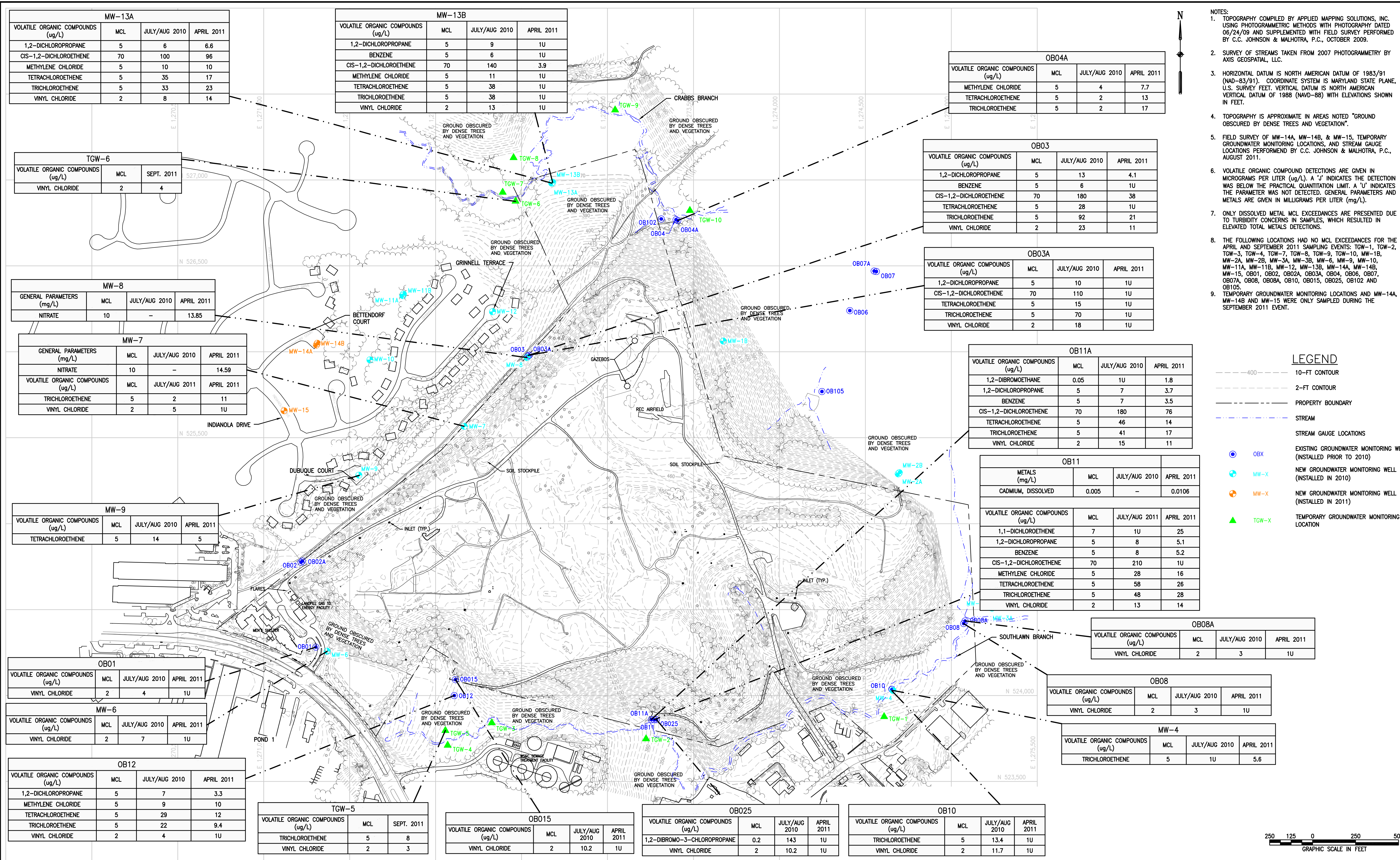


GUDE LANDFILL
NATURE AND EXTENT STUDY
AMENDMENT NO. 1
MONTGOMERY COUNTY, MARYLAND

FIGURE 4-1
INFERRED GROUNDWATER FLOW MAP
DATA DATE: AUGUST 30, 2011

DESIGNED BY PL/LJO	DRAWN BY TJP	DATE NOV. 2011	PROJECT NO. 62196.08
CHECKED BY PC	PROJECT MGR. JK	DRAWING NO. -	FIGURE 4-1

FILE PATH: G:\PROJECTS\6219608 GUIDE PHASE 1\TASK\AMENDMENT NO. 1\TAG FIGURES.DWG [FIGURE 4-2] 11/16/11

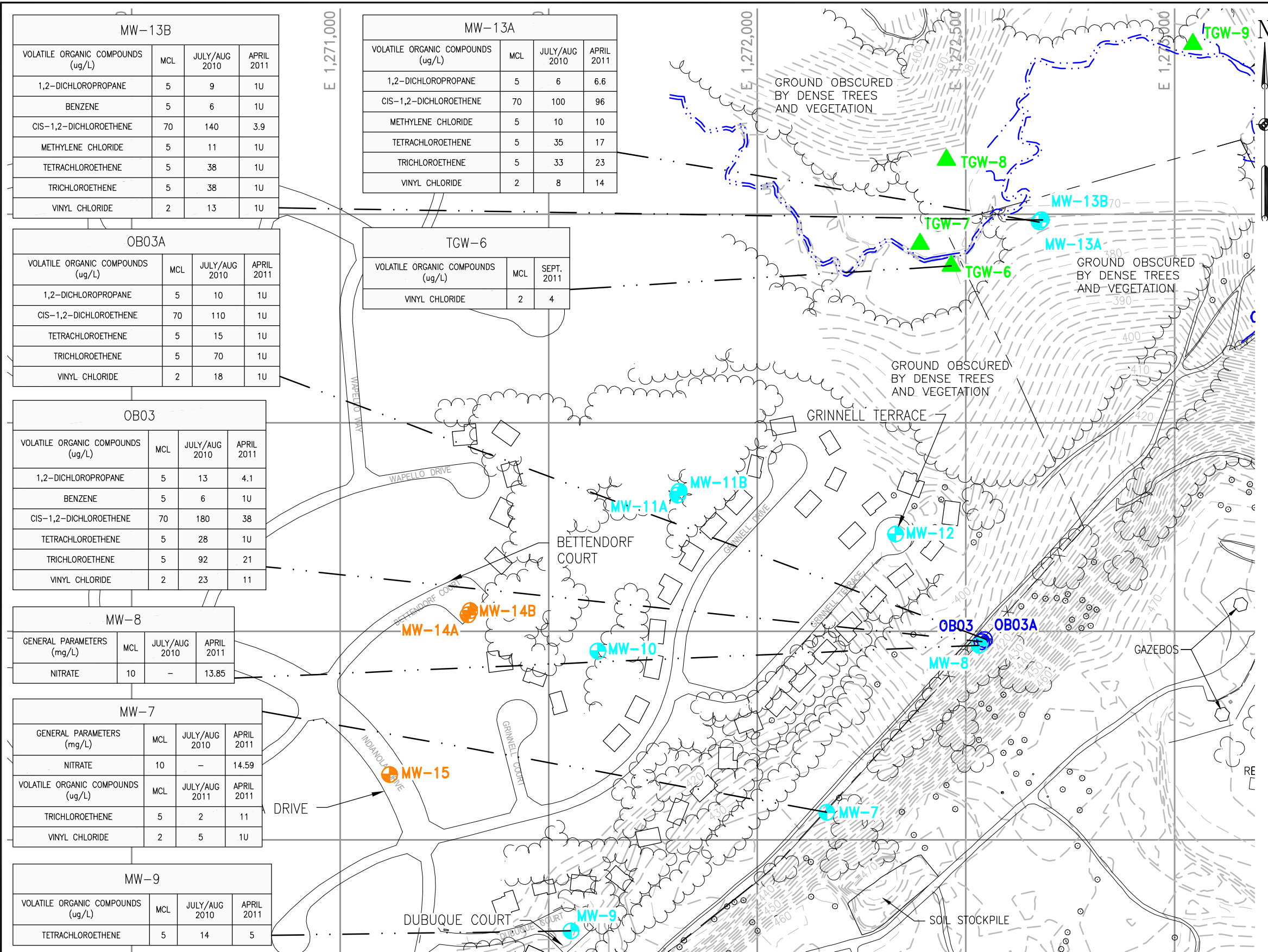


GUDE LANDFILL
NATURE AND EXTENT STUDY
AMENDMENT NO. 1
MONTGOMERY COUNTY, MARYLAND

FIGURE 4-2
MCL EXCEEDANCES MAP

DESIGNED BY PL/LJO	DRAWN BY TJP	DATE NOV. 2011	PROJECT NO. 62196.08
CHECKED BY PC	PROJECT MGR. JK	DRAWING NO. -	FIGURE 4-2

FILE PATH: Q:\PROJECTS\6219608 GUDE PHASE 1\TASK7\AMENDMENT NO.1\TAG FIGURES.DWG [FIGURE 4-3] 11/16/11



MW-13B			
VOLATILE ORGANIC COMPOUNDS (ug/L)	MCL	JULY/AUG 2010	APRIL 2011
1,2-DICHLOROPROPANE	5	9	1U
BENZENE	5	6	1U
CIS-1,2-DICHLOROETHENE	70	140	3.9
METHYLENE CHLORIDE	5	11	1U
TETRACHLOROETHENE	5	38	1U
TRICHLOROETHENE	5	38	1U
VINYL CHLORIDE	2	13	1U

MW-13A			
VOLATILE ORGANIC COMPOUNDS (ug/L)	MCL	JULY/AUG 2010	APRIL 2011
1,2-DICHLOROPROPANE	5	6	6.6
CIS-1,2-DICHLOROETHENE	70	100	96
METHYLENE CHLORIDE	5	10	10
TETRACHLOROETHENE	5	35	17
TRICHLOROETHENE	5	33	23
VINYL CHLORIDE	2	8	14

OB03A			
VOLATILE ORGANIC COMPOUNDS (ug/L)	MCL	JULY/AUG 2010	APRIL 2011
1,2-DICHLOROPROPANE	5	10	1U
CIS-1,2-DICHLOROETHENE	70	110	1U
TETRACHLOROETHENE	5	15	1U
TRICHLOROETHENE	5	70	1U
VINYL CHLORIDE	2	18	1U

TGW-6		
VOLATILE ORGANIC COMPOUNDS (ug/L)	MCL	SEPT. 2011
VINYL CHLORIDE	2	4

OB03			
VOLATILE ORGANIC COMPOUNDS (ug/L)	MCL	JULY/AUG 2010	APRIL 2011
1,2-DICHLOROPROPANE	5	13	4.1
BENZENE	5	6	1U
CIS-1,2-DICHLOROETHENE	70	180	38
TETRACHLOROETHENE	5	28	1U
TRICHLOROETHENE	5	92	21
VINYL CHLORIDE	2	23	11

MW-8			
GENERAL PARAMETERS (mg/L)	MCL	JULY/AUG 2010	APRIL 2011
NITRATE	10	-	13.85

MW-7			
GENERAL PARAMETERS (mg/L)	MCL	JULY/AUG 2010	APRIL 2011
NITRATE	10	-	14.59

VOLATILE ORGANIC COMPOUNDS (ug/L)			
MCL	JULY/AUG 2011	APRIL 2011	
TRICHLOROETHENE	5	2	11
VINYL CHLORIDE	2	5	1U

MW-9			
VOLATILE ORGANIC COMPOUNDS (ug/L)	MCL	JULY/AUG 2010	APRIL 2011
TETRACHLOROETHENE	5	14	5

- NOTES:
- VOLATILE ORGANIC COMPOUND DETECTIONS ARE GIVEN IN MICROGRAMS PER LITER (ug/L). GENERAL PARAMETERS AND METALS ARE GIVEN IN MILLIGRAMS PER LITER (mg/L). A 'U' INDICATES THE PARAMETER WAS NOT DETECTED.
 - ONLY DISSOLVED METAL MCL EXCEEDANCES ARE PRESENTED DUE TO TURBIDITY CONCERNS IN SAMPLES, WHICH RESULTED IN ELEVATED TOTAL METALS DETECTIONS.
 - THE FOLLOWING LOCATIONS HAD NO MCL EXCEEDANCES FOR THE APRIL AND SEPTEMBER 2011 SAMPLING EVENTS: TGW-7, TGW-8, TGW-9, TGW-10, MW-9, MW-10, MW-11A, MW-11B, MW-12, MW-13B, MW-14A, MW-14B, MW-15, OB01 AND OB03A.

LEGEND

- 10-FT CONTOUR
- 2-FT CONTOUR
- PROPERTY BOUNDARY
- STREAM
- OBX EXISTING GROUNDWATER MONITORING WELL (INSTALLED PRIOR TO 2010)
- MW-X NEW GROUNDWATER MONITORING WELL (INSTALLED IN 2010)
- MW-X NEW GROUNDWATER MONITORING WELL (INSTALLED IN 2004)
- TGW-X TEMPORARY GROUNDWATER MONITORING LOCATION

KEY

250 125 0 250
GRAPHIC SCALE IN FEET

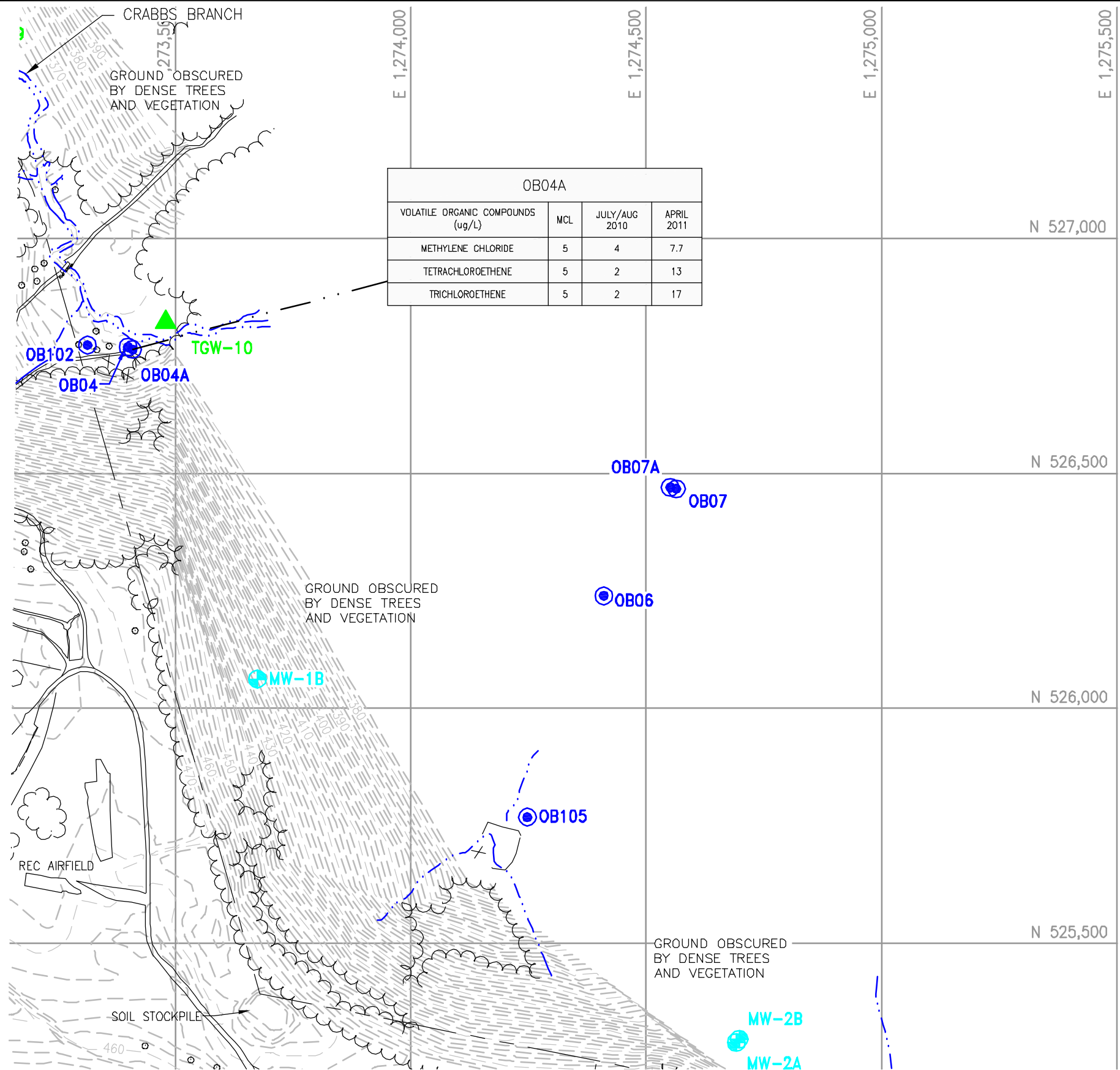


GUDE LANDFILL
NATURE AND EXTENT STUDY
AMENDMENT NO. 1
MONTGOMERY COUNTY, MARYLAND

FIGURE 4-3
NORTHWEST MCL EXCEEDANCES MAP

DESIGNED BY PL/LJO	DRAWN BY TJP	DATE NOV. 2011	PROJECT NO. 62196.08
CHECKED BY PC	PROJECT MGR. JK	DRAWING NO. -	FIGURE 4-3

FILE PATH: Q:\PROJECTS\6219608_GUDE PHASE 1\TASK7\AMENDMENT NO.1\TAG FIGURES.DWG [FIGURE 4-4] 11/16/11

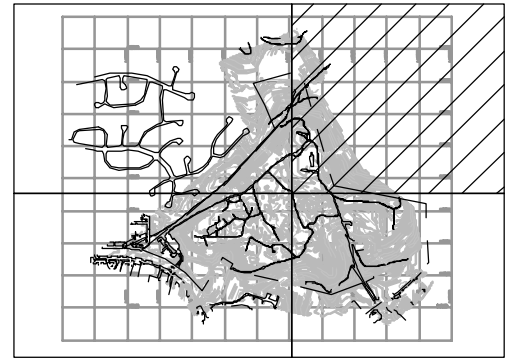


- NOTES:
1. VOLATILE ORGANIC COMPOUND DETECTIONS ARE GIVEN IN MICROGRAMS PER LITER (ug/L). GENERAL PARAMETERS AND METALS ARE GIVEN IN MILLIGRAMS PER LITER (mg/L). A 'U' INDICATES THE PARAMETER WAS NOT DETECTED.
 2. ONLY DISSOLVED METAL MCL EXCEEDANCES ARE PRESENTED DUE TO TURBIDITY CONCERNS IN SAMPLES, WHICH RESULTED IN ELEVATED TOTAL METALS DETECTIONS.
 3. THE FOLLOWING LOCATIONS HAD NO MCL EXCEEDANCES FOR THE APRIL AND SEPTEMBER 2011 SAMPLING EVENTS: TGW-10, MW-1B, MW-2A, MW-2B, OB04, OB06, OB07, OB07A, OB102 AND OB105.

LEGEND

- 10-FT CONTOUR
- 2-FT CONTOUR
- PROPERTY BOUNDARY
- STREAM
- OBX EXISTING GROUNDWATER MONITORING WELL (INSTALLED PRIOR TO 2010)
- MW-X NEW GROUNDWATER MONITORING WELL (INSTALLED IN 2010)
- MW-X NEW GROUNDWATER MONITORING WELL (INSTALLED IN 2004)
- TGW-X TEMPORARY GROUNDWATER MONITORING LOCATION

KEY



GUDE LANDFILL
NATURE AND EXTENT STUDY
AMENDMENT NO. 1
MONTGOMERY COUNTY, MARYLAND

FIGURE 4-4
NORTHEAST MCL EXCEEDANCES MAP

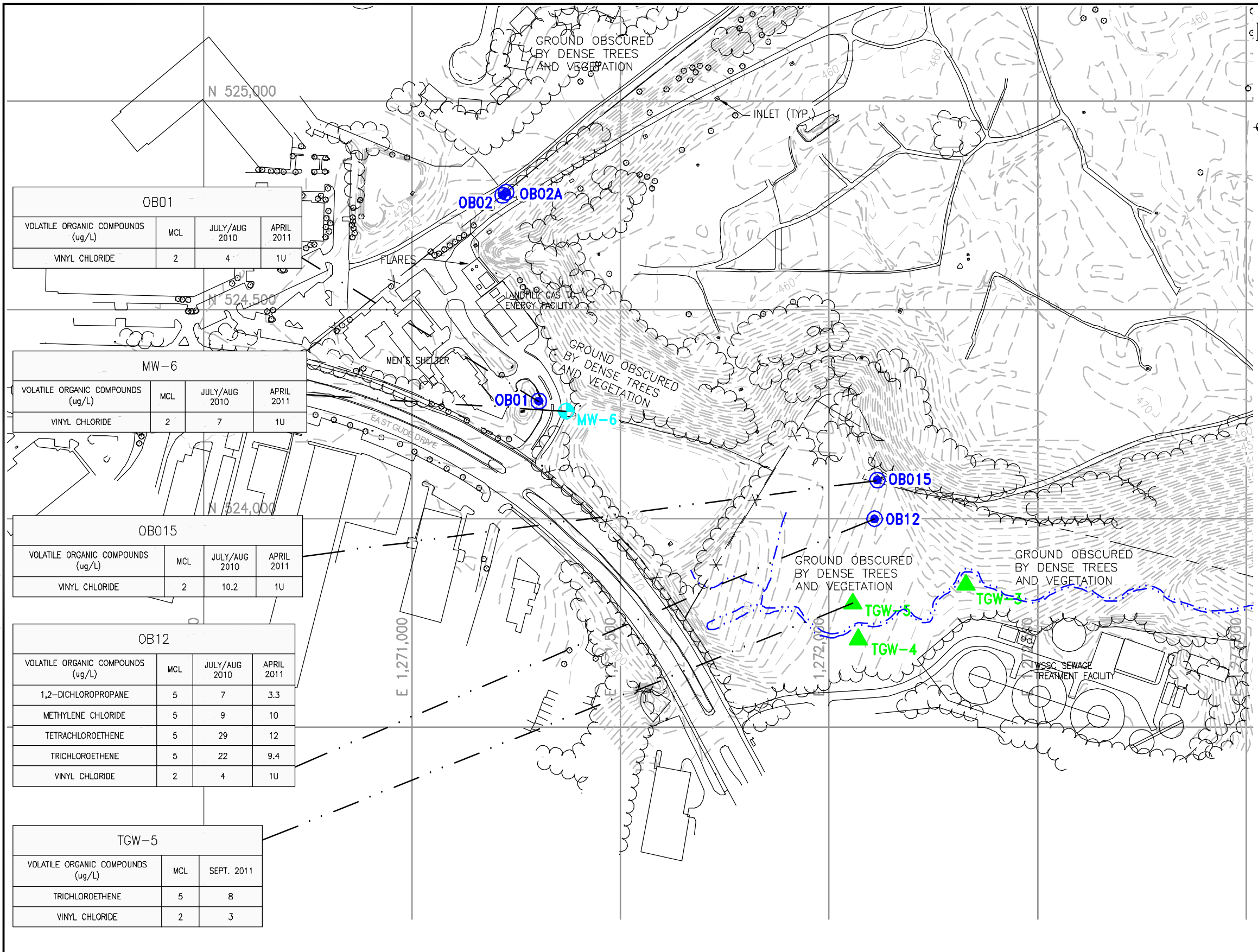
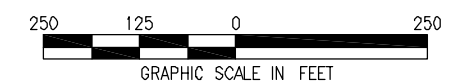
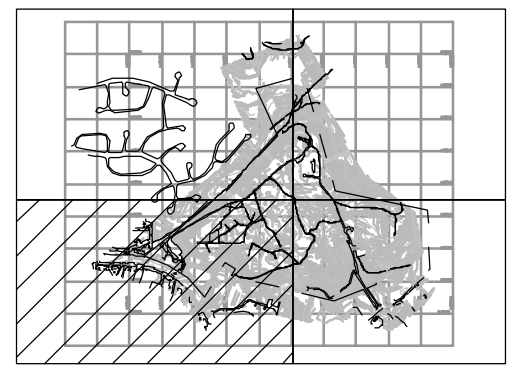
DESIGNED BY PL/LJO	DRAWN BY TJP	DATE NOV. 2011	PROJECT NO. 62196.08
CHECKED BY PC	PROJECT MGR. JK	DRAWING NO. -	FIGURE 4-4

- NOTES:
- VOLATILE ORGANIC COMPOUND DETECTIONS ARE GIVEN IN MICROGRAMS PER LITER (ug/L). GENERAL PARAMETERS AND METALS ARE GIVEN IN MILLIGRAMS PER LITER (mg/L). A 'U' INDICATES THE PARAMETER WAS NOT DETECTED.
 - ONLY DISSOLVED METAL MCL EXCEEDANCES ARE PRESENTED DUE TO TURBIDITY CONCERNS IN SAMPLES, WHICH RESULTED IN ELEVATED TOTAL METALS DETECTIONS.
 - THE FOLLOWING LOCATIONS HAD NO MCL EXCEEDANCES FOR THE APRIL AND SEPTEMBER 2011 SAMPLING EVENTS: TGW-3, TGW-4, MW-6, OB01, OB02, OB02A AND OB015.

LEGEND

- 10-FT CONTOUR
- 2-FT CONTOUR
- PROPERTY BOUNDARY
- STREAM
- OBX EXISTING GROUNDWATER MONITORING WELL (INSTALLED PRIOR TO 2010)
- MW-X NEW GROUNDWATER MONITORING WELL (INSTALLED IN 2010)
- MW-X NEW GROUNDWATER MONITORING WELL (INSTALLED IN 2004)
- TGW-X TEMPORARY GROUNDWATER MONITORING LOCATION

KEY



OB01			
VOLATILE ORGANIC COMPOUNDS (ug/L)	MCL	JULY/AUG 2010	APRIL 2011
VINYL CHLORIDE	2	4	1U

MW-6			
VOLATILE ORGANIC COMPOUNDS (ug/L)	MCL	JULY/AUG 2010	APRIL 2011
VINYL CHLORIDE	2	7	1U

OB015			
VOLATILE ORGANIC COMPOUNDS (ug/L)	MCL	JULY/AUG 2010	APRIL 2011
VINYL CHLORIDE	2	10.2	1U

OB12			
VOLATILE ORGANIC COMPOUNDS (ug/L)	MCL	JULY/AUG 2010	APRIL 2011
1,2-DICHLOROPROPANE	5	7	3.3
METHYLENE CHLORIDE	5	9	10
TETRACHLOROETHENE	5	29	12
TRICHLOROETHENE	5	22	9.4
VINYL CHLORIDE	2	4	1U

TGW-5		
VOLATILE ORGANIC COMPOUNDS (ug/L)	MCL	SEPT. 2011
TRICHLOROETHENE	5	8
VINYL CHLORIDE	2	3

FILE PATH: Q:\PROJECTS\6219608 GUIDANCE PHASE 1\TASK7\AMENDMENT NO.1\TAG FIGURES.DWG [FIGURE 4-6] 11/16/11

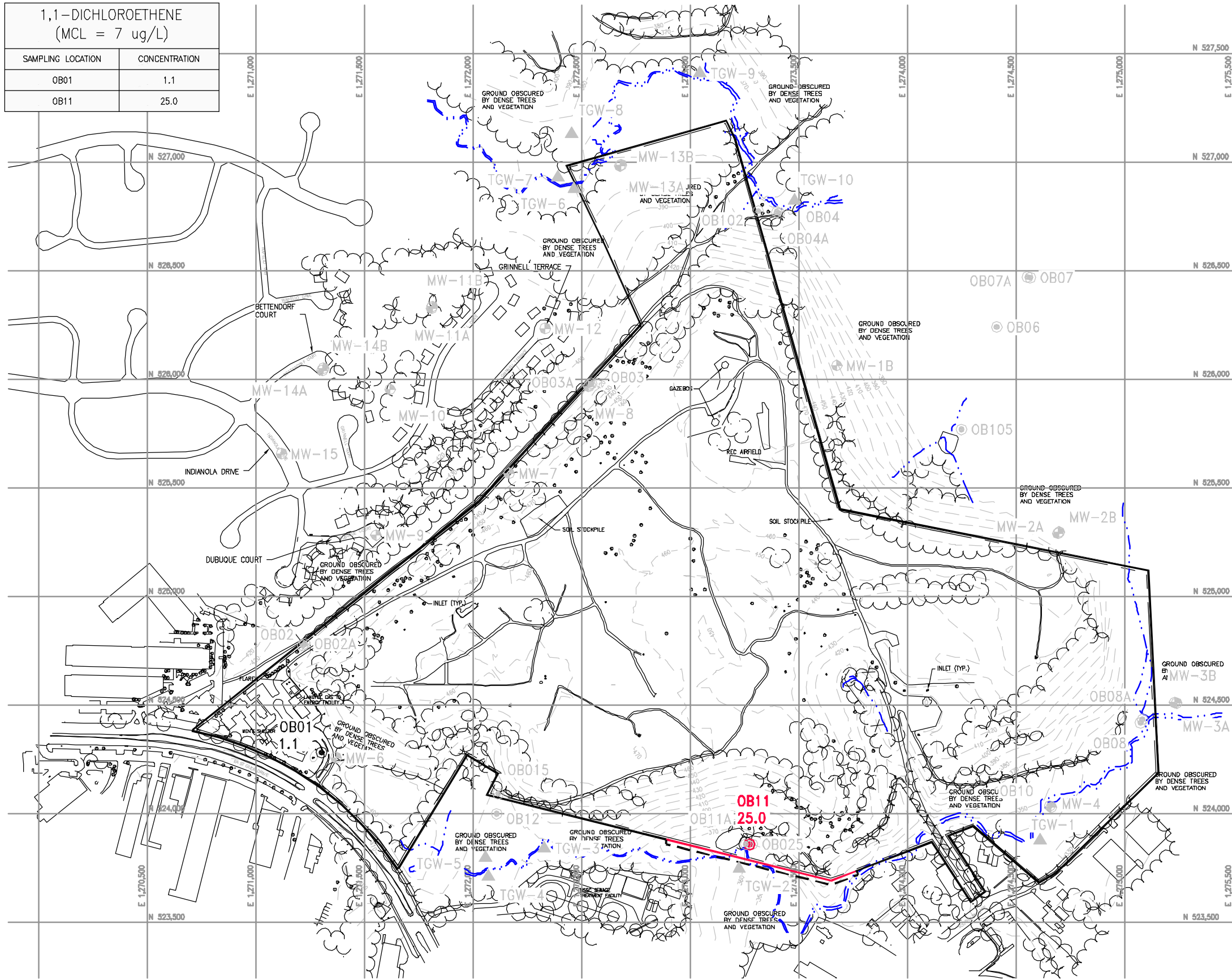


GUIDE LANDFILL
NATURE AND EXTENT STUDY
AMENDMENT NO. 1
MONTGOMERY COUNTY, MARYLAND

FIGURE 4-6
SOUTHWEST MCL EXCEEDANCES MAP

DESIGNED BY PL/LJO	DRAWN BY TJP	DATE NOV. 2011	PROJECT NO. 62196.08
CHECKED BY PC	PROJECT MGR. JK	DRAWING NO. -	FIGURE 4-6

1,1-DICHLOROETHENE (MCL = 7 ug/L)	
SAMPLING LOCATION	CONCENTRATION
OB01	1.1
OB11	25.0



- NOTES:
1. TOPOGRAPHY COMPILED BY APPLIED MAPPING SOLUTIONS, INC. USING PHOTOGRAMMETRIC METHODS WITH PHOTOGRAPHY DATED 06/24/09 AND SUPPLEMENTED WITH FIELD SURVEY PERFORMED BY C.C. JOHNSON & MALHOTRA, P.C., OCTOBER 2009.
 2. HORIZONTAL DATUM IS NORTH AMERICAN DATUM OF 1983/91 (NAD-83/91). COORDINATE SYSTEM IS MARYLAND STATE PLANE, U.S. SURVEY FEET. VERTICAL DATUM IS NORTH AMERICAN VERTICAL DATUM OF 1988 (NAVD-88) WITH ELEVATIONS SHOWN IN FEET.
 3. PARAMETER CONCENTRATIONS ARE REPORTED IN MICROGRAMS PER LITER (ug/L) FROM THE APRIL (COUNTY) AND SEPTEMBER (NES AMENDMENT) 2011 SAMPLING EVENTS. THE MAXIMUM CONTAMINANT LEVEL (MCL) IS 7 ug/L.

LEGEND

- 10-FT CONTOUR
- PROPERTY BOUNDARY
- STREAM
- OBX EXISTING GROUNDWATER MONITORING WELL (INSTALLED PRIOR TO 2010) PARAMETER VALUE IN ug/L
- MW-X NEW GROUNDWATER MONITORING WELL (INSTALLED IN 2010 OR 2011)
- TGW-X TEMPORARY GROUNDWATER MONITORING LOCATION
- OBX SAMPLING LOCATION PARAMETER NOT DETECTED
- OBX SAMPLING LOCATION PARAMETER DETECTED BELOW MCL (PARAMETER CONCENTRATION IN ug/L)
- OBX SAMPLING LOCATION PARAMETER DETECTED AT OR ABOVE MCL (PARAMETER CONCENTRATION IN ug/L)
- COMPLIANCE WITH MCL AT PROPERTY BOUNDARY
- MCL EXCEEDANCE AT PROPERTY BOUNDARY
- INFERRED EXTENT OF POTENTIAL MCL EXCEEDANCE

500 250 0 500
GRAPHIC SCALE IN FEET

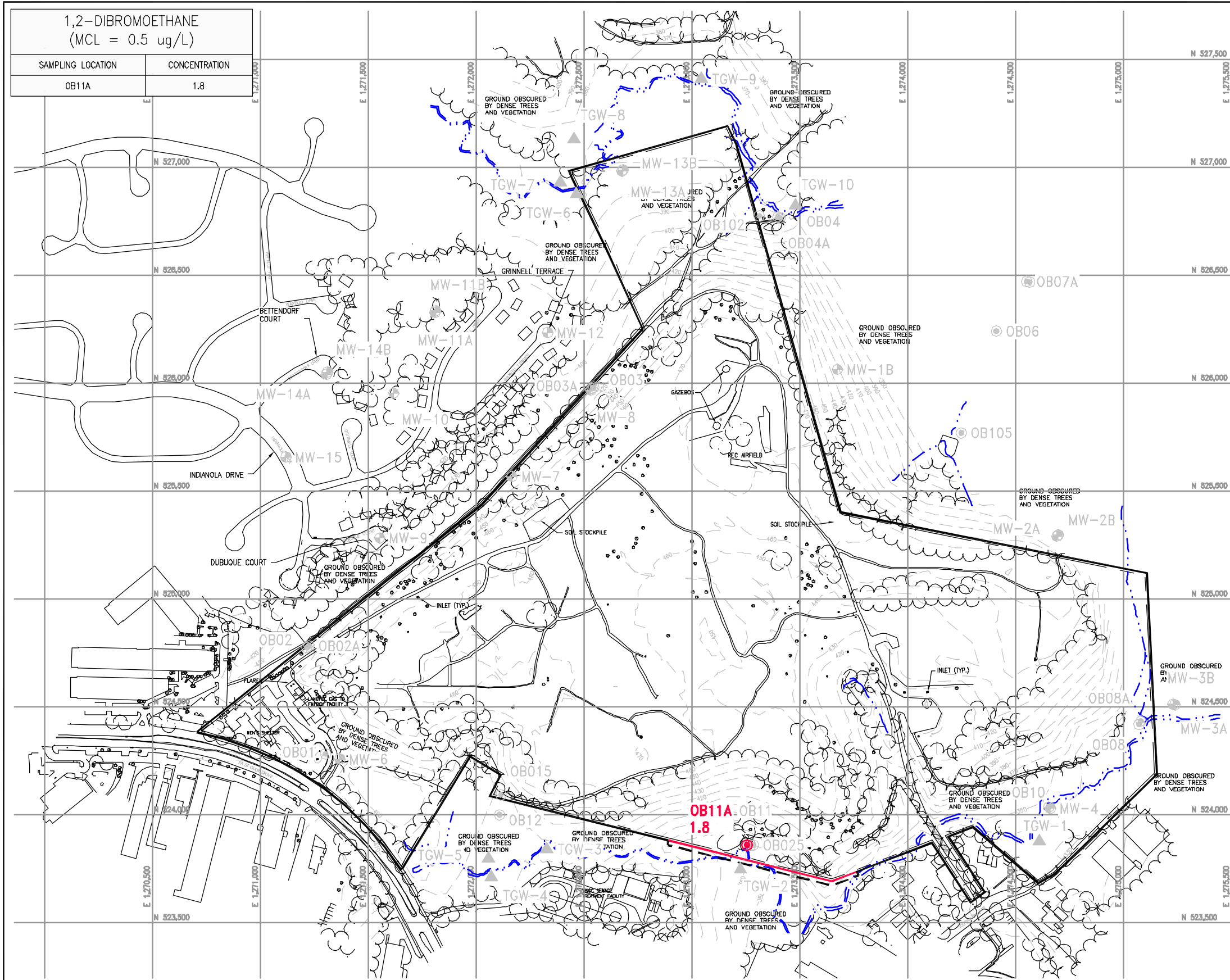
FILE PATH: Q:\PROJECTS\6219608_GUIDE_PHASE_1\TASK\AMENDMENT NO.1\MCL COMPLIANCE EXTENT MAPS.DWG [11 DCE] 11/16/11



GUIDE LANDFILL
NATURE AND EXTENT STUDY
AMENDMENT NO. 1
MONTGOMERY COUNTY, MARYLAND

FIGURE 4-7
MCL COMPLIANCE EXTENT MAP - 1,1-DICHLOROETHENE
APRIL AND SEPTEMBER 2011 SAMPLING EVENTS

DESIGNED BY PL/LJO	DRAWN BY TJP	DATE NOV. 2011	PROJECT NO. 62196.08
CHECKED BY PC	PROJECT MGR. JK	DRAWING NO. -	FIGURE 4-7

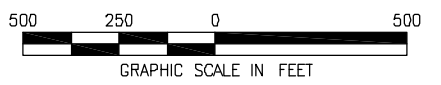


1,2-DIBROMOETHANE (MCL = 0.5 ug/L)	
SAMPLING LOCATION	CONCENTRATION
OB11A	1.8

- NOTES:
- TOPOGRAPHY COMPILED BY APPLIED MAPPING SOLUTIONS, INC. USING PHOTOGRAMMETRIC METHODS WITH PHOTOGRAPHY DATED 06/24/09 AND SUPPLEMENTED WITH FIELD SURVEY PERFORMED BY C.C. JOHNSON & MALHOTRA, P.C., OCTOBER 2009.
 - HORIZONTAL DATUM IS NORTH AMERICAN DATUM OF 1983/91 (NAD-83/91). COORDINATE SYSTEM IS MARYLAND STATE PLANE, U.S. SURVEY FEET. VERTICAL DATUM IS NORTH AMERICAN VERTICAL DATUM OF 1988 (NAVD-88) WITH ELEVATIONS SHOWN IN FEET.
 - PARAMETER CONCENTRATIONS ARE REPORTED IN MICROGRAMS PER LITER (ug/L) FROM THE APRIL (COUNTY) AND SEPTEMBER (NES AMENDMENT) 2011 SAMPLING EVENTS. THE MAXIMUM CONTAMINANT LEVEL (MCL) IS 0.05 ug/L.

LEGEND

- 10-FT CONTOUR
- PROPERTY BOUNDARY
- STREAM
- OBX EXISTING GROUNDWATER MONITORING WELL (INSTALLED PRIOR TO 2010) PARAMETER VALUE IN ug/L
- MW-X NEW GROUNDWATER MONITORING WELL (INSTALLED IN 2010 OR 2011)
- TGW-X TEMPORARY GROUNDWATER MONITORING LOCATION
- OBX SAMPLING LOCATION PARAMETER NOT DETECTED
- OBX SAMPLING LOCATION PARAMETER DETECTED BELOW MCL (PARAMETER CONCENTRATION IN ug/L)
- OBX SAMPLING LOCATION PARAMETER DETECTED AT OR ABOVE MCL (PARAMETER CONCENTRATION IN ug/L)
- COMPLIANCE WITH MCL AT PROPERTY BOUNDARY
- MCL EXCEEDANCE AT PROPERTY BOUNDARY
- INFERRED EXTENT OF POTENTIAL MCL EXCEEDANCE



FILE PATH: Q:\PROJECTS\6219608_GUIDE PHASE 1\TASK\AMENDMENT NO.1\MCL COMPLIANCE EXTENT MAPS.DWG [1,2-DIBROMOETHANE] 11/16/11

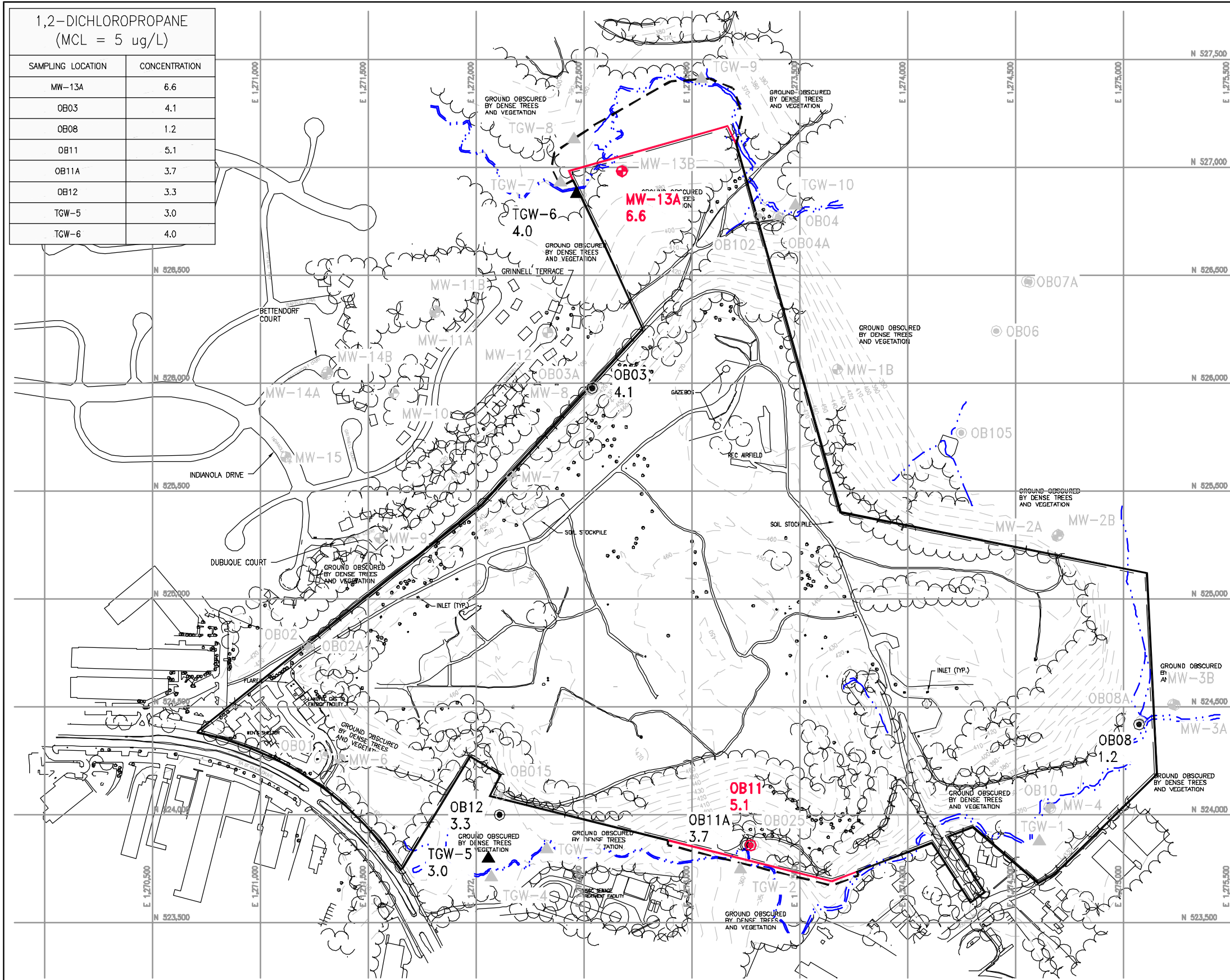


GUIDE LANDFILL
NATURE AND EXTENT STUDY
AMENDMENT NO. 1
MONTGOMERY COUNTY, MARYLAND

FIGURE 4-8
MCL COMPLIANCE EXTENT MAP - 1,2-DIBROMOETHANE
APRIL AND SEPTEMBER 2011 SAMPLING EVENTS

DESIGNED BY PL/LJO	DRAWN BY TJP	DATE NOV. 2011	PROJECT NO. 62196.08
CHECKED BY PC	PROJECT MGR. JK	DRAWING NO. -	FIGURE 4-8

FILE PATH: Q:\PROJECTS\6219608_GUIDE_PHASE_1\TASK\AMENDMENT NO.1\MCL COMPLIANCE_EXTENT MAPS.DWG [12-DICHLOROPROPANE] 11/16/11



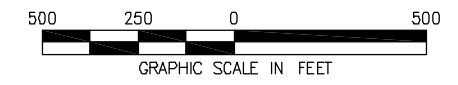
1,2-DICHLOROPROPANE (MCL = 5 ug/L)	
SAMPLING LOCATION	CONCENTRATION
MW-13A	6.6
OB03	4.1
OB08	1.2
OB11	5.1
OB11A	3.7
OB12	3.3
TGW-5	3.0
TGW-6	4.0

- NOTES:
- TOPOGRAPHY COMPILED BY APPLIED MAPPING SOLUTIONS, INC. USING PHOTOGRAMMETRIC METHODS WITH PHOTOGRAPHY DATED 06/24/09 AND SUPPLEMENTED WITH FIELD SURVEY PERFORMED BY C.C. JOHNSON & MALHOTRA, P.C., OCTOBER 2009.
 - HORIZONTAL DATUM IS NORTH AMERICAN DATUM OF 1983/91 (NAD-83/91). COORDINATE SYSTEM IS MARYLAND STATE PLANE, U.S. SURVEY FEET. VERTICAL DATUM IS NORTH AMERICAN VERTICAL DATUM OF 1988 (NAVD-88) WITH ELEVATIONS SHOWN IN FEET.
 - PARAMETER CONCENTRATIONS ARE REPORTED IN MICROGRAMS PER LITER (ug/L) FROM THE APRIL (COUNTY) AND SEPTEMBER (NES AMENDMENT) 2011 SAMPLING EVENTS. THE MAXIMUM CONTAMINANT LEVEL (MCL) IS 5 ug/L.



LEGEND

- 10-FT CONTOUR
- PROPERTY BOUNDARY
- STREAM
- OBX
EXISTING GROUNDWATER MONITORING WELL (INSTALLED PRIOR TO 2010)
PARAMETER VALUE IN ug/L
- MW-X
NEW GROUNDWATER MONITORING WELL (INSTALLED IN 2010 OR 2011)
- TGW-X
TEMPORARY GROUNDWATER MONITORING LOCATION
- OBX
SAMPLING LOCATION
PARAMETER NOT DETECTED
- OBX
SAMPLING LOCATION
PARAMETER DETECTED BELOW MCL (PARAMETER CONCENTRATION IN ug/L)
- OBX
SAMPLING LOCATION
PARAMETER DETECTED AT OR ABOVE MCL (PARAMETER CONCENTRATION IN ug/L)
- COMPLIANCE WITH MCL AT PROPERTY BOUNDARY
- MCL EXCEEDANCE AT PROPERTY BOUNDARY
- INFERRED EXTENT OF POTENTIAL MCL EXCEEDANCE



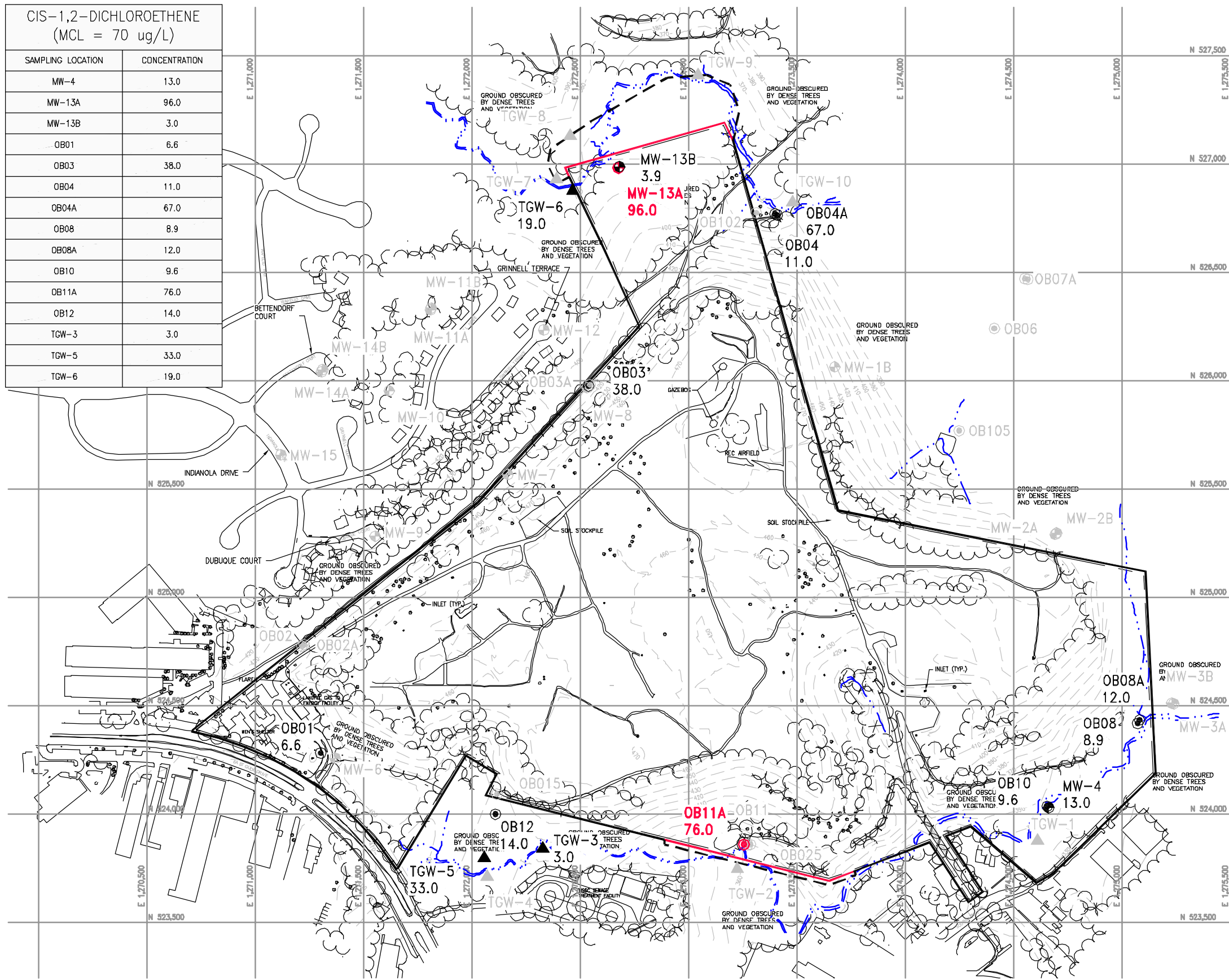
GUIDE LANDFILL
NATURE AND EXTENT STUDY
AMENDMENT NO. 1
MONTGOMERY COUNTY, MARYLAND

FIGURE 4-9
MCL COMPLIANCE EXTENT MAP - 1,2-DICHLOROPROPANE
APRIL AND SEPTEMBER 2011 SAMPLING EVENTS

DESIGNED BY PL/LJO	DRAWN BY TJP	DATE NOV. 2011	PROJECT NO. 62196.08
CHECKED BY PC	PROJECT MGR. JK	DRAWING NO. -	FIGURE 4-9

FILE PATH: Q:\PROJECTS\6219608_GUIDE_PHASE_1\TASK\AMENDMENT NO.1\MCL_COMPLIANCE_EXTENT_MAPS.DWG [CIS-12 DICHLOROETHENE] 11/16/11

CIS-1,2-DICHLOROETHENE (MCL = 70 ug/L)	
SAMPLING LOCATION	CONCENTRATION
MW-4	13.0
MW-13A	96.0
MW-13B	3.9
OB01	6.6
OB03	38.0
OB04	11.0
OB04A	67.0
OB08	8.9
OB08A	12.0
OB10	9.6
OB11A	76.0
OB12	14.0
TGW-3	3.0
TGW-5	33.0
TGW-6	19.0

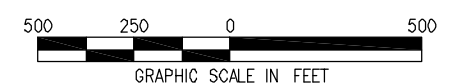


- NOTES:
1. TOPOGRAPHY COMPILED BY APPLIED MAPPING SOLUTIONS, INC. USING PHOTOGRAMMETRIC METHODS WITH PHOTOGRAPHY DATED 06/24/09 AND SUPPLEMENTED WITH FIELD SURVEY PERFORMED BY C.C. JOHNSON & MALHOTRA, P.C., OCTOBER 2009.
 2. HORIZONTAL DATUM IS NORTH AMERICAN DATUM OF 1983/91 (NAD-83/91). COORDINATE SYSTEM IS MARYLAND STATE PLANE, U.S. SURVEY FEET. VERTICAL DATUM IS NORTH AMERICAN VERTICAL DATUM OF 1988 (NAVD-88) WITH ELEVATIONS SHOWN IN FEET.
 3. PARAMETER CONCENTRATIONS ARE REPORTED IN MICROGRAMS PER LITER (ug/L) FROM THE APRIL (COUNTY) AND SEPTEMBER (NES AMENDMENT) 2011 SAMPLING EVENTS. THE MAXIMUM CONTAMINANT LEVEL (MCL) IS 70 ug/L.



LEGEND

- 10-FT CONTOUR
- PROPERTY BOUNDARY
- STREAM
- OBX
EXISTING GROUNDWATER MONITORING WELL (INSTALLED PRIOR TO 2010)
PARAMETER VALUE IN ug/L
- MW-X
NEW GROUNDWATER MONITORING WELL (INSTALLED IN 2010 OR 2011)
- TGW-X
TEMPORARY GROUNDWATER MONITORING LOCATION
- OBX
SAMPLING LOCATION
PARAMETER NOT DETECTED
- OBX
SAMPLING LOCATION
PARAMETER DETECTED BELOW MCL (PARAMETER CONCENTRATION IN ug/L)
- OBX
SAMPLING LOCATION
PARAMETER DETECTED AT OR ABOVE MCL (PARAMETER CONCENTRATION IN ug/L)
- COMPLIANCE WITH MCL AT PROPERTY BOUNDARY
- MCL EXCEEDANCE AT PROPERTY BOUNDARY
- INFERRED EXTENT OF POTENTIAL MCL EXCEEDANCE

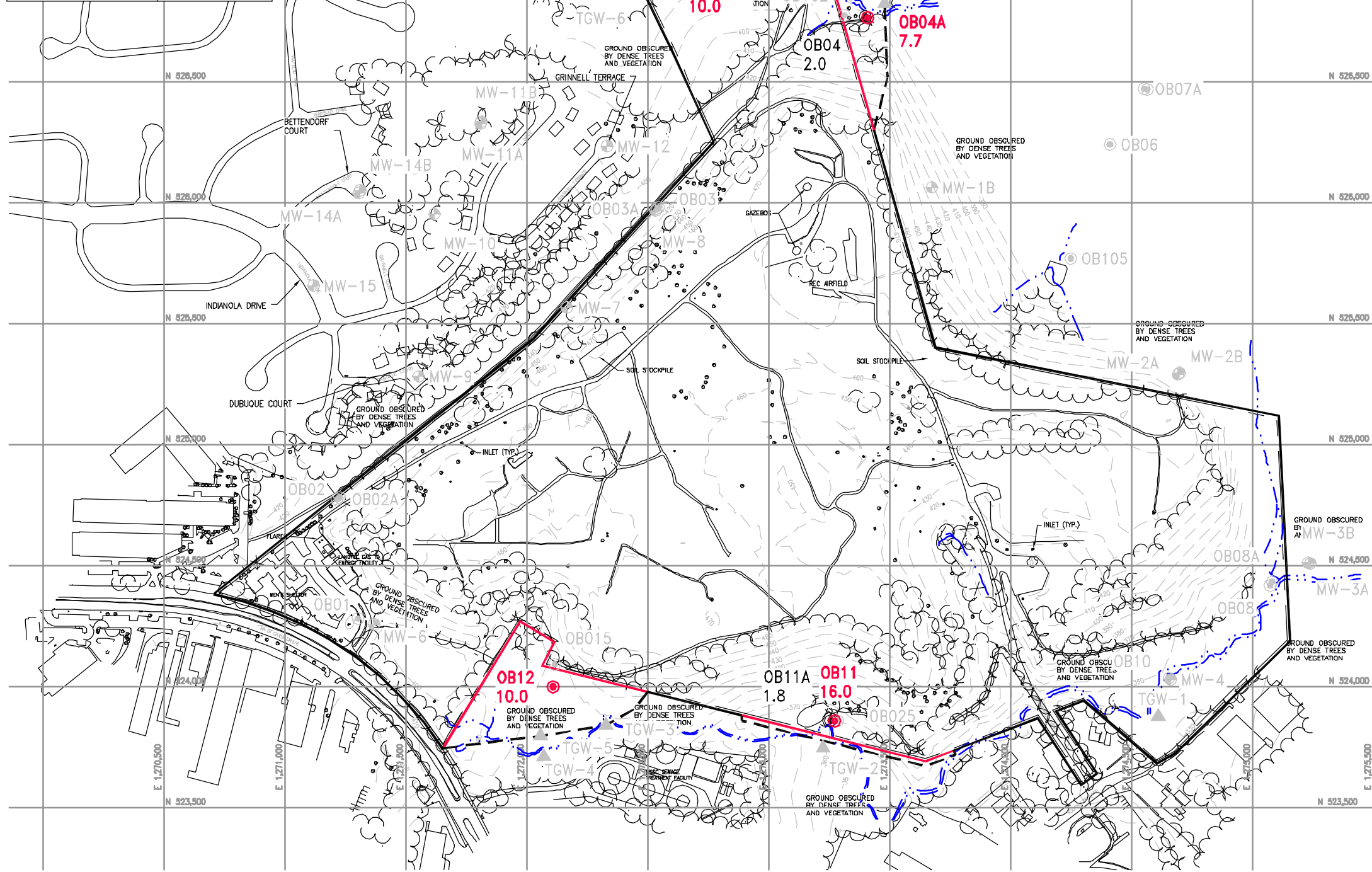


GUIDE LANDFILL
NATURE AND EXTENT STUDY
AMENDMENT NO. 1
MONTGOMERY COUNTY, MARYLAND

FIGURE 4-12
MCL COMPLIANCE EXTENT MAP - CIS-1,2 DICHLOROETHENE
APRIL AND SEPTEMBER 2011 SAMPLING EVENTS

DESIGNED BY PL/LJO	DRAWN BY TJP	DATE NOV. 2011	PROJECT NO. 62196.08
CHECKED BY PC	PROJECT MGR. JK	DRAWING NO. -	FIGURE 4-12

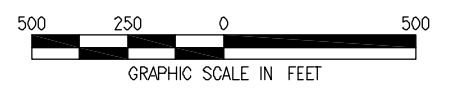
METHYLENE CHLORIDE (MCL = 5 ug/L)	
SAMPLING LOCATION	CONCENTRATION
MW-13A	10.0
OB04	2.0
OB04A	7.7
OB11	16.0
OB11A	1.8
OB12	10.0



- NOTES:
- TOPOGRAPHY COMPILED BY APPLIED MAPPING SOLUTIONS, INC. USING PHOTOGRAMMETRIC METHODS WITH PHOTOGRAPHY DATED 06/24/09 AND SUPPLEMENTED WITH FIELD SURVEY PERFORMED BY C.C. JOHNSON & MALHOTRA, P.C., OCTOBER 2009.
 - HORIZONTAL DATUM IS NORTH AMERICAN DATUM OF 1983/91 (NAD-83/91). COORDINATE SYSTEM IS MARYLAND STATE PLANE, U.S. SURVEY FEET. VERTICAL DATUM IS NORTH AMERICAN VERTICAL DATUM OF 1988 (NAVD-88) WITH ELEVATIONS SHOWN IN FEET.
 - PARAMETER CONCENTRATIONS ARE REPORTED IN MICROGRAMS PER LITER (ug/L) FROM THE APRIL (COUNTY) AND SEPTEMBER (NES AMENDMENT) 2011 SAMPLING EVENTS. THE MAXIMUM CONTAMINANT LEVEL (MCL) IS 5 ug/L.

LEGEND

- 10-FT CONTOUR
- PROPERTY BOUNDARY
- STREAM
- OBX
EXISTING GROUNDWATER MONITORING WELL (INSTALLED PRIOR TO 2010)
PARAMETER VALUE IN ug/L
- MW-X
NEW GROUNDWATER MONITORING WELL (INSTALLED IN 2010 OR 2011)
- TGW-X
TEMPORARY GROUNDWATER MONITORING LOCATION
- OBX
SAMPLING LOCATION
PARAMETER NOT DETECTED
- OBX
SAMPLING LOCATION
PARAMETER DETECTED BELOW MCL (PARAMETER CONCENTRATION IN ug/L)
- OBX
SAMPLING LOCATION
PARAMETER DETECTED AT OR ABOVE MCL (PARAMETER CONCENTRATION IN ug/L)
- COMPLIANCE WITH MCL AT PROPERTY BOUNDARY
- INFERRED EXTENT OF POTENTIAL MCL EXCEEDANCE



FILE PATH: Q:\PROJECTS\6219608_GUIDE_PHASE_1\TASK\AMENDMENT NO.1\MCL COMPLIANCE EXTENT MAPS.DWG [METHYLENE CHLORIDE] 11/16/11



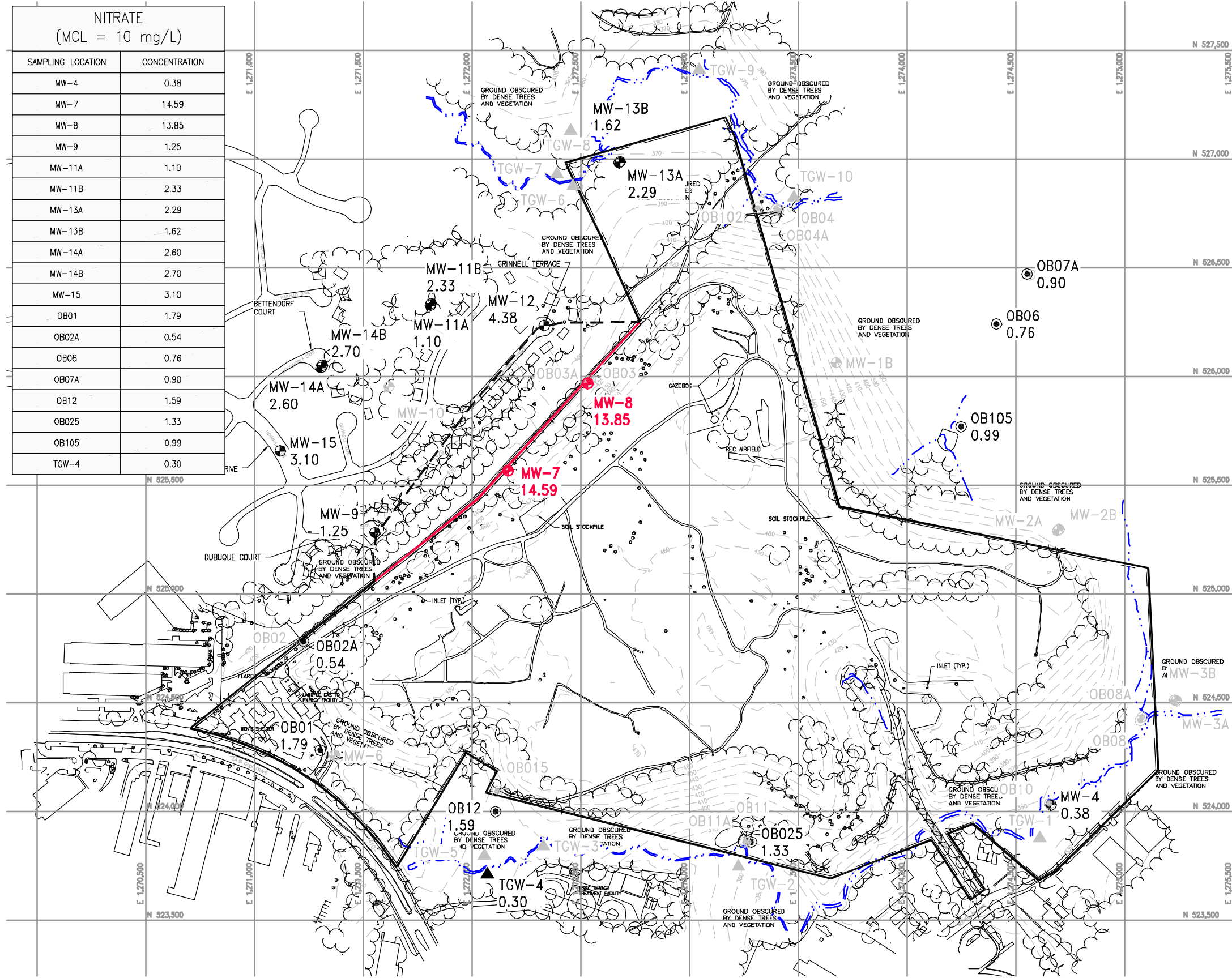
GUDE LANDFILL
NATURE AND EXTENT STUDY
AMENDMENT NO. 1
MONTGOMERY COUNTY, MARYLAND

FIGURE 4-13
MCL COMPLIANCE EXTENT MAP - METHYLENE CHLORIDE
APRIL AND SEPTEMBER 2011 SAMPLING EVENTS

DESIGNED BY PL/LJO	DRAWN BY TJP	DATE NOV. 2011	PROJECT NO. 62196.08
CHECKED BY PC	PROJECT MGR. JK	DRAWING NO. -	FIGURE 4-13

FILE PATH: Q:\PROJECTS\6219608.GUDE PHASE 1\TASK\AMENDMENT NO.1\MCL COMPLIANCE EXTENT MAPS.DWG [NITRATE] 11/16/11

NITRATE (MCL = 10 mg/L)	
SAMPLING LOCATION	CONCENTRATION
MW-4	0.38
MW-7	14.59
MW-8	13.85
MW-9	1.25
MW-11A	1.10
MW-11B	2.33
MW-13A	2.29
MW-13B	1.62
MW-14A	2.60
MW-14B	2.70
MW-15	3.10
OB01	1.79
OB02A	0.54
OB06	0.76
OB07A	0.90
OB12	1.59
OB25	1.33
OB105	0.99
TGW-4	0.30



- NOTES:
1. TOPOGRAPHY COMPILED BY APPLIED MAPPING SOLUTIONS, INC. USING PHOTOGRAMMETRIC METHODS WITH PHOTOGRAPHY DATED 06/24/09 AND SUPPLEMENTED WITH FIELD SURVEY PERFORMED BY C.C. JOHNSON & MALHOTRA, P.C., OCTOBER 2009.
 2. HORIZONTAL DATUM IS NORTH AMERICAN DATUM OF 1983/91 (NAD-83/91). COORDINATE SYSTEM IS MARYLAND STATE PLANE, U.S. SURVEY FEET. VERTICAL DATUM IS NORTH AMERICAN VERTICAL DATUM OF 1988 (NAVD-88) WITH ELEVATIONS SHOWN IN FEET.
 3. PARAMETER CONCENTRATIONS ARE REPORTED IN MILLIGRAMS PER LITER (mg/L) FROM THE APRIL (COUNTY) AND SEPTEMBER (NES AMENDMENT) 2011 SAMPLING EVENTS. THE MAXIMUM CONTAMINANT LEVEL (MCL) IS 10 mg/L.

LEGEND

- 10-FT CONTOUR
- PROPERTY BOUNDARY
- STREAM
- OBX
EXISTING GROUNDWATER MONITORING WELL (INSTALLED PRIOR TO 2010)
PARAMETER VALUE IN ug/L
- MW-X
NEW GROUNDWATER MONITORING WELL (INSTALLED IN 2010 OR 2011)
- TGW-X
TEMPORARY GROUNDWATER MONITORING LOCATION
- OBX
SAMPLING LOCATION
PARAMETER NOT DETECTED
- OBX
SAMPLING LOCATION
PARAMETER DETECTED BELOW MCL (PARAMETER CONCENTRATION IN ug/L)
- OBX
SAMPLING LOCATION
PARAMETER DETECTED AT OR ABOVE MCL (PARAMETER CONCENTRATION IN ug/L)
- COMPLIANCE WITH MCL AT PROPERTY BOUNDARY
- MCL EXCEEDANCE AT PROPERTY BOUNDARY
- INFERRED EXTENT OF POTENTIAL MCL EXCEEDANCE

500 250 0 500
GRAPHIC SCALE IN FEET



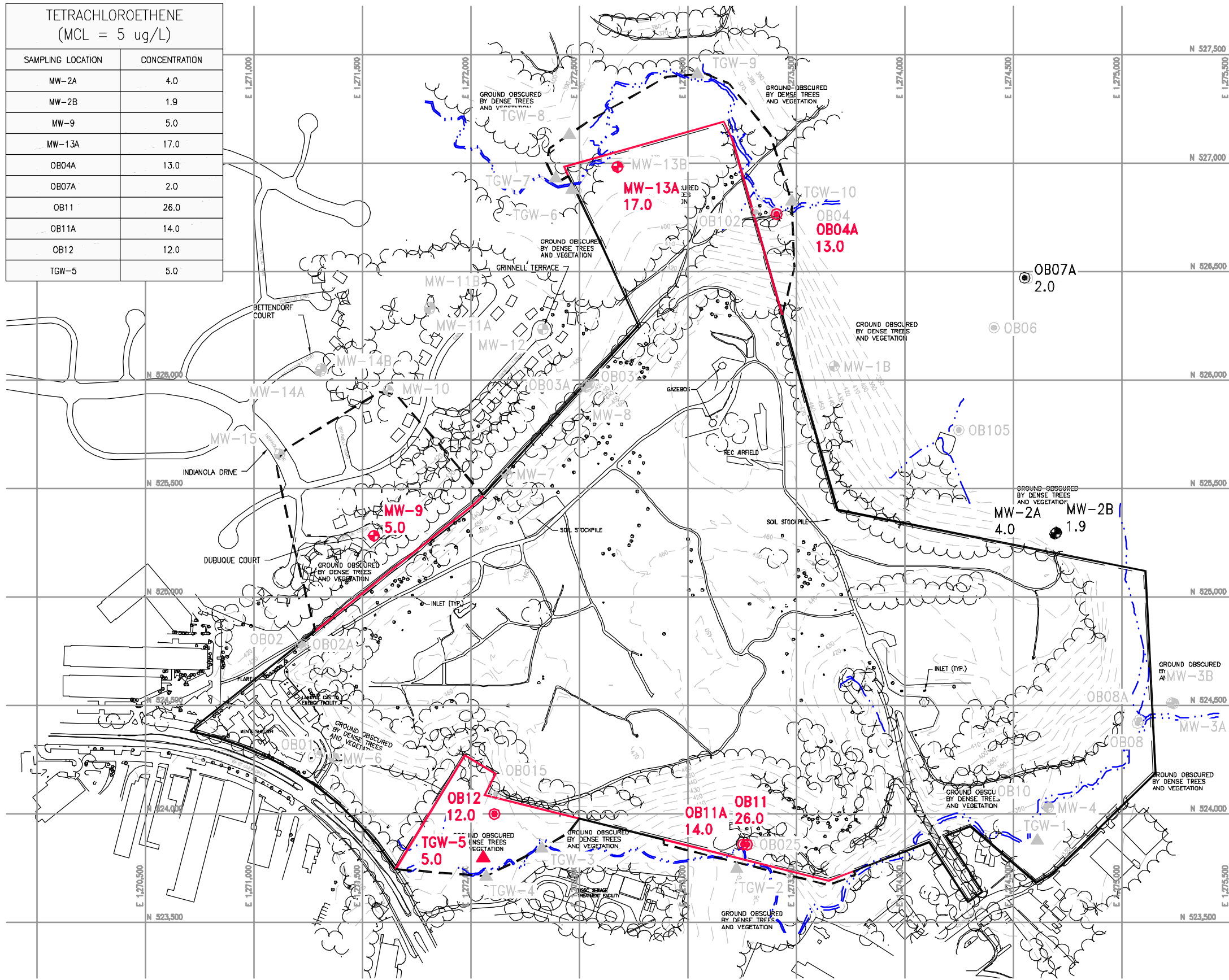
GUDE LANDFILL
NATURE AND EXTENT STUDY
AMENDMENT NO. 1
MONTGOMERY COUNTY, MARYLAND

FIGURE 4-14
MCL COMPLIANCE EXTENT MAP - NITRATE
APRIL AND SEPTEMBER 2011 SAMPLING EVENTS

DESIGNED BY PL/LJO	DRAWN BY TJP	DATE NOV. 2011	PROJECT NO. 62196.08
CHECKED BY PC	PROJECT MGR. JK	DRAWING NO. -	FIGURE 4-14

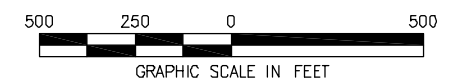
TETRACHLOROETHENE (MCL = 5 ug/L)	
SAMPLING LOCATION	CONCENTRATION
MW-2A	4.0
MW-2B	1.9
MW-9	5.0
MW-13A	17.0
OB04A	13.0
OB07A	2.0
OB11	26.0
OB11A	14.0
OB12	12.0
TGW-5	5.0

- NOTES:
- TOPOGRAPHY COMPILED BY APPLIED MAPPING SOLUTIONS, INC. USING PHOTOGRAMMETRIC METHODS WITH PHOTOGRAPHY DATED 06/24/09 AND SUPPLEMENTED WITH FIELD SURVEY PERFORMED BY C.C. JOHNSON & MALHOTRA, P.C., OCTOBER 2009.
 - HORIZONTAL DATUM IS NORTH AMERICAN DATUM OF 1983/91 (NAD-83/91). COORDINATE SYSTEM IS MARYLAND STATE PLANE, U.S. SURVEY FEET. VERTICAL DATUM IS NORTH AMERICAN VERTICAL DATUM OF 1988 (NAVD-88) WITH ELEVATIONS SHOWN IN FEET.
 - PARAMETER CONCENTRATIONS ARE REPORTED IN MICROGRAMS PER LITER (ug/L) FROM THE APRIL (COUNTY) AND SEPTEMBER (NES AMENDMENT) 2011 SAMPLING EVENTS. THE MAXIMUM CONTAMINANT LEVEL (MCL) IS 5 ug/L.



LEGEND

- 10-FT CONTOUR
- PROPERTY BOUNDARY
- STREAM
- OBX
EXISTING GROUNDWATER MONITORING WELL (INSTALLED PRIOR TO 2010)
PARAMETER VALUE IN ug/L
- MW-X
NEW GROUNDWATER MONITORING WELL (INSTALLED IN 2010 OR 2011)
- TGW-X
TEMPORARY GROUNDWATER MONITORING LOCATION
- OBX
SAMPLING LOCATION
PARAMETER NOT DETECTED
- OBX
SAMPLING LOCATION
PARAMETER DETECTED BELOW MCL (PARAMETER CONCENTRATION IN ug/L)
- OBX
SAMPLING LOCATION
PARAMETER DETECTED AT OR ABOVE MCL (PARAMETER CONCENTRATION IN ug/L)
- COMPLIANCE WITH MCL AT PROPERTY BOUNDARY
- MCL EXCEEDANCE AT PROPERTY BOUNDARY
- INFERRED EXTENT OF POTENTIAL MCL EXCEEDANCE



FILE PATH: Q:\PROJECTS\6219608_GUIDE_PHASE_1\TASK\AMENDMENT NO.1\MCL COMPLIANCE EXTENT MAPS.DWG [PC] 11/16/11

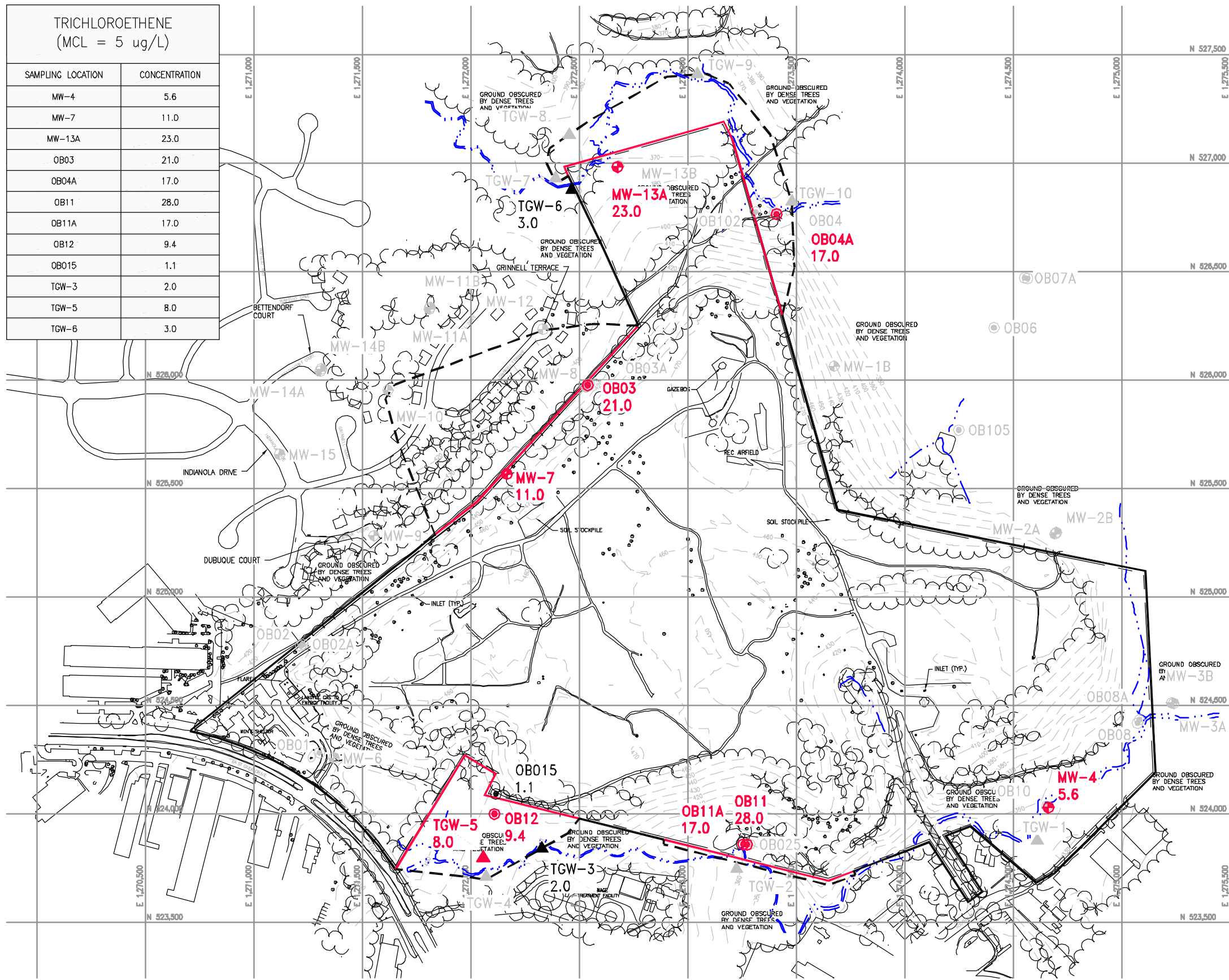


GUIDE LANDFILL
NATURE AND EXTENT STUDY
AMENDMENT NO. 1
MONTGOMERY COUNTY, MARYLAND

FIGURE 4-15
MCL COMPLIANCE EXTENT MAP - TETRACHLOROETHENE
APRIL AND SEPTEMBER 2011 SAMPLING EVENTS

DESIGNED BY PL/LJO	DRAWN BY TJP	DATE NOV. 2011	PROJECT NO. 62196.08
CHECKED BY PC	PROJECT MGR. JK	DRAWING NO. -	FIGURE 4-15

TRICHLOROETHENE (MCL = 5 ug/L)	
SAMPLING LOCATION	CONCENTRATION
MW-4	5.6
MW-7	11.0
MW-13A	23.0
OB03	21.0
OB04A	17.0
OB11	28.0
OB11A	17.0
OB12	9.4
OB015	1.1
TGW-3	2.0
TGW-5	8.0
TGW-6	3.0

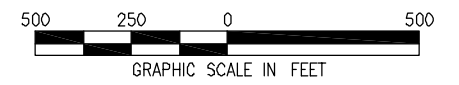


- NOTES:
- TOPOGRAPHY COMPILED BY APPLIED MAPPING SOLUTIONS, INC. USING PHOTOGRAMMETRIC METHODS WITH PHOTOGRAPHY DATED 06/24/09 AND SUPPLEMENTED WITH FIELD SURVEY PERFORMED BY C.C. JOHNSON & MALHOTRA, P.C., OCTOBER 2009.
 - HORIZONTAL DATUM IS NORTH AMERICAN DATUM OF 1983/91 (NAD-83/91). COORDINATE SYSTEM IS MARYLAND STATE PLANE, U.S. SURVEY FEET. VERTICAL DATUM IS NORTH AMERICAN VERTICAL DATUM OF 1988 (NAVD-88) WITH ELEVATIONS SHOWN IN FEET.
 - PARAMETER CONCENTRATIONS ARE REPORTED IN MICROGRAMS PER LITER (ug/L) FROM THE APRIL (COUNTY) AND SEPTEMBER (NES AMENDMENT) 2011 SAMPLING EVENTS. THE MAXIMUM CONTAMINANT LEVEL (MCL) IS 5 ug/L.



LEGEND

- 10-FT CONTOUR
- PROPERTY BOUNDARY
- STREAM
- EXISTING GROUNDWATER MONITORING WELL (INSTALLED PRIOR TO 2010)
PARAMETER VALUE IN ug/L
- NEW GROUNDWATER MONITORING WELL (INSTALLED IN 2010 OR 2011)
- TEMPORARY GROUNDWATER MONITORING LOCATION
- SAMPLING LOCATION
PARAMETER NOT DETECTED
- SAMPLING LOCATION
PARAMETER DETECTED BELOW MCL (PARAMETER CONCENTRATION IN ug/L)
- SAMPLING LOCATION
PARAMETER DETECTED AT OR ABOVE MCL (PARAMETER CONCENTRATION IN ug/L)
- COMPLIANCE WITH MCL AT PROPERTY BOUNDARY
- MCL EXCEEDANCE AT PROPERTY BOUNDARY
- INFERRED EXTENT OF POTENTIAL MCL EXCEEDANCE



FILE PATH: Q:\PROJECTS\6219608_GUIDE_PHASE_1\TASK\AMENDMENT NO.1\MCL COMPLIANCE_EXTENT_MAPS.DWG [TCE] 11/16/11

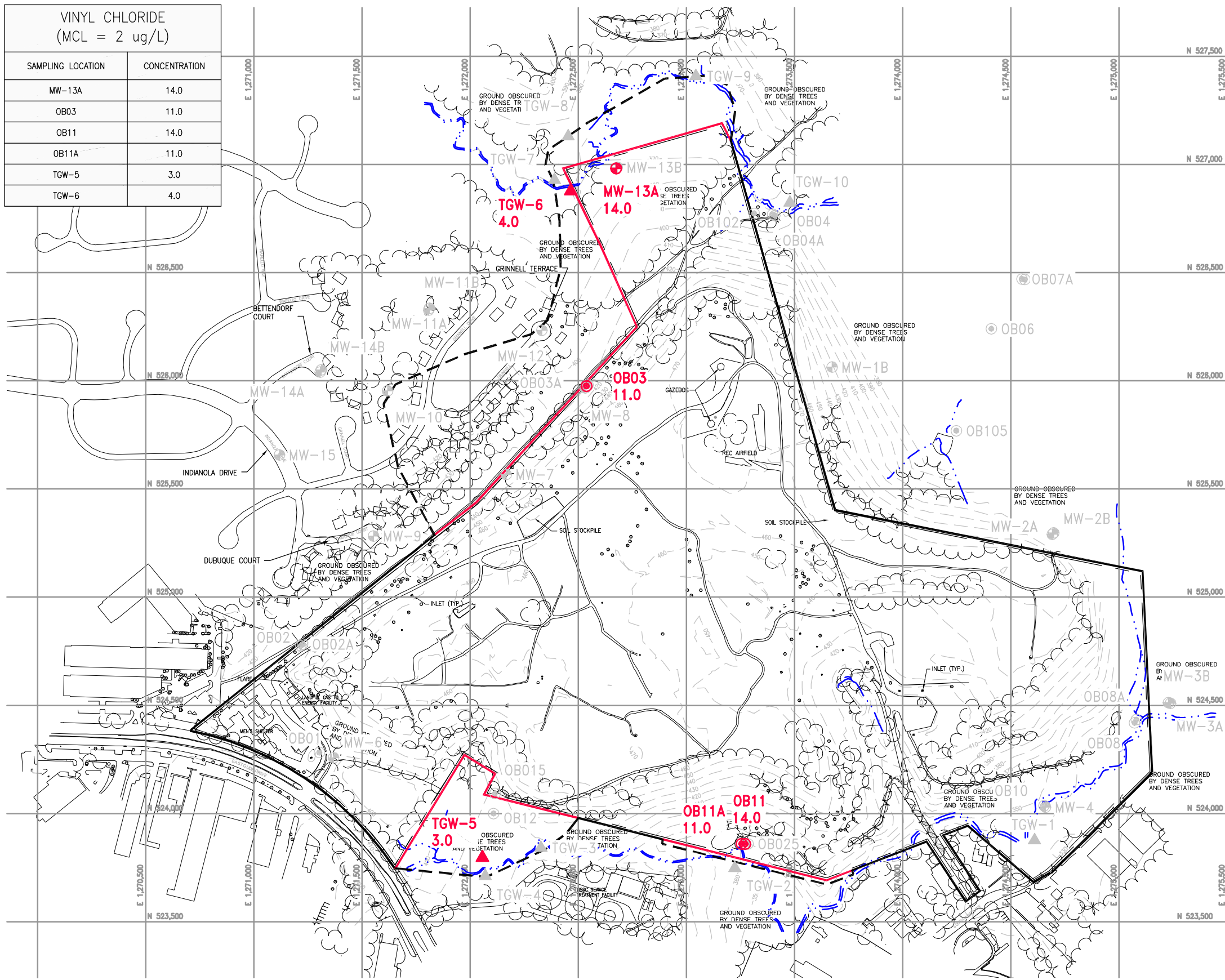


GUDE LANDFILL
NATURE AND EXTENT STUDY
AMENDMENT NO. 1
MONTGOMERY COUNTY, MARYLAND

FIGURE 4-16
MCL COMPLIANCE EXTENT MAP - TRICHLOROETHENE
APRIL AND SEPTEMBER 2011 SAMPLING EVENTS

DESIGNED BY PL/LJO	DRAWN BY TJP	DATE NOV. 2011	PROJECT NO. 62196.08
CHECKED BY PC	PROJECT MGR. JK	DRAWING NO. -	FIGURE 4-16

VINYL CHLORIDE (MCL = 2 ug/L)	
SAMPLING LOCATION	CONCENTRATION
MW-13A	14.0
OB03	11.0
OB11	14.0
OB11A	11.0
TGW-5	3.0
TGW-6	4.0



- NOTES:
- TOPOGRAPHY COMPILED BY APPLIED MAPPING SOLUTIONS, INC. USING PHOTOGRAMMETRIC METHODS WITH PHOTOGRAPHY DATED 06/24/09 AND SUPPLEMENTED WITH FIELD SURVEY PERFORMED BY C.C. JOHNSON & MALHOTRA, P.C., OCTOBER 2009.
 - HORIZONTAL DATUM IS NORTH AMERICAN DATUM OF 1983/91 (NAD-83/91). COORDINATE SYSTEM IS MARYLAND STATE PLANE, U.S. SURVEY FEET. VERTICAL DATUM IS NORTH AMERICAN VERTICAL DATUM OF 1988 (NAVD-88) WITH ELEVATIONS SHOWN IN FEET.
 - PARAMETER CONCENTRATIONS ARE REPORTED IN MICROGRAMS PER LITER (ug/L) FROM THE APRIL (COUNTY) AND SEPTEMBER (NES AMENDMENT) 2011 SAMPLING EVENTS. THE MAXIMUM CONTAMINANT LEVEL (MCL) IS 2 ug/L.

LEGEND

- 10-FT CONTOUR
- PROPERTY BOUNDARY
- STREAM
- EXISTING GROUNDWATER MONITORING WELL (INSTALLED PRIOR TO 2010)
PARAMETER VALUE IN ug/L
- NEW GROUNDWATER MONITORING WELL (INSTALLED IN 2010 OR 2011)
- TEMPORARY GROUNDWATER MONITORING LOCATION
- SAMPLING LOCATION
PARAMETER NOT DETECTED
- SAMPLING LOCATION
PARAMETER DETECTED BELOW MCL (PARAMETER CONCENTRATION IN ug/L)
- SAMPLING LOCATION
PARAMETER DETECTED AT OR ABOVE MCL (PARAMETER CONCENTRATION IN ug/L)
- COMPLIANCE WITH MCL AT PROPERTY BOUNDARY
- MCL EXCEEDANCE AT PROPERTY BOUNDARY
- INFERRED EXTENT OF POTENTIAL MCL EXCEEDANCE

500 250 0 500
GRAPHIC SCALE IN FEET

FILE PATH: Q:\PROJECTS\6219608_GUIDE_PHASE 1\TASK7\AMENDMENT NO.1\MCL COMPLIANCE EXTENT MAPS.DWG [VC] 11/16/11



GUIDE LANDFILL
NATURE AND EXTENT STUDY
AMENDMENT NO. 1
MONTGOMERY COUNTY, MARYLAND

FIGURE 4-17
MCL COMPLIANCE EXTENT MAP - VINYL CHLORIDE
APRIL AND SEPTEMBER 2011 SAMPLING EVENTS

DESIGNED BY PL/LJO	DRAWN BY TJP	DATE NOV. 2011	PROJECT NO. 62196.08
CHECKED BY PC	PROJECT MGR. JK	DRAWING NO. -	FIGURE 4-17