

Gude Landfill Remediation Update

Community Meeting

Date: October 19, 2016



Introductions

- Gude Landfill Concerned Citizens (GLCC)
 - HOA Presidents and Other Interested Residents
- Montgomery County Department of Environmental Protection (DEP)
 - Dan Locke, Chief, DEP, Division of Solid Waste Services (DSWS)
 - Rao Malladi, DSWS Senior Engineer
 - Dan Rogers, DSWS Engineer I



Introductions

- DEP engaged EA Engineering, Science, and Technology, Inc., PBC (EA) as a technical resource
- EA – founded 1973 in Maryland
- Experienced in assessing groundwater contamination, performing risk evaluations, evaluating remediation alternatives at landfills, and landfill capping design and permitting
 - Mark Gutberlet, P.E. – Project Manager



Outline

- Community Engagement
- Landfill Background
- Proposed Corrective Measure
- Land Reuse Process
- Next Steps
- County Contacts and Additional Information
- Questions and Discussions



Community Engagement and Communication

- GLCC/DEP Meetings – 39 meetings since June 2009
- Community Meetings – September 2009, September 2012, April 2016, October 2016
- Derwood Station HOA Newsletters since 2009
- DEP Remediation Webpage since June 2009
- DEP Letters and Fact Sheets



Landfill Background

- Landfill Operated: 1964 to 1982
- Post-Closure Care
Maintenance Activities:
 - DEP monitors groundwater and surface water quality
 - DEP extracts landfill gas and uses it to generate electricity which is sold to the electric grid
 - DEP monitors landfill gas
 - DEP maintains the existing soil cap system



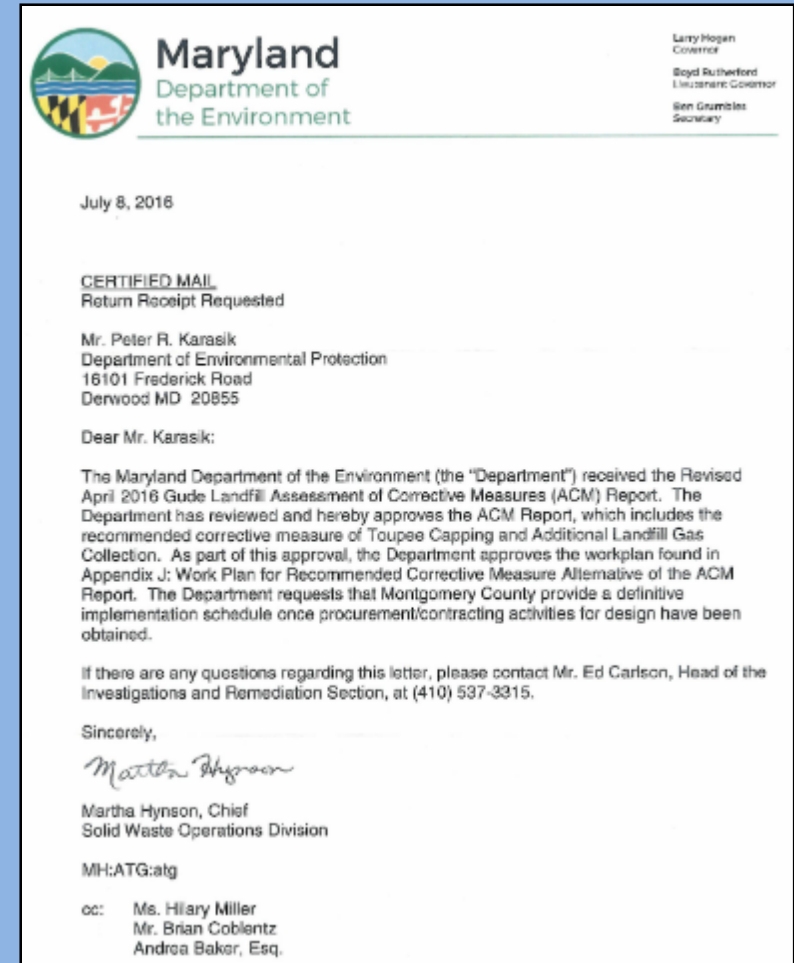
Landfill Background

- Maryland Department of the Environment (MDE) directed DEP to initiate comprehensive site investigations to characterize groundwater contamination in 2008
- The County and MDE entered into a consent order in May 2013 to formalize requirements for the landfill assessment and remediation



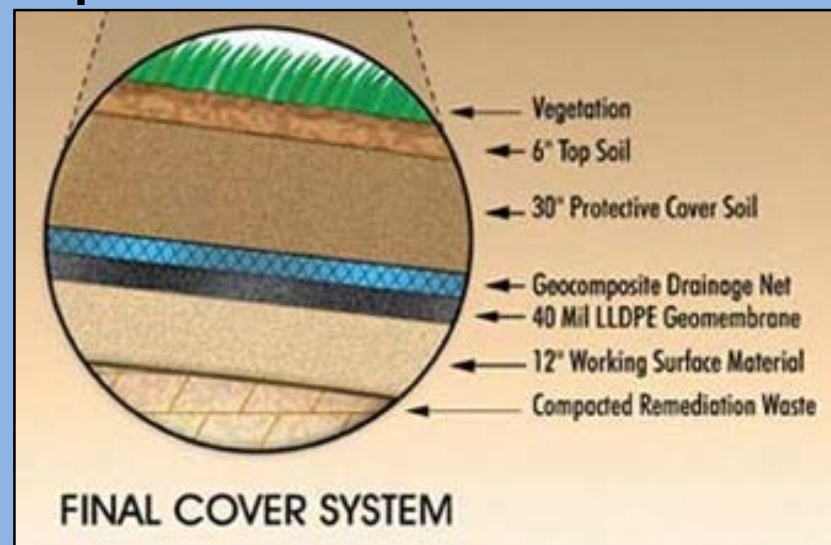
Landfill Background

- DEP submitted the Initial Assessment of Corrective Measures (ACM) Report to MDE in January 2014 and revised ACM in April 2016
- MDE approved the ACM Report in July 2016 and the recommended corrective measure of "Toupee Capping and Additional Landfill Gas Collection"

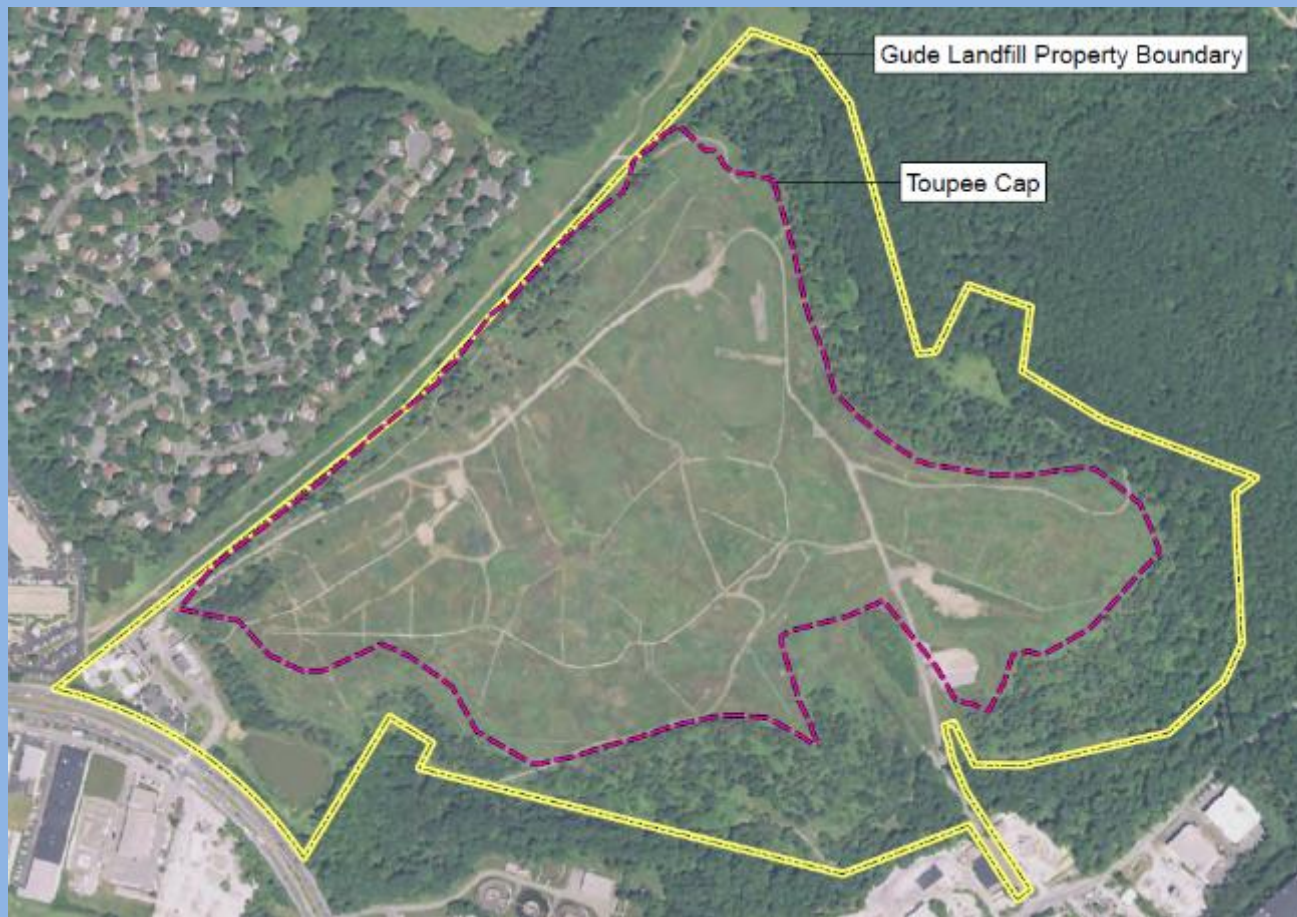


Landfill “Toupee” Capping and Additional Landfill Gas Collection

- Installation of a geomembrane cap over the flatter, grassed area of the landfill to reduce infiltration of rainwater and the potential for groundwater contamination and leachate seeps
- Installation of additional landfill gas extraction wells to reduce landfill gas migration



Landfill “Toupee” Capping and Additional Landfill Gas Collection



D E P A R T M E N T O F
ENVIRONMENTAL PROTECTION
M O N T G O M E R Y C O U N T Y M A R Y L A N D



Potential Community Impacts and Mitigation Strategies

Work will be phased to limit the size of disturbed area and limit overall impacts

Potential Impact	Mitigation Strategies
Noise	<ul style="list-style-type: none"> • Limit work to daylight hours
Dust	<ul style="list-style-type: none"> • Moisten exposed soil
Odor	<ul style="list-style-type: none"> • Minimize amount and duration of exposed waste • Expose waste in winter • Use foam or misters to reduce any odor migration
Truck Traffic	<ul style="list-style-type: none"> • Minimize truck traffic on west side of landfill
Restricted Access to Site	<ul style="list-style-type: none"> • Provide re-use opportunities after construction is complete



Example of Final Landfill Condition



Land Reuse Process

1. County agrees to continue holding regular status meetings with local community representatives at mutually agreeable dates and times. Discussion of land use and reuse will continue during the design and implementation of the corrective measure.
2. Written recommendations from the community should be sent to Lisa Feldt, Director, Department of Environmental Protection, 255 Rockville Pike, Suite 120, Rockville, MD 20850 by January 1, 2017. Any Community recommendations on post-closure use of the property must consider the integrity of the final cover, any other component of the containment system, or the function of the monitoring systems.



Land Reuse Process (cont.)

3. Upon receiving the Community recommendations DEP will forward them to the County Executive.
4. The County Executive will make a recommendation to the County Council concerning land reuse via the annual budget process.
5. The County Council controls funding and will vote on whether to formally approve the final project.
6. During the permitting phase of the project, the land re-use plan will go to the County M-NCPPC Planning Board for review under the Mandatory Referral Process.



Land Reuse Community Preference

- GLCC performed a survey of residents that indicated a preference for passive land reuse activities for the Landfill site, which include:
 - Running and walking trails
 - Bike paths
 - Model plane flying areas
 - Children's play areas
 - Dog park areas
 - Community gardening plots



Anticipated Schedule

- Design and permit capping and potential future land reuse
- Construct landfill cap and land re-use
- Monitor success of corrective measure

Anticipated Implementation Schedule

Project Phase	2016		2017				2018				2019				2020				2021				2031				2041				2051			
	Q3	Q4	Q1	Q2	Q3	Q4	Q1	Q2	Q3	Q4	Q1	Q2	Q3	Q4	Q1	Q2	Q3	Q4	Q1	Q2	Q3	Q4	Q1	Q2	Q3	Q4	Q1	Q2	Q3	Q4	Q1	Q2	Q3	Q4
GLCC Proposal for Landfill Re-use		■																																
Procurement/Contracting Activities for Design	■	■	■																															
Landfill Cap Design and Permitting			■	■	■	■																												
Procurement/Contracting Activities for Construction										■	■																							
Landfill Cap Construction										■	■	■	■	■	■	■	■	■																
Landfill Cap Maintenance*																						■	■	■	■	■	■	■	■	■	■	■	■	■
Evaluations of Cap Effectiveness																							■	■			■	■			■	■		

*Maintenance of the cap will continue in perpetuity

NO SHADING: NO SITE ACTIVITY
ORANGE SHADING: CONSTRUCTION
GREEN SHADING: CONSTRUCTION COMPLETE/FULL OPERATION



Ongoing Community Engagement

- Regular GLCC/DEP Meetings
- DEP will continue to present documents to the community at principal milestones
- DEP will continue to post documents to the remediation webpage

The screenshot shows the website for the Department of Environmental Protection (DEP) in Montgomery County, Maryland. The page is titled "Gude Landfill" and features a navigation menu with links for "Solid Waste Home", "Drop-off Hours & Events", "Holidays", "Recycling, Trash & Yard Trim", "Request...", and "Facilities". A search bar is located in the top right corner. The main content area displays the "OPERATING STATUS" for recycling and trash collection, noting that services are normal on Monday, October 10, 2016, despite it being Columbus Day. Below this, there is a section for "Gude Landfill" with a list of links for various reports and documents, including "Anticipated Remediation schedule", "About Gude / History", "DEP Groundwater and Surface Water Monitoring Data", "DEP's landfill Gas Monitoring Data", "DEP Landfill Gas-to-Energy Plant Emissions Reports", "MDC Inspection Reports", "MDC Approvals, Plans and Consent Order", "Remediation Project Activities", "GLCC/DEP Meeting Minutes", "County Executive Correspondence", "Gude Landfill Presentations", "Questions + Answers", and "Contact the Remediation Project". An aerial photo of the Gude Landfill is also visible on the right side of the page.



County Contacts & Additional Info.

- Rao Malladi
 - Senior Engineer, DSWS Central Operations
 - 240-777-6574; Rao.Malladi@montgomerycountymd.gov
- Gude Landfill Remediation Webpage
 - <http://www.montgomerycountymd.gov/sws/facilities/gude/>
- GLCC/DEP Meetings
 - Open to public and typically held the second Thursday of the month
 - Contact Rao Malladi for schedule

