

GUDE LANDFILL REMEDIATION UPDATE

COMMUNITY MEETING - APRIL 8, 2021

WELCOME!

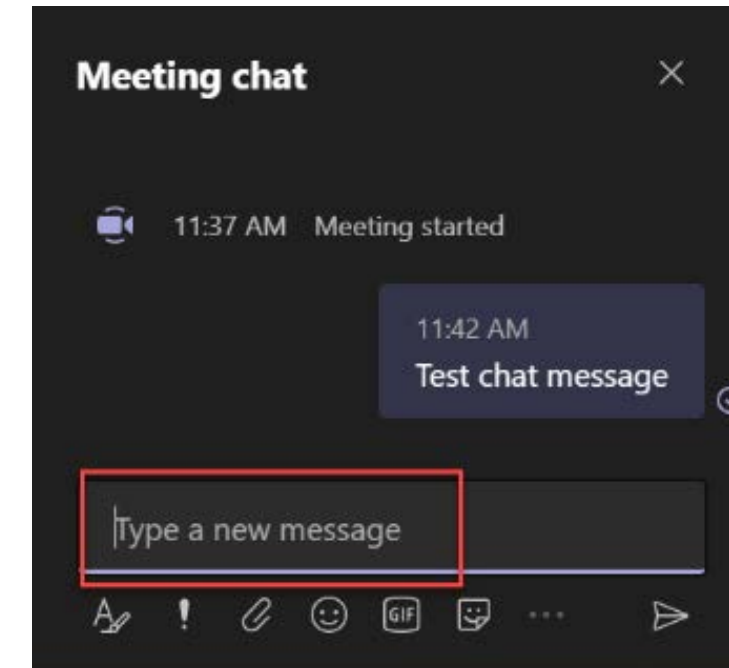
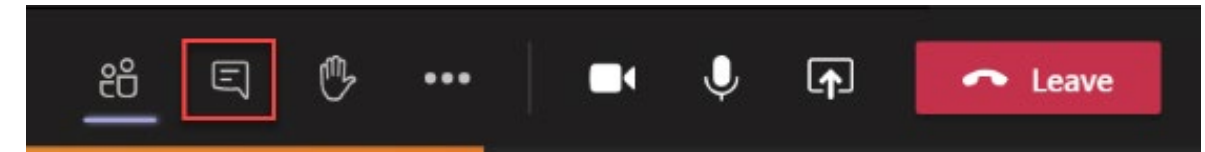
- **Attendees should stay muted and keep video off during the presentation.**
- **If you have a question, please type it in the chat and it will be addressed following the presentation.**
- **The presentation will be recorded and posted to the **Gude Landfill Remediation Web page.****



MEETING EXPECTATIONS

- Attendees should stay muted and keep video off during the presentation.
- If you have a question, please type it in the chat and it will be addressed following the presentation.
- The presentation will be recorded and posted to the **Gude Landfill Remediation Web page**.

CLICK TO OPEN THE CHAT



INTRODUCTIONS

- **Montgomery County Department of Environmental Protection (DEP)**
 - **Jamie Foster, Project Manager – DEP Recycling and Resource Management Division (RRMD)**
- **EA Engineering, Science, and Technology, Inc. (EA)**
 - **Mark Gutberlet, P.E., BCEE – Project Manager**
- **Floura Teeter Landscape Architects (FTLA)**
 - **Megan Maffeo, PLA, LEED AP – Project Manager**



PRESENTATION OUTLINE

- **Community Engagement**
- **Landfill Background**
- **Proposed Corrective Measure**
- **Landfill Remediation**
- **Passive Land Use**
- **Next Steps**
- **County Contacts and Information**



COMMUNITY ENGAGEMENT & COMMUNICATION

- **GLCC/DEP Meetings – 58 meetings since June 2009**
- **Community Meetings – September 2009, September 2012, April 2016, October 2016, April 2021**
- **Derwood Station HOA Newsletters since 2009**
- **DEP Remediation Web page since June 2009**
<http://www.montgomerycountymd.gov/sws/facilities/gude/>
- **DEP Letters and Fact Sheets**



LANDFILL BACKGROUND

- **Landfill Operated: 1964 to 1982.**
- **Maryland Department of the Environment (MDE) directed DEP to initiate comprehensive site investigations to characterize groundwater quality in 2008.**
- **The County and MDE entered into a consent order in May 2013 to formalize requirements for the landfill assessment and remediation.**



LANDFILL CAPPING & ADDITIONAL LANDFILL GAS COLLECTION

- Installation of a geomembrane cap over the flatter, grassed area of the landfill to reduce infiltration of rainwater and the potential for groundwater contamination and leachate seeps.
- Installation of additional landfill gas extraction wells to reduce landfill gas migration.

MEADOW HABITAT +
RECREATIONAL
ENTITIES



VEGETATIVE
SUPPORT SOIL



GEO-SYNTHETICS



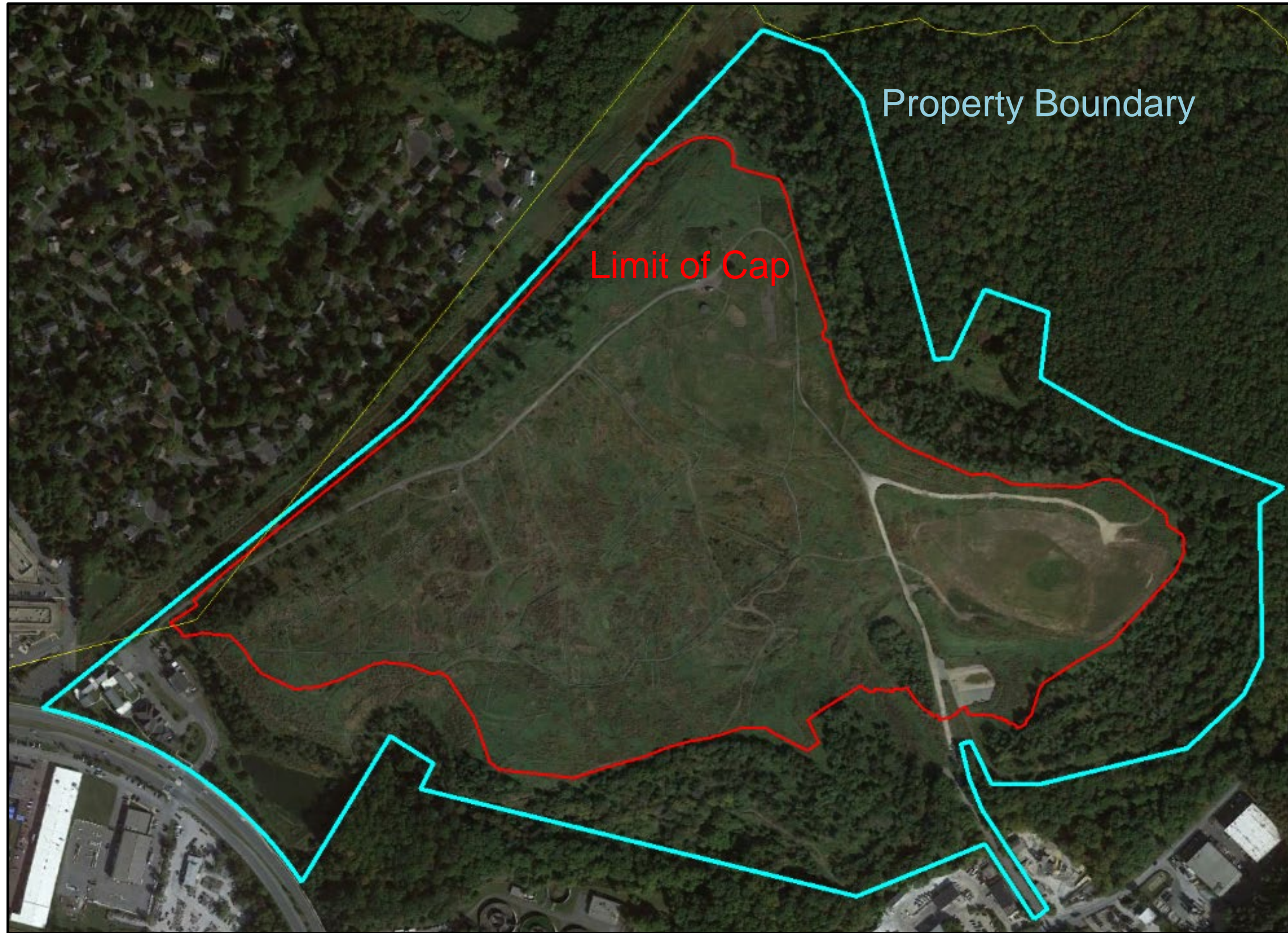
SUB-SOIL CAP



REGRADED EXISTING
WASTE AND COVER
SOIL



LANDFILL CAPPING & ADDITIONAL LANDFILL GAS COLLECTION

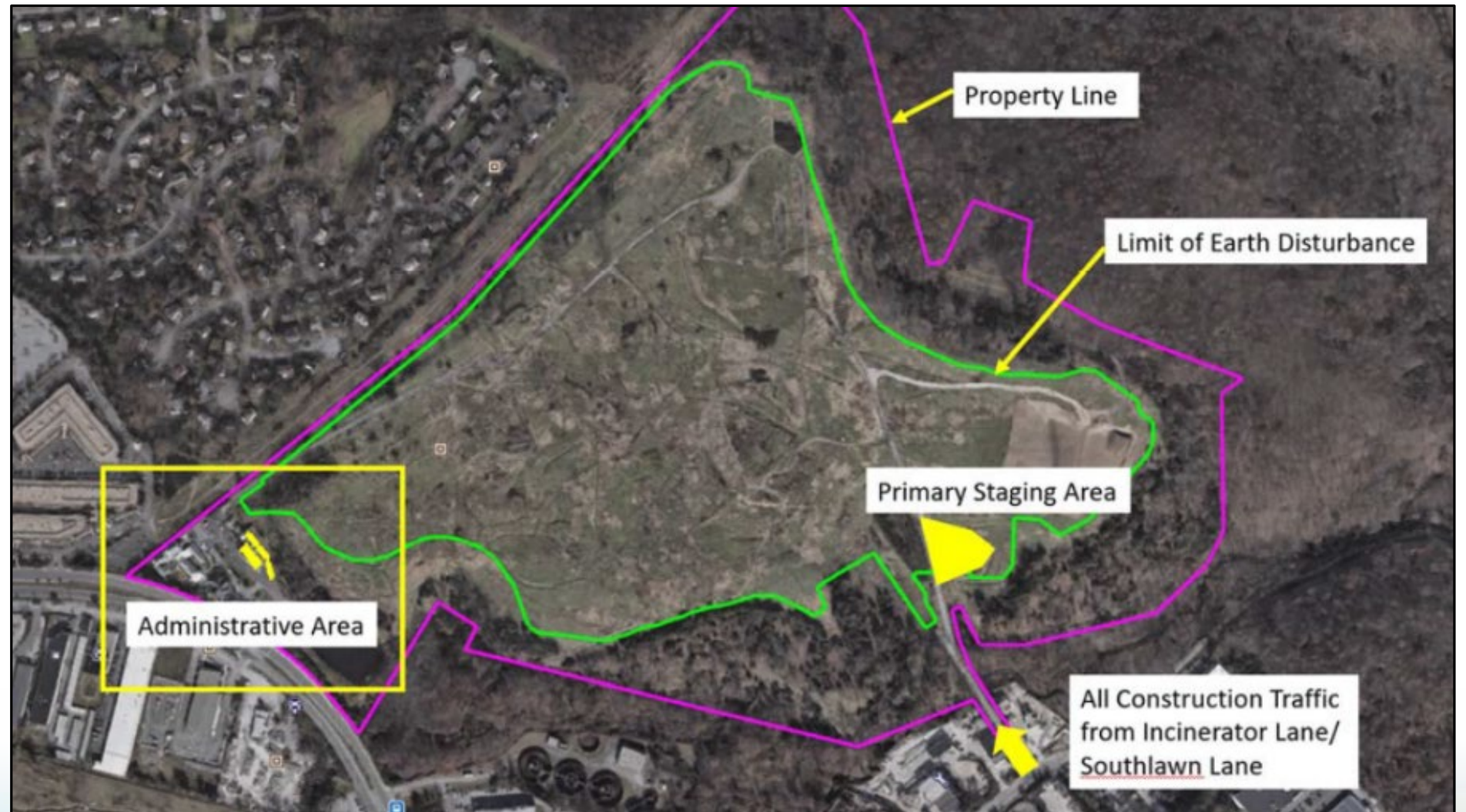


ENVIRONMENTAL EFFECTS - TRAFFIC

LONG-TERM EFFECTS	No noticeable change in traffic after construction.
CONSTRUCTION-PHASE EFFECTS	Traffic in and out of the site will increase during construction.

CONSTRUCTION-PHASE MITIGATION STRATEGIES

- **Heavy construction traffic will be routed to Southlawn Lane site entrance away from residential areas.**



ENVIRONMENTAL EFFECTS - DUST

LONG-TERM EFFECTS	No noticeable change in dust generation after construction.
CONSTRUCTION-PHASE EFFECTS	Dusts will be generated by construction activities.

CONSTRUCTION-PHASE MITIGATION STRATEGIES

- **Heavy construction traffic will be routed to Southlawn Lane site entrance away from residential areas.**
- **Stabilized construction entrances will be installed to minimize dust/dirt tracking at Southlawn Lane and East Gude Drive site entrances.**
- **On-site speed limit will be set.**
- **Access roads will be watered.**
- **Dump trucks will be covered.**



ENVIRONMENTAL EFFECTS - NOISE

LONG-TERM EFFECTS	No noticeable change in noise levels after construction.
CONSTRUCTION-PHASE EFFECTS	Noise will be generated by construction activities.

CONSTRUCTION-PHASE MITIGATION STRATEGIES

- **Vegetative buffer will reduce noise.**
- **Work will be limited to weekday, daylight hours.**
- **Equipment will have mufflers.**
- **Montgomery County Noise Control Law will be followed.**
- **Noise Suppression Plan will be developed.**



ENVIRONMENTAL EFFECTS - ODORS

LONG-TERM EFFECTS	Odor levels may be lower after construction due to closure cap and improved landfill gas collection
CONSTRUCTION-PHASE EFFECTS	Odors will be released during waste excavation.

CONSTRUCTION-PHASE MITIGATION STRATEGIES

- **Area of exposed waste will be limited and covered at the end of each day.**
- **Odor control measures such as foam over the waste or misting to eliminate odor will be employed if needed.**



ENVIRONMENTAL EFFECTS - SITE ACCESS, SAFETY, & SECURITY

LONG-TERM EFFECTS	Site access will be improved by new public entrances and walking paths after construction.
CONSTRUCTION-PHASE EFFECTS	Site access will be restricted during construction for safety reasons.

CONSTRUCTION-PHASE MITIGATION STRATEGIES

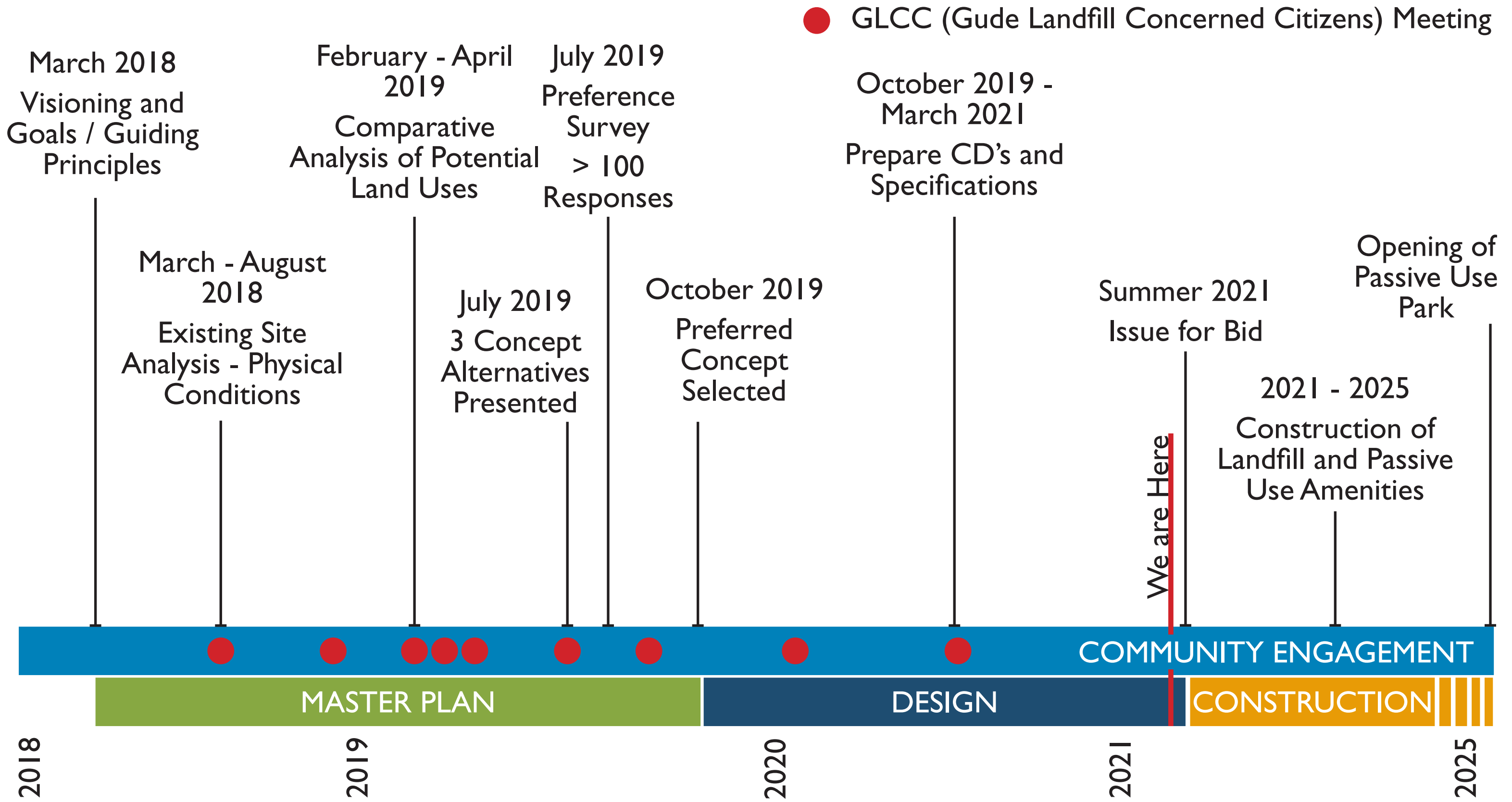
- **Site-Specific Health and Safety Plan** will be developed to protect construction workers.
- **Construction fencing and clear signage** will be implemented to limit access to the site.
- **Closed-circuit television surveillance system** will be installed and monitored by the **County**.



COMPLETE PHASE F-I AND F-II FIRST



MASTER PLANNING TIMELINE



VISION AND GOALS

VISION:

Create a park-like environment with destination trails and limited amenities to allow access to the restored landscape of the landfill.

GOALS

- Maintain integrity of the landfill and allow for continued monitoring during post closure period.
- Accommodate uses to support function of Montgomery County Recycling and Resource Management Division.
- Include recreation uses compatible with the landfill.
- Explore the feasibility for connections to adjacent parks/paths.
- Establish a naturalistic meadow environment and encourage the interaction of native bird species with the new flora.
- Include signage or art to celebrate the new ecology.
- Create an environment that is safe for users.
- Maintain or enhance drainage swales and other features required for landfill reclamation.





POTENTIAL LAND USE ACTIVITIES

COMPARATIVE ANALYSIS EVALUATION CRITERIA

- Impact to Landfill Remediation
- Level of Maintenance
- Magnitude of Cost
- Noise Level Concerns
- Adjacency Concerns / Separation Requirements

HIGH SUITABILITY

- Natural Meadow Vegetation & Habitat
- Walking - Trail System
- Dog Walking - On Leash
- Birdwatching
- Kite Flying
- Art /Sculpture
- Children's Nature Play

MEDIUM SUITABILITY

- Solar Array
- Dog Play - Off Leash
- Disc Golf
- Children's Playground



DESTINATIONS



ACCESS POINT



DOG PLAY



HIGH POINT OVERLOOK



DISC GOLF



CHILDREN'S PLAY



ART INSTALLATION

TRAILS



DERWOOD TRAIL



BIRDWATCHER'S WAY



POLLINATOR LOOP



VISTA TRAIL



RAPTOR WAY



SHORTCUT TRAIL



SERVICE ROAD (NO ACCESS)



REGIONAL NETWORK



RECREATION TRAIL NETWORK

GRAVEL PUBLIC ACCESS



- **Multi-functional, serves both recreation access and landfill gas extraction well access.**

GRASS PUBLIC ACCESS



- **Serves recreation access.**

DESTINATION - HIGH POINT LOOKOUT



- **Highest elevation on-site**
- **View of Rockville Skyline**
- **1/2 mile from Entry #1**
- **Less than 1/4 mile from Entry #2**
- **Maintained Lawn /Short Meadow**

- **Potential Uses:**
 - Kite-flying**
 - Seating /Rest in Nature**
 - Birdwatching**
 - Walking**

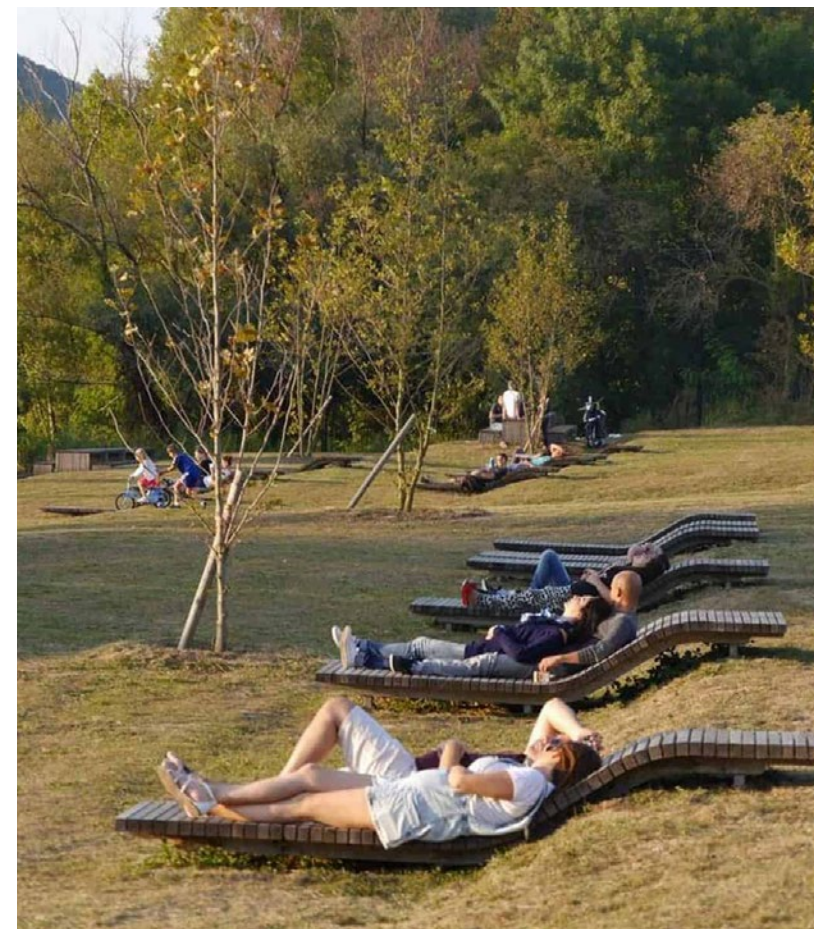
PLAN



KITE-FLYING



SEATING / REST IN NATURE



BIRDWATCHING

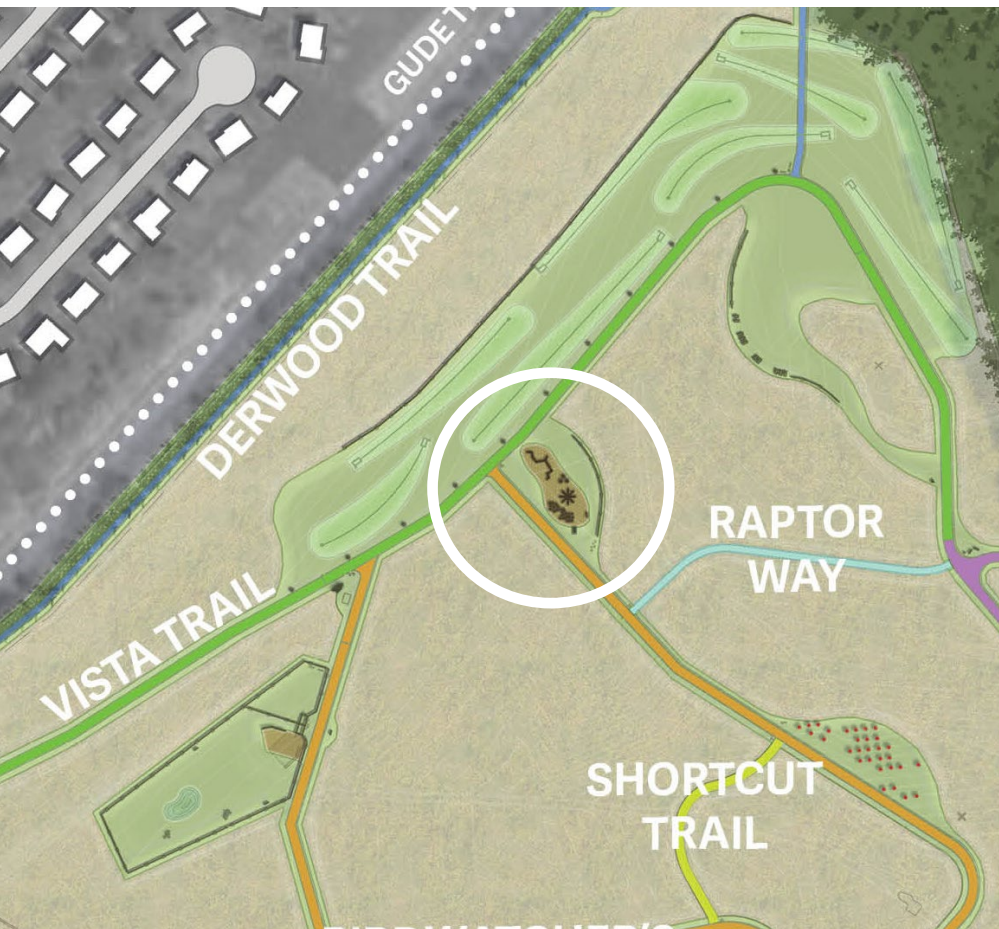


DESTINATION - CHILDREN'S NATURE PLAY



- Designated Area
- Maintained Lawn / Mulched Area
- Easy to Access /High visibility
- Nature Inspired Play Elements
- Encourages Exploration
- Children Curate their Own Play Experience

PLAN



BIRD HOUSES



MAGNIFYING GLASS



GAMES



CHILDREN'S NATURE PLAY - VISUALIZATION

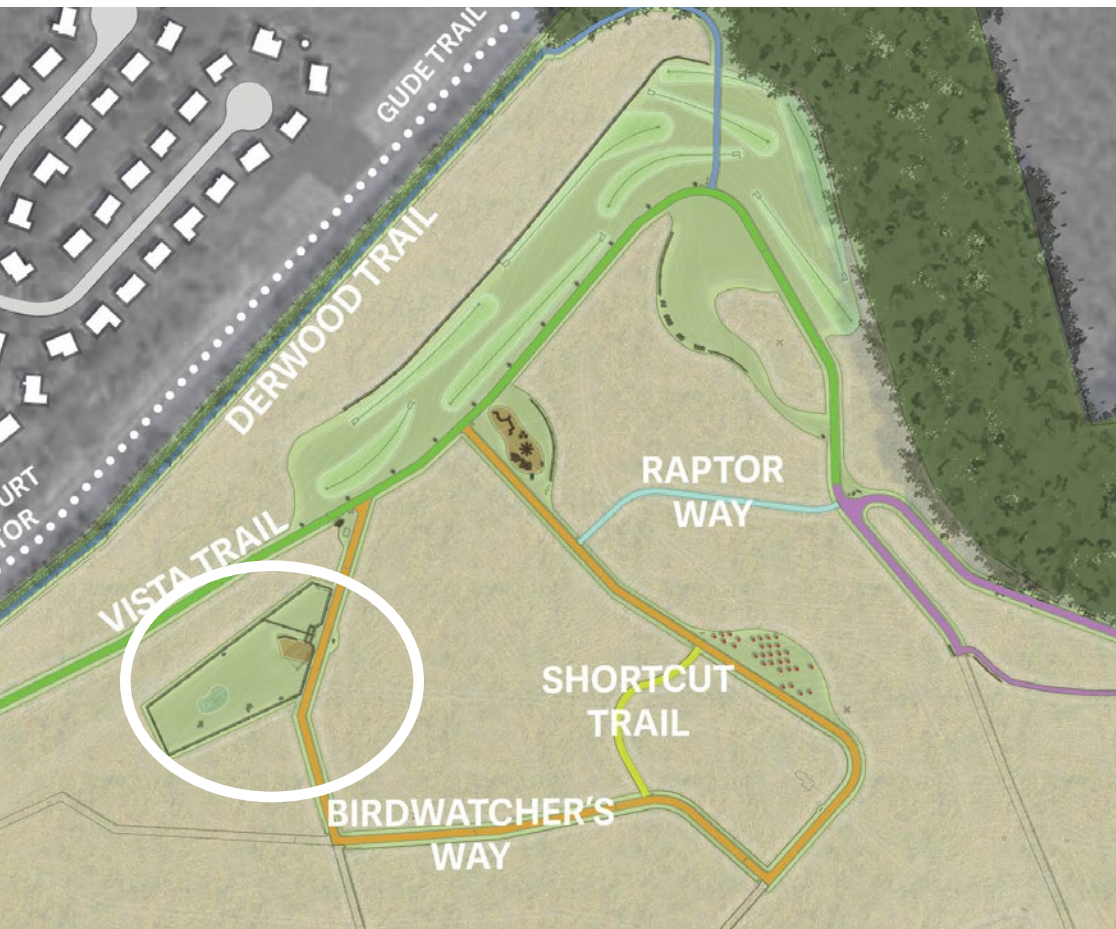


DESTINATION - DOG PLAY OFF LEASH



- Designated Area
- Fenced /Enclosed Space
- Maintained Lawn /Short Meadow
- Supervised /Off Leash Play
- Double Gated Entrance
- Separate Areas for Large and Small Dogs

PLAN



SEATING



FENCING

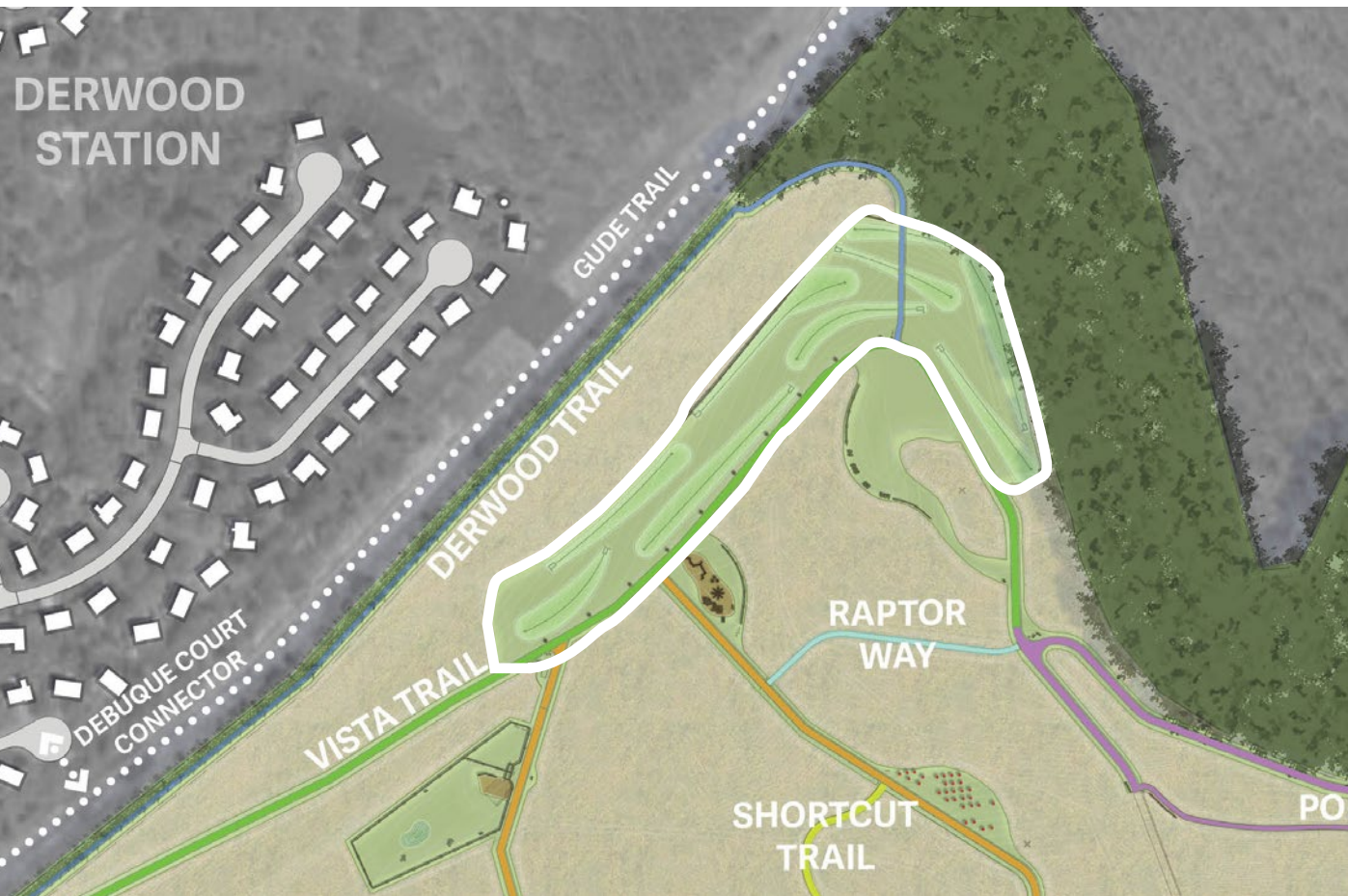


DESTINATION - DISC GOLF



- Designated Area
- 9-hole Course
- Maintained Lawn /Short Meadow

PLAN



SIGNAGE



TEE BOX



HABITAT CREATION and ENVIRONMENTAL AWARENESS

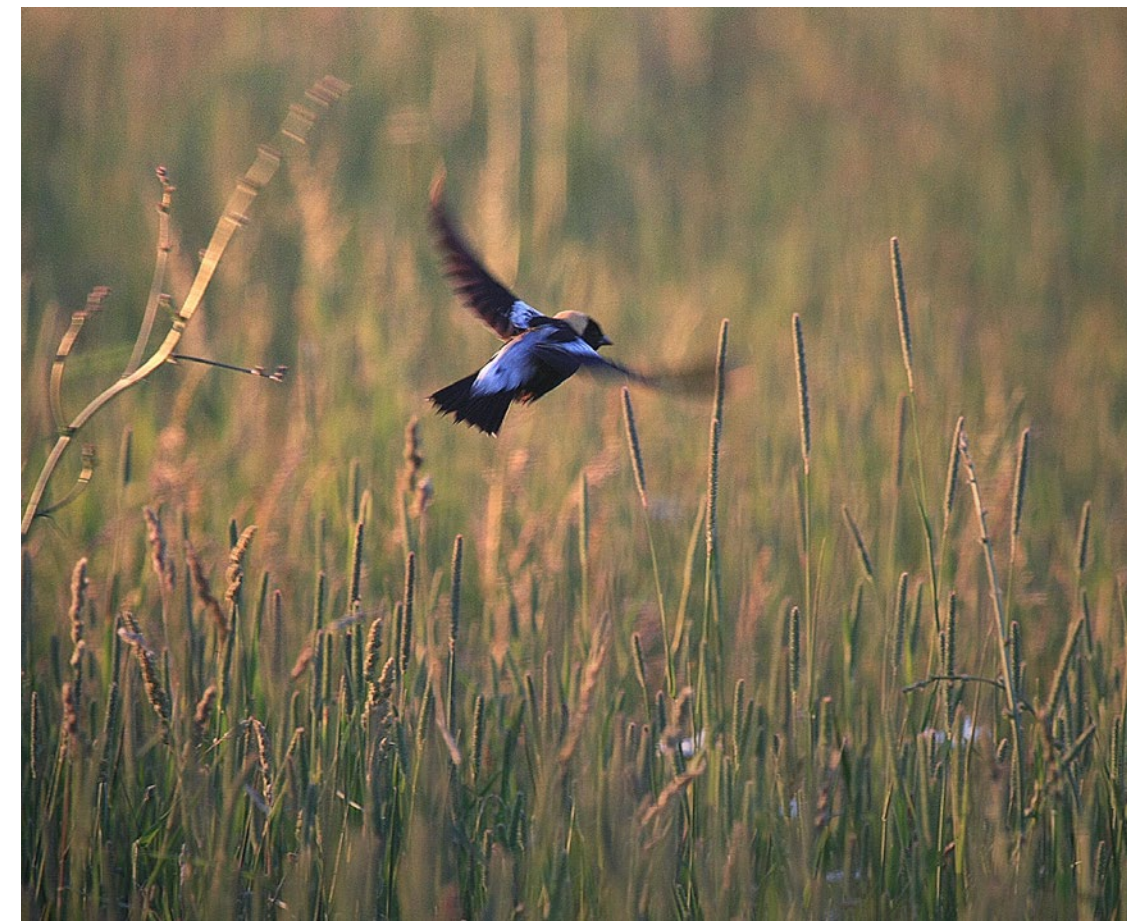


- **Open Field**
- **Native Meadow Planting**
- **Avian Habitat /Bird Nesting Boxes**
- **Educational Signage**

EDUCATIONAL SIGNAGE

NATIVE MEADOW

AVIAN HABITAT



WAYSTATIONS and ENVIRONMENTAL EDUCATION



- Waystation #1 - Evolution of the Landfill**
- Waystation #2 - Weather Station**
- Waystation #3 - Pollinator Habitat**
- Waystation #4 - Avian Habitat**

Elements included at waystations:

- Trail marker and directional signage
- Wayfinding map
- Educational signage
- Seating

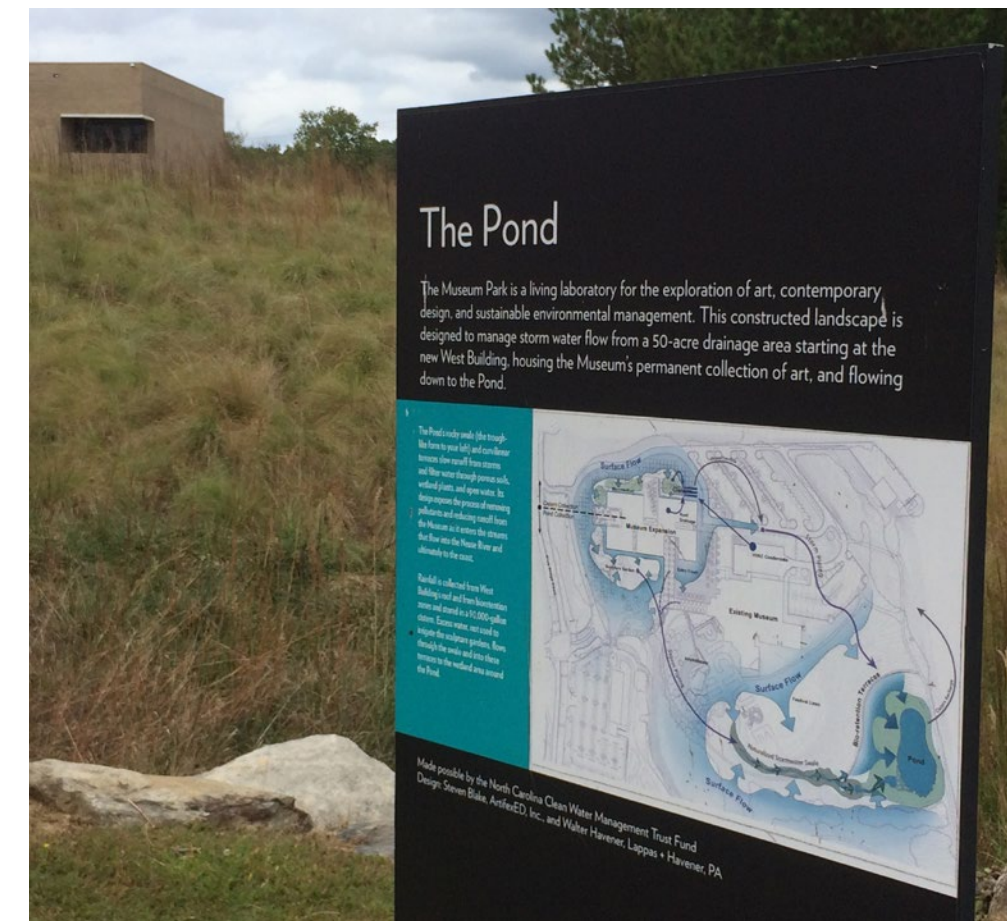
ENVIRONMENTAL ART



SEATING



EDUCATIONAL SIGNAGE



RECREATION TRAIL AND WAYSTATION - VISUALIZATION



WAYSTATIONS and ENVIRONMENTAL EDUCATION

EVOLUTION OF THE LANDFILL

4.8 MILLION TONS OF MUNICIPAL WASTE COLLECTED OVER 18 YEARS

MEADOW HABITAT + RECREATIONAL AMENITIES

THE PERMANENT LANDFILL CAPPING SYSTEM INCLUDES A LAYER OF SOIL.

EXCESS SOIL WAS SOURCED FROM LOCAL CONSTRUCTION PROJECTS.

METHANE GAS IS PRODUCED AS A BI-PRODUCT OF DECOMPOSITION OF THE WASTE. THE GAS IS COLLECTED IN A NETWORK OF UNDERGROUND PIPES AND TRANSPORTED TO A FLARE STATION THAT BURNS THE EXCESS METHANE.

LANDFILL GAS MONITORING WELLS ARE LOCATED THROUGHOUT THE SITE.

VARIES 55' - 100'

PRE - LANDFILL PERIOD
PRIOR TO DEVELOPMENT AS A LANDFILL THE PROPERTY WAS OWNED BY ADOLPH GUDE & SON'S NURSERY, INC. IN ADDITION TO THE NURSERY A PRIVATE AIRFIELD WITH A 2,000 FOOT RUNWAY WAS CONSTRUCTED IN THE 1950'S.

1965

ACTIVE LANDFILL PERIOD
GUIDE LANDFILL IS THE OLDEST FORMAL LANDFILL IN MONTGOMERY COUNTY. THE LANDFILL ENCOMPASSES A 100 ACRE FOOTPRINT.

1982

POST CLOSURE CARE PERIOD
UPON CLOSURE, A THIRTY YEAR PERIOD IS REQUIRED TO MONITOR AND MAINTAIN THE EFFECTIVENESS AND INTEGRITY OF WASTE CONTAINMENT SYSTEMS. THE GUIDE LANDFILL CONCERNED CITIZENS, AN AD HOC COMMITTEE WAS FORMED IN 2010 TO FUNCTION AS A LIAISON BETWEEN MONTGOMERY COUNTY AND EXISTING RESIDENTS LIVING ADJACENT TO THE LANDFILL.

2020

RESTORED LANDSCAPE PERIOD
INSTALLATION OF THE PERMANENT LANDFILL CAP ALLOWS FOR REUSE OF THE PROPERTY AS A PASSIVE RECREATION PARK AND MEADOW HABITAT. THE VISION FOR THE PARK WAS ACTIVELY DEVELOPED THROUGH WORKSHOPS WITH THE GUIDE LANDFILL CONCERNED CITIZENS COMMITTEE.

GUIDE LANDFILL RECREATION PARK DEPARTMENT OF ENVIRONMENTAL PROTECTION MONTGOMERY COUNTY - MARYLAND

METEOROLOGICAL WEATHER STATION

TELEMETRY
SENDS DATA TO THE ONLINE DATABASE THAT IS ACCESSIBLE TO GOVERNMENT OFFICIALS, SCIENTISTS AND THE PUBLIC.

SOLAR RADIATION SENSOR
MEASURES SOLAR RADIATIONS FOR EVAPOTRANSPIRATION AND TEMPERATURE / HUMIDITY / SUN / WIND INDEX.

TEMPERATURE + HUMIDITY
USING A CAPACITIVE HUMIDITY SENSOR OR HYGROMETER IT LOGS THE AVERAGE DAILY HUMIDITY PERCENTAGE BY TRACKING THE CHANGES OF ELECTRICAL CHARGES OR TEMPERATURE IN THE AIR. IT ALSO LOGS HIGH, LOW AND AVERAGE TEMPERATURE USING A BUILT IN THERMOMETER.

DATA LOGGER
DATA LOGGER IS AN ELECTRONIC INSTRUMENT THAT RECORDS MEASUREMENTS AT SET INTERVALS OVER TIME. IT ALSO STORES THE BATTERY, MICROPROCESSOR AND DATA STORAGE OF THE SENSORS.

WIND SENSOR
PHYSICAL DEVICE THAT COLLECTS DIRECTION OF THE WIND BY THE HORIZONTAL ROTATION OF THE WHOLE DEVICE. THE ANEMOMETER ARE THE BLADES AT THE END THAT DETECT WIND SPEED AS THEY ROTATE VERTICALLY.

SOLAR PANEL
PHOTO-VOLTAIC CELLS (PV) GENERATE DIRECT CURRENT (DC) ELECTRICITY BY ABSORBING SUNLIGHT. THE ENERGY IS STORED IN A BATTERY LOCATED IN THE DATA LOGGER.

RAIN GAUGE
WHEN IT RAINS, WATER COLLECTS IN THE GAUGE GOING THROUGH A FUNNEL SYSTEM. AFTER A PRE-DETERMINED AMOUNT IS COLLECTED THE WATER IS RELEASED SENDING A SIGNAL TO THE DATA LOG.

METEOROLOGICAL WEATHER STATION
LATITUDE: 39°6'47" N
LONGITUDE: 77°8'42" W
SITE ELEVATION: 400 FEET MSL
TOWER HEIGHT: 3 METERS (10 FEET)
SYSTEM ID: 170630-001
SYSTEM TYPE: MIDAS / CLIMATRONICS / WM283

FOR DAILY WEATHER DATA SCAN QR CODE

GUIDE LANDFILL RECREATION PARK DEPARTMENT OF ENVIRONMENTAL PROTECTION MONTGOMERY COUNTY - MARYLAND

AVIAN HABITAT

OPEN MEADOW IS A VITAL HABITAT FOR MANY AVIAN SPECIES. ALLOWING SPACE FOR HUNTING SMALL GROUND MAMMALS, SUCH AS RABBITS, RATS, SNAKES, ALONG WITH PRECIOUS GROUND HABITAT FOR GROUND NESTING BIRDS. MEADOW HABITAT IS SCARCE BY IN THE URBAN LAND USE AND DENSITY OF MONTGOMERY COUNTY.

OVER 200+ BIRD SPECIES HAVE BEEN IDENTIFIED IN THE VICINITY.

EBIRD IS AN INTERACTIVE TOOL THAT ALLOWS YOU AND OTHERS TO CROWD-SOURCE INFORMATION ABOUT BIRDS YOU SEE ANYWHERE OVER TIME. IT CREATES A GREAT POOL OF DATA OF TRACKING WHAT BIRDS ARE IN THE AREA. IT IS ACCESSIBLE ON YOUR PHONE AND COMPUTER.

DOWNLOAD THE APP TODAY TO BEGIN THE COUNT!

BALD EAGLE
Haliaeetus leucocephalus

AMERICAN KESTREL
Falco sparverius

BARN OWL
Tyto alba

BROWN-HEADED COWBIRD
Molothrus ater

COMMON GRACKLE
Quiscalus quiscula

BLACK-HEADED ORIOLE
Oriolus larvatus

RED-SHOULDERED HAWK
Buteo lineatus

DARK-EYED JUNCO
Junco hyemalis

ART INSTALLATION PROVIDES A VISUAL OF A FLOCK OF BIRDS TRAVERSING THE MEADOW REPRESENTING THE HAVEN THIS PARK IS FOR NUMEROUS SPECIES. IT ALSO ACTS AS A PERCH FOR MANY RAPTOR SPECIES TO HUNT ON OR A PLACE TO REST ON THEIR JOURNEY. IT ALSO ACTS AS AN INTRIGUING WAYFINDING DEVICE WITHIN THE PARK.

GUIDE LANDFILL RECREATION PARK DEPARTMENT OF ENVIRONMENTAL PROTECTION MONTGOMERY COUNTY - MARYLAND

POLLINATOR HABITAT

CORRIDOR HABITATS
CONNECTED OPEN SPACE CORRIDORS ALLOW FOR THE FREE MOVEMENT OF GROUND SPECIES WITHOUT THE HAZARDS CREATED BY INTERRUPTIONS AND OBSTACLES SUCH AS ROADS, BUILDINGS, OR WALLS. EXPANSION OF URBAN DEVELOPMENT OFTEN RESULTS IN FRAGMENTATION OF CORRIDORS AND ISOLATION OF CRITICAL HABITAT. GUIDE LANDFILL RECREATION PARK IS LOCATED CONTIGUOUS TO THREE CONVERGING CORRIDORS WHICH STRENGTHENS THE OPPORTUNITY FOR BIODIVERSITY OF SPECIES.

FOOD NETWORK
GUIDE LANDFILL RECREATION PARK IS AN OPEN MEADOW HABITAT, CONTRASTING WITH THE PREDOMINANTLY FORESTED CORRIDORS THAT FOLLOW THE STREAM VALLEYS OF CRABBS BRANCH AND ROCK CREEK. THE MEADOW IS COMPRISED OF OVER 30 DISTINCT NATIVE GRASS AND PERENNIAL PLANT SPECIES THAT OFFER FOOD AND NESTING SITES FOR INSECTS, CATERPILLARS AND BUTTERFLIES, AND GRASSHOPPERS TO NAME A FEW.

WHY IS THIS IMPORTANT? THE MEADOW FUNCTIONS AS THE BASE OF THE FOOD WEB THAT SUPPORTS AVIAN SPECIES.

FOOD WEB DIAGRAM REPRESENTATIVE OF SPECIES SUPPORTED BY COMMON MILKWEED, A NATIVE PERENNIAL PLANT SPECIES.

IN SOME INSTANCES, SPECIES LIKE THE MONARCH BUTTERFLY, ARE SPECIALISTS AND RELY ON ONLY ONE PLANT TO SERVE AS HOST PLANT AND FOOD FOR THEIR CATERPILLARS. MONARCH BUTTERFLIES LAY EGGS ONLY ON THE MILKWEED PLANT.

GUIDE LANDFILL RECREATION PARK DEPARTMENT OF ENVIRONMENTAL PROTECTION MONTGOMERY COUNTY - MARYLAND

ENVIRONMENTAL ART - VISUALIZATION



ENVIRONMENTAL EDUCATION

6 AVIAN SPECIES



BARN OWLS HAVE EXCEPTIONAL VISION AND HEARING WHICH ALLOWS THEM TO HUNT AT NIGHT.

AS THEIR NAME SUGGESTS, BARN OWLS WILL OFTEN ROOST IN OLD BARN. LOOK FOR NESTING BOXES INSTALLED THROUGHOUT THE MEADOW TO ATTRACT THIS BIRD SPECIES.

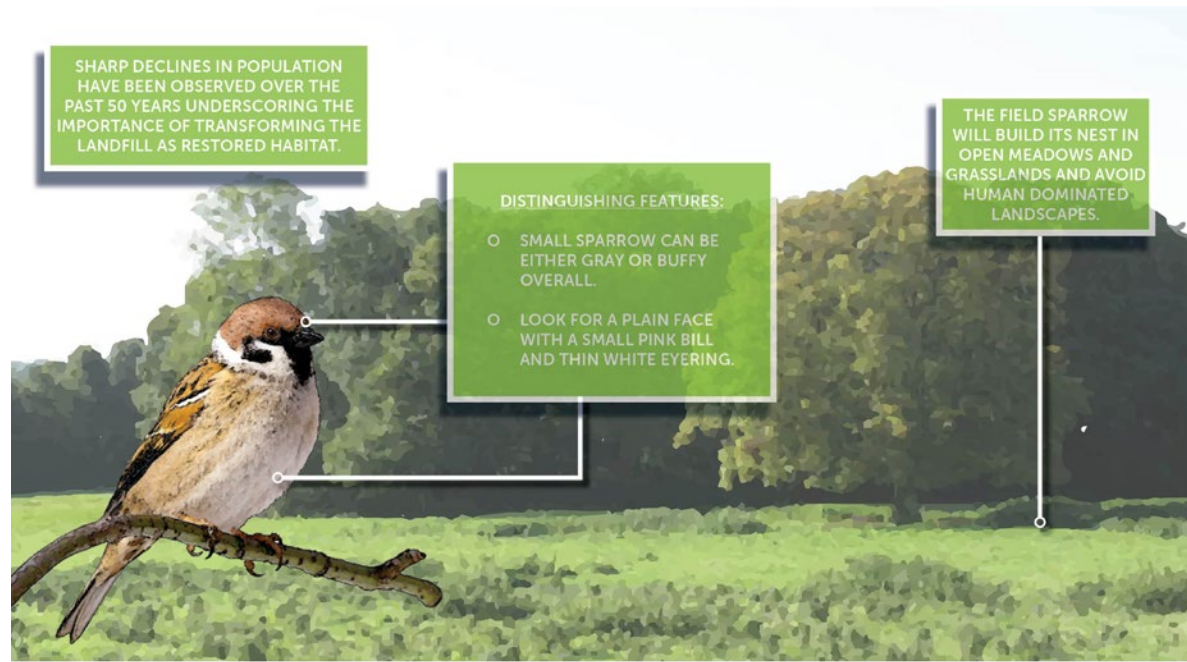
BARN OWLS REQUIRE LARGE AREAS OF OPEN LAND OVER WHICH TO HUNT, FLYING LOW, BACK AND FORTH OVER OPEN HABITATS, SEARCHING FOR SMALL RODENTS.

DISTINGUISHING FEATURES:

- WHITE HEART-SHAPED FACE WITH DARK COLORED EYES.
- WHITE UNDERWING, CHEST, AND BELLY WITH SMALL GREY SPOTTING.
- ORANGE-BROWN COLORING ABOVE.

BARN OWL
Tyto alba

DEPARTMENT OF ENVIRONMENTAL PROTECTION
MONTGOMERY COUNTY • MARYLAND



SHARP DECLINES IN POPULATION HAVE BEEN OBSERVED OVER THE PAST 50 YEARS UNDERSCORING THE IMPORTANCE OF TRANSFORMING THE LANDFILL AS RESTORED HABITAT.

DISTINGUISHING FEATURES:


- SMALL SPARROW CAN BE EITHER GRAY OR BUFFY OVERALL.
- LOOK FOR A PLAIN FACE WITH A SMALL PINK BILL AND THIN WHITE EYERING.

THE FIELD SPARROW WILL BUILD ITS NEST IN OPEN MEADOWS AND GRASSLANDS AND AVOID HUMAN DOMINATED LANDSCAPES.

FIELD SPARROW
Spizella pusilla

DEPARTMENT OF ENVIRONMENTAL PROTECTION
MONTGOMERY COUNTY • MARYLAND

6 FLORA SPECIES



MONARCHS WILL LAY EGGS ONLY ON MILKWEED PLANTS AND MILKWEED IS THE SOLE SOURCE OF FOOD FOR THEIR CATERPILLARS.

COMMON MILKWEED IS MOST WELL KNOWN AS THE HOST PLANT FOR THE MONARCH BUTTERFLY.


COMMON MILKWEED REACHES UP TO 6 FEET IN HEIGHT AND BLOOMS FROM MAY TILL AUGUST.

IN FALL, SEED PODS WILL ORIENT TOWARD THE SUN AND MATURE. EACH SEED POD CAN HOLD UP TO 200 SEEDS THAT ARE DISPERSED ON THE WIND.

SOMETHING YOU MAY NOT KNOW, MONARCHS AREN'T THE ONLY INSECT TO FAVOR COMMON MILKWEED. ONE STUDY FOUND 147 ANIMAL AND INSECT SPECIES SPEND ALL OR PART OF THEIR LIVES CONNECTED TO IT.

COMMON MILKWEED
Asclepias syriaca

DEPARTMENT OF ENVIRONMENTAL PROTECTION
MONTGOMERY COUNTY • MARYLAND



TALL BONESET HAS A FAN-SHAPED CLUSTER OF WHITE BLOOMS AND IS EASILY SPOTTED IN THE MEADOW AUGUST THROUGH OCTOBER.

THE FLOWERS ATTRACT BUTTERFLIES, NATIVE BEES, POLLINATING FLIES, WASPS AND BEETLES. MOTHS OF SEVERAL CATERPILLARS FEED ON THE FOLIAGE.

HISTORICALLY, THIS PLANT WAS USED FOR MEDICINAL PURPOSES BY EARLY AMERICANS.

TALL BONESET
Eupatorium seratinum

DEPARTMENT OF ENVIRONMENTAL PROTECTION
MONTGOMERY COUNTY • MARYLAND



SIGNAGE TYPOLOGY



DISC GOLF TEE POST

EDUCATION POST

DIRECTIONAL SIGN POST

INFORMATION SIGN (SMALL)

INFORMATION SIGN (LARGE) EDUCATION SIGN

TRAIL MARKER

10 foot
9 foot
8 foot
7 foot
6 foot
5 foot
4 foot
3 foot
2 foot
1 foot

DESTINATIONS



ACCESS POINT



DOG PLAY



HIGH POINT OVERLOOK



DISC GOLF



CHILDREN'S PLAY



ART INSTALLATION

TRAILS



DERWOOD TRAIL



BIRDWATCHER'S WAY



POLLINATOR LOOP



VISTA TRAIL



RAPTOR WAY



SHORTCUT TRAIL



SERVICE ROAD (NO ACCESS)



REGIONAL NETWORK



ANTICIPATED IMPLEMENTATION SCHEDULE

Project Phase	2020				2021				2022				2023				2024				2025				2025				2025			
	Q1	Q2	Q3	Q4	Q1	Q2	Q3	Q4	Q1	Q2	Q3	Q4	Q1	Q2	Q3	Q4	Q1	Q2	Q3	Q4	Q1	Q2	Q3	Q4	Q1	Q2	Q3	Q4	Q1	Q2	Q3	Q4
Landfill Cap Design and Permitting	[Blue Shading]																															
Procurement Activities for Construction					[Blue Shading]																											
Landfill Cap Construction									[Grey Shading]				[Grey Shading]				[Grey Shading]				[Grey Shading]											
Landfill Cap Maintenance*																									[Blue Shading]							

*Maintenance of the cap will continue in perpetuity

NO SHADING: NO SITE ACTIVITY

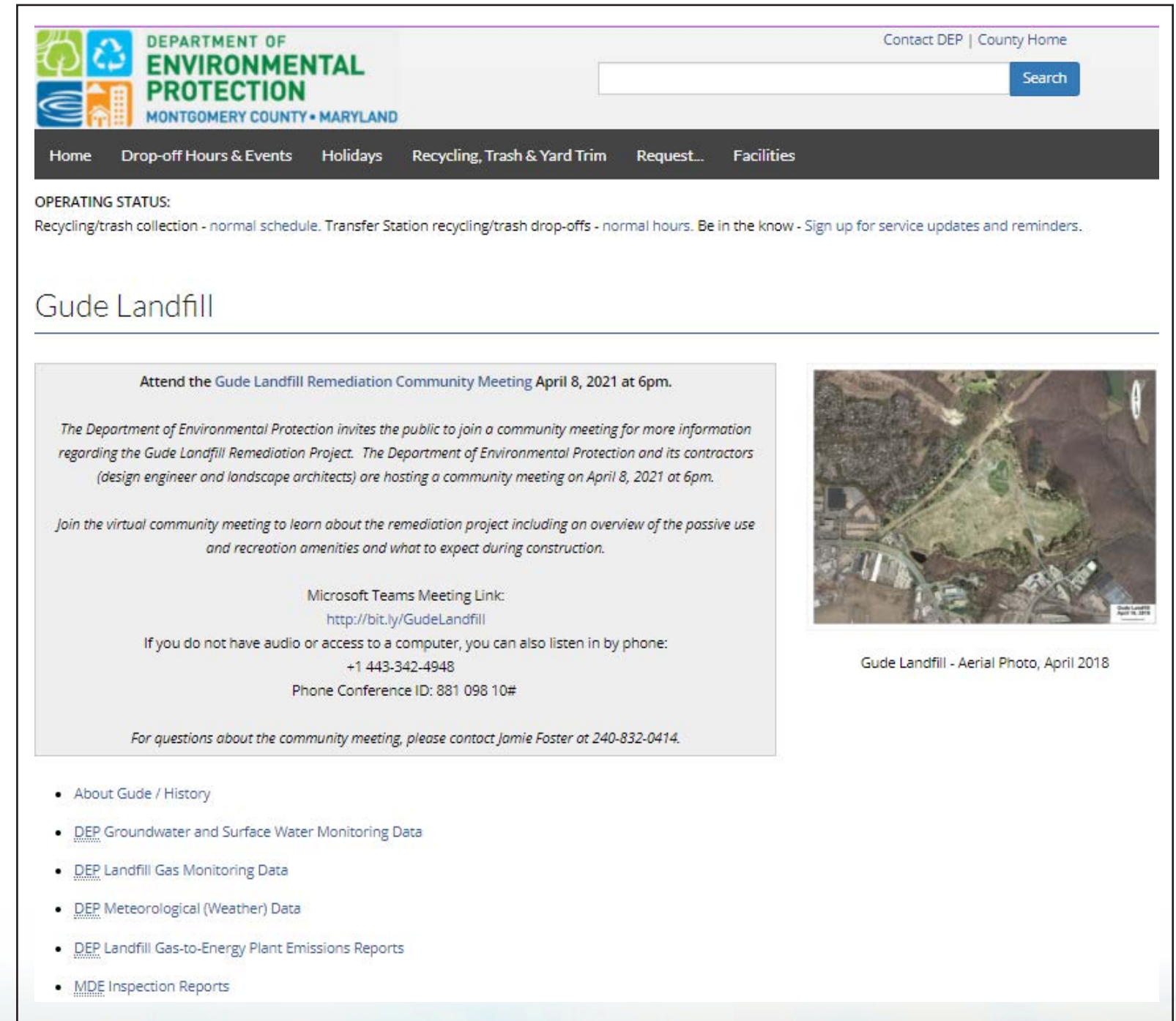
ORANGE SHADING: CONSTRUCTION

GREEN SHADING: CONSTRUCTION COMPLETE



ONGOING COMMUNITY ENGAGEMENT

- **GLCC/DEP Meetings**
- **DEP will continue to present documents to the community at principal milestones**
- **DEP will continue to post documents to the remediation web page**



The screenshot shows the website for the Department of Environmental Protection (DEP) in Montgomery County, Maryland, specifically the Gude Landfill page. The header includes the DEP logo and navigation links like 'Home', 'Drop-off Hours & Events', and 'Recycling, Trash & Yard Trim'. A search bar is also present. The main content area features an announcement for a community meeting on April 8, 2021, at 6pm. The text invites the public to learn about the remediation project and provides a Microsoft Teams meeting link and a phone conference ID. An aerial photo of the landfill is shown on the right. A list of links for more information is provided at the bottom of the page.

DEPARTMENT OF ENVIRONMENTAL PROTECTION
MONTGOMERY COUNTY • MARYLAND

Contact DEP | County Home

Search

Home Drop-off Hours & Events Holidays Recycling, Trash & Yard Trim Request... Facilities

OPERATING STATUS:
Recycling/trash collection - normal schedule. Transfer Station recycling/trash drop-offs - normal hours. Be in the know - Sign up for service updates and reminders.

Gude Landfill

Attend the Gude Landfill Remediation Community Meeting April 8, 2021 at 6pm.


The Department of Environmental Protection invites the public to join a community meeting for more information regarding the Gude Landfill Remediation Project. The Department of Environmental Protection and its contractors (design engineer and landscape architects) are hosting a community meeting on April 8, 2021 at 6pm.

Join the virtual community meeting to learn about the remediation project including an overview of the passive use and recreation amenities and what to expect during construction.

Microsoft Teams Meeting Link:
<http://bit.ly/GudeLandfill>

If you do not have audio or access to a computer, you can also listen in by phone:
+1 443-342-4948
Phone Conference ID: 881 098 10#

For questions about the community meeting, please contact Jamie Foster at 240-832-0414.



Gude Landfill - Aerial Photo, April 2018

- [About Gude / History](#)
- [DEP Groundwater and Surface Water Monitoring Data](#)
- [DEP Landfill Gas Monitoring Data](#)
- [DEP Meteorological \(Weather\) Data](#)
- [DEP Landfill Gas-to-Energy Plant Emissions Reports](#)
- [MDE Inspection Reports](#)



COUNTY CONTACTS & INFORMATION

- **Jamie Foster – County Project Manager**
 - **Senior Engineer, RRMD**
 - **240-777-6574; Jamie.Foster@montgomerycountymd.gov**
- **Gude Landfill Remediation Web page**
 - **<http://www.montgomerycountymd.gov/sws/facilities/gude/>**
- **For any concerns or questions during construction:**
 - **240-777-0311**

