

# Clarksburg Library Community Meeting



February 13, 2025



# Agenda

- Welcome and Introductions
- The Design Process – How We Got Here
  - What Have We Heard From You! - Clarksburg Library Project Background – Recap
  - Vision, Guiding Principles + Trends in Library Design
  - Library Program Summary
  - Design Progress Since the last Community Meeting
- Project Schedule
- Q & A

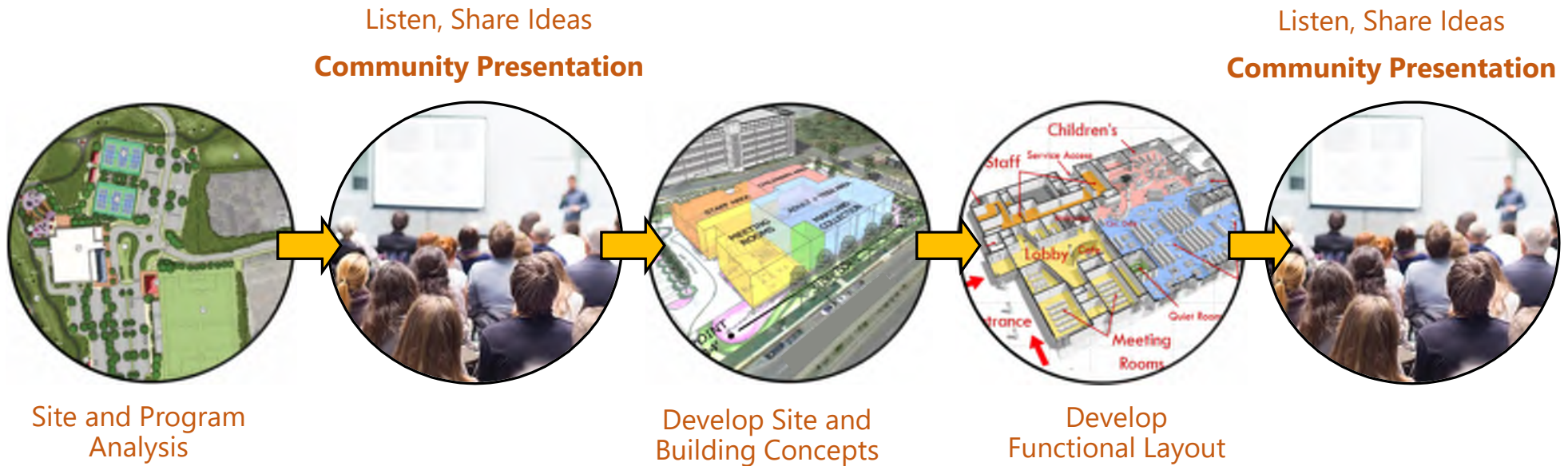
# 30+ YEARS OF LIBRARIES

1ST public library client from 1990 is still an active client



- Burke Centre Library + Program FCPL
- Sterling Library + Program LCPL
- Gum Spring Library + Program LCPL
- Elkridge Library + Senior Activity Center HCPLS
- Crozet Library + Program JMRLS
- Miller Branch Library + Program HCLS
- East Columbia Branch Library HCLS
- Glenwood Branch Library + Program HCLS
- Savage Branch Library + Program HCLS
- **Wheaton Library + Comm. Center MCPL**
- **Connie Morella Library (Bethesda) MCPL**
- **Rockville Memorial Library MCPL**
- **Quince Orchard Library MCPL**
- Hopewell Library + Program ARLS
- Frostburg Library + Program APL
- George's Creek Library + Program APL
- Perryville Library + Program CCPL
- Prince Frederick Library & Program CCPL
- Crofton Library AACPL
- Riviera Beach Library + Program AACPL
- Hyattsville Library + Program PGCMLS
- Laurel Library + Program PGCMLS
- Leonardtown Library + Senior Center SMCPLS

# THE DESIGN PROCESS



# 1<sup>st</sup> Community Meeting Spring 2024

5



## **LIBRARY VISION FROM MEETING:**

- OPEN FLEXIBLE, NATURAL LIGHT
- COLLABORATION AREAS
- MULTI-PURPOSE ROOM
- FLEXIBLE AND VARIABLE SEATING TYPES
- SINGLE CUSTOMER SERVICE AREA
- LATEST TECHNOLOGY
- FUN CHILDREN and TEEN AREAS
- PEDESTRIAN ACCESS FROM A MAJOR ROAD

## **COMMUNITY FEEDBACK:**

- DIRECT STREET ACCESS
- COMMUNITY VISIBILITY
- CONSIDER PROVIDING SENIOR PROGRAMMING
- PUBLIC TRANSPORTATION ACCESS
- PEDESTRIAN / BIKE ACCESS

# Key **Site** Considerations



- Relationship to Frederick Rd. and Stringtown Rd.
- Relationship to future Housing development/Clarksridge Rd.
- Public Transportation Access
- Pedestrian Access to Historic Areas
- Respect the Historic Home
- Topography/Grading
- Parking and Access
- One story vs Two stories
- Net Zero – Geothermal well field
- Solar Orientation
- SWM outlet location
- Sanitary Sewer Location

## Key **Building** Considerations

7

- Space for all Library Programs
- Strong Preference for Library Services on one level
- Preference for a single main entry point
- Building Design as a Public and Community Facility
- After-hours access Views / Natural Light
- Net Zero Energy and Zero Green House Gas Emission.

# Guiding Principles



8

- Create a **Beautiful, Welcoming** public library that **the Community is proud of.**
- **Easy to Operate:** design with function in mind for both staff as well as library users.
- Balance the feel of the library as **a place for books and a place for People.**
- Create an active environment from the moment one arrives with a **variety of spaces** for activities and resources.
- Create a **Net-Zero and Zero Carbon Emission** sustainable facility that elegantly demonstrates its positive impact on the environment.
- Keep sound attenuation in mind – **Design for good sound environment.**
- Design and Color selections should be **timeless.**
- Design for **low maintenance facility**
- Design for **environmental resiliency** for site design, equipment and finishes.
- Award-Winning
- Be **Cost Effective and on Budget**



# Trends in Library Design

The image is a 3x3 grid of nine panels, each illustrating a trend in library design. The panels are arranged as follows:

- Top Left:** A photograph of a modern library interior with a curved, multi-level reading area and large windows. Text: **Excellent Sightlines + Lighting**
- Top Middle:** A photograph of a long library aisle with tall bookshelves. Text: **Robust Collection + Robust Technology**
- Top Right:** A photograph of a child sitting on a stone ledge next to a water fountain. Text: **Sustainable**
- Middle Left:** A line drawing of a person in a wheelchair with their arms raised, overlaid on a background of architectural plans. Text: **Universally Accessible**
- Middle Middle:** A photograph of a library interior with a curved ceiling and large windows. Text: **Balanced Acoustics**
- Middle Right:** A photograph of a group of people gathered around a table, looking at a laptop. Text: **Durable Materials**
- Bottom Left:** A photograph of a library interior with large windows and red armchairs. Text: **Natural Daylight**
- Bottom Middle:** A line drawing of five stylized human figures of different heights and colors. Text: **Thermal Comfort**
- Bottom Right:** A photograph of a library interior with a glass partition and colorful furniture. Text: **Flexible + Adaptable Rooms**

# Trends

These are not actual pictures related to this library

1

## Services + Connected Learning

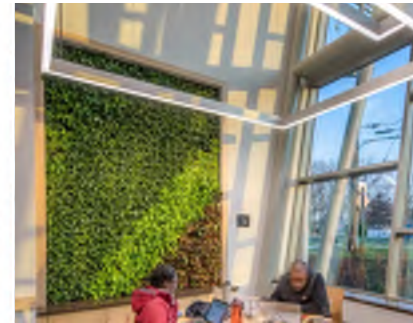
10



# Trends

These are not actual pictures related to this library

# 2



# Design for Wellbeing <sup>11</sup>

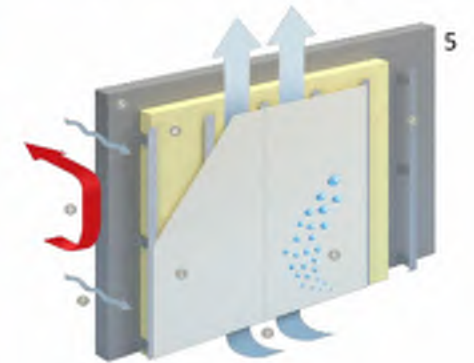
# Trends

These are not actual pictures related to this library

# 3

# Design for Resiliency

12



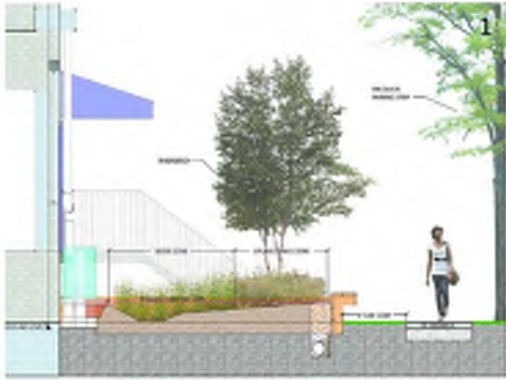
# Trends

These are not actual pictures related to this library

# 4

## Design for Energy Efficiency and Sustainability

13



# Library Program Summary *at a glance*

14

- **ADULT AREA**
- **TEEN AREA**
- **CHILDRENS AREA**
- **CHILDRENS PROGRAMMING ROOM**
- **BUILDING LOBBY**
- **PUBLIC MEETING ROOM**
- **QUIET STUDY ROOM**
- **COLLABORATION ROOMS**
- **STAFF WORK AREAS**

# Project Regional Location



# Site Analysis

## SITE ANALYSIS LEGEND

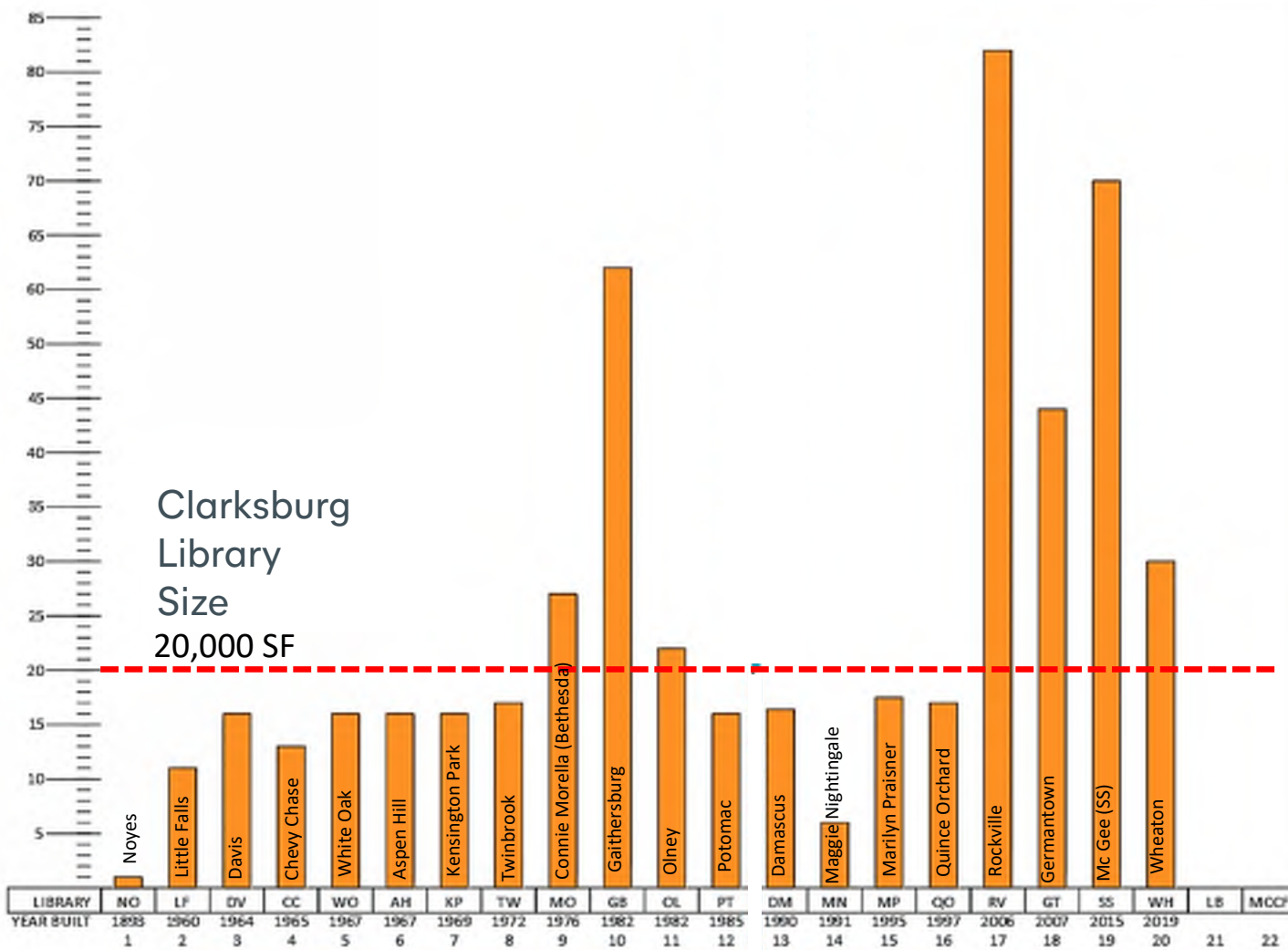
- PROPERTY LINE
- SEWER EASEMENT
- 10' SETBACK FROM ROAD
- 30' SETBACK FROM HISTORIC HOME
- SW OUTLET

HISTORIC HOME





SQUARE FOOTAGE IN THOUSANDS

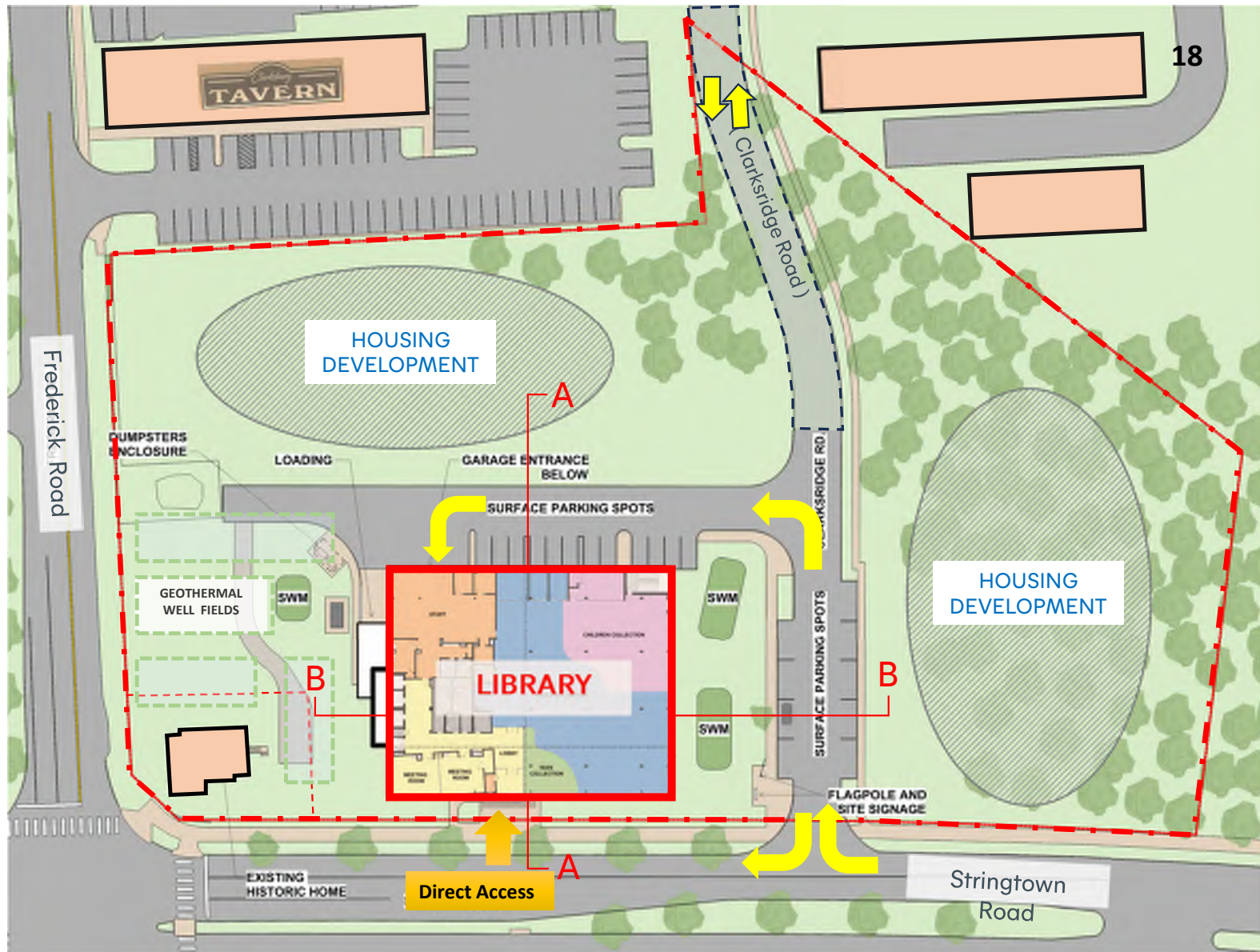


Clarksburg  
Library  
Size  
20,000 SF

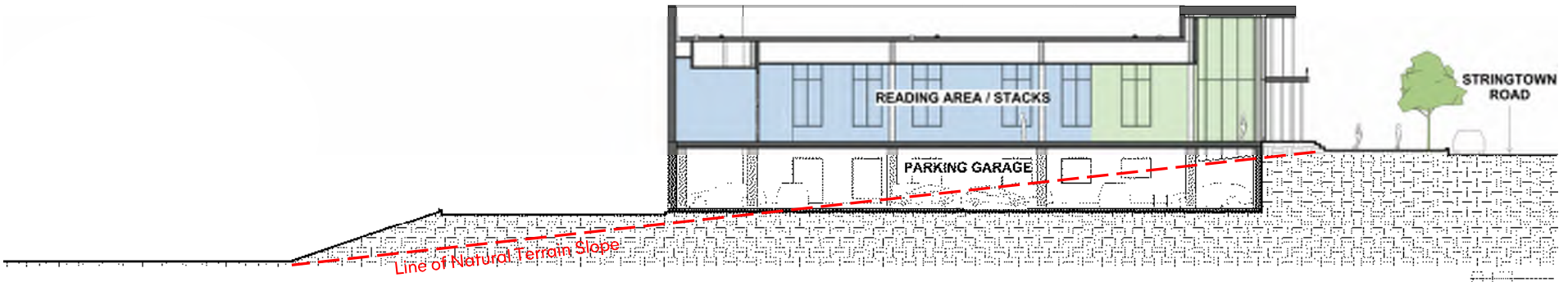
LIBRARY BUILDING IN CHRONOLOGICAL ORDER BY YEAR BUILT

# Site Plan

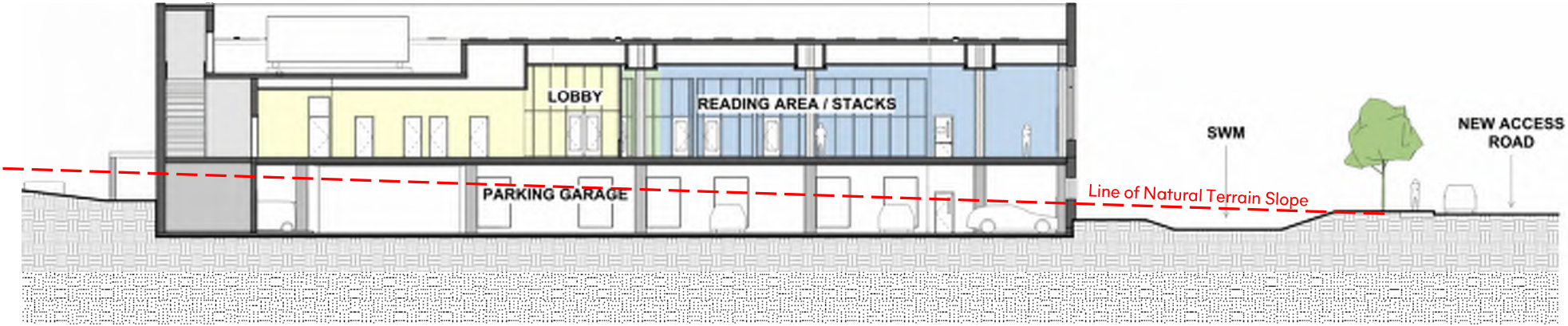
Compare with some other libraries of the same size  
Olney  
Bethesda



# Building Sections

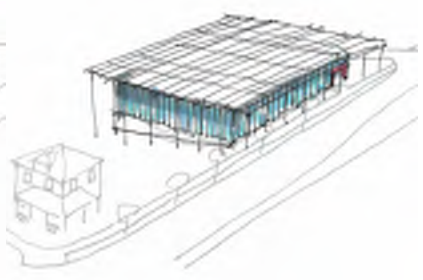
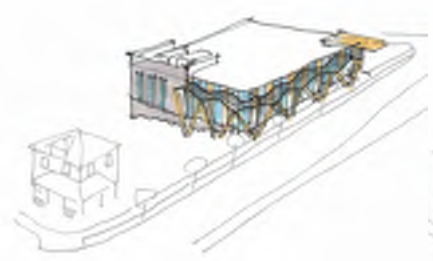
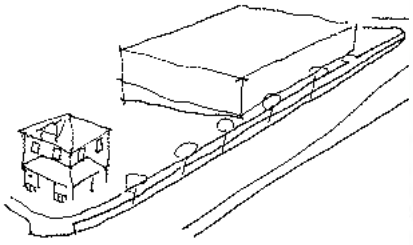


Cross-Section A



Longitudinal Section B

# Building Massing Concept



# Building Massing **Concept**



Aerial View Looking North



Aerial View Looking West

# Building Character



Main/Front Elevation Along Stringtown Road

# Elevation Character



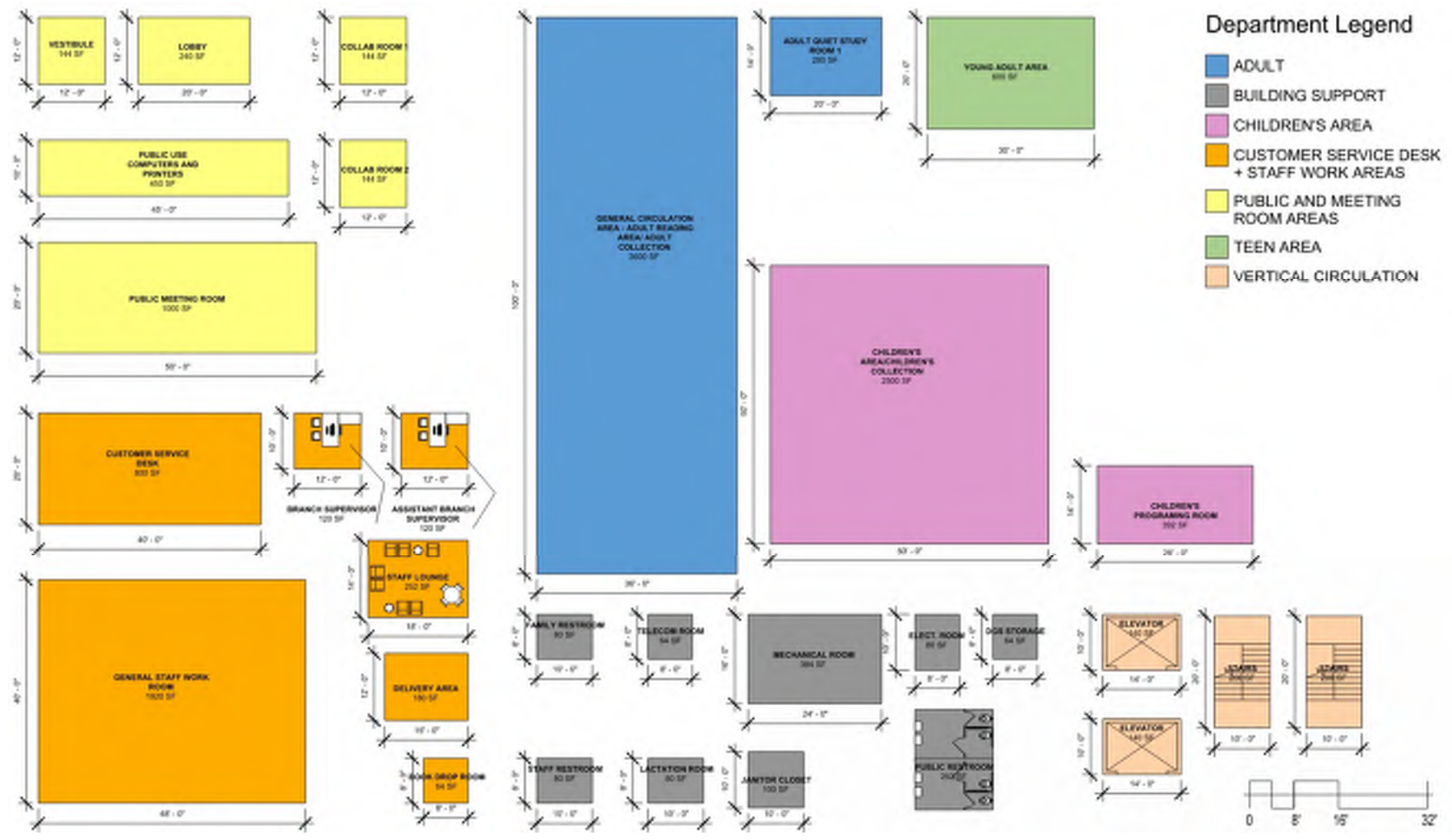
View from Frederick and Stringtown Road  
Intersection



View from Stringtown Road going  
West

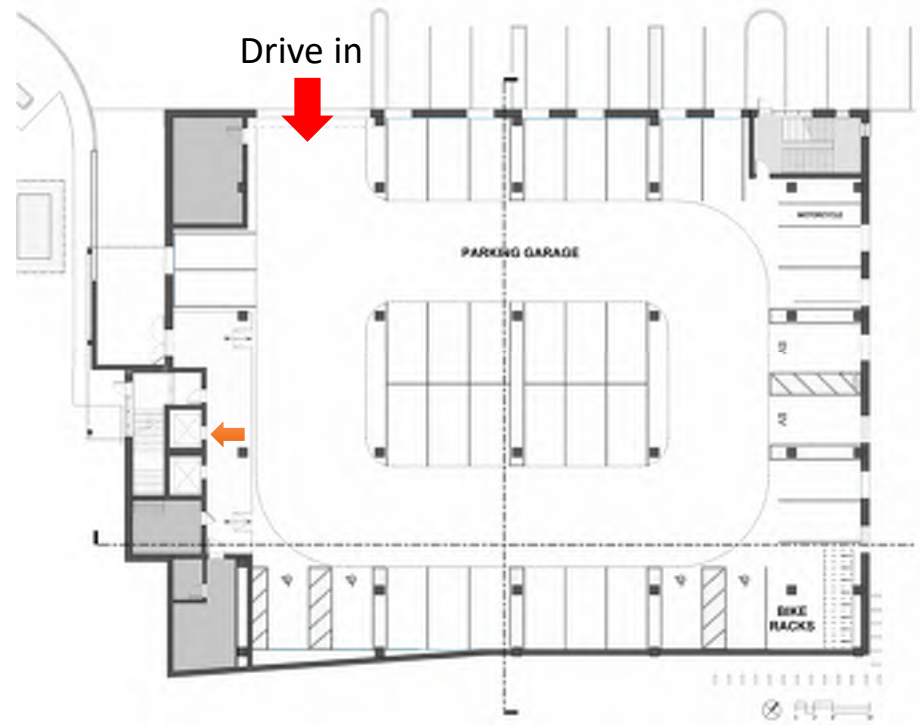
For illustration purpose many trees are not shown

# Relative Size of Various Areas – 20,000 GSF Library





# Building Plans



Ground-Level Parking



Walk in Library Floor Plan



# Library Floor Plan



Walk in from the street

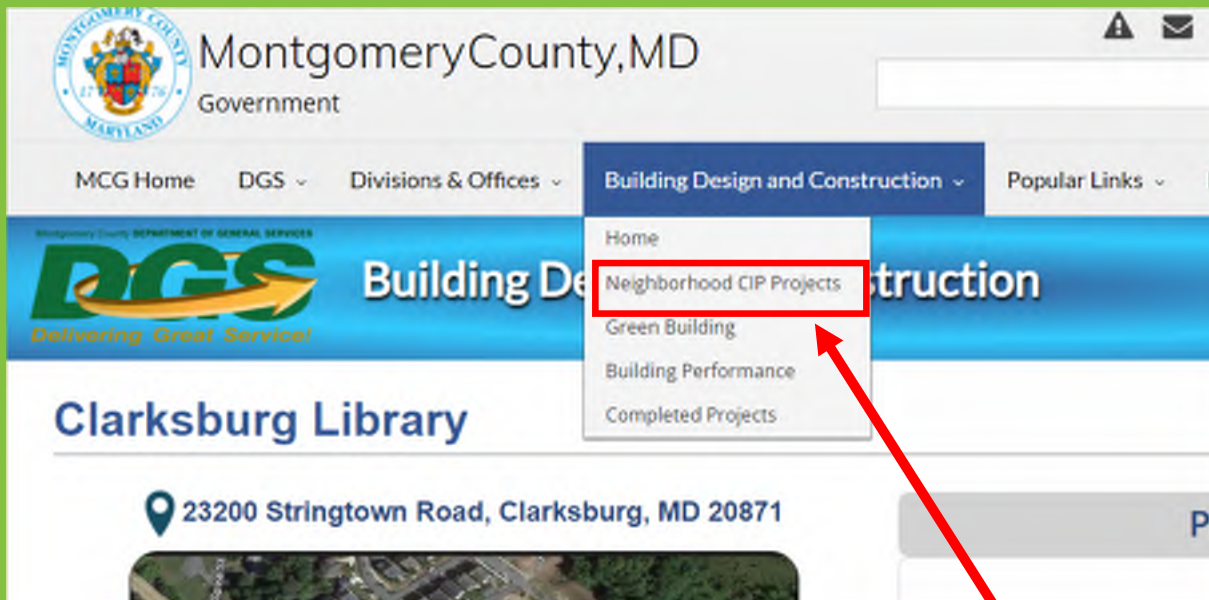


# Clarksburg Library - ***PROJECT SCHEDULE***

**Design Started ..... Spring 2024**  
**Bid Start ..... Spring 2026**  
**Construction Start ..... Summer 2026**  
**End of Construction ... Summer 2028**

# For Project Information

LATEST INFORMATION SHARED AT THE DGS WEBSITE:



Go to Montgomery County .gov and go to the Neighborhood CIP Projects drop-down

<https://www.montgomerycountymd.gov/DGS-BDC/UMC/710500.html>

# Thank You !



Questions / Comments

