

# CLARKSBURG LIBRARY

Capital Improvement Project No. 710500

## Historic Preservation Commission Presentation

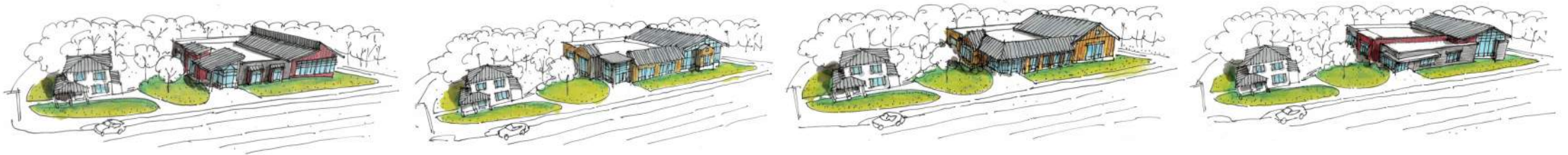
Meeting No.5

February 11, 2026



## 2. Design Progress Since Last HPC presentation

- Re-envisioned the aesthetics, form and massing of the project per HPC feedback
- Designer and Historic Preservation Office exchanged and shared precedent images
- Met with M-NCPPC Historic Preservation Office (HPO) staff on 12/18/25
  - Reviewed several options in a design charrette
- Met with M-NCPPC Historic Preservation Office staff again on 01/08/26
  - Reviewed updated options and had another design charrette



3.

## Precedent Images

# 4. Precedent Images

From HPO and A/E

The current proposed design addresses the HPC's comments on massing, context and materiality. The suggestion of a rural barn typology was explored and adapted through work sessions with the HPO.



# 5. Precedent Images

From HPO and A/E



6.

Preliminary Design Studies  
Option A and B as part of the Design Charrettes to  
Develop Recommended Proposed Design (Slide 17)

# 7. Preliminary Design Study – Option A



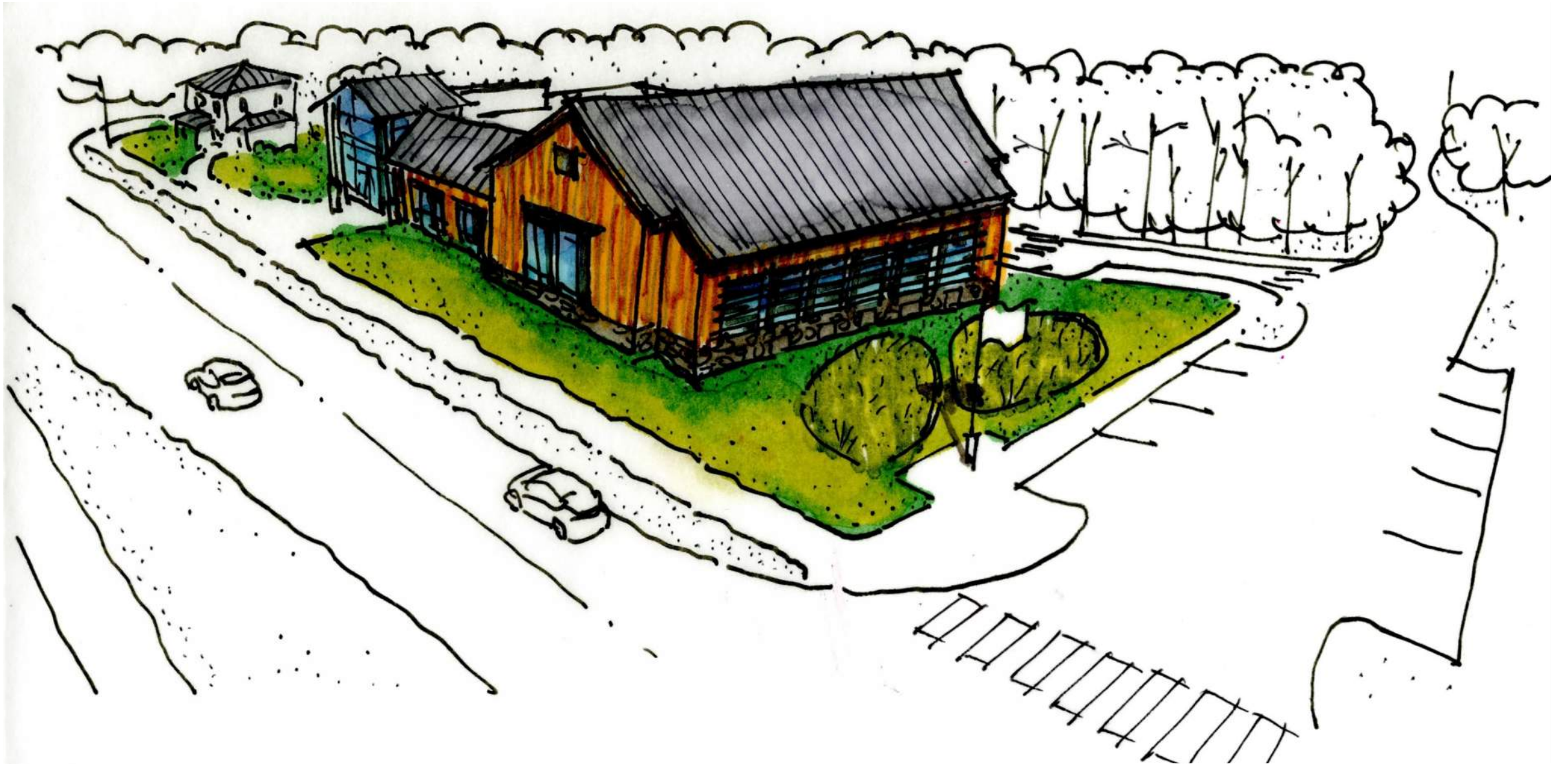
Stringtown Road Elevation

# 8. Preliminary Design Study – Option A



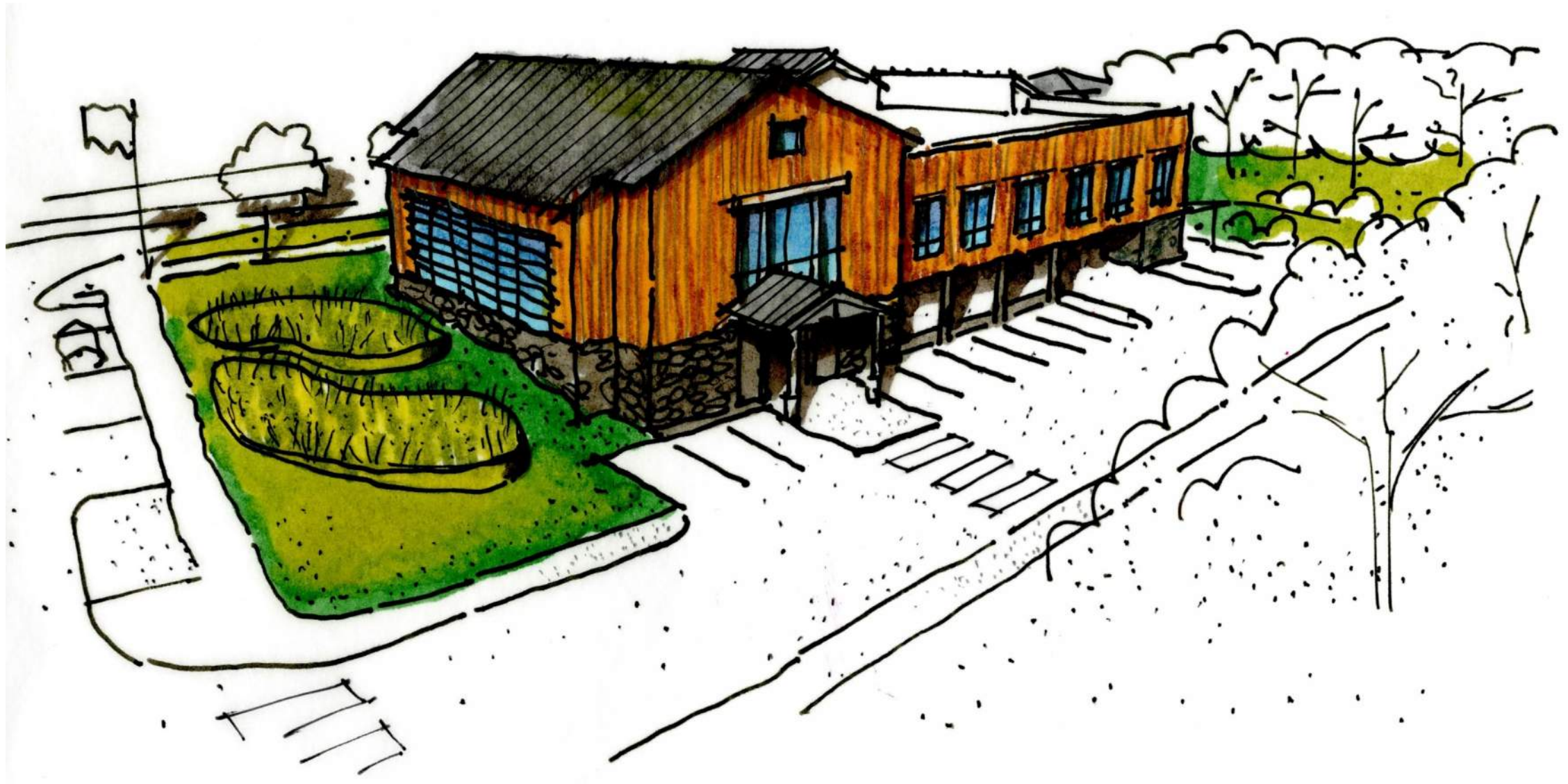
View From 355 and Stringtown Road

# 9. Preliminary Design Study – Option A



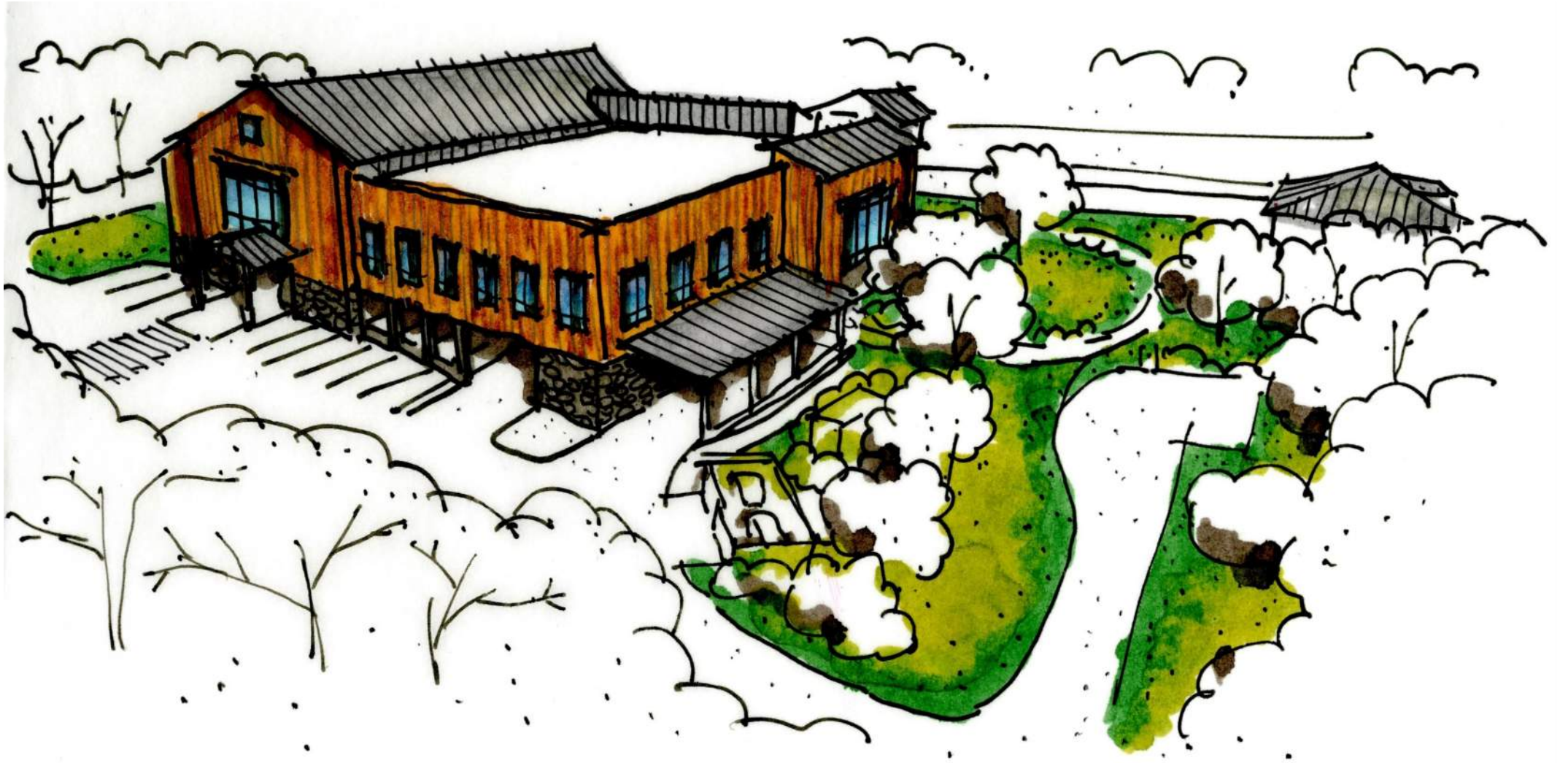
View From Stringtown Road and Clarksridge Road

# 10. Proposed Massing – Option A



View From and Clarksridge Road and Rear Access Road

# 11. Preliminary Design Study – Option A



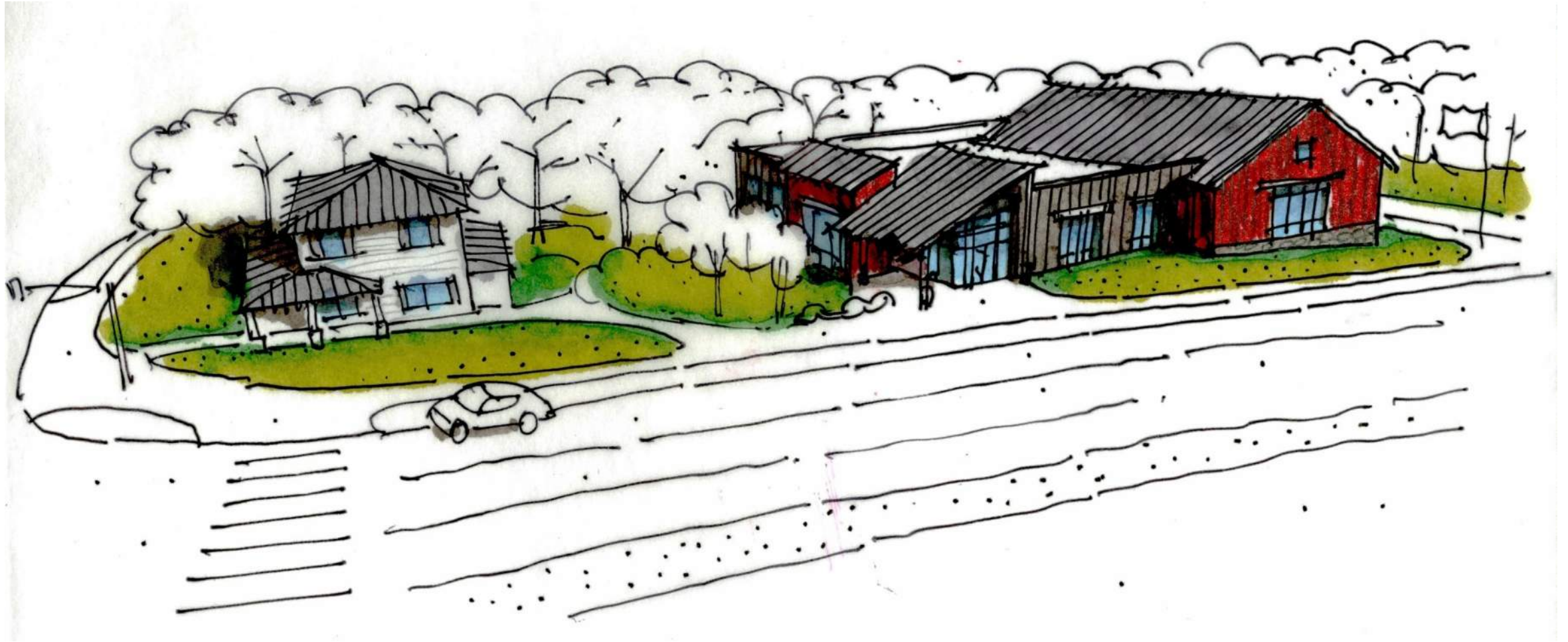
View From Rear Access Road

# 12. Preliminary Design Study – Option B



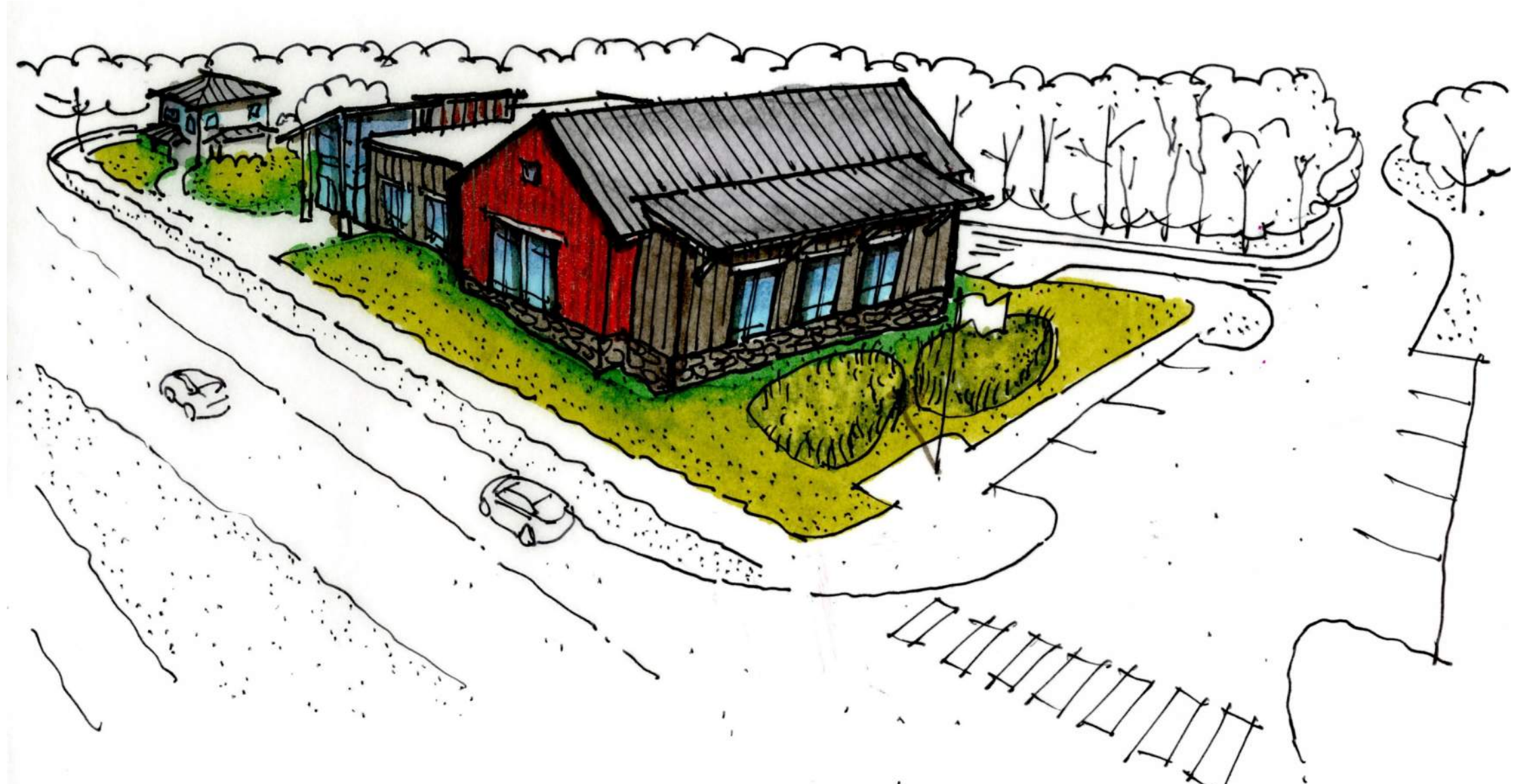
Stringtown Road Elevation

# 13. Preliminary Design Study – Option B



View From 355 and Stringtown Road

# 14. Preliminary Design Study – Option B



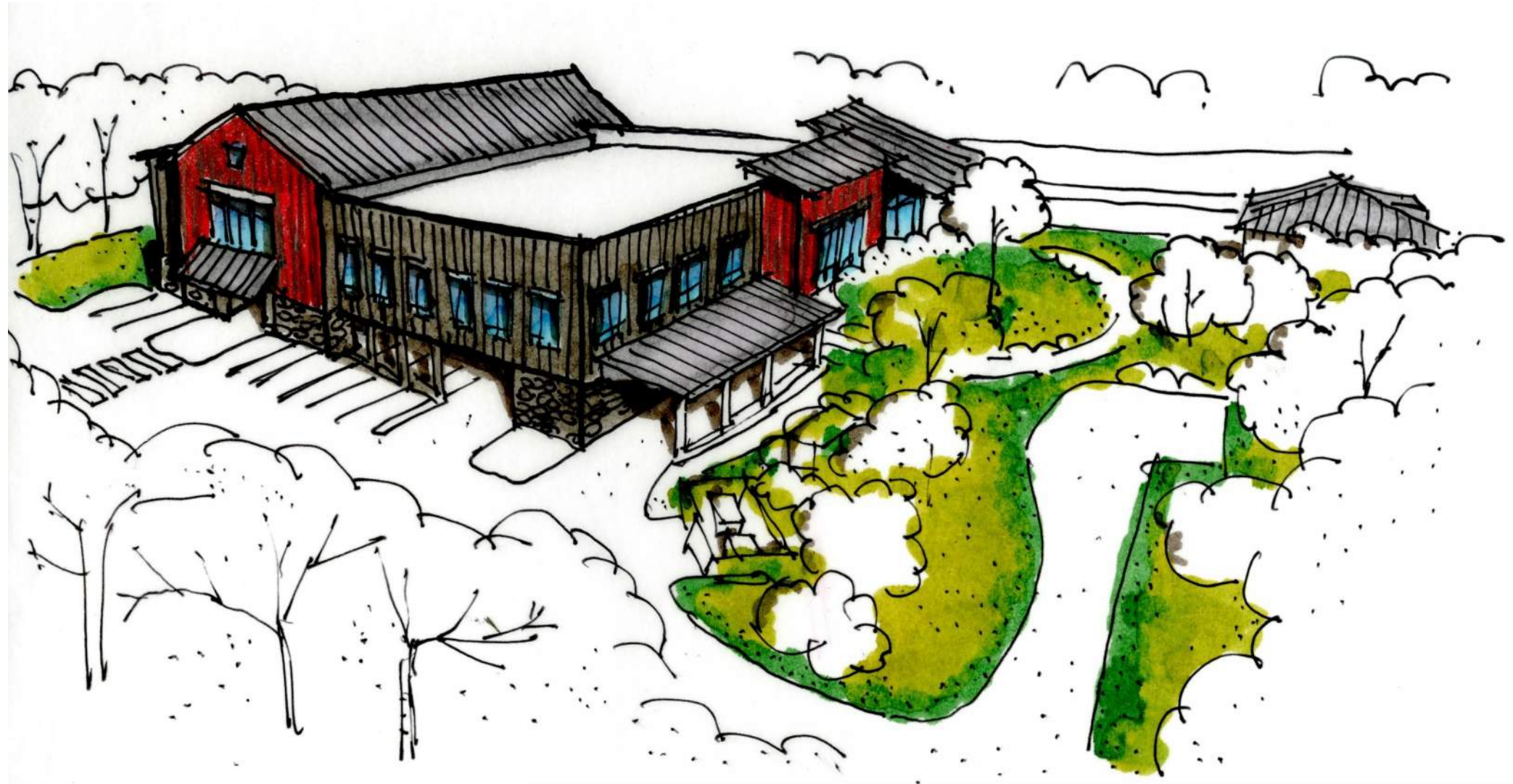
View From Stringtown Road and Clarksridge Road

# 15. Preliminary Design Study – Option B



View From and Clarksville Road and Rear Access Road

# 16. Preliminary Design Study – Option B



View From Rear Access Road

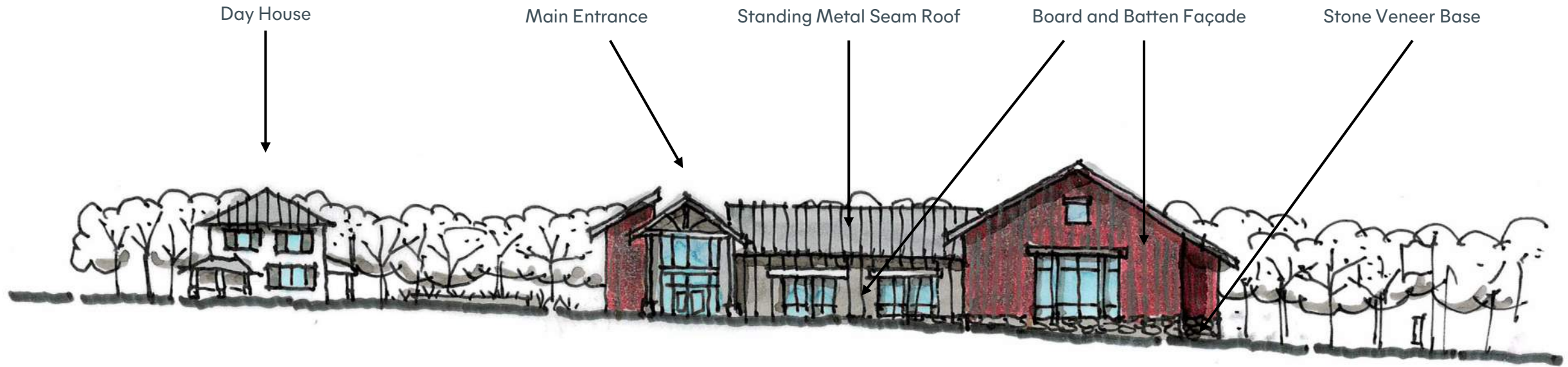
17.

## Proposed Design

# 18. Site Plan



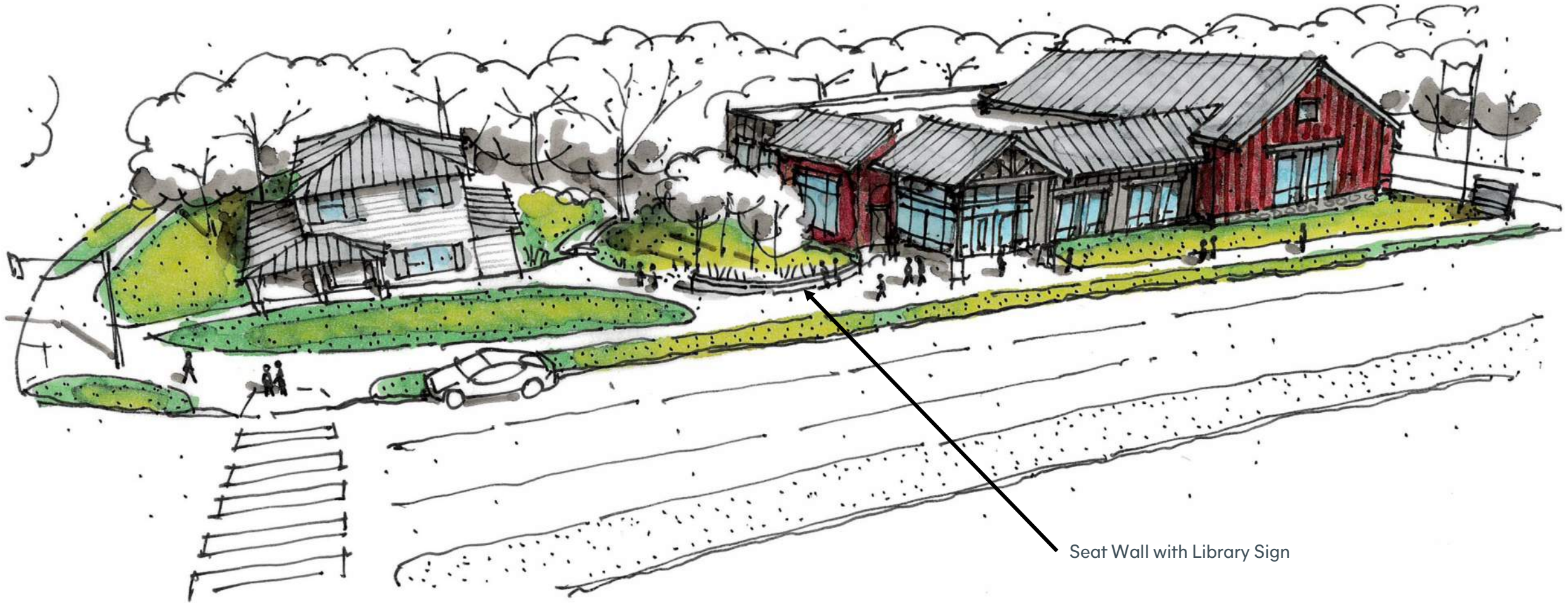
# 19. Proposed Design



Stringtown Road Elevation

NOTE: Street Trees are removed for clarity

# 20. Proposed Massing

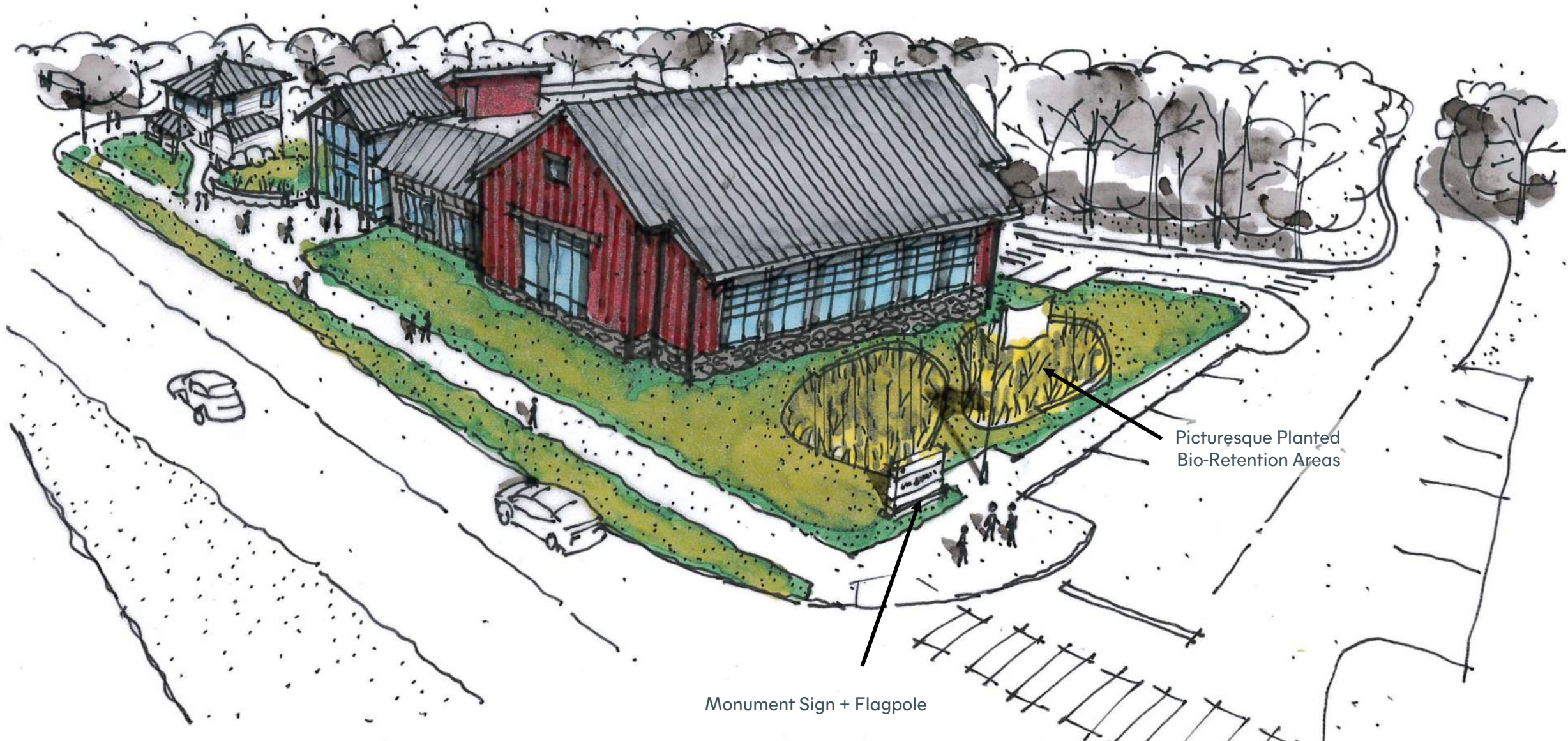


Seat Wall with Library Sign

NOTE: Street Trees are removed for clarity

View From 355 and Stringtown Road

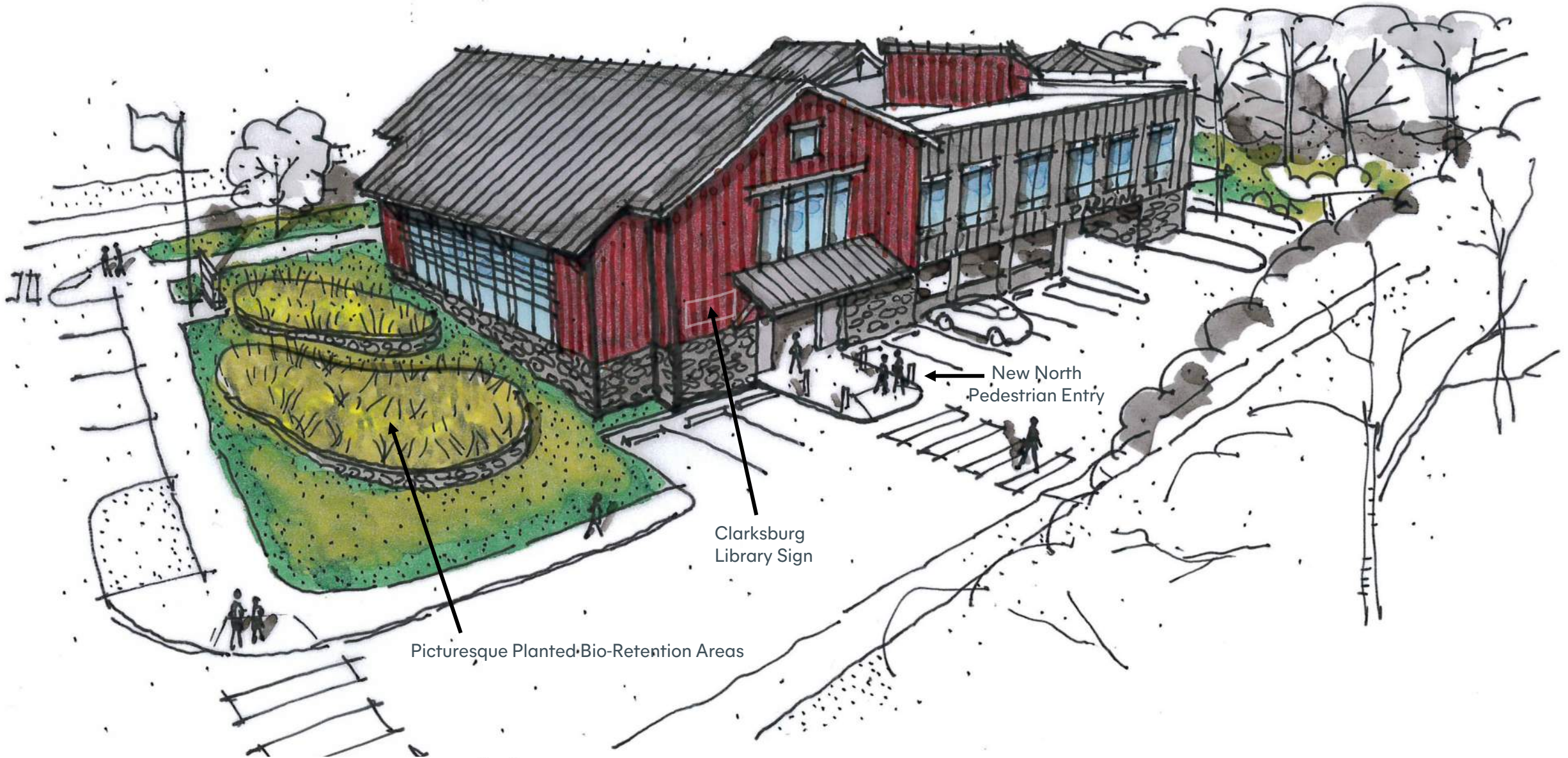
# 21. Proposed Massing



NOTE: Street Trees are removed for clarity

View From Stringtown Road and Clarksridge Road

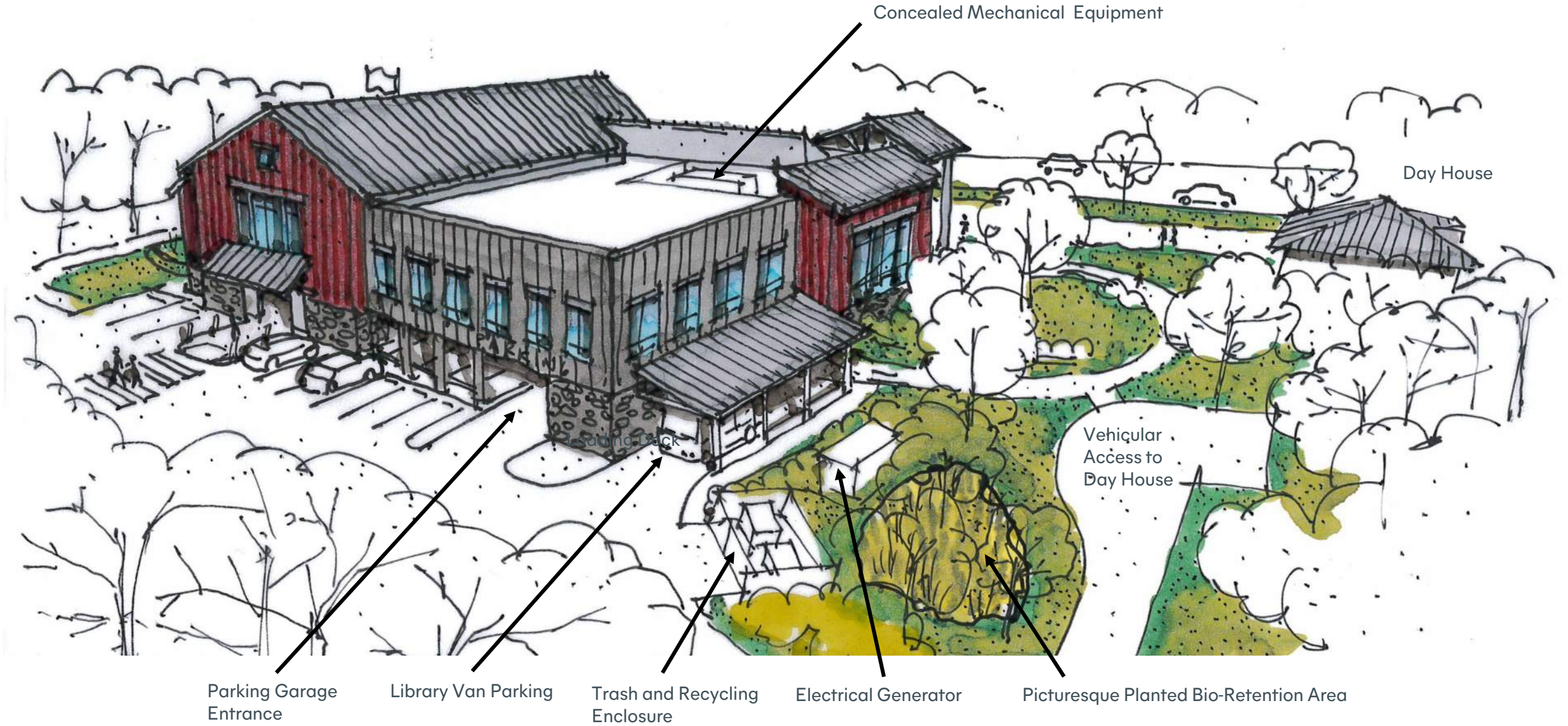
# 22. Proposed Massing



NOTE: Street Trees are removed for clarity

View From and Clarksridge Road and Rear Access Road

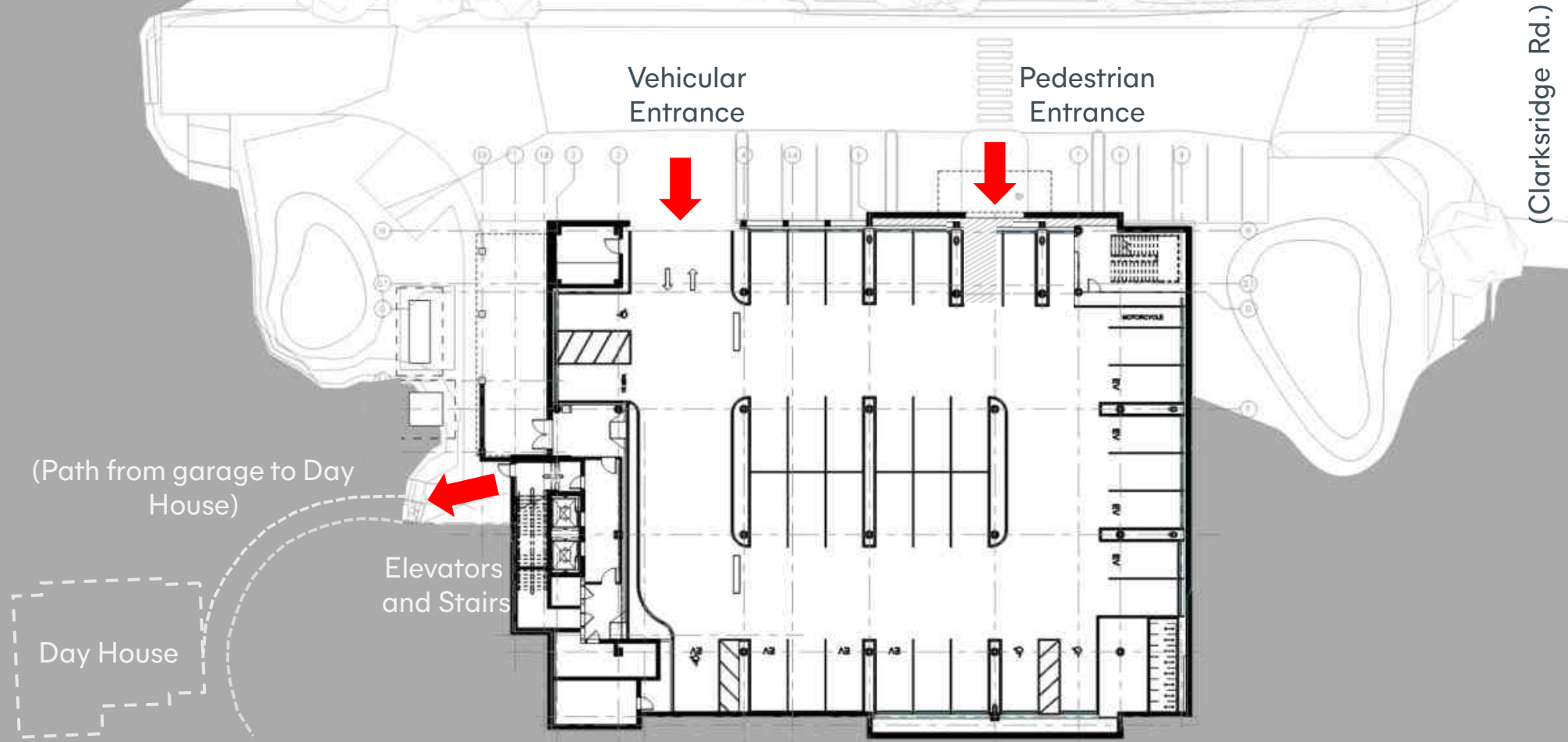
# 23. Proposed Massing



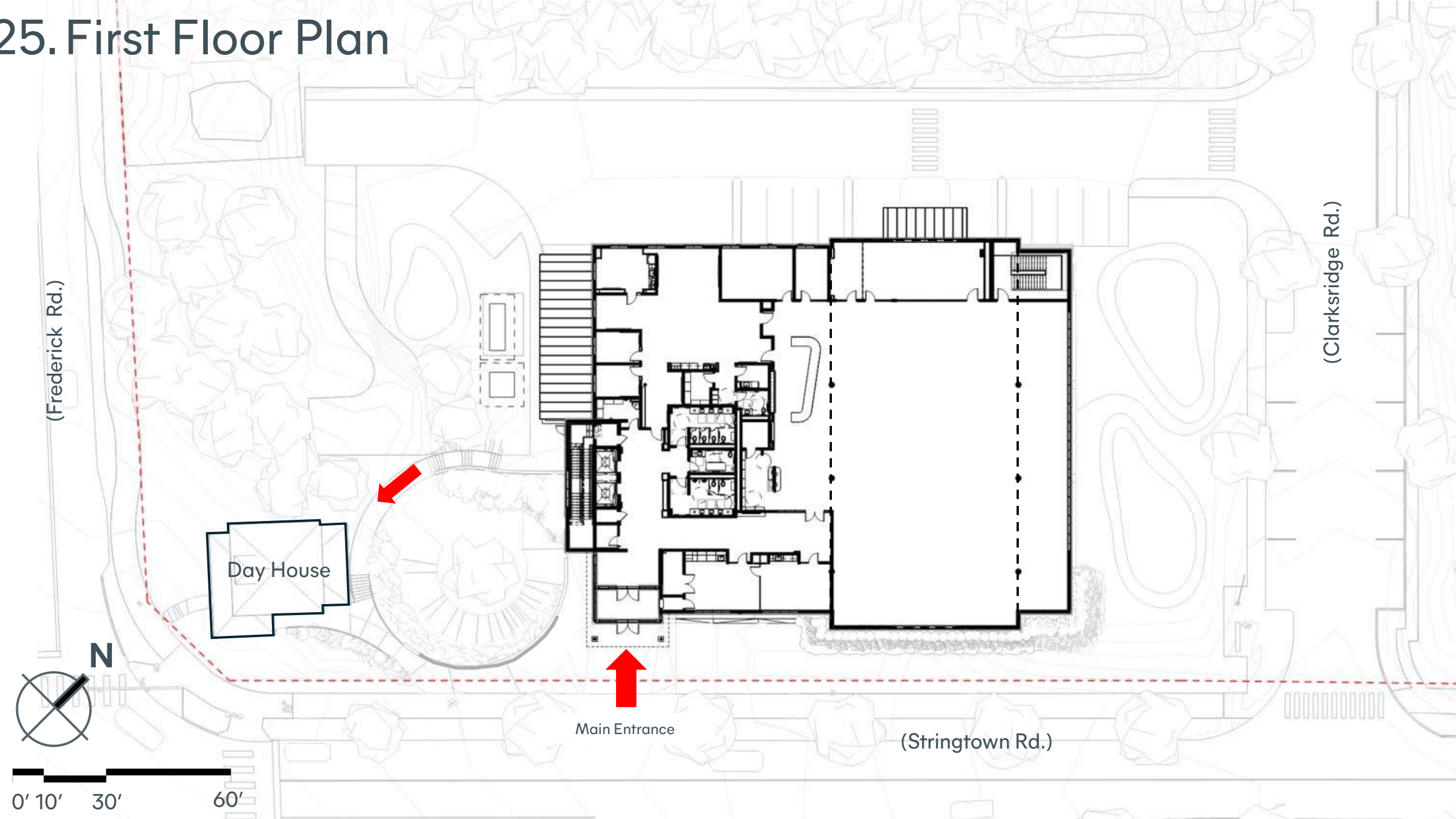
NOTE: Street Trees are removed for clarity

View From Rear Access Road

# 24. Garage Floor Plan



# 25. First Floor Plan



(Frederick Rd.)

(Clarkridge Rd.)

Day House

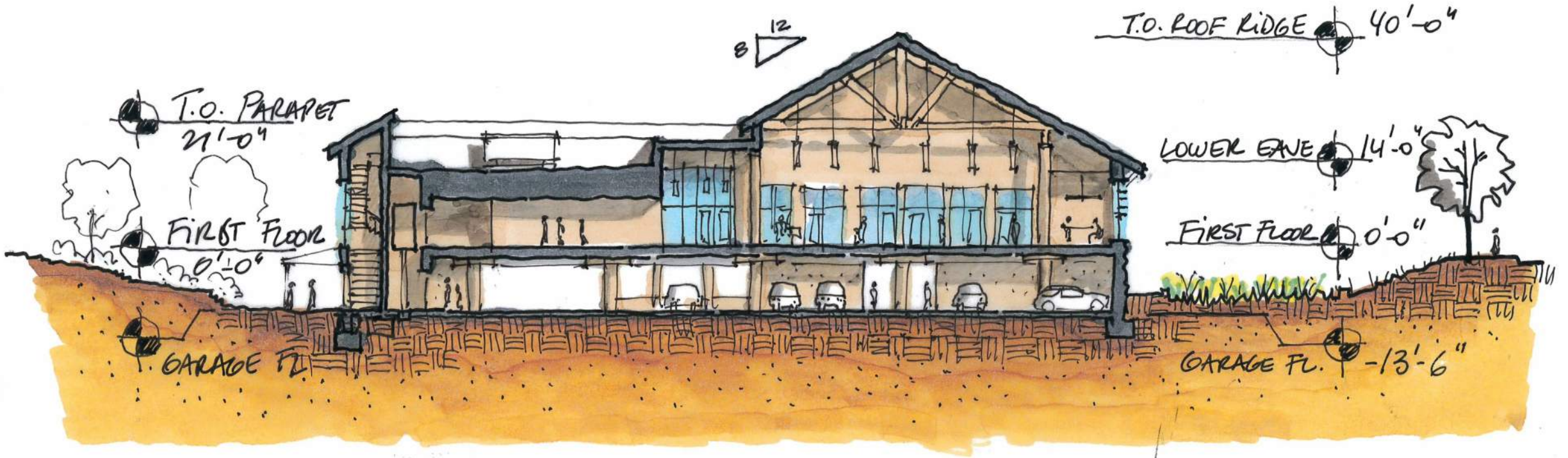
Main Entrance

(Stringtown Rd.)

N

0' 10' 30' 60'

# 26. Longitudinal Building Section



# 27. Exterior Plaza Materials



Natural "Ipe" Wood



Stone Veneer similar to El Dorado Stone®



Bioretention Area Plantings



Natural Landscaping with Native Maryland Plants



Concrete Walk

# 28. Exterior Cladding Materials



**Standing Seam Metal Roof**



**Exterior Steel + Downspouts and coping Color**



**Glazing + Metal Window Frame Color**



**Board and Batten Metal Panels**



**Stone Veneer similar to Eldorado Stone®**



# Thank You

