

Silver Spring Fiber Hub

Mandatory Referral Community Meeting

May 22, 2024; 7:00pm



Montgomery County DEPARTMENT OF GENERAL SERVICES



Montgomery County Department of General Services
Office of Planning and Development
101 Monroe Street, 9th Floor
Rockville, MD 20850
240-777-6071
OPD.DGS@montgomerycountymd.gov

Housekeeping

- **Attendance:** Please put your first and last name in the chat for record keeping.
- **Mute your mic:** Please mute your microphones at the beginning the presentation.
- **Meeting Recording:** Please note that the meeting is currently being recorded for the applicant's use only.
- **Chat Log:** Please note that the chat text will be saved for documentation of input and the applicant's reference.
- **Feedback:** We encourage feedback but ask that you hold it until after the presentation. The presentation will take approximately 15 minutes. Please enter your questions into the chat at any time and your questions will be addressed at the end.
- **Q/A Opportunity:** If you are unable to use the chat function and/or you would like to provide verbal feedback, you will have the opportunity to be unmuted at the end of the presentation.
- **Call-In Number:** If your computer does not have a microphone and you would like to provide comments during the meeting, you will need to use the call-in number 301-715-8592 Meeting ID: 369 975 5991 or type your comments in the meeting chat box.

Agenda

- Background
- Hub Details
- Site Overview and Details
- Architectural Elevations
- Next Steps
- Questions/Comments

Background

- Part of larger development agreement with United Therapeutics
- County's fiber hub located within public parking garage at 8700 Cameron Street must be relocated to allow for redevelopment
- Allows for a new, state-of-the-art fiber hub to better meet County needs
- Provides connectivity for critical County communications and services including
 - Internal access to County data systems
 - Down County telephone systems
 - Public Wi-Fi
 - Traffic signals

Hub Details

- 900 SF building that is 30'x30'
- Low voltage – same as the power to a house (120/208 service)
- Unoccupied
- Only accessed by County employees and contractors
- No plumbing

Site Aerial



Site Aerial



Site



Site Details

- Site is 15,360 SF
- Reducing imperviousness from 8,335 SF to 4,348 SF impervious.
 - Nearly **50% of current impervious area (3,987 SF) will be removed.**
- Project includes 2 parking spaces
 - Currently 22 marked parking spaces → **reduction in traffic**
- Access to the hub remains via Fairview Road
 - A portion of the pavement that makes up what is currently the exit will be removed.
 - That area will be planted with grass and new trees, providing **screening for the hub.**

Landscape Plan



LEGEND

	Asphalt paving
	Grass
	Allegheny spurge* (Pachysandra procumbens)
	Fiber hub building
	Generators
	Concrete pavement
	Existing trees
	Proposed trees
	8' Security Fence

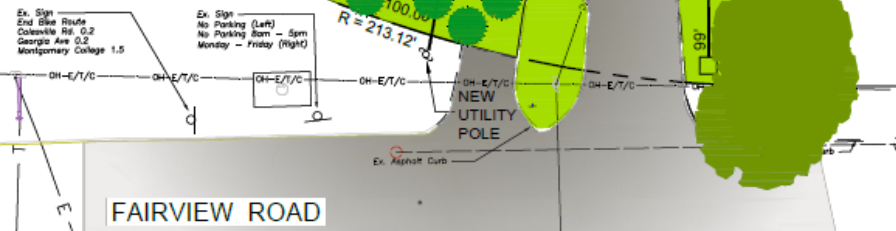


LANDSCAPE TREE SCHEDULE

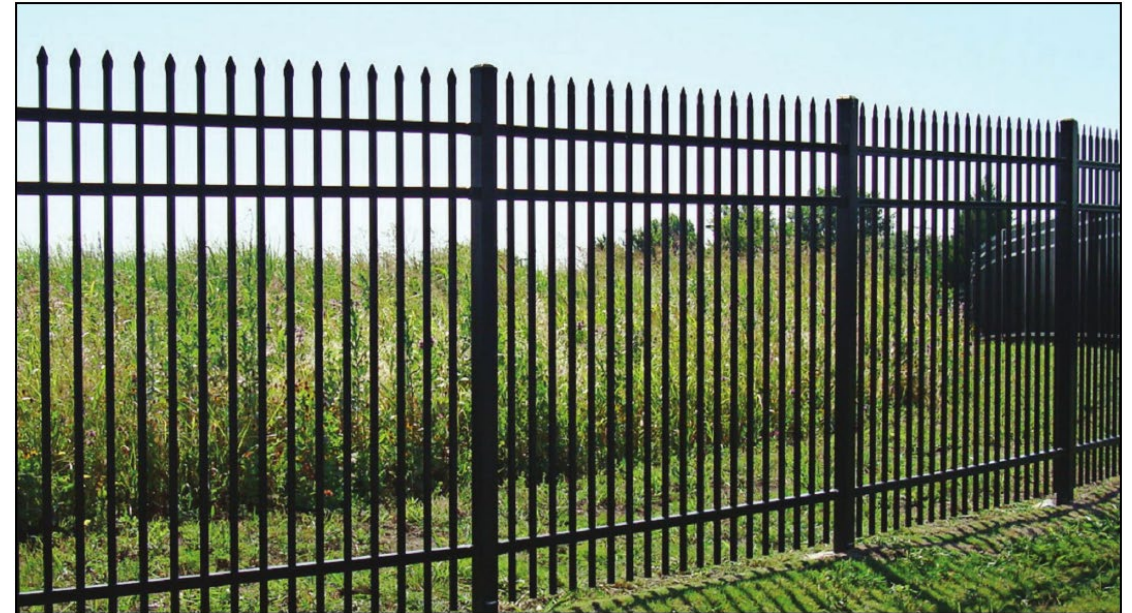
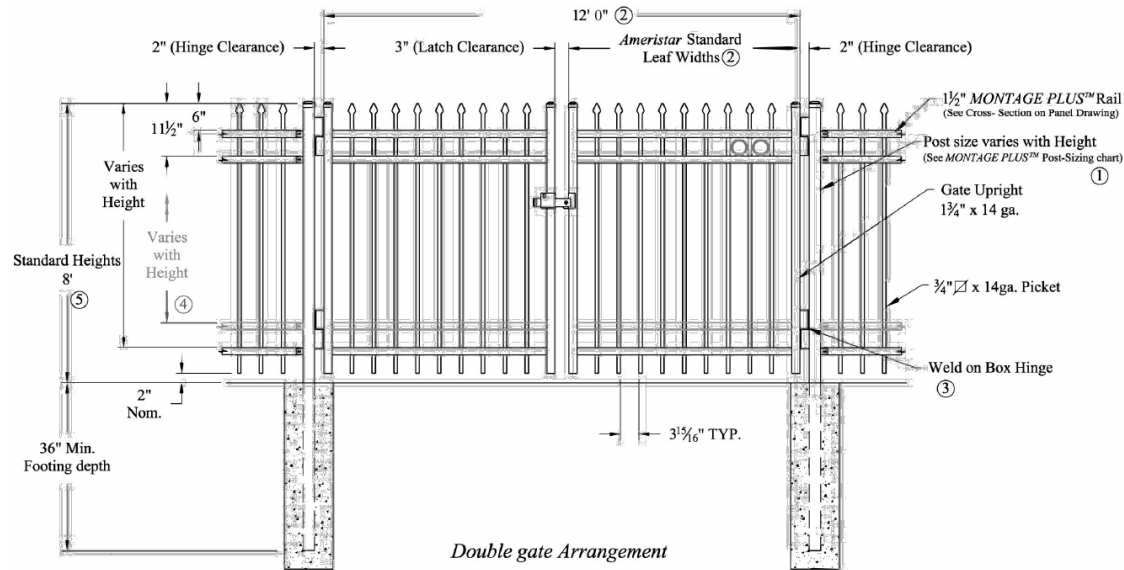
KEY	Botanical Name	Common Name	Qty.	Size (height'/caliper")	Type	Remarks	Canopy Size
	x Cupressocyparis leylandii	Leyland cypress	18	6-7'	B&B	8-10' spacing	Small - Medium

LANDSCAPE GROUND COVER SCHEDULE

KEY	Botanical Name	Common Name	Area Planted	Spacing	Type of Spacing	# of Plants
See Legend	Pachysandra procumbens	Allegheny spurge	8860	12"	Triangular	10,200



Gate and Fence Detail



Lighting Information

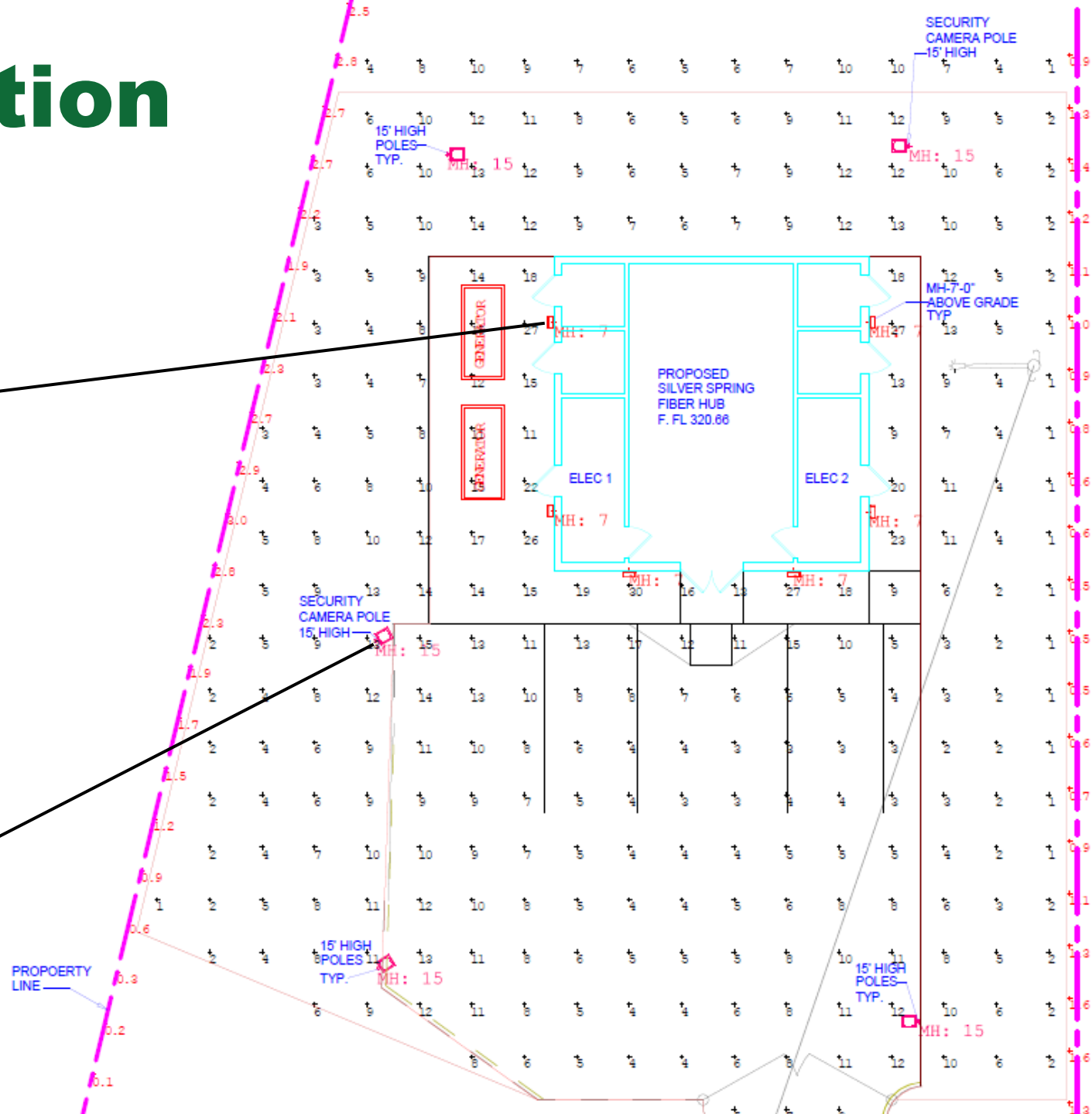


TYPE B



Medium Size: 100W/140W/180W

TYPE C

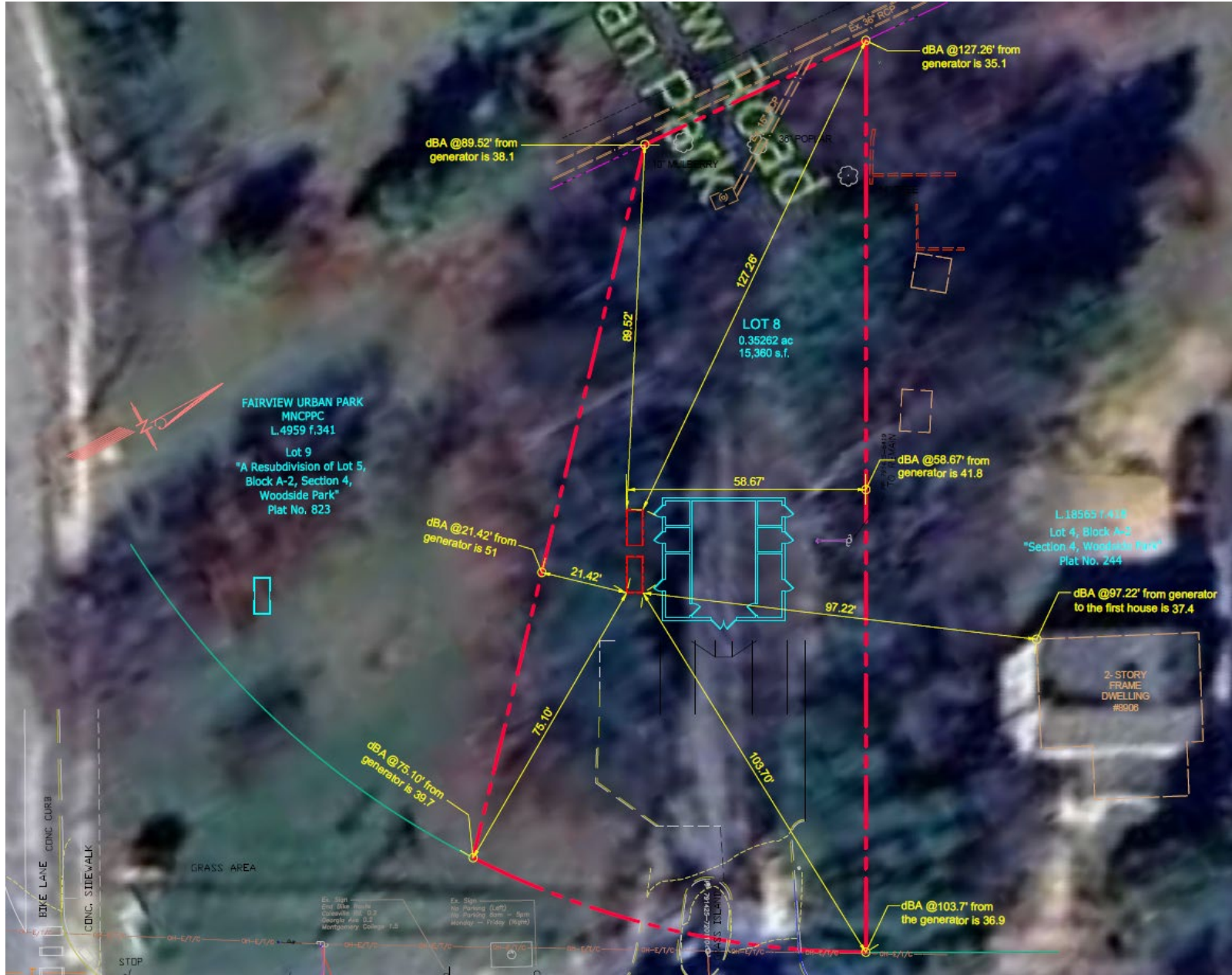


Emergency Generators

- For use during power outage
- Generators will need to be exercised weekly
- The generators incorporate multiple noise-reducing approaches, including:
 - Foam insulation
 - Exhaust hood
 - Sound baffles
 - Hospital silencer



Generator Noise Calculations



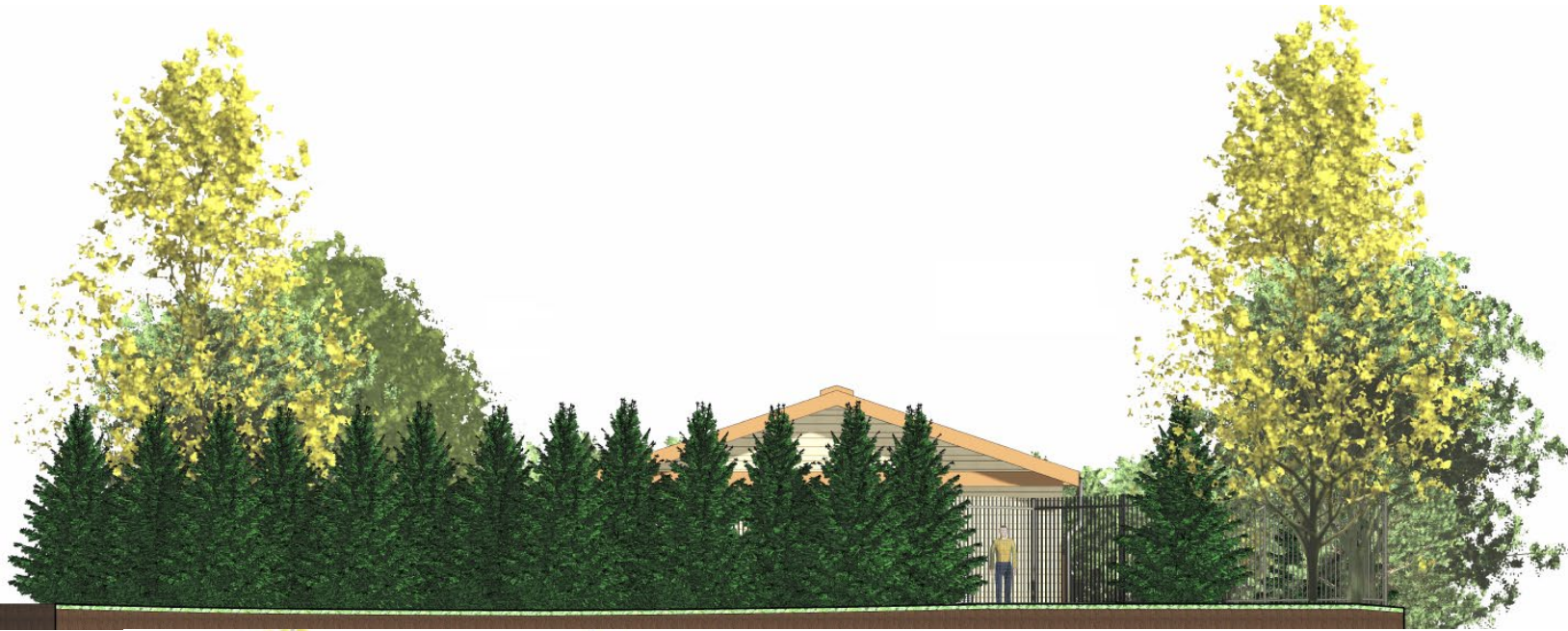
Neighborhood Context



Exterior Elevations (Shiplap) – Year 0



Exterior Elevations (Shiplap) – Year 2-3



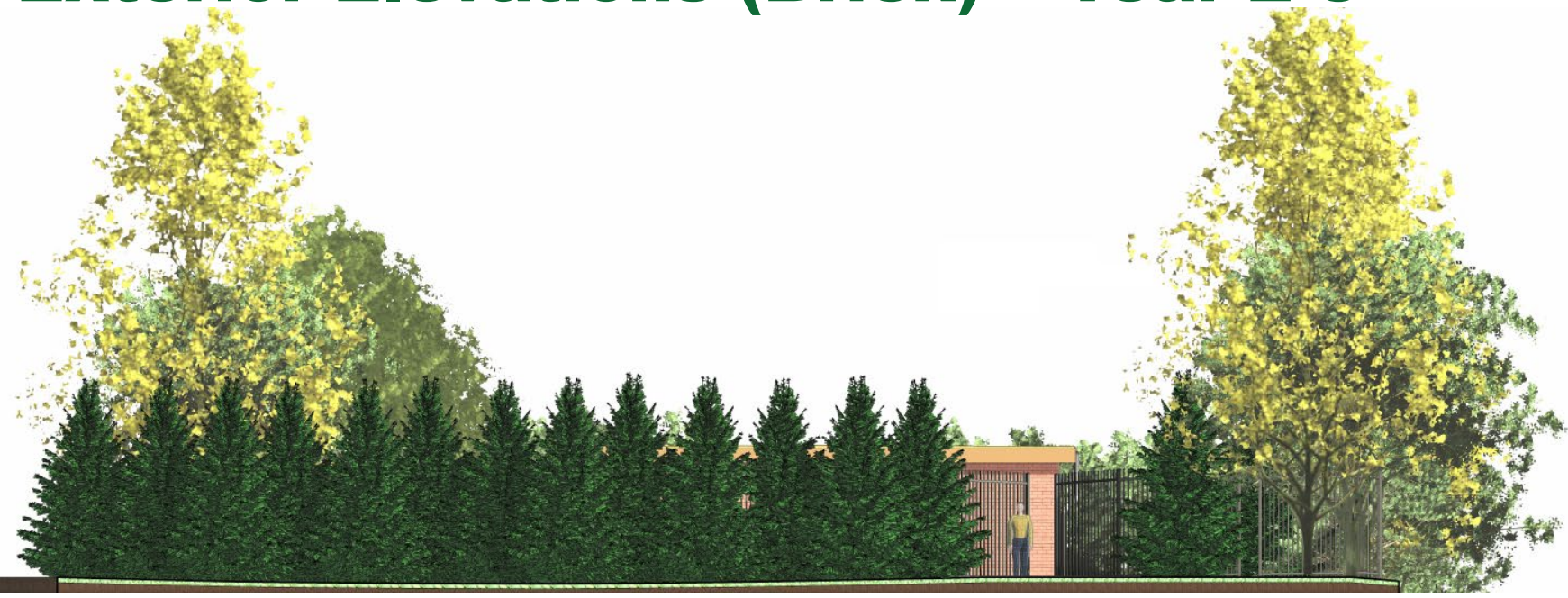
Exterior Elevations (Shiplap) – Perspective Year 0



Exterior Elevations (Brick) – Year 0



Exterior Elevations (Brick) – Year 2-3



Exterior Elevations (Brick) – Perspective Year 0



Next Steps

- M-NCPPC review – Summer 2024
- Construction start* – Fall 2024
- Construction end* – Spring 2025

*Base building construction only. Montgomery County Department of Technology & Enterprise Business Solutions (TEBS) to complete fit out and commission post construction – anticipated 6 months timeline

Questions? Comments?

Fiber Hub Mandatory Referral:

OPD.DGS@MontgomeryCountyMD.gov

Questions about United Therapeutics project:

community@UTSilverSpring.com



Montgomery County DEPARTMENT OF GENERAL SERVICES



Montgomery County Department of General Services
Office of Planning and Development
101 Monroe Street, 9th Floor
Rockville, MD 20850
240-777-6071
OPD.DGS@montgomerycountymd.gov