



**MONTGOMERY COUNTY MARYLAND**

DEPARTMENT OF GENERAL SERVICES  
DIVISION OF BUILDING DESIGN AND CONSTRUCTION  
101 MONROE STREET 11TH FLOOR  
ROCKVILLE, MARYLAND 20850

**Silver Spring Library Building  
IFB # 1019962  
Bid Submission  
August 20, 2012**

900 Wayne Avenue  
Silver Spring, Maryland 20910

**The Lukmire Partnership**

Architecture  
Planning  
Interior Design

2700 South Quincy Street  
Suite 300  
Arlington, VA 22206  
703-998-0101  
fax 703-998-7798

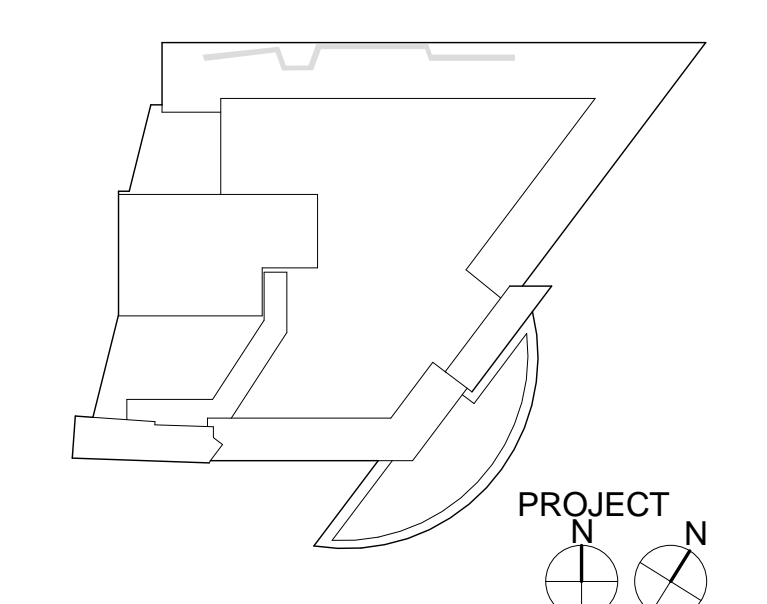
Professional Certification.  
I certify that these documents were prepared or approved by me, and that I am a duly licensed architect under the laws of the state of Maryland, license number **7545-R**, expiration date **3/16/13**.

REGISTRATION:

NO	DATE	ISSUE DESCRIPTION
4	4/2/2013	ASI 010 - Section 5/A-377 added
5	4/2/2013	ASI 010 - Revise conc wall adjacent to stair #1
6	4/23/2013	ASI 020 - Rough in locations provided for basement toilet fixtures
7	6/21/2013	CCD 010 - revise doors and door hardware

A/E PROJECT NO: 13230  
DRAWN BY: BFE  
CHECKED BY: RZP

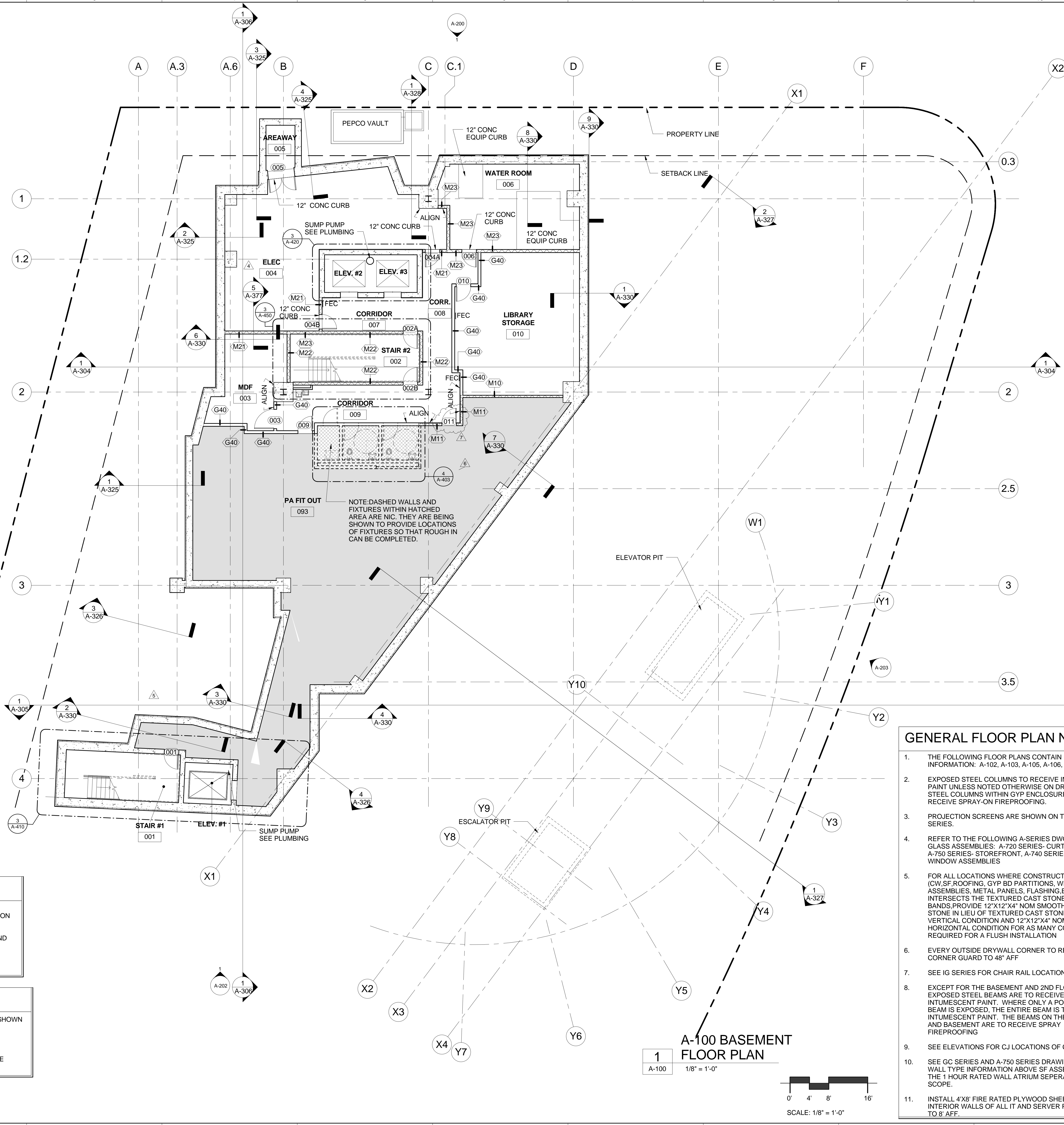
KEY PLAN



SHEET TITLE:  
**BASEMENT FLOOR PLAN**

SHEET NUMBER:  
**A-100**

Original drawing is 30" x 42". Scale varies accordingly if reduced.  
6/20/2013 12:45:01 PM



- BASEMENT PLAN NOTES**
- SEE PLUMB / STRUC DRAWINGS AND A-100F FOR UNDERSLAB & FOUNDATION DRAINAGE INFORMATION
  - ELEC 004 AND WATER ROOM 005 HAVE INTERIOR WATERPROOFING DESIGN. SLOPE FLOORS AROUND CONC CURBS. SEE STRUC DRAWINGS AND DOOR DETAILS
  - SEE A-110 FOR DIMENSIONS OF CONC CURBS

- PLAN SYMBOLS**
- TACKBOARD, MARKERBOARD, LENGTHS AS SHOWN ON PLANS. SEE 9/A-601 FOR DETAILS.
  - WALL MOUNTED FIRE EXTINGUISHER- SEE SPECIFICATION, & DETAIL 6/A-601
  - RECESSED FIRE EXTINGUISHER CABINET- SEE SPECIFICATION, & DETAIL 6/A-601

- GENERAL FLOOR PLAN NOTES**
- THE FOLLOWING FLOOR PLANS CONTAIN ROOF PLAN INFORMATION: A-102, A-103, A-105, A-106, & A-107.
  - EXPOSED STEEL COLUMNS TO RECEIVE INTUMESCENT PAINT UNLESS NOTED OTHERWISE ON DRAWINGS. STEEL COLUMNS WITHIN GYP ENCLOSURES TO RECEIVE SPRAY-ON FIREPROOFING.
  - PROJECTION SCREENS ARE SHOWN ON THE A- 120 SERIES.
  - REFER TO THE FOLLOWING A-SERIES DWGS FOR GLASS ASSEMBLIES: A-720 SERIES- CURTAIN WALL, A-750 SERIES- STOREFRONT, A-740 SERIES-ALL GLASS WINDOW ASSEMBLIES
  - FOR ALL LOCATIONS WHERE CONSTRUCTION (CW,SF,ROOFING, GYP BD PARTITIONS, WINDOW ASSEMBLIES, METAL PANELS, FLASHING,ETC) INTERSECTS THE TEXTURED CAST STONE BANDS PROVIDE 12"X12"X4" NOM SMOOTH CAST STONE IN LIEU OF TEXTURED CAST STONE IN A VERTICAL CONDITION AND 12"X12"X4" NOM IN A HORIZONTAL CONDITION FOR AS MANY COURSES AS REQUIRED FOR A FLUSH INSTALLATION
  - EVERY OUTSIDE DRYWALL CORNER TO RECEIVE A SS CORNER GUARD TO 48" AFF
  - SEE IG SERIES FOR CHAIR RAIL LOCATIONS
  - EXCEPT FOR THE BASEMENT AND 2ND FLOOR, ALL EXPOSED STEEL BEAMS ARE TO RECEIVE INTUMESCENT PAINT. WHERE ONLY A PORTION OF A BEAM IS EXPOSED, THE ENTIRE BEAM IS TO RECEIVE INTUMESCENT PAINT. THE BEAMS ON THE 2ND FLOOR AND BASEMENT ARE TO RECEIVE SPRAY FIREPROOFING
  - SEE ELEVATIONS FOR CJ LOCATIONS OF CAST STONE
  - SEE GC SERIES AND A-750 SERIES DRAWINGS FOR WALL TYPE INFORMATION ABOVE SF ASSEMBLIES FOR THE 1 HOUR RATED WALL ATRIUM SEPERATION WALL SCOPE.
  - INSTALL 4'X8' FIRE RATED PLYWOOD SHEETS ON ALL INTERIOR WALLS OF ALL IT AND SERVER ROOMS UP TO 8' AFF.

**A-100 BASEMENT FLOOR PLAN**  
1  
A-100 1/8" = 1'-0"  
SCALE: 1/8" = 1'-0"