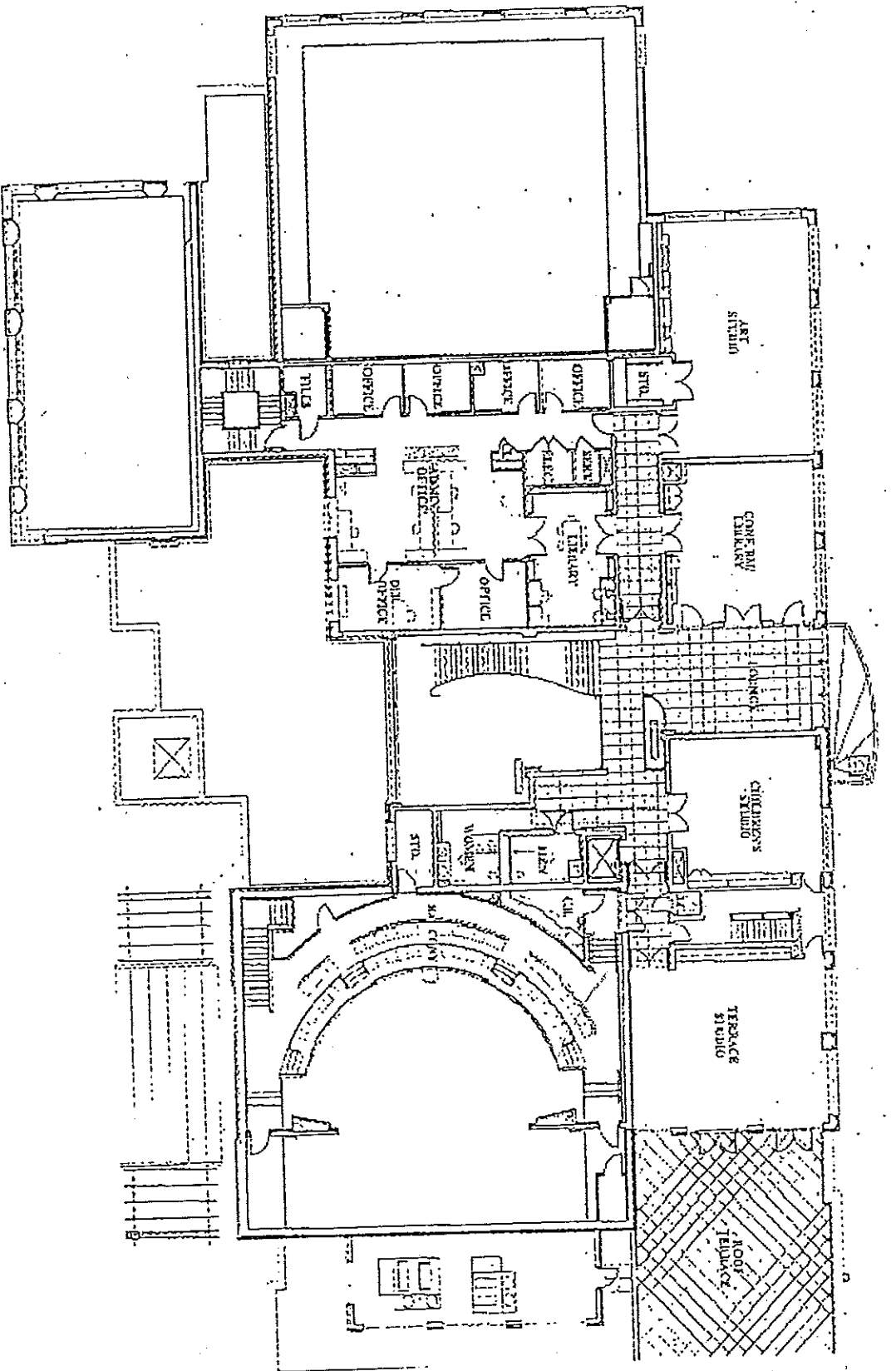


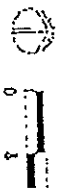
SITE PLAN

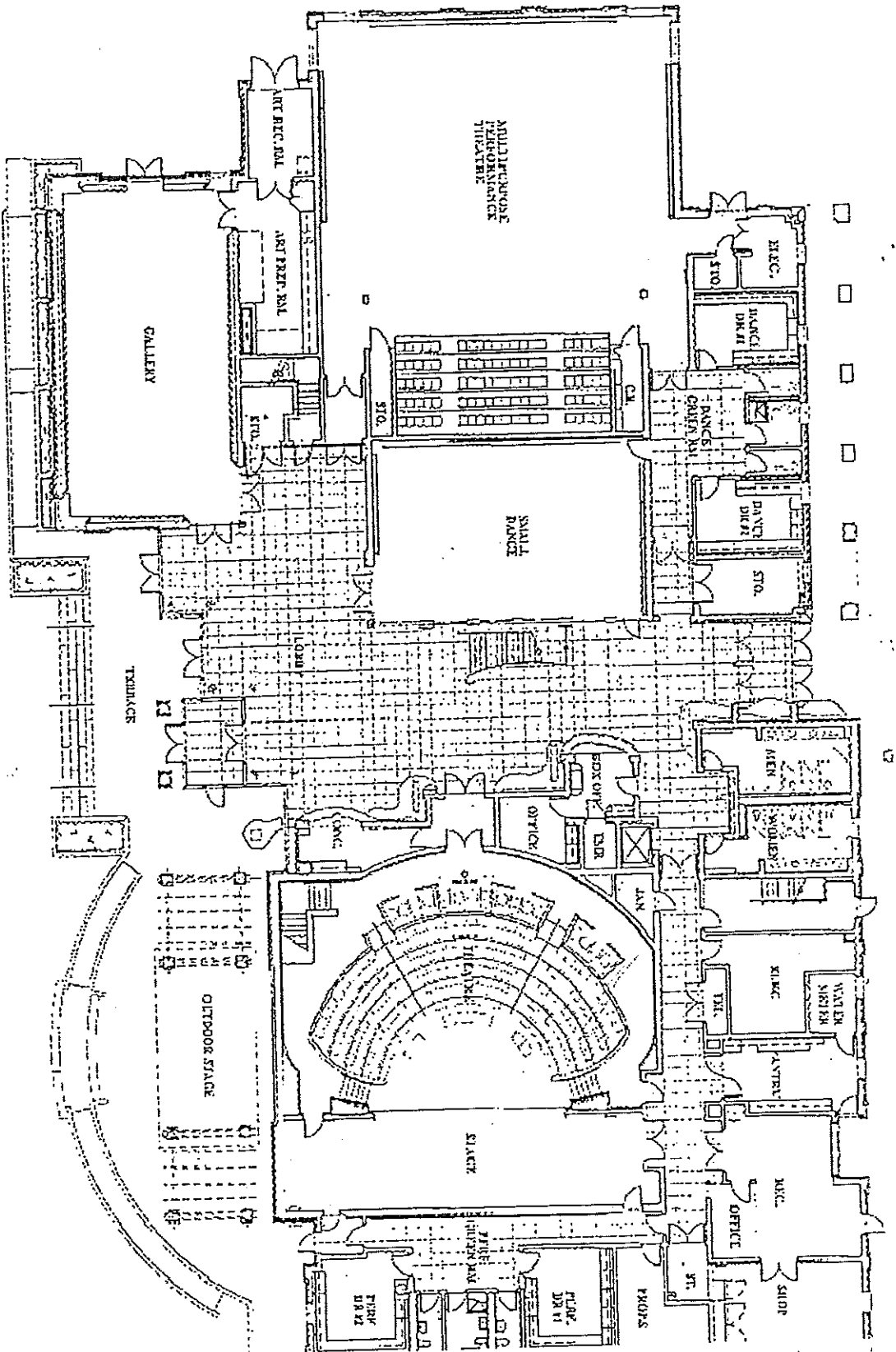
Exhibit A-1



**RTA**  
 Real Estate Architects  
 Washington, D.C.

**SECOND FLOOR PLAN**  
**BLACKROCK CENTER FOR THE ARTS**  
 GELMANTOWN, MARYLAND





Exh. b. 1 A-2

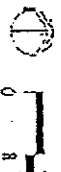


Dewar-Cridley Architects  
Washington, D.C.

# BLACKROCK CENTER FOR THE ARTS

## FIRST FLOOR PLAN

GERRANTOWN, MARYLAND





## PROGRAMS & SERVICES

The mission of BlackRock Center for the Arts is to provide quality performing, visual, and arts education programs for the benefit of the residents of Germantown and of the surrounding Montgomery County region. BlackRock serves as an arts resource center for the community by engaging residents in the arts through its presenting and education programs, and through community participation in its facilities. BlackRock's *program goals* are to: (1) Provide a focal point for the civic life of Germantown and the upcounty area by creating a sense of place and community pride; (2) Develop balanced and challenging programs that serve the needs and interests of the population; and (3) Provide engaging aesthetic and educational opportunities for members of the community.

BlackRock Center for the Arts serves an ethnically, racially, physically and economically diverse surrounding community in a number of exciting ways. BlackRock houses three performing stages including: the 210- seat main theater presenting musical and theatrical performances and the "blackbox" studio theater that has many uses from serving as an educational classroom for dance courses to presenting coffee houses or cabarets performances. Finally, BlackRock's outdoor stage hosts a summer concert series, as well as other events to be planned, for the community.

Attached hereto, by way of example but not limitation is a description of programs for FY 2004.

BlackRock Center for the Arts  
Fixed Asset Listing  
as of 6/18/03

<u>Asset Classification</u>	<u>Attached</u>	<u>Not Attached</u>	<u>Totals</u>
Furniture & Fixtures	27,860.00	170,362.83	198,222.83
Stage Equipment	20,328.98	102,207.34	122,536.32
Computer Equipment	0.00	41,652.75	41,652.75
Software	<u>0.00</u>	<u>16,988.05</u>	<u>16,988.05</u>
Totals	<u><u>48,188.98</u></u>	<u><u>331,210.97</u></u>	<u><u>379,399.95</u></u>

Exhibit A

BlackRock Center for the Arts  
Fixed Assets

Date	Num	A/NA	Name	QTY	Memo	Amount	Balance
1314 - CIP-FF&E							
01/09/2003		A	TJ Distributors	194	Hussey Concordia Steel chairs & Installation Main Stage	27,860.00	27,860.00
03/10/2003	Inv #010597	NA	Arbutus Refrigeration	1	Manitowoc ice machine w/everpure water filter	2,000.00	29,860.00
10/08/2002	Reimburse	NA	Balcombe, Marilyn	12	Cheap Joes-Premeir Easals	719.88	30,579.88
10/08/2002	Reimburse	NA	Balcombe, Marilyn	1	Arakawa-Art Hanging Systems	1,872.76	32,452.64
11/27/2002	Reimburse	NA	Balcombe, Marilyn	4	Wenger - 3 Musician chairs, 1 Cello Chair	721.00	33,173.64
11/27/2002	Reimburse	NA	Balcombe, Marilyn	2	Office chairs Unlimited-Teardrop drafting Chair	225.98	33,399.62
11/27/2002	Reimburse	NA	Balcombe, Marilyn	2	Office chairs Unlimited-deluxe task	185.98	33,585.60
02/12/2003	Reimburse	NA	Balcombe, Marilyn	12	Cheap Joes-Premeir Easals	659.40	34,245.00
03/21/2003	Reimburse	NA	Balcombe, Marilyn	1	Sears Stove for BR Pantry	402.98	34,647.98
03/21/2003	Reimburse	NA	Balcombe, Marilyn	1	Sears Dishwasher for BR Pantry	259.99	34,907.
06/05/2003	Reimburse	NA	Balcombe, Marilyn	1	Dick Blick Saturn Tensor 18 drying rack, children's studio	398.02	35,305.99
01/08/2003	Reimburse	NA	Bialik, Alan	1	Refrigerator	449.88	35,755.87
08/30/2002		NA	Chil con Cases Inc.	5	Audio cases	2,010.00	37,765.87
09/27/2002		NA	Contract Furniture Options, Inc.	56 Pieces	Lobby and Lounge furniture and trash receptacles	23,205.52	60,971.39
09/10/2002	104	NA	Cummings, Bill	12	taborets	1,080.00	62,051.39
02/07/2003	108	NA	Cummings, Bill	12	Gallery pedestals	2,670.00	64,721.39
12/02/2002	Reimburse	NA	Ellison, Barbara	Various	Hangers for coat room	40.31	64,761.70
09/17/2002	1436	NA	Entertainment Storage, Inc	1	Hangers for theater thrust	7,500.00	72,261.70
09/17/2002	1435	NA	Entertainment Storage, Inc	1	Apron skirting for theater thrust	2,300.00	74,561.70
11/27/2002	5126	NA	Fastsigns	12	6 roll Dance floor rack	2,190.00	76,751.70
12/10/2002		NA	Fastsigns	1	Boulevard Banners	186.70	76,938.40
10/04/2002		NA	Fincraft Building Contractors, Inc.	2	Ticket sign, stand	400.00	77,338.40
01/29/2003	1700756	NA	Full Compass Systems, Ltd.	1	Wood Model stands	455.40	77,794.80
10/07/2002	CO2003-0032	NA	Gilbert's Inc.	24	Floor cabinet	1,375.20	79,170.00
01/15/2003		NA	Hillel Abrams In-Kind Furniture	1	30" round base cabaret tables	1,000.00	80,170.00
01/15/2003		NA	Hillel Abrams In-Kind Furniture	8	Conference room tables	2,000.00	82,170.00
01/15/2003		NA	Hillel Abrams In-Kind Furniture	1	8 Chairs	400.00	82,570.00
01/15/2003		NA	Hillel Abrams In-Kind Furniture	1	Credenza	100.00	82,670.
01/15/2003		NA	Hillel Abrams In-Kind Furniture	1	Book Shelves	100.00	82,770.00
01/15/2003		NA	Hillel Abrams In-Kind Furniture	1	Love Seat/Chair	100.00	82,870.00
01/15/2003		NA	Hillel Abrams In-Kind Furniture	2	Model Chairs	100.00	82,970.00
01/15/2003		NA	Hillel Abrams In-Kind Furniture	2	Filing Cabinets	100.00	83,070.00
01/15/2003		NA	Hillel Abrams In-Kind Furniture	1	Board Room White Board	50.00	83,020.00
07/14/1997	18019	NA	Hon	2	Filing Cabinets	252.00	83,272.00
05/22/2002		NA	Interconnect Services, Inc.	1	Vodavi Telephone System- 26 phones including console	12,405.44	95,677.44
11/04/2002	2718	NA	Interior Connections	5	Conference room United Alpha Serie Sled-based chair w/Cantilever arms, Fabric grade 2	770.00	96,447.44
01/15/2003		NA	John Hopkins In-Kind Furniture	6	TV Carts	300.00	96,747.44
01/15/2003		NA	John Hopkins In-Kind Furniture	2	Overhead Projectors	100.00	96,847.44
01/15/2003		NA	John Hopkins in-Kind Furniture	2	HP Laser Jet 4 Printers	200.00	97,047.44

Exhibit C-1

BlackRock Center for the Arts  
Fixed Assets

Date	Num	A/NA	Name	QTY	Memo	Amount	Balance
01/15/2003		NA	John Hopkins In-Kind Furniture	1	Proximal LCD Projector	150.00	97,187.44
					130 Chairs Dance Theater w/ 9 Dollies, 42 Chairs Terrace Studio & 22 Wet Studio		
09/17/2002	21572	NA	Krueger International, Inc.	194	Conference room tables	33,040.95	130,238.39
09/23/2002		NA	Krueger International, Inc.	12	Conference room tables	3,459.84	133,698.23
09/30/2002		NA	Krueger International, Inc.	15	Conference room tables	3,945.60	137,643.83
01/02/2003		NA	Manugistics In-Kind Furniture	11	Desks	11,000.00	148,643.83
01/02/2003		NA	Manugistics In-Kind Furniture	3	Credna/Armoires	1,200.00	149,843.83
01/02/2003		NA	Manugistics In-Kind Furniture	25	Chairs	6,250.00	156,093.83
01/02/2003		NA	Manugistics In-Kind Furniture	1	Conf Room Table	1,000.00	157,093.83
01/02/2003		NA	Manugistics In-Kind Furniture	8	Conf Room Chairs	2,000.00	159,093.83
01/02/2003		NA	Manugistics In-Kind Furniture	1	Conf Room Credenza	1,000.00	160,093.83
01/02/2003		NA	Manugistics In-Kind Furniture	9	Book Shelves	2,700.00	162,793.83
01/02/2003		NA	Manugistics In-Kind Furniture	6	White Board	150.00	162,943.83
01/02/2003		NA	Manugistics In-Kind Furniture	1	Computer Shelf	350.00	163,293.83
01/02/2003		NA	Manugistics In-Kind Furniture	3	Cork Boards	54.00	163,347.83
01/02/2003		NA	Manugistics In-Kind Furniture	3	Vertical Filing Cabinets	750.00	164,097.83
01/02/2003		NA	Manugistics In-Kind Furniture	1	Short Filing Cabinets	175.00	164,272.83
01/02/2003		NA	Manugistics In-Kind Furniture	3	Table for Office	1,800.00	166,072.83
01/02/2003		NA	Manugistics In-Kind Furniture	6	Modular Walls for Art gallery	9,833.58	175,906.41
09/05/2002	CO2003-0002	NA	MBA Design & Display Products Corp	3	Document Stands	450.00	176,356.41
03/01/2003		NA	Montgomery County Library In-Kind Furniture	35 Pieces	4 Tables, 30 Chairs, 1 Stage	2,365.00	178,721.41
07/11/2001	Equip Acquisition	NA	Newport School	1	Piano	250.00	178,971.41
07/13/2001	Piano	NA	Newport School	4	Display Boards	400.00	179,371.41
03/01/2003		NA	NIH In-Kind Furniture		TC-WE475 Dual Deck Cassette/Pitch, 1402-VLZ 6 Mic In, 8 Line in, mixing console, CDP-1440 Single Disc CD Player with Pitch control	120.00	179,491.41
09/30/2002	139573	NA	RCI Sound Systems	3 pieces	refridgerator	124.98	179,616.39
09/10/2002	9395	NA	Sam's Club	4	control booth chairs	239.94	179,856.33
11/04/2002		NA	Staples	10	Chuck Levin's Music stands	159.50	180,015.83
12/12/2002	Reimburse	NA	Swanson, Bradford	1	Seating Riser-6 rows	12,665.00	192,680.83
08/26/2002	TJ1718	NA	TJ Distributors	1	CO2002-1291-Genie Elevator	5,542.00	198,222.83
07/13/2002	E04595	NA	Valley Supply & Equipment	1		198,222.83	198,222.83
Total 1314 - CIP-FF&E							
1356 - Stage Equipment							
07/31/2002	JE#3	A	Barbizon Lighting for Professionals	1	Dimming Sytem	0.00	
07/09/2002	193	A	Entertainment Systems	Various	CO2003-0001-Lighting Equipment	10,250.16	10,250.16
07/08/2002	1595296	A	Full Compass Systems, Ltd.	20	NL4MP Speakon 4 Pole rectangle	2,034.32	12,284.48
07/08/2002	1595288	A	Full Compass Systems, Ltd.	100	NC3MX-Bag XLR 3b Male cable Conn Blk	29.60	12,314.08
07/08/2002	1595288	A	Full Compass Systems, Ltd.	100	NC3MX-Bag XLR 3b Fem cable Conn Blk	176.00	12,490.08
07/08/2002	1595288	A	Full Compass Systems, Ltd.	100	297 3c 1/4" Male	184.00	12,674.08
07/08/2002	1595288	A	Full Compass Systems, Ltd.	100	280-Switchcraft 1/4" 2CM Metal Plug	201.00	12,875.08
07/08/2002	1595288	A	Full Compass Systems, Ltd.	100		111.00	12,986.08

08/27/2003 9:47 PM

Exhibit C-2

BlackRock Center for the Arts  
Fixed Assets

Date	Num	A/NA	Name	QTY	Memo	Amount	Balance
07/08/2002	1595288	A	Full Compass Systems, Ltd.	1	HW500 500Pc Phillips Screw/Washer	65.00	13,051.08
07/08/2002	1595288	A	Full Compass Systems, Ltd.	1	Shipping & Handling	60.00	13,111.08
07/17/2002	1599889	A	Full Compass Systems, Ltd.	20	NL4FC-B 20 Speakon4 pole cable Conn/Gold	56.40	13,167.48
07/13/2002	JE#3 Inv #S132043	A	Washington Professional Systems	1	ADC QB2 QCP Punch Tool Automatic W/Repl Tip Middle Atlantic RK12 12 Space 16" Deep, Black Laminated KD Rack	80.00	13,247.48
11/04/2002	S135507	A	Washington Professional Systems	1	Middle Atlantic RKW Caster kit for RK's and BRK's with 2 locking wheels	88.00	13,335.48
11/04/2002	S135507	A	Washington Professional Systems	1	JBL CT28 JBL Control 28 2 way spkr Blk	26.50	13,361.98
11/04/2002	S135507	A	Washington Professional Systems	4	Neutrik NL4FC 4 Pole Inline Speaker connector	656.00	14,017.98
11/04/2002	S136652	A	Washington Professional Systems	40	JBL MS28 100 x 80 Two way Full range System, 200W	240.00	14,257.98
11/06/2002	S136652	A	Washington Professional Systems	4	JBL 26CT ceiling speakers 70 V	1,980.00	16,237.98
11/06/2002	S136652	A	Washington Professional Systems	14	Whirlwind CustomW Single gang Panel	1,120.00	17,357.98
11/06/2002	S136818	A	Washington Professional Systems	2	Clearcom WP6	140.00	17,497.98
11/06/2002	S136818	A	Washington Professional Systems	21	Clearcom IC256	945.00	18,442.98
11/06/2002	S136818	A	Washington Professional Systems	6	Clearcom KB211 2 channel select flush mount Speaker headset/Spr station	546.00	18,988.98
11/06/2002	S136818	A	Washington Professional Systems	2	Clearcom KB212	460.00	19,448.98
11/06/2002	S136818	A	Washington Professional Systems	2	JBL 26CT ceiling speakers 70 V	460.00	19,908.98
11/06/2002	S136828	A	Washington Professional Systems	1	JBL CT28 JBL Control 28 2 way spkr White	80.00	19,988.98
11/06/2002	S136828	A	Washington Professional Systems	2	Lighting Control System	340.00	20,328.98
07/31/2002	JE#3	NA	Barbizon Lighting for Professionals	1	Safety Cable 1/8" x 30" Silver Finish	19,937.00	40,265.98
08/29/2002	135089	NA	Barbizon Lighting for Professionals	336	C-Clamp w/Stud & 1/2" Bolt	509.63	40,775.61
08/29/2002	135089	NA	Barbizon Lighting for Professionals	84	M1-XL Multi-FX Processor	467.16	41,242.77
07/08/2002	1595288	NA	Full Compass Systems, Ltd.	1	CE1000-A1Power Amp Speak-out (GCE1000A)	363.00	41,605.77
07/08/2002	1595296	NA	Full Compass Systems, Ltd.	1	CE2000-A1Power Amp Speak-out (GCE2000A)	365.00	41,970.77
07/08/2002	1595296	NA	Full Compass Systems, Ltd.	3	CE4000-A4 Power Amp (Spkn/Bana) (GCE4000A)	1,575.00	43,545.77
07/08/2002	1595296	NA	Full Compass Systems, Ltd.	2	480-Drive rack Programmable Speaker controller	2,066.00	45,611.77
07/08/2002	1595296	NA	Full Compass Systems, Ltd.	1	ACD-100 120v 100 Amp Power Distro	2,186.00	47,797.77
07/08/2002	1595288	NA	Full Compass Systems, Ltd.	1	GRQ3102 2 Chi GRAPHI-Q	351.00	48,148.77
07/08/2002	1595288	NA	Full Compass Systems, Ltd.	2	PL-PRO Power/Light Module 20 Amp	1,856.00	50,004.77
07/08/2002	1595288	NA	Full Compass Systems, Ltd.	1	TL34-21XE Tripod Boom Black	238.00	50,242.77
07/08/2002	1595288	NA	Full Compass Systems, Ltd.	4	DMS10E Instrument Stand	356.00	50,598.77
07/08/2002	1595288	NA	Full Compass Systems, Ltd.	2	PB11XE 16"-24" Arm W Weight Blk	48.00	50,646.77
07/08/2002	1595288	NA	Full Compass Systems, Ltd.	2	MK415 Portable MIC Cable XLRM-XLRF 15 Ft	70.00	50,716.77
07/08/2002	1595288	NA	Full Compass Systems, Ltd.	10	166XL 2Ch Limiter/gate	156.80	50,873.57
07/08/2002	1595288	NA	Full Compass Systems, Ltd.	2	MPX500 Digital Effects Processor	428.00	51,301.57
07/08/2002	1595288	NA	Full Compass Systems, Ltd.	1	CDR631 CD recorder	354.00	51,655.57
07/08/2002	1595288	NA	Full Compass Systems, Ltd.	1	EG15 Portable Instr Cable 1/4"-1/4" 15ft	445.00	52,100.57
07/12/2002	1598154	NA	Full Compass Systems, Ltd.	10	EWANT4r Antenna Splitter Kit Remote Mnt 518-550 range	78.60	52,179.17
07/12/2002	1598154	NA	Full Compass Systems, Ltd.	1	Wireless Mic Handheld System UHF 518-550 Range	507.00	52,686.17
07/12/2002	1599080	NA	Full Compass Systems, Ltd.	4	TL34-21XE Tripod/Boom Black	2,786.96	55,473.13
07/15/2002	1599080	NA	Full Compass Systems, Ltd.	6		534.00	56,007.13

Exhibit C-3



BlackRock Center for the Arts  
Fixed Assets

Date	Num	A/NA	Name	QTY	Memo	Amount	Balance
07/15/2002	1599080	NA	Full Compass Systems, Ltd.	1	TL34-15XE Tripod/Boom Black	85.00	56,092.13
07/15/2002	1599080	NA	Full Compass Systems, Ltd.	2	SS93E Stand Adjustable	154.00	56,246.13
07/15/2002	1599080	NA	Full Compass Systems, Ltd.	30	15-MIC-XX Portable Mic Cable XLR-XLR 15ft (M15)	470.00	56,716.13
07/22/2002	1602075	NA	Full Compass Systems, Ltd.	1	MTIPO816D-10 Insert Snake 8 Chl 10 ft	18.00	56,734.13
07/22/2002	1602443	NA	Full Compass Systems, Ltd.	2	MS10CE Mic Stand Black	44.00	56,778.13
07/22/2002	1602926	NA	Full Compass Systems, Ltd.	1	TL34-15XE Tripod/Boom Black	85.00	56,863.13
04/30/2003	1696757	NA	Parlights, Inc.	1	DT770-Pro 250 Headphone (1)	155.73	57,018.86
11/05/2002	12775	NA	Parlights, Inc.	1	BlackRock GoBos	684.00	57,702.86
11/15/2002	12803	NA	Parlights, Inc.	1	BlackRock GoBos	142.25	57,845.11
12/04/2002	12881	NA	Parlights, Inc.	1	Spotlight handle	67.50	57,912.61
04/02/2003	#13249	NA	Parlights, Inc.	1	DMX Pro handheld Tester & Scene saver	602.00	58,514.61
07/31/2002	JE#3	NA	Peachstate Audio-Birmingham	1	Cadence Special Order Case 6320-22/8500M/5995	916.96	59,431.57
07/31/2002	JE#3	NA	Peachstate Audio-Birmingham	1	Cadence Special Order Case 5120-22/8500M/5995	684.80	60,116.37
08/07/2002	PO# CO2003-011	NA	Stage Curtains	17	PO# CO2003-011	11,156.85	71,273.22
08/07/2002	PO# CO2003-012	NA	Stage Curtains	28	PO# CO2003-012	12,804.60	84,077.82
12/02/2002	Reimburse	NA	Swanson, Bradford	2	Furman P2Pro 20 Amp Power conditioner	435.00	84,514.82
07/24/2002	S132713	NA	Washington Professional Systems	1	Audio Technica ATM35 Miniature Fixed Charged Condensor	420.00	84,934.82
07/24/2002	S132713	NA	Washington Professional Systems	1	FOH Mix Position vault Box	1,212.10	86,146.92
07/24/2002	S132713	NA	Washington Professional Systems	1	Whirlwind W1CF wired to MPB12 Chassis Female, stage vault box	1,212.10	87,359.02
07/24/2002	S132713	NA	Washington Professional Systems	1	Whirlwind W1CF wired to MPB12 Chassis Male, series Two Fanouts	1,178.75	88,537.77
07/24/2002	S132713	NA	Washington Professional Systems	1	Whirlwind FM4012SBW4118SS Main inputs	433.55	88,971.32
07/24/2002	S132713	NA	Washington Professional Systems	1	Whirlwind FM317SBW21M8SS Aux and Line Sources XLR F	89,350.82	89,350.82
07/24/2002	S132713	NA	Washington Professional Systems	1	Portable DSP Rack	378.50	89,729.32
07/24/2002	S132713	NA	Washington Professional Systems	1	Whirlwind PKS12W1CF4 Mini/FOH DSP Out, IN from S2	598.00	89,948.82
07/24/2002	S132713	NA	Washington Professional Systems	2	Console in 2U panel jumpers	891.00	90,839.82
07/24/2002	S132713	NA	Washington Professional Systems	1	Whirlwind C1215W1M1W1F Stage vault box to Amp rack DSP Out to FOH Vault Box Stage box	2,180.00	93,019.82
07/24/2002	S132713	NA	Washington Professional Systems	1	Whirlwind BK40 15' Leader W/W41(0) Connectors portable snake	195.50	93,215.32
07/24/2002	S132713	NA	Washington Professional Systems	1	Whirlwind WD7C W4C(0) to 65 56PR IN W41(0) & W41CF to 65 12PR in W1M Custom panels and AMP Rack	195.50	93,410.82
07/24/2002	S132713	NA	Washington Professional Systems	1	Whirlwind PKS12W1CF4 Amp Rack	379.50	93,790.32
07/24/2002	S132713	NA	Washington Professional Systems	1	Whirlwind 3U Panel W/10NL4MP & Pks12W1CF4	4,100.00	97,890.32
07/24/2002	S132713	NA	Washington Professional Systems	2	Whirlwind 2U Panel PKS12W1CM4 & PKS20W2CF4	1,980.00	99,870.32
07/31/2002	JE#3 Inv #S132043	NA	Washington Professional Systems	2	Whirlwind 2U Panel PKS12W1CM4 & PKS20W2CF4 Eastern Acoustic KF300E 3 way Full range System 12' LF, 7' MF, 1" 90x45 Horn	1,950.00	101,820.32
07/31/2002	JE#3 Inv #S132043	NA	Washington Professional Systems	2	Eastern Acoustic SB250R EAW SB250R Eastern Acoustic LA212 2 Way Nearfield Vented Full Range Passive System	5,930.00	107,750.32
07/31/2002	JE#3 Inv #S132043	NA	Washington Professional Systems	4	Soundcraft Lectems Series 232 SN: 001705	480.00	108,230.32
07/31/2002	JE#3 Inv #S132043	NA	Washington Professional Systems	1	Shure SM58LC Cardioid Dynamic Mic	460.00	108,690.32
07/31/2002	JE#3 Inv #S132043	NA	Washington Professional Systems	4	Shure Beta87C Cardioid Electret Condenser for Vocal Applications		
07/31/2002	JE#3 Inv #S132043	NA	Washington Professional Systems	2			

Exhibit C-4

BlackRock Center for the Arts  
Fixed Assets

Date	Num	A/NA	Name	QTY	Memo	Amount	Balance
07/31/2002	JE#3 Inv #S132043	NA	Washington Professional Systems	4	Shure SM57LC Cardioid Dynamic Microphone	360.00	109,050.32
07/31/2002	JE#3 Inv #S132043	NA	Washington Professional Systems	2	Shure SM81 Cardioid Condenser Microphone w/10 dB Pad	690.00	109,740.32
07/31/2002	JE#3 Inv #S132043	NA	Washington Professional Systems	4	Whirlwind IMP2 Standard Direct Box	140.00	109,880.32
07/31/2002	JE#3 Inv #S132043	NA	Washington Professional Systems	4	Shure Beta58A SuperCardioid Dynamic w/ high Output Neodymium Element	480.00	110,360.32
07/31/2002	JE#3 Inv #S132043	NA	Washington Professional Systems	3	Sennheiser MD42111 Dynamic Cardioid Mic w/5 position Bass Roll Off Switch	900.00	111,260.32
07/31/2002	JE#3 Inv #S132043	NA	Washington Professional Systems	2	Furman PLPRO Power Conditioner/Light Module	560.00	111,820.32
11/04/2002	S135507	NA	Washington Professional Systems	1	ASHLY PQX571	295.00	112,115.32
11/04/2002	S135507	NA	Washington Professional Systems	2	ASHLY PQX572 Stereo 7 Band Parametric EQ	1,030.00	113,145.32
11/04/2002	S135507	NA	Washington Professional Systems	1	Mackie 1604VLZ 16Ch Mic/Line Mixer	880.00	114,025.32
11/04/2002	S135507	NA	Washington Professional Systems	2	Maranitz PAC770 Pro Sound system w/Amp	2,090.00	116,115.32
11/04/2002	S135507	NA	Washington Professional Systems	1	Crown CE2000 Crown AMP	620.00	116,735.32
11/04/2002	S135507	NA	Washington Professional Systems	1	Ashly MOX2310	590.00	117,325.32
11/04/2002	S136255	NA	Washington Professional Systems	1	Crest Audio XR20 12 Mono + 4 stereo Input, Rack Mounted Mixer	1,670.00	118,995.32
11/04/2002	S136304	NA	Washington Professional Systems	2	Crown CTS4200 Crown AMP SN: 682140/682139	1,610.00	120,605.32
11/06/2002	S136818	NA	Washington Professional Systems	1	Clearcom CS222 2 Channel Portable Headset Main Station	615.00	121,220.32
11/06/2002	S136818	NA	Washington Professional Systems	4	Clearcom CC95 Single ear standard headset	548.00	121,768.32
11/06/2002	S136818	NA	Washington Professional Systems	1	Clearcom MS232 2 ch. Headset/speaker main station	697.00	122,465.32
11/06/2002	S136818	NA	Washington Professional Systems	1	Clearcom HS6 Telephone Style headset	71.00	122,536.32
11/06/2002	S136818	NA	Washington Professional Systems	1		122,536.32	122,536.32
Total 1356 - Stage Equipment							
1360 - Computer Equipment							
07/01/1997		NA	Compaq	2	Computer HP Neiserver TC4-100 P3 - 1.26G W Backup Exec V8.6 Server edition SN: US22640614	3,956.00	3,956.00
08/13/2002	88848	NA	CSP Enterprises	1	EVO D510 CMT P4/2ghz/256MB/40G (See invoice for Serial #5) and Samsung 15" Monitors	8,060.00	12,016.00
09/17/2002	89055	NA	CSP Enterprises	6	Micro-Laser Printer	9,600.00	21,616.00
06/02/1999		NA	HP	1	Fax	1,150.00	22,766.00
06/26/1998		NA	HP-Disposed	1	Fax	0.00	22,766.00
05/18/1999		NA	Microframe	1	Computer	683.00	23,449.00
03/02/1999		NA	Microframe-Compaq	1	Computer	2,000.00	25,449.00
03/11/1999		NA	Microframe-Compaq	1	Computer	4,187.00	29,636.00
05/01/2000		NA	Microframe-Compaq	1	Server	12,006.75	41,642.75
						41,652.75	41,652.75
Total 1360 - Computer Equipment							
1365 - Software							
05/04/1999		NA	BlackBaud	1	Raisers Edge Software	6,135.00	6,135.00
03/10/1999		NA	BlackBaud	1	Pro Accounting Solution (GL & AP)	3,500.00	9,635.00

Exhibit C-5

BlackRock Center for the Arts  
Fixed Assets

Date	Num	A/NA	Name	QTY	Memo	Amount	Balance
08/18/2002	0000054621	NA	Tickets.com, Inc.	1	Ticketmaker.com Box Office Software (\$4,928.05) w two Pric	7,353.05	16,988.05
					Auto LTX desktop thermal printer (\$2,425)	16,988.05	16,988.05
						379,399.95	379,399.95

Total 1365 - Software

TOTAL

Exhibit C-6



## MISSION STATEMENT

The mission of BlackRock Center for the Arts is to provide quality performing arts, visual arts and arts education programs for the benefit of the residents of Germantown and the Montgomery County region. The Center will serve as an arts resource center for the community by engaging residents in the arts through its presenting and education programs, and through community participation in its facilities.

## EXHIBIT D

12901 Town Commons Road Germantown, MD 20874  
telephone (301) 528-2260 fax (301) 528-2266  
[www.blackrockcenter.org](http://www.blackrockcenter.org)

**EXHIBIT E - Security Interest Personal Property  
Release Schedule  
BlackRock Center for the Arts  
Fixed Assets**

Date	Num.	A/NA	Name	QTY	Memo	Amount
<b>1314 - CIP-FF&amp;E</b>						
3/10/2003	Inv #010597	NA	Arbutus Refrigeration	1	Manitowoc ice machine w/everpure water filter	2,000.00
10/8/2002	Reimburse	NA	Balcombe, Marilyn	1	Arakawa-Art Hanging Systems	1,872.76
3/21/2003	Reimburse	NA	Balcombe, Marilyn	1	Sears Stove for BR Pantry	402.98
3/21/2003	Reimburse	NA	Balcombe, Marilyn	1	Sears Dishwasher for BR Pantry	259.99
1/8/2003	Reimburse	NA	Bialik, Alan	1	Refrigerator	449.88
2/7/2003	108	NA	Cummings, Bill	12	Gallery pedestals	2,670.00
9/17/2002	1436	NA	Entertainment Storage, Inc	1	Apron skirting for theater thrust	7,500.00
9/17/2002	1435	NA	Entertainment Storage, Inc	1	6 roll Dance floor rack	2,300.00
10/7/2002	CO2003-0032	NA	Gilbert's Inc.	24	30" round base cabaret tables	1,375.20
9/10/2002	104	NA	Cummings, Bill	12	laborets	1,080.00
Total 1314 - CIP-FF&E						19,910.81
<b>1355 - Stage Equipment</b>						
11/6/2002	S136818	NA	Washington Professional Systems	1	Clearcom CS222 2 Channel Portable Headset Main Station	615.00
11/6/2002	S136818	NA	Washington Professional Systems	4	Clearcom CC95 Single ear standard headset	548.00
11/6/2002	S136818	NA	Washington Professional Systems	1	Clearcom MS232 2 ch. Headset/speaker main station	697.00
11/6/2002	S136818	NA	Washington Professional Systems	1	Clearcom H56 Telephone Style headset	71.00
11/4/2002	S135507	NA	Washington Professional Systems	2	Marantz PAC770 Pro Sound system w/Amp	2,090.00
Total 1355 - Stage Equipment						4,021.00
Year 4						23,931.81

All remaining collateral described in Exhibit B including but not limited to the above items to be released By Sandy Spring Bank and conveyed to the County in accordance with Section 7 (c) of the Lease concurrent with the payment due on or before July 1, 2007.

County Maintenance Responsibilities at The BlackRock Center for The Arts.  
EXHIBIT F

The County Will Perform Preventive, Corrective And Emergency Repairs And Maintenance To The Following Facility Systems At The BlackRock Center That Are Typically Found In A Commercial Type Office Building:

- HVAC Mechanical Systems Including the Energy Management System
- Plumbing System and Associated Fixtures
- Electrical System Such As Lighting, Both Interior And Exterior, Outlets, Panels, Wiring, (Exclusive Of All Stage Lighting And Audio Visual Systems And Specialized Lighting Required For Artwork That Are Unique To An Arts Center And Other Program Related Hardware And Equipment)
- Structural Components Such As Walls, Floors and Carpet (Dance Floors Requiring Periodic Specialized Refinishing Are Not Included), Ceilings, Doors, Locks, Windows
- Life Safety Systems, Such As Fire Alarms and Fire Suppression Systems Including Fire Extinguishers
- Roof
- Painting
- Elevator
- Building Security System
- Parking Lot and Side Walks
- Janitorial Services To Provide Routine Cleaning Seven (7) Days Per Week And A Day Porter For A Fixed Shift Of Six (6) Hours, Seven (7) Days Per Week. Any Services Required Above This Level Including But Not Limited To Cleaning Of Concession Stand Equipment, And Cleaning Needed During Hours Not Staffed By The Day Porter Such As Would Be Needed In Between Programs, Carpet Cleaning Is The Responsible Of BlackRock.
- Window Washing
- All Grounds Maintenance Including Mowing, Edging, Hand Weeding On A 7 Day Cycle, Litter Pick Up And Empty Trash Receptacle 3 Days Per Week
- Refuse/ Recycling Pick-Up and Program Management
- Integrated Pest Management
- Snow/Ice Removal of the Parking Lot and Adjacent Walks

**CAPITAL REPLACEMENT AND PROJECTED EXPENDITURE SCHEDULE  
BLACKROCK CENTER  
EXHIBIT G**

	5 years	7 years	10 years	14 years	15 years	20 years	
Paint	\$ 40,000.00		\$ 40,000.00		\$ 40,000.00	\$ 40,000.00	\$ 160,000.00
Elevator						\$ 190,000.00	\$ 190,000.00
HVAC						\$ 375,000.00	\$ 375,000.00
Roof						\$ 125,000.00	\$ 125,000.00
Fire Alarm						\$ 100,000.00	\$ 100,000.00
Carpet		\$ 40,000.00		\$ 40,000.00		\$ 40,000.00	\$ 120,000.00
Theatre Seats		\$ 28,000.00		\$ 28,000.00		\$ 28,000.00	\$ 84,000.00
AV Equip & stage Lighting			\$ 65,000.00			\$ 125,000.00	\$ 190,000.00
							\$ 1,344,000.00

**Capital Equipment Replacement Escrow Account Schedule**

Year	Year 1	Year 2	Year 3	Year 4	Year 5	Year 6	Year 7	Year 8	Year 9	Year 10	Year 11	Year 12	Year 13	Year 14	Year 15	Year 16	Year 17	Year 18	Year 19	Year 20	Escrow amount after 17 years		
	\$ -	\$ -	\$ 3,000.00	\$ 10,000.00	\$ 25,000.00	\$ 30,000.00	\$ 40,000.00															\$ 108,000.00	
																							\$ 540,000.00
																							\$ 1,191,000.00

years 8 through 17 include 85% of the expenditures projected for year 20 (\$1,023,000 x 85%=\$87,000)  
Balance of \$153,000 to be collected in years 18 through 20 via renewal agreement

## EXHIBIT H

Signage will be permitted to announce upcoming performances, class registrations, gallery exhibits, and other arts events, such as a summer concert series, to be taking place at BlackRock. Signage will also be permitted which generally markets BlackRock, e.g., "Come Visit BlackRock Today!". The language in such signage must be usual and customary for signage of a similar nature. Under no circumstances will signage be permitted which is political in nature, which expresses a private opinion about a matter, or which can be considered inflammatory in nature. As long as the signage is of the sort permitted, above, no prior consent for such signage will be required from the County.