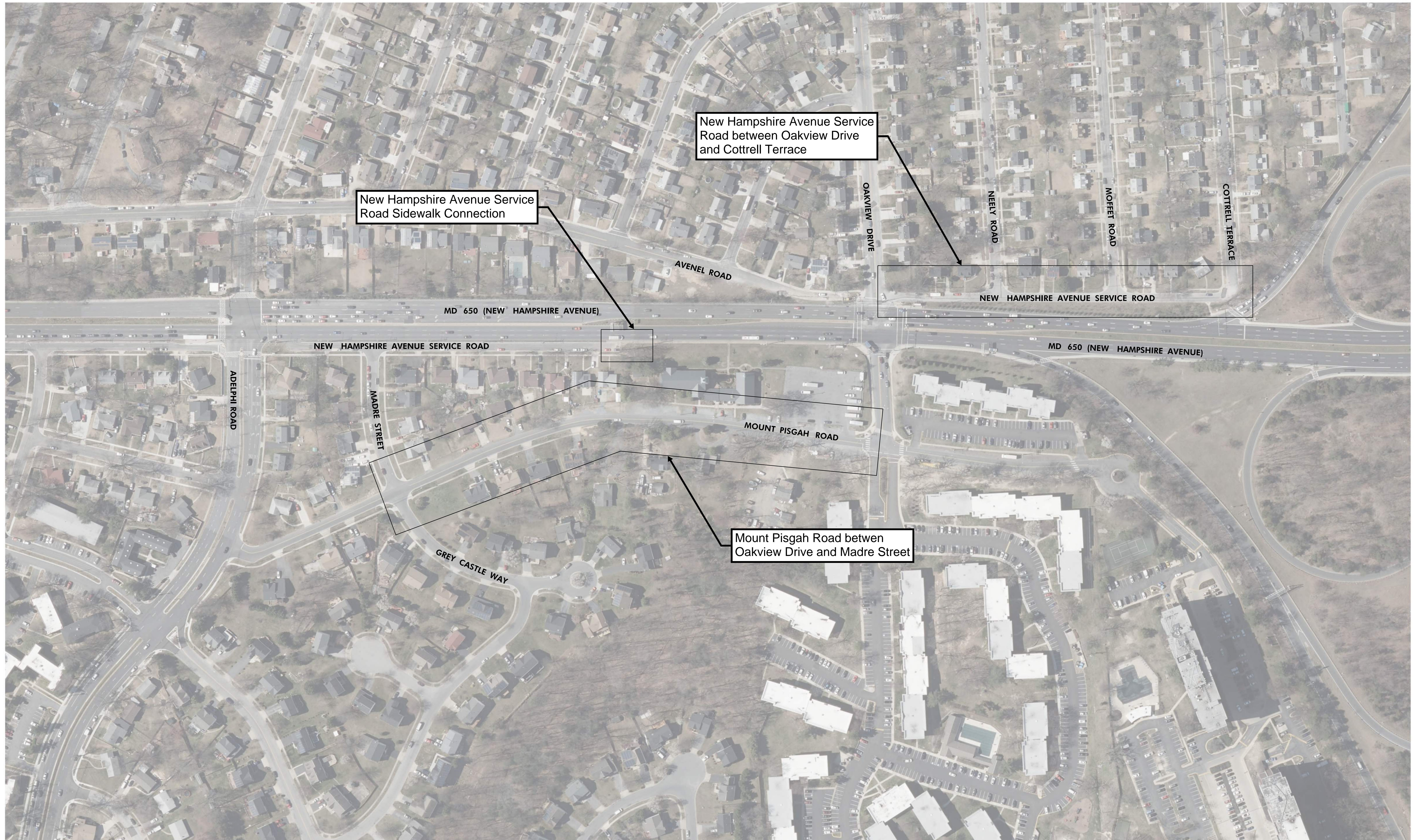
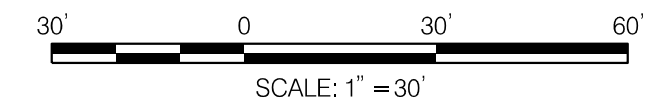
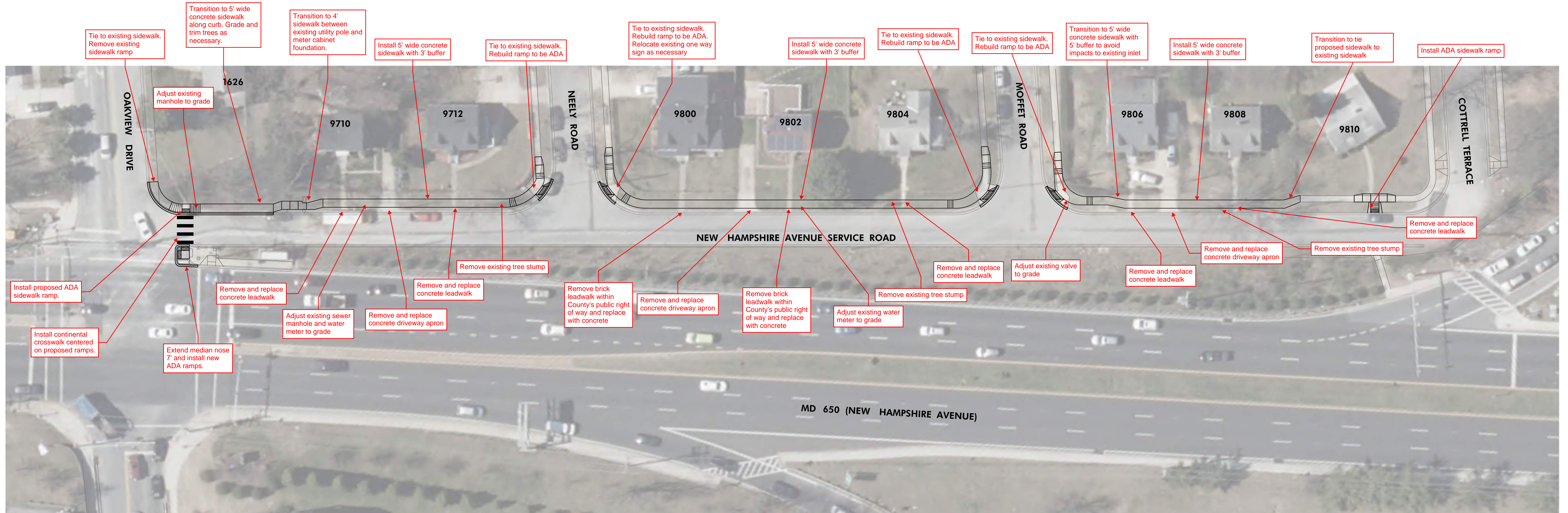
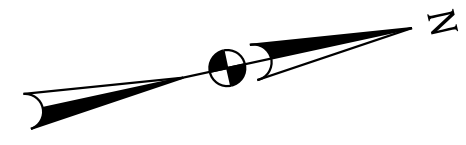


MD 650 (NEW HAMPSHIRE AVENUE) SAFETY IMPROVEMENTS



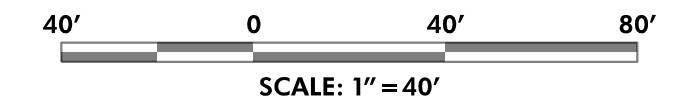
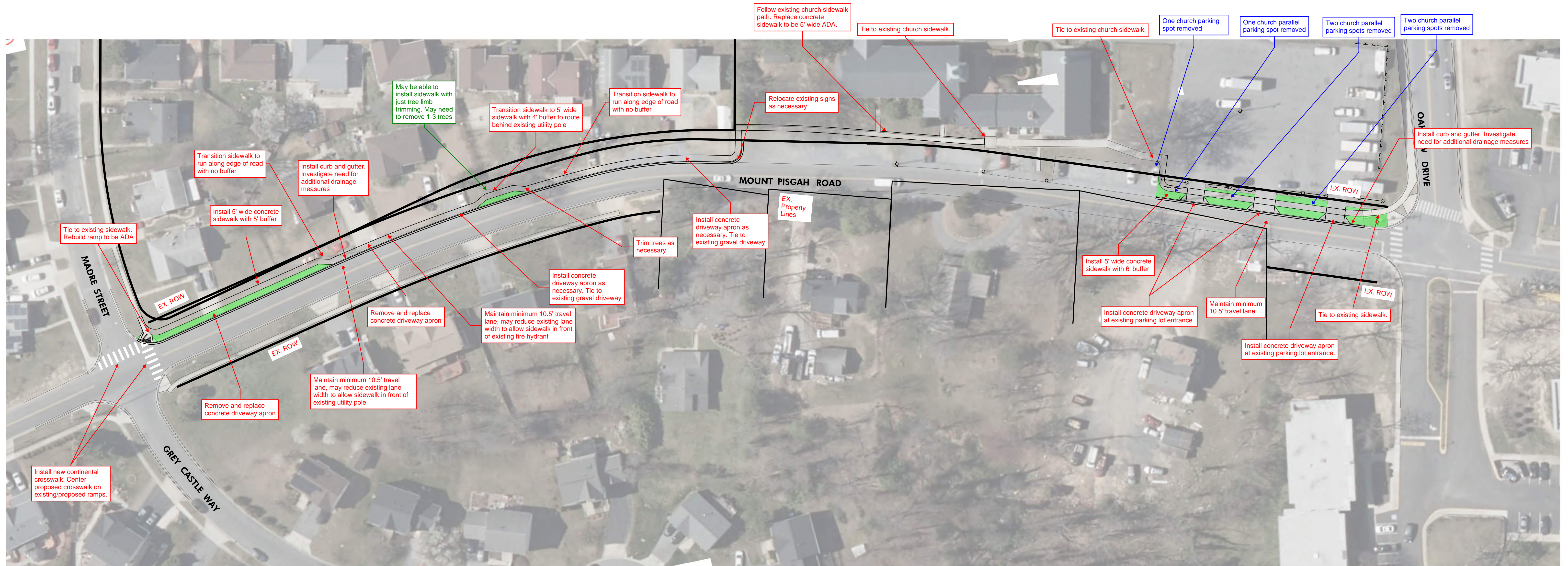
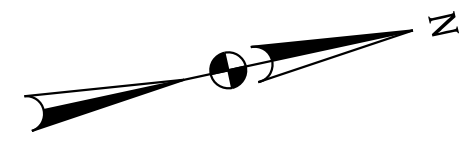


NEW HAMPSHIRE AVENUE SERVICE ROAD SIDEWALK IMPROVEMENTS CONCEPT

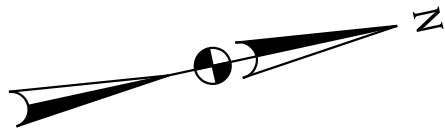




MOUNT PISGAH ROAD SIDEWALK IMPROVEMENTS CONCEPT







MD 650 (NEW HAMPSHIRE AVENUE)

MD 650 (NEW HAMPSHIRE AVENUE)

Install curb and gutter. Tie to existing curbs on either side of New Hampshire Avenue Service Road.

Tie to existing sidewalk

EX. ROW

NEW HAMPSHIRE AVENUE SERVICE ROAD

Install 5' wide concrete sidewalk

Remove/trim existing vegetation as necessary

EX. ROW

Tie to existing sidewalk

9613

9615

9701

9611

