



# NEW HAMPSHIRE AVENUE (MD 650) ROADWAY SAFETY FORUM



National Capital Region  
Transportation Planning Board



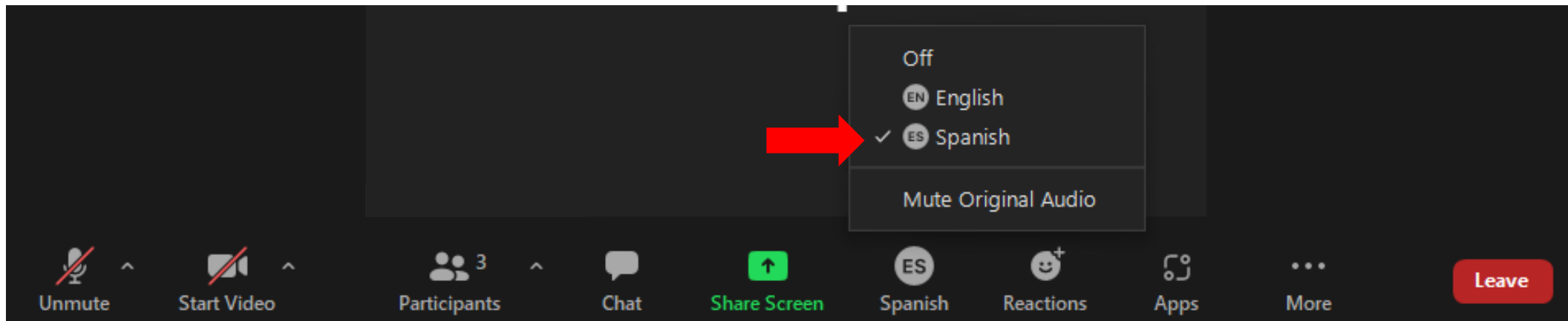
**MC**DOT

Hosted by:



# Instrucciones para interpretación simultánea en español

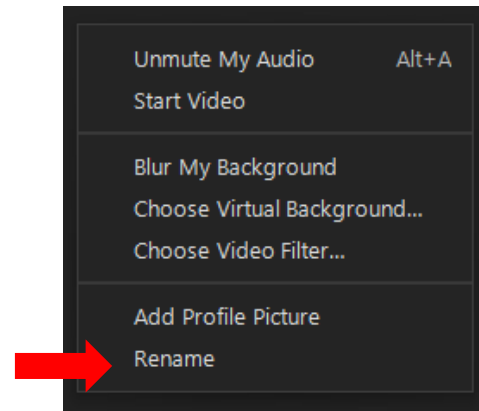
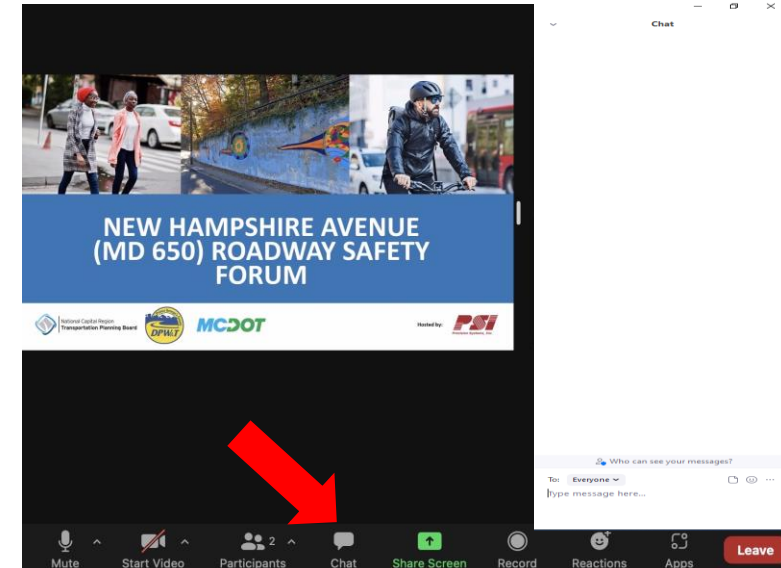
- Para traducir esta reunión al español, seleccione la pista "Español"



# Virtual Meeting Instructions

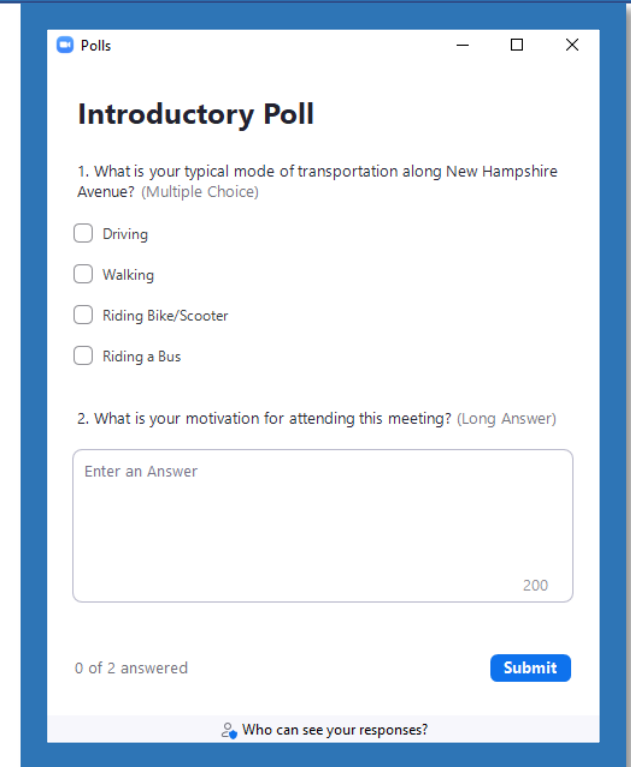
- Please note that this meeting is being recorded.
- In order to reduce background noise, participants are muted until Open Discussion at the end.
  - If you have a question during the presentation, please use the chat feature.
- Please right click on your portrait to set your name.

*New Hampshire Avenue (MD 650) Roadway Safety Forum*

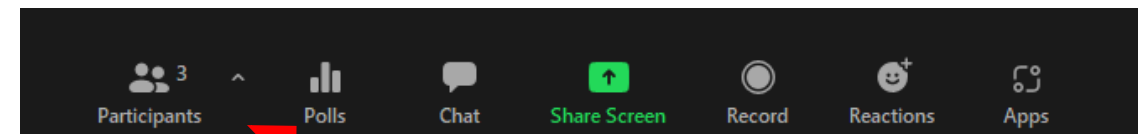


# Virtual Meeting Instructions

- Polls will be administered during this presentation.
- The first poll will be given now.
- If you do not see the poll or close it, you can access all open polls again by pressing the 'polls' button



The screenshot shows a window titled "Polls" with a close button. Inside, the title "Introductory Poll" is displayed. The first question is "1. What is your typical mode of transportation along New Hampshire Avenue? (Multiple Choice)". It has four radio button options: "Driving", "Walking", "Riding Bike/Scooter", and "Riding a Bus". The second question is "2. What is your motivation for attending this meeting? (Long Answer)". Below it is a text input field with a "200" character limit indicator. At the bottom left, it says "0 of 2 answered". At the bottom right is a blue "Submit" button. Below the "Submit" button is a link that says "Who can see your responses?".




# Meeting Purpose

- **To gather the opinion of the general public** on pertinent safety issues that can be addressed or considered during this road safety study to help improve safety for all road users
- **To collect suggestions on road improvement alternatives** that can help improve safety of all road users

# Agenda

- Team Introductions
- Project Information
- Public Involvement
- Safety Condition Polls
  - Pedestrians
  - Bicyclists
  - Transit Users
  - Drivers
- Open Discussion and Follow-up
- Adjournment at 9pm

# Agenda

- 
- Team Introductions
  - Project Information
  - Public Involvement
  - Safety Conditions
    - Pedestrians
    - Bicyclists
    - Transit Users
    - Drivers
  - Open Discussion and Follow-up
  - Adjournment at 9pm




# Team Introductions

- **Transportation Planning Board**
  - Jon Schermann, Systems Performance Analysis Manager
- **Montgomery County**
  - Wade Holland, Vision Zero Coordinator
  - John Hoobler, P.E., Capital Projects Manager
  - Eric Sideras, P.E., Senior Planning Specialist
- **Prince George's County**
  - Hadi Quaiyum, Traffic Engineering and Safety Chief
  - Andrea Lasker, Vision Zero Coordinator
- **Precision Systems, Inc.**
  - Jianwei Wang, PhD, Project Manager
  - Jacob Green, P.E., P.T.O.E., Project Engineer



# Agenda

- Team Introductions
-  • Project Information
- Public Involvement
- Safety Conditions
  - Pedestrians
  - Bicyclists
  - Transit Users
  - Drivers
- Open Discussion and Follow-up
- Adjournment at 9pm

# NEW HAMPSHIRE AVENUE (MD 650) SAFETY STUDY

## Project Limits

- New Hampshire Avenue (MD 650) between Piney Branch Road (MD 320) and I-495.
- Identified by Montgomery County and Prince George's County as a High Injury Network location.
  - High Injury Networks are defined as roadway segments with a disproportionately higher number of serious and fatal crashes when compared to other areas in the County.

*New Hampshire Avenue (MD 650) Roadway Safety Forum*



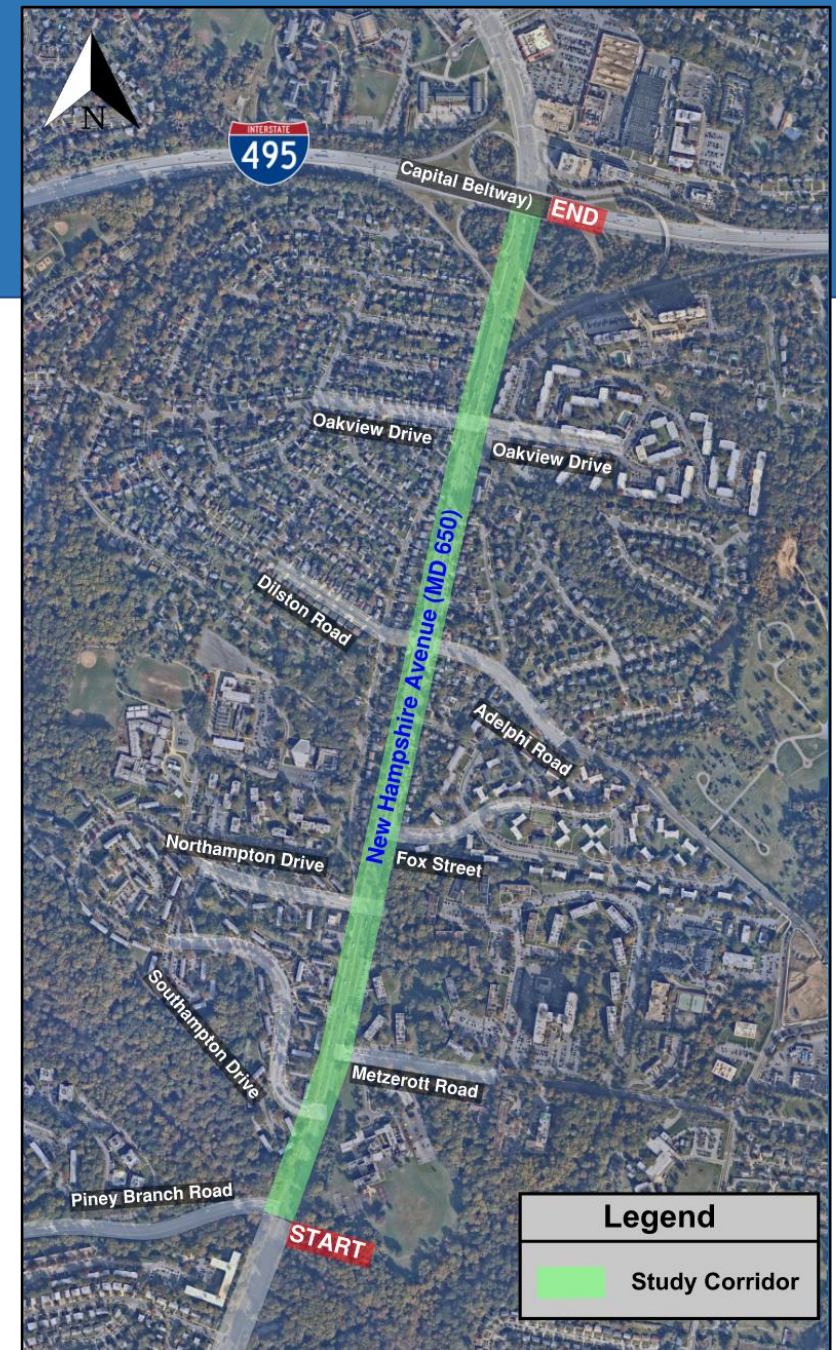


# NEW HAMPSHIRE AVENUE (MD 650) SAFETY STUDY

## Project Background

- Study area is also located within a TPB Equity Emphasis Area (EEA).
  - EEAs are census tracts with high concentrations of low-income individuals and/or racial and ethnic minorities.
- [TPB's Regional Roadway Safety Program](#) granted funding to facilitate this Roadway Safety Study.

*New Hampshire Avenue (MD 650) Roadway Safety Forum*



# Project Goals


1. **Identify major safety needs** for pedestrians, bicyclists, transit users, and motorists along New Hampshire Avenue (MD 650) from Piney Branch Road (MD 320) to the Beltway (I-495).
2. **Provide feasible safety improvement recommendations** along New Hampshire Avenue (MD 650).

# NEW HAMPSHIRE AVENUE (MD 650) SAFETY STUDY

## Project Status

- Project Kickoff
- ➔ • **Existing Conditions Review**
  - Data and Documentation Review
  - Public Involvement
  - Field Visits
- Provide Recommendations
- Final Road Safety Audit Report including results of all efforts

# Agenda


- Team Introductions
- Project Information
-  • Public Involvement
- Safety Condition Polls
  - Pedestrians
  - Bicyclists
  - Transit Users
  - Drivers
- Open Discussion and Follow-up
- Adjournment at 9pm

# Public Involvement

- **Gain insights** into roadway safety challenges within project limits
- **To identify safety concerns from road users:** pedestrians, bicyclists, transit users, and motorists
- **To increase safety awareness along** New Hampshire Avenue (MD 650)



# Agenda

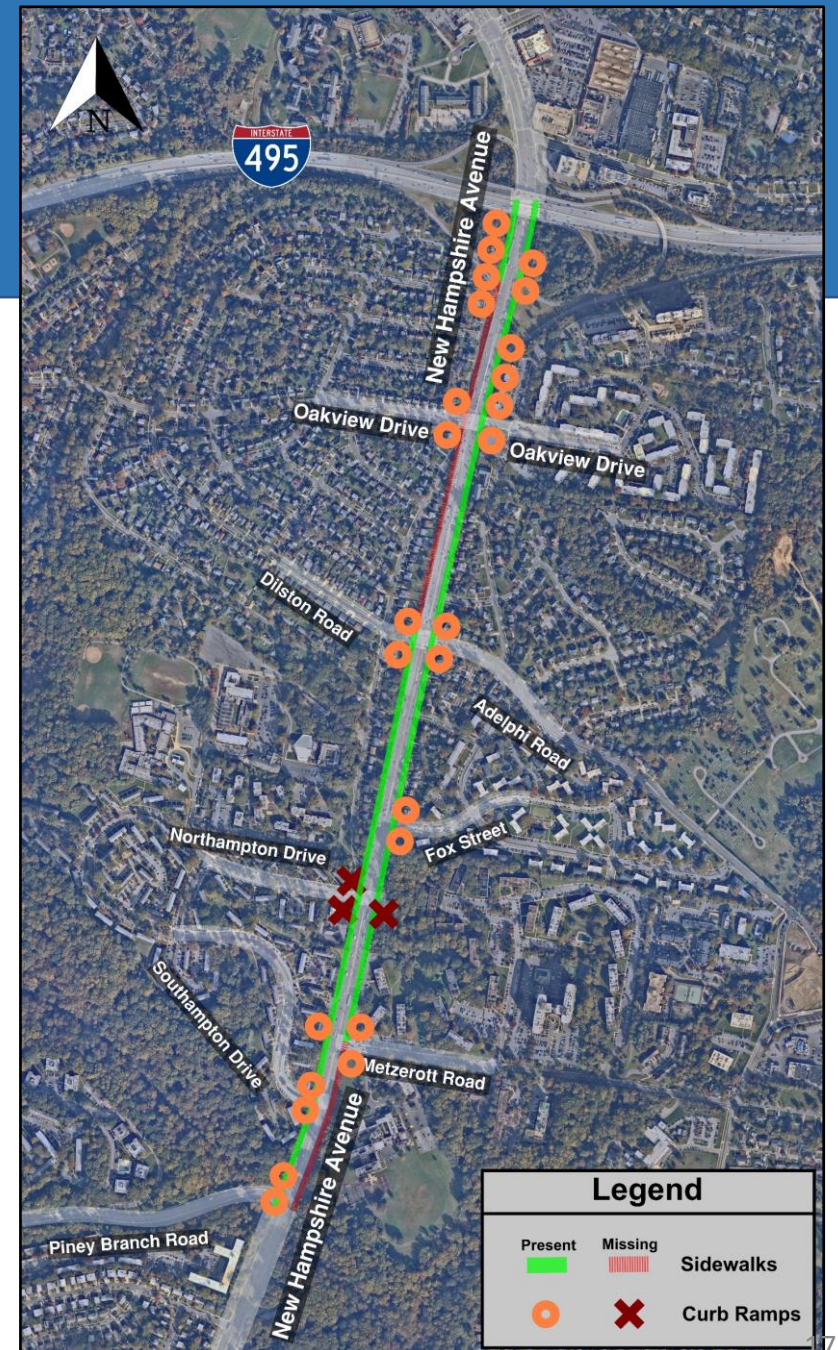
- Team Introductions
- Project Information
- Public Involvement
-  • Safety Conditions
  - Pedestrians
  - Bicyclists
  - Transit Users
  - Drivers
- Open Discussion and Follow-up
- Adjournment at 9pm

# Pedestrian Safety

- Sample Concerns
  - Sidewalk Condition
  - Wheelchair Ramp Condition
  - Crosswalk Condition
  - Missing Crosswalks
  - Lighting Conditions
  - Trip Hazards
  - Pedestrian Signal Crossing Time
  - Vehicles fail to stop
  - Turning Vehicles

**Please fill out the Pedestrian Safety Survey**

*New Hampshire Avenue (MD 650) Roadway Safety Forum*



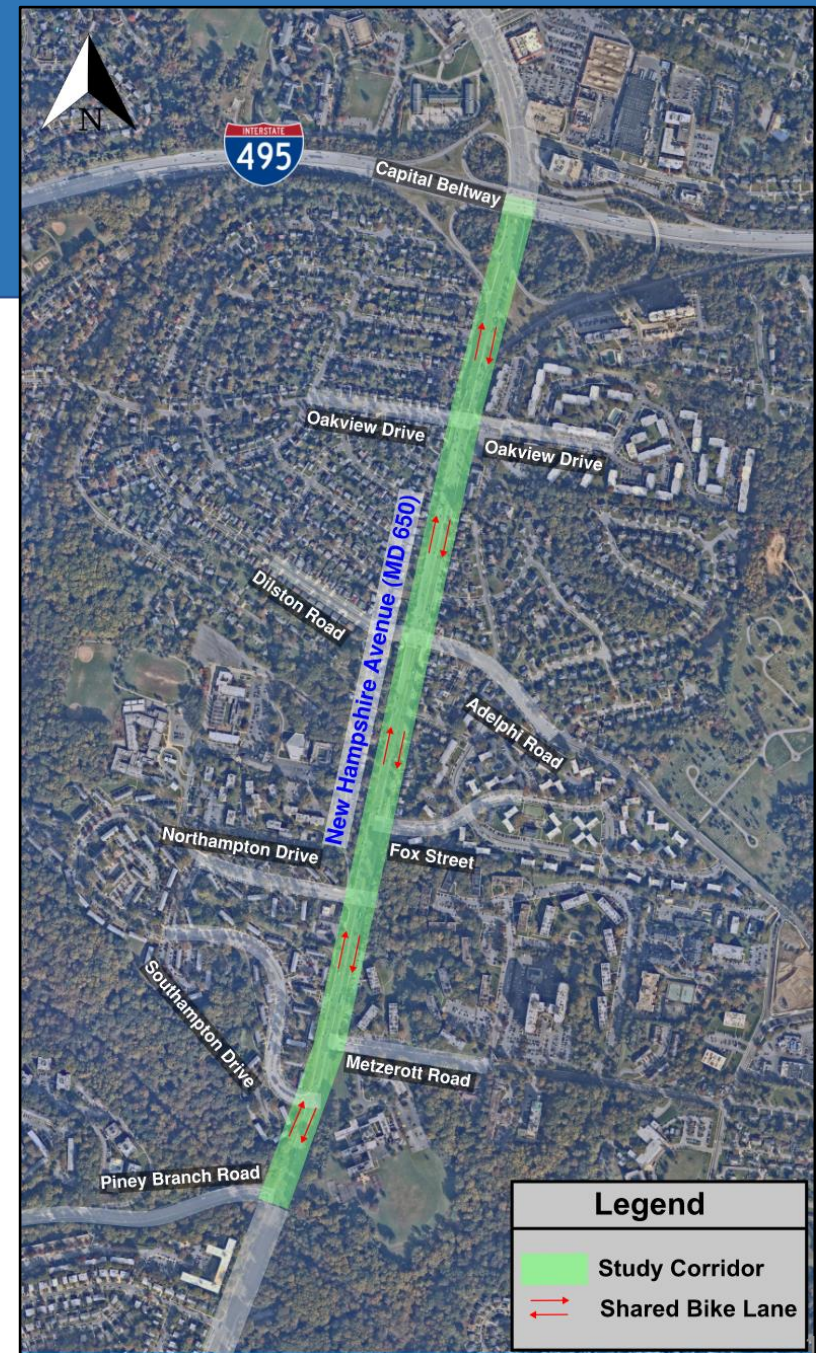


# Bicyclist Safety

- Sample Concerns
  - Shared Bicycle Lane in Roadway
  - Potholes / Trip Hazards
  - Uneven roadway
  - Inadequate bicycle warning signs or pavement markings
  - Bicyclists on sidewalk
  - Speeding Vehicles
  - Turning Vehicles

• **Please fill out the Bicyclist Safety Survey**

*New Hampshire Avenue (MD 650) Roadway Safety Forum*



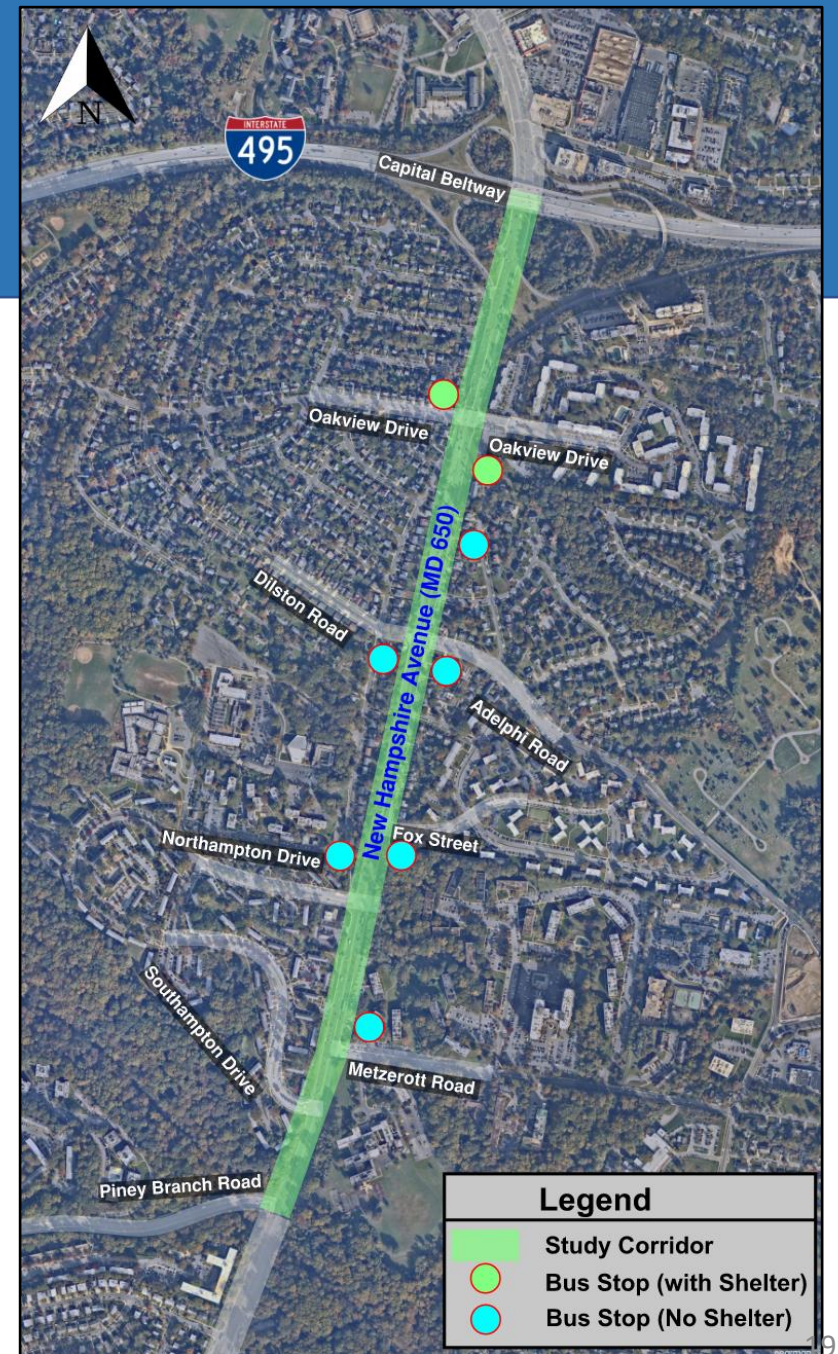


# Transit Safety

- Sample Concerns
  - Bus shelter or waiting area condition
  - Bus stop lighting
  - Bus waiting times
  - Bus stopping impeding traffic

• **Please fill out the Transit Safety Survey**

*New Hampshire Avenue (MD 650) Roadway Safety Forum*



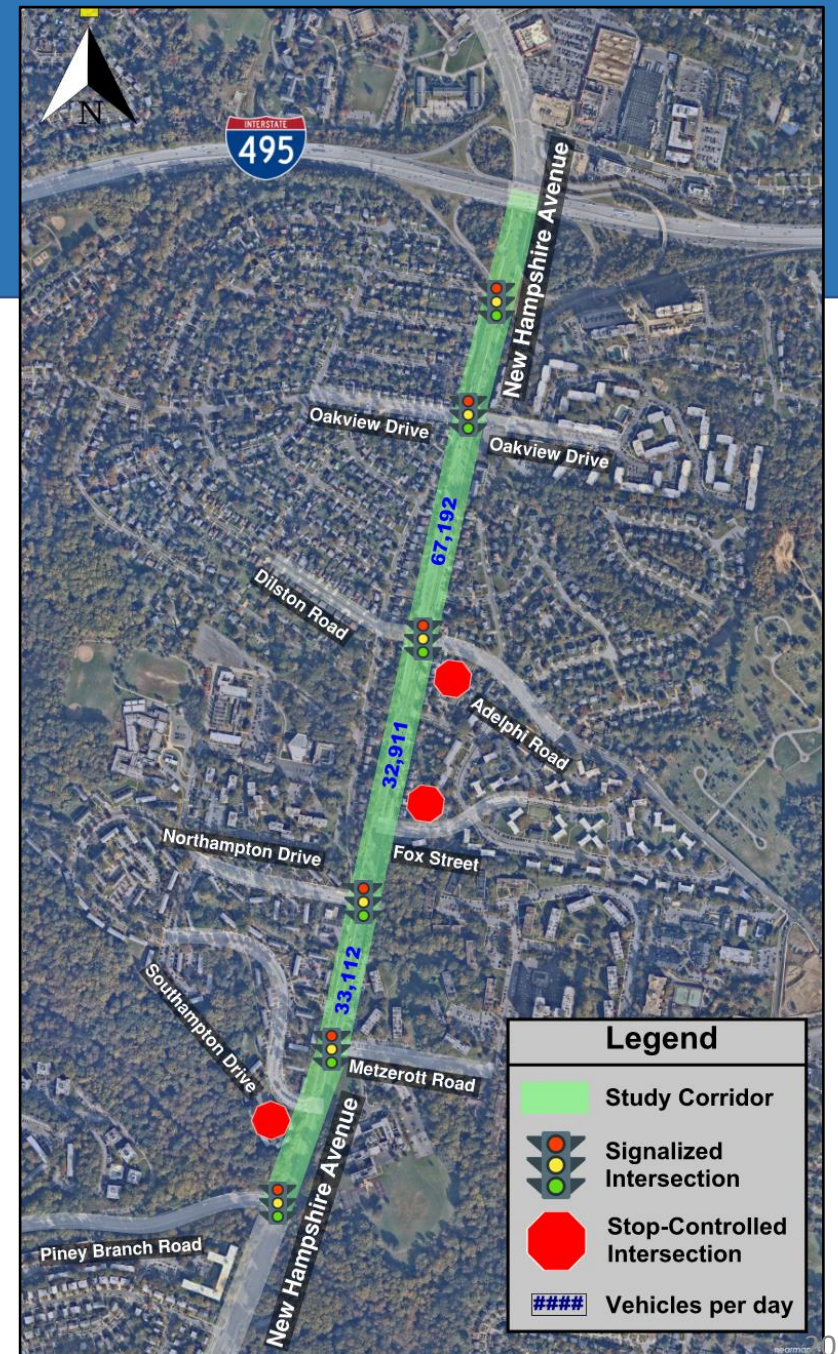


# Vehicular Safety


- Sample Concerns
  - Vehicle speeding
  - Vehicle sudden stopping
  - Pedestrian jaywalking
  - Bicyclists in roadway
  - Visibility of pedestrians or bicyclists
  - Vehicular queueing or blocking
  - Finding a gap to merge from side streets
  - Aggressive driving behavior
  - Potholes
  - Yellow and Red Signal Timing
  - Unsignalized Intersections
  - Pavement Markings

**• Please fill out the Vehicular Safety Survey**

*New Hampshire Avenue (MD 650) Roadway Safety Forum*



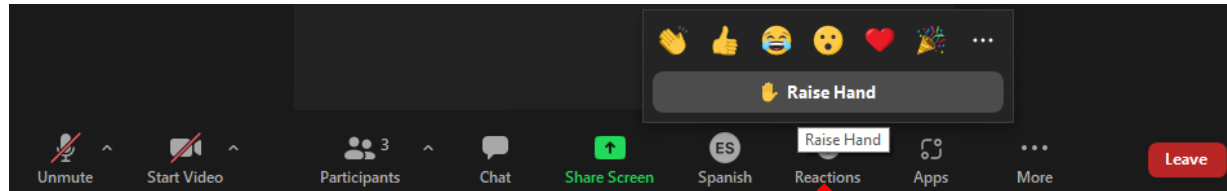
# Agenda

- Team Introductions
- Project Information
- Public Involvement
- Safety Conditions
  - Pedestrians
  - Bicyclists
  - Transit Users
  - Drivers
-  • Open Discussion and Follow-up
- Adjournment at 9pm



# Open Discussion

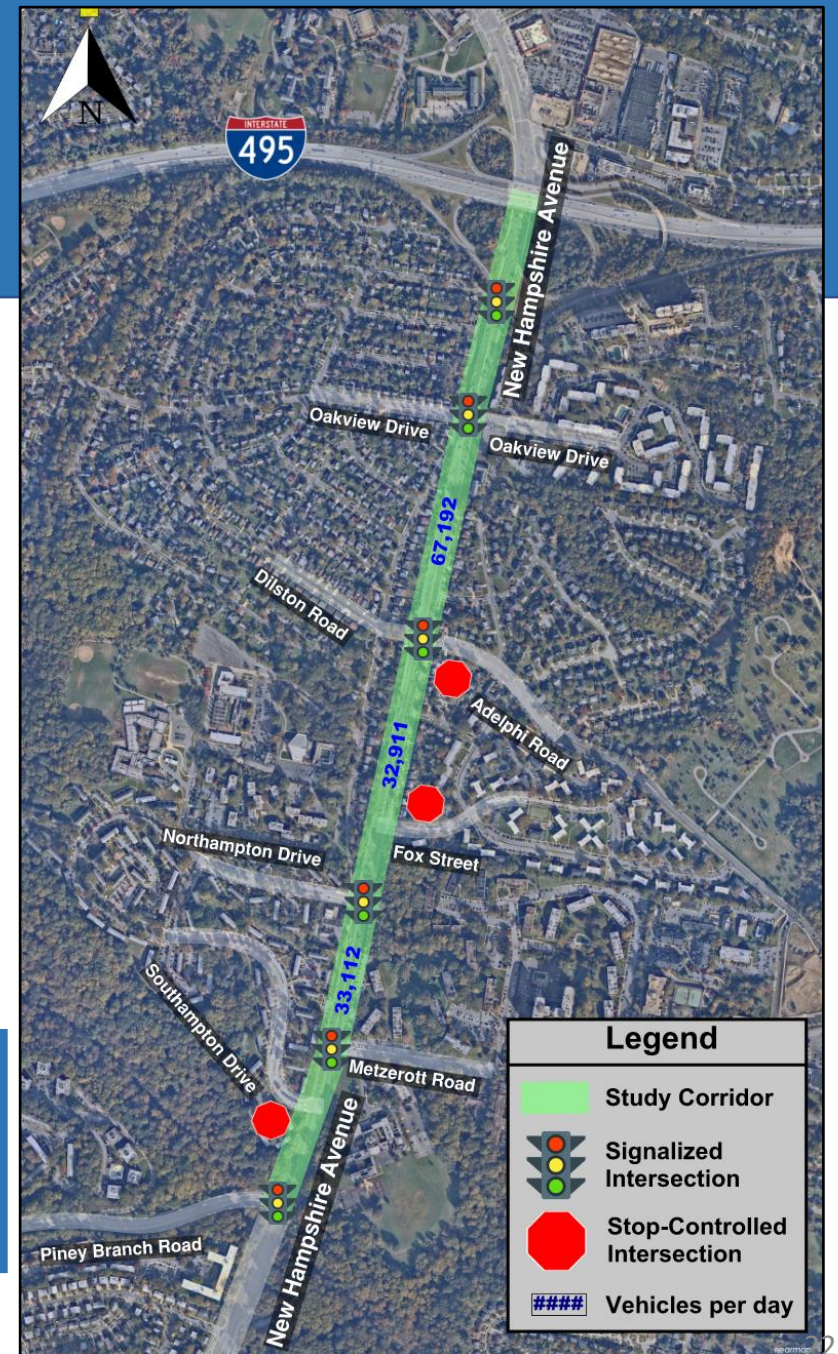
- Let us know your experiences on New Hampshire Avenue (MD 650)
- Raise Hand and to be put in queue to provide input



- Please send additional or follow-up concerns via the online survey.

<https://forms.office.com/r/0nsf6fXpVE>

*New Hampshire Avenue (MD 650) Roadway Safety Forum*





# Web Resource Links to Related Projects

- [MWCOCG Transportation Planning Board Regional Safety Program](#)
- [Vision Zero Montgomery County, MD](#)
- [Vision Zero Prince George's County, MD](#)
- [New Hampshire Flash Bus Rapid Transit \(BRT\)](#)

Please send additional or follow-up concerns via the online survey.  
<https://forms.office.com/r/0nsf6fXpVE>

