

Old Georgetown Road (MD 187) Pedestrian Road Safety Audit

Stakeholder Pedestrian Safety Meeting

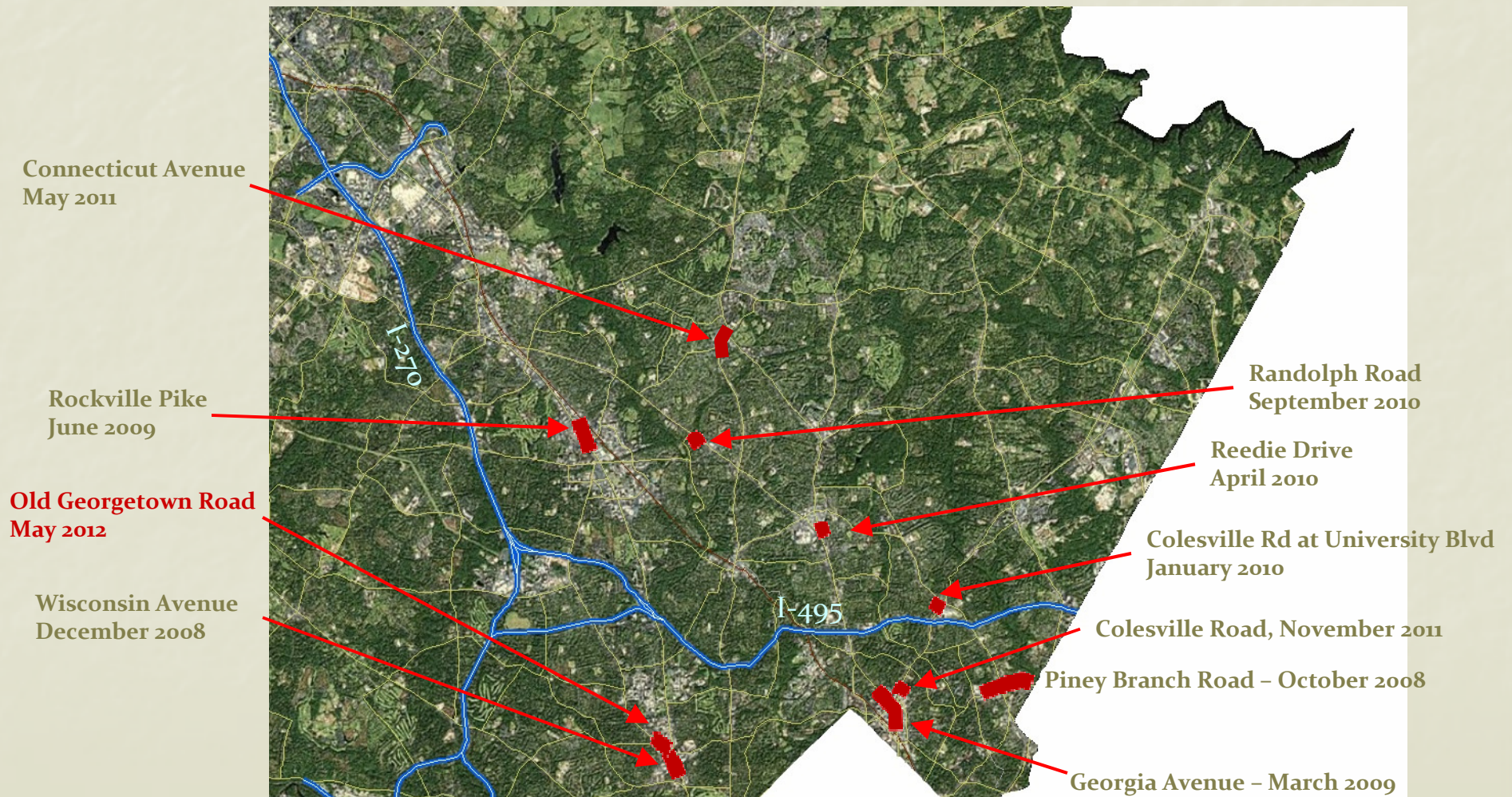


April 25, 2012

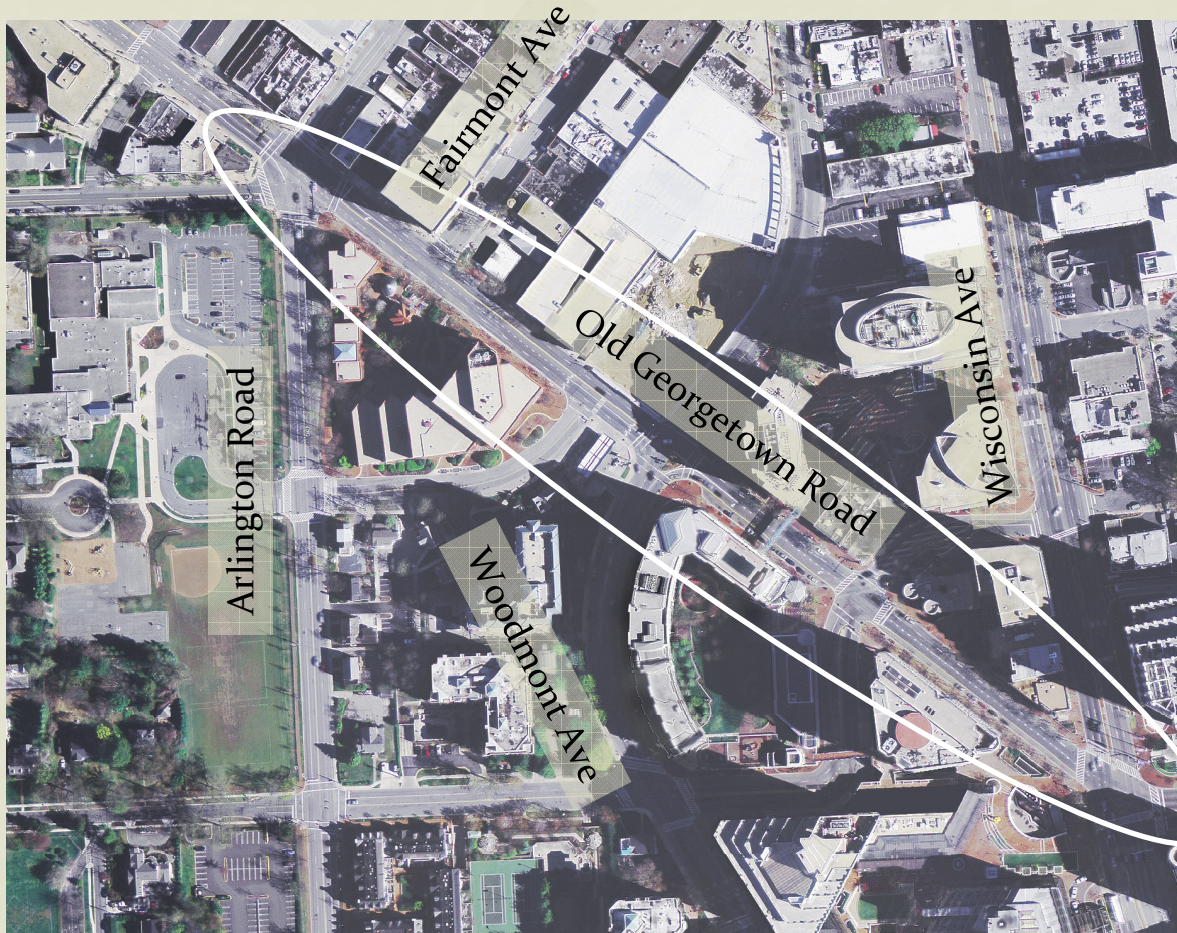
Agenda

- Project Overview
- Background
- Road Safety Audit Process Overview
- Comments

MCDOT Pedestrian RSA Corridors



Study Area

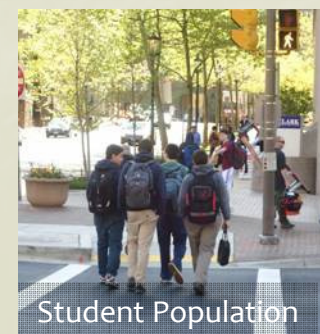
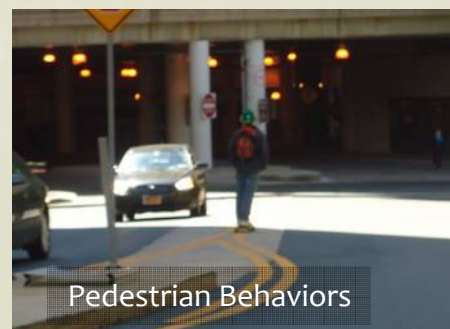
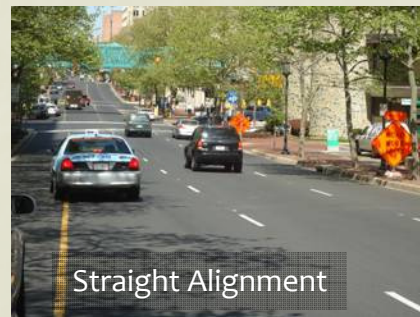
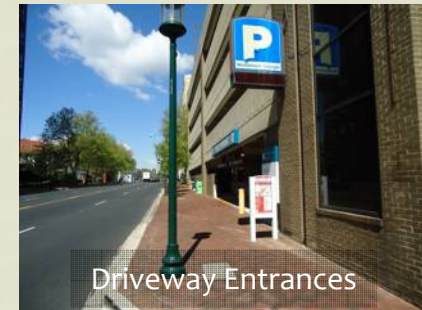


- Approx. 1/3 mile long
- Major Highway
- Four traffic signals
- Two unsignalized intersections
- 30 mph posted speed

Background

- Selected as High Incidence Area based on pedestrian collision density
- 15 pedestrian collisions over 5 years (2006-2010)
- Most crashes resulted in minor injuries
- Heavy student and commuter pedestrian activity related to land uses and public transportation
- Five-lane undivided section (Arlington Road to Woodmont Ave.).
- Three-lane undivided (Woodmont Ave. to Wisconsin Ave.) section with parking, loading, and transit lanes

Preliminary Observations



What is a Road Safety Audit?

A road safety audit is a formal safety performance examination of an existing or future road or intersection by an independent audit team.

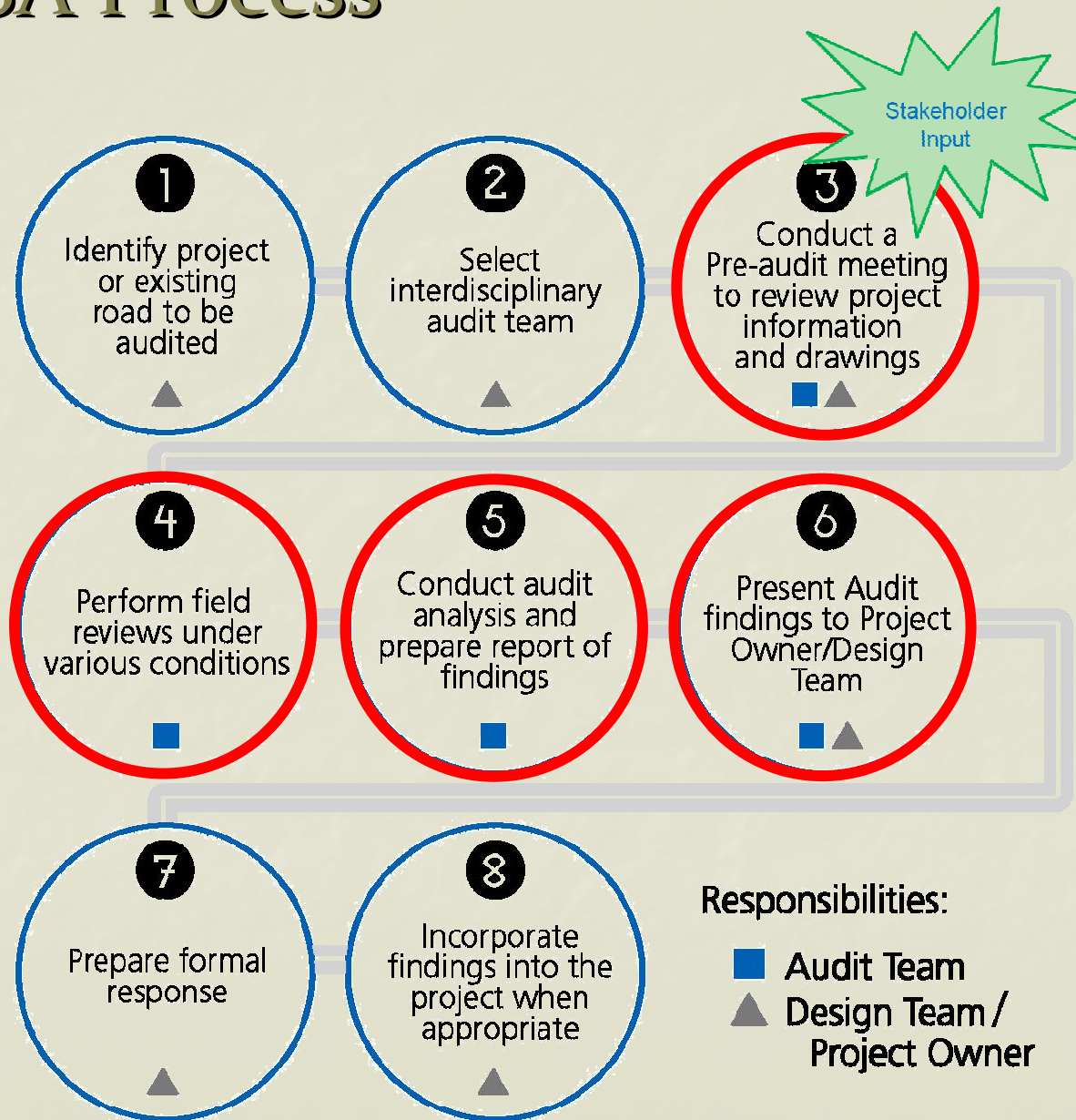
What is an RSA?

An RSA is a tool that:

- Is a formal process
- Focuses on safety issues
- Proactive review of observed and potential safety issues to reduce risk
- Considers various environmental conditions
- Considers all road users



RSA Process



RSA team will conduct Steps 3-6 over 2 day session

Review relevant data to include:

- Community input
- Maps/drawings
- Future plans
- Crash data
- Traffic volume (pedestrians and vehicles)
- Signal phasing and timing

4. Field Review

- Observe road user characteristics
- Observe surrounding land uses
- Observe link points to the adjacent transportation network



5. RSA Analysis

- Workshop setting
- Review background reports and design criteria
- Systematically review drawings and other information/data
- Identify, prioritize, and mitigate safety issues



6(a). Preliminary Findings Discussion

- RSA team, design team, owner
- Discuss preliminary findings and possible solutions
- Use results to write RSA report



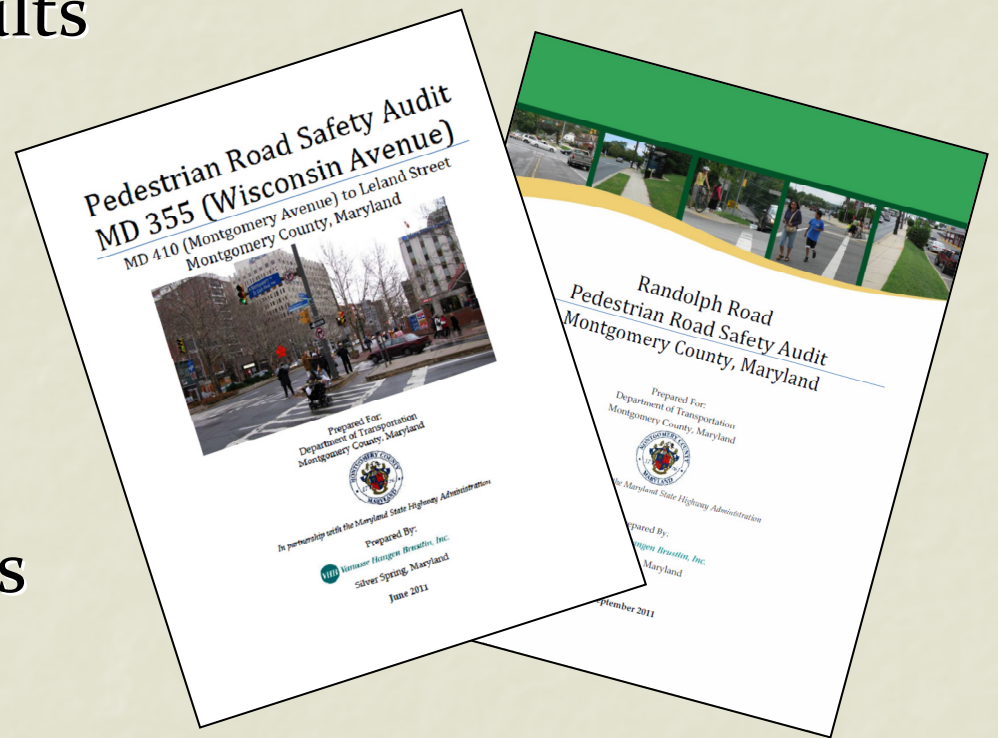
RSA Findings

**MD 500 (Queen's Chapel Road)
Hamilton Rd to Buchanan St**



6(b). RSA Report

- Documents the results of the RSA
- Identifies and prioritizes safety issues
- Includes suggestions for improvements



Potential RSA Team Members

- Maryland SHA
- Montgomery County Police Department
- Montgomery County DOT
- Neighboring Jurisdictions

Comments and Input



We appreciate your feedback!