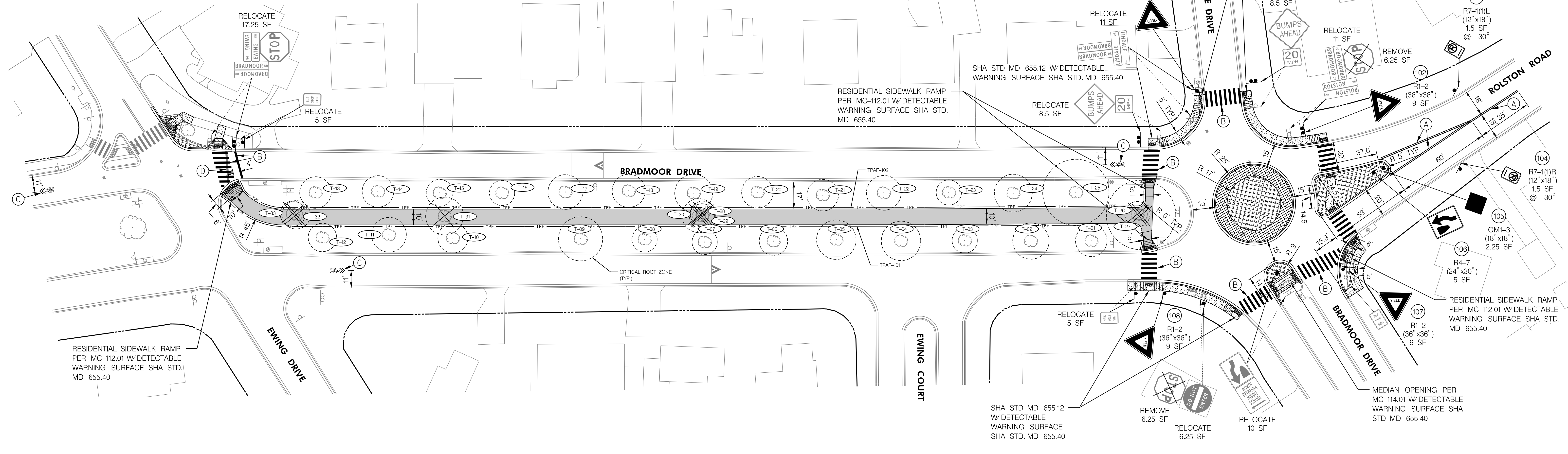
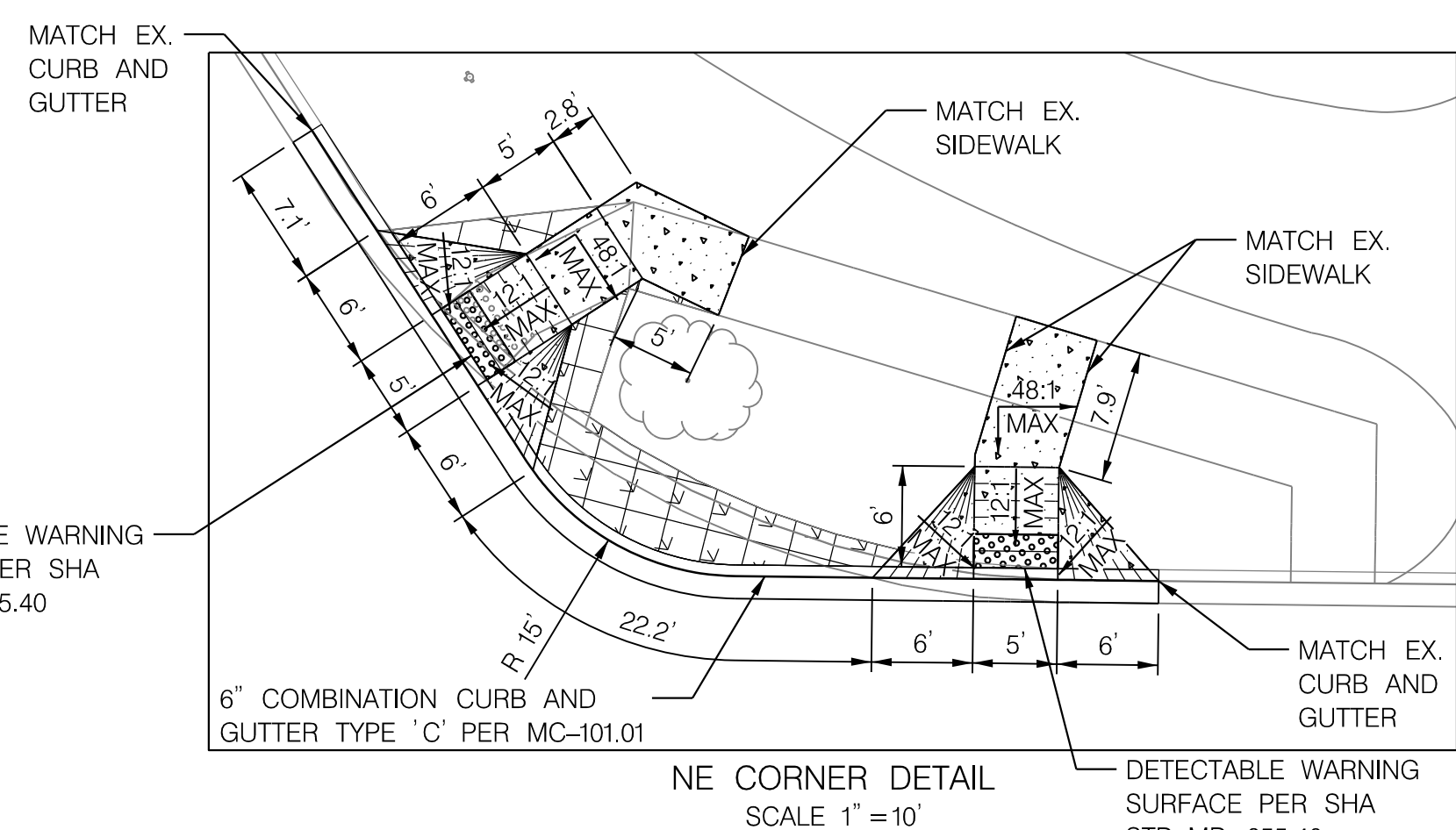
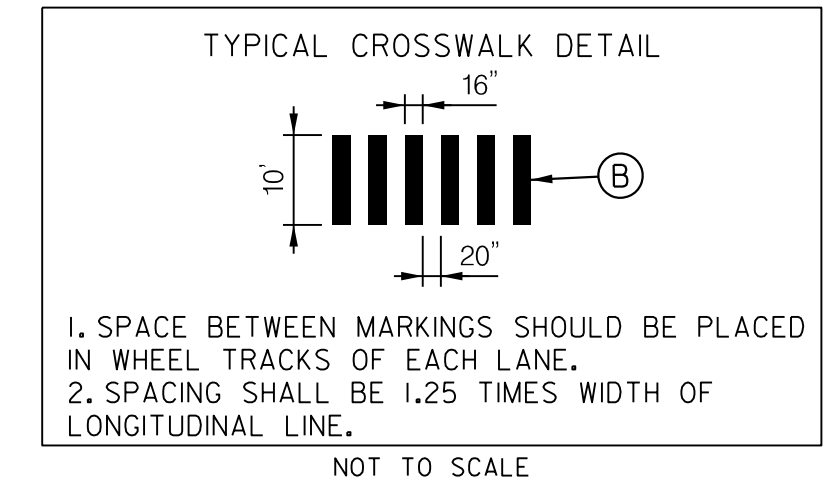


TREE ID #	BOTANICAL NAME/COMMON NAME	SIZE (DBH)	CONDITION	SPECIMEN TREE (Y/N)	STATUS	COMMENTS
T-01	NYSSA SYLVATICA/BLACK TUPELO	10.0"	GOOD	N	PROTECT	
T-02	NYSSA SYLVATICA/BLACK TUPELO	11.5"	GOOD	N	PROTECT	
T-03	NYSSA SYLVATICA/BLACK TUPELO	8.0"	GOOD	N	PROTECT	
T-04	NYSSA SYLVATICA/BLACK TUPELO	12.5"	GOOD	N	PROTECT	
T-05	NYSSA SYLVATICA/BLACK TUPELO	12.5"	GOOD	N	PROTECT	
T-06	NYSSA SYLVATICA/BLACK TUPELO	9.0"	GOOD	N	PROTECT	
T-07	NYSSA SYLVATICA/BLACK TUPELO	8.0"	GOOD	N	PROTECT	
T-08	NYSSA SYLVATICA/BLACK TUPELO	8.0"	GOOD	N	PROTECT	
T-09	NYSSA SYLVATICA/BLACK TUPELO	14.0"	VERY GOOD	N	PROTECT	
T-10	NYSSA SYLVATICA/BLACK TUPELO	9.5"	FAIR/GOOD	N	PROTECT	DEAD 4' BRANCH AT 7' HT
T-11	NYSSA SYLVATICA/BLACK TUPELO	11.0"	GOOD	N	PROTECT	
T-12	NYSSA SYLVATICA/BLACK TUPELO	9.0"	GOOD	N	PROTECT	
T-13	NYSSA SYLVATICA/BLACK TUPELO	10.0"	GOOD	N	PROTECT	
T-14	NYSSA SYLVATICA/BLACK TUPELO	10.0"	FAIR/GOOD	N	PROTECT	A FEW DEAD BRANCHES
T-15	NYSSA SYLVATICA/BLACK TUPELO	8.5"	GOOD	N	PROTECT	
T-16	NYSSA SYLVATICA/BLACK TUPELO	6.5"	FAIR/GOOD	N	PROTECT	IN SHADOW OF 36" PIN OAK
T-17	NYSSA SYLVATICA/BLACK TUPELO	11.0"	FAIR/GOOD	N	PROTECT	POWER LINES TOUCH TRUNK AT 10' HT
T-18	NYSSA SYLVATICA/BLACK TUPELO	10.5"	FAIR/GOOD	N	PROTECT	SOME LOWER DEAD BRANCHES
T-19	NYSSA SYLVATICA/BLACK TUPELO	12.0"	GOOD	N	PROTECT	
T-20	NYSSA SYLVATICA/BLACK TUPELO	10.0"	GOOD	N	PROTECT	
T-21	NYSSA SYLVATICA/BLACK TUPELO	10.0"	GOOD	N	PROTECT	
T-22	NYSSA SYLVATICA/BLACK TUPELO	11.0"	GOOD	N	PROTECT	
T-23	NYSSA SYLVATICA/BLACK TUPELO	8.0"	GOOD	N	PROTECT	
T-24	NYSSA SYLVATICA/BLACK TUPELO	12.0"	VERY GOOD	N	PROTECT	
T-25	QUERCUS PHELLOS/WILLOW OAK	21.0"	GOOD	N	PROTECT	
T-26	LAGERSTROEMIA SPP./CRAPE MYRTLE	7.6"	GOOD	N	REMOVE	(6) 3", (1) 2" TRUNK SURROUNDED BY (4) VIBURNUMS AND (3) NANDINA.
T-27	MORUS ALBA/WHITE MULBERRY	22.0"	POOR	N	REMOVE	TRUNK DIVIDED AT 2'; ONE HALF (16%), AND THE OTHER HALF (18%) SPLIT AT 4' HT. THRIVING, BUT COMPROMISED WHERE TRUNK SPLIT
T-28	BETULA SPP./BIRCH	6.5"	FAIR/GOOD	N	REMOVE	GROWING OUT OF OVERGROWN PLANTED ISLAND.
T-29	LAGERSTROEMIA SPP./CRAPE MYRTLE	5.25"	FAIR/GOOD	N	REMOVE	(1) 2" STEMS, SURROUNDED BY (3) NANDINA.
T-30	MORUS ALBA/WHITE MULBERRY	10.75"	FAIR/GOOD	N	REMOVE	10' AND 4" TRUNKS, GROWING IN OVERGROWN ISLAND, SOME VINE COVERAGE
T-31	LONICERA MAACKII/HONEYSUCKLE	12.0"	FAIR/GOOD	N	REMOVE	CLUMPS OF VIBURNUMS
T-32	LAGERSTROEMIA SPP./CRAPE MYRTLE	9.0"	GOOD	N	REMOVE	10' HT
T-33	PRUNUS SPP./WEeping CHERRY	7.5"	FAIR/GOOD	N	REMOVE	4.6', 3.8', 2.9', 3.3', 1.9" TRUNKS, MULTI-STEM TREE

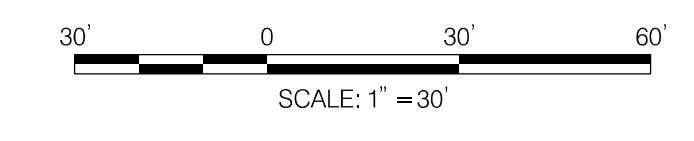
TREE PRESERVATION AREA FENCE (TPAF)	
603 L.F.	TPAF-101
596 L.F.	TPAF-102



- GENERAL NOTES**
1. MAINTENANCE OF TRAFFIC WILL BE HANDLED BY THE CONTRACTOR UTILIZING MONTGOMERY COUNTY STANDARD TYPICALS FOR TRAFFIC CONTROL.
  2. RIGHT OF WAY LINES SHOWN ARE NOT OFFICIAL RIGHT OF WAY AND EASEMENT INFORMATION. SEE APPROPRIATE RIGHT OF WAY PLATS.
  3. ALL PAVEMENT MARKINGS SHALL BE INSTALLED IN ACCORDANCE WITH MDSA STANDARDS.
  4. THE CONTRACTOR SHALL CENTER THE PROPOSED CROSSWALKS ON THE PROPOSED SIDEWALK RAMP.
  5. THE CONTRACTOR SHALL REFER TO FIGURE 9C-9 OF THE 2011 MARYLAND MUTCD FOR THE SHARED LANE PAVEMENT MARKING DETAIL.
  6. PROPOSED GEOMETRIC IMPROVEMENTS ARE BASED OFF AVAILABLE GIS MAPPING. THE CONTRACTOR SHALL LAYOUT THE PROPOSED GEOMETRIC IMPROVEMENTS PRIOR TO CONSTRUCTION. IF ANY CONFLICTS ARISE, THE CONTRACTOR SHALL NOTIFY THE PROJECT ENGINEER.



LEGEND	
	ASPHALT SHARED USE PATH
	CONCRETE SIDEWALK
	DETECTABLE WARNING SURFACE
	PAVEMENT/SIDEWALK REMOVAL
	TURFGRASS
	EXISTING TREE
	REMOVAL OF EXISTING TREE
	CRITICAL ROOT ZONE



FINAL REVIEW

PLOTTED: 5/6/2024  
FILE: I:\Projects\4019356\4019356\_0018\00\_CAD Models and Sheets\04\_OT\_Transportation\Bradmoor Drive Intersection Improvements\PLD-P001\_Bradmoor\_SUP.dgn

DEPARTMENT OF TRANSPORTATION  
DIVISION OF TRAFFIC ENGINEERING & OPERATIONS  
MONTGOMERY COUNTY, MARYLAND

TREE PROTECTION PLAN

BRADMOOR DRIVE  
INTERSECTION IMPROVEMENTS

SCALE 1" = 30'

TPP-01

misenarka