

**WELCOME!**

**MC DOT**

Montgomery County Department of Transportation  
www.montgomerycountymd.gov/mcdot



**Rock Creek Forest and Rosemary Hills Elementary Schools**  
**SAFE ROUTES TO SCHOOL ASSESSMENT**  
**OPEN HOUSE**



**MONTGOMERY COUNTY**  
**DEPARTMENT OF TRANSPORTATION**  
**Division of Traffic Engineering and Transportation**

**Safe Routes to School**  
**OPEN HOUSE MEETING**  
**DECEMBER 5, 2024**





# Rock Creek Forest and Rosemary Hills Elementary Schools

## Safe Routes to School Study



### MEETING AGENDA

Introduction

Walkability Studies

Rock Creek Forest ES and Rosemary Hills ES Study

Recently Completed and Planned Improvements

Opportunities for Pedestrian Safety Projects

Open Discussion

Project Timeline





# Rock Creek Forest and Rosemary Hills Elementary Schools

## Safe Routes to School Study

# MC DOT

Montgomery County Department of Transportation  
www.montgomerycountymd.gov/mcdot



### Introduction

Nima Upadhyay, SRTS Program Manager

Chares Freeman, Senior Planning Specialist

Will Wu, Consultant Engineer (RK&K) r

### Why are we here?

To present findings from the walkability study, present the list of safety improvements that will be pursued to improve safety of students walking and biking to school.

### What feedback do we want from today's meeting?

We want to understand and gather community feedback on the safety recommendations before pursuing them as some of these recommendations have tree and other impacts (gathering feedback at early stages help understand community safety needs)





# Rock Creek Forest and Rosemary Hills Elementary Schools

## Safe Routes to School Study




### What is a Walkability Study?


A walkability study is conducted to investigate the condition of existing infrastructure and propose improvements to provide safe and accessible routes for students walking and rolling to school. A study for each school is conducted within the entire "walking area" or "walkshed" as defined by Montgomery County Public Schools.




**Walking Areas Defined by MCPS**

- Elementary Schools: within one 1 mile
- Middle Schools: within 1.5 miles
- High Schools: within 2 miles



 **Data Collection**

- Observe school arrival and dismissal operations.
- Inventory existing infrastructure conditions.
- Coordinate with community stakeholders and school staff.
- Compile traffic and crash data as available.

 **Analysis**

- Summarize observations.
- Identify safety hazards, barriers to walking and gaps in the pedestrian network.
- Review pedestrian infrastructure, condition, accessibility.

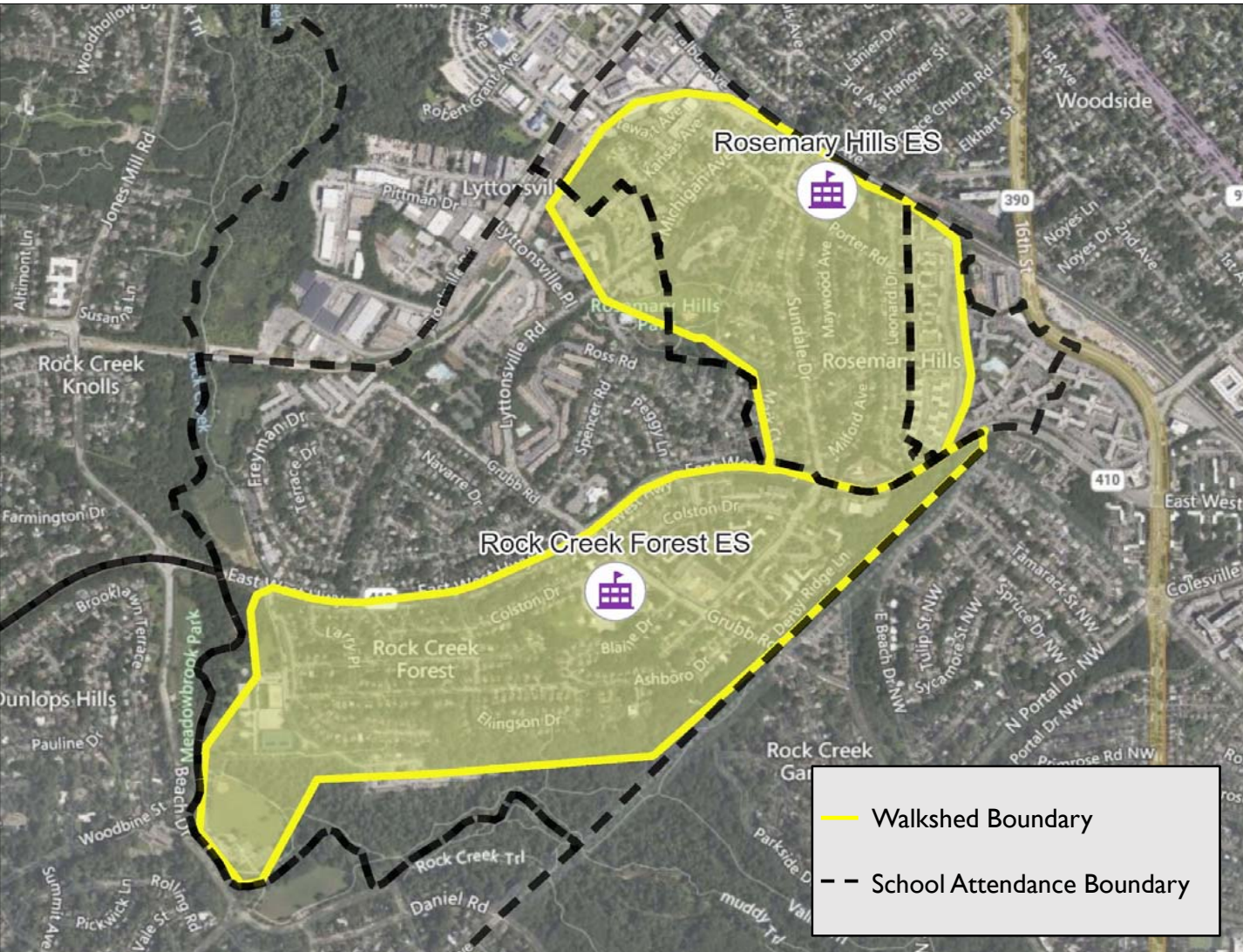
 **Recommendations**

- Prioritize short-term and long-term projects
- Review construction costs and implementation timeline



# Rock Creek Forest and Rosemary Hills Elementary Schools

## Safe Routes to School Study



### School Walkshed Summary

#### Rock Creek Forest ES

Total Students:  
699 (Pre-K thru 5)  
Bus rider: 283  
Potential Walkers: 416

#### Rosemary Hills ES

Total Students:  
511 (Pre-K thru 2)  
Bus rider: 280  
Potential Walkers: 231









# Rock Creek Forest and Rosemary Hills Elementary Schools

## Safe Routes to School Study



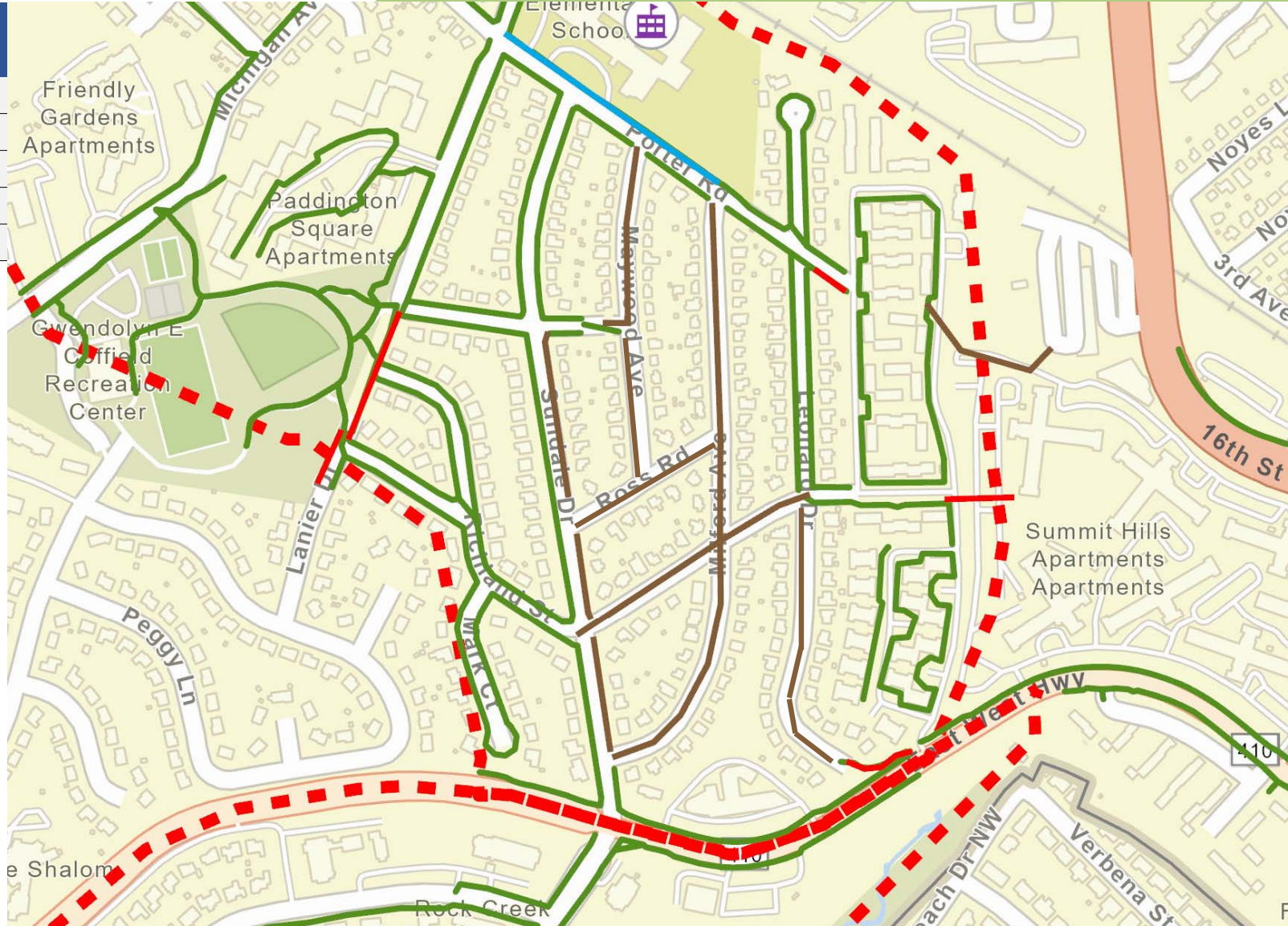


# Rock Creek Forest and Rosemary Hills Elementary Schools

## Safe Routes to School Study



Sidewalk Segment Gap	Sidewalk Length (LF)
1. Maywood Ave	980
2. Milford Ave	1,840
3. Ross Rd	500
4. Spencer Rd	740
5. Leonard Dr	875



- Missing Sidewalk
- Existing Sidewalk



**Rock Creek Forest and Rosemary Hills  
Elementary Schools**

**Safe Routes to School Study**

**SRTS Benefit-Impact Considerations**



Pedestrian  
Safety and  
Accessibility

Support  
Traffic  
Calming

School  
Operations

Separate  
Road Users

Street Trees

Driveways and  
Landscaping

On-Street  
Parking Supply





# Rock Creek Forest and Rosemary Hills Elementary Schools

## Safe Routes to School Study



### Sundale Dr Opportunities

- Improve pedestrian access
- Daylight intersections
- Traffic calming

**8700 Block Potential Impacts**  
5 driveways  
~ 1 parking space  
~ 1 street tree



**Ross Int Potential Impacts**  
2 driveways  
~ 2 parking spaces  
~ 0 street trees

**8500 Block Potential Impacts**  
1 driveway  
~ 0 parking spaces  
~ 18 street trees



**Spencer / Richland Int Potential Impacts**  
0 driveways  
~ 3 parking spaces  
~ 0 street trees





# Rock Creek Forest and Rosemary Hills Elementary Schools

## Safe Routes to School Study



### Porter Rd Opportunities

- Provide more awareness of pedestrian activity
- Enhance existing school crossing
- Provide dedicated and accessible space for the special needs access to RHES



**Porter Potential Impacts**  
0 driveways  
~ 0 parking spaces  
~ 1 street tree





# Rock Creek Forest and Rosemary Hills Elementary Schools

## Safe Routes to School Study



### Ross Rd Opportunities

- Transit access
- Missing connection for Maywood Ave and Milford Ave
- Separate pedestrian space along steep street segment
- Better control turning movements at intersections

**Ross Sidewalk Potential Impacts**  
4 driveways  
~ 0 parking spaces  
~ 5 street trees





# Rock Creek Forest and Rosemary Hills Elementary Schools

## Safe Routes to School Study



### Spencer Rd Opportunities

- Provides connectivity to local park
- Improve sight lines along Spencer Rd
- Better alert motorists to stop condition at Milford Ave





# Rock Creek Forest and Rosemary Hills Elementary Schools

## Safe Routes to School Study



### Maywood Ave and Milford Ave Opportunities

- Traffic calming
- Reinforce neighborhood character of streets

**Milford Potential Impacts**  
0 driveways  
~ 45 parking spaces  
0 street trees

**Maywood Potential Impacts**  
0 driveways  
~ 40 parking spaces  
0 street trees





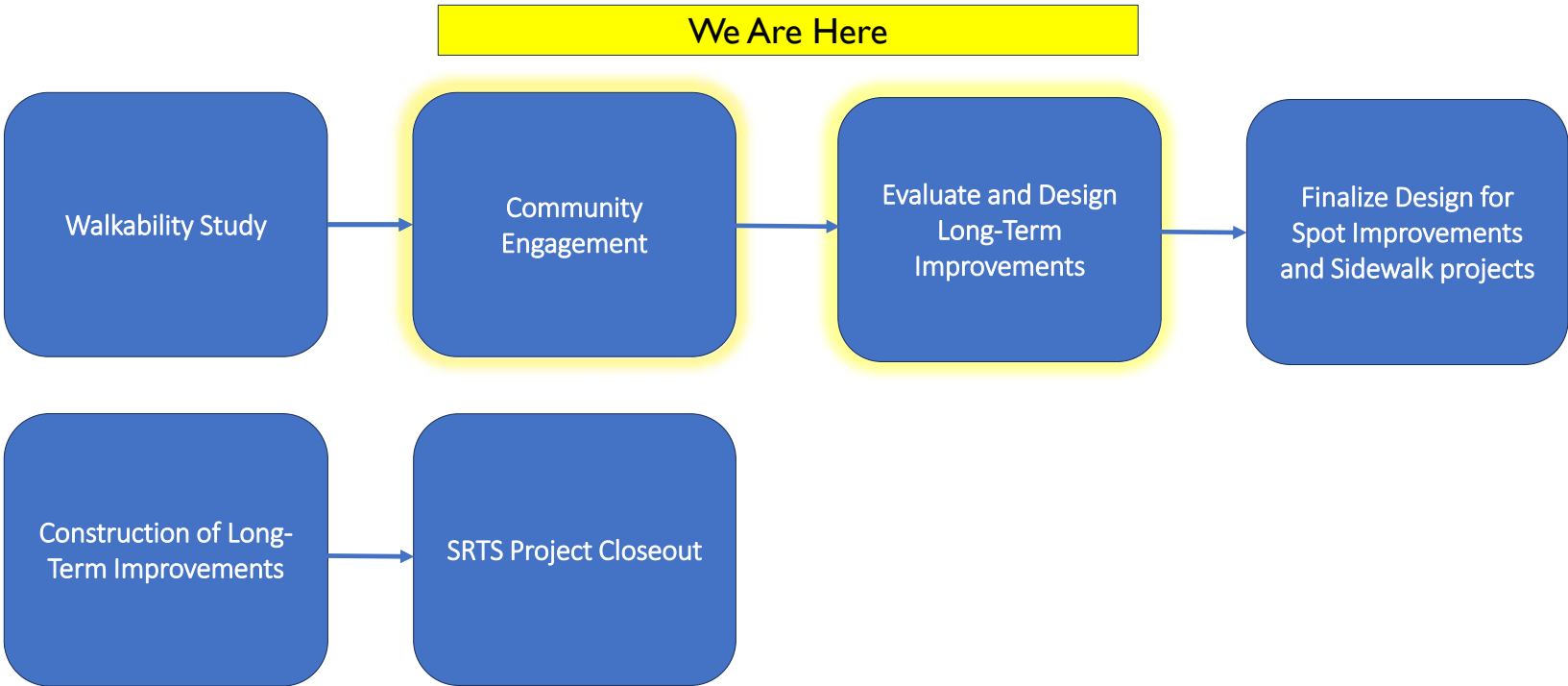
# Rock Creek Forest and Rosemary Hills Elementary Schools

## Safe Routes to School Study



### Timeline

Where we are in the SRTS walkability study process...





**Rock Creek Forest and Rosemary Hills  
Elementary Schools**

**Safe Routes to School Study**



## THANK YOU FOR ATTENDING Community Feedback

- If you wish to provide any written feedback, please submit your comments by:

**Friday January 10, 2024, by 5:00pm**

- Submissions can be made via:
- Email: [walkyourway@montgomerycountymd.gov](mailto:walkyourway@montgomerycountymd.gov) or via regular mail:
- Safe Routes to School Program
- ATTN: Charles Freeman
- 100 Edison Park Drive, 4<sup>th</sup> FL
- Gaithersburg, Maryland 20878



**Visit the Project Webpage!**

