



Montgomery County Department of Transportation
www.montgomerycountymd.gov/mcdot

WELCOME!



MONTGOMERY COUNTY
DEPARTMENT OF TRANSPORTATION

**NORTH CHEVY CHASE ELEMENTARY SCHOOL
WALKABILITY STUDY**

VIRTUAL PUBLIC MEETING

OCTOBER 19, 2023

We will begin shortly





Montgomery County Department of Transportation
www.montgomerycountymd.gov/mcdot

WELCOME!



MONTGOMERY COUNTY
DEPARTMENT OF TRANSPORTATION

**NORTH CHEVY CHASE ELEMENTARY SCHOOL
WALKABILITY STUDY FOLLOW UP**

VIRTUAL PUBLIC MEETING

OCTOBER 19, 2023

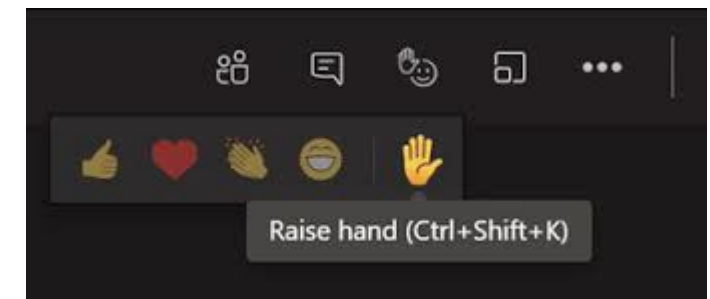


North Chevy Chase Elementary School Safe Routes to School (SRTS) Walkability Study



Meeting Rules

- Tonight's presentation will be posted on the project webpage.
- All participants will be muted until it is their time to provide public comments.
- During open discussion session **please raise your hand**, commenters will be called upon and unmuted in the order in which they registered to speak.
- Spanish translation is provided.



North Chevy Chase Elementary School Safe Routes to School (SRTS) Walkability Study



Meeting Agenda

- Introduction
- Walkability Study
- Recommendations
 - Short Term Recommendations
 - Long Term Recommendations
- Open Discussion
- Project Timeline



North Chevy Chase Elementary School Safe Routes to School (SRTS) Walkability Study



What is a Walkability Study?

A walkability study is conducted to investigate the condition of existing infrastructure and propose improvements to provide safe and accessible routes for students walking and rolling to school. A study for each school is conducted within the entire "walking area" or "walkshed" as defined by Montgomery County Public Schools.



Walking Areas Defined by MCPS

Elementary Schools: within one 1 mile
Middle Schools: within 1.5 miles
High Schools: within 2 miles



Data Collection

- Observe school arrival and dismissal activities / operations
- Coordinate and solicit feedback from school staff, crossing guards, and neighborhood residents
- Review street networks for pedestrian safety, walkability and relevant traffic and crash data.



Analysis

- Summarize observations
- Identify safety hazards, barriers to walking and gaps in the pedestrian network
- Review pedestrian infrastructure, condition, accessibility



Recommendations

- Prioritize short-term and long-term projects
- Review construction costs and implementation timeline



North Chevy Chase Elementary School Safe Routes to School (SRTS) Walkability Study



Study Summary

- Completed in 2019
- School Enrollment (2023)
 - 221 students 3 thru 5th
 - 116 students provided busing
 - 105 students potentially walk/roll



Walkshed Boundary



Village of North Chevy Chase



North Chevy Chase Elementary School Safe Routes to School (SRTS) Walkability Study



Observations



North Chevy Chase Elementary School Safe Routes to School (SRTS) Walkability Study



Recommendations

- Short Term
- Long Term



North Chevy Chase Elementary School Safe Routes to School (SRTS) Walkability Study

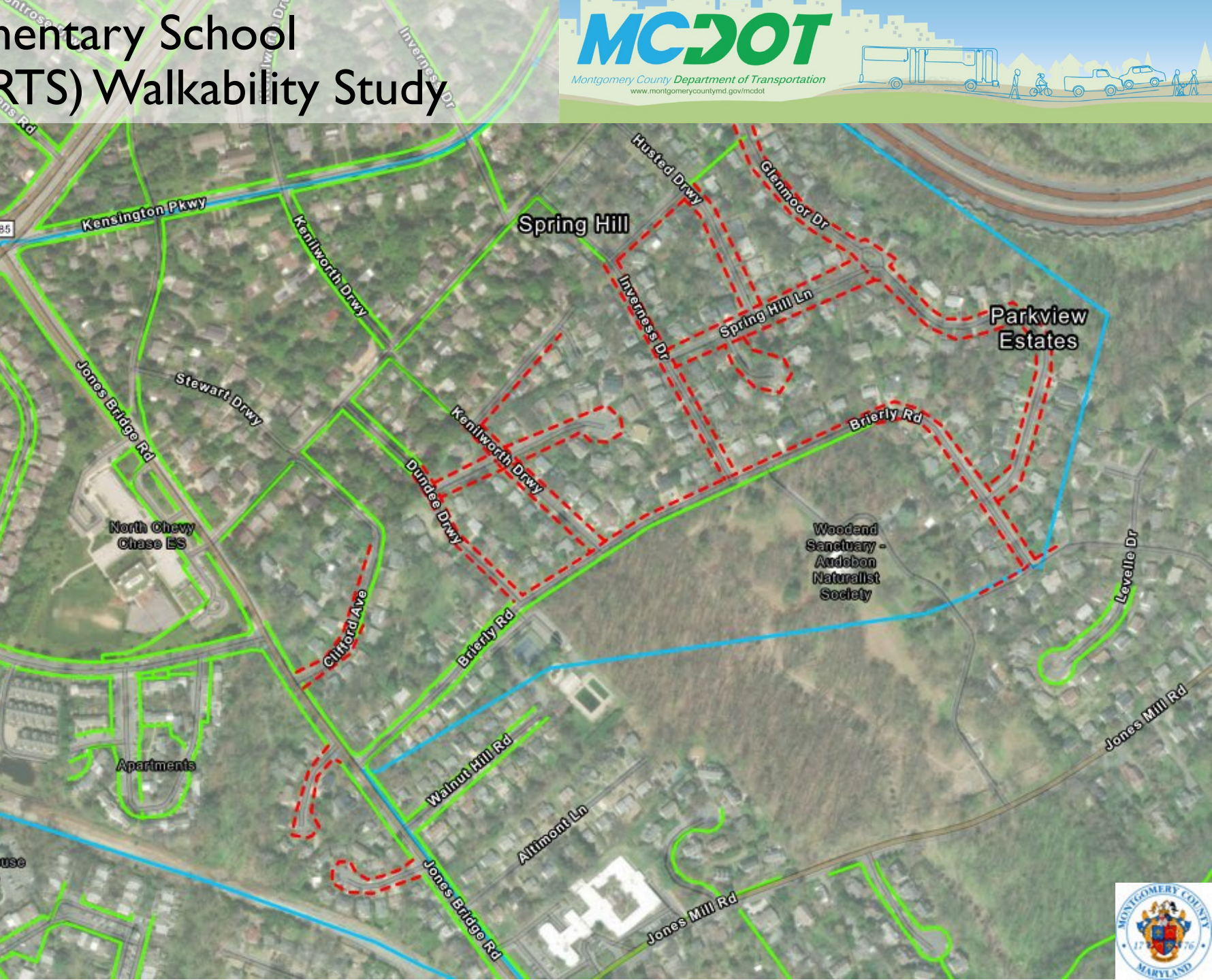


- Pavement markings, signing, and ADA ramps.

North Chevy Chase Elementary School Safe Routes to School (SRTS) Walkability Study



Sidewalk Segment Gap	Sidewalk Length (LF)
Brierly Ct	725
Brierly Rd	2,850
Clifford Ave (1)	815
Clifford Ave (2)	400
Clifford Ave (3)	300
Dundee Drwy	1,110
Faircastle / Glenmoor Dr	4,900
Husted Drwy	925
Inverness Dr	1,625
Jones Bridge Ct	700
Kenilworth Drwy	1,175
McGregor Dr	1,425
Spring Hill Ct	550
Spring Hill Ln	1,425
Village Park Dr	1,475
Woodhollow Dr	325



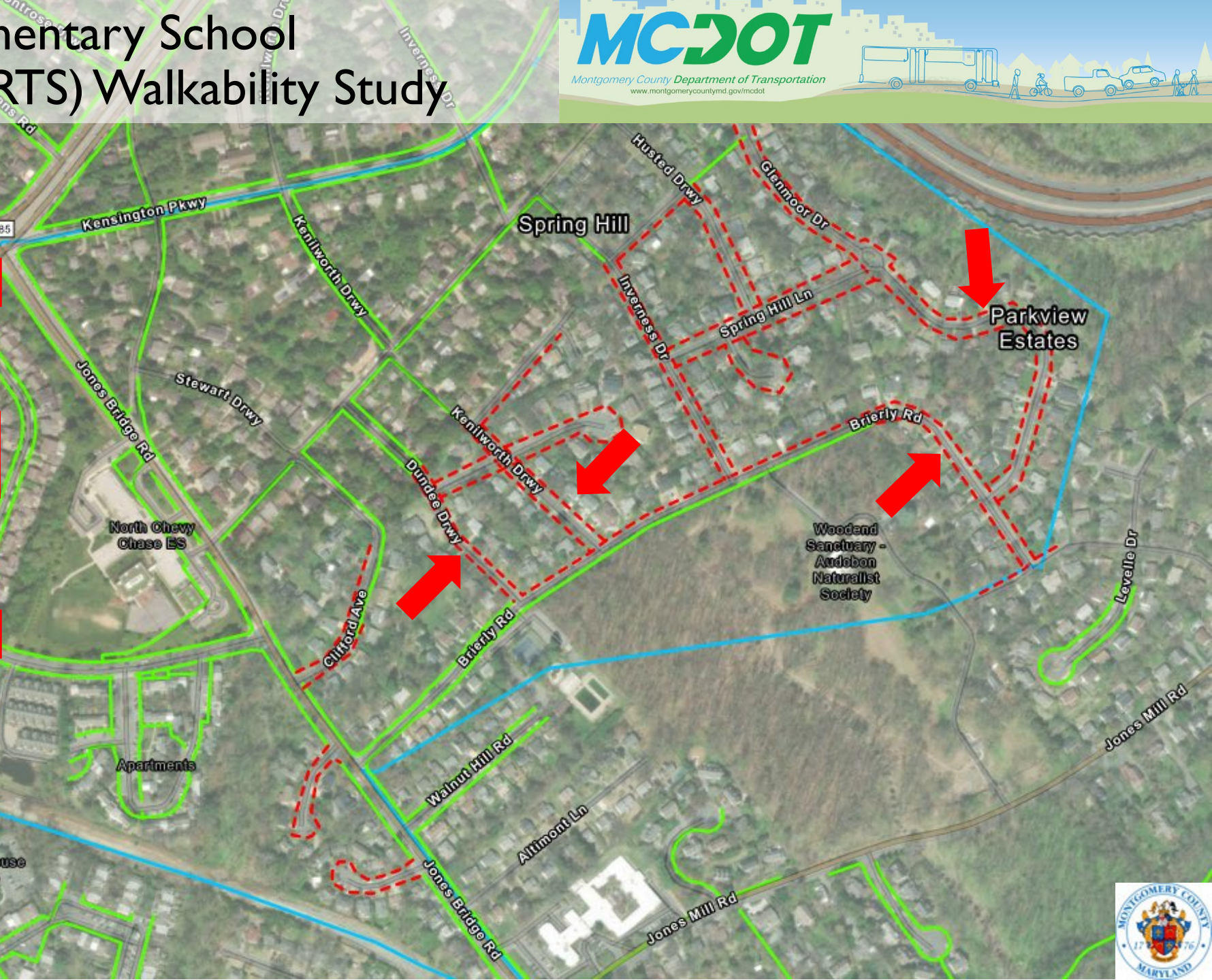
Sidewalk Gaps



North Chevy Chase Elementary School Safe Routes to School (SRTS) Walkability Study



Sidewalk Segment Gap	Sidewalk Length (LF)
Brierly Ct	725
Brierly Rd	2,850
Clifford Ave (1)	815
Clifford Ave (2)	400
Clifford Ave (3)	300
Dundee Drwy	1,110
Faircastle / Glenmoor Dr	4,900
Husted Drwy	925
Inverness Dr	1,625
Jones Bridge Ct	700
Kenilworth Drwy	1,175
McGregor Dr	1,425
Spring Hill Ct	550
Spring Hill Ln	1,425
Village Park Dr	1,475
Woodhollow Dr	325



Sidewalk Gaps



North Chevy Chase Elementary School Safe Routes to School (SRTS) Walkability Study



Brierly Road

- Existing ROW provides space for sidewalks and grass buffer
- South side (odd house numbers) may be more desirable to provide connectivity to existing sidewalk down to the Woodend Sanctuary
- Sidewalk would likely impact several trees near curve



Looking west from Woodhollow Dr



Looking west from Glenmoor Dr

- North side (even house numbers) would require 500 LF more than south side to connect facilities
- Speed humps are installed along Brierly Rd
- 60' ROW provides adequate space for street tree replacements



North Chevy Chase Elementary School Safe Routes to School (SRTS) Walkability Study



Glenmoor Drive

- Existing ROW provides space for sidewalk and grass on either side
- East of Spring Hill Ln, the south side (even house numbers) is likely less impactful
- Utility poles both sides



Looking north from Brierly Rd

Glenmoor Drive / Faircastle Drive

- West of Spring Hill Rd, Glenmoor Dr has many street trees close to the curb
- As does Faircastle Dr
- Desirable connectivity to footpath to Kensington Pkwy



Looking east from Faircastle Dr



North Chevy Chase Elementary School Safe Routes to School (SRTS) Walkability Study

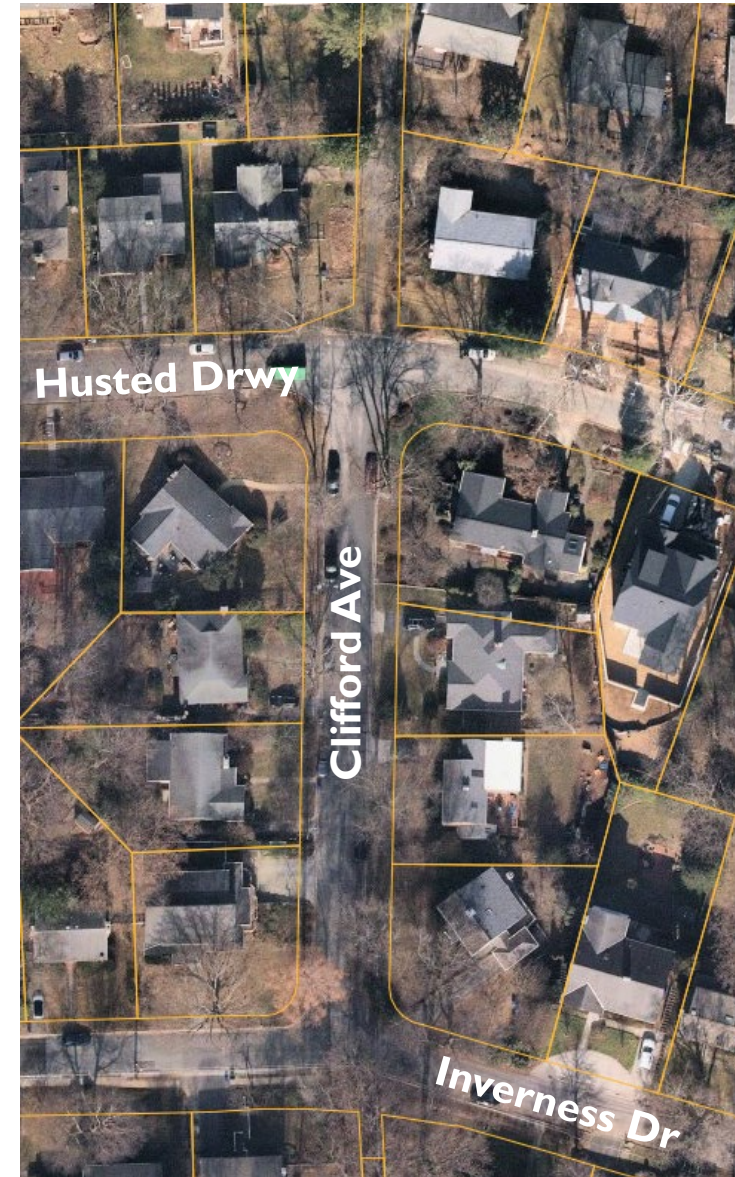


Clifford Avenue

- Existing ROW provides space for sidewalk
- Many constraints on both sides of the street
- Footpath exists north of Husted Drwy
- Sidewalk possible if street narrowed or converted to one-way



Looking north from Inverness Dr



North Chevy Chase Elementary School Safe Routes to School (SRTS) Walkability Study



Inverness Drive

- Existing ROW provides space for sidewalk on either side
- Many constraints on both sides of the street, which is already narrow
- Several properties have decorative hardscaping
- Desirable to provide connectivity to sidewalk network that stops at the Village of Chevy Chase boundary
- Inverness Dr also provides access to the 33 Route RideOn stop along Kensington Pkwy



Looking west from Brierly Rd



North Chevy Chase Elementary School Safe Routes to School (SRTS) Walkability Study



Kenilworth Driveway

- Existing ROW provides space for sidewalks and grass buffer on either side
- Several mature street trees
- Street trees in front of 3408 Kenilworth conflict with overhead utility lines
- Segment between Clifford and McGregor may require street narrowing to avoid impacts to adjacent property



Looking east from McGregor Dr



Looking west from Brierly Rd



Looking west from McGregor Dr



North Chevy Chase Elementary School Safe Routes to School (SRTS) Walkability Study



Dundee Driveway

- Existing ROW provides space for sidewalks and grass buffer on either side
- Several mature street trees
- Street trees in front of 3408 Kenilworth conflict with overhead utility lines
- Village of Chevy Chase provides sidewalk along both sides of Dundee Drwy, 75 ft west of McGregor Dr



Looking west from Brierly Rd



Looking west from McGregor Dr



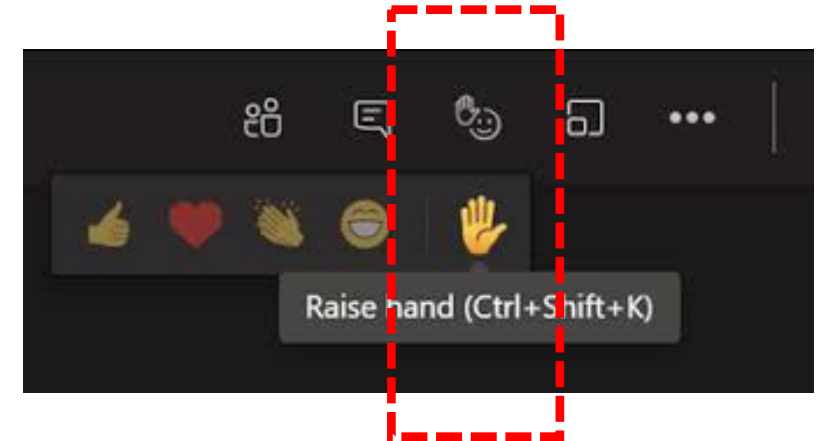
North Chevy Chase Elementary School Safe Routes to School (SRTS) Walkability Study



Open Discussion

- **Sidewalk gaps**
- **Other considerations?**

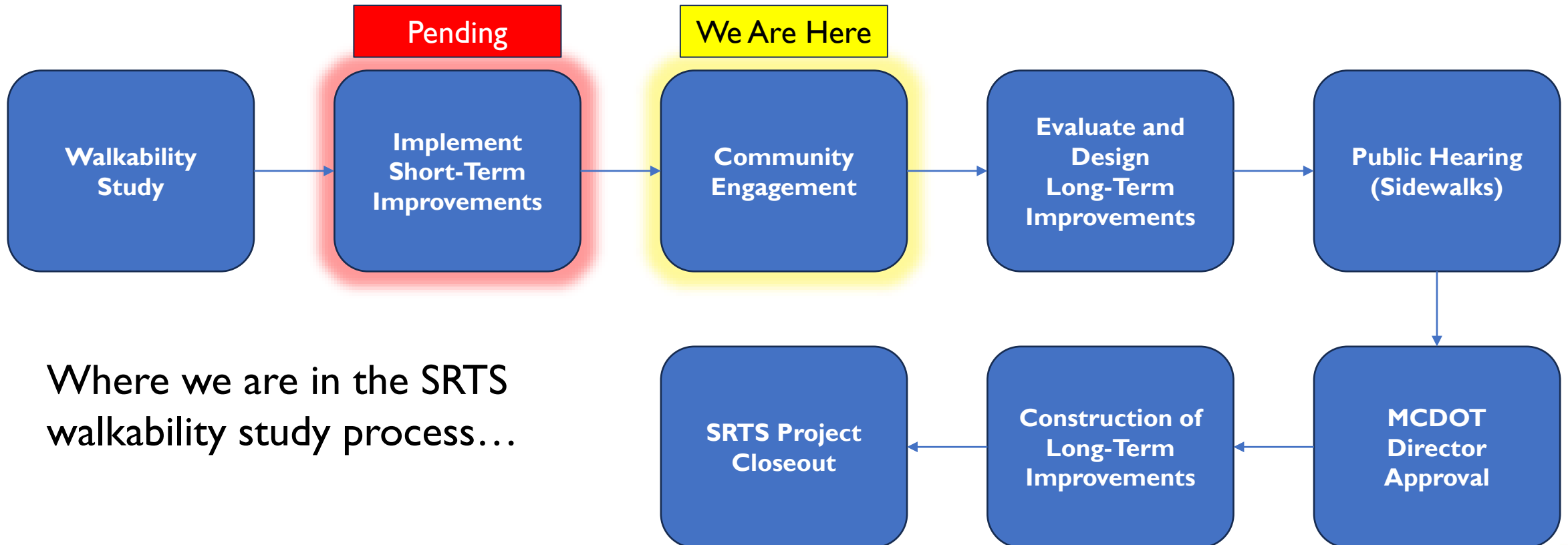
To provide your comment, please raise your hand and we will unmute.



North Chevy Chase Elementary School Safe Routes to School (SRTS) Walkability Study



Timeline



Where we are in the SRTS walkability study process...



North Chevy Chase Elementary School Safe Routes to School (SRTS) Walkability Study



THANK YOU FOR ATTENDING Community Feedback

If you wish to provide any written feedback, please submit your comments by:

Wednesday, October 25, 2023, by 5:00pm

Submissions can be made via:

Email: walkyourway@montgomerycountymd.gov or via regular mail:

Safe Routes to School Program

ATTN: Nima Upadhyay

100 Edison Park Drive, 4th FL

Gaithersburg, Maryland 20878

