

# Montgomery County Department of Transportation MD 112 (Seneca Road) at Esworthy Road Intersection Improvements



January 22, 2024

PLEASE NOTE THIS MEETING IS BEING RECORDED

# Montgomery County Department of Transportation

## MD 112 (Seneca Road) at Esworthy Road

### Intersection Improvements

#### **Project Overview**

1. Geometric issues causing traffic safety concerns:
  1. Existing “Y” configuration
  2. Multiple Conflict Points
  3. Insufficient Sight Distance for WB Esworthy Road LT onto SB MD 112



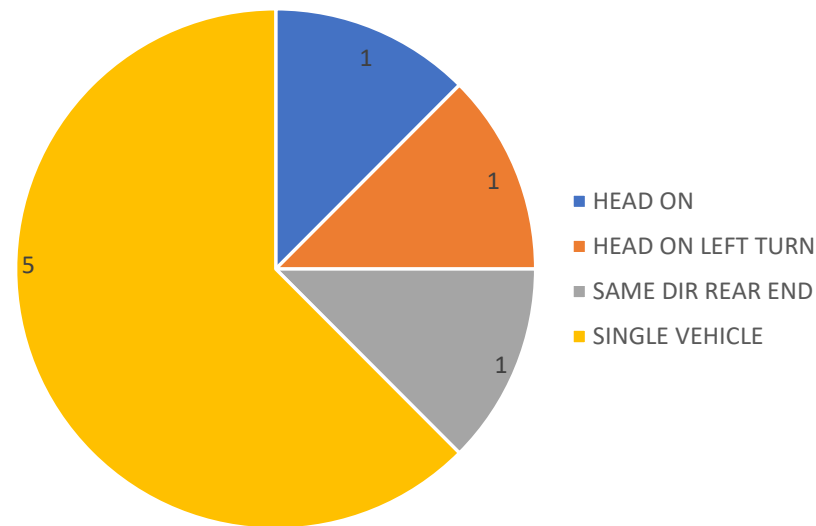
WB LT – Looking north along MD 112

# Montgomery County Department of Transportation MD 112 (Seneca Road) at Esworthy Road Intersection Improvements

## Existing Crash History Data

1. 5-year review – Nov. 2016 to Nov. 2020
2. 8 Total Crashes Reported
  - 5 – Injury Crash
  - 3 – Property Damage
3. Weather Conditions
  - 5 – Clear Conditions
  - 1 – Cloudy
  - 1 – Raining
  - 1 – Snow
4. Time of Day
  - 6 – Daylight
  - 1 – Dark (No Lights)
  - 1 – Dawn

Count of Collision Type



# Montgomery County Department of Transportation

## MD 112 (Seneca Road) at Esworthy Drive

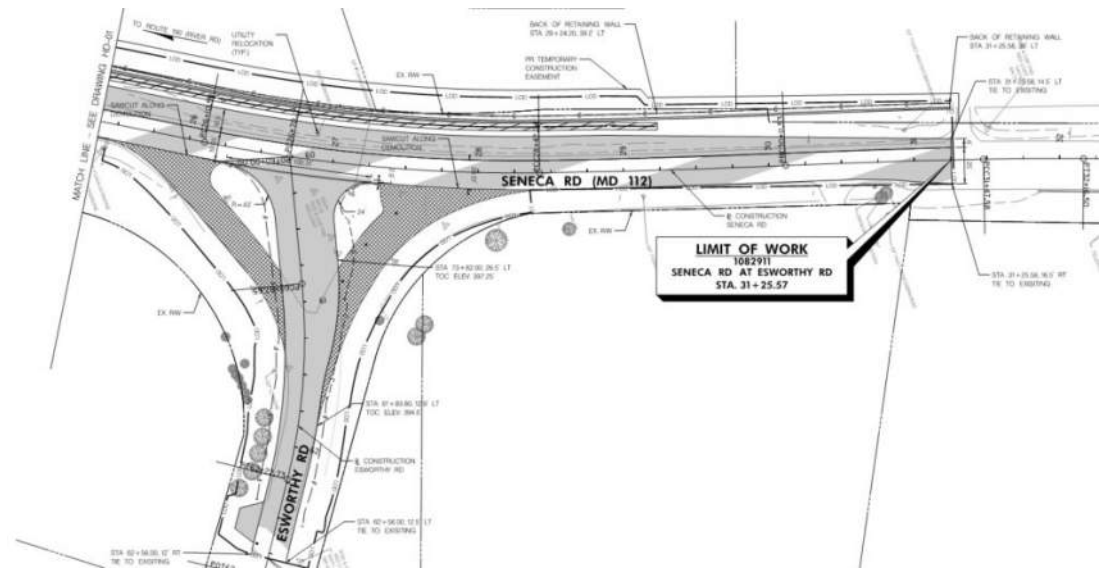
### Intersection Improvements

#### PROS

1. Replaces existing “Y” intersection with traditional “T” intersection
2. Provides By-Pass lane for SB MD 112

#### CONS

1. Requires Right-of-Way on the west side of MD 112
2. Significant grading along the west side of MD 112 requires retaining wall up to 10 ft. high
3. Intersection Sight Distance does not meet AASHTO guidelines



“T” Intersection Design



# Montgomery County Department of Transportation MD 112 (Seneca Road) at Esworthy Road Intersection Improvements

## Proposed Roundabout

1. Reduces Speed at the intersection
2. Mitigates Intersection Sight Distance issues
3. Improves Traffic Safety by reducing total vehicle conflict points
4. Improves Traffic Operations by eliminating the unnecessary stops

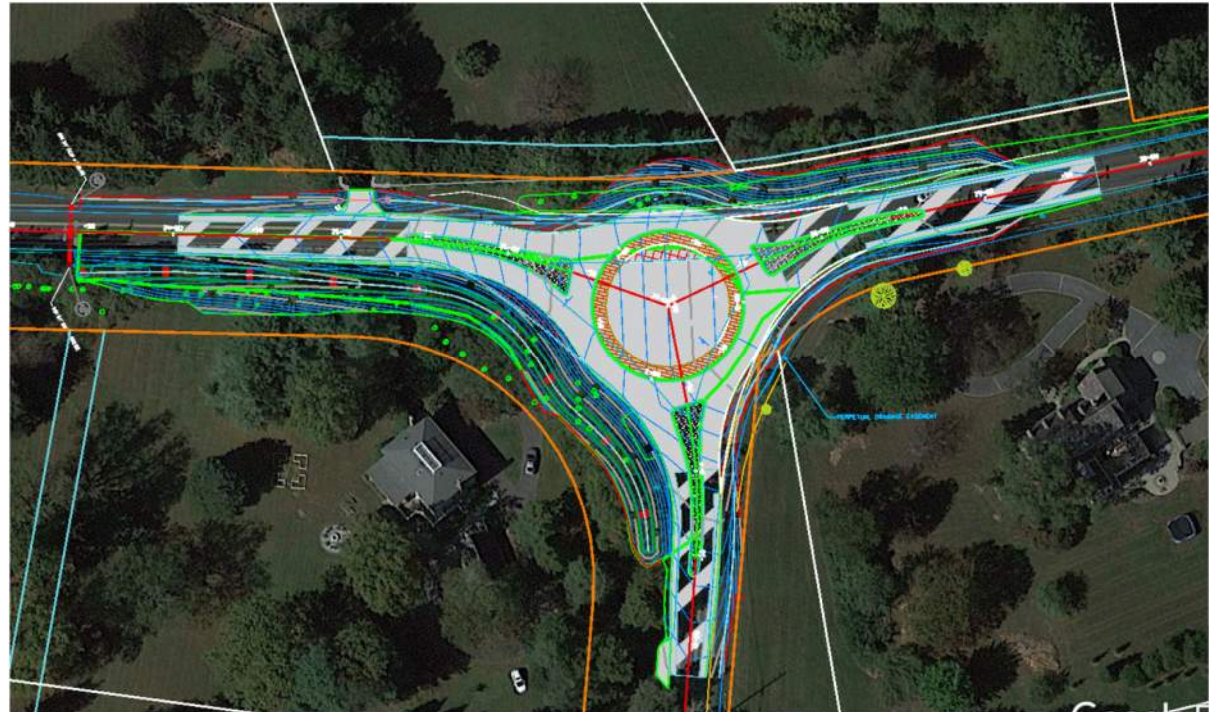


Roundabout Concept Design

# Montgomery County Department of Transportation MD 112 (Seneca Road) at Esworthy Road Intersection Improvements

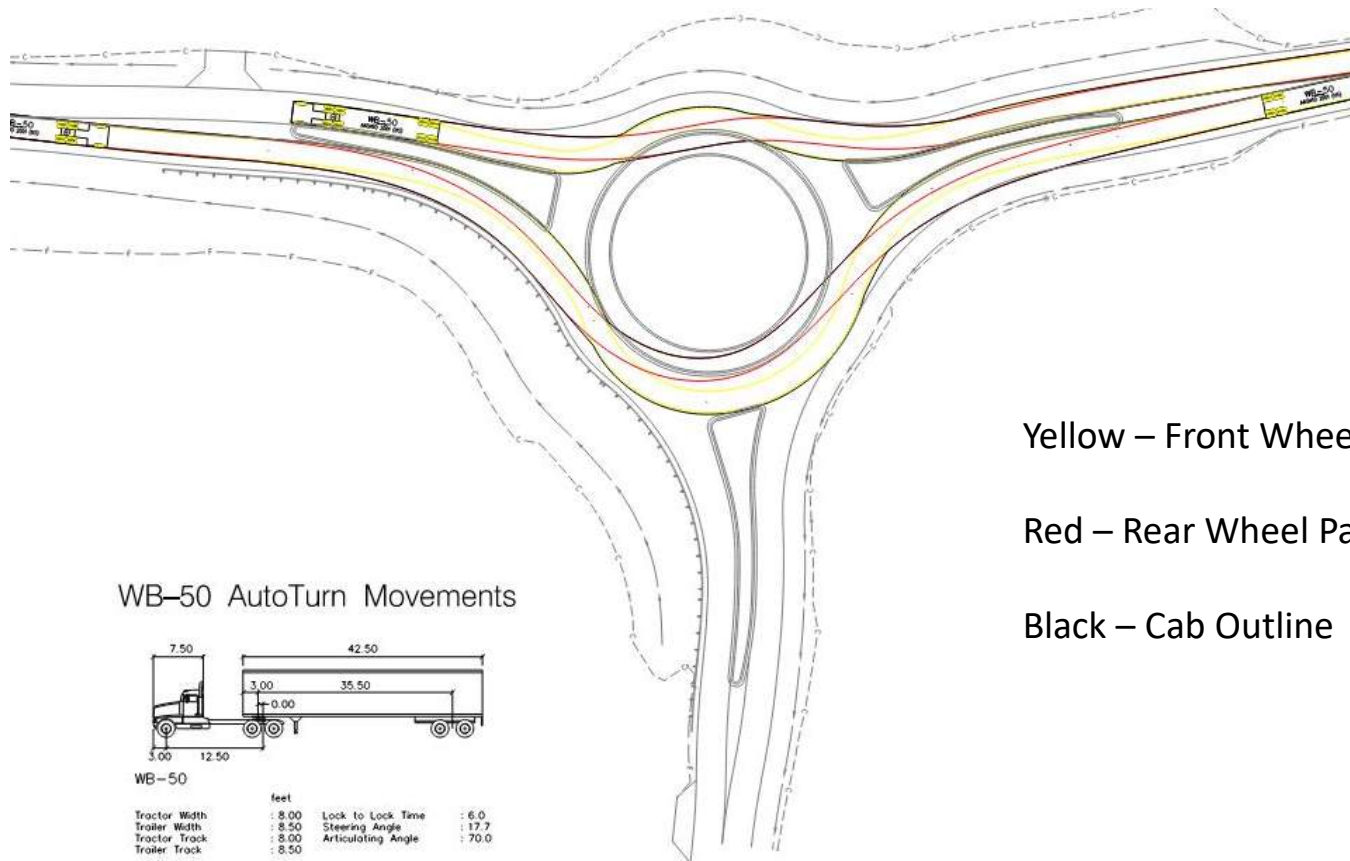
## **Roundabout Design**

1. Inscribed Diameter = 120 ft.
2. Travel lane width – 15 ft.
3. Truck Apron Width – 8 ft.
4. Concrete Splitter Islands on all approaches
5. New Streetlighting
6. Existing tree clearing and new Landscaping
7. Re-grading existing roadside conveyance ditches
8. Construction of a new Stormwater Management Facility in SE corner
  1. Bio-swale



Current Design

# Montgomery County Department of Transportation MD 112 (Seneca Road) at Esworthy Road Intersection Improvements

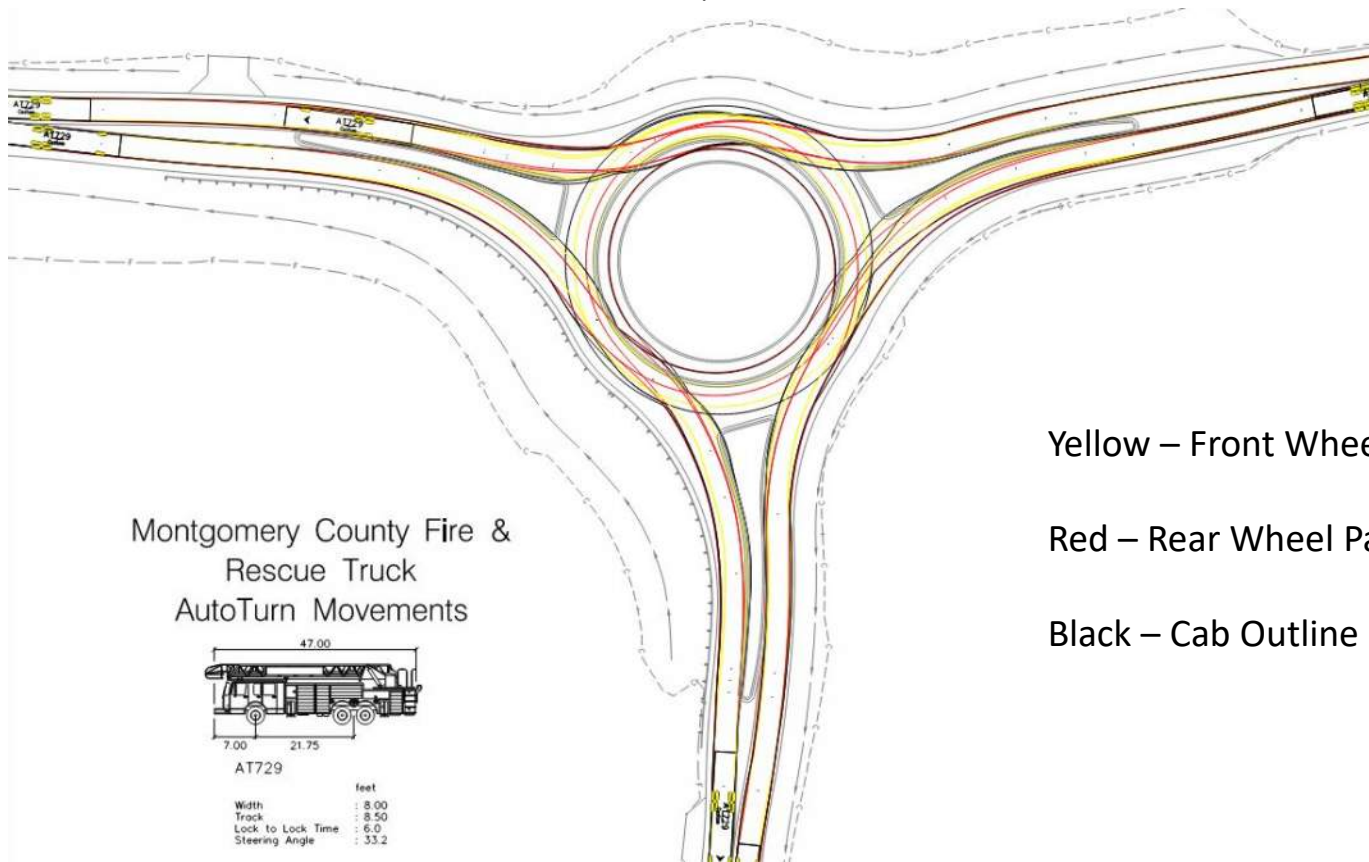


Yellow – Front Wheel Path

Red – Rear Wheel Path

Black – Cab Outline

# Montgomery County Department of Transportation MD 112 (Seneca Road) at Esworthy Road Intersection Improvements





# Montgomery County Department of Transportation MD 112 (Seneca Road) at Esworthy Road Intersection Improvements





# Montgomery County Department of Transportation MD 112 (Seneca Road) at Esworthy Road Intersection Improvements





# Montgomery County Department of Transportation MD 112 (Seneca Road) at Esworthy Road Intersection Improvements





# Montgomery County Department of Transportation MD 112 (Seneca Road) at Esworthy Road Intersection Improvements





# Montgomery County Department of Transportation MD 112 (Seneca Road) at Esworthy Road Intersection Improvements



EXISTING CONDITIONS  
LOOKING NORTH



# Montgomery County Department of Transportation MD 112 (Seneca Road) at Esworthy Road Intersection Improvements



# Montgomery County Department of Transportation MD 112 (Seneca Road) at Esworthy Road Intersection Improvements



# Montgomery County Department of Transportation MD 112 (Seneca Road) at Esworthy Road Intersection Improvements

