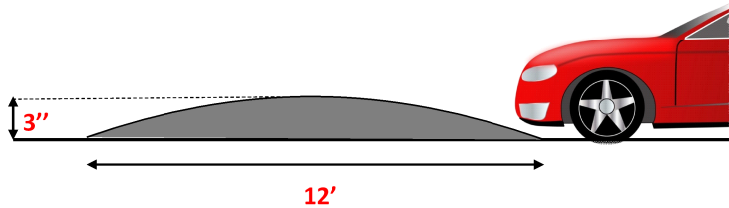


# Speed Hump # 1



All Speed Humps are Parabolic as shown below

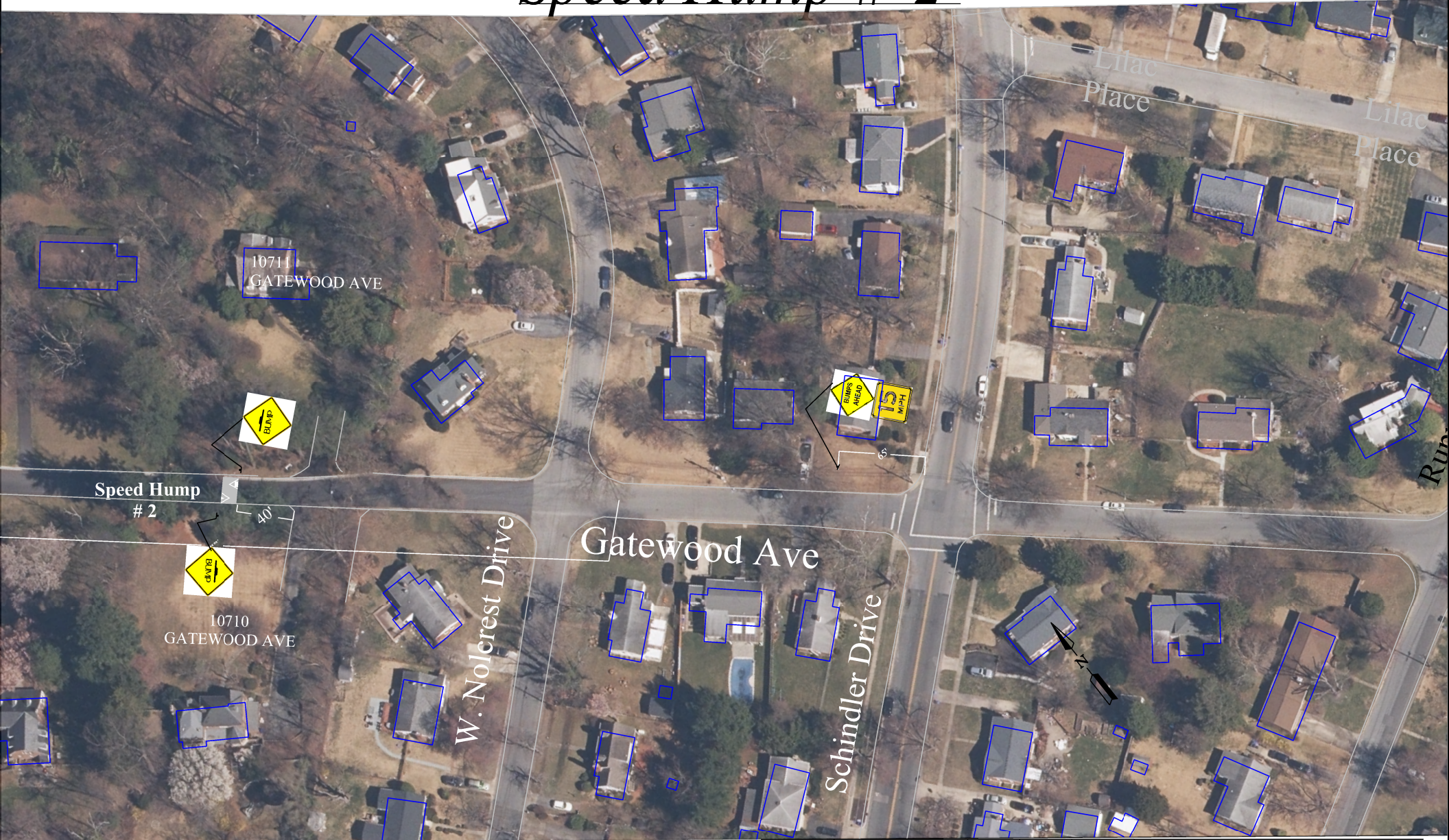


Distance in the drawing are approximate

						Traffic Engineering and Operations Montgomery County Maryland
						Gatewood Avenue Speed Hump Location Plan
						Approved - Area Engineer, Traffic Engineering Studies Section



# Speed Hump # 2



						Traffic Engineering and Operations Montgomery County Maryland
						Gatewood Avenue Speed Hump Location Plan
						Approved - Area Engineer, Traffic Engineering Studies Section