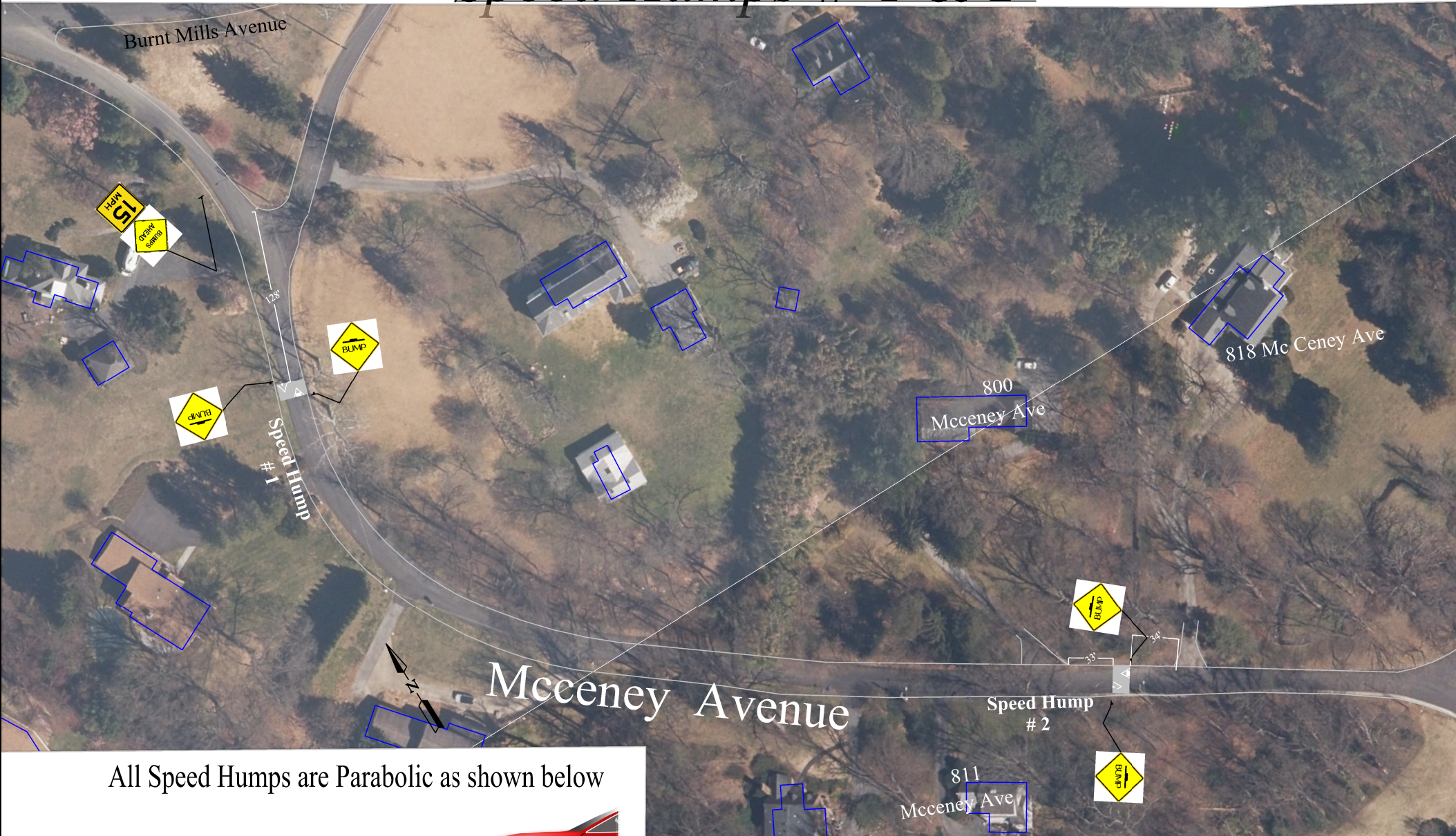
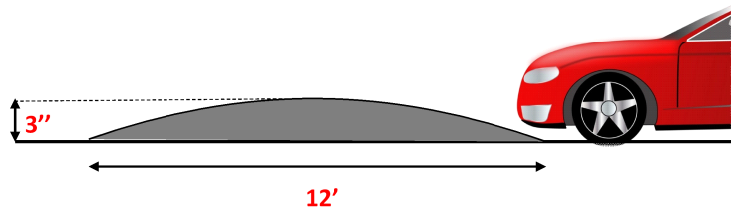


# Speed Humps # 1 & 2



All Speed Humps are Parabolic as shown below



Distance in the drawing are approximate

					Traffic Engineering and Operations Montgomery County Maryland
					Mcceney Avenue Speed Hump Location Plan
					Approved - Area Engineer, Traffic Engineering Studies Section



# Speed Hump # 3



						Traffic Engineering and Operations Montgomery County Maryland
						Mcceney Avenue Speed Hump Location Plan
						Approved - Area Engineer, Traffic Engineering Studies Section



# Speed Hump # 4



						Traffic Engineering and Operations Montgomery County Maryland
						Mcceny Avenue Speed Hump Location Plan
						Approved - Area Engineer, Traffic Engineering Studies Section