

# SCHOOL-RELATED CRASH INFRASTRUCTURE REVIEW

**Location:** Dayton Street at Windham Lane

**Crash Date:** December 16, 2024

**Crash Time:** 6:40 AM

**Local Case No.:** 240060012

**Review Date:** July 18, 2025

## **Description of Incident**

On Monday, December 16, 2024, at approximately 6:40 AM, a school bus was traveling northbound along Dayton Street when it struck a pedestrian running toward it. The crash report indicated the subject location occurred within an unmarked crosswalk. The school bus was making a left turn, and the rear of the vehicle likely swung out and hit the student chasing after the bus on foot. The motorist was unaware of the collision and left the scene, no witnesses or video footage was available. The crash report indicated that the pedestrian suffered minor injuries. It was dark when the crash occurred, weather conditions were clear, and the roadway surface was dry.

**Figure 2** illustrates the crash location and direction of pedestrian and vehicle travel.

## **Location and Site Description**

The subject location occurred near the intersection of Dayton Street at Windham Lane. There are three schools in the vicinity of the crash: Glen Haven Elementary School (ES), Silgo Middle School (MS), and Northwood High School (HS). Glen Haven ES is located to the northeast at 10900 Inwood Ave. Glen Haven ES has a current enrollment of 564 students in grades PreK through 5<sup>th</sup>. Silgo MS is located to the southeast at 1401 Dennis Avenue. Silgo MS has a current enrollment of 702 students in grades 6<sup>th</sup> through 8<sup>th</sup>. Finally, Northwood HS has a current enrollment of 1,745 students in grades 9<sup>th</sup> through 12<sup>th</sup>.

### **Glen Haven Elementary School (ES)**

The majority of student arrivals are between 8:30 AM and 9:00 AM and dismissal occurs between 3:25 PM and 3:45 PM.

### **Silgo Middle School (MS)**

The majority of student arrivals are between 7:45 AM and 8:15 AM and dismissal occurs between 3:00 PM and 3:20 PM.

### **Northwood High School (HS)**

The majority of student arrivals are between 7:15 AM and 7:45 AM and dismissal occurs between 2:30 PM and 2:50 PM.

### **Dayton Street**

Dayton Street is an unmarked roadway approximately 25 feet wide, oriented in the north-south direction, spanning less than ½ mile, beginning at MD 97 (Georgis Ave) to the south and terminating at Windham Lane to the north. Parking is permitted on both sides of the roadway.

The statutory speed limit along Dayton Street is 25 mph. Speed humps exist along Dayton Street to the south with warning signs and “15 MPH” advisory plaques.

Refer to **Figure 1** in the attachments for additional details on the Dayton Street segment.

#### Dayton Street at Windham Lane

The intersection of Dayton Street at Windham Lane is an unsignalized, four-legged intersection, with Dayton Street extending southerly from Windham Lane and a driveway extending northerly with access to a parking lot for townhomes. The north leg is offset approximately 15 feet east of Dayton Street. The northbound approach is the only approach that is stop-controlled. Windham Lane is an undivided roadway that accesses numerous residential homes.

Pedestrian facilities at the corners of the intersection are not compliant and the ramps are missing. No marked crossings exist at this intersection.

Dayton Street was evaluated to identify potential infrastructure, maintenance activities, and road user behaviors that contribute to increased safety risk at and in the vicinity of the school-related crash location. Dayton Street was reviewed between MD 97 (Georgia Avenue) to the west and Glenhaven Drive to the east. Please refer to **Figure 1** for additional information.

#### Crash History

Crash data obtained from dataMontgomery indicates that five (5) incidents occurred within the vicinity of the crash site between January 2020 and December 2024. Of these five (5) incidents, one (1) crash occurred within 150 feet of the intersection of Dayton Street and Windham Lane, the subject crash incident. The four (4) other crashes occurred at nearby locations. The five (5) crashes reported included three (3) injury crashes, two (2) property damage crashes, and the crash type consisted of one (1) angle collision, one (1) sideswipe collision, two (2) single vehicle collisions, and one (1) classified as “other”. There was only one (1) pedestrian-related crash. Two (2) of the collisions occurred during dry conditions, three (3) of the incidents were not specified, and two (2) occurred in the dark/dusk. The incidents are illustrated on **Figure 3**.

#### Field Observations

Field observations were performed on Monday, March 3, 2025, at approximately 10 AM. Weather conditions were clear, and the roadway surface was dry. Pedestrian and vehicular activity was low during the observation period. There are no existing pavement markings across the intersection. On the north leg, there is a sidewalk and an existing ADA compliant ramp that is misaligned to the connecting sidewalk landing area crossing Dayton Street. The sidewalk is not buffered to the east of Dayton Street, while the sidewalk to the west of Dayton Street is buffered. The intersection is not aligned in the northbound and southbound directions along Dayton Street. On-street parking was utilized along Dayton Street reducing sight lines at intersections, driveways, and along curves at the intersection approach.

#### Findings

Site observations did not find any infrastructural deficiencies that could have contributed to this crash.

## **Recommendations**

While not related to the crash incident, the following were identified as maintenance needs that may reduce safety risk:

1. Recommend painting a stop bar for the northbound approach.
2. Update landing area on the northwest corner to include DWS.
3. Consider re-aligning the existing ADA ramp to the landing area on the northwest corner.

## **Site Photograph**



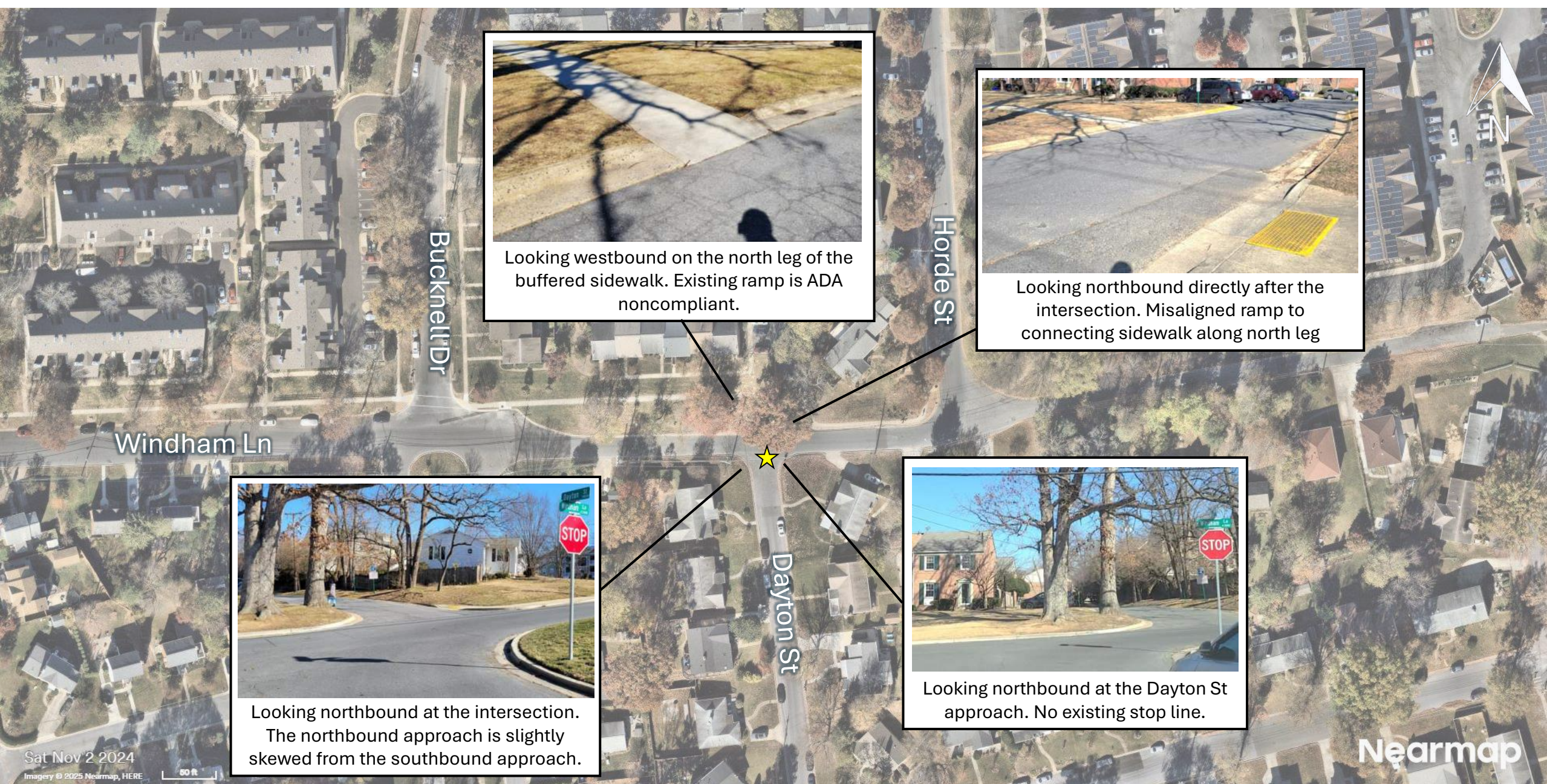
**Photo 1. Taken from southwest corner looking eastbound along Windham Lane.**

**Approximate crash location.**



**Photo 2. Intersection view from northeast corner.**





★ Crash Location

Figure 1 – Dayton St at Windham Ln Observations



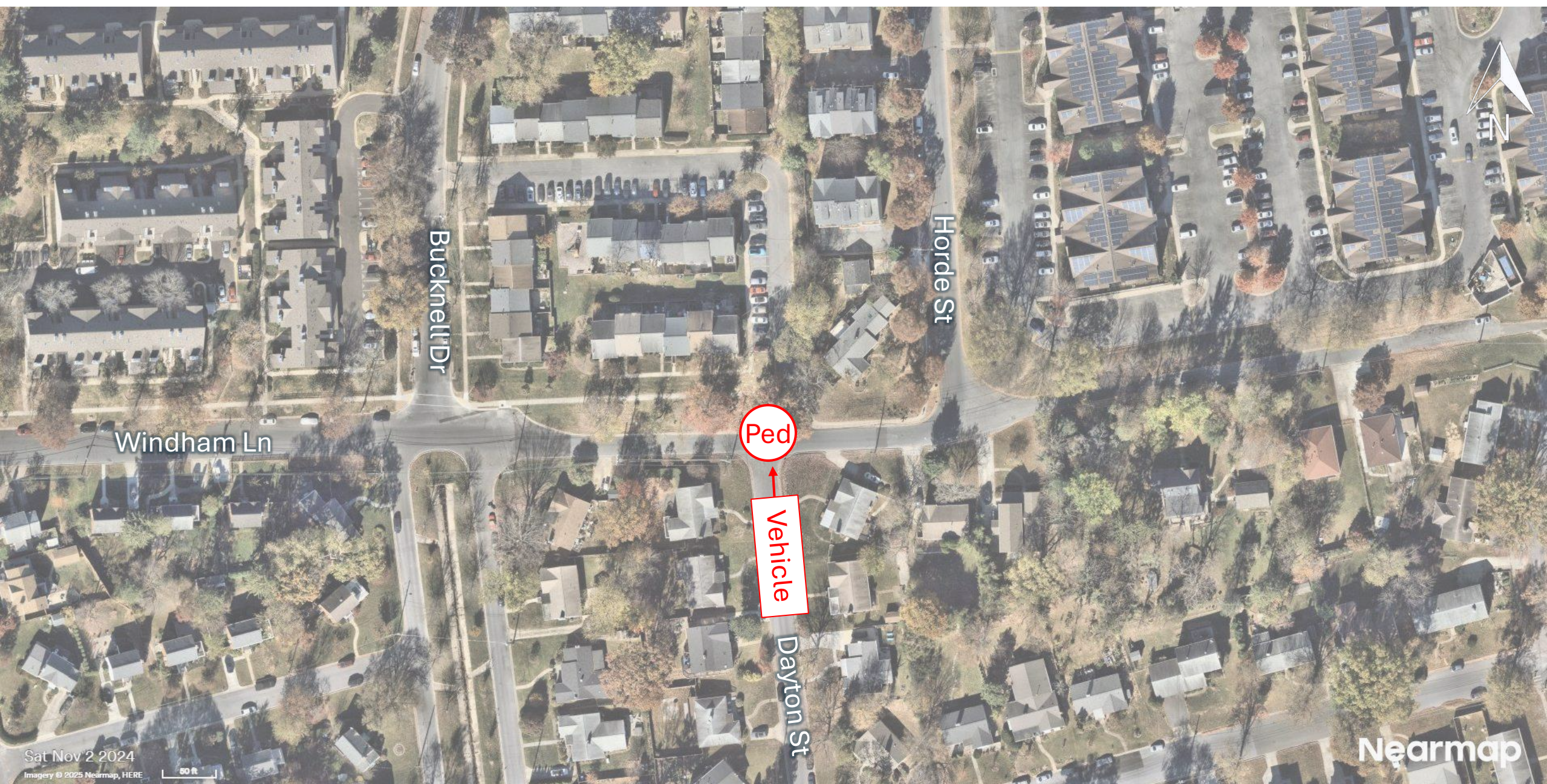


Figure 2 – Crash Diagram



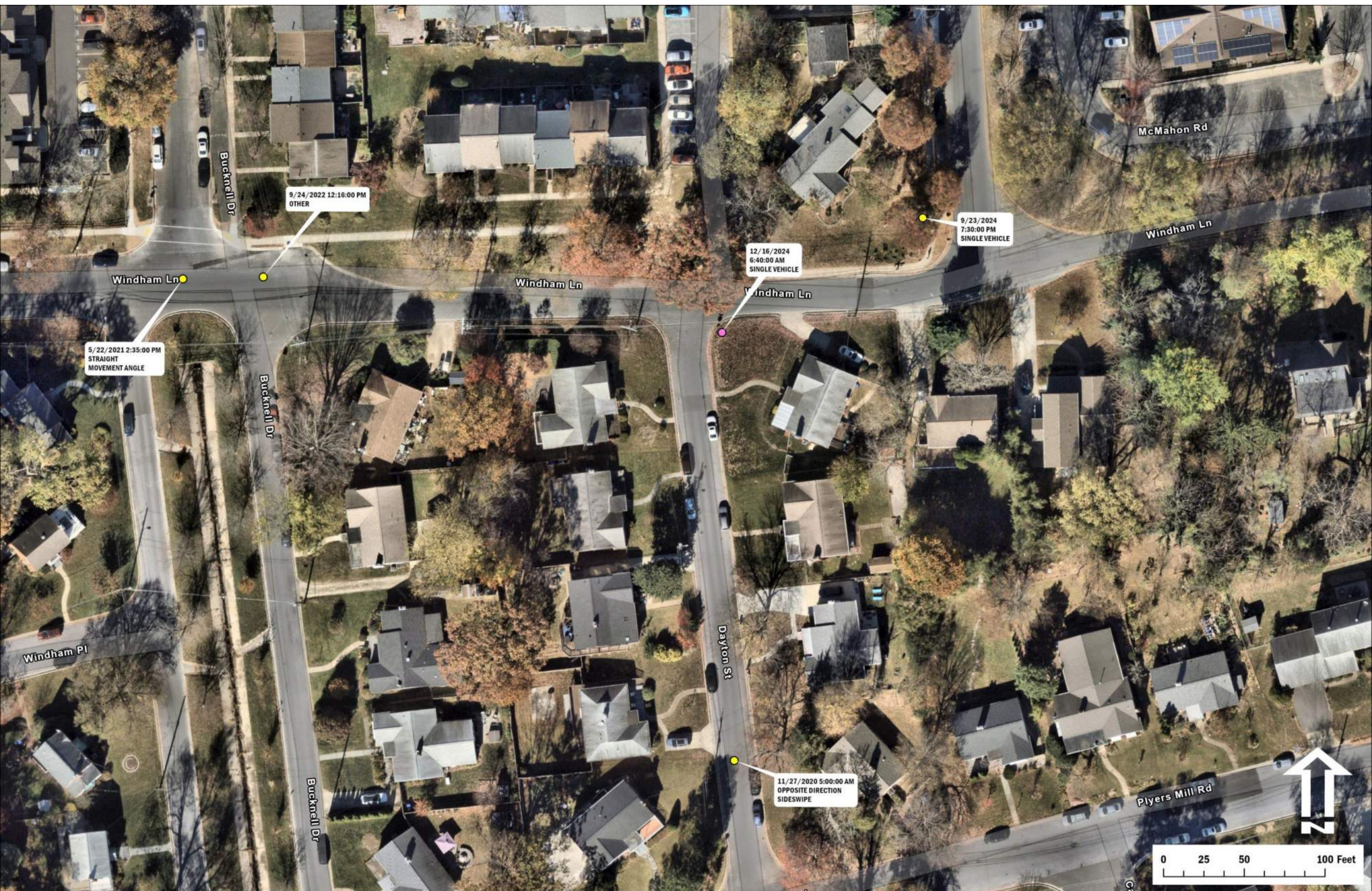


Figure 3 – Crash History (2020-2024)