

## **SCHOOL-RELATED CRASH INFRASTRUCTURE REVIEW**

### **MONTGOMERY COUNTY DEPARTMENT OF TRANSPORTATION (MCDOT)**

- **Location:** I-270Y Southbound Ramp 8 to Democracy Boulevard
- **Crash Date:** August 27, 2025
- **Crash Time:** Approximately 8:17 AM
- **School Name:** Walter Johnson High School
- **School Walkshed Boundary:** ☒ Inside
- **Local Case No:** 250038291
- **Review Date:** October 21, 2025

### **DESCRIPTION OF INCIDENT AND CRASH DETAIL**

On Wednesday, August 27, 2025, a pedestrian was in the crosswalk along the ramp from I-270 Spur Southbound to Democracy Boulevard when the pedestrian stated they darted across the ramp without looking and was struck by a motorist. The crash report indicated the incident occurred within a marked crosswalk. The pedestrian suffered a possible injury and was transported to the hospital. The weather was clear, and the roadway was dry. Figure 2 illustrates the crash location and the direction of pedestrian and vehicle travel.

### **SCHOOL-SPECIFIC CONTEXT**

- **School Type:** ☒ High
- **School Hours (Arrival / Dismissal):** 7:45 AM – 2:30 PM
- **School Enrollment:** 2,984 (FY 23-24)
- **Crossing Guards Present:** ☐ Yes ☒ No

### **INFRASTRUCTURE & CONDITIONS**

- **Sidewalk Coverage**  
There is continuous sidewalk coverage on the north and south side of the road. The facility on the north side is a shared use path.
- **Crosswalk Visibility**  
The diagonal hatched crosswalk markings are in good condition.
- **Lighting at Location**  
The street light closest to the crosswalk was not operational at the arrival time. Other street lights along the ramp were illuminated at the time.
- **Speed Limit / School Zone Limit**  
The speed limit along Democracy Boulevard is 35 mph and the advisory speed limit along the off-ramp is 35 mph. The school zone limit along Democracy Boulevard to the east of the crash location is 35 mph.
- **Intersection Geometry**  
The off-ramp to Democracy Boulevard from I-270Y Southbound is one lane, expanding to three (3) lanes for a distance of approximately 200 feet, with one uncontrolled channelized right-turn lane towards Democracy Boulevard westbound, and two lanes towards Democracy Boulevard eastbound. The crash location occurred along the channelized right turn to Democracy Boulevard westbound. The lane width is approximately 22-feet with a 6-foot left shoulder.

- **Nearby Transit Stop**  
There are no bus stops within 1,500 feet of the crash location.
- **Nearby School Facilities**  
The school is located approximately ¾-mile to the east of the crash location.

### **SITE OBSERVATIONS**

- **Observation Date/Time:** 7:00 AM-7:45 AM, Tuesday, October 21, 2025.
- **Pedestrian Activity**  
Two pedestrians were observed and one bicyclist was observed crossing the ramp.
- **Vehicle Activity:** ☒ High.
- **Drop-off / Pick-up Operations**  
No drop-off or pick-up patterns observed at the crash location.
- **Visibility / Obstructions**  
A bush is located on the right side of the ramp approaching the crosswalk. Pedestrian sight distance is adequate at the crosswalk ramp.
- **Driver Behavior**  
Drivers approach the crosswalk at free flow speeds departing I-270. While there is a separate lane to merge onto Democracy Boulevard, most were observed to slow or stop downstream of the crossing before continuing onto Democracy Boulevard.
- **Additional Details**  
A Yield sign exists at the I-270Y SB off-ramp to Democracy Boulevard even though there is a lane addition. Not a heavy pedestrian area as there are no bus stops nearby or large pedestrian generators.

### **CRASH HISTORY (AT THE LOCATION)**

- **Total Crashes (Last 5 Years):** A total of 13 crashes occurred at or near the subject crash location between January 1, 2020 and October 1, 2025.
  - **Pedestrian/Bicycle Involved:** Only the subject crash involved a pedestrian.
  - **Student-Involved Crashes:** Only the subject crash involved a student.
  - **Crashes During School Hours:** Of the 13 crashes, five (5) crashes occurred within school hours or within one hour of the school bell (6:45 AM to 3:30 PM) and within the school calendar year.
  - **Recurrent Patterns (Time/Type):** The most prominent crash type included single vehicle crashes, with five (5) collisions. Single vehicle crashes may be due to motorists speeding along the off-ramp and departing the roadway. The remaining crashes include four (4) rear end collisions, three (3) angle collisions, and one (1) rear to side collision.

### **FINDINGS**

There were no obvious infrastructure deficiencies that contributed to this crash. The crash occurred due to driver and failure to exercise due care approaching an uncontrolled pedestrian crossing and pedestrian inattentiveness.

### **RECOMMENDATIONS**

While not related to the crash, the following were identified as recommendations to enhance the safety of the location:

- ☑ **Signage Enhancements:** Upgrade W11-15 signage to meet current retro reflectivity requirements. Post warning sign assemblies on both sides of the uncontrolled crossing. Install advance warning sign assembly alerting motorists of trail users across the ramp. Replace outdated pedestrian/bicyclist signing with W11-15 sign.
- ☑ **Maintenance:** Replace the existing diagonal hatched crosswalk with continental crosswalk markings over both ramps at the intersection with Democracy Boulevard. Upgrade existing HPS streetlights to LED and ensure all circuits and lights are functioning properly. Trim back vegetation along the I-270Y SB off-ramp towards Democracy Boulevard westbound on the right side of the ramp.

#### **SITE PHOTOS / MAPS**

- ☑ Photos Attached
- ☑ Crash Diagram Included
- ☑ School Walk Zone Map Included
- ☐ Heatmap of Past Crashes (if applicable)





Motorists stop at "Yield" sign although it is a lane addition



Bush slightly obstructs line of sight for pedestrians looking at off-ramp from the west



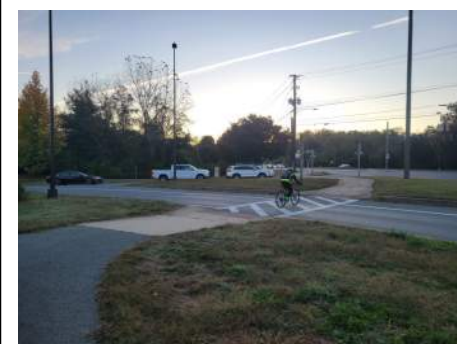
Street lights were not operational upon arrival

Democracy Blvd

I-270 Spur



Diagonal hatched crosswalk over ramp with outdated sign



Bicyclist crossing ramp along shared use path alongside Democracy Blvd

Nearmap

Figure 1 – I-270Y SB Ramp to Westbound Democracy Blvd Observations

★ Crash Location



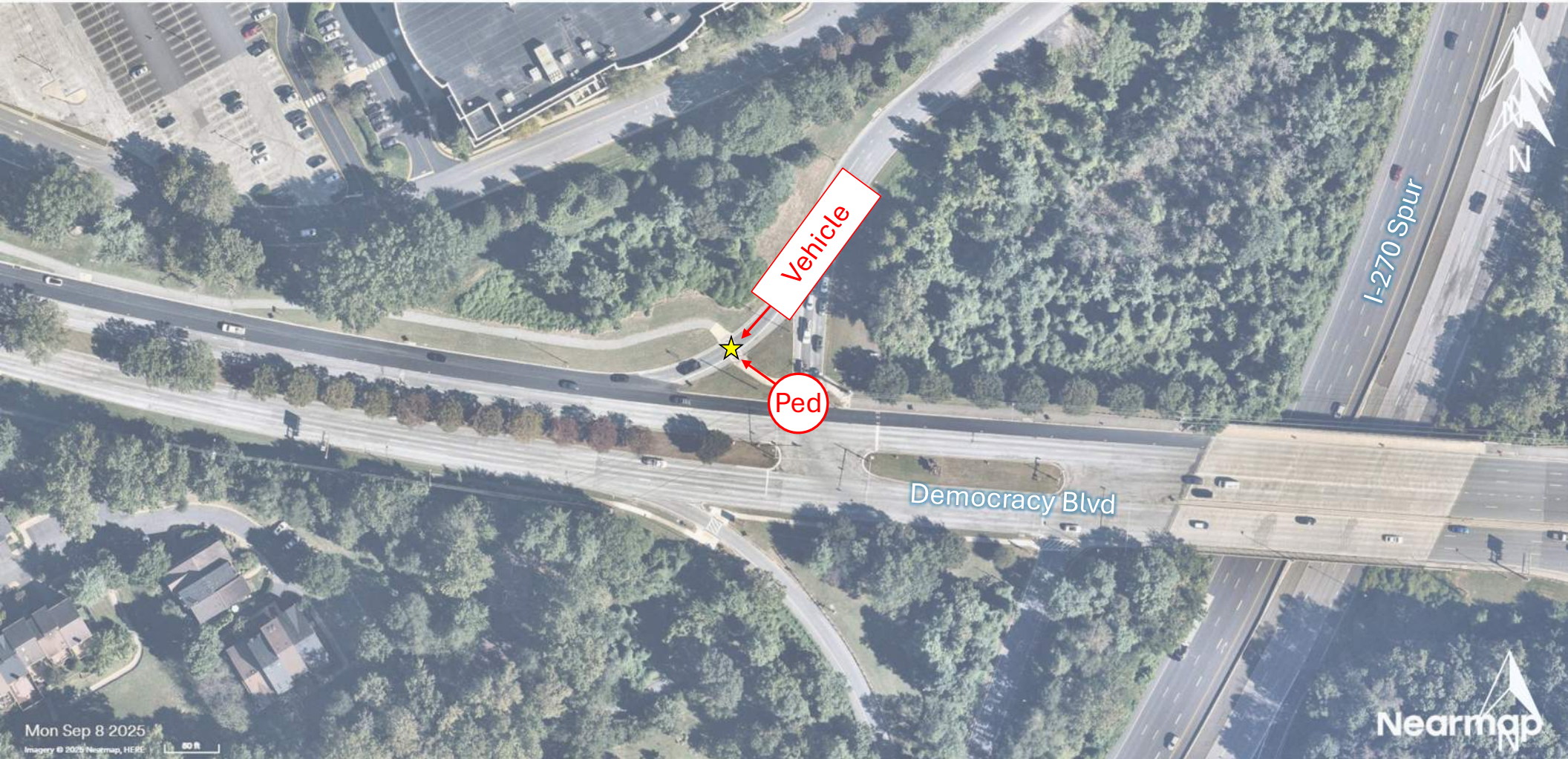


Figure 2 – Crash Diagram



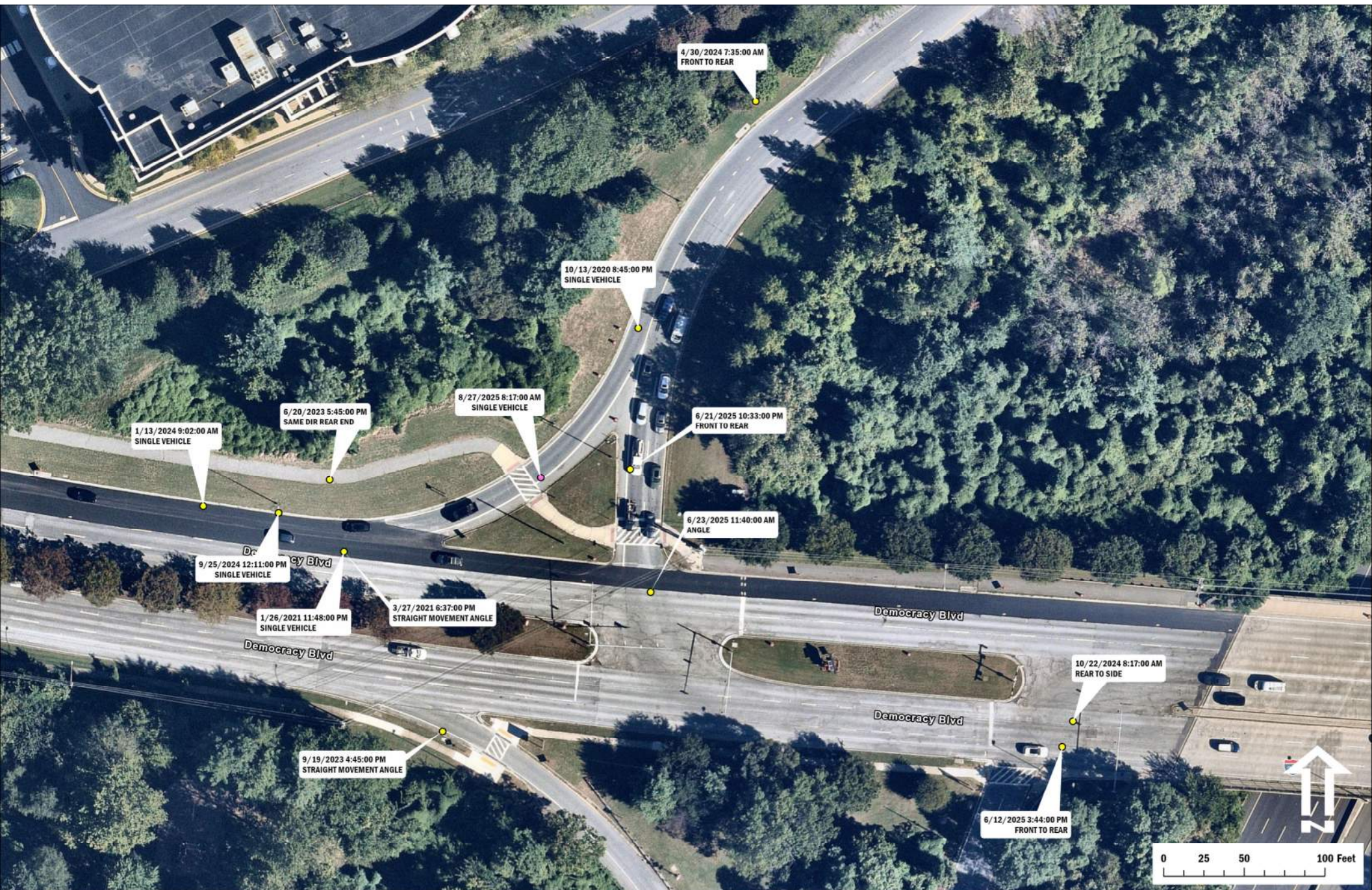


Figure 3 – Crash History (2020-2025)



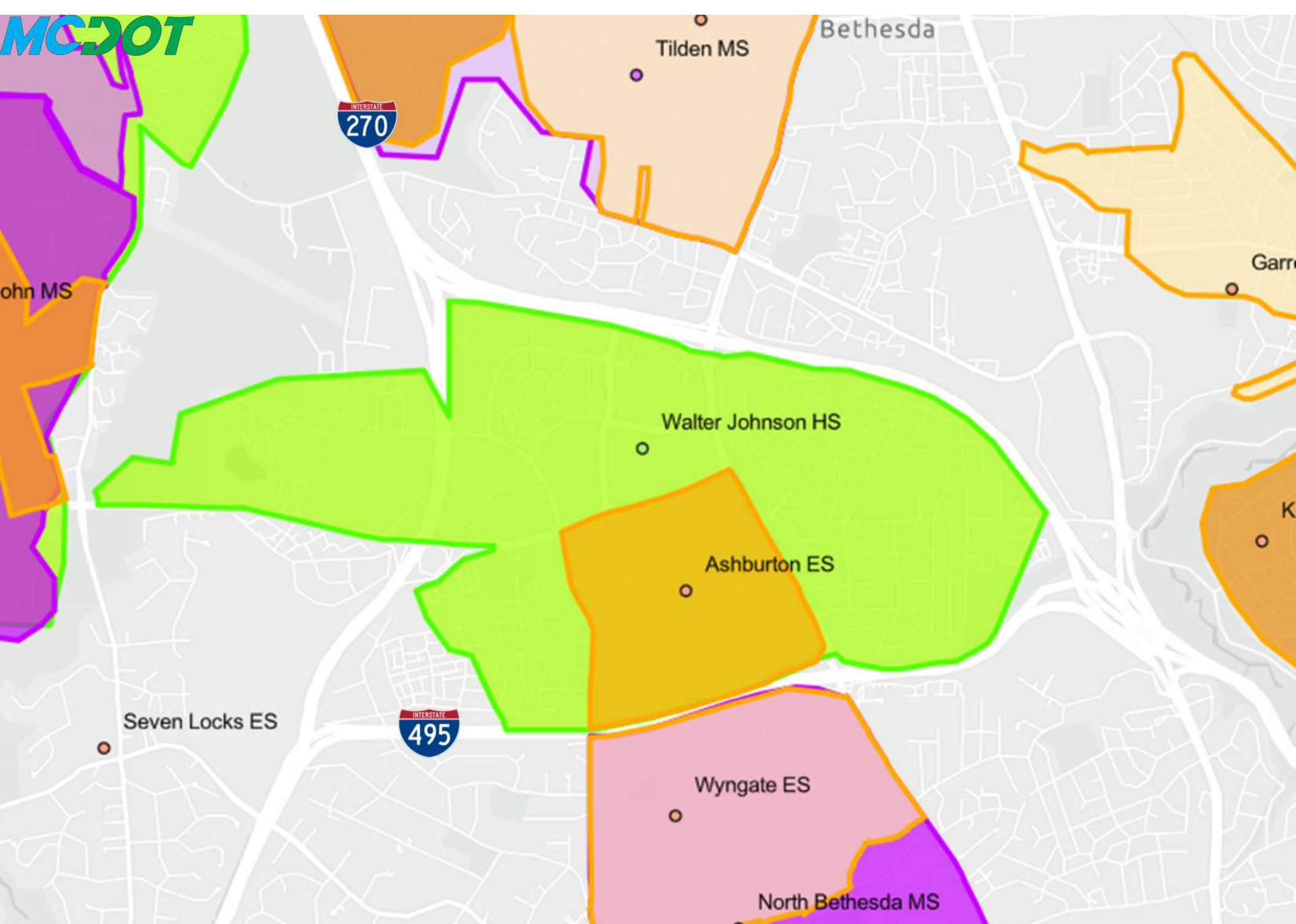


Figure 4 – School Walk Zone Map