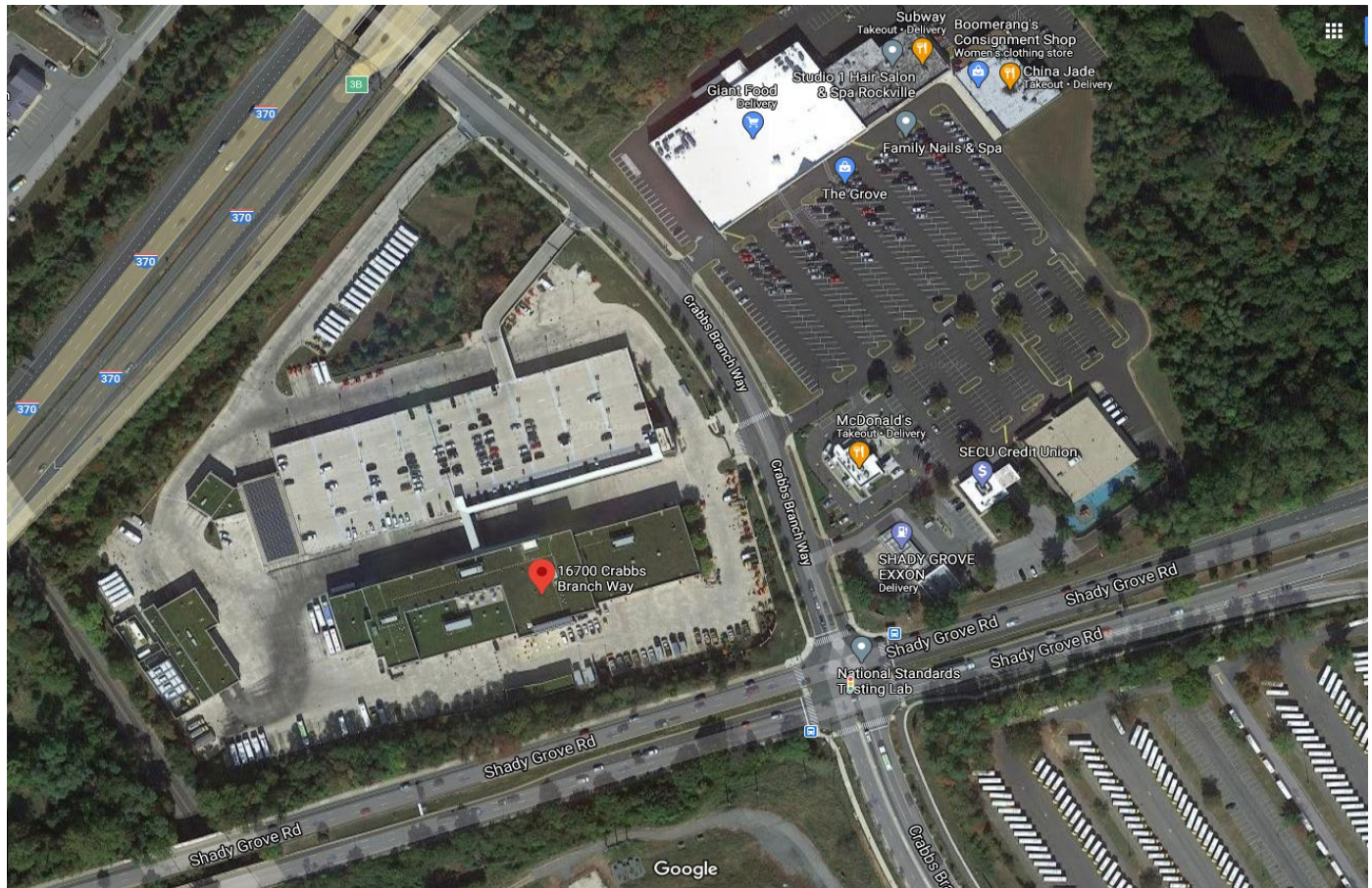


DIRECTIONS TO FLEET MANAGEMENT SERVICES

16700 Crabbs Branch Way, 2nd Floor Rockville, Maryland 20855



DRIVING FROM THE BELTWAY (I-495) FROM THE WEST

- From Route 495 (Beltway), take Route 270 northbound to Route 370 east
- Exit at **9A** (Route 370). Continue on Route 370 (approx. 1 mile) to Shady Grove Road **West**. Exit onto Shady Grove Road **West** and keep in the right lane to the first signal light which is Crabbs Branch Way. Make a right turn onto Crabbs Branch Way.
- Go to the 2nd gate entrance on the left side and enter parking lot via the ramp. Blue sign at ramp entrance – **“16700 Crabbs Branch Way – Ride On and Fleet Services – Visitor and Employee Parking”**. Park in available spaces. Walk across crosswalk and turn to your left toward door to Fleet Management Services. If door is locked, press buzzer and door will be opened.

DRIVING FROM ROUTE 355 SOUTH

- Travel 355 North to Shady Grove Road.
- Turn **right** at traffic light onto Shady Grove Road.
- At the 4th traffic light, turn **left** onto Crabbs Branch Way (McDonalds is on the right once you make the turn).
- Go to the 2nd gate entrance on left side and enter the parking lot via the ramp. Blue sign at ramp entrance - **“16700 Crabbs Branch Way – Ride On and Fleet Services – Visitor and Employee Parking”**. Park in available spaces. Walk across crosswalk and turn to your left toward door to Fleet Management Services. If door is locked, press buzzer and door will be opened.

DRIVING FROM ROUTE 355 NORTH

- Travel 355 South to Shady Grove Road.
- Turn **left** at traffic light onto Shady Grove Road.
- At the 4th traffic light, turn **left** onto Crabbs Branch Way (McDonalds is on the right once you make the turn).
- Go to the 2nd gate entrance on left side and enter the parking lot via the ramp. Blue sign at ramp entrance - **“16700 Crabbs Branch Way – Ride On and Fleet Services – Visitor and Employee Parking”**. Park in available spaces. Walk across crosswalk and turn to your left toward door to Fleet Management Services. If door is locked, press buzzer and door will be opened.