

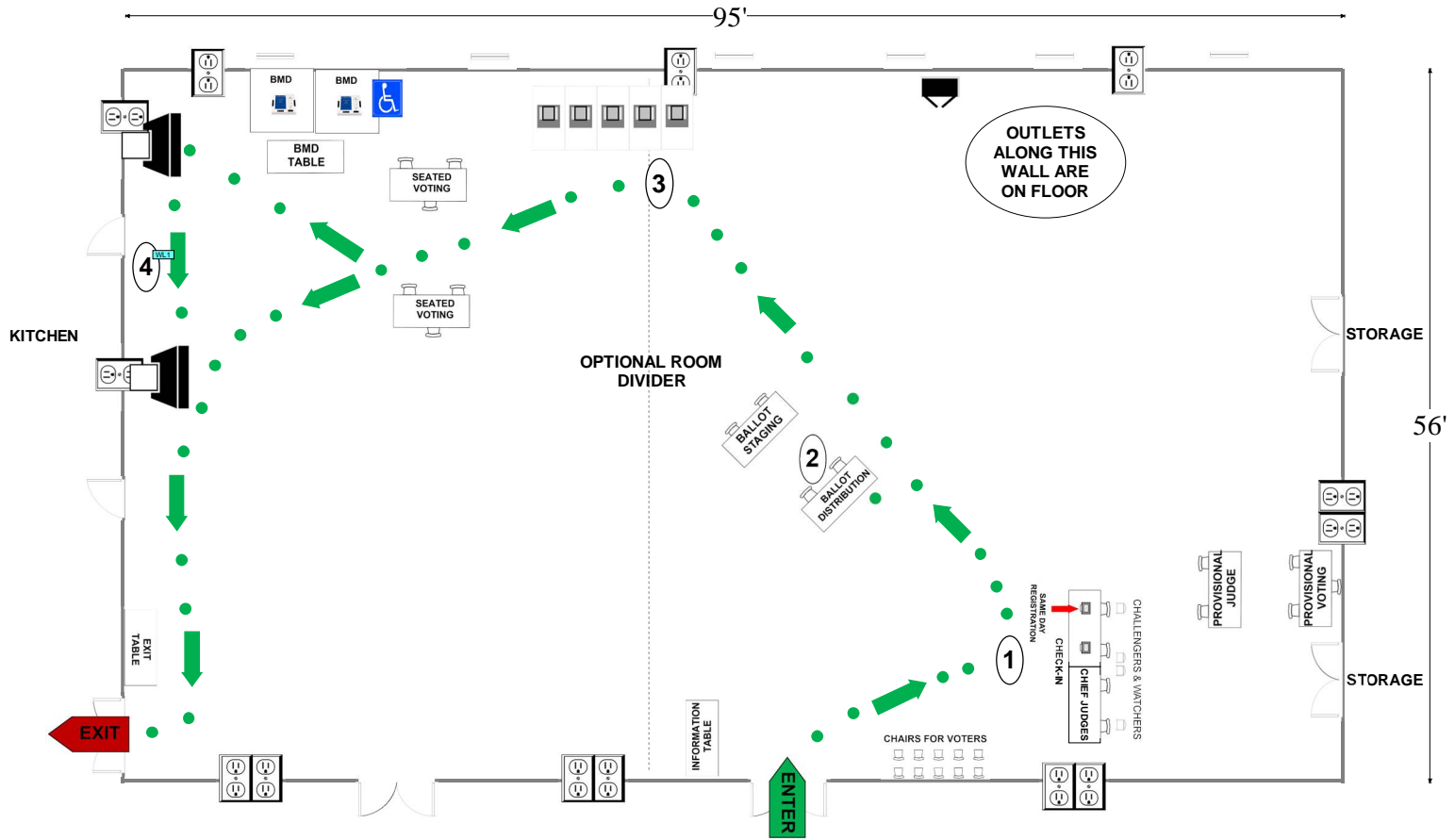
10-01 Potomac Methodist Parish Center

9908 S. Glen Rd
Potomac, MD 20854

GYM

RECOMMENDED ROOM LAYOUT

- 5** Voting Booths
- 6** Seated Voting
- 2** Poll Books
- 2** BMDs
- 2** Scanners



- 6'X2 1/2' Table
- Voting Booths with 2 1/2'X5' clearance
- Transfer Cart
- Window
- Ballot Marking Device
- Vending Machine
- Electronic Poll Book
- Scanner
- Scanner Judge stands**
2 - 3 feet from scanner
- 1 Voter Travel
- 2 plug outlet
- Fire alarm

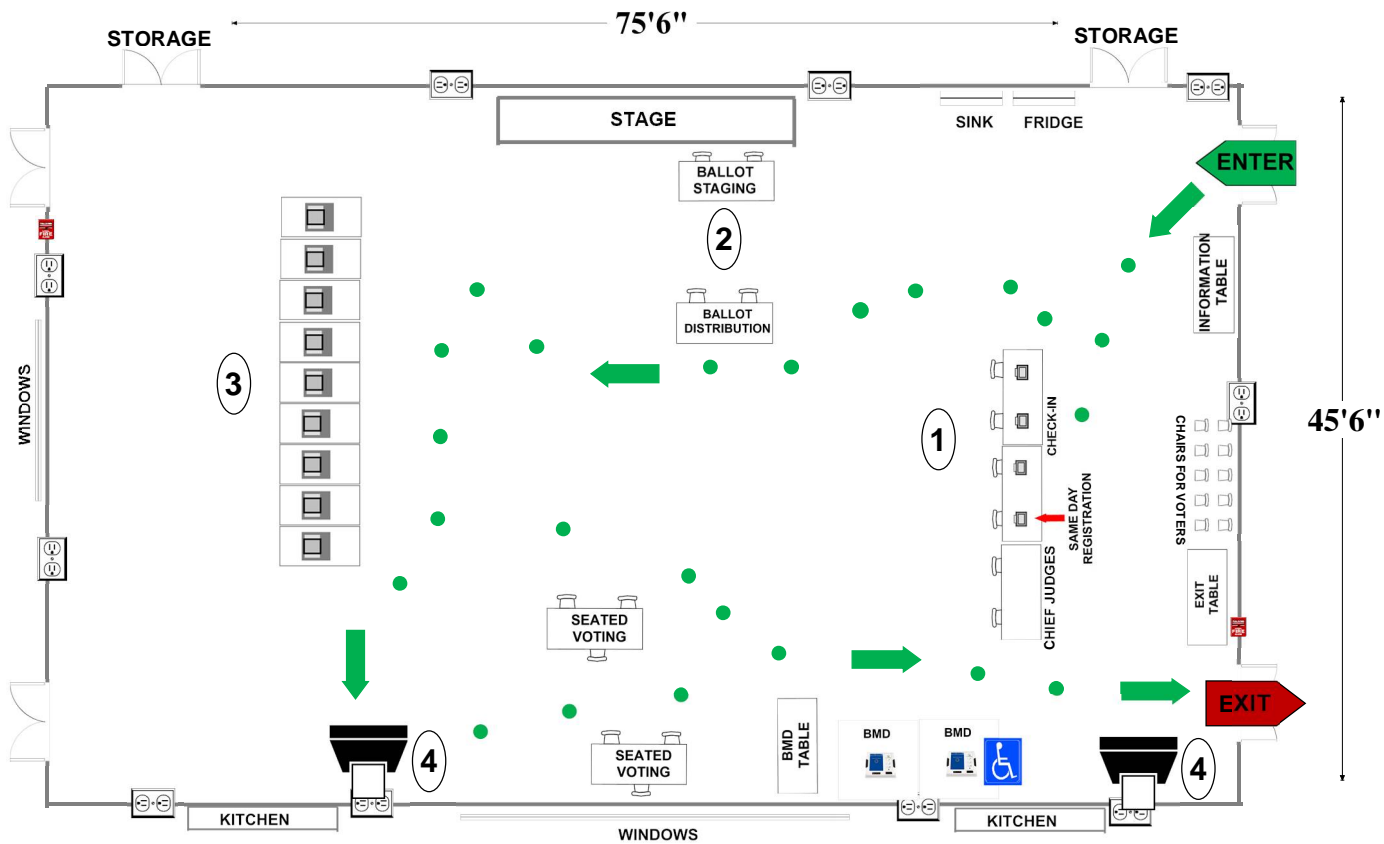
Montgomery County
Board of Elections
9/19/2024

**10-02 Potomac Elementary School
10311 River Rd
Potomac MD 20854**

RECOMMENDED ROOM LAYOUT

ALL PURPOSE ROOM

- | | |
|----------|---------------|
| 9 | Voting Bolls |
| 6 | Seated Voting |
| 4 | Poll Books |
| 2 | BMDs |
| 2 | Scanners |



- | | | | | | |
|--|--|--|-----------------------|--|----------------|
| | 6'X2 1/2' Table | | Ballot Marking Device | | 1 Voter Travel |
| | Voting Booths with 2 1/2'X5' clearance | | Vending Machine | | 2 plug outlet |
| | Transfer Cart | | Electronic Poll Book | | Fire alarm |
| | Window | | Scanner | | Land line jack |
| | | | Land line jack | | Column |

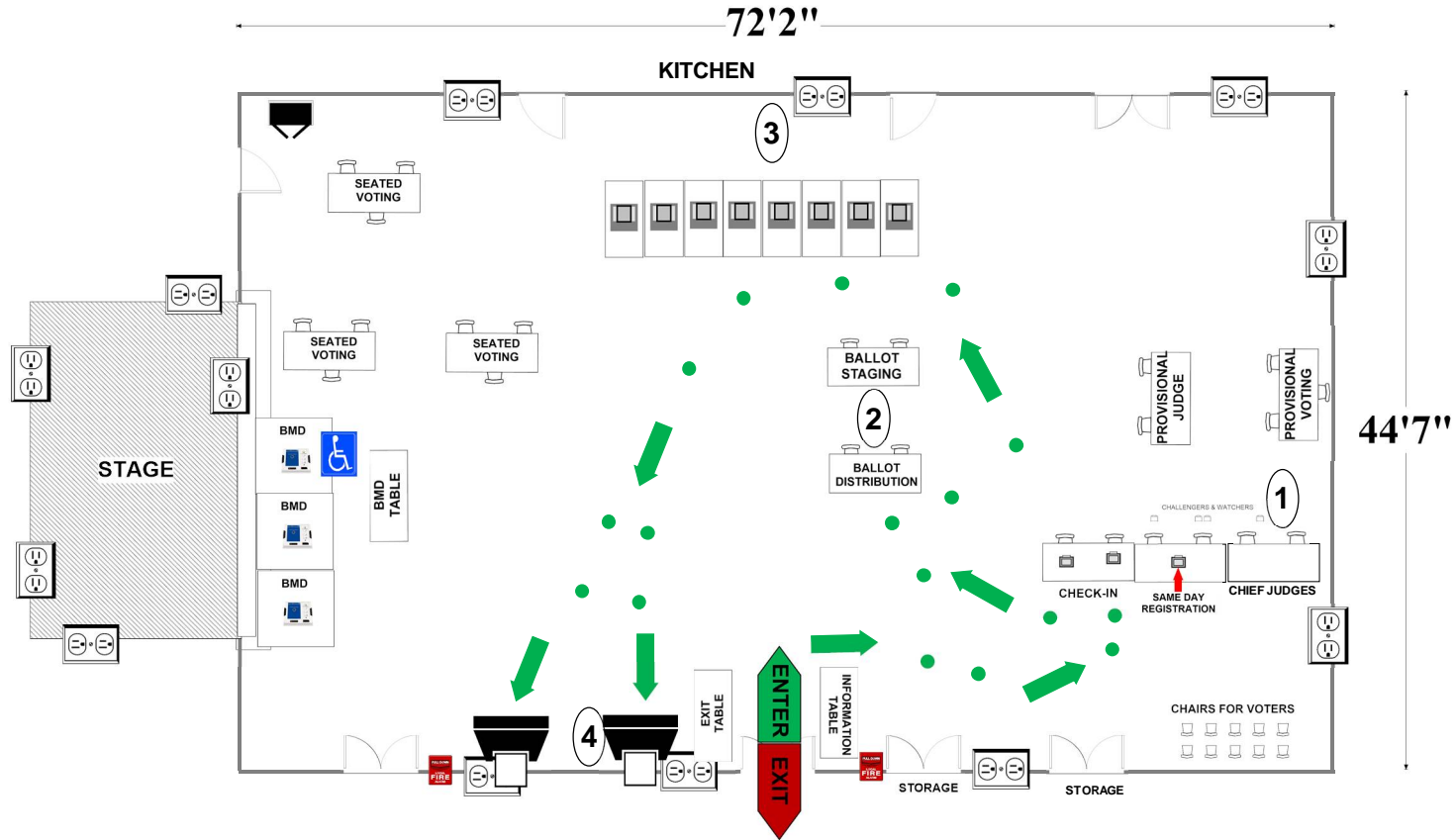
Montgomery County
Board of Elections
10/7/2024

10-03 Seven Locks Elementary School
 9500 Seven Locks Rd
 Bethesda, MD 20817

ALL-PURPOSE ROOM

RECOMMENDED ROOM LAYOUT

- 8** Voting Booths
- 9** Seated Voting
- 3** Poll Books
- 3** BMDs
- 2** Scanners



- | | | | | | |
|--|--|--------------------------------|-----------------------|----------|---------------|
| | 6'X2 1/2' Table | | Ballot Marking Device | 1 | Voter Travel |
| | Voting Booths with 2 1/2'X5' clearance | | Vending Machine | | 2 plug outlet |
| | Transfer Cart | | Electronic Poll Book | | Fire alarm |
| | Window | | Scanner | | |
| | | Scanner Judge stands | | | |
| | | 2 - 3 feet from scanner | | | |

Montgomery County
 Board of Elections
 10/7/2024

10-04 Cabin John Middle School

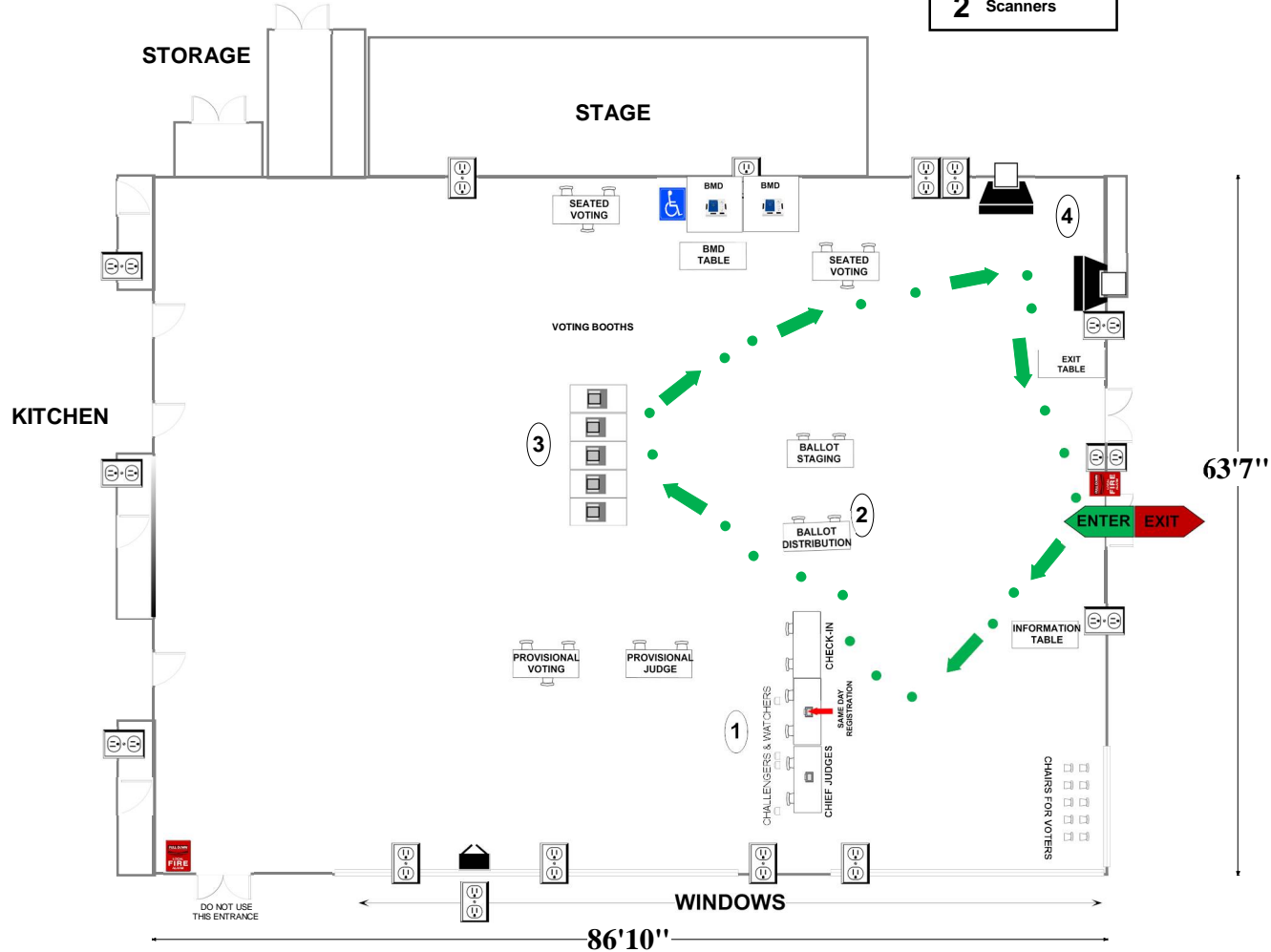
10701 Gainsborough Rd.

Potomac, MD 20854

RECOMMENDED ROOM LAYOUT

CAFETERIA

- 5** Voting Booths
- 6** Seated Voting
- 2** Poll Books
- 2** BMDs
- 2** Scanners



- 6'X2 1/2' Table
- Voting Booths with 2 1/2'X5' clearance
- Transfer Cart
- Window
- Ballot Marking Device
- Vending Machine
- Electronic Poll Book
- Scanner
- 1 Voter Travel
- 2 plug outlet
- Fire alarm
- Scanner Judge stands**
2 - 3 feet from scanner

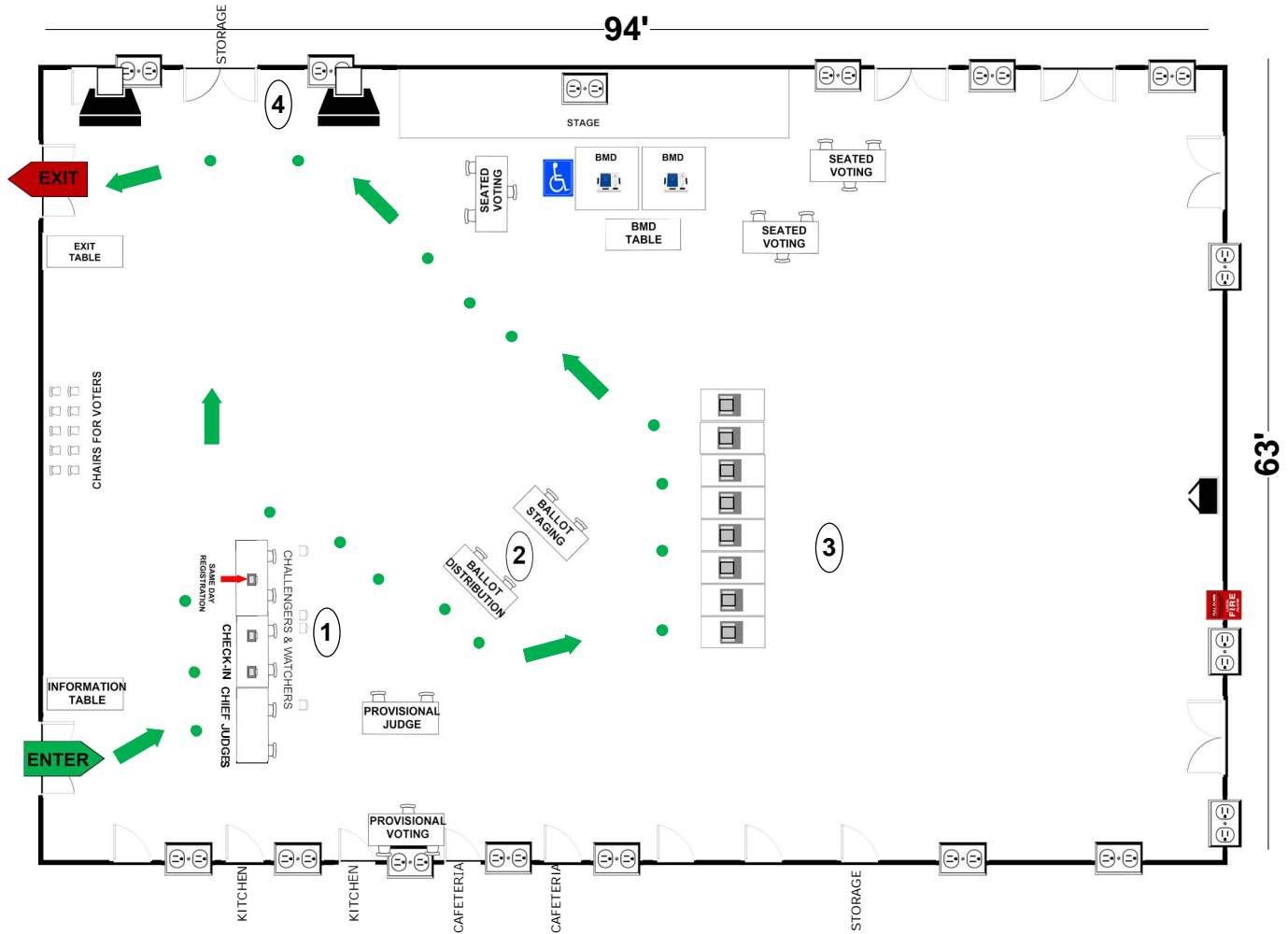
Montgomery County
Board of Elections
9/19/2024

10-05 Herbert Hoover Middle School
 8810 Postoak Road
 Potomac, MD 20854

CAFETERIA

RECOMMENDED ROOM LAYOUT

- 8** Voting Booths
- 9** Seated Voting
- 3** Poll Books
- 2** BMDs
- 2** Scanners



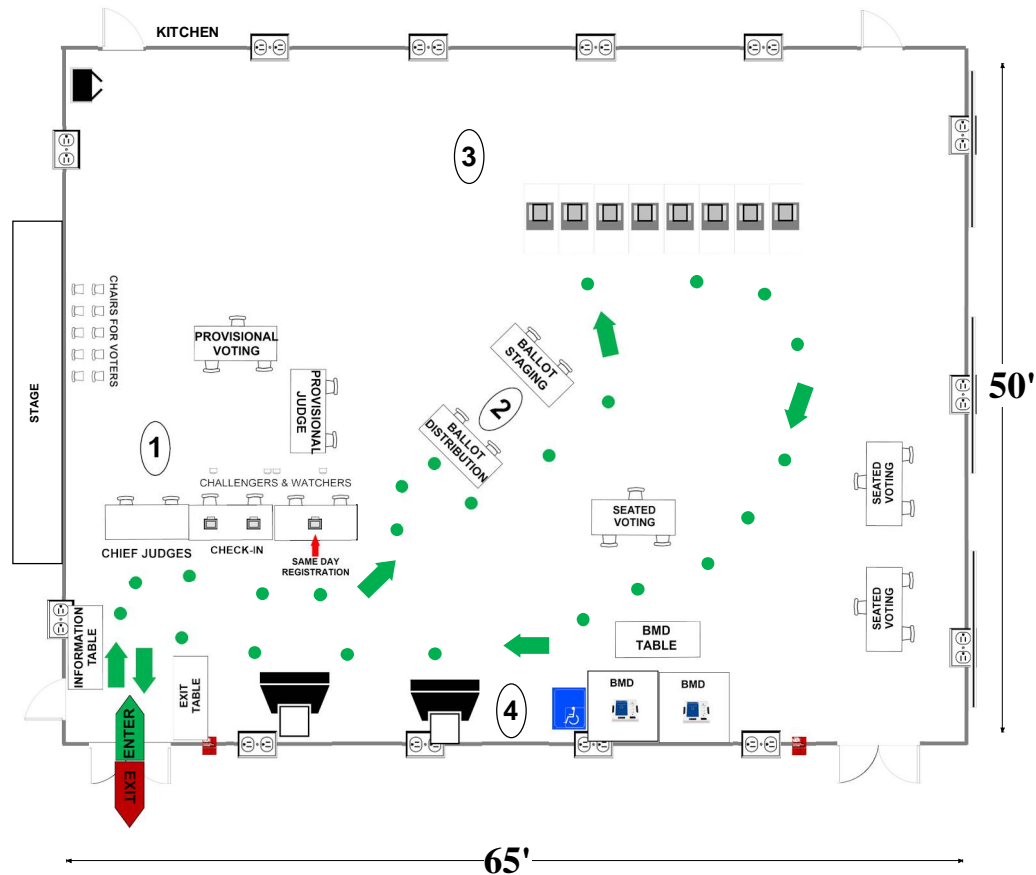
- 6'x2 1/2' Table
- Ballot Marking Device
- Voting Booths with 2 1/2'x5' clearance
- Vending Machine
- Transfer Cart
- Electronic Poll Book
- Scanner
- 1 Voter Travel
- 2 plug outlet
- Window
- Fire alarm
- Scanner Judge stands**
2 - 3 feet from scanner

Montgomery County
 Board of Elections
 9/19/2024

10-06 Wayside Elementary School
 10011 Glen Road
 Potomac MD 20854
RECOMMENDED ROOM LAYOUT

ALL-PURPOSE ROOM

- 8** Voting Booths
- 9** Seated Voting
- 3** Poll Books
- 2** BMDs
- 2** Scanners



- 6'X2 1/2' Table
- Voting Booths with 2 1/2'X5' clearance
- Transfer Cart
- Window
- Ballot Marking Device
- Vending Machine
- Electronic Poll Book
- Scanner
- Scanner Judge stands**
2 - 3 feet from scanner
- Voter Travel
- 2 plug outlet
- Fire alarm

Montgomery County
 Board of Elections
 9/19/2024

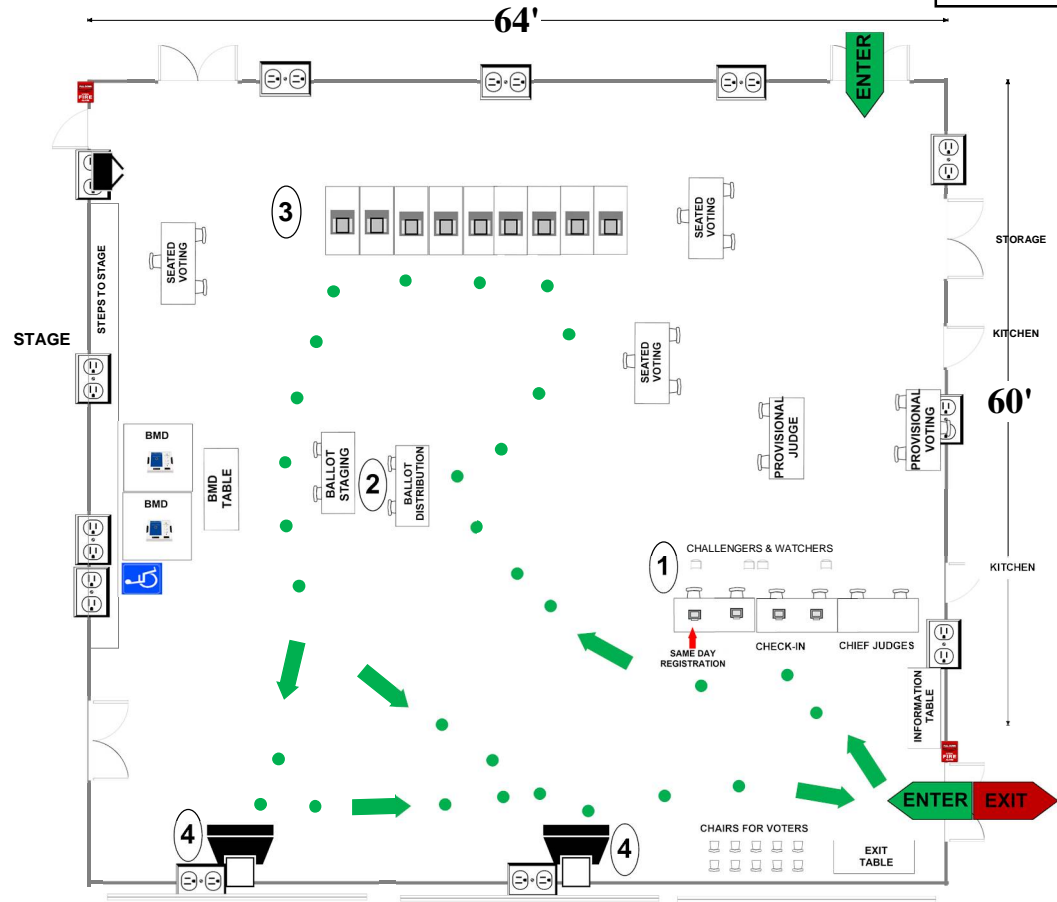
10-07 Carderock Springs Elementary School

7401 Persimmon Tree Ln
Bethesda, MD 20817

ALL-PURPOSE
ROOM

RECOMMENDED ROOM LAYOUT

- 9** Voting Booths
- 9** Seated Voting
- 4** Poll Books
- 2** BMDs
- 2** Scanners



- 6'X2 1/2' Table
- Ballot Marking Device
- Voting Booths with 2 1/2'X5' clearance
- Vending Machine
- Transfer Cart
- Scanner
- Window
- 1 Voter Travel
- 2 plug outlet
- Fire alarm
- Scanner Judge stands**
2 - 3 feet from scanner

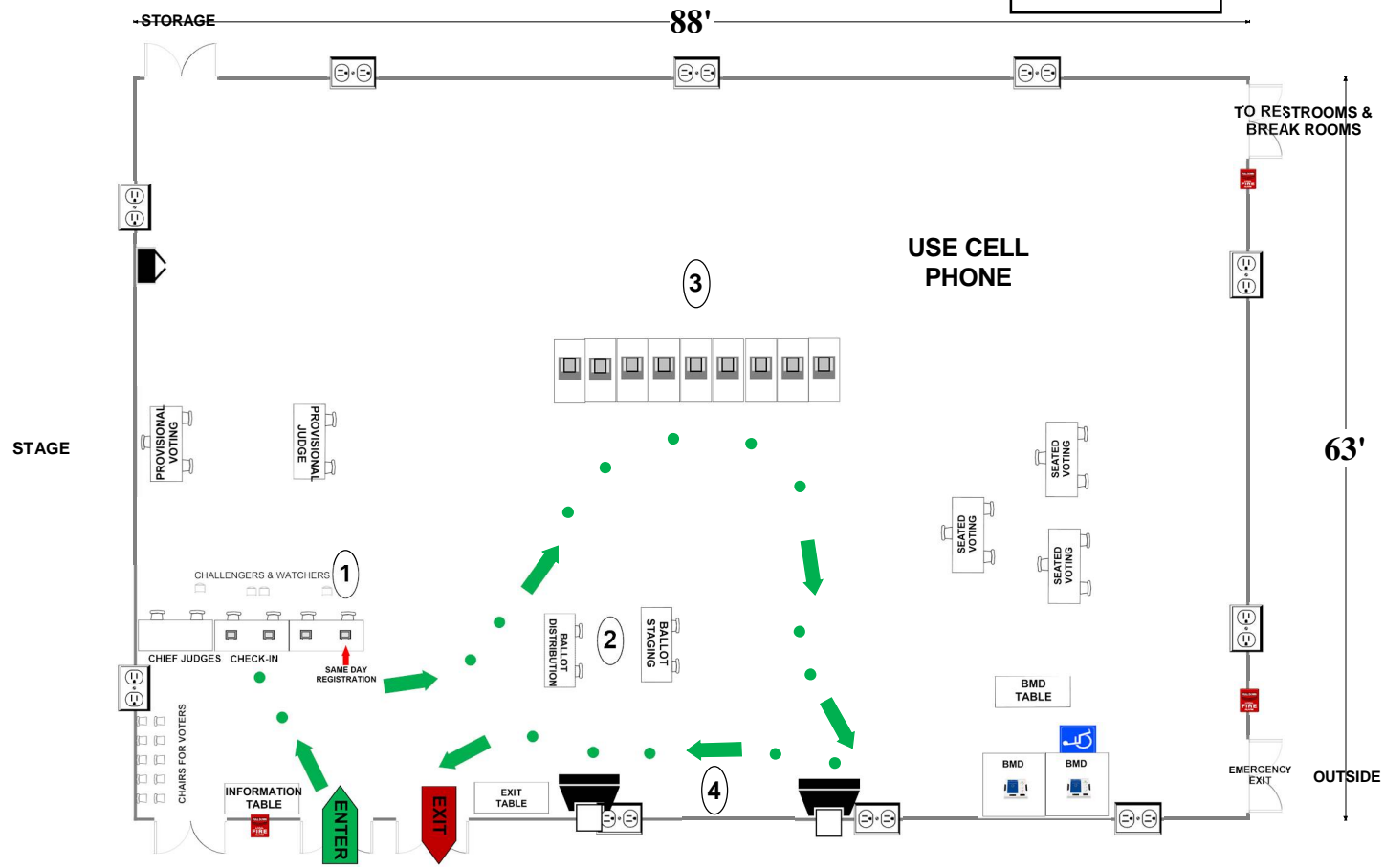
Montgomery County
Board of Elections
9/19/2024

10-09 Our Lady of Mercy School
 9222 Kentsdale Dr
 Potomac, MD 20854

**MCCAULEY HALL
 (Gym)**

RECOMMENDED ROOM LAYOUT

- 9** Voting Booths
- 9** Seated Voting
- 4** Poll Books
- 2** BMDs
- 2** Scanners



- STORAGE**
- 6'x2 1/2' Table
 - Voting Booths with 2 1/2'x5' clearance
 - Transfer Cart
 - Window
 - Ballot Marking Device
 - Vending Machine
 - Electronic Poll Book
 - Scanner
 - Scanner Judge stands**
2 - 3 feet from scanner
 - (1) Voter Travel
 - 2 plug outlet
 - Fire alarm

Montgomery County
 Board of Elections
 9/19/2024

10-10 River Falls Swim Club

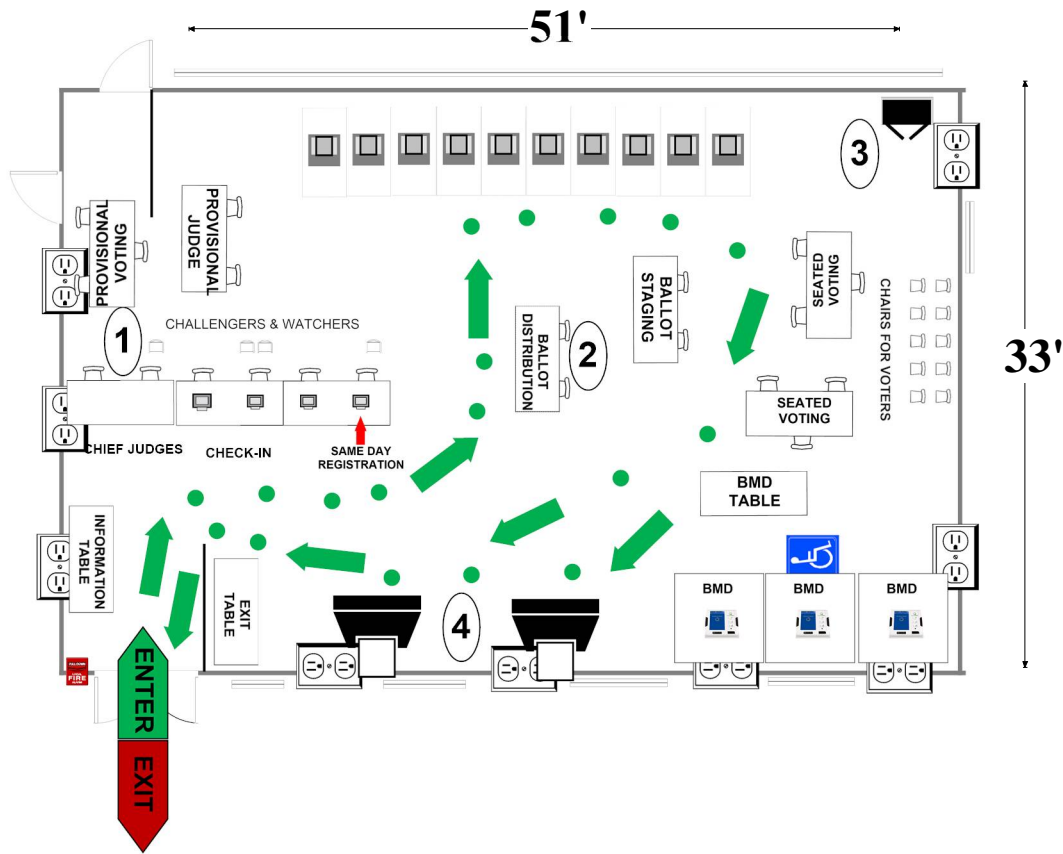
7915 Horseshoe Ln

Potomac, MD 20854

SOCIAL ROOM

RECOMMENDED ROOM LAYOUT

- 10** Voting Booths
- 6** Seated Voting
- 4** Poll Books
- 3** BMDs
- 2** Scanners



- 6'X2 1/2' Table
 - Voting Booths with 2 1/2'X5' clearance
 - Transfer Cart
 - Window
 - Ballot Marking Device
 - Vending Machine
 - Electronic Poll Book
 - Scanner
 - Voter Travel
 - 2 plug outlet
 - Fire alarm
- Scanner Judge stands**
2 - 3 feet from scanner

Montgomery County
Board of Elections

9/19/2024

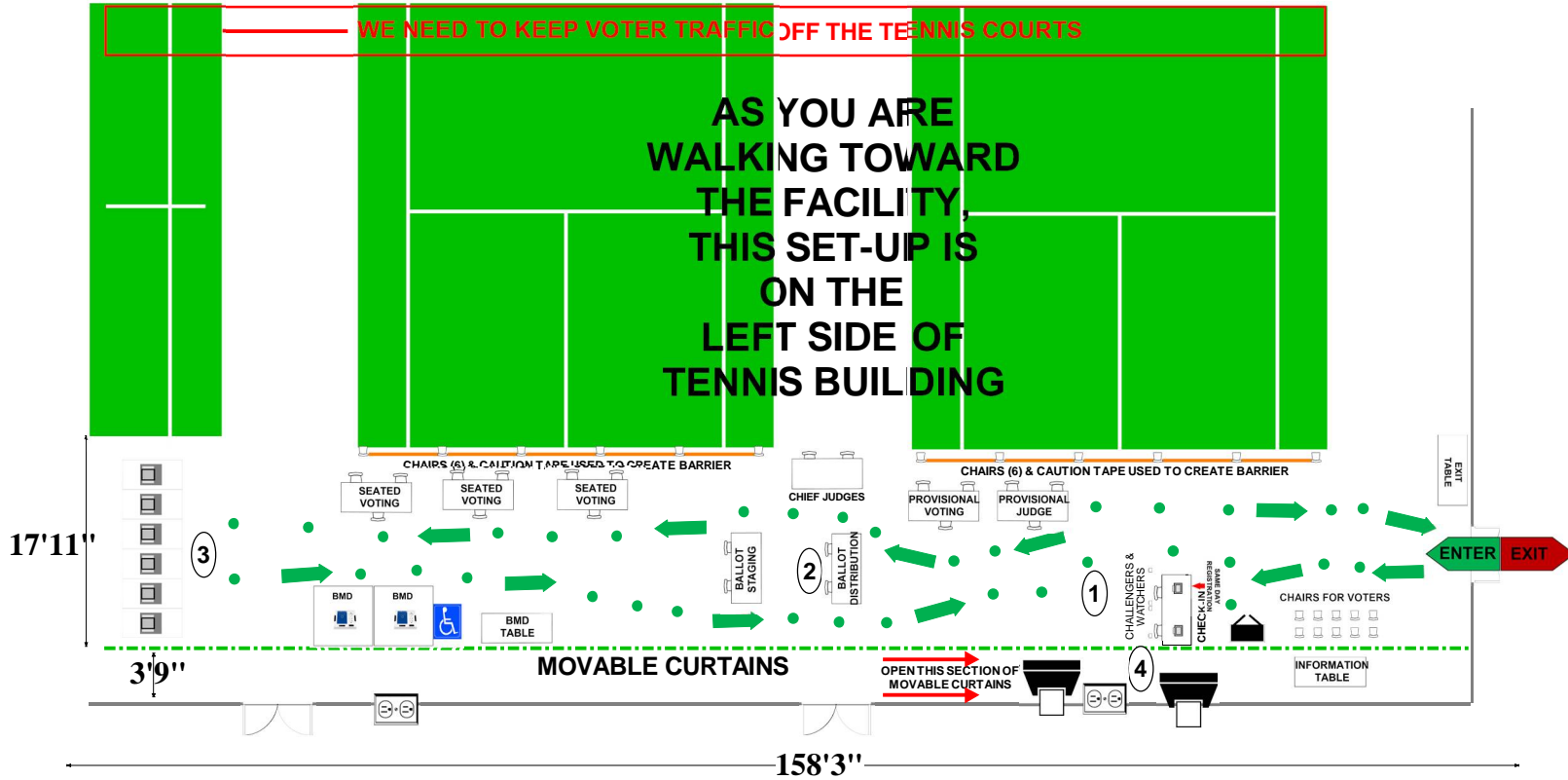
10-11 Pauline Betz Addie Tennis Center

7801 Democracy Blvd
Bethesda, MD 20817

TENNIS COURTS

RECOMMENDED ROOM LAYOUT

- | | |
|---|---------------|
| 6 | Voting Booths |
| 9 | Seated Voting |
| 2 | Poll Books |
| 2 | BMDs |
| 2 | Scanners |



- | | | | | | |
|--|--|--|---|--|----------------|
| | 6'X2 1/2' Table | | Ballot Marking Device | | 1 Voter Travel |
| | Voting Booths with 2 1/2'X5' clearance | | Vending Machine | | 2 plug outlet |
| | Transfer Cart | | Electronic Poll Book | | Fire alarm |
| | Window | | Scanner | | |
| | | | Scanner Judge stands
2 - 3 feet from scanner | | |

Montgomery County
Board of Elections

9/19/2024

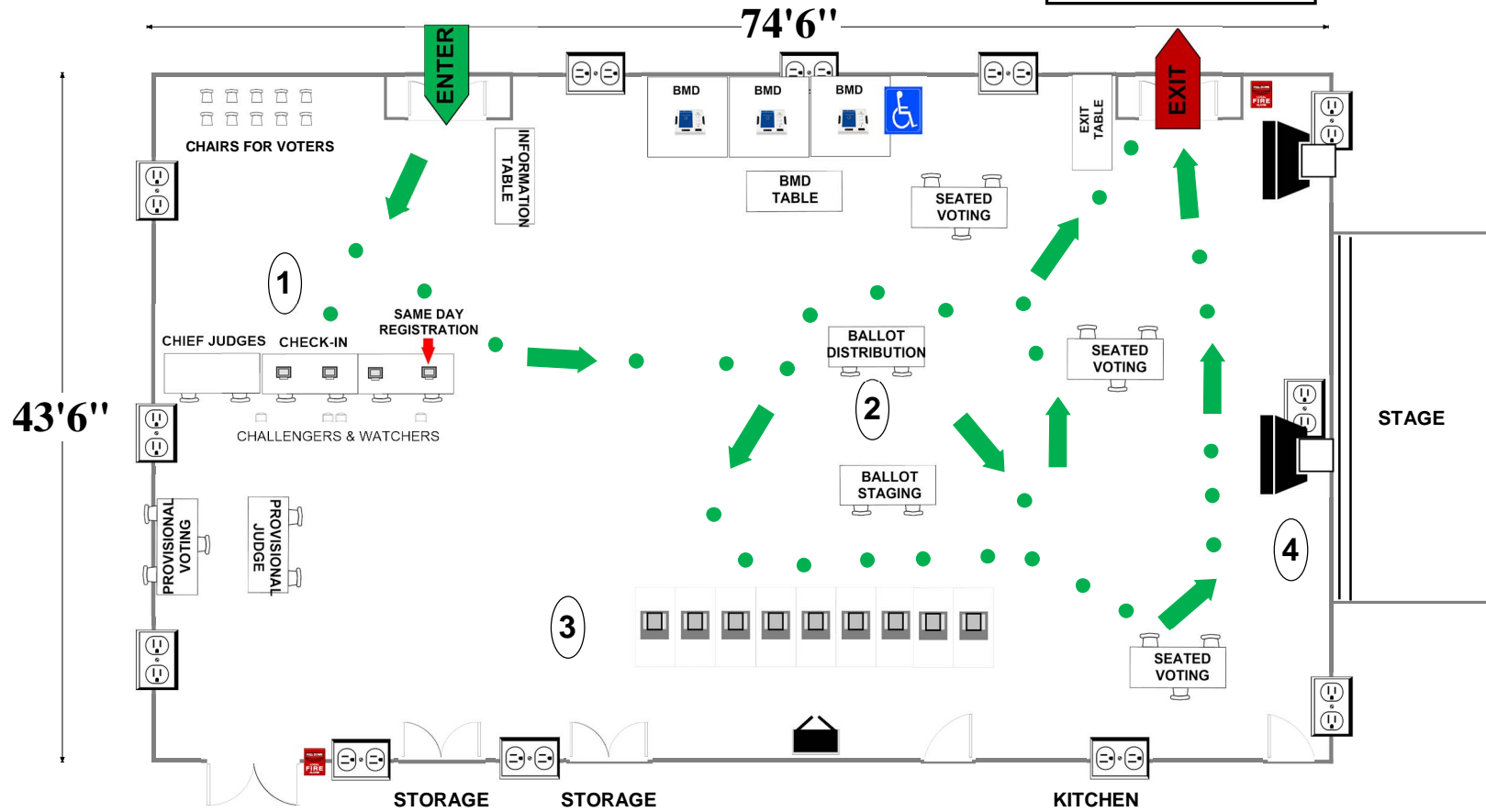
10-12 Bells Mill Elementary School

8225 Bells Mill Rd
Potomac, MD 20854

RECOMMENDED ROOM PLAN

ALL-PURPOSE ROOM

- 9** Voting Booths
- 9** Seated Voting
- 4** Poll Books
- 3** BMDs
- 2** Scanners



- 6'X2 1/2' Table
- Voting Booths with 2 1/2'X5' clearance
- Transfer Cart
- Window
- Ballot Marking Device
- Vending Machine
- Electronic Poll Book
- Scanner
- Scanner Judge stands
2 - 3 feet from scanner
- 1 Voter Travel
- 2 plug outlet
- Fire alarm

Montgomery County
Board of Elections

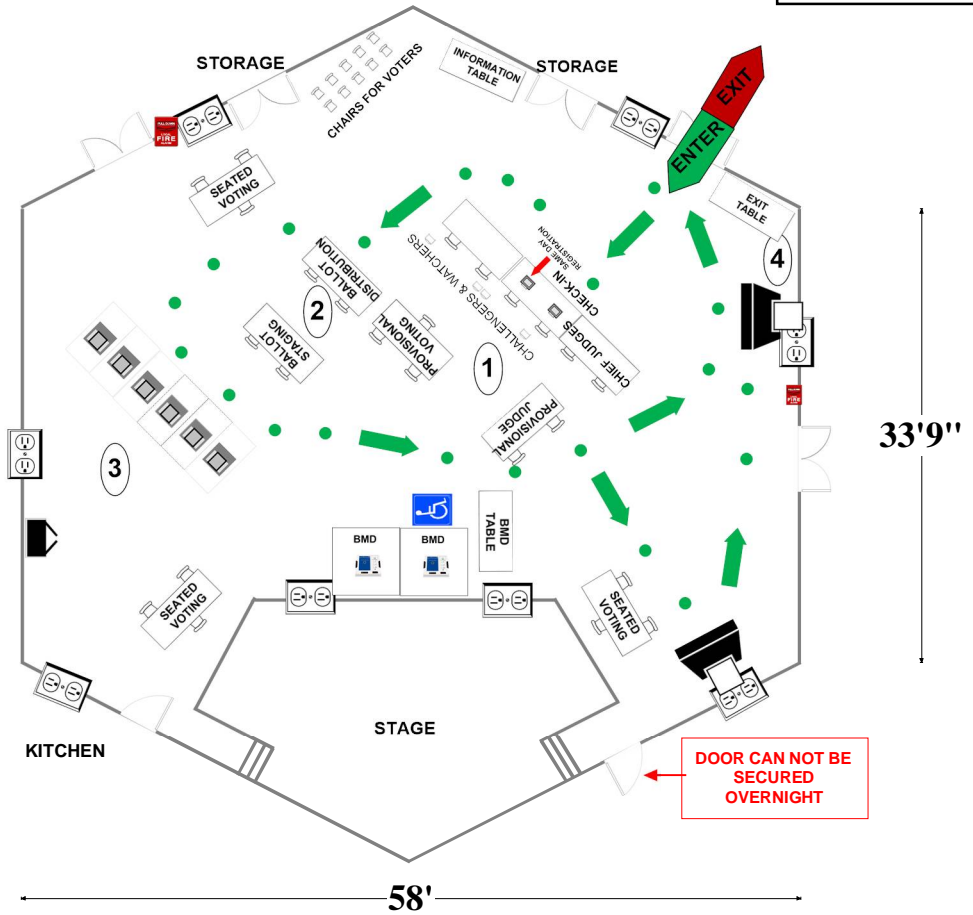
9/19/2024

10-13 Potomac Community Center
 11315 Falls Rd
 Potomac, MD 20854

SOCIAL HALL

RECOMMENDED ROOM LAYOUT

- 6** Voting Booths
- 9** Seated Voting
- 2** Poll Books
- 2** BMDs
- 2** Scanners



- 6'X2½' Table
- Voting Booths with 2½'X5' clearance
- Transfer Cart
- Window
- Ballot Marking Device
- Vending Machine
- Electronic Poll Book
- Scanner
- Scanner Judge stands**
2 - 3 feet from scanner
- 1 Voter Travel
- 2 plug outlet
- Fire alarm

Montgomery County
 Board of Elections

9/19/2024