

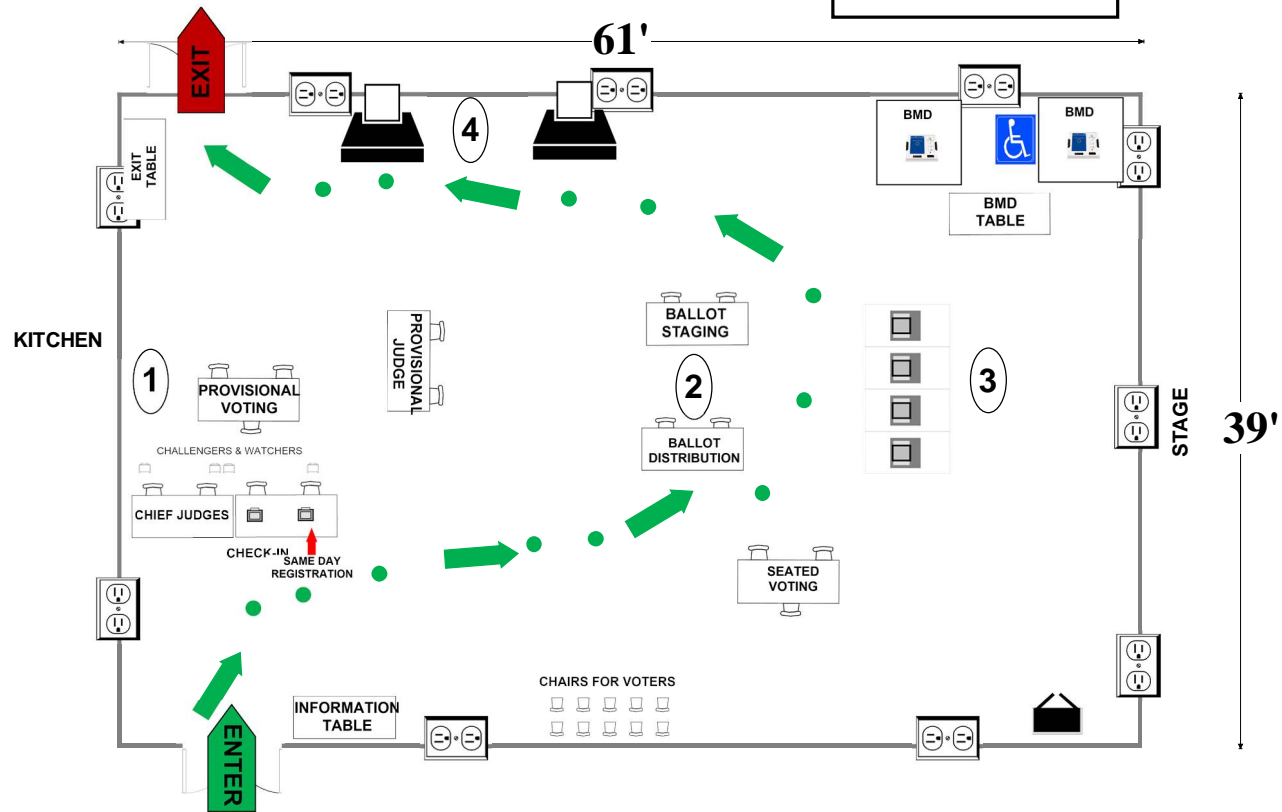
12-01 Damascus Elementary School

10201 Bethesda Church Rd
Damascus, MD 20872

ALL-PURPOSE ROOM

RECOMMENDED ROOM LAYOUT

- 4** Voting Booths
- 3** Seated Voting
- 2** Poll Books
- 2** BMDs
- 2** Scanners



- 6'X2½' Table
- Voting Booths with 2½'X5' clearance
- Transfer Cart
- Window
- Ballot Marking Device
- Vending Machine
- Electronic Poll Book
- Scanner
- Scanner Judge stands**
2 - 3 feet from scanner
- 1 Voter Travel
- 2 plug outlet
- Fire alarm

Montgomery County
Board of Elections
9/19/2024

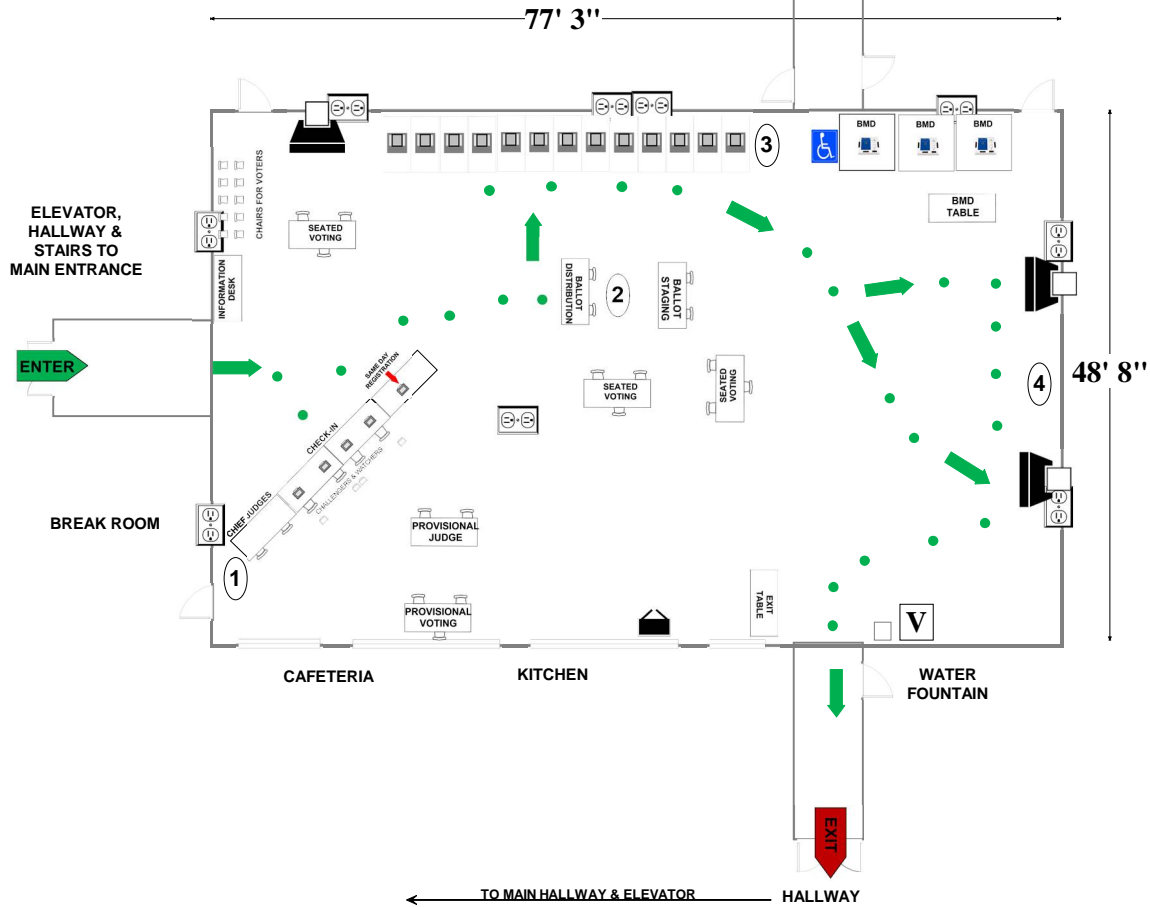
12-02 / 02-07 John T. Baker Middle School

25400 Oak Drive
Damascus, MD 20872

RECOMMENDED ROOM LAYOUT

CAFETERIA

- 13 Voting Booths
- 9 Seated Voting
- 5 Poll Books
- 3 BMDs
- 3 Scanners



- | | | | | | |
|--|--|--|---|--|---------------|
| | 6'x2 1/2' Table | | Ballot Marking Device | | Voter Travel |
| | Voting Booths with 2 1/2'x5' clearance | | Vending Machine | | 2 plug outlet |
| | Transfer Cart | | Electronic Poll Book | | Scanner |
| | Window | | Scanner Judge stands
2 - 3 feet from scanner | | Fire alarm |

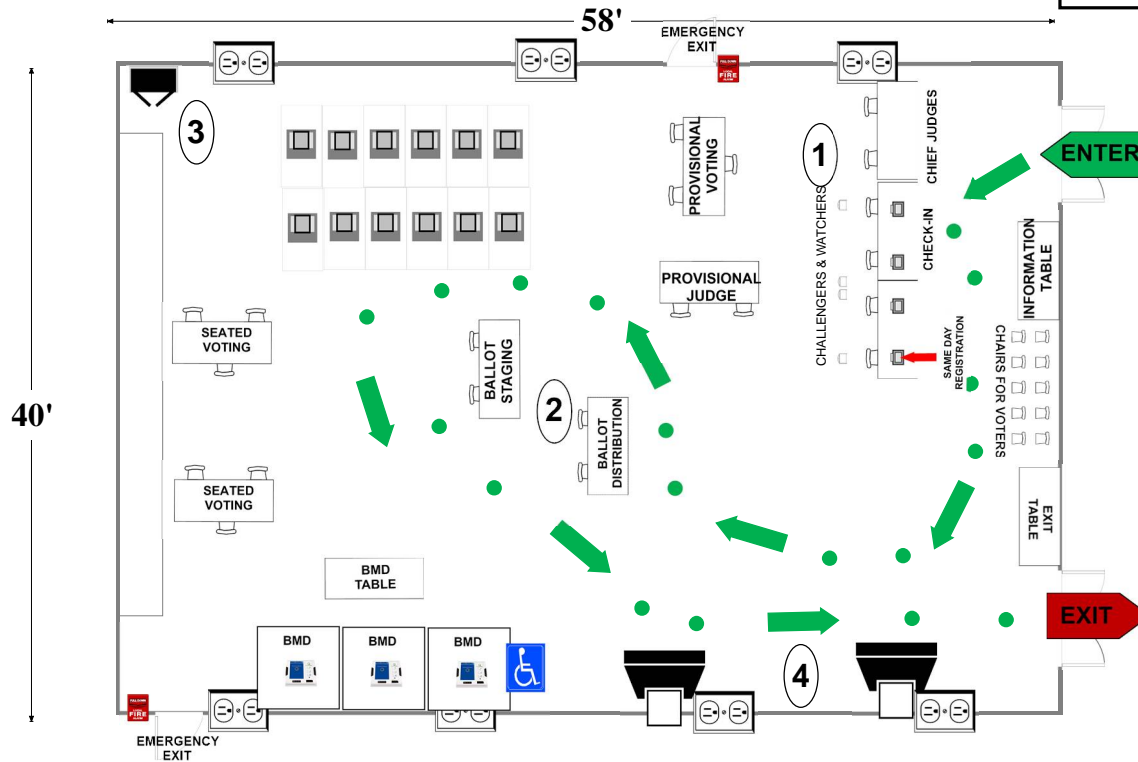
Montgomery County
Board of Elections

9/19/2024

12-03 Woodfield Elementary School
 24200 Woodfield Rd
 Gaithersburg, MD 20882
RECOMMENDED ROOM LAYOUT

ALL-PURPOSE ROOM

- | | |
|-----------|---------------|
| 12 | Voting Booths |
| 6 | Seated Voting |
| 4 | Poll Books |
| 3 | BMDs |
| 2 | Scanners |



- | | | | | | |
|--|--|--|-----------------------|----------|---------------|
| | 6'X2 1/2' Table | | Ballot Marking Device | 1 | Voter Travel |
| | Voting Booths with 2 1/2'X5' clearance | | Vending Machine | | 2 plug outlet |
| | Transfer Cart | | Electronic Poll Book | | Fire alarm |
| | Window | | Scanner | | |
- Scanner Judge stands
2 - 3 feet from scanner**

Montgomery County
 Board of Elections
 10/11/2024

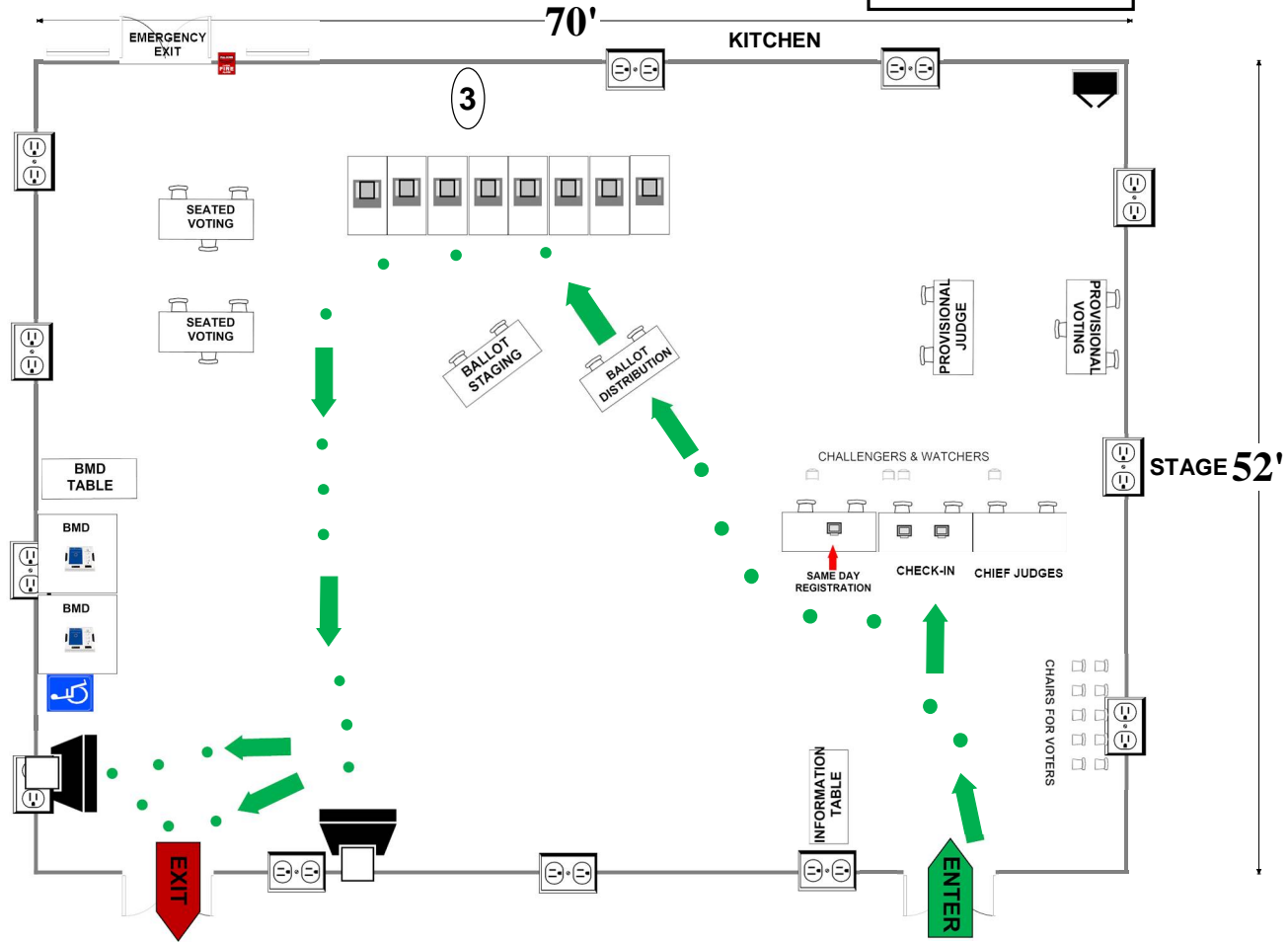
12-04 Lois P. Rockwell Elementary School

24555 Cutsail Dr
Damascus, MD 20872

ALL-PURPOSE ROOM

RECOMMENDED ROOM LAYOUT

- 8** Voting Booths
- 6** Seated Voting
- 3** Poll Books
- 2** BMDs
- 2** Scanners



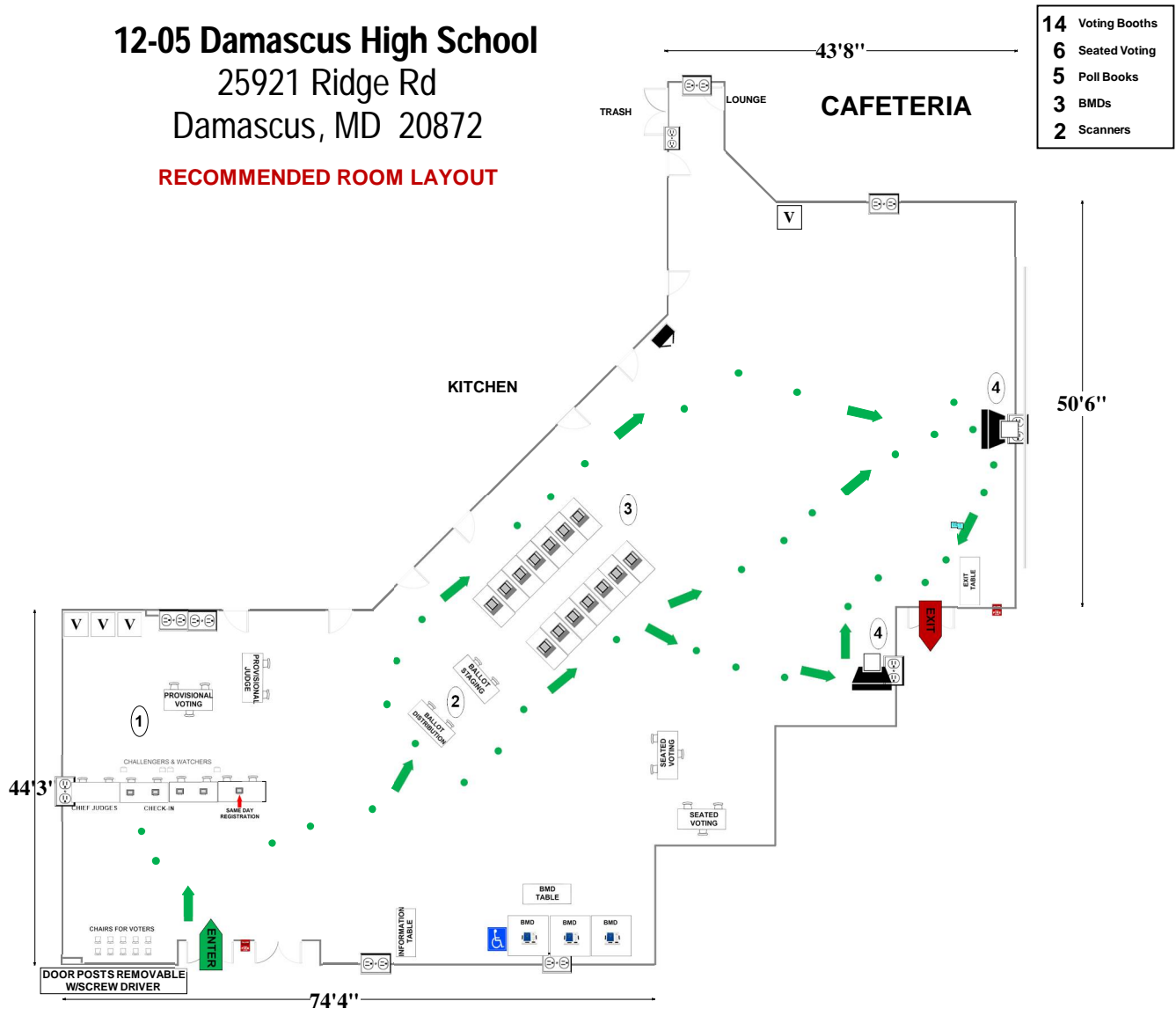
- 6'X2½' Table
- Ballot Marking Device
- Voting Booths with 2½'X5' clearance
- Vending Machine
- Scanner
- Electronic Poll Book
- Black Transfer Cart
- Voter Travel
- 2 plug outlet
- Fire alarm
- Window

Montgomery County
Board of Elections
9/19/2024

12-05 Damascus High School

25921 Ridge Rd
Damascus, MD 20872

RECOMMENDED ROOM LAYOUT



- 6'x2 1/2' Table
- Voting Booths with 2 1/2'x5' clearance
- Transfer Cart
- Window
- Ballot Marking Device
- Vending Machine
- Electronic Poll Book
- Scanner
- Scanner Judge stands
2 - 3 feet from scanner
- 1 Voter Travel
- 2 plug outlet
- Fire alarm

Montgomery County
Board of Elections
9/19/2024