

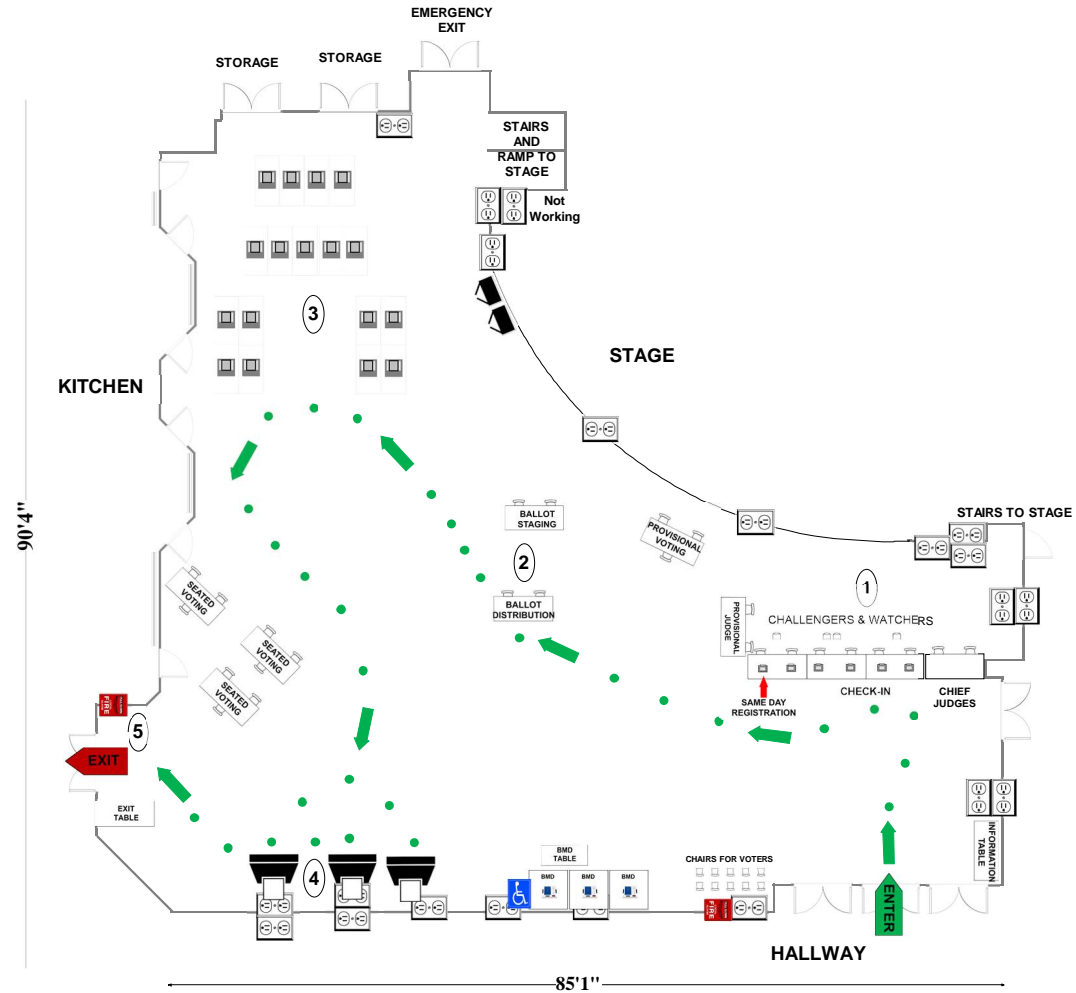
02-01 Rocky Hill Middle School

22401 Brick Haven Way
Clarksburg, MD 20871

RECOMMENDED ROOM LAYOUT

CAFETERIA

- 17 Voting Booths
- 9 Seated Voting
- 6 Poll Books
- 3 BMDs
- 3 Scanners



- 6'x2 1/2' Table
- Voting Booths with 2 1/2'x5' clearance
- Transfer Cart
- Window
- Bookcase
- Ballot Marking Device
- Vending Machine
- Electronic Poll Book
- Scanner
- Scanner Judge stands
2 - 3 feet from scanner
- 1 Voter Travel
- 2 plug outlet
- Fire alarm
- Column

Montgomery County
Board of Elections
8/16/2024

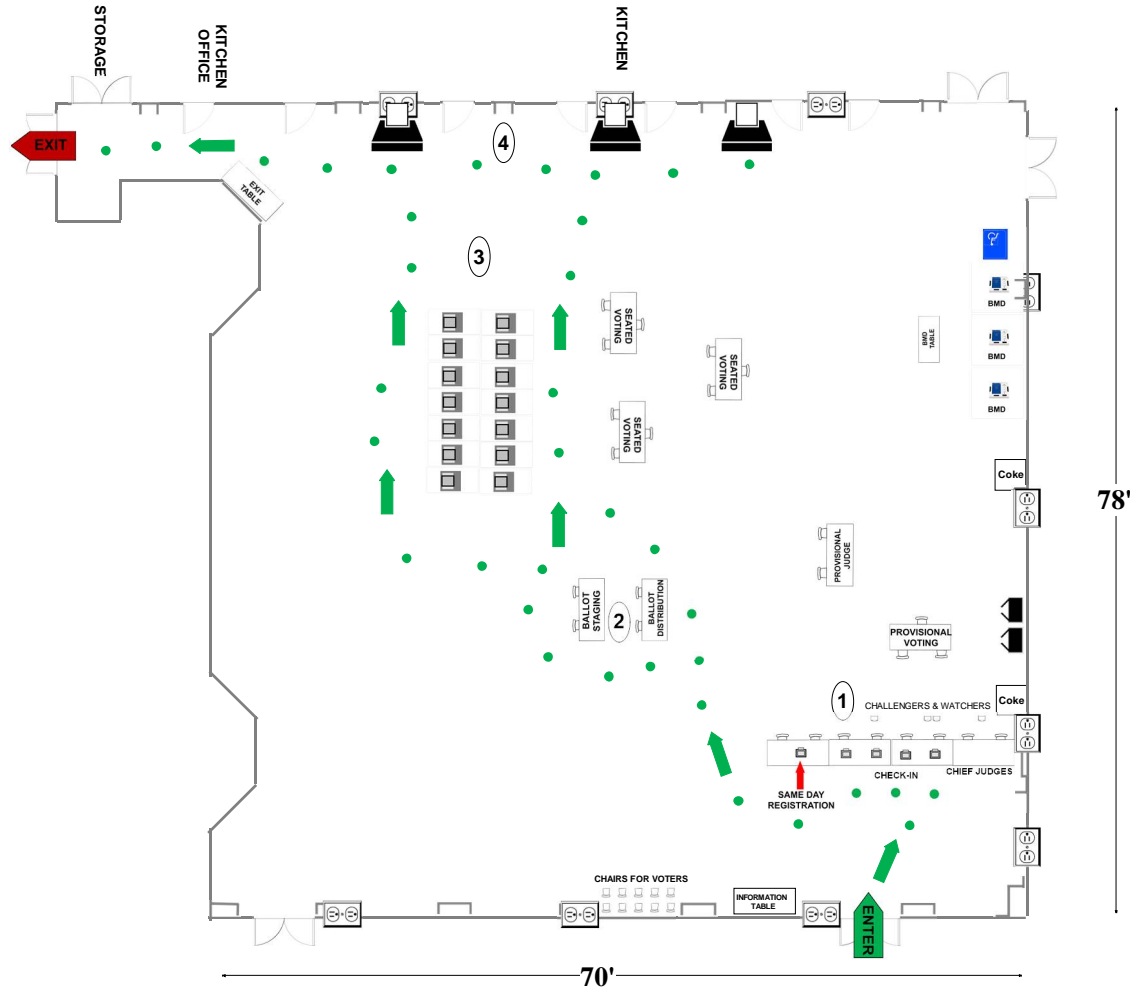
02-02 Kingsview Middle School

18909 Kingsview Rd
Germantown, MD 20874

CAFETERIA

RECOMMENDED ROOM LAYOUT

- 14 Voting Booths
- 9 Seated Voting
- 5 Poll Books
- 3 BMDs
- 3 Scanners



- 6'x2 1/2' Table
- Voting Booths with 2 1/2'x5' clearance
- Transfer Cart
- Window
- Ballot Marking Device
- Vending Machine
- Scanner
- Electronic Poll Book
- Scanner Judge stands
2 - 3 feet from scanner
- 1 Voter Travel
- 2 plug outlet
- Fire alarm

Montgomery County
Board of Elections
8/16/2024

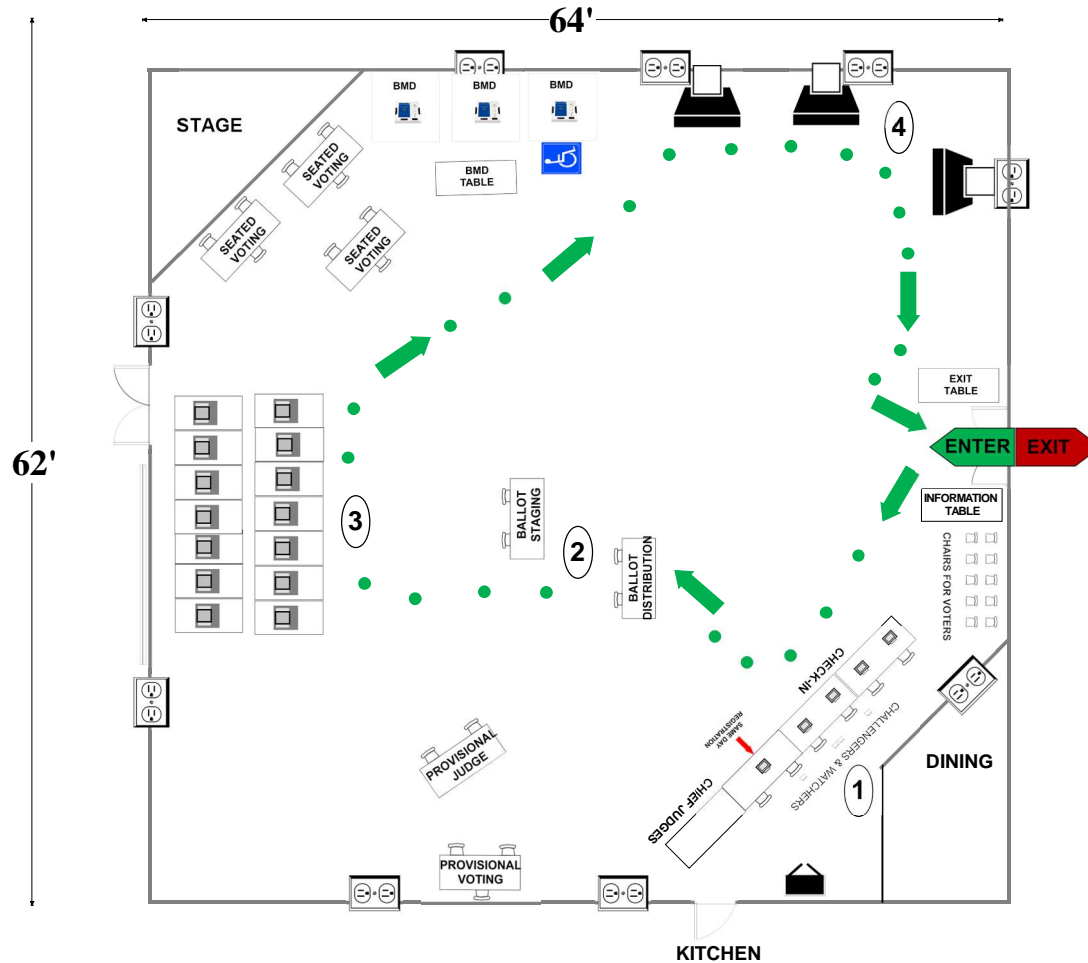
02-03 Waters Landing Elementary School

13100 Waters Landing Dr
Germantown, MD 20874

RECOMMENDED ROOM LAYOUT

ALL PURPOSE ROOM

- | | |
|-----------|---------------|
| 14 | Voting Booths |
| 9 | Seated Voting |
| 5 | Poll Books |
| 3 | BMDs |
| 3 | Scanners |



- | | | | | | |
|--|--|--|-------------------------|--|----------------|
| | 6'X2 1/2' Table | | Ballot Marking Device | | 1 Voter Travel |
| | Voting Booths with 2 1/2'X5' clearance | | Vending Machine | | 2 plug outlet |
| | Transfer Cart | | Electronic Poll Book | | Fire alarm |
| | Window | | Scanner | | |
| | | | Scanner Judge stands | | |
| | | | 2 - 3 feet from scanner | | |

Montgomery County
Board of Elections
9/23/2024

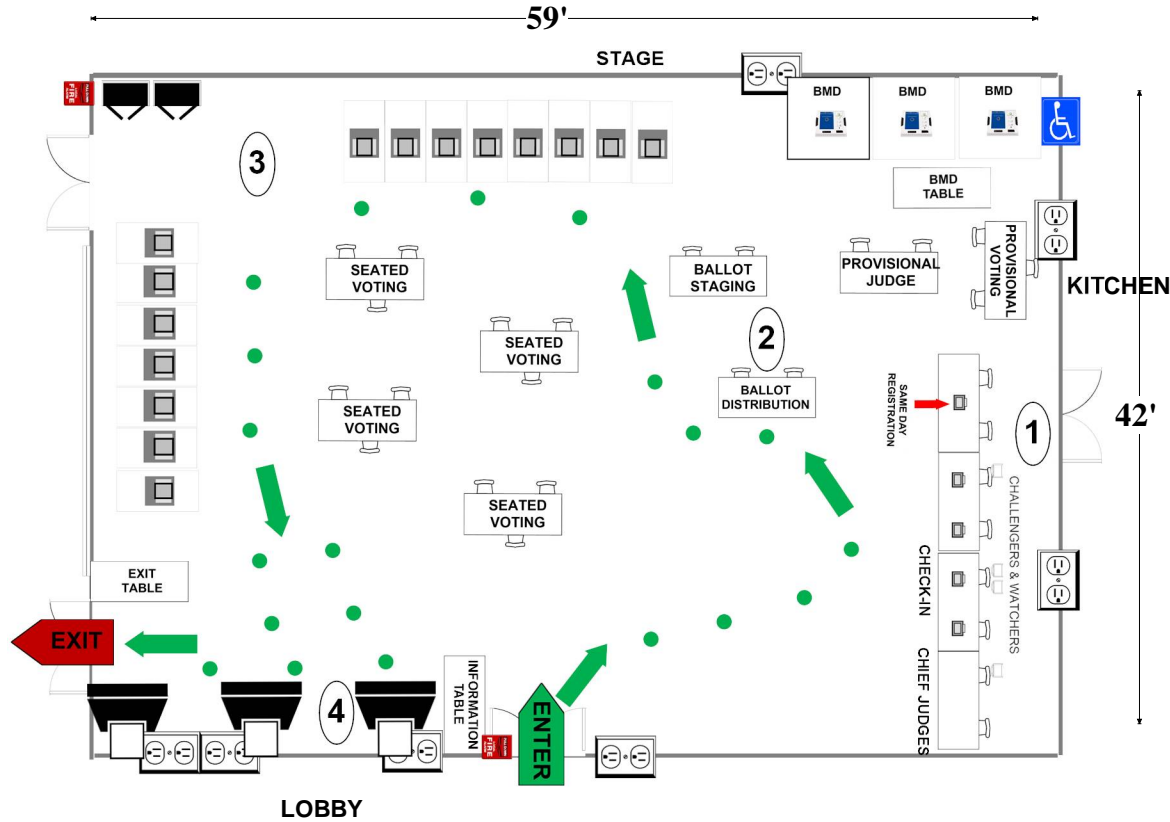
02-04 Lake Seneca Elementary School

13600 Wanegarden Dr
Germantown, MD 20874

ALL-PURPOSE ROOM

- | | |
|----|---------------|
| 15 | Voting Booths |
| 12 | Seated Voting |
| 5 | Poll Books |
| 3 | BMDs |
| 3 | Scanners |

RECOMMENDED ROOM LAYOUT



- | | | | | | |
|--|--|--|-----------------------|--|---------------|
| | 6'X2 1/2' Table | | Ballot Marking Device | | Voter Travel |
| | Voting Booths with 2 1/2'X5' clearance | | Vending Machine | | 2 plug outlet |
| | Transfer Cart | | Electronic Poll Book | | Fire alarm |
| | Window | | Scanner | | |
| | | Scanner Judge stands
2 - 3 feet from scanner | | | |

Montgomery County
Board of Elections

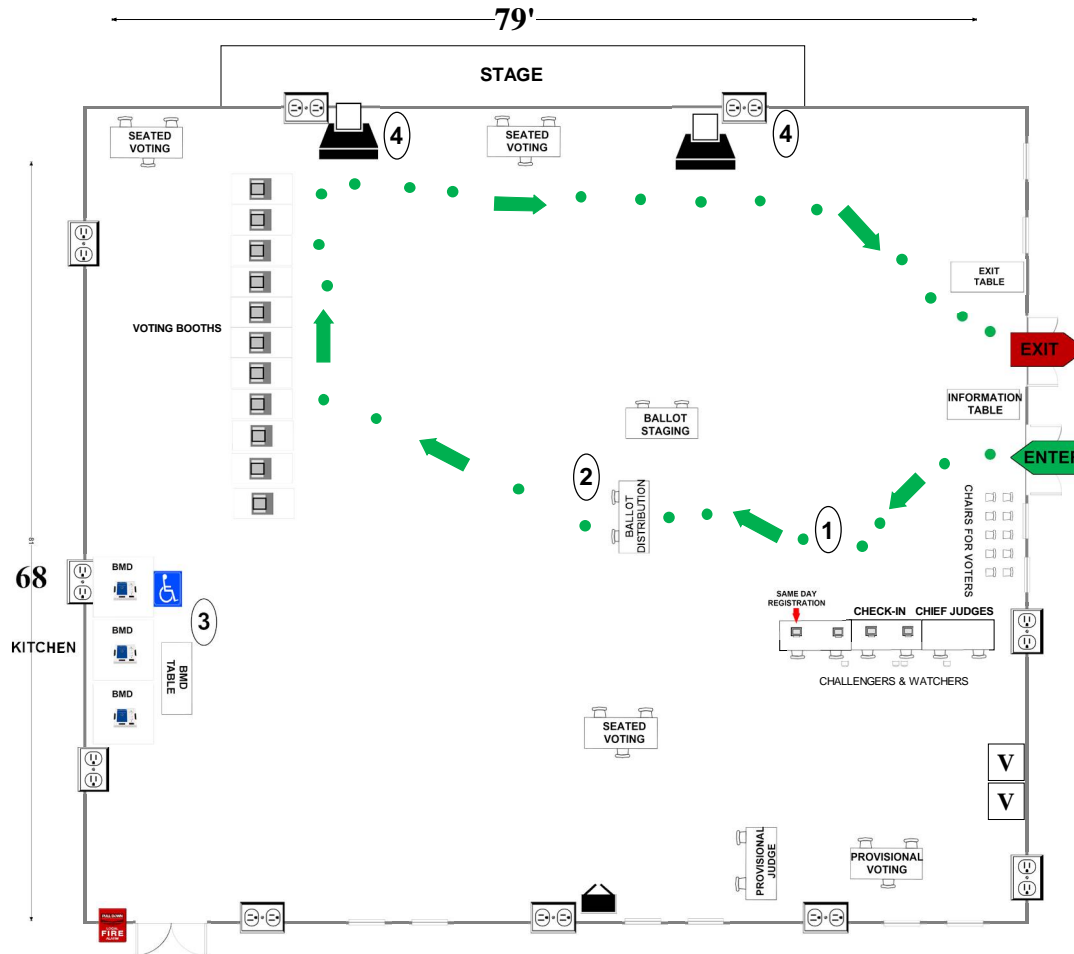
8/16/2024

02-05 Dr. Martin Luther King Jr. Middle School
 13737 Wisteria Dr.
 Germantown, MD 20874

CAFETERIA

RECOMMENDED ROOM LAYOUT

- | | |
|-----------|---------------|
| 11 | Voting Booths |
| 9 | Seated Voting |
| 4 | Poll Books |
| 3 | BMDs |
| 2 | Scanners |



- | | | |
|--|-----------------------|--|
| 6'X2 1/2' Table | Ballot Marking Device | Voter Travel |
| Voting Booths with 2 1/2'X5' clearance | Vending Machine | 2 plug outlet |
| Transfer Cart | Electronic Poll Book | Fire alarm |
| Window | Scanner | Scanner Judge stands
2 - 3 feet from scanner |

Montgomery County
 Board of Elections

10/9/2024

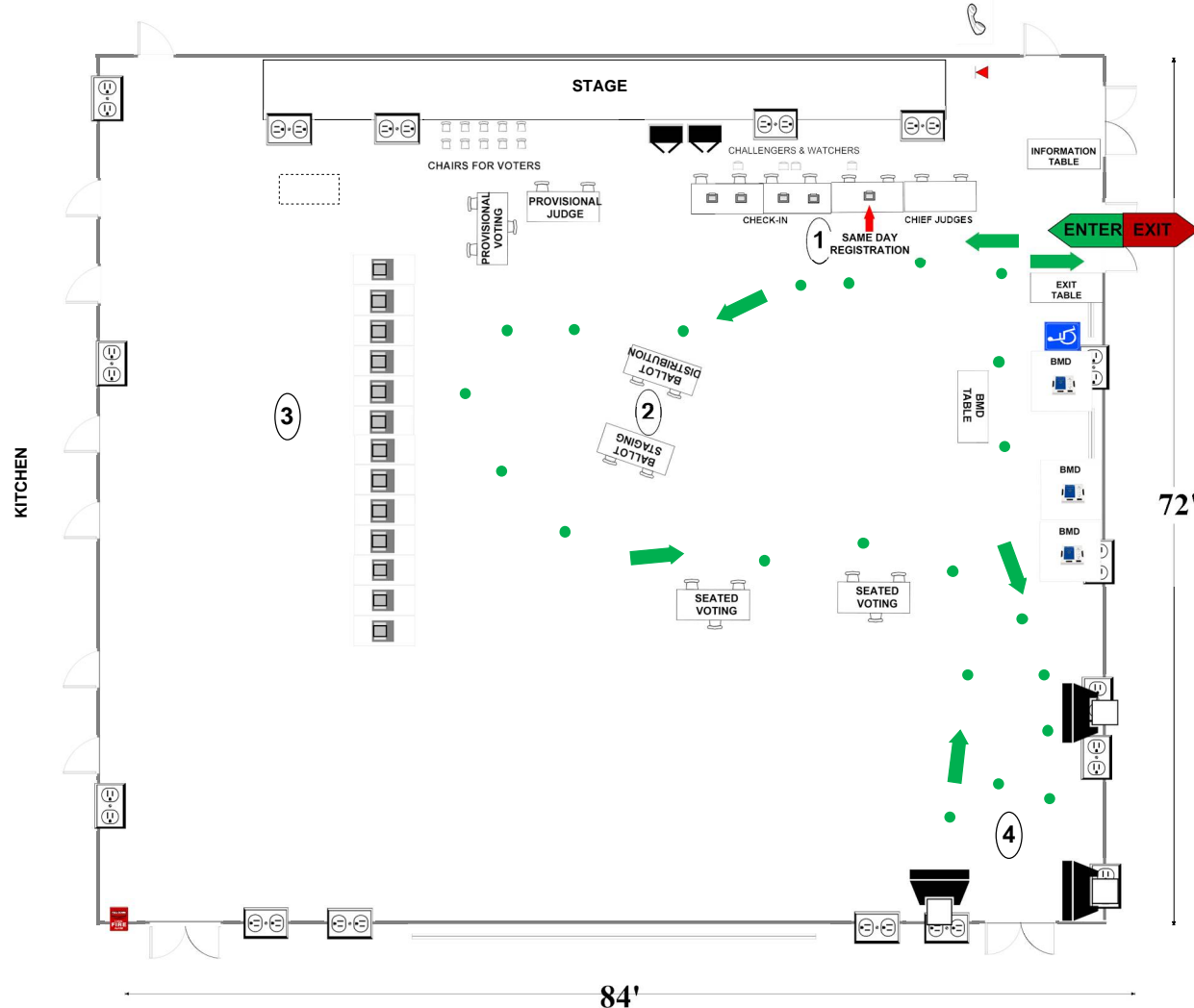
02-06 Hallie Wells Middle School

11701 Little Seneca Parkway
 Clarksburg, MD 20871

CAFETERIA

RECOMMENDED ROOM LAYOUT

- 13** Voting Booths
- 6** Seated Voting
- 5** Poll Books
- 3** BMDs
- 3** Scanners



- | | | | | | |
|--|--|--|---|--|---------------|
| | 6'X2 1/2' Table | | Ballot Marking Device | | Voter Travel |
| | Voting Booths with 2 1/2'X5' clearance | | Vending Machine | | 2 plug outlet |
| | Transfer Cart | | Electronic Poll Book | | Scanner |
| | Window | | Scanner Judge stands
2 - 3 feet from scanner | | Fire alarm |

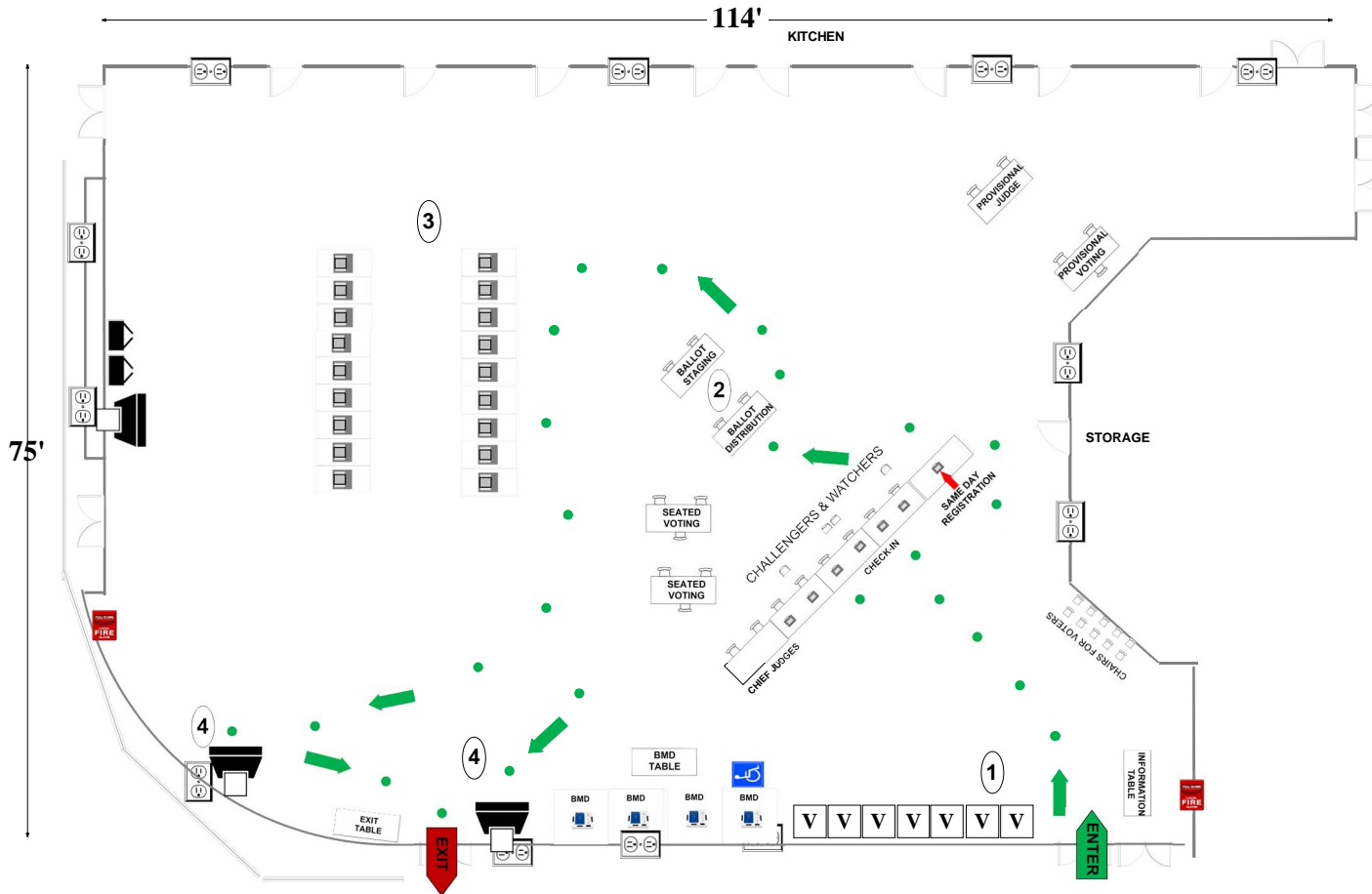
Montgomery County
 Board of Elections
 8/16/2024

02-08 Clarksburg High School
 22500 Wims Rd
 Clarksburg, MD 20871

CAFETERIA

- 18** Voting Booths
- 6** Seated Voting
- 7** Poll Books
- 4** BMDs
- 3** Scanners

RECOMMENDED ROOM LAYOUT



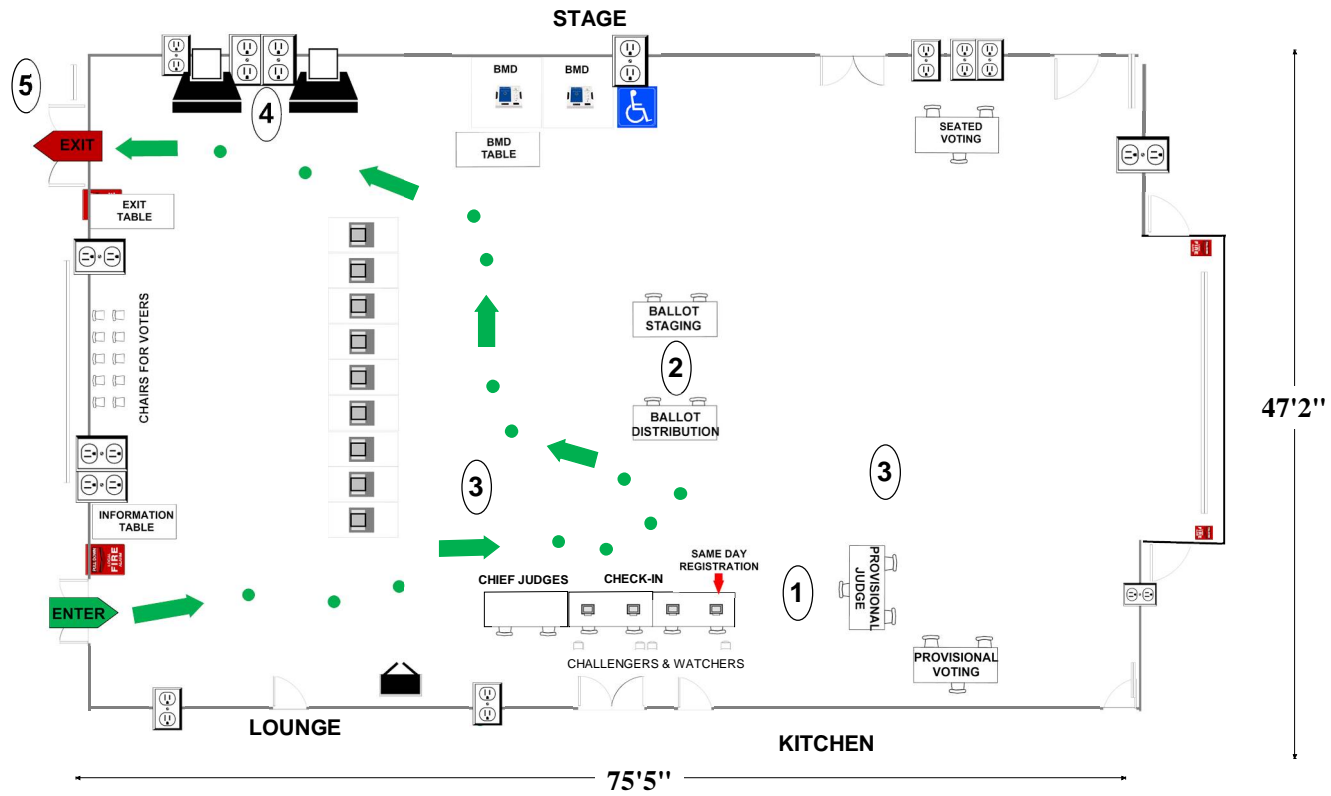
- | | | | | | |
|--|--|--|---|--|---------------|
| | 6'X2 1/2' Table | | Ballot Marking Device | | Voter Travel |
| | Voting Booths with 2 1/2'X5' clearance | | Vending Machine | | 2 plug outlet |
| | Transfer Cart | | Electronic Poll Book | | Fire alarm |
| | Window | | Scanner | | Column |
| | Bookcase | | Scanner Judge stands
2 - 3 feet from scanner | | |

02-10 Little Bennett Elementary School
 23930 Burdette Forest Rd
 Clarksburg, MD 20871

ALL-PURPOSE ROOM

- | | |
|----------|---------------|
| 9 | Voting Booths |
| 3 | Seated Voting |
| 4 | Poll Books |
| 2 | BMDs |
| 2 | Scanners |

RECOMMENDED ROOM LAYOUT



- | | | | | | |
|--|--|--|---|--|---------------|
| | 6'x2 1/2' Table | | Ballot Marking Device | | Voter Travel |
| | Voting Booths with 2 1/2' x 5' clearance | | Vending Machine | | 2 plug outlet |
| | Transfer Cart | | Electronic Poll Book | | Fire alarm |
| | Window | | Scanner | | Column |
| | Bookcase | | Scanner Judge stands
2 - 3 feet from scanner | | |

Montgomery County
 Board of Elections

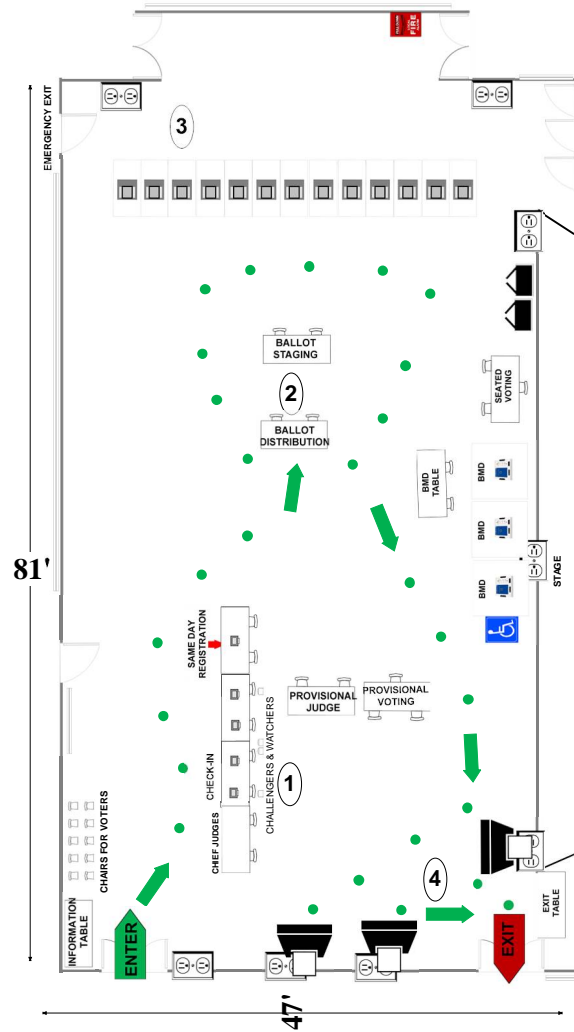
8/19/2024

02-11 Wilson Wims Elementary School
 12520 Blue Sky Drive
 Clarksburg, MD 20871

ALL-PURPOSE ROOM

RECOMMENDED ROOM LAYOUT

- | | |
|-----------|---------------|
| 13 | Voting Booths |
| 3 | Seated Voting |
| 5 | Poll Books |
| 3 | BMDs |
| 3 | Scanners |



- | | | | | | |
|--|--|--|---|----------|---------------|
| | 6'x2 1/2' Table | | Ballot Marking Device | 1 | Voter Travel |
| | Voting Booths with 2 1/2'x5' clearance | | Vending Machine | | 2 plug outlet |
| | Transfer Cart | | Electronic Poll Book | | Scanner |
| | Window | | Scanner Judge stands
2 - 3 feet from scanner | | Fire alarm |
| | Bookcase | | Column | | |

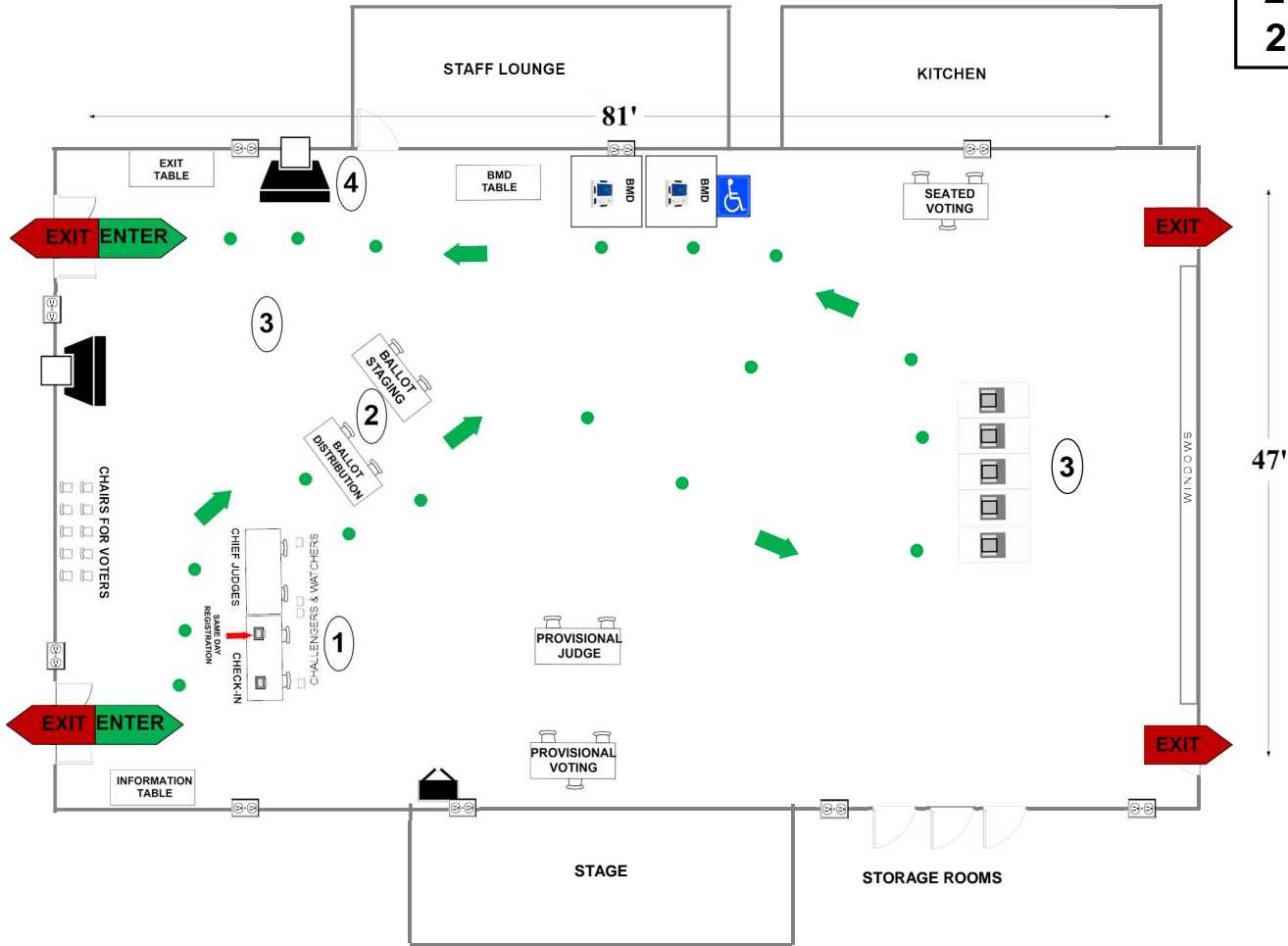
Montgomery County
 Board of Elections
 8/19/2024












02-12 Snowden Farm Elementary School
22500 Sweetspire Dr
Clarksburg, MD 20871

RECOMMENDED ROOM LAYOUT

ALL PURPOSE ROOM

- 5** Voting Booths
- 3** Seated Voting
- 2** Poll Books
- 2** BMDs
- 2** Scanners



-  6'X2 1/2' Table
-  Ballot Marking Device
-  1 Voter Travel
-  Voting Booths with 2 1/2'X5' clearance
-  Vending Machine
-  2 plug outlet
-  Transfer Cart
-  Electronic Poll Book
-  Scanner
-  Fire alarm
-  Window
- Scanner Judge stands**
2 - 3 feet from scanner

Montgomery County
 Board of Elections
 8/19/2024